

MITSUBISHI SEWING MACHINE
PARTS CATALOG
Model . . . DB-150

INDEX

1. Arm Bed and its Accessories	1
2. Needle bar & Take-up lever Mechanism	4
3. Upper shaft & Vertical shaft Mechanism	6
4. Stitch regulator Mechanism	7
5. Presser foot Mechanism	8
6. Feed rock shaft Mechanism	9
7. Rotating hook shaft & Feed lifting rock shaft Mechanism	10
8. Oil lubrication Mechanism	12

ARM BED AND ITS ACCESSORIES

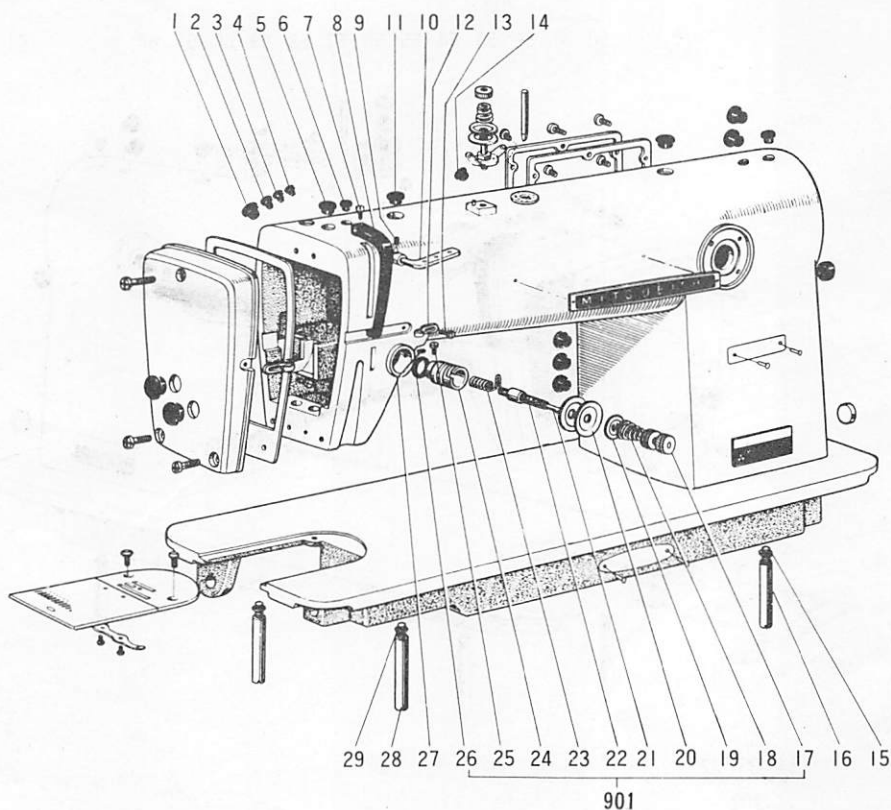


Fig. No.	Part No.	Name of Part	Amt. req	Remarks
1	W 5 0 1 3 7 4	Rubber plug	1	
2	W 5 0 1 3 2 0	Rubber plug	1	
3	W 5 0 1 3 2 0	Rubber plug	1	
4	W 5 0 1 3 2 0	Rubber plug	1	
5	W 5 0 1 3 2 0	Rubber plug	1	
6	W 5 0 2 0 7 8	Oiling rubber plug (red)	1	
7	W 5 0 0 0 9 2	Screw (for Fig. 8)	1	
8	W 4 6 8 2 9 1	Thread take-up cover	1	
9	B 5 0 3 8 4 6	Set screw (for Fig. 10)	1	
10	B 4 0 9 0 3 4	Three-hole thread guide	1	
11	W 5 0 2 9 4 4	Oiling rubber plug (red)	1	
12	W 4 5 2 1 5 1	Arm thread guide	1	
13	W 5 0 1 9 0 1	Screw (for Fig. 12)	1	
14	W 5 0 1 3 2 0	Rubber plug	1	
15	W 4 6 2 6 5 4	Washer (for Fig. 16)	1	
16	W 4 5 2 3 4 3	Short leg (for Fig. 37)	1	
9 0 1	W 4 5 0 0 6 7	Thread tension regulator complete	1	
17	W 5 0 1 0 2 7	Thread tension regulating thumb nut	2	
18	W 4 5 0 0 7 1	Thread tension spring	1	
19	B 4 1 9 1 7 9	Thread tension releasing disc	1	
20	W 4 4 4 0 5 9	Thread tension disc	2	
21	B 5 0 9 2 1 6	Thread tension releasing pin	1	
22	B 4 1 9 1 7 8	Thread tension stud	1	
23	W 4 5 0 0 7 0	Thread take-up spring	1	
24	W 4 5 3 1 4 0	Thread tension regulator bushing	1	
25	W 5 0 0 7 4 1	Set screw (for Fig. 22)	1	
26	W 5 0 2 0 8 7	Rubber ring (for Fig. 24)	1	
27	B 5 0 9 0 8 8	Set screw (for Fig. 901)	1	
28	W 4 6 1 7 6 8	Long leg (for Fig. 37)	1	
29	W 4 6 2 6 5 4	Washer (for Fig. 28)	1	

ARM BED AND ITS ACCESSORIES

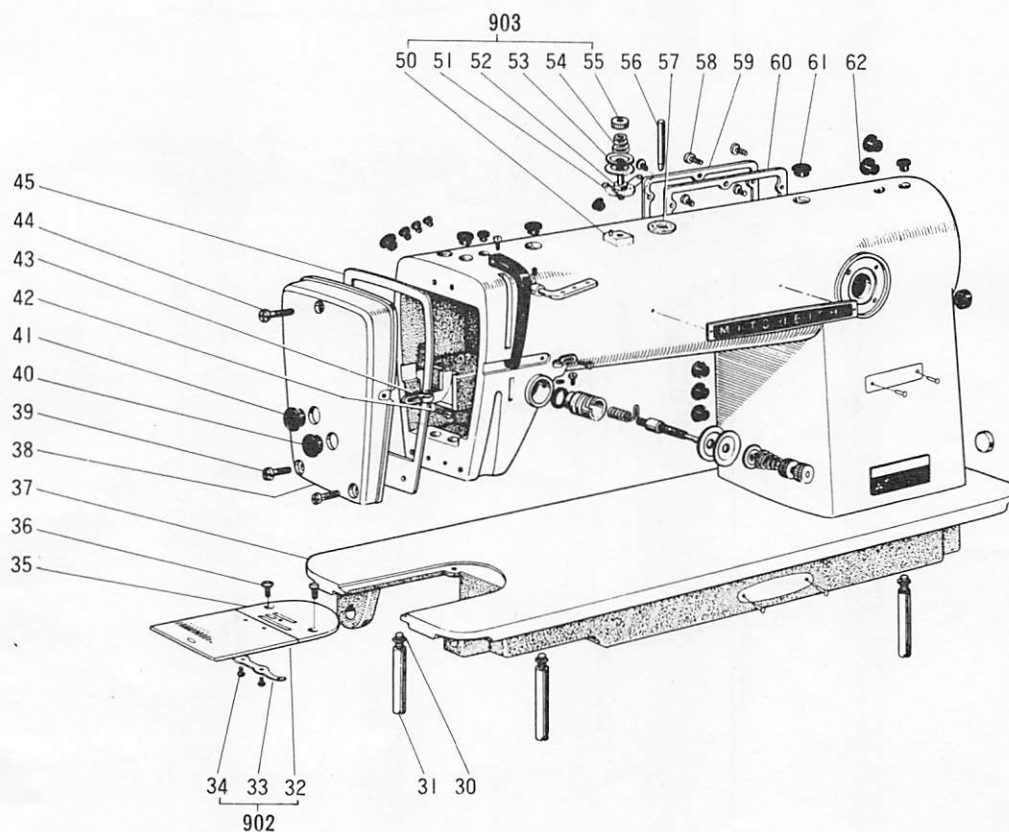


Fig. No.	Part No.	Name of Part	Amt. req	Remarks
3 0	W 4 6 2 6 5 4	Washer (for Fig. 31)	1	
3 1	W 4 5 2 3 4 3	Short leg (for Fig. 37)	1	
9 0 2	W 4 6 1 7 5 7	Slide plate complete	1	
3 2	B 4 1 9 2 0 8	Slide plate	1	
3 3	B 4 1 9 2 0 7	Spring (for Fig. 32)	1	
3 4	B 5 0 9 0 7 0	Screw (for Fig. 33)	2	
3 5	W 3 1 9 3 3 0	Needle plate	1	
3 6	W 5 0 0 1 9 7	Screw (for Fig. 35)	2	
3 7	W 1 1 0 8 0 4	Arm bed complete	1	
3 8	W 3 2 1 2 9 6	Face plate	1	
3 9	W 4 6 7 8 8 0	Screw (for Fig. 38)	2	
4 0	W 5 0 2 0 6 9	Rubber plug (for Fig. 38)	1	
4 1	W 5 0 2 0 6 9	Rubber plug (for Fig. 38)	1	
4 2	W 5 0 1 9 0 1	Screw (for Fig. 43)	1	
4 3	W 4 5 2 1 5 1	Face plate thread guide	1	
4 4	W 4 6 7 8 8 0	Screw (for Fig. 38)	1	
4 5	W 4 5 0 0 4 6	Gasket (for Fig. 38)	1	
9 0 3	W 4 5 0 6 1 9	Pre-tension complete	1	
5 0	W 5 0 0 8 1 0	Stopper pin (for Fig. 51)	1	
5 1	W 5 0 2 1 7 2	Thread guide (for pre-tension)	1	
5 2	W 5 0 2 1 7 1	Tension stud (for pre-tension)	1	
5 3	W 5 0 1 6 3 6	Tension discs (for pre-tension)	2	
5 4	W 5 0 2 1 9 3	Tension spring (for pre-tension)	1	
5 5	W 5 0 1 6 3 7	Tension nut (for pre-tension)	1	
5 6	W 4 6 1 7 4 4	Spool pin	1	
5 7	B 4 2 2 8 3 6	Felt sheet (for Fig. 56)	1	
5 8	W 4 6 6 8 1 0	Screw (for Fig. 59)	5	
5 9	W 4 5 0 0 4 7	Arm side cover	1	
6 0	W 4 5 0 0 4 8	Gasket (for Fig. 59)	1	
6 1	W 5 0 1 3 7 4	Rubber plug	1	
6 2	W 5 0 1 3 2 0	Rubber plug	1	

ARM BED AND ITS ACCESSORIES

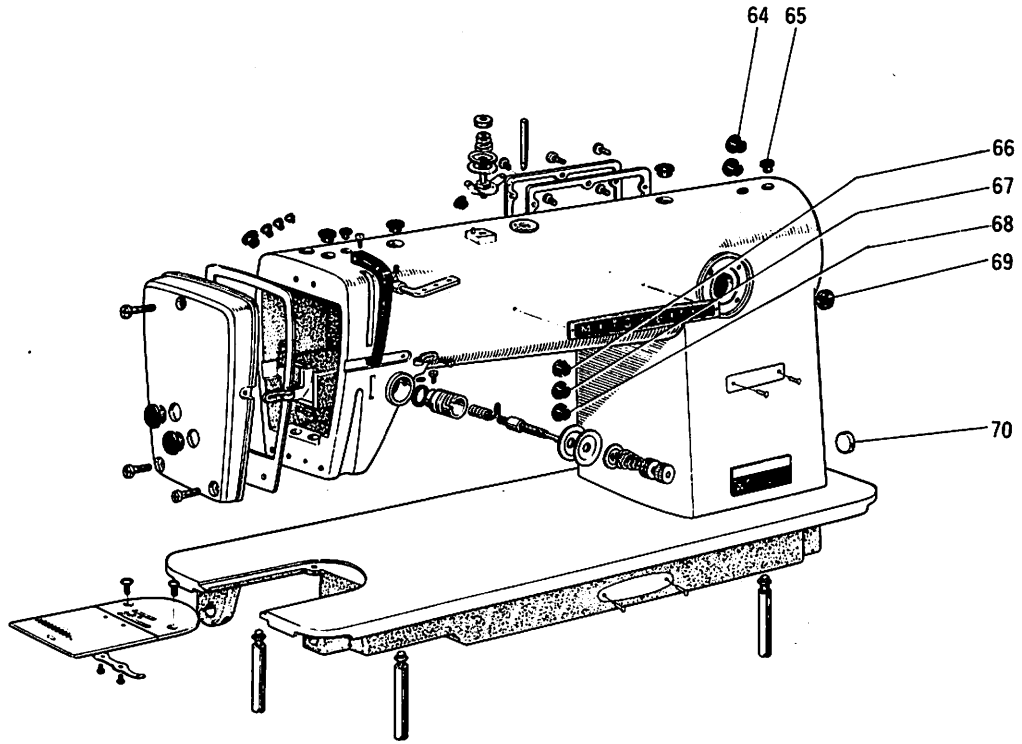


Fig. No.	Part No.	Name of Part	Amt. req	Remarks
64	W501320	Rubber plug	1	
65	W502078	Oiling rubber plug (red)	1	
66	W501320	Rubber plug	1	
67	W501320	Rubber plug	1	
68	W501320	Rubber plug	1	
69	W502091	Rubber plug	1	
70	W500162	Iron plug	1	

NEEDLE BAR & TAKE-UP LEVER MECHANISM

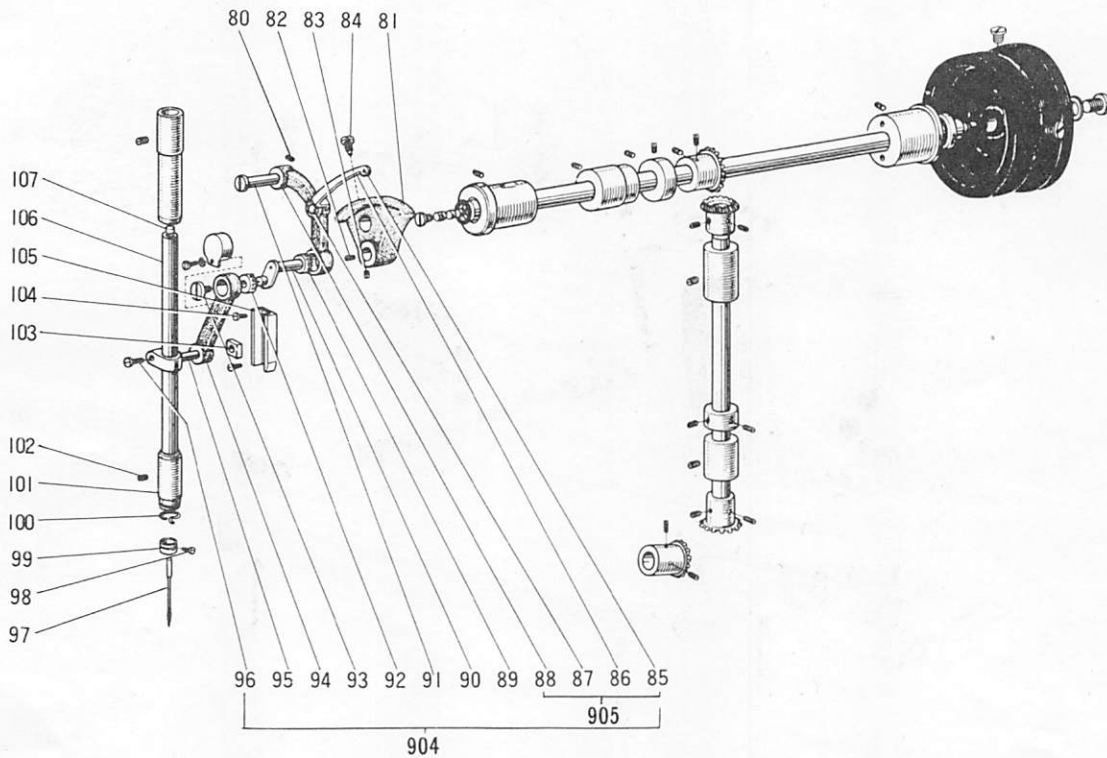


Fig. No.	Part No.	Name of Part	Amt. req	Remarks
80	W 5 0 0 0 0 6	Set screw (for Fig. 91)	1	
81	W 4 5 0 0 7 5	Crank	1	
82	B 5 0 4 0 1 6	Set screw (for Fig. 81)	1	
83	B 5 0 4 0 1 6	Set screw (for Fig. 81)	1	
84	B 5 0 3 8 5 1	Set screw (for Fig. 81)	1	
904	W 3 2 4 5 8 6	Thread take-up lever & needle bar connecting stud complete	1	
905	W 4 5 0 0 5 7	Thread take-up lever complete	1	
85	W 5 0 2 0 7 7	Thread take-up lever eyelet	1	
86	W 4 5 0 0 5 8	Thread take-up lever	1	
87	B 5 0 9 0 4 5	Set pin (for Fig. 86)	1	
88	W 4 5 0 0 6 1	Thread take-up connecting rod	1	
89	W 4 5 0 0 6 0	Needle roller bearing (for Fig. 90)	1	
90	W 4 5 0 0 5 9	Thread take-up crank	1	
91	W 4 5 0 0 6 2	Set pin (for Fig. 88)	1	
92	W 4 5 0 0 6 0	Needle roller bearing (for Fig. 90)	1	
93	W 5 0 2 0 7 6	Left thread screw (for Fig. 94)	1	
94	W 4 5 0 0 5 6	Needle bar connecting crank rod	1	
95	W 4 5 0 0 5 4	Needle bar connecting stud	1	
96	W 5 0 1 9 0 1	Screw (for Fig. 95)	1	
97	W 4 6 5 2 7 1	Needle	1	
98	W 5 0 2 0 7 4	Needle clamp screw	1	
99	W 5 0 2 0 7 5	Needle bar thread guide	1	
100	W 5 0 2 0 7 3	Needle bar bushing thread guide	1	
101	W 4 6 1 7 6 7	Needle bar bushing (under)	1	
102	W 5 0 0 4 8 9	Set screw (for Fig. 101)	1	
103	W 4 4 3 9 3 4	Square block (for Fig. 95)	1	
104	W 5 0 0 2 9 4	Screw (for Fig. 105)	2	
105	W 4 4 4 0 5 6	Needle bar connecting link guide	1	
106	W 4 5 0 0 5 3	Needle bar	1	
107	W 5 0 2 0 7 1	Plastic plug (for Fig. 106)	1	

NEEDLE BAR & TAKE-UP LEVER MECHANISM

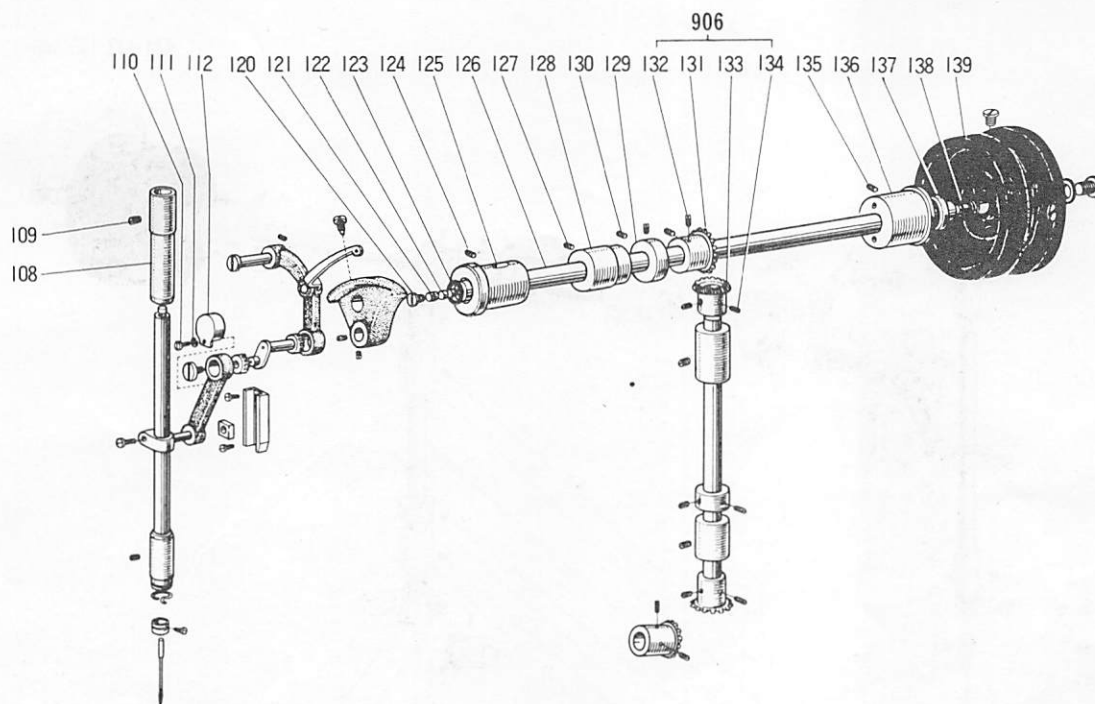


Fig. No.	Part No.	Name of Part	Amt. req	Remarks
1 0 8	W 4 6 1 7 6 1	Needle bar bushing (upper)	1	
1 0 9	B 5 0 8 9 7 1	Set screw (for Fig. 108)	1	
1 1 0	B 5 0 8 8 5 7	Screw (for Fig. 112)	1	
1 1 1	W 4 6 1 7 6 9	Washer (for Fig. 110)	1	
1 1 2	W 4 4 4 8 7 1	Cap (for Fig. 93)	1	
1 2 0	W 5 0 2 4 7 4	Screw (for arm shaft front)	1	
1 2 1	W 5 0 0 0 0 3	Paking (for arm shaft front)	3	
1 2 2	W 5 0 1 9 0 5	Alumi. plug (for arm shaft front)	1	
1 2 3	W 4 6 1 7 7 7	Oil seal (for arm shaft front)	1	
1 2 4	W 5 0 0 0 0 6	Set screw (for Fig. 125)	1	
1 2 5	W 4 6 1 7 7 8	Arm shaft bushing (left)	1	
1 2 6	W 3 2 1 2 9 1	Arm shaft	1	
1 2 7	W 5 0 0 0 0 6	Set screw (for Fig. 128)	1	
1 2 8	W 4 5 0 0 7 7	Arm shaft bushing (middle)	1	
1 2 9	W 4 5 0 0 7 9	Arm shaft collar	1	
1 3 0	B 5 0 9 0 8 8	Set screw (for Fig. 129)	2	
9 0 6	W 4 6 2 6 3 8	Arm shaft bevel gear complete	1	
1 3 1	W 4 4 4 1 0 6	Bevel gear (arm shaft)	1	
1 3 2	B 5 0 4 0 1 6	Set screw (for Fig. 131)	2	
1 3 3	W 4 4 4 1 0 7	Bevel gear (vertical shaft upper)	1	
1 3 4	B 5 0 4 0 1 6	Set screw (for Fig. 133)	2	
1 3 5	W 5 0 0 0 0 6	Set screw (for Fig. 136)	1	
1 3 6	W 4 6 1 7 8 3	Arm shaft bushing (right)	1	
1 3 7	W 4 4 1 7 8 4	Oil seal (for arm shaft back)	1	
1 3 8	W 4 6 1 7 5 8	O-ring (for arm shaft back)	1	
1 3 9	W 5 0 2 0 8 8	Screw (for arm shaft back)	1	

UPPER SHAFT & VERTICAL SHAFT MECHANISM

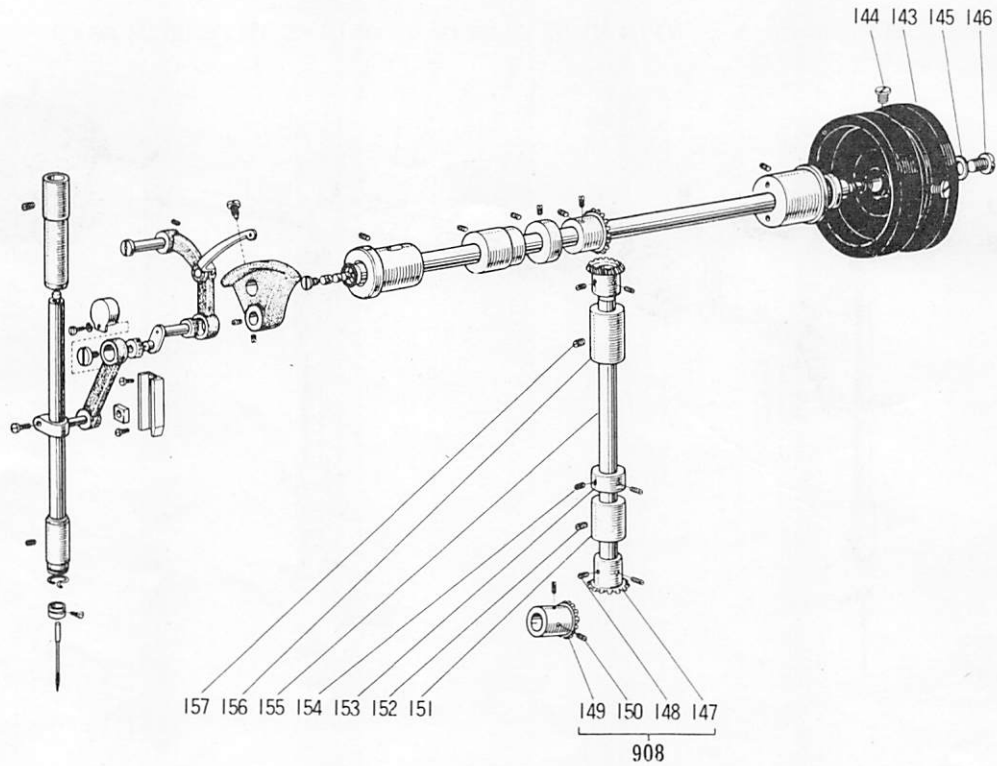


Fig. No.	Part No.	Name of Part	Amt. req	Remarks
143	W453501	Balance wheel	1	
144	W500509	Set screw (for Fig. 140)	2	
145	W500233	Rubber gasket (for Fig. 126)	1	
146	W461726	Screw (for Fig. 142)	1	
908	W462637	Hook shaft bevel gear complete	1	
147	W444109	Bevel gear (vertical shaft under)	1	
148	B504016	Set screw (for Fig. 144)	2	
149	W444111	Bevel gear (hook shaft)	1	
150	B504016	Set screw (for Fig. 146)	2	
151	W450082	Vertical shaft bushing (under)	1	
152	B509060	Set screw (for Fig. 148)	1	
153	B422844	Vertical shaft collar	1	
154	B508971	Set screw (for Fig. 150)	2	
155	W450080	Vertical shaft	1	
156	W450081	Vertical shaft bushing (upper)	1	
157	B509060	Set screw (for Fig. 153)	1	

STITCH REGULATOR MECHANISM

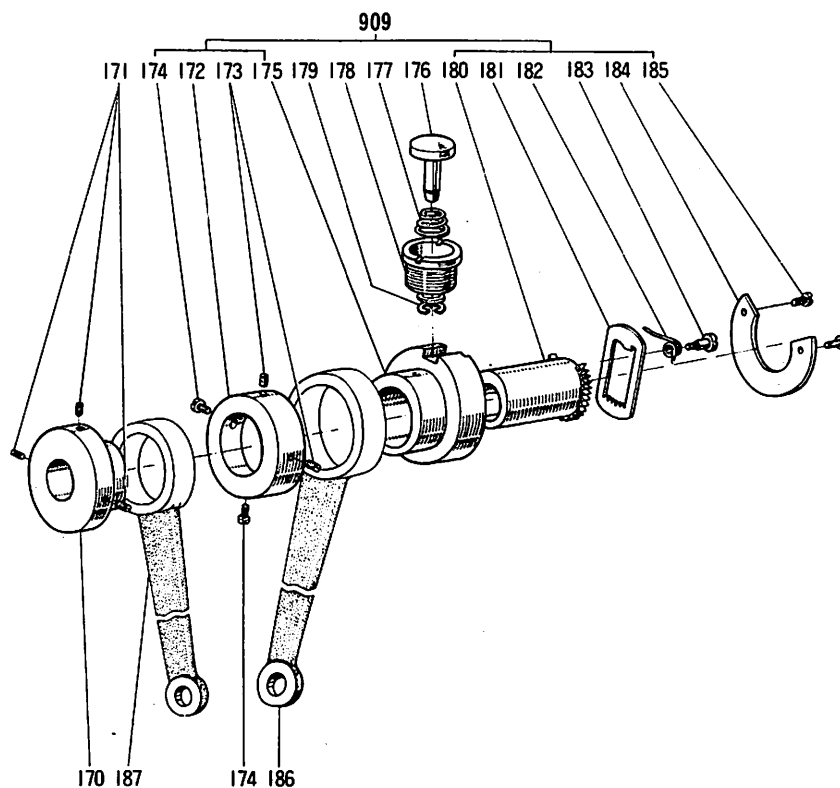


Fig. No.	Part No.	Name of Part	Amt. req	Remarks
170	W 4 5 2 3 4 1	Feed lifting cam	1	
171	B 5 0 3 8 5 2	Set screw (for Fig. 170)	3	
172	W 4 5 0 9 6 0	Collar (for Fig. 186)	1	
173	B 5 0 9 0 6 0	Set screw (for Fig. 172)	2	
174	W 5 0 0 5 0 9	Set screw (for Fig. 172)	2	
175	W 4 5 0 9 5 8	Feed rock shaft cam	1	
176	W 4 6 0 5 1 2	Push button (for feed regulator)	1	
177	W 4 6 2 6 5 7	Spring (for Fig. 176)	1	
178	W 4 6 2 6 5 6	Bushing (for Fig. 176)	1	
179	W 4 6 1 7 9 3	Snap-ring (for Fig. 176)	1	
180	W 4 5 0 9 5 9	Eccentric link	1	
181	W 4 4 6 3 7 0	Clutch plate (for Fig. 180)	1	
182	W 5 0 1 1 6 3	Spring (for Fig. 181)	1	
183	W 5 0 1 1 6 2	Screw (for Fig. 182)	1	
184	W 4 4 6 3 7 1	Cover plate (for Fig. 181)	1	
185	W 5 0 0 7 9 1	Screw (for Fig. 184)	2	
186	W 3 2 0 0 7 6	Feed rock shaft crank rod	1	
187	W 4 5 0 9 6 1	Feed lifting rock shaft crank rod	1	
909		Feed regulator complete	1	

PRESSER FOOT MECHANISM

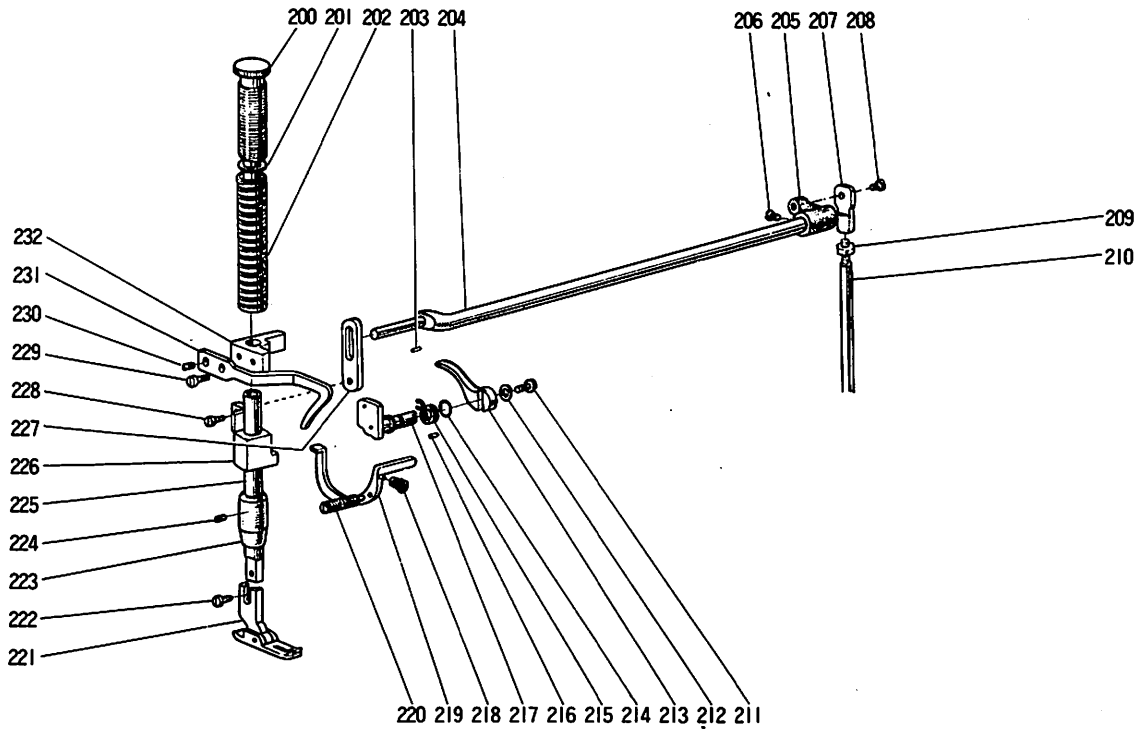


Fig. No.	Part No.	Name of Part	Amt. req	Remarks
200	W502440	Pressure regulating thumb screw	1	
201	W502439	Presser bar guide	1	
202	W502444	Presser spring	1	
203	W501874	Stopper pin (for Fig. 204)	1	
204	W450108	Knee lifter lever	1	
205	W502103	Knee lifter crank	1	
206	W502945	Set screw (for Fig. 205)	1	
207	W450109	Knee lifter lever joint joint	1	
208	W502104	Screw (for Fig. 207)	1	
209	B509177	Nut (for Fig. 210)	1	
210	W450110	Knee lifter lever connecting rod	1	
211	B508848	Screw (for Fig. 213)	1	
212	W462617	Washer (for Fig. 211)	1	
213	W447053	Presser bar lifter	1	
214	W461758	O-ring (for Fig. 217)	1	
215	W502141	Spring (for Fig. 217)	1	
216	W502150	Stopper pin (for Fig. 215)	1	
217	W450151	Presser bar lifter cam	1	
218	B409092	Spring (for Fig. 219)	1	
219	W502086	Tension releasing lever	1	
220	W502123	Set screw (for Fig. 219)	1	
221	W450580	Presser foot	1	
222	W464016	Screw (for Fig. 221)	1	
223	W502081	Presser bar bushing	1	
224	W500489	Set screw (for Fig. 223)	1	
225	W502079	Presser bar	1	
226	W450066	Presser bar lifting bracket	1	
227	W502084	Knee lifter lever link	1	
228	B509180	Screw (for Fig. 227)	1	
229	W500092	Screw (for Fig. 231)	1	
230	B509088	Set screw (for Fig. 232)	1	
231	W502083	Thread guide	1	
232	W502082	Presser bar holder	1	

FEED ROCK SHAFT MECHANISM

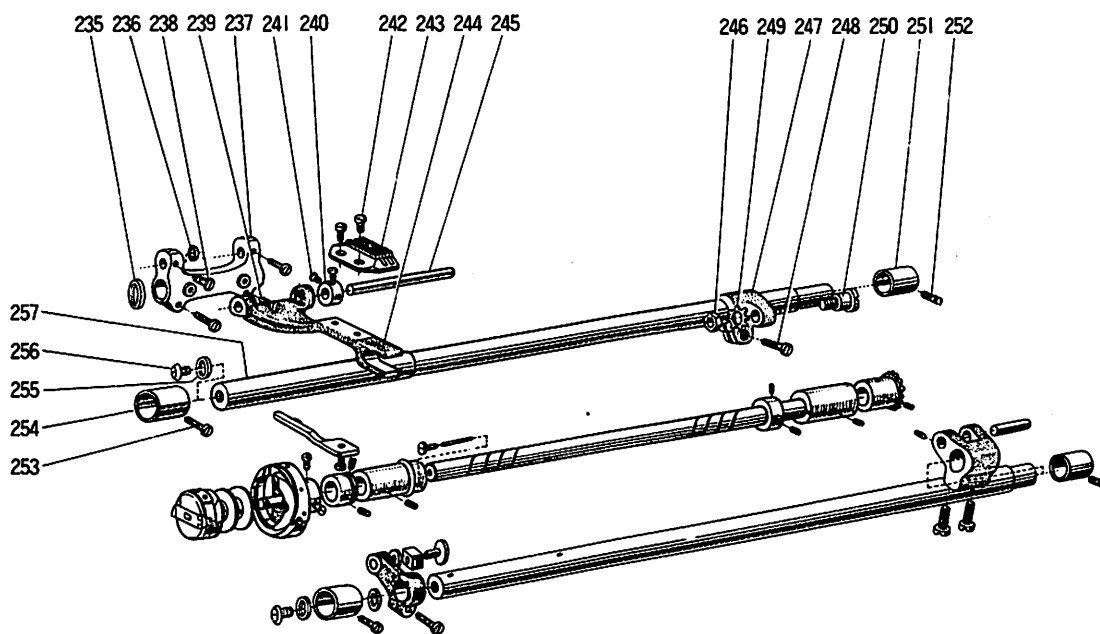


Fig. No.	Part No.	Name of Part	Amt. req	Remarks
2 3 5	W 5 0 2 4 6 7	Slide washer (for Fig. 237)	1	
2 3 6	W 5 0 2 4 8 0	Slide washer (for Fig. 244)	1	
2 3 7	W 4 5 6 5 1 8	Feed rock shaft crank (left)	1	
2 3 8	W 5 0 0 2 9 4	Set screw (for Fig. 245)	2	
2 3 9	W 5 0 1 8 8 9	Screw (for Fig. 237)	2	
2 4 0	W 5 0 1 4 4 2	Collar (for Fig. 244)	1	
2 4 1	W 5 0 0 7 4 1	Set screw (for Fig. 240)	2	
2 4 2	B 5 0 8 8 5 7	Screw (for Fig. 243)	2	
2 4 3	W 4 6 2 6 0 4	Feed dog	1	
2 4 4	W 4 4 7 7 5 2	Feed bar	1	
2 4 5	W 5 0 1 4 4 7	Feed bar shaft	1	
2 4 6	B 5 0 8 9 7 1	Nut (for Fig. 250)	1	
2 4 7	W 4 5 0 9 6 2	Feed rock shaft crank (right)	1	
2 4 8	W 5 0 1 0 0 9	Screw (for Fig. 247)	2	
2 4 9	W 4 6 1 7 9 7	Lock washer (for Fig. 250)	1	
2 5 0	W 4 5 4 8 7 0	Screw (for feed rock crank rod)	1	
2 5 1	W 4 4 6 1 7 3	Feed rock shaft bushing (right)	1	
2 5 2	W 5 0 0 5 0 9	Set screw (for Fig. 251)	1	
2 5 3	B 5 0 9 0 8 8	Set screw (for Fig. 254)	1	
2 5 4	W 4 5 4 8 7 5	Feed rock shaft bushing (left)	1	
2 5 5	W 5 0 1 1 1 0	Rubber gasket (for Fig. 257)	1	
2 5 6	W 5 0 1 1 1 1	Screw (for Fig. 255)	1	
2 5 7	W 4 5 4 8 7 6	Feed rock shaft	1	

ROTATING HOOK SHAFT & FEED LIFTING ROCK SHAFT MECHANISM

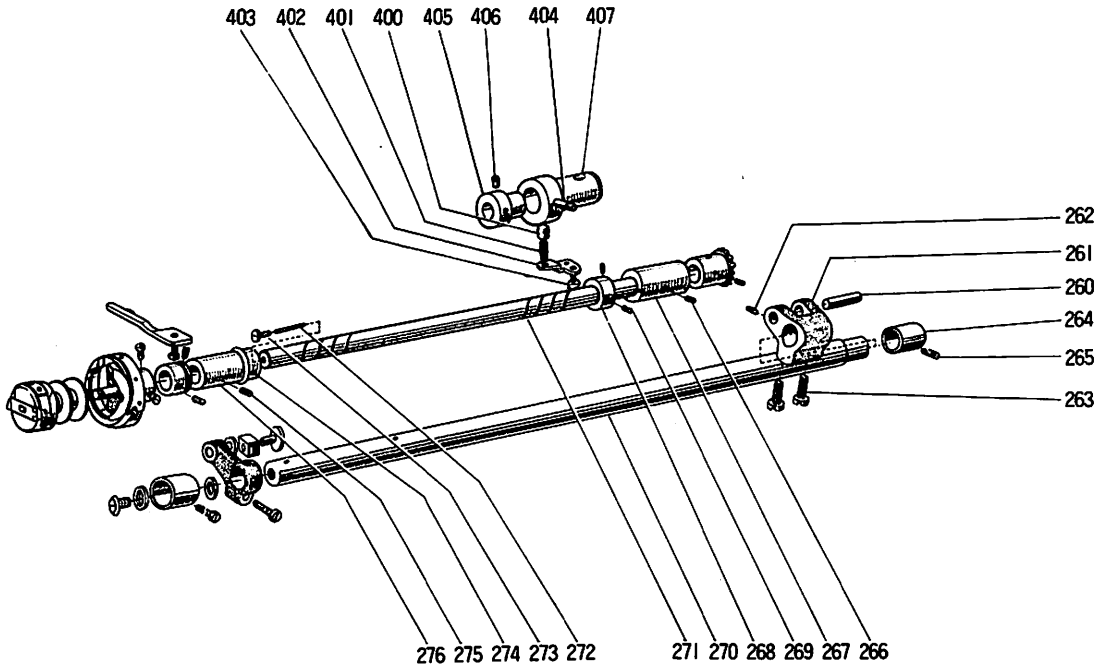


Fig. No.	Part No.	Name of Part	Amt. req	Remarks
260	W501107	Set pin (for feed lifting rock crank rod)	1	
261	W447173	Feed lifting rock shaft crank (right)	1	
262	B503846	Set screw (for Fig. 261)	1	
263	W500509	Set screw (for Fig. 261)	2	
265	W509060	Set screw (for Fig. 264)	1	
264	W446173	Feed lifting rock shaft bushing (right)	1	
266	B509060	Set screw (for Fig. 267)	1	
267	W450100	Rotating hook shaft bushing (right)	1	
268	B422844	Collar (for Fig. 267)	1	
269	B508971	Set screw (for Fig. 268)	2	
270	W454877	Feed lifting rock shaft	1	
271	W450098	Rotating hook shaft	1	
272	W500231	Oil cotton braid	1	
273	W500190	Special screw (for Fig. 271)	1	
274	W462651	Snap spring (for Fig. 276)	1	
275	B509060	Set screw (for Fig. 276)	1	
276	W450099	Rotating hook shaft bushing (left)	1	
400	W461713	Spe-cial pin (for Fig. 401)	1	
401	W468847	Spring (for Fig. 402)	1	
402	W467869	Guide plate	1	
403	B508963	Screw (for Fig. 402)	1	
404	W467247	Pipe (for Fig. 407)	1	
405	W461710	Eccentric link	1	
406	B509087	Screw (for Fig. 405)	1	
407	W461709	Rotating hook shaft bushing (right)	1	

ROTATING HOOK SHAFT & FEED LIFTING ROCK SHAFT MECHANISM

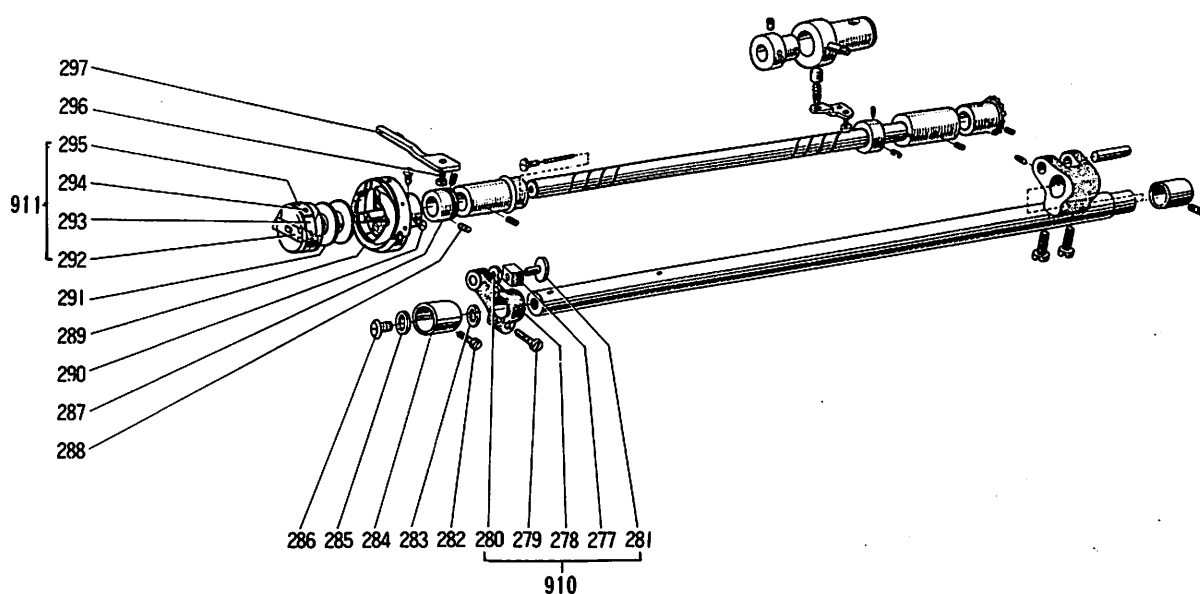


Fig. No.	Part No.	Name of Part	Amt. req	Remarks
910	W452475	Feed lifting rock shaft crank (left) complete	1	
277	W452474	Square block (for Fig. 278)	1	
278	W450096	Feed lifting rock shaft crank (left)	1	
279	W500182	Screw (for Fig. 278)	1	
280	W502336	Washer (for Fig. 277)	1	
281	W502337	Square block set pin (for Fig. 263)	1	
282	W500509	Set screw (for Fig. 284)	1	
283	W502467	Slide washer (for Fig. 278)	1	
284	W454875	Feed lifting rock shaft bushing (left)	1	
285	W501110	Rubber gasket (for Fig. 286)	1	
286	W501111	Screw (for Fig. 284)	1	
287	W502094	Oil flow preventing collar	1	
288	B503846	Set screw (for Fig. 287)	2	
289	W218864	Rotating hook	1	
290	W500194	Set screw (for Fig. 289)	2	
291	W462632	Bobbin	1	
911	W461742	Bobbin case complete	1	
292	B209055	Bobbin case	1	
293	W462630	Thread tension spring (for Fig. 292)	1	
294	B508875	Screw (for Fig. 292)	1	
295	B509067	Screw (for Fig. 292)	1	
296	B509061	Screw (for Fig. 297)	1	
297	W462633	Rotating hook positioner	1	

OIL LUBRICATION MECHANISM

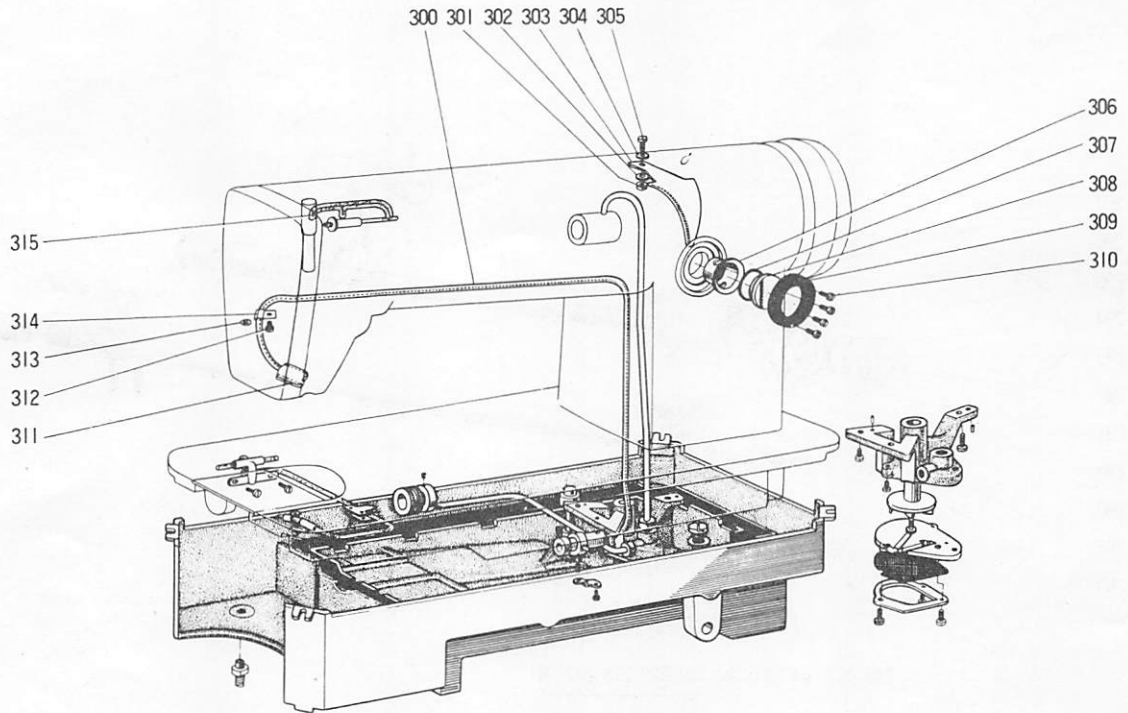


Fig. No.	Part No.	Name of Part	Amt. req	Remarks
3 0 0	W 4 4 6 2 3 2	Oil return pipe	1	
3 0 1	W 5 0 0 3 0 7	Nut (for Fig. 305)	1	
3 0 2	B 5 0 8 9 5 6	Washer (for Fig. 305)	1	
3 0 3	W 3 2 0 6 0 3	Oil guide plate	1	
3 0 4	W 5 0 1 6 9 2	Rubber gasket (for Fig. 305)	1	
3 0 5	B 5 0 8 8 4 8	Screw (for Fig. 303)	1	
3 0 6	W 4 4 6 2 2 9	Oil check window	1	
3 0 7	W 4 6 2 6 5 0	O-ring (for Fig. 308)	1	
3 0 8	W 5 0 2 0 9 8	Oil check sight glass	1	
3 0 9	W 4 4 6 2 3 0	Cover (for Fig. 308)	1	
3 1 0	W 4 6 7 8 8 2	Screw (for Fig. 309)	4	
3 1 1	W 5 0 2 3 9 4	Felt pouch (return oil filter)	1	
3 1 2	B 5 0 9 2 8 9	Screw (for Fig. 314)	1	
3 1 3	W 5 0 0 3 0 1	Washer (for Fig. 312)	1	
3 1 4	W 4 4 4 2 3 0	Oil return pipe holder	1	
3 1 5	W 4 4 4 1 3 8	Oil cotton braid (for thread take-up & needle bar oiling)	1	

OIL LUBRICATION MECHANISM

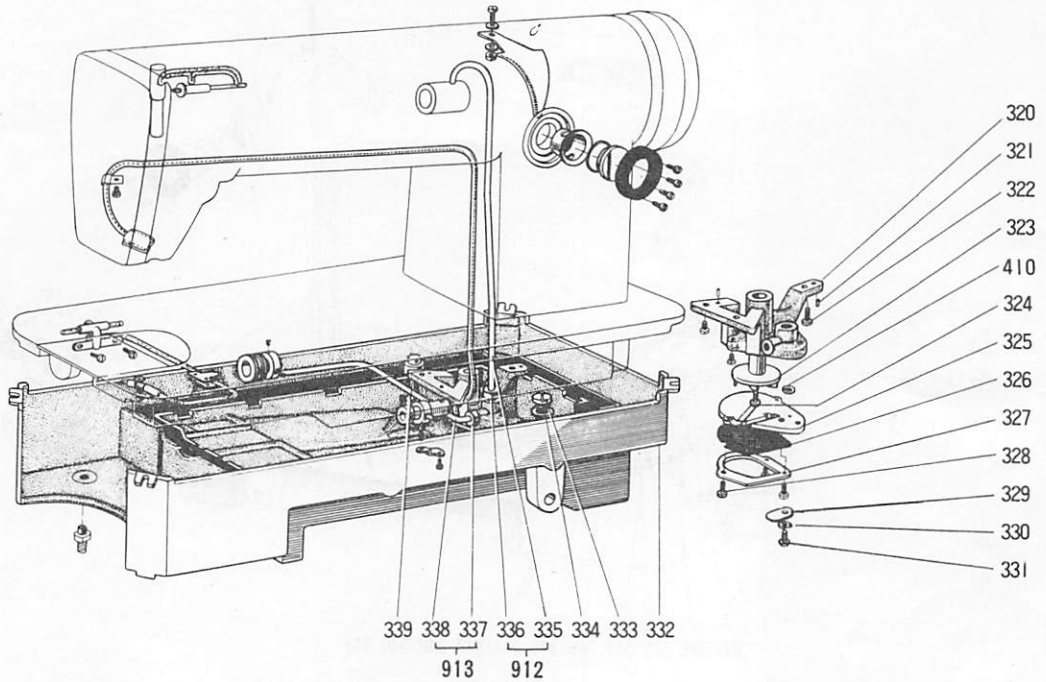


Fig. No.	Part No.	Name of Part	Amt. req	Remarks
320	W 3 2 1 2 9 4	Oil pump (body)	1	
321	W 5 0 0 2 1 2	Oil pump posi-tioning pin	2	
322	W 4 6 7 8 6 8	Screw (for Fig. 320)	3	
323	W 4 4 8 3 1 3	Oil pump impeller	1	
324	W 5 0 1 1 3 3	Screw (for Fig. 323)	1	
325	W 4 6 1 0 8 8	Oil suction plate	1	
326	W 5 0 2 3 6 3	Oil pump screen	1	
327	W 5 0 2 3 6 2	Oil pump screen cover	1	
328	W 5 0 1 0 8 6	Screw (for Fig. 327)	3	
329	W 5 0 2 3 6 1	Plate	1	
330	W 5 0 0 3 0 1	Spring washer (for Fig. 331)	1	
331	W 5 0 0 0 9 2	Screw (for Fig. 329)	1	
332	W 1 1 0 3 2 2	Oil reservoir	1	
333	W 5 0 1 3 2 7	Oil drain screw	1	
334	W 4 6 2 6 1 3	Rubber gasket (for Fig. 333)	1	
912	W 4 6 1 7 8 9	Oil pipe (for arm shaft) complete	1	
335	W 3 2 1 5 2 2	Oil pipe (for arm shaft)	1	
336	W 5 0 0 1 8 9	Oil pipe sleeve nut (for Fig. 335)	1	
913	W 4 6 1 7 4 5	Oil pipe (for hook shaft) complete	1	
337	W 5 0 1 1 3 5	Oil pipe sleeve nut (for Fig. 338)	1	
338	W 3 2 1 3 6 3	Oil pipe (for hook shaft)	1	
339	W 4 5 0 2 6 3	Knee lifter lifting rod	1	
410	S 5 6 1 1 2 1 H 0 4	Spring washer	1	

OIL LUBRICATION MECHANISM

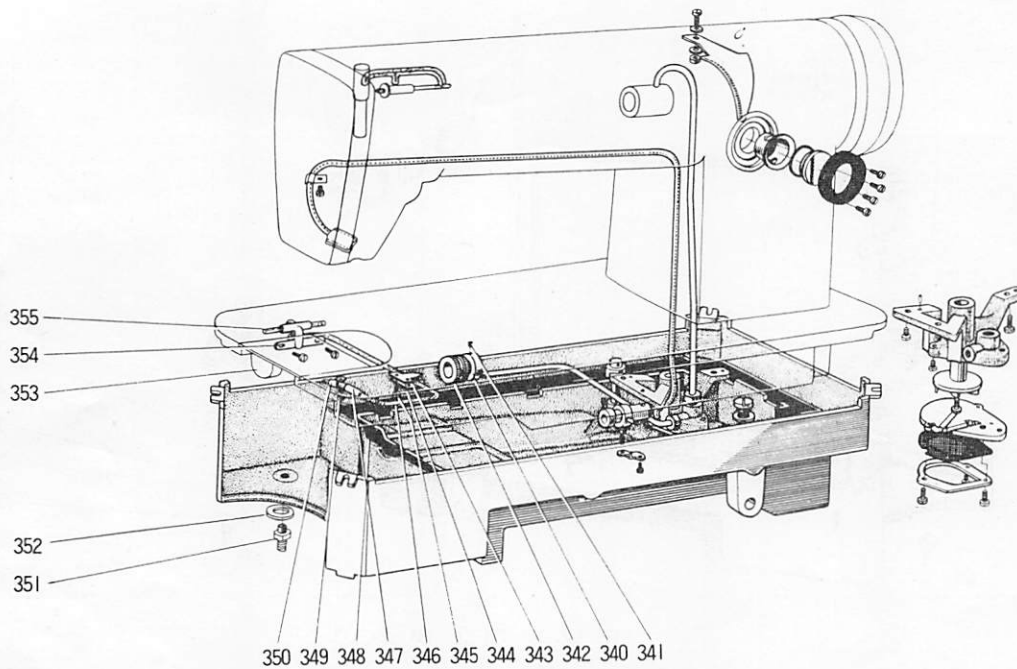


Fig. No.	Part No.	Name of Part	Amt. req	Remarks
3 4 0	W 5 0 2 0 9 7	Collar (for Fig. 342)	1	
3 4 1	W 5 0 0 5 8 8	Set screw (for Fig. 340)	2	
3 4 2	W 4 5 4 8 1 2	Oil adjustable ring (for hook oiling)	1	
3 4 3	W 5 0 2 0 9 5	Stopper (for Fig. 344)	1	
3 4 4	W 5 0 2 0 9 6	Oil cotton braid supporter	1	
3 4 5	W 5 0 0 7 9 1	Screw (for Fig. 346)	2	
3 4 6	W 4 6 6 8 1 4	Oil cotton braid (for feed mecha oiling)	1	
3 4 7	W 5 0 1 4 5 0	Oil cotton braid holder pipe	1	
3 4 8	W 3 2 1 2 9 5	U-shape rubber gasket (for Fig. 332)	1	
3 4 9	B 5 0 8 8 5 7	Screw (for Fig. 350)	1	
3 5 0	W 4 4 4 2 8 2	Oil cotton braid holder	1	
3 5 1	W 4 4 6 0 5 0	Bushing (for over flow oil pipe)	1	
3 5 2	W 5 0 0 8 1 2	Rubber gasket (for Fig. 351)	1	
3 5 3	B 5 0 3 8 4 2	Screw (for Fig. 354)	2	
3 5 4	W 4 4 7 7 6 2	Oil cotton braid supporter (for feed bar oiling)	1	
3 5 5	W 4 6 2 8 5 0	Oil cotton braid (for feed bar oiling)	1	



 **MITSUBISHI ELECTRIC CORPORATION**