

T·EVER

上袖机

Tacking machine (cylinder bed)

使用说明、样本目录

Instruction Manual

Parts Catalog

上海太成科技发展有限公司

SHANGHAI TAICHENG TECHNOLOGY DEVELOPMENT CO; LTD.

目 录

ONTENTS

使用说明书 (Instruction Manual)

中文 Chinese:

| | |
|--------------|-------|
| 1. 操作前注意事项 | 1 |
| 2. 主要技术规格 | 1 |
| 3. 操作准备 | 2 |
| 4. 面线穿法 | 2 |
| 5. 绕线调节 | 2 |
| 6. 压脚压力调节 | 2 |
| 7. 缝线张力 | 3 |
| 8. 机针与旋梭同步调节 | 3 - 4 |
| 9. 旋梭装卸 | 4 |

英文 English:

| | |
|--|-------|
| 1. PRECAUTIONS BEFORE STARTING OPERATION | 5 |
| 2. MAIN SPECIFICATIONS | 5 |
| 3. PREPARATION AND LUBRICATION | 6 |
| 4. THREADING | 6 |
| 5. WINDING ADJUSTMENT | 6 |
| 6. ADJUST THE PRESSURE OF PRESSER FOOT | 7 |
| 7. ADJUST THREAD TENSION | 7 |
| 8. TIME NEEDLE TO ROTATING HOOK | 7 - 8 |
| 9. REPLACE ROTATING HOOK | 8 |

零件样本 (Parts Catalog)

| | | |
|-----------|-----------------------------------|---------|
| A. 机壳部件 | ARM BED AND ITS ACCESSORIES | 9 - 11 |
| B. 上轴部件 | NEEDLE BAR AND TAKE-UP MECHANISM | 12 - 14 |
| C. 针距调节部件 | STITCH REGULATOR MECHANISM | 15 - 17 |
| D. 压脚摆动部件 | PRESSER LIFTING、FEEDING MECHANISM | 18 - 20 |
| E. 压脚提升部件 | PRESSER FOOT MECHANISM | 21 - 22 |
| F. 差动部件 | DIFFERENTIAL MECHANISM | 23 - 25 |
| G. 供油部件 | OIL LUBRICATION MECHANISM | 26 - 27 |
| H. 附件部件 | ACCESSORIES | 28 - 29 |

中文:

1、操作前注意事项

1) 安全注意事项:

- (1) 当电源开关打开后, 手指离开机针以及主动轮区域。
- (2) 当机器停止使用或操作者离开座位时, 请将电源关闭。
- (3) 当倾斜机头, 装拆皮带以及调整或移动机器时, 请将电源关闭。
- (4) 在缝纫机运转时, 避免将手指、头发、杆状物等靠近主动轮及皮带或马达。
- (5) 机器开动状态下, 请勿将手指插入挑线杆防护罩, 勿将手指置于机针或主动轮处。
- (6) 如果装设了皮带罩及护手罩或护眼罩, 在没有这些安全设施前请勿操作机器。

2) 操作前须知:

- (1) 如果油槽内没有加满油, 请勿操作机器。
- (2) 如果机器是滴油润滑, 在润滑前不要操作机器。
- (3) 当一台缝纫机首次运转时, 请验证主动轮的旋向。
(从主动轮方向看过去, 主动轮旋向为逆时针方向。)
- (4) 请核对电压(单相或三相)与铭牌上的数据是否相符。

3) 操作条件:

- (1) 避免在非正常高温(35°C或更高)或低温(5°C或更低)状态下使用机器, 否则机器将出现故障。
- (2) 避免在灰尘环境下使用机器。

2、主要技术规格

| 技术要求 | | 技术参数 |
|--------|----|--------------|
| 最高缝速 | | 1800 转/分 |
| 针距长度 | | 0-4mm |
| 针杆行程 | | 33.1mm |
| 压脚提升高度 | 手动 | 5mm |
| | 膝控 | 15mm |
| 机针 | | DB×1 #14 |
| 旋梭 | | 全自动润滑旋梭 |
| 润滑方式 | | 手动润滑 |
| 电动机 | | 370 瓦缝纫机专用电机 |

3、操作准备

1) 拭擦机器

机头装箱前为了防止机件生锈，各部分均涂有较厚的防锈油脂，同时机头装箱后，还可能在储藏和长途运输过程中，造成油脂硬化和灰尘积聚在机器表面，所以必须将机器表面的灰尘和油脂用煤油和洁净的软布拭擦干净。不要用油漆稀释剂对机头表面进行擦拭。

2) 检查

机器出厂时，虽经过周密的检查和试验，但在长途运输中也可能受到强烈的振动使机件松动或弯曲，所以应该作一次周密的检查，并用手转动主动轮，看机件间有无转动困难、碰撞现象或其它不均匀的阻力及不正常的声响，如有，则应作适当的调整，机器情况正常后才可试车。

4、面线穿法

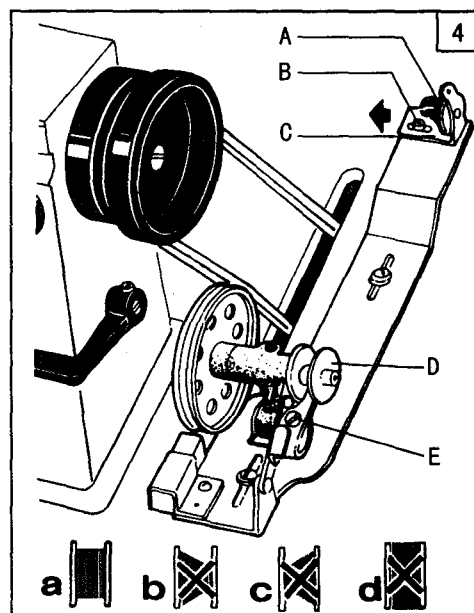
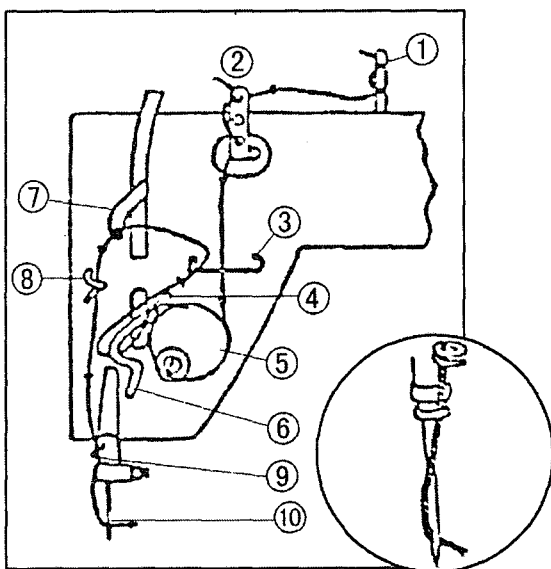
挑线杆在最高位置时，按图（3）所示序号穿线。

5、绕线调节（图 4）

梭芯线应排列整齐而紧密。如松浮不紧，可以加大过线架夹线板 A 的压力。如排列不齐，则要移动过线架 C 的位置进行调整。调整时，先松开过线架螺钉 B，单边绕线成 b 时，向右移动过线架，单边绕线成图 c 时，向左移动过线架，自动排列整齐成图 a 后，再紧固之。

注意：绕涤纶、尼龙线时，特别要放松绕线压力，否则梭芯 D 就可能产生断裂变形。

梭芯线不要绕得过满，否则容易散落，适当的绕线量为平行绕线至梭芯外径的 80%。绕线量由满线跳板上的满线度调节螺钉 E 加以调节。



6、压脚压力调节（图 7）

压脚的压力，要根据缝料的厚度加以调节。首先旋松调压螺钉锁紧螺母 A，缝纫厚料时，应加大压脚压力，这时将机头顶部的调压螺钉按图 a 所示箭头方向转动，反之，缝纫薄料时，可按图 b 所示方向，转动调压螺钉，以减少压脚的压力，最后旋紧调压螺钉锁紧螺母 A。

7、缝线张力（图 10、图 11）

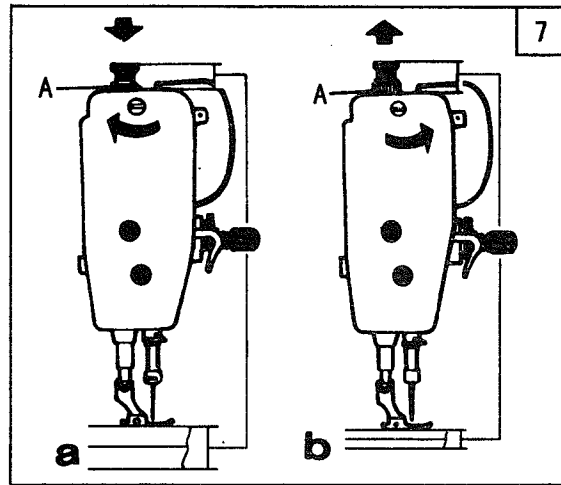
缝线的张力要根据缝料的差别，缝线的粗细以及其他一些因素而变动。

实际使用中，是根据缝纫出来的线迹，来调整底、面线的张力，使之得到正常的线迹。

底线张力调整，只要用小号螺钉起子旋转梭芯套上梭皮螺钉 A，加大和减少底线压力即可。

一般来说，底线如采用 60# 棉线，梭芯装入梭芯套后，拉出缝线穿过梭芯套线孔，捏住线头吊起梭芯套，梭芯套则能缓缓下落，就可以使用。

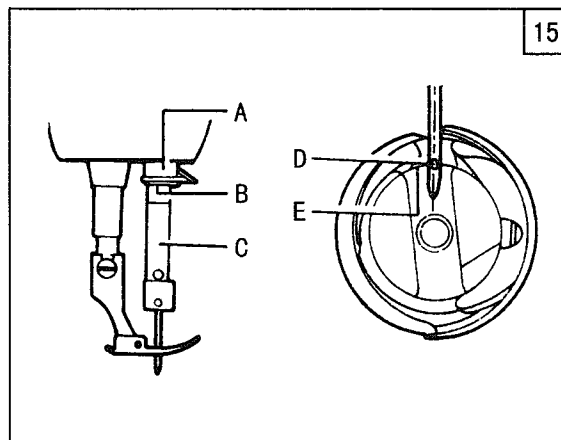
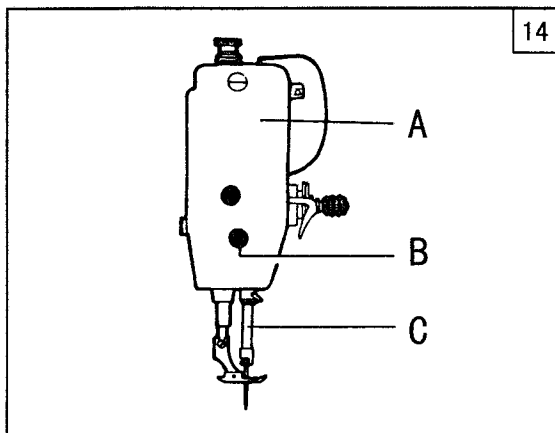
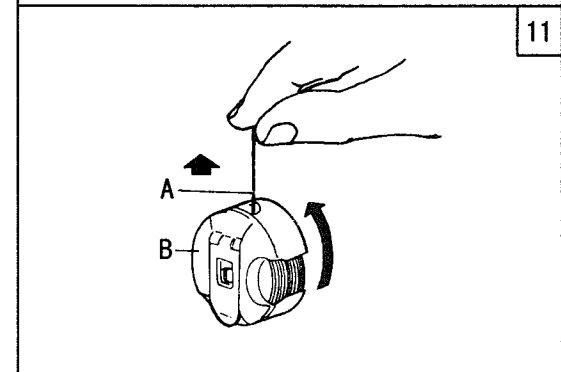
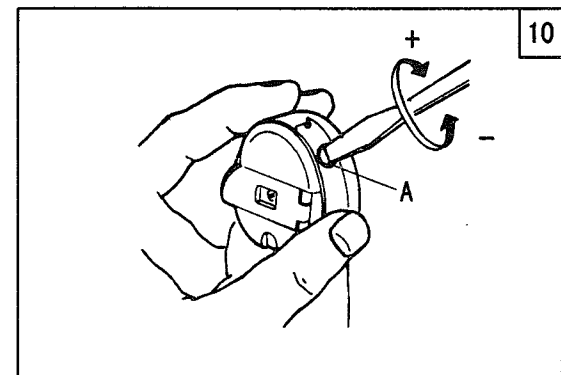
面线张力以底线张力为基准。面线张力调整，主要通过改变夹线组件中挑线簧张力，挑线簧摆动幅度，夹线簧张力，夹线板及线勾的位置等来实现。



8、机针与旋梭同步调节

1) 机针位置的调节：（图 14、图 15）

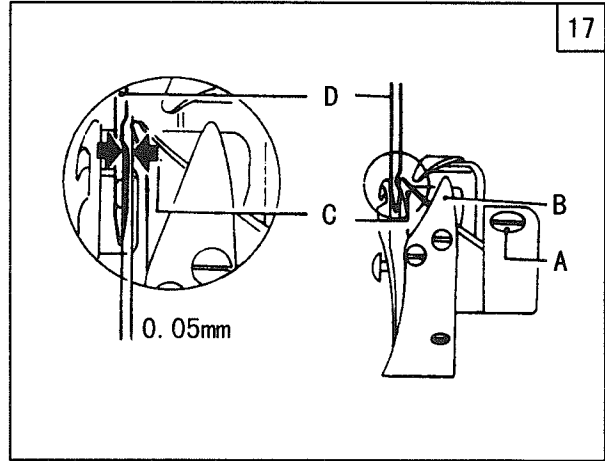
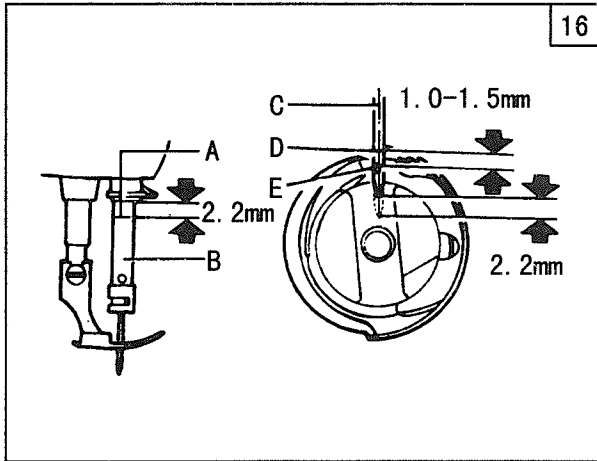
用手转动主动轮，使针杆 C 下降至最低位置，卸下面板 A 上的橡皮塞，旋松针杆 C 上的针杆接头螺钉 B，上下移动针杆 C，定出同步位置（针杆的同步位置：针杆下降至最低位置时，针杆上的同步标记 B 与套筒 A 下端面成一位置，这时机针线孔的中心 D 与旋梭内面 E 也成一位置，如图 15 所示位置），旋紧针杆接头螺钉 B，塞上橡皮塞即可。



2) 旋梭同步的调节 (图 16、图 17)

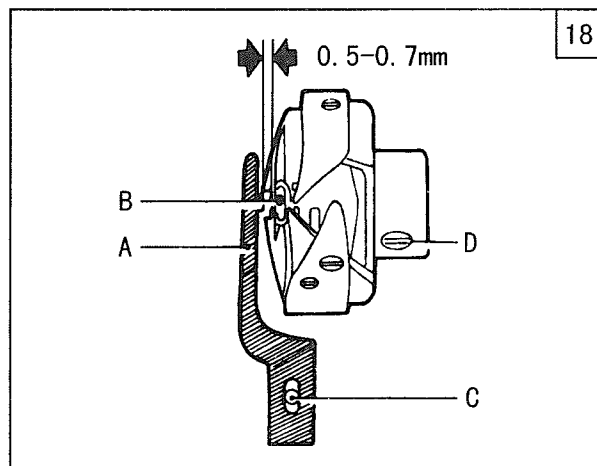
旋梭与机针之间的相互运动关系,对缝纫性能的影响很大。标准的同步关系是(图 16):当机针向下运动到最低位置时,目测针杆同步标记 A 针杆轴套下端面间距为 2.2mm,把针杆 B 从最低位置上升 2.2mm,这时旋梭勾线尖 D 应与机针的中心线 C 一致,在此位置时,勾线尖 D 高于机针孔 E 上边 1.0—1.5mm。

在调节旋梭同步关系时,还要注意到旋梭尖与机针的侧面间隙问题(图 17)。机针 D 缺口的底部与旋梭勾线尖 C 的间隙为 0.05mm。



9、旋梭装卸 (图 18)

先将针杆上升到最高位置,拆下针板,取下机针和梭芯套。然后松开旋梭定位勾螺钉 C,取下旋梭定位勾 A,再旋松旋梭螺钉 D。在此位置如果取出旋梭,旋梭将会与牙架相碰,此时可以转动主动轮使牙架上升到最高位置。然后扭转旋梭让过牙架位置,即能很容易将旋梭取下。安装旋梭时,可以重复上述过程。注意:旋梭定位勾的安装位置应该是旋梭定位勾 A 的勾尖侧面与机针 B 的侧面一致,另外两侧面之间间隙为 0.5-0.7mm。



ENGLISH:

1. PRECAUTIONS BEFORE STARTING OPERATION

1) Safety Precautions:

- (1) When turning the power on, keep your hands and fingers away from the area around/under the needle and the area around the balance wheel.
- (2) Power must be turned off when the machine is not in use, or when the operator leaves the seat.
- (3) Power must be turned off when tilting the machine head, installing or removing the "V" belt, adjusting the machine, or when replacing.
- (4) Avoid placing fingers, hairs, bars etc., near the balance wheel, "V" belt, bobbin winder balance wheel, or motor when the machine is in operation.
- (5) Do not insert fingers into the thread take-up cover, under/around the needle, or balance wheel when the machine is in operation.
- (6) If a belt cover, finger guard, eye guard are installed, do not operate the machine without these safety devices.

2) Precautions before Starting Operation:

- (1) If the machine's oil pan has an oil sump, never operate the machine before filling it.
- (2) If the machine is lubricated by a drop oiler, never operate the machine before lubricating.
- (3) When a new sewing machine is first turned on, verify the rotational direction of the balance wheel with the power on. (The balance wheel should rotate counter-clockwise when viewed from the balance wheel.)
- (4) Verify the voltage and (single or three) phase with those given on the machine nameplate.

3) Precautions for Operating Conditions:

- (1) Avoid using the machine at abnormally high temperature (35°C or higher) or low temperature (5°C or lower) .
- (2) Avoid using the machine in dusty conditions.

2. MAIN SPECIFICATIONS

| PRODUCTING | | TECHNICS |
|-------------------|---------|----------------------|
| Max. sewing speed | | 1800 rpm |
| Stitch length | | 0-4mm |
| Needle bar stroke | | 33.1mm |
| Presser | By hand | 5mm |
| | By knee | 15mm |
| Needle | | DB×1 #14 |
| Rotating hook | | Auto lubricated hook |
| Lubrication | | Manual lubricate |
| Motor | | 370W clutch motor |

3. PREPARATION AND LUBRICATION

1) leaning the machine

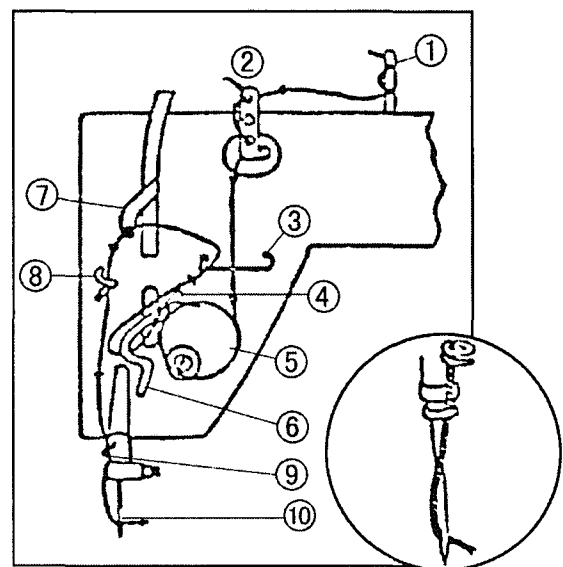
Before leaving the factory, the machine parts are coated with rust-preventive grease, which may be hardened and contaminated by dust during storage and shipment. This grease must be removed with gasoline.

2) Examination

Though every machine is confirmed by strict inspection and test before leaving the factory, the machine parts may be loose or deformed after long distance transportation with jolt. A thorough examination must be performed after cleaning the machine. Turn the balance wheel to see if there is running obstruction, parts collision, uneven resistance or abnormal noise. If these exist, adjustment must be made accordingly before run-in operation.

4.THREADING (Fig.3)

To thread the needle thread, raise needle bar to the upper end of its stroke, lead the thread from spool and perform threading as shown in Fig.3. To draw the bobbin thread, hold the end of the needle thread and turn the balance wheel to lower the needle bar and then to lift it to its highest position. Pull the needle thread and the bobbin thread is drawn up. Put the ends of needle thread and bobbin thread frontward under presser foot.



5. WINDING ADJUSTMENT (Fig.4)

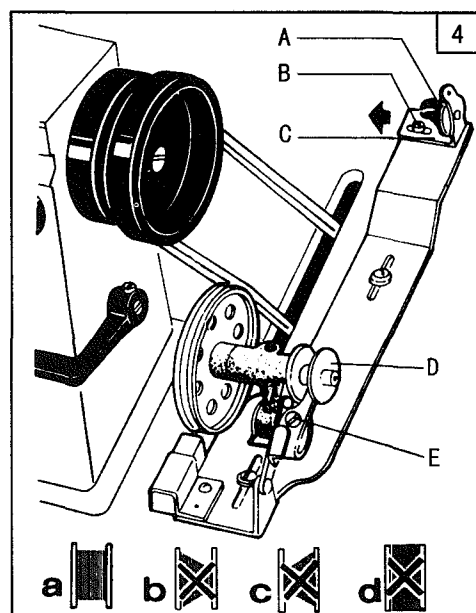
- (1) The wound bobbin thread should be neat and tight, if not, adjust the winding tension by turning tension stud nut (A) of bobbin winder tension bracket.

Note: nylon or polyester thread should be wound with little tension; otherwise, bobbin (D) might break or deform.

- (2) When the wound thread layer does not present a cylindrical shape as shown in Fig.4 (A), loosen set screw (B) of bobbin winder tension bracket and slide bracket (C) leftward or rightward. If thread is wound as shown in Fig.4 (B), move the bracket rightward, but if thread is wound as shown in Fig.4 (C), move the bracket leftward.

After adequately positioning the bracket, tighten set screw (B).

- (3) Do not overfill the bobbin. The optimum length of thread will fill about 80% of bobbin capacity. This can be adjusted by adjusting screw (E) of bobbin winder stop latch.

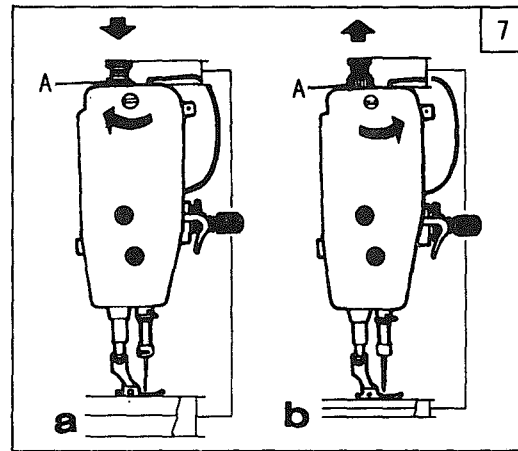


6. ADJUST THE PRESSURE OF PRESSER FOOT (Fig.7)

Pressure of presser foot is to be adjusted in accordance with thickness of materials to be sewn.

First loosen lock nut (A). For heavy materials, turn the pressure regulating thumb screw as shown in Fig.7 (A) to increase the pressure, while for light materials, turn the pressure regulating thumb screw as shown in Fig.7 (B) to decrease the pressure. Then tighten lock nut (A).

The pressure of presser foot is recommended to be less as long as normal feeding is ensured.

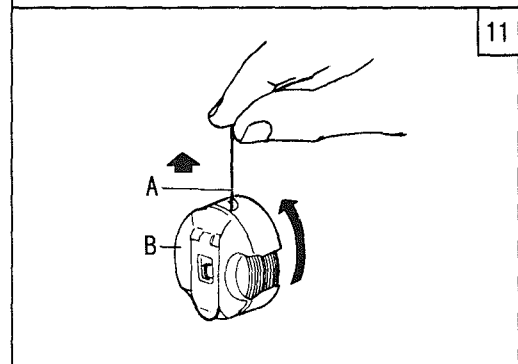
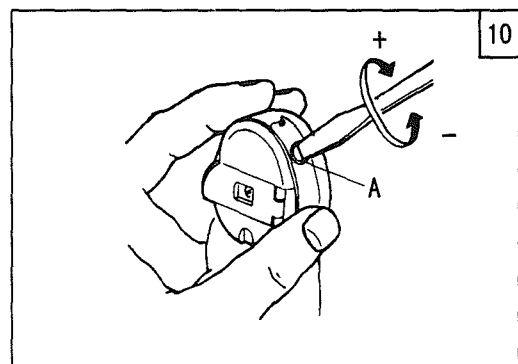


7. ADJUST THREAD TENSION (Fig.10, 11)

In principle, thread tension is to be adjusted in accordance with materials, thread and other factors.

In practice, thread tension is adjusted according to the stitches obtained. The needle thread tension should be adjusted with reference to the bobbin thread tension. Turn tension spring regulating screw (A) of bobbin case clockwise for more tension, or turn the screw counter-clockwise for less tension.

It is common practice to test the bobbin test the bobbin thread tension as shown in Fig.11. Hold the end of the thread from delivery eye. If the bobbin case is falling slowly, the proper tension is obtained. The needle thread tension can be adjusted by setting (1) the take-up spring tension, (2) the thread take-up spring stroke and (3) tension spring. All these adjustments will be described in the following.

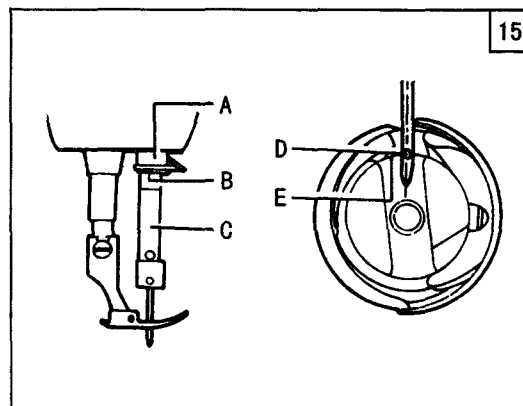
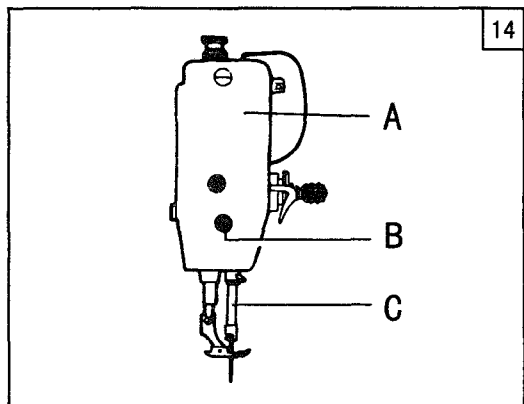


8. TIME NEEDLE TO ROTATING HOOK

(Fig. 14, 15, 16, 17)

1) Adjusting the needle position (Fig.14, 15)

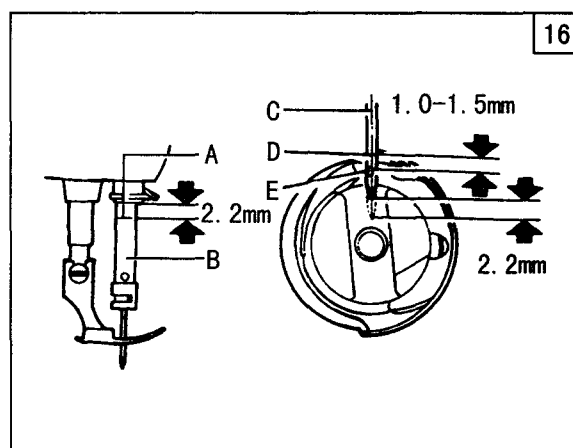
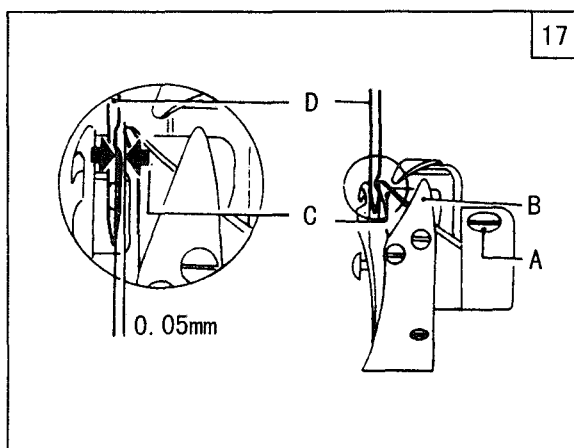
- (1) Turn balance wheel by hand to bring needle bar (C) to the lowest position of its stroke.
- (2) Remove rubber plug from face plate (A).
- (3) Loosen set screw (B) of needle bar adaptor.
- (4) Move needle bar (C) vertically to adjust needle timing.
- (5) After the adjustment, tighten set screw (B) and put in the rubber plug. The standard needle timing (Fig.15) is to align timing mark (B) on the needle bar and the bottom of needle bar bushing (A) and meanwhile align the inner surface (E) of the hook and the center of needle eye (D) when the needle bar gets down to its lowest position.



2) Adjusting the hook point timing (Fig.16, 17)

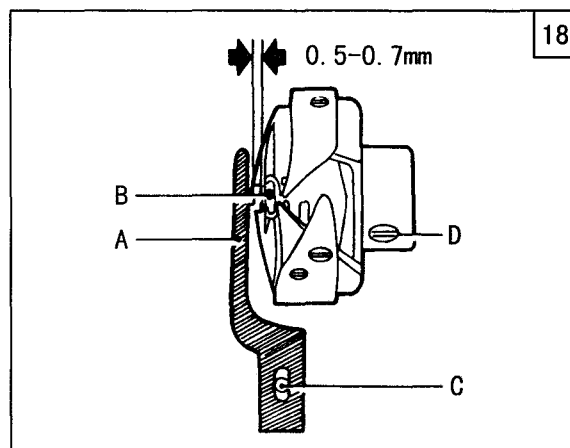
Timing of needle motion to rotating hook motion has a great effect on sewing performance. The standard hook point timing (Fig.16) is to align hook point (D) and needle centerline (C) when needle bar (B) is lifted by 2.2mm from the lower end of its stroke. Besides, hook point (D) should be 1.0-1.5mm above the upper end of needle eye (E).

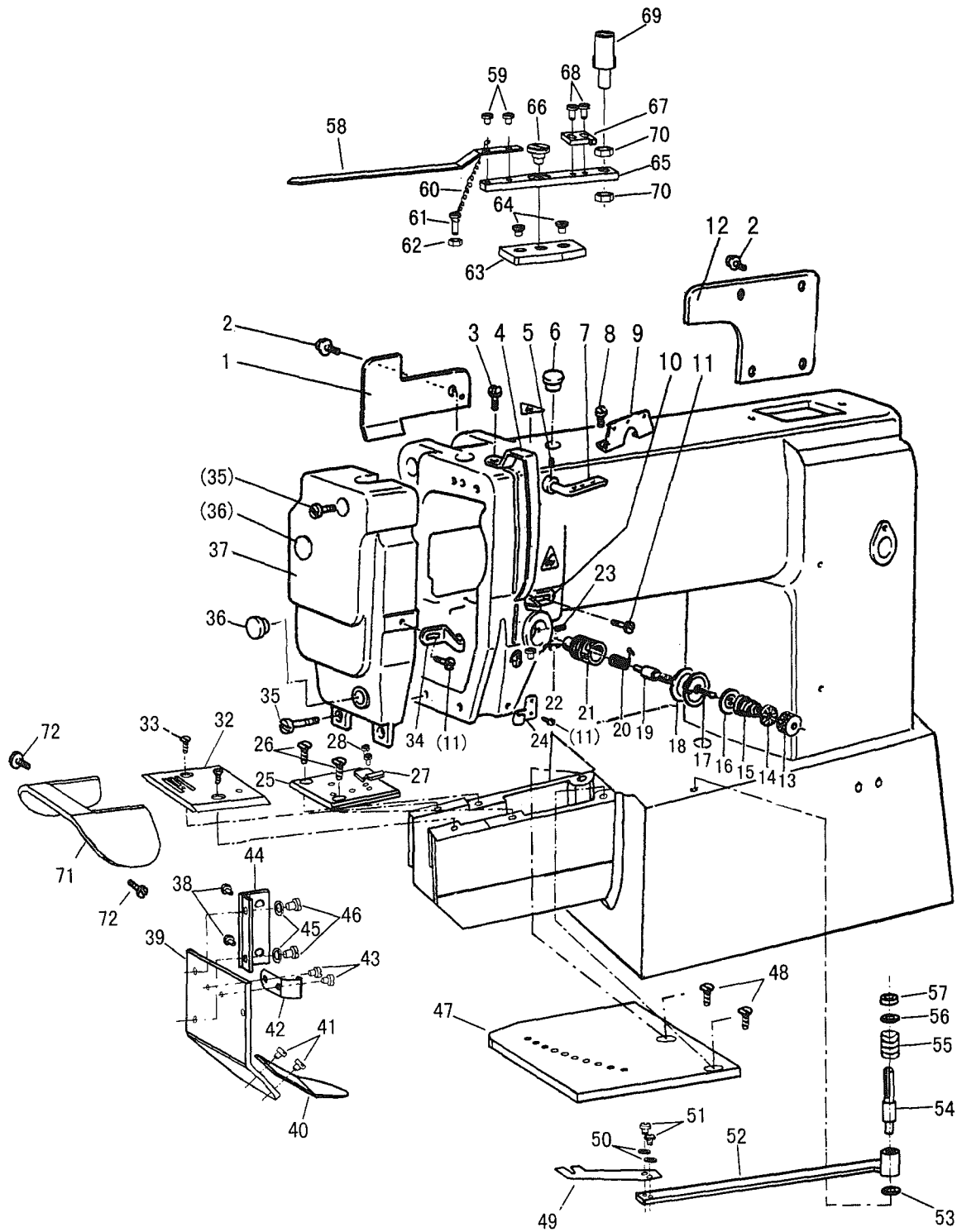
When adjusting the hook point timing, also notice that the clearance between the bottom of needle notch and hook point (C) should be approx. 0.05mm (Fig.17).



9. REPLACE ROTATING HOOK (Fig.18)

- (1) Lift needle bar to the highest position of its stroke.
- (2) Remove throat plate; take down needle and bobbin case.
- (3) Loosen screw (C) of hook positioner and take down hook positioner (A).
- (4) Loosen two screw (D) of rotating hook.
- (5) Turn the balance wheel to raise feed bar to its highest position, then take down the rotating hook by turning it away from feed bar.
- (6) Installing the hook can be done in reverse sequence. Note that needle (B) and the convex surface of hook positioner (A) should align with a clearance of 0.5-0.7mm between them.





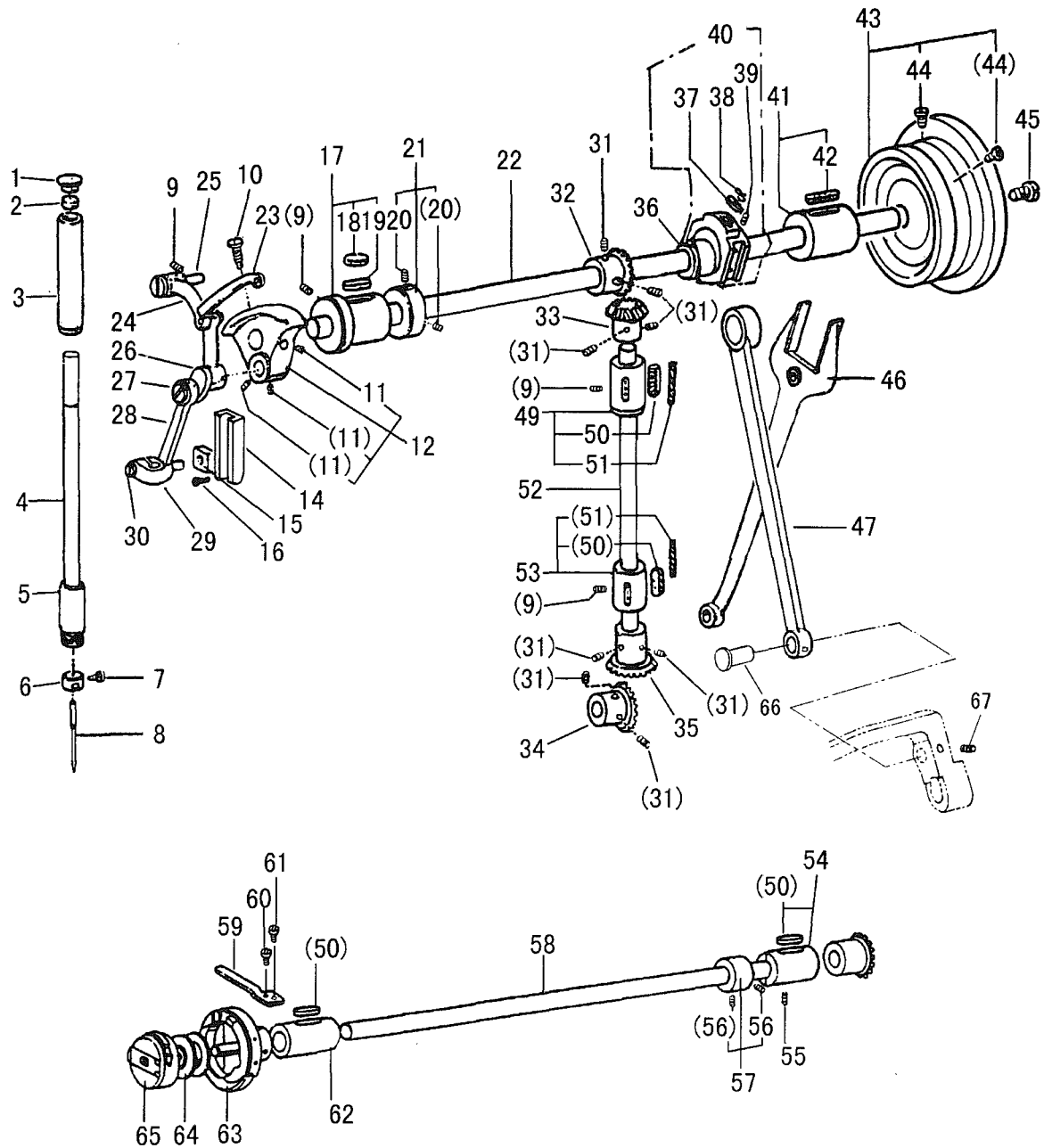
A. 机壳部件 ARM BED AND ITS ACCESSORIES

| 序号 Fig. No. | 图号 Part No. | 英文名称 English Description | 中文名称 Chinese Description | 数量 Pcs. | 备注 Remarks |
|----------------|----------------|-----------------------------------|-----------------------------|------------|---------------------|
| A01 | T2006B0065 | Oil shield plate | 机头防护罩 | 1 | |
| A02 | TA300B2170 | Screw | 后盖板螺钉组件 | 5 | |
| A03 | TA300C2030 | Screw | 挑线杆防护罩螺钉 | 1 | SM11/64(40)×8 |
| A04 | TA100C2030 | Thread take-up cover | 挑线杆防护罩 | 1 | |
| A05 | TA100B2110 | Screw | 三眼线勾螺钉 | 1 | SM11/64(40)×5.5 |
| A06 | T2000B2010 | Rubber plug | 机头橡皮塞 | 1 | |
| A07 | TA100B2100 | Thread guide | 三眼线勾 | 1 | |
| A08 | TA700B2060 | Screw | 线勾螺钉 | 1 | SM11/64(40)×7 |
| A09 | TA700B2050 | Thread guide | 三孔线勾 | 1 | |
| A10 | TA100B2140 | Thread guide | 线勾 | 1 | |
| A11 | TA106B0676 | Screw | 面板线勾螺钉 | 3 | SM9/64(40)×4 |
| A12 | TK812B8001 | Arm side cover | 后盖板 | 1 | |
| A13 | TA310B0701 | Oil thumb nut | 夹线螺母小组件 | 1 | |
| A14 | TA115B7010 | Thumb nut revolution stopper | 夹线螺母止动板 | 1 | |
| A15 | TA505B0671 | Thread tension spring | 夹线弹簧 | 1 | |
| A16 | TA310B0702 | Thread tension releasing disc | 松线板 | 1 | |
| A17 | TA115B0709 | Thread tension releasing pin | 松线钉 | 1 | |
| A18 | TA310B0705 | Thread tension disc | 夹线板 | 2 | |
| A19 | TA115B0701 | Thread tension stud | 夹线螺钉 | 1 | |
| A20 | TA505B0672 | Thread take-up spring | 挑线簧 | 1 | |
| A21 | TA310B0703 | Thread tension regulating bushing | 夹线调节座 | 1 | |
| A22 | TA115B0708 | Screw | 夹线调节座螺钉 | 1 | SM9/64(3.57)×40/4 |
| A23 | TA300B2080 | Screw | 夹线调节座固定螺钉 | 1 | 15/64"(5.95)×28/6.8 |
| A24 | TA500C2060 | Thread guide | 下过线勾 | 1 | |
| A25 | TK828B8001 | Cylinder cover (upper) | 小盖板 | 1 | |
| A26 | TA100C2190 | Screw | 滑块导轨螺钉 | 2 | SM11/64(40)×8 |
| A27 | TK829B8001 | Gauge bearing bracket stopper | 限位板 | 1 | |
| A28 | T3410C301L | Screw | 油线固定勾螺钉 | 2 | SM9/64(40)×4.5 |
| A32 | TK813B8001 | Needle plate | 针板 | 1 | |
| A33 | T2000B2050 | Screw | 针板螺钉 | 2 | 11/64"(4.37)×40 |
| A34 | TA106B0675 | Thread guide | 面板线勾 | 1 | |
| A35 | TA700B2030 | Screw | 面板螺钉 | 2 | |
| A36 | TA307B0674 | Rubber plug | 面板橡皮塞 | 2 | |
| A37 | T2005B0066 | Face plate | 面板 | 1 | |
| A38 | T409030060 | Screw | 十字槽盘头螺钉 | 2 | |
| A39 | TK818B8001 | Cylinder cover (front) | 旋梭盖板 | 1 | |
| A40 | TK819B8001 | Stop plate | 旋梭挡板 | 1 | |
| A41 | TA124B0713 | Screw | 推板簧螺钉 | 2 | SM3/32(56)×2.2 |
| A42 | TK820B8001 | Spring | 旋梭盖板卡簧 | 1 | |
| A43 | TA124B0713 | Screw | 推板簧螺钉 | 2 | SM3/32(56)×2.2 |
| A44 | T6671B8001 | Special hinge | 铰链组件 | 1 | |
| A45 | T005004030 | Washer | 小垫圈-A级 | 2 | |
| A46 | T3204D6511 | Screw | 圆柱头螺钉 | 2 | SM1/8(44)×3.5 |

A. 机壳部件 ARM BED AND ITS ACCESSORIES

| 序号 Fig. No. | 图号 Part No. | 英文名称 English Description | 中文名称 Chinese Description | 数量 Pcs. | 备注 Remarks |
|----------------|-----------------------|--|-----------------------------|------------|----------------|
| A47 | TK830B8001 | Scale plate | 差动指示板 | 1 | |
| A48 | HA100C2190 | Scale screw | 圆柱头螺钉 | 2 | SM11/64(40)×8 |
| A49 | TK805H8001 | Clapboard | 差动隔板 | 1 | |
| A50 | T6600C0410 | Washer | 垫圈 | 2 | |
| A51 | T32132D104 | Screw | 圆柱头螺钉 | 2 | SM9/64(40)×3.5 |
| A52 | TK806H8001 | Gauge bearing bracket stopper | 连接板 | 1 | |
| A53 | T7362G8001 | Gauge bearing bracket | 垫圈 | 1 | |
| A54 | TK809H8001 | Gauge bearing bracket stud | 轴位螺钉 | 1 | |
| A55 | TK810H8001 | Gauge spring | 压簧 | 1 | |
| A56 | T7342G8001 | Gauge washer | 垫圈 | 1 | |
| A57 | TA115B0702 | Gauge nut | 夹线螺母 | 1 | SM1/4(40) |
| A58 | TK862H8001 | Indicator | 指示针 | 1 | |
| A59 | TK862H8001 | Indicator screw T3410C301L | 圆柱头螺钉 | 2 | SM9/64(40)×4.5 |
| A60 | TK863H8001 | Spring | 拉簧 | 1 | |
| A61 | TA7311C606 | Spring catch screw | 送布轴曲柄(右)螺钉 | 1 | SM11/64(40)×15 |
| A62 | T5729F8001 | Spring Nut | 导柱螺帽 | 1 | SM11/64(40) |
| A63 | TK867H8001 | Indicator bearing bracket supporting block | 安装板 | 1 | |
| A64 | T2000B2050 | Indicator screw | 面板垫片螺钉 | 2 | SM11/64(40) |
| A65 | TK861H8001 | Indicator bearing bracket | 转板 | 1 | |
| A66 | TK868H8001 | Indicator stud screw | 轴位螺钉 | 1 | SM15/64(28) |
| A67 | TK866H8001 | Indicator bearing bracket stopper | 限位板 | 1 | |
| A68 | TA7311CC06 | Throat screw | 连杆偏心轴螺钉 | 2 | SM9/64(40)×6.5 |
| A69 | TK865H8001 | Indicator bearing bracket joint rod | 转向块 | 1 | |
| A70 | T2010J0066 | Indicator nut | 提升压脚调节螺母 | 2 | SM9/32(28) |
| A71 | TK814B7101 | Sew platform | 缝台 | 1 | |
| A72 | TA7311CC06 | Screw | 连杆偏心轴螺钉 | 2 | SM9/64(40)×6.5 |

B. 上轴部件 NEEDLE BAR AND TAKE-UP MECHANISM



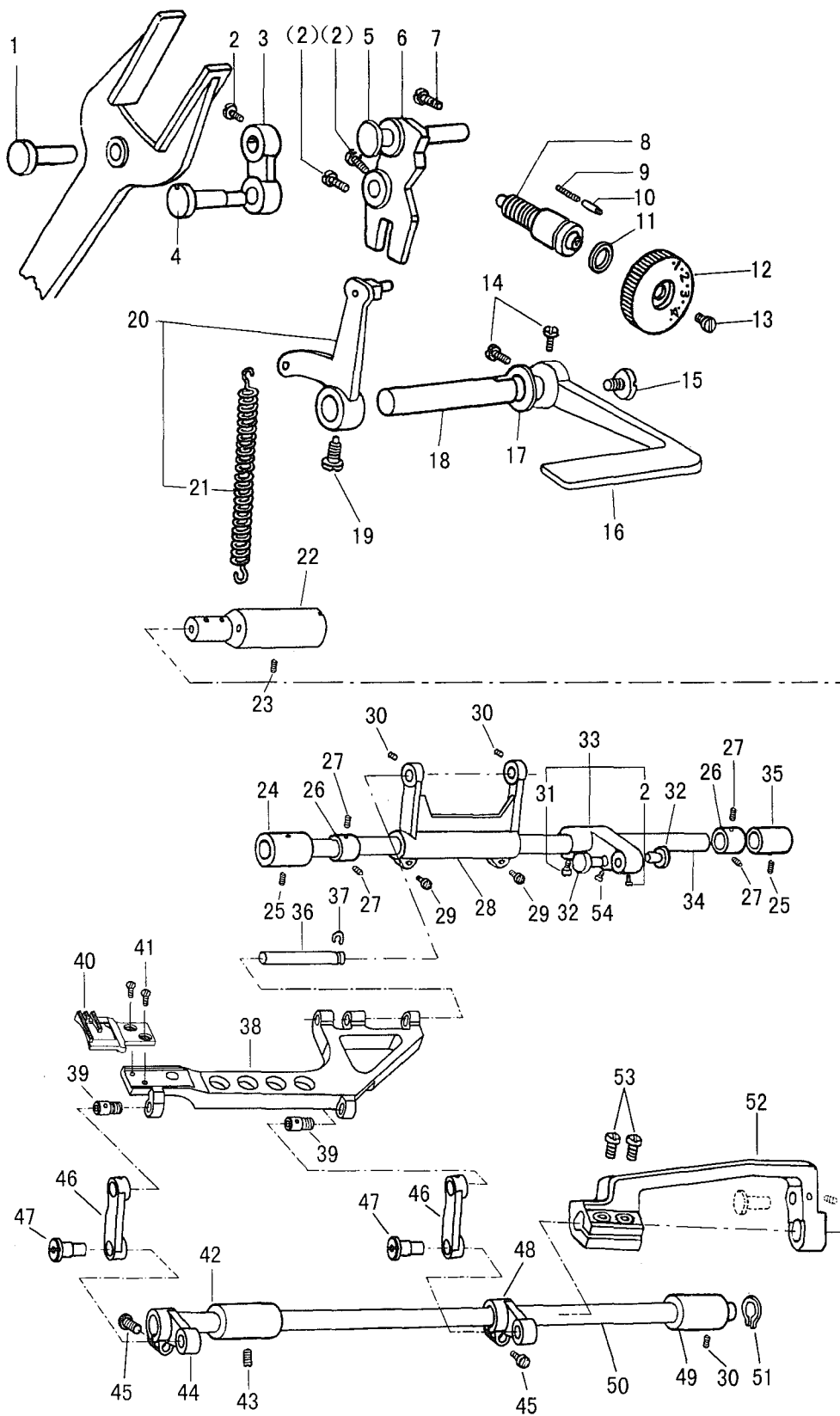
B. 上轴部件 NEEDLE BAR AND TAKE-UP MECHANISM

| 序号 Fig. No. | 图号 Part No. | 英文名称 English Description | 中文名称 Chinese Description | 数量 Pcs. | 备注 Remarks |
|----------------|----------------|----------------------------------|-----------------------------|------------|------------------|
| B01 | T2003M0067 | Cap | 针杆轴套(上)塑料塞 | 1 | |
| B02 | TA100C2100 | Cap | 针杆轴套(上)毡塞 | 1 | |
| B03 | T2009B0067 | Needle bar bushing (upper) | 针杆轴套(上) | 1 | |
| B04 | T1707G8001 | Needle bar | 针杆 | 1 | |
| B05 | TA500C2050 | Needle bar bushing (under) | 针杆轴套(下) | 1 | |
| B06 | T2000G2020 | Thread guide | 针杆过线环 | 1 | |
| B07 | TA100C2170 | Screw | 夹针螺钉 | 1 | SM1/8(44) × 4.5 |
| B08 | 140 | Needle | 机针 | 1 | |
| B09 | TA100C2020 | Screw | 挑线连杆铰链轴螺钉 | 1 | |
| B10 | TA100C2070 | Screw | 针杆曲柄定位螺钉 | 1 | SM9/32(28) × 14 |
| B11 | TA307C0662 | Screw | 挑线曲柄定位螺钉 | 3 | SM1/4(40) × 6 |
| B12 | T2000C2020 | Needle brace | 针杆曲柄组件 | 1 | |
| B14 | TA100C2180 | Guide for slide block | 针杆接头滑块导轨 | 1 | |
| B15 | TA100C2200 | Slide block | 针杆接头滑块 | 1 | |
| B16 | TA300C2030 | Screw | 挑线杆防护罩螺钉 | 2 | SM11/64(40) × 8 |
| B17 | T2009B0741 | Arm shaft bushing (left) | 上轴轴套(左) | 1 | |
| B18 | T2009B0742 | Felt | 上轴轴套(左)长羊毛毡 | 1 | D2 × 14 |
| B19 | T2009B0743 | Felt | 上轴轴套(左)羊毛毡 | 1 | |
| B20 | TA105D0662 | Screw | 上轴紧圈螺钉 | 2 | SM1/4(40) × 4 |
| B21 | TA108G0661 | Collar for arm shaft assy | 送布轴紧圈 | 1 | |
| B22 | T2000C2010 | Arm shaft | 上轴 | 1 | |
| B23 | TA3111C104 | Thread take-up lever | 挑线杆 | 1 | |
| B24 | TA304C0012 | Thread take-up lever link | 挑线连杆 | 1 | |
| B25 | TA104C0653 | Hinge pin | 挑线连杆铰链轴 | 1 | |
| B26 | TA104C0654 | Thread take-up crank | 挑线曲柄 | 1 | |
| B27 | TA104C0656 | Set screw (left-handed) | 挑线曲柄螺钉(左旋) | 1 | |
| B28 | TA304C0653 | Thread take-up lever link | 针杆连杆 | 1 | |
| B29 | TA104C0658 | Needle bar adaptor | 针杆接头 | 1 | |
| B30 | TA104C0659 | Screw | 针杆接头螺钉 | 1 | SM9/64(40) × 6 |
| B31 | TA108C0663 | Screw | 伞齿轮螺钉 | 8 | SM1/4(40) × 7 |
| B32 | TA113D2112 | Bevel gear for arm shaft | 上轴伞齿轮 | 1 | |
| B33 | TA113D2122 | Bevel for vertical shaft (upper) | 竖轴伞齿轮(上) | 1 | |
| B34 | TA113D2212 | Bevel for hook shaft | 下轴伞齿轮 | 1 | |
| B35 | TA113D2222 | Bevel for vertical shaft (under) | 竖轴伞齿轮(下) | 1 | |
| B36 | TA112D3012 | C-type stop ring | 拾牙连杆挡圈 | 1 | |
| B37 | T20111C206 | Felt | 牙叉滑块羊毛毡 | 1 | |
| B38 | T20111C106 | Spring | 偏心连杆毛毡夹 | 1 | |
| B39 | TA3411D308 | Screw | 送布凸轮螺钉 | 2 | SM15/64(28) × 7 |
| B40 | TK810C7101 | Upper feed lifting cam | 送布凸轮小组件 | 1 | |
| B41 | T2009B0732 | Arm shaft bushing (right) | 上轴轴套(右) | 1 | |
| B42 | T2009B0731 | Felt | 上轴轴套(右)羊毛毡 | 1 | |
| B43 | TA110D0671 | Pulley assy | 主动轮 | 1 | |
| B44 | TA110D0672 | Screw | 主动轮螺钉 | 2 | SM15/64(28) × 12 |

B. 上轴部件 NEEDLE BAR AND TAKE-UP MECHANISM

| 序号 Fig.No. | 图号 Part No. | 英文名称 English Description | 中文名称 Chinese Description | 数量 Pcs. | 备注 Remarks |
|---------------|----------------|-------------------------------------|-----------------------------|------------|----------------|
| B45 | TA100D2080 | Screw | 上轴油封螺钉 | 1 | SM11/32(28)×10 |
| B46 | T2006C0021 | Feed forked connecting rod | 牙叉 | 1 | |
| B47 | T2006C0012 | Connecting link | 拾牙连杆 | 1 | |
| B49 | T2009B0713 | Vertical shaft bushing (upper) | 竖轴轴套(上) | 1 | |
| B50 | T2009B0711 | Felt | 竖轴轴套羊毛毡 | 4 | |
| B51 | T2009B0712 | Yarn | 竖轴轴套(上)油线 | 2 | D2×38 |
| B52 | T2004D0065 | Vertical shaft | 竖轴 | 1 | |
| B53 | T2009B0721 | Vertical shaft bushing (under) | 竖轴轴套(下) | 1 | |
| B54 | T2009B0751 | Rotating hook shaft bushing (right) | 下轴轴套(右) | 1 | |
| B55 | T2000I2080 | Screw | 压脚限位螺钉 | 1 | |
| B56 | TA100C2090 | Screw | 针杆轴套(上)螺钉 | 2 | |
| B57 | TA305E0661 | Collar | 下轴紧圈 | 1 | |
| B58 | T2000E2030 | Rotating hook shaft | 下轴 | 1 | |
| B59 | TK813C8001 | Rotating hook position | 旋梭定位勾 | 1 | |
| B60 | T3100F2360 | Screw | 导轨螺钉 | 1 | SM9/64(40)×6.5 |
| B61 | T415030060 | Screw | 圆柱头内六角螺钉 | 1 | M3(0.5)×6 |
| B62 | TK815C8001 | Rotating hook shaft bushing (left) | 下轴轴套(左) | 1 | |
| B63 | TK808C7101 | Rotating hook complete | 旋梭组件 | 1 | |
| B64 | TA100E2170 | Bobbin | 梭芯 | 1 | |
| B65 | TA300E2070 | Bobbin case complete | 梭芯套组件 | 1 | |

C. 针距调节部件 STITCH REGULATOR MECHANISM



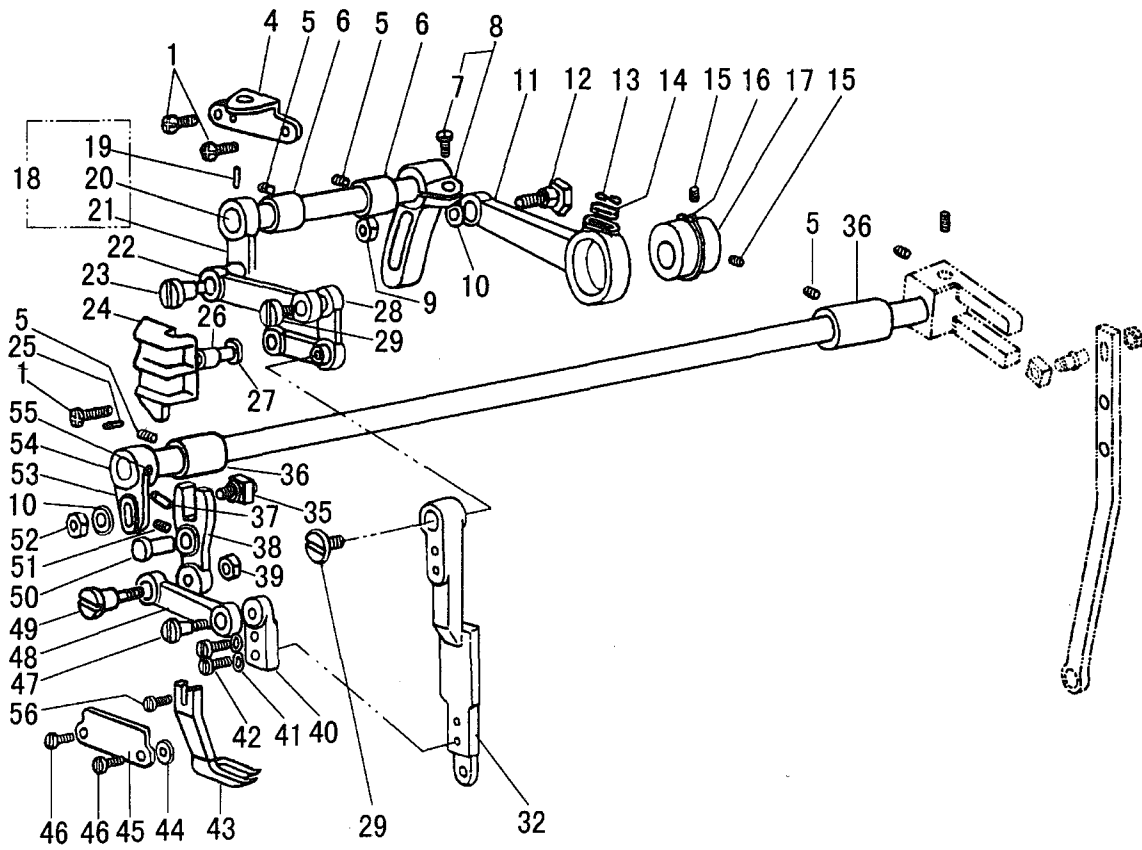
C. 针距调节部件 STITCH REGULATOR MECHANISM

| 序号 Fig. No. | 图号 Part No. | 英文名称 English Description | 中文名称 Chinese Description | 数量 Pcs. | 备注 Remarks |
|----------------|----------------|---------------------------------------|-----------------------------|------------|------------------|
| C01 | TA104F0651 | Hinge pin | 牙叉铰链轴 | 1 | |
| C02 | TA113F0684 | Screw | 倒缝操纵杆螺钉 | 4 | SM15/64(28)×8.5 |
| C03 | T2006C0023 | Feed connecting link | 针距连杆 | 1 | |
| C04 | T2006C0024 | Hinge pin for feed connecting link | 针距连杆铰链轴 | 1 | |
| C05 | T2006C0661 | Hinge pin for feed regulator | 针距调节摆杆铰链轴 | 1 | |
| C06 | T2006C0662 | Feed regulator | 针距调节摆杆 | 1 | |
| C07 | TA110D0672 | Set screw | 主动轮螺钉 | 1 | SM15/64(28)×12 |
| C08 | TA720F0681 | Stitch length regulator screw | 针距调节螺杆 | 1 | |
| C09 | TA100F2090 | Presser spring | 止动销弹簧 | 1 | |
| C10 | TA100F2080 | Stopper pin for stitch length | 止动销 | 1 | |
| C11 | TA109F0674 | O-ring | 针距调节螺杆O型圈 | 1 | |
| C12 | TK806D8001 | Stitch length regulator dial | 针距标盘 | 1 | |
| C13 | TA109F0673 | Screw | 针距标盘螺钉 | 1 | SM3/16(28)×8 |
| C14 | TA104F0654 | Screw | 倒缝操纵杆螺钉 | 2 | SM15/64(28)×10 |
| C15 | TA113F0683 | Screw | 倒缝操纵杆吊紧螺钉 | 1 | SM3/16(28)×6.5 |
| C16 | TK807D8001 | Reverse sewing lever | 倒缝操纵杆 | 1 | |
| C17 | TA100F2110 | Spring washer | 倒缝操纵杆垫圈 | 1 | |
| C18 | T2005F0065 | Reverse stitch lever shaft | 倒缝操纵杆短轴 | 1 | |
| C19 | TA100F2130 | Screw | 倒缝操纵杆曲柄螺钉 | 1 | SM15/64(28)×14.5 |
| C20 | T2004F0067 | Stitch length regulator assy | 倒缝操纵杆曲柄组件 | 1 | |
| C21 | T2004F0671 | Spring for feed crank | 倒缝操纵曲柄弹簧 | 1 | |
| C22 | TK815D8001 | Guide pin | 曲柄连接轴 | 1 | |
| C23 | T2000I2080 | Screw | 压脚限位螺钉 | 1 | SM11/64(40)×8.5 |
| C24 | T2009B0069 | Bushing for feed rock shaft | 送布轴轴套 | 1 | |
| C25 | TA100B2110 | Screw | 三眼线勾螺钉 | 2 | SM11/64(40)×5.5 |
| C26 | TA108G0661 | Collar | 送布轴紧圈 | 2 | |
| C27 | TA105D0662 | Screw | 上轴紧圈螺钉 | 4 | SM1/4(40)×4 |
| C28 | T2004L0653 | Feed rock shaft crank | 牙架曲柄 | 1 | |
| C29 | TA304G0656 | Screw | 牙架曲柄螺钉 | 2 | SM3/16(28)×15 |
| C30 | TA100B2110 | Screw | 三眼线勾螺钉 | 3 | SM11/64(40)×5.5 |
| C31 | T2012N0652 | Screw | 压脚摆动曲柄(右)螺钉 | 1 | SM1/4(24)×16 |
| C32 | TA100G2070 | Pin for feed lifting rock shaft crank | 送布轴曲柄铰链轴 | 2 | |
| C33 | T2012N0681 | Feed lifting & rock shaft crank | 送布轴曲柄 | 1 | |
| C34 | TK811D8001 | Feed rock shaft | 送布轴 | 1 | |
| C35 | T2009B0066 | Feed rock shaft bushing | 压脚摆动轴轴套 | 1 | |
| C36 | TK830D8001 | Hinge pin for feed regulator | 牙架轴 | 1 | |
| C37 | T007013050 | E-type stop ring | 开口挡圈 | 1 | |
| C38 | TK827D8001 | Feed bar | 牙架 | 1 | |
| C39 | TK828D7101 | Set pin | 轴位螺钉组件 | 2 | |
| C40 | TK812D8001 | Feed dog | 送布牙 | 1 | |
| C41 | T3204D6510 | Screw | 圆柱头螺钉 | 2 | SM1/8(44)×3.5 |
| C42 | TK834D8001 | Feed lifting rock shaft crank (left) | 抬牙轴轴套(左) | 1 | |
| C43 | T3230K0751 | Screw | 紧定螺钉 | 1 | SM11/64(40)×10 |

C. 针距调节部件 STITCH REGULATOR MECHANISM

| 序号 Fig. No. | 图号 Part No. | 英文名称 English Description | 中文名称 Chinese Description | 数量 Pcs. | 备注 Remarks |
|----------------|----------------|--|-----------------------------|------------|----------------|
| C44 | TK824D8001 | Bushing (left) | 拾牙曲柄 (左) | 1 | |
| C45 | TA111G0683 | Screw | 拾牙曲柄 (左) 螺钉 | 2 | SM11/64(40)×12 |
| C46 | TK820D8001 | Connecting tine | 拾牙曲柄 (右) 连杆 | 2 | |
| C47 | TK822D8001 | Set pin | 轴位螺钉 | 2 | SM15/64(28)×8 |
| C48 | TK819D8001 | Feed lifting rock shaft crank (center) | 拾牙曲柄 (右) | 1 | |
| C49 | TK832D8001 | Bushing (right) | 拾牙轴轴套 (中) | 1 | |
| C50 | TK813D8001 | Feed lifting rock shaft | 拾牙轴 | 1 | |
| C51 | T007009110 | C-type stop ring | 轴用弹性挡圈 | 1 | A型 |
| C52 | TK817D8001 | Feed lifting rock shaft crank (right) | 连接曲柄 (大) | 1 | |
| C53 | TA7311C606 | Screw | 送布曲柄 (右) 螺钉 | 2 | SM11/64(40)×15 |

D. 压脚摆动部件 PRESSER LIFTING、FEEDING MECHANISM



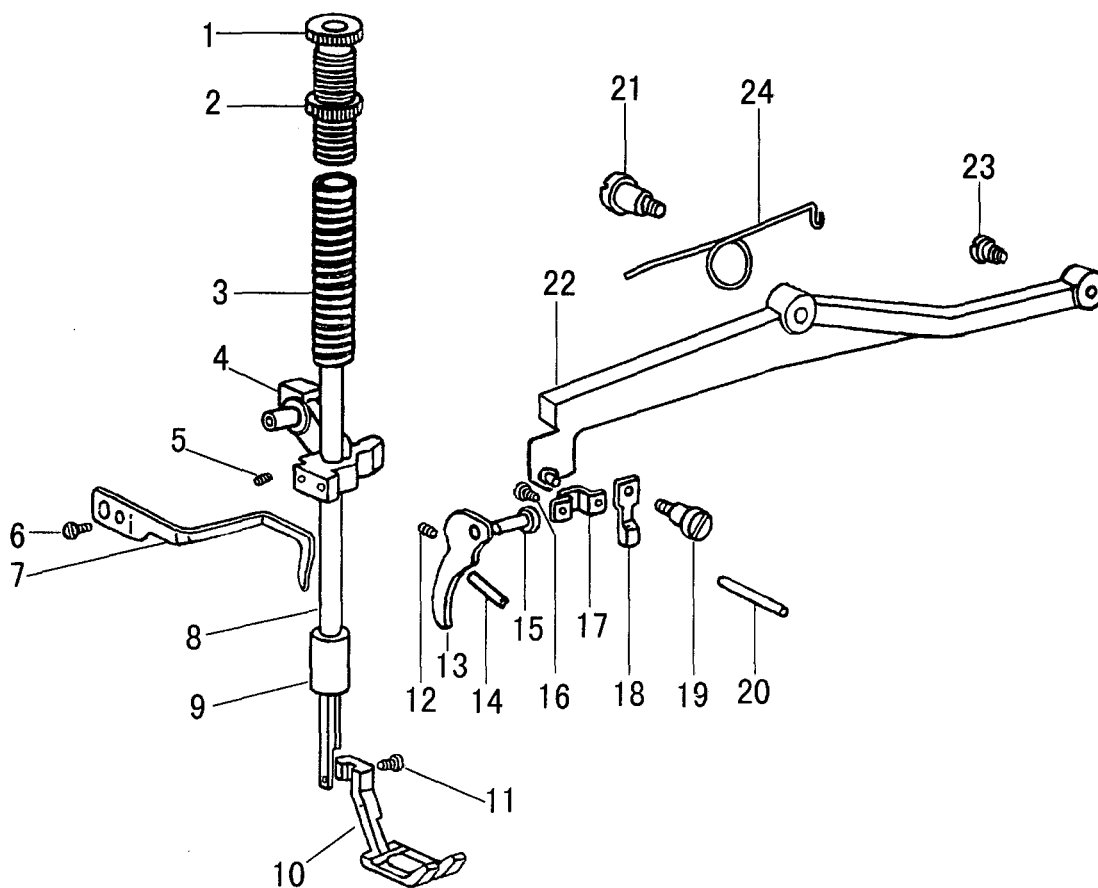
D. 压脚摆动部件 PRESSER LIFTING、FEEDING MECHANISM

| 序号 Fig. No. | 图号 Part No. | 英文名称 English Description | 中文名称 Chinese Description | 数量 Pcs. | 备注 Remarks |
|----------------|----------------|--|-----------------------------|------------|----------------|
| D01 | TA300B2160 | Screw | 挑线杆防护罩螺钉 | 4 | SM11/64(40)×8 |
| D04 | T2000J2060 | Thread guide | 提升压脚弹簧架 | 1 | |
| D05 | TA100B2110 | Screw | 压脚提升轴轴套螺钉 | 4 | SM11/64(40)×5 |
| D06 | T2009B0068 | Feed lifting rock shaft bushing | 压脚提升轴轴套 | 2 | |
| D07 | T2012N0652 | Screw | 压脚摆动曲柄(右)螺钉 | 1 | SM1/4(24)×16 |
| D08 | T2012J0066 | Feed lifting rock shaft crank (right) assy | 偏心连杆调节曲柄 | 1 | |
| D09 | T003002060 | Nut | 偏心连杆曲柄螺母 | 1 | |
| D10 | T2013J0065 | Washer | 偏心轮连杆垫圈 | 2 | |
| D11 | T2014J0066 | Feed connecting crank rod | 偏心轮连杆 | 1 | |
| D12 | T2000J2100 | Hinged screw | 偏心连杆螺钉 | 1 | SM6×24 |
| D13 | T20111C106 | Special spring for felt | 偏心连杆毛毡夹 | 1 | |
| D14 | T2014J0068 | Felt | 偏心轮连杆羊毛毡 | 1 | |
| D15 | TA307C0662 | Screw | 挑线曲柄定位螺钉 | 2 | SM1/4(40)×6 |
| D16 | TA112D3012 | C-type stop ring | 抬牙连杆挡圈 | 1 | |
| D17 | T2014J0652 | Eccentric wheel | 偏心轮 | 1 | |
| D18 | TK804E7101 | Feed lifting rock shaft complete | 压脚提升轴组件 | 1 | |
| D19 | T602040200 | Pin | 圆锥销 | 1 | |
| D20 | T2011J0066 | Feed lifting rock shaft | 压脚提升轴 | 1 | |
| D21 | TM008F8001 | Feed lifting rock shaft crank | 偏心连杆调节曲柄 | 1 | |
| D22 | T2100I2130 | Feed lifting rock shaft link | 压脚送料曲柄连杆 | 1 | |
| D23 | T2008N0065 | Hinged screw | 压脚送料变动连接螺钉 | 1 | SM1/4(40)×12 |
| D24 | T2000J2020 | Bell crank guide bracket | 提升压脚导位板 | 1 | |
| D25 | T609030080 | Spring pin | 弹性圆柱销 | 2 | |
| D26 | T2000J2030 | Bell crank guide bracket block | 提升压脚簧导柱轴滚柱 | 1 | |
| D27 | T2004J0655 | Guide pin | 送料曲柄导柱轴 | 1 | |
| D28 | T2004J0651 | Bell crank | 压脚送料曲柄 | 1 | |
| D29 | T2004J0653 | Screw | 压脚送料曲柄螺钉 | 2 | SM3/16(28)×10 |
| D32 | T2004J0654 | Walking foot guide link | 压脚连杆 | 1 | |
| D35 | T2013N0065 | Feed connecting slick block complete | 提升压脚变动曲柄轴组件 | 1 | |
| D36 | T2009B0066 | Feed driving shaft bushing | 压脚摆动轴轴套 | 2 | |
| D37 | T2009B0742 | Felt | 上轴轴套(左)长羊毛毡 | 1 | |
| D38 | T2013N0069 | Feed connecting lever | 提升压脚变动曲柄 | 1 | |
| D39 | T2008N0066 | Nut | 压脚送料变动连接螺母 | 1 | |
| D40 | T2004J0661 | Feed arm | 摆动连杆座 | 1 | |
| D41 | TA100I2050 | Spring washer | 油泵调节板螺钉弹簧垫圈 | 2 | |
| D42 | T2004J0067 | Screw | 摆动连杆座螺钉 | 2 | SM9/64(40)×7 |
| D43 | TK813E8001 | Walking foot (outside) | 外压脚 | 1 | |
| D44 | T2000N0040 | Washer | 压脚连杆压板垫块 | 2 | |
| D45 | T2000N0030 | Walking foot guide bracket | 提升压脚连杆压板 | 1 | |
| D46 | TA111G0683 | Screw | 抬牙轴曲柄(左)螺钉 | 1 | SM11/64(40)×12 |
| D47 | T2004J0662 | Hinged screw | 压脚送料曲柄连杆螺钉 | 1 | SM1/4(40)×12 |
| D48 | T2013N0070 | Walking foot connecting link | 提升压脚变动曲柄连杆 | 1 | |
| D49 | T2004J0662 | Taper screw | 压脚送料曲柄连杆螺钉 | 1 | SM1/4(40)×25 |

D. 压脚摆动部件 PRESSER LIFTING、FEEDING MECHANISM

| 序号 Fig.No. | 图号 Part No. | 英文名称 English Description | 中文名称 Chinese Description | 数量 Pcs. | 备注 Remarks |
|---------------|----------------|-----------------------------|-----------------------------|------------|---------------|
| D50 | T2013N0066 | Hinged shaft | 提升压脚变动曲柄导柱 | 1 | |
| D51 | TA3411D308 | Screw | 送布凸轮螺钉 | 1 | SM15/64(28)×7 |
| D52 | T2013N0067 | Nut | 压脚曲柄连接螺母 | 1 | |
| D53 | T2009N0065 | Presser swing crank (left) | 压脚摆动曲柄(左) | 1 | |
| D54 | T2009N0066 | Feed driving shaft complete | 压脚摆动轴 | 1 | |
| D55 | T602040240 | Pin | 压脚摆动曲柄(左)锥销 | 1 | 4×24 |

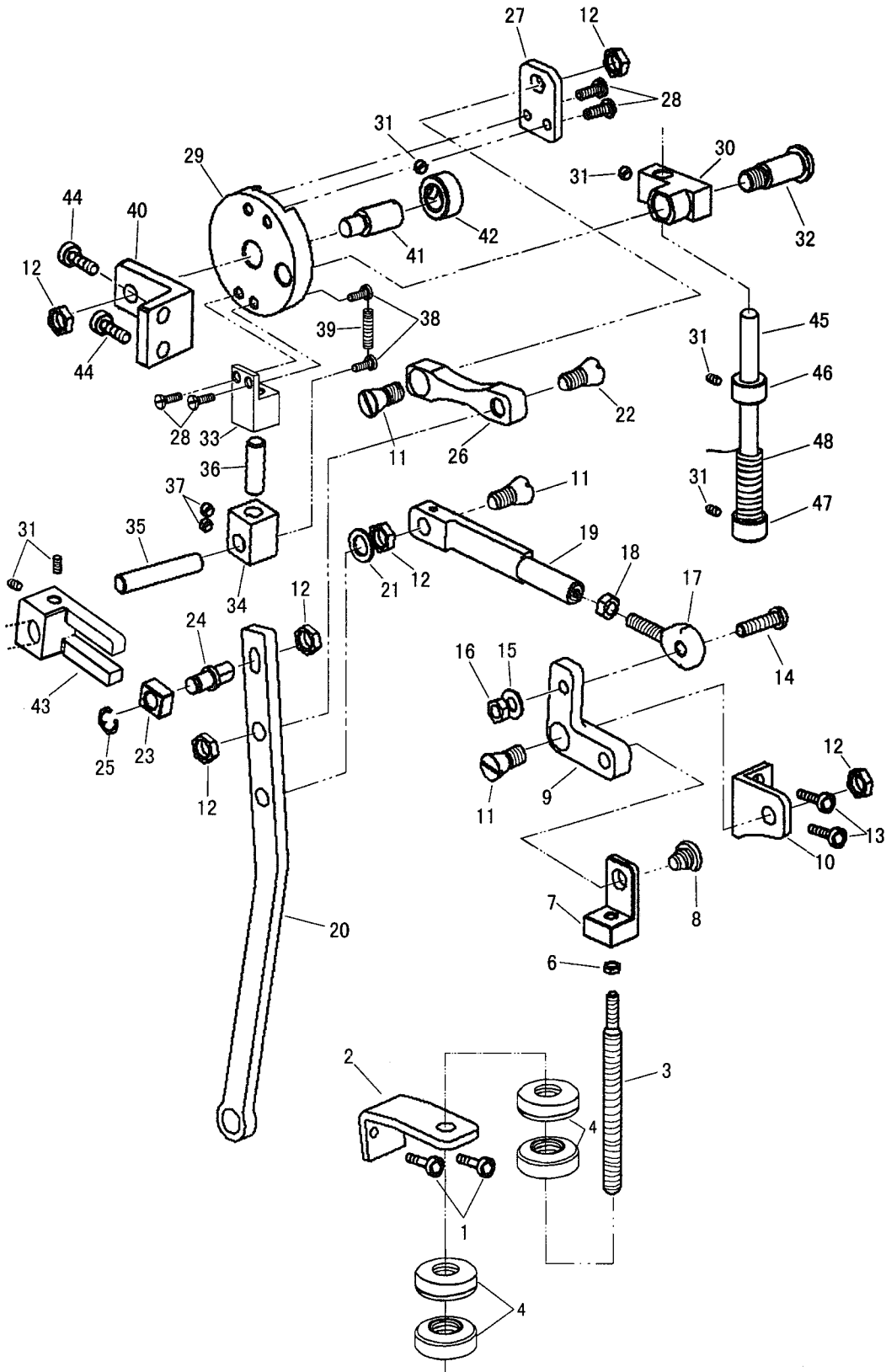
E. 压脚提升部件 PRESSER FOOT MECHANISM



E. 压脚提升部件 PRESSER FOOT MECHANISM

| 序号 Fig. No. | 图号 Part No. | 英文名称 English Description | 中文名称 Chinese Description | 数量 Pcs. | 备注 Remarks |
|----------------|----------------|-----------------------------|-----------------------------|------------|-----------------|
| E01 | T2005I0065 | Screw | 调压螺钉 | 1 | |
| E02 | TA117H0692 | Nut | 调压螺钉锁紧螺母 | 1 | |
| E03 | TK806F8001 | Presser bar spring | 压紧杆簧 | 1 | |
| E04 | T2004J0656 | Presser bar holder | 压杆导架 | 1 | |
| E05 | TA3411D308 | Screw | 送布凸轮螺钉 | 1 | SM15/64(28)×7 |
| E06 | TA700F2100 | Screw | 线勾固定螺钉 | 1 | SM11/64(40)×7 |
| E07 | TA300H2120 | Thread guide | 大线勾 | 1 | |
| E08 | T2000I2010 | Presser bar | 压紧杆 | 1 | |
| E09 | TA300H2090 | Presser bar | 压紧杆轴套 | 1 | |
| E10 | TK805F8001 | Presser foot (inside) | 内压脚 | 1 | |
| E11 | T2000I2050 | Screw | 压脚螺钉 | 1 | SM9/64(40)×8 |
| E12 | T2000I2080 | Screw | 压脚限位螺钉 | 1 | SM11/64(40)×8.5 |
| E13 | T2000I2060 | Presser foot lifting | 压脚扳手 | 1 | |
| E14 | T609030180 | Spring pin | 弹性圆柱销 | 1 | |
| E15 | T2000I2070 | Hinged pin | 压脚扳手销 | 1 | |
| E16 | TA300B2160 | Screw | 挑线杆防护罩螺钉 | 2 | SM11/64(40)×8 |
| E17 | T2000I2100 | Guide plate | 松线凸轮导轨 | 1 | |
| E18 | T2015I0066 | Upper thread releasing cam | 松线凸轮 | 1 | |
| E19 | T2015I0065 | Hinged screw | 松线凸轮螺钉 | 1 | SM3/16(28)×6.2 |
| E20 | T2000I2090 | Releasable pin | 松线钉 | 1 | SM15/64(24)×30 |
| E21 | T2000I2130 | Hinged screw | 抬压杠杆螺钉 | 1 | |
| E22 | T2015I0067 | Lifting lever | 抬压杠杆 | 1 | |
| E23 | T2000I2140 | Hinged screw | 杠杆拉杆连接座螺钉 | 1 | SM15/64(28)×10 |
| E24 | TK804F8001 | Spring | 复位簧 | 1 | |

F. 差动部件 DIFFERENTIAL MECHANISM



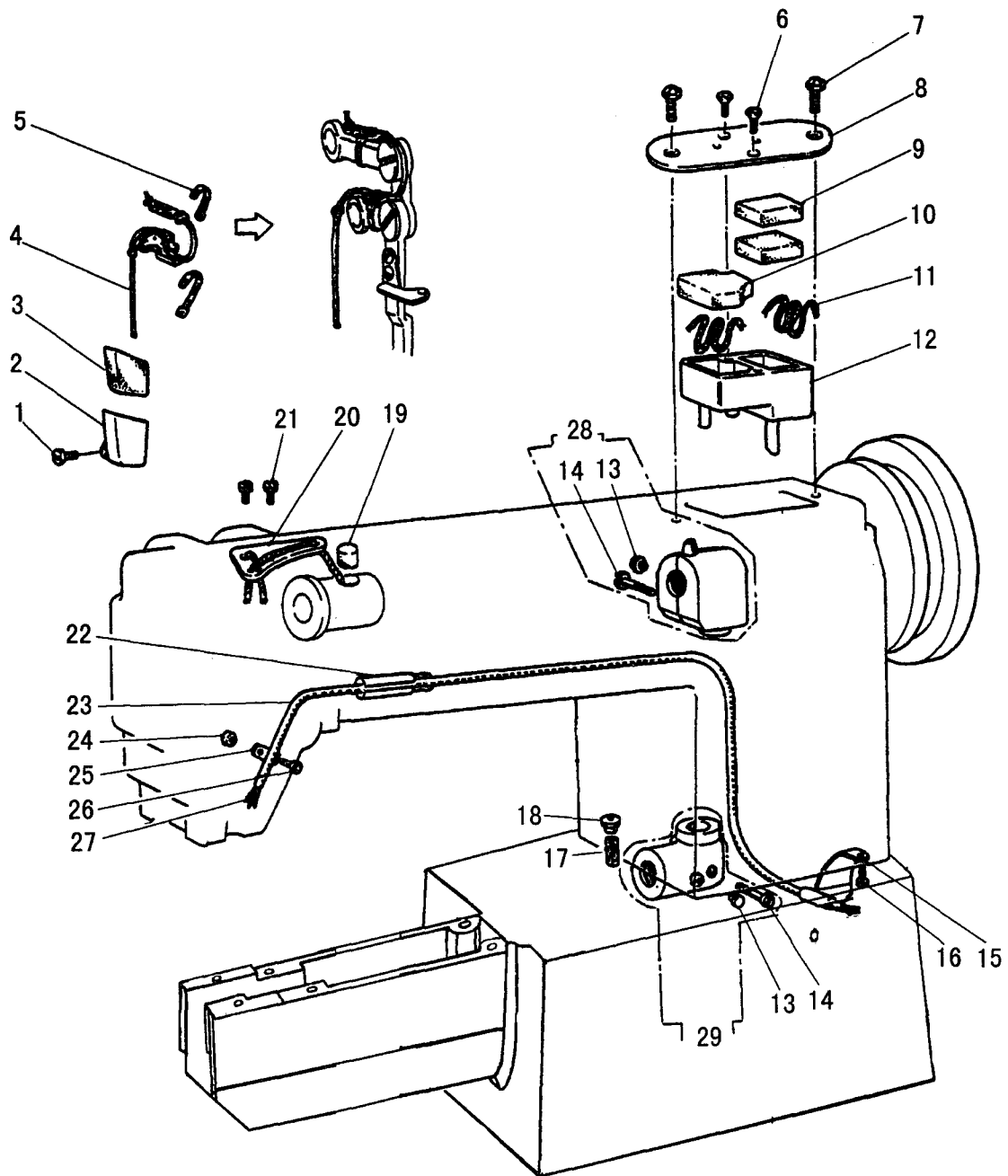
F. 差动部件 DIFFERENTIAL MECHANISM

| 序号 Fig. No. | 图号 Part No. | 英文名称 English Description | 中文名称 Chinese Description | 数量 Pcs. | 备注 Remarks |
|----------------|----------------|--|-----------------------------|------------|-----------------|
| F01 | T2000I2050 | Screw | 压脚螺钉 | 2 | SM9/64(40)×10 |
| F02 | TK812H8001 | Upper feed regulator (A) supporting block | 安装导向架 | 1 | |
| F03 | TK814H8001 | Lifting rod (A) | 导向杆 | 1 | |
| F04 | TK816H8001 | Collar | 紧圈 | 4 | |
| F06 | T003002060 | Nut | 六角螺母 | 1 | SM11/64(40) |
| F07 | TK817H8001 | Joint | 变向块 | 1 | |
| F08 | TK868H8001 | Screw | 轴位螺钉 | 1 | SM15/64(28) |
| F09 | TK819H8001 | Upper feed regulator (A) | 连杆 | 1 | |
| F10 | TK820H8001 | Upper feed regulator (B) settled block | 连杆固定座 | 1 | |
| F11 | TK821H8001 | Upper screw | 螺钉 | 3 | SM9/32(28)×10 |
| F12 | T2010J0066 | Upper nut | 提升压脚调节螺母 | 6 | SM9/32(28) |
| F13 | T415060120 | Upper screw | 圆柱头内六角螺钉 | 2 | |
| F14 | T408060200 | Ball screw | 十字槽圆柱头螺钉 | 1 | |
| F15 | T005005060 | Upper washer | 平垫圈 C级 | 1 | |
| F16 | T003001060 | Upper nut | 螺母 | 1 | |
| F17 | TE608I8001 | Ball joint | 球型连杆 | 1 | |
| F18 | T003001060 | Ball nut | 螺母 | 1 | |
| F19 | TK825H8001 | Upper feed regulator (A) connecting link | 调节连杆 | 1 | |
| F20 | TK827H8001 | Upper feed driving tock shaft crank connection | 差动连杆 | 1 | |
| F21 | T7335C8001 | Upper washer | 拉板定位销垫圈 | 1 | |
| F22 | TK821H8001 | Screw | 螺钉 | 1 | SM9/32(28)×14 |
| F23 | T2013N0651 | Slick block | 滑块 | 1 | |
| F24 | TK830H8001 | Pin | 轴位螺钉 | 1 | SM9/32(28) |
| F25 | T007013050 | C-type stop ring | 开口挡圈 | 1 | |
| F26 | TK832H8001 | Upper feed regulator (B) connecting link | 小连杆 | 1 | |
| F27 | TK833H8001 | Upper feed regulator bracket (A) | 小连杆连接板 | 1 | |
| F28 | T2000I2050 | Upper screw | 压脚螺钉 | 4 | SM9/64(40)×8 |
| F29 | TK837H8001 | Upper feed regulator (B) | 转盘 | 1 | |
| F30 | TK839H8001 | Upper feed regulator (B) connection | 导向块 | 1 | |
| F31 | T431060050 | Lifting rod (B) screw | 内六角凹端紧定螺钉 | 6 | |
| F32 | T7311F8001 | Upper screw | 膝控提升杠杆螺钉 | 1 | M8×1.25 |
| F33 | TK840H8001 | Upper feed regulator bracket (B) | 固定导向块 | 1 | |
| F34 | TK842H8001 | Indicator bearing bracket connection | 定位块 | 1 | |
| F35 | TK843H8001 | Indicator bearing bracket connection pin (A) | 长轴 | 1 | |
| F36 | TK844H8001 | Indicator bearing bracket connection pin (B) | 短轴 | 1 | |
| F37 | T6039G8001 | Indicator screw | 提升轴曲柄连杆螺钉 | 2 | SM11/64(40)×3.8 |
| F38 | T7205F8001 | Upper screw | 外压脚螺钉 | 2 | SM9/64(40)×14 |
| F39 | T4986K8001 | Spring | 松线软轴复位弹簧 | 1 | |
| F40 | TK846H8001 | Lifting rod (A) guide plate | 固定架 | 1 | |
| F41 | TK848H8001 | Upper feed regulator stud | 转轴 | 1 | SM9/32(28) |
| F42 | TK850H8001 | Collar | 紧圈 | 1 | |
| F43 | TK852H8001 | Upper feed driving fork | 曲柄 | 1 | |

F. 差动部件 DIFFERENTIAL MECHANISM

| 序号 Fig. No. | 图号 Part No. | 英文名称 English Description | 中文名称 Chinese Description | 数量 Pcs. | 备注 Remarks |
|----------------|----------------|-------------------------------|-----------------------------|------------|---------------|
| F44 | T415060120 | Lifting screw | 圆柱头内六角螺钉 | 2 | |
| F45 | TK854H8001 | Lifting rod (C) | 导向杆 | 1 | |
| F46 | TK856H8001 | Lifting rod (C) thrust collar | 紧圈 (1) | 1 | |
| F47 | TK858H8001 | Lifting rod (C) thrust collar | 紧圈 (2) | 1 | |
| F48 | TK859H8001 | Lifting rod (B) spring | 压簧 | 1 | |

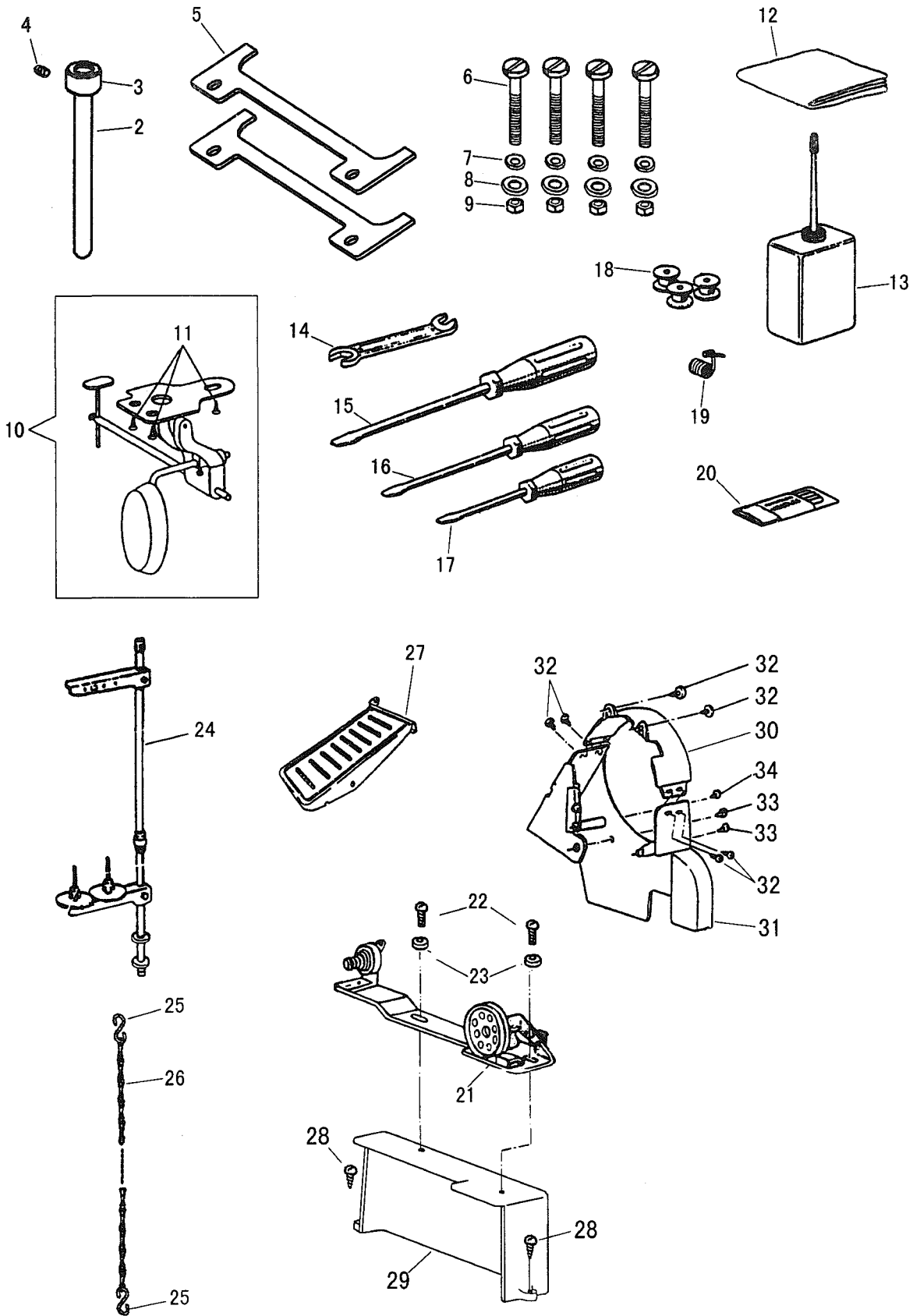
G. 供油部件 OIL LUBRICATION MECHANISM



G. 供油部件 OIL LUBRICATION MECHANISM

| 序号 Fig. No. | 图号 Part No. | 英文名称 English Description | 中文名称 Chinese Description | 数量 Pcs. | 备注 Remarks |
|----------------|----------------|---------------------------------|-----------------------------|------------|----------------|
| G01 | TA106B0676 | Screw | 面板线勾螺钉 | 1 | SM9/64(40)×6 |
| G02 | T2003M0065 | Oil reservoir | 油线油盒 | 1 | |
| G03 | T2003M0066 | Felt | 油线油盒羊毛毡 | 1 | |
| G04 | T2003J0067 | Oil pipe & wick complete | 摆动连杆润滑油线组件 | 1 | |
| G05 | TA300I2040 | Band SKB-1M | 连杆过油管尼龙夹 | 2 | |
| G06 | TA06030080 | Screw | 机头左油盒螺钉 | 2 | |
| G07 | TA300B2170 | Screw | 后盖板螺钉组件 | 7 | |
| G08 | T2020M0065 | Cap for oiler (right) | 机壳左盖 | 1 | |
| G09 | T2020M0067 | Felt | 机头左油盒羊毛毡 | 2 | |
| G10 | T2020M0069 | Felt | 机头左油盒小羊毛毡 | 1 | |
| G11 | T2003J0671 | Oil wick | 摆动连杆润滑油绳 | 1 | |
| G12 | T2020M0066 | Oil reservoir (right) | 机头左油盒 | 1 | |
| G13 | TA300B2110 | Rubber plug | 橡皮塞(D5.7) | 2 | |
| G14 | T409050140 | Screw | 十字槽盘头螺钉 | 2 | |
| G15 | T2000M0130 | Oil pipe holder | 回油管油线夹 | 1 | |
| G16 | T3410C301L | Screw | 圆柱头螺钉 | 1 | SM9/64(40)×4.5 |
| G17 | T2008M0066 | Felt | 油箱内羊毛毡 | 1 | |
| G18 | T2000M0090 | Cap for oiler | 油杯 | 3 | |
| G19 | TA100C2100 | Felt | 针杆轴套(上)毡塞 | 2 | |
| G20 | T2000M0010 | Oil braid fitting plate | 油线固定板大组件 | 1 | |
| G21 | TA100H2150 | Screw | 面板线勾螺钉 | 2 | SM9/64(40)×11 |
| G22 | T2009B0070 | Oil pipe | 油管固定夹片 | 1 | |
| G23 | T2013M0065 | Oil pipe | 机头回油管 | 1 | |
| G24 | T2000M0120 | Nut | 回油管固定螺母 | 1 | |
| G25 | T2000M0110 | Pipe holder | 机头回油管固定夹 | 1 | |
| G26 | T2000I2200 | Screw | 膝控提升杠杆曲柄螺钉 | 1 | SM11/64(40)×8 |
| G27 | T2013M0066 | Oil wick | 机头回油管油线 | 3 | |
| G28 | T2000M0140 | Arm shaft bevel gear box comple | 伞齿轮上罩壳组件 | 1 | |
| G29 | T2000M0150 | Hook shaft bevel gear box compl | 伞齿轮下罩壳组件 | 1 | |

H. 附件部件 ACCESSORIES



H. 附件部件 ACCESSORIES

| 序号 Fig. No. | 图号 Part No. | 英文名称 English Description | 中文名称 Chinese Description | 数量 Pcs. | 备注 Remarks |
|----------------|----------------|-----------------------------|-----------------------------|------------|---------------|
| H01 | T609020120 | Spring pin | 弹性圆柱销 | 1 | |
| H02 | TK805I8001 | Mandrel | 顶杆 | 1 | |
| H03 | TK856H8001 | Collar | 紧圈(1) | 1 | |
| H04 | T431060050 | Screw | 内六角凹端紧定螺钉 | 1 | |
| H05 | TK806I8001 | Vibration preventing rubber | 防震垫 | 2 | |
| H06 | T411080650 | Screw | 十字槽沉头螺钉 | 4 | |
| H07 | T005005080 | Washer | 平垫圈 | 4 | |
| H08 | T005006080 | Washer | 大垫圈 | 4 | |
| H09 | T003001080 | Nut | 六角螺母 | 4 | |
| H10 | TE014M7101 | Knee lifter assy | 膝控提升组件 | 1 | |
| H11 | 55250 | Screw | 开槽沉头木螺钉 | 3 | |
| H12 | TA300J2190 | Vinyl cover | 机罩 | 1 | |
| H13 | T200400069 | Oil with oiler | 小油壶(1) | 1 | |
| H14 | TA300J2220 | Spanner | 双头扳手 | 1 | |
| H15 | TA300J2070 | Screw driver (large) | 螺钉起子(大) | 1 | |
| H16 | TA300J2200 | Screw driver (middle) | 螺钉起子(中) | 1 | |
| H17 | TA300J2210 | Screw driver (small) | 螺钉起子(小) | 1 | |
| H18 | TA100E2170 | Bobbin | 梭心 | 3 | |
| H19 | TA505B0672 | Thread take-up spring | 挑线簧 | 1 | |
| H20 | TA300J2310 | Needle | 机针袋组件 | 1 | |
| H21 | TA706S0067 | Bobbin winder assy | 绕线器组件 | 1 | |
| H22 | T401050100 | Screw | 开槽圆柱头螺钉 | 2 | |
| H23 | T005001040 | Washer | 垫圈 | 2 | |
| H24 | TA300J2370 | Thread stand assy | 线架组件 | 1 | |
| H25 | TA300J2370 | Pothook | 挂钩 | 2 | |
| H26 | TA300J2370 | Chain | 挂子链 | 1 | 1000 |
| H27 | TGJ09G7101 | Footplate | 小踏板 | 1 | |
| H28 | T801055250 | Screw | 木螺钉 | 2 | |
| H29 | TK811I8001 | Interleaver | 绕线器垫块 | 1 | |
| H30 | T200000330 | Belt cover assy | 皮带罩(上) | 1 | |
| H31 | T200000340 | Belt cover assy | 皮带罩(下) | 1 | |
| H32 | T200000360 | Screw | 皮带罩螺钉 | 6 | SM11/64(40)×7 |
| H33 | TA300J2280 | Screw | 皮带罩板螺钉 | 2 | SM15/64(28)×8 |
| H34 | TA300J2250 | Screw | 皮带罩板螺母螺钉 | 1 | M4×12.5 |

上海太成科技发展有限公司

SHANGHAI TAICHENG TECHNOLOGY DEVELOPMENT CO; LTD.

地址：上海市宜山路829号南四楼

ADD: Floor 4, South Building, No. 829, Yishan RD, Shanghai, China

电话：86-21-64468507、54263161 Tel: 86-21-64468507、54263161

86-21-54263162、54263163 86-21-54263162、54263163

传真：86-21-64468509 FAX: 86-21-64468509

http: www.taicheng-sh.com E-mail: taicheng@taicheng-sh.com

The description covered in this manual is subject to change for improvement of the commodity without notice

2005.12. Printed