

**LIST OF PARTS
FOR**

CONSEW

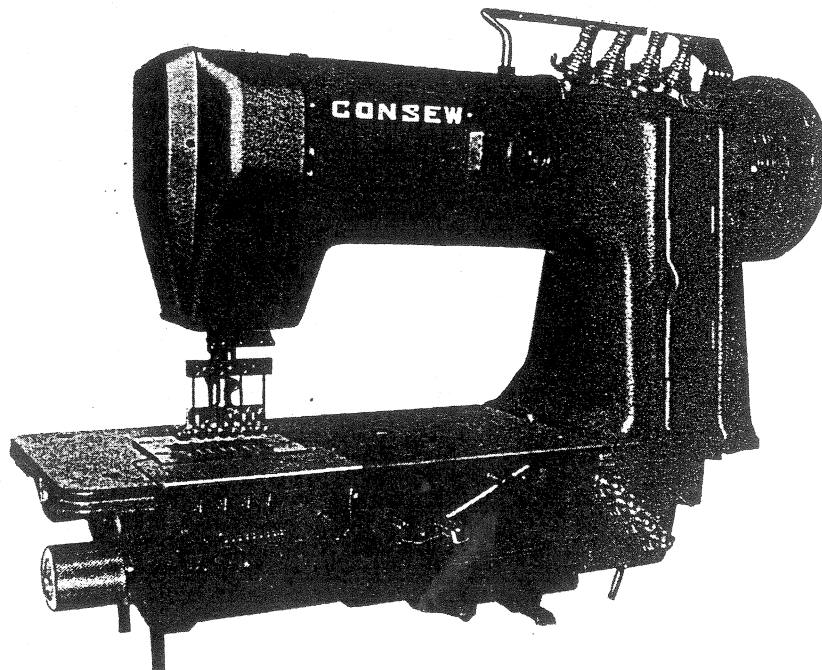
**MODEL
3300 SERIES**



CONSOLIDATED SEWING MACHINE CORP.

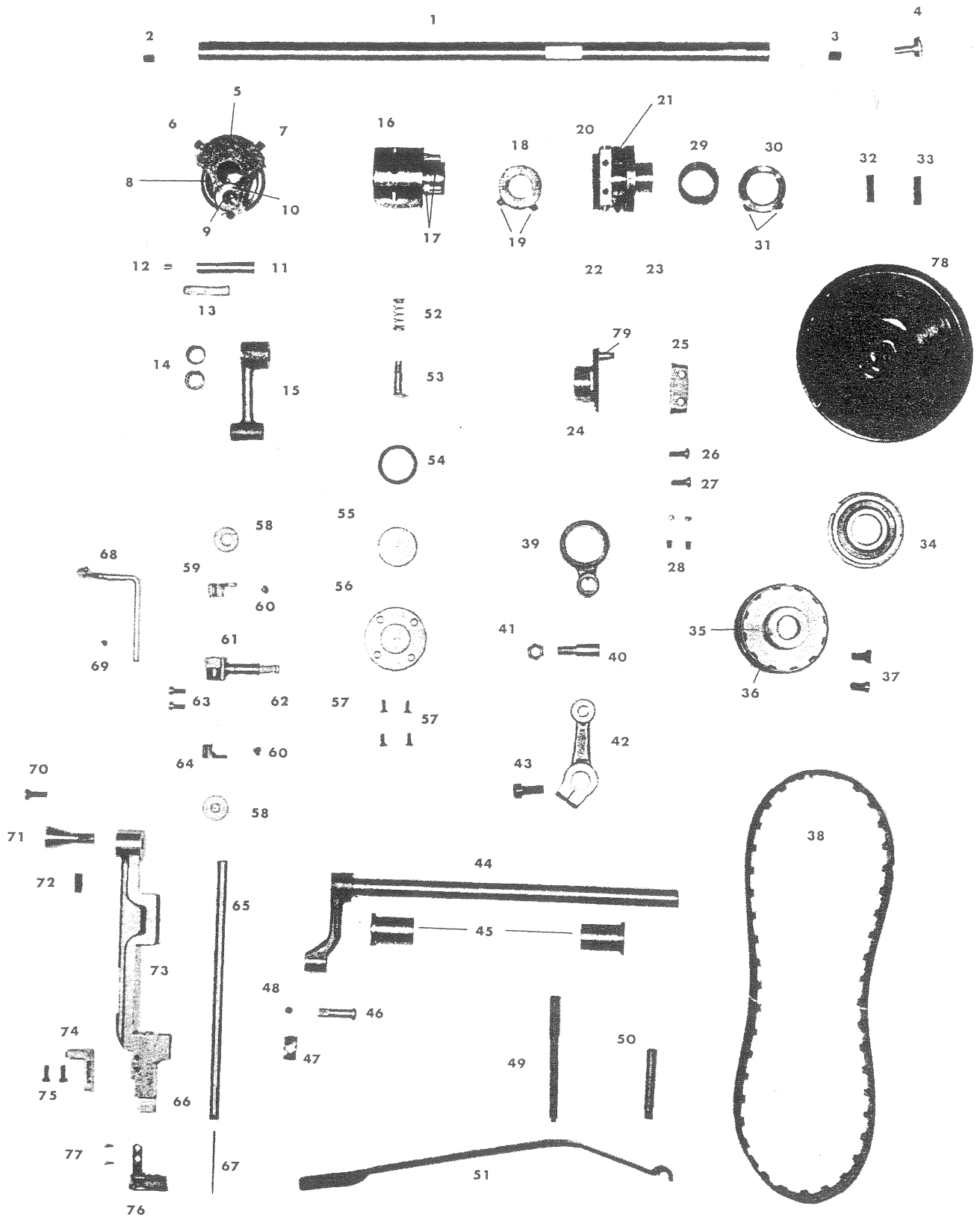
INDEX

	Page
Arm shaft, upper feed driving, needle bar.....	1
Lifting rock shaft, foot lifter.....	3
Needle thread tension.....	5
Bed plate, oiling.....	7
Bed shaft, feed driving.....	9
Looper, spreader.....	11
Oil tank, knee lifter.....	13
Accessories.....	15
Numeral list of parts.....	17



ARM SHAFT' UPPER FEED DRIVING, NEEDLE BAR group.

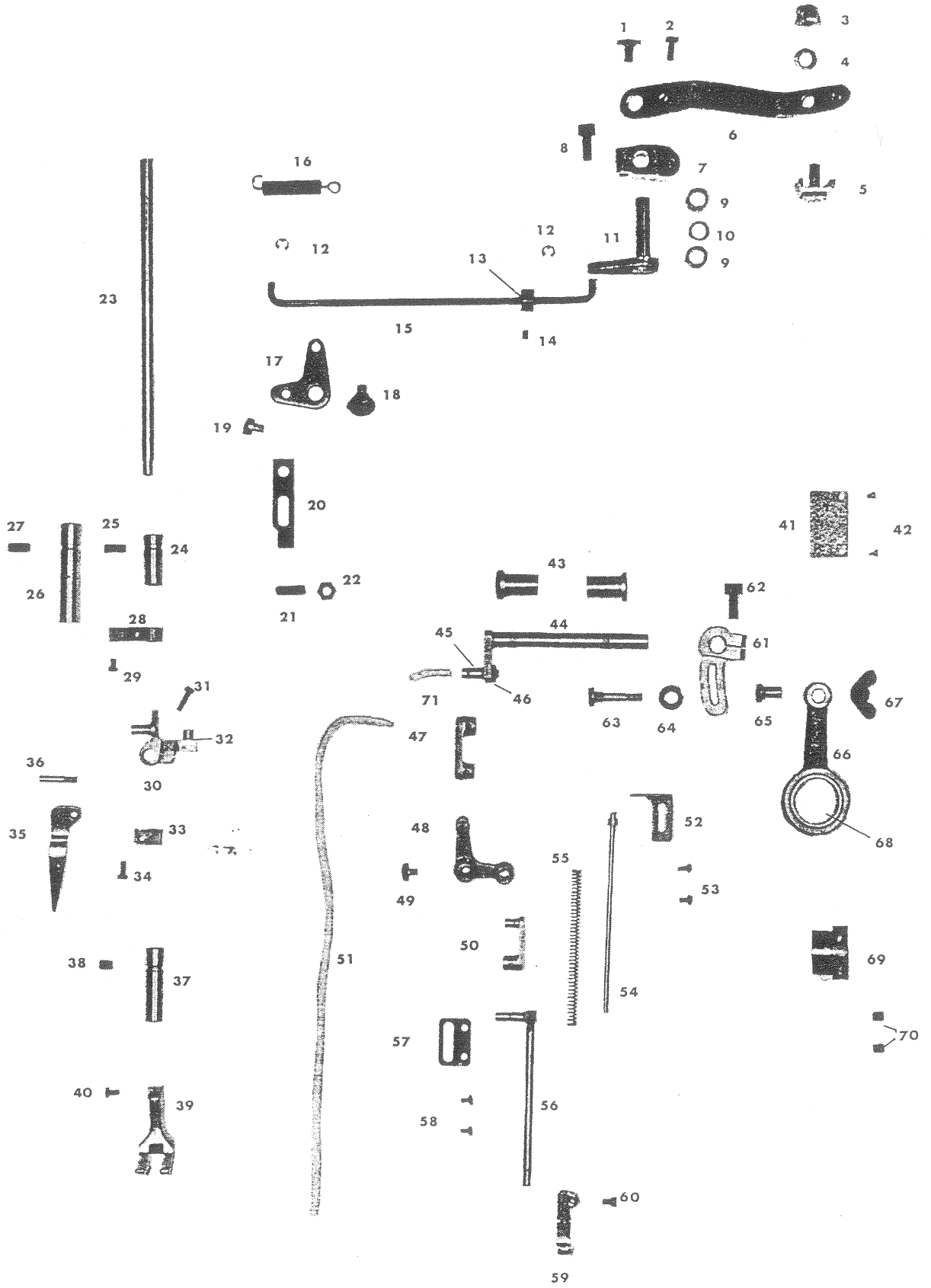
Fig. No.	Parts No.	Quantity	Name
1	20066	1	Arm shaft
2	20067	1	Arm shaft oil packing
3	6042	1	Arm shaft oil packing stop screw
4	6047	1	Balance wheel adjusting screw
5	20070	1	Needle bar crank
6	10522	1	Needle crank position set screw(B)
7	10521	1	Needle crank position screw(A)
8	20069	1	Arm shaft ball bearing (front)
9	10764	1	Set screw for #20106 (B)
10	10524	1	Set screw for #20106 (A)
11	20106	1	Needle bar connecting link stud
12	11068	1	Oil stop rubber packing
13	10726	2	Oiling felt for 20106
14	20105	2	Needle bar connecting link bearing
15	20104	1	Needle bar connecting link
16	20068	1	Arm shaft bushing (middle)
17	20074	2	Vinyl tube holder
18	20077	1	Upper feed driving eccentric stop collar
19	10581	2	Upper feed driving eccentric stop collar screw
20	20075	1	Flange for feed driving eccentric (upper & lower)
21	20076	1	Feed driving eccentric adjusting disc (upper)
22	11093	1	Set screw for #20075 (A)
23	11094	1	Set screw for #20075 (B)
24	11090	1	Feed driving eccentric (upper)
25	11095	1	Feed driving eccentric friction plate
26	11096	2	Set screw for #11095
27	11097	2	Set screw packing (brass)
28	2067	4	Set screw for #11095
29	11099	1	Feed driving eccentric adjusting disc spring
30	11100	1	Collar for #11099
31	10566	2	Set screw for #11100
32	10576	1	Balance wheel set pin (A)
33	10579	1	Balance wheel set pin (B)
34	11031	1	Arm shaft ball bearing (rear)
35	20078	1	Arm shaft connecting belt pulley
36	10574	2	Arm shaft connecting belt pulley spring flange
37	10612	2	Screw for #10574
38	20079	1	Arm shaft connecting belt
39	20093	1	Upper needle bar rock frame driving connection
40	20284	1	Upper needle bar rock frame driving connection hinge stud
41	8105	1	Set screw for #20284
42	20094	1	Needle bar rock frame rock shaft
43	10519	1	Screw for #20094
44	20091	1	Needle bar rock frame rock crank shaft
45	20092	2	Bushings for #20091
46	20096	1	Needle bar rock frame slide block stud
47	20095	1	Needle bar rock frame slide block
48	13085	1	Set screw for #20095
49	20143	1	Presser bar spring regulating screw
50	20142	1	Presser bar spring regulating pin
51	20141	1	Presser bar spring
52	12383	1	Spring for #20141
53	20164	1	Oil controlling screw
54	20162	1	Oil seal packing
55	20161	1	Oil level indicator
56	20163	1	Presser plate for #20161
57	11044	4	Set screw for #20163
58	20110	2	Needle bar rock frame felt
59	20111	1	Needle bar oiling felt holder (upper)
60	10597	1	Set screw for #20111 & #20112
61	20107	1	Needle bar connecting stud
62	10726	1	Oil felt for #20107 (#61)
63	10532	2	Needle bar connecting stud screw
64	20112	1	Needle bar oiling felt holder (lower)
65	* 20101 or 20500	1	Needle bar (#20101 for 301 & 321, #20500 for 302-304, 322-324)
66	10535	1	Needle set screw
67	20115	1	Needle (DV x 59 #22)
68	20108	1	Needle thread guide (on needle bar connecting stud)
69	8042	1	Set screw for #20108
70	6025	1	Screw for #20103
71	20103	1	Needle bar rock frame hinged stud
72	10525	1	Set screw for #20103
73	* 20102 or 21100	1	Needle bar rock frame (#20102 for 321-324, #21100 for 301-304)
74	20113	1	Needle bar rock frame position bracket
75	10532	2	Needle bar rock frame position bracket screw
76	20109	1	Needle bar rock frame thread guide
77	10685	2	Set screw for #20109
78	20080	1	Balance wheel (Small) { 20080 small 20081 large (casting) 20085 " (aluminum)
79	10684	1	Feed driving eccentric



LIFTING ROCK SHAFT, FOOT LIFTER group

Fig. No.	Parts No.	Quantity	Name
1	10577	1	Knee lifter lifting lever presser screw
2	6025	1	Knee lifter lifting lever set screw
3	20190	1	Cap nut for #20189
4	20191	1	Spring rock washer for #20189
5	20189	1	Wire rope fastening clasp
6	20175	1	Foot lifter lever
7	20176	1	Bracket for #20175
8	10754	1	Set screw for #20176
9	20179	2	Needle bearing for #20177
10	20180	1	Oil seal for #20177
11	20177	1	Foot lifter lever shaft
12	20182	2	Foot lifter lever rod retaining ring
13	20151	1	Collar for #20181
14	2067	1	Set screw for #20151
15	20181	1	Foot lifter lever rod
16	20184	1	Foot lifter lever spring
17	20144	1	Foot lifter bell crank
18	20146	1	Hinge screw for #20144
19	20149	1	Hinge screw for #20183
20	20183	1	Foot lifter lifting link
21	10571	1	Stop screw for #20183
22	10636	1	Nut for #10571
23	20121	1	Presser bar
24	10538	1	Presser bushing (upper)
25	10522	1	Presser bushing screw (upper)
26	10543	1	Presser bar position guide
27	10522	1	Presser bar position guide screw
28	10541	1	Presser bar position guide bracket
29	10532	1	Set screw for #10541
30	20122	1	Presser bar lifting bracket
31	10545	1	Set screw for #20122
32	20148	1	Lifting pin for #20183
33	10549	1	Presser bar spring bracket
34	10532	1	Presser bar pinch screw
35	20120	1	Presser bar lifter
36	10660	1	Hinge screw for #20120
37	10539	1	Presser bar bushing (lower)
38	10761	1	Set screw for #10539
39	* 20130	1	Lifting presser foot
40	10561	1	Lifting presser foot screw
41	† 20062	1	Arm side cover
42	† 8111	2	Set screw for arm side cover (#20062)
43	† 10514	2	Lifting rock shaft bushing
44	† 10515	1	Lifting rock shaft
45	† 15053	1	Lifting bell crank link screw stud
46	† 10517	1	Lifting bell crank link nut
47	† 20125	1	Lifting bell crank link
48	† 20123	1	Lifting bell crank
49	† 10559	1	Lifting bell crank set screw
50	† 20124	1	Vibrating presser bar connecting link
51	† 20133	1	Vibrating presser bar oil felt
52	† 20128	1	Vibrating presser bar extension stopper
53	† 10650	2	Set screw for #20128
54	† 20127	1	Vibrating presser bar extension
55	† 10554	1	Vibrating presser bar extension spring
56	† 20126	1	Vibrating presser bar
57	† 20132	1	Vibrating presser bar guide plate
58	† 10650	2	Set screw for #20132
59	† 20129	1	Vibrating presser foot
60	† 10662	1	Presser foot pinch screw
61	† 20136	1	Lifting eccentric connecting crank
62	† 10754	1	Set screw for #20136
63	† 10775	1	Lifting eccentric connection hinge screw
64	† 10703	1	Washer for #10775
65	† 10774	1	Lifting eccentric connection collar
66	† 20072	1	Lifting eccentric connection
67	† 10776	1	Lifting eccentric connection wing nut
68	† 20073	1	Bearing for #20072
69	† 20071	1	Lifting eccentric
70	† 10566	2	Screw for #20071
71	† 10728	1	Oil felt for lifting bell crank link screw stud

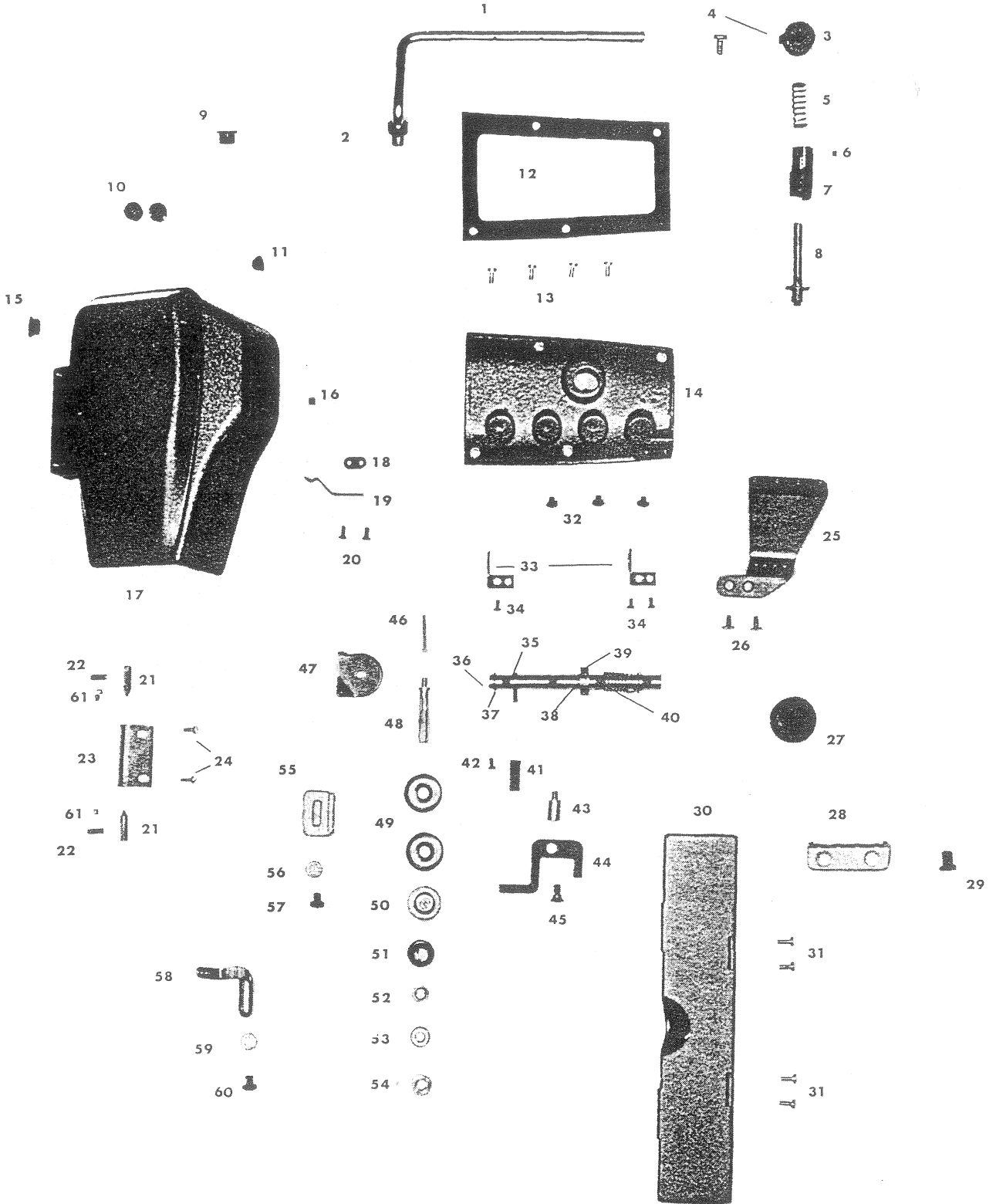
Remarks: Part marked * changes by the model.



NEEDLE THREAD TENSION group

Fig. No.	Parts No.	Quantity	Name
1	20050	1	Top arm thread guide
2	50154	1	Nut for #20050
3	20040	1	Needle bar rock frame regulating stud cap
4	8097	1	Set screw for #20040
5	20039	1	Needle bar rock frame regulating stud spring
6	8103	1	Set screw for #20038
7	20038	1	Needle bar rock frame regulating stud sleeve
8	20037	1	Needle bar rock frame regulating stud
9	20171	1	Rubber plug (B)
10	20138	2	Rubber plug
11	20172	1	Rubber plug (C)
12	20017	1	Arm top gasket
13	8040	4	Set screw for arm top
14	20016	1	Arm top cover
15	20171	1	Rubber plug (B)
16	15038	1	Face plate rubber
17	20004	1	Face plate
18	20008	1	Supporting plate for face plate spring
19	20007	1	Face plate spring
20	11044	2	Set screw for #20007 & #20008
21	20011	2	Face plate hinge pin screw
22	8101-10	2	Set screw for #20006
23	20005	1	Holder for face plate
24	8040	2	Set screw for #20005
25	20054	1	Looper thread guide (upper)
26	6031	2	Set screw for #20054
27	20170	1	Rubber plug (A)
28	20055	1	Looper thread guide (middle)
29	6031	2	Set screw for #20055
30	20056	1	Cover for thread guide
31	8040	4	Set screw for hinge of #20056
32	8064	3	Plug screw for spare screw hole of needle thread tension stud
33	20030	2	Bracket for #20026
34	8044	3	Set screw for #20030
35	20026	1	Tension release rod
36	4514	2	Retaining ring for #20026
37	20027	1	Tapered pin for #20026
38	4098	2	Set screw for #20036
39	20036	1	Collar for #20035
40	20035	1	Spring for #20026
41	20033	1	Tension release rod lever stopper
42	20034	1	Set screw for #20033
43	20032	1	Stud for 13323
44	20031	1	Tension release rod lever
45	13323	1	Hinge screw for #20031
46	* 20029	1	Needle thread tension releasing pin
47	* 20025	1	Needle thread tension thread guide
48	* 20018	1	Thread controller stud
49	* 20019	2	Thread disc
50	* 20020	1	Needle thread tension release disc
51	* 20024	1	Tension release spring (for thick thread)
52	* 20023	1	Washer for #20024 (#51)
53	* 20021	1	Tension thumb nut (A)
54	* 20022	1	Tension thumb nut (B)
55	20052	1	Needle thread guide (on side of arm) (2)
56	20053	1	Washer for #12446 screw
57	20048	1	Set screw for #20052
58	20051	1	Needle thread guide (on side of arm) (1)
59	20053	1	Washer for #12446 screw
60	20048	1	Set screw for #20051
61	11097	2	Liner for #20011

Remarks: Parts marked * increase in proportion to number of needle.

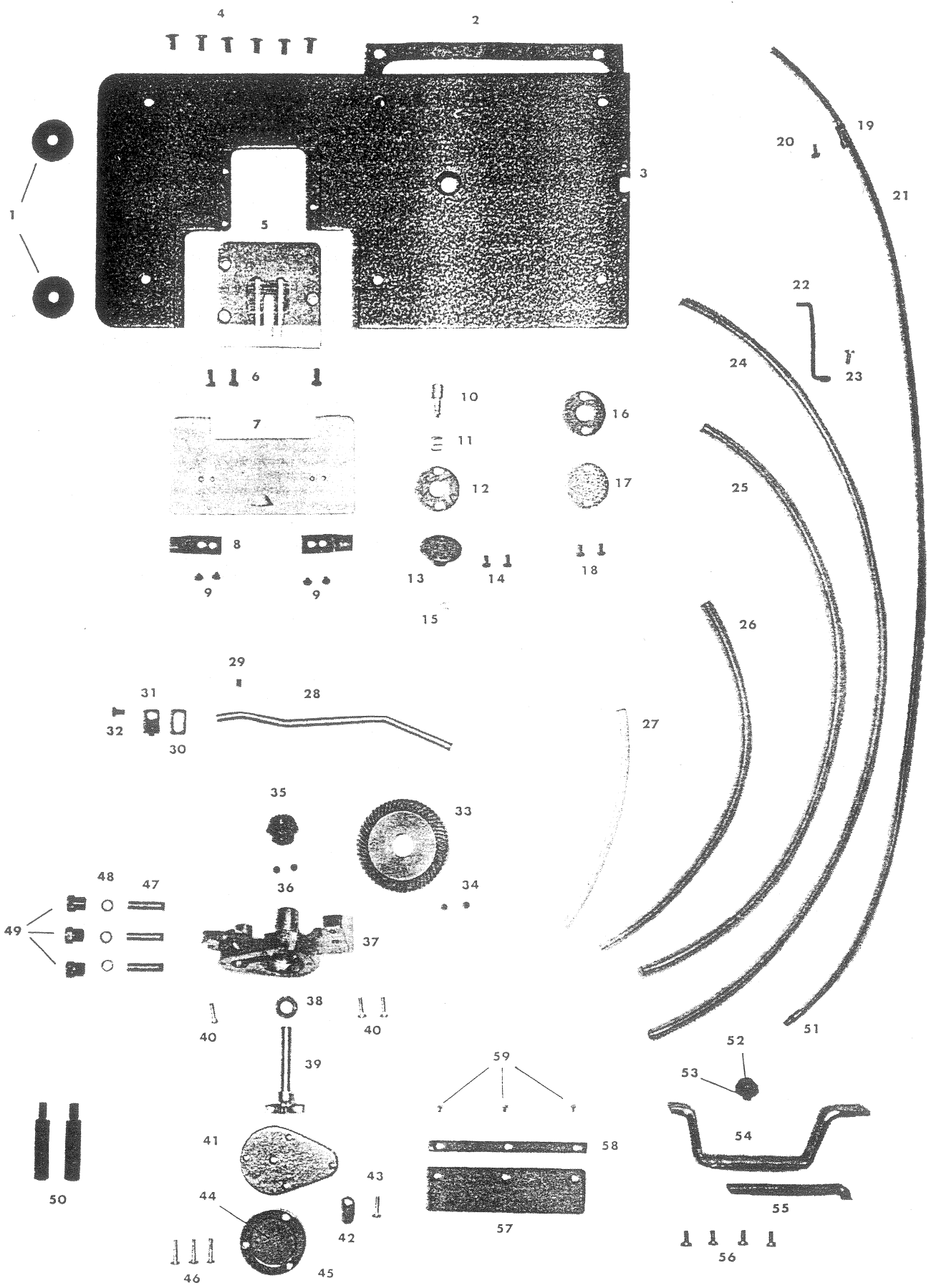


BED PLATE, OILING group

Fig. No.	Parts No.	Quantity	Name
1	20206	2	Packing for bed plate (B)
2	20205	1	Gasket for bed plate (A)
3	† 20204 or 20501	1	Bed plate (≠20204 is available up to 1 3/4" and ≠20501 is for gauges over 1 3/4" to 2")
4	12418	6	Set screw for bed plate
5	* 20275	1	Throat plate
6	20276	3	Set screw for #20275 (4 pcs. of #20276 are used for #20501)
7	† 20207 or 20502	1	Bed plate slide (≠20207 is available up to 1 3/4" and ≠20502 is for gauges over 1 3/4" to 2")
8	20209	2	Bed plate slide spring
9	10597	4	Set screw for #20209
10	20211	1	Feed regulating stud
11	20213	1	Feed regulating stud spring
12	20215	1	Packing for #20210
13	20210	1	Feed regulating stud socket
14	10561	2	Set screw for #20210
15	20212	1	Feed regulating stud retaining spring
16	20215	1	Packing
17	20216	1	Washer
18	10561	2	Set screw for #20210
19	4221	1	Oil suction tube holder
20	8040	1	Set screw for #4221
21	20168	1	Oil suction tube (3)
22	20165	1	Guard for vinyl tubes
23	8040	1	Set screw for #20165
24	20166	1	Vinyl oil tube (1)
25	20167	1	Vinyl oil tube (2)
26	20415	1	Vinyl oil tube (5)
27	20414	1	Vinyl oil tube (4)
28	20406	1	Oil suppling tube (brass)
29	12421	1	Screw for #20406
30	20411	1	Oil stopper packing
31	20410	1	Oil stopper (On side of arm)
32	6341	1	Set screw for oil stopper
33	20403	1	Gear for oil suppling pump (large)
34	13805	2	Screw for #20403
35	20404	1	Gear for oil suppling pump (small)
36	13085	2	Screw for #20404
37	20394	1	Oil suppling pump main body
38	20409	1	Washer for #20408
39	20408	1	Oil suppling pump rotor
40	6604	3	Set screw for #20394
41	20397	1	Cover for oil suppling pump
42	20412	1	Oil controlling plate
43	20407	1	Screw for #20412
44	20398	1	Oil filter
45	20399	1	Frame for #20398
46	20407	3	Screws for #20397
47	20405	3	Oil suppling tube (brass) (lower)
48	20402	3	Packing for #20405
49	20401	3	Connecting screw for #20405
50	20424	2	Bed supporting bolt
51	20400	1	Vinyl oil suppling tube connector (to oil pump)
52	20432	1	Set screw for #20431
53	10703	1	Spring washer for #20432
54	20430	1	Guarding plate for oil pump
55	20431	1	Supporting plate for oil pump
56	8040	4	Set screw for #20430
57	20426	1	Dust protecting cover
58	20427	1	Fixing plate for #20426
59	8111	3	Set screw for #20427

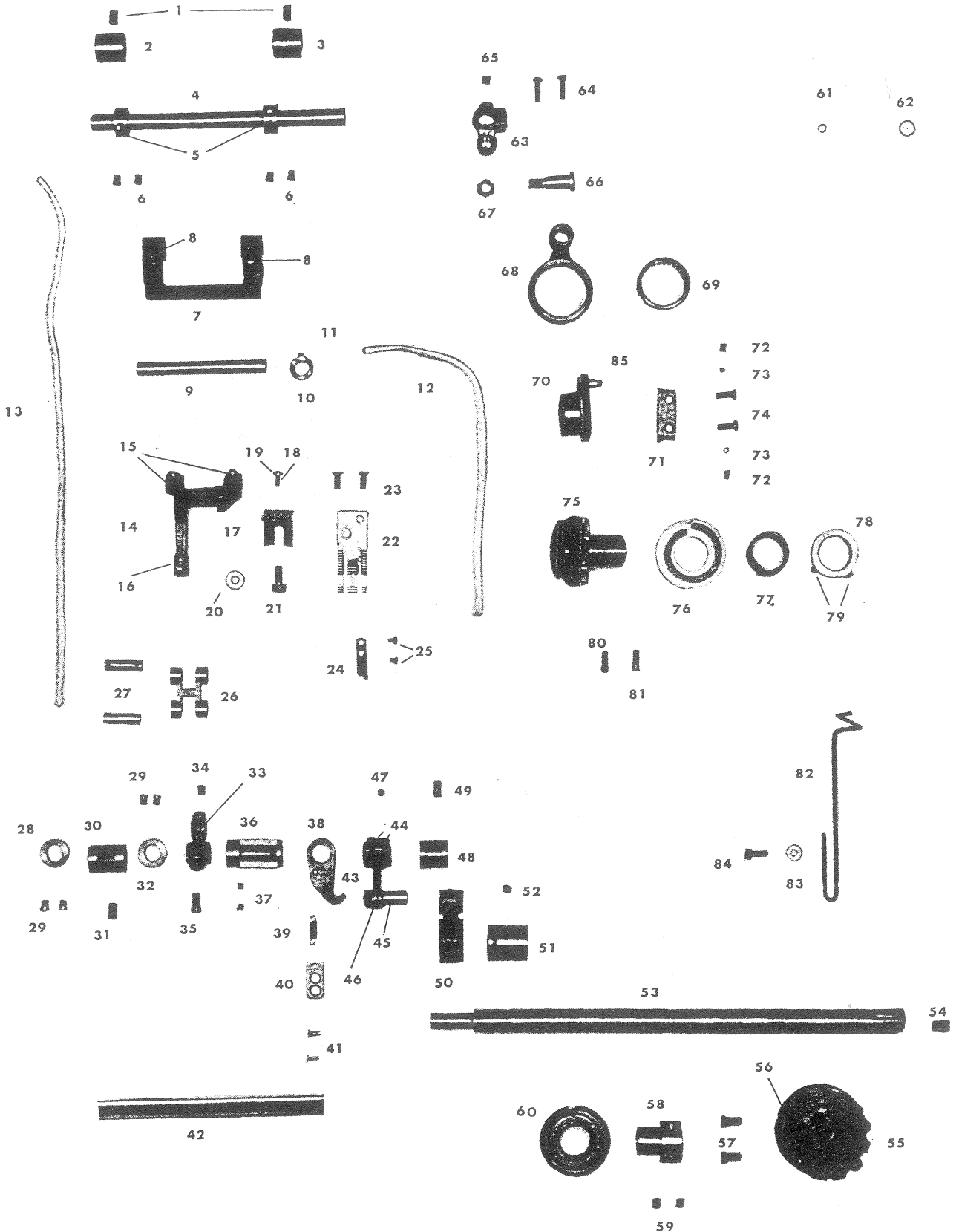
Remarks: Part marked * is used for only 3321 and different parts numbers are used for other models.

Parts marked † are used for needle gauges up to 1 3/4" and different part number is used as above for other gauges.



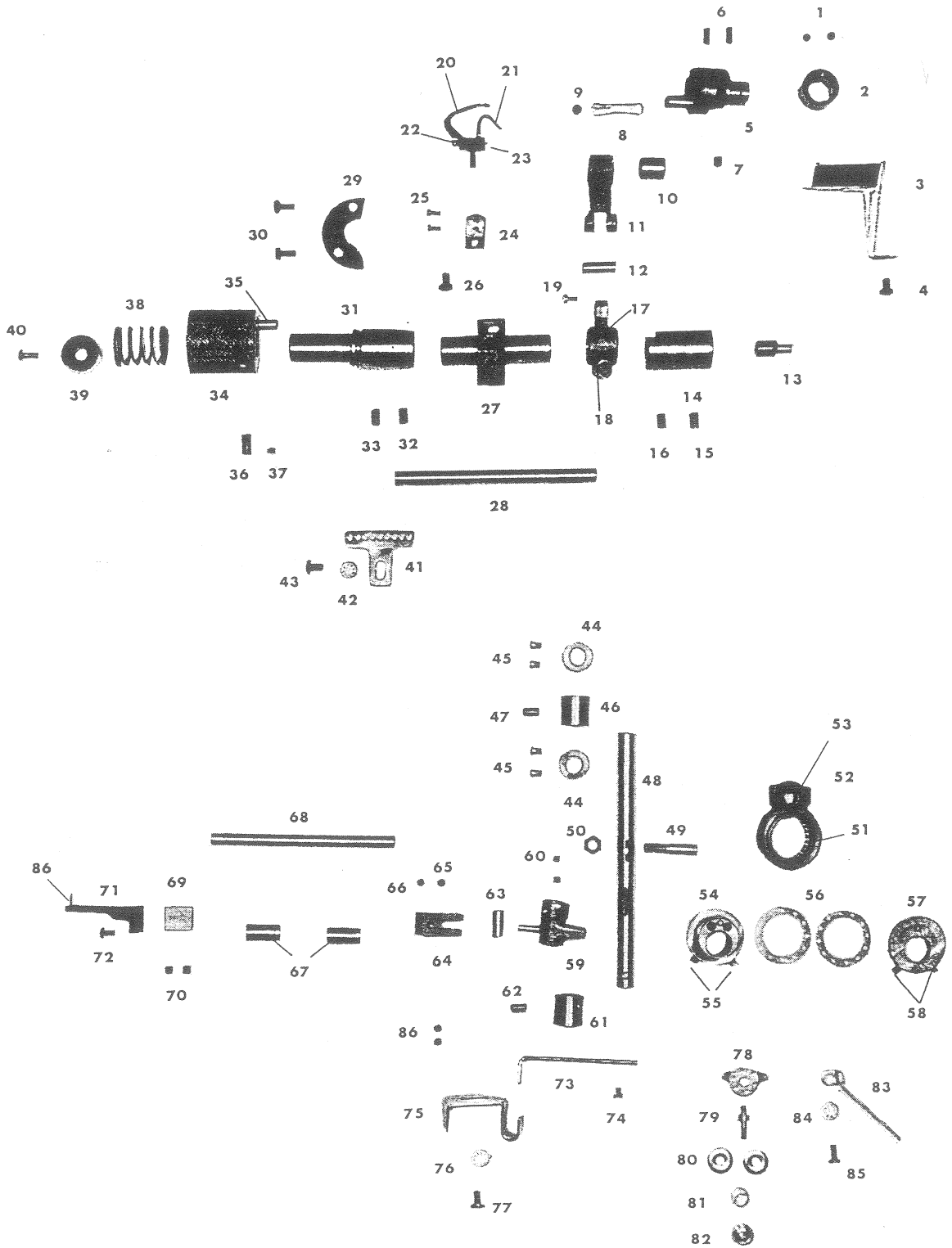
BED SHAFT, FEED DRIVING group

Fig. No.	Parts No.	Quantity	Name
1	10765	2	Set screw #20252 & #20253
2	20252	1	Feed driving rock shaft bushing (front)
3	20253	1	Feed driving rock shaft bushing (rear)
4	20251	1	Feed driving rock shaft
5	20254	2	Feed driving rock shaft collar
6	13033	4	Set screw for #20254
7	20258	1	Feed driving rock frame
8	10765	2	Set screw for #20258
9	20259	1	Feed bar hinge pin
10	20261	1	Collar for feed bar hinge pin
11	12421	1	Set screw for #20261
12	20260	1	Oiling wick for #20259
13	20417	1	Oiling wick for #20278
14	20265	1	Feed bar
15	11176	2	Set screw for #20265
16	11176	1	Set screw for #20279
17	20266	1	Feed dog shank
18	20271	1	Feed dog shank adjusting screw
19	20272	1	Lock nut for #20271
20	13235	1	Washer for #13078
21	13078	1	Feed dog shank screw
22	* 20268	1	Feed dog (for only 321, others use different number)
23	20276	2	Set screw for feed dog
24	* 20273 or 20505	1	Loop deflector (#20273 for 321, others) are #20505
25	* 10597 or 20506	2	Set screw for #20273 (#10597 for 321, others) are #20506
26	20278	1	Feed lifting link
27	20279	2	Feed lifting link hinge pin
28	20254	1	Feed lifting rock shaft bushing collar
29	13033	4	Set screw for #20254
30	20282	1	Feed lifting rock shaft bushing (long)
31	10765	1	Set screw for #20282
32	20254	1	Feed lifting rock shaft bushing collar
33	20281	1	Feed lifting crank
34	11176	1	Feed lifting link hinge pin set screw
35	10612	1	Set screw for #20281
36	20319	1	Looper throw-out safety latch collar
37	13085	2	Set screw for #20319
38	20320	1	Looper throw-out safety latch
39	20321	1	Looper throw-out safety latch spring
40	20322	1	Bracket for #20321
41	6031	2	Set screw for #20322
42	20280	1	Feed lifting rock shaft
43	20283	1	Feed lifting rock shaft crank
44	11073	2	Feed lifting rock shaft crank set screw
45	20284	1	Feed lifting connection hinge stud
46	8105	1	Rock nut for #20284
47	13085	1	Set screw for #20283
48	20253	1	Feed lifting rock shaft bushing (short)
49	10765	1	Set screw for #20253
50	20285	1	Feed lifting connection
51	20237	1	Bed shaft bushing
52	10566	1	Set screw for #20237
53	20236	1	Bed shaft
54	20067	1	Bed shaft oil stop rubber plug
55	20239	1	Bed shaft connection belt pulley
56	10574	1	Spring flange for #20239
57	10612	2	Set screw for #20239
58	20238	1	Collar for #11031
59	10566	2	Set screw for #20238
60	11031	1	Bed shaft ball bearing
61	20218	1	Rubber plug for bed clutch mounting hole
62	20170	2	Rubber plug (A)
63	20257	1	Feed driving rock shaft crank
64	11073	2	Set screw for #20257
65	13085	1	Screw for #20257
66	20256	1	Feed driving connection rod screw
67	8105	1	Lock nut for #20256
68	20255	1	Feed driving connection
69	20073	1	Needle bearing for #20255
70	20244	1	Feed driving eccentric (lower)
71	11095	1	Friction plate
72	2067	2	Set screw for #11095
73	11097	2	Set screw packing (brass)
74	11096	2	Set screw for #11095
75	20075	1	Flange for feed driving eccentric (lower)
76	20245	1	Feed driving eccentric adjusting disc (Down)
77	11099	1	Feed driving eccentric adjusting disc spring
78	11100	1	Collar for #11099
79	10566	2	Set screw for #11100
80	11093	1	Set screw for #20075 (A)
81	11094	1	Set screw for #20075 (B)
82	20413	1	Guard for oil supplying vinyl tube
83	16287	1	Washer for #20413
84	6025	1	Screw for #20413
85	10634	2	Feed driving eccentric pin (upper & lower)



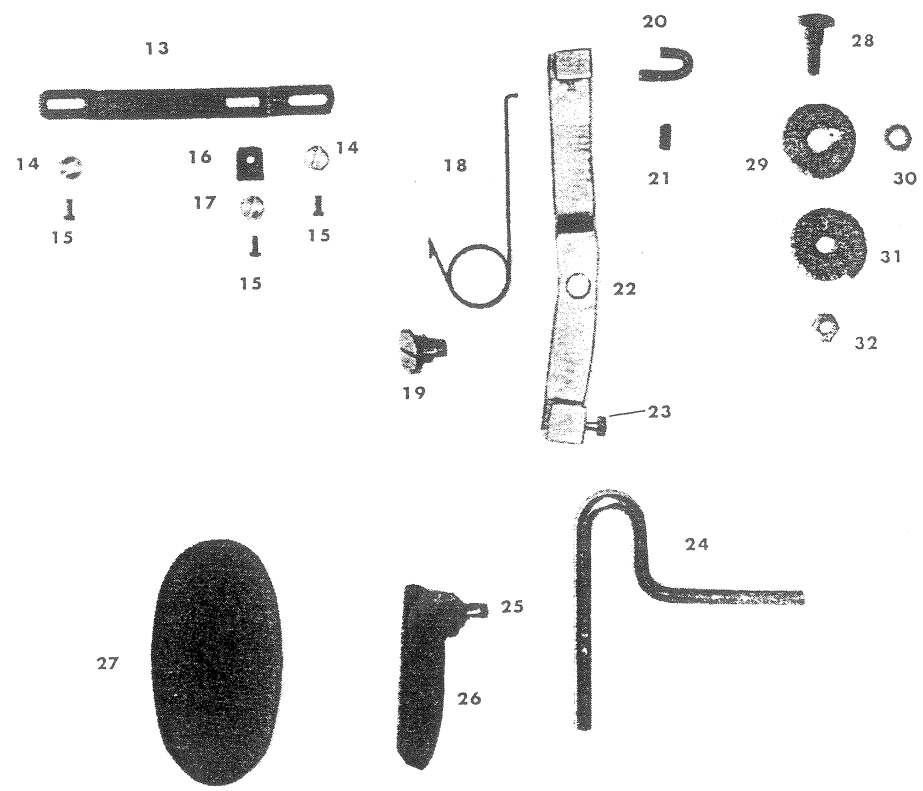
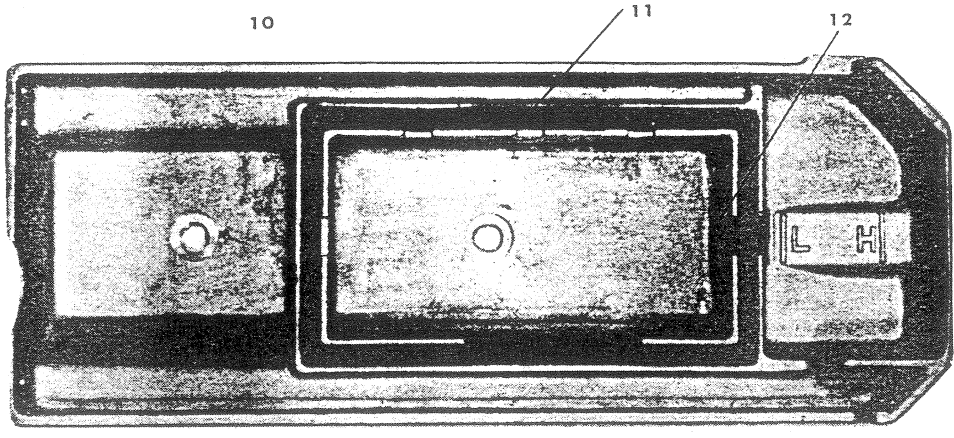
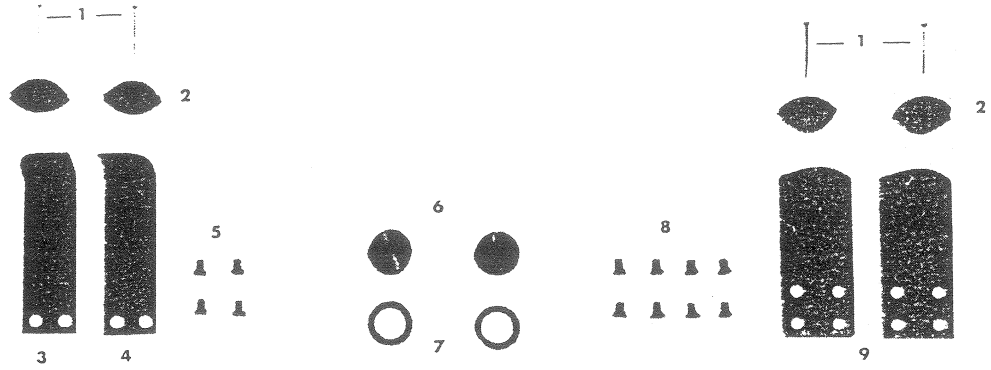
LOOPER, SPREADER group

Fig. No.	Parts No.	Quantity	Name
1	13085	2	Set screw for feed lifting eccentric
1	20286	1	Feed lifting eccentric
3	20323	1	Oil guard for looper driving crank
4	12418	1	Screw for #20323
5	20313	1	Looper driving crank
6	20314	2	Looper driving crank position screw
7	10639	1	Set screw for #20313
8	10726	1	Oil wick
9	11068	1	Looper driving crank oil stopper
10	20316	1	Looper carrier needle bearing
11	20315	1	Looper driving connection
12	20317	1	Looper carrier crank hinge pin
13	20420	1	Vinyl suppling tube connector
14	20310	1	Looper carrier shaft bushing (right)
15	10765	1	Set screw for #20310 (B)
16	10628	1	Set screw for #20310 (A)
17	20318	1	Looper carrier crank (B)
18	10754	1	Set screw for #20318 (large)
19	6604	1	Set screw for #20318 (small)
20	† 20301	1	Looper
21	† 20303	1	Needle guard
22	20304	1	Screw for #20303
23	† 20305	1	Set screw for #20303
24	* 20307	1	Looper holder
25	† 20302	2	Looper set screw
26	20306	1	Looper holder screw
27	20308	1	Looper carrier
28	20309	1	Looper carrier shaft
29	20312	1	Looper carrier shaft bushing position plate (left)
30	8089	2	Set screw for #20312
31	20311	1	Looper carrier shaft bushing (left)
32	10765	1	Set screw for #20311 (B)
33	10628	1	Set screw for #20311 (A)
34	20325	1	Looper throw-out rack rod lever
35	20327	1	Looper throw-out gear locking pin
36	20326	1	Looper throw-out rack rod lever deflection protector pin
37	50230	1	Set screw for #20326
38	20329	1	Coil spring for #20325
39	20328	1	Supporting plate for #20329
40	13330-4	1	Set screw for #20328
41	20228	1	Looper thread guide
42	20053	1	Washer for #20228
43	12418	1	Set screw for #20228
44	20254	2	Spreader driving rock shaft collar
45	13033	4	Set screw for #20254
46	20252	1	Spreader driving rock shaft bushing (A)
47	10766	1	Set screw for #20252
48	20349	1	Spreader driving rock shaft
49	20352	1	Spreader driving rock shaft screw stud
50	8105	1	Lock nut for #20352
51	20355	1	Spreader driving connection needle bearing
52	20354	1	Spreader driving connection with screw
53	20353	1	Spreader driving connection ball bearing
54	20240	1	Spreader driving eccentric
55	10581	2	Set screw for #20240
56	20243	2	Spreader driving eccentric thrust washer
57	20242	1	Spreader driving eccentric counterbalance
58	10581	2	Screw for #20242
59	20356	1	Spreader driving crank
60	11176	2	Screw for #20356
61	20350	1	Spreader driving rock shaft bushing (B)
62	10766	1	Set screw for #20350
63	20348	1	Spreader driving pin
64	20347	1	Spreader driving
65	2067	1	Set screw for #20347 (long)
66	8103	1	Set screw for #20347 (short)
67	20346	2	Spreader bar bushing
68	20345	1	Spreader bar
69	20344	1	Spreader holder
70	12421	2	Screw for #20344
71	* 20341	1	Spreader
72	10561	1	Set screw for #20341
73	20351	1	Looper thread take-up rod
74	12740	1	Screw for #20351
75	20227	1	Looper thread guide (large)
76	20053	1	Looper thread guide washer (large)
77	12418	1	Set screw for #20227
78	† 20229	1	Looper thread tension thread guide
79	† 20223	1	Looper thread tension stud
80	† 20224	2	Looper thread tension disc
81	† 20226	1	Looper thread tension spring
82	† 20225	1	Looper thread tension thumb nut
83	20221	1	Looper thread guide (lower)
84	20222	1	Washer for #20221
85	6025	1	Set screw for #20221
86	13085	2	Screw
87			



OIL TANK, KNEE LIFTER group

Fig. No.	Part No.	Quantity	Name
1	6055	4	Nail for #20387, #20388 & #20389
2	20429	4	Felt cushion for bed
3	20388	1	Oil tank supporting clasp (B)
4	20389	1	Oil tank supporting clasp (C)
5	4139	4	Set screw for #20388 & #20389
6	20384	2	Oil tank drain plug screw
7	20385	2	Packing for #20384
8	4139	8	Set screw for #20387
9	20387	2	Oil tank supporting clasp (A)
10	20386	1	Oil tank
11	20390	1	Oil tank gasket
12	20391	1	Oil filter
13	20369	1	Guide plate for knee lifter lever
14	50254	2	Washer for #20369
15	10559	3	Set screw for #20369 & #20377
16	20377	1	Knee lifter lever stopper
17	50254	1	Set screw for #20377
18	20370	1	Knee lifter lever spring
19	20367	1	Screw for #20366
20	20371	1	Knee lifter lifting trigger
21	4011	1	Set screw for #20371
22	20366	1	Knee lifter lever
23	4192	1	Set screw for #20368
24	20368	1	Knee lifter rod
25	4192	1	Set screw for #4191
26	4191	1	Knee lifter pad supporter
27	4193	1	Knee lifter pad
28	20375	1	Set screw for #20372
29	20372	1	Pully for #20188
30	20373	1	Collar for #20372
31	20374	1	Pully cover
32	20376	1	Nut for #20375
33	20188	1	Knee lifter pull wire



ACCESSORIES

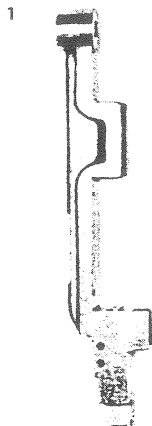
Fig. No.	Parts No.	Quantity	Name
1	6052	4	Bed hinge connection base nail
2	11171	2	Bed hinge connection base
3	11170	4	Set screw for #11169
4	11169	2	Bed hinge connection
5	20332	1	Needle guard wrench (large)
6	20333	1	Needle guard wrench (small)
7	10748	1	Double head wrench
8	11196	1	Tweezers
9	8121	1	Screw driver (small)
10	8120	1	Screw driver (midium)
11	8118	1	Screw driver (large)
12	8132	1	Accessories box
13	20115	3	Needle (DV x 59 #22)
14	6057	1	Vinyl cover
15	11193	1	Oil (large)
16	10780C	1	Thread stand
17	8125	1	Oiler

(☆Parts are changeable without notice.)

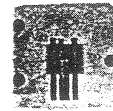
SPECIAL PARTS FOR MODELS 3301, 3302, 3303, 3304

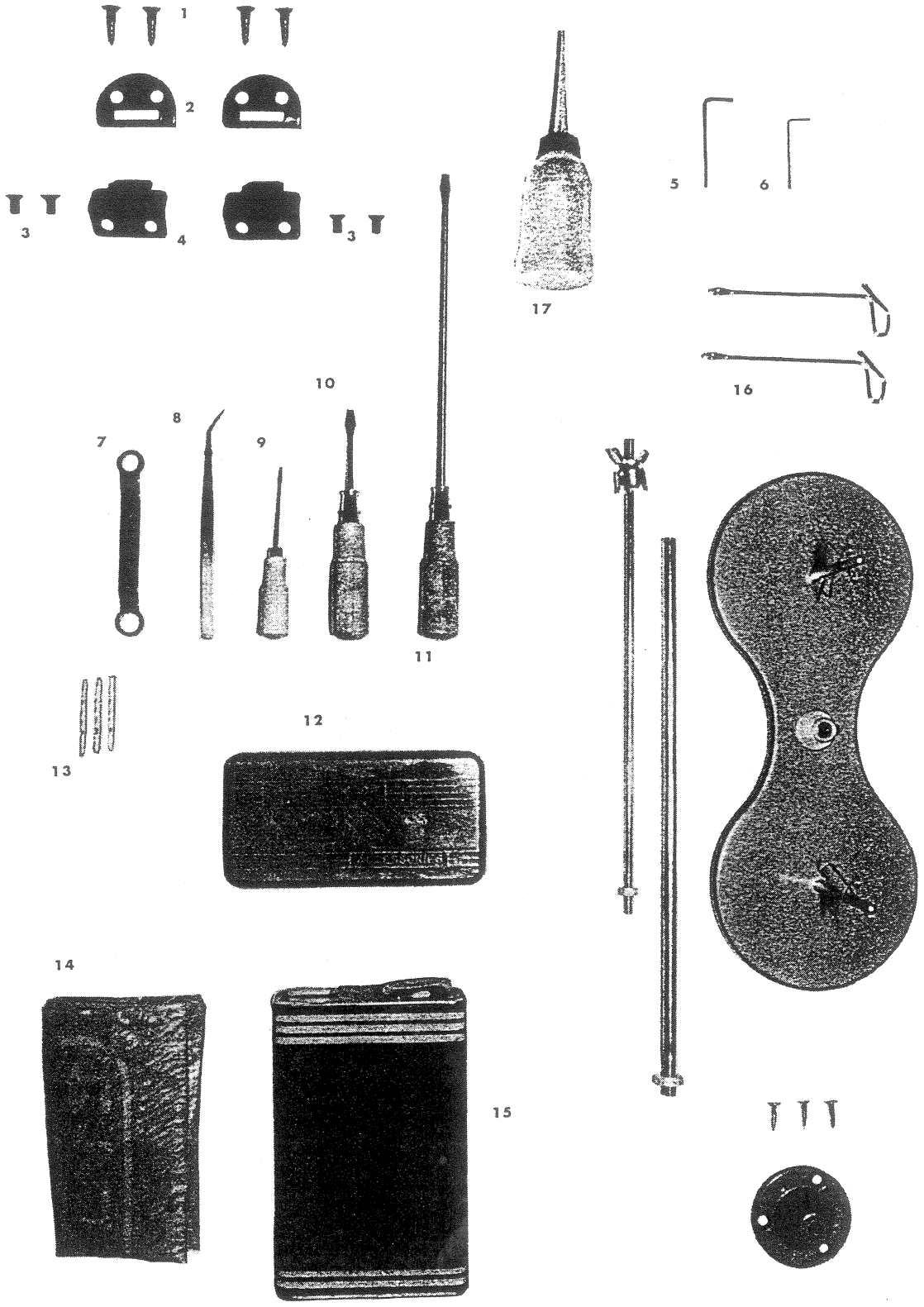
Fig. No.	Parts No.	Quantity	Name
1	21100	1	Needle bar rock frame
2	21101	1	Arm shaft oil packing
3	* 21191	1	Presser foot
4	21104	1	Presser foot set screw
5	* 21108	1	Needle plate
6	* 21109	1	Feed dog
7	20505	1	Loop deflector
8	20506	2	Loop deflector set screw

Remarks: Parts marked * are used for only 3301 and other models differ by number of needle, and needle gauges.



5





NUMERICAL LIST OF PARTS

Parts No.	Page	Fig. No.	Parts No.	Page	Fig. No.
2067	10, 12	72, 65	8132	16	12
	2, 4	28, 14	10503		
4011	14	21	10514	4	43
4098	6	38	10515	4	44
4139	14	5, 8	10517	4	46
4191	14	26	10519	2	43
4192	14	23, 25	10521	2	7
4193	14	27	10522	2, 4	6, 25, 27
4221	8	19	10524	2	10
4514	6	36	10525	2	72
6025	2, 4, 10	70, 2, 84	10532	2, 4	63, 75, 29, 34
	12, 16	85, 1	10535	2	66
6031	6, 10	26, 29, 41	10538	4	24
6042	2	3	10539	4	37
6047	2	4	10541	4	28
6052	16	1	10543	4	26
6055	14	1	10545	4	31
6057	16	14	10549	4	33
6341	8	32	10554	4	55
6604	8, 12	40, 19	10559	4, 14	49, 15
7003			10561	4, 12	40, 72
7004				8	14, 18
8040	8	20, 23, 56	10566	2, 4	31, 70
	6	13, 24, 31		10	52, 59, 79
8042	2	69	10571	4	21
8044	6	34	10574	2, 10	36, 56
8064	6	32	10576	2	32
8089	12	30	10577	4	1
8097	6	4	10579	2	33
8101-10	6	22	10581	2, 12	19, 55, 58
8103	6	6	10597	2, 8, 10	60, 9, 25
	12	66	10612	2, 10	37, 35, 57
8105	2, 12	41, 50	10628	12	16, 33
	10	67, 46	10634	2, 10	79, 85
8111	4, 8	42, 59	10636	4	22
8118	16	11			
8120	16	10			
8121	16	9			
8125	16	17			

Parts No.	Page	Fig. No.	Parts No.	Page	Fig. No.
10639	12	7	12740	2	74
10650	4	53, 58	13011	8, 10	6, 23
10660	4	36	13033	10, 12	6, 29, 45
10662	4	60	13078	10	21
10685	2	77	13085	2, 8	48, 34, 36
10703	4, 8	64, 53		10, 12	37, 47, 65, 1
10726	2, 12	13, 62, 8	13323	6	45
10728	4	71	13330-4	12	40
10754	4, 12	62, 18	13235	10	20
10748	16	7	15038	6	16
10761	4	38	15053	4	45
10754	4, 12	8, 18	16287	10	83
10764	2	9	20004	6	17
10765	12	15, 32	20005	6	23
	10	1, 8, 31, 49	20006	6	21
10766	12	47, 62	20007	6	19
10774	4	65	20008	6	18
10775	4	1, 63	20016	6	14
10776	4	67	20017	6	12
10780	16	16	20018	6	48
11031	2, 10	34, 60	20019	6	49
11044	2, 6	57, 20	20020	6	50
11068	2, 12	12, 9	20021	6	53
11073	10	64, 44	20022	6	54
11090	2	24	20023	6	52
11093	2, 10	22, 80	20024	6	51
11094	2, 10	23, 81	20025	6	47
11095	2, 10	25, 71	20026	6	35
11096	2, 10	26, 74	20027	6	37
11097	2, 10, 6	27, 73, 61	20029	6	46
11099	2, 10	29, 77	20030	6	33
11100	2, 10	30, 78	20031	6	44
11169	16	4	20032	6	43
11170	16	3	20033	6	41
11171	16	2	20034	6	42
11176	10	15, 16, 34	20035	6	40
	12	60	20036	6	39
11193	16	15	20037	6	8
11196	16	8	20038	6	7
12383	2	52	20039	6	5
12418	8	26	20040	6	3
	12	26, 77, 43, 4			
12421	8, 10	29, 11			
	12	70, 74			

19

Parts No.	Page	Fig. No.	Parts No.	Page	Fig. No.
20048	6	57, 60	20109	2	76
20050	6	1	20110	2	58
20051	6	58	20111	2	59
20052	6	55	20112	2	64
20053	6, 12	56, 59, 42, 76	20113	2	74
20054	6	25	20114		
20055	6	28	20115	2, 16	67, 13
20056	6	30	20120	4	35
20057			20121	4	23
20058			20122	4	30
20059			20123	4	48
20062	4	41	20124	4	50
20066	2	1	20125	4	47
20067	2, 10	2, 54	20126	4	56
20068	2	16	20127	4	54
20069	2	8	20128	4	52
20070	2	5	20129	4	59
20071	4	69	20130	4	39
20072	4	66	20132	4	57
20073	4, 10	68, 69	20133	4	51
20074	2	17	20136	4	61
20075	2, 10	20, 75	20138	6	10
20076	2	21	20141	2	51
20077	2	18	20142	2	50
20078	2	35	20143	2	49
20079	2	38	20144	4	17
20080	2	78	20146	4	18
20081			20148	4	32
20082			20149	4	19
20091	2	44	20151	4	13
20092	2	45	20161	2	55
20093	2	39	20162	2	54
20094	2	42	20163	2	56
20095	2	47	20164	2	53
20096	2	46	20165	8	22
20101	2	65	20166	8	24
20102	2	73	20167	8	25
20103	2	71	20168	8	21
20104	2	15	20170	6, 10	27, 62
20105	2	14	20171	6	9, 15
20106	2	11	20172	6	11
20107	2	61	20175	4	6
20108	2	68	20176	4	7

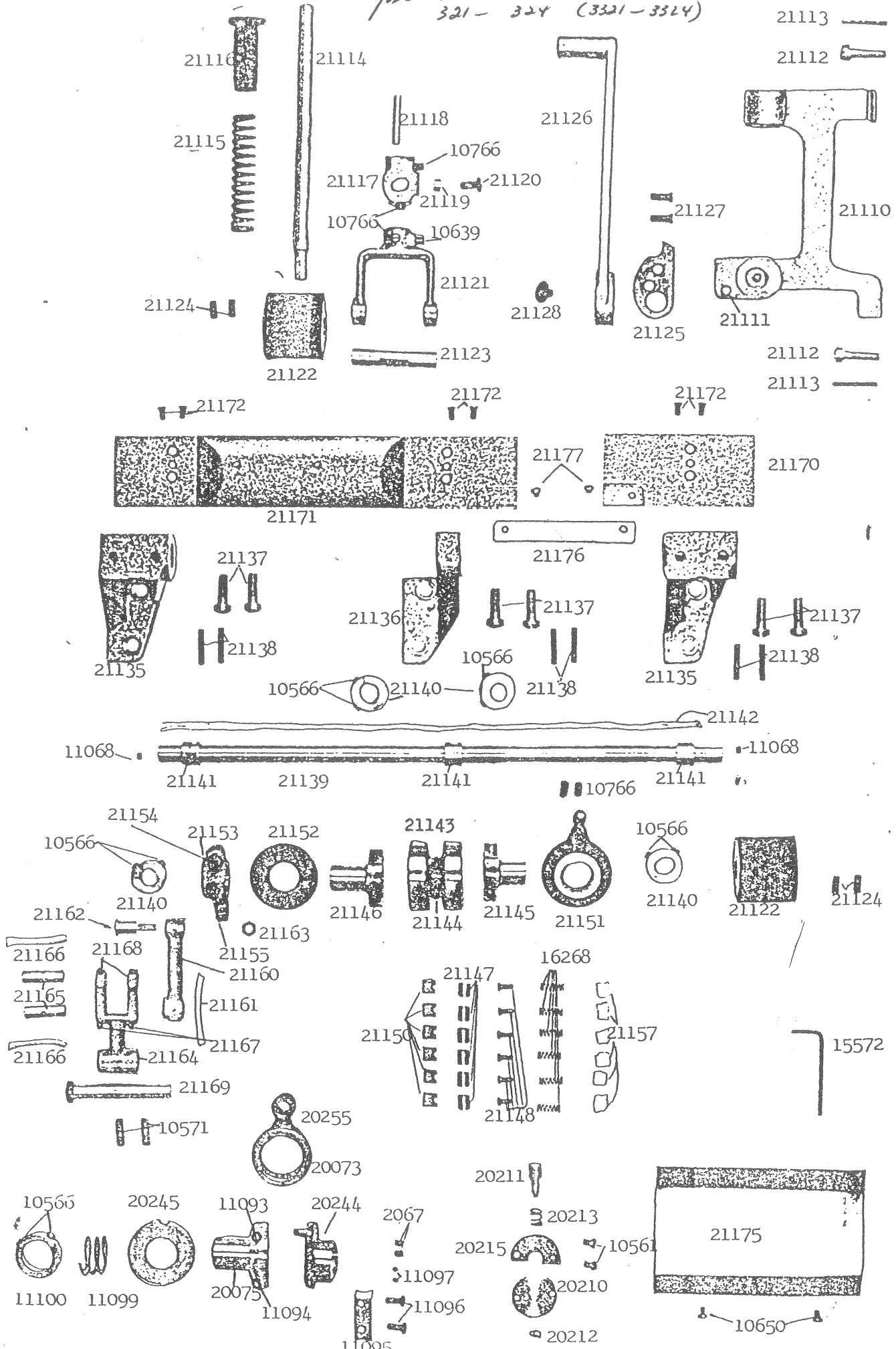
Parts No.	Page	Fig. No.	Parts No.	Page	Fig. No.
20177	4	11	20251	10	4
20178	4	11	20252	10, 12	2, 46
20179	4	9	20253	10	3, 48
20180	4	10	20254	10, 12	5, 28, 32, 44
20181	4	15	20255	10	68
20182	4	12	20256	10	66
20183	4	20	20257	10	63
20184	4	16	20258	10	7
20188	14	33	20259	10	9
20189	4	5	20260	10	12
20190	4	3	20261	10	10
20191	4	4	20265	10	14
20200			20266	10	17
20204	8	3	20268	10	22
20205	8	2	20271	10	18
20206	8	1	20272	10	19
20207	8	7	20273	10	24
20208			20275	8	5
20209	8	8	20276	8, 10	6, 23
20210	8	13	20278	10	26
20211	8	10	20279	10	27
20212	8	15	20280	10	42
20213	8	11	20281	10	33
20215	8	12, 16	20282	10	30
20216	8	17	20283	10	43
20218	10	61	20284	2, 10	40, 45
20221	12	83	20285	10	50
20222	12	84	20286	12	2
20223	12	79	20301	12	20
20224	12	80	20302	12	25
20225	12	82	20303	12	21
20226	12	81	20304	12	22
20227	12	75	20305	12	23
20228	12	41	20306	12	26
20229	12	78	20307	12	24
20236	10	53	20308	12	27
20237	10	51	20309	12	28
20238	10	58	20310	12	14
20239	10	55	20311	12	31
20240	12	54	20312	12	29
20242	12	57	20313	12	5
20243	12	56	20314	12	6
20244	10	70	20315	12	11
20245	10	76			

21

Parts No.	Page	Fig. No.	Parts No.	Page	Fig. No.
20316	12	10	20388	14	3
20317	12	12	20389	14	4
20318	12	17	20390	14	11
20319	10	36	20391	14	12
20320	10	38	20394	8	37
20321	10	39	20397	8	41
20322	10	40	20398	8	44
20323	12	3	20399	8	45
20325	12	34	20400	8	51
20326	12	36	20401	8	49
20327	12	35	20402	8	48
20328	12	39	20403	8	33
20329	12	38	20404	8	35
20332	16	5	20405	8	47
20333	16	6	20406	8	28
20341	12	71	20407	8	43, 46
20343			20408	8	39
20344	12	69	20409	8	38
20345	12	68	20410	8	31
20346	12	67	20411	8	30
20347	12	64	20412	8	42
20348	12	63	20413	10	82
20349	12	48	20414	8	27
20350	12	61	20415	8	26
20351	12	73	20417	10	13
20352	12	49	20420	12	13
20353	12	53	20424	8	50
20354	12	52	20426	8	57
20355	12	51	20427	8	58
20356	12	59	20429	14	2
20366	14	22	20430	8	54
20367	14	19	20431	8	55
20368	14	24	20432	8	52
20369	14	13	20460		
20370	14	18	20461		
20371	14	20	20462		
20372	14	29	20463		
20373	14	30	20464		
20374	14	31	20475		
20375	14	28	50154	6	2
20376	14	32	50230	12	37
20377	14	16	50254	14	14, 17
20384	14	6			
20385	14	7			
20386	14	10			
20387	14	9			

Remarks: The special parts for models 3301 3302 3303 3304 are mentioned on page 15

Model 301 - 305 (3301 - 3305)
321 - 324 (3321 - 3324)



Intentionally left blank

LIST FOR THE PARTS HAVING INTERCHANGEABILITY BETWEEN
SINGER 300W(or 300U) and SEIKO LD-8(CONSEW 3321)

1996/10/28

SINGER	PART NAME	SEIKO	CONSISTING ON	REMARKS
268258	HINGE PIN	20279		
268078	FEED LIFTING LINK	20278		
269699	F/LIFTING ROCK SHAFT	20280		
415204	FEED LIFTING CRANK	20281C	11176X1, 10612X1	
415206	F/L/ROCK SHAFT CRANK	20283C	13031X1, 11073X2	
541197	NUT	8105		SET PARTS
415091	HINGE STUD	20284		
268035	FEED BAR HINGE PIN	20259		
415202	COLLAR	20261C	12421X1	
415200	FEED ROCK FRAME	20258C	10765X2	
415198	FEED BAR WITH SCREWS	20265C	11176X3	
268099	LOOPER CONNECTION(A)	20315		
268208	HINGE PIN	20317		
415174	LOOPER CRANK W/SCREWS	20318C	6604X1, 10754X1	
415923	SCREW STUD	20352		SET PARTS
545424	NUT	8105		
544204-001	SCREW	20357		SET PARTS
544204-001	SCREW	11953		
415194	SPREADER DRIVING CRANK	20356C		
268052	L/THREAD TAKE-UP ROD	20351		
269619	L/THREAD GUIDE(LARGE)	20227		
415213	FEED ROCK SHAFT CRANK	20257C	13085X1, 11073X2	
268060	FEED CONNECTING ROD	20255		
268074	FEED LIFTING CONN. ROD	20285		
415073	F/DRIVING FLANGE COMP.	20075C	11095X1, 2067X2, 11093X1, 11097X2, 11096X2, 11094X1	SET PARTS
268066	ADJUSTING DISC SPRING	11099		
412011	SPRING PRESSER COLLAR	11100C		SET PARTS
544325	SCREW	10566	(10566X2)	
415184	DRIVING CONN. W/SCREW	20354		SET PARTS
351876	BALL BEARING	20353		
268220	THRUST WASHER	20243		
415190	COLLAR	20242C	10581X2	
415157	CONNECTING BELT PULLEY	20078C	10612X2, 10574X2	
415133	NEEDLE BAR CRANK	20070C	10522, 10521, 20069 10764, 10524, 20106, 11068, 10726	SET PARTS
415187	SPREADER ECCENTRIC	20240C		SET PARTS
543808-002	SCREW	10581	(10581X2)	
414528	SCREW	10581	(10581X2)	
268499	SPREADER DRIVER	20347C	20347X1, 20345X1, 2067X1, 8042X1	SET PARTS
54279	THREAD GUIDE	20025		
268082	REGULATING STUD SOCKET	20210		
268081	FEED REGULATING STUD	20211		
270026	REGULATING STUD SPRING	20213		
240245	PUSH BUTTON CLIP	10674		

Consolidated Sewing Machine Corp.

MAIN OFFICE

131 West 25th Street
New York, NY 10001
Tel: (212) 741-7788
Fax: (212) 741-7787

BRANCH OFFICE

7855 NW 29th Street, Bay 166
Miami, FL 33122
Tel: (305) 471-0200
Fax: (305) 471-0243