

MODEL : CR10A

List No : 1702-00

# PARTS LIST

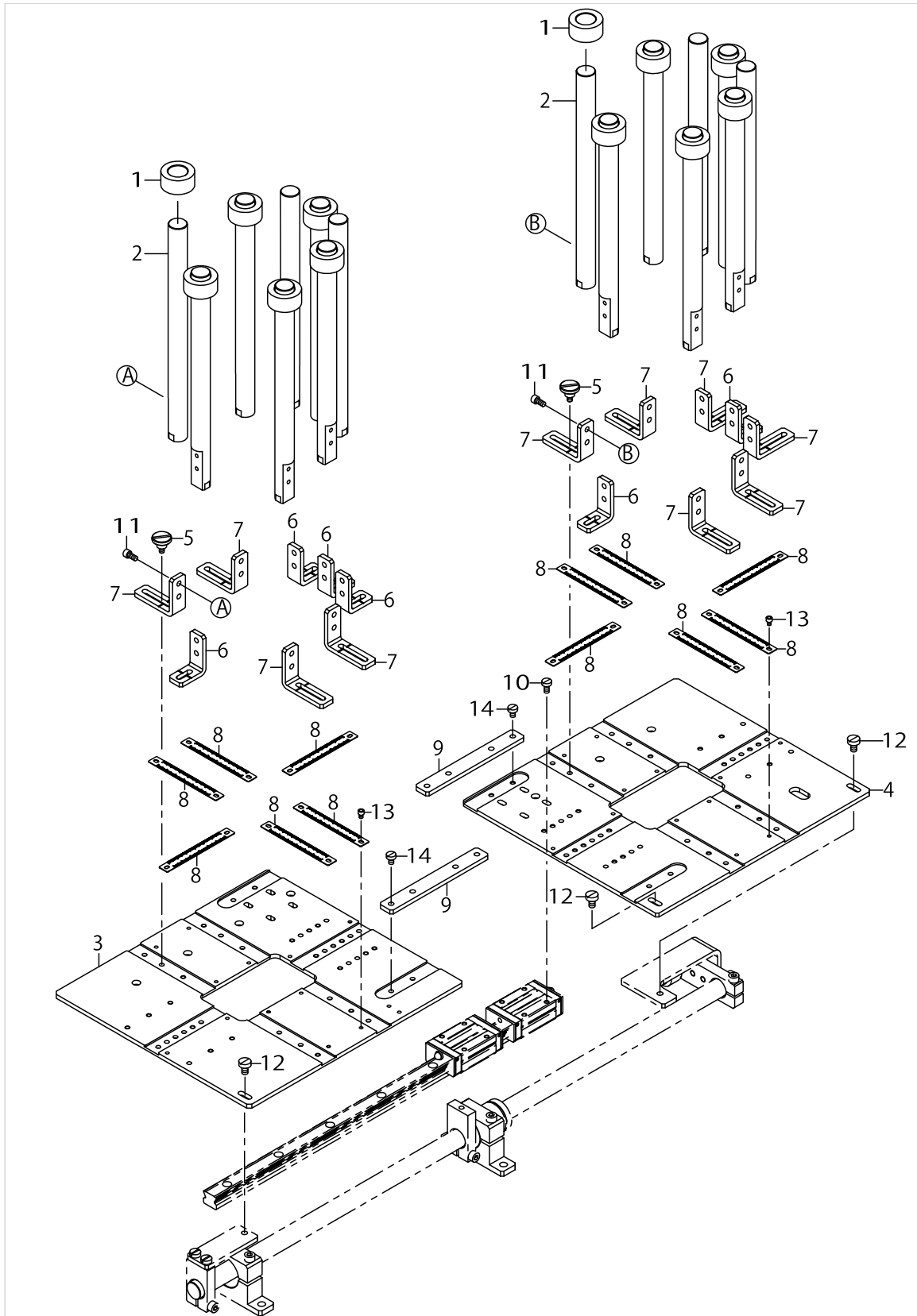
Published:09/10/2017

## CONTENTS

---

SHOE TONGUE BASE COMPONENTS .....	1
SHOE TONGUE LIFT COMPONENTS.....	3
SHOE TONGUE BASE EXCHANGE COMPONENTS .....	5
PICKUP COMPONENTS.....	7
SHOE TONGUE LOADING COMPONENTS .....	11
SHOE TONGUE DISCHARGE COMPONENTS .....	13
AIR COMPONENTS .....	15
COVER COMPONENTS.....	19
WIRING DIAGRAM .....	21
ACCESSORIE PARTS COMPONENTS .....	23
HOW TO MAKE USE OF THIS PARTS LIST .....	25

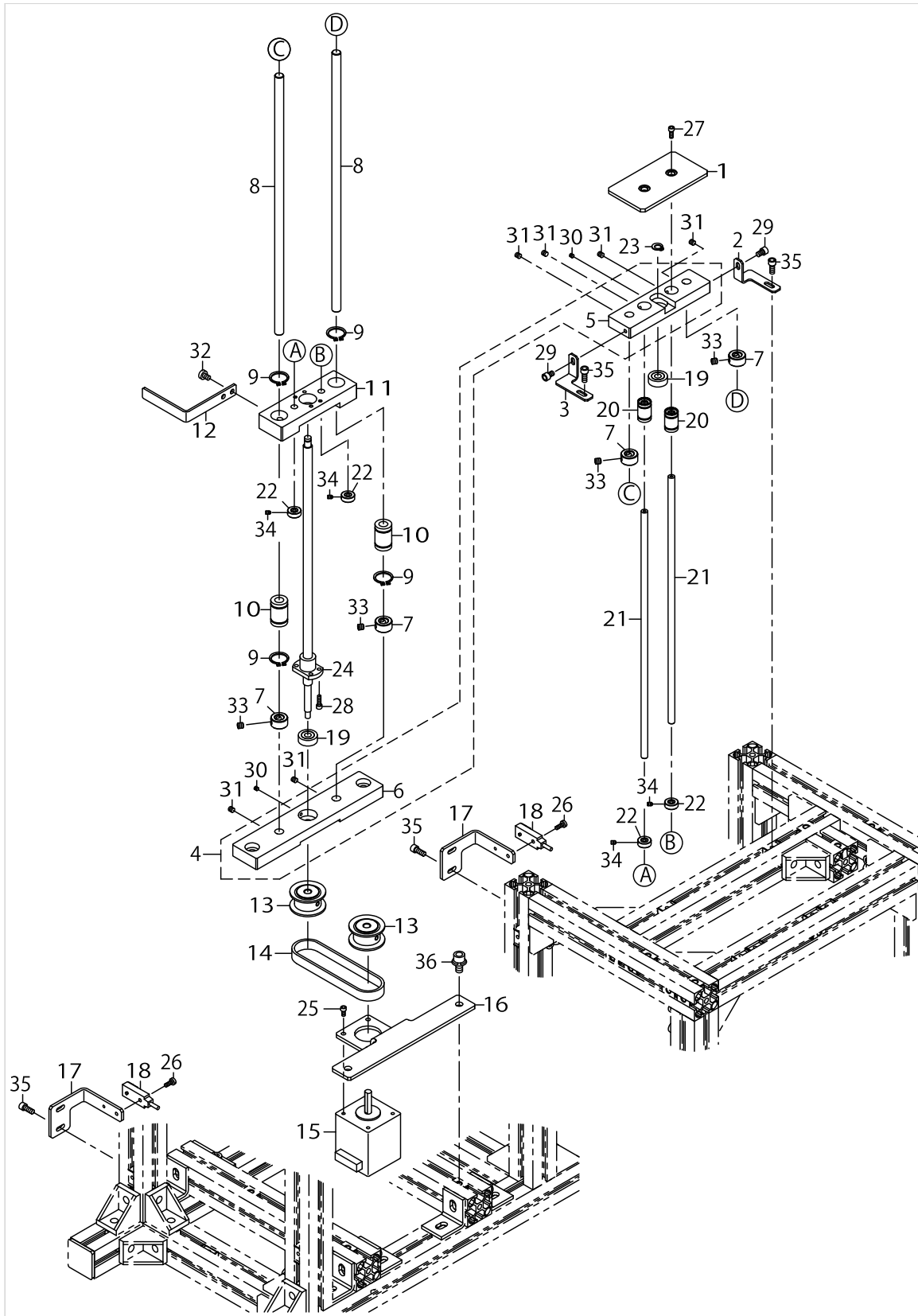
# SHOE TONGUE BASE COMPONENTS



SHOE TONGUE BASE COMPONENTS

No.	Parts No.	Parts name	Remarks	Level	Cons	Qty
1	40180461	COLLAR				12
2	40180462	GUIDE_STICK				16
3	40180476	TABLE_FRONT				1
4	40180475	TABLE_REAR				1
5	40180604	KNOB				16
6	40180466	GUIDE_STICK_BRACKET_S				6
7	40180463	GUIDE_STICK_BRACKET_L				10
8	40180465	SHOE_TONGUE_WIDTH_SCALE_PLATE				12
9	40180473	PLATE				2
10	SM6040800SP	SCREW				8
11	SM6040802TP	SCREW M4X0.7 L=8				32
12	SM6050800SP	SCREW M5 L=8				3
13	SM6030402TN	SCREW M3X4				24
14	SM6040600SP	SCREW M4 L=6				8

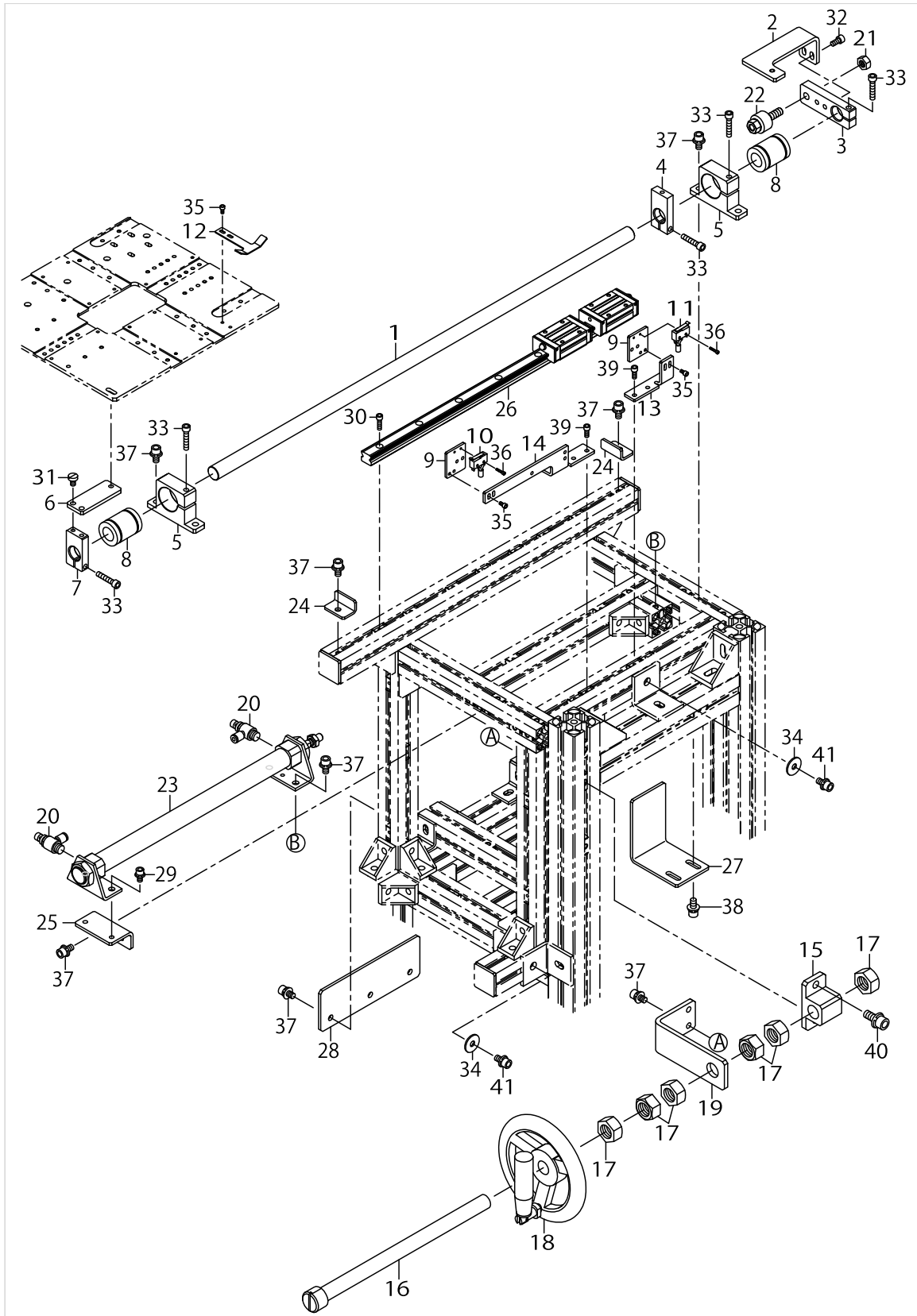
# SHOE TONGUE LIFT COMPONENTS



SHOE TONGUE LIFT COMPONENTS

No.	Parts No.	Parts name	Remarks	Level	Cons	Qty
1	40180464	LIFTING_PLATFORM_ASM				1
2	40180468	REAR_BRACKET				1
3	40180477	FRONT_BRACKET				1
4	40180474	BALL_SCREW_BASE_ASSY				1
5	40180583	UPPER_BASE		*		1
6	40180582	BALL_SCREW_BASE		*		1
7	CS0800881TP	THRUST COLLAR D=8 W=8				4
8	40180610	SHAFT				2
9	RC0150001KP	C-RING 15 (13.8)				4
10	SB708000100	BEARING				2
11	40180469	MID_BASE				1
12	40180472	SENSOR_PLATE				1
13	40180606	SPROCKET				2
14	40180608	TIMING_BELT				1
15	40044473	ROLLER STACKER MOTOR				1
16	40180471	BRACKET				1
17	40180470	SENSOR_BRACKET				2
18	70005187	FEED MOTOR U/D SENSOR ASSY				1
19	SB106000200	BEARING				2
20	SB706000100	BEARING				2
21	40180612	LIFTING_SHAFT				2
22	40010477	AT_SOL_COLLAR				4
23	RC0560711KP	C-RING 6 (5.6)				1
24	40180611	BALL_SCREW				1
25	SM6030602TP	SCREW M3X0.5 L=6				4
26	SM6030800SP	SCREW M3X0.5 L=8				2
27	SM6030802TP	SCREW M3X0.5 L=8				2
28	SM6031002TP	SCREW M3X0.5 L=10				4
29	SM6040602TN	SCREW				2
30	SM8030312TP	SCREW M3 L=3				2
31	SM8040412TP	SCREW M4X4				6
32	SM6040600SP	SCREW M4 L=6				2
33	SM8050512TP	SCREW				8
34	SM8030412TP	SCREW				8
35	SM6041002TP	SCREW M4X0.7 L=10				6
36	SL6061292TN	SCREW				4

# SHOE TONGUE BASE EXCHANGE COMPONENTS

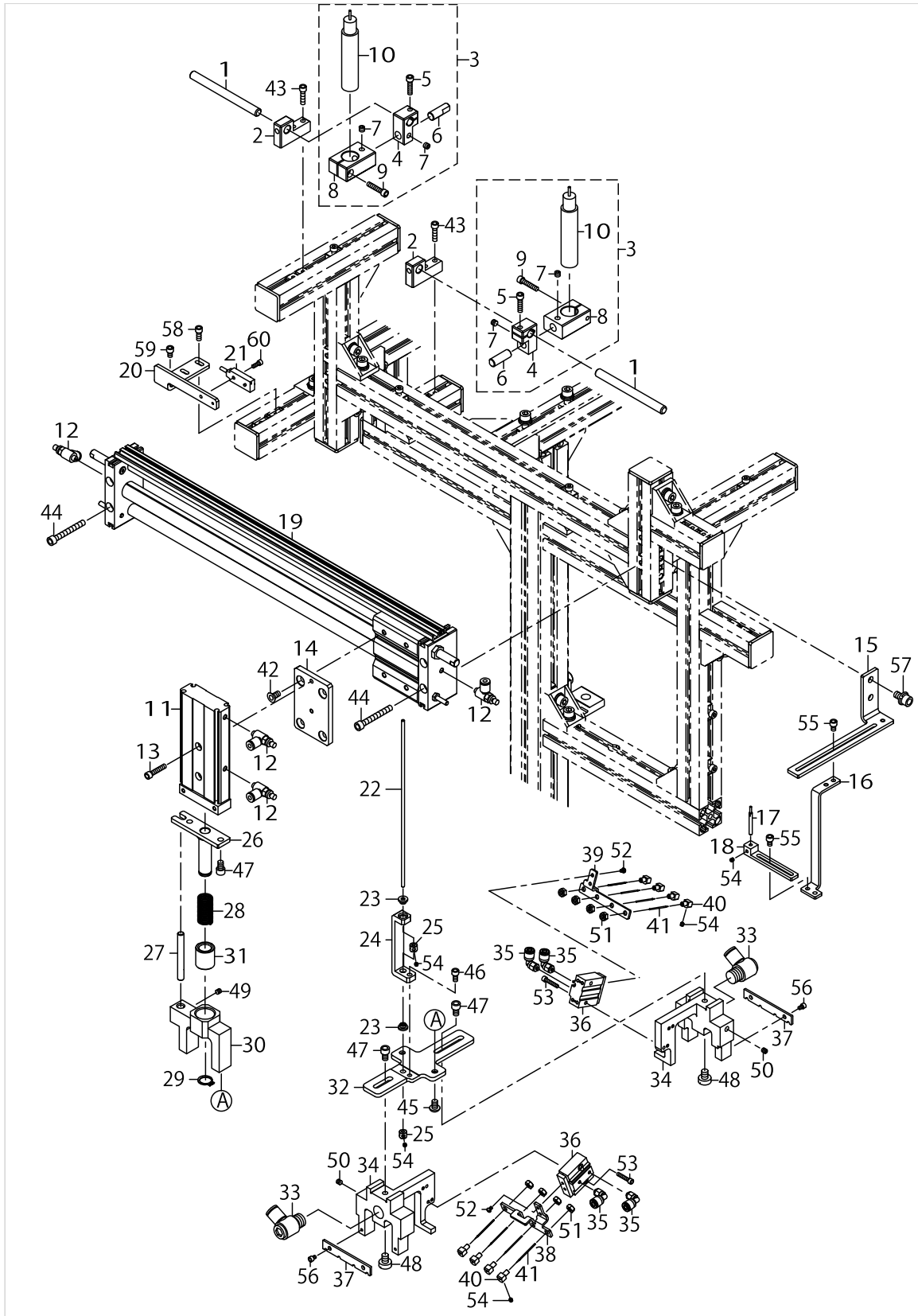


SHOE TONGUE BASE EXCHANGE COMPONENTS

No.	Parts No.	Parts name	Remarks	Level	Cons	Qty
1	40180617	SHAFT				1
2	40180490	SUPPORT_BRACKET				1
3	40180486	BLOCK				1
4	40180492	SUPPORT_BLOCK				1
5	40180487	FRONT_BLOCK				2
6	40180489	CONNECTION_PLATE				1
7	40180488	SUPPORT_BLOCK				1
8	SB716000100	BEARING				2
9	40183357	PLATE				2
10	40182373	LIMIT SWITCH A CORD ASSY				1
11	40182374	LIMIT SWITCH B CORD ASSY				1
12	40183360	YIELDING_PLATE				1
13	40183359	SENSOR_BRACKET_REAR				1
14	40183358	SENSOR_BRACKET_FRONT				1
15	40180484	BOLT HOLDER				1
16	40180619	BOLT				1
17	NM6160001SC	NUT M16X2 TYPE1				6
18	40180614	SPOKE_HANDLE				1
19	40180485	BRACKET				1
20	PC015108000	SPEED CONTROLLER				2
21	NM6080001SC	NUT M8X1.25 TYPE1				1
22	PA900063000	FLOATING JOINT				1
23	PA2025003A0	AIR CYLINDER				1
24	40180479	BRACKET				2
25	40180491	CYLINDER_SUPPORT_BRACKET				1
26	40180618	LM_GUIDE				1
27	40180568	STOPPER_LEFT				1
28	40180482	STOPPER_PLATE				1
29	SL6051092TN	SCREW M5 L=10				2
30	SM6041402TN	SCREW M4X0.7 L=14				7
31	SM6050800SP	SCREW M5 L=8				2
32	SM6051002TP	SCREW M5X0.8 L=10				2
33	SM6052502TP	SCREW M5X25				5
34	WP0651646SC	WASHER				2
35	SM6030602TP	SCREW M3X0.5 L=6				6
36	SM6021002TN	SCREW M2X10				4
37	SL6061292TN	SCREW				15
38	SL6061492TN	BOLT				2
39	SM6041002TN	BOLT				4
40	SL6082092TN	BOLT				2
41	SL6061292TN	SCREW				2



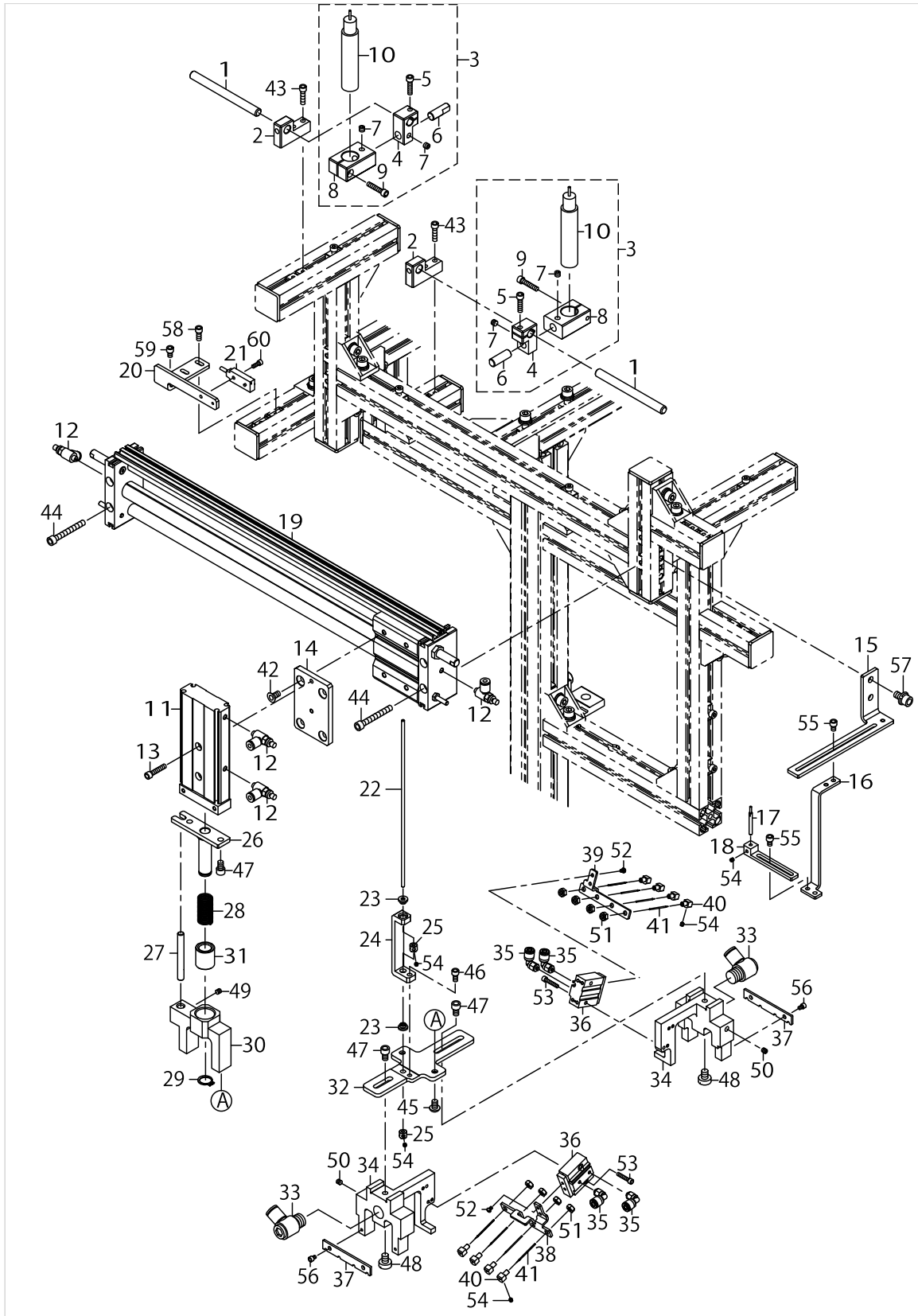
PICKUP COMPONENTS



PICKUP COMPONENTS

No.	Parts No.	Parts name	Remarks	Level	Cons	Qty
1	20104402	HANDLE				2
2	40091171	MARKER_FIXED_ROD HOLDER				2
3	40111891	LED_MARKING_ASSY				2
4	40091172	MARKER_FIXED_BLOCK		*		1
5	SM6041602TP	SCREW M4X0.7 L=16		*		1
6	40091173	MARKER_FIXED_SUB_ROD		*		1
7	SM8050412TP	SCREW M5 L=4		*		2
8	40067813	MARKER_BRACKET		*		1
9	SM6042002TP	SCREW M4X0.7 L=20		*		1
10	40090637	LED MARKING		*		1
11	PA1505004A0	AIR CYLINDER				1
12	PC010508000	SPEED CONTROLLER				4
13	SM6042002TP	SCREW M4X0.7 L=20				2
14	40180505	CYLINDER BASE				1
15	40180508	BRACKET				1
16	40180506	BRACKET				1
17	HD002820010	SENSOR				1
18	40180507	SENSOR_BASE				1
19	PA1535001A0	RODLESS CYLINDER				1
20	40180504	SENSOR_BRACKET				1
21	70005172	CLOTH HEIGHT SENSOR ASSY				1
22	40180621	SHAFT				1
23	40180624	BUSHING				2
24	40180503	UPPER_BLOCK				1
25	40180623	COLLAR				2
26	40180493	SHAFT_ASSY				1
27	40180496	GUIDE				1
28	40180627	SPRING				1
29	RC1200001KP	C-RING 12 (11.1)				1
30	40180500	BASE				1
31	40180628	METAL				1
32	40180502	BRACKET				1
33	PJ304085204	UNIVERSAL ELBOW				2
34	40180501	PAD_LARGE				2
35	PJ304040301	UNION ELBOW JOINT				4
36	PA060080200	AIR CYLINDER				2
37	40182744	PLATE				2
38	40180497	NEEDLE_HEAD_BRACKET_FRONT				1
39	40180498	NEEDLE_HEAD_BRACKET_REAR				1
40	40180499	NEEDLE_HEAD				8
41	40180554	NEEDLE				8
42	SM1051052TN	PLATE SCREW M5 L=10				4
43	SM6041602TP	SCREW M4X0.7 L=16				4
44	SM6054002TN	SCREW M5X0.8 L=40				4
45	SM4050855SP	SCREW				2
46	SM6040802TP	SCREW M4X0.7 L=8				1
47	SM6050802TP	SCREW M5X0.8 L=8				4

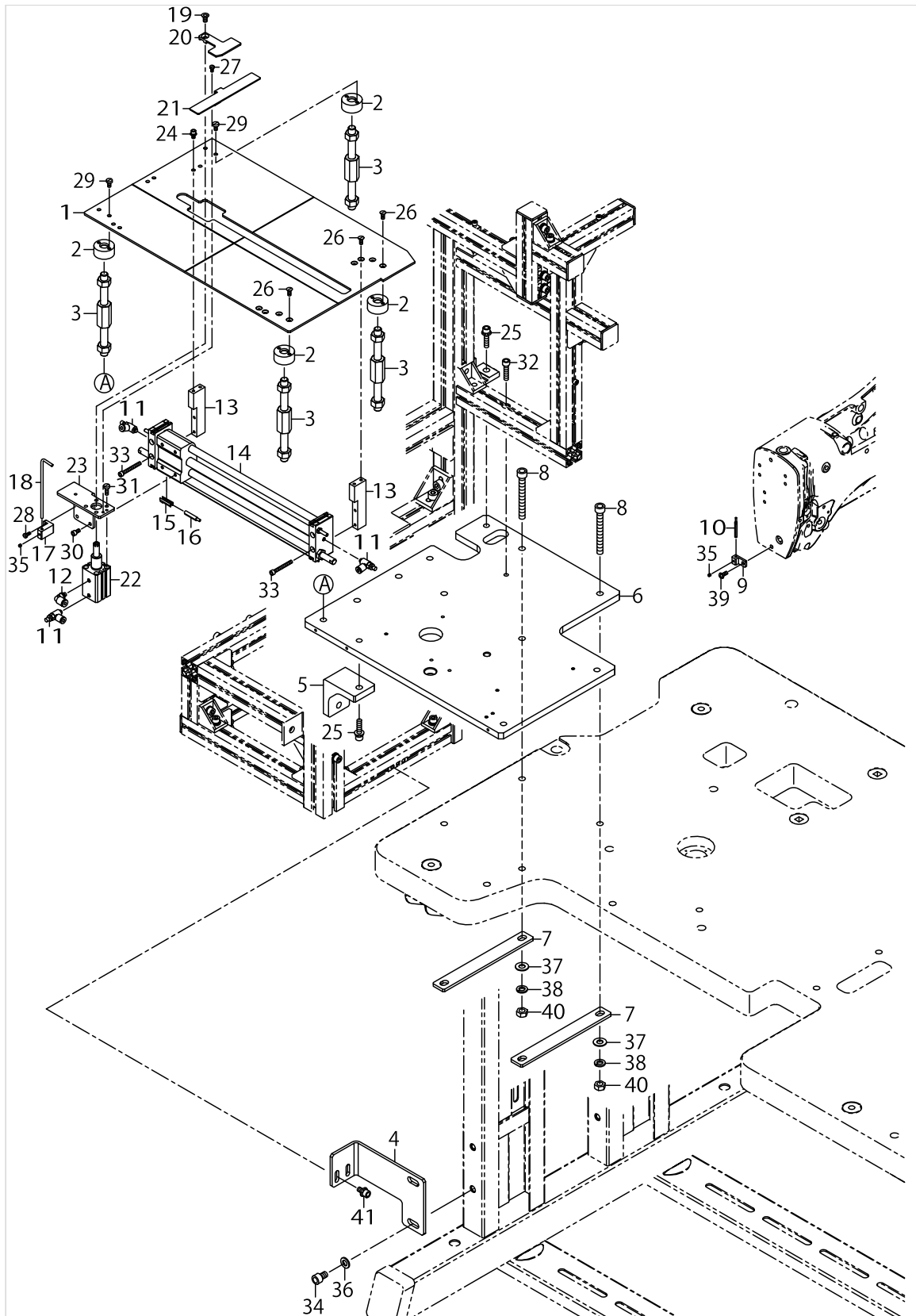
PICKUP COMPONENTS



PICKUP COMPONENTS

No.	Parts No.	Parts name	Remarks	Level	Cons	Qty
48	SM6060800SP	SCREW M6 L=8				2
49	SM8040412TP	SCREW M4X4				1
50	SM8050502TP	SCREW M5 L=5				2
51	NM6040001SC	NUT M4X0.7 TYPE1				8
52	SM4850455SP	SCREW				4
53	SM6031602TP	SCREW				4
54	SM8030312TP	SCREW M3 L=3				12
55	SM6040602TN	SCREW				4
56	SM6030402TP	SCREW M3X0.5 L=4				4
57	SL6061292TN	SCREW				2
58	SM6041002TN	BOLT				2
59	SM6040602TN	BOLT				1
60	SM6030802TP	SCREW M3X0.5 L=8				1

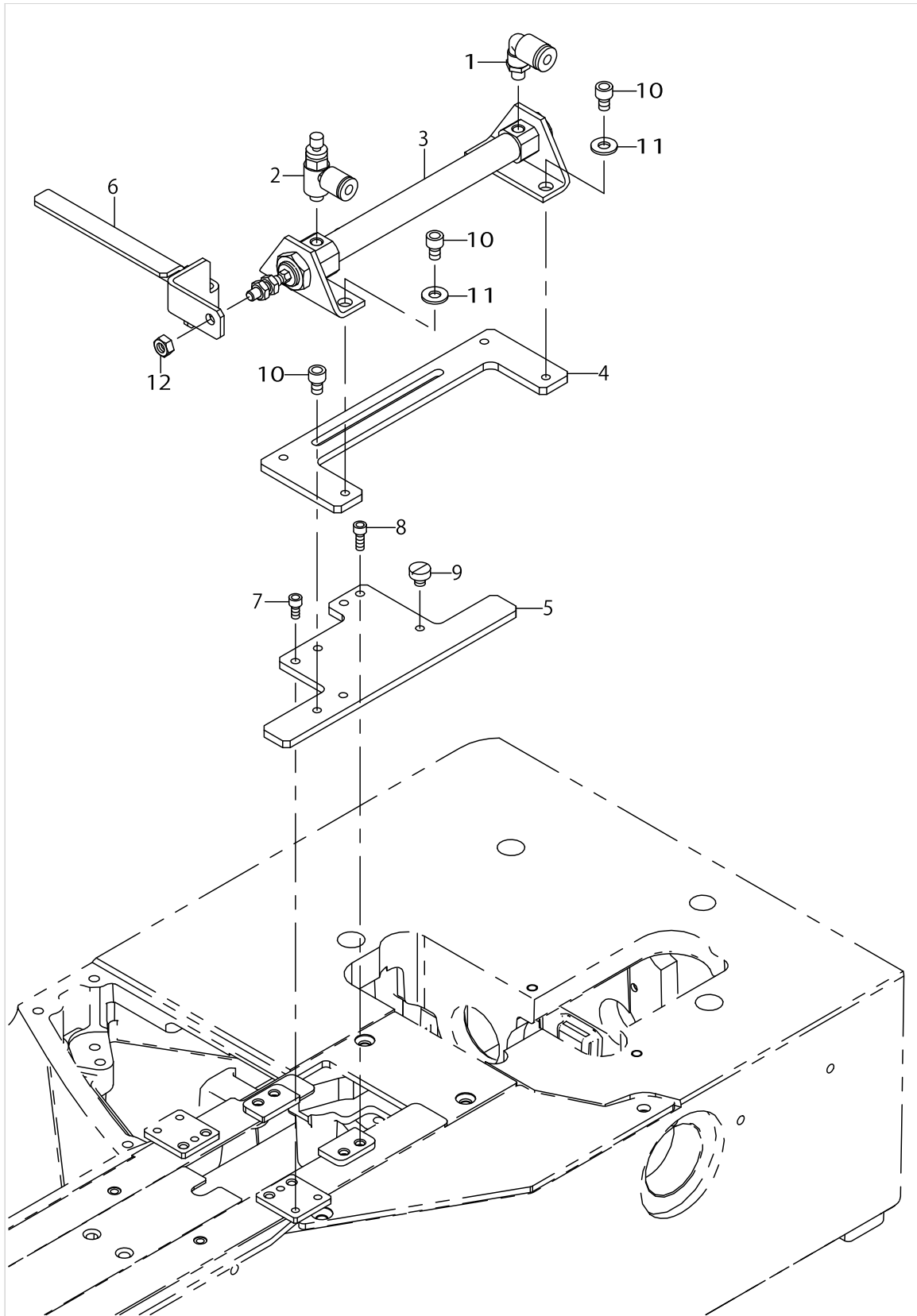
# SHOE TONGUE LOADING COMPONENTS



SHOE TONGUE LOADING COMPONENTS

No.	Parts No.	Parts name	Remarks	Level	Cons	Qty
1	40180445	MIDDLE_TABLE				1
2	40180453	BUSH				4
3	40180631	ADJUSTING_BOLT_ASM				4
4	40180460	BRACKET				1
5	40180455	BRACKET				1
6	40180446	BASE				1
7	40180458	SUPPORT_PLATE				2
8	SM6087002TN	SCREW M8 L=70				4
9	40180457	SENSOR_BASE				1
10	HD002820010	SENSOR				1
11	PC010508000	SPEED CONTROLLER				3
12	PJ304040504	UNION				1
13	40180452	CYLINDER_SUPPORT_BLOCK				2
14	PA1025001A0	AIR CYLINDER				1
15	PX950016000	SENSOR BRACKET				1
16	40184245	SENSOR ASSY				1
17	40180459	TUBE_BLOCK				1
18	40180456	TUBE				1
19	SM1051052TN	PLATE SCREW M5 L=10				1
20	40180448	PRESSOR_PLATE				1
21	40180449	LOWER_PLATE				1
22	PA160102000	AIR CYLINDER				1
23	40180454	CYLINDER_BRACKET				1
24	SL6040892TN	SCREW M4 L=8				2
25	SL6082592TN	SCREW M8 L=25				2
26	SM1040800SP	SCREW				6
27	SM6030600SP	SCREW M3X0.5 L=6				2
28	SM6030800SP	SCREW M3X0.5 L=8				2
29	SM6040800SP	SCREW				4
30	SM6040802TN	SCREW M4X0.7 L=8				4
31	SM6041200SP	SCREW M4 L=12				4
32	SM6062502TP	SCREW M6 L=25				1
33	SM6043552TN	SCREW M4 L=35				4
34	SM6081202TP	SCREW M8 L=12				2
35	SM8030312TP	SCREW M3 L=3				2
36	WP0841600SD	WASHER M8				2
37	WP0851216SC	WASHER 8.5X18.0X1.2				4
38	WS0820002KN	SPRING WASHER M8				4
39	SM4041055SP	SCREW				1
40	NM6080001SC	NUT M8X1.25				4
41	SL6061292TN	SCREW				2

# SHOE TONGUE DISCHARGE COMPONENTS

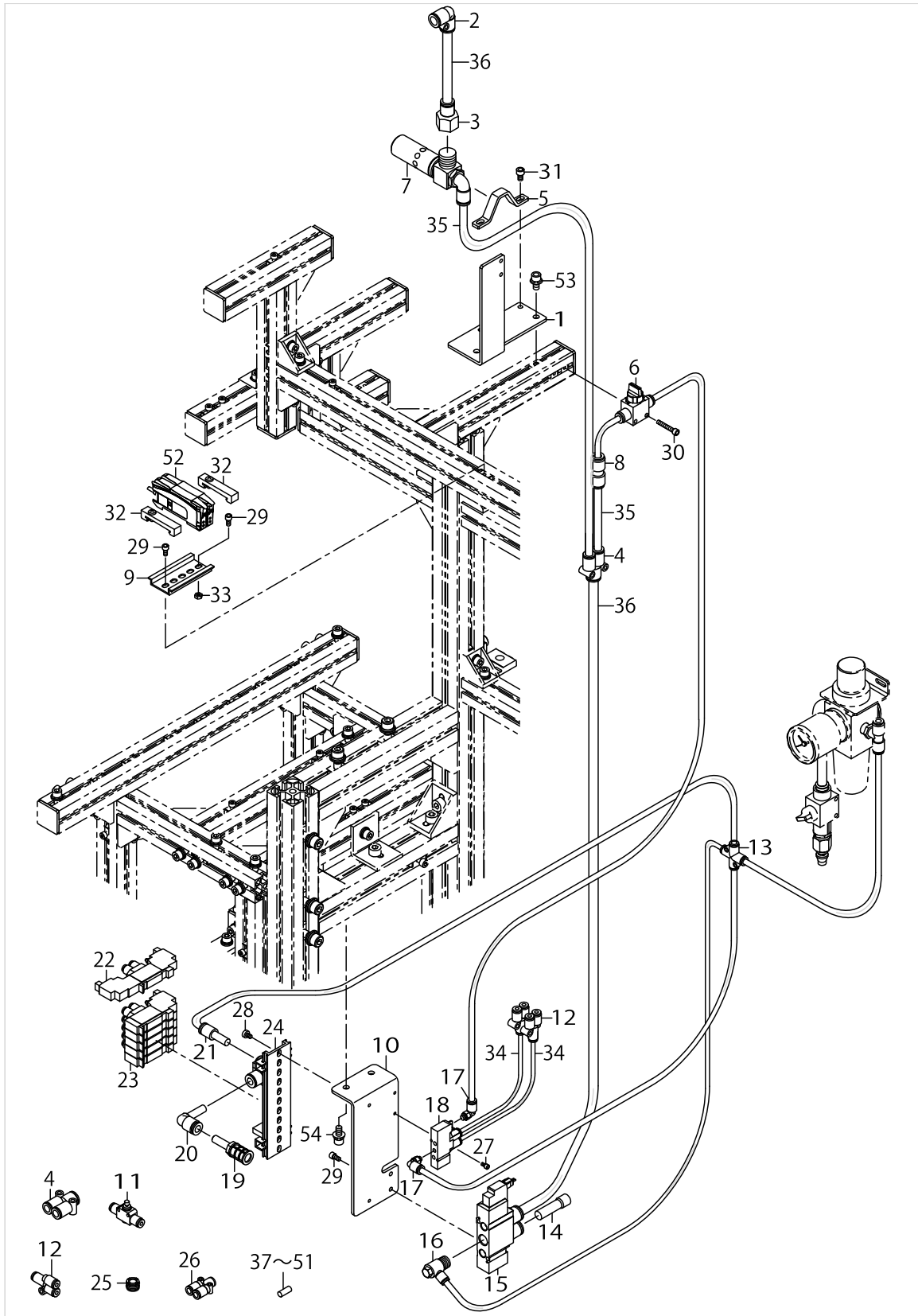


SHOE TONGUE DISCHARGE COMPONENTS

No.	Parts No.	Parts name	Remarks	Level	Cons	Qty
1	PJ304040504	UNION				1
2	PC010508000	SPEED CONTROLLER				1
3	PA1007504A0	AIR CYLINDER				1
4	40180555	CYLINDER_SUPPORT				1
5	40180557	PLATE				1
6	40180558	PUSHER				1
7	SM6030602TP	SCREW M3X0.5 L=6				2
8	SM6030802TP	SCREW M3X0.5 L=8				2
9	SM6040450TP	SCREW M4 L=4				1
10	SM6040602TP	SCREW M4X0.7 L=6				6
11	WP0451026SH	WASHER				4
12	NM6040001SC	NUT M4X0.7 TYPE1				1



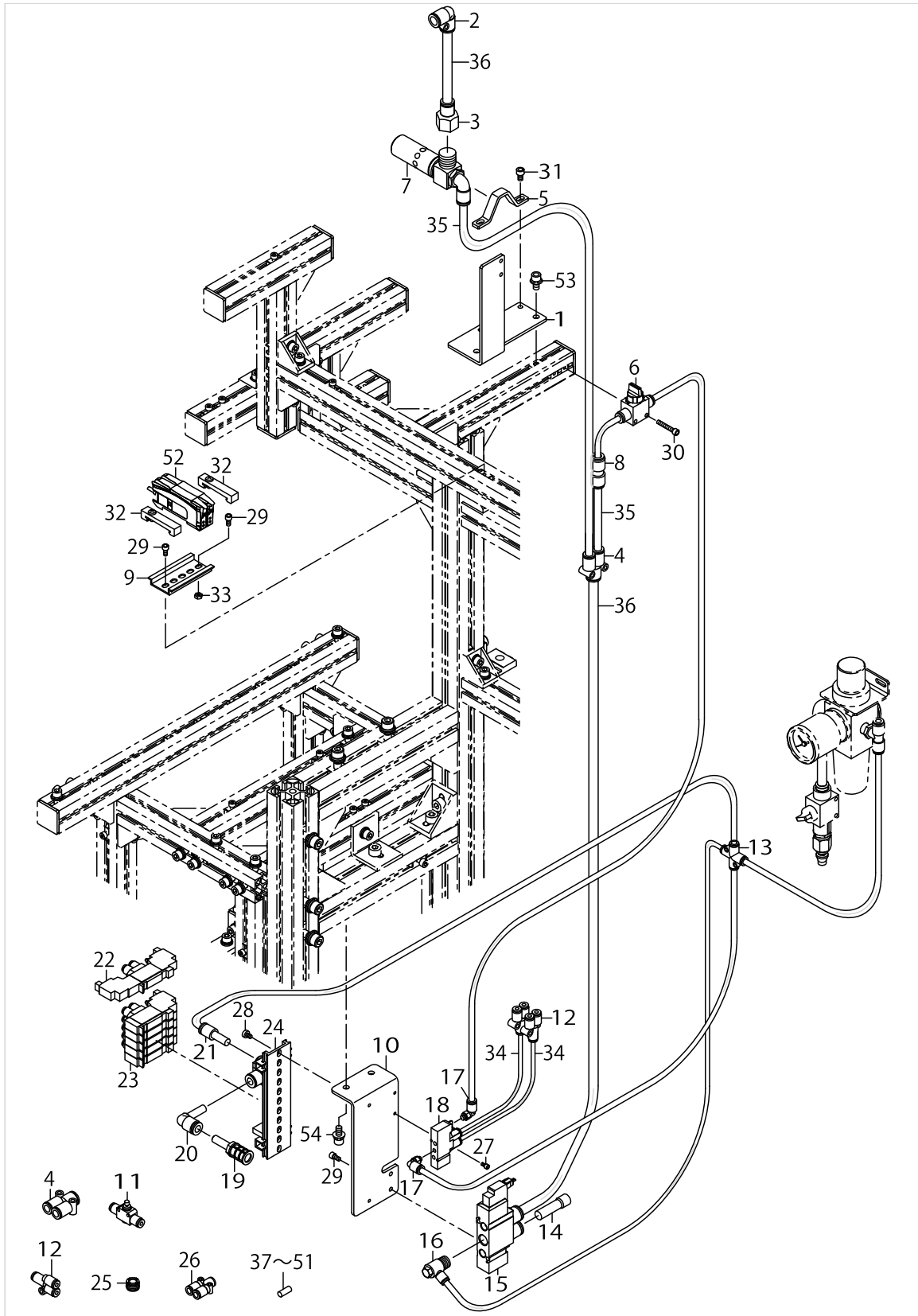
AIR COMPONENTS



AIR COMPONENTS

No.	Parts No.	Parts name	Remarks	Level	Cons	Qty
1	40180440	PLATE				1
2	PJ304100005	ELBOW				1
3	PJ301105301	FEMALE UNION				1
4	40069259	DIFFERENT BORE UNION Y				2
5	40180439	HOLDER				1
6	PV010006000	HAND VALVE				1
7	PV205302000	EJECTOR				1
8	PJ303080002	STRAIGHT				1
9	70005445	DIN RAIL				1
10	40180441	SOLENOID_VALVE_FITTING_BASE				1
11	PC012401000	SPEED CONTROLLER				1
12	PJ308040002	QUICK JOINT				3
13	PJ309060006	CROSS				1
14	PX950004000	PLUG				1
15	PV150218000	5-PORT SOLENOID VALVE				1
16	PJ309065203	ELBOW UNION				1
17	PJ304040505	UNION				2
18	PV200204000	5-PORT AIR OPERATE VALVE				1
19	PX050003000	SILENCER				1
20	PJ304080004	PLUG-IN ELBOW				1
21	PJ301060003	REDUCER				1
22	PV150217000	5-PORT SOLENOID VALVE				1
23	PV150209300	5-PORT SOLENOID VALVE				5
24	PV915005000	SOLENOID VALVE INSTALLING BASE				1
25	PV920008000	BUSH ASM				3
26	PJ308060007	UNION Y				1
27	SM6030602TP	SCREW M3X0.5 L=6				2
28	SM6040600SP	SCREW M4 L=6				2
29	SM6040802TP	SCREW M4X0.7 L=8				4
30	SM6042502TN	SCREW M4X0.7 L=25				2
31	SM6050802TP	SCREW M5X0.8 L=8				2
32	70005446	END PLATE				2
33	NM6040001SC	NUT M4X0.7 TYPE1				1
34	BT0400251EB	URETHANE TUBE BLACK 4X2.5				22.7
35	BT0800501EB	URETHANE TUBE BLACK 8X5				5.4
36	BT1000651EB	URETHANE TUBE BLACK 10X6.5				1.3
37	18035105	WIRE MARK (2)				4
38	18035709	WIRE MARK (8)				4
39	18035600	WIRE MARK (7)				4
40	18036608	WIRE MARK (17)				4
41	18037101	WIRE MARK (22)				4
42	18037804	WIRE MARK (29)				4
43	18038901	WIRE MARK (40)				8
44	18039008	WIRE MARK (41)				4
45	18039107	WIRE MARK (42)				4
46	18039206	WIRE MARK (43)				4
47	18039305	WIRE MARK (44)				4

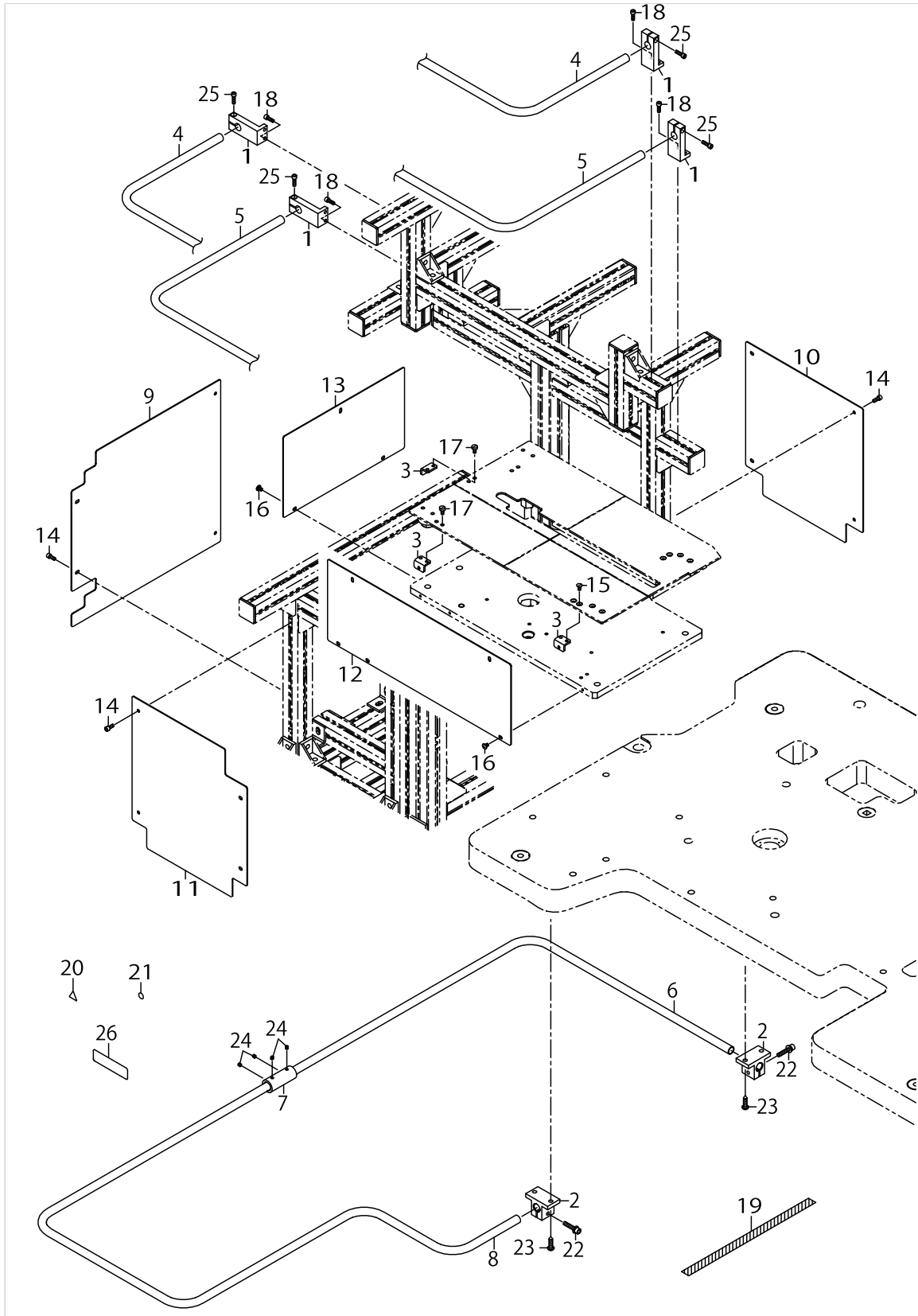
AIR COMPONENTS



AIR COMPONENTS

No.	Parts No.	Parts name	Remarks	Level	Cons	Qty
48	18039404	WIRE MARK (45)				4
49	18039503	WIRE MARK (46)				10
50	18039602	WIRE MARK (47)				10
51	18039701	WIRE MARK (48)				4
52	70005189	CLOTH SENSOR ASSY				1
53	SL6061292TN	SCREW				2
54	SL6061492TN	BOLT				2

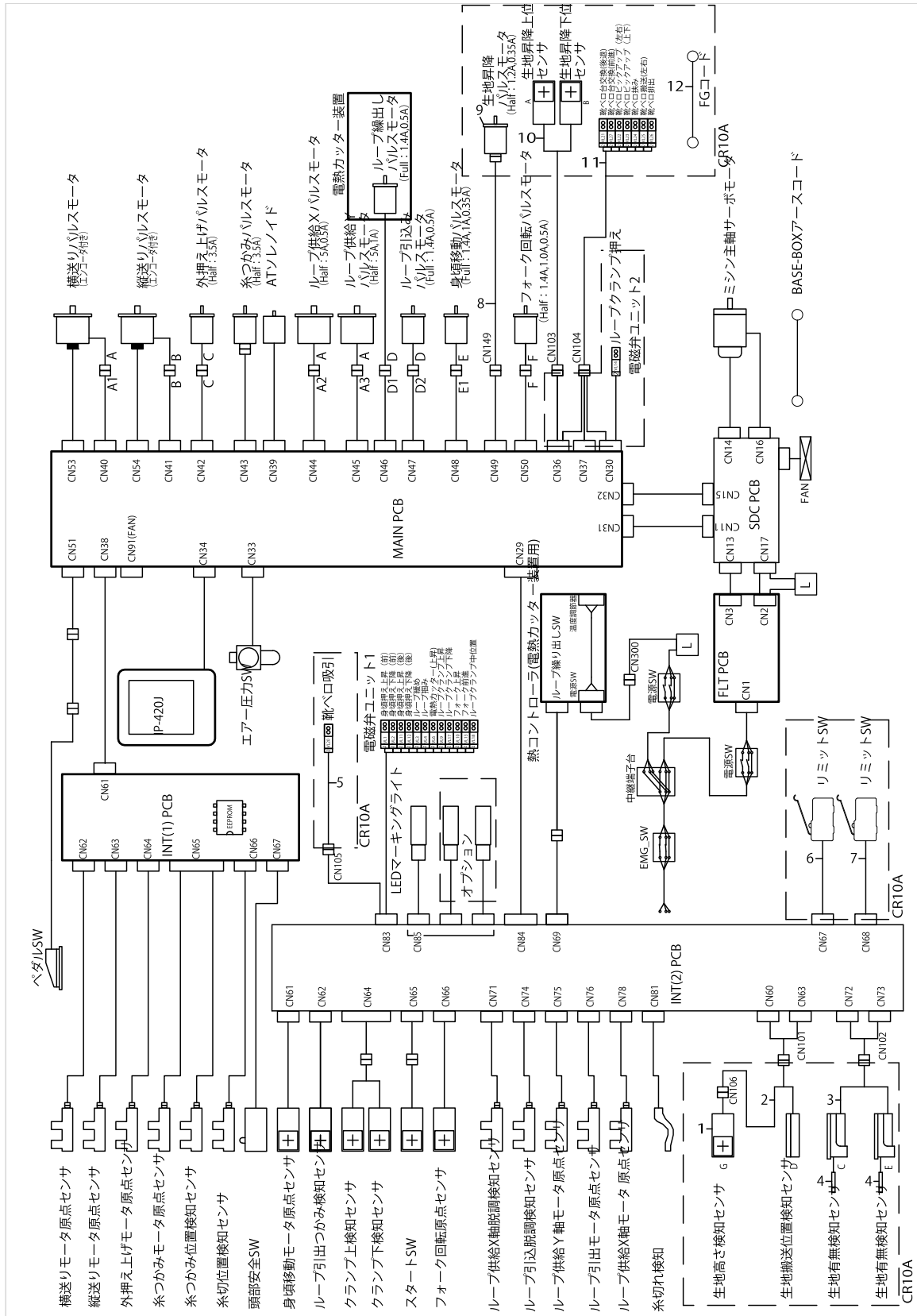
COVER COMPONENTS



## COVER COMPONENTS

No.	Parts No.	Parts name	Remarks	Level	Cons	Qty
1	40180640	SHAFT_SUPPORT				4
2	40182798	GUARD_SUPPORT				2
3	40180447	COVER_BRACKET				3
4	40180642	GUARD_MIDDLE_U				1
5	40180641	GUARD_MIDDLE_L				1
6	40182800	GUARD_REAR				1
7	40182803	BUSH				1
8	40182799	GUARD_FRONT				1
9	40180560	MIDDLE_COVER				1
10	40180561	REAR_COVER				1
11	40180559	FRONT_COVER				1
12	40180565	FRONT_COVER_B				1
13	40180567	LEFT_COVER_B				1
14	SM6041002TP	SCREW M4X0.7 L=10				12
15	SM1040800SP	SCREW				2
16	SM0040601SC	SCREW M4X0.7 L=6				8
17	SM6040800SP	SCREW				4
18	SM6041202TN	SCREW M4X0.7 L=12				8
19	40058951	AREA_CAUTION_LABEL				2
20	CM300200001	FINGER INJURY CAUTION LABEL (16)				1
21	E9567319000	EARTH MARK				1
22	SL6052592TN	SCREW M5 L=25				2
23	SK3512001SE	WOOD SCREW D=5.1 L=20				4
24	SM8040412TP	SCREW M4X4				4
25	SM6041402TN	SCREW M4X0.7 L=14				4
26	40183433	COMPLETE_NAME_LABEL				1

WIRING DIAGRAM

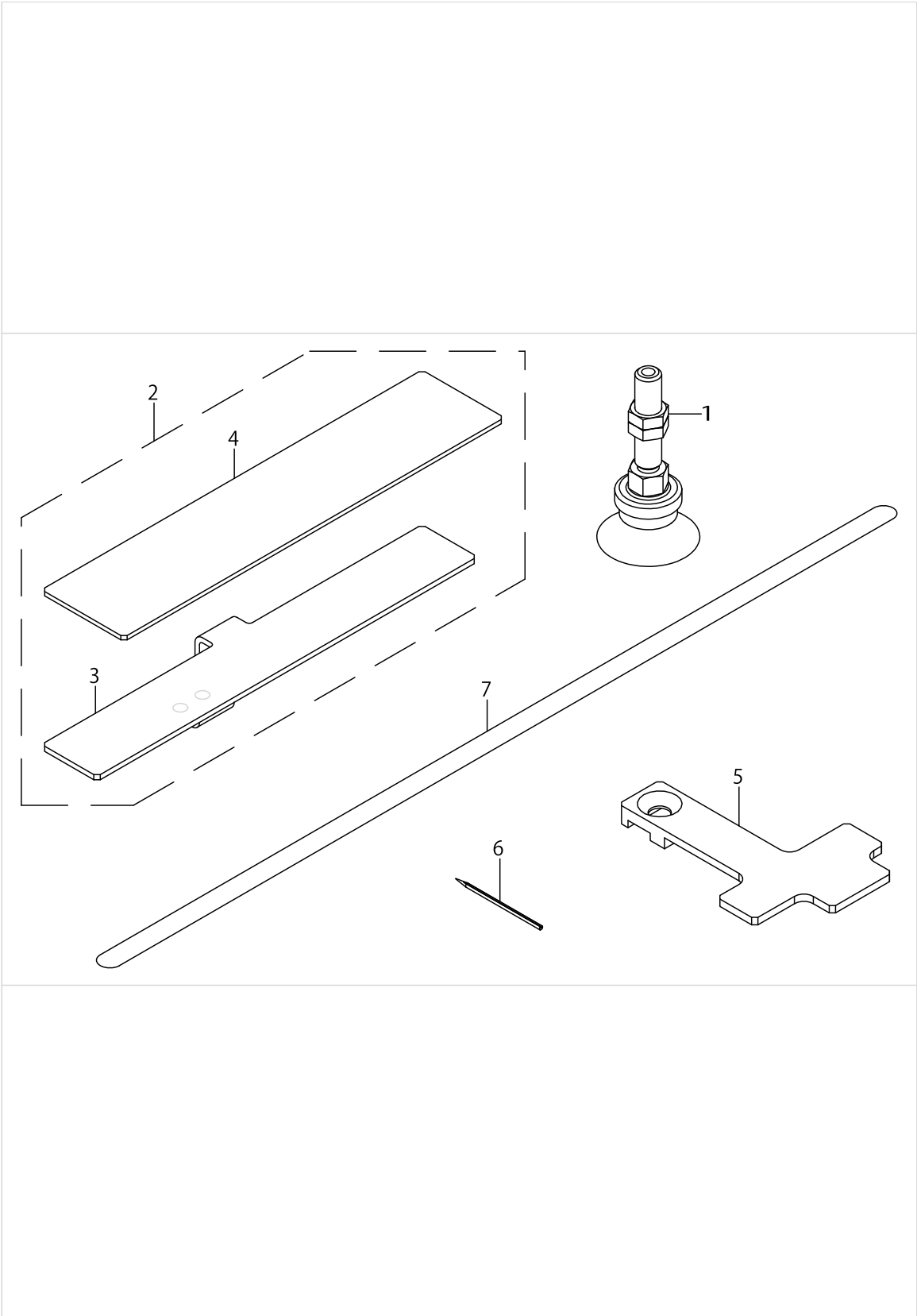


WIRING DIAGRAM

No.	Parts No.	Parts name	Remarks	Level	Cons	Qty
1	70005172	CLOTH HEIGHT SENSOR ASSY				1
2	40184245	SENSOR ASSY				1
3	70005189	CLOTH SENSOR ASSY				1
4	HD002820010	SENSOR				2
5	70005186	AIR SOLENOID VALVE CORD ASSY				1
6	40182373	LIMIT SWITCH A CORD ASSY				1
7	40182374	LIMIT SWITCH B CORD ASSY				1
8	40180085	LOOPLOOSEMOTORRELAYCORDASSY				1
9	40044473	ROLLER STACKER MOTOR				1
10	70005187	FEED MOTOR U/D SENSOR ASSY				1
11	70005185	AIR SOLENOID VALVE CORD ASSY				1
12	40182359	FG CORD ASSY				1



ACCESSORIE PARTS COMPONENTS



ACCESSORIE PARTS COMPONENTS

No.	Parts No.	Parts name	Remarks	Level	Cons	Qty
1	PX5000650A0	VACUUM PAD				2
2	40180584	LOWER_PLATE_S				1
3	40180585	LOWER_PLATE_A		*		1
4	40180586	PLATE		*		1
5	40180451	PRESSER_PLATE_S				1
6	40180554	NEEDLE				4
7	40039942	REFLECTION_SHEET				1

## HOW TO MAKE USE OF THIS PARTS LIST

- 1.As to "#01" and "#02" refer to the "Note" given at the bottom of the respective pages.
- 2.Codes on the "Qty" column
  - Each numeral indicates the number of parts required.
  - "0.1" and "2.5" indicate the length (in meters) of the respective parts.
- 3.Parentheses mean that the corresponding part is a subpart that constructs an assembly part.
- 4.Dotted lines on the Figures indicate assembly parts.
- 5.As to the parts with marks of "☆"(Consumable parts)and "◎"(optional parts)on the respective parts, it is recommended to prepare spares.

1. リストページの#01、#02の印は、ページ下の"注記"の説明を参照下さい。
2. 数量欄の数字は、個数を表し、0.1、2.5等の数値は、長さ（単位メートル）を表します。
3. 数量欄の（ ）は、組部品を構成している子部品であることを意味します。
4. イラストページの-----枠は、組構成であることを意味します。
5. リストページの"☆"（消耗部品）、"◎"（オプション部品）の印が付いた部品は、予備を準備しておくことをお勧めします。

# NUMERICAL INDEX OF PARTS

PART NO	PAGE	REF NO.	PART NO	PAGE	REF NO.	PART NO	PAGE	REF NO.
18035105	16	37~51	40180459	12	17	40180555	14	4
18035600	16	37~51	40180460	12	4	40180557	14	5
18035709	16	37~51	40180461	2	1	40180558	14	6
18036608	16	37~51	40180462	2	2	40180559	20	11
18037101	16	37~51	40180463	2	7	40180560	20	9
18037804	16	37~51	40180464	4	1	40180561	20	10
18038901	16	37~51	40180465	2	8	40180565	20	12
18039008	16	37~51	40180466	2	6	40180567	20	13
18039107	16	37~51	40180468	4	2	40180568	6	27
18039206	16	37~51	40180469	4	11	40180582	4	6
18039305	16	37~51	40180470	4	17	40180583	4	5
18039404	18	37~51	40180471	4	16	40180584	24	2
18039503	18	37~51	40180472	4	12	40180585	24	3
18039602	18	37~51	40180473	2	9	40180586	24	4
18039701	18	37~51	40180474	4	4	40180604	2	5
20104402	8	1	40180475	2	4	40180606	4	13
40010477	4	22	40180476	2	3	40180608	4	14
40039942	24	7	40180477	4	3	40180610	4	8
40044473	4	15	40180479	6	24	40180611	4	24
40044473	22	9	40180482	6	28	40180612	4	21
40058951	20	19	40180484	6	15	40180614	6	18
40067813	8	8	40180485	6	19	40180617	6	1
40069259	16	4	40180486	6	3	40180618	6	26
40090637	8	10	40180487	6	5	40180619	6	16
40091171	8	2	40180488	6	7	40180621	8	22
40091172	8	4	40180489	6	6	40180623	8	25
40091173	8	6	40180490	6	2	40180624	8	23
40111891	8	3	40180491	6	25	40180627	8	28
40180085	22	8	40180492	6	4	40180628	8	31
40180439	16	5	40180493	8	26	40180631	12	3
40180440	16	1	40180496	8	27	40180640	20	1
40180441	16	10	40180497	8	38	40180641	20	5
40180445	12	1	40180498	8	39	40180642	20	4
40180446	12	6	40180499	8	40	40182359	22	12
40180447	20	3	40180500	8	30	40182373	6	10
40180448	12	20	40180501	8	34	40182373	22	6
40180449	12	21	40180502	8	32	40182374	6	11
40180451	24	5	40180503	8	24	40182374	22	7
40180452	12	13	40180504	8	20	40182744	8	37
40180453	12	2	40180505	8	14	40182798	20	2
40180454	12	23	40180506	8	16	40182799	20	8
40180455	12	5	40180507	8	18	40182800	20	6
40180456	12	18	40180508	8	15	40182803	20	7
40180457	12	9	40180554	8	41	40183357	6	9
40180458	12	7	40180554	24	6	40183358	6	14

NUMERICAL INDEX OF PARTS

PART NO	PAGE	REF NO.	PART NO	PAGE	REF NO.	PART NO	PAGE	REF NO.
40183359	6	13	PJ303080002	16	8	SM1040800SP	12	26
40183360	6	12	PJ304040301	8	35	SM1040800SP	20	15
40183433	20	26	PJ304040504	12	12	SM1051052TN	8	42
40184245	12	16	PJ304040504	14	1	SM1051052TN	12	19
40184245	22	2	PJ304040505	16	17	SM4041055SP	12	39
70005172	8	21	PJ304080004	16	20	SM4050855SP	8	45
70005172	22	1	PJ304085204	8	33	SM4850455SP	10	52
70005185	22	11	PJ304100005	16	2	SM6021002TN	6	36
70005186	22	5	PJ308040002	16	12	SM6030402TN	2	13
70005187	4	18	PJ308060007	16	26	SM6030402TP	10	56
70005187	22	10	PJ309060006	16	13	SM6030600SP	12	27
70005189	18	52	PJ309065203	16	16	SM6030602TP	4	25
70005189	22	3	PV010006000	16	6	SM6030602TP	6	35
70005445	16	9	PV150209300	16	23	SM6030602TP	14	7
70005446	16	32	PV150217000	16	22	SM6030602TP	16	27
BT0400251EB	16	34	PV150218000	16	15	SM6030800SP	4	26
BT0800501EB	16	35	PV200204000	16	18	SM6030800SP	12	28
BT1000651EB	16	36	PV205302000	16	7	SM6030802TP	4	27
CM300200001	20	20	PV915005000	16	24	SM6030802TP	10	60
CS0800881TP	4	7	PV920008000	16	25	SM6030802TP	14	8
E9567319000	20	21	PX050003000	16	19	SM6031002TP	4	28
HD002820010	8	17	PX5000650A0	24	1	SM6031602TP	10	53
HD002820010	12	10	PX950004000	16	14	SM6040450TP	14	9
HD002820010	22	4	PX950016000	12	15	SM6040600SP	2	14
NM6040001SC	10	51	RC0150001KP	4	9	SM6040600SP	4	32
NM6040001SC	14	12	RC0560711KP	4	23	SM6040600SP	16	28
NM6040001SC	16	33	RC1200001KP	8	29	SM6040602TN	4	29
NM6080001SC	6	21	SB106000200	4	19	SM6040602TN	10	59
NM6080001SC	12	40	SB706000100	4	20	SM6040602TP	14	10
NM6160001SC	6	17	SB708000100	4	10	SM6040800SP	2	10
PA060080200	8	36	SB716000100	6	8	SM6040800SP	12	29
PA1007504A0	14	3	SK3512001SE	20	23	SM6040800SP	20	17
PA1025001A0	12	14	SL6040892TN	12	24	SM6040802TN	12	30
PA1505004A0	8	11	SL6051092TN	6	29	SM6040802TP	2	11
PA1535001A0	8	19	SL6052592TN	20	22	SM6040802TP	8	46
PA160102000	12	22	SL6061292TN	4	36	SM6040802TP	16	29
PA2025003A0	6	23	SL6061292TN	6	41	SM6041002TN	6	39
PA900063000	6	22	SL6061292TN	10	57	SM6041002TN	10	58
PC010508000	8	12	SL6061292TN	12	41	SM6041002TP	4	35
PC010508000	12	11	SL6061292TN	18	53	SM6041002TP	20	14
PC010508000	14	2	SL6061492TN	6	38	SM6041200SP	12	31
PC012401000	16	11	SL6061492TN	18	54	SM6041202TN	20	18
PC015108000	6	20	SL6082092TN	6	40	SM6041402TN	6	30
PJ301060003	16	21	SL6082592TN	12	25	SM6041402TN	20	25
PJ301105301	16	3	SM0040601SC	20	16	SM6041602TP	8	43

## NUMERICAL INDEX OF PARTS

PART NO	PAGE	REF NO.
SM6042002TP	8	13
SM6042502TN	16	30
SM6043552TN	12	33
SM6050800SP	2	12
SM6050800SP	6	31
SM6050802TP	8	47
SM6050802TP	16	31
SM6051002TP	6	32
SM6052502TP	6	33
SM6054002TN	8	44
SM6060800SP	10	48
SM6062502TP	12	32
SM6081202TP	12	34
SM6087002TN	12	8
SM8030312TP	4	30
SM8030312TP	10	54
SM8030312TP	12	35
SM8030412TP	4	34
SM8040412TP	4	31
SM8040412TP	10	49
SM8040412TP	20	24
SM8050412TP	8	7
SM8050502TP	10	50
SM8050512TP	4	33
WP0451026SH	14	11
WP0651646SC	6	34
WP0841600SD	12	36
WP0851216SC	12	37
WS0820002KN	12	38