

MODEL : MF-7900D-H25

List No : 1671-00

# PARTS LIST

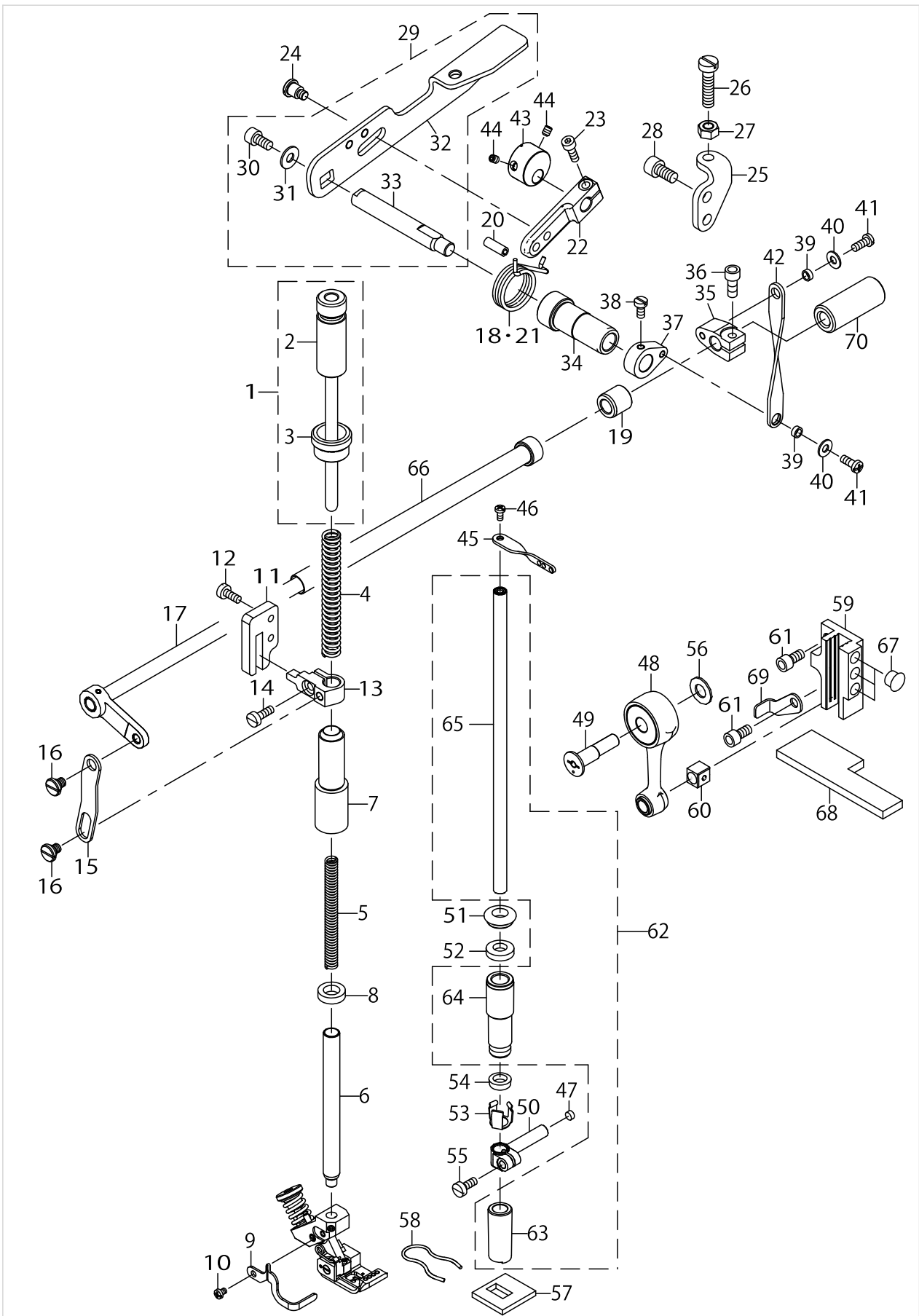
Published:09/10/2017

## CONTENTS

---

NEEDLE BAR & PRESSER COMPONENTS.....	1
SPREADER COMPONENTS.....	5
GAUGE COMPONENTS.....	7
GAUGE COMPONENTS (FOR H25/UT59).....	9
HOW TO MAKE USE OF THIS PARTS LIST .....	11

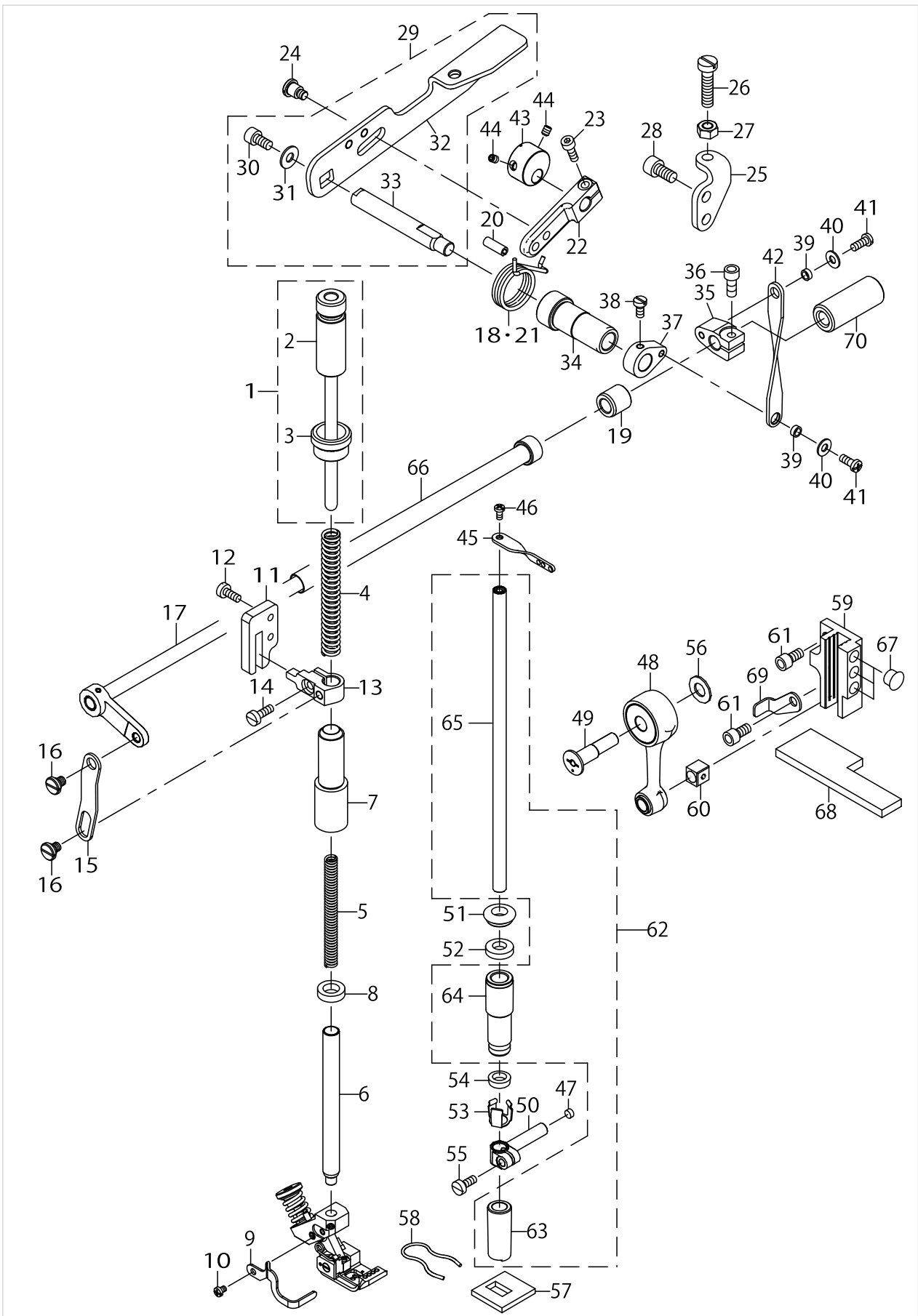
NEEDLE BAR & PRESSER COMPONENTS



NEEDLE BAR & PRESSER COMPONENTS

No.	Parts No.	Parts name	Remarks	Level	Cons	Qty
1	40070574	ADJ_SCREW_P_B_NUT_ASSY				1
2	40070573	ADJ_SCREW_P_B_ASSY		*		1
3	13313101	LOCKING NUT		*		1
4	13313309	SPRING PRESSER BAR A				1
5	40158697	SPRING_PRESSER_BAR_B				1
6	40158695	PRESSER_BAR				1
7	40156616	BUSHING_PRESSER_BAR				1
8	13315908	OIL SEAL				1
9	40158697	FINGER_GUARD				1
10	SM4030455SP	SCREW				1
11	13313804	GUIDE PLATE				1
12	SM6041000SP	SCREW M4 L=10				2
13	70001485	PRESSER_BAR_BRACKET				1
14	SM6041200SP	SCREW M4 L=12				1
15	13314109	LINK				1
16	SD0700206TP	SHOULDER SCREW				2
17	40078307	ASSY_LIFTER_SHAFT_DRY				1
18	13315205	SPRING LIFTER LEVER				1
19	70001486	BUSHING_LIFTER_FRONT				1
20	PS0500142KP	SPRING PIN				1
21	70001498	SPRING_LIFTER_LEVER				1
22	70001494	TENSION_RELEASE_LEVER				1
23	SM6041202TP	SCREW M4X0.7 L=12				1
24	SD0700586TP	SHOULDER SCREW				1
25	70001495	LIFTER_LEVER_STOPPER				1
26	SM6062550TP	SCREW M6 L=25				1
27	NM6060001CP	NUT M6				1
28	SM6061202TP	SCREW M6 L=12				2
29	70001487	LIFTER_LEVER_ASSY				1
30	SM6051002TP	SCREW M5X0.8 L=10		*		1
31	WP0551016SH	WASHER 5.5X13X1		*		1
32	70001488	LIFTER_LEVER		*		1
33	70001489	LIFTER_LEVER_SHAFT		*		1
34	70001490	BUSHING_LIFTER_LEVER				1
35	70001478	LIFTER_SHAFT_LEVER				1
36	SM6051202TP	SCREW M5X0.8 L=12				1
37	70001477	LIFTER_LEVER_COLLAR				1
38	SM6040800SP	SCREW				1
39	70001491	SPACER				2
40	WP0450826SC	WASHER 4.5X10X0.8				2
41	SM4041055SP	SCREW				2
42	70001492	LIFTER_LEVER_LINK				1
43	70001493	MINUTES_LIFTING_COLLAR				1
44	SM8040512TP	SCREW				2
45	13326806	NEEDLE BAR EYELET				1
46	SM4030855SN	SCREW M3 L=8.0				1
47	40078293	PLUG				1

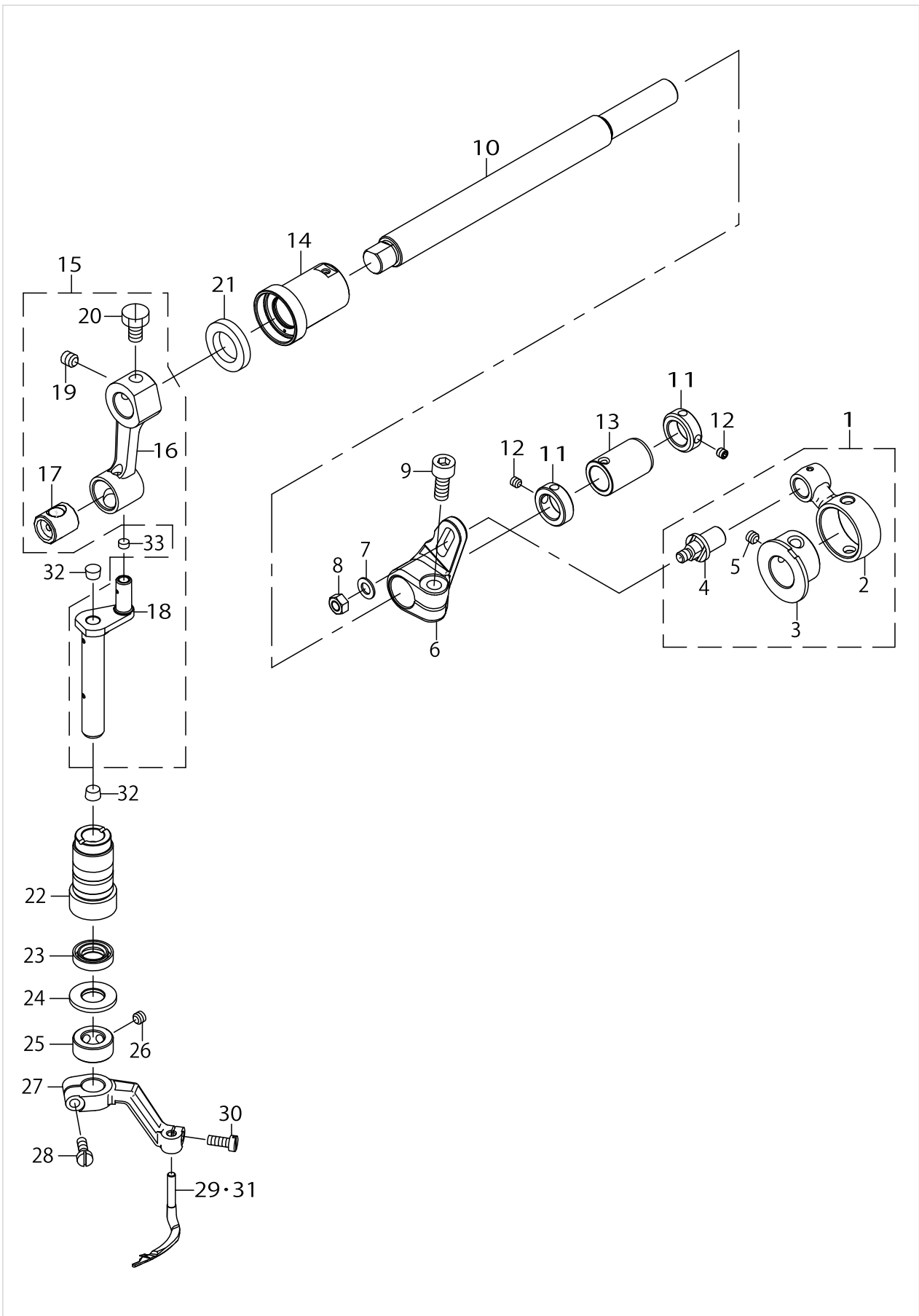
NEEDLE BAR & PRESSER COMPONENTS



## NEEDLE BAR & PRESSER COMPONENTS

No.	Parts No.	Parts name	Remarks	Level	Cons	Qty
48	70001465	ASSY_NEEDLE_CRANK_ROD				1
49	70001462	ECCENTRIC_PIN_DRY				1
50	40078292	NEEDLE_BAR_CLAMP				1
51	40078305	BUSHING_NB_U_PRESSER_A				1
52	40078302	BUSHING_NB_U_FELT_A				1
53	40078306	BUSHING_NB_U_PRESSER_B				1
54	40078303	BUSHING_NB_U_FELT_B				1
55	SM6041000SP	SCREW M4 L=10				1
56	40078291	WASHER				1
57	40078301	BUSHING_NB_L_FELT				1
58	40078304	BUSHING_NB_L_PRESSER				1
59	70001463	NEEDLE_BAR_GUIDE				1
60	40078295	SLIDE_BLOCK				1
61	SM6051202TP	SCREW M5X0.8 L=12				3
62	40078317	ASSY_BUSHING_NB_DRY				1
63	40078299	BUSHING_NB_LOWER		*		1
64	40078300	BUSHING_NB_UPPER		*		1
65	40078296	NEEDLE BAR ASSY		*		1
66	40078320	PIPE_ASSY				1
67	TA0850604R0	RUBBER PLUG				4
68	40087083	FELT				1
69	40087101	FELT PRESSER				1
70	70001500	BUSHING_LIFTER_REAR				1

SPREADER COMPONENTS

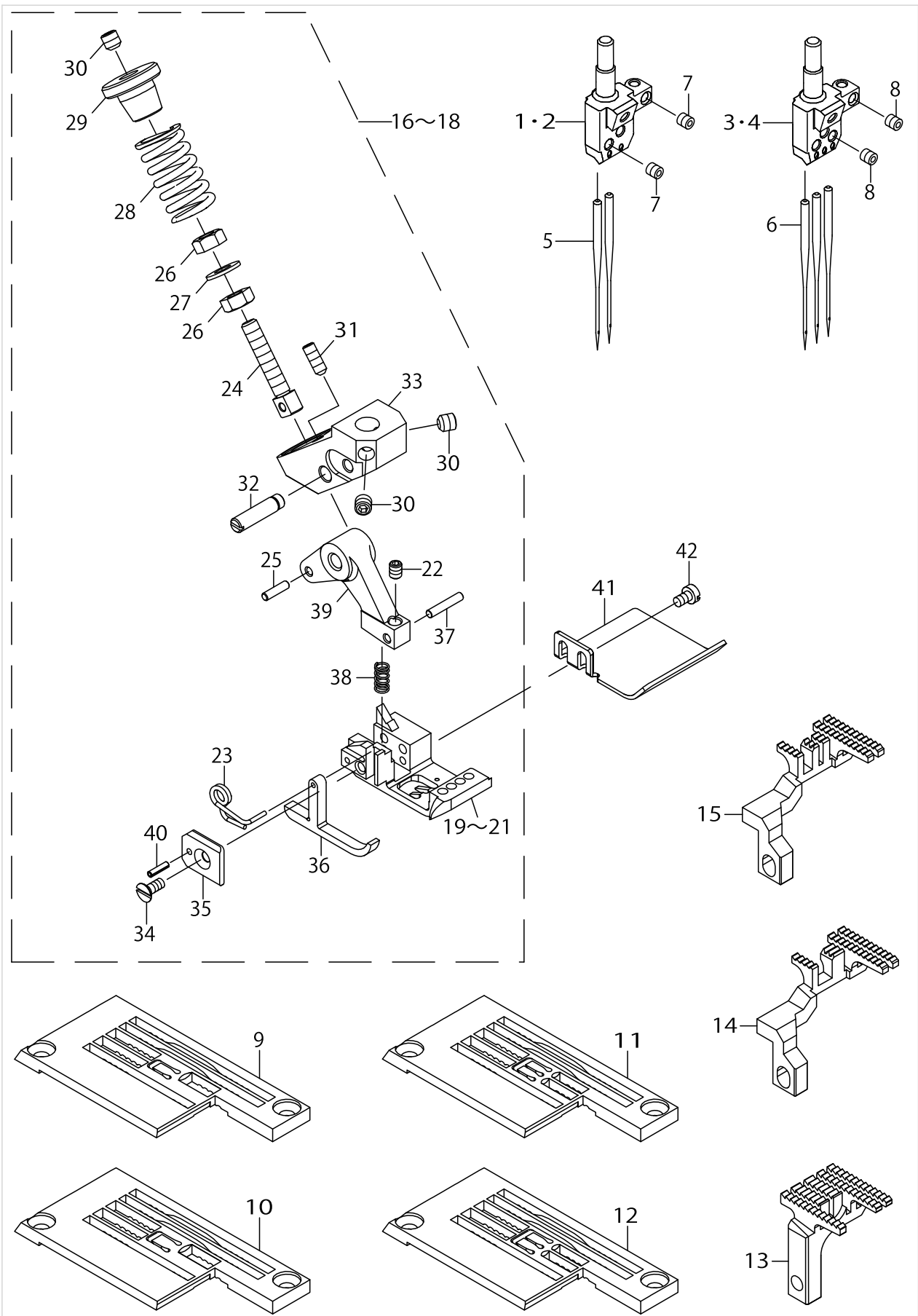


SPREADER COMPONENTS

No.	Parts No.	Parts name	Remarks	Level	Cons	Qty
1	40078318	ASSY_UPPPER_LPR_MECH				1
2	40078319	CONNROD_FOR_UPPER_LPR		*		1
3	13328000	UPPER LOOPER ECCENTRIC		*		1
4	13328208	STUD		*		1
5	SM8050412TP	SCREW M5 L=4		*		2
6	70001555	DRIVING_ARM				1
7	WP0550800SP	WASHER 5.5X10X0.8				1
8	NM6050001SC	NUT M5X0.8 TYPE1				1
9	SM6061402TP	SCREW M6 L=14				1
10	70001561	UPPER_LOOPER_SHAFT_DRY				1
11	13399209	COLLAR				2
12	SM8040412TP	SET SCREW M4 L=4				4
13	13329008	BUSHING REAR				1
14	70001562	BUSHING_FRONT_DRY				1
15	40158702	ASSY_UPPER_LPR_MECH_2				1
16	40078312	CRANK_ROD		*		1
17	40078313	UPPER_LOOPER_ROCKER		*		1
18	40158703	U.L_SHAFT_VERTICAL		*		1
19	SM8060612TP	SCREW M6 L=6		*		1
20	SM9061050TP	SCREW M6 L=10		*		1
21	40004606	OIL SEAL				1
22	40158701	BUSHING VERTICAL				1
23	13338900	OIL SEAL				1
24	WP1022016SH	WASHER				1
25	CS1000881TP	THRUST COLLAR				1
26	SM8050412TP	SCREW M5 L=4				2
27	40158704	UPPER LOOPER HOLDER				1
28	SM6041200SP	SCREW M4 L=12				1
29	70001556	UPPER_LOOPER	EXCEPT TYPE TURKEY (UT37A,UT57A)			1
30	SM6041000SP	SCREW M4 L=10				1
31	70001563	UPPER_LOOPER	TYPE TURKEY (UT37A,UT57A)			1
32	TA0600401R0	PLUG				1
33	40078293	PLUG				1



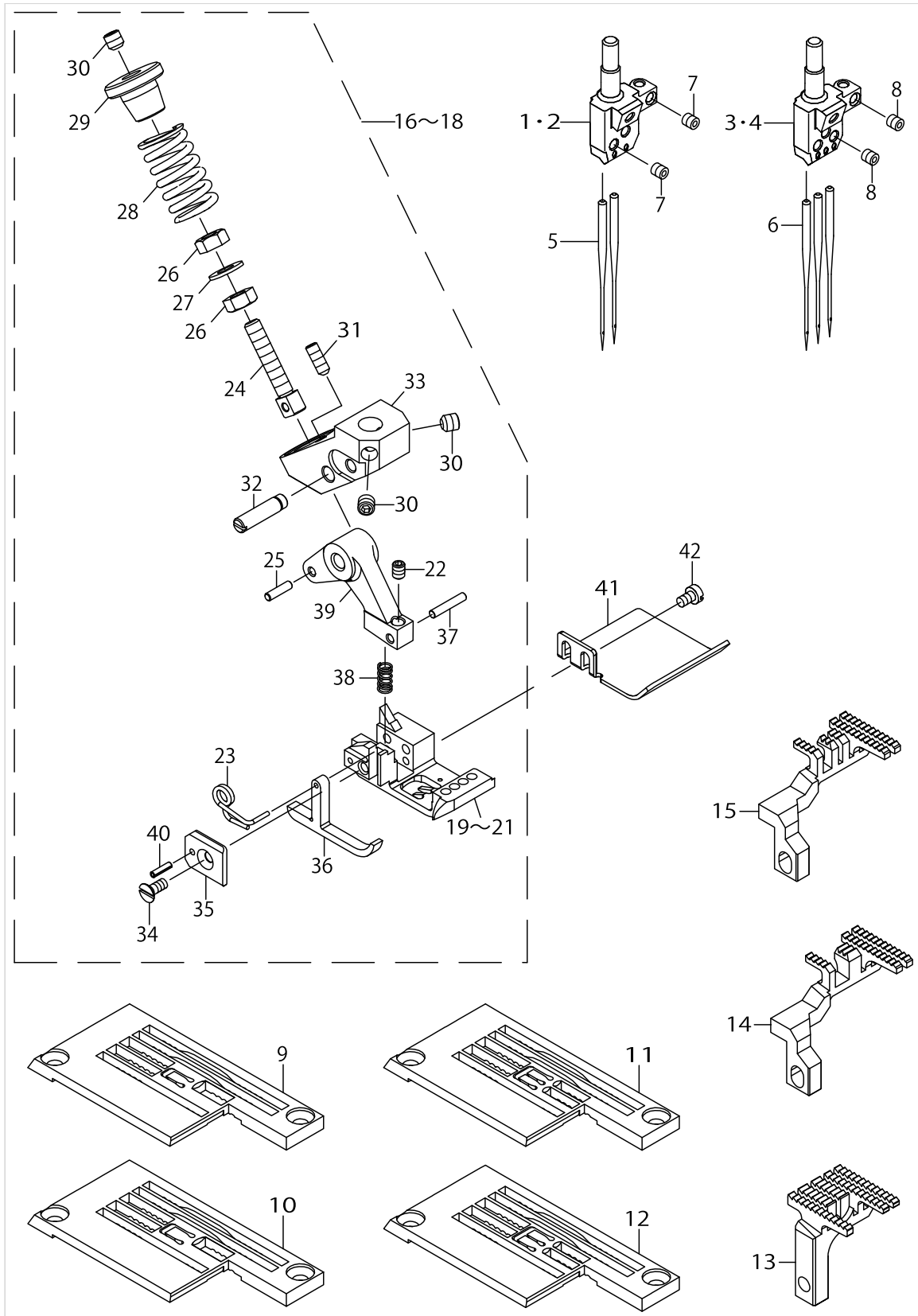
GAUGE COMPONENTS



GAUGE COMPONENTS

No.	Parts No.	Parts name	Remarks	Level	Cons	Qty
1	13350004	NEEDLE_HEAD_32	FOR MF-7922D-H25-E32			1
2	13350103	NEEDLE_HEAD_40	FOR MF-7922D-H25-E40			1
3	13350301	NEEDLE_HEAD_56	FOR MF-7923D-H25-E56			1
4	13350400	NEEDLE_HEAD_64	FOR MF-7923D-H25-E64			1
5	MUY128S1000	NEEDLE	FOR MF-7922D-H25-E32, MF-7922D-H25-E40		☆	2
6	MUY128S1000	NEEDLE	FOR MF-7923D-H25-E56, MF-7923D-H25-E64		☆	3
7	SM8030312TP	SCREW M3 L=3	FOR MF-7922D-H25-E32, MF-7922D-H25-E40			3
8	SM8030312TP	SCREW M3 L=3	FOR MF-7923D-H25-E56, MF-7923D-H25-E64			4
9	40154171	THROAT_PLATE	FOR MF-7922D-H25-E32			1
10	40154172	THROAT_PLATE	FOR MF-7922D-H25-E40			1
11	40154173	THROAT_PLATE	FOR MF-7923D-H25-E56			1
12	40154174	THROAT_PLATE	FOR MF-7923D-H25-E64			1
13	40154175	MAIN_FEED_DOG				1
14	40154177	DIFF_FEED_DOG	FOR MF-7922D-H25-E32, MF-7922D-H25-E40			1
15	40154178	DIFF_FEED_DOG	FOR MF-7923D-H25-E56, MF-7923D-H25-E64			1
16	40158688	PRESSER_FOOT_ASSY	FOR MF-7922D-H25-E32			1
17	40158686	PRESSER_FOOT_ASSY	FOR MF-7922D-H25-E40			1
18	40158683	PRESSER_FOOT_ASSY	FOR MF-7923D-H25-E56, MF-7923D-H25-E64			1
19	40158700	PRESSER_FOOT_BUTTON	FOR MF-7922D-H25-E32	*		1
20	40158699	PRESSER_FOOT_BUTTON	FOR MF-7922D-H25-E40	*		1
21	40158698	PRESSER_FOOT_BUTTON	FOR MF-7923D-H25-E56, MF-7923D-H25-E64	*		1
22	SM8030412TP	SCREW		*		1
23	40070229	SPRING_L		*		1
24	40158672	ADJUST_SCREW¥n		*		1
25	40158673	PIN¥n		*		1
26	NM6040001SP	NUT M4X0.7		*		2
27	40158671	WASHER¥n		*		1
28	40158670	PRESSER_FOOT_SPRING¥n		*		1
29	40158669	ADJUST_NUT¥n		*		1
30	SM8040412TP	SET SCREW M4 L=4		*		3
31	SM8030802TP	SCREW M3X0.5 L=8		*		1
32	40158668	PIN_SCREW¥n		*		1
33	40158667	SLIDING_FOOT_BASE¥n		*		1
34	SM1850600SP	SCREW		*		1
35	40070227	GUIDE_PLATE		*		1
36	40070226	P_F_YIELDING_SECTION		*		1
37	13375209	PIVOT_PIN		*		1
38	13377106	SPRING		*		1
39	40158685	PRESSER_FOOT_HINGE¥n		*		1
40	PS0150065KP	SPRING PIN 1.5X6		*		1
41	40038064	FABRIC GUIDE	ACCESSORY PARTS			1
42	SM6850400SP	SCREW M2.5 L=4	ACCESSORY PARTS			2

GAUGE COMPONENTS (FOR H25/UT59)



GAUGE COMPONENTS (FOR H25/UT59)

No.	Parts No.	Parts name	Remarks	Level	Cons	Qty
1	13350004	NEEDLE_HEAD_32	FOR MF-7922D-H25-E32/UT59			1
2	13350103	NEEDLE_HEAD_40	FOR MF-7922D-H25-E40/UT59			1
3	13350301	NEEDLE_HEAD_56	FOR MF-7923D-H25-E56/UT59			1
4	13350400	NEEDLE_HEAD_64	FOR MF-7923D-H25-E64/UT59			1
5	MUY128S1000	NEEDLE	FOR MF-7922D-H25-E32/UT5-9, MF-7922D-H25-E40/UT59		☆	2
6	MUY128S1000	NEEDLE	FOR MF-7923D-H25-E56/UT5-9, MF-7923D-H25-E64/UT59		☆	3
7	SM8030312TP	SCREW M3 L=3	FOR MF-7922D-H25-E32/UT5-9, MF-7922D-H25-E40/UT59			3
8	SM8030312TP	SCREW M3 L=3	FOR MF-7923D-H25-E56/UT5-9, MF-7923D-H25-E64/UT59			4
9	40154171	THROAT_PLATE	FOR MF-7922D-H25-E32/UT59			1
10	40154172	THROAT_PLATE	FOR MF-7922D-H25-E40/UT59			1
11	40154173	THROAT_PLATE	FOR MF-7923D-H25-E56/UT59			1
12	40154174	THROAT_PLATE	FOR MF-7923D-H25-E64/UT59			1
13	40154175	MAIN_FEED_DOG				1
14	40154179	DIFF_FEED_DOG	FOR MF-7922D-H25-E32/UT5-9, MF-7922D-H25-E40/UT59			1
15	40154180	DIFF_FEED_DOG	FOR MF-7923D-H25-E56/UT5-9, MF-7923D-H25-E64/UT59			1
16	40158688	PRESSER_FOOT_ASSY	FOR MF-7922D-H25-E32/UT59			1
17	40158686	PRESSER_FOOT_ASSY	FOR MF-7922D-H25-E40/UT59			1
18	40158683	PRESSER_FOOT_ASSY	FOR MF-7923D-H25-E56/UT5-9, MF-7923D-H25-E64/UT59			1
19	40158700	PRESSER_FOOT_BOTTOM	FOR MF-7922D-H25-E32/UT59	*		1
20	40158699	PRESSER_FOOT_BOTTOM	FOR MF-7922D-H25-E40/UT59	*		1
21	40158698	PRESSER_FOOT_BOTTOM	FOR MF-7923D-H25-E56/UT5-9, MF-7923D-H25-E64/UT59	*		1
22	SM8030412TP	SCREW		*		1
23	40070229	SPRING_L		*		1
24	40158672	ADJUST_SCREW¥n		*		1
25	40158673	PIN¥n		*		1
26	NM6040001SP	NUT M4X0.7		*		2
27	40158671	WASHER¥n		*		1
28	40158670	PRESSER_FOOT_SPRING¥n		*		1
29	40158669	ADJUST_NUT¥n		*		1
30	SM8040412TP	SET SCREW M4 L=4		*		3
31	SM8030802TP	SCREW M3X0.5 L=8		*		1
32	40158668	PIN_SCREW¥n		*		1
33	40158667	SLIDING_FOOT_BASE¥n		*		1
34	SM1850600SP	SCREW		*		1
35	40070227	GUIDE_PLATE		*		1
36	40070226	P_F_YIELDING_SECTION		*		1
37	13375209	PIVOT_PIN		*		1
38	13377106	SPRING		*		1
39	40158685	PRESSER_FOOT_HINGE¥n		*		1
40	PS0150065KP	SPRING PIN 1.5X6		*		1
41	40038064	FABRIC GUIDE	ACCESSORY PARTS			1
42	SM6850400SP	SCREW M2.5 L=4	ACCESSORY PARTS			2

## HOW TO MAKE USE OF THIS PARTS LIST

1.As to "#01" and "#02" refer to the "Note" given at the bottom of the respective pages.

2.Codes on the "Qty" column

- Each numeral indicates the number of parts required.
- "0.1" and "2.5" indicate the length (in meters) of the respective parts.

3.Parentheses mean that the corresponding part is a subpart that constructs an assembly part.

4.Dotted lines on the Figures indicate assembly parts.

5.As to the parts with marks of "☆"(Consumable parts)and "◎"(optional parts)on the respective parts, it is recommended to prepare spares.

1. リストページの#01、#02の印は、ページ下の"注記"の説明を参照下さい。
2. 数量欄の数字は、個数を表し、0.1、2.5等の数値は、長さ（単位メートル）を表します。
3. 数量欄の（ ）は、組部品を構成している子部品であることを意味します。
4. イラストページの-----枠は、組構成であることを意味します。
5. リストページの"☆"（消耗部品）、"◎"（オプション部品）の印が付いた部品は、予備を準備しておくことをお奨めします。

# NUMERICAL INDEX OF PARTS

PART NO	PAGE	REF NO.	PART NO	PAGE	REF NO.	PART NO	PAGE	REF NO.
13313101	2	3	40078303	4	54	40158685	10	39
13313309	2	4	40078304	4	58	40158686	8	16~18
13313804	2	11	40078305	4	51	40158686	10	16~18
13314109	2	15	40078306	4	53	40158688	8	16~18
13315205	2	18·21	40078307	2	17	40158688	10	16~18
13315908	2	8	40078312	6	16	40158695	2	6
13326806	2	45	40078313	6	17	40158697	2	9
13328000	6	3	40078317	4	62	40158698	8	19~21
13328208	6	4	40078318	6	1	40158698	10	19~21
13329008	6	13	40078319	6	2	40158699	8	19~21
13338900	6	23	40078320	4	66	40158699	10	19~21
13350004	8	1·2	40087083	4	68	40158700	8	19~21
13350004	10	1·2	40087101	4	69	40158700	10	19~21
13350103	8	1·2	40154171	8	9	40158701	6	22
13350103	10	1·2	40154171	10	9	40158702	6	15
13350301	8	3·4	40154172	8	10	40158703	6	18
13350301	10	3·4	40154172	10	10	40158704	6	27
13350400	8	3·4	40154173	8	11	70001462	4	49
13350400	10	3·4	40154173	10	11	70001463	4	59
13375209	8	37	40154174	8	12	70001465	4	48
13375209	10	37	40154174	10	12	70001477	2	37
13377106	8	38	40154175	8	13	70001478	2	35
13377106	10	38	40154175	10	13	70001485	2	13
13399209	6	11	40154177	8	14	70001486	2	19
40004606	6	21	40154178	8	15	70001487	2	29
40038064	8	41	40154179	10	14	70001488	2	32
40038064	10	41	40154180	10	15	70001489	2	33
40070226	8	36	40156616	2	7	70001490	2	34
40070226	10	36	40158667	8	33	70001491	2	39
40070227	8	35	40158667	10	33	70001492	2	42
40070227	10	35	40158668	8	32	70001493	2	43
40070229	8	23	40158668	10	32	70001494	2	22
40070229	10	23	40158669	8	29	70001495	2	25
40070573	2	2	40158669	10	29	70001498	2	18·21
40070574	2	1	40158670	8	28	70001500	4	70
40078291	4	56	40158670	10	28	70001555	6	6
40078292	4	50	40158671	8	27	70001556	6	29·31
40078293	2	47	40158671	10	27	70001561	6	10
40078293	6	33	40158672	8	24	70001562	6	14
40078295	4	60	40158672	10	24	70001563	6	29·31
40078296	4	65	40158673	8	25	CS1000881TP	6	25
40078299	4	63	40158673	10	25	MUY128S1000	8	6
40078300	4	64	40158683	8	16~18	MUY128S1000	10	6
40078301	4	57	40158683	10	16~18	NM6040001SP	8	26
40078302	4	52	40158685	8	39	NM6040001SP	10	26

# NUMERICAL INDEX OF PARTS

PART NO	PAGE	REF NO.	PART NO	PAGE	REF NO.
NM6050001SC	6	8	WP1022016SH	6	24
NM6060001CP	2	27			
PS0150065KP	8	40			
PS0150065KP	10	40			
PS0500142KP	2	20			
SD0700206TP	2	16			
SD0700586TP	2	24			
SM1850600SP	8	34			
SM1850600SP	10	34			
SM4030455SP	2	10			
SM4030855SN	2	46			
SM4041055SP	2	41			
SM6040800SP	2	38			
SM6041000SP	2	55			
SM6041000SP	4	55			
SM6041000SP	6	30			
SM6041200SP	2	14			
SM6041200SP	6	28			
SM6041202TP	2	23			
SM6051002TP	2	30			
SM6051202TP	2	61			
SM6051202TP	4	61			
SM6061202TP	2	28			
SM6061402TP	6	9			
SM6062550TP	2	26			
SM6850400SP	8	42			
SM6850400SP	10	42			
SM8030312TP	8	8			
SM8030312TP	10	8			
SM8030412TP	8	22			
SM8030412TP	10	22			
SM8030802TP	8	31			
SM8030802TP	10	31			
SM8040412TP	6	12			
SM8040412TP	8	30			
SM8040412TP	10	30			
SM8040512TP	2	44			
SM8050412TP	6	26			
SM8060612TP	6	19			
SM9061050TP	6	20			
TA0600401R0	6	32			
TA0850604R0	4	67			
WP0450826SC	2	40			
WP0550800SP	6	7			
WP0551016SH	2	31			