

MODEL : LBH-1796A (搬送補助クランプ装置)

List No : 1663-00

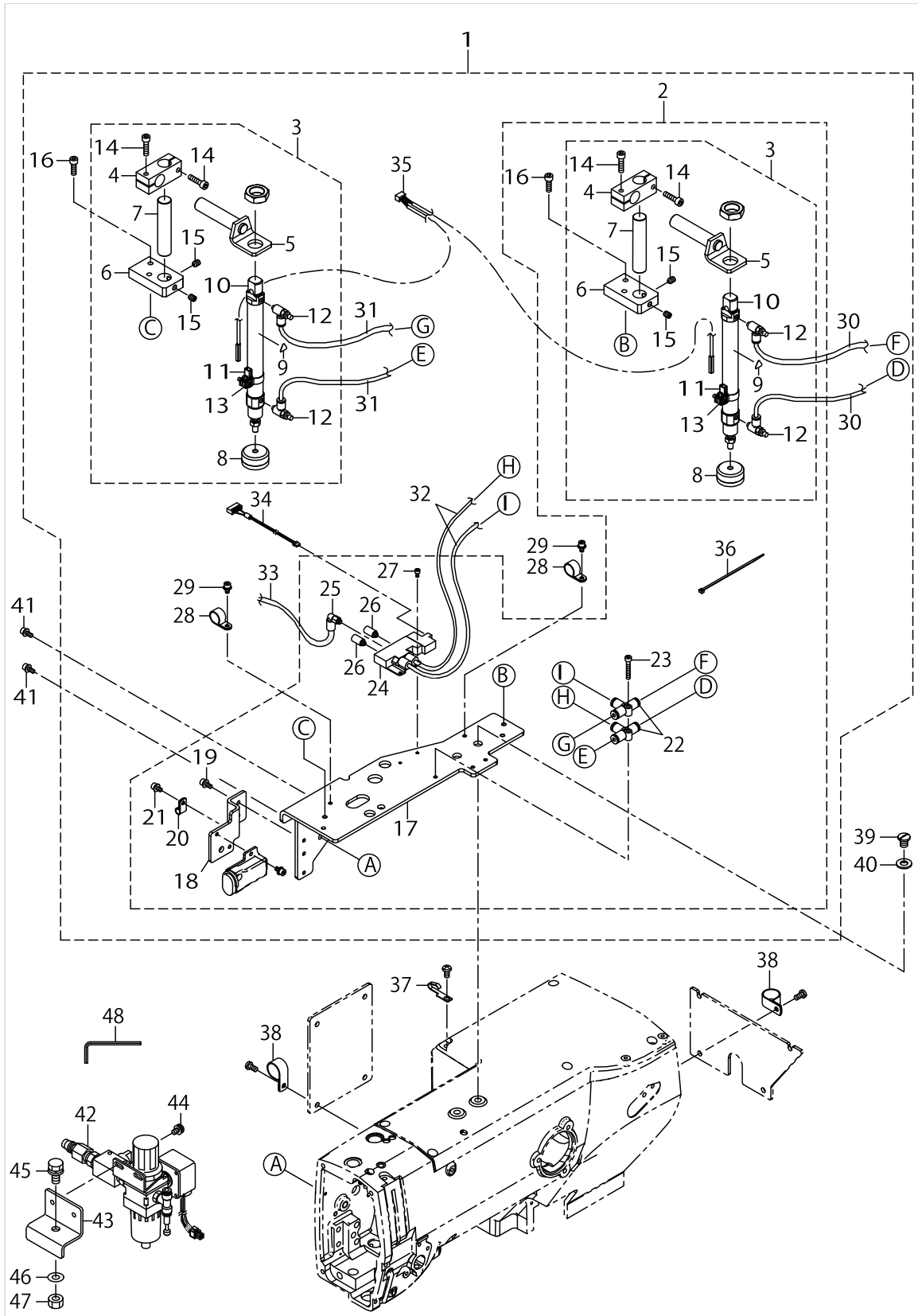
PARTS LIST

Published:09/10/2017

CONTENTS

| | |
|--|---|
| AUXILIARY CLAMP DEVICE | 1 |
| HOW TO MAKE USE OF THIS PARTS LIST | 5 |

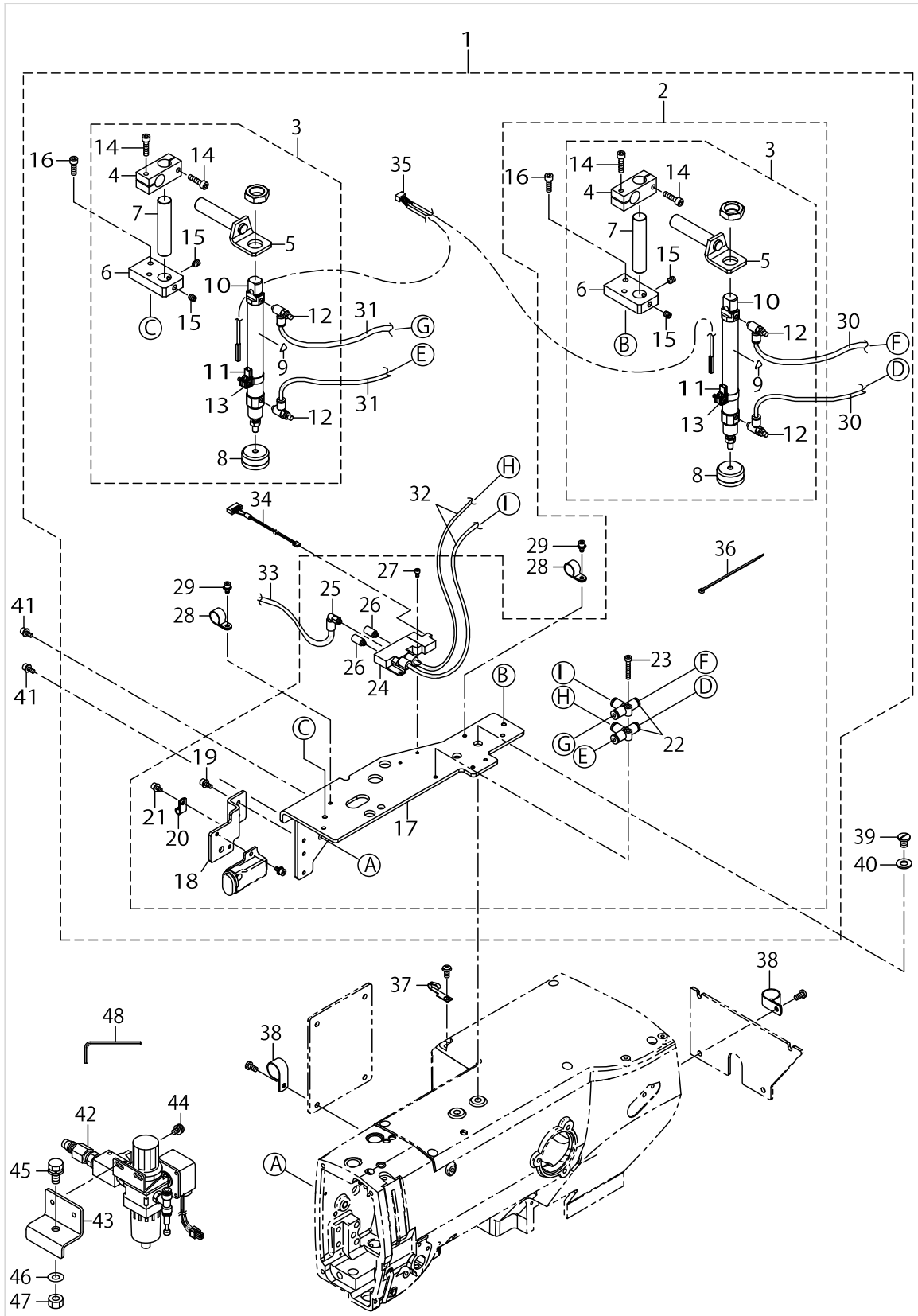
AUXILIARY CLAMP DEVICE



AUXILIARY CLAMP DEVICE

| No. | Parts No. | Parts name | Remarks | Level | Cons | Qty |
|-----|-------------|------------------------------|---------|-------|------|------|
| 1 | 40155454 | AUXILIARY CLAMP DEVICE ASSY | | | | 1 |
| 2 | 40154437 | AUXILIARY CLAMP ASSY | | * | | 1 |
| 3 | 40154132 | AUXILIARY CLAMP ASSY | | * | | 2 |
| 4 | 40039743 | CLOTH_LENGTHEN_BRACKET_D | | * | | 1 |
| 5 | 40039744 | CLOTH_LENGTHEN_BKT_ASSY | | * | | 1 |
| 6 | 40154428 | SHAFT_BASE | | * | | 1 |
| 7 | 40154429 | SHAFT | | * | | 1 |
| 8 | 40154432 | PAD HOLDER ASSY | | * | | 1 |
| 9 | CM300200001 | ATTENTION SEAL | | * | | 1 |
| 10 | PA1609502A0 | AIR CYLINDER | | * | | 1 |
| 11 | PA900080000 | HOLDER SET | | * | | 1 |
| 12 | PC010508000 | SPEED CONTROLLER | | * | | 2 |
| 13 | PX5000480A0 | SWITCH FITTING METAL | | * | | 1 |
| 14 | SM6052002TN | BOLT | | * | | 2 |
| 15 | SM8060802TP | SCREW M6 L=8 | | * | | 2 |
| 16 | SM6051602TN | BOLT | | * | | 4 |
| 17 | 40154425 | BASE_PLATE | | * | | 1 |
| 18 | 40154426 | SWITCH_BRACKET | | * | | 1 |
| 19 | SL6041092TN | SCREW | | * | | 2 |
| 20 | HX00150000B | CABLE CLIP | | * | | 1 |
| 21 | SL6040892TN | BOLT | | * | | 1 |
| 22 | PJ305040001 | TEE | | * | | 2 |
| 23 | SM6042502TN | SCREW M4X0.7 L=25 | | * | | 1 |
| 24 | PV1502060B0 | 5-PORT SOLENOID VALVE | | * | | 1 |
| 25 | PJ304060502 | ELBOW UNION 6XM5 | | * | | 1 |
| 26 | PX050501000 | SILENCER | | * | | 2 |
| 27 | SM6030602TP | SCREW M3X0.5 L=6 | | * | | 2 |
| 28 | HX00150000G | CABLE CLIP | | * | | 2 |
| 29 | SL6040892TN | BOLT | | * | | 2 |
| 30 | BT0400251EB | URETHANE HOSE, BLACK | | * | | 0.32 |
| 31 | BT0400251EB | URETHANE HOSE, BLACK | | * | | 0.4 |
| 32 | BT0400251EB | URETHANE HOSE, BLACK | | * | | 0.05 |
| 33 | BT0600401EB | TUBE | | * | | 2 |
| 34 | 40154433 | AIR VALVE CORD ASM | | * | | 1 |
| 35 | 40154435 | CLAMP CYLINDER SENSOR ASM | | * | | 1 |
| 36 | EA9500B0100 | CABLE BAND | | * | | 18 |
| 37 | 26230409 | LUBRICATING OIL WICK STOPPER | | | | 1 |
| 38 | HX00150000K | CABLE CLIP | | | | 2 |
| 39 | SS7701010SP | SCREW 5/16-24 L=10 | | | | 2 |
| 40 | WP0841601SE | WASHER | | | | 2 |
| 41 | SL6041092TN | SCREW | | | | 2 |
| 42 | 40030951 | FILTER_REGULATOR_ASM. | | | | 1 |
| 43 | 40023662 | FILTER INSTALLING PLATE | | | | 1 |
| 44 | SL4051091SC | SCREW M5X0.8 L=10 | | | | 2 |
| 45 | SL9082093SE | SCREW | | | | 1 |
| 46 | WP0871602SE | WASHER 8.7X18X1.6 | | | | 1 |
| 47 | NM6080721SE | NUT M8 | | | | 1 |

AUXILIARY CLAMP DEVICE



AUXILIARY CLAMP DEVICE

| No. | Parts No. | Parts name | Remarks | Level | Cons | Qty |
|-----|-------------|-------------------------|---------|-------|------|-----|
| 48 | B9140372000 | HEXAGONAL WRENCH, SMALL | | | | 1 |

HOW TO MAKE USE OF THIS PARTS LIST

1.As to "#01" and "#02" refer to the "Note" given at the bottom of the respective pages.

2.Codes on the "Qty" column

- Each numeral indicates the number of parts required.
- "0.1" and "2.5" indicate the length (in meters) of the respective parts.

3.Parentheses mean that the corresponding part is a subpart that constructs an assembly part.

4.Dotted lines on the Figures indicate assembly parts.

1. リストページの# 0 1、# 0 2の印は、ページ下の"注記"の説明を参照下さい。
2. 数量欄の数字は、個数を表し、0. 1、2. 5等の数値は、長さ（単位メートル）を表します。
3. 数量欄の（ ）は、組部品を構成している子部品であることを意味します。
4. イラストページの-----枠は、組構成であることを意味します。

NUMERICAL INDEX OF PARTS

| PART NO | PAGE | REF NO. |
|-------------|------|---------|
| 26230409 | 2 | 37 |
| 40023662 | 2 | 43 |
| 40030951 | 2 | 42 |
| 40039743 | 2 | 4 |
| 40039744 | 2 | 5 |
| 40154132 | 2 | 3 |
| 40154425 | 2 | 17 |
| 40154426 | 2 | 18 |
| 40154428 | 2 | 6 |
| 40154429 | 2 | 7 |
| 40154432 | 2 | 8 |
| 40154433 | 2 | 34 |
| 40154435 | 2 | 35 |
| 40154437 | 2 | 2 |
| 40155454 | 2 | 1 |
| B9140372000 | 4 | 48 |
| BT0400251EB | 2 | 32 |
| BT0600401EB | 2 | 33 |
| CM300200001 | 2 | 9 |
| EA9500B0100 | 2 | 36 |
| HX00150000B | 2 | 20 |
| HX00150000G | 2 | 28 |
| HX00150000K | 2 | 38 |
| NM6080721SE | 2 | 47 |
| PA1609502A0 | 2 | 10 |
| PA900080000 | 2 | 11 |
| PC010508000 | 2 | 12 |
| PJ304060502 | 2 | 25 |
| PJ305040001 | 2 | 22 |
| PV1502060B0 | 2 | 24 |
| PX050501000 | 2 | 26 |
| PX5000480A0 | 2 | 13 |
| SL4051091SC | 2 | 44 |
| SL6040892TN | 2 | 29 |
| SL6041092TN | 2 | 41 |
| SL9082093SE | 2 | 45 |
| SM6030602TP | 2 | 27 |
| SM6042502TN | 2 | 23 |
| SM6051602TN | 2 | 16 |
| SM6052002TN | 2 | 14 |
| SM8060802TP | 2 | 15 |
| SS7701010SP | 2 | 39 |
| WP0841601SE | 2 | 40 |
| WP0871602SE | 2 | 46 |