

MODEL : LU-2810-6,2860-6 (Vベルト仕様)

List No : 1652-01

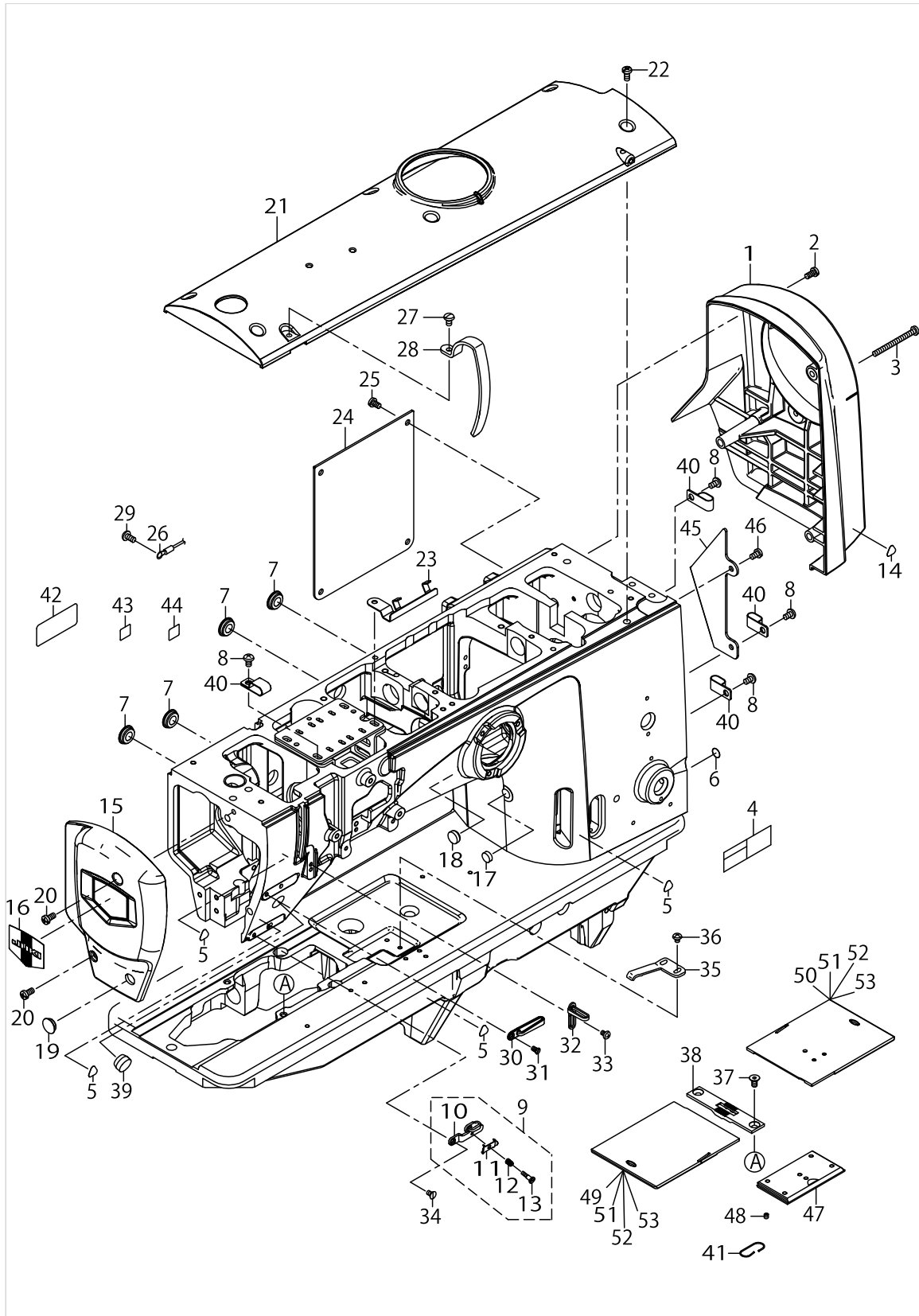
PARTS LIST

Published:10/31/2017

CONTENTS

FRAME & MISCELLANEOUS COVER COMPONENTS	1
MAIN SHAFT & THREAD TAKE-UP LEVER COMPONENTS	5
AUTO BT COMPONENTS	7
6-RANGE SW COMPONENTS.....	9
SPEED ADJUST COMPONENTS	11
THREAD CUTTING COMPONENTS.....	13
TENSION RELEASE COMPONENTS	17
PNEUMATIC COMPONENTS	19
BOTTOM COVER & BELT COVER COMPONENTS.....	21
ACCESSORIES PARTS COMPONENTS	23
LIST FOR INFORMATION OF CHANGE.....	25
HOW TO MAKE USE OF THIS PARTS LIST	26

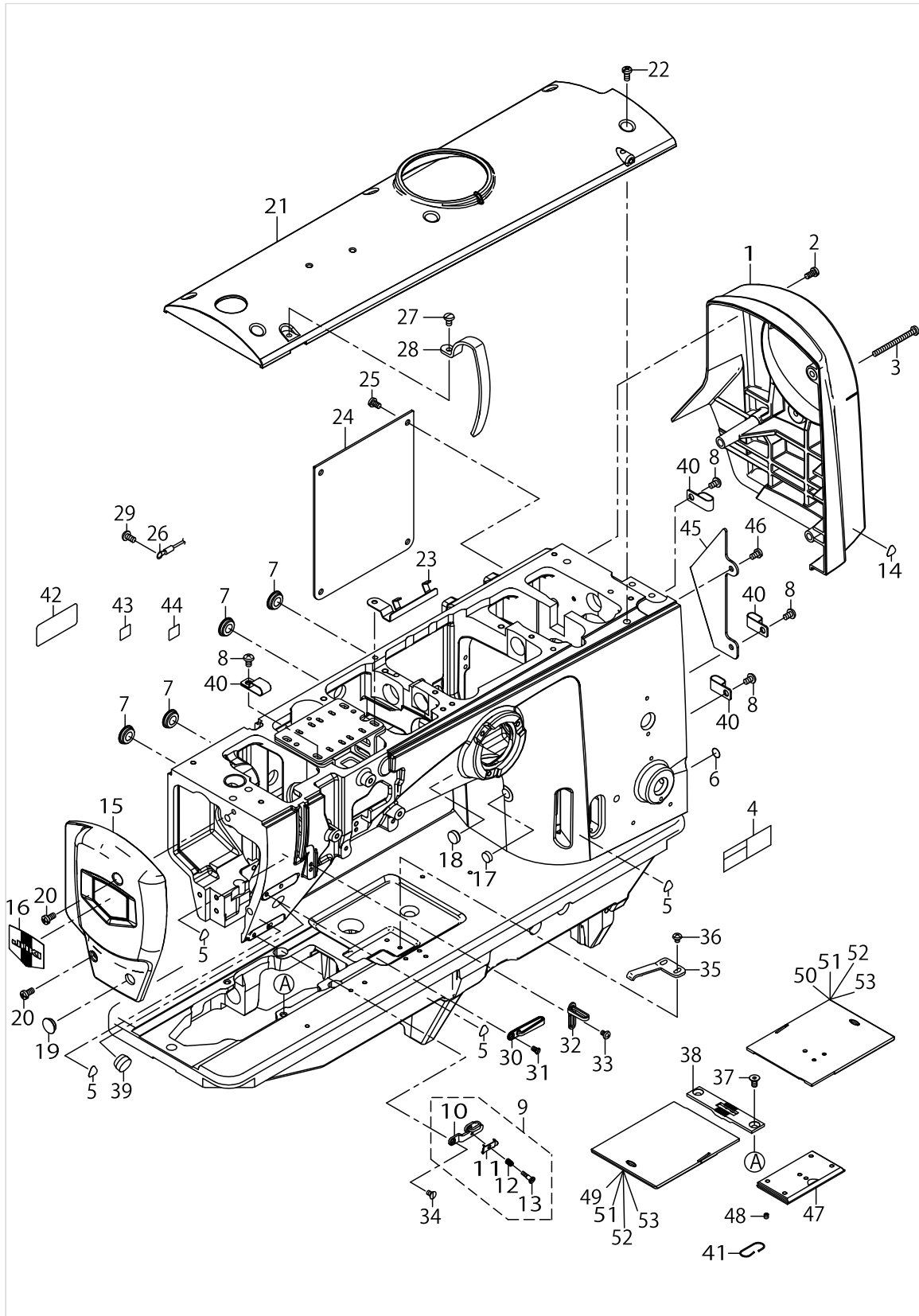
FRAME & MISCELLANEOUS COVER COMPONENTS



FRAME & MISCELLANEOUS COVER COMPONENTS

No.	Parts No.	Parts name	Remarks	Level	Cons	Qty
1	40142336	BELT COVER				1
2	SM4051055SP	SCREW				2
3	SM4055501SC	SCREW M5X0.8 L=55				2
4	40102261	SAFETY_LABEL_S				1
5	CM300200001	ATTENTION SEAL				4
6	22901805	GROUND MARK				1
7	TA1650406R0	PRUG				4
8	SM4050855SP	SCREW				5
9	40034675	THREAD_GUIDE_ASM_E				1
10	40034674	THREAD_GUIDE		*		1
11	40042716	THREAD_PRESSER_PLATE		*		1
12	B1132521000	THREAD PRESSER PLATE SPRING		*		1
13	SD0380556TL	SHOULDER SCREW D=3.8 H=5.5		*		1
14	CM300200001	ATTENTION SEAL				5
15	40130704	FACE_PLATE				1
16	22902506	FACE PLATE				1
17	TA1030402R0	RUBBER PLUG D=10.3 L=4				1
18	TA1270502R0	RUBBER PLUG				1
19	TA1250406R0	RUBBER PLUG D=12.5 L=4				1
20	SM4051055SP	SCREW				2
21	40130706	TOP_COVER				1
22	SM4051055SP	SCREW				6
23	40134805	CABLE HOLDER				1
24	40130703	APERTURE_COVER				1
25	SM4050855SP	SCREW				4
26	40142052	FG CORD ASM				1
27	SM4040855SP	SCREW				1
28	23600505	THREAD TAKE-UP LEVER COVER				1
29	SM4040855SP	SCREW				1
30	40084142	THREAD_GUIDE_LOWER				1
31	SM1040750TP	SCREW M4 L=7				1
32	40126221	THREAD_GUIDE				1
33	SM4040655SP	SCREW M4 L=6				1
34	SM1040750TP	SCREW M4 L=7				1
35	B1111563000	BED SLIDE SPRING				1
36	SM4040655SP	SCREW M4 L=6				2
37	SM1051052TN	PLATE SCREW M5 L=10				2
38	40126349	THROAT_PLATE_2810				1
39	TA1550902R0	PLUG				1
40	D2112555B00	CORD HOLDER LARGE				7
41	B111105100B	SPRING				1
42	40094561	SEWING MACHINE LABEL (EU)				1
43	CM600100101	WEEE MARK LABEL S				1
44	40116677	GOST_SAFTY_LABEL_S				1
45	40142057	BELT COVER B				1
46	SM4050855SP	SCREW				2
47	40112210	SLIDE_PLATE_FRONT				1

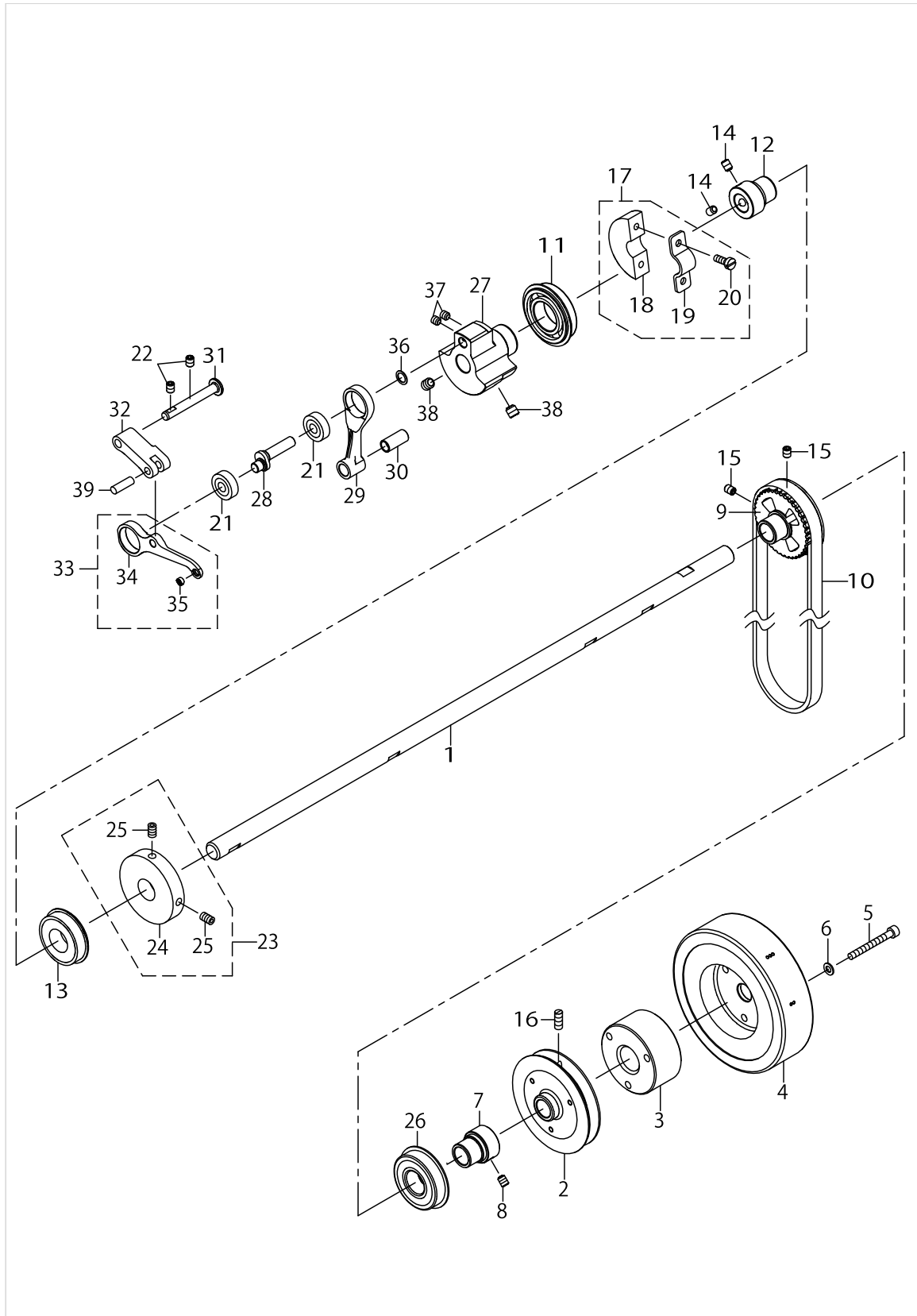
FRAME & MISCELLANEOUS COVER COMPONENTS



FRAME & MISCELLANEOUS COVER COMPONENTS

No.	Parts No.	Parts name	Remarks	Level	Cons	Qty
48	SM8040412TP	SET SCREW M4 L=4				1
49	40112224	SLIDE_PLATE_2810L	FOR LU-2810-6			1
50	40112225	SLIDE_PLATE_2810R	FOR LU-2810-6			1
51	40127056	SLIDE_PLATE_2860R	FOR LU-2860-6 (TYPE S:1/4",5/1-6",3/8") (TYPE A:6mm,8mm,10mm,12mm)			2
52	40112225	SLIDE_PLATE_2810R	FOR LU-2860-6 (TYPE S:1/8",3/16") (TYPE A:4mm)			2
53	40144416	SLIDE_PLATE_2860(14-18MM)	FOR LU-2860-6(TYPE S:1/2")			2

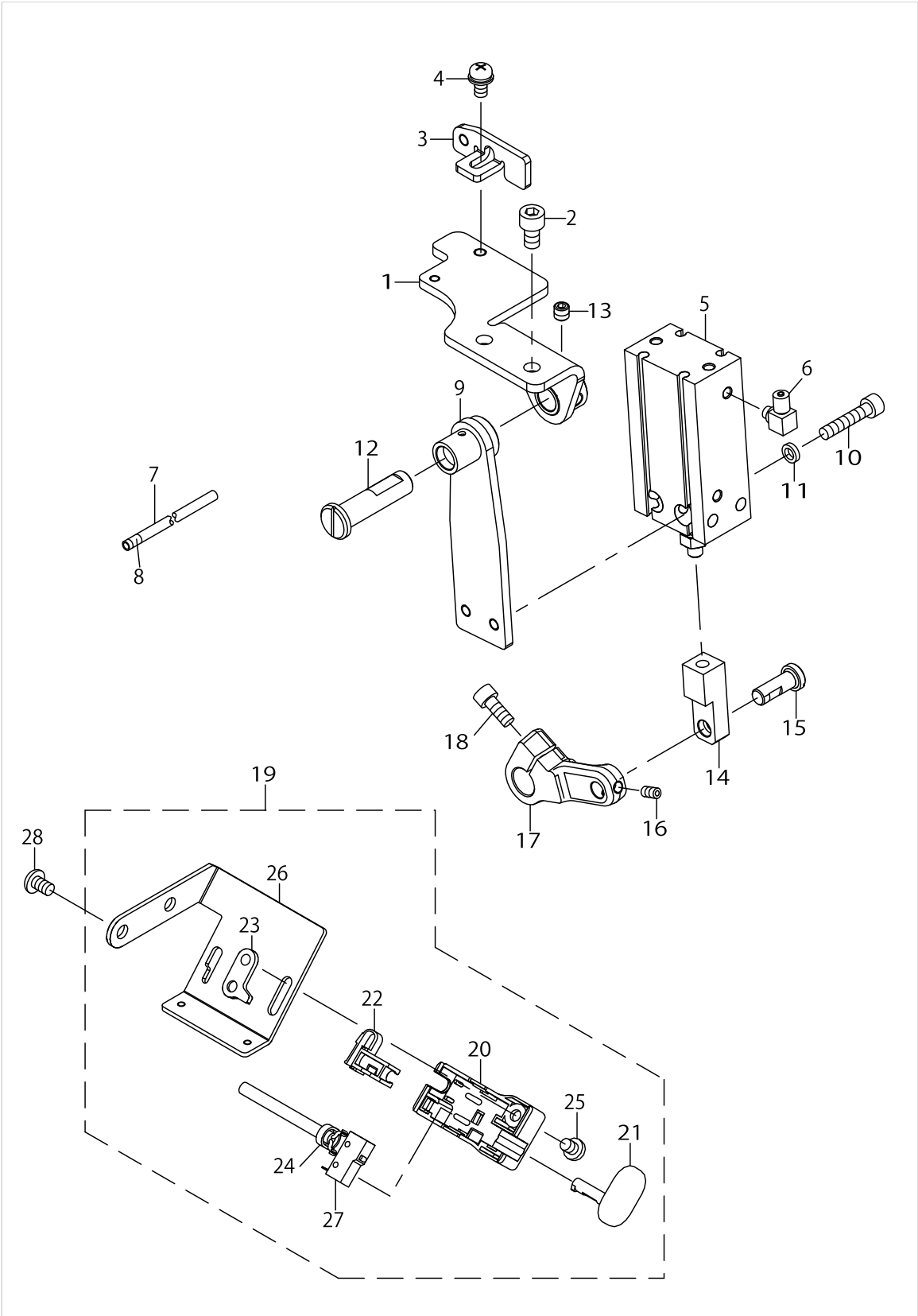
MAIN SHAFT & THREAD TAKE-UP LEVER COMPONENTS



MAIN SHAFT & THREAD TAKE-UP LEVER COMPONENTS

No.	Parts No.	Parts name	Remarks	Level	Cons	Qty
1	40139477	MAIN_SHAFT				1
2	40139478	HAND_WHEEL_A				1
3	40139480	HAND_WHEEL_WASHER				1
4	40139479	HAND_WHEEL				1
5	SM6054502TN	SCREW				3
6	WP0531001SC	WASHER M5				3
7	23605207	MAIN SHAFT BEARING				1
8	SM80608A2TP	SCREW M6 L=8				2
9	40126321	SPROCKET_UPPER				1
10	40112274	TIMING_BELT				1
11	B1203512000	BUSHING				1
12	23605207	MAIN SHAFT BEARING SUPPORT				1
13	SB120001800	BEARING				1
14	SM80608A2TP	SCREW M6 L=8				2
15	SM8060812TP	SCREW M6 L=8				2
16	SS8151550SP	SCREW 15/64-28 L=15				2
17	40010437	CRANK_BALANCER_ASM				1
18	40010438	CRANK_BALANCER		*		1
19	40010439	CRANK_BALANCER_FIX_PLATE		*		1
20	40010440	CRANK_BALANCER_FIX_PLATE_SCREW		*		2
21	SB108001900	BEARING				2
22	SM8060812TP	SCREW M6 L=8				2
23	40010533	BTW_DRIVING_WHEEL_ASM				1
24	40010534	BTW_DRIVING_WHEEL		*		1
25	40010535	DRIVING_WHEEL_SCREW		*		2
26	SB120002700	BEARING				1
27	40112091	COUNTER_WEIGHT				1
28	40112092	NEEDLE_BAR_CRANK				1
29	40112093	NEEDLE_BAR_CRANK_ROD				1
30	40112094	CRANK_ROD_BUSH				1
31	40011902	THREAD_TAKE_UP_CRANK_SHAFT				1
32	40125930	TAKE_UP_LEVER_CRANK				1
33	40127049	THREAD_TAKE_UP_ASM				1
34	40125939	THREAD_TAKE_UP		*		1
35	10546901	BUSH		*		1
36	WP0820516SP	WASHER 11.6X8.2X0.6				1
37	SM8060612TP	SCREW M6 L=6				2
38	SM8080812TP	SCREW M8X8				2
39	10721504	FEED ADJUSTING PIN				1

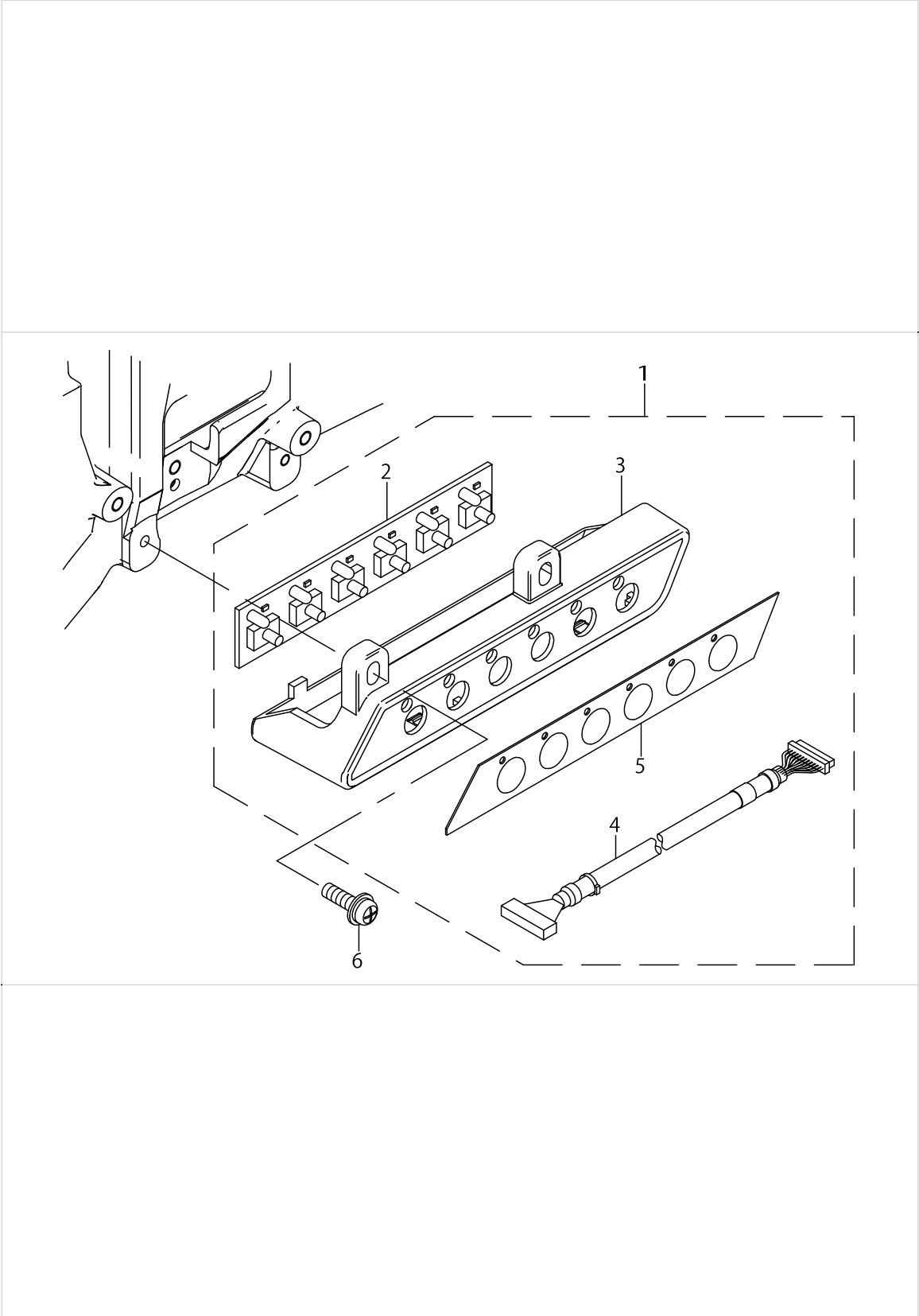
AUTO BT COMPONENTS



AUTO BT COMPONENTS

No.	Parts No.	Parts name	Remarks	Level	Cons	Qty
1	40142041	CYLINDER_BASE_ASM.				1
2	SM6061002TP	SCREW M6 L=10				2
3	40112228	MOTOR_COVER_FITTING_PLATE				1
4	SL4051091SC	SCREW M5 L=10				1
5	PA2004004A0	FREE MOUNT CYLINDER				1
6	PJ046052503	HOSE ELBOW				1
7	BT0400251EB	URETHANE TUBE BLACK 4X2.5				0.9
8	18035709	WIRE MARK (8)				1
9	40142040	CYLINDER_FITTING_PLATE_ASM.				1
10	SM6052502TN	SCREW				2
11	13441001	SPACER_2				2
12	40006716	THREAD_TRIMMER_SHAFT				1
13	SM8060612TP	SCREW M6 L=6				2
14	40139485	FEED_ADJUSTING_LINK_ROD				1
15	40139486	FEED_ADJUSTING_LINK_SHAFT				1
16	SM8050612TP	SCREW M5X6				2
17	40131592	FEED_ADJUSTING_LINK_ARM				1
18	SM6051202TP	SCREW M5X0.8 L=12				1
19	40142048	TB_SW_ASSY				1
20	23631708	REVERSE FEED SWITCH COVER		*		1
21	23631807	REVERSE FEED SWITCH SHAFT		*		1
22	23631906	REVERSE FEED SWITCH SUPPORT		*		1
23	23632102	REVERSE FEED SWITCH BASE GUIDE		*		1
24	EA9500B0100	CABLE BAND		*		1
25	SS7110740TP	SCREW 11/64-40 L=7		*		1
26	40112213	TB_SW_MOUNTING_PLATE		*		1
27	40142049	REVERSE_FEED_CORD_ASM		*		1
28	SM4050855SP	SCREW				2

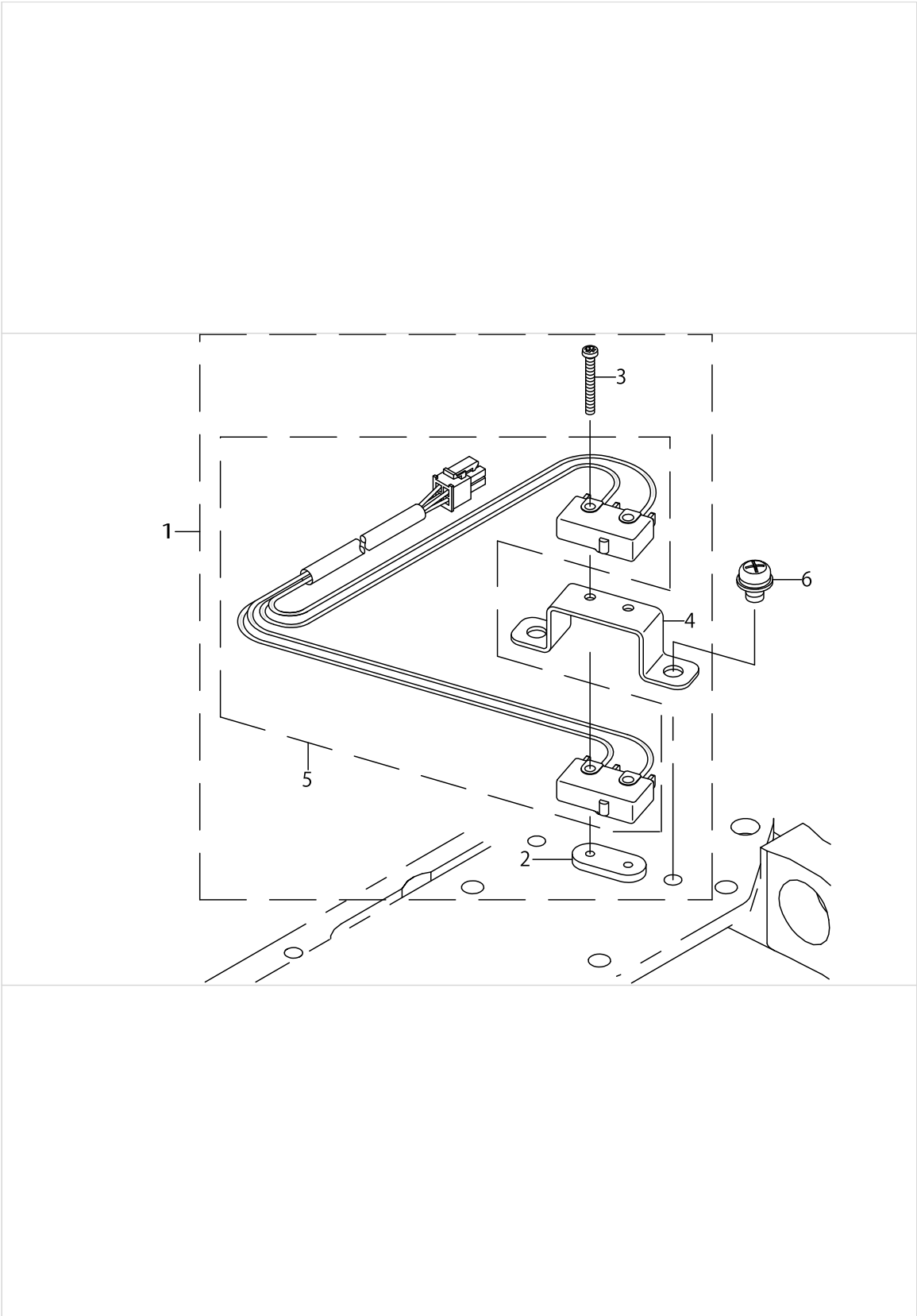
6-RANGE SW COMPONENTS



6-RANGE SW COMPONENTS

No.	Parts No.	Parts name	Remarks	Level	Cons	Qty
1	40142064	6RANGE SWITCH ASM				1
2	40105510	6RANGE SWITCH PCB ASSY		*		1
3	40112215	6RANGE_SWITCH_COVER		*		1
4	40142054	6RANGE SWITCH CABLE ASM		*		1
5	40112216	PANEL SHEET		*		1
6	SL4041491SC	SCREW M4 L=14				2

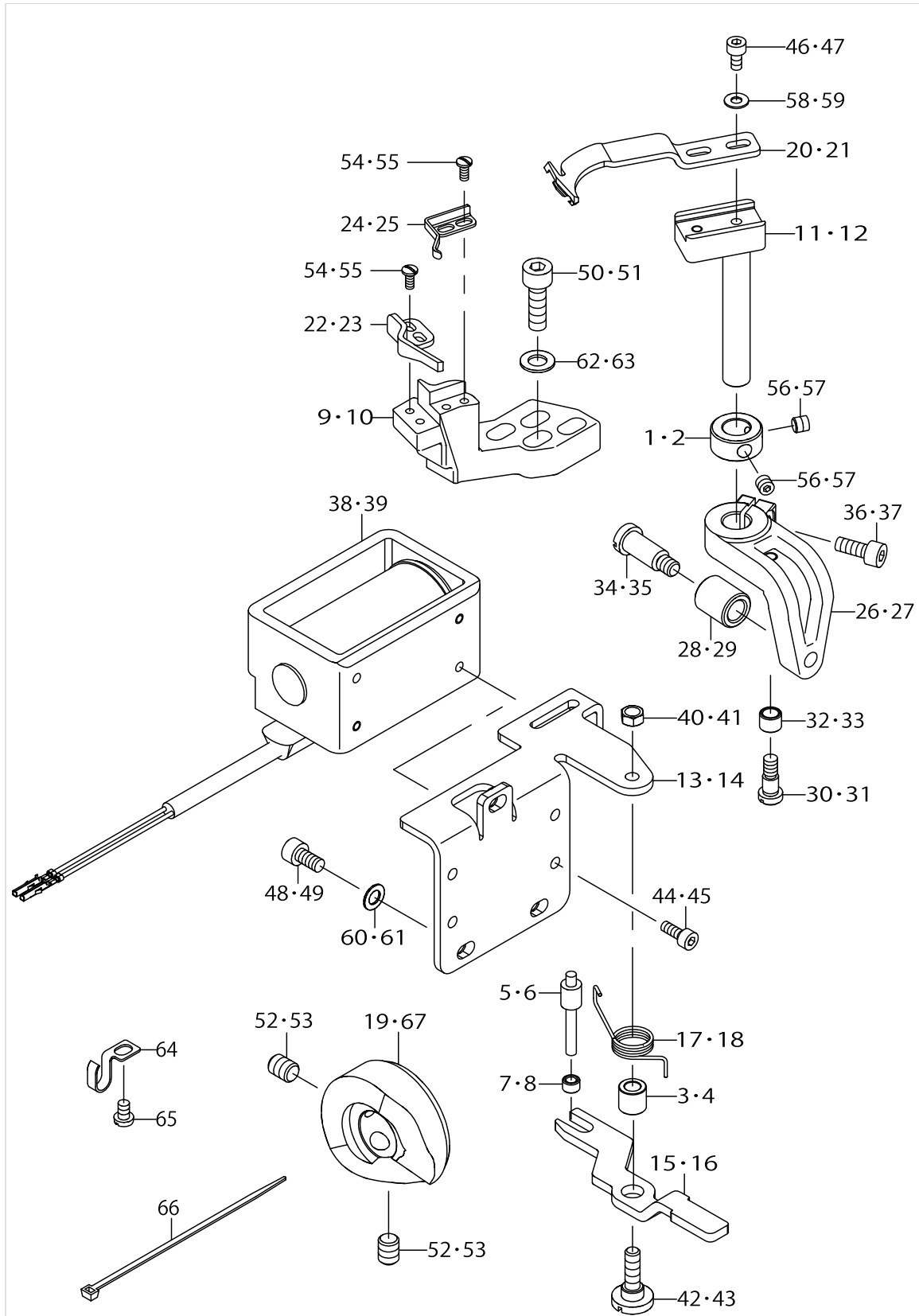
SPEED ADJUST COMPONENTS



SPEED ADJUST COMPONENTS

No.	Parts No.	Parts name	Remarks	Level	Cons	Qty
1	40142065	VERTICAL_DETECTOR_SWITCH_ASM				1
2	23638406	SAFETY SWITCH NUT		*		1
3	SM4021601SN	SCREW M2 L=16		*		2
4	40126259	SENSOR_BRACKET		*		1
5	40142053	SPEED CONTRL CORD ASM		*		1
6	SL4040691SC	SCREW M4 L=6				2

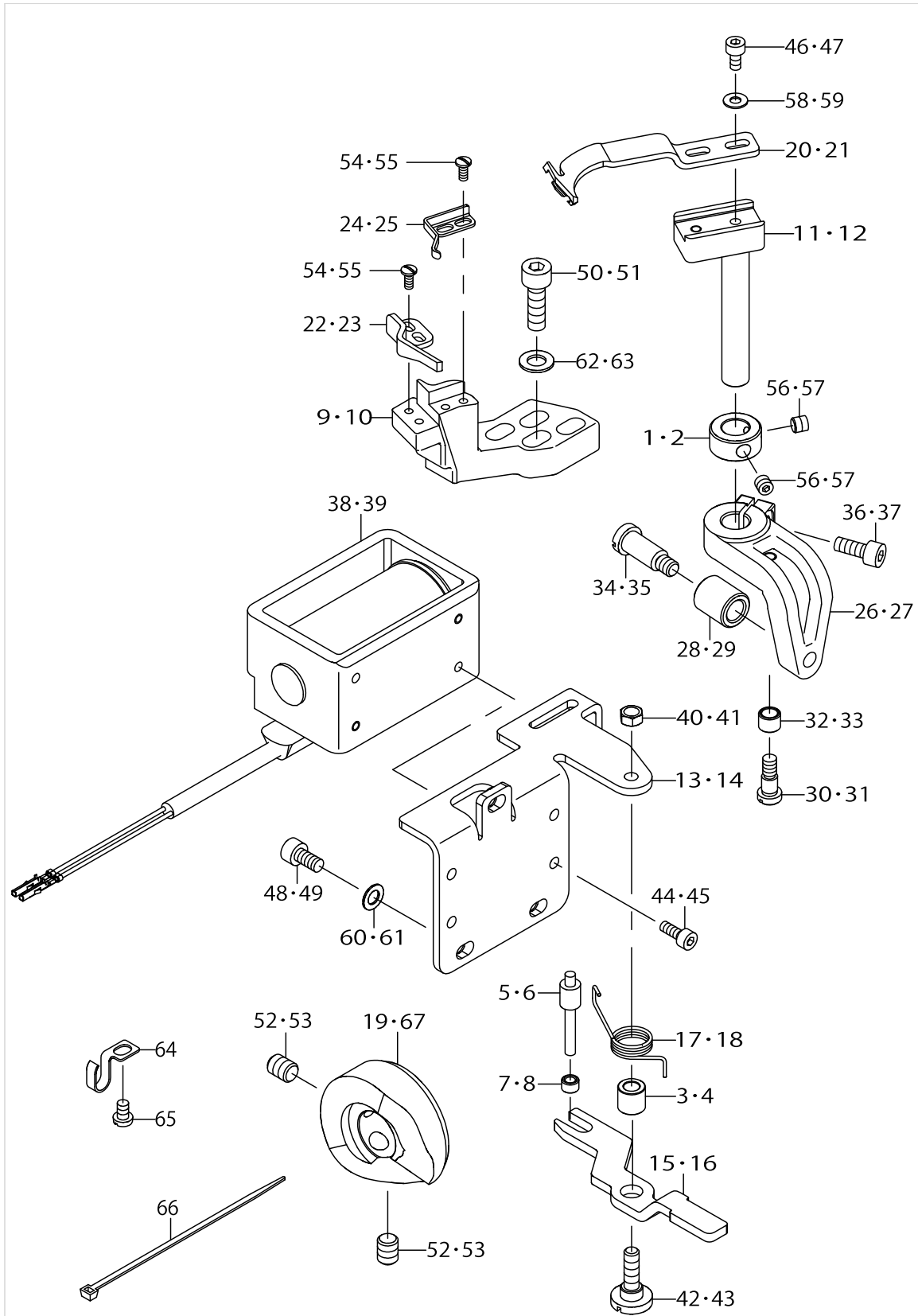
THREAD CUTTING COMPONENTS



THREAD CUTTING COMPONENTS

No.	Parts No.	Parts name	Remarks	Level	Cons	Qty
1	22917009	THRUST COLLAR	FOR LU-2810-6			1
2	22917009	THRUST COLLAR	FOR LU-2860-6			2
3	22956205	WIPER HINGE SCREW COLLAR	FOR LU-2810-6			1
4	22956205	WIPER HINGE SCREW COLLAR	FOR LU-2860-6			2
5	22957104	WIPER SOLENOID SHAFT	FOR LU-2810-6			1
6	22957104	WIPER SOLENOID SHAFT	FOR LU-2860-6			2
7	22957203	WIPER LINK COLLAR	FOR LU-2810-6			1
8	22957203	WIPER LINK COLLAR	FOR LU-2860-6			2
9	40125879	FIXED_KNIFE_BASE	FOR LU-2810-6			1
10	40125879	FIXED_KNIFE_BASE	FOR LU-2860-6			2
11	40112230	MOVING_KNIFE_SHAFT	FOR LU-2810-6			1
12	40112230	MOVING_KNIFE_SHAFT	FOR LU-2860-6			2
13	40112233	THREAD_TRIMMER_SOL_BASE_PLATE	FOR LU-2810-6			1
14	40112233	THREAD_TRIMMER_SOL_BASE_PLATE	FOR LU-2860-6			2
15	40112234	KNIFE_DRIVING_ARM_LINK	FOR LU-2810-6			1
16	40112234	KNIFE_DRIVING_ARM_LINK	FOR LU-2860-6			2
17	40112235	DRIVING_ARM_RETURN_SPRING	FOR LU-2810-6			1
18	40112235	DRIVING_ARM_RETURN_SPRING	FOR LU-2860-6			2
19	40112278	THREAD_TRIMMER_CAM_R				1
20	21389200	MOVING KNIFE	FOR LU-2810-6			1
21	40132434	MOVING KNIFE	FOR LU-2860-6			2
22	21389309	FIXED KNIFE	FOR LU-2810-6			1
23	21389309	FIXED KNIFE	FOR LU-2860-6			2
24	21389408	CLAMP SPRING	FOR LU-2810-6			1
25	21389408	CLAMP SPRING	FOR LU-2860-6			2
26	40123248	MOVING_KNIFE_DRIVING_ARM	FOR LU-2810-6			1
27	40123248	MOVING_KNIFE_DRIVING_ARM	FOR LU-2860-6			2
28	40112232	THREAD_TRIMMER_CAM_ROLLER	FOR LU-2810-6			1
29	40112232	THREAD_TRIMMER_CAM_ROLLER	FOR LU-2860-6			2
30	SD0460576TP	SHOULDER SCREW D=4.6 H=5.7	FOR LU-2810-6			1
31	SD0460576TP	SHOULDER SCREW D=4.6 H=5.7	FOR LU-2860-6			2
32	B2508047000	BLOCK ROLLER	FOR LU-2810-6			1
33	B2508047000	BLOCK ROLLER	FOR LU-2860-6			2
34	SD0651301TH	HINGE SCREW D=6.5 H=13	FOR LU-2810-6			1
35	SD0651301TH	HINGE SCREW D=6.5 H=13	FOR LU-2860-6			2
36	SM6041002TP	SCREW M4 L=10	FOR LU-2810-6			1
37	SM6041002TP	SCREW M4 L=10	FOR LU-2860-6			2
38	40142050	THREAD_TRIMMER_SOLENOID	FOR LU-2810-6			1
39	40142050	THREAD_TRIMMER_SOLENOID	FOR LU-2860-6			2
40	NS6110310SP	NUT 11/64-40	FOR LU-2810-6			1
41	NS6110310SP	NUT 11/64-40	FOR LU-2860-6			2
42	SD0650321TP	HINGE SCREW D=6.5 H=3.2	FOR LU-2810-6			1
43	SD0650321TP	HINGE SCREW D=6.5 H=3.2	FOR LU-2860-6			2
44	SM6030602TP	SCREW M3X0.5 L=6	FOR LU-2810-6			4
45	SM6030602TP	SCREW M3X0.5 L=6	FOR LU-2860-6			8
46	SM6030602TP	SCREW M3X0.5 L=6	FOR LU-2810-6			2
47	SM6030602TP	SCREW M3X0.5 L=6	FOR LU-2860-6			4

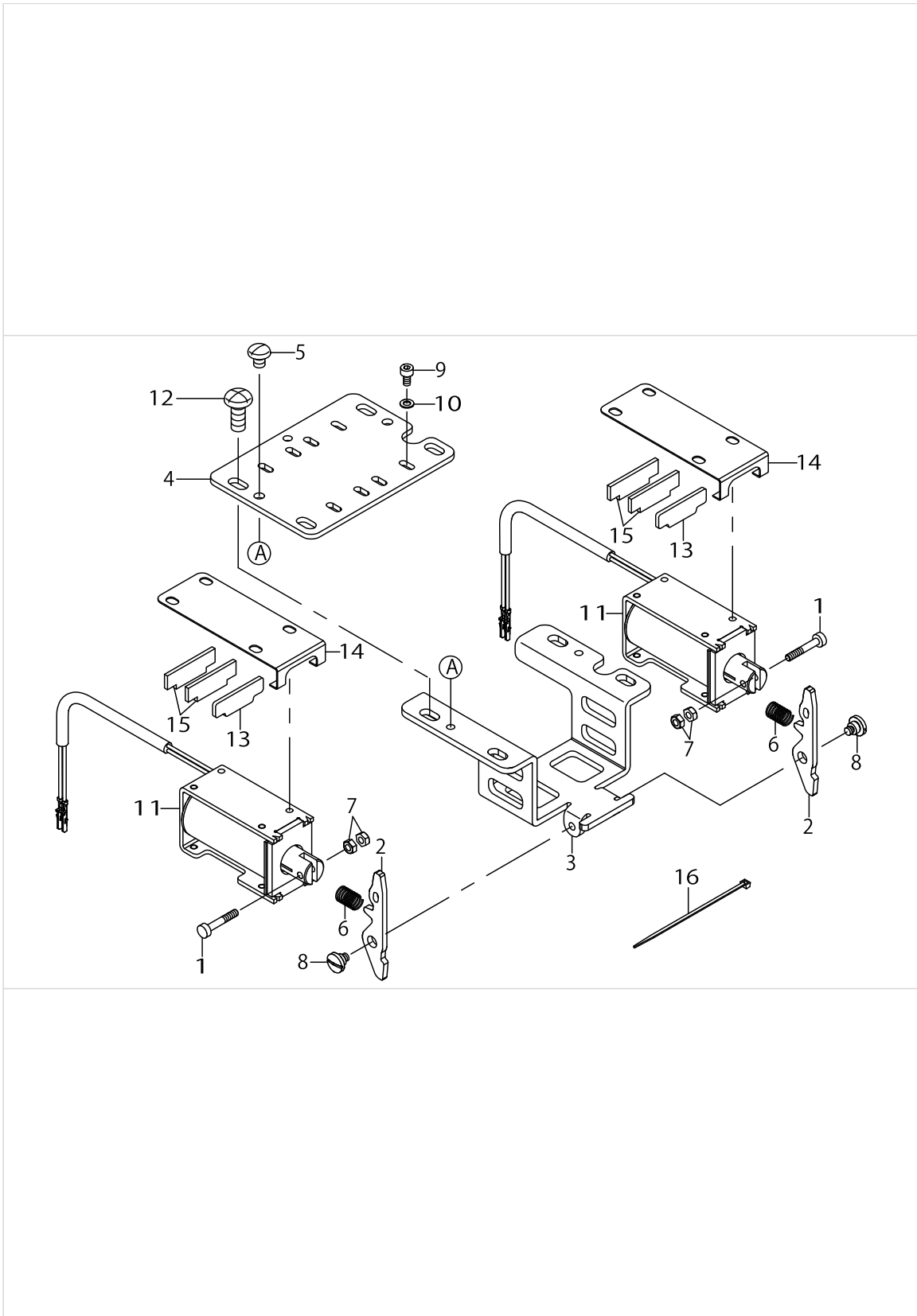
THREAD CUTTING COMPONENTS



THREAD CUTTING COMPONENTS

No.	Parts No.	Parts name	Remarks	Level	Cons	Qty
48	SM6040802TP	SCREW M4X0.7 L=8	FOR LU-2810-6			3
49	SM6040802TP	SCREW M4X0.7 L=8	FOR LU-2860-6			6
50	SM6051602TP	SCREW M5X0.8 L=16	FOR LU-2810-6			2
51	SM6051602TP	SCREW M5X0.8 L=16	FOR LU-2860-6			4
52	SM8060812TP	SCREW M6 L=8	FOR LU-2810-6			2
53	SM8060812TP	SCREW M6 L=8	FOR LU-2860-6			4
54	SS7060610SP	SCREW 3/32-56 L=5.5	FOR LU-2810-6			4
55	SS7060610SP	SCREW 3/32-56 L=5.5	FOR LU-2860-6			8
56	SS8110422TP	SCREW 11/64-40 L=4	FOR LU-2810-6			2
57	SS8110422TP	SCREW 11/64-40 L=4	FOR LU-2860-6			4
58	WP0320501SC	WASHER M3	FOR LU-2810-6			2
59	WP0320501SC	WASHER M3	FOR LU-2860-6			4
60	WP0450000SD	WASHER 4.5X8X0.5	FOR LU-2810-6			3
61	WP0450000SD	WASHER 4.5X8X0.5	FOR LU-2860-6			6
62	WP0550800SP	WASHER 5.5X10X0.8	FOR LU-2810-6			2
63	WP0550800SP	WASHER 5.5X10X0.8	FOR LU-2860-6			4
64	26231902	OIL WICK PIPE STOPPER				1
65	SM4040655SP	SCREW M4 L=6				1
66	EA9500B0100	CABLE BAND				1
67	40126546	THREAD_TRIMMER_CAM_LEFT	FOR LU-2860-6			1

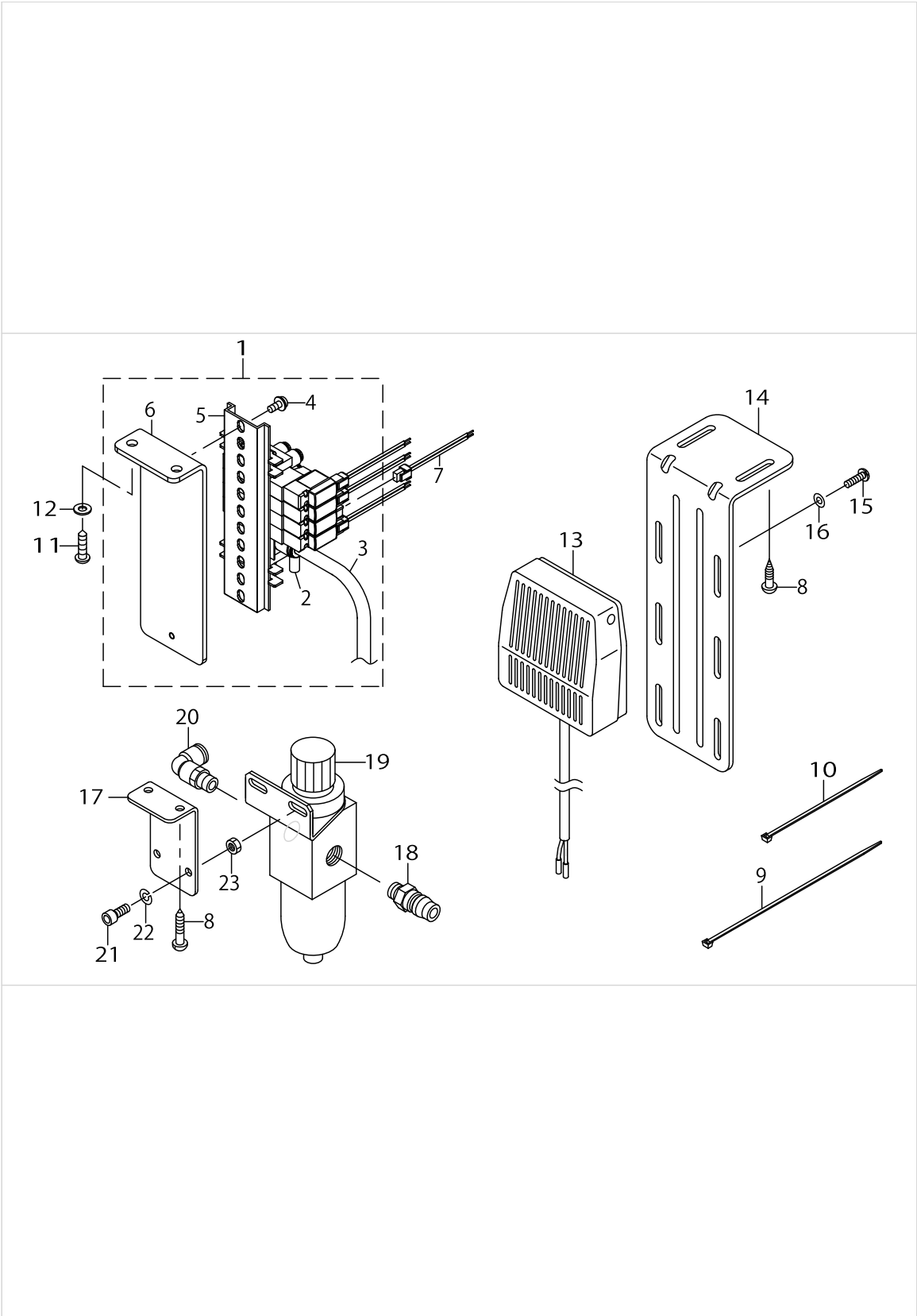
TENSION RELEASE COMPONENTS



TENSION RELEASE COMPONENTS

No.	Parts No.	Parts name	Remarks	Level	Cons	Qty
1	23542418	CLUTCH LINK PIN				2
2	40125948	RELEASE_SOLENOID_LINK				2
3	40126263	SOLENOID_LINK_MOUNTING_PLATE				1
4	40125949	RELEASE_SOLENOID_BASE				1
5	SS4090515SP	SCREW 9/64-40 L=5				2
6	32055501	AT (UPPER) SPRING				2
7	NM6030001SC	NUT M3X0.5 TYPE1				4
8	SD0550271TP	HINGE SCREW D=5.50 H=2.7				2
9	SM6030602TP	SCREW M3X0.5 L=6				8
10	WP0320501SE	WASHER 3.2X7.0X0.5				8
11	40142051	TENSION_RELEASE_SOLENOID				2
12	SM4051255SP	SCREW M5 L=12				4
13	40126563	STOPPER_PLATE				2
14	40126562	RUBBER HOLDER				2
15	40086679	WIPER_STOPPER_RUBBER				4
16	EA9500B0100	CABLE BAND				1

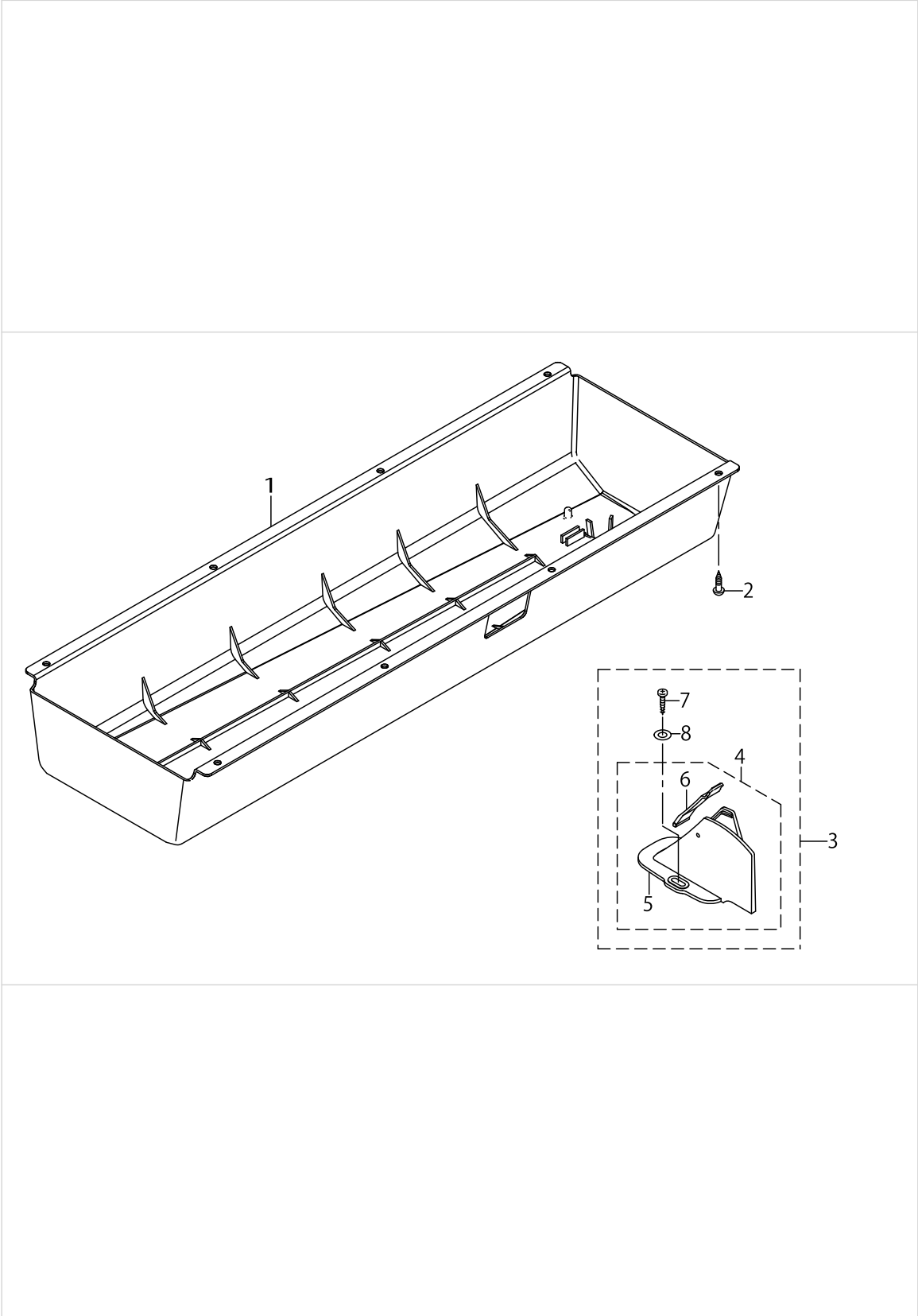
PNEUMATIC COMPONENTS



PNEUMATIC COMPONENTS

No.	Parts No.	Parts name	Remarks	Level	Cons	Qty
1	40142056	SOLENOID_VALVE_FITTING_BASE_ASM				1
2	BT0600401EB	URETHANE TUBE BLACK 6X4		*		1.1
3	BT0800501EB	URETHANE TUBE BLACK 8X5		*		1.1
4	SL4041091SC	SCREW M4 L=10		*		2
5	40126545	SOLENOID_VALVE_ASSY		*		1
6	40030950	SOLENOID_VALVE_FITTING_BASE		*		1
7	40126128	SOLENOID VALVE CABLE ASM				1
8	SK3482001SE	WOOD SCREW D=4.8 L=20				4
9	EA9500B0200	CABLE BAND				3
10	EA9500B0100	CABLE BAND				2
11	SK3512001SE	WOOD SCREW D=5.1 L=20				2
12	WP0501016SD	WASHER 5X10.5X1				2
13	40105518	KNEE SW ASM				1
14	40126266	KNEE_SWITCH_BASE_PLATE				1
15	ST4041451SN	SCREW				2
16	WP0430801SC	WASHER M4				2
17	13860408	REGULATOR BRACKET				1
18	PJ025100003	PLUG				1
19	PF055107000	FILTER REGULATOR				1
20	PJ304065101	ELBOW UNION 6XPT1/8				1
21	SM6051202TP	SCREW M5X0.8 L=12				2
22	WS0510002KN	SPRING WASHER M5				2
23	NM6050001SP	NUT M5X0.8 TYPE1				2

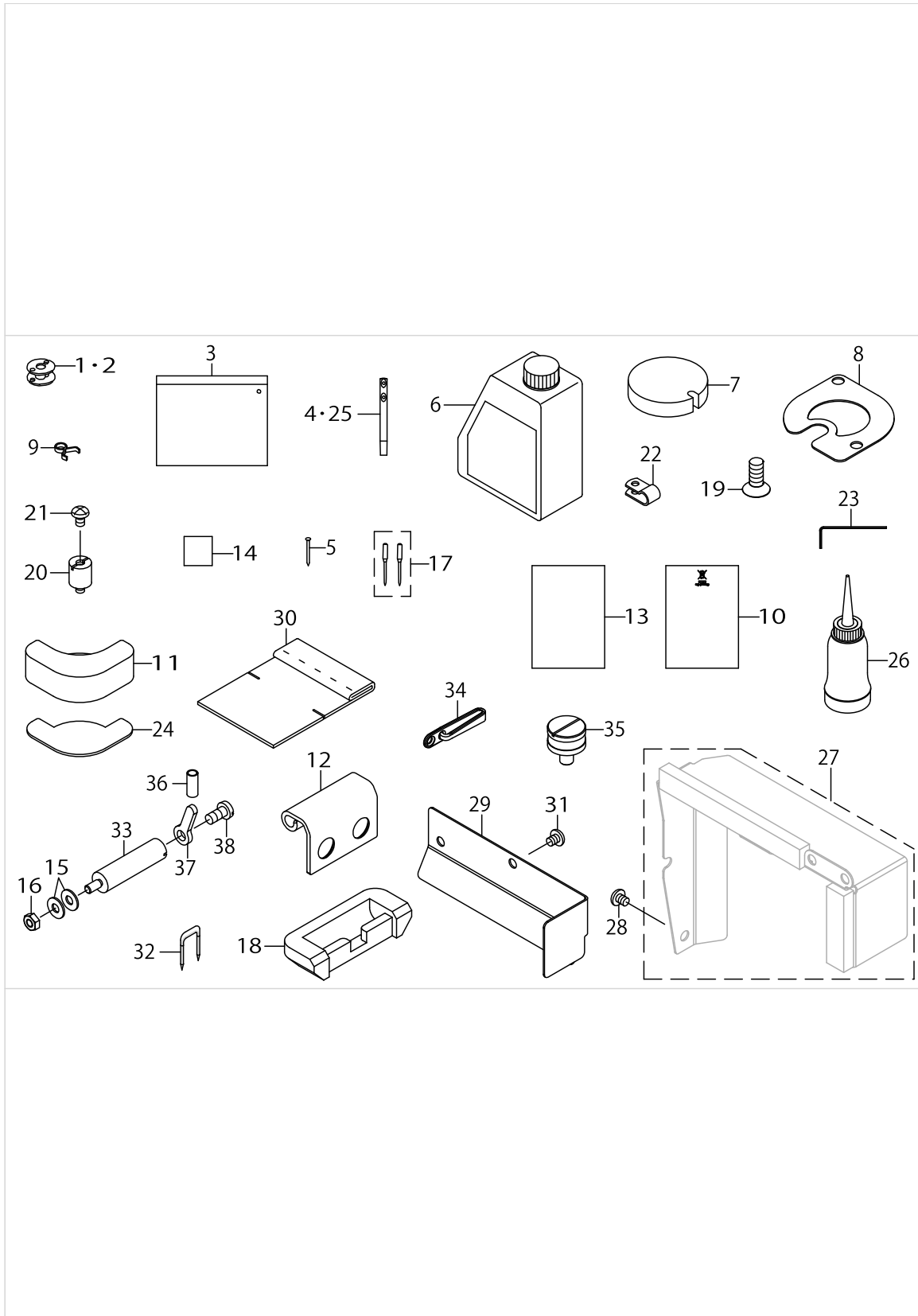
BOTTOM COVER & BELT COVER COMPONENTS



BOTTOM COVER & BELT COVER COMPONENTS

No.	Parts No.	Parts name	Remarks	Level	Cons	Qty
1	40126155	OIL_PAN				1
2	SK3482001SE	WOOD SCREW D=4.8 L=20				8
3	40126560	ASSY_BELT_COVER_B2				1
4	40112296	BELT_COVER_B_COMPL.		*		1
5	40112314	BELT_COVER_B		*		1
6	40112313	BELT_COVER_B_LID_ASM.		*		1
7	SK3412000SC	WOOD SCREW D=4.1 L=20		*		2
8	WP0501016SD	WASHER 5X10.5X1		*		2

ACCESSORIES PARTS COMPONENTS



ACCESSORIES PARTS COMPONENTS

No.	Parts No.	Parts name	Remarks	Level	Cons	Qty
1	21334800	ALUMINUM BOBBIN WITH KNURL				1
2	21334800	ALUMINUM BOBBIN WITH KNURL	FOR LU-2860-6			2
3	21413158	ACCESSORY BAG ASM.				1
4	22958300	NEEDLE THREAD GUIDE PIN	FOR LU-2810-6			1
5	22926208	NAIL				16
6	40102087	JUKI_MACHINE_OIL_7				1
7	40126405	OIL_FILTER				1
8	40126267	FELT HOLDER				1
9	23629306	PIPE STOPPER A				2
10	CM600100201	WEEE INFORMATION SHEET	FOR JE			1
11	40126152	CUSHION_RUBBER				2
12	40125869	HINGE				2
13	40142430	DECLARATION OF INCORPORATION (LU2800)	FOR JE			1
14	40193158	LU2800 SAFETY NOTES				1
15	WP0551016SH	WASHER 5.5X13X1				2
16	NM6050001SP	NUT M5X0.8 TYPE1				1
17	M13517B1602	NEEDLE 135X17 #160-2				1
18	22926000	RUBBER CUSHION				2
19	B1516210D00	SCREW				4
20	40126222	CP_SPACER				2
21	SM4050855SP	SCREW				2
22	HX00150000B	CABLE CLIP				2
23	40079298	WRENCH				1
24	10740900	RUBBER	FOR LU-2860-6			3
25	22958300	NEEDLE THREAD GUIDE PIN	FOR LU-2860-6			2
26	B91210120A0	OILER ASM.				1
27	40131916	OIL_SHIELD_PLATE_ASSY	FOR LU-2810-6			1
28	SM4050655SP	SCREW M5 L=6	FOR LU-2810-6			4
29	40131580	OIL_SHIELD_PLATE	FOR LU-2860-6			1
30	40133730	OIL FILTER				1
31	SM4050655SP	SCREW M5 L=6	FOR LU-2860-6			2
32	MAO11532000	CORD STAPLE				3
33	40142037	SYNCHRONIZER_HOLD_STUD				1
34	40084142	THREAD_GUIDE_LOWER				1
35	22622401	SYNCRO FRNGE				1
36	BT0630520Z0	INSULATED TUBE 6.3X5.2				0.015
37	40142036	SYNCHRONIZER_HOLD_PLATE				1
38	SM4061255SP	SCREW M6 L=12				1

LIST FOR INFORMATION OF CHANGE

As to the place changed, refer to the corresponding Rev.No.
 When previous parts (Obsoloted part) and new parts (Added parts) are not interchangeable with each other:
 In this case, even obsoloted parts (D.) can be ordered with the obsoloted part number, so select the parts with changed dates and place your orders.

変更箇所は、該当Rev.No.版をご参照ください。
 部品の互換性がない変更の場合は、削除された品番でも、ご注文できます。

No.1652-01 Rev.No.

*A: Added parts 追加部品 / D: Obsoloted parts 削除部品 / E: Erratum 訂正

* Rev. No.	Page 頁	Ref. No.	Parts No. 品番	* Rev. No.	Page 頁	Ref. No.	Parts No. 品番
D 00	14	14	401-12334	A 01	14	14	401-93158
D 00	14	15	401-27057				
D 00	14	16	401-30615				
D 00	14	17	401-42058				
D 00	14	18	401-42060				
D 00	14	19	401-42059				
D 00	14	33	401-26347				
D 00	14	45	401-42061				

HOW TO MAKE USE OF THIS PARTS LIST

1.Explanation of codes

1)"*"mark.....means this part is changed from the previous parts book.

As to the details of the change, refer to the "List for information of change".

2)"#01".....refer to "Note" explanation at bottom of page.

2.Codes on the "Qty" column

• Each numeral indicates the number of parts required.

• "0.1" and "2.5" indicate the length (in meters) of the respective parts.

3.Parentheses mean that the corresponding part is a subpart that constructs an assembly part.

4.Dotted lines on the Figures indicate assembly parts.

1."注記"欄の記号説明

1) "*"印.....前回のパーツブックに比較して今回変更された部品を意味します。

変更内容は、"変更情報リスト"を参照してください。

2) "#01".....ページ下の"注記"の説明を参照してください。

2.数量欄の数字は、個数を表し、0.1、2.5等の数値は、長さ（単位メートル）を表します。

3.数量欄の（ ）は、組部品を構成している子部品であることを意味します。

4.イラストページの-----枠は、組構成であることを意味します。

Illustration of this parts list is based on the model LZH-1290-7

このパーツリストは、LZH-1290-7を基本にイラストを作成してあります。

NUMERICAL INDEX OF PARTS

PART NO	PAGE	REF NO.	PART NO	PAGE	REF NO.	PART NO	PAGE	REF NO.
10546901	6	35	40079298	24	23	40126266	20	14
10721504	6	39	40084142	2	30	40126267	24	8
10740900	24	24	40084142	24	34	40126321	6	9
13441001	8	11	40086679	18	15	40126349	2	38
13860408	20	17	40094561	2	42	40126405	24	7
18035709	8	8	40102087	24	6	40126545	20	5
21334800	24	1·2	40102261	2	4	40126546	16	19·67
21389200	14	20·21	40105510	10	2	40126560	22	3
21389309	14	22·23	40105518	20	13	40126562	18	14
21389408	14	24·25	40112091	6	27	40126563	18	13
21413158	24	3	40112092	6	28	40127049	6	33
22622401	24	35	40112093	6	29	40127056	4	51
22901805	2	6	40112094	6	30	40130703	2	24
22902506	2	16	40112210	2	47	40130704	2	15
22917009	14	1·2	40112213	8	26	40130706	2	21
22926000	24	18	40112215	10	3	40131580	24	29
22926208	24	5	40112216	10	5	40131592	8	17
22956205	14	3·4	40112224	4	49	40131916	24	27
22957104	14	5·6	40112225	4	52	40132434	14	20·21
22957203	14	7·8	40112228	8	3	40133730	24	30
22958300	24	4·25	40112230	14	11·12	40134805	2	23
23542418	18	1	40112232	14	28·29	40139477	6	1
23600505	2	28	40112233	14	13·14	40139478	6	2
23605207	6	12	40112234	14	15·16	40139479	6	4
23629306	24	9	40112235	14	17·18	40139480	6	3
23631708	8	20	40112274	6	10	40139485	8	14
23631807	8	21	40112278	14	19·67	40139486	8	15
23631906	8	22	40112296	22	4	40142036	24	37
23632102	8	23	40112313	22	6	40142037	24	33
23638406	12	2	40112314	22	5	40142040	8	9
26231902	16	64	40116677	2	44	40142041	8	1
32055501	18	6	40123248	14	26·27	40142048	8	19
40006716	8	12	40125869	24	12	40142049	8	27
40010437	6	17	40125879	14	9·10	40142050	14	38·39
40010438	6	18	40125930	6	32	40142051	18	11
40010439	6	19	40125939	6	34	40142052	2	26
40010440	6	20	40125948	18	2	40142053	12	5
40010533	6	23	40125949	18	4	40142054	10	4
40010534	6	24	40126128	20	7	40142056	20	1
40010535	6	25	40126152	24	11	40142057	2	45
40011902	6	31	40126155	22	1	40142064	10	1
40030950	20	6	40126221	2	32	40142065	12	1
40034674	2	10	40126222	24	20	40142336	2	1
40034675	2	9	40126259	12	4	40142430	24	13
40042716	2	11	40126263	18	3	40144416	4	53

NUMERICAL INDEX OF PARTS

PART NO	PAGE	REF NO.	PART NO	PAGE	REF NO.	PART NO	PAGE	REF NO.
40193158	24	14	SL4040691SC	12	6	TA1550902R0	2	39
B111105100B	2	41	SL4041091SC	20	4	TA1650406R0	2	7
B1111563000	2	35	SL4041491SC	10	6	WP0320501SC	16	58-59
B1132521000	2	12	SL4051091SC	8	4	WP0320501SE	18	10
B1203512000	6	11	SM1040750TP	2	34	WP0430801SC	20	16
B1516210D00	24	19	SM1051052TN	2	37	WP0450000SD	16	61
B2508047000	14	32-33	SM4021601SN	12	3	WP0501016SD	20	12
B91210120A0	24	26	SM4040655SP	2	36	WP0501016SD	22	8
BT0400251EB	8	7	SM4040655SP	16	65	WP0531001SC	6	6
BT0600401EB	20	2	SM4040855SP	2	29	WP0550800SP	16	62-63
BT0630520Z0	24	36	SM4050655SP	24	31	WP0551016SH	24	15
BT0800501EB	20	3	SM4050855SP	2	46	WP0820516SP	6	36
CM300200001	2	14	SM4050855SP	8	28	WS0510002KN	20	22
CM600100101	2	43	SM4050855SP	24	21			
CM600100201	24	10	SM4051055SP	2	22			
D2112555B00	2	40	SM4051255SP	18	12			
EA9500B0100	8	24	SM4055501SC	2	3			
EA9500B0100	16	66	SM4061255SP	24	38			
EA9500B0100	18	16	SM6030602TP	14	46-47			
EA9500B0100	20	10	SM6030602TP	18	9			
EA9500B0200	20	9	SM6040802TP	16	48-49			
HX00150000B	24	22	SM6041002TP	14	36-37			
M13517B1602	24	17	SM6051202TP	8	18			
MAO11532000	24	32	SM6051202TP	20	21			
NM6030001SC	18	7	SM6051602TP	16	50-51			
NM6050001SP	20	23	SM6052502TN	8	10			
NM6050001SP	24	16	SM6054502TN	6	5			
NS6110310SP	14	40-41	SM6061002TP	8	2			
PA2004004A0	8	5	SM8040412TP	4	48			
PF055107000	20	19	SM8050612TP	8	16			
PJ025100003	20	18	SM8060612TP	6	37			
PJ046052503	8	6	SM8060612TP	8	13			
PJ304065101	20	20	SM8060812TP	6	22			
SB108001900	6	21	SM8060812TP	16	52-53			
SB120001800	6	13	SM80608A2TP	6	14			
SB120002700	6	26	SM8080812TP	6	38			
SD0380556TL	2	13	SS4090515SP	18	5			
SD0460576TP	14	30-31	SS7060610SP	16	54-55			
SD0550271TP	18	8	SS7110740TP	8	25			
SD0650321TP	14	42-43	SS8110422TP	16	56-57			
SD0651301TH	14	34-35	SS8151550SP	6	16			
SK3412000SC	22	7	ST4041451SN	20	15			
SK3482001SE	20	8	TA1030402R0	2	17			
SK3482001SE	22	2	TA1250406R0	2	19			
SK3512001SE	20	11	TA1270502R0	2	18			