

MODEL : T040SC

List No : 1628-00

# PARTS LIST

Published:09/10/2017

## CONTENTS

---

|                                                  |    |
|--------------------------------------------------|----|
| APPLICABLE MODELS & USAGE .....                  | 1  |
| KNIFE & MAGNET COMPONENTS.....                   | 3  |
| SENSOR & TENSION RELEASE MAGNET COMPONENTS ..... | 7  |
| SENSOR,SWITCH & SOLENOID COMPONENTS .....        | 9  |
| HOW TO MAKE USE OF THIS PARTS LIST .....         | 11 |

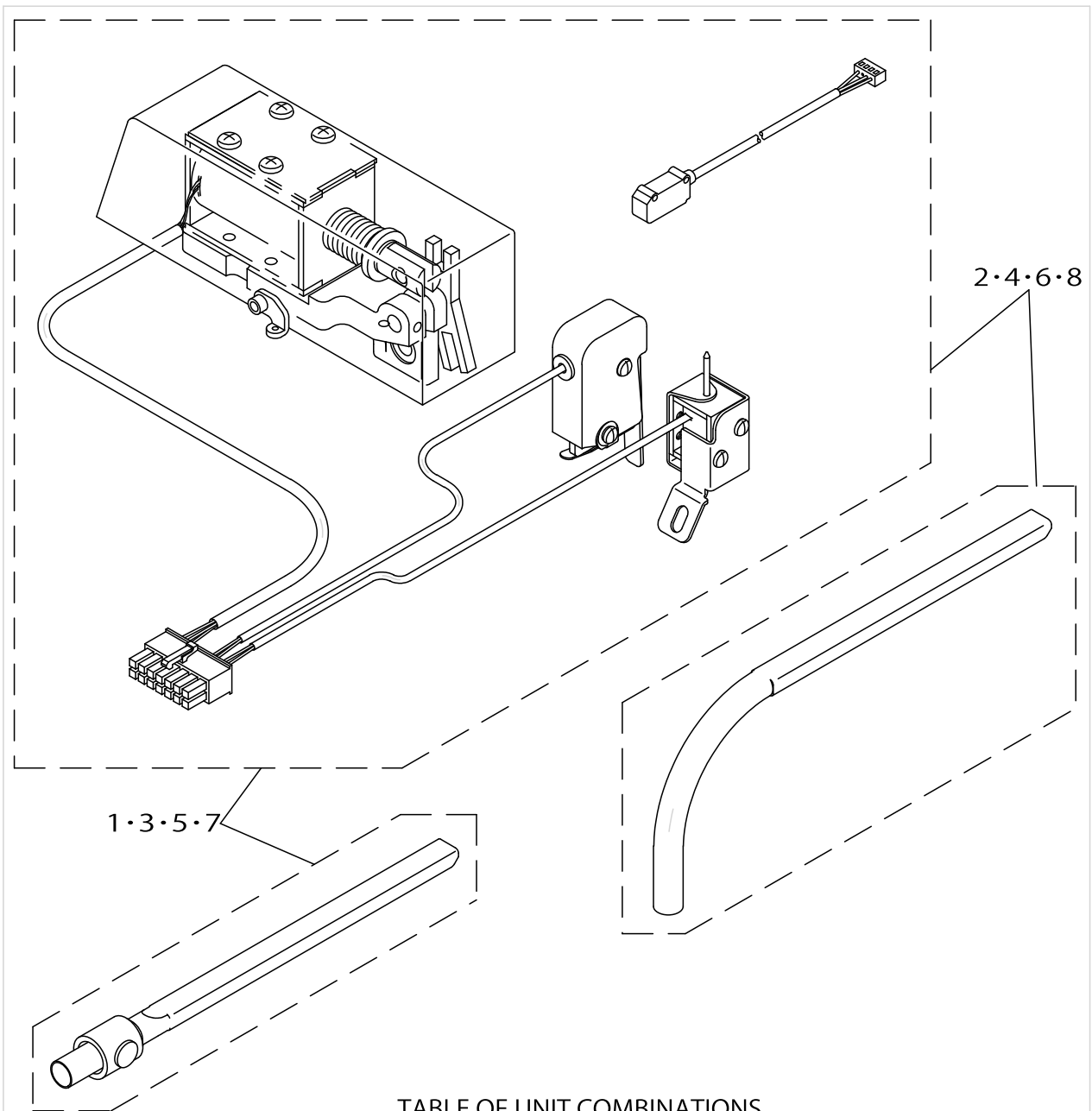


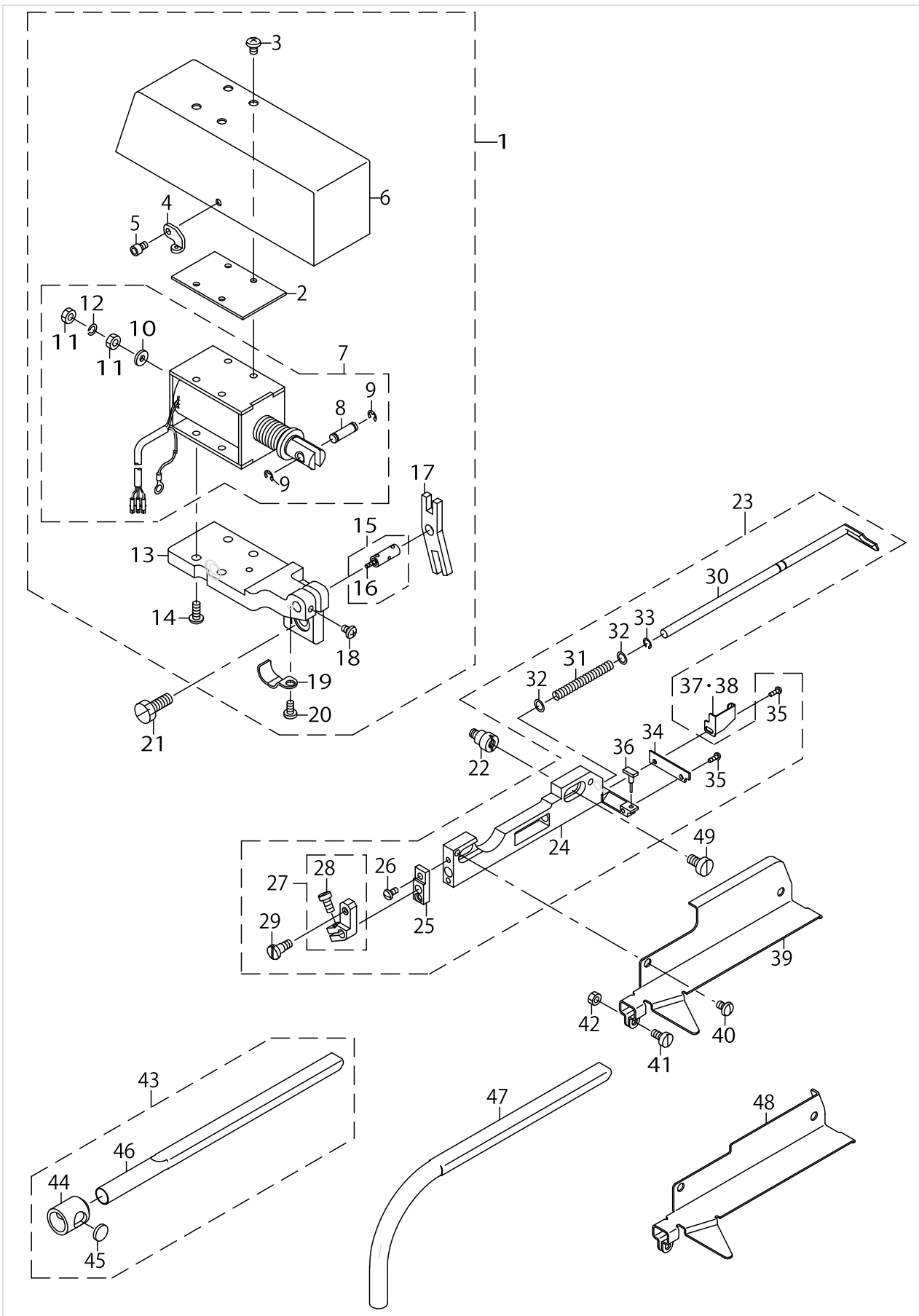
TABLE OF UNIT COMBINATIONS  
ユニット組合わせ表

| Ref. No. | Part No.<br>品番 | Table Type<br>テーブル仕様 | Applicable models<br>適用機種 |
|----------|----------------|----------------------|---------------------------|
| 1        | 401-33260      | SEMI-SUNKEN 卓上式      | MO-6△00S                  |
| 2        | 401-33261      | FULLY-SUNKEN 全沈式     |                           |
| 3        | 401-33262      | SEMI-SUNKEN 卓上式      | MO-6900R                  |
| 4        | 401-33263      | FULLY-SUNKEN 全沈式     |                           |
| 5        | 401-33264      | SEMI-SUNKEN 卓上式      | MO-6900G                  |
| 6        | 401-33265      | FULLY-SUNKEN 全沈式     |                           |
| 7        | 401-33266      | SEMI-SUNKEN 卓上式      | MO-6900J                  |
| 8        | 401-33267      | FULLY-SUNKEN 全沈式     |                           |

APPLICABLE MODELS & USAGE

| No. | Parts No. | Parts name               | Remarks | Level | Cons | Qty |
|-----|-----------|--------------------------|---------|-------|------|-----|
| 1   | 40133260  | T040SC SEMI SUNKEN MO-S  |         |       |      | 1   |
| 2   | 40133261  | T040SC FULLY SUNKEN MO-S |         |       |      | 1   |
| 3   | 40133262  | T040SC SEMI SUNKEN MO-R  |         |       |      | 1   |
| 4   | 40133263  | T040SC FULLY SUNKEN MO-R |         |       |      | 1   |
| 5   | 40133264  | T040SC SEMI SUNKEN MO-G  |         |       |      | 1   |
| 6   | 40133265  | T040SC FULLY SUNKEN MO-G |         |       |      | 1   |
| 7   | 40133266  | T040SC SEMI SUNKEN MO-J  |         |       |      | 1   |
| 8   | 40133267  | T040SC FULLY SUNKEN MO-J |         |       |      | 1   |

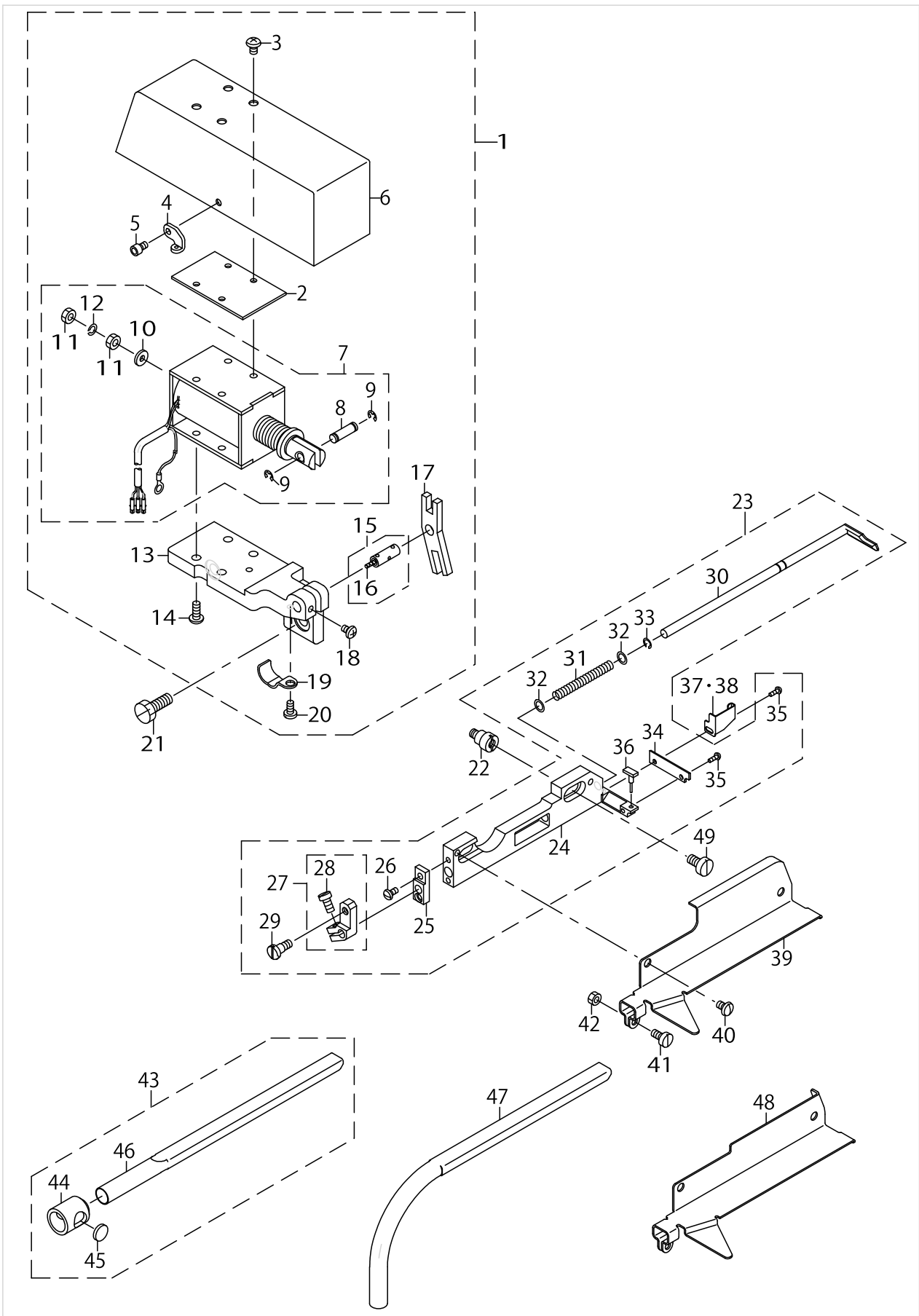
KNIFE & MAGNET COMPONENTS



KNIFE & MAGNET COMPONENTS

| No. | Parts No.    | Parts name                     | Remarks                | Level | Cons | Qty |
|-----|--------------|--------------------------------|------------------------|-------|------|-----|
| 1   | 40133253     | THREAD CUTTER MAGNET ASSY      |                        |       |      | 1   |
| 2   | MAT81132T00  | MAGNET RUBBER COVER            |                        | *     |      | 1   |
| 3   | SM4040601SB  | SCREW M4 L=6                   |                        | *     |      | 4   |
| 4   | B2526704000  | LOWER LOOPER THREAD GUIDE      |                        | *     |      | 1   |
| 5   | SS6090630SP  | SCREW 9/64-40 L=6              |                        | *     |      | 1   |
| 6   | MAT03219000  | MAGNET COVER                   |                        | *     |      | 1   |
| 7   | 40133252     | THREAD CUTTER MAGNET           |                        | *     |      | 1   |
| 8   | MAT80114T00  | PLUNGER PIN                    |                        | *     |      | 1   |
| 9   | RE0300000K0  | E-RING 3                       |                        | *     |      | 2   |
| 10  | MAT80115T00  | WASHER                         |                        | *     |      | 1   |
| 11  | NM6040001SE  | NUT M4                         |                        | *     |      | 2   |
| 12  | WS0411002KS  | SPRING WASHER 4.1X7.6X1.0      |                        | *     |      | 1   |
| 13  | MAT03218000B | MAGNET WITH MOUNTING BASE      |                        | *     |      | 1   |
| 14  | SM4041001SB  | SCREW M4 L=10                  |                        | *     |      | 4   |
| 15  | B21160190A0  | PIN ASM.                       |                        | *     |      | 1   |
| 16  | CQ200000000  | OIL WICK                       |                        | *     |      | 0.2 |
| 17  | MAT00509000  | KNIFE DRIVING LEVER            |                        | *     |      | 1   |
| 18  | SS4090615SP  | SCREW 9/64-40 L=6              |                        | *     |      | 1   |
| 19  | D2611555B0B  | CABLE HOLDER B                 |                        | *     |      | 1   |
| 20  | SS7090850SP  | SCREW 9/64-40 L=8              |                        | *     |      | 1   |
| 21  | SS9151630CP  | SCREW 15/64-28 L=15.5          |                        | *     |      | 2   |
| 22  | MAT01601000B | KNIFE BASE SPACER SCREW        |                        |       |      | 2   |
| 23  | MAT015010A0A | KNIFE BASE JUNCTION            |                        |       |      | 1   |
| 24  | MAT01501000A | KNIFE DRIVING SHAFT MOUNTING B |                        | *     |      | 1   |
| 25  | MAT80102T00  | KINFE DRIVING SHAFT BUSHING    |                        | *     |      | 1   |
| 26  | SS4080610SP  | SCREW 1/8-44 L=6.4             |                        | *     |      | 2   |
| 27  | MAT005060A0  | KNIFE DRIVING ARM ASM.         |                        | *     |      | 1   |
| 28  | SS6090810SP  | SCREW 9/64-40 L= 7.5           |                        | *     |      | 1   |
| 29  | SD0500481TP  | HINGE SCREW D= 5 H=4.8         |                        | *     |      | 1   |
| 30  | MAT00504000  | DRIVING SHAFT                  |                        | *     |      | 1   |
| 31  | MAT80105T00  | SPRING                         |                        | *     |      | 1   |
| 32  | WP0510516SD  | WASHER 5.1X7.5X0.5             |                        | *     |      | 2   |
| 33  | RC0410415KP  | C-RING                         |                        | *     |      | 1   |
| 34  | MAT00505000  | KNIFE                          |                        | *     |      | 1   |
| 35  | SS3060410SP  | SCREW 3/32-56 L=4              |                        | *     |      | 2   |
| 36  | MAT81102T00A | KNIFE STOPPER                  |                        | *     |      | 1   |
| 37  | MAT01603000  | SIDE COVER                     | FOR MO-6Δ00S,MO-6900R  |       |      | 1   |
| 38  | MAT01603A00  | SIDE COVER                     | FOR MO-6900G,MO-6900J  |       |      | 1   |
| 39  | MAT04001000  | KNIFE BASE COVER               | FOR MO-6Δ00S,MO-6900G  |       |      | 1   |
| 40  | SS5090610SP  | SCREW 9/64-40 L=6              |                        |       |      | 2   |
| 41  | SS6090810SP  | SCREW 9/64-40 L=7.5            |                        |       |      | 1   |
| 42  | NS6090310SP  | NUT 9/64-40                    |                        |       |      | 1   |
| 43  | MAT81104TA0  | PIPE ASM.                      | FOR SEMI-SUNKEN TABLE  |       |      | 1   |
| 44  | MAT81105T00  | VACUUM ADJUSTING VALVE         | FOR SEMI-SUNKEN TABLE  | *     |      | 1   |
| 45  | MAT81106T00  | VALVE NET                      | FOR SEMI-SUNKEN TABLE  | *     |      | 1   |
| 46  | MAT81104T00  | PIPE                           | FOR SEMI-SUNKEN TABLE  | *     |      | 1   |
| 47  | MAT81104T0B  | PIPE (B)                       | FOR FULLY-SUNKEN TABLE |       |      | 1   |

KNIFE & MAGNET COMPONENTS

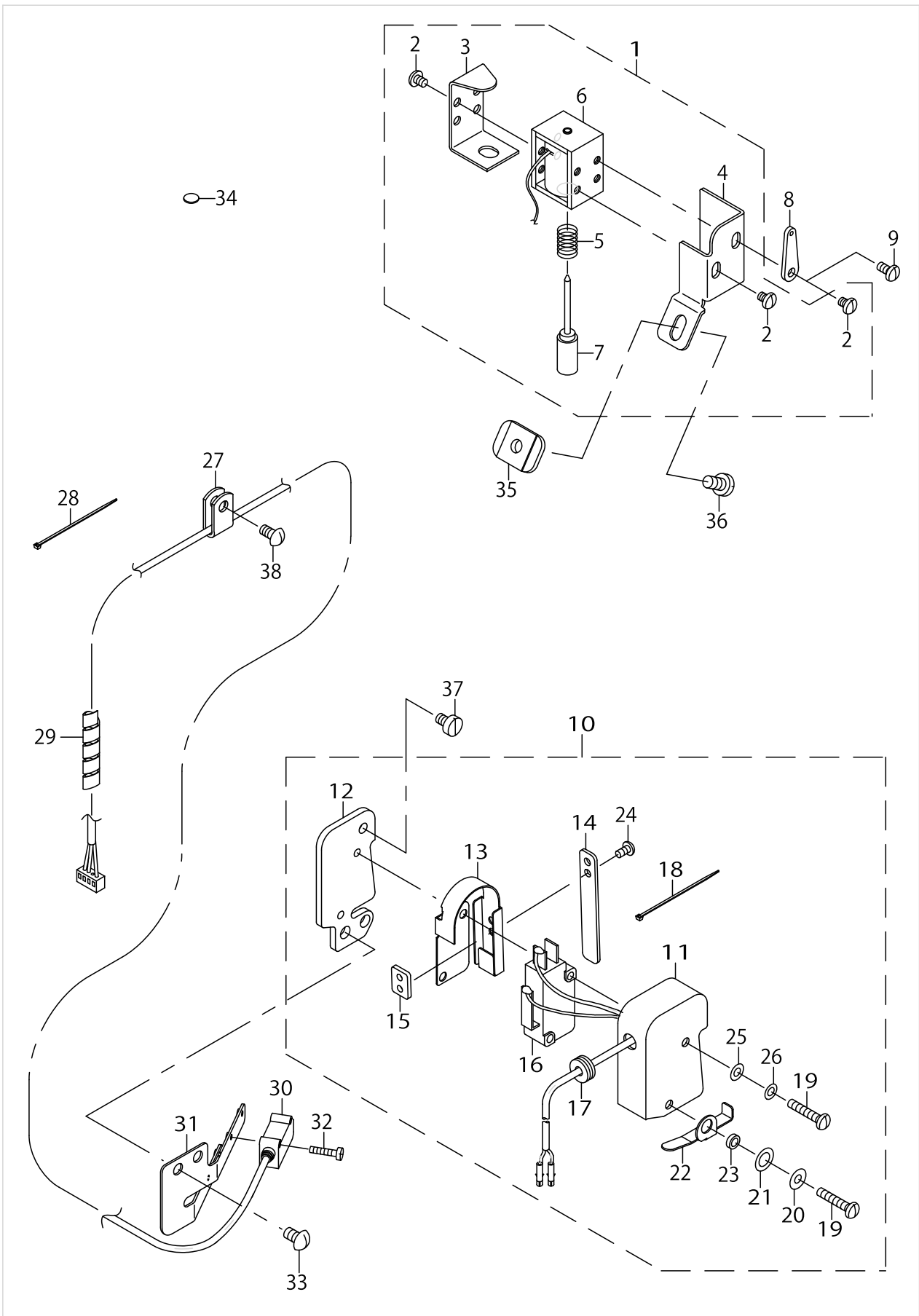


KNIFE & MAGNET COMPONENTS

| No. | Parts No.   | Parts name         | Remarks               | Level | Cons | Qty |
|-----|-------------|--------------------|-----------------------|-------|------|-----|
| 48  | MAT04007000 | KNIFE BASE COVER B | FOR MO-6900R,MO-6900J |       |      | 1   |
| 49  | SS6120940SP | SCREW 3/16-28 L=9  |                       |       |      | 2   |



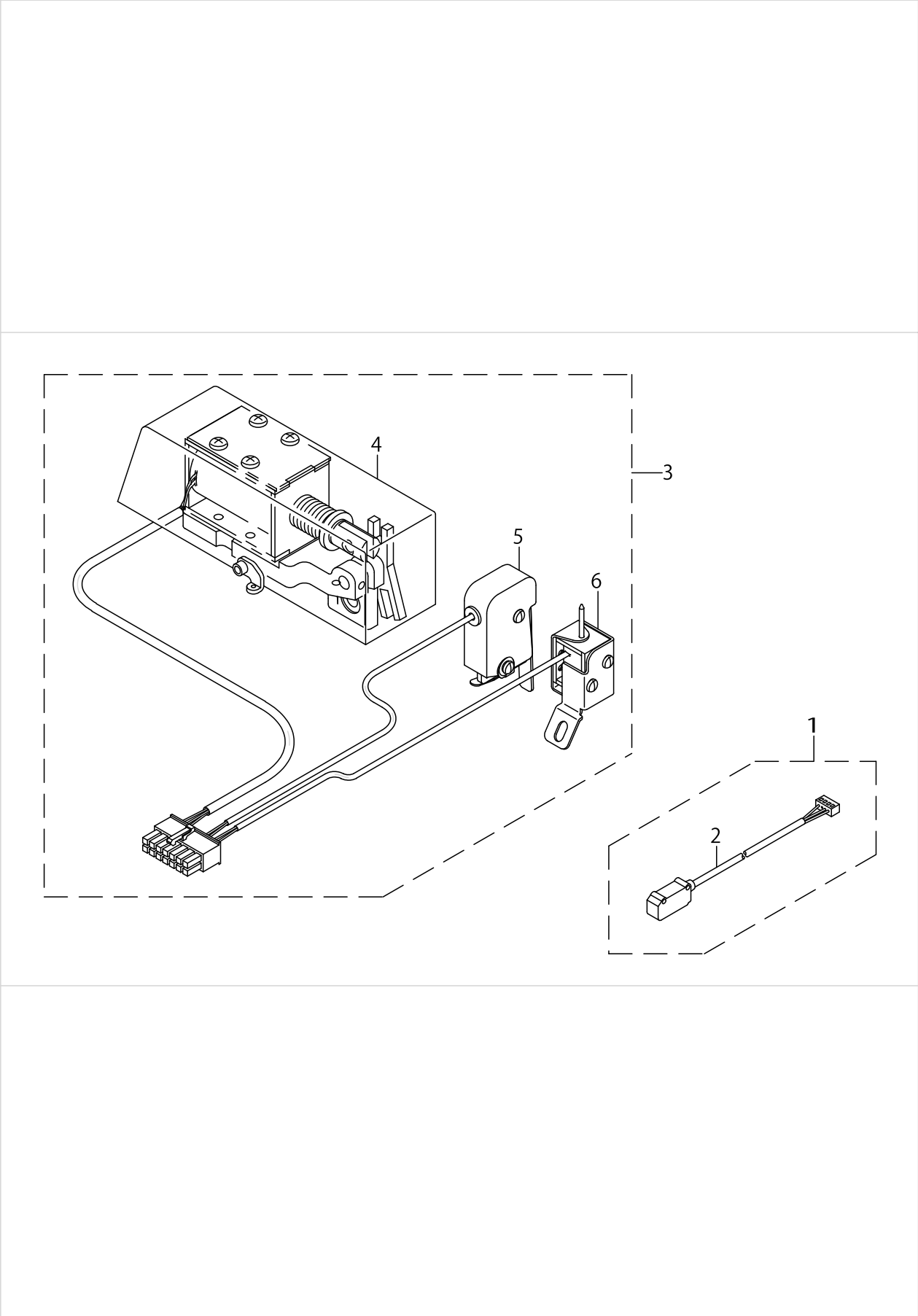
SENSOR & TENSION RELEASE MAGNET COMPONENTS



SENSOR & TENSION RELEASE MAGNET COMPONENTS

| No. | Parts No.    | Parts name                     | Remarks                                            | Level | Cons | Qty |
|-----|--------------|--------------------------------|----------------------------------------------------|-------|------|-----|
| 1   | 40042866     | TENSION RELEASE MAGNET ASM.    |                                                    |       |      | 1   |
| 2   | SM4030401SC  | SCREW M3X0.5 L=4               |                                                    | *     |      | 6   |
| 3   | MAT81125T00A | TENSION RELEASING MAGNET COVER |                                                    | *     |      | 1   |
| 4   | 40009721     | MAGNET ASM.                    |                                                    | *     |      | 1   |
| 5   | MAT81124T00A | SPRING                         |                                                    | *     |      | 1   |
| 6   | MAT01631000  | TENSION RELEASE MAGNET         |                                                    | *     |      | 1   |
| 7   | MAT81123T00A | TENSION RELEASING PLUNGER      |                                                    | *     |      | 1   |
| 8   | MAT01633000  | THREAD GUIDE                   | FOR TWO-NEEDLE<br>OVEREDGER AND<br>SAFETY STITCHER |       |      | 1   |
| 9   | SM4030601SN  | SCREW M3 X 6                   | FOR TWO-NEEDLE<br>OVEREDGER AND<br>SAFETY STITCHER |       |      | 1   |
| 10  | 40042862     | THREAD CUT SWITCH              |                                                    |       |      | 1   |
| 11  | MAT03220000  | SWITCH COVER                   |                                                    | *     |      | 1   |
| 12  | MAT01652000  | SWITCH INSTALLING PLATE        |                                                    | *     |      | 1   |
| 13  | MAT01653000  | SWITCH PUSH PLATE              |                                                    | *     |      | 1   |
| 14  | MAT03902000  | PUSH AUXILIARY PLATE           |                                                    | *     |      | 1   |
| 15  | MAT01663000  | PUSH AUXILIARY REAR PLATE      |                                                    | *     |      | 1   |
| 16  | HA001900000  | MICROSWITCH                    |                                                    | *     |      | 1   |
| 17  | HX000550000  | RUBBER BUSHING                 |                                                    | *     |      | 1   |
| 18  | EA9500B0100  | CABLE BAND                     |                                                    | *     |      | 1   |
| 19  | SM4031601SC  | SCREW M3 L=16                  |                                                    | *     |      | 2   |
| 20  | WP0330501SB  | WASHER M3                      |                                                    | *     |      | 1   |
| 21  | WZ0541510KP  | WAVED WASHER 5.4X9.0X0.3       |                                                    | *     |      | 1   |
| 22  | MAT00614000  | SWITCH STOPPER                 |                                                    | *     |      | 1   |
| 23  | MAT00615000  | STOPPER COLLAR                 |                                                    | *     |      | 1   |
| 24  | SM4860501SC  | SCREW M 2.6 X 5                |                                                    | *     |      | 2   |
| 25  | WT0320001KN  | WASHER                         |                                                    | *     |      | 1   |
| 26  | WP0320500SC  | WASHER M3                      |                                                    | *     |      | 1   |
| 27  | HX001500000  | CLIP                           |                                                    |       |      | 1   |
| 28  | EA9500B0100  | CABLE BAND                     |                                                    |       |      | 2   |
| 29  | G5182120000  | SPIRAL TUBE                    |                                                    |       |      | 0.2 |
| 30  | 40133250     | CLOTH SENSOR ASSY              |                                                    |       |      | 1   |
| 31  | 40022695     | SENSOR BASE                    |                                                    |       |      | 1   |
| 32  | SM6021000TP  | SCREW                          |                                                    |       |      | 2   |
| 33  | SS3090710TP  | SCREW 9/64-40 L=7              |                                                    |       |      | 2   |
| 34  | 40095094     | REFLECTOR                      |                                                    |       |      | 1   |
| 35  | MAT04005000  | MAGNET BASE                    |                                                    |       |      | 1   |
| 36  | SS7110840SP  | SCREW 11/64-40 L=7.8           |                                                    |       |      | 1   |
| 37  | SS6090610SP  | SCREW 9/64-40 L= 5.5           |                                                    |       |      | 1   |
| 38  | SS3090710TP  | SCREW 9/64-40 L=7              |                                                    |       |      | 1   |

SENSOR, SWITCH & SOLENOID COMPONENTS



SENSOR,SWITCH & SOLENOID COMPONENTS

| No. | Parts No.   | Parts name                  | Remarks | Level | Cons | Qty |
|-----|-------------|-----------------------------|---------|-------|------|-----|
| 1   | 40133250    | CLOTH SENSOR ASSY           |         |       |      | 1   |
| 2   | HD002840000 | SENSOR                      |         | *     |      | 1   |
| 3   | 40133251    | ACTUATOR ASSY               |         |       |      | 1   |
| 4   | 40133253    | THREAD CUTTER MAGNET ASSY   |         | *     |      | 1   |
| 5   | 40042862    | THREAD CUT SWITCH           |         | *     |      | 1   |
| 6   | 40042866    | TENSION RELEASE MAGNET ASM. |         | *     |      | 1   |

## HOW TO MAKE USE OF THIS PARTS LIST

1.As to "#01" and "#02" refer to the "Note" given at the bottom of the respective pages.

2.Codes on the "Qty" column

- Each numeral indicates the number of parts required.
- "0.1" and "2.5" indicate the length (in meters) of the respective parts.

3.Parentheses mean that the corresponding part is a subpart that constructs an assembly part.

4.Dotted lines on the Figures indicate assembly parts.

1. リストページの# 0 1、# 0 2の印は、ページ下の"注記"の説明を参照下さい。
2. 数量欄の数字は、個数を表し、0. 1、2. 5等の数値は、長さ（単位メートル）を表します。
3. 数量欄の（ ）は、組部品を構成している子部品であることを意味します。
4. イラストページの-----枠は、組構成であることを意味します。

NUMERICAL INDEX OF PARTS

| PART NO      | PAGE | REF NO. | PART NO      | PAGE | REF NO. | PART NO     | PAGE | REF NO. |
|--------------|------|---------|--------------|------|---------|-------------|------|---------|
| 40009721     | 8    | 4       | MAT01653000  | 8    | 13      | SS7110840SP | 8    | 36      |
| 40022695     | 8    | 31      | MAT01663000  | 8    | 15      | SS9151630CP | 4    | 21      |
| 40042862     | 8    | 10      | MAT03218000B | 4    | 13      | WP0320500SC | 8    | 26      |
| 40042862     | 10   | 5       | MAT03219000  | 4    | 6       | WP0330501SB | 8    | 20      |
| 40042866     | 8    | 1       | MAT03220000  | 8    | 11      | WP0510516SD | 4    | 32      |
| 40042866     | 10   | 6       | MAT03902000  | 8    | 14      | WS0411002KS | 4    | 12      |
| 40095094     | 8    | 34      | MAT04001000  | 4    | 39      | WT0320001KN | 8    | 25      |
| 40133250     | 8    | 30      | MAT04005000  | 8    | 35      | WZ0541510KP | 8    | 21      |
| 40133250     | 10   | 1       | MAT04007000  | 6    | 48      |             |      |         |
| 40133251     | 10   | 3       | MAT80102T00  | 4    | 25      |             |      |         |
| 40133252     | 4    | 7       | MAT80105T00  | 4    | 31      |             |      |         |
| 40133253     | 4    | 1       | MAT80114T00  | 4    | 8       |             |      |         |
| 40133253     | 10   | 4       | MAT80115T00  | 4    | 10      |             |      |         |
| 40133260     | 2    | 1·3·5·7 | MAT81102T00A | 4    | 36      |             |      |         |
| 40133261     | 2    | 2·4·6·8 | MAT81104T00  | 4    | 46      |             |      |         |
| 40133262     | 2    | 1·3·5·7 | MAT81104T0B  | 4    | 47      |             |      |         |
| 40133263     | 2    | 2·4·6·8 | MAT81104TA0  | 4    | 43      |             |      |         |
| 40133264     | 2    | 1·3·5·7 | MAT81105T00  | 4    | 44      |             |      |         |
| 40133265     | 2    | 2·4·6·8 | MAT81106T00  | 4    | 45      |             |      |         |
| 40133266     | 2    | 1·3·5·7 | MAT81123T00A | 8    | 7       |             |      |         |
| 40133267     | 2    | 2·4·6·8 | MAT81124T00A | 8    | 5       |             |      |         |
| B21160190A0  | 4    | 15      | MAT81125T00A | 8    | 3       |             |      |         |
| B2526704000  | 4    | 4       | MAT81132T00  | 4    | 2       |             |      |         |
| CQ200000000  | 4    | 16      | NM6040001SE  | 4    | 11      |             |      |         |
| D2611555B0B  | 4    | 19      | NS6090310SP  | 4    | 42      |             |      |         |
| EA9500B0100  | 8    | 28      | RC0410415KP  | 4    | 33      |             |      |         |
| G5182120000  | 8    | 29      | RE0300000K0  | 4    | 9       |             |      |         |
| HA001900000  | 8    | 16      | SD0500481TP  | 4    | 29      |             |      |         |
| HD002840000  | 10   | 2       | SM4030401SC  | 8    | 2       |             |      |         |
| HX000550000  | 8    | 17      | SM4030601SN  | 8    | 9       |             |      |         |
| HX001500000  | 8    | 27      | SM4031601SC  | 8    | 19      |             |      |         |
| MAT00504000  | 4    | 30      | SM4040601SB  | 4    | 3       |             |      |         |
| MAT00505000  | 4    | 34      | SM4041001SB  | 4    | 14      |             |      |         |
| MAT005060A0  | 4    | 27      | SM4860501SC  | 8    | 24      |             |      |         |
| MAT00509000  | 4    | 17      | SM6021000TP  | 8    | 32      |             |      |         |
| MAT00614000  | 8    | 22      | SS3060410SP  | 4    | 35      |             |      |         |
| MAT00615000  | 8    | 23      | SS3090710TP  | 8    | 38      |             |      |         |
| MAT01501000A | 4    | 24      | SS4080610SP  | 4    | 26      |             |      |         |
| MAT015010A0A | 4    | 23      | SS4090615SP  | 4    | 18      |             |      |         |
| MAT01601000B | 4    | 22      | SS5090610SP  | 4    | 40      |             |      |         |
| MAT01603000  | 4    | 37·38   | SS6090610SP  | 8    | 37      |             |      |         |
| MAT01603A00  | 4    | 37·38   | SS6090630SP  | 4    | 5       |             |      |         |
| MAT01631000  | 8    | 6       | SS6090810SP  | 4    | 41      |             |      |         |
| MAT01633000  | 8    | 8       | SS6120940SP  | 6    | 49      |             |      |         |
| MAT01652000  | 8    | 12      | SS7090850SP  | 4    | 20      |             |      |         |