

MODEL : AK-145

List No : 1569-00

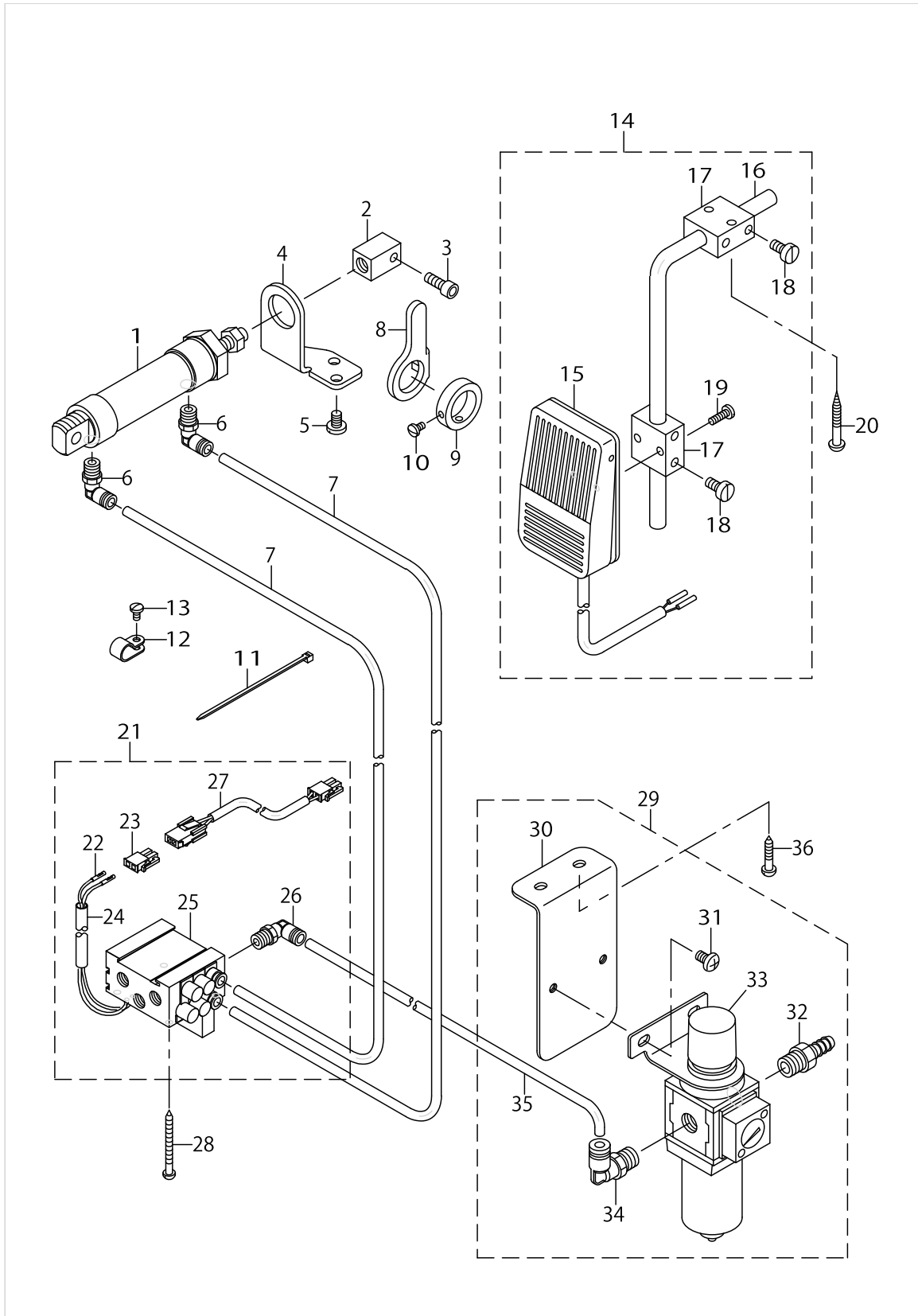
# PARTS LIST

Published:09/10/2017

## CONTENTS

---

AK-145 .....	1
HOW TO MAKE USE OF THIS PARTS LIST .....	3



## AK-145

No.	Parts No.	Parts name	Remarks	Level	Cons	Qty
1	PA2502503A0	CYLINDER ASM.				1
2	10090009	CYLINDER BLOCK				1
3	SS6151612TP	SCREW				1
4	10090108	CYLINDER SUPPORT				1
5	SS7150910TP	SCREW 15/64-28 L=9				2
6	GAK29010000	ELBOW B				2
7	BT0600401EB	TUBE				2
8	10090306	PRESSER BAR LIFTING ARM				1
9	10090405	PRESSER BAR LIFTING RING				1
10	SS7110710SP	SCREW 11/64-40 L=7				2
11	GES12153000	OIL WICK HOLDER				1
12	MAZ02508000	CORD HOLDER				4
13	SS7110710SP	SCREW 11/64-40 L=7				2
14	40025036	KNEE SWITCH ASM.	FOR AK-145C			1
15	40025035	KNEE SWITCH ASM.		*		1
16	MAT80231T00	DRIVING BAR, T002		*		1
17	MAT80230T00	KNEE SWITCH SUPPORT BASE		*		2
18	SS6151220SP	SCREW 15/64-28 L=11.5		*		4
19	SS7111410SP	SCREW 11/64-40 L=14		*		2
20	SK3514000SC	WOOD SCREW D=5.1 L=40	FOR AK-145C			2
21	40103008	AIR APPARATUS ASM.				1
22	HK03464000A	TERMINAL, FEMALE		*		2
23	HK034610020	2-POLE NYLON PLUG		*		1
24	GAKA1503000	INSULATION TUBE		*		0.2
25	40038904	MAGNETIC VALVE(P)		*		1
26	GAK29010000	ELBOW B		*		1
27	GAKA14020A0	CORD ASM.		*		1
28	SK3385001SE	WOOD SCREW D=3.8 L=50				4
29	40038722	FILTER REGULATOR ASM.				1
30	40038723	FILTER REGULATOR MOUNTING PLATE		*		1
31	SM4061001SB	SCREW M6 L=10		*		2
32	GAK29011000	NIPPLE		*		1
33	PF0552170A0	FILTER REGULATOR		*		1
34	GAK29009000	ELBOW		*		1
35	BT0600401EB	TUBE		*		0.28
36	SK3482501SE	WOOD SCREW D=4.8 L=25				2

## HOW TO MAKE USE OF THIS PARTS LIST

1.As to "#01" and "#02" refer to the "Note" given at the bottom of the respective pages.

2.Codes on the "Qty" column

- Each numeral indicates the number of parts required.
- "0.1" and "2.5" indicate the length (in meters) of the respective parts.

3.Parentheses mean that the corresponding part is a subpart that constructs an assembly part.

4.Dotted lines on the Figures indicate assembly parts.

1. リストページの# 0 1、# 0 2の印は、ページ下の"注記"の説明を参照下さい。
2. 数量欄の数字は、個数を表し、0. 1、2. 5等の数値は、長さ（単位メートル）を表します。
3. 数量欄の（ ）は、組部品を構成している子部品であることを意味します。
4. イラストページの-----枠は、組構成であることを意味します。

## NUMERICAL INDEX OF PARTS

PART NO	PAGE	REF NO.
10090009	2	2
10090108	2	4
10090306	2	8
10090405	2	9
40025035	2	15
40025036	2	14
40038722	2	29
40038723	2	30
40038904	2	25
40103008	2	21
BT0600401EB	2	35
GAK29009000	2	34
GAK29010000	2	26
GAK29011000	2	32
GAKA14020A0	2	27
GAKA1503000	2	24
GES12153000	2	11
HK034610020	2	23
HK03464000A	2	22
MAT80230T00	2	17
MAT80231T00	2	16
MAZ02508000	2	12
PA2502503A0	2	1
PF0552170A0	2	33
SK3385001SE	2	28
SK3482501SE	2	36
SK3514000SC	2	20
SM4061001SB	2	31
SS6151220SP	2	18
SS6151612TP	2	3
SS7110710SP	2	13
SS7111410SP	2	19
SS7150910TP	2	5