

MODEL : SC-922 (For China)

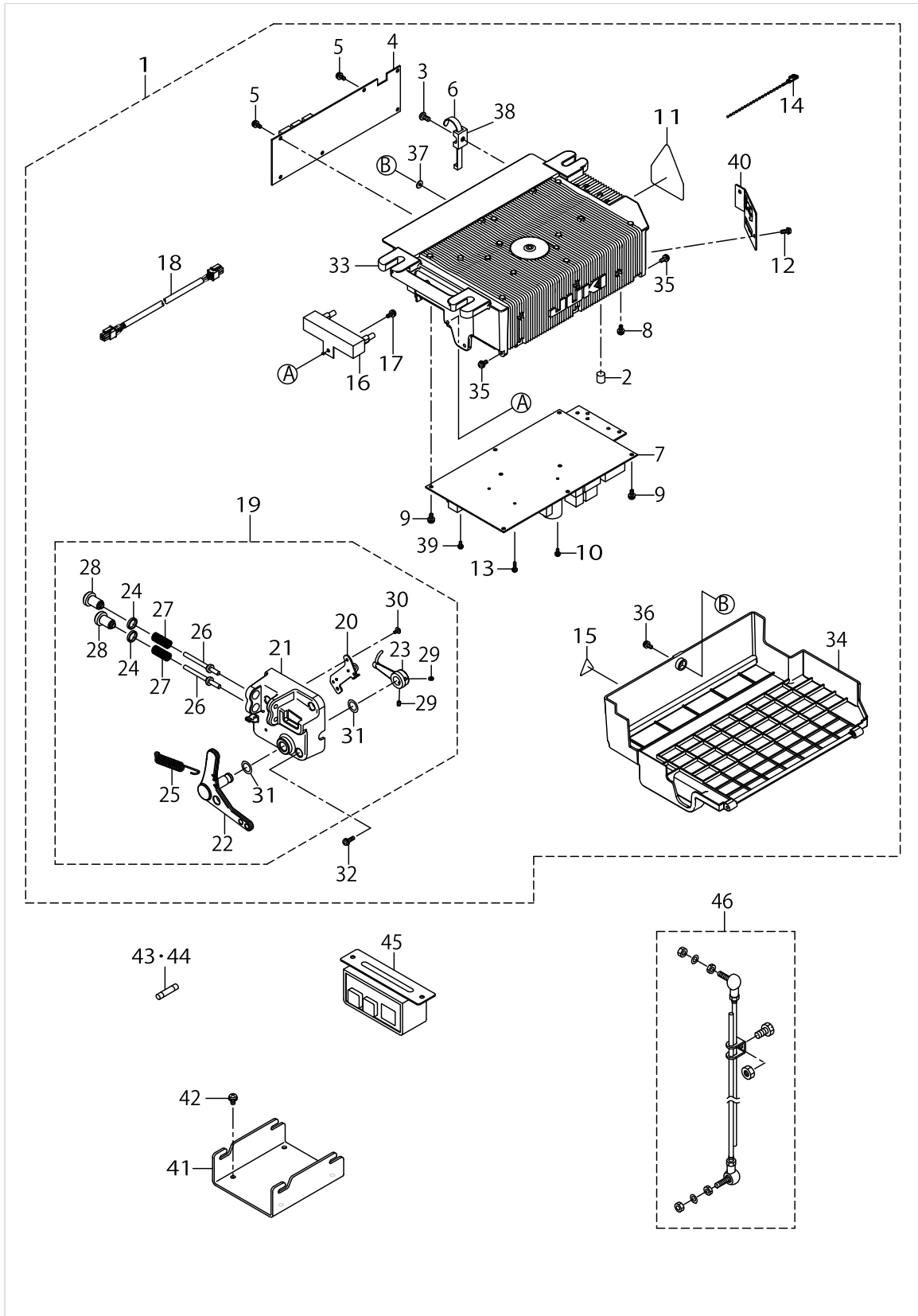
List No : 1558-02

PARTS LIST

Published:11/30/2017

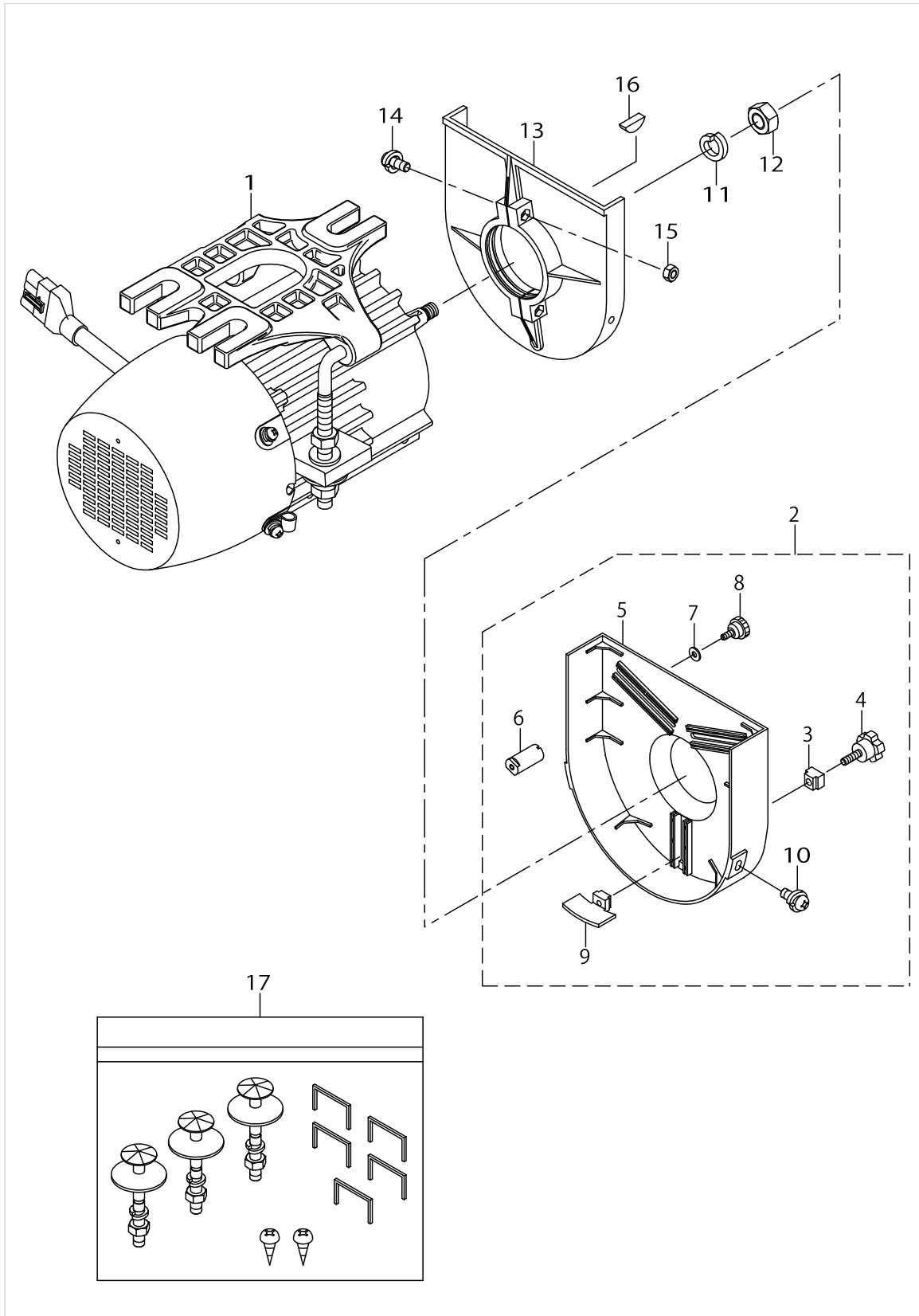
CONTENTS

SC-922	1
M51N	3
HOW TO MAKE USE OF THIS PARTS LIST	5



SC-922

No.	Parts No.	Parts name	Remarks	Level	Cons	Qty
1	40101495	PSC UNIT 1PHASE 220-240V PFL				1
2	40088316	RUBBER_CUSHION		*		2
3	SM4051001SC	SCREW M5 L=10		*		1
4	40101476	CTL_PCB ASSY		*		1
5	SL4041081SC	SCREW M4 L=10		*		6
6	KX000000230	RELEASIBLE CABLE TIE		*		1
7	40101479	PWR-S_PCB ASSY		*		1
8	SL4040881SC	SCREW M4 L=8		*		3
9	SL4041081SC	SCREW M4 L=10		*		10
10	SL4030881SC	SCREW M3 L=8		*		1
11	CM300400602	VOLTAGE CAUTION LABEL L=25		*		1
12	SL4041081SC	SCREW M4 L=10		*		2
13	SL4031081SC	SCREW M3 L=10		*		2
14	KX000000280	BEAD BAND		*		2
15	CM300100003	VOLTAGE WARNING LABEL(25)		*		1
16	40087154	RESISTANCE_A_ASSY		*		1
17	SL4041091SC	SCREW M4 L=10		*		1
18	40087153	DC POWER SUPPLY CORD ASSY		*		1
19	40087155	PEDAL_SENSOR_A_ASSY		*		1
20	40087159	SENSOR COIL HOLD A ASSY		*		1
21	40042130	PEDAL_SENSOR_BASE		*		1
22	40087156	PEDAL_LEVER_A		*		1
23	40042133	PEDAL_LEVER_B		*		1
24	40006202	ADJUST_NUT		*		2
25	40006207	FRONT_SPRING		*		1
26	40006208	SPRING_SHAFT_A		*		2
27	40049426	SPRING_C		*		2
28	40006212	ADJUST_SCREW		*		2
29	SM8040612TP	SCREW M4 L=6		*		2
30	SV4030601SR	SCREW M3 L=6		*		2
31	40088315	THRUST COLLAR		*		2
32	SL4041491SC	SCREW M4 L=14		*		3
33	40087165	FRAME_A		*		1
34	40087167	UNDER_COVER		*		1
35	40087157	HING SCREW		*		2
36	SL4041681SC	SCREW M4 L=16		*		1
37	M8002430000	STOPPER		*		1
38	KX000000210	SADDLE TYPE TIE MOUNT		*		1
39	SL4030881SC	SCREW M3 L=8		*		1
40	40087168	HOUSING_PLATE_A		*		1
41	40099916	BOX_HANGER				1
42	SL4051091SC	SCREW M5X0.8 L=10				4
43	KF000000080	SLO-BLO FUSE				1
44	KF000000030	SLO-BLO FUSE				1
45	40102693	AC POWER SUPPLY CORD C				1
46	M4501471AA0	CONNECTING ROD A ASM.				1



M51N

No.	Parts No.	Parts name	Remarks	Level	Cons	Qty
1	40102019	M51N MOTOR UNIT A				1
2	40018509	M50 MOTOR BELT COVER ASSY				1
3	40018572	DROPPING PAD		*		1
4	40018573	SCREW		*		1
5	40018514	PULLEY COVER A		*		1
6	40018568	SUPPORTING ROD		*		1
7	40018569	WASHER		*		1
8	40018570	SCREW		*		1
9	40018571	DROPPING PLATE		*		1
10	40018574	SCREW		*		2
11	40018579	WASHER				1
12	40018580	NUT				1
13	40018567	PULLEY COVER B				1
14	40018575	SCREW				2
15	40018576	NUT				2
16	40018578	KEY				1
17	40018582	MOUNTING BOLT ASM.				1

HOW TO MAKE USE OF THIS PARTS LIST

1.As to "#01" and "#02" refer to the "Note" given at the bottom of the respective pages.

2.Codes on the "Qty" column

- Each numeral indicates the number of parts required.
- "0.1" and "2.5" indicate the length (in meters) of the respective parts.

3.Parentheses mean that the corresponding part is a subpart that constructs an assembly part.

4.Dotted lines on the Figures indicate assembly parts.

1. リストページの# 0 1、# 0 2の印は、ページ下の“注記”の説明を参照下さい。
2. 数量欄の数字は、個数を表し、0. 1、2. 5等の数値は、長さ（単位メートル）を表します。
3. 数量欄の（ ）は、組部品を構成している子部品であることを意味します。
4. イラストページの-----枠は、組構成であることを意味します。

NUMERICAL INDEX OF PARTS

PART NO	PAGE	REF NO.	PART NO	PAGE	REF NO.
40006202	2	24	KX000000230	2	6
40006207	2	25	KX000000280	2	14
40006208	2	26	M4501471AA0	2	46
40006212	2	28	M8002430000	2	37
40018509	4	2	SL4030881SC	2	39
40018514	4	5	SL4031081SC	2	13
40018567	4	13	SL4040881SC	2	8
40018568	4	6	SL4041081SC	2	12
40018569	4	7	SL4041091SC	2	17
40018570	4	8	SL4041491SC	2	32
40018571	4	9	SL4041681SC	2	36
40018572	4	3	SL4051091SC	2	42
40018573	4	4	SM4051001SC	2	3
40018574	4	10	SM8040612TP	2	29
40018575	4	14	SV4030601SR	2	30
40018576	4	15			
40018578	4	16			
40018579	4	11			
40018580	4	12			
40018582	4	17			
40042130	2	21			
40042133	2	23			
40049426	2	27			
40087153	2	18			
40087154	2	16			
40087155	2	19			
40087156	2	22			
40087157	2	35			
40087159	2	20			
40087165	2	33			
40087167	2	34			
40087168	2	40			
40088315	2	31			
40088316	2	2			
40099916	2	41			
40101476	2	4			
40101479	2	7			
40101495	2	1			
40102019	4	1			
40102693	2	45			
CM300100003	2	15			
CM300400602	2	11			
KF000000030	2	43-44			
KF000000080	2	43-44			
KX000000210	2	38			