

MODEL : SC-922/M51N

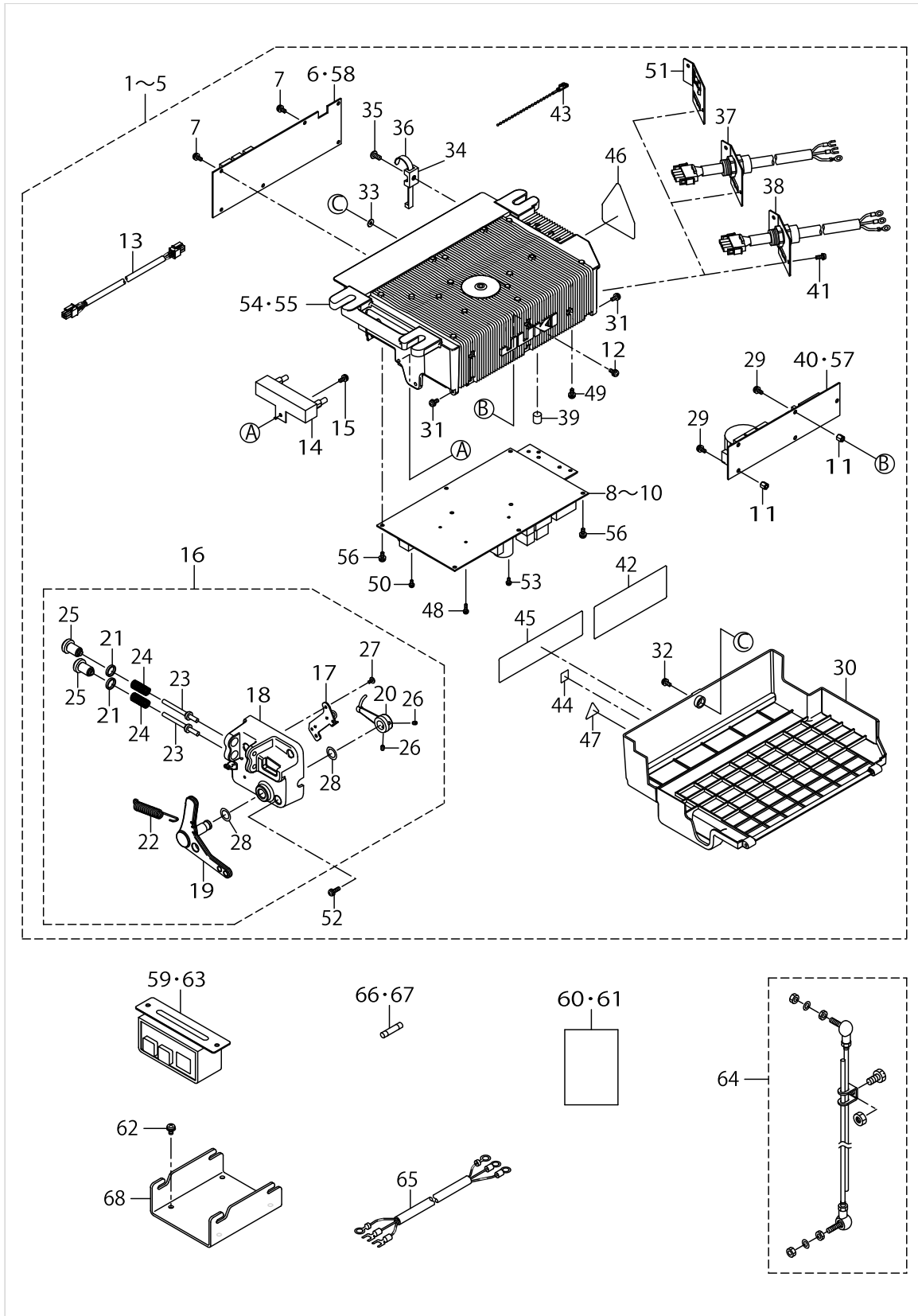
List No : 1557-03

PARTS LIST

Published:11/30/2017

CONTENTS

SC-922 (M51 IS USED.).....	1
SC-922 (DIRECT MOTOR IS USED.).....	5
M51N	9
REACTOR BOX 1P (FOR CE).....	11
HOW TO MAKE USE OF THIS PARTS LIST	13



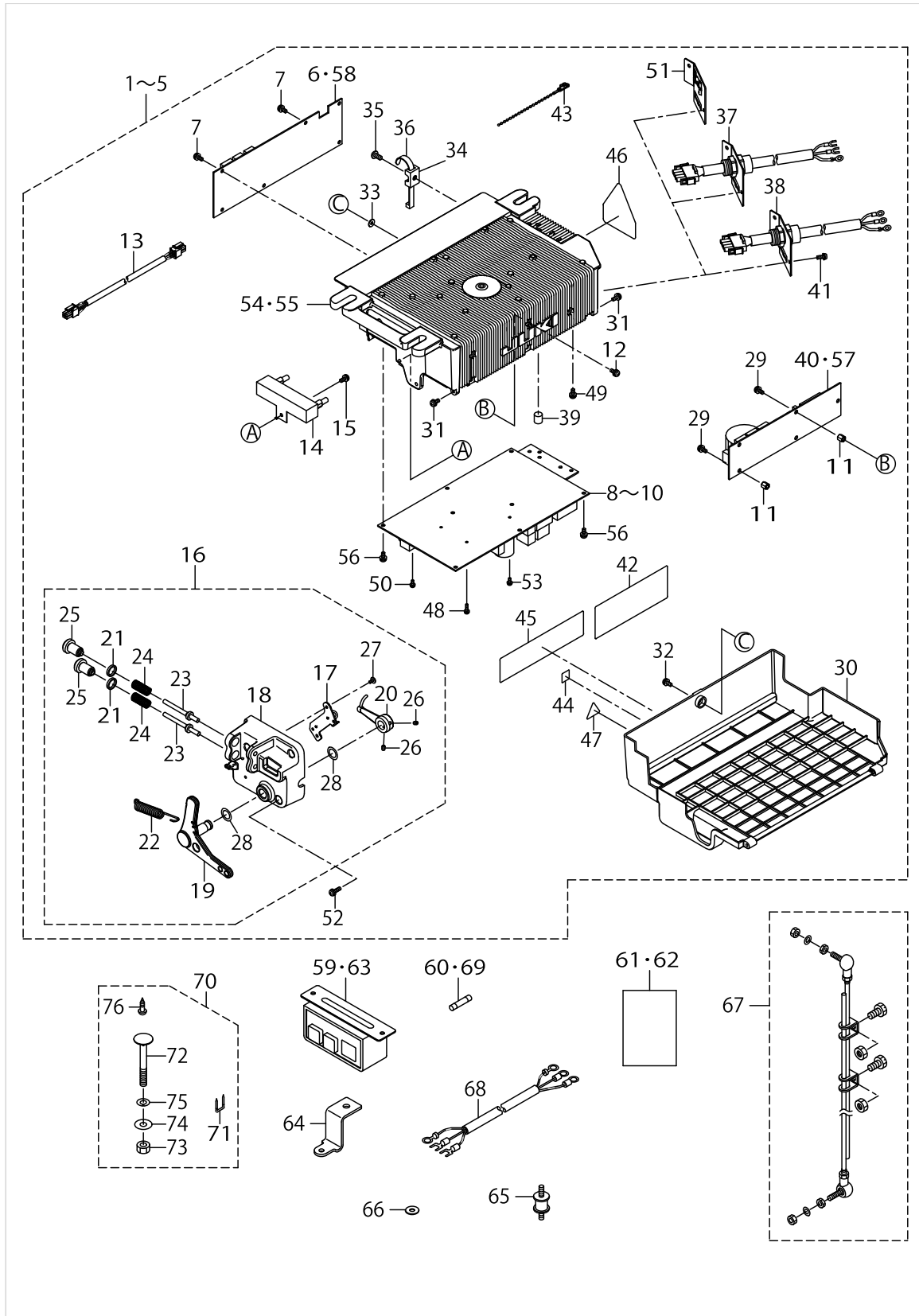
SC-922 (M51 IS USED.)

No.	Parts No.	Parts name	Remarks	Level	Cons	Qty
1	40101488	SC-922 1PHASE 220-240V CE PFL NO-OPT	FOR 1-PHASE 220~240V CE PFL			1
2	40101489	SC-922 1PHASE 220-240V PFL NO-OPT	FOR 1-PHASE 220~240V PFL			1
3	40101490	SC-922 3PHASE 200-240V PFL NO-OPT	FOR 3-PHASE 200~240V PFL			1
4	40101491	SC-922 3PHASE 200-240V PFL NO-OPT JA	FOR 3-PHASE 200~240V PFL JA			1
5	40101492	SC-922 1PHASE 100-120V PFL NO-OPT JA_LA	FOR 1-PHASE 100~120V PFL JA LA			1
6	40101476	CTL PCB ASSY		*		1
7	SL4041081SC	SCREW M4 L=10		*		6
8	40101485	PWR-CE PCB ASSY	FOR 1-PHASE 220~240V CE PFL	*		1
9	40101479	PWR-S PCB ASSY	FOR 1-PHASE 220~240V PFL	*		1
10	40101482	PWR-T PCB ASSY	FOR 3-PHASE 200~240V PFL, 3-PHASE 200~240V PFL JA, 1-PHASE 100~120V PFL JA LA	*		1
11	40088311	STUD	FOR 1-PHASE 220~240V CE PFL, 3-PHASE 200~240V PFL, 3-PHASE 200~240V PFL JA, 1-PHASE 100~120V PFL JA LA	*		5
12	SL4041081SC	SCREW M4 L=10	FOR 1-PHASE 220~240V CE PFL, 3-PHASE 200~240V PFL, 3-PHASE 200~240V PFL JA, 1-PHASE 100~120V PFL JA LA	*		5
13	40087153	DC POWER SUPPLY CORD ASSY		*		1
14	40087154	RESISTANCE A ASSY		*		1
15	SL4041091SC	SCREW M4 L=10		*		1
16	40087155	PEDAL SENSOR A ASSY		*		1
17	40087159	SENSOR COIL HOLD A ASSY		*		1
18	40042130	PEDAL SENSOR BASE		*		1
19	40087156	PEDAL LEVER A		*		1
20	40042133	PEDAL LEVER B		*		1
21	40006202	ADJUST NUT		*		2
22	40006207	FRONT SPRING		*		1
23	40006208	SPRING SHAFT A		*		2
24	40049426	SPRING C		*		2
25	40006212	ADJUST SCREW		*		2
26	SM8040612TP	SCREW M4 L=6		*		2
27	SV4030601SR	SCREW M3 L=6		*		2
28	40088315	THRUST COLLAR		*		2
29	SL4040681SC	COMBINATION SCREW M4X8		*		5
30	40087167	UNDER COVER		*		1
31	40087157	HINGE SCREW		*		2
32	SL4041681SC	SCREW M4 L=16		*		1
33	M8002430000	STOPPER		*		1
34	KX000000210	SADDLE TYPE TIE MOUNT		*		1
35	SM4051001SC	SCREW M5 L=10		*		1
36	KX000000230	RELEASIBLE CABLE TIE		*		1
37	40088035	POWER SUPPLY PLATE ASSY CE	FOR 1-PHASE 220~240V CE PFL	*		1
38	40089563	POWER SUPPLY PLATE ASSY LA	FOR 1-PHASE 100~120V PFL JA LA	*		1
39	40088316	RUBBER CUSHION		*		2
40	40087139	FLT-T PCB ASSY	FOR 3-PHASE 200~240V PFL, 3-PHASE 200~240V PFL JA, 1-PHASE 100~120V PFL JA LA	*		1
41	SL4041081SC	SCREW M4 L=10		*		2
42	CM300100402	VOLTAGE DANGER LABEL(SMALL)	FOR 3-PHASE 200~240V PFL, 3-PHASE 200~240V PFL JA, 1-PHASE 100~120V PFL JA LA	*		1
43	KX000000280	BEAD BAND		*		2
44	CM600100101	WEEE MARK LABEL S	FOR 1-PHASE 220~240V CE PFL	*		1

SC-922 (M51 IS USED.)

No.	Parts No.	Parts name	Remarks	Level	Cons	Qty
45	CM300100302	VOLTAGE DANGER LABEL(SMALL)	FOR 1-PHASE 220~240V CE PFL	*		1
46	CM300400602	VOLTAGE CAUTION LABEL L=25		*		1
47	CM300100003	VOLTAGE WARNING LABEL(25)	FOR 1-PHASE 220~240V PFL	*		1
48	SL4031081SC	SCREW M3 L=10		*		2
49	SL4040881SC	SCREW M4 L=8		*		3
50	SL4030881SC	SCREW M3 L=8		*		1
51	40087168	HOUSING PLATE A	FOR 1-PHASE 220~240V PFL, 3-PHASE 200~240V PFL, 3-PHASE 200~240V PFL JA	*		1
52	SL4041491SC	SCREW 4 L=14		*		3
53	SL4030881SC	SCREW M3 L=8	FOR 1-PHASE 220~240V PFL	*		1
54	40087166	FRAME B	FOR 1-PHASE 220~240V CE PFL, 3-PHASE 200~240V PFL, 3-PHASE 200~240V PFL JA, 1-PHASE 100~120V PFL JA LA	*		1
55	40087165	FRAME A	FOR 1-PHASE 220~240V PFL	*		1
56	SL4041081SC	SCREW M4 L=10		*		10
57	40162977	FLT-CE PCB ASSY	FOR 1-PHASE 220~240V CE PFL	*		1
58	40162974	CTL_PCB_ASSY_CE	FOR 1-PHASE 220~240V CE PFL	*		1
59	40089414	AC POWER SUPPLY CORD D	FOR 3-PHASE 200~240V PFL JA			1
60	40091952	EC DECLARATION (BOX)	FOR 1-PHASE 220~240V CE PFL			1
61	CM600100201	WEEE INFORMATION SHEET	FOR 1-PHASE 220~240V CE PFL			1
62	SL4051091SC	SCREW M5X0.8 L=10				4
63	40102693	AC POWER SUPPLY CORD C	FOR 1-PHASE 220~240V PFL			1
64	M4501471AA0	CONNECTING ROD A ASM.				1
65	M6102461DAA	AC INPUT CABLE ASM.(CE)	FOR 1-PHASE 220~240V CE PFL			1
66	KF000000080	SLO-BLO FUSE				1
67	KF000000030	SLO-BLO FUSE				1
68	40099916	BOX HANGER				1

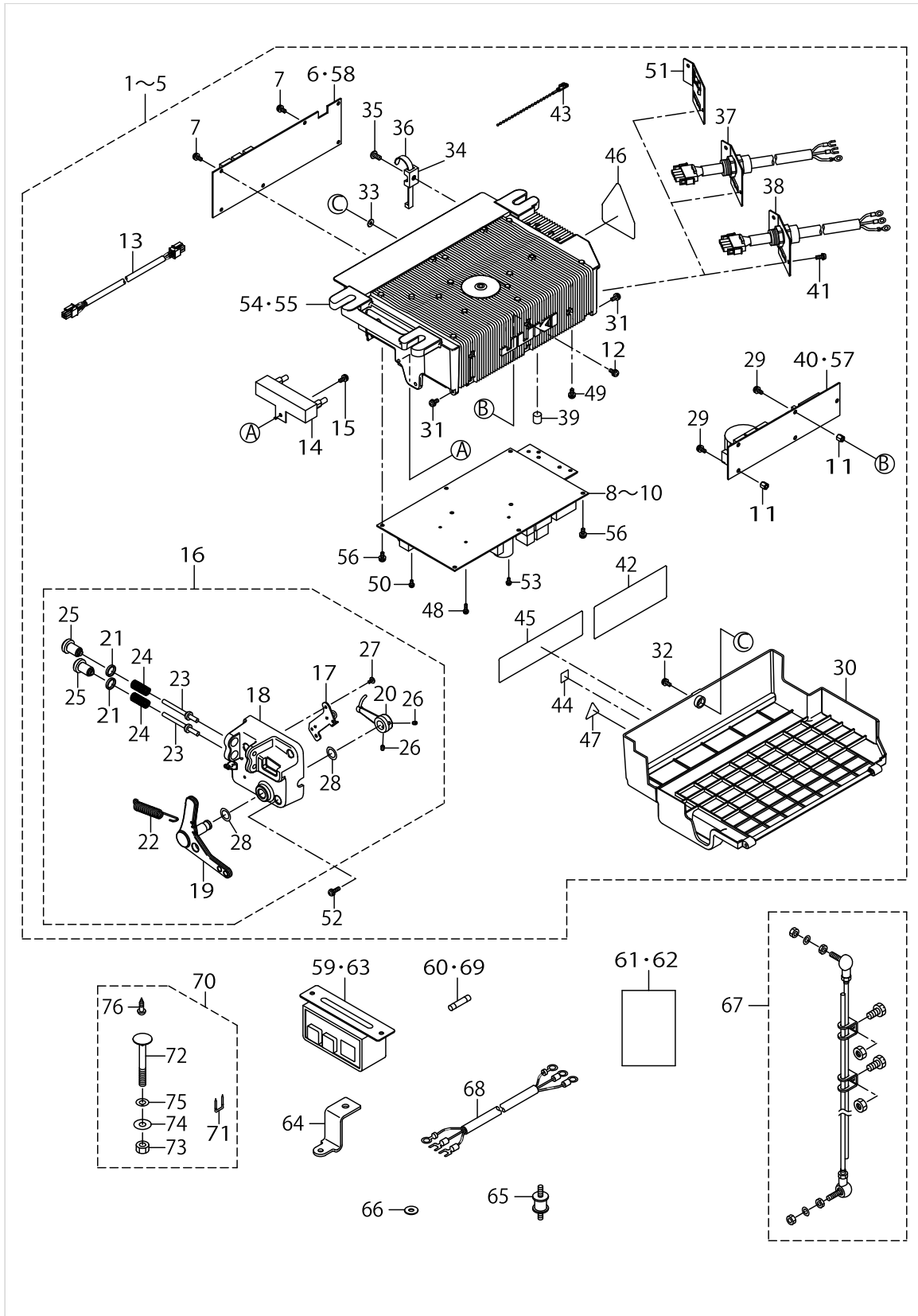
SC-922 (DIRECT MOTOR IS USED.)



SC-922 (DIRECT MOTOR IS USED.)

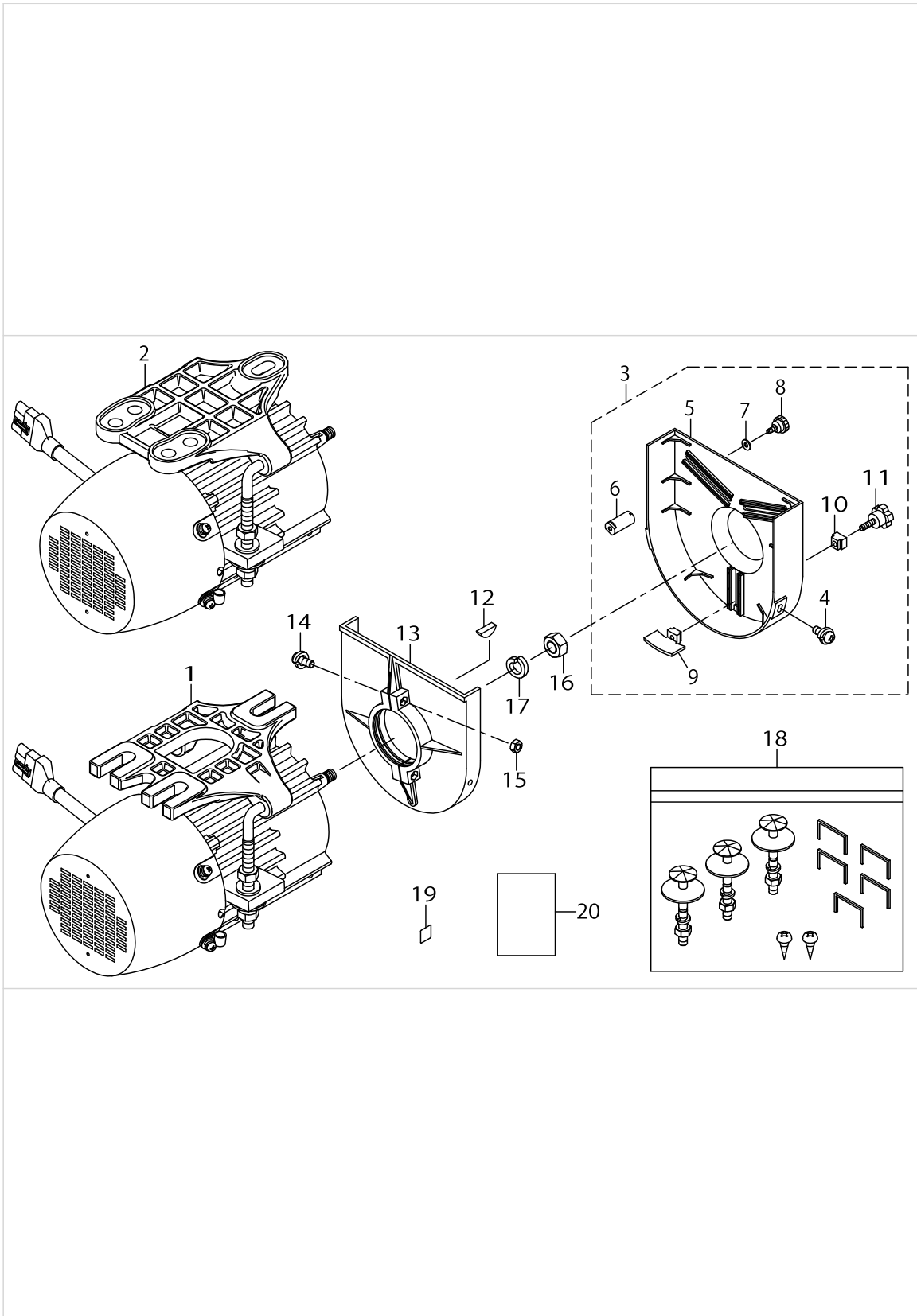
No.	Parts No.	Parts name	Remarks	Level	Cons	Qty
1	40126245	SC-922 DD 1P 220-240V CE PFL NO-OPT	FOR 1-PHASE 220~240V CE PFL			1
2	40126246	SC-922 DD 1P 220-240V PFL NO-OPT	FOR 1-PHASE 220~240V PFL			1
3	40126247	SC-922 DD 3P 200-240V PFL NO-OPT	FOR 3-PHASE 200~240V PFL			1
4	40126248	SC-922 DD 3P 200-240V PFL NO-OPT JA	FOR 3-PHASE 200~240V PFL JA			1
5	40126249	SC-922 DD 1P 100-120V PFL NO-OPT JA_LA	FOR 1-PHASE 100~120V PFL JA_LA			1
6	40101476	CTL PCB ASSY		*		1
7	SL4041081SC	SCREW M4 L=10		*		6
8	40101485	PWR-CE PCB ASSY	FOR 1-PHASE 220~240V CE PFL	*		1
9	40101479	PWR-S PCB ASSY	FOR 1-PHASE 220~240V PFL	*		1
10	40101482	PWR-T PCB ASSY	FOR 3-PHASE 200~240V PFL, 3-PHASE 200~240V PFL JA, 1-PHASE 100~120V PFL JA_LA	*		1
11	40088311	STUD	FOR 1-PHASE 220~240V CE PFL, 3-PHASE 200~240V PFL, 3-PHASE 200~240V PFL JA, 1-PHASE 100~120V PFL JA_LA	*		5
12	SL4041081SC	SCREW M4 L=10	FOR 1-PHASE 220~240V CE PFL, 3-PHASE 200~240V PFL, 3-PHASE 200~240V PFL JA, 1-PHASE 100~120V PFL JA_LA	*		5
13	40087153	DC POWER SUPPLY CORD ASSY		*		1
14	40087154	RESISTANCE A ASSY		*		1
15	SL4041091SC	SCREW M4 L=10		*		1
16	40087155	PEDAL SENSOR A ASSY		*		1
17	40087159	SENSOR COIL HOLD A ASSY		*		1
18	40042130	PEDAL SENSOR BASE		*		1
19	40087156	PEDAL LEVER A		*		1
20	40042133	PEDAL LEVER B		*		1
21	40006202	ADJUST NUT		*		2
22	40006207	FRONT SPRING		*		1
23	40006208	SPRING SHAFT A		*		2
24	40049426	SPRING C		*		2
25	40006212	ADJUST SCREW		*		2
26	SM8040612TP	SCREW M4 L=6		*		2
27	SV4030601SR	SCREW M3 L=6		*		2
28	40088315	THRUST COLLAR		*		2
29	SL4040681SC	COMBINATION SCREW M4X8		*		5
30	40087167	UNDER COVER		*		1
31	40087157	HINGE SCREW		*		2
32	SL4041681SC	SCREW M4 L=16		*		1
33	M8002430000	STOPPER		*		1
34	KX000000210	SADDLE TYPE TIE MOUNT		*		1
35	SM4051001SC	SCREW M5 L=10		*		1
36	KX000000230	RELEASIBLE CABLE TIE		*		1
37	40088035	POWER SUPPLY PLATE ASSY CE	FOR 1-PHASE 220~240V CE PFL	*		1
38	40089563	POWER SUPPLY PLATE ASSY LA	FOR 1-PHASE 100~120V PFL JA_LA	*		1
39	40088316	RUBBER CUSHION		*		2
40	40087139	FLT-T PCB ASSY	FOR 3-PHASE 200~240V PFL, 3-PHASE 200~240V PFL JA, 1-PHASE 100~120V PFL JA_LA	*		1
41	SL4041081SC	SCREW M4 L=10		*		2
42	CM300100402	VOLTAGE DANGER LABEL(SMALL)	FOR 3-PHASE 200~240V PFL, 3-PHASE 200~240V PFL JA, 1-PHASE 100~120V PFL JA_LA	*		1
43	KX000000280	BEAD BAND		*		2
44	CM600100101	WEEE MARK LABEL S	FOR 1-PHASE 220~240V CE PFL	*		1

SC-922 (DIRECT MOTOR IS USED.)



SC-922 (DIRECT MOTOR IS USED.)

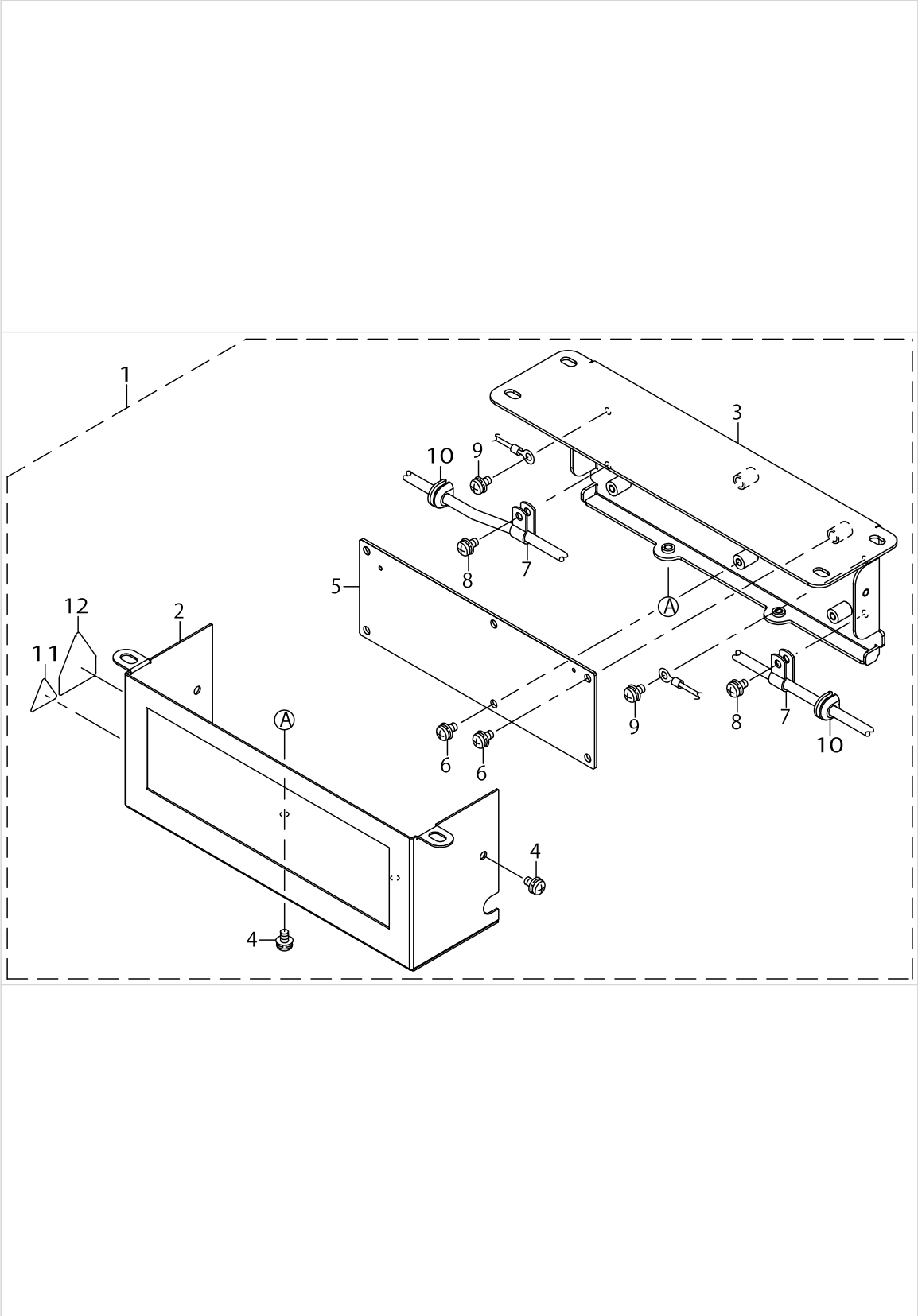
No.	Parts No.	Parts name	Remarks	Level	Cons	Qty
45	CM300100302	VOLTAGE DANGER LABEL(SMALL)	FOR 1-PHASE 220~240V CE PFL	*		1
46	CM300400602	VOLTAGE CAUTION LABEL L=25		*		1
47	CM300100003	VOLTAGE WARNING LABEL(25)	FOR 1-PHASE 220~240V PFL	*		1
48	SL4031081SC	SCREW M3 L=10		*		2
49	SL4040881SC	SCREW M4 L=8		*		3
50	SL4030881SC	SCREW M3 L=8		*		1
51	40087168	HOUSING PLATE A	FOR 1-PHASE 220~240V PFL, 3-PHASE 200~240V PFL, 3-PHASE 200~240V PFL JA	*		1
52	SL4041491SC	SCREW 4 L=14		*		3
53	SL4030881SC	SCREW M3 L=8	FOR 1-PHASE 220~240V PFL	*		1
54	40087166	FRAME B	FOR 1-PHASE 220~240V CE PFL, 3-PHASE 200~240V PFL, 3-PHASE 200~240V PFL JA, 1-PHASE 100~120V PFL JA_LA	*		1
55	40087165	FRAME A	FOR 1-PHASE 220~240V PFL	*		1
56	SL4041081SC	SCREW M4 L=10		*		10
57	40162977	FLT-CE PCB ASSY	FOR 1-PHASE 220~240V CE PFL	*		1
58	40162974	CTL_PCB_ASSY_CE	FOR 1-PHASE 220~240V CE PFL	*		1
59	40102979	AC POWER SUPPLY CORD F	FOR 3-PHASE 200~240V PFL JA			1
60	KF000000030	SLO-BLO FUSE				1
61	40117054	EC DECLARATION (BOX)	FOR 1-PHASE 220~240V CE PFL			1
62	CM600100201	WEEE INFORMATION SHEET	FOR 1-PHASE 220~240V CE PFL			1
63	40102693	AC POWER SUPPLY CORD C	FOR 1-PHASE 220~240V PFL			1
64	40074444	CONTROL BOX BRACKET				3
65	40084716	RUBBER MOUNTING				3
66	WP0621036SP	WASHER				3
67	40088314	CONNECING ROD ASSY				1
68	M6102461DAA	AC INPUT CABLE ASM.(CE)	FOR 1-PHASE 220~240V CE PFL			1
69	KF000000080	SLO-BLO FUSE				1
70	M4401471AA0	BOX ACCESSORIE PART A ASM.				1
71	MAO11532000	CORD STAPLE		*		5
72	MTSHJ100003	BOLT		*		3
73	NM6080002SC	NUT M8		*		3
74	WP0851846SC	WASHER 8.5X22.0X1.8		*		3
75	WS0820002KR	SPRING WASHER M8		*		3
76	SK3512001SE	WOOD SCREW D=5.1 L=20		*		2



M51N

No.	Parts No.	Parts name	Remarks	Level	Cons	Qty
1	40102020	M51N MOTOR UNIT B	EXCEPT CE			1
2	40102021	M51N MOTOR UNIT C	FOR CE			1
3	40018509	M50 MOTOR BELT COVER ASSY				1
4	40018574	SCREW		*		2
5	40018514	PULLEY COVER A		*		1
6	40018568	SUPPORTING ROD		*		1
7	40018569	WASHER		*		1
8	40018570	SCREW		*		1
9	40018571	DROPPING PLATE		*		1
10	40018572	DROPPING PAD		*		1
11	40018573	SCREW		*		1
12	40018578	KEY				1
13	40018567	PULLEY COVER B				1
14	40018575	SCREW				2
15	40018576	NUT				2
16	40018580	NUT				1
17	40018579	WASHER				1
18	40018582	MOUNTING BOLT ASM.				1
19	CM600100101	WEEE MARK LABEL S	FOR CE			1
20	CM600100201	WEEE INFORMATION SHEET	FOR CE			1

REACTOR BOX 1P (FOR CE)



REACTOR BOX 1P (FOR CE)

No.	Parts No.	Parts name	Remarks	Level	Cons	Qty
1	40161412	REACTOR_BOX_ASSY_1P				1
2	40161413	REACTOR_BOX_COVER_A_ASSY		*		1
3	40161414	REACTOR BOX BASE		*		1
4	SL4040881SC	SCREW M4 L=8		*		4
5	40161421	REACTOR PCB ASSY 1P		*		1
6	SL4040881SC	SCREW M4 L=8		*		6
7	HX00150000B	CABLE CLAMP		*		2
8	SL4040881SC	SCREW M4 L=8		*		2
9	SL4040881SC	SCREW M4 L=8		*		2
10	M1013110000	CORD BUSH A		*		2
11	CM300100003	VOLTAGE WARNING LABEL (25)		*		1
12	CM300400602	VOLTAGE CAUTION LABEL L=25		*		1

HOW TO MAKE USE OF THIS PARTS LIST

1.As to "#01" and "#02" refer to the "Note" given at the bottom of the respective pages.

2.Codes on the "Qty" column

- Each numeral indicates the number of parts required.
- "0.1" and "2.5" indicate the length (in meters) of the respective parts.

3.Parentheses mean that the corresponding part is a subpart that constructs an assembly part.

4.Dotted lines on the Figures indicate assembly parts.

1. リストページの# 0 1、# 0 2の印は、ページ下の"注記"の説明を参照下さい。
2. 数量欄の数字は、個数を表し、0. 1、2. 5等の数値は、長さ（単位メートル）を表します。
3. 数量欄の（ ）は、組部品を構成している子部品であることを意味します。
4. イラストページの-----枠は、組構成であることを意味します。

NUMERICAL INDEX OF PARTS

PART NO	PAGE	REF NO.	PART NO	PAGE	REF NO.	PART NO	PAGE	REF NO.
40006202	2	21	40087159	6	17	40126248	6	1~5
40006202	6	21	40087165	4	54·55	40126249	6	1~5
40006207	2	22	40087165	8	54·55	40161412	12	1
40006207	6	22	40087166	4	54·55	40161413	12	2
40006208	2	23	40087166	8	54·55	40161414	12	3
40006208	6	23	40087167	2	30	40161421	12	5
40006212	2	25	40087167	6	30	40162974	4	6·58
40006212	6	25	40087168	4	51	40162974	8	6·58
40018509	10	3	40087168	8	51	40162977	4	40·57
40018514	10	5	40088035	2	37	40162977	8	40·57
40018567	10	13	40088035	6	37	CM300100003	4	47
40018568	10	6	40088311	2	11	CM300100003	8	47
40018569	10	7	40088311	6	11	CM300100003	12	11
40018570	10	8	40088314	8	67	CM300100302	4	45
40018571	10	9	40088315	2	28	CM300100302	8	45
40018572	10	10	40088315	6	28	CM300100402	2	42
40018573	10	11	40088316	2	39	CM300100402	6	42
40018574	10	4	40088316	6	39	CM300400602	4	46
40018575	10	14	40089414	4	59·63	CM300400602	8	46
40018576	10	15	40089563	2	38	CM300400602	12	12
40018578	10	12	40089563	6	38	CM600100101	2	44
40018579	10	17	40091952	4	60·61	CM600100101	6	44
40018580	10	16	40099916	4	68	CM600100101	10	19
40018582	10	18	40101476	2	6·58	CM600100201	4	60·61
40042130	2	18	40101476	6	6·58	CM600100201	8	61·62
40042130	6	18	40101479	2	8~10	CM600100201	10	20
40042133	2	20	40101479	6	8~10	HX00150000B	12	7
40042133	6	20	40101482	2	8~10	KF000000030	4	66·67
40049426	2	24	40101482	6	8~10	KF000000030	8	60·69
40049426	6	24	40101485	2	8~10	KF000000080	4	66·67
40074444	8	64	40101485	6	8~10	KF000000080	8	60·69
40084716	8	65	40101488	2	1~5	KX000000210	2	34
40087139	2	40·57	40101489	2	1~5	KX000000210	6	34
40087139	6	40·57	40101490	2	1~5	KX000000230	2	36
40087153	2	13	40101491	2	1~5	KX000000230	6	36
40087153	6	13	40101492	2	1~5	KX000000280	2	43
40087154	2	14	40102020	10	1	KX000000280	6	43
40087154	6	14	40102021	10	2	M1013110000	12	10
40087155	2	16	40102693	4	59·63	M4401471AA0	8	70
40087155	6	16	40102693	8	59·63	M4501471AA0	4	64
40087156	2	19	40102979	8	59·63	M6102461DAA	4	65
40087156	6	19	40117054	8	61·62	M6102461DAA	8	68
40087157	2	31	40126245	6	1~5	M8002430000	2	33
40087157	6	31	40126246	6	1~5	M8002430000	6	33
40087159	2	17	40126247	6	1~5	MAO11532000	8	71

NUMERICAL INDEX OF PARTS

PART NO	PAGE	REF NO.
MTSHJ100003	8	72
NM6080002SC	8	73
SK3512001SE	8	76
SL4030881SC	4	53
SL4030881SC	8	53
SL4031081SC	4	48
SL4031081SC	8	48
SL4040681SC	2	29
SL4040681SC	6	29
SL4040881SC	4	49
SL4040881SC	8	49
SL4040881SC	12	9
SL4041081SC	2	56
SL4041081SC	4	56
SL4041081SC	6	56
SL4041081SC	8	56
SL4041091SC	2	15
SL4041091SC	6	15
SL4041491SC	4	52
SL4041491SC	8	52
SL4041681SC	2	32
SL4041681SC	6	32
SL4051091SC	4	62
SM4051001SC	2	35
SM4051001SC	6	35
SM8040612TP	2	26
SM8040612TP	6	26
SV4030601SR	2	27
SV4030601SR	6	27
WP0621036SP	8	66
WP0851846SC	8	74
WS0820002KR	8	75