

MODEL : SC-920 (For China)

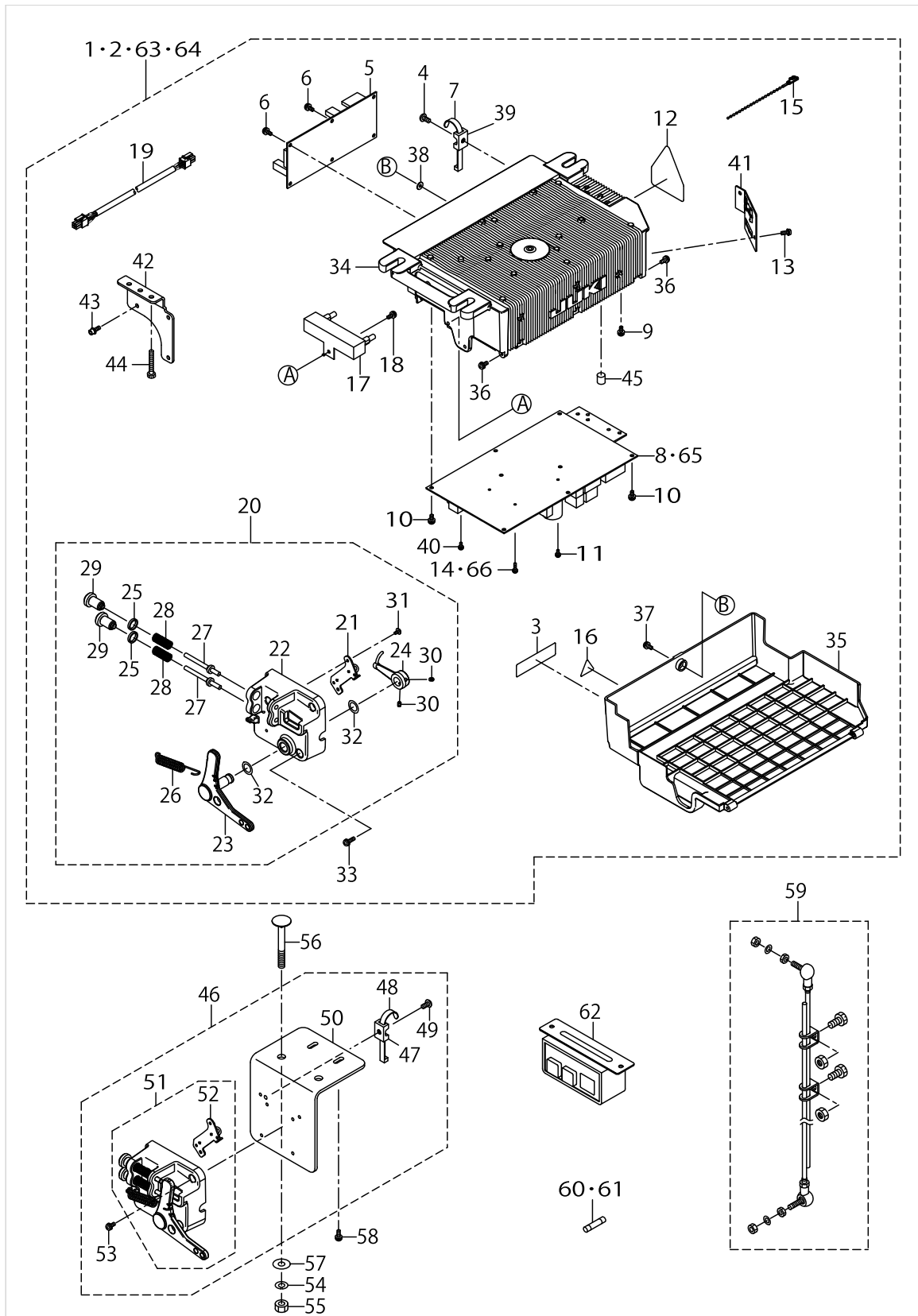
List No : 1531-04

PARTS LIST

Published:11/30/2017

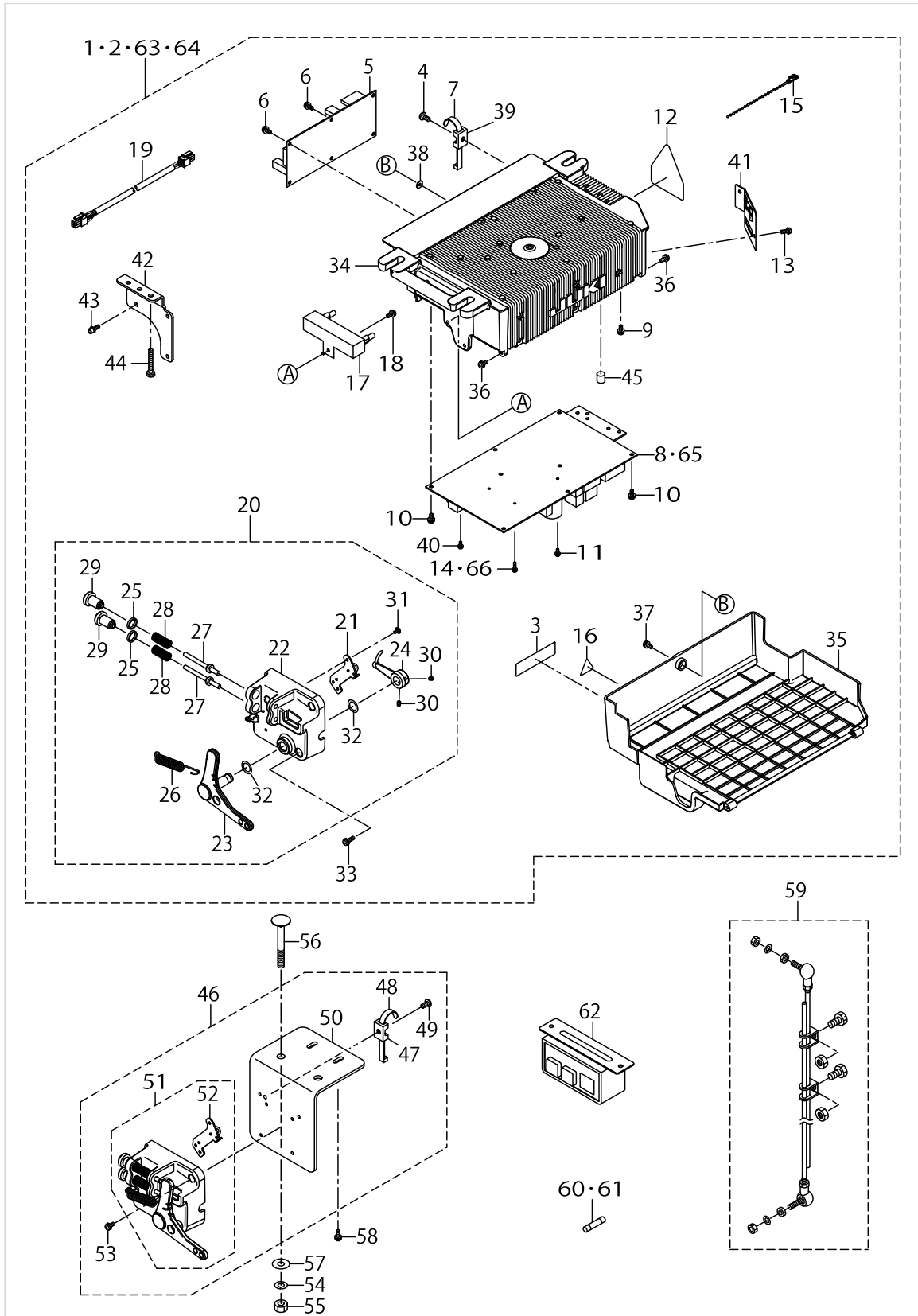
CONTENTS

SC-920.....	1
CP-18 TYPE A.....	5
HOW TO MAKE USE OF THIS PARTS LIST	7



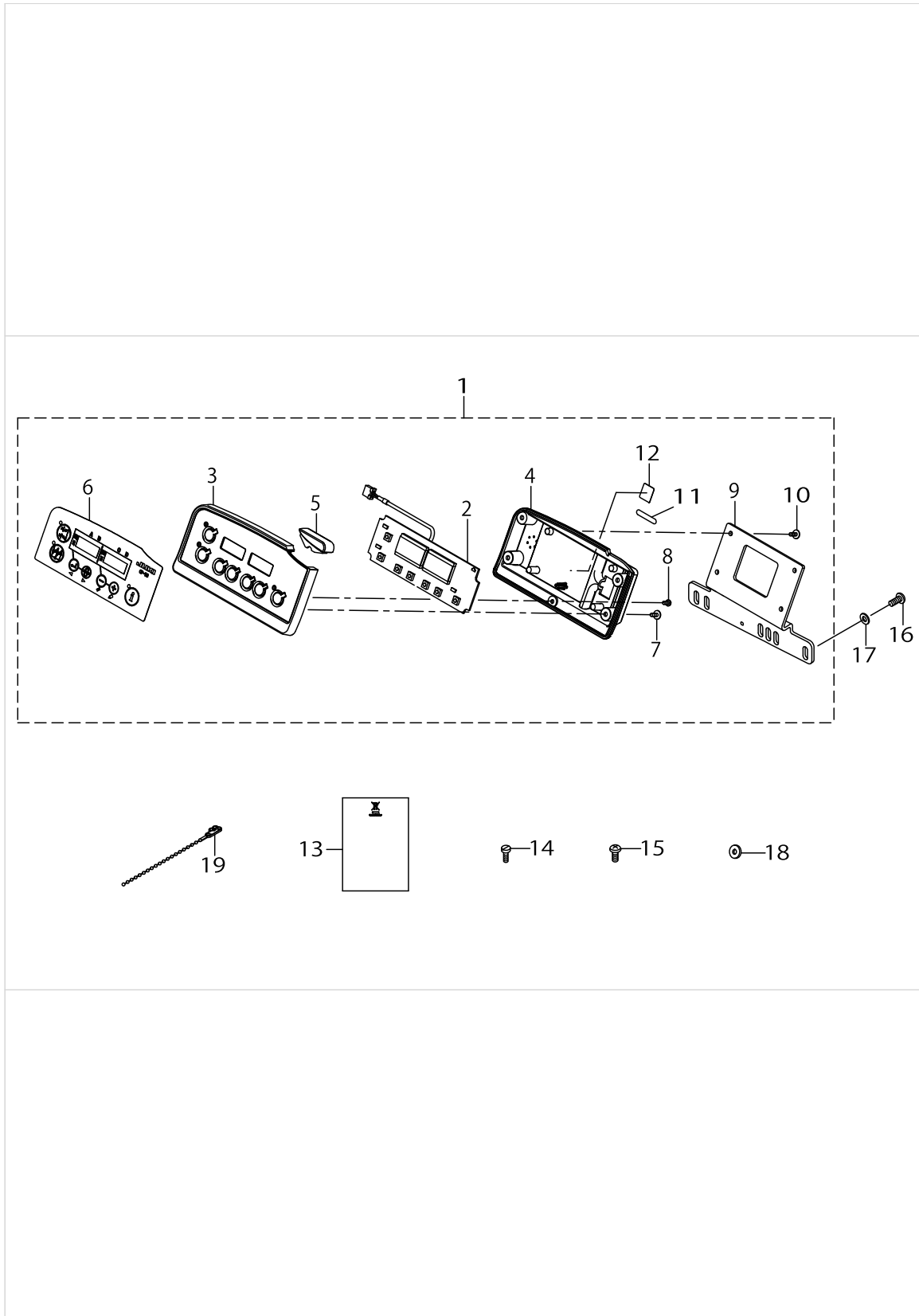
SC-920

No.	Parts No.	Parts name	Remarks	Level	Cons	Qty
1	40087114	PSC UNIT 1PHASE 220-240V PFL	SPECIFICATIONS WITH PEDAL			1
2	40094308	PSC UNIT 1PHASE 220-240V PFL SDL-SP	SEPARATION SPECIFICATIONS PEDAL			1
3	40088055	RATING LABEL A DRAWING		*		1
4	SM4051001SC	SCREW M5 L=10		*		1
5	40087119	CTL_PCB_ASSY		*		1
6	SL4041081SC	SCREW M4 L=10		*		6
7	KX000000230	RELEASIBLE CABLE TIE		*		1
8	40087129	PWR-S PCB ASSY	SPECIFICATIONS WITH PEDAL, SEPARATION SPECIFICATIONS PEDAL	*		1
9	SL4040881SC	SCREW M4 L=8		*		3
10	SL4041081SC	SCREW M4 L=10		*		10
11	SL4030881SC	SCREW M3 L=8		*		1
12	CM300400602	VOLTAGE CAUTION LABEL L=25		*		1
13	SL4041081SC	SCREW M4 L=10		*		2
14	SL4031081SC	SCREW M3 L=10	SPECIFICATIONS WITH PEDAL, SEPARATION SPECIFICATIONS PEDAL	*		2
15	KX000000280	BEAD BAND		*		2
16	CM300100003	VOLTAGE WARNING LABEL(25)		*		1
17	40087154	RESISTANCE_A_ASSY		*		1
18	SL4041091SC	SCREW M4 L=10		*		1
19	40087153	DC POWER SUPPLY CORD ASSY		*		1
20	40087155	PEDAL_SENSOR_A_ASSY	SPECIFICATIONS WITH PEDAL, SC-920(-F) SPECIFICATIONS WITH PEDAL	*		1
21	40087159	SENSOR COIL HOLD A ASSY	SPECIFICATIONS WITH PEDAL, SC-920(-F) SPECIFICATIONS WITH PEDAL	*		1
22	40042130	PEDAL_SENSOR_BASE		*		1
23	40087156	PEDAL_LEVER_A		*		1
24	40042133	PEDAL_LEVER_B		*		1
25	40006202	ADJUST_NUT		*		2
26	40006207	FRONT_SPRING		*		1
27	40006208	SPRING_SHAFT_A		*		2
28	40049426	SPRING_C		*		2
29	40006212	ADJUST_SCREW		*		2
30	SM8040612TP	SCREW M4 L=6		*		2
31	SV4030601SR	SCREW M3 L=6		*		2
32	40088315	THRUST COLLAR		*		2
33	SL4041491SC	SCREW M4 L=14	SPECIFICATIONS WITH PEDAL, SC-920(-F) SPECIFICATIONS WITH PEDAL	*		3
34	40087165	FRAME_A		*		1
35	40087167	UNDER_COVER		*		1
36	40087157	HING SCREW		*		2
37	SL4041681SC	SCREW M4 L=16		*		1
38	M8002430000	STOPPER		*		1
39	KX000000210	SADDLE TYPE TIE MOUNT		*		1
40	SL4030881SC	SCREW M3 L=8		*		1
41	40087168	HOUSING_PLATE_A		*		1
42	40093424	BOX BRACKET	SEPARATION SPECIFICATIONS PEDAL , - SC-920(F) SEPARATION SPECIFICATIONS PEDAL	*		1
43	SL6041292TN	SCREW	SEPARATION SPECIFICATIONS PEDAL , - SC-920(F) SEPARATION SPECIFICATIONS PEDAL	*		3
44	ST9053511SR	TAPPING SCREW M5X35	SEPARATION SPECIFICATIONS PEDAL , - SC-920(F) SEPARATION SPECIFICATIONS PEDAL	*		2



SC-920

No.	Parts No.	Parts name	Remarks	Level	Cons	Qty
45	40088316	RUBBER_CUSHION		*		2
46	40094262	PEDAL SENSOR BASE ASSY	SEPARATION SPECIFICATIONS P-EDAL ,SC-920(F) SEPARATION SPECIFICATIONS PEDAL			1
47	KX000000210	SADDLE TYPE TIE MOUNT	SEPARATION SPECIFICATIONS P-EDAL ,SC-920(F) SEPARATION SPECIFICATIONS PEDAL	*		1
48	KX000000230	RELEASIBLE CABLE TIE	SEPARATION SPECIFICATIONS P-EDAL ,SC-920(F) SEPARATION SPECIFICATIONS PEDAL	*		1
49	SM4051001SC	SCREW M5 L=10	SEPARATION SPECIFICATIONS P-EDAL ,SC-920(F) SEPARATION SPECIFICATIONS PEDAL	*		1
50	40093423	SENSOR BRACKET		*		1
51	40094259	PEDAL SENSOR ASM.		*		1
52	40094260	SENSOR COIL HOLD ASSY		*		1
53	SL4041091SC	SCREW M4 L=10		*		3
54	WS0820002KR	SPRING WASHER, M8	SEPARATION SPECIFICATIONS P-EDAL ,SC-920(F) SEPARATION SPECIFICATIONS PEDAL			1
55	NM6080002SC	NUT M8	SEPARATION SPECIFICATIONS P-EDAL ,SC-920(F) SEPARATION SPECIFICATIONS PEDAL			1
56	MTSHJ100003	BOLT	SEPARATION SPECIFICATIONS P-EDAL ,SC-920(F) SEPARATION SPECIFICATIONS PEDAL			1
57	WP0851846SC	WASHER 8.5X22.0X1.8	SEPARATION SPECIFICATIONS P-EDAL ,SC-920(F) SEPARATION SPECIFICATIONS PEDAL			1
58	SL4051291SC	SCREW M5X0.8 L=12	SEPARATION SPECIFICATIONS P-EDAL ,SC-920(F) SEPARATION SPECIFICATIONS PEDAL			2
59	40088314	CONNECING_ROD_ASSY				1
60	KF000000030	SLO-BLO FUSE				1
61	KF000000080	SLO-BLO FUSE				1
62	M6101471CA0	POWER SWITCH C ASM.				1
63	40099980	PSC UNIT(F) 1PHASE 220-240V PFL	SC-920(F) SPECIFICATIONS WITH PEDAL			1
64	40100394	PSC UNIT(F) 1PHASE 220-240V PFL PDL-SP	SC-920(F) SEPARATION SPECIFICATIONS PEDAL			1
65	40099351	PWR-S(F) PCB ASSY	SC-920(F) SPECIFICATIONS WITH PEDAL ,SC-920(F) SEPARATION SPECIFICATIONS PEDAL	*		1
66	SL4031291SC	SCREW M3X12	SC-920(F) SPECIFICATIONS WITH PEDAL ,SC-920(F) SEPARATION SPECIFICATIONS PEDAL	*		2



CP-18 TYPE A

No.	Parts No.	Parts name	Remarks	Level	Cons	Qty
1	40088334	CP-18 TYPE A				1
2	40088126	CP PCB ASSY		*		1
3	40088347	FRONT_CASE		*		1
4	40088348	REAR_CASE		*		1
5	40088349	INDICATOR		*		1
6	40088351	PANEL SHEET		*		1
7	SV4030802SN	TAPPING SCREW WITH FLANGE M3X8		*		4
8	ST4030651SN	SCREW M3 X 6		*		1
9	40088350	PANEL BRACKET_A		*		1
10	SV4030802SN	TAPPING SCREW WITH FLANGE M3X8		*		4
11	40044616	TYPE LABEL A		*		1
12	CM600100101	WEEE MARK LABEL S	TYPE CE	*		1
13	CM600100201	WEEE INFORMATION SHEET				1
14	SS6111210SP	SCREW 11/64-40 L=12				2
15	SS4121215SP	SCREW 3/16-28 L=12				2
16	SM4051255SP	SCREW.,M5 L=12.				2
17	WP0501016SD	WASHER 5X10.5X1				4
18	B1144771000	FRAME SIDE COVER GASKET (C)				4
19	KX000000280	BEAD BAND				1

HOW TO MAKE USE OF THIS PARTS LIST

1.As to "#01" and "#02" refer to the "Note" given at the bottom of the respective pages.

2.Codes on the "Qty" column

- Each numeral indicates the number of parts required.
- "0.1" and "2.5" indicate the length (in meters) of the respective parts.

3.Parentheses mean that the corresponding part is a subpart that constructs an assembly part.

4.Dotted lines on the Figures indicate assembly parts.

1. リストページの# 0 1、# 0 2の印は、ページ下の"注記"の説明を参照下さい。
2. 数量欄の数字は、個数を表し、0. 1、2. 5等の数値は、長さ（単位メートル）を表します。
3. 数量欄の（ ）は、組部品を構成している子部品であることを意味します。
4. イラストページの-----枠は、組構成であることを意味します。

NUMERICAL INDEX OF PARTS

PART NO	PAGE	REF NO.	PART NO	PAGE	REF NO.
40006202	2	25	KF000000030	4	60·61
40006207	2	26	KF000000080	4	60·61
40006208	2	27	KX000000210	2	47
40006212	2	29	KX000000210	4	47
40042130	2	22	KX000000230	2	48
40042133	2	24	KX000000230	4	48
40044616	6	11	KX000000280	2	15
40049426	2	28	KX000000280	6	19
40087114	2	1·2·63·64	M6101471CA0	4	62
40087119	2	5	M8002430000	2	38
40087129	2	8·65	MTSHJ100003	4	56
40087153	2	19	NM6080002SC	4	55
40087154	2	17	SL4030881SC	2	40
40087155	2	20	SL4031081SC	2	14·66
40087156	2	23	SL4031291SC	4	14·66
40087157	2	36	SL4040881SC	2	9
40087159	2	21	SL4041081SC	2	13
40087165	2	34	SL4041091SC	2	53
40087167	2	35	SL4041091SC	4	53
40087168	2	41	SL4041491SC	2	33
40088055	2	3	SL4041681SC	2	37
40088126	6	2	SL4051291SC	4	58
40088314	4	59	SL6041292TN	2	43
40088315	2	32	SM4051001SC	2	49
40088316	4	45	SM4051001SC	4	49
40088334	6	1	SM4051255SP	6	16
40088347	6	3	SM8040612TP	2	30
40088348	6	4	SS4121215SP	6	15
40088349	6	5	SS6111210SP	6	14
40088350	6	9	ST4030651SN	6	8
40088351	6	6	ST9053511SR	2	44
40093423	4	50	SV4030601SR	2	31
40093424	2	42	SV4030802SN	6	10
40094259	4	51	WP0501016SD	6	17
40094260	4	52	WP0851846SC	4	57
40094262	4	46	WS0820002KR	4	54
40094308	2	1·2·63·64			
40099351	4	8·65			
40099980	4	1·2·63·64			
40100394	4	1·2·63·64			
B1144771000	6	18			
CM300100003	2	16			
CM300400602	2	12			
CM600100101	6	12			
CM600100201	6	13			