

MODEL : SP-48

List No : 1522-01

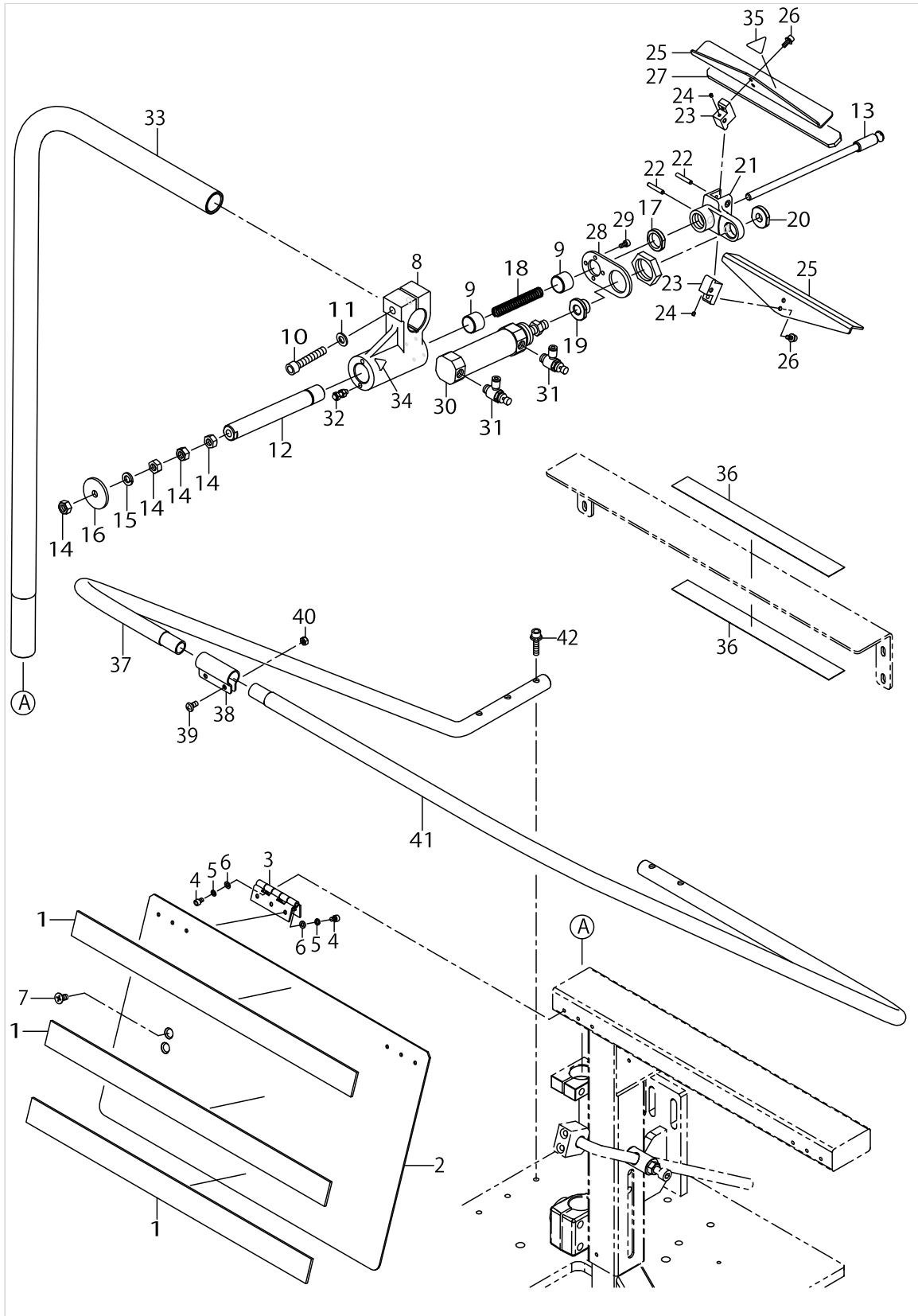
PARTS LIST

Published:09/10/2017

CONTENTS

SP-48:GRASP STACKER DEVICE (1).....	1
SP-48:GRASP STACKER DEVICE (2).....	3
HOW TO MAKE USE OF THIS PARTS LIST	7

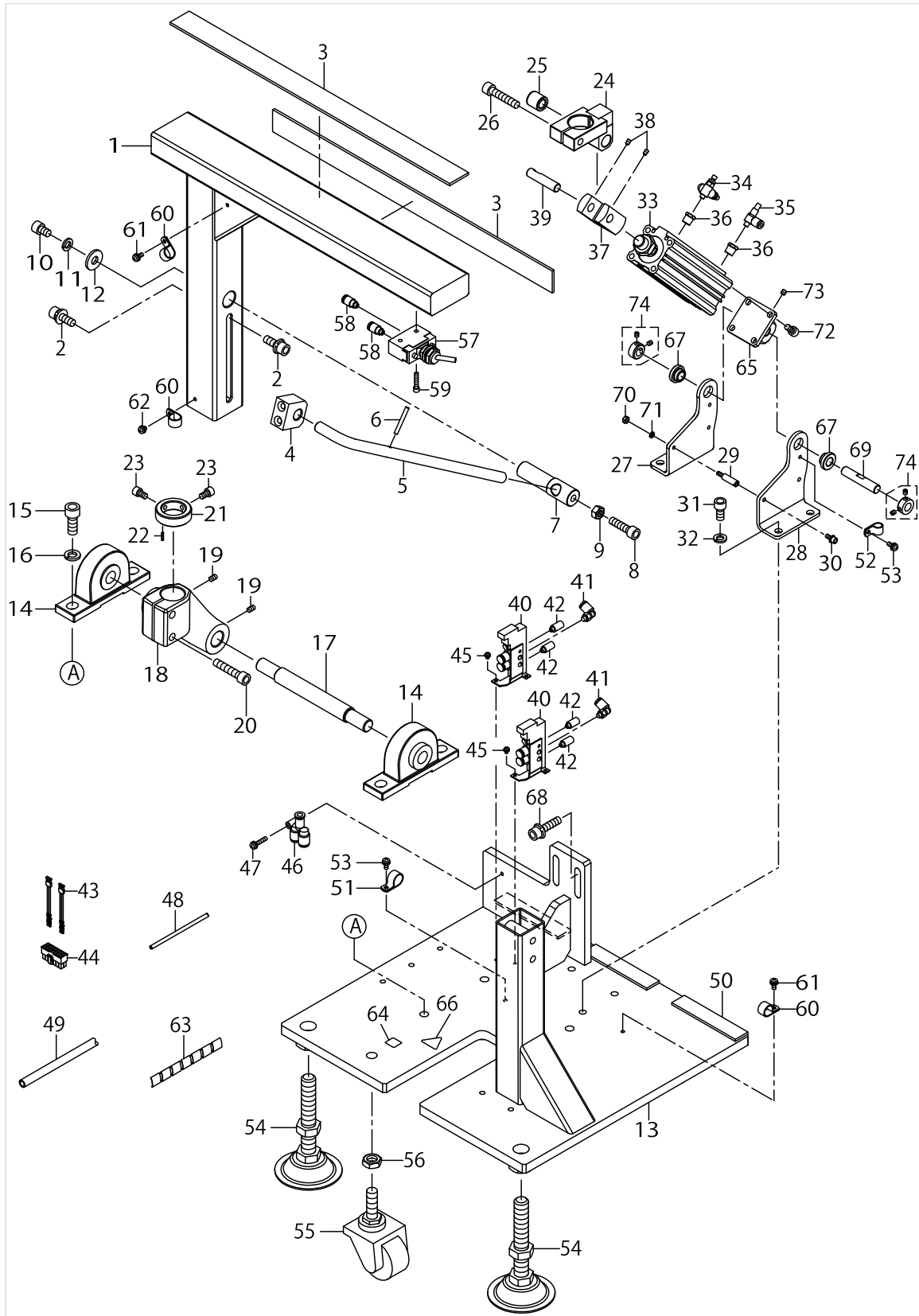
SP-48:GRASP STACKER DEVICE (1)



SP-48:GRASP STACKER DEVICE (1)

No.	Parts No.	Parts name	Remarks	Level	Cons	Qty
1	40074001	CLOTH HOLDER RUBBER				3
2	40074002	CLOTH HOLDER TABLE				1
3	40074003	RISED_HINGE				2
4	SM6040602TP	SCREW M4 L=6				12
5	WS0410002KN	SPRING WASHER				12
6	WP0430800SC	WASHER M4				12
7	SM1061201SN	SCREW M6 L=12				2
8	40074007	CHUCK_STAND				1
9	40074008	METAL				2
10	SM6084502TP	SCREW				1
11	WP0841600SC	WASHER				1
12	40074009	CHUCK_ROD				1
13	40074010	CENTER_SHAFT				1
14	NM6080001SC	NUT M8X1.25				4
15	WS0820002KN	SPRING WASHER M8				1
16	40074011	CHUCK_PLATE				1
17	40074012	CHUCK_ROD_NUT				1
18	40074013	COIL_SPRING				1
19	40074014	CYLINDER_EDGE				1
20	40074015	CYLINDER_EDGE_NUT				1
21	40074016	CHUCK_BOSS				1
22	40074017	CHUCK_BOSS_PIN				2
23	40074018	GRASPING_FULCRUM_BLOCK				2
24	SM8030402TP	SCREW M3X0.5 L=4				2
25	40074019	GRASPING_PLATE				2
26	SL6041092TN	SCREW				4
27	40074020	GRASPING_RUBBER				1
28	40074029	CYLINDER_PLATE				1
29	SM6040802TN	SCREW				4
30	PA2505001A0	AIR CYLINDER				1
31	PC015108000	SPEED CONTROLLER				2
32	40036277	STOPPER_BOLT				2
33	40074030	ROCK_ARM				1
34	CM300200001	ATTENTION SEAL				1
35	CM300200002	CAUTION LABEL(25)				1
36	40074027	TAPE				2
37	40074032	GRASP_STACKER_SAFETY_BAR_A				1
38	22931307	SPOOL REST ROD JOINT				1
39	SM4051001SN	SCREW M5				2
40	NM6050001SE	NUT M5				2
41	40074033	GRASP_STACKER_SAFETY_BAR_B				1
42	SL6062592TN	SCREW				5

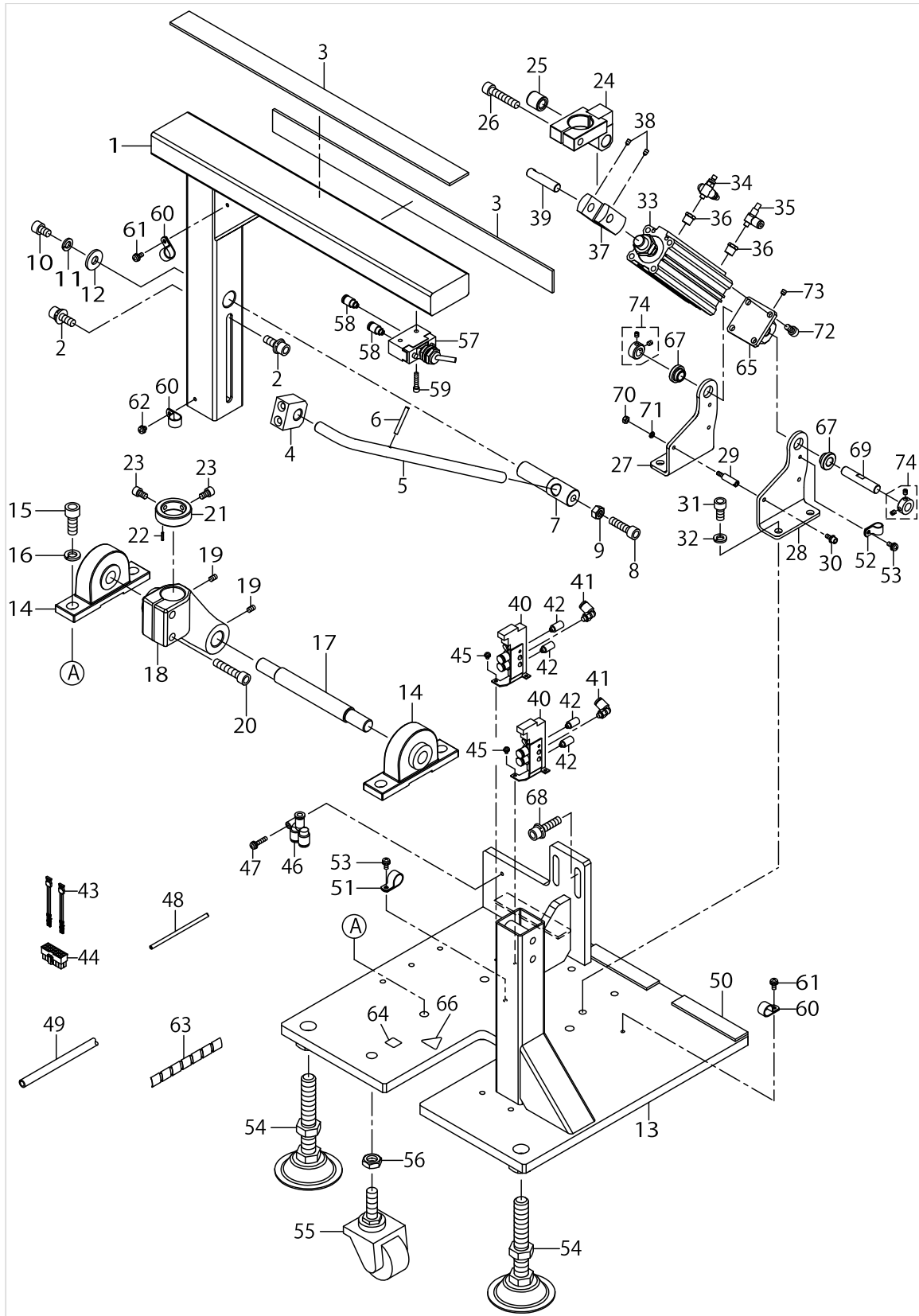
SP-48:GRASP STACKER DEVICE (2)



SP-48:GRASP STACKER DEVICE (2)

No.	Parts No.	Parts name	Remarks	Level	Cons	Qty
1	40074000	CLOTH HOLDER_BASE				1
2	SL6082092TN	BOLT				4
3	40074001	CLOTH HOLDER RUBBER				2
4	40074004	BLOCK_BRACKET				1
5	40074005	TABLE_SUPPORT_BAR				1
6	PS0400322KP	SPRING PIN 4.0X32				1
7	40074006	TABLE_FIXED_PIN				1
8	SM6083002TN	SCREW M8 L=30				1
9	NM6080001SC	NUT M8X1.25				1
10	SM6081202TP	SCREW M8 L=12				1
11	WS0820002KN	SPRING WASHER M8				1
12	WP0982616SP	WASHER 9.8X24.0X2.6				1
13	40074021	MAIN_FRAME				1
14	40074022	PILLOT_UNIT				2
15	SM6102512TP	SCREW M10X1.5 L=25.0				4
16	WS1020002KN	SPRING WASHER M10				4
17	40074023	STACKER_STRUT_PIN				1
18	40074024	ARM_BRACKET				1
19	SM8050812TP	SCREW M5X8				2
20	SM6084002TN	SCREW M8 L=40				2
21	40074034	COLLAR				1
22	PS0200102KH	SPRING PIN 2.0 X 10				1
23	SM6051002TP	SCREW M5X0.8 L=10				2
24	40074026	ROCKING_ARM_BRACKET_ASSY				1
25	40019621	DRIVE_SHAFT_METAL_A				1
26	SM6084002TN	SCREW M8 L=40				1
27	40074047	CYLINDER BASE A				1
28	40074048	CYLINDER BASE B				1
29	40011205	STUD				2
30	SL6041092TN	SCREW				2
31	SM6081602TN	BOLT M8 L=16				4
32	WS0820002KN	SPRING WASHER M8				4
33	PA3210004A0	AIR CYLINDER				1
34	PC010524000	SPEED CONTROLLER				1
35	PC010507000	SPEED CONTROLLER				1
36	PJ015105001	BUSHING				2
37	40074043	KNUCKLE_JOINT				1
38	SM8040602TP	SCREW M4X0.7 L=6				2
39	40033825	HEAD_FIXED_SHAFT				1
40	PV1502060A0	5 PORT MAGNETIC TRANSFER VALVE				2
41	PJ304040505	ELBOW				2
42	PX050501000	SILENCER				4
43	40032964	AIR VALVE CABLE ASM				2
44	HK034610140	HOUSING 14P				1
45	SL4030591SC	SCREW M3X5				4
46	PJ308060003	Y UNION				1
47	SL4042091SC	SCREW M4X0.7 L=20				1

SP-48:GRASP STACKER DEVICE (2)



SP-48:GRASP STACKER DEVICE (2)

No.	Parts No.	Parts name	Remarks	Level	Cons	Qty
48	BT0400251EB	URETHANE HOSE, BLACK				3.6
49	BT0600401EB	TUBE				2.75
50	40074039	RUBBER				3
51	HX00150000F	CABLE CLIP				1
52	HX00150000C	CABLE CLIP				1
53	SL4041091SC	SCREW M4 L=10				2
54	40035074	ADJUST_BOLT				2
55	11152204	CASTER, SMALL				1
56	NM6120003SC	NUT M12				1
57	40032992	MECHANICAL VALVE				1
58	PJ210006100	HALF UNION				2
59	SM6042002TN	BOLT				2
60	HX00150000E	CORD PRESSER 3-POLE (220/240V)				3
61	SL4041091SC	SCREW M4 L=10				2
62	SL4040691SC	SCREW M4 L=6				1
63	HX00314000A	SPIRAL TUBE				0.5
64	CM600100101	WEEE MARK LABEL S				1
65	40074044	CYLINDER_JOINT				1
66	CM300200002	CAUTION LABEL(25)				1
67	40074045	METAL				2
68	SL6083092TN	SCREW				1
69	40074046	CYLINDER_PIN				1
70	NM6040001SC	NUT M4				2
71	WS0410002KN	SPRING WASHER				2
72	SM6061202TP	SCREW M6 L=12				4
73	SM8050512TP	SCREW				1
74	CS100081CSP	THRUST COLLAR ASM.				2

HOW TO MAKE USE OF THIS PARTS LIST

1.As to "#01" and "#02" refer to the "Note" given at the bottom of the respective pages.

2.Codes on the "Qty" column

- Each numeral indicates the number of parts required.
- "0.1" and "2.5" indicate the length (in meters) of the respective parts.

3.Parentheses mean that the corresponding part is a subpart that constructs an assembly part.

4.Dotted lines on the Figures indicate assembly parts.

1. リストページの# 0 1、# 0 2の印は、ページ下の"注記"の説明を参照下さい。
2. 数量欄の数字は、個数を表し、0. 1、2. 5等の数値は、長さ（単位メートル）を表します。
3. 数量欄の（ ）は、組部品を構成している子部品であることを意味します。
4. イラストページの-----枠は、組構成であることを意味します。

NUMERICAL INDEX OF PARTS

PART NO	PAGE	REF NO.	PART NO	PAGE	REF NO.	PART NO	PAGE	REF NO.
11152204	6	55	40074045	6	67	SM6040602TP	2	4
22931307	2	38	40074046	6	69	SM6040802TN	2	29
40011205	4	29	40074047	4	27	SM6042002TN	6	59
40019621	4	25	40074048	4	28	SM6051002TP	4	23
40032964	4	43	BT0400251EB	6	48	SM6061202TP	6	72
40032992	6	57	BT0600401EB	6	49	SM6081202TP	4	10
40033825	4	39	CM300200001	2	34	SM6081602TN	4	31
40035074	6	54	CM300200002	2	35	SM6083002TN	4	8
40036277	2	32	CM300200002	6	66	SM6084002TN	4	26
40074000	4	1	CM600100101	6	64	SM6084502TP	2	10
40074001	2	1	CS100081CSP	6	74	SM6102512TP	4	15
40074001	4	3	HK034610140	4	44	SM8030402TP	2	24
40074002	2	2	HX00150000C	6	52	SM8040602TP	4	38
40074003	2	3	HX00150000E	6	60	SM8050512TP	6	73
40074004	4	4	HX00150000F	6	51	SM8050812TP	4	19
40074005	4	5	HX00314000A	6	63	WP0430800SC	2	6
40074006	4	7	NM6040001SC	6	70	WP0841600SC	2	11
40074007	2	8	NM6050001SE	2	40	WP0982616SP	4	12
40074008	2	9	NM6080001SC	2	14	WS0410002KN	2	5
40074009	2	12	NM6080001SC	4	9	WS0410002KN	6	71
40074010	2	13	NM6120003SC	6	56	WS0820002KN	2	15
40074011	2	16	PA2505001A0	2	30	WS0820002KN	4	32
40074012	2	17	PA3210004A0	4	33	WS1020002KN	4	16
40074013	2	18	PC010507000	4	35			
40074014	2	19	PC010524000	4	34			
40074015	2	20	PC015108000	2	31			
40074016	2	21	PJ015105001	4	36			
40074017	2	22	PJ210006100	6	58			
40074018	2	23	PJ304040505	4	41			
40074019	2	25	PJ308060003	4	46			
40074020	2	27	PS0200102KH	4	22			
40074021	4	13	PS0400322KP	4	6			
40074022	4	14	PV1502060A0	4	40			
40074023	4	17	PX050501000	4	42			
40074024	4	18	SL4030591SC	4	45			
40074026	4	24	SL4040691SC	6	62			
40074027	2	36	SL4041091SC	6	61			
40074029	2	28	SL4042091SC	4	47			
40074030	2	33	SL6041092TN	2	26			
40074032	2	37	SL6041092TN	4	30			
40074033	2	41	SL6062592TN	2	42			
40074034	4	21	SL6082092TN	4	2			
40074039	6	50	SL6083092TN	6	68			
40074043	4	37	SM1061201SN	2	7			
40074044	6	65	SM4051001SN	2	39			