

MODEL : MU-11/X70358

List No : 1521-00

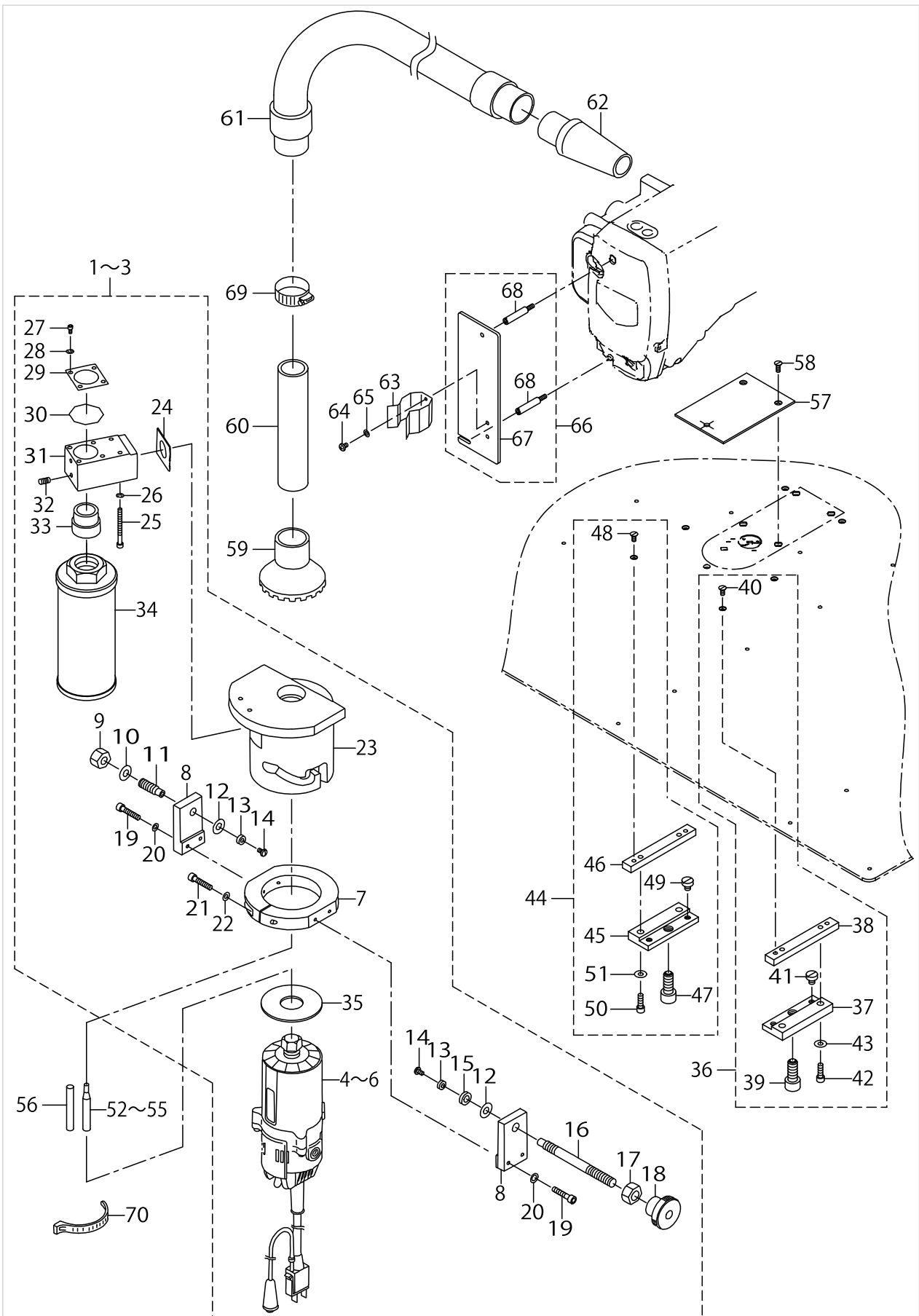
PARTS LIST

Published:09/10/2017

CONTENTS

TRIMMER COMPONENTS	1
ATTACHMENT COMPONENTS.....	5
HOW TO MAKE USE OF THIS PARTS LIST	7

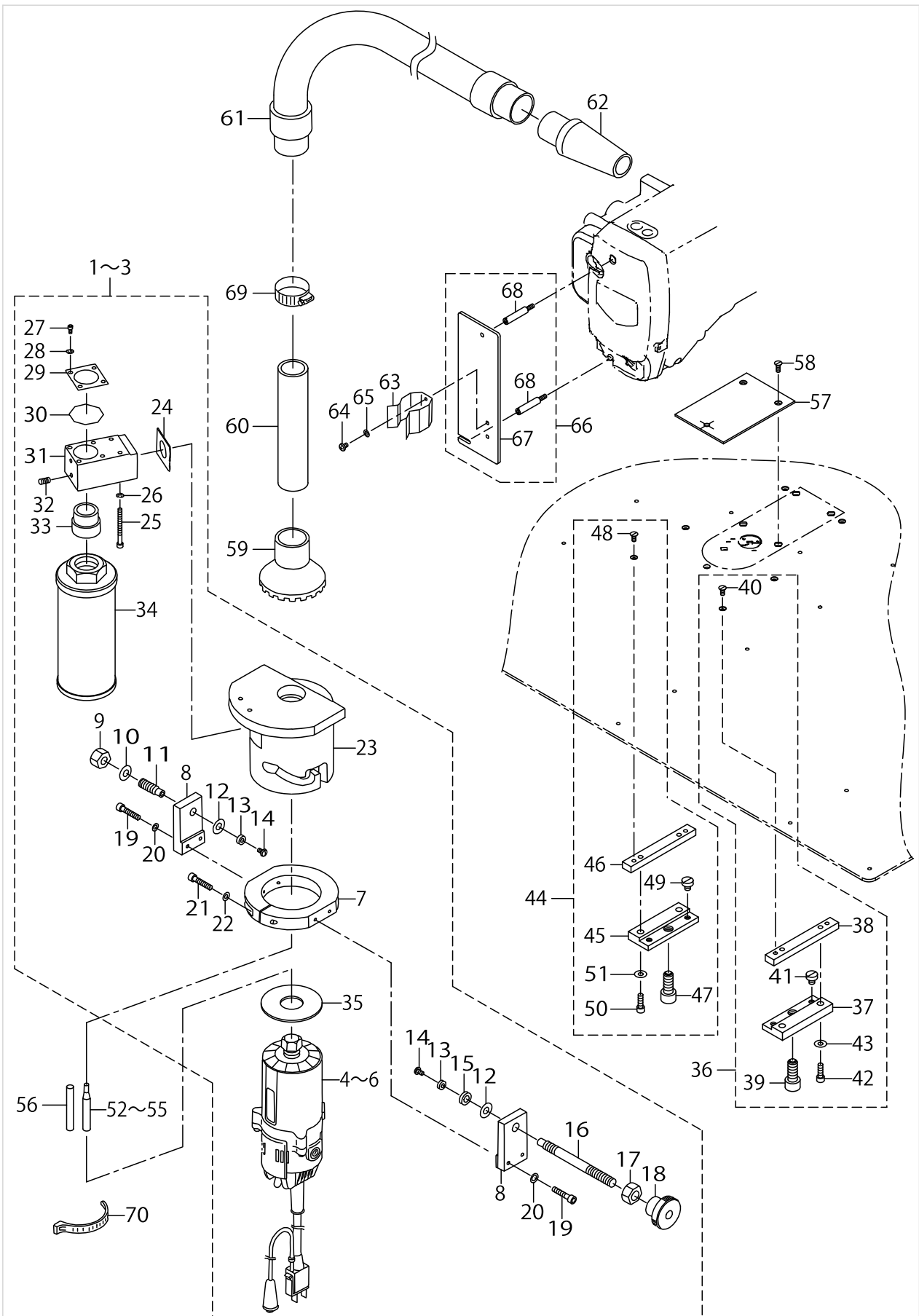
TRIMMER COMPONENTS



TRIMMER COMPONENTS

No.	Parts No.	Parts name	Remarks	Level	Cons	Qty
1	GMU010010A0	TRIMMER ASM.	FOR 100V			1
2	GMU01001AA0	TRIMMER ASM. (115V)	FOR EXPORT(115V)			1
3	GMU01001BA0	TRIMMER ASM. 220V	FOR EXPORT(220V)			1
4	GMU01001000	TRIMMER 100V	FOR 100V	*		1
5	GMU01001A00	TRIMMER 115V	FOR EXPORT(115V)	*		1
6	GMU01001B00	TRIMMER 220V	FOR EXPORT(220V)	*		1
7	GMU01002000	TRIMMER CLAMP		*		1
8	GMU01005000	CLAMP LEVER PLATE		*		2
9	NM6100001SD	NUT M10		*		1
10	WP1052000SD	WASHER M10		*		1
11	GMU01007000	TRIMMER ROLLER SHAFT		*		1
12	WP0751576SD	WASHER 7.5X19X1.5		*		2
13	GMU01006000	TRIMMER ROLLER		*		2
14	SS5090710SP	SCREW 9/64-40 L= 6.5		*		2
15	D8515761C00	STOPPER		*		1
16	GMU01003000	TRIMMER CLAMP LEVER		*		1
17	NM6100001SD	NUT M10		*		1
18	GMU01004000	CLAMP LEVER KNOB		*		1
19	SM6052502TP	SCREW M5X0.8 L=25		*		4
20	WP0520656SA	WASHER 5.2X9.5X0.6		*		4
21	SM6052502TP	SCREW M5X0.8 L=25		*		1
22	WP0520656SA	WASHER 5.2X9.5X0.6		*		1
23	GMU01008000	TRIMMER HOLDER		*		1
24	11043205	SOLENOID RUBBER A		*		1
25	SM6044552TP	BOLT M4X45		*		2
26	WP0430800SD	WASHER M4		*		2
27	SM6030602TP	SCREW M3X0.5 L=6		*		4
28	WP0430800SD	WASHER M4		*		4
29	GMU01012000	FILTER HOLDER		*		1
30	GMU01011000	DUST FILTER		*		1
31	GMU01009000	DUSTBIN BRACKET		*		1
32	SM8040502TP	SCREW M4X0.7 L=5		*		1
33	GMU01010000	DUSTBIN JOINT		*		1
34	GMU01043000	DUSTBIN		*		1
35	GMU01042000	TRIMMER FILTER		*		1
36	GMU010130A0	HOLDER GUIDE ASM., RIGHT				1
37	GMU01013000	HOLDER GUIDE		*		1
38	GMU01015000	HOLDER GUIDE BASE		*		1
39	GMU01036000	HOLDER PLUNGER		*		1
40	SS1110640TP	SCREW 11/64-40 L= 5.5		*		2
41	SS6150710SP	SCREW		*		1
42	SM6051602TP	SCREW M5X0.8 L=16		*		2
43	WP0551016SH	WASHER 5.5X13X1		*		2
44	GMU010140A0	HOLDER GUIDE ASM., LEFT				1
45	GMU01013000	HOLDER GUIDE		*		1
46	GMU01015000	HOLDER GUIDE BASE		*		1
47	GMU01036000	HOLDER PLUNGER		*		1

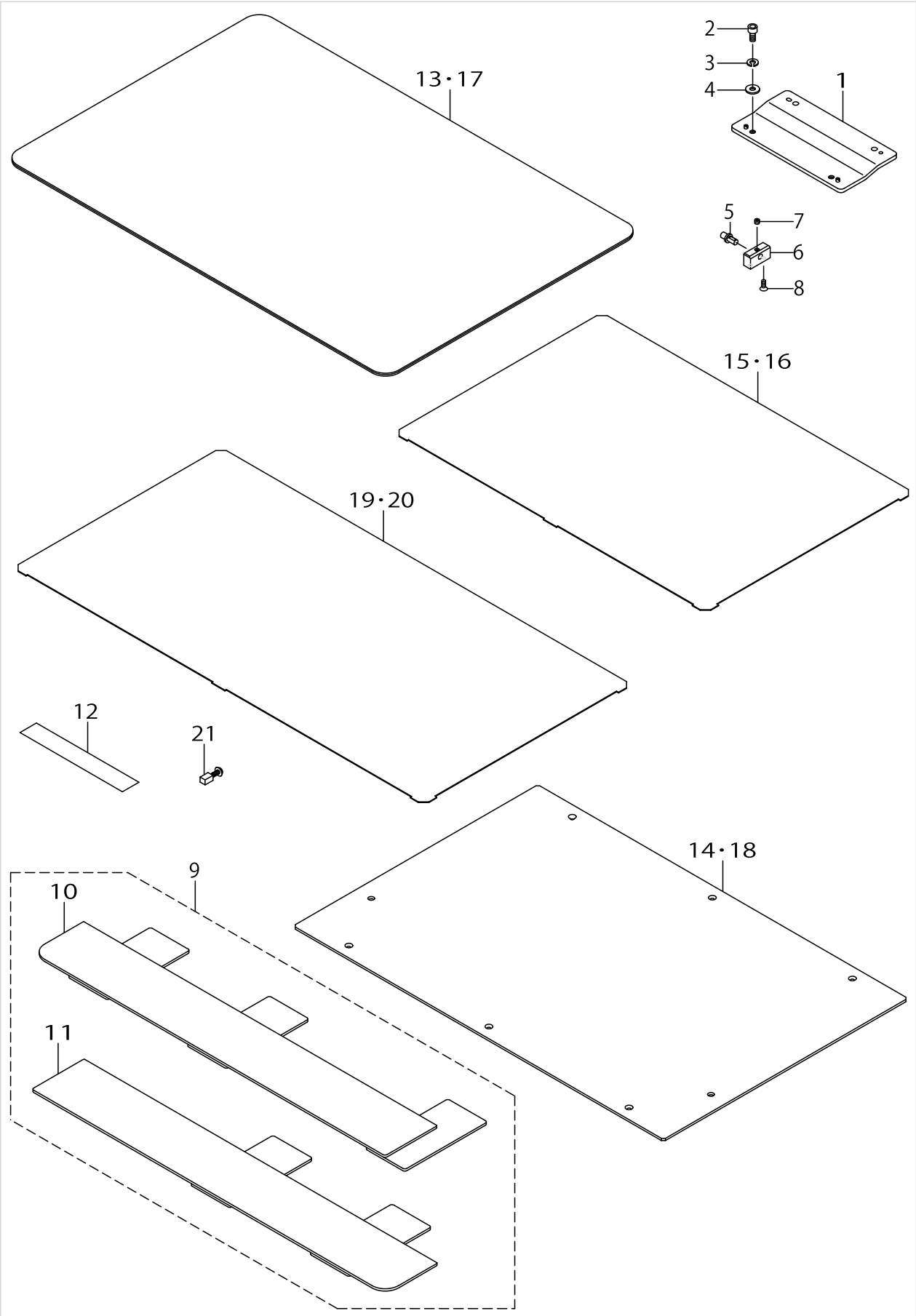
TRIMMER COMPONENTS



TRIMMER COMPONENTS

No.	Parts No.	Parts name	Remarks	Level	Cons	Qty
48	SS1110640TP	SCREW 11/64-40 L= 5.5		*		2
49	SS6150710SP	SCREW		*		1
50	SM6051602TP	SCREW M5X0.8 L=16		*		2
51	WP0551016SH	WASHER 5.5X13X1		*		2
52	GMU01016000	END MILL D=3				1
53	GMU01017000	END MILL D=4				1
54	GMU01018000	END MILL D=5				1
55	GMU01019000	END MILL D=6				1
56	GBR01335000	GAUGE SHAFT				1
57	GMU01020000	GAUGE PLATE				1
58	SM1040870TP	SCREW				2
59	GMU01021000	COLLECTOR HOOD				1
60	GMU01022000	COLLECTOR PIPE				1
61	GMU01023000	COLLECTOR HOSE				1
62	GMU01024000	COLLECTOR HOSE PLUG				1
63	F100200100A	PIPE HOLDER, A				1
64	SM4040655SP	SCREW M4 L=6				2
65	WP0430800SD	WASHER M4				2
66	40036526	HOLDER PLATE ASM.				1
67	40036524	HOLDER PLATE		*		1
68	40036525	PIPE HOLDER STUD		*		2
69	GMU01041000	HOSE BAND				1
70	HX00233000B	CABLE BAND				2

ATTACHMENT COMPONENTS



ATTACHMENT COMPONENTS

No.	Parts No.	Parts name	Remarks	Level	Cons	Qty
1	40072298	LOWER PLATE INSTALLING PLATE A				1
2	SM6061202TP	SCREW M6 L=12				2
3	WS0610002KP	SPRING WASHER				2
4	WP0611626SP	WASHER 15X6X1.6				2
5	B2560220000	SUPPORT PIN				2
6	40051769	FEEDING FRAME SUPPORT BEARING				2
7	SM8050412TP	SCREW M5 L=4				2
8	SM1040870TP	SCREW				4
9	40084412	MILLING SUPPORT PLATE ASM.				1
10	40083099	MILLING_SUPPORT_PLATE_LEFT_ASM.		*		1
11	40084408	MILLING SUPPORT PLATE RIGHT ASM.		*		1
12	B2572229000	FILAMENT TAPE				6
13	40072300	INNER PLATE SHEET 4530	OPTIONAL PARTS (FOR 4530)			1
14	40072301	ALUMINUM BLANK PLATE 4530	OPTIONAL PARTS (FOR 4530)			1
15	40072302	ALUMINUM INNER PLATE 4530	OPTIONAL PARTS (FOR 4530)			1
16	40072303	PLASTIC INNER PLATE 4530	OPTIONAL PARTS (FOR 4530)			1
17	40072304	INNER PLATE SHEET	OPTIONAL PARTS (FOR 6030)			1
18	40072305	ALUMINUM BLANK PLATE	OPTIONAL PARTS (FOR 6030)			1
19	40072306	ALUMINUM INNER PLATE	OPTIONAL PARTS (FOR 6030)			1
20	40072307	PLASTIC INNER PLATE	OPTIONAL PARTS (FOR 6030)			1
21	GMU01039000	CARBON BRUSH	OPTIONAL PARTS (COMMON PARTS 4530,6030)			1

HOW TO MAKE USE OF THIS PARTS LIST

1.As to "#01" and "#02" refer to the "Note" given at the bottom of the respective pages.

2.Codes on the "Qty" column

- Each numeral indicates the number of parts required.
- "0.1" and "2.5" indicate the length (in meters) of the respective parts.

3.Parentheses mean that the corresponding part is a subpart that constructs an assembly part.

4.Dotted lines on the Figures indicate assembly parts.

1. リストページの# 0 1、# 0 2の印は、ページ下の"注記"の説明を参照下さい。
2. 数量欄の数字は、個数を表し、0. 1、2. 5等の数値は、長さ（単位メートル）を表します。
3. 数量欄の（ ）は、組部品を構成している子部品であることを意味します。
4. イラストページの-----枠は、組構成であることを意味します。

NUMERICAL INDEX OF PARTS

PART NO	PAGE	REF NO.	PART NO	PAGE	REF NO.
11043205	2	24	GMU01018000	4	52~55
40036524	4	67	GMU01019000	4	52~55
40036525	4	68	GMU01020000	4	57
40036526	4	66	GMU01021000	4	59
40051769	6	6	GMU01022000	4	60
40072298	6	1	GMU01023000	4	61
40072300	6	13·17	GMU01024000	4	62
40072301	6	14·18	GMU01036000	2	47
40072302	6	15·16	GMU01039000	6	21
40072303	6	15·16	GMU01041000	4	69
40072304	6	13·17	GMU01042000	2	35
40072305	6	14·18	GMU01043000	2	34
40072306	6	19·20	HX00233000B	4	70
40072307	6	19·20	NM6100001SD	2	17
40083099	6	10	SM1040870TP	4	58
40084408	6	11	SM1040870TP	6	8
40084412	6	9	SM4040655SP	4	64
B2560220000	6	5	SM6030602TP	2	27
B2572229000	6	12	SM6044552TP	2	25
D8515761C00	2	15	SM6051602TP	2	50
F100200100A	4	63	SM6051602TP	4	50
GBR01335000	4	56	SM6052502TP	2	21
GMU01001000	2	4~6	SM6061202TP	6	2
GMU010010A0	2	1~3	SM8040502TP	2	32
GMU01001A00	2	4~6	SM8050412TP	6	7
GMU01001AA0	2	1~3	SS1110640TP	2	48
GMU01001B00	2	4~6	SS1110640TP	4	48
GMU01001BA0	2	1~3	SS5090710SP	2	14
GMU01002000	2	7	SS6150710SP	2	49
GMU01003000	2	16	SS6150710SP	4	49
GMU01004000	2	18	WP0430800SD	2	65
GMU01005000	2	8	WP0430800SD	4	65
GMU01006000	2	13	WP0520656SA	2	22
GMU01007000	2	11	WP0551016SH	2	51
GMU01008000	2	23	WP0551016SH	4	51
GMU01009000	2	31	WP0611626SP	6	4
GMU01010000	2	33	WP0751576SD	2	12
GMU01011000	2	30	WP1052000SD	2	10
GMU01012000	2	29	WS0610002KP	6	3
GMU01013000	2	45			
GMU010130A0	2	36			
GMU010140A0	2	44			
GMU01015000	2	46			
GMU01016000	4	52~55			
GMU01017000	4	52~55			