

MODEL : T041S

List No : 1489-02

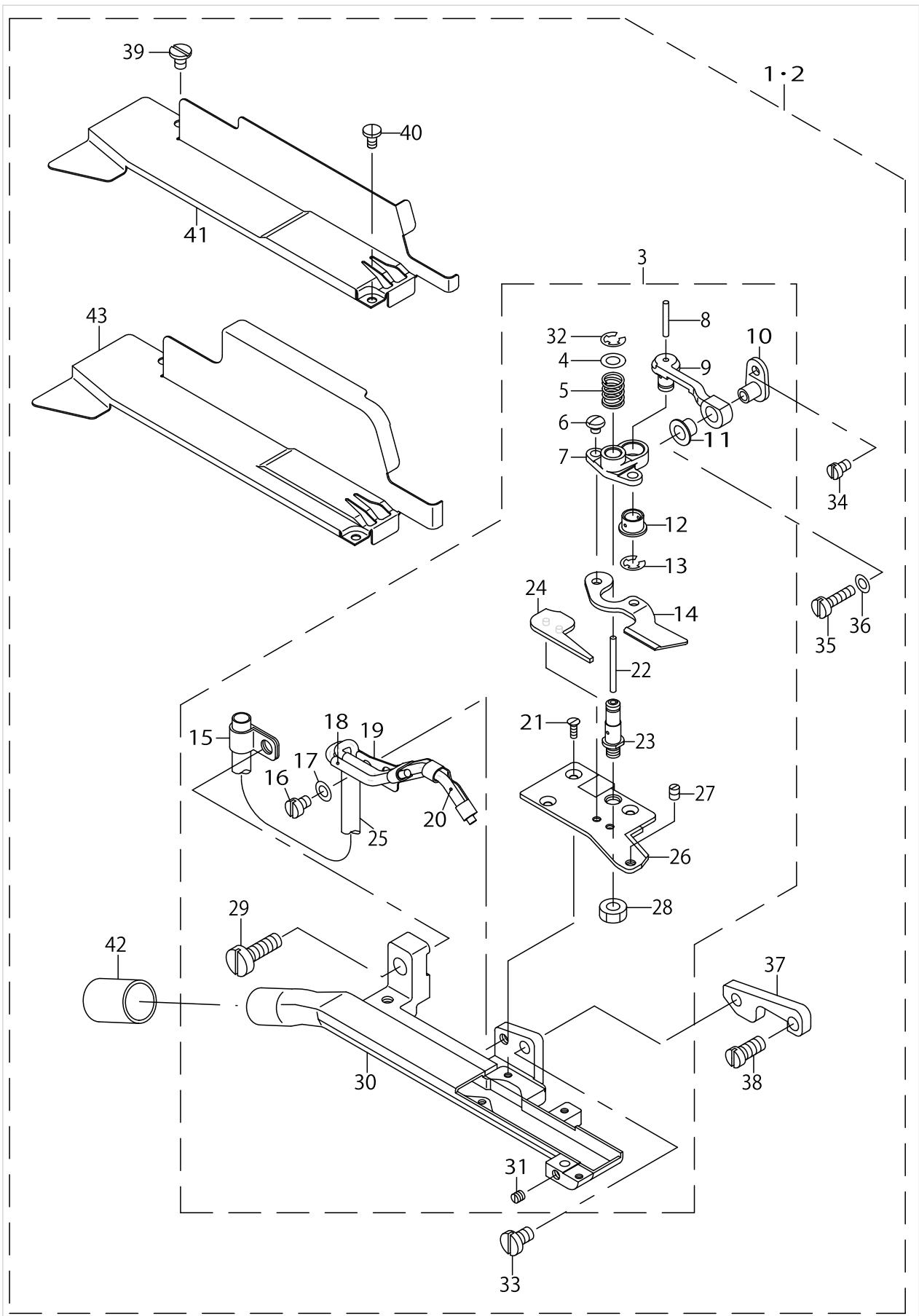
PARTS LIST

Published:09/10/2017

CONTENTS

COMPONENTS	1
HOW TO MAKE USE OF THIS PARTS LIST	3

COMPONENTS



COMPONENTS

No.	Parts No.	Parts name	Remarks	Level	Cons	Qty
1	40060703	T041S ASSY	FOR MOR-3900,MO-6900R			1
2	40075885	T041S ASSY				1
3	40060701	KNIFE PLATE ASM		*		1
4	WP0450000SD	WASHER 4.5X8X0.5		*		1
5	MAT03509000	SPRING		*		1
6	SS4080320TP	SCREW 1/8-44 L=3.4		*		2
7	40060696	MOVING KNIFE BRACKET		*		1
8	CQ202000000	OIL WICK		*		0.013
9	MAT03511000	KNIFE DRIVING RINK		*		1
10	MAT03512000	KNIFE DRIVING RINK BRACKET		*		1
11	MAT03510000	KNIFE DRIVING RINK PIECE		*		1
12	MAT03510000	KNIFE DRIVING RINK PIECE		*		1
13	RE0400000K0	E-RING 4		*		1
14	MAT03506000	MOVING KNIFE		*		1
15	MAT03516000	OIL TUBE HOLDER		*		1
16	SS7090520TP	SCREW 9/64-40 L= 4.5		*		1
17	WP0371016SD	WASHER 3.7X8X1		*		1
18	MAT035140A0	OIL TUBE ASM.		*		1
19	MAT04104000	OIL TUBE HOLDER		*		1
20	MAT035150A0	OIL TUBE ASM.		*		1
21	SS1060610SP	SCREW 3/32-56 L=5.5		*		3
22	CQ202000000	OIL WICK		*		0.021
23	MAT03507000	KNIFE BAR DRIVING SHAFT		*		1
24	40060692	AIR LEAK STOPPER		*		1
25	BP400000000	VINYL TUBE, WHITE D=4		*		0.09
26	40078823	FIXED KNIFE		*		1
27	SS8080610SP	SCREW 1/8-44 L=5.5		*		1
28	NS6110310SP	NUT 11/64-40		*		1
29	SS7121410TP	SCREW 3/16-28 L=14		*		1
30	40078825	KNIFE PLATE COMPL.		*		1
31	SS8080310TP	SCREW 1/8-44 L=2.8		*		1
32	RE0300000K0	E-RING 3		*		1
33	SS7110840SP	SCREW 11/64-40 L=7.8		*		1
34	SS7080520SP	SCREW 1/8-44 L=4.9		*		1
35	SS6081210SP	SCREW 1/8-44 L=12		*		1
36	WP0371016SD	WASHER 3.7X8X1		*		1
37	MAT04102000	KNIFE PLATE		*		1
38	SS7120910TP	SCREW 3/16-28 L=9		*		1
39	SS6090520SP	SCREW 9/64-40 L= 5.0		*		1
40	SS7060310SP	SCREW 3/32-56 L=3		*		1
41	40062490	KNIFE PLATE COVER	FOR MOR-3900,MO-6900R	*		1
42	40045961	VINYL PIPE		*		1
43	40075884	KNIFE PLATE COVER		*		1

HOW TO MAKE USE OF THIS PARTS LIST

1.As to "#01" and "#02" refer to the "Note" given at the bottom of the respective pages.

2.Codes on the "Qty" column

- Each numeral indicates the number of parts required.
- "0.1" and "2.5" indicate the length (in meters) of the respective parts.

3.Parentheses mean that the corresponding part is a subpart that constructs an assembly part.

4.Dotted lines on the Figures indicate assembly parts.

1. リストページの# 0 1、# 0 2の印は、ページ下の"注記"の説明を参照下さい。
2. 数量欄の数字は、個数を表し、0. 1、2. 5等の数値は、長さ（単位メートル）を表します。
3. 数量欄の（ ）は、組部品を構成している子部品であることを意味します。
4. イラストページの-----枠は、組構成であることを意味します。

NUMERICAL INDEX OF PARTS

PART NO	PAGE	REF NO.
40045961	2	42
40060692	2	24
40060696	2	7
40060701	2	3
40060703	2	1·2
40062490	2	41
40075884	2	43
40075885	2	1·2
40078823	2	26
40078825	2	30
BP400000000	2	25
CQ202000000	2	22
MAT03506000	2	14
MAT03507000	2	23
MAT03509000	2	5
MAT03510000	2	12
MAT03511000	2	9
MAT03512000	2	10
MAT035140A0	2	18
MAT035150A0	2	20
MAT03516000	2	15
MAT04102000	2	37
MAT04104000	2	19
NS6110310SP	2	28
RE0300000K0	2	32
RE0400000K0	2	13
SS1060610SP	2	21
SS4080320TP	2	6
SS6081210SP	2	35
SS6090520SP	2	39
SS7060310SP	2	40
SS7080520SP	2	34
SS7090520TP	2	16
SS7110840SP	2	33
SS7120910TP	2	38
SS7121410TP	2	29
SS8080310TP	2	31
SS8080610SP	2	27
WP0371016SD	2	36
WP0450000SD	2	4