

MODEL : MF-7724-U10-D60 A仕様

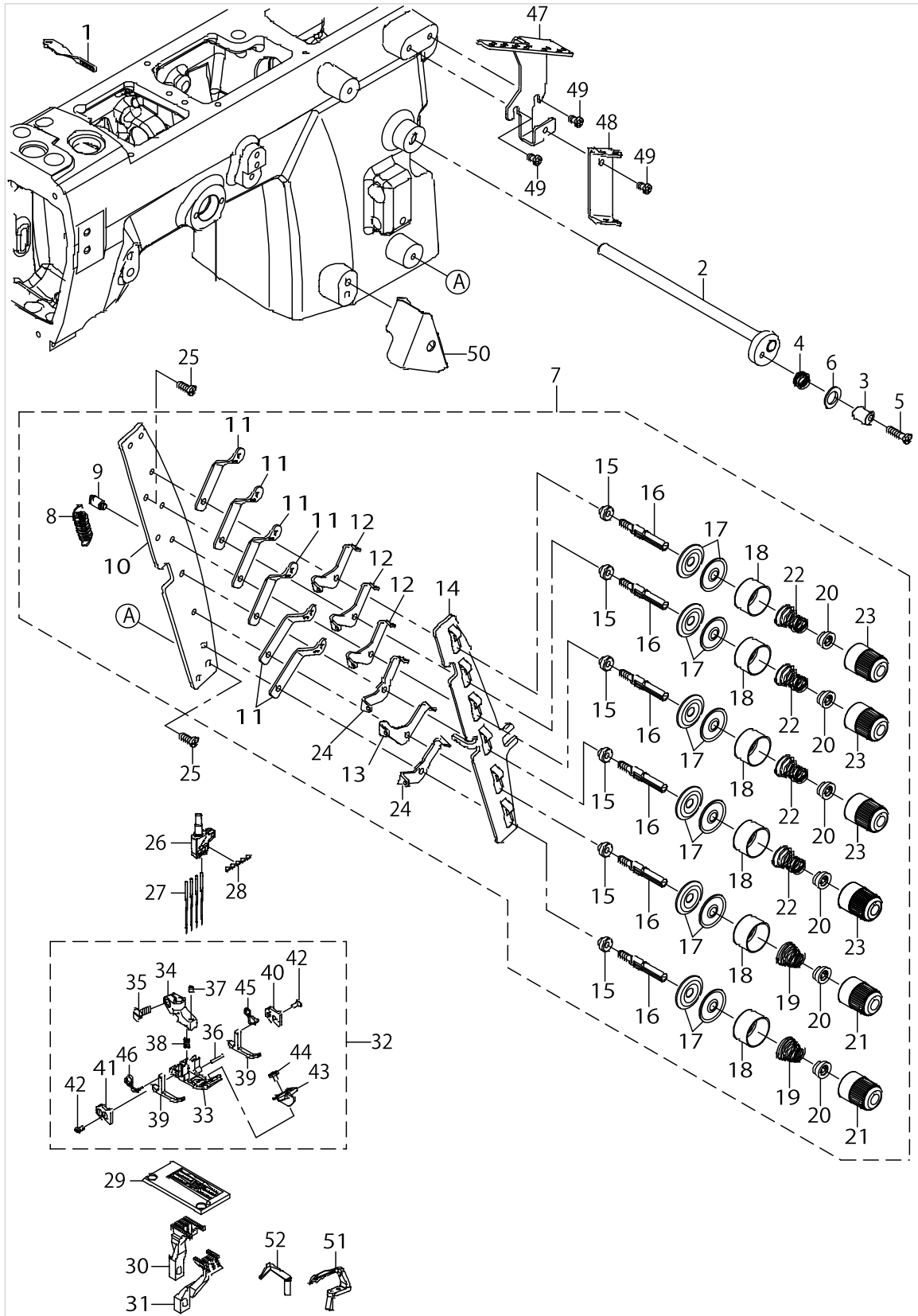
List No : 1476-00

PARTS LIST

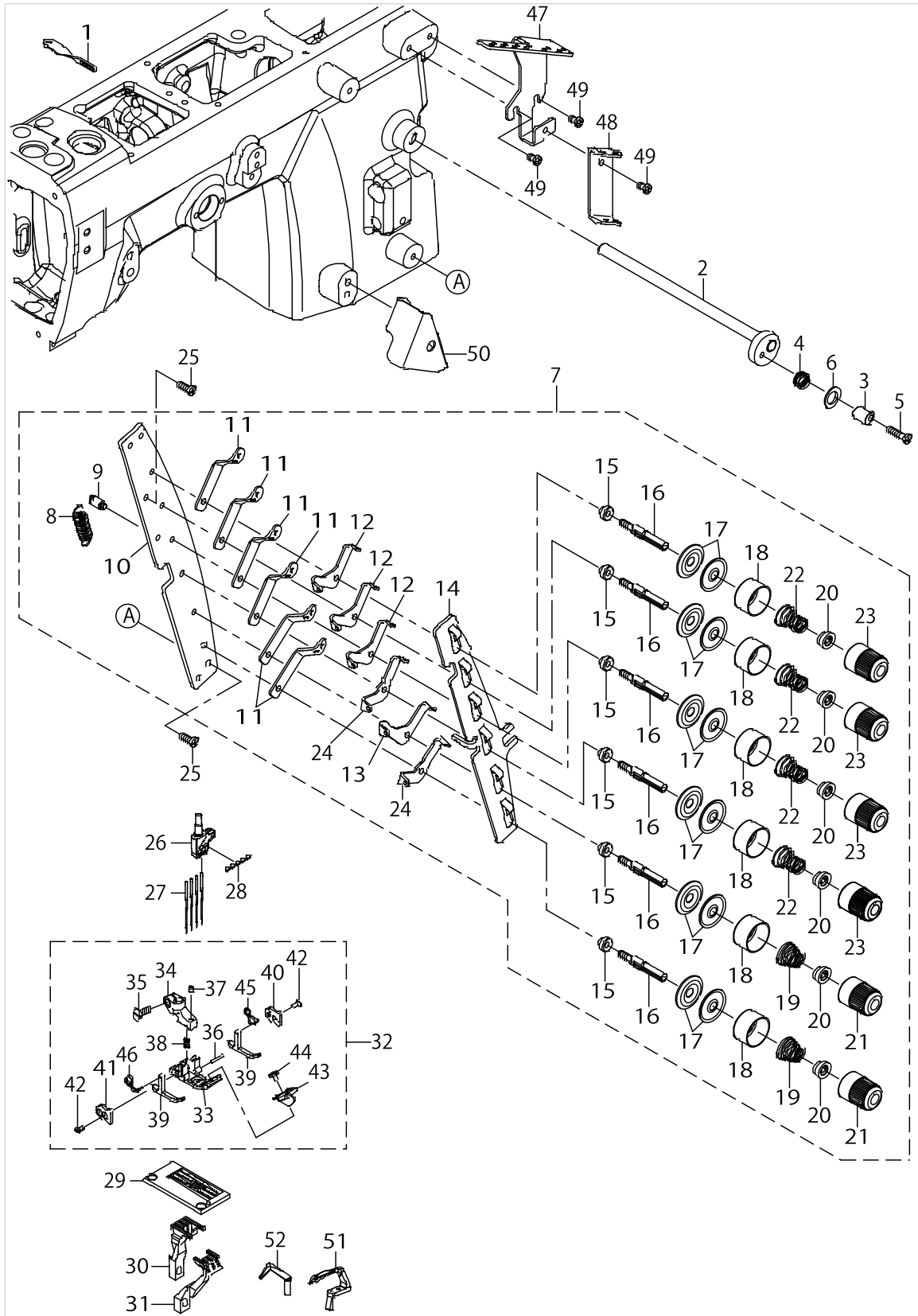
Published:09/10/2017

CONTENTS

MF-7724-U10-D60 (1)	1
MF-7724-U10-D60 (2)	5
HOW TO MAKE USE OF THIS PARTS LIST	7

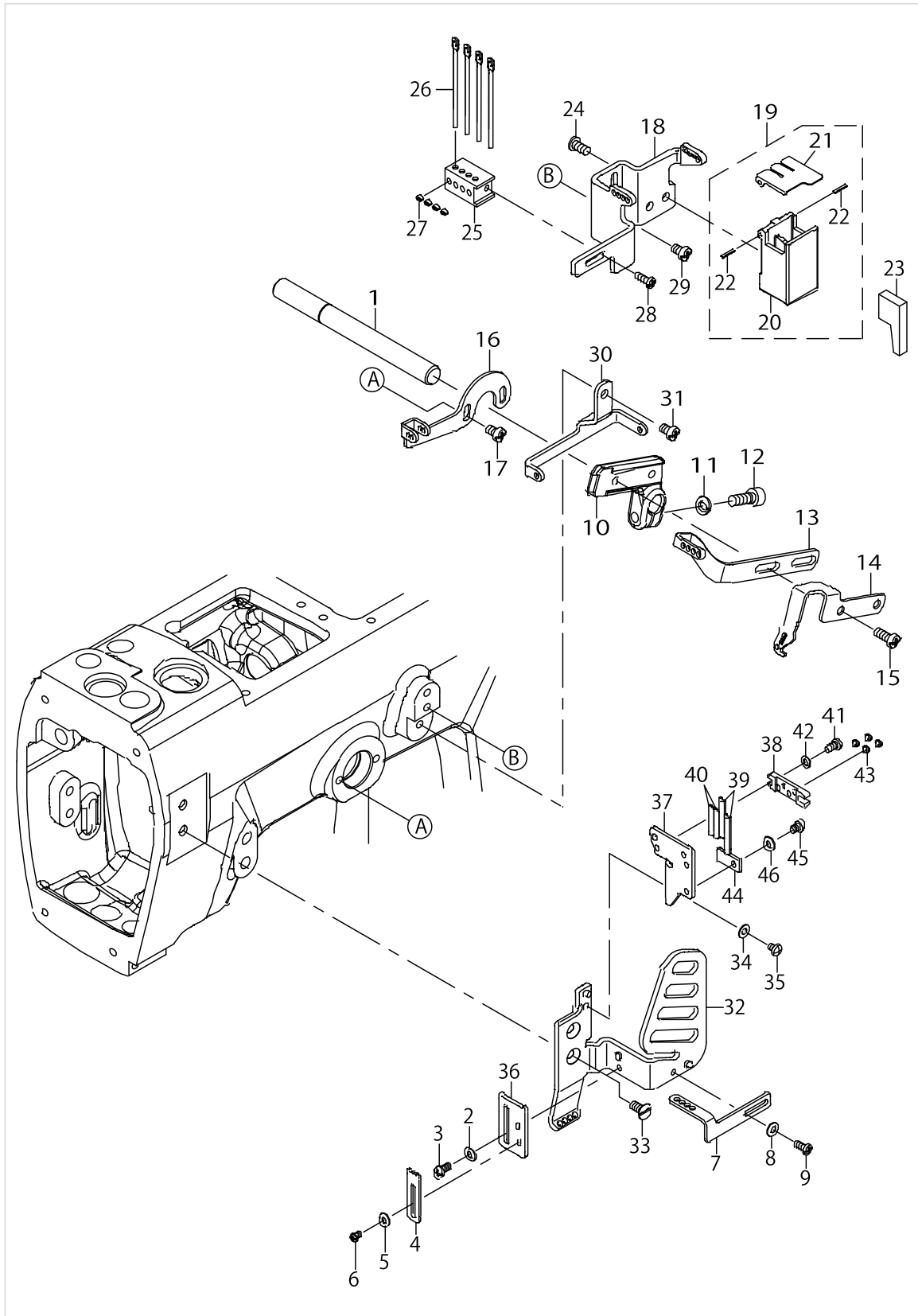


No.	Parts No.	Parts name	Remarks	Level	Cons	Qty
1	40052932	NEEDLE BAR EYELET				1
2	13341359	ASSY PULL OFF LEVER				1
3	13341409	TENS RELEASE ADJ ECC				1
4	13341508	SPRING				1
5	SM4041655SP	SCREW M4 L=16				1
6	WP0961046SC	WASHER				1
7	40040066	THREAD_TENSION_ASSY				1
8	B2008372000	THREAD TENSION SPRING		*		1
9	13340302	SHOULDER SCREW		*		1
10	40040094	TENSION_POST_SUPPORT		*		1
11	13340609	THREAD LEAD IN GUIDE		*		6
12	13341607	TENSION_DISC_EYELET_2		*		3
13	13340500	TENSION DISC EYELET		*		1
14	40040093	TENSION_DISK_SEPARATOR		*		1
15	13340708	SPACER		*		6
16	40042362	TENSION POST		*		6
17	13138201	THREAD TENSION DISK		*		12
18	40042366	THREAD TENSION DISK PRESSER		*		6
19	B3121804000	TENSION SPRING		*		2
20	40042365	SPRING BUSHING		*		6
21	40042363	KNOB		*		2
22	13140504	TENSION SPRING		*		4
23	40042364	KNOB GREEN		*		4
24	40043776	TENSION_DISC_EYELET_3		*		2
25	SM4041055SP	SCREW				2
26	40049609	NEEDLE_HEAD_60_ASSY				1
27	MSM101B1000	NEEDLE SMX1014B #10S				4
28	SM8030350TP	SCREW				5
29	40049382	THROAT PLATE				1
30	13353701	MAIN_FEED_DOG				1
31	13357603	DIFF_FEED_DOG				1
32	40049394	PRESSER_FOOT_ASSY				1
33	40049383	PRESSER_FOOT_BOTTOM		*		1
34	13375506	PRESSER_FOOT_HINGE		*		1
35	SM6040800SP	SCREW		*		1
36	13375209	PIVOT_PIN		*		1
37	SM8030412TP	SCREW		*		1
38	13377106	SPRING		*		1
39	13375100	P_F_YIELDING_SECTION		*		2
40	13375704	GUIDE_PLATE_R		*		1
41	13375605	GUIDE_PLATE_L		*		1
42	SM1850600SP	SCREW		*		4
43	13376900	PRESSER_FOOT_GUIDE		*		1
44	13377007	SCREW		*		1
45	13375407	SPRING_R		*		1
46	13375308	SPRING_L		*		1
47	40034355	THREAD_GUIDE_PLATE				1



MF-7724-U10-D60 (1)

No.	Parts No.	Parts name	Remarks	Level	Cons	Qty
48	13340104	THREAD GUIDE				1
49	SM4040655SP	SCREW M4 L=6				3
50	40056782	THREAD COVER				1
51	40051448	LOOPER MF7724-D60				1
52	40052924	REAR NDL GUARD				1



MF-7724-U10-D60 (2)

No.	Parts No.	Parts name	Remarks	Level	Cons	Qty
1	13324306	SHAFT				1
2	WP0320501SC	WASHER M3				1
3	SM4030655SP	SCREW				1
4	13327002	THD STRIKE OFF PLATE R				1
5	WP0280501SC	WASHER M2.6				1
6	SM4850455SP	SCREW				1
7	40034359	THREAD_GUIDE				1
8	WP0320501SC	WASHER M3				1
9	SM4030655SP	SCREW				1
10	13324702	HOLDER TAKE UP EYELET				1
11	WS0510002KN	SPRING WASHER				1
12	SM6051402TP	SCREW M5X0.8 L=14				1
13	40034360	NDL_THREAD_TAKE_UP				1
14	13324900	UP LPR THREAD TAKE UP				1
15	SM4041055SP	SCREW				2
16	40052929	THREAD GUIDE				1
17	SM4040655SP	SCREW M4 L=6				2
18	40034356	THREAD_TENSION_GUIDE				1
19	40034742	SILICON_OIL_TANK_ASSY				1
20	40034366	TANK		*		1
21	B9213850000	SILICONE OIL TANK COVER, UPPER		*		1
22	PS0150082KH	SPRING PIN		*		2
23	B9214850000	HEAT REMOVING FELT				1
24	ST4040851SN	TAPPING SCREW M4X8				2
25	40034358	HOLDER				1
26	30391601	NEEDLE THREAD EYELET				4
27	SM8030350TP	SCREW				4
28	SM4030855SN	SCREW M3 L=8.0				1
29	SM4040655SP	SCREW M4 L=6				2
30	13325402	THREAD GUIDE				1
31	SM4040655SP	SCREW M4 L=6				1
32	40034354	COVER				1
33	SM1040800SP	SCREW				2
34	WP0320501SC	WASHER M3				1
35	SM4030455SP	SCREW				1
36	13325600	THD STRIKE OFF PLATE				1
37	40052928	NDL THD STRIKE OFF				1
38	40052926	GUIDE BRACKET				1
39	40052925	NDL THD STRIKE OFF PLATE				2
40	40052927	NDL THD STRIKE OFF PLATE M				2
41	SM4030655SP	SCREW				2
42	WP0320500SC	WASHER M3				2
43	SM8030350TP	SCREW				4
44	40056758	NDL THD STRIKE OFF				1
45	SM4030455SP	SCREW				1
46	WP0320501SC	WASHER M3				1

HOW TO MAKE USE OF THIS PARTS LIST

1.As to "#01" and "#02" refer to the "Note" given at the bottom of the respective pages.

2.Codes on the "Qty" column

- Each numeral indicates the number of parts required.
- "0.1" and "2.5" indicate the length (in meters) of the respective parts.

3.Parentheses mean that the corresponding part is a subpart that constructs an assembly part.

4.Dotted lines on the Figures indicate assembly parts.

1. リストページの# 0 1、# 0 2の印は、ページ下の"注記"の説明を参照下さい。
2. 数量欄の数字は、個数を表し、0. 1、2. 5等の数値は、長さ（単位メートル）を表します。
3. 数量欄の（ ）は、組部品を構成している子部品であることを意味します。
4. イラストページの-----枠は、組構成であることを意味します。

ALL PARTS NOT MENTIONED IN THIS PARTS LIST ARE SAME AS THOSE OF
MODEL MF-7700 OTHER PARTS LIST RELATED TO THIS MODEL.
*MF-7700 SERIES(NO.1375 PART NO.13370002)

このパーツリスト記載以外の部品はMF-7700と共通です。
この機種に関連するパーツリストとして下記のパーツリストがあります。
*MF-7700シリーズ（NO. 1375 品番13370002）

NUMERICAL INDEX OF PARTS

PART NO	PAGE	REF NO.	PART NO	PAGE	REF NO.
13138201	2	17	40042366	2	18
13140504	2	22	40043776	2	24
13324306	6	1	40049382	2	29
13324702	6	10	40049383	2	33
13324900	6	14	40049394	2	32
13325402	6	30	40049609	2	26
13325600	6	36	40051448	4	51
13327002	6	4	40052924	4	52
13340104	4	48	40052925	6	39
13340302	2	9	40052926	6	38
13340500	2	13	40052927	6	40
13340609	2	11	40052928	6	37
13340708	2	15	40052929	6	16
13341359	2	2	40052932	2	1
13341409	2	3	40056758	6	44
13341508	2	4	40056782	4	50
13341607	2	12	B2008372000	2	8
13353701	2	30	B3121804000	2	19
13357603	2	31	B9213850000	6	21
13375100	2	39	B9214850000	6	23
13375209	2	36	MSM101B1000	2	27
13375308	2	46	PS0150082KH	6	22
13375407	2	45	SM1040800SP	6	33
13375506	2	34	SM1850600SP	2	42
13375605	2	41	SM4030455SP	6	45
13375704	2	40	SM4030655SP	6	41
13376900	2	43	SM4030855SN	6	28
13377007	2	44	SM4040655SP	4	49
13377106	2	38	SM4040655SP	6	31
30391601	6	26	SM4041055SP	2	25
40034354	6	32	SM4041055SP	6	15
40034355	2	47	SM4041655SP	2	5
40034356	6	18	SM4850455SP	6	6
40034358	6	25	SM6040800SP	2	35
40034359	6	7	SM6051402TP	6	12
40034360	6	13	SM8030350TP	2	28
40034366	6	20	SM8030350TP	6	43
40034742	6	19	SM8030412TP	2	37
40040066	2	7	ST4040851SN	6	24
40040093	2	14	WP0280501SC	6	5
40040094	2	10	WP0320500SC	6	42
40042362	2	16	WP0320501SC	6	46
40042363	2	21	WP0961046SC	2	6
40042364	2	23	WS0510002KN	6	11
40042365	2	20			