

MODEL : IP-110/SC-510

List No : 1470-01

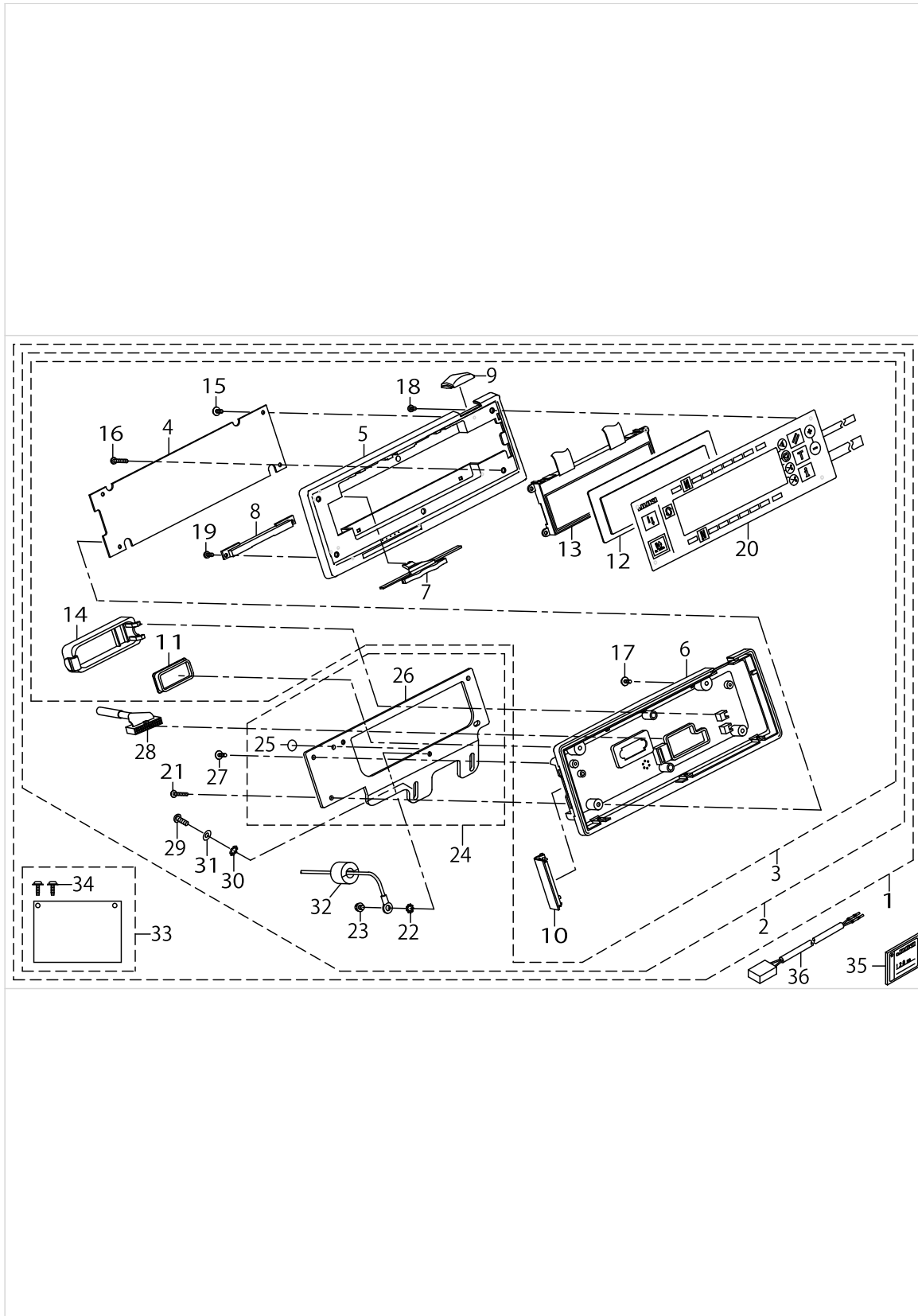
PARTS LIST

Published:09/10/2017

CONTENTS

OPERATION PANEL INCORPORATED IN MACHINE HEAD.....	1
HOW TO MAKE USE OF THIS PARTS LIST	3

OPERATION PANEL INCORPORATED IN MACHINE HEAD



OPERATION PANEL INCORPORATED IN MACHINE HEAD

No.	Parts No.	Parts name	Remarks	Level	Cons	Qty
1	40054945	IP-110E/SC-510 IPOPOP UNIT				1
2	40054944	IP-110 TYPE-E COMPLETE		*		1
3	40055186	IP-110 TYPE-E ASSY		*		1
4	40046138	PANEL PCB ASSY		*		1
5	40055002	FRONT PANEL		*		1
6	40055005	BACK PANEL		*		1
7	40005844	SPEED ADJUSTING KNOB		*		1
8	40005845	SPEED KNOB SUPPORT		*		1
9	40005846	INDICATION WINDOW		*		1
10	40055007	MEDIA COVER		*		1
11	40005848	D-SUB 9P COVER		*		1
12	40005847	LCD COVER		*		1
13	KG000000140	LCD		*		1
14	M1003371000	CORD EXIT COVER		*		1
15	SV4030802SN	TAPPING SCREW WITH FLANGE M3X8		*		3
16	SM4032001SC	SCREW M3X0.5 L=20		*		1
17	SV4030802SN	TAPPING SCREW WITH FLANGE M3X8		*		2
18	SM4030601SC	SCREW M3 X 6		*		3
19	ST4030851SN	SCREW		*		2
20	40005900	PANEL SHEET ASSY		*		1
21	SV4032502SN	TAPPING SCREW		*		2
22	WT0430002KE	TOOTHED WASHER		*		1
23	SL4040691SC	SCREW M4 L=6		*		1
24	40024472	PANEL BRACKET E ASSY		*		1
25	10004109	GROUND MARK		*		1
26	40024474	PANEL BRACKET E		*		1
27	SV4031001SN	TAPPING SCREW		*		2
28	40005902	PANEL CABLE B ASSY		*		1
29	SS4111215SP	SCREW 11/64-40 L=12		*		2
30	WT0530002KS	TOOTHED WASHER D=5.3		*		2
31	WP0450801SD	SCREW 11/64-40 L=12		*		2
32	HN002100000	FERRITE CLAMP		*		1
33	40023801	SC-510 IPOPOP_PCB_A_ASSY		*		1
34	SV4030802SN	TAPPING SCREW WITH FLANGE M3X8		*		2
35	40000100	COMPACTFLASH(TM)	OPTIONAL PARTS			1
36	40008168	OP SWITCH CABLE A ASSY	OPTIONAL PARTS			1

HOW TO MAKE USE OF THIS PARTS LIST

- 1.As to "#01" and "#02" refer to the "Note" given at the bottom of the respective pages.
- 2.Codes on the "Qty" column
 - Each numeral indicates the number of parts required.
 - "0.1" and "2.5" indicate the length (in meters) of the respective parts.
- 3.Parentheses mean that the corresponding part is a subpart that constructs an assembly part.
- 4.Dotted lines on the Figures indicate assembly parts.

1. リストページの# 0 1、# 0 2の印は、ページ下の"注記"の説明を参照下さい。
2. 数量欄の数字は、個数を表し、0. 1、2. 5等の数値は、長さ（単位メートル）を表します。
3. 数量欄の（ ）は、組部品を構成している子部品であることを意味します。
4. イラストページの-----枠は、組構成であることを意味します。

※"コンパクトフラッシュ (TM)"は米国サンディスク社の登録商標です。

*"CompactFlash(TM)"is the registered trademark of SanDisk Corporation,U.S.A

NUMERICAL INDEX OF PARTS

PART NO	PAGE	REF NO.
10004109	2	25
40000100	2	35
40005844	2	7
40005845	2	8
40005846	2	9
40005847	2	12
40005848	2	11
40005900	2	20
40005902	2	28
40008168	2	36
40023801	2	33
40024472	2	24
40024474	2	26
40046138	2	4
40054944	2	2
40054945	2	1
40055002	2	5
40055005	2	6
40055007	2	10
40055186	2	3
HN002100000	2	32
KG000000140	2	13
M1003371000	2	14
SL4040691SC	2	23
SM4030601SC	2	18
SM4032001SC	2	16
SS4111215SP	2	29
ST4030851SN	2	19
SV4030802SN	2	34
SV4031001SN	2	27
SV4032502SN	2	21
WP0450801SD	2	31
WT0430002KE	2	22
WT0530002KS	2	30