

MODEL : DU-1181N (Machine number : ~8D7EJ01535)  
List No : 1455-01

# PARTS LIST

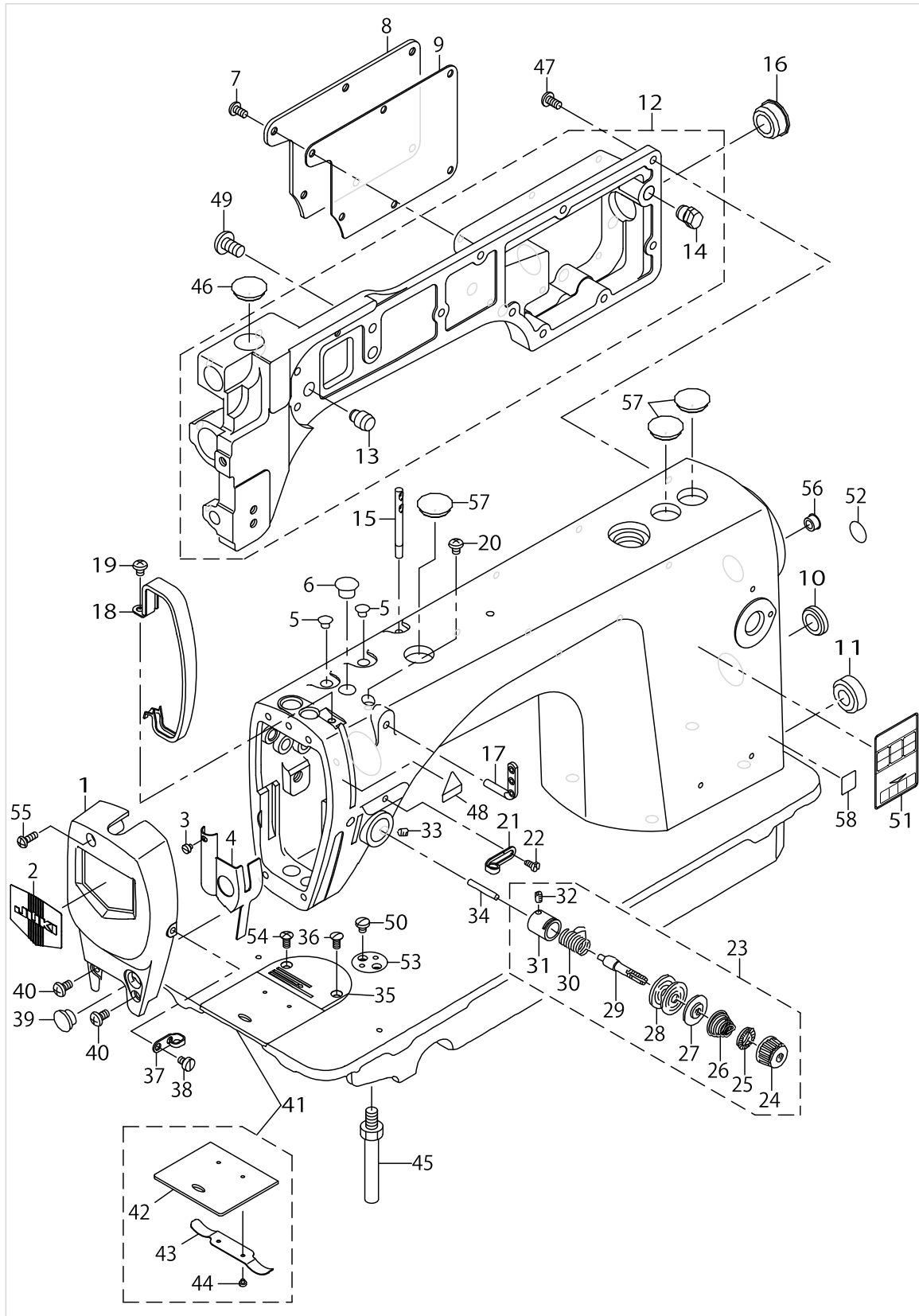
Published:09/10/2017

## CONTENTS

---

MACHINE FRAME & MISCELLANEOUS COVER COMPONENTS .....	1
MAIN SHAFT & THREAD-UP LEVER COMPONENTS .....	5
NEEDLE BAR, UPRIGHT SHAFT & HOOK DRIVING SHAFT COMPONENTS .....	7
HAND LIFTER COMPONENTS .....	9
FEED MECHANISM COMPONENTS.....	11
UPPER FEED MECHANISM COMPONENTS .....	15
OIL LUBRICATION COMPONENTS.....	19
OIL RESERVOIR COMPONENTS .....	21
BELT COVER & BOBBIN COMPONENTS.....	23
THREAD STAND COMPONENTS.....	25
HOW TO MAKE USE OF THIS PARTS LIST .....	27

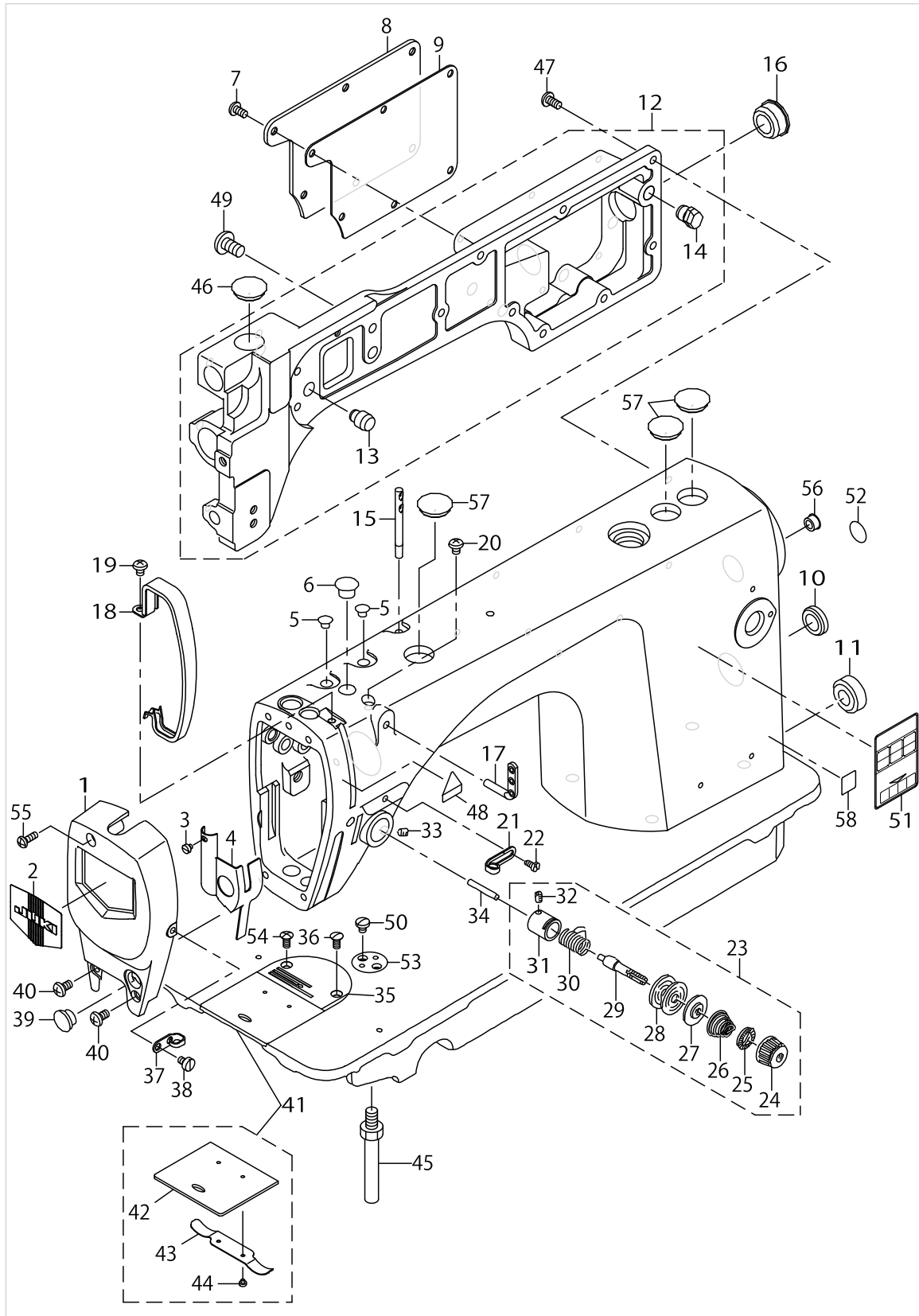
# MACHINE FRAME & MISCELLANEOUS COVER COMPONENTS



MACHINE FRAME & MISCELLANEOUS COVER COMPONENTS

No.	Parts No.	Parts name	Remarks	Level	Cons	Qty
1	40022646	FACE PLATE				1
2	22902506	FACE PLATE				1
3	SS6080320SP	SCREW 1/8-44 L= 2.5				1
4	40021790	FACE PLATE OIL SHIELD ASM.				1
5	TA0850604R0	RUBBER PLUG				2
6	TA1250705R0	RUBBER PLUG				1
7	SS4120915SP	SCREW 3/16-28 L=9				6
8	40022647	WINDOW PLATE				1
9	40021567	GASKET				1
10	TA2000502R0	RUBBER PLUG				1
11	TA2101002R0	RUBBER PLUG				1
12	40021907	UPPER FEED BASE COMPL.				1
13	40021592	PIN(A)		*		1
14	40021593	PIN(B)		*		1
15	22958300	NEEDLE THREAD GUIDE PIN				1
16	TA2351004R0	RUBBER PLUG				1
17	40023295	THREE HOLE THREAD EYELET				1
18	11415205	THREAD TAKE-UP LEVER COVER(JE)				1
19	SS4120615SP	SCREW 3/16-28 L=6				1
20	SS4120615SP	SCREW 3/16-28 L=6				1
21	23626104	ARM THREAD GUIDE A				1
22	11001500	SCREW				1
23	22962054	THREAD TENSION ASM.				1
24	22921308	THREAD TENSION NUT		*		1
25	22921407	ROTATION STOPPER		*		1
26	22962005	THREAD TENSION SPRING		*		1
27	22921803	DISK STOPPER		*		1
28	22921506	THREAD TENSION DISK		*		2
29	22921209	THREAD TENSION POST		*		1
30	22921605	THREAD TAKE-UP SPRING		*		1
31	22945307	THREAD TENSION POST BASE		*		1
32	SS8090670SP	SCREW 9/64-40 L= 5.5		*		1
33	SS8150710TP	SCREW 15/64-28 L=7				1
34	22920904	PIN				1
35	40021615	THROAT PLATE				1
36	SS2110920TP	SCREW 11/64-40 L=8.5				1
37	22920607	ARM THREAD GUIDE B				1
38	SS6110610TP	SCREW 11/64-40 L=6				1
39	TA1250406R0	RUBBER PLUG D=12.5 L=4				1
40	SS4120915SP	SCREW 3/16-28 L=9				2
41	22901250	SLIDE PLATE ASM.				1
42	22901201	SLIDE PLATE		*		1
43	22901300	SLIDE PLATE SPRING		*		1
44	SS6060210SP	SCREW 3/32-56 L= 1.9		*		2
45	22901003	BED SCREW STUD				4
46	TA2050406R0	RUBBER PLUG				1
47	SS4121015SP	SCREW 3/16-28 L=10				10

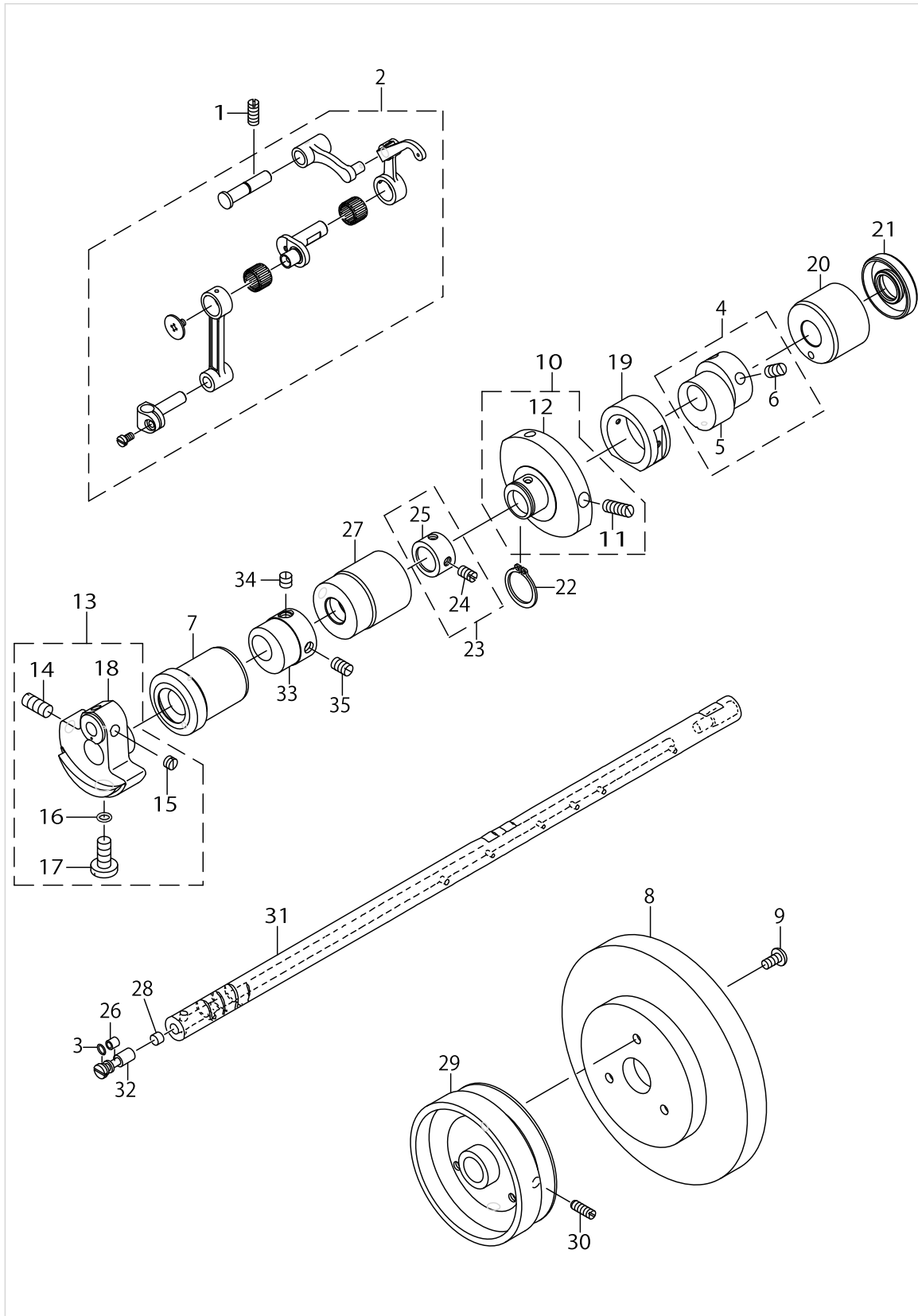
# MACHINE FRAME & MISCELLANEOUS COVER COMPONENTS



MACHINE FRAME & MISCELLANEOUS COVER COMPONENTS

No.	Parts No.	Parts name	Remarks	Level	Cons	Qty
48	CM300200001	ATTENTION SEAL 16				1
49	SS4701415SD	SCREW				1
50	SS7110540SP	SCREW 11/64-40 L=5				2
51	CM301200001	SAFETY LABEL_S				1
52	22901805	GROUND MARK				1
53	22902605	RULER STOP SEAT				1
54	SS2110915SP	SCREW 11/64-40 L=8.5				1
55	SS4112215SP	SCREW 11/64-40 L=22				1
56	TA0950806R0	RUBBER PLUG				1
57	TA2050406R0	RUBBER PLUG				3
58	CM600100101	WEEE MARK LABEL S	FOR JE			1

# MAIN SHAFT & THREAD-UP LEVER COMPONENTS

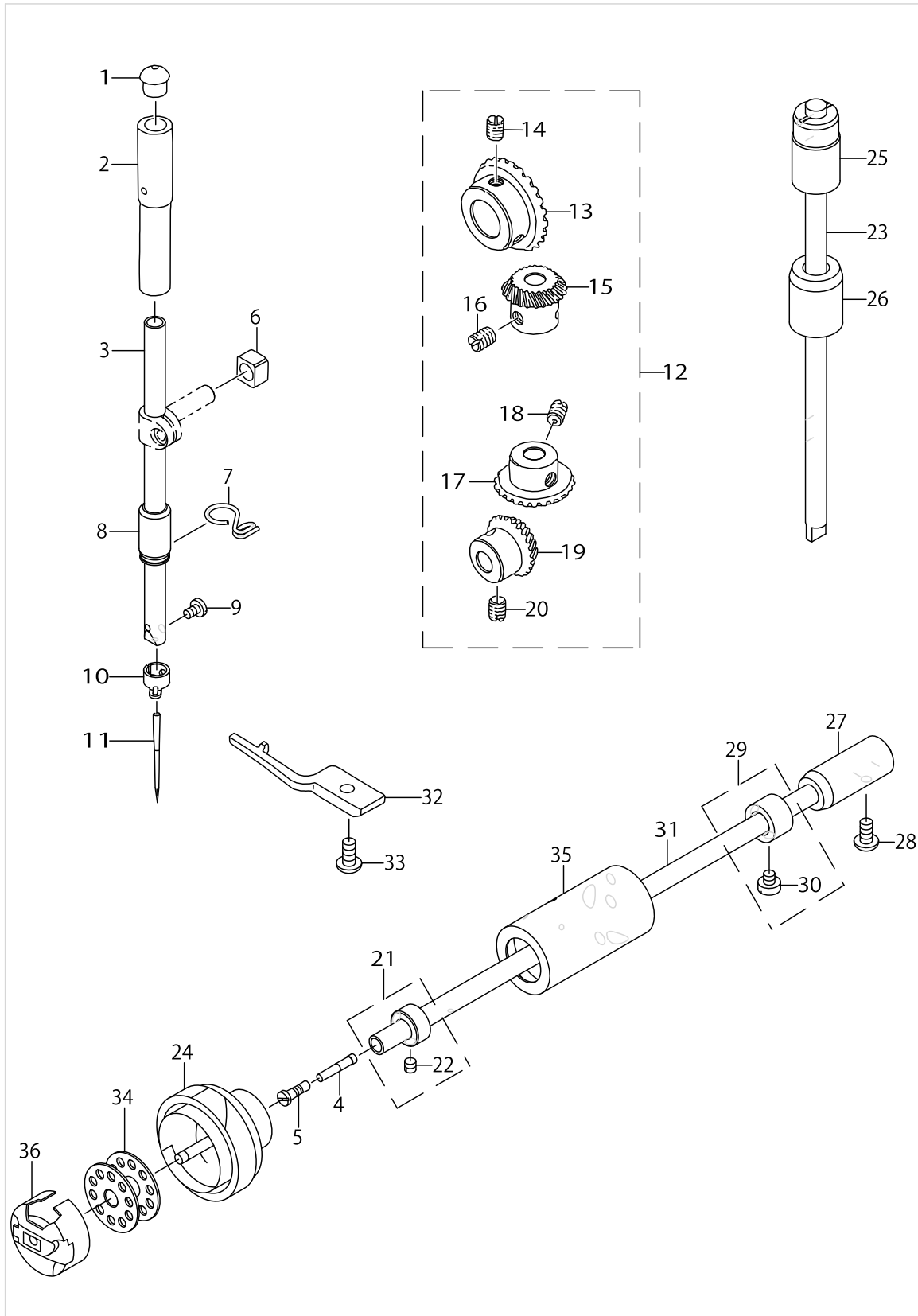


MAIN SHAFT & THREAD-UP LEVER COMPONENTS

No.	Parts No.	Parts name	Remarks	Level	Cons	Qty
1	SS8151150TP	SCREW 15/64-28 L=10.5				1
2	40021775	THREAD TAKE-UP LEVER ASM.				1
3	RO029180100	RUBBER RING				1
4	40021773	ECCENTRIC FEED CAM ASM.				1
5	40021574	ECCENTRIC FEED CAM		*		1
6	SS8660810TP	SCREW 1/4-40 L=8		*		2
7	22903207	MAIN SHAFT BUSHING, FRONT				1
8	40026457	HAND WHEEL B				1
9	SM4051055SP	SCREW				3
10	40021774	VERTICAL FEED CAM ASM.				1
11	SS8681650TP	SCREW 9/32-28 L=16		*		2
12	40021575	VERTICAL FEED CAM		*		1
13	40021770	COUNTER WEIGHT ASM.				1
14	SS8681650TP	SCREW 9/32-28 L=16		*		1
15	SS8660410SP	SCREW 1/4-40 L= 4.2		*		2
16	RO044240100	RUBBER RING		*		1
17	SS7681650TP	SCREW 9/32-28 L=16		*		1
18	40021635	COUNTER WEIGHT		*		1
19	40024118	PITMAN SLEEVE				1
20	40048594	MAIN SHAFT BUSHING				1
21	11002508	OIL SEAL				1
22	RC1850001KP	SNAP RING 18.5				1
23	22904155	MAIN SHAFT THRUST COLLAR ASM.				1
24	SS8660610TP	SCREW 1/4-40 L=6		*		2
25	22904106	MAIN SHAFT THRUST COLLAR		*		1
26	B1215552000	OIL ADJUSTING COLLAR				1
27	22903306	BUSHING,INTERMEDIATE				1
28	B1226490000	ROLLER FELT				1
29	40026454	HAND WHEEL A				1
30	SS8151550SP	SCREW 15/64-28 L=15				2
31	22903009	MAIN SHAFT				1
32	22903900	ADJUSTING PIN				1
33	40023031	FEED DRIVE ECCENTRIC CAM				1
34	SS8660610TP	SCREW 1/4-40 L=6				1
35	SS8661030SP	SCREW 1/4-40 L=10				1



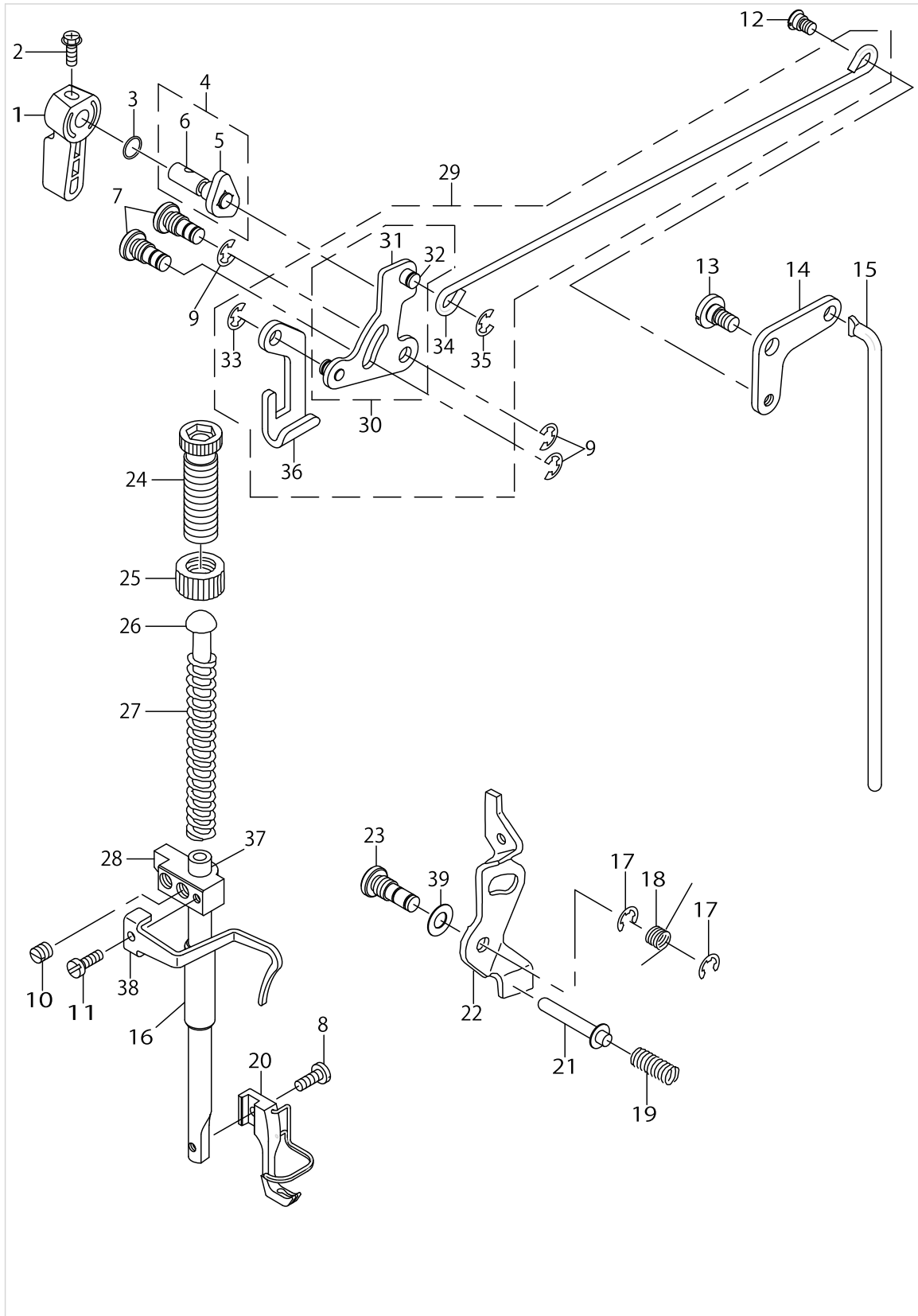
NEEDLE BAR, UPRIGHT SHAFT & HOOK DRIVING SHAFT COMPONENTS



NEEDLE BAR, UPRIGHT SHAFT & HOOK DRIVING SHAFT COMPONENTS

No.	Parts No.	Parts name	Remarks	Level	Cons	Qty
1	22901409	NEEDLE BAR UPPER BUSH CAP				1
2	22906101	NEEDLE BAR BUSHING, UPPER				1
3	40023030	NEEDLE BAR				1
4	11404704	OIL WICK				1
5	22916506	SET SCREW				1
6	B1414555000	SLIDE BLOCK				1
7	40023223	NEEDLE BAR THREAD GUIDE				1
8	40021604	NEEDLE BAR BUSHING, LOWER				1
9	SS7080510TP	SCREW 1/8-44 L=4.5				1
10	40024124	NEEDLE BAR THREAD GUIDE				1
11	MDP170B2100	NEEDLE DPX17 #21				1
12	40032086	GEAR ASM.				1
13	40032087	GEAR_UPPER		*		1
14	SS8660810TP	SCREW 1/4-40 L=8		*		2
15	40032088	GEAR_UPPER		*		1
16	SS8660810TP	SCREW 1/4-40 L=8		*		2
17	40032089	GEAR_LOWER		*		1
18	SS8660810TP	SCREW 1/4-40 L=8		*		2
19	40032090	GEAR_LOWER		*		1
20	SS8660810TP	SCREW 1/4-40 L=8		*		2
21	22917058	THRUST COLLAR ASM., FRONT				1
22	SS8110410TP	SCREW 11/64-40 L= 3.5		*		2
23	40021612	UPRIGHT SHAFT				1
24	40032702	HOOK ASM.				1
25	22905103	UPRIGHT SHAFT BUSHING, UPPER				1
26	22905202	UPRIGHT SHAFT BUSHING, LOWER				1
27	22916308	HOOK DRIVING SHAFT BUSH, REAR				1
28	SS4120915SP	SCREW 3/16-28 L=9				1
29	22917157	THRUST COLLAR ASM., REAR				1
30	SS6110420TP	SCREW 11/64-40 L=4.8		*		2
31	11403300	HOOK DRIVING SHAFT				1
32	40021622	BOBBIN CASE POSITIONING FINGER				1
33	SS4110915TP	SCREW 11/64-40 L=9				1
34	40021610	BOBBIN				1
35	40021613	HOOK DRIVING SHAFT BUSH, FRONT				1
36	40021609	BOBBIN CASE ASM.				1

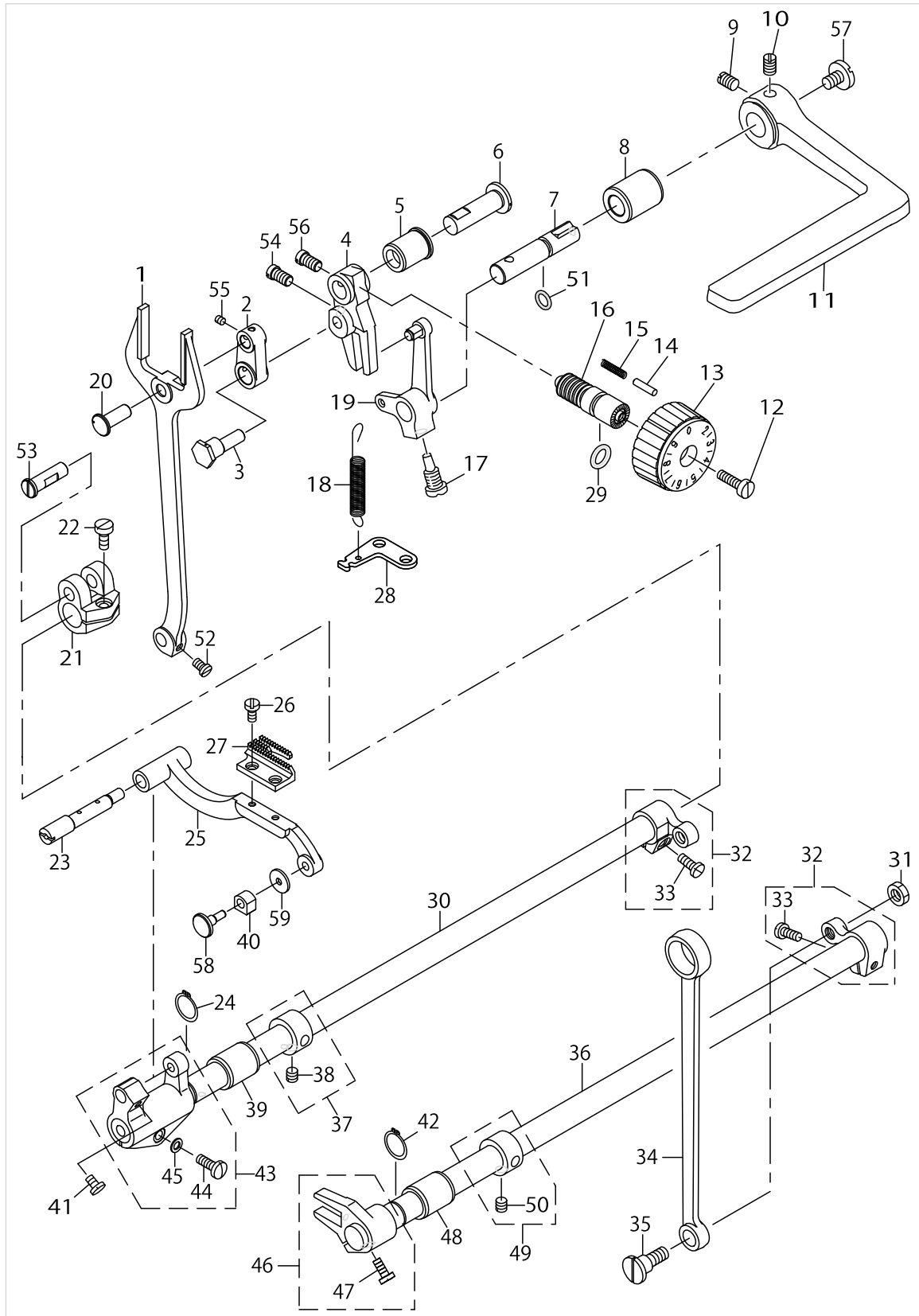
HAND LIFTER COMPONENTS



HAND LIFTER COMPONENTS

No.	Parts No.	Parts name	Remarks	Level	Cons	Qty
1	22907802	HAND LIFTER				1
2	B1521555000	SCREW				1
3	RO037180100	RUBBER RING				1
4	40021570	HAND LIFTER CAM ASM.				1
5	22908503	HAND LIFTER CAM		*		1
6	22908602	HAND LIFTER CAM SHAFT		*		1
7	22908701	LINK SHAFT				2
8	SS7091110TP	SCREW 9/64-40 L=10.5				1
9	RE0500000K0	E-RING 5				3
10	SS8660610TP	SCREW 1/4-40 L=6				1
11	SS6090910SP	SCREW 9/64-40 L=9				2
12	22908909	HINGE SCREW				1
13	SD0720331SP	HINGE SCREW D= 7.24 H= 3.3				1
14	22908800	KNEE LIFTER LINK				1
15	22909006	KNEE LIFTER CONNECTING ROD				1
16	B1510155000	PRESSER BAR LOWER BUSHING				1
17	RE0500000K0	E-RING				2
18	22920201	RETURN SPRING				1
19	22920409	THREAD RELEASE PIN SPRING				1
20	40021791	PRESSER FOOT ASM.				1
21	22920300	THREAD RELEASE SUPPORTING PIN				1
22	22920003	THREAD RELEASE PLATE				1
23	22920102	TENION RELEASE SHAFT				1
24	22907505	PRESSER SPRING REGULATOR				1
25	22907604	PRESSER SPRING REGULATOR NUT				1
26	22907703	PRESSER GUIDE BAR				1
27	40021617	PRESSER SPRING				1
28	40021568	PRESSER BAR GUIDE BRACKET				1
29	40024122	KNEE LIFTING CROSS ROD ASM.				1
30	40024132	LIFTING LINK ASM.		*		1
31	22908107	LIFTING LINK		*		1
32	22908206	LIFTING LINK PIN		*		2
33	RE0500000K0	E-RING 5		*		1
34	22908305	KNEE LIFTER SIDE ROD		*		1
35	RE0500000K0	E-RING 5		*		1
36	40023246	LIFTING PLATE		*		1
37	40017805	PRESSER BAR				1
38	40021597	THREAD GUIDE				1
39	40031286	WASHER				1

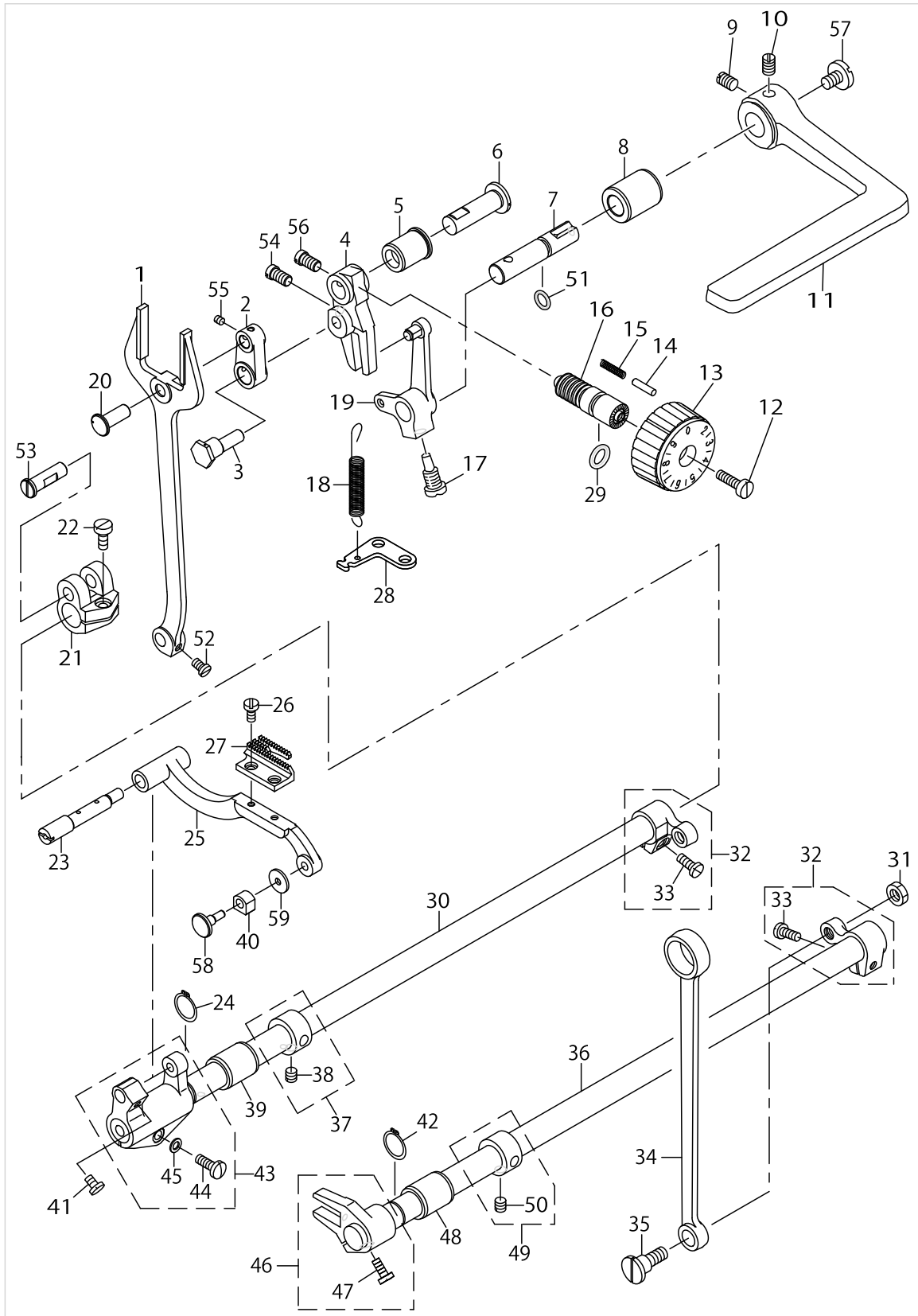
# FEED MECHANISM COMPONENTS



FEED MECHANISM COMPONENTS

No.	Parts No.	Parts name	Remarks	Level	Cons	Qty
1	40024130	PITMAN ROD				1
2	40026195	FEED REGULATOR CONNECTING LINK				1
3	40024119	WALKING FOOT PIN				1
4	40024117	FEED REGULATOR				1
5	40038959	FEED REGULATOR BUSHING				1
6	40026519	FEED REGULATOR SHAFT				1
7	40038991	FEED REVERSE SHAFT				1
8	40038958	FEED REVERSE BUSHING				1
9	SM8061050TP	SCREW M6 L=10				1
10	SM8061010TP	SCREW M6 L=10				1
11	22912703	FEED LEVER				1
12	SS6121860SP	SCREW 3/16-28 L=18				1
13	40021571	FEED DIAL				1
14	22912000	FEED REGULATOR PIN				1
15	22912109	FEED REGULATOR PIN SPRING				1
16	22911804	FEED REGULATOR SCREW				1
17	22912505	FEED REVERSE ARM SCREW				1
18	40052100	LEVER_RETURN_SPRING				1
19	22966758	LEVER CRANK ASM.				1
20	40026194	HINGE PIN				1
21	40024308	FEED ROCK SHAFT CRANK L				1
22	SS6121210SP	SCREW 3/16-28 L=12				1
23	22940803	FEED BAR SHAFT				1
24	RC0150001KP	RETAINING RING 13.8				1
25	40021772	FEED BASE				1
26	SS4080620TP	SCREW 1/8-44 L=6				2
27	40021621	FEED DOG				1
28	22913701	FEED SPRING HOOK				1
29	RO092270200	RUBBER RING				1
30	22912901	FEED ROCKER SHAFT				1
31	NS6680410SP	NUT 9/32-28				1
32	22915151	FEED ARM COMPL.				2
33	SS6121210SP	SCREW 3/16-28 L=12		*		2
34	22915003	CONNECTING ROD				1
35	SD1000801SH	HINGE SCREW D=10 H=8				1
36	22915201	FEED DRIVING SHAFT				1
37	22904155	MAIN SHAFT THRUST COLLAR ASM.				1
38	SS8660610TP	SCREW 1/4-40 L=6		*		2
39	22913008	FEED ROCKER SHAFT BUSHING				1
40	B1414012000	NEEDLE BAR SLIDE BLOCK				1
41	SS7110740TP	SCREW 11/64-40 L=7				1
42	RC0150001KP	RETAINING RING 13.8				1
43	22940654	FEED ROCKER ASM.				1
44	SS7121410TP	SCREW 3/16-28 L=14		*		1
45	WP0480856SP	WASHER 4.8X8.4X0.8		*		1
46	40039114	DRIVING SHAFT CRANK ASM.				1
47	SS7111120TP	SCREW 11/64-40 L=10.5		*		1

FEED MECHANISM COMPONENTS

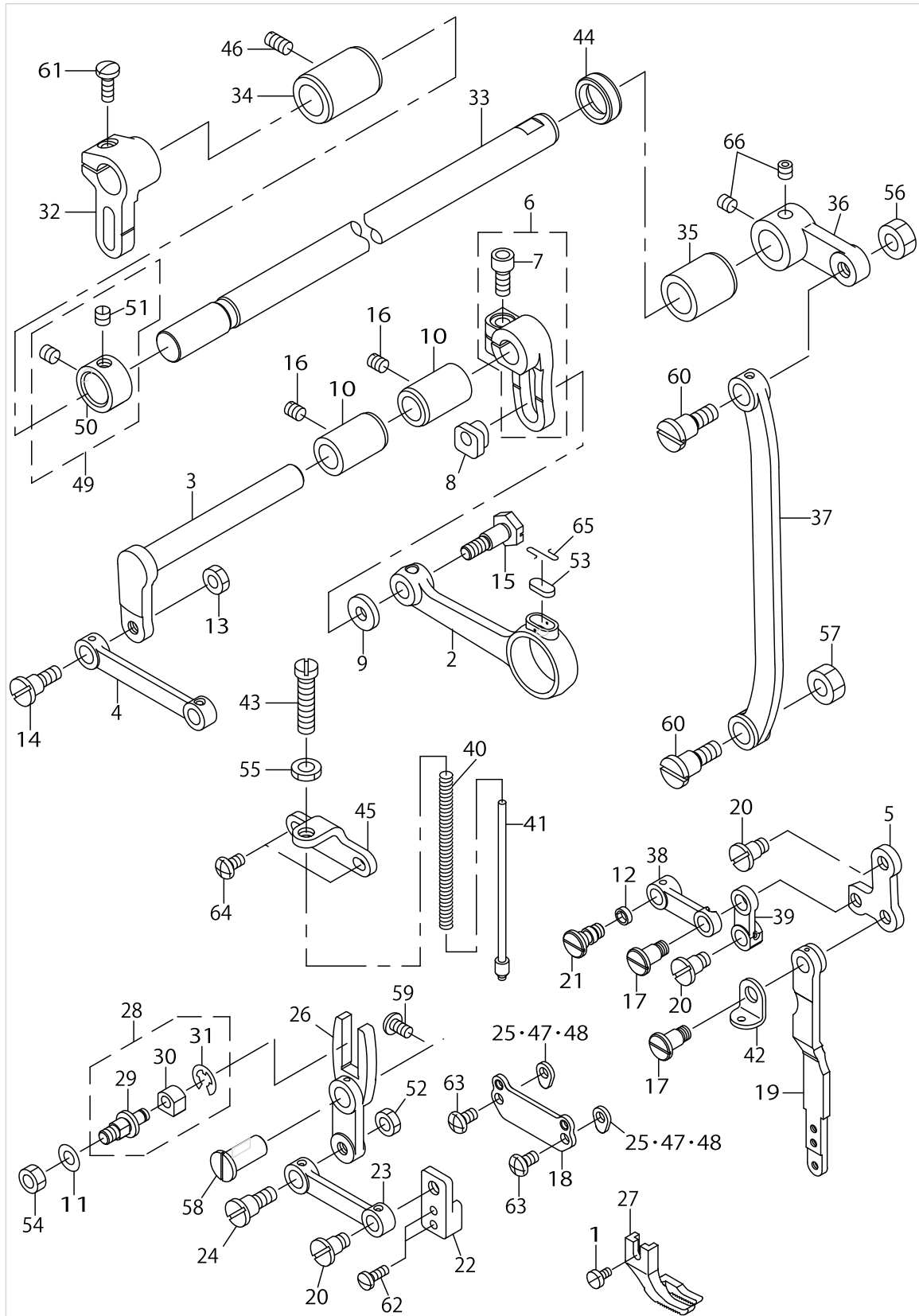


FEED MECHANISM COMPONENTS

No.	Parts No.	Parts name	Remarks	Level	Cons	Qty
48	22913008	FEED ROCKER SHAFT BUSHING				1
49	22904155	MAIN SHAFT THRUST COLLAR ASM.				1
50	SS8660610TP	SCREW 1/4-40 L=6		*		2
51	RO078190100	RUBBER RING				1
52	SS7120910TP	SCREW 3/16-28 L=9				1
53	40026520	FEED ROCKER SHAFT CRANK PIN				1
54	22972806	FEED ECCENTRIC CAM SETSCREW				1
55	SS8110410TP	SCREW 11/64-40 L= 3.5				1
56	22972806	FEED ECCENTRIC CAM SETSCREW				1
57	SS7620750SP	SCREW 3/16-32 L= 6.5				1
58	B1706555000	VERTICAL FEED SQUARE BLOCK				1
59	22913503	WASHER				1



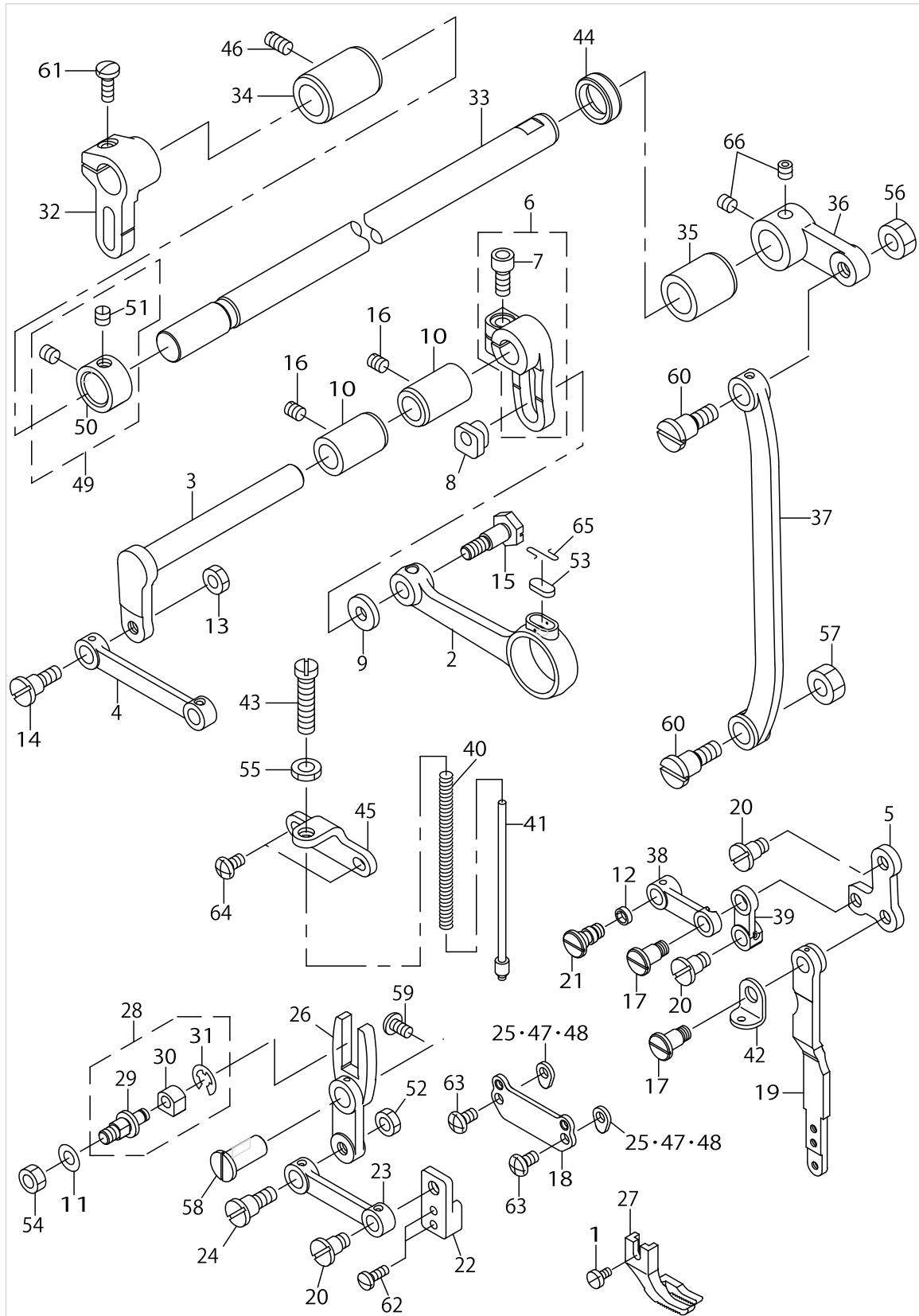
UPPER FEED MECHANISM COMPONENTS



UPPER FEED MECHANISM COMPONENTS

No.	Parts No.	Parts name	Remarks	Level	Cons	Qty
1	SS7090610SP	SCREW 9/64-40 L=6				1
2	40021576	CRANK CONNECTING ROD				1
3	40022003	UPPER FEED DRIVING SHAFT				1
4	40021578	CONNECTING LINK				1
5	40021623	L-SHAPED LINK				1
6	40021782	UPPER FEED SPRING ROD				1
7	SS6151412TP	SCREW 15/64-28 L=14		*		1
8	B3009141H0A	NUT				1
9	B3010141H00	WASHER				1
10	40021625	BUSHING				2
11	WP0650876SD	WASHER 6.5X13X0.8				1
12	40027810	FELT				0.02
13	NS6150310SP	NUT 15/64-28				1
14	SD0850751SP	HINGE SCREW D= 8.50 H= 7.5				1
15	40021579	HINGE SCREW				1
16	SS8150710TP	SCREW 15/64-28 L=7				2
17	B3016141H00	HINGE SCREW, B				2
18	40021581	WALKING BAR DRIVING LINK				1
19	40022000	L-SHAPED ROD				1
20	B3015141H00	HINGE SCREW				3
21	40027512	HINGE SCREW				1
22	40021582	CONNECTING LINK HOLDER				1
23	40021577	CONNECTING LINK				1
24	SD0850751SP	HINGE SCREW D= 8.50 H= 7.5				1
25	40029415	WASHER (C)	SELECTIVE PARTS			2
26	40021627	SLIDE FORK				1
27	40022772	PRESSURE FOOT				1
28	40021787	SLIDE BLOCK ASM.				1
29	40021788	SLIDE BLOCK PIN		*		1
30	B1414012000	NEEDLE BAR SLIDE BLOCK		*		1
31	RE0400000K0	E-RING 4		*		1
32	40021583	CONNECTING ARM				1
33	40021584	UPPER FEED DRIVING SHAFT				1
34	40021585	BUSHING, FRONT				1
35	40021938	BUSHING, REAR				1
36	40031287	DRIVING SHAFT ROD				1
37	40021587	DRIVING ROD				1
38	40021594	L-SHAPED LINK(A)				1
39	40021595	L-SHAPED LINK (B)				1
40	40021628	SPRING				1
41	40021588	SPRING POLE				1
42	40021629	RETAINING PLATE				1
43	40023033	ADJUSTING THUMB SCREW				1
44	22888002	OIL SEAL				1
45	40021590	SPRING BAR				1
46	SS8151150TP	SCREW 15/64-28 L=10.5				1
47	40029413	WASHER (A)	SELECTIVE PARTS			2

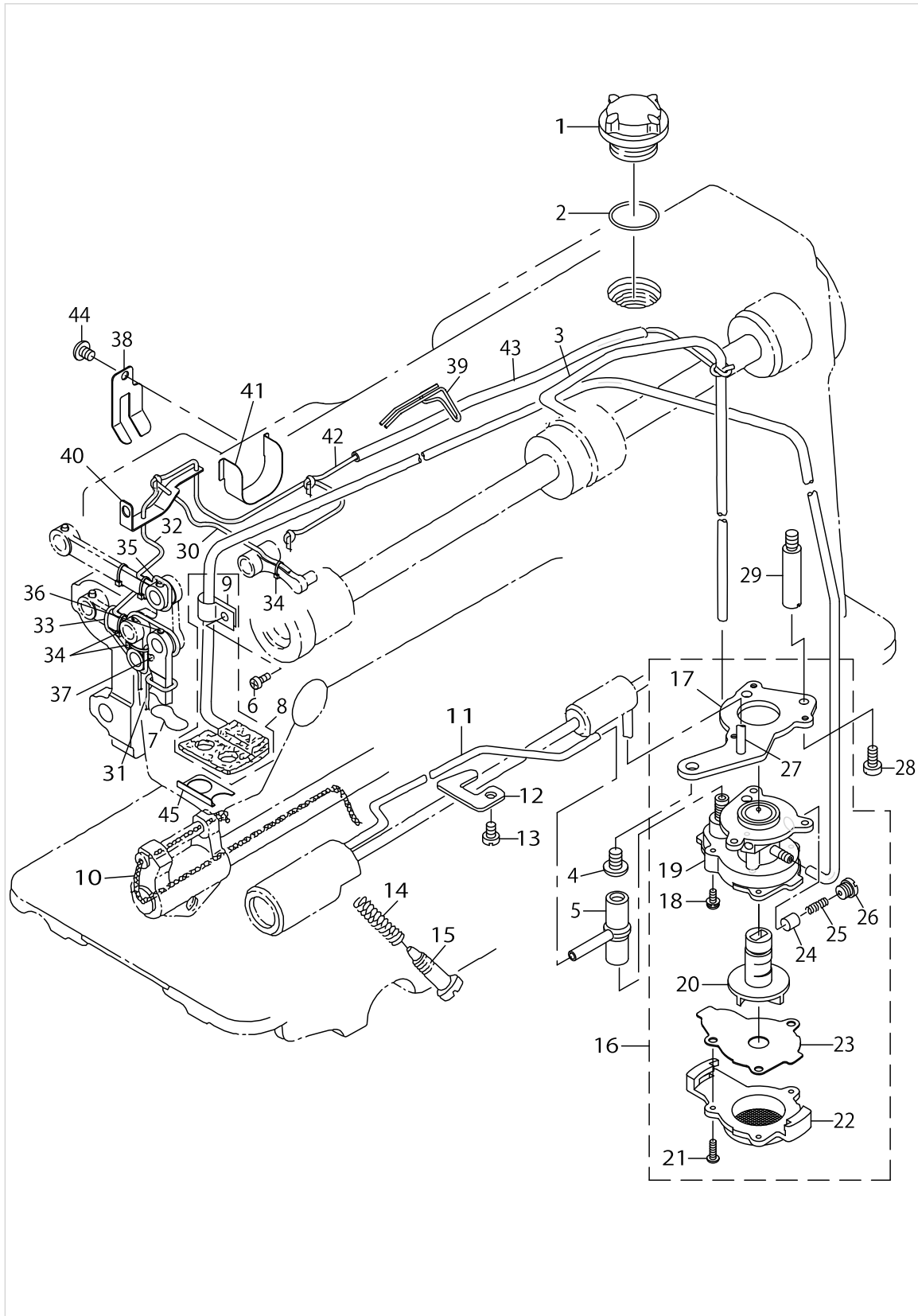
UPPER FEED MECHANISM COMPONENTS



UPPER FEED MECHANISM COMPONENTS

No.	Parts No.	Parts name	Remarks	Level	Cons	Qty
48	40029414	WASHER (B)	SELECTIVE PARTS			2
49	22904155	MAIN SHAFT THRUST COLLAR ASM.				1
50	22904106	MAIN SHAFT THRUST COLLAR		*		1
51	SS8660610TP	SCREW 1/4-40 L=6		*		2
52	NS6150310SP	NUT 15/64-28				1
53	40025574	FELT				1
54	NS6160520SP	NUT 1/4-24				1
55	NS6680320SP	NUT 9/32-28				1
56	NS6680410SP	NUT 9/32-28				1
57	NS6680320SP	NUT 9/32-28				1
58	40021630	HINGE PIN				1
59	SS4120915SP	SCREW 3/16-28 L=9				1
60	SD1020961SP	HINGE SCREW D=10.2 H=9.6				2
61	SS7121410TP	SCREW 3/16-28 L=14				1
62	SS7091110SP	SCREW 9/64-40 L=10.5				2
63	SS4120915SP	SCREW 3/16-28 L=9				2
64	SS4120915SP	SCREW 3/16-28 L=9				2
65	B1213012000	FELT RETAINER				1
66	SS8660612TP	SCREW 1/4-40 L=6				2

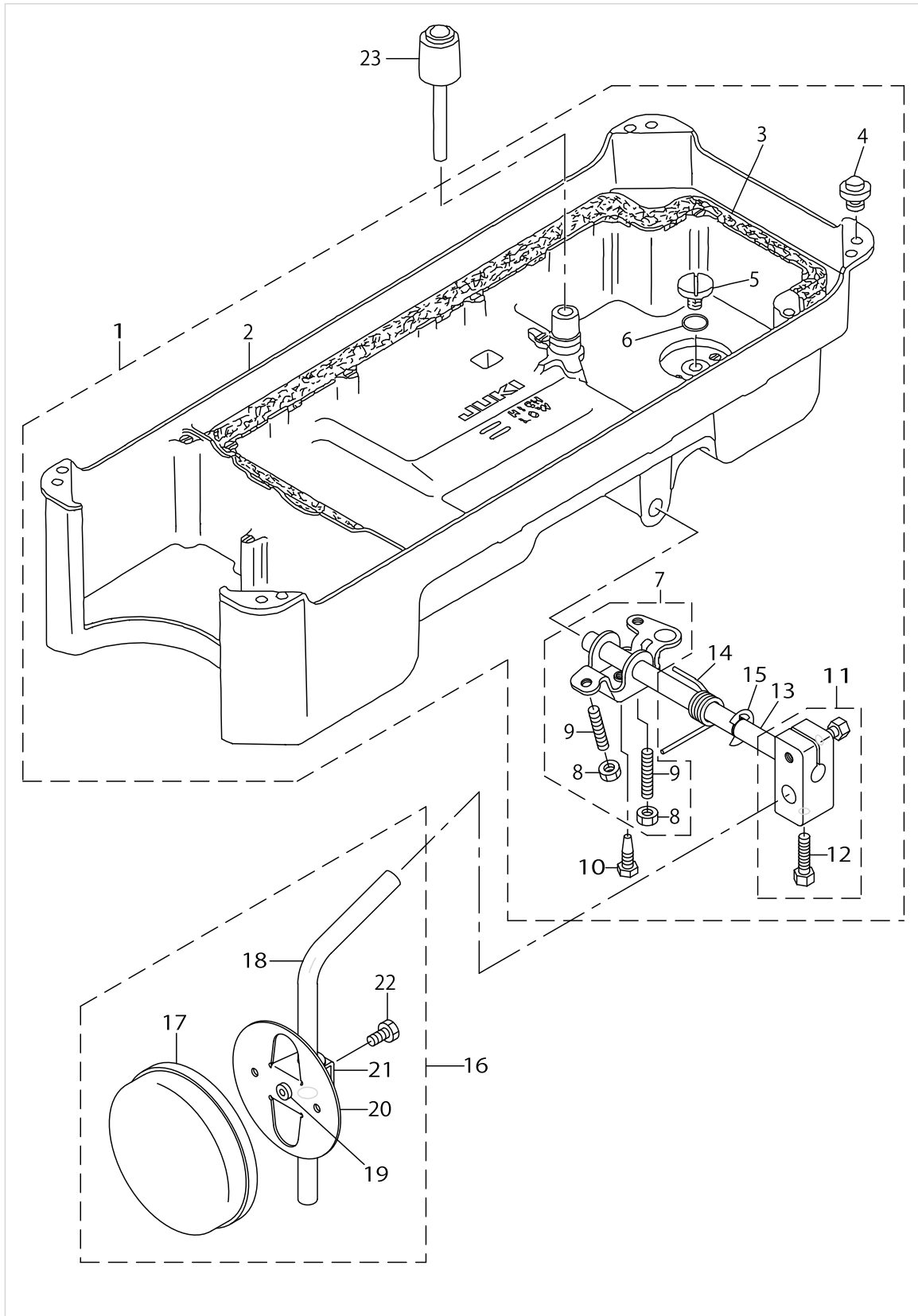
OIL LUBRICATION COMPONENTS



OIL LUBRICATION COMPONENTS

No.	Parts No.	Parts name	Remarks	Level	Cons	Qty
1	22924708	OIL SIGHT WINDOW				1
2	RO195240100	RUBBER RING				1
3	22924401	MAIN SHAFT OIL TUBE				1
4	SS4150915SP	SCREW 15/64-28 L=9				1
5	22924609	RUBBER JOINT				1
6	SS4120615SP	SCREW 3/16-28 L=6				1
7	22925101	OIL FELT PRESSER				1
8	22924153	RETURN PIPE ASM.				1
9	22924302	RETURN PIPE HOLDER		*		1
10	CQ252000000	OIL WICK				0.3
11	22924500	HOOK OIL TUBE				1
12	22924807	PIPE HOLDER, LOWER				1
13	SS4150915SP	SCREW 15/64-28 L=9				1
14	22924906	OIL REGULATOR SCREW SPRING				1
15	22925002	OIL REGULATOR SCREW				1
16	11404555	LUBRICATING OIL PUMP ASM.				1
17	22923312	PUMP BODY INSTALLING PLATE		*		1
18	SL4030851SF	SCREW M3 L=8		*		3
19	22923015	PUMP BODY		*		1
20	22923700	IMPELLER		*		1
21	SE4301041SR	SCREW D=3 L=10		*		3
22	22923205	PUMP BODY COVER		*		1
23	22923809	PUMP BODY SUPPORT PLATE		*		1
24	22923403	PLUNGER		*		1
25	22923601	PLUNGER SPRING		*		1
26	22923502	PLUNGER SCREW		*		1
27	11404605	HOOK DRIVING SHAFT OIL TUBE		*		1
28	SS6111010TP	SCREW 11/64-40 L= 9.5				1
29	22924005	PUMP BODY STRUT				1
30	CQ202000000	OIL WICK				0.1
31	CQ200000000	OIL WICK				0.1
32	CQ202000000	OIL WICK				0.75
33	CQ202000000	OIL WICK				0.1
34	EA9500B0000	CLIP CV-70S				5
35	CQ3000000F0	OIL FELT				0.04
36	CQ3000000F0	OIL FELT				0.04
37	CQ3000000F0	OIL FELT				0.04
38	40025328	OIL SHIELD (C)				1
39	40027938	HOLDER				1
40	40030403	OIL WICK SUPPORT				1
41	40030402	OIL SHIELD (D)				1
42	CQ252000000	OIL WICK				0.39
43	23630007	TUBE				0.19
44	SS4120615SP	SCREW 3/16-28 L=6				1
45	40021999	FACE PLATE OIL SHIELD (B)				1

OIL RESERVOIR COMPONENTS

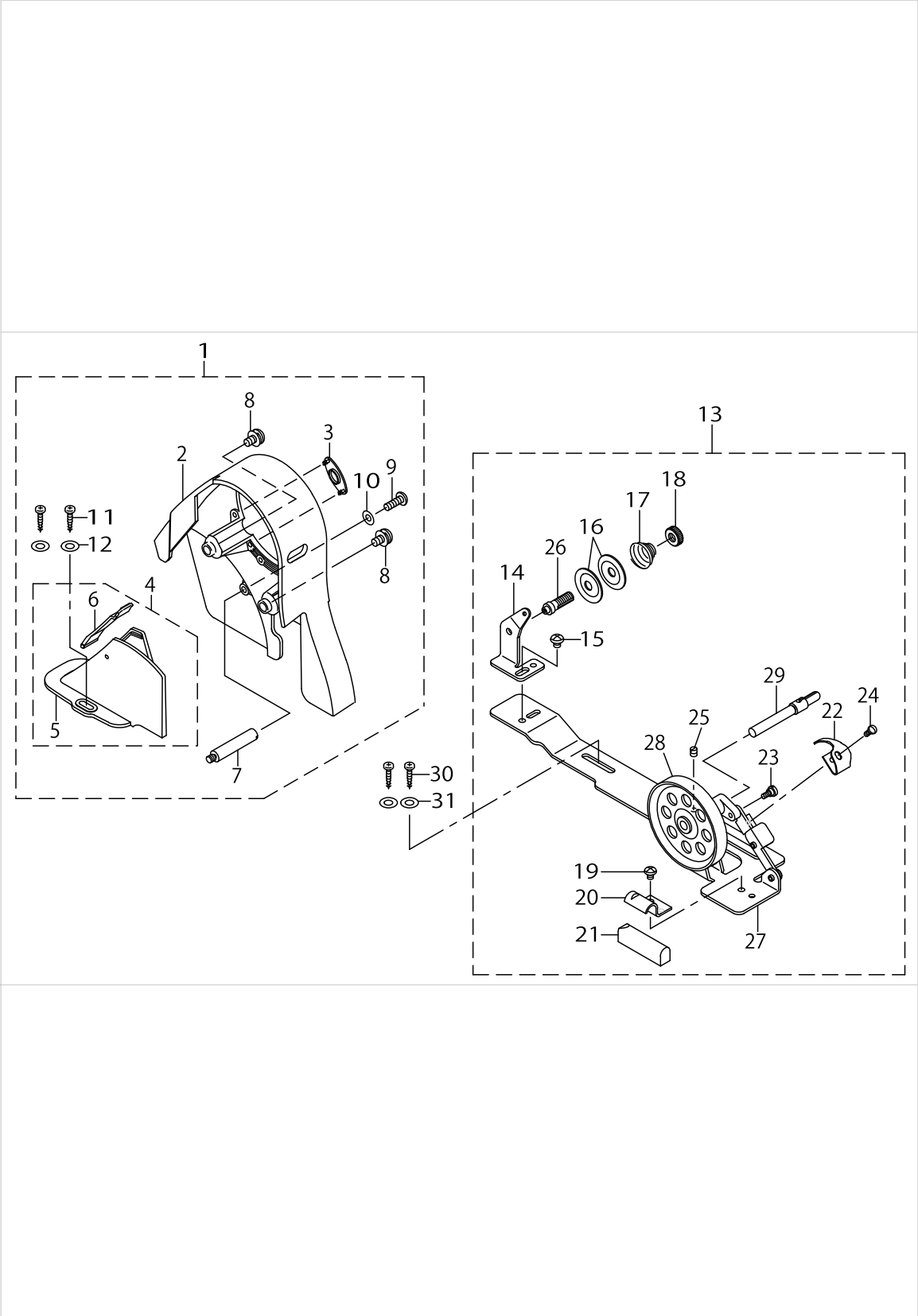


OIL RESERVOIR COMPONENTS

No.	Parts No.	Parts name	Remarks	Level	Cons	Qty
1	40029416	OIL RESERVOIR COMPL.				1
2	22931802	OIL RESERVOIR		*		1
3	22931901	OIL RESERVOIR GASKET		*		1
4	22932008	RUBBER CUSHION		*		4
5	SS6700710SH	SCREW 5/16-24 L=7		*		1
6	RO098240100	RUBBER RING		*		1
7	22932156	KNEE LIFTER ROTATION ARM ASM.		*		1
8	NM6060001SE	NUT M6		*		2
9	SM8063012TR	SCREW M6 L=30		*		2
10	SM9061853SR	SCREW M6 L=17.5		*		1
11	22932453	BRACKET ASM.		*		1
12	22934707	SCREW		*		2
13	22932305	KNEE PRESS CROSS SHAFT		*		1
14	22932206	SPRING		*		1
15	RE1000000K0	E-RING 10		*		1
16	22934251	KNEE PAD PLATE ASM.				1
17	22934509	KNEE PAD PLATE COVER		*		1
18	22934608	KNEE PAD UPRIGHT SHAFT		*		1
19	22934400	KNEE PAD PLATE RUBBER		*		1
20	22934202	KNEE PAD PLATE		*		1
21	22934301	KNEE PAD PLATE SUPPORT		*		1
22	SM9061203SE	SCREW M6 L=12		*		1
23	22931703	KNEE LIFTER PUSH ROD				1



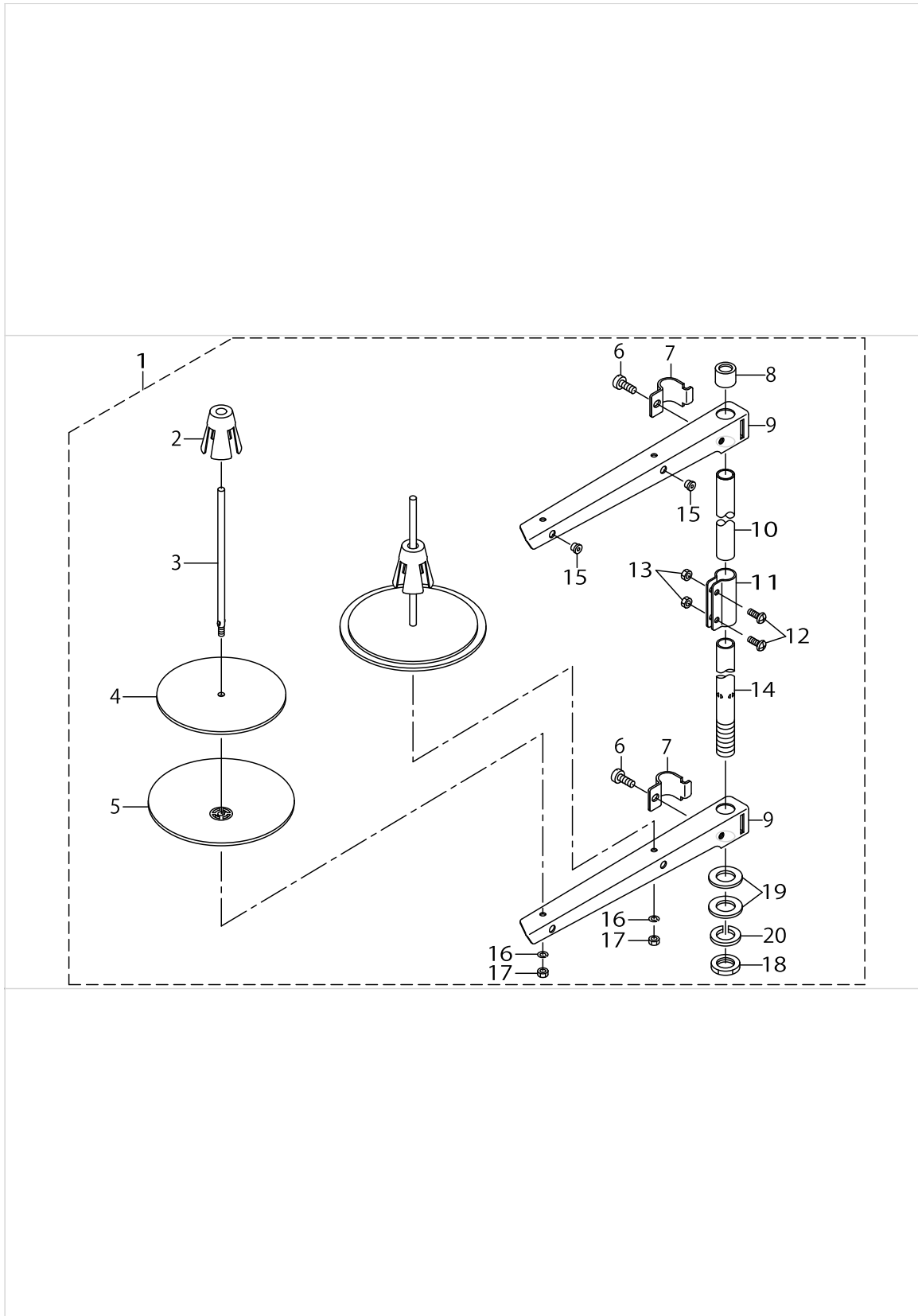
BELT COVER & BOBBIN COMPONENTS



BELT COVER & BOBBIN COMPONENTS

No.	Parts No.	Parts name	Remarks	Level	Cons	Qty
1	22933451	BELT COVER ASM.				1
2	22933402	BELT COVER A		*		1
3	22933501	BELT COVER A CAP		*		1
4	22933659	BELT COVER B COMPL.		*		1
5	22933600	BELT COVER B		*		1
6	22933758	BELT COVER B LID ASM.		*		1
7	22933907	BELT COVER STRUT		*		1
8	22934004	SET SCREW		*		2
9	SS4121415SP	SCREW 3/16-28 L=14		*		1
10	WP0501016SD	WASHER 5X10.5X1		*		1
11	SK3412000SC	WOOD SCREW D=4.1 L=20		*		2
12	WP0450826SC	WASHER 4.5X10X0.8		*		2
13	11415866	BOBBIN WINDER COMPL.				1
14	22928501	THREAD TENSION POST BASE		*		1
15	SS4110515SP	SCREW 11/64-40 L=5		*		1
16	22928907	THREAD TENSION DISK		*		2
17	22929004	THREAD TENSION SPRING		*		1
18	22928808	NUT		*		1
19	SS4110515SP	SCREW 11/64-40 L=5		*		1
20	22928402	CONTROL RUBBER HOLDING PLATE		*		1
21	22928303	CONTROL RUBBER		*		1
22	11415908	POSITIONING FINGER		*		1
23	SD0490261SP	HINGE SCREW D=4.9 H=2.6		*		1
24	SS7081310SP	SCREW 1/8-44 L=12.5		*		1
25	SS8110510SP	SCREW 11/64-40 L=5		*		1
26	22928709	THREAD TENSION POST		*		1
27	22927305	BOBBIN WINDER BASE		*		1
28	22927404	BOBBIN WINDER		*		1
29	22927602	BOBBIN WINDER SPINDLE		*		1
30	SK3412000SC	WOOD SCREW D=4.1 L=20				2
31	WP0450826SC	WASHER 4.5X10X0.8				2

# THREAD STAND COMPONENTS



THREAD STAND COMPONENTS

No.	Parts No.	Parts name	Remarks	Level	Cons	Qty
1	22930358	THREAD STAND ASM.				1
2	22931109	SPOOL RETAINER		*		2
3	22931000	SPOOL PIN		*		2
4	22930903	SPOOL REST CUSHION		*		2
5	22930804	SPOOL REST		*		2
6	SM6061610SC	SCREW M6 L=16		*		2
7	22930705	THREAD GUIDE ARM JOINT		*		2
8	22931406	SPOOL REST ROD RUBBER CAP		*		1
9	22930507	SPOOL REST ARM		*		2
10	22930408	SPOOL REST ROD, UPPER		*		1
11	22931307	SPOOL REST ROD JOINT		*		1
12	SM4051405SE	SCREW M5 L=14		*		2
13	NM6050001SE	NUT M5		*		2
14	22930309	SPOOL REST ROD, LOWER		*		1
15	22931208	THREAD GUIDE		*		2
16	WS0510002KN	SPRING WASHER 5.1X9.2X1.3		*		2
17	NM6050001SE	NUT M5		*		2
18	NM6160511SE	NUT M16X1.5		*		1
19	WP1612616SE	WASHER 16X30X2.6		*		2
20	WS1643202KR	SPRING WASHER 16.4X26.6X3.2		*		1

## HOW TO MAKE USE OF THIS PARTS LIST

1.As to "#01" and "#02" refer to the "Note" given at the bottom of the respective pages.

2.Codes on the "Qty" column

- Each numeral indicates the number of parts required.
- "0.1" and "2.5" indicate the length (in meters) of the respective parts.

3.Parentheses mean that the corresponding part is a subpart that constructs an assembly part.

4.Dotted lines on the Figures indicate assembly parts.

1. リストページの# 0 1、# 0 2の印は、ページ下の"注記"の説明を参照下さい。
2. 数量欄の数字は、個数を表し、0. 1、2. 5等の数値は、長さ（単位メートル）を表します。
3. 数量欄の（ ）は、組部品を構成している子部品であることを意味します。
4. イラストページの-----枠は、組構成であることを意味します。

# NUMERICAL INDEX OF PARTS

PART NO	PAGE	REF NO.	PART NO	PAGE	REF NO.	PART NO	PAGE	REF NO.
11001500	2	22	22912000	12	14	22924906	20	14
11002508	6	21	22912109	12	15	22925002	20	15
11403300	8	31	22912505	12	17	22925101	20	7
11404555	20	16	22912703	12	11	22927305	24	27
11404605	20	27	22912901	12	30	22927404	24	28
11404704	8	4	22913008	12	48	22927602	24	29
11415205	2	18	22913008	14	48	22928303	24	21
11415866	24	13	22913503	14	59	22928402	24	20
11415908	24	22	22913701	12	28	22928501	24	14
22888002	16	44	22915003	12	34	22928709	24	26
22901003	2	45	22915151	12	32	22928808	24	18
22901201	2	42	22915201	12	36	22928907	24	16
22901250	2	41	22916308	8	27	22929004	24	17
22901300	2	43	22916506	8	5	22930309	26	14
22901409	8	1	22917058	8	21	22930358	26	1
22901805	4	52	22917157	8	29	22930408	26	10
22902506	2	2	22920003	10	22	22930507	26	9
22902605	4	53	22920102	10	23	22930705	26	7
22903009	6	31	22920201	10	18	22930804	26	5
22903207	6	7	22920300	10	21	22930903	26	4
22903306	6	27	22920409	10	19	22931000	26	3
22903900	6	32	22920607	2	37	22931109	26	2
22904106	6	25	22920904	2	34	22931208	26	15
22904106	18	50	22921209	2	29	22931307	26	11
22904155	6	23	22921308	2	24	22931406	26	8
22904155	12	49	22921407	2	25	22931703	22	23
22904155	14	49	22921506	2	28	22931802	22	2
22904155	18	49	22921605	2	30	22931901	22	3
22905103	8	25	22921803	2	27	22932008	22	4
22905202	8	26	22923015	20	19	22932156	22	7
22906101	8	2	22923205	20	22	22932206	22	14
22907505	10	24	22923312	20	17	22932305	22	13
22907604	10	25	22923403	20	24	22932453	22	11
22907703	10	26	22923502	20	26	22933402	24	2
22907802	10	1	22923601	20	25	22933451	24	1
22908107	10	31	22923700	20	20	22933501	24	3
22908206	10	32	22923809	20	23	22933600	24	5
22908305	10	34	22924005	20	29	22933659	24	4
22908503	10	5	22924153	20	8	22933758	24	6
22908602	10	6	22924302	20	9	22933907	24	7
22908701	10	7	22924401	20	3	22934004	24	8
22908800	10	14	22924500	20	11	22934202	22	20
22908909	10	12	22924609	20	5	22934251	22	16
22909006	10	15	22924708	20	1	22934301	22	21
22911804	12	16	22924807	20	12	22934400	22	19

NUMERICAL INDEX OF PARTS

PART NO	PAGE	REF NO.	PART NO	PAGE	REF NO.	PART NO	PAGE	REF NO.
22934509	22	17	40021622	8	32	40026457	6	8
22934608	22	18	40021623	16	5	40026519	12	6
22934707	22	12	40021625	16	10	40026520	14	53
22940654	12	43	40021627	16	26	40027512	16	21
22940803	12	23	40021628	16	40	40027810	16	12
22945307	2	31	40021629	16	42	40027938	20	39
22958300	2	15	40021630	18	58	40029413	16	47
22962005	2	26	40021635	6	18	40029414	18	48
22962054	2	23	40021770	6	13	40029415	16	25
22966758	12	19	40021772	12	25	40029416	22	1
22972806	14	56	40021773	6	4	40030402	20	41
23626104	2	21	40021774	6	10	40030403	20	40
23630007	20	43	40021775	6	2	40031286	10	39
40017805	10	37	40021782	16	6	40031287	16	36
40021567	2	9	40021787	16	28	40032086	8	12
40021568	10	28	40021788	16	29	40032087	8	13
40021570	10	4	40021790	2	4	40032088	8	15
40021571	12	13	40021791	10	20	40032089	8	17
40021574	6	5	40021907	2	12	40032090	8	19
40021575	6	12	40021938	16	35	40032702	8	24
40021576	16	2	40021999	20	45	40038958	12	8
40021577	16	23	40022000	16	19	40038959	12	5
40021578	16	4	40022003	16	3	40038991	12	7
40021579	16	15	40022646	2	1	40039114	12	46
40021581	16	18	40022647	2	8	40048594	6	20
40021582	16	22	40022772	16	27	40052100	12	18
40021583	16	32	40023030	8	3	B1213012000	18	65
40021584	16	33	40023031	6	33	B1215552000	6	26
40021585	16	34	40023033	16	43	B1226490000	6	28
40021587	16	37	40023223	8	7	B1414012000	12	40
40021588	16	41	40023246	10	36	B1414012000	16	30
40021590	16	45	40023295	2	17	B1414555000	8	6
40021592	2	13	40024117	12	4	B1510155000	10	16
40021593	2	14	40024118	6	19	B1521555000	10	2
40021594	16	38	40024119	12	3	B1706555000	14	58
40021595	16	39	40024122	10	29	B3009141H0A	16	8
40021597	10	38	40024124	8	10	B3010141H00	16	9
40021604	8	8	40024130	12	1	B3015141H00	16	20
40021609	8	36	40024132	10	30	B3016141H00	16	17
40021610	8	34	40024308	12	21	CM300200001	4	48
40021612	8	23	40025328	20	38	CM301200001	4	51
40021613	8	35	40025574	18	53	CM600100101	4	58
40021615	2	35	40026194	12	20	CQ200000000	20	31
40021617	10	27	40026195	12	2	CQ202000000	20	33
40021621	12	27	40026454	6	29	CQ252000000	20	42

NUMERICAL INDEX OF PARTS

PART NO	PAGE	REF NO.	PART NO	PAGE	REF NO.	PART NO	PAGE	REF NO.
CQ300000F0	20	37	SS4112215SP	4	55	SS8660610TP	12	50
EA9500B0000	20	34	SS4120615SP	2	20	SS8660610TP	14	50
MDP170B2100	8	11	SS4120615SP	20	44	SS8660610TP	18	51
NM6050001SE	26	17	SS4120915SP	2	40	SS8660612TP	18	66
NM6060001SE	22	8	SS4120915SP	8	28	SS8660810TP	6	6
NM6160511SE	26	18	SS4120915SP	18	64	SS8660810TP	8	20
NS6150310SP	16	52	SS4121015SP	2	47	SS8661030SP	6	35
NS6150310SP	18	52	SS4121415SP	24	9	SS8681650TP	6	14
NS6160520SP	18	54	SS4150915SP	20	13	TA0850604R0	2	5
NS6680320SP	18	57	SS4701415SD	4	49	TA0950806R0	4	56
NS6680410SP	12	31	SS6060210SP	2	44	TA1250406R0	2	39
NS6680410SP	18	56	SS6080320SP	2	3	TA1250705R0	2	6
RC0150001KP	12	42	SS6090910SP	10	11	TA2000502R0	2	10
RC1850001KP	6	22	SS6110420TP	8	30	TA2050406R0	2	57
RE0400000K0	16	31	SS6110610TP	2	38	TA2050406R0	4	57
RE0500000K0	10	35	SS6111010TP	20	28	TA2101002R0	2	11
RE1000000K0	22	15	SS6121210SP	12	33	TA2351004R0	2	16
RO029180100	6	3	SS6121860SP	12	12	WP0450826SC	24	31
RO037180100	10	3	SS6151412TP	16	7	WP0480856SP	12	45
RO044240100	6	16	SS6700710SH	22	5	WP0501016SD	24	10
RO078190100	14	51	SS7080510TP	8	9	WP0650876SD	16	11
RO092270200	12	29	SS7081310SP	24	24	WP1612616SE	26	19
RO098240100	22	6	SS7090610SP	16	1	WS0510002KN	26	16
RO195240100	20	2	SS7091110SP	18	62	WS1643202KR	26	20
SD0490261SP	24	23	SS7091110TP	10	8			
SD0720331SP	10	13	SS7110540SP	4	50			
SD0850751SP	16	24	SS7110740TP	12	41			
SD1000801SH	12	35	SS7111120TP	12	47			
SD1020961SP	18	60	SS7120910TP	14	52			
SE4301041SR	20	21	SS7121410TP	12	44			
SK3412000SC	24	30	SS7121410TP	18	61			
SL4030851SF	20	18	SS7620750SP	14	57			
SM4051055SP	6	9	SS7681650TP	6	17			
SM4051405SE	26	12	SS8090670SP	2	32			
SM6061610SC	26	6	SS8110410TP	8	22			
SM8061010TP	12	10	SS8110410TP	14	55			
SM8061050TP	12	9	SS8110510SP	24	25			
SM8063012TR	22	9	SS8150710TP	2	33			
SM9061203SE	22	22	SS8150710TP	16	16			
SM9061853SR	22	10	SS8151150TP	6	1			
SS2110915SP	4	54	SS8151150TP	16	46			
SS2110920TP	2	36	SS8151550SP	6	30			
SS4080620TP	12	26	SS8660410SP	6	15			
SS4110515SP	24	19	SS8660610TP	6	34			
SS4110915TP	8	33	SS8660610TP	10	10			