

MODEL : MO-6X04S/Z195,6X04D/Z195

List No : 1434-00

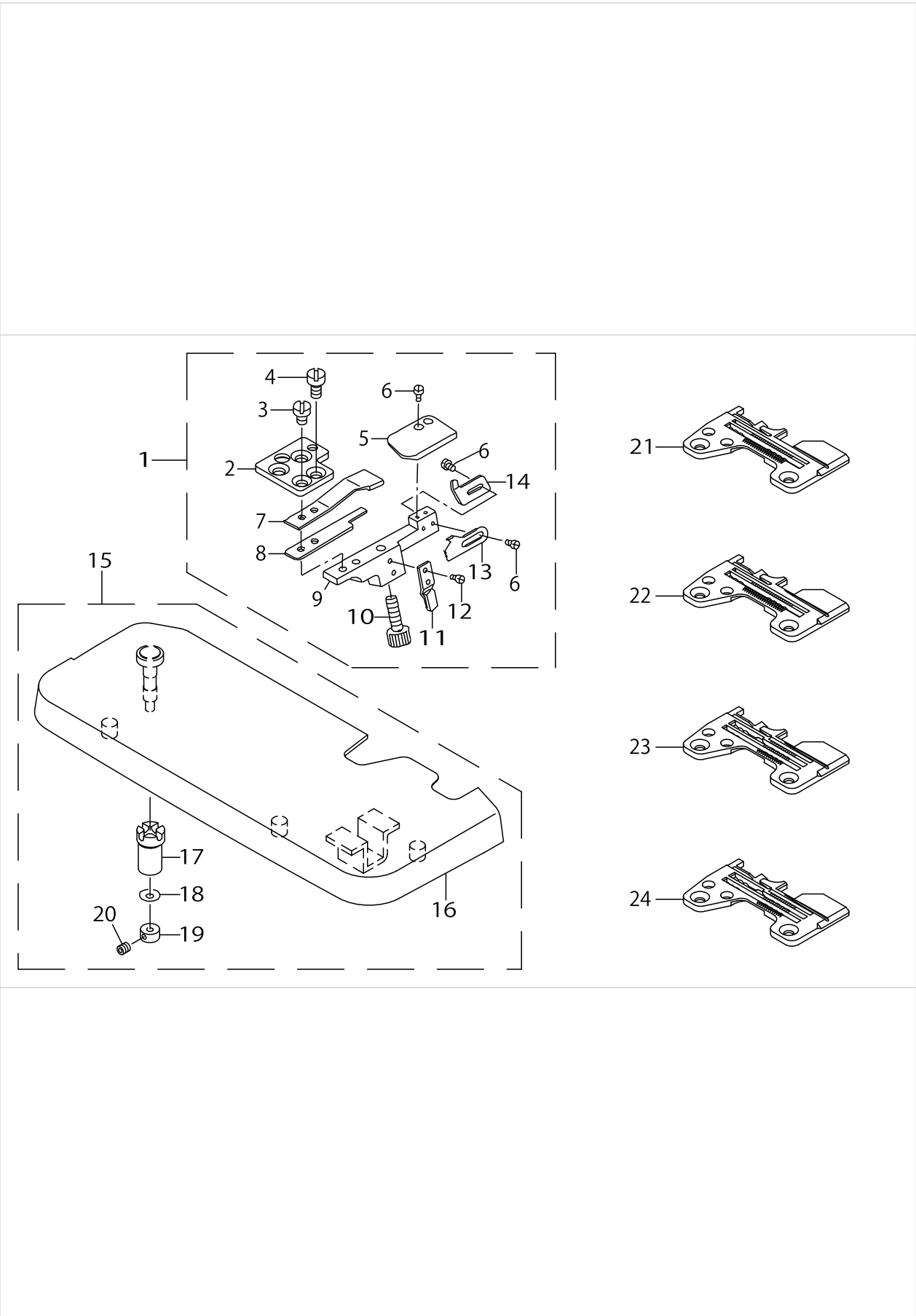
PARTS LIST

Published:09/10/2017

CONTENTS

| | |
|--|---|
| COMPONENTS | 1 |
| HOW TO MAKE USE OF THIS PARTS LIST | 3 |

COMPONENTS



COMPONENTS

| No. | Parts No. | Parts name | Remarks | Level | Cons | Qty |
|-----|--------------|--------------------------------|-------------|-------|------|-----|
| 1 | 40033882 | CHAIN-OFF THREAD ROLLING-IN DE | | | | 1 |
| 2 | 40033883 | THROAT PLATE BASE A | | * | | 1 |
| 3 | SS6110480SP | SCREW 11/64-40 L=4.3 | | * | | 1 |
| 4 | SS6110610TP | SCREW 11/64-40 L=6 | | * | | 1 |
| 5 | MAZ07205000A | REAR PRESSER PLATE | | * | | 1 |
| 6 | SS7060310SP | SCREW 3/32-56 L=3 | | * | | 6 |
| 7 | MAZ07203000A | REAR PRESSER SPRING A | | * | | 1 |
| 8 | MAZ07204000 | REAR PRESSER SPRING B | | * | | 1 |
| 9 | MAZ07201000A | HOLDER BASE | | * | | 1 |
| 10 | MAZ07207000 | REAR PRESSER SPRING REGULATOR | | * | | 1 |
| 11 | MAZ07208000 | SPRING REGULATOR STOPPER | | * | | 1 |
| 12 | SS6060210SP | SCREW 3/32-56 L= 1.9 | | * | | 2 |
| 13 | MAZ07206000 | KNIFE | | * | | 1 |
| 14 | MAZ07209000 | CHAIN-OFF THREAD GUIDE | | * | | 1 |
| 15 | 40033884 | CLOTH BASE ASM | | | | 1 |
| 16 | 40033885 | CLOTH BASE ASM | | * | | 1 |
| 17 | 13101902 | CLOTH BASE ECCENTRIC BUSHING | | * | | 1 |
| 18 | 13172903 | CLOTH BASE HINGE SHAFT COLLAR | | * | | 1 |
| 19 | WZ0420350KP | DISC SPRING | | * | | 1 |
| 20 | SM8040302TP | SETSCREW | | * | | 1 |
| 21 | R4200J2DD00 | THROAT PLATE | FOR OD4-300 | | | 1 |
| 22 | R4200J2ED00 | THROAT PLATE | FOR OE4-300 | | | 1 |
| 23 | R4300J2DE00 | THROAT PLATE | FOR OD6-300 | | | 1 |
| 24 | R4300J2EE00 | THROAT PLATE | FOR OE6-300 | | | 1 |

HOW TO MAKE USE OF THIS PARTS LIST

1.As to "#01" and "#02" refer to the "Note" given at the bottom of the respective pages.

2.Codes on the "Qty" column

- Each numeral indicates the number of parts required.
- "0.1" and "2.5" indicate the length (in meters) of the respective parts.

3.Parentheses mean that the corresponding part is a subpart that constructs an assembly part.

4.Dotted lines on the Figures indicate assembly parts.

1. リストページの# 0 1、# 0 2の印は、ページ下の"注記"の説明を参照下さい。
2. 数量欄の数字は、個数を表し、0. 1、2. 5等の数値は、長さ（単位メートル）を表します。
3. 数量欄の（ ）は、組部品を構成している子部品であることを意味します。
4. イラストページの-----枠は、組構成であることを意味します。

NUMERICAL INDEX OF PARTS

| PART NO | PAGE | REF NO. |
|--------------|------|---------|
| 13101902 | 2 | 17 |
| 13172903 | 2 | 18 |
| 40033882 | 2 | 1 |
| 40033883 | 2 | 2 |
| 40033884 | 2 | 15 |
| 40033885 | 2 | 16 |
| MAZ07201000A | 2 | 9 |
| MAZ07203000A | 2 | 7 |
| MAZ07204000 | 2 | 8 |
| MAZ07205000A | 2 | 5 |
| MAZ07206000 | 2 | 13 |
| MAZ07207000 | 2 | 10 |
| MAZ07208000 | 2 | 11 |
| MAZ07209000 | 2 | 14 |
| R4200J2DD00 | 2 | 21 |
| R4200J2ED00 | 2 | 22 |
| R4300J2DE00 | 2 | 23 |
| R4300J2EE00 | 2 | 24 |
| SM8040302TP | 2 | 20 |
| SS6060210SP | 2 | 12 |
| SS6110480SP | 2 | 3 |
| SS6110610TP | 2 | 4 |
| SS7060310SP | 2 | 6 |
| WZ0420350KP | 2 | 19 |