

MODEL : MO-6116D SUBCLASSES

List No : 1356-00

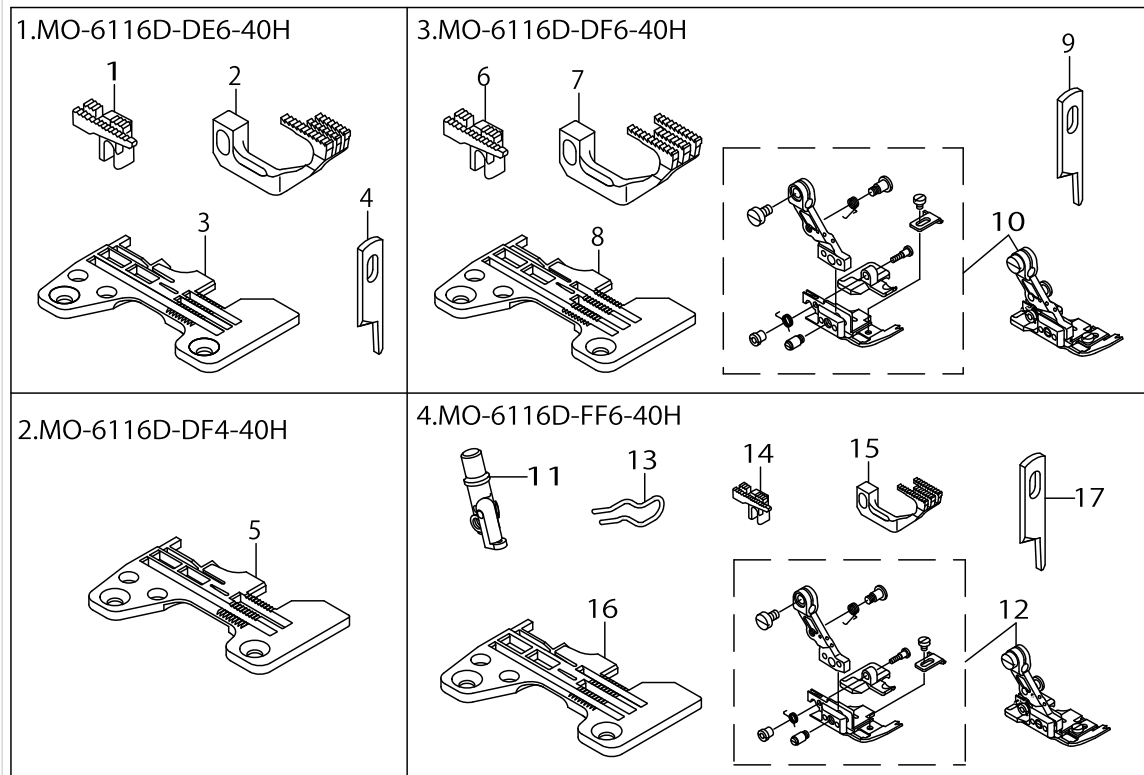
PARTS LIST

Published:09/10/2017

CONTENTS

MO-6116D SUBCLASSES (1).....	1
MO-6116D SUBCLASSES (2).....	3
MO-6116D SUBCLASSES (3).....	5
MO-6116D SUBCLASSES (4).....	7
HOW TO MAKE USE OF THIS PARTS LIST	9

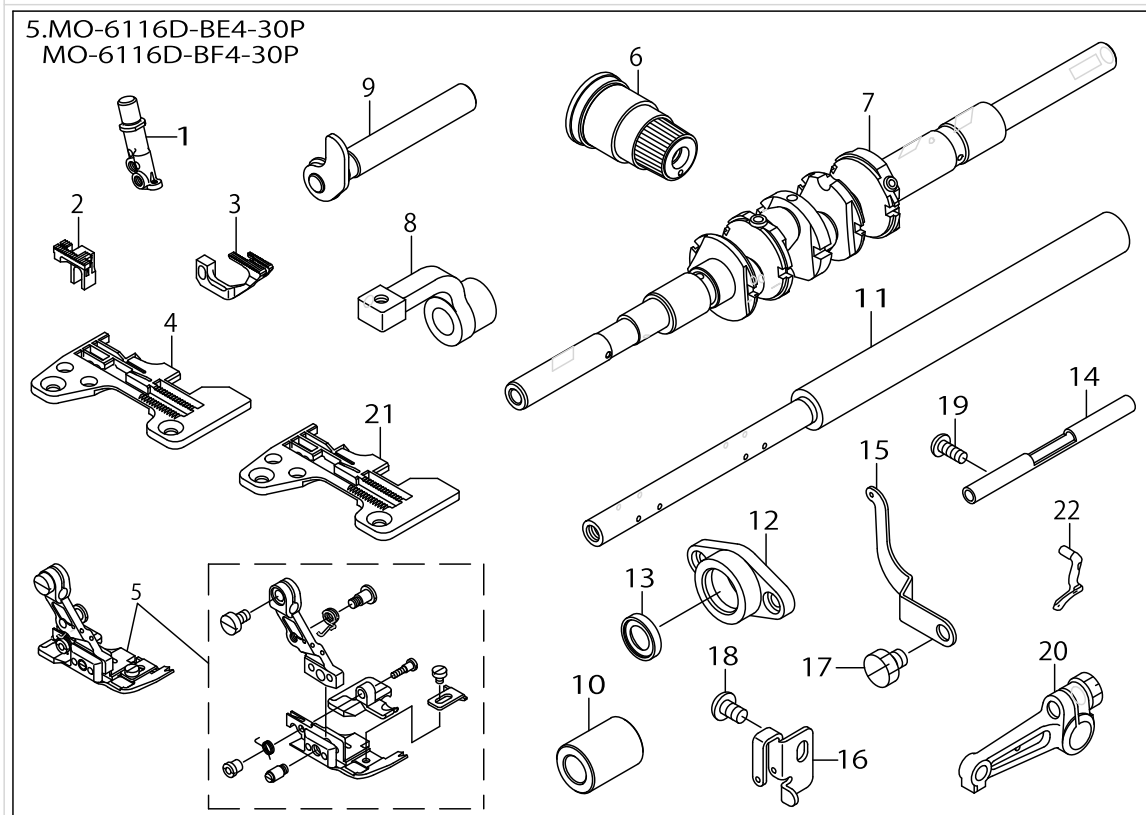
MO-6116D SUBCLASSES (1)



MO-6116D SUBCLASSES (1)

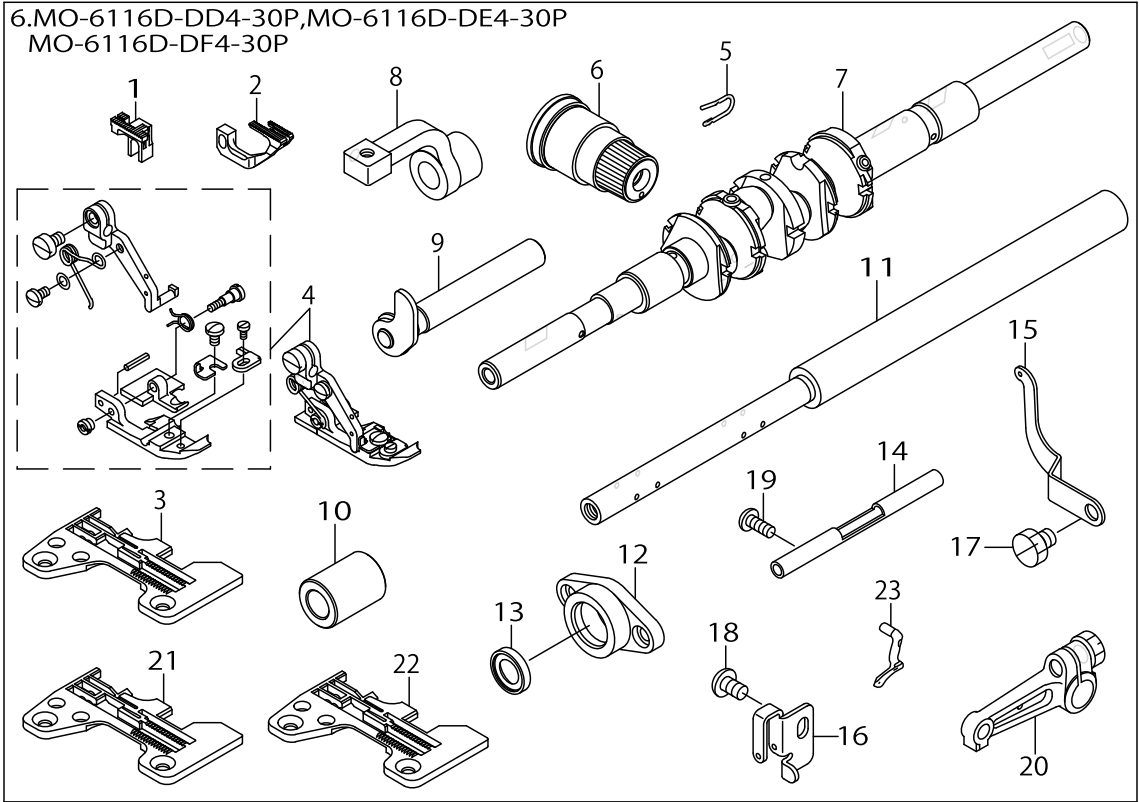
No.	Parts No.	Parts name	Remarks	Level	Cons	Qty
1	11882909	MAIN FEED DOG				1
2	12173209	DIFFERENTIAL FEED DOG				1
3	R4608J6ED00	THROAT PLATE				1
4	13150503	KNIFE				1
5	R4508J6FD00	THROAT PLATE				1
6	11987708	MAIN FEED DOG				1
7	12173308	DIFFERENTIAL FEED DOG				1
8	R4608J6FD00	THROAT PLATE				1
9	13150503	KNIFE				1
10	12154159	PRESSER FOOT ASM.				1
11	12257507	NEEDLE CLAMP, CHAIN LOOPER				1
12	12154258	PRESSER FOOT ASM.				1
13	12168209	FINGER GUARD				1
14	11884004	MAIN FEED DOG				1
15	12173308	DIFFERENTIAL FEED DOG				1
16	R4612J6FD00	THROAT PLATE				1
17	13150503	KNIFE				1

MO-6116D SUBCLASSES (2)



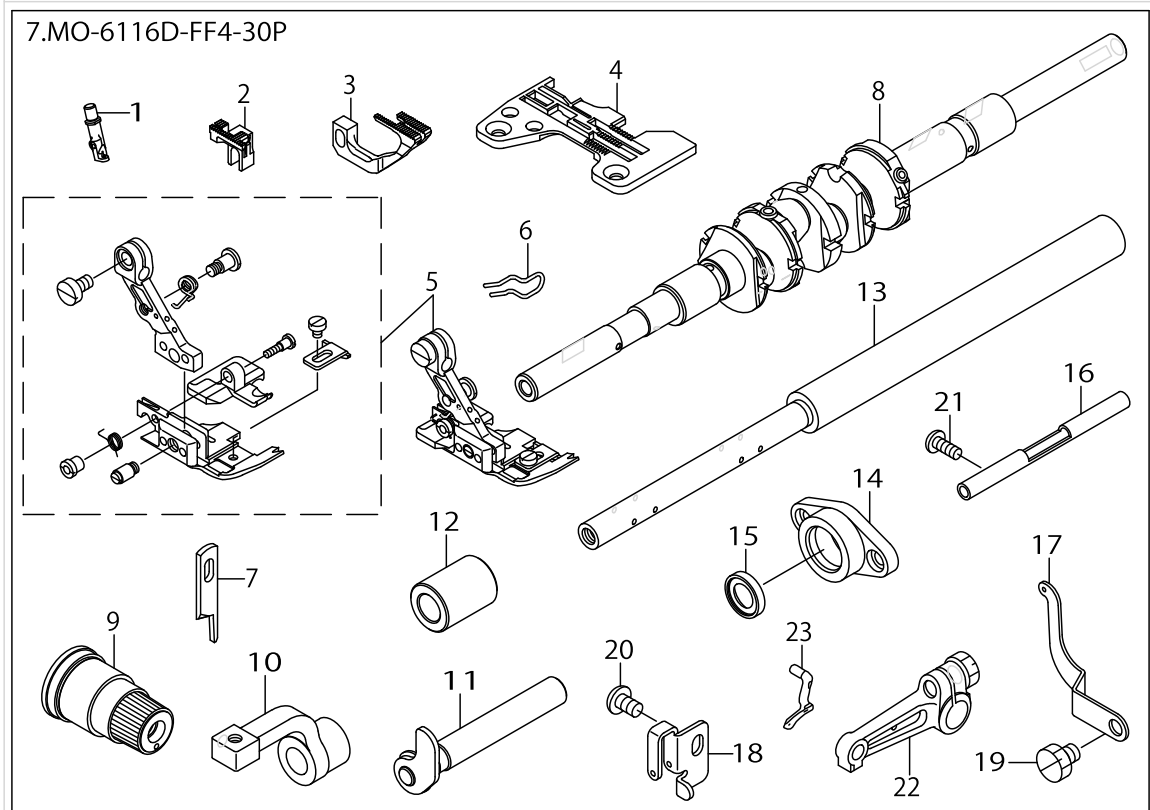
MO-6116D SUBCLASSES (2)

No.	Parts No.	Parts name	Remarks	Level	Cons	Qty
1	12150009	CHAIN LOOPER NEEDLE CLAMP				1
2	12171302	MAIN FEED DOG				1
3	12174603	SUB-FEED DOG				1
4	R4505J6ED0A	THROAT PLATE	FOR MO-6116D-BE4-30P			1
5	12153953	PRESSER FOOT ASM.				1
6	13138359	THREAD TENSION SPRING JUNCTION				1
7	40004537	MAIN SHAFT (30P) ASM.				1
8	12115515	PRESSER SHAFT ARM				1
9	12115655	PRESSER SHAFT ASM.				1
10	12115812	PRESSER SHAFT METAL				1
11	40004609	FEED SHAFT 30P				1
12	40004612	FEED SHAFT THRUST COVER (30P)				1
13	GAK33025000	OIL SEAL				1
14	12121703	LOWER THREAD COPPER PIP				1
15	40004732	LOWER THREAD TAKE-UP LEVER				1
16	12121901	THREAD TAKE-UP LEVER GUIDE				1
17	SS9150730SP	SCREW 15/64-28 L=7				1
18	SM4050855SP	SCREW				1
19	SM4041055SP	SCREW				1
20	13131057	UPPER LOOPER ARM A ASM.				1
21	R4505J6FD0A	THROAT PLATE	FOR MO-6116D-BF4-30P			1
22	11888104	UPPER LOOPER				1



MO-6116D SUBCLASSES (3)

No.	Parts No.	Parts name	Remarks	Level	Cons	Qty
1	12171302	MAIN FEED DOG				1
2	12174306	SUB-FEED DOG				1
3	R4508J6DD0A	THROAT PLATE	FOR MO-6116D-DD4-30P			1
4	11879954	PRESSER FOOT ASM.				1
5	11894904	FINGER GUARD				1
6	13138359	THREAD TENSION SPRING JUNCTION				1
7	40004537	MAIN SHAFT (30P) ASM.				1
8	12115515	PRESSER SHAFT ARM				1
9	12115655	PRESSER SHAFT ASM.				1
10	12115812	PRESSER SHAFT METAL				1
11	40004609	FEED SHAFT 30P				1
12	40004612	FEED SHAFT THRUST COVER (30P)				1
13	GAK33025000	OIL SEAL				1
14	12121703	LOWER THREAD COPPER PIP				1
15	40004732	LOWER THREAD TAKE-UP LEVER				1
16	12121901	THREAD TAKE-UP LEVER GUIDE				1
17	SS9150730SP	SCREW 15/64-28 L=7				1
18	SM4050855SP	SCREW				1
19	SM4041055SP	SCREW				1
20	13131057	UPPER LOOPER ARM A ASM.				1
21	R4508J6ED0A	THROAT PLATE	FOR MO-6116D-DE4-30P			1
22	R4508J6FD0A	THROAT PLATE	FOR MO-6116D-DF4-30P			1
23	11888104	UPPER LOOPER				1



MO-6116D SUBCLASSES (4)

No.	Parts No.	Parts name	Remarks	Level	Cons	Qty
1	12150306	NEEDLE CLAMP, CHAIN LOOPER				1
2	12171609	MAIN FEED DOG				1
3	12174702	SUB-FEED DOG				1
4	R4512J6FD0A	THROAT PLATE				1
5	12154258	PRESSER FOOT ASM.				1
6	12168209	FINGER GUARD				1
7	13150503	KNIFE				1
8	40004537	MAIN SHAFT (30P) ASM.				1
9	13138359	THREAD TENSION SPRING JUNCTION				1
10	12115515	PRESSER SHAFT ARM				1
11	12115655	PRESSER SHAFT ASM.				1
12	12115812	PRESSER SHAFT METAL				1
13	40004609	FEED SHAFT 30P				1
14	40004612	FEED SHAFT THRUST COVER (30P)				1
15	GAK33025000	LOWER THREAD COPPER PIP				1
16	12121703	LOWER THREAD COPPER PIP				1
17	40004732	LOWER THREAD TAKE-UP LEVER				1
18	12121901	THREAD TAKE-UP LEVER GUIDE				1
19	SS9150730SP	SCREW 15/64-28 L=7				1
20	SM4050855SP	SCREW				1
21	SM4041055SP	SCREW				1
22	13131057	UPPER LOOPER ARM A ASM.				1
23	11888104	UPPER LOOPER				1

HOW TO MAKE USE OF THIS PARTS LIST

1.As to "#01" and "#02" refer to the "Note" given at the bottom of the respective pages.

2.Codes on the "Qty" column

- Each numeral indicates the number of parts required.
- "0.1" and "2.5" indicate the length (in meters) of the respective parts.

3.Parentheses mean that the corresponding part is a subpart that constructs an assembly part.

4.Dotted lines on the Figures indicate assembly parts.

1. リストページの# 0 1、# 0 2の印は、ページ下の"注記"の説明を参照下さい。
2. 数量欄の数字は、個数を表し、0. 1、2. 5等の数値は、長さ（単位メートル）を表します。
3. 数量欄の（ ）は、組部品を構成している子部品であることを意味します。
4. イラストページの-----枠は、組構成であることを意味します。

NUMERICAL INDEX OF PARTS

PART NO	PAGE	REF NO.	PART NO	PAGE	REF NO.
11879954	6	4	13138359	8	9
11882909	2	1	13150503	2	17
11884004	2	14	13150503	8	7
11888104	4	22	40004537	4	7
11888104	6	23	40004537	6	7
11888104	8	23	40004537	8	8
11894904	6	5	40004609	4	11
11987708	2	6	40004609	6	11
12115515	4	8	40004609	8	13
12115515	6	8	40004612	4	12
12115515	8	10	40004612	6	12
12115655	4	9	40004612	8	14
12115655	6	9	40004732	4	15
12115655	8	11	40004732	6	15
12115812	4	10	40004732	8	17
12115812	6	10	GAK33025000	4	13
12115812	8	12	GAK33025000	6	13
12121703	4	14	GAK33025000	8	15
12121703	6	14	R4505J6ED0A	4	4
12121703	8	16	R4505J6FD0A	4	21
12121901	4	16	R4508J6DD0A	6	3
12121901	6	16	R4508J6ED0A	6	21
12121901	8	18	R4508J6FD00	2	5
12150009	4	1	R4508J6FD0A	6	22
12150306	8	1	R4512J6FD0A	8	4
12153953	4	5	R4608J6ED00	2	3
12154159	2	10	R4608J6FD00	2	8
12154258	2	12	R4612J6FD00	2	16
12154258	8	5	SM4041055SP	4	19
12168209	2	13	SM4041055SP	6	19
12168209	8	6	SM4041055SP	8	21
12171302	4	2	SM4050855SP	4	18
12171302	6	1	SM4050855SP	6	18
12171609	8	2	SM4050855SP	8	20
12173209	2	2	SS9150730SP	4	17
12173308	2	15	SS9150730SP	6	17
12174306	6	2	SS9150730SP	8	19
12174603	4	3			
12174702	8	3			
12257507	2	11			
13131057	4	20			
13131057	6	20			
13131057	8	22			
13138359	4	6			
13138359	6	6			