

MODEL : MO-6916R SUBCLASSES

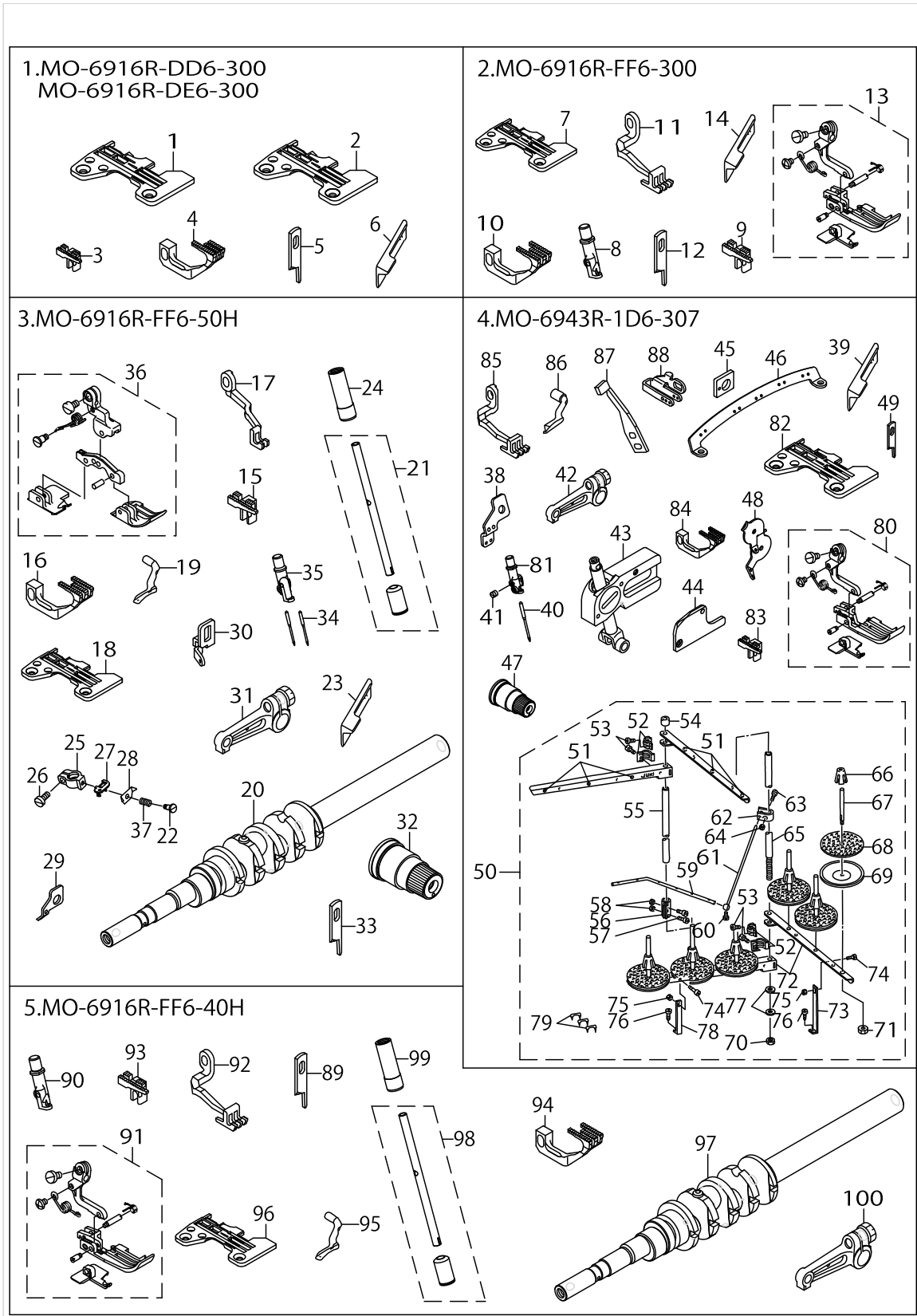
List No : 1351-05

PARTS LIST

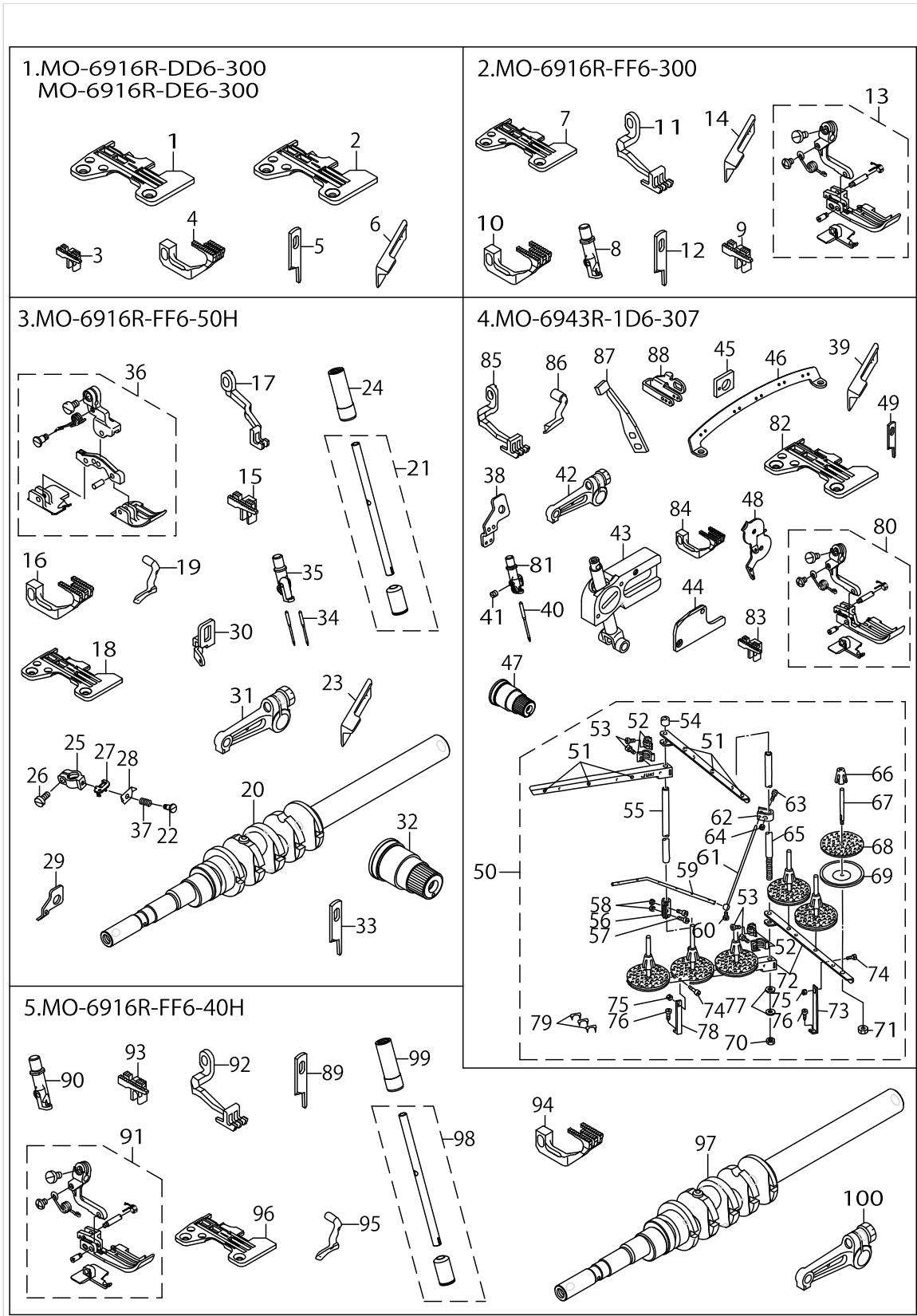
Published:09/10/2017

CONTENTS

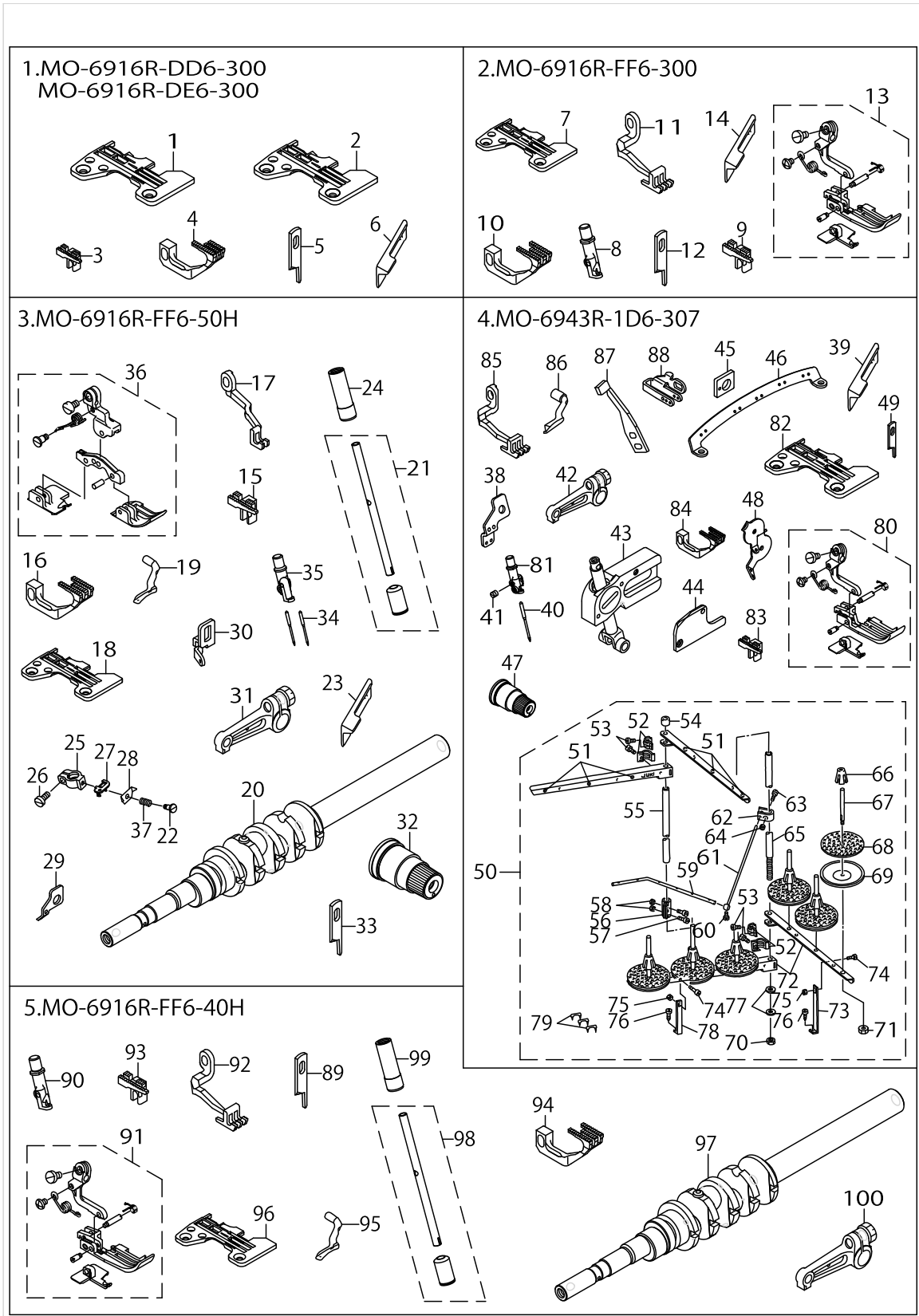
MO-6916R-DD6-300,MO-6916R-DE6-300, MO-6916R-FF6-300, MO-6916R-FF6-50H,.....	1
MO-6943R-1D6-307, MO-6916R-FF6-40H	
MO-6916R-FH6-60H, MO-6943R-2D6-40H.....	7
HOW TO MAKE USE OF THIS PARTS LIST	11



No.	Parts No.	Parts name	Remarks	Level	Cons	Qty
1	R4608J6DD00	THROAT PLATE	FOR MO-6916R-DD6-300			1
2	R4608J6ED00	THROAT PLATE	FOR MO-6916R-DE6-300			1
3	11882909	MAIN FEED DOG				1
4	12173209	DIFFERENTIAL FEED DOG				1
5	13150503	KNIFE	EXCEPT JE			1
6	11845807	UPPER KNIFE	FOR JE			1
7	R4612J6FD00	THROAT PLATE				1
8	12150306	NEEDLE CLAMP, CHAIN LOOPER				1
9	11884004	MAIN FEED DOG				1
10	12173308	DIFFERENTIAL FEED DOG				1
11	12330114	TOP FEED DOG				1
12	13150503	KNIFE	EXCEPT JE			1
13	12320552	PRESSER FOOT ASM.				1
14	11845807	UPPER KNIFE	FOR JE			1
15	11883006	MAIN FEED DOG				1
16	12173506	DIFFERENTIAL FEED DOG				1
17	12330205	TOP FEED DOG				1
18	R4612J6FF00	THROAT PLATE				1
19	11991908	UPPER LOOPER				1
20	40023276	MAIN SHAFT ASM.				1
21	13210059	NEEDLE HOLDER(B) ASM.				1
22	40014729	NEEDLE THREAD PRESSER SCREW				1
23	11845807	UPPER KNIFE	FOR JE			1
24	13207600	NEEDLE HOLDER BUSHING,UPPER				1
25	12304309	NEEDLE CLAMP HOLDER				1
26	SS6080720SP	SCREW				1
27	31203201	NEEDLE THREAD PRESSER GUIDE				1
28	31203300	NEEDLE THREAD PRESSER PLATE				1
29	12304606	TAKE-UP LEVER GUIDE,CHAIN LOOP				1
30	31203003	TAKE-UP LEVER GUIDE				1
31	13131156	UPPER LOOPER ARM B ASM.				1
32	13137559	THREAD TENSION SPRING JUNCTION				1
33	13150503	KNIFE	EXCEPT JE			1
34	MDC270B1600	NEEDLE DCX27 #16				2
35	12257507	NEEDLE CLAMP, CHAIN LOOPER				1
36	12320958	PRESSER FOOT ASM.				1
37	40014730	NEEDLE THREAD PRESSER SPRING				1
38	12281804	TAKE-UP LEVER GUIDE, 2-NEEDLE				1
39	11845807	UPPER KNIFE	FOR JE			1
40	MDC270B1100	NEEDLE DCX27 #11				1
41	SS8080310TP	SCREW 1/8-44 L=2.8				1
42	13131156	UPPER LOOPER ARM B ASM.				1
43	40016841	GUIDE SUPPORT B ASM				1
44	13222302	UPPER LOOPER GAUGE COVER B				1
45	13131909	GUIDE SUPPORT GAUGE				1
46	13225206	THREAD GUIDE				1
47	13137559	THREAD TENSION SPRING JUNCTION				1

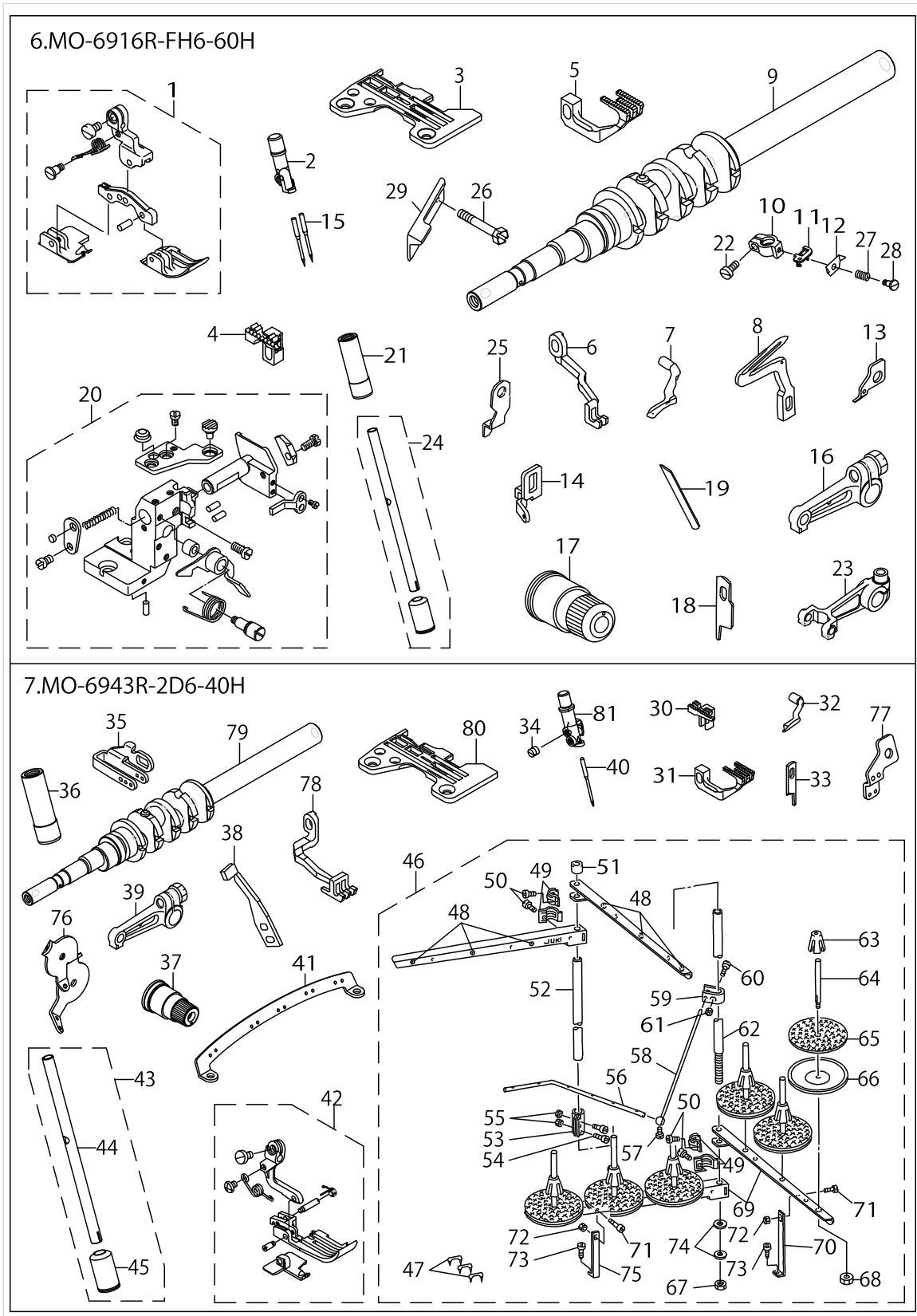


No.	Parts No.	Parts name	Remarks	Level	Cons	Qty
48	13225305	TENSION DISK THREAD GUIDE				1
49	13150503	KNIFE	EXCEPT JE			1
50	11969854	THREAD STAND ASM.				1
51	B3319704L00	THREAD GUIDE		*		6
52	B3318704L00A	THREAD GUIDE ARM JOINT		*		4
53	SM6061610SC	SCREW M6 L=16		*		4
54	B3311704000	SPOOL REST ROD CAP		*		1
55	11185204	SPOOL REST ROD,UPPER		*		1
56	B3305704000A	SPOOL REST ROD JOINT		*		1
57	SM4051405SE	SCREW M5 L=14		*		2
58	NM6050001SE	NUT M5		*		2
59	B3311843000	LOWER THREAD GUIDE		*		1
60	SS7110540SP	SCREW 11/64-40 L=5		*		1
61	B3309704000	THREAD GUIDE ARM		*		1
62	B3304704000A	THREAD GUIDE ARM HOLDER		*		1
63	SM6053000SE	SCREW M5X0.8 L=30		*		1
64	NM6050001SE	NUT M5		*		1
65	11185105	SPOOL REST ROD,LOWER		*		1
66	11185501	SPOOL RETAINER		*		6
67	B3320704L00A	SPOOL PIN		*		6
68	B3311012000	SPOOL REST CUSHION		*		6
69	11966504	SPOOL REST		*		6
70	B3317704000	NUT		*		1
71	NM6050001SE	NUT M5		*		6
72	11969508	SPOOL REST ARM A		*		2
73	B3321704L0B	SPOOL REST ARM SUPPORT, B		*		1
74	SM4061201SE	SCREW M6 L=12		*		2
75	NM6060001SE	NUT M6		*		2
76	SK3382001SE	SCREW D=3.8 L=20		*		2
77	WP1612616SE	WASHER 16X30X2.6		*		2
78	B3321704L00	SPOOL REST ARM SUPPORT, A		*		1
79	MAO11532000	CORD STAPLE		*		3
80	12321451	PRESSER ASM.				1
81	12275004	NEEDLE CLAMP CHAIN LOOPER.				1
82	R4612J6DE01	THROAT PLATE				1
83	11884004	MAIN FEED DOG				1
84	12173308	DIFFERENTIAL FEED DOG				1
85	12330114	TOP FEED DOG				1
86	12176004	UPPER LOOPER				1
87	11999406	NEEDLE HOLDER				1
88	13209002	NEEDLE THREAD GUIDE, 3-NEEDLE				1
89	13150503	KNIFE				1
90	12257507	NEEDLE CLAMP, CHAIN LOOPER				1
91	12320552	PRESSER FOOT ASM.				1
92	12330114	TOP FEED DOG				1
93	11884004	MAIN FEED DOG				1
94	12173308	DIFFERENTIAL FEED DOG				1

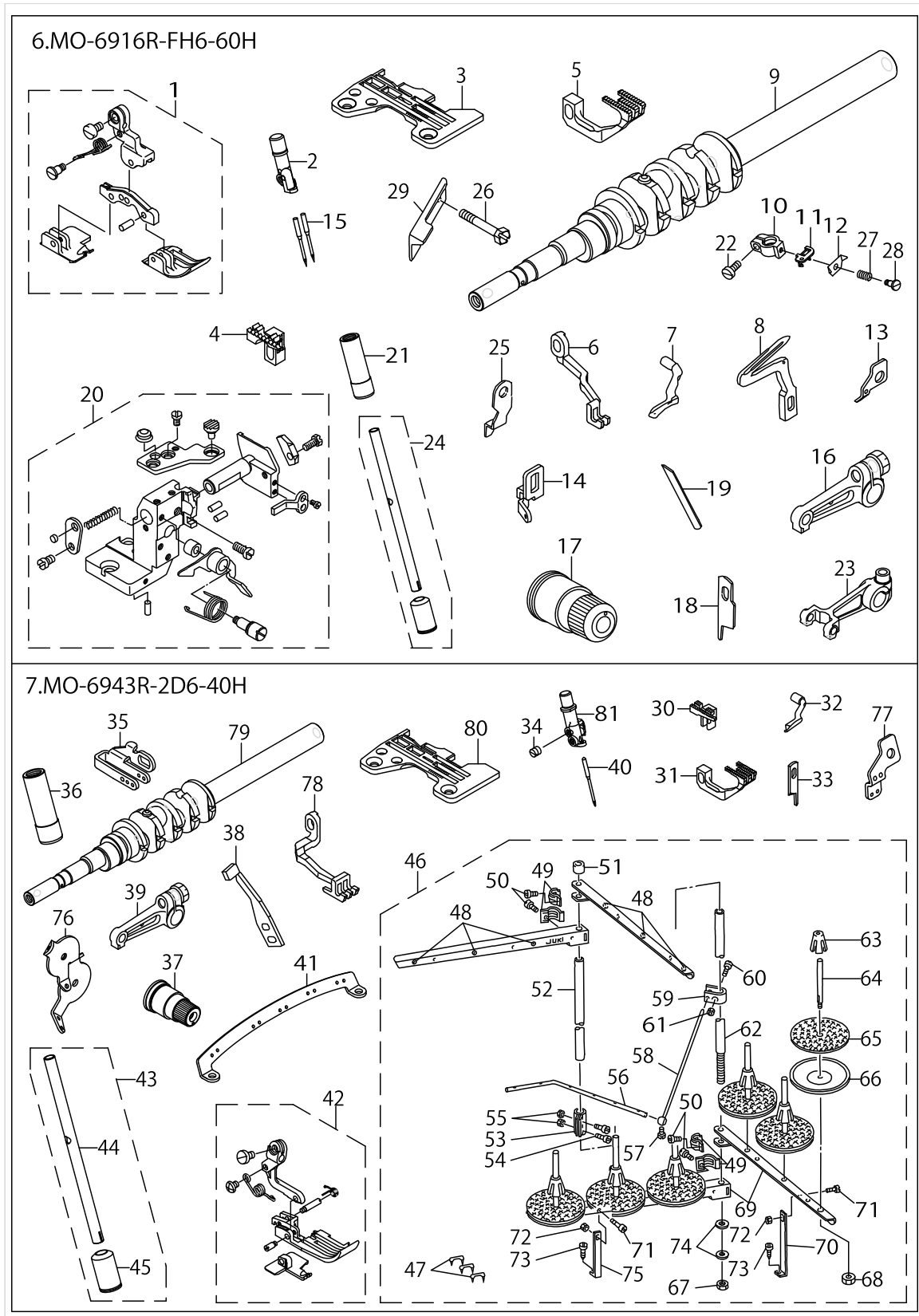


MO-6916R-DD6-300,MO-6916R-DE6-300, MO-6916R-FF6-300, MO-6916R-FF6-50H, MO-6943R-1D6-307, MO-6916R-FF6-

No.	Parts No.	Parts name	Remarks	Level	Cons	Qty
95	11991908	UPPER LOOPER				1
96	R4612J6FD00	THROAT PLATE				1
97	40023276	MAIN SHAFT ASM.				1
98	13210059	NEEDLE HOLDER(B) ASM.				1
99	13207600	NEEDLE HOLDER BUSHING,UPPER				1
100	13131156	UPPER LOOPER ARM B ASM.				1



No.	Parts No.	Parts name	Remarks	Level	Cons	Qty
1	12320958	PRESSER FOOT ASM.				1
2	12150702	NEEDLE CLAMP, CHAIN LOOPER				1
3	R4612J6HK00	THROAT PLATE				1
4	12171104	MAIN FEED DOG				1
5	12174207	DIFFERENTIAL FEED DOG				1
6	12330205	TOP FEED DOG				1
7	12176202	UPPER LOOPER				1
8	11999802	LOWER LOOPER				1
9	40023278	MAIN SHAFT ASM.				1
10	12304309	NEEDLE CLAMP HOLDER				1
11	31203201	NEEDLE THREAD PRESSER GUIDE				1
12	31203300	NEEDLE THREAD PRESSER PLATE				1
13	12304606	TAKE-UP LEVER GUIDE				1
14	31203003	TAKE-UP LEVER GUIDE,CHAIN LOOP				1
15	MDC270B2100	NEEDLE DCX27 #21				2
16	13131156	UPPER LOOPER ARM B ASM.				1
17	12255451	THREAD TENSION SPRING ASM.				2
18	12004909	KNIFE	EXCEPT JE			1
19	11566502	LOWER KNIFE				1
20	13232855	LOWER KNIFE BRACKET ASM.				1
21	13207600	NEEDLE HOLDER BUSHING,UPPER				1
22	SS6080720SP	SCREW				1
23	13207956	NEEDLE DRIVING ARM ASM.				1
24	13210059	NEEDLE HOLDER(B) ASM.				1
25	11565603	UPPER KNIFE COVER				1
26	SS9112420TP	SCREW 11/64-40 L=24	FOR JE			1
27	40014730	NEEDLE THREAD PRESSER SPRING				1
28	40014729	NEEDLE THREAD PRESSER SCREW				1
29	11565900	UPPER KNIFE	FOR JE			1
30	11882305	MAIN FEED DOG				1
31	12173308	DIFFERENTIAL FEED DOG				1
32	12176103	UPPER LOOPER				1
33	13150503	KNIFE				1
34	SS8080310TP	SCREW 1/8-44 L=2.8				1
35	13209002	NEEDLE THREAD GUIDE, 3-NEEDLE				1
36	13207600	NEEDLE HOLDER BUSHING,UPPER				1
37	13137559	THREAD TENSION SPRING JUNCTION				1
38	11999406	NEEDLE HOLDER				1
39	13131156	UPPER LOOPER ARM B ASM.				1
40	MDC270B1100	NEEDLE DCX27 #11				1
41	13225206	THREAD GUIDE				1
42	12321253	PRESSER ASM.				1
43	13210059	NEEDLE HOLDER(B) ASM.				1
44	13210000	NEEDLE HOLDER(B)		*		1
45	13207709	NEEDLE ROD BUSHING, LOWER		*		1
46	11969854	THREAD STAND ASM.				1
47	MAO11532000	CORD STAPLE		*		3



MO-6916R-FH6-60H, MO-6943R-2D6-40H

No.	Parts No.	Parts name	Remarks	Level	Cons	Qty
48	B3319704L00	THREAD GUIDE		*		6
49	B3318704L00	THREAD GUIDE ARM JOINT		*		4
50	SM6061610SC	SCREW M6 L=16		*		4
51	B3311704000	SPOOL REST ROD CAP		*		1
52	11185204	SPOOL REST ROD,UPPER		*		1
53	B3305704000A	SPOOL REST ROD JOINT		*		1
54	SM4051405SE	SCREW M5 L=14		*		2
55	NM6050001SE	NUT M5		*		2
56	B3311843000	LOWER THREAD GUIDE		*		1
57	SS7110540SP	SCREW 11/64-40 L=5		*		1
58	B3309704000	THREAD GUIDE ARM		*		1
59	B3304704000A	THREAD GUIDE ARM HOLDER		*		1
60	SM6053000SE	SCREW M5X0.8 L=30		*		1
61	NM6050001SE	NUT M5		*		1
62	11185105	SPOOL REST ROD,LOWER		*		1
63	11185501	SPOOL RETAINER		*		6
64	B3320704L00	SPOOL PIN		*		6
65	B3311012000	SPOOL REST CUSHION		*		6
66	11966504	SPOOL REST		*		6
67	B3317704000	NUT		*		1
68	NM6050001SE	NUT M5		*		6
69	11969508	SPOOL REST ARM A		*		4
70	B3321704L0B	SPOOL REST ARM SUPPORT, B		*		1
71	SM4061201SE	SCREW M6 L=12		*		2
72	NM6060001SE	NUT M6		*		2
73	SK3382001SE	SCREW D=3.8 L=20		*		2
74	WP1612616SE	WASHER 16X30X2.6		*		2
75	B3321704L00	SPOOL REST ARM SUPPORT, A		*		1
76	13225305	TENSION DISK THREAD GUIDE				1
77	13111604	LEVER GUIDE				1
78	12330114	TOP FEED DOG				1
79	40023276	MAIN SHAFT ASM.				1
80	R4608J6DE01	THROAT PLATE				1
81	12150504	CHAIN LOOPER NEEDLE CLAMP				1

HOW TO MAKE USE OF THIS PARTS LIST

1.As to "#01" and "#02" refer to the "Note" given at the bottom of the respective pages.

2.Codes on the "Qty" column

- Each numeral indicates the number of parts required.
- "0.1" and "2.5" indicate the length (in meters) of the respective parts.

3.Parentheses mean that the corresponding part is a subpart that constructs an assembly part.

4.Dotted lines on the Figures indicate assembly parts.

1. リストページの# 0 1、# 0 2の印は、ページ下の"注記"の説明を参照下さい。
2. 数量欄の数字は、個数を表し、0. 1、2. 5等の数値は、長さ（単位メートル）を表します。
3. 数量欄の（ ）は、組部品を構成している子部品であることを意味します。
4. イラストページの-----枠は、組構成であることを意味します。

NUMERICAL INDEX OF PARTS

PART NO	PAGE	REF NO.	PART NO	PAGE	REF NO.	PART NO	PAGE	REF NO.
11185105	4	65	12304309	2	25	31203201	8	11
11185105	10	62	12304309	8	10	31203300	2	28
11185204	4	55	12304606	2	29	31203300	8	12
11185204	10	52	12304606	8	13	40014729	2	22
11185501	4	66	12320552	2	91	40014729	8	28
11185501	10	63	12320552	4	91	40014730	2	37
11565603	8	25	12320958	2	36	40014730	8	27
11565900	8	29	12320958	8	1	40016841	2	43
11566502	8	19	12321253	8	42	40023276	2	97
11845807	2	39	12321451	4	80	40023276	6	97
11882305	8	30	12330114	2	92	40023276	10	79
11882909	2	3	12330114	4	92	40023278	8	9
11883006	2	15	12330114	10	78	B3304704000A	4	62
11884004	2	93	12330205	2	17	B3304704000A	10	59
11884004	4	93	12330205	8	6	B3305704000A	4	56
11966504	4	69	13111604	10	77	B3305704000A	10	53
11966504	10	66	13131156	2	100	B3309704000	4	61
11969508	4	72	13131156	6	100	B3309704000	10	58
11969508	10	69	13131156	8	39	B3311012000	4	68
11969854	4	50	13131909	2	45	B3311012000	10	65
11969854	8	46	13137559	2	47	B3311704000	4	54
11991908	2	95	13137559	8	37	B3311704000	10	51
11991908	6	95	13150503	2	89	B3311843000	4	59
11999406	4	87	13150503	4	89	B3311843000	10	56
11999406	8	38	13150503	8	33	B3317704000	4	70
11999802	8	8	13207600	2	99	B3317704000	10	67
12004909	8	18	13207600	6	99	B3318704L00	10	49
12150306	2	8	13207600	8	36	B3318704L00A	4	52
12150504	10	81	13207709	8	45	B3319704L00	4	51
12150702	8	2	13207956	8	23	B3319704L00	10	48
12171104	8	4	13209002	4	88	B3320704L00	10	64
12173209	2	4	13209002	8	35	B3320704L00A	4	67
12173308	2	94	13210000	8	44	B3321704L00	4	78
12173308	4	94	13210059	2	98	B3321704L00	10	75
12173308	8	31	13210059	6	98	B3321704LOB	4	73
12173506	2	16	13210059	8	43	B3321704LOB	10	70
12174207	8	5	13222302	2	44	MAO11532000	4	79
12176004	4	86	13225206	2	46	MAO11532000	8	47
12176103	8	32	13225206	8	41	MDC270B1100	2	40
12176202	8	7	13225305	4	48	MDC270B1100	8	40
12255451	8	17	13225305	10	76	MDC270B1600	2	34
12257507	2	90	13232855	8	20	MDC270B2100	8	15
12257507	4	90	31203003	2	30	NM6050001SE	4	71
12275004	4	81	31203003	8	14	NM6050001SE	10	68
12281804	2	38	31203201	2	27	NM6060001SE	4	75

NUMERICAL INDEX OF PARTS

PART NO	PAGE	REF NO.
NM6060001SE	10	72
R4608J6DD00	2	1
R4608J6DE01	10	80
R4608J6ED00	2	2
R4612J6DE01	4	82
R4612J6FD00	2	96
R4612J6FD00	6	96
R4612J6FF00	2	18
R4612J6HK00	8	3
SK3382001SE	4	76
SK3382001SE	10	73
SM4051405SE	4	57
SM4051405SE	10	54
SM4061201SE	4	74
SM4061201SE	10	71
SM6053000SE	4	63
SM6053000SE	10	60
SM6061610SC	4	53
SM6061610SC	10	50
SS6080720SP	2	26
SS6080720SP	8	22
SS7110540SP	4	60
SS7110540SP	10	57
SS8080310TP	2	41
SS8080310TP	8	34
SS9112420TP	8	26
WP1612616SE	4	77
WP1612616SE	10	74