

MODEL : MO-6904R SUBCLASSES

List No : 1349-01

# PARTS LIST

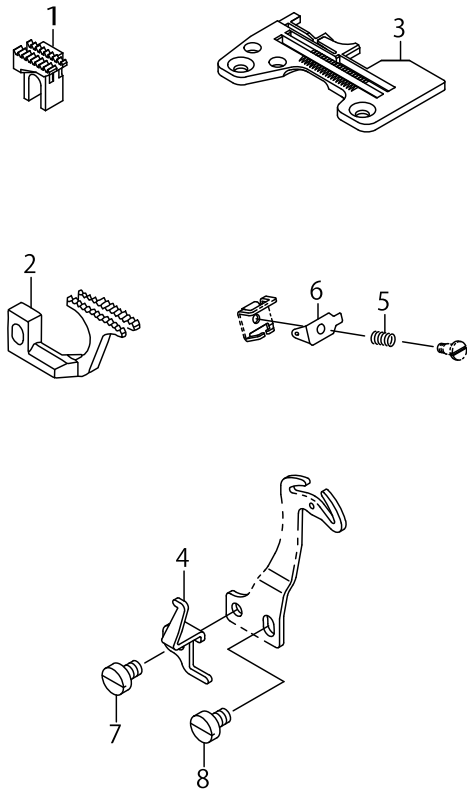
Published:09/10/2017

## CONTENTS

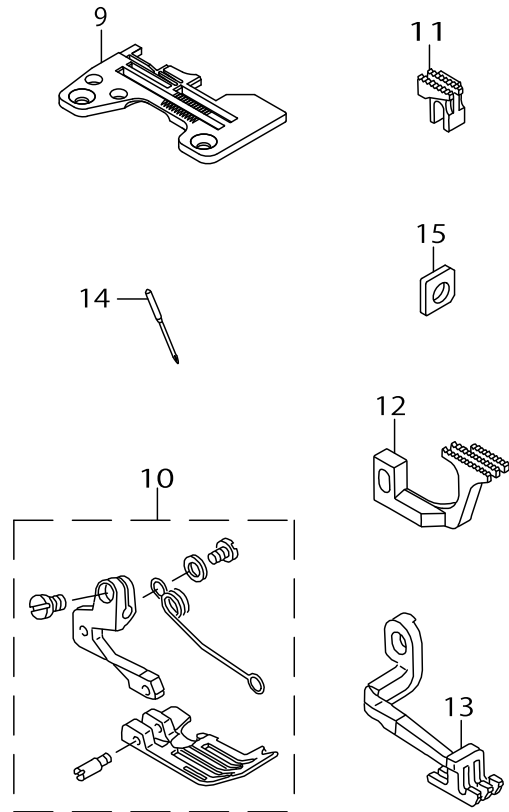
---

MO-6904R-0D4-3F6, MO-6904R-0F6-500, MO-6904R-0H4-50M .....	1
HOW TO MAKE USE OF THIS PARTS LIST .....	3

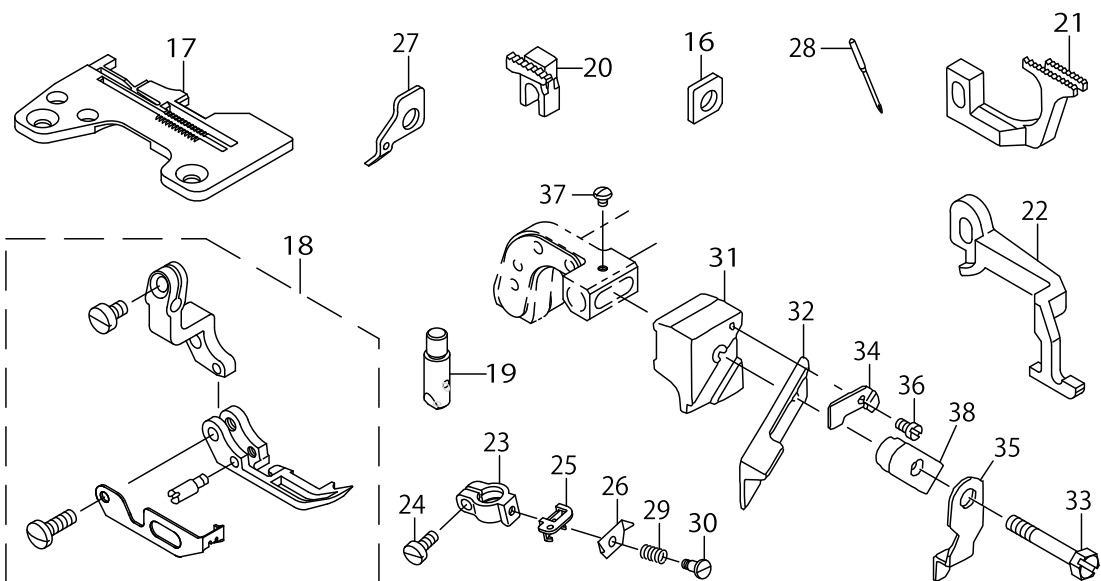
1.MO-6904R-0D4-3F6



2.MO-6904R-0F6-500



3.MO-6904R-0H4-50M



No.	Parts No.	Parts name	Remarks	Level	Cons	Qty
1	11597101	MAIN FEED DOG				1
2	11886207	DIFFERENTIAL FEED DOG				1
3	R4200J6DD0C	THROAT PLATE				1
4	12304705	DIFFERENTIAL FEED CAM				1
5	12112702	NEEDLE THREAD PRESSER SPRING B				1
6	12112504	NEEDLE THREAD PRESSER PLATE C				1
7	SS6090620TP	SCREW				1
8	SS6090670TP	SCREW 9/64-40 L=6				1
9	R4300J6FE0B	THROAT PLATE				1
10	11932258	PRESSER FOOT ASM.				1
11	11883303	MAIN FEED DOG				1
12	11885605	DIFFERENTIAL FEED DOG				1
13	11936804	TOP FEED DOG				1
14	MDC270B1400	NEEDLE DCX27 #14				1
15	13132006	GAUGE				1
16	13132006	GAUGE				1
17	R4200J6HG00	THROAT PLATE				1
18	11946860	PRESSER FOOT ASM. (WITH GUARD)				1
19	12303905	1-NEEDLE, NEEDLE CLAMP				1
20	11947009	MAIN FEED DOG				1
21	11947108	DIFFERENTIAL FEED DOG				1
22	11947207	TOP FEED DOG				1
23	12304309	NEEDLE CLAMP HOLDER				1
24	SS6080720SP	SCREW				1
25	31203201	NEEDLE THREAD PRESSER GUIDE				1
26	31203300	NEEDLE THREAD PRESSER PLATE				1
27	12304606	TAKE-UP LEVER GUIDE				1
28	MDC270B1600	NEEDLE DCX27 #16				1
29	40014730	NEEDLE THREAD PRESSER SPRING				1
30	40014729	NEEDLE THREAD PRESSER SCREW				1
31	11598000	UPPER KNIFE SUPPORT				1
32	11845807	UPPER KNIFE				1
33	SS9111610SP	SCREW 11/64-40 L=16				1
34	11565702	WASHER				1
35	11848405	UPPER KNIFE COVER				1
36	SS4060310SP	SCREW 3/32-56 L=2.5				1
37	SS4060310SP	SCREW 3/32-56 L=2.5				1
38	11565504	UPPER KNIFE PRESSER PLATE				1

## HOW TO MAKE USE OF THIS PARTS LIST

1.As to "#01" and "#02" refer to the "Note" given at the bottom of the respective pages.

2.Codes on the "Qty" column

- Each numeral indicates the number of parts required.
- "0.1" and "2.5" indicate the length (in meters) of the respective parts.

3.Parentheses mean that the corresponding part is a subpart that constructs an assembly part.

4.Dotted lines on the Figures indicate assembly parts.

1. リストページの# 0 1、# 0 2の印は、ページ下の"注記"の説明を参照下さい。
2. 数量欄の数字は、個数を表し、0. 1、2. 5等の数値は、長さ（単位メートル）を表します。
3. 数量欄の（ ）は、組部品を構成している子部品であることを意味します。
4. イラストページの-----枠は、組構成であることを意味します。

# NUMERICAL INDEX OF PARTS

PART NO	PAGE	REF NO.
11565504	2	38
11565702	2	34
11597101	2	1
11598000	2	31
11845807	2	32
11848405	2	35
11883303	2	11
11885605	2	12
11886207	2	2
11932258	2	10
11936804	2	13
11946860	2	18
11947009	2	20
11947108	2	21
11947207	2	22
12112504	2	6
12112702	2	5
12303905	2	19
12304309	2	23
12304606	2	27
12304705	2	4
13132006	2	16
31203201	2	25
31203300	2	26
40014729	2	30
40014730	2	29
MDC270B1400	2	14
MDC270B1600	2	28
R4200J6DD0C	2	3
R4200J6HG00	2	17
R4300J6FE0B	2	9
SS4060310SP	2	37
SS6080720SP	2	24
SS6090620TP	2	7
SS6090670TP	2	8
SS9111610SP	2	33