

MODEL : MEB-3200用 マルチカッティング装置  
List No : 1335-06

## PARTS LIST

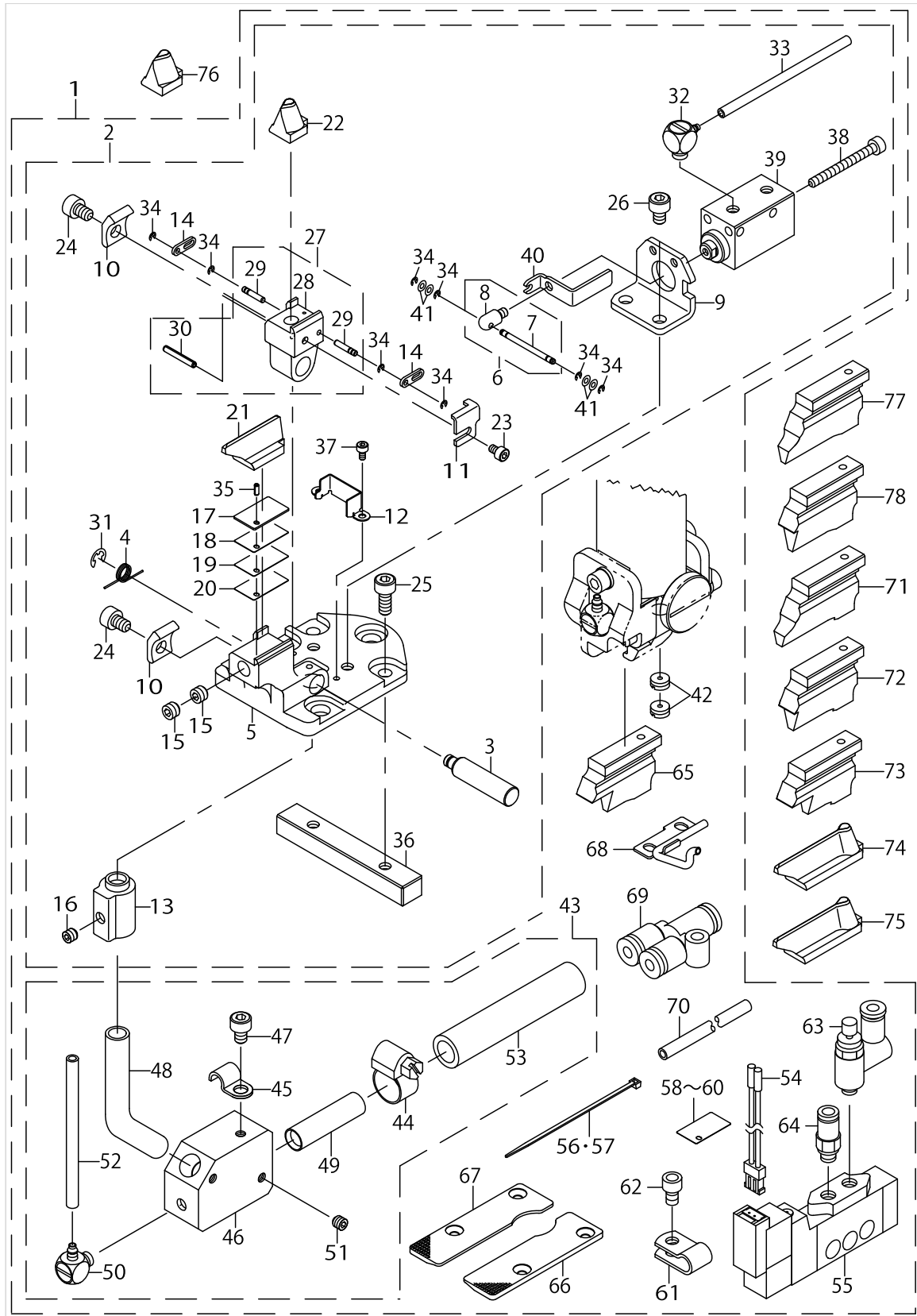
Published:09/10/2017

## CONTENTS

---

MULTICUTTING DEVICE.....	1
HOW TO MAKE USE OF THIS PARTS LIST .....	5

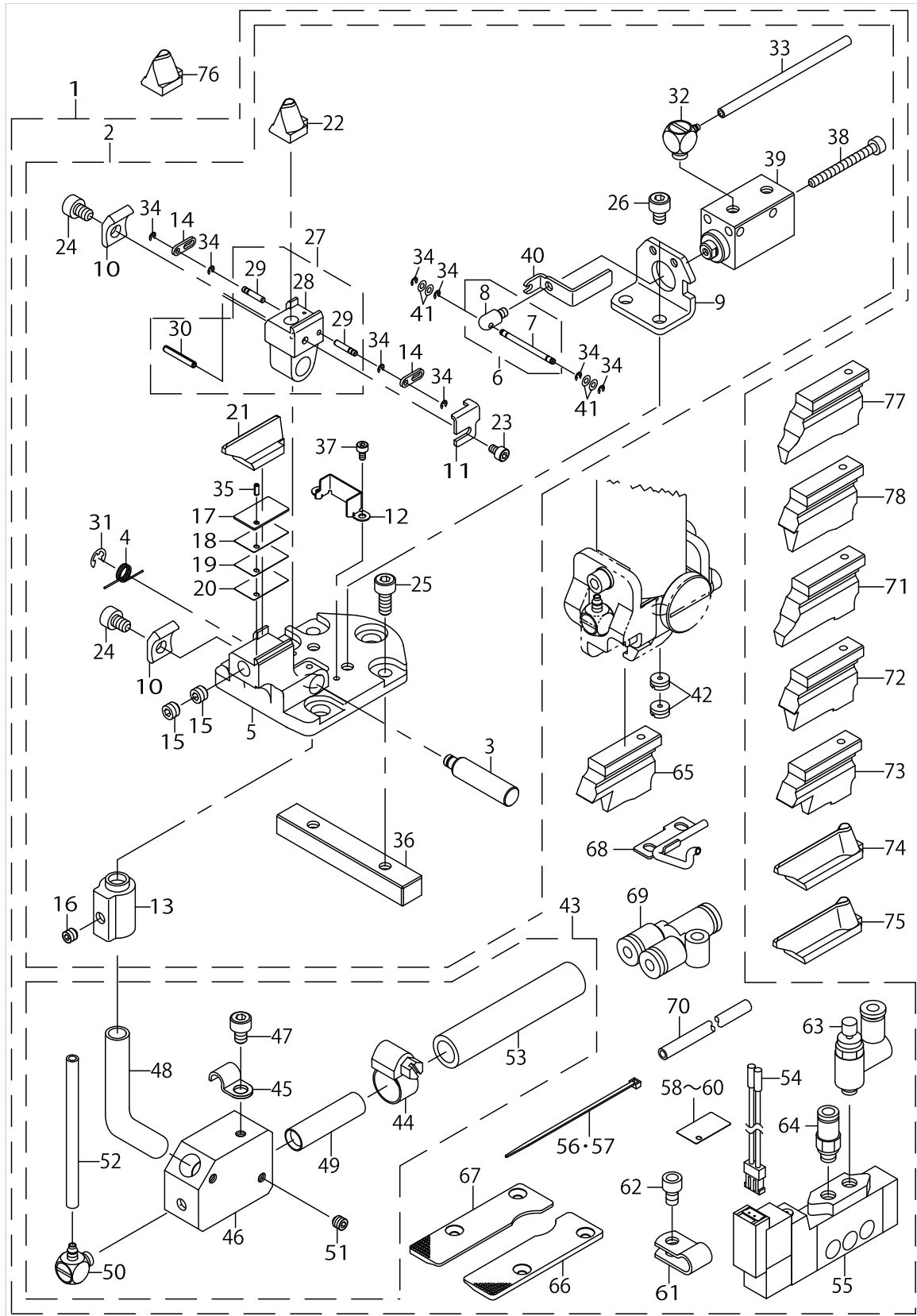
MULTICUTTING DEVICE



MULTICUTTING DEVICE

No.	Parts No.	Parts name	Remarks	Level	Cons	Qty
1	32084956	MULTI CUTTING APPARATUS				1
2	32085052	KNIFE BASE, A ASM.		*		1
3	32085201	KNIFE BASE SHAFT		*		1
4	32085300	SPRING		*		1
5	32085003	KNIFE BASE, A		*		1
6	32085755	KNIFE BASE CYLINDER PIN ASM.		*		1
7	32085508	KNIFE BASE LINK SHAFT, B		*		1
8	32085706	KNIFE BASE CYLINDER PIN		*		1
9	32085805	CYLINDER BRACKET		*		1
10	32085904	KNIFE FIX PLATE		*		2
11	32086001	KNIFE STOPPER		*		1
12	32086100	DUST GUARD		*		1
13	32086209	DUST CHUTE BOSS		*		1
14	32085607	KNIFE BASE LINK		*		2
15	SM8050412TP	SCREW M5 L=4		*		2
16	SM8040402TP	SCREW M4X0.7 L=4		*		1
17	32086605	KNIFE BASE SPACER, A		*		1
18	32086704	KNIFE BASE SPACER, B	SELECTIVE PARTS	*		1
19	32086803	KNIFE BASE SPACER, C	SELECTIVE PARTS	*		1
20	32086902	KNIFE BASE SPACER, D	SELECTIVE PARTS	*		1
21	32087108	KNIFE(STRAIGHT LINE)		*	☆	1
22	32087207	KNIFE(EYELET), 3A		*	☆	1
23	SM6850402TN	BOLT M2.5 L=4		*		1
24	SM6040602TP	SCREW M4 L=6		*		2
25	SM6041002TP	SCREW M4 L=10		*		2
26	SM6040602TP	SCREW M4 L=6		*		2
27	32085151	KNIFE BASE, B ASM.		*		1
28	32085102	KNIFE BASE, B		*		1
29	32085409	KNIFE BASE LINK SHAFT, A		*		2
30	PS0200142K0	SPRING PIN 2.0X14		*		1
31	RE0320000K0	E-RING 3.2		*		1
32	PJ046059008	ELBOW		*		2
33	BT0320201EB	TUBE BLACK 3.18X2		*		3
34	RE0120000K0	E-RING		*		8
35	PS0150042K0	SPRING PIN 1.5X 4		*		1
36	32061806	KNIFE BASE KEY		*		1
37	SM6020452TP	HEXAGONAL HOLE BOLT		*		2
38	SM6033002TP	SCREW M3 L=30		*		2
39	PA100102800	AIR CYLINDER		*		1
40	32088502	AIR CYLINDER GUIDE		*		1
41	32088601	WASHER 1.8X3.8X0.3		*		4
42	SS8660330SP	SCREW 1/4-40 L= 3.0		*		2
43	32086357	DUST SUCTIONER ASM.		*		1
44	16121907	HOSE BAND		*		1
45	B3538112000	OIL RETURN TUBE HOLDER		*		1
46	32086308	DUST SUCTIONER		*		1
47	SM6040602TP	SCREW M4 L=6		*		1

# MULTICUTTING DEVICE



MULTICUTTING DEVICE

No.	Parts No.	Parts name	Remarks	Level	Cons	Qty
48	32086407	DUST CHUTE, A		*		1
49	32086506	DUST CHUTE, B		*		1
50	PJ046052501	ELBOW		*		1
51	SM8040402TP	SCREW M4X0.7 L=4		*		2
52	BT0400251EB	URETHANE HOSE, BLACK		*		1.5
53	BT1200801EF	TUBE		*		1.5
54	M9024620000	SOLENOID VALVE CONNECTOR		*		1
55	PV150209100	SOLENOID VALVE		*		1
56	EA9500B0100	CABLE BAND		*		2
57	EA9500B0200	CABLE BAND 150		*		3
58	32086704	KNIFE BASE SPACER, B		*		1
59	32086803	KNIFE BASE SPACER, C		*		1
60	32086902	KNIFE BASE SPACER, D		*		1
61	HX00150000A	CABLE CLAMP		*		1
62	SM6040602TP	SCREW M4 L=6		*		1
63	PC010522000	SPEED CONTROLLER		*		1
64	PJ210203100	HALF UNION		*		1
65	32087801	KNIFE HOLDER 18MM(EYELET), A		*	☆	1
66	40040681	HOLDING PLATE (M) RIGHT		*		1
67	40040682	HOLDING PLATE (M) LEFT		*		1
68	40049793	PIPE ASSY		*		1
69	PJ308040002	QUICK COUPLING		*		1
70	BT0400251EB	URETHANE HOSE, BLACK		*		1.5
71	32087900	KNIFE HOLDER 32MM(EYELET), B	OPTIONAL PARTS		☆	1
72	32088007	KNIFE HOLDER 26MM(EYELET), B	OPTIONAL PARTS		☆	1
73	32088106	KNIFE HOLDER 18MM(EYELET), B	OPTIONAL PARTS		☆	1
74	40012587	KNIFE(EYELET) 3B	OPTIONAL PARTS		☆	1
75	40012588	KNIFE(EYELET) 6B	OPTIONAL PARTS		☆	1
76	32087306	KNIFE(EYELET), 6A	OPTIONAL PARTS		☆	1
77	32087603	KNIFE HOLDER 32MM(EYELET), A	OPTIONAL PARTS		☆	1
78	32087702	KNIFE HOLDER 26MM(EYELET), A	OPTIONAL PARTS		☆	1

## HOW TO MAKE USE OF THIS PARTS LIST

1.As to "#01" and "#02" refer to the "Note" given at the bottom of the respective pages.

2.Codes on the "Qty" column

- Each numeral indicates the number of parts required.
- "0.1" and "2.5" indicate the length (in meters) of the respective parts.

3.Parentheses mean that the corresponding part is a subpart that constructs an assembly part.

4.Dotted lines on the Figures indicate assembly parts.

1. リストページの# 0 1、# 0 2の印は、ページ下の"注記"の説明を参照下さい。
2. 数量欄の数字は、個数を表し、0. 1、2. 5等の数値は、長さ（単位メートル）を表します。
3. 数量欄の（ ）は、組部品を構成している子部品であることを意味します。
4. イラストページの-----枠は、組構成であることを意味します。

# NUMERICAL INDEX OF PARTS

PART NO	PAGE	REF NO.	PART NO	PAGE	REF NO.
16121907	2	44	40049793	4	68
32061806	2	36	B3538112000	2	45
32084956	2	1	BT0320201EB	2	33
32085003	2	5	BT0400251EB	4	70
32085052	2	2	BT1200801EF	4	53
32085102	2	28	EA9500B0100	4	56·57
32085151	2	27	EA9500B0200	4	56·57
32085201	2	3	HX00150000A	4	61
32085300	2	4	M9024620000	4	54
32085409	2	29	PA100102800	2	39
32085508	2	7	PC010522000	4	63
32085607	2	14	PJ046052501	4	50
32085706	2	8	PJ046059008	2	32
32085755	2	6	PJ210203100	4	64
32085805	2	9	PJ308040002	4	69
32085904	2	10	PS0150042K0	2	35
32086001	2	11	PS0200142K0	2	30
32086100	2	12	PV150209100	4	55
32086209	2	13	RE0120000K0	2	34
32086308	2	46	RE0320000K0	2	31
32086357	2	43	SM6020452TP	2	37
32086407	4	48	SM6033002TP	2	38
32086506	4	49	SM6040602TP	2	62
32086605	2	17	SM6040602TP	4	62
32086704	2	58~60	SM6041002TP	2	25
32086704	4	58~60	SM6850402TN	2	23
32086803	2	58~60	SM8040402TP	2	51
32086803	4	58~60	SM8040402TP	4	51
32086902	2	58~60	SM8050412TP	2	15
32086902	4	58~60	SS8660330SP	2	42
32087108	2	21			
32087207	2	22			
32087306	4	76			
32087603	4	77			
32087702	4	78			
32087801	4	65			
32087900	4	71			
32088007	4	72			
32088106	4	73			
32088502	2	40			
32088601	2	41			
40012587	4	74			
40012588	4	75			
40040681	4	66			
40040682	4	67			