

MODEL : MO-6716 Subclasses

List No : 1323-01

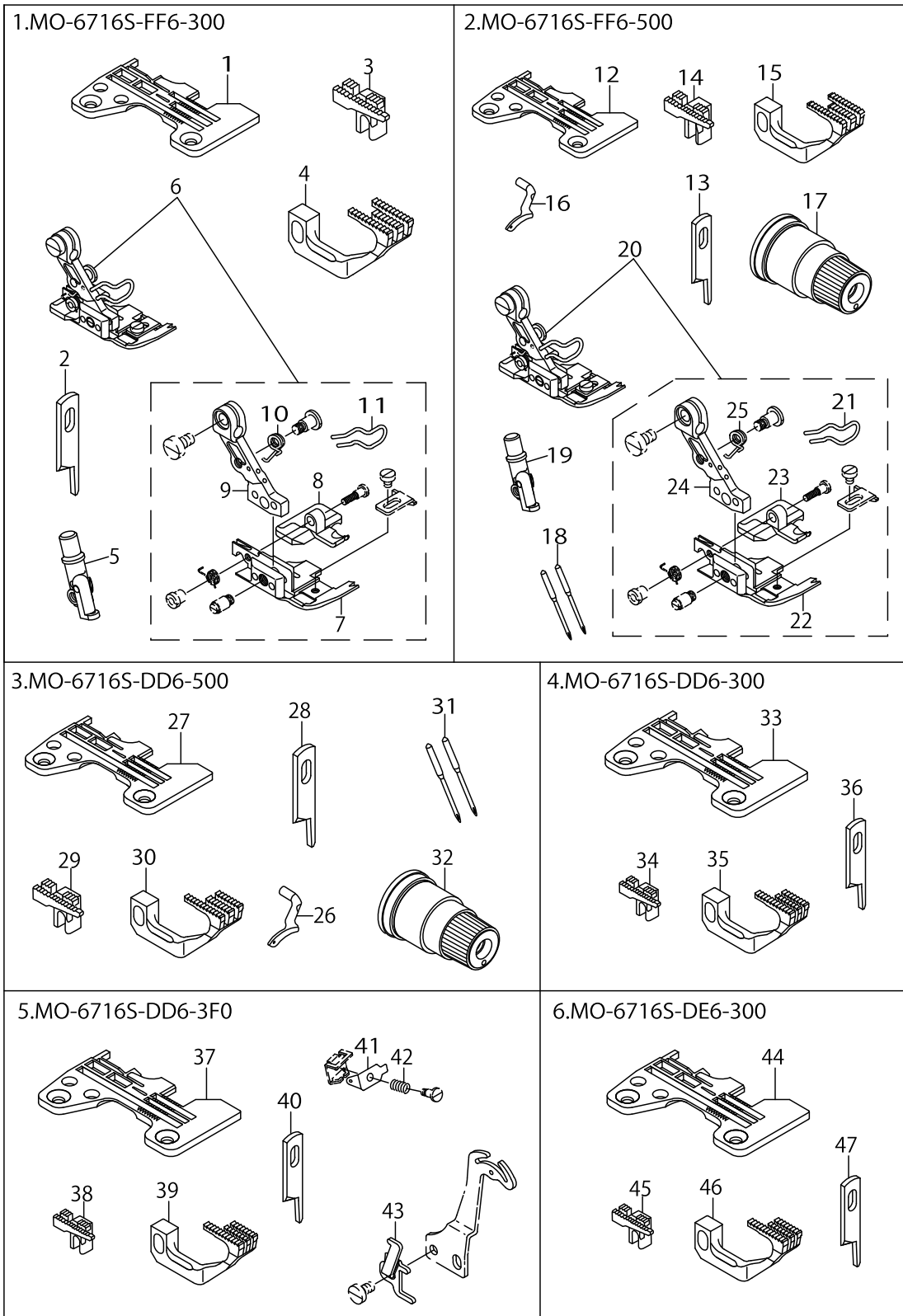
PARTS LIST

Published:09/10/2017

CONTENTS

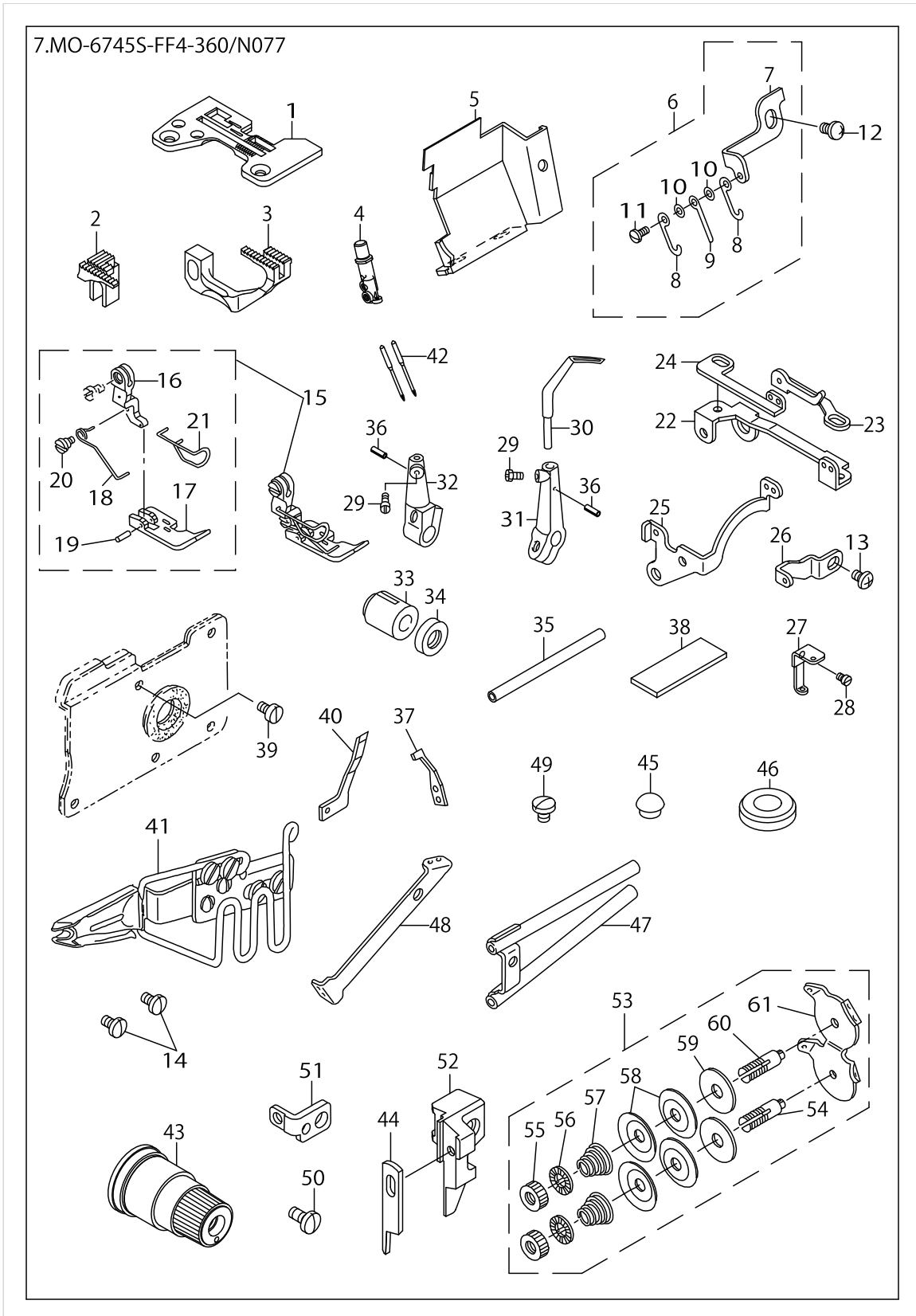
MO-6716S, MO-6745S SUBCLASSES (1)	1
MO-6716S, MO-6745S SUBCLASSES (2)	3
HOW TO MAKE USE OF THIS PARTS LIST	7

MO-6716S, MO-6745S SUBCLASSES (1)



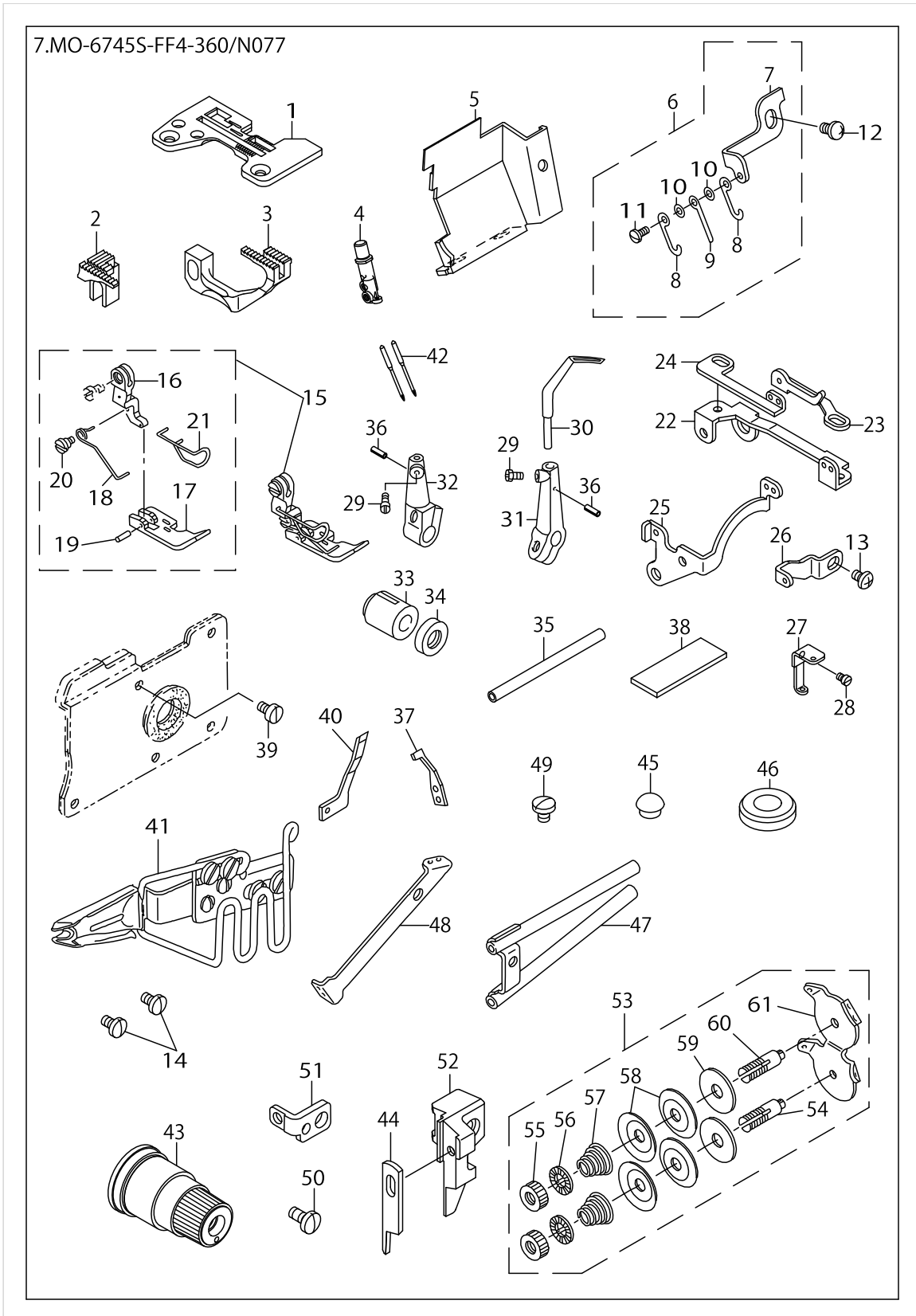
MO-6716S, MO-6745S SUBCLASSES (1)

No.	Parts No.	Parts name	Remarks	Level	Cons	Qty
1	R4612J6FD00	THROAT PLATE				1
2	13150503	KNIFE				1
3	11884004	MAIN FEED DOG				1
4	12173308	DIFFERENTIAL FEED DOG				1
5	12257507	NEEDLE CLAMP, CHAIN LOOPER				1
6	12154266	PRESSER FOOT ASM.				1
7	12162707	PRESSER FOOT		*		1
8	12165304	REAR PRESSER FOOT		*		1
9	12157004	PRESSER FOOT HINGE		*		1
10	12168001	PRESSER FOOT ARM SPRING, (B)		*		1
11	12168209	FINGER GUARD				1
12	R4612J6FG00	THROAT PLATE				1
13	13150503	KNIFE				1
14	11883006	MAIN FEED DOG				1
15	12173506	DIFFERENTIAL FEED DOG				1
16	11999208	UPPER LOOPER				1
17	13137559	TENSION SPRING UNION (RED)				1
18	MDC270B1600	NEEDLE DCX27 #16				2
19	12257507	NEEDLE CLAMP, CHAIN LOOPER				1
20	12154266	PRESSER FOOT ASM.				1
21	12168209	FINGER GUARD		*		1
22	12162707	PRESSER FOOT		*		1
23	12165304	REAR PRESSER FOOT		*		1
24	12157004	PRESSER FOOT HINGE		*		1
25	12168001	PRESSER FOOT ARM SPRING, (B)		*		1
26	11999208	UPPER LOOPER				1
27	R4608J6DF00	THROAT PLATE				1
28	13150503	KNIFE				1
29	11980802	MAIN FEED DOG				1
30	12173902	DIFFERENTIAL FEED DOG				1
31	MDC270B1600	NEEDLE DCX27 #16				2
32	13137559	TENSION SPRING JUNCTION				1
33	R4608J6DD00	THROAT PLATE				1
34	11882909	MAIN FEED DOG				1
35	12173209	DIFFERENTIAL FEED DOG				1
36	13150503	KNIFE				1
37	R4608J6DD00	THROAT PLATE				1
38	11882909	MAIN FEED DOG				1
39	12173209	DIFFERENTIAL FEED DOG				1
40	13150503	KNIFE				1
41	12112504	NEEDLE THREAD PRESSER PLATE C				1
42	12112702	NEEDLE THREAD PRESSER SPRING B				1
43	12112603	DIFFERENTIAL FEED CAM				1
44	R4608J6ED00	THROAT PLATE				1
45	11882909	MAIN FEED DOG				1
46	12173209	DIFFERENTIAL FEED DOG				1
47	13150503	KNIFE				1



MO-6716S, MO-6745S SUBCLASSES (2)

No.	Parts No.	Parts name	Remarks	Level	Cons	Qty
1	40026881	THROAT PLATE				1
2	40031382	MAIN FEED DOG				1
3	40031381	DIFFERENTIAL FEED DOG				1
4	12150306	NEEDLE CLAMP, CHAIN LOOPER				1
5	13105309	CLOTH WASTE COVER				1
6	12145652	CHAIN LOOPER THREAD TAKE-UP				1
7	12145702	THREAD TAKE-UP FITTING BASE		*		1
8	B1427816000	NEEDLE THREAD TAKE-UP LEVER A		*		2
9	B1428816000	NEEDLE THREAD TAKE-UP LEVER B		*		1
10	WP0250516SD	WASHER 2.5X6X0.5		*		2
11	SS7060510SP	SCREW 3/32-56 L=4.8		*		1
12	SM4040655SP	SCREW M4 L=6				1
13	SM4040655SP	SCREW M4 L=6				1
14	SS7110710SL	SCREW 11/64-40 L=7.0				2
15	40031637	PRESSER FOOT COMPL.				1
16	11872405	PRESSER FOOT HINGE		*		1
17	40026885	PRESSER FOOT		*		1
18	11892106	PRESSER SPRING		*		1
19	B1511357000	PIN		*		1
20	SD0370401SP	HINGE SCREW D= 3.70 H= 4.0		*		1
21	11894706	FINGER GUARD		*		1
22	12146007	THREAD GUIDE BASE				1
23	12146106	THREAD GUIDE A				1
24	12146205	THREAD GUIDE B				1
25	12146304	THREAD GUIDE				1
26	12145801	CHAIN LOOPER THREAD GUIDE				1
27	12145900	NEEDLE THREAD GUIDE				1
28	SS6060340SP	SCREW 3/32-56 L= 2.5				1
29	SS9090610TP	SCREW 9/64-40 L=5.5				2
30	11999604	DOUBLE-RING LOOPER				2
31	B211784500A	CHAIN LOOPER SUPPORT ARM A				1
32	B211784500B	CHAIN LOOPER SUPPORT ARM				1
33	B2110845000	BUSHING, FRONT				1
34	B2121845000	OIL SEAL				1
35	B2109816000	CHAIN LOOPER SHAFT				1
36	PS0200062KH	SPRING PIN 2X6				2
37	11891009	NEEDLE GUARD				1
38	B2528845000	CHIP GUARD PLATE				1
39	SS6090630TP	SCREW 9/64-40 L=6				1
40	11890902	NEEDLE GUARD				1
41	MAN0770F0A0	TOP CENTER PLAIT BINDER ASM.				1
42	MDC270B1100	NEEDLE DCX27 #11				2
43	13140652	TENSION SPRING UNION (GREEN)				2
44	13150503	KNIFE				1
45	TA0750404R0	PLUG D=7.5 L=3.5				1
46	TA2000502R0	RUBBER PLUG				1
47	11893054	LOOPER THREAD GUIDE TUBE ASM.				1



MO-6716S, MO-6745S SUBCLASSES (2)

No.	Parts No.	Parts name	Remarks	Level	Cons	Qty
48	11893104	LOOPER THREAD GUIDE TUBE GUIDE				1
49	SS7090510SP	SCREW 9/64-40 L= 4.6				1
50	SS7110840SP	SCREW 11/64-40 L=7.8				1
51	11854205	SUPPORT				1
52	40033522	KNIFE SUPPORT				1
53	11892957	TENSION CONTROLLER ASM.				1
54	11892908	THREAD TENSION POST B		*		1
55	B2314019000	TENSION POST NUT		*		2
56	B3120125000	ROTATING STOPPER		*		2
57	B2017372000	TENSION SPRING NO.1		*		2
58	B3126012000	THREAD TENSION DISK		*		4
59	B3120352000	THREAD TENSION SPRING FELT		*		2
60	11550803	THREAD TENSION POST		*		1
61	11892809	THREAD GUIDE		*		1

HOW TO MAKE USE OF THIS PARTS LIST

1.As to "#01" and "#02" refer to the "Note" given at the bottom of the respective pages.

2.Codes on the "Qty" column

- Each numeral indicates the number of parts required.
- "0.1" and "2.5" indicate the length (in meters) of the respective parts.

3.Parentheses mean that the corresponding part is a subpart that constructs an assembly part.

4.Dotted lines on the Figures indicate assembly parts.

1. リストページの# 0 1、# 0 2の印は、ページ下の"注記"の説明を参照下さい。
2. 数量欄の数字は、個数を表し、0. 1、2. 5等の数値は、長さ（単位メートル）を表します。
3. 数量欄の（ ）は、組部品を構成している子部品であることを意味します。
4. イラストページの-----枠は、組構成であることを意味します。

NUMERICAL INDEX OF PARTS

PART NO	PAGE	REF NO.	PART NO	PAGE	REF NO.
11550803	6	60	13150503	4	44
11854205	6	51	40026881	4	1
11872405	4	16	40026885	4	17
11882909	2	45	40031381	4	3
11883006	2	14	40031382	4	2
11884004	2	3	40031637	4	15
11890902	4	40	40033522	6	52
11891009	4	37	B1427816000	4	8
11892106	4	18	B1428816000	4	9
11892809	6	61	B1511357000	4	19
11892908	6	54	B2017372000	6	57
11892957	6	53	B2109816000	4	35
11893054	4	47	B2110845000	4	33
11893104	6	48	B211784500A	4	31
11894706	4	21	B211784500B	4	32
11980802	2	29	B2121845000	4	34
11999208	2	26	B2314019000	6	55
11999604	4	30	B2528845000	4	38
12112504	2	41	B3120125000	6	56
12112603	2	43	B3120352000	6	59
12112702	2	42	B3126012000	6	58
12145652	4	6	MAN0770F0A0	4	41
12145702	4	7	MDC270B1100	4	42
12145801	4	26	MDC270B1600	2	31
12145900	4	27	PS0200062KH	4	36
12146007	4	22	R4608J6DD00	2	37
12146106	4	23	R4608J6DF00	2	27
12146205	4	24	R4608J6ED00	2	44
12146304	4	25	R4612J6FD00	2	1
12150306	4	4	R4612J6FG00	2	12
12154266	2	20	SD0370401SP	4	20
12157004	2	24	SM4040655SP	4	13
12162707	2	22	SS6060340SP	4	28
12165304	2	23	SS6090630TP	4	39
12168001	2	25	SS7060510SP	4	11
12168209	2	21	SS7090510SP	6	49
12173209	2	46	SS7110710SL	4	14
12173308	2	4	SS7110840SP	6	50
12173506	2	15	SS9090610TP	4	29
12173902	2	30	TA0750404R0	4	45
12257507	2	19	TA2000502R0	4	46
13105309	4	5	WP0250516SD	4	10
13137559	2	32			
13140652	4	43			
13150503	2	47			