

MODEL : MO-6904 SUBCLASSES

List No : 1316-01

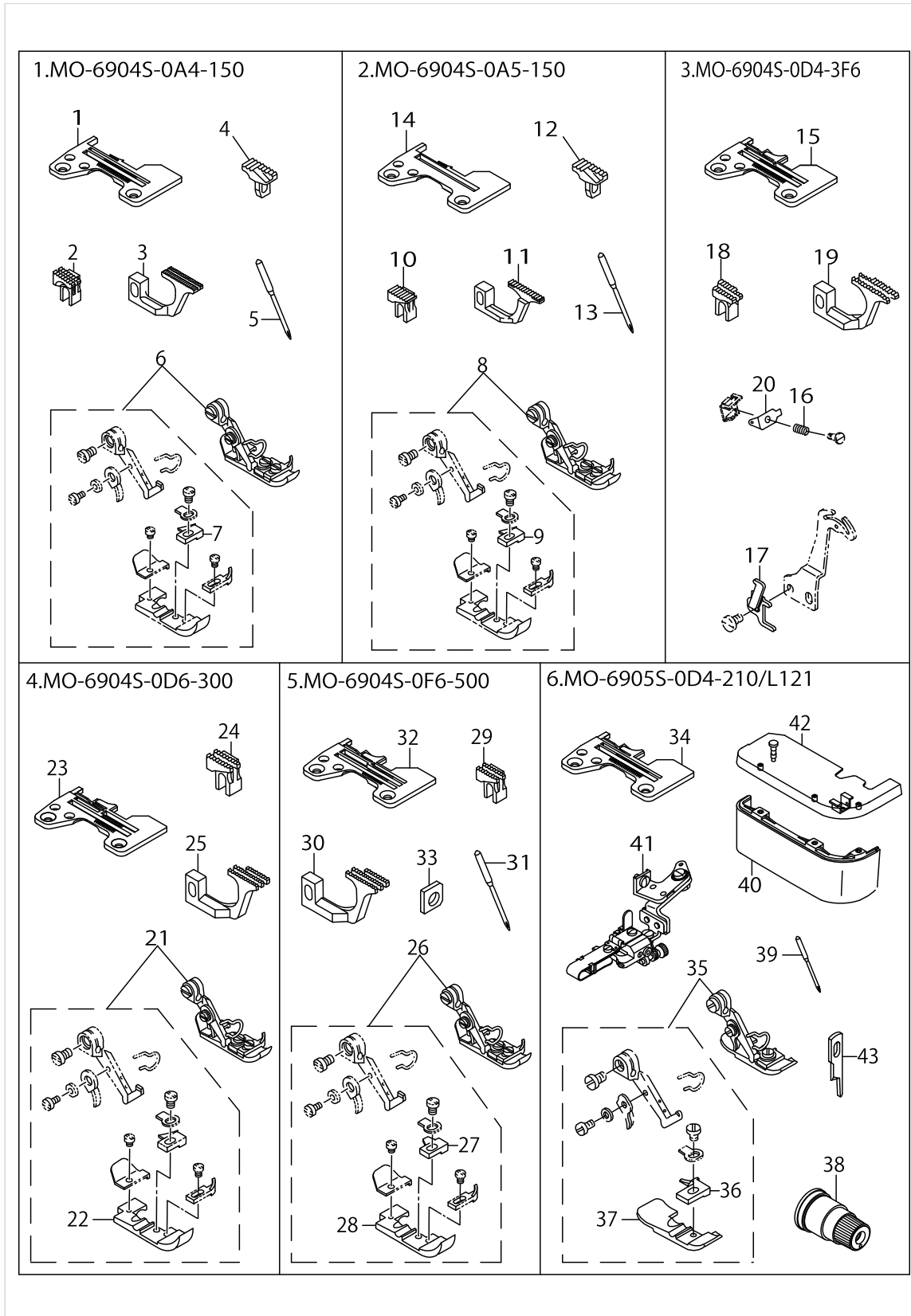
PARTS LIST

Published:09/10/2017

CONTENTS

MO-6904S SUBCLASSES (1)	1
MO-6904S SUBCLASSES (2)	3
HOW TO MAKE USE OF THIS PARTS LIST	5

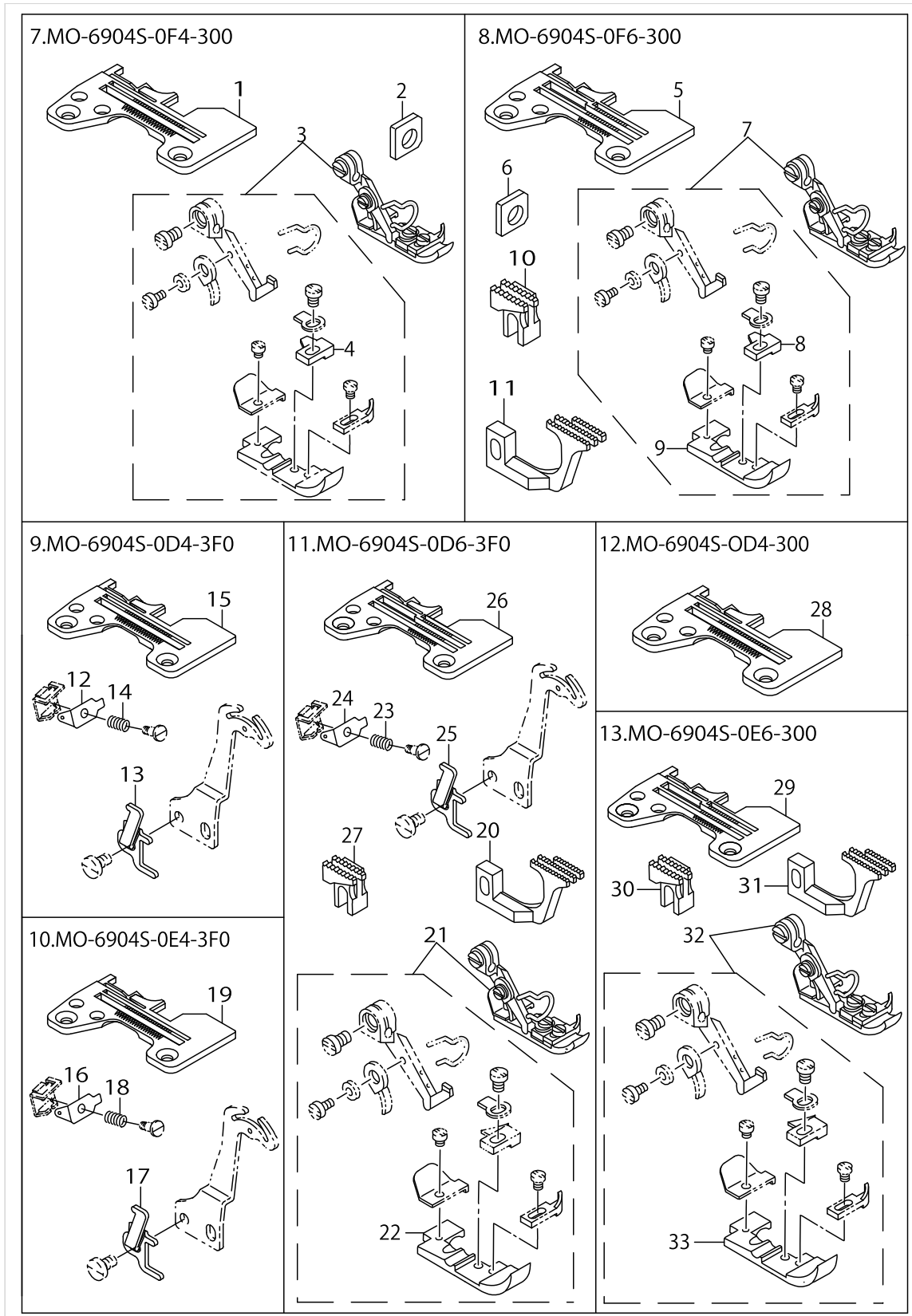
MO-6904S SUBCLASSES (1)



MO-6904S SUBCLASSES (1)

No.	Parts No.	Parts name	Remarks	Level	Cons	Qty
1	R4200J6AC00	THROAT PLATE				1
2	11898905	MAIN FEED DOG				1
3	11899002	DEFERENTIAL FEED DOG				1
4	11887007	AUXILIARY FEED DOG				1
5	MDC100B0800	NEEDLE DCX1 #8				1
6	11876067	PRESSER FOOT ASM.				1
7	11792900	STITCH TONGUE		*		1
8	11876067	PRESSER FOOT ASM.				1
9	11792900	STITCH TONGUE		*		1
10	11882008	MAIN FEED DOG				1
11	11885001	DIFFERENTIAL FEED DOG				1
12	11887007	AUXILIARY FEED DOG				1
13	MDC100B0800	NEEDLE DCX1 #8				1
14	R4100J6AC00	THROAT PLATE				1
15	R4200J6DD0C	THROAT PLATE				1
16	12112702	NEEDLE THREAD PRESSER SPRING B				1
17	12112603	DIFFERENTIAL FEED CAM				1
18	11597101	MAIN FEED DOG				1
19	11886207	DIFFERENTIAL FEED DOG				1
20	12112504	NEEDLE THREAD PRESSER PLATE C				1
21	11876364	PRESSER FOOT ASM.				1
22	11873007	PRESSER FOOT		*		1
23	R4300J6DE00	THROAT PLATE				1
24	11882206	MAIN FEED DOG				1
25	11885100	DIFFERENTIAL FEED DOG				1
26	11876463	PRESSER FOOT ASM.				1
27	B1509804C0A	STITCH TONGUE		*		1
28	11873007	PRESSER FOOT		*		1
29	11883303	MAIN FEED DOG				1
30	11885605	DIFFERENTIAL FEED DOG				1
31	MDC270B1400	NEEDLE DCX27 #14				1
32	R4300J6FE0B	THROAT PLATE				1
33	13132006	GAUGE				1
34	R4200J6DD00	THROAT PLATE				1
35	11992153	PRESSER FOOT ASM.				1
36	11874807	STITCH TONGUE		*		1
37	11992104	PRESSER FOOT		*		1
38	13138359	THREAD TENSION SPRING JUNCTION				1
39	MDC270B0900	NEEDLE DCX27 #9				1
40	12104709	CLOTH PLATE COVER				1
41	MAL121000A0	SKIRT DRAGGING COMPL.				1
42	12105557	CLOTH PLATE ASM.				1
43	13150602	PLAIN KNIFE				1

MO-6904S SUBCLASSES (2)



MO-6904S SUBCLASSES (2)

No.	Parts No.	Parts name	Remarks	Level	Cons	Qty
1	R4200J6FD00	THROAT PLATE				1
2	13132006	GAUGE				1
3	11876265	PRESSER FOOT ASM.				1
4	B1509804C0A	STITCH TONGUE		*		1
5	R4300J6FE0B	THROAT PLATE				1
6	13132006	GAUGE				1
7	11876463	PRESSER FOOT ASM.				1
8	B1509804C0A	STITCH TONGUE		*		1
9	11873007	PRESSER FOOT		*		1
10	11882206	MAIN FEED DOG				1
11	11885100	DIFFERENTIAL FEED DOG				1
12	12112504	NEEDLE THREAD PRESSER PLATE C				1
13	12112603	DIFFERENTIAL FEED CAM				1
14	12112702	NEEDLE THREAD PRESSER SPRING B				1
15	R4200J6DD0A	THROAT PLATE				1
16	12112504	NEEDLE THREAD PRESSER PLATE C				1
17	12112603	DIFFERENTIAL FEED CAM				1
18	12112702	NEEDLE THREAD PRESSER SPRING B				1
19	R4200J6ED0A	THROAT PLATE				1
20	11885100	DIFFERENTIAL FEED DOG				1
21	11876364	PRESSER FOOT ASM.				1
22	11873007	PRESSER FOOT		*		1
23	12112702	NEEDLE THREAD PRESSER SPRING B				1
24	12112504	NEEDLE THREAD PRESSER PLATE C				1
25	12112603	DIFFERENTIAL FEED CAM				1
26	R4300J6DE0A	THROAT PLATE				1
27	11882206	MAIN FEED DOG				1
28	R4200J6DD00	THROAT PLATE				1
29	R4300J6EE00	THROAT PLATE				1
30	11882206	MAIN FEED DOG				1
31	11885100	DIFFERENTIAL FEED DOG				1
32	11876364	PRESSER FOOT ASM.				1
33	11873007	PRESSER FOOT		*		1

HOW TO MAKE USE OF THIS PARTS LIST

1.As to "#01" and "#02" refer to the "Note" given at the bottom of the respective pages.

2.Codes on the "Qty" column

- Each numeral indicates the number of parts required.
- "0.1" and "2.5" indicate the length (in meters) of the respective parts.

3.Parentheses mean that the corresponding part is a subpart that constructs an assembly part.

4.Dotted lines on the Figures indicate assembly parts.

1. リストページの# 0 1、# 0 2の印は、ページ下の"注記"の説明を参照下さい。
2. 数量欄の数字は、個数を表し、0. 1、2. 5等の数値は、長さ（単位メートル）を表します。
3. 数量欄の（ ）は、組部品を構成している子部品であることを意味します。
4. イラストページの-----枠は、組構成であることを意味します。

NUMERICAL INDEX OF PARTS

PART NO	PAGE	REF NO.	PART NO	PAGE	REF NO.
11597101	2	18	R4200J6DD00	2	34
11792900	2	9	R4200J6DD00	4	28
11873007	2	28	R4200J6DD0A	4	15
11873007	4	33	R4200J6DD0C	2	15
11874807	2	36	R4200J6ED0A	4	19
11876067	2	8	R4200J6FD00	4	1
11876265	4	3	R4300J6DE00	2	23
11876364	2	21	R4300J6DE0A	4	26
11876364	4	32	R4300J6EE00	4	29
11876463	2	26	R4300J6FE0B	2	32
11876463	4	7	R4300J6FE0B	4	5
11882008	2	10			
11882206	2	24			
11882206	4	30			
11883303	2	29			
11885001	2	11			
11885100	2	25			
11885100	4	31			
11885605	2	30			
11886207	2	19			
11887007	2	12			
11898905	2	2			
11899002	2	3			
11992104	2	37			
11992153	2	35			
12104709	2	40			
12105557	2	42			
12112504	2	20			
12112504	4	24			
12112603	2	17			
12112603	4	25			
12112702	2	16			
12112702	4	23			
13132006	2	33			
13132006	4	6			
13138359	2	38			
13150602	2	43			
B1509804C0A	2	27			
B1509804C0A	4	8			
MAL121000A0	2	41			
MDC100B0800	2	13			
MDC270B0900	2	39			
MDC270B1400	2	31			
R4100J6AC00	2	14			
R4200J6AC00	2	1			