

MODEL : AMS-210DHL6350/AL6

List No : 1301-00

# PARTS LIST

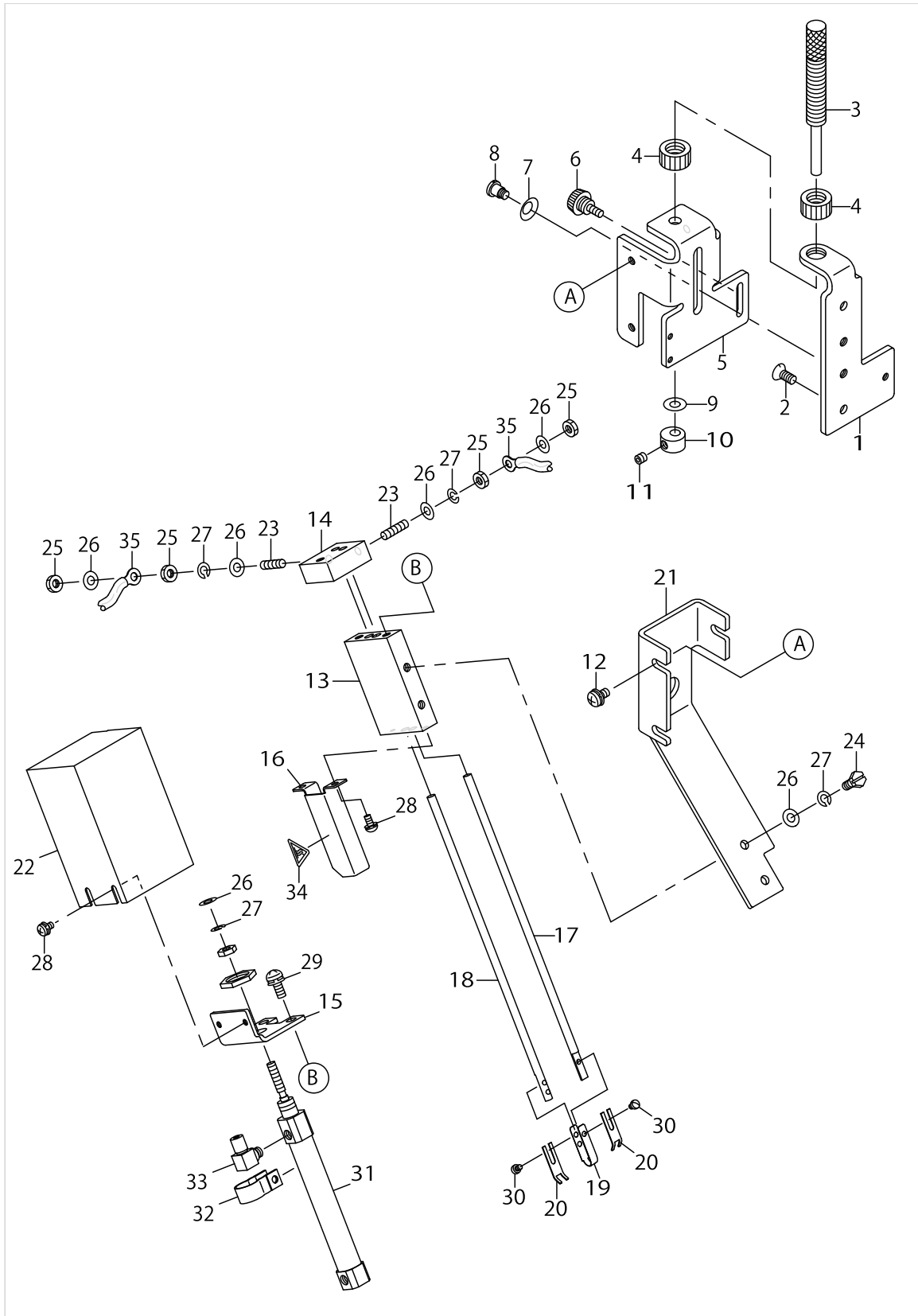
Published:09/10/2017

## CONTENTS

---

UPPER HOT-WIRE COMPONENTS .....	1
LOWER HOT-WIRE COMPONENTS.....	3
NEEDLE THREAD FEEDER COMPONENTS.....	5
SOLENOID VALVE & OTHER COMPONENTS (1).....	7
SOLENOID VALVE & OTHER COMPONENTS (2).....	9
ELECTRICAL EQUIPMENT COMPONENTS .....	11
HOW TO MAKE USE OF THIS PARTS LIST .....	13

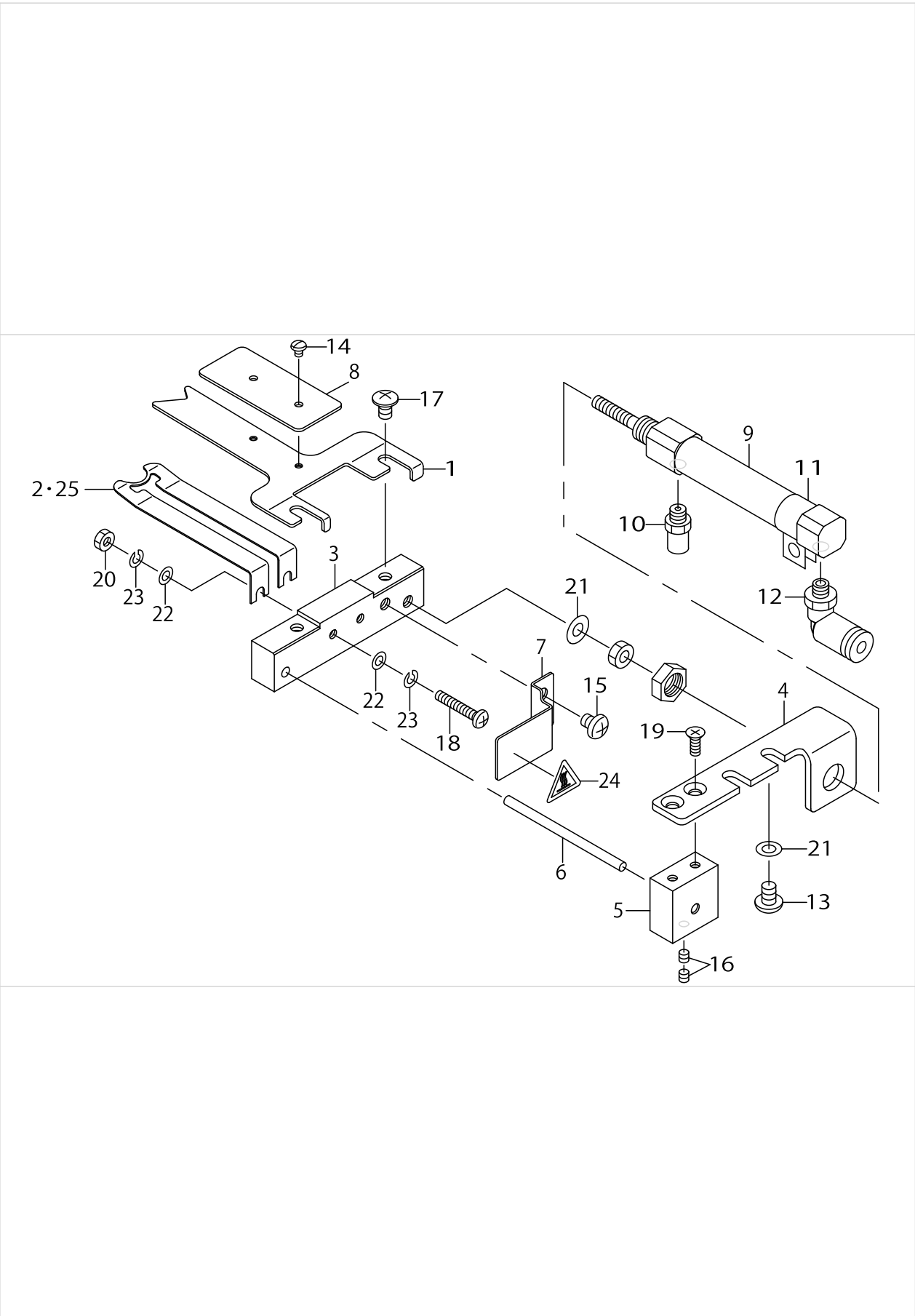
UPPER HOT-WIRE COMPONENTS



UPPER HOT-WIRE COMPONETNS

No.	Parts No.	Parts name	Remarks	Level	Cons	Qty
1	D1015D10N0H	ADJUST PLATE				1
2	SS2111010TP	SCREW 11/64-40 L=9.5				2
3	12114716	PRESSER REGULATOR SCREW				1
4	12114807	PRESSER REGULATOR NUT				2
5	D1001D10N0H	FIXED PLATE				1
6	B2549372000	CLAMP SCREW A				1
7	B3125155000	DISK SPRING				2
8	SD0550451SP	HINGE SCREW				2
9	WP0531001SC	WASHER				1
10	B3418245000	SPRING HOLDER				1
11	SS8110422TP	SCREW 11/64-40 L=4				1
12	SL4040891SC	SCREW M4 L=8				3
13	D4001D10P0P	SLIDE SHAFT GUIDE				1
14	D4002D10P0P	HEATER SHAFT FIXED BASE				1
15	D4003D10P0P	CYLINDER FITTING BASE				1
16	D4004D10P0P	HOT-WIRE PROTECT COVER				1
17	D4005D10P0P	HOT-WIRE SHAFT				1
18	D4006D10P0P	HOT-WIRE				1
19	D4007D10P0P	HOT-WIRE PLATE				1
20	D4008D10P0P	HOT-WIRE GUIDE PLATE				2
21	D4009D10P0P	UPPER HOT-WIRE FITTING PLATE				1
22	D4010D10P0P	UPPER HOT-WIRE COVER				1
23	SM8041552TP	SCREW M4 L=15				2
24	SM9041050SC	SCREW M4X0.7 L=10				2
25	NM6040003SC	NUT M4				4
26	WP0430801SC	WASHER 4.3X9X0.8				7
27	WS0410002KN	SPRING WASHER				5
28	SL4030691SC	SCREW M3X6				4
29	SL4041091SC	SCREW M4 L=10				2
30	SS7060310SP	SCREW 3/32-56 L=3				3
31	PA1004510A0	AIR CYLINDER				1
32	PX5000500A0	BRACKET				1
33	PJ046052503	HOSE ELBOW				2
34	CM300300001	SEAL				1
35	D5021D10NAH	HEATER CORD ASM.				2

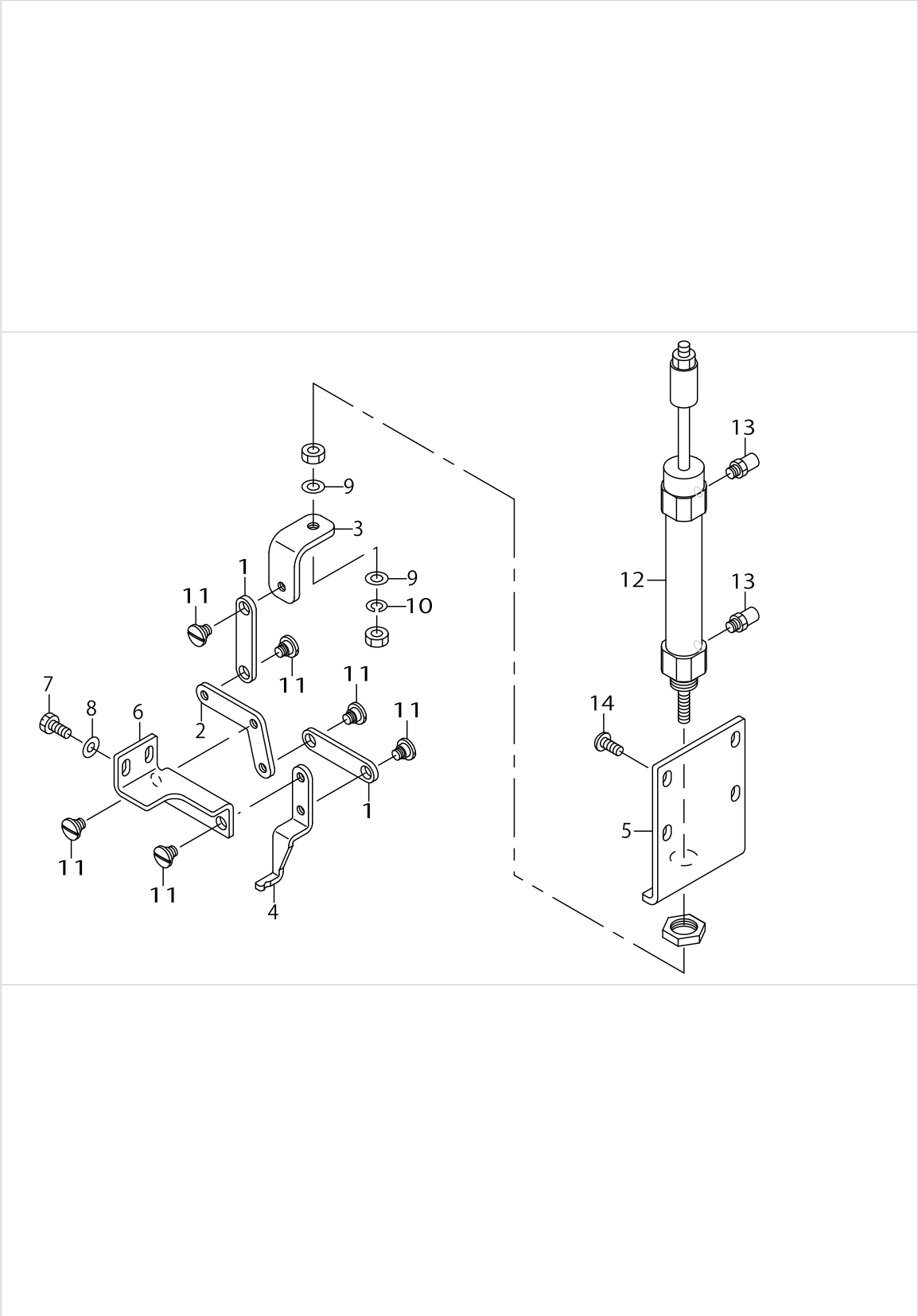
LOWER HOT-WIRE COMPONENTS



LOWER HOT-WIRE COMPONENTS

No.	Parts No.	Parts name	Remarks	Level	Cons	Qty
1	D4017D10P0P	LOWER THREAD FEEDER				1
2	D4018D10P0P	LOWER HOT-WIRE				1
3	D4019D10P0P	THREAD TRIMMER BASE				1
4	D2001D10N0H	CYLINDER STAY				1
5	D2003D10N0H	GUIDE BASE				1
6	D2004D10N0H	GUIDE BAR				1
7	D2005D10N0H	COVER				1
8	D2007D10N0H	INSULATING PLATE G				1
9	PA1003024A0	AIR CYLINDER				1
10	PJ032052503	HOSE NIPPLE				1
11	PX5000500A0	BRACKET				1
12	PJ304040504	ELBOW UNION				1
13	SS4110615SP	SCREW 11/64-40 L=6				2
14	SS4060310SP	SCREW 3/32-56 L=2.5				2
15	SM4040501SN	SCREW M4X0.7 L=5				1
16	SM8030302TP	SCREW M3X0.5 L=3				2
17	SM0040601SC	SCREW M4X0.7 L=6				2
18	SM4031851SR	SCREW				2
19	SM1030801SC	SCREW M3 L=8				2
20	NM6030001SC	NUT M3				2
21	WP0430800SC	WASHER M4				3
22	WP0320500SC	WASHER M3				4
23	WS0310002KN	SPRING WASHER M3				4
24	CM300300001	SEAL				1
25	D4018D10P0PA	LOWER HOT-WIRE	OPTIONAL PARTS			1

NEEDLE THREAD FEEDER COMPONENTS

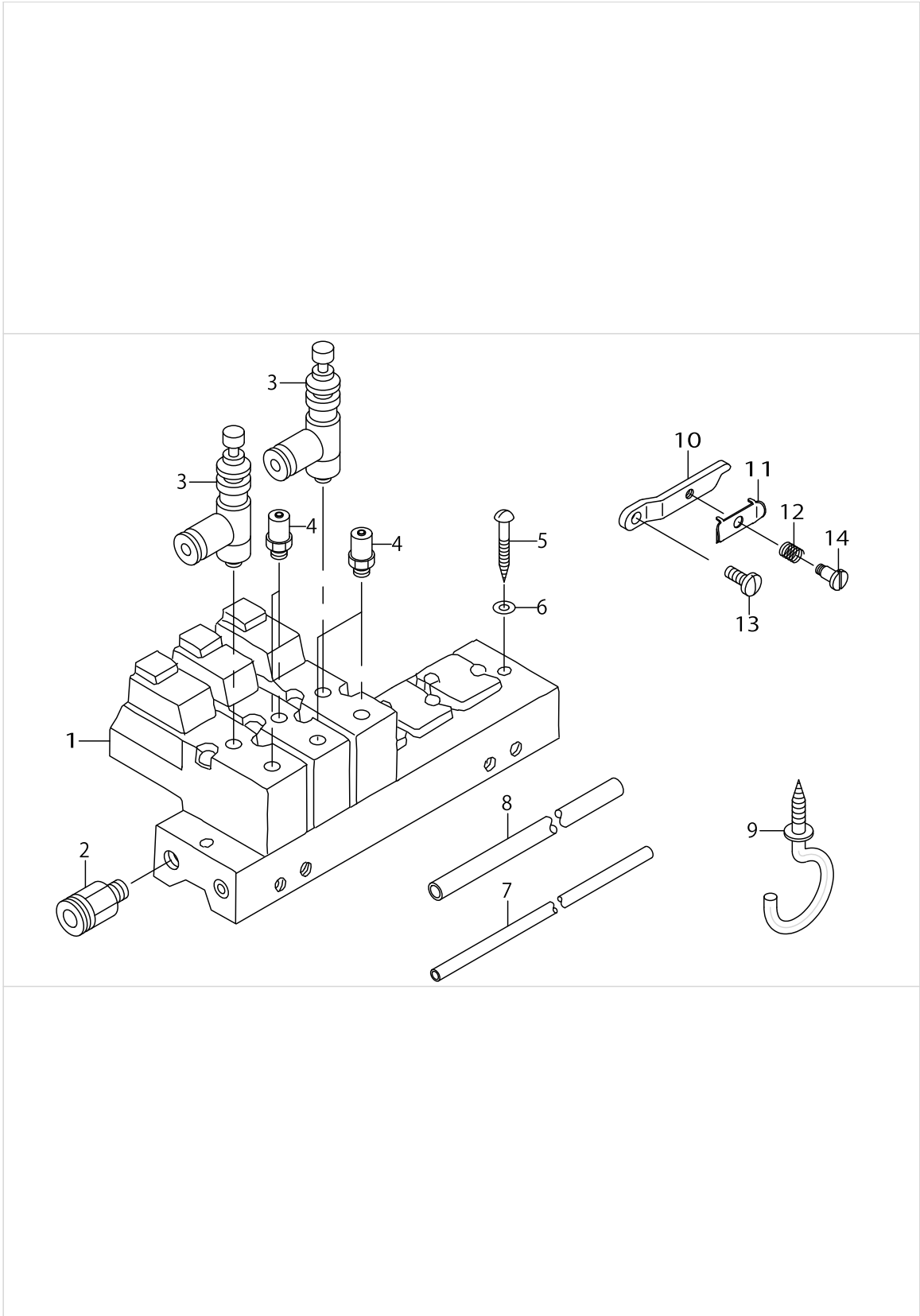


NEEDLE THREAD FEEDER COMPONENTS

No.	Parts No.	Parts name	Remarks	Level	Cons	Qty
1	D4011D10P0P	CONNECTING ARM				2
2	D4012D10P0P	V FORM CONNECTING ARM				1
3	D4013D10P0P	CYLINDER CONNECTING ARM				1
4	D4014D10P0P	UPPER THREAD EXORCIZE				1
5	D4015D10P0P	CYLINDER STAY				1
6	D4016D10P0P	FITTING BASE				1
7	SS9111010SP	SCREW 11/64-40 L=9.5				2
8	WP0450801SD	WASHER 4.5X10X0.8				2
9	WP0531001SC	WASHER				2
10	WS0510002KN	SPRING WASHER				1
11	SD0640271TP	HINGE SCREW				6
12	PA1604003A0	AIR CYLINDER				1
13	PJ032052503	HOSE NIPPLE				2
14	SS4111015SP	SCREW 11/64-40 L=10				4



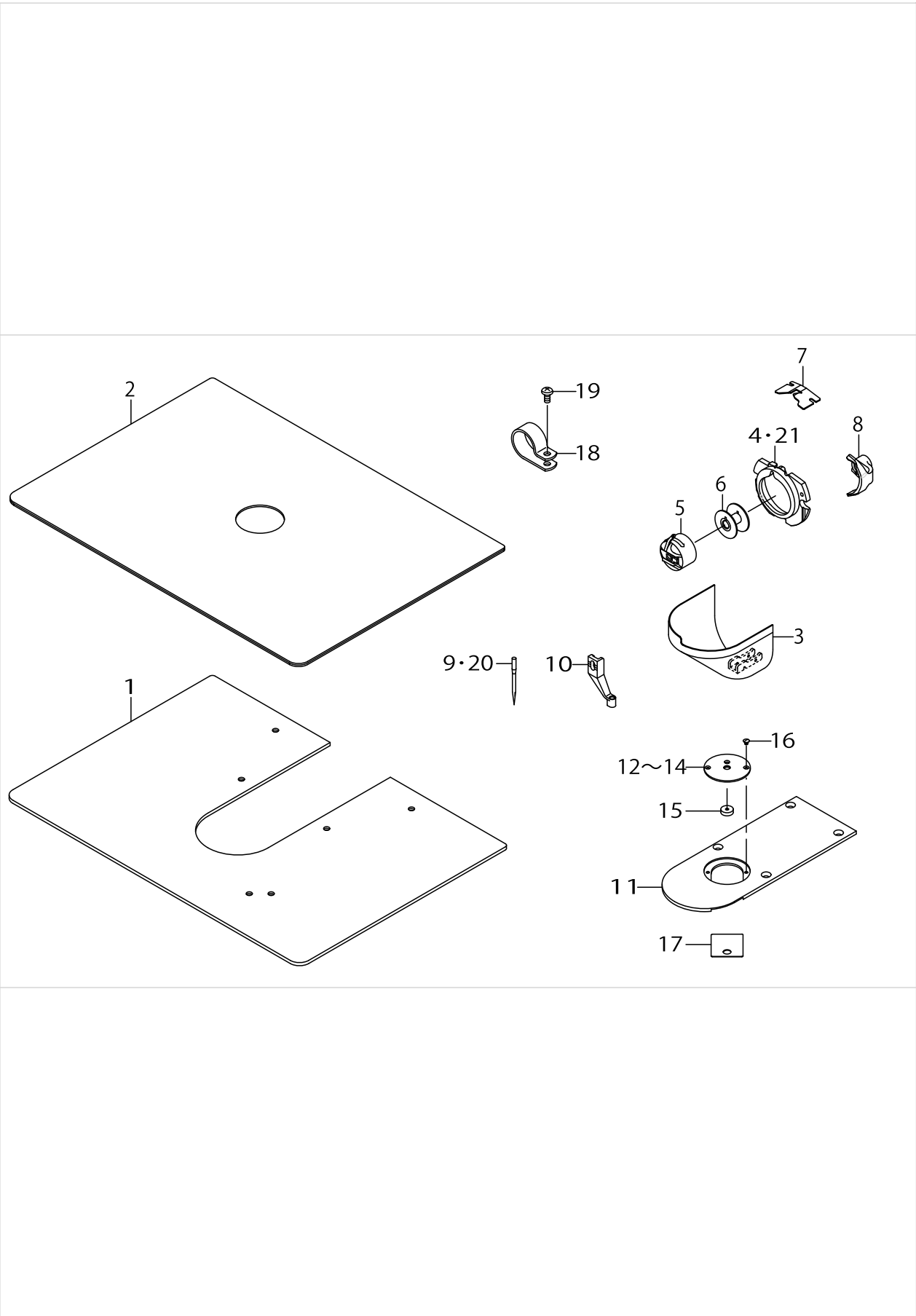
SOLENOID VALVE & OTHER COMPONENTS (1)



## SOLENOID VALVE &amp; OTHER COMPONENTS (1)

No.	Parts No.	Parts name	Remarks	Level	Cons	Qty
1	PV0351240B0	SOLENOID VALVE ASM.				1
2	PJ301065103	HALF UNION 6XPT1/8				1
3	PF070501000	PRESSURE DECREASING VALVE				2
4	PJ032052503	HOSE NIPPLE				4
5	SK3312500SE	WOOD SCREW D=3.1 L=25				2
6	WP0320500SC	WASHER M3				2
7	BT0400251EB	URETHANE HOSE, BLACK				7.6
8	BT0600401EB	TUBE				0.8
9	MAT81163T00	CORD HOLDER				1
10	B1145210000	INSTALLING BASE				1
11	10129104	THREAD PRESSER PLATE				1
12	B1132521000	THREAD PRESSER PLATE SPRING				1
13	SS7090910SP	SCREW 9/64-40 L= 8.5				1
14	SD0380551SL	HINGE SCREW D= 3.80 H= 5.5				1

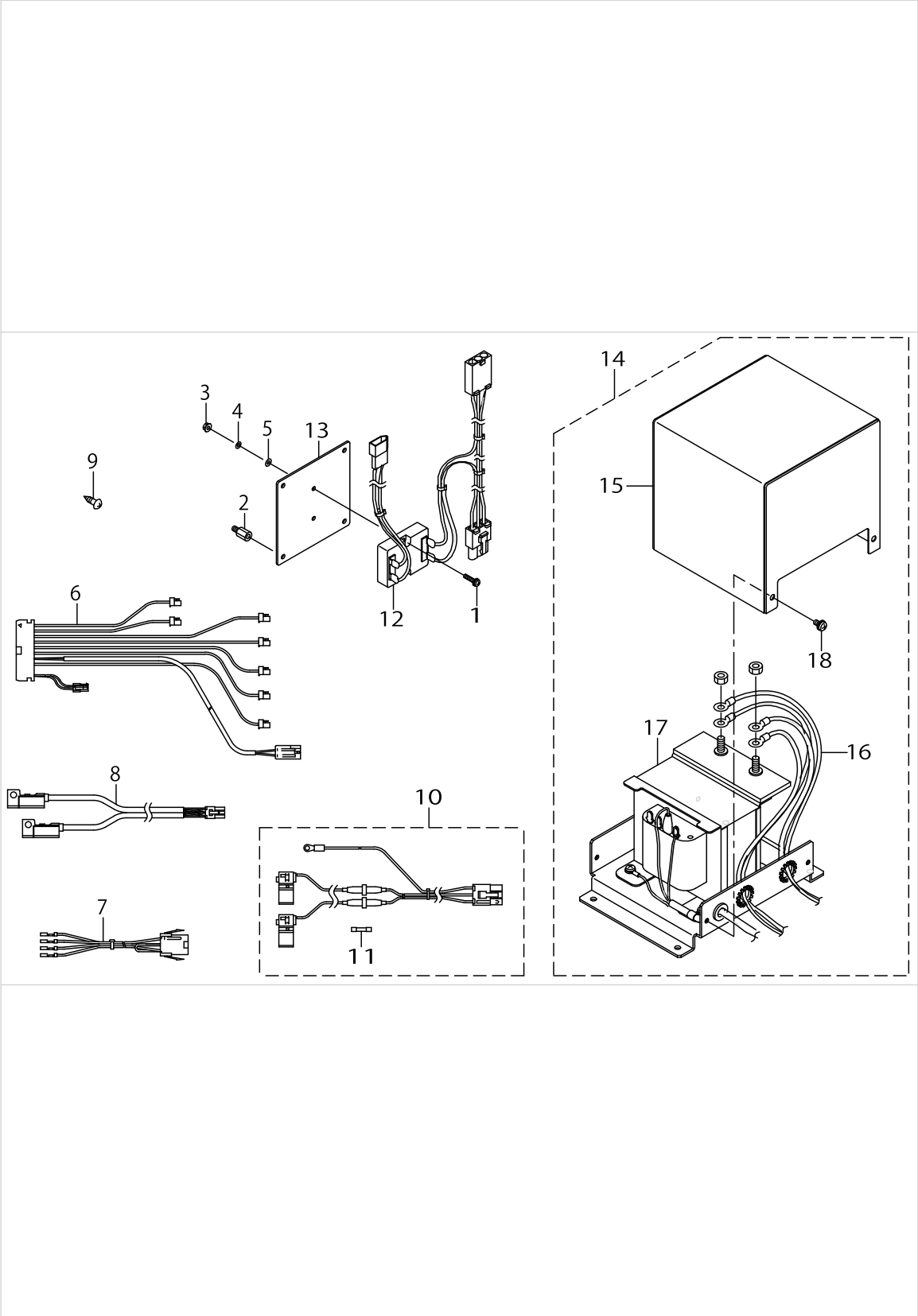
SOLENOID VALVE & OTHER COMPONENTS (2)



## SOLENOID VALVE &amp; OTHER COMPONENTS (2)

No.	Parts No.	Parts name	Remarks	Level	Cons	Qty
1	D4005D10N0H	NEEDLE PLATE SUPPORT COVER(AL)				1
2	D4006D10N0H	COVER SHEET				1
3	D4007D10N0H	CYLINDER ARM CAP				1
4	D4008D10NAH	SHUTTLE RACE RING ASM.,H				1
5	B1828210DAC	BOBBIN CASE ASM.				1
6	B1806210D0A	BOBBIN				1
7	B1815210D0A	SPRING				1
8	D4009D10N0H	SHUTTLE DRIVER (FOR #8)				1
9	MDP170B2600	NEEDLE DPX17 #26				1
10	B1601210D0CA	INTERMEDIATE PRESSER C				1
11	D4001D10N0H	NEEDLE PLATE				1
12	D4002D10N0H	NEEDLE HOLE GUIDE D=4.5				1
13	D4002D10N0K	NEEDLE HOLE GUIDE D=3.5	OPTIONAL PARTS			1
14	D4021D10P0P	ELLIPSE NEEDLE HOLE GUIDE	OPTIONAL PARTS			1
15	D4004D10N0H	HOT-WIRE SUPPORT				1
16	SS2060320SP	SCREW 3/32-56 L= 3.2				3
17	D4003D10N0H	INSULATING PLATE F				1
18	HX00150000M	CABLE CLIP				3
19	SS4110915SP	SCREW 11/64-40 L=9				3
20	MDP170B2500	NEEDLE DPX17 #25	OPTIONAL PARTS			1
21	B1817210DAE	SHUTTLE RACE RING ASM.,E	OPTIONAL PARTS			1

ELECTRICAL EQUIPMENT COMPONENTS



ELECTRICAL EQUIPMENT COMPONENTS

No.	Parts No.	Parts name	Remarks	Level	Cons	Qty
1	SL4031481SC	SCREW M3 X 14				2
2	HX003390000	STUD				4
3	NM6030001SC	NUT M3				2
4	WS0310002KN	SPRING WASHER M3				2
5	WP0320500SC	WASHER M3				2
6	D5001D10PAP	SOLENOID VALVE CABLE A ASM.				1
7	D5004D10PAP	SENSOR RELAY CORD				1
8	D5011D10NAH	CYLINDER SENSOR ASM.				1
9	SK3451601SC	WOOD SCREW				4
10	D5017D10NAHA	HEATER POWER SUPPLY CORD ASM.				1
11	HF001400100	FUSE				2
12	D5026D10NAH	HEATER RELAY ASM.				1
13	D5025D10N0H	HEATER RELAY INSTALLING PLATE				1
14	D5020D10NAH	HEATER TRANSFORMER COMPL.				1
15	G5604341000	TRANSFORMER COVER				1
16	D5021D10NAH	HEATER CORD ASM.				4
17	D5022D10NAH	HEATER TRANSFORMER ASM.				1
18	SL4040891SC	SCREW M4 L=8				4

## HOW TO MAKE USE OF THIS PARTS LIST

1.As to "#01" and "#02" refer to the "Note" given at the bottom of the respective pages.

2.Codes on the "Qty" column

- Each numeral indicates the number of parts required.
- "0.1" and "2.5" indicate the length (in meters) of the respective parts.

3.Parentheses mean that the corresponding part is a subpart that constructs an assembly part.

4.Dotted lines on the Figures indicate assembly parts.

1. リストページの# 0 1、# 0 2の印は、ページ下の"注記"の説明を参照下さい。
2. 数量欄の数字は、個数を表し、0. 1、2. 5等の数値は、長さ（単位メートル）を表します。
3. 数量欄の（ ）は、組部品を構成している子部品であることを意味します。
4. イラストページの-----枠は、組構成であることを意味します。

# NUMERICAL INDEX OF PARTS

PART NO	PAGE	REF NO.	PART NO	PAGE	REF NO.	PART NO	PAGE	REF NO.
10129104	8	11	D4012D10P0P	6	2	SD0640271TP	6	11
12114716	2	3	D4013D10P0P	6	3	SK3312500SE	8	5
12114807	2	4	D4014D10P0P	6	4	SK3451601SC	12	9
B1132521000	8	12	D4015D10P0P	6	5	SL4030691SC	2	28
B1145210000	8	10	D4016D10P0P	6	6	SL4031481SC	12	1
B1601210D0CA	10	10	D4017D10P0P	4	1	SL4040891SC	2	12
B1806210D0A	10	6	D4018D10P0P	4	2·25	SL4040891SC	12	18
B1815210D0A	10	7	D4018D10P0PA	4	2·25	SL4041091SC	2	29
B1817210DAE	10	4·21	D4019D10P0P	4	3	SM0040601SC	4	17
B1828210DAC	10	5	D4021D10P0P	10	12~14	SM1030801SC	4	19
B2549372000	2	6	D5001D10PAP	12	6	SM4031851SR	4	18
B3125155000	2	7	D5004D10PAP	12	7	SM4040501SN	4	15
B3418245000	2	10	D5011D10NAH	12	8	SM8030302TP	4	16
BT0400251EB	8	7	D5017D10NAHA	12	10	SM8041552TP	2	23
BT0600401EB	8	8	D5020D10NAH	12	14	SM9041050SC	2	24
CM300300001	2	34	D5021D10NAH	2	35	SS2060320SP	10	16
CM300300001	4	24	D5021D10NAH	12	16	SS2111010TP	2	2
D1001D10N0H	2	5	D5022D10NAH	12	17	SS4060310SP	4	14
D1015D10N0H	2	1	D5025D10N0H	12	13	SS4110615SP	4	13
D2001D10N0H	4	4	D5026D10NAH	12	12	SS4110915SP	10	19
D2003D10N0H	4	5	G5604341000	12	15	SS4111015SP	6	14
D2004D10N0H	4	6	HF001400100	12	11	SS7060310SP	2	30
D2005D10N0H	4	7	HX00150000M	10	18	SS7090910SP	8	13
D2007D10N0H	4	8	HX003390000	12	2	SS8110422TP	2	11
D4001D10N0H	10	11	MAT81163T00	8	9	SS9111010SP	6	7
D4001D10P0P	2	13	MDP170B2500	10	9·20	WP0320500SC	4	22
D4002D10N0H	10	12~14	MDP170B2600	10	9·20	WP0320500SC	8	6
D4002D10N0K	10	12~14	NM6030001SC	4	20	WP0320500SC	12	5
D4002D10P0P	2	14	NM6030001SC	12	3	WP0430800SC	4	21
D4003D10N0H	10	17	NM6040003SC	2	25	WP0430801SC	2	26
D4003D10P0P	2	15	PA1003024A0	4	9	WP0450801SD	6	8
D4004D10N0H	10	15	PA1004510A0	2	31	WP0531001SC	2	9
D4004D10P0P	2	16	PA1604003A0	6	12	WP0531001SC	6	9
D4005D10N0H	10	1	PF070501000	8	3	WS0310002KN	4	23
D4005D10P0P	2	17	PJ032052503	4	10	WS0310002KN	12	4
D4006D10N0H	10	2	PJ032052503	6	13	WS0410002KN	2	27
D4006D10P0P	2	18	PJ032052503	8	4	WS0510002KN	6	10
D4007D10N0H	10	3	PJ046052503	2	33			
D4007D10P0P	2	19	PJ301065103	8	2			
D4008D10NAH	10	4·21	PJ304040504	4	12			
D4008D10P0P	2	20	PV0351240B0	8	1			
D4009D10N0H	10	8	PX5000500A0	2	32			
D4009D10P0P	2	21	PX5000500A0	4	11			
D4010D10P0P	2	22	SD0380551SL	8	14			
D4011D10P0P	6	1	SD0550451SP	2	8			