

MODEL : SC-901

List No : 1272-01

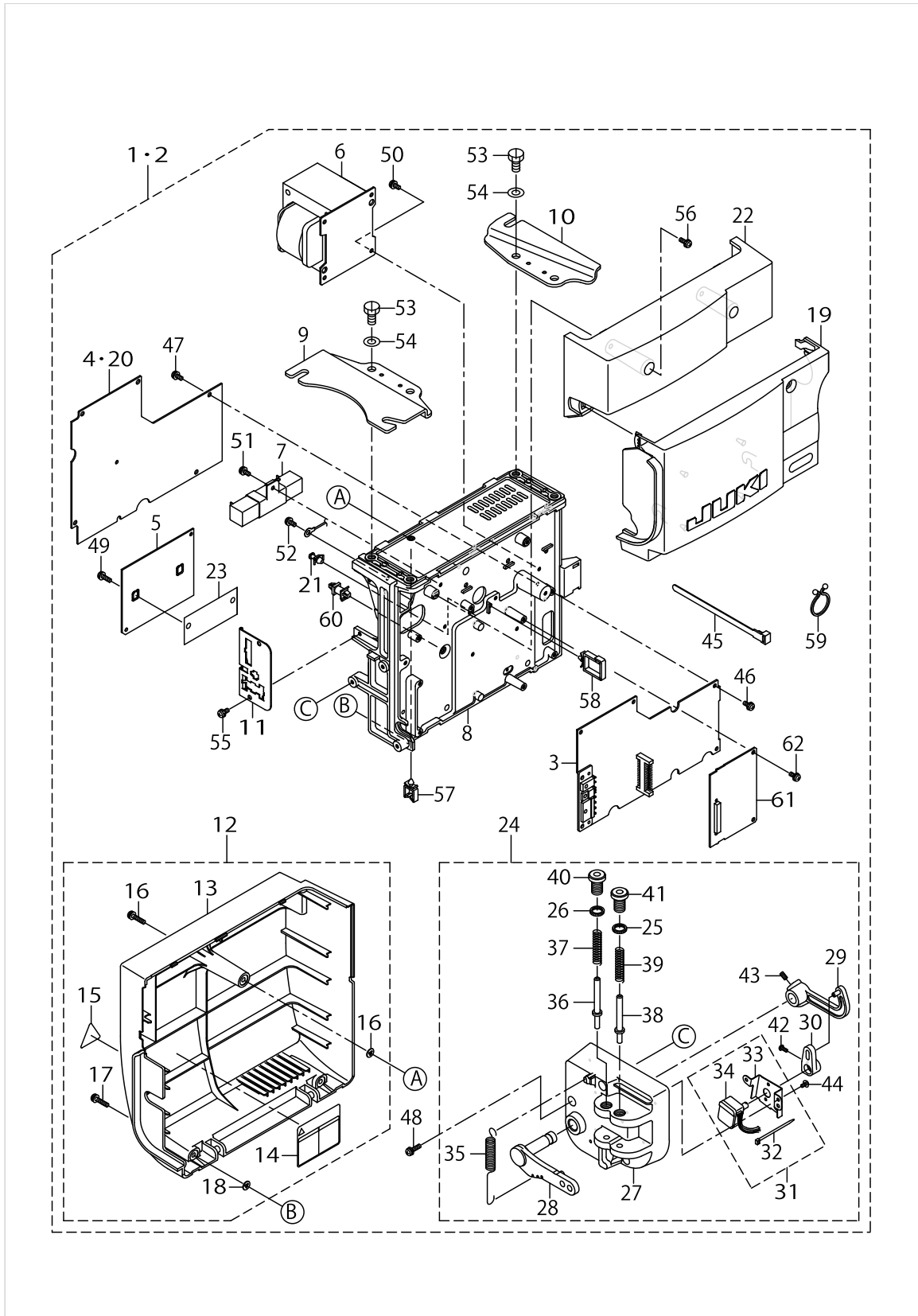
PARTS LIST

Published:09/10/2017

CONTENTS

PSC UNIT COMPONENTS	1
ACCESSORIE PART COMPONENTS.....	5
HOW TO MAKE USE OF THIS PARTS LIST	7

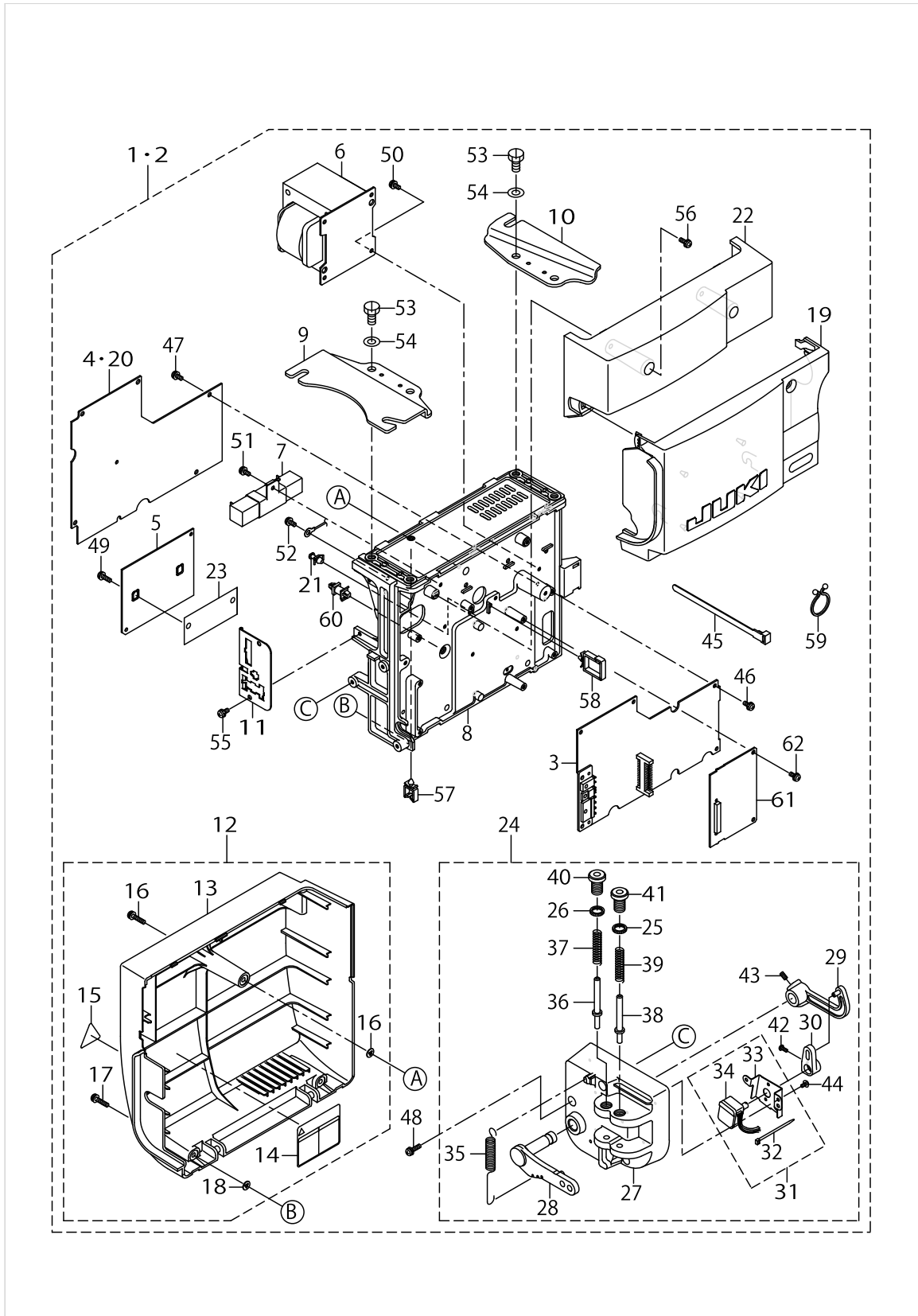
PSC UNIT COMPONENTS



PSC UNIT COMPONENTS

No.	Parts No.	Parts name	Remarks	Level	Cons	Qty
1	M2202472BA0	PSC UNIT,EXPORT PFL 220V 3	FOR PFL 200~240V 3φ			1
2	M2202472CA0	PSC UNIT,EXPORT PFL 220V 1	FOR PFL 200~240V 1φ			1
3	M8601471DAA	CTL CIRCUIT BOARD DA ASM.		*		1
4	M8602471BA0	PWR CIRCUIT BOARD B ASM.	FOR PFL 200~240V 3φ	*		1
5	M8603471AA0	DRV CIRCUIT BOARD A ASM.		*		1
6	M8501471BA0	POWER TRANSFORMER B ASM.		*		1
7	M8502461AA0	RESISTOR A ASM.		*		1
8	M3001471000	BOX FRAME		*		1
9	M3801471000	BOX BRACKET (L)		*		1
10	M3802471000	BOX BRACKET (R)		*		1
11	M3803471000	CONNECTOR INSTALLING PLATE		*		1
12	M3401471AAB	REAR COVER AB ASM.		*		1
13	M3401471A00	REAR COVER A		*		1
14	M7002471B00	LABEL		*		1
15	CM300100001	LABEL		*		1
16	SL4041891SC	SCREW M4 L=18		*		1
17	SL4041891SC	SCREW M4 L=18		*		2
18	M8002430000	STOPPER		*		3
19	M3201472CA0	FRONT COVER C ASM.		*		1
20	M8602471CA0	PWR CIRCUIT BOARD C ASM.	FOR PFL 200~240V 1φ	*		1
21	HX00147000E	CIRCUIT BOARD SPACER		*		1
22	M3202471000	TOP COVER		*		1
23	M8801471000	SEAT		*		1
24	M4001461BA0	PEDAL SENSOR B ASM.	FOR PFL	*		1
25	M2010110000	ADJUST NUT	FOR PFL	*		2
26	M2010110000	ADJUST NUT	FOR STANDARD	*		1
27	M4001461000	PEDAL SENSOR BASE		*		1
28	M4002461000	PEDAL LEVER		*		1
29	M4004461000	PEDAL RING		*		1
30	M4005461000	VOLUME LINK		*		1
31	M4006461AA0	SENSOR FIXED PLATE A ASM.		*		1
32	EA9500B0100	CABLE BAND		*		1
33	M4006461000	SENSOR INSTALLING PLATE		*		1
34	M8508461AA0	SENSOR A ASM.		*		1
35	M4007351000	FRONT SPRING		*		1
36	M4008351000A	SPRING SHAFT A		*		1
37	M4010351000	SPRING A	FOR STANDARD	*		1
38	M4009351000A	SPRING SHAFT B	FOR PFL	*		1
39	M4011351000	SPRING B	FOR PFL	*		2
40	M4012351000	ADJUST SCREW	FOR STANDARD	*		1
41	M4012351000	ADJUST SCREW	FOR PFL	*		2
42	SM4030801SF	SCREW M3X0.5 L=8		*		1
43	SM8040802TP	SCREW M4X8		*		2
44	SV4030601SR	SCREW M3 L=6		*		2
45	HX00292000A	CONNECTING PART		*		1
46	SL4041081SF	SCREW M4 L=10		*		6
47	SL4041081SF	SCREW M4 L=10		*		5

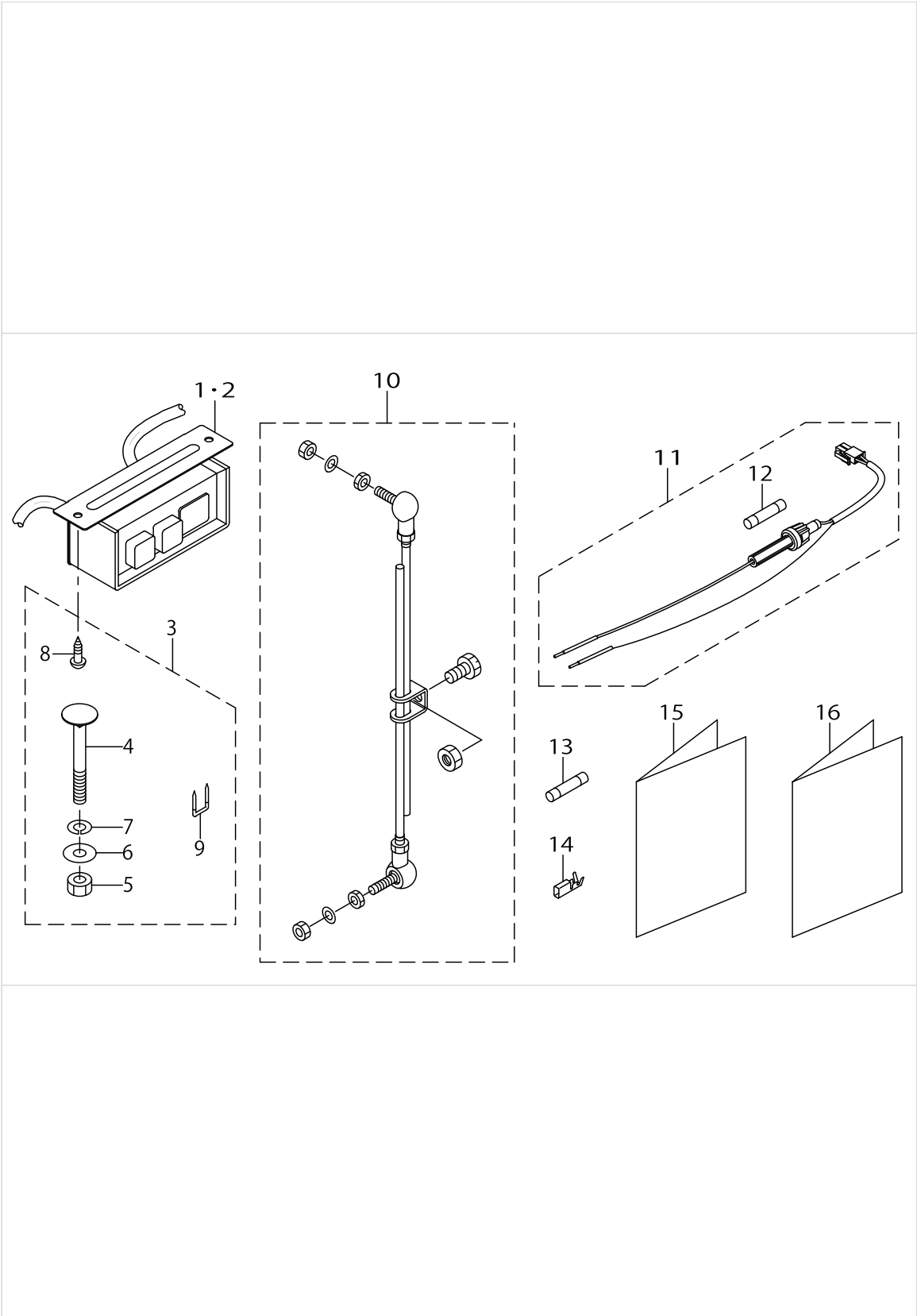
PSC UNIT COMPONENTS



PSC UNIT COMPONENTS

No.	Parts No.	Parts name	Remarks	Level	Cons	Qty
48	SL4041681SF	SCREW M4 L=16		*		3
49	SL4041481SC	SCREW M4X0.7 L=14		*		2
50	SL4041081SF	SCREW M4 L=10		*		4
51	SL4041081SF	SCREW M4 L=10		*		1
52	SL4041091SE	SCREW M4 L=10		*		3
53	SM9081620SE	SCREW M8 L=16		*		4
54	WP0841601SE	WASHER		*		4
55	SL4041081SC	SCREW M4 L=10		*		2
56	SL4041281SC	SCREW M4X0.7 L=12		*		2
57	HX00222000B	CABLE CLAMP		*		1
58	HX005110000	WIRE SADDLE		*		1
59	HX005100000	OMEGALOCK		*		2
60	HX00228000B	SPACER		*		1
61	M8606471AA0	OPC CIRCUIT BOARD A ASM.		*		1
62	SL4041081SF	SCREW M4 L=10		*		2

ACCESSORIE PART COMPONENTS



ACCESSORIE PART COMPONENTS

No.	Parts No.	Parts name	Remarks	Level	Cons	Qty
1	M6101471AA0	POWER SWITCH A ASM.	FOR PFL 200~240V 3φ			1
2	M6101471CA0	POWER SWITCH C ASM.	FOR PFL 200~240V 1φ			1
3	M4401471AA0	BOX ACCESSORIE PART A ASM.				1
4	MTSHJ100003	BOLT		*		3
5	NM6080002SC	NUT M8		*		3
6	WP0851846SC	WASHER 8.5X22.0X1.8		*		3
7	WS0820002KR	SPRING WASHER, M8		*		3
8	SK3512001SE	WOOD SCREW D=5.1 L=20		*		2
9	MA011532000	STAPLE		*		5
10	M4501471AA0	CONNECTING ROD A ASM.				1
11	M8525351AA0	LAMP FUSE HOLDER ASM., A				1
12	M9644110000	FUSE 8A		*		1
13	HF0079040P0	FUSE 4A				1
14	HK032040000	PIN TERMINAL				8
15	29326303	INSTRUCTION MANUAL (3 LANG.)				1
16	29334406	INSTRUCTION MANUAL (7 LANG.)				1

HOW TO MAKE USE OF THIS PARTS LIST

1.As to "#01" and "#02" refer to the "Note" given at the bottom of the respective pages.

2.Codes on the "Qty" column

- Each numeral indicates the number of parts required.
- "0.1" and "2.5" indicate the length (in meters) of the respective parts.

3.Parentheses mean that the corresponding part is a subpart that constructs an assembly part.

4.Dotted lines on the Figures indicate assembly parts.

1. リストページの# 0 1、# 0 2の印は、ページ下の"注記"の説明を参照下さい。
2. 数量欄の数字は、個数を表し、0. 1、2. 5等の数値は、長さ（単位メートル）を表します。
3. 数量欄の（ ）は、組部品を構成している子部品であることを意味します。
4. イラストページの-----枠は、組構成であることを意味します。

NUMERICAL INDEX OF PARTS

PART NO	PAGE	REF NO.	PART NO	PAGE	REF NO.
29326303	6	15	M8525351AA0	6	11
29334406	6	16	M8601471DAA	2	3
CM300100001	2	15	M8602471BA0	2	4·20
EA9500B0100	2	32	M8602471CA0	2	4·20
HF0079040P0	6	13	M8603471AA0	2	5
HK032040000	6	14	M8606471AA0	4	61
HX00147000E	2	21	M8801471000	2	23
HX00222000B	4	57	M9644110000	6	12
HX00228000B	4	60	MA011532000	6	9
HX00292000A	2	45	MTSHJ100003	6	4
HX005100000	4	59	NM6080002SC	6	5
HX005110000	4	58	SK3512001SE	6	8
M2010110000	2	26	SL4041081SC	4	55
M2202472BA0	2	1·2	SL4041081SF	2	62
M2202472CA0	2	1·2	SL4041081SF	4	62
M3001471000	2	8	SL4041091SE	4	52
M3201472CA0	2	19	SL4041281SC	4	56
M3202471000	2	22	SL4041481SC	4	49
M3401471A00	2	13	SL4041681SF	4	48
M3401471AAB	2	12	SL4041891SC	2	17
M3801471000	2	9	SM4030801SF	2	42
M3802471000	2	10	SM8040802TP	2	43
M3803471000	2	11	SM9081620SE	4	53
M4001461000	2	27	SV4030601SR	2	44
M4001461BA0	2	24	WP0841601SE	4	54
M4002461000	2	28	WP0851846SC	6	6
M4004461000	2	29	WS0820002KR	6	7
M4005461000	2	30			
M4006461000	2	33			
M4006461AA0	2	31			
M4007351000	2	35			
M4008351000A	2	36			
M4009351000A	2	38			
M4010351000	2	37			
M4011351000	2	39			
M4012351000	2	41			
M4401471AA0	6	3			
M4501471AA0	6	10			
M6101471AA0	6	1·2			
M6101471CA0	6	1·2			
M7002471B00	2	14			
M8002430000	2	18			
M8501471BA0	2	6			
M8502461AA0	2	7			
M8508461AA0	2	34			