

MODEL : SC-804

List No : 1246-02

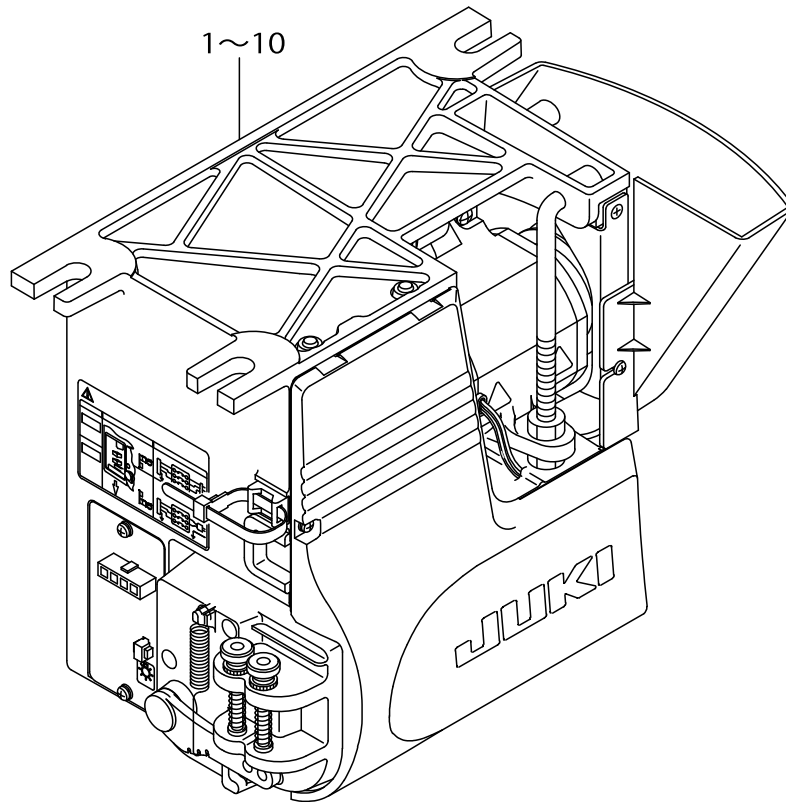
PARTS LIST

Published:09/10/2017

CONTENTS

STANDARD MOTOR COMBINATION LIST.....	1
PSC UNIT COMPONENTS (1)	3
PSC UNIT COMPONENTS (2)	5
ACCESSORIE PART COMPONENTS	9
CP-660 PANEL COMPONENTS.....	11
CP-60 PANEL COMPONENTS	13
HOW TO MAKE USE OF THIS PARTS LIST	15

STANDARD MOTOR COMBINATION LIST



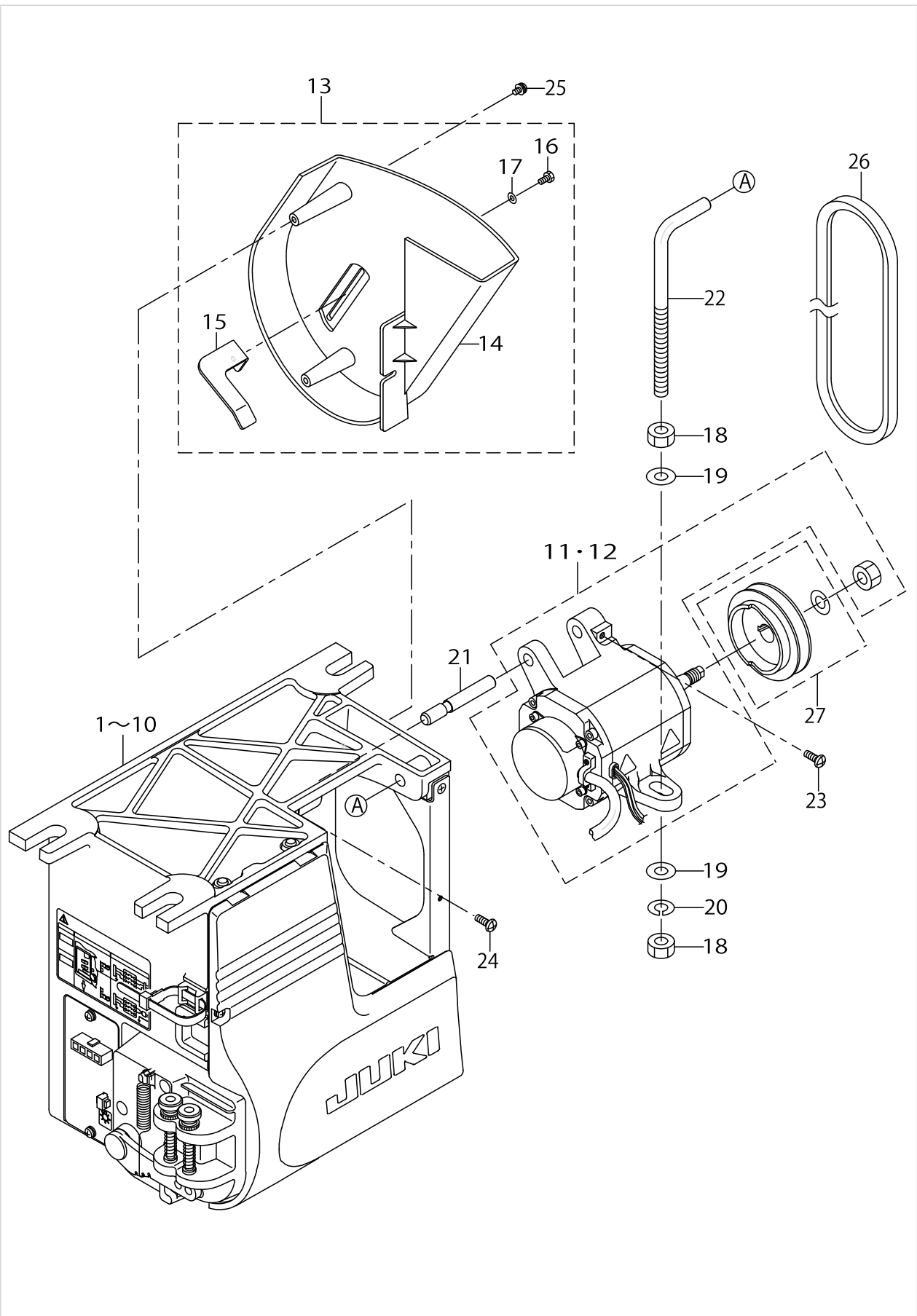
REF. NO.	PART NO.	BOX TYPE	EXPORT		JUS		CE	*OPTION
			3Ø 200~240V	1Ø 200~240V	3Ø 200~240V	1Ø 100~120V	1Ø 220~240V	A
1	M2012-464-BA0	BB	○					
2	M2112-464-BA0	BE	○					○
3	M2012-464-CA0	CB		○				
4	M2112-464-CA0	CE		○				○
5	M2012-464-DA0	DB					○	
6	M2112-464-DA0	DE					○	○
7	M2012-464-EA0	EB			○			
8	M2112-464-EA0	EE			○			○
9	M2012-464-FA0	FB				○		
10	M2112-464-FA0	FE				○		○

*OPTION A:ED-2,BOBBIN THREAD REMAINING AMOUNT DETECTION.
 *BOX TYPE IS DESCRIBED AFTER MODEL NAME IN RATING PLATE.

STANDARD MOTOR COMBINATION LIST

No.	Parts No.	Parts name	Remarks	Level	Cons	Qty
1	M2012464BA0	GENERAL. EXPORT P3-200VOS				1
2	M2112464BA0	GENERAL. EXPORT P3-200VOA				1
3	M2012464CA0	GENERAL. EXPORT P1-200VOS				1
4	M2112464CA0	GENERAL. EXPORT P1-200VOA				1
5	M2012464DA0	SC-804CEP1-230VOS				1
6	M2112464DA0	SC-804CEP1-230VOA				1
7	M2012464EA0	SC-804JUSP3-200VOS				1
8	M2112464EA0	SC-804JUSP3-200VOA				1
9	M2012464FA0	SC-804JUSP1-110VOS				1
10	M2112464FA0	SC-804JUSP1-110VOA				1

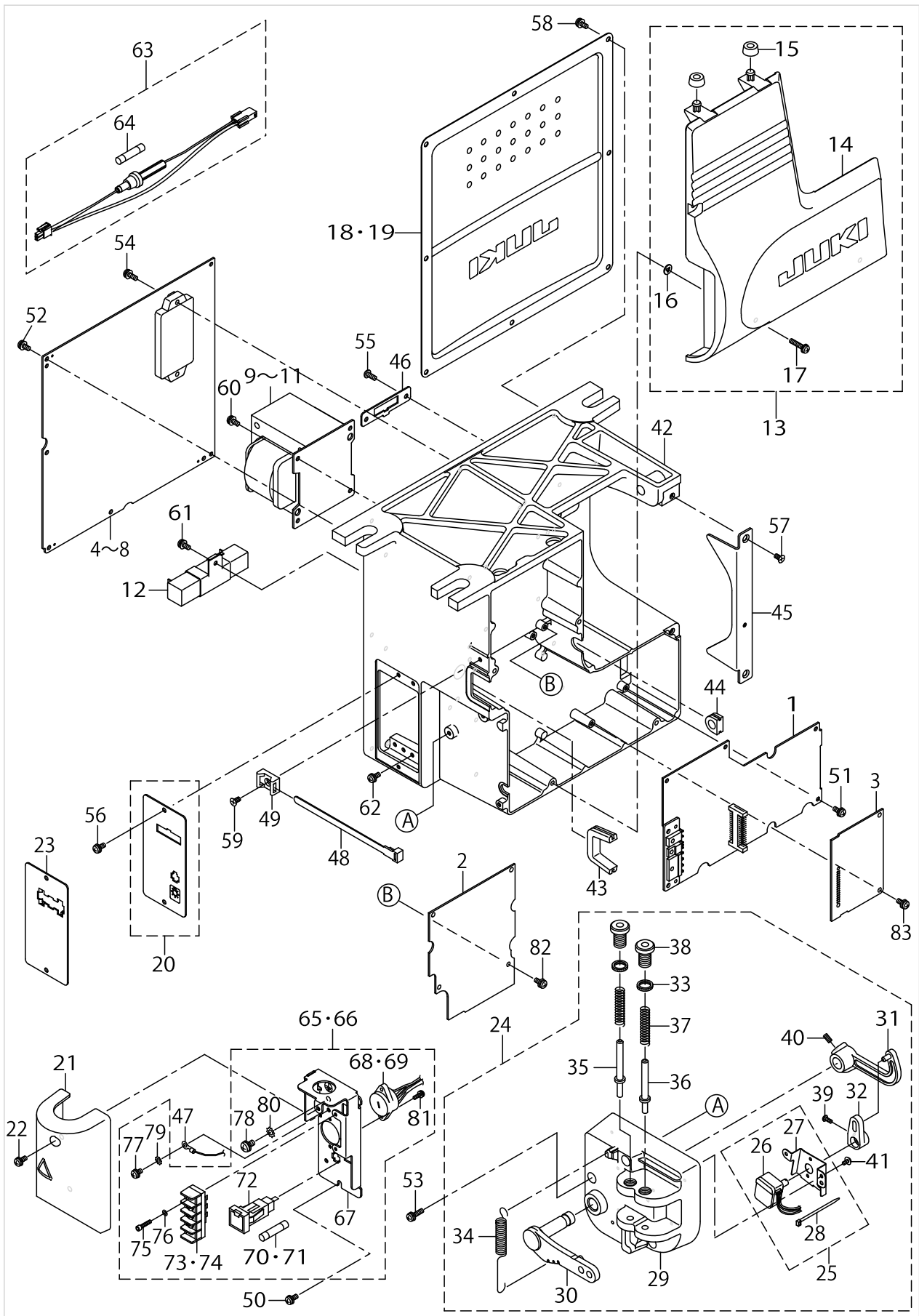
PSC UNIT COMPONENTS (1)



PSC UNIT COMPONENTS (1)

No.	Parts No.	Parts name	Remarks	Level	Cons	Qty
1	M2002464BA0	GENERAL. EXPORT P3-200VOS	FOR M2012-464-BA0			1
2	M2102464BA0	GENERAL. EXPORT P3-200VOA	FOR M2112-464-BA0			1
3	M2002464CA0	GENERAL. EXPORT P1-200VOS	FOR M2012-464-CA0			1
4	M2102464CA0	GENERAL. EXPORT P1-200VOA	FOR M2112-464-CA0			1
5	M2002464DA0	SC-804CEP1-230VOS	FOR M2012-464-DA0			1
6	M2102464DA0	SC-804CEP1-230VOA	FOR M2112-464-DA0			1
7	M2002464EA0	SC-804JUSP3-200VOS	FOR M2012-464-EA0			1
8	M2102464EA0	SC-804JUSP3-200VOA	FOR M2112-464-EA0			1
9	M2002464FA0	SC-804JUSP1-110VOS	FOR M2012-464-FA0			1
10	M2102464FA0	SC-804JUSP1-110VOA	FOR M2112-464-FA0			1
11	M6001461CA0	MOTOR ASM.,C	FOR GENERAL EXPORT			1
12	M6001461DA0	MOTOR ASM.,D	FOR CE & JUS			1
13	M3601461AA0	PULLEY COVER A ASM.				1
14	M3601461000	PULLEY COVER		*		1
15	M3602461000	BELT STOPPER		*		1
16	SM9040803SF	SCREW M4X8		*		1
17	WP0430801SE	WASHER 4.3X9X0.8		*		1
18	NM6100011SF	NUT M10				2
19	WP1052001SE	WASHER 10.5X21X2				2
20	WS1020002KR	SPRING WASHER, M10				1
21	M4201461000	MOTOR SUPPORT SHAFT				1
22	M4202461000	MOTOR SUPPORT BOLT				1
23	SM4051405SE	SCREW M5 L=14				1
24	SM4051405SE	SCREW M5 L=14				1
25	SL4040891SC	SCREW M4 L=8				3
26	MTJVH00390A	V-BELT, 39 INCH				1
27	MTSP0070AA0	MOTOR PULLEY ASM. P.C.D. 70				1

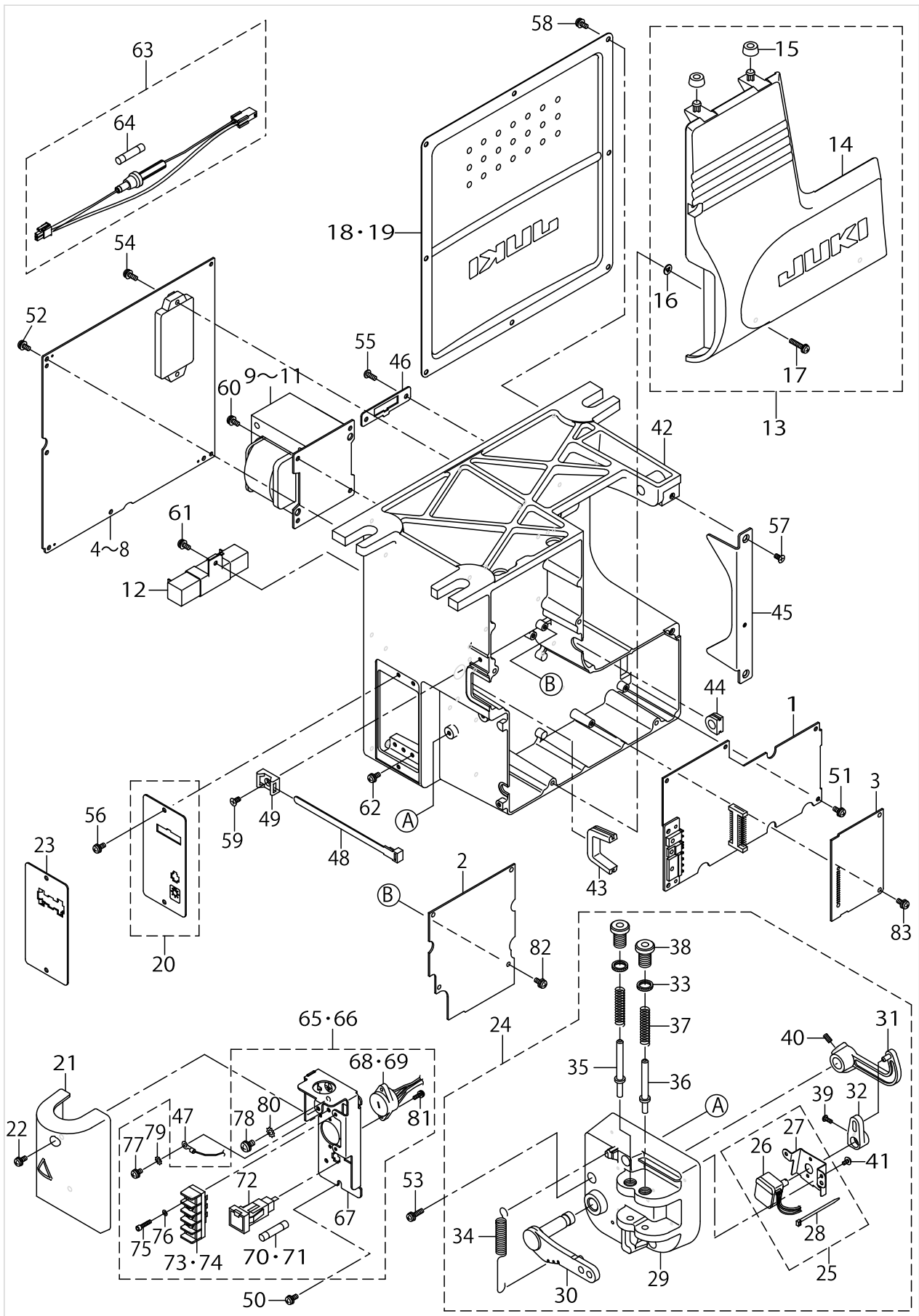
PSC UNIT COMPONENTS (2)



PSC UNIT COMPONENTS (2)

No.	Parts No.	Parts name	Remarks	Level	Cons	Qty
1	M8601471DAA	CTL CIRCUIT BOARD DA ASM.				1
2	M8601464AA0	AC5 CIRCUIT BOARD A ASM.				1
3	M8606461AA0	OP CIRCUIT BOARD ASM. A				1
4	M8604461AA0	PWR-U CIRCUIT BOARD A ASM.	FOR EXPORT 3-PHASE 200~240V			1
5	M8603461AA0	PWR-E CIRCUIT BOARD A ASM.	FOR EXPORT 1-PHASE 200~240V			1
6	M8605461AA0	PWR-C CIRCUIT BOARD A ASM.	FOR CE			1
7	M8603461BA0	PWR-S CIRCUIT BOARD B ASM.	FOR JUS 100~120V			1
8	M8604461BA0	PWR-U CIRCUIT BOARD B ASM.	FOR JUS 200~240V			1
9	M8501471BA0	POWER TRANSFORMER B ASM.	FOR 200V(EXCEPT CE)			1
10	M8501471CA0	POWER TRANSFORMER C ASM.	FOR JUS 100~120V			1
11	M8501471DA0	POWER TRANSFORMER D ASM.	FOR CE			1
12	M8502461AA0	RESISTOR A ASM.				1
13	M3201462CA0	BOX FRONT COVER C ASM.				1
14	M3201461000	FRONT COVER		*		1
15	M3202461000	BOX FRONT COVER SUPPORT RUBBER		*		2
16	M8002430000	STOPPER		*		3
17	SL4042091SC	SCREW M4X0.7 L=20		*		3
18	M3401461000	BOX REAR PANEL				1
19	M3401461BA0	BOX REAR COVER B ASM.	FOR CE,JUS			1
20	M3802461AA0	CONNECTOR FIXED PLATE A ASM.	FOR GENERAL EXPORT			1
21	M3806461AA0	TERMINAL BASE COVER A ASM.	FOR JUS			1
22	SL4041081SC	SCREW M4 L=10	FOR JUS			2
23	M3804461000	CONNECTOR FIXED PLATE(CE)	FOR CE			1
24	M4001461BA0	PEDAL SENSOR B ASM.				1
25	M4006461AA0	SENSOR INSTALLING PLATE A ASM.		*		1
26	M8508461AA0	SENSOR A ASM.		*		1
27	M4006461000	SENSOR INSTALLING PLATE		*		1
28	EA9500B0100	CABLE BAND		*		1
29	M4001461000	PEDAL SENSOR BASE		*		1
30	M4002461000	PEDAL LEVER		*		1
31	M4004461000	PEDAL RING		*		1
32	M4005461000	VOLUME LINK		*		1
33	M2010110000	ADJUST NUT		*		2
34	M4007351000	FRONT SPRING		*		1
35	M4008351000A	SPRING SHAFT A		*		1
36	M4009351000A	SPRING SHAFT B		*		1
37	M4011351000	SPRING B		*		2
38	M4012351000	ADJUST SCREW		*		2
39	SM4030801SF	SCREW M3X0.5 L=8		*		1
40	SM8040802TP	SCREW M4X8		*		2
41	SV4030601SR	SCREW M3 L=6		*		2
42	M3001461000	ELECTRICAL BOX				1
43	M3002461000	RUBBER BUSH A				1
44	M1014110000	CORD BUSH B				1
45	M3801461000	PULLEY COVER INSTALLING PLATE				1
46	M3803461000	MOTOR CONNECTOR FIXED PLATE				1
47	M8503461DA0	FG CORD D ASM.	FOR JUS			1

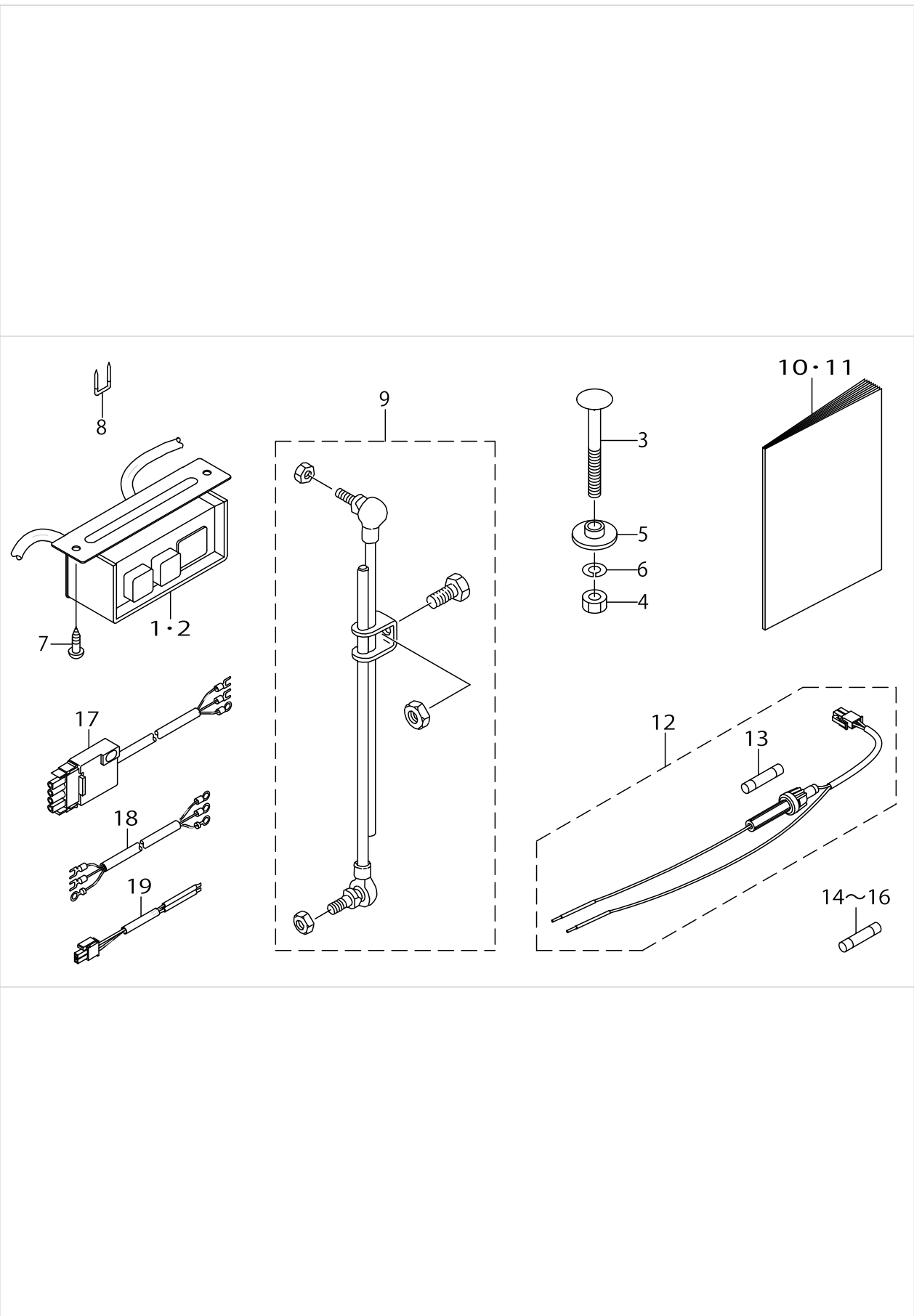
PSC UNIT COMPONENTS (2)



PSC UNIT COMPONENTS (2)

No.	Parts No.	Parts name	Remarks	Level	Cons	Qty
48	HX00292000A	CONNECTING PART				1
49	HX004540000	TIE MOUNT				1
50	SL4041081SF	SCREW M4 L=10	FOR JUS			2
51	SL4041081SF	SCREW M4 L=10				6
52	SL4041081SF	SCREW M4 L=10				5
53	SL4041681SF	SCREW M4 L=16				3
54	SL4041281SF	SCREW M4 L=12				2
55	SL4041081SF	SCREW M4 L=10				2
56	SL4041081SC	SCREW M4 L=10				2
57	SM1040801SC	SCREW M4X0.7 L=8				2
58	SL4041081SC	SCREW M4 L=10				8
59	SM1040801SC	SCREW M4X0.7 L=8				1
60	SL4041081SF	SCREW M4 L=10				4
61	SL4041081SF	SCREW M4 L=10				1
62	SL4041091SE	SCREW M4 L=10				4
63	M8511461AA0	LAMP FUSE A ASM.	FOR JUS			1
64	HF001400500	TIME LAG FUSE 5A	FOR JUS	*		1
65	M3805461BA0	TERMINAL BASE B ASM.	FOR JUS 100~120V			1
66	M3805461AA0	TERMINAL BASE A ASM.	FOR JUS 200~240V			1
67	M3805461000	TERMINAL BASE	FOR JUS	*		1
68	M8510461BA0	VOLTAGE SELECTOR B ASM.	FOR JUS 100~120V	*		1
69	M8510461AA0	VOLTAGE SELECTOR A ASM.	FOR JUS 200~240V	*		1
70	HF0079040P0	FUSE 4A	FOR JUS 100~120V	*		1
71	HF0079020P0	FUSE 2A	FOR JUS 100~120V	*		1
72	HF009511000	FUSE HOLDER	FOR JUS	*		1
73	HK04905003B	TERMINAL BASE	FOR JUS	*		1
74	HK04905002A	TERMINAL BASE 2P	FOR JUS	*		1
75	SM6031402TP	SCREW	FOR JUS	*		2
76	WS0310002KP	SPRING WASHER	FOR JUS	*		2
77	SL4040885SH	SCREW M4 L=8	FOR JUS	*		1
78	SL4051085SH	SCREW M5X10	FOR JUS	*		1
79	WT0430001KN	TOOTHED WASHER	FOR JUS	*		1
80	WT0530001KN	TOOTHED LOCK WASHER	FOR JUS	*		1
81	SL4031081SF	SCREW M3 L=10	FOR JUS	*		2
82	SL4041081SF	SCREW M4 L=10				4
83	SL4041081SF	SCREW M4 L=10				2

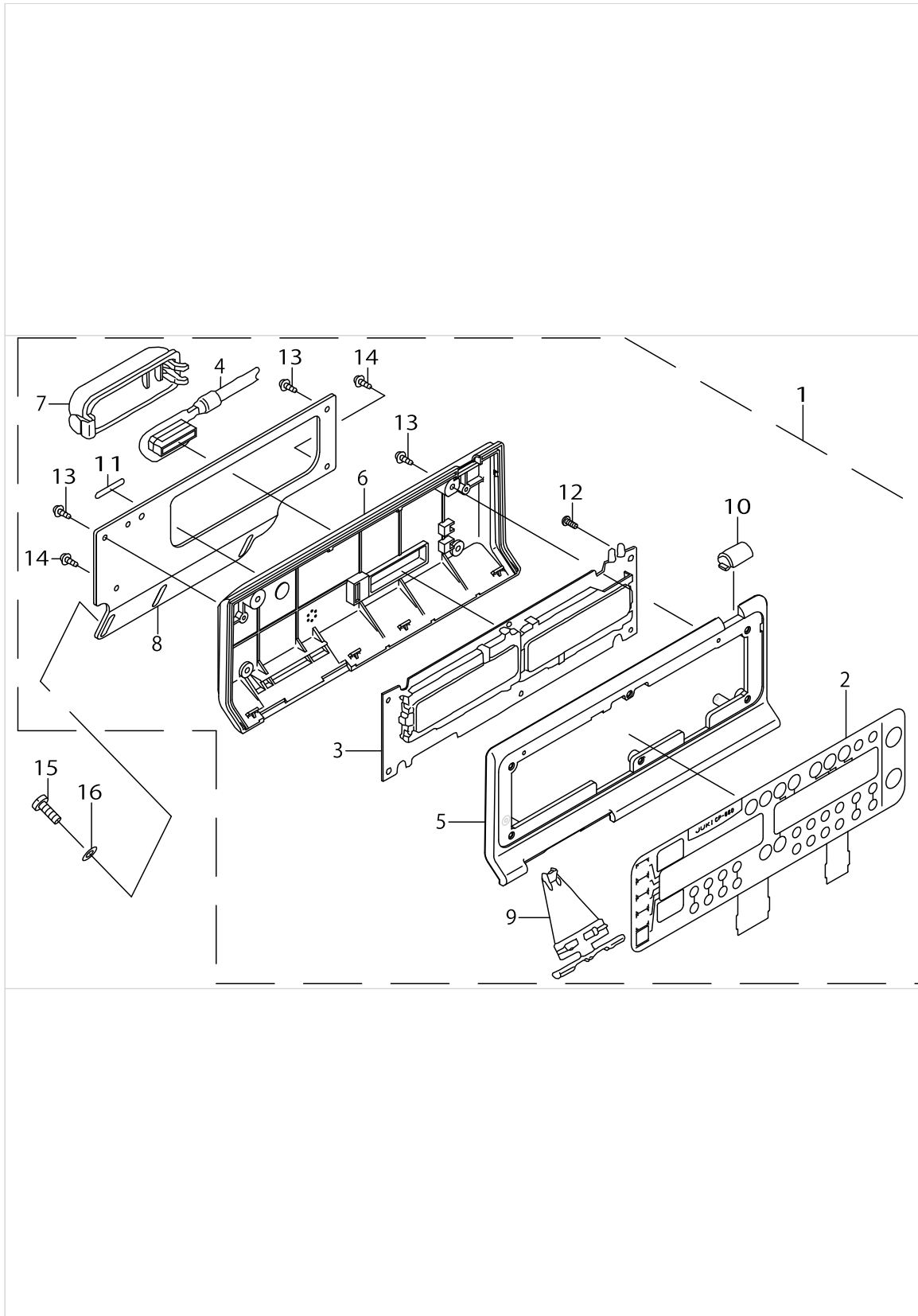
ACCESSORIE PART COMPONENTS



ACCESSORIE PART COMPONENTS

No.	Parts No.	Parts name	Remarks	Level	Cons	Qty
1	M6101461AA0	POWER SWITCH A ASM.	FOR 3-PHASE 200~240V			1
2	M6101461CA0	POWER SWITCH C ASM.	FOR 1-PHASE 200~240V			1
3	D8211555D00	BOLT				3
4	NM6080003SC	NUT M8				3
5	M4205461000	WASHER				3
6	WS0820002KR	SPRING WASHER, M8				3
7	SK3512001SF	WOOD SCREW				2
8	MAO11532000	CORD STAPLE				5
9	D7114555BAB	CONNECTING ROD ASM. (B)				1
10	29319506	SC-804 INSTRUCTION MANUAL				1
11	29319605	SC-804 INSTRUCTION MANUAL				1
12	M8525351AA0	LAMP FUSE HOLDER ASM., A				1
13	M9644110000	FUSE 8A		*		1
14	HF0079020P0	FUSE 2A	FOR 200~240V			1
15	HF0079040P0	FUSE 4A	FOR JUS 100~120V			1
16	HF0078020P0	FUSE 2A	FOR CE			1
17	M6105461DAA	PSC UNIT CABLE ASM.(CE)	FOR CE			1
18	M6102461DAA	AC INPUT CABLE ASM.(CE)	FOR CE			1
19	M8526351AA0	LAMP CORD ASM., A	FOR JUS			1

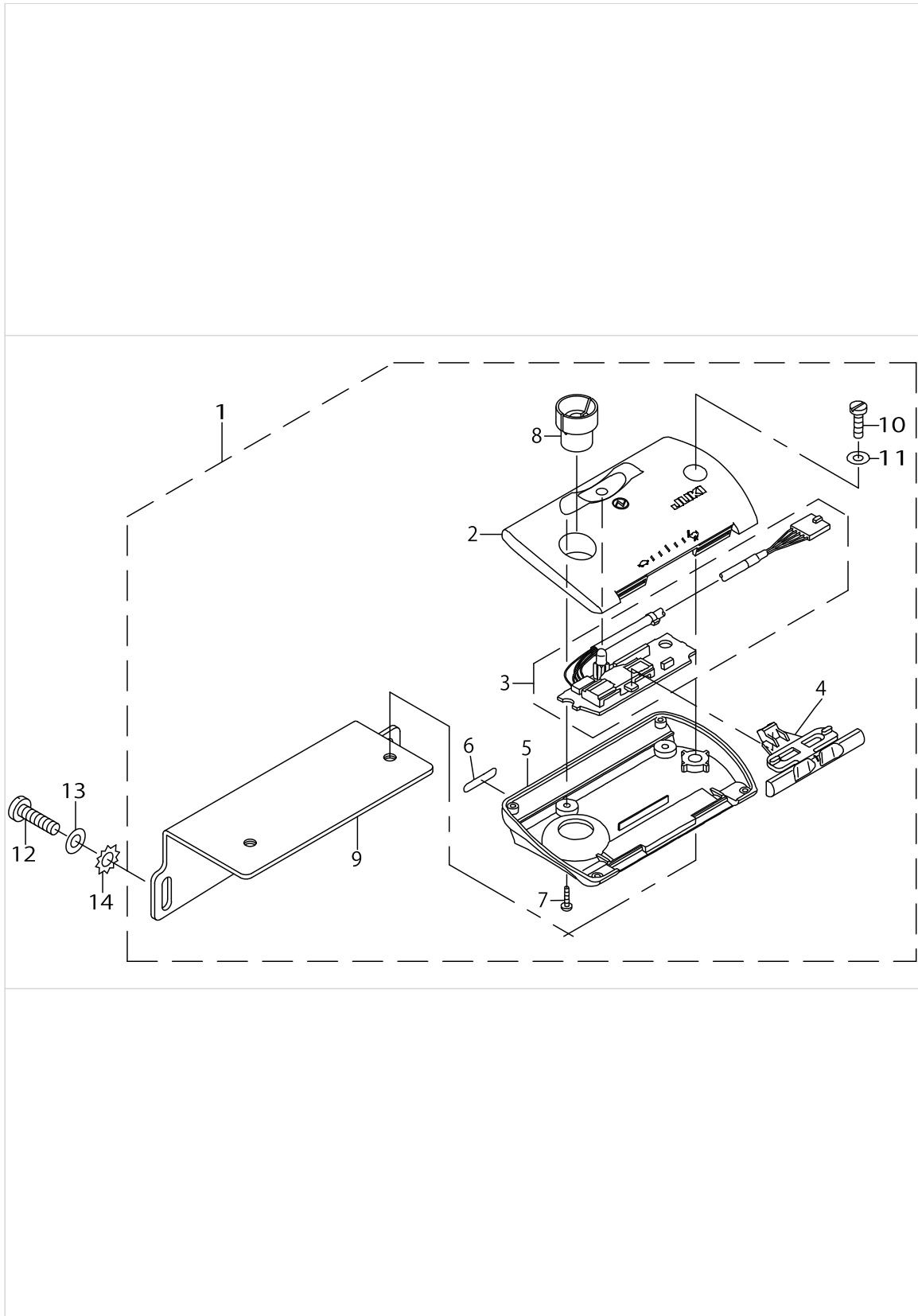
CP-660 PANEL COMPONENTS



CP-660 PANEL COMPONENTS

No.	Parts No.	Parts name	Remarks	Level	Cons	Qty
1	M2501387BAA	CP-660 PANEL ASM. TYPE. B				1
2	M11013870A0	CP-660 SWITCH BOARD ASM.		*		1
3	M8601382AA0	CP-630 CIRCUIT BOARD A ASM.		*		1
4	M8501378AA0	CORD A ASM.		*		1
5	M1008371000	FRONT PANEL TYPE B		*		1
6	M1009371000	BACK PANEL TYPE B		*		1
7	M1003371000	CORD EXIT COVER		*		1
8	M1010371000	PANEL BRACKET LH		*		1
9	M1003370000	SPEED ADJUSTING KNOB, A		*		1
10	M1005371000	INDICATION WINDOW		*		1
11	M7001370B0A	NAME PLATE TYPE B0A		*		1
12	SM4030801SC	SCREW M3 X 8		*		6
13	SV4031006SR	SCREW M3 L=10		*		4
14	SV4031605SR	SCREW M3 L=16		*		2
15	SS6111210SP	SCREW 11/64-40 L=12				2
16	WP0450801SD	WASHER 4.5X10X0.8				2

CP-60 PANEL COMPONENTS



CP-60 PANEL COMPONENTS

No.	Parts No.	Parts name	Remarks	Level	Cons	Qty
1	M2501383BBA	CP-60 UNIT TYPE B				1
2	M1001370000	TOP PANEL		*		1
3	M8601370DA0	CP-30 CIRCUIT BOARD ASM.,D		*		1
4	M1003370000	SPEED ADJUSTING KNOB, A		*		1
5	M1002370000	BOTTOM PANEL		*		1
6	M7001370B0A	NAME PLATE TYPE B0A		*		1
7	ST4031021SR	TAPPING SCREW D=3 L=10		*		2
8	M1005370000	COLLAR		*		1
9	M1004370000	BRACKET		*		1
10	SS7121810SN	SCREW 3/16-28 L=18		*		2
11	WP0531001SC	WASHER		*		2
12	SS6111210SP	SCREW 11/64-40 L=12				2
13	WP0450801SD	WASHER 4.5X10X0.8				2
14	WT0530002KS	TOOTHED WASHER D=5.3				2

HOW TO MAKE USE OF THIS PARTS LIST

1.As to "#01" and "#02" refer to the "Note" given at the bottom of the respective pages.

2.Codes on the "Qty" column

- Each numeral indicates the number of parts required.
- "0.1" and "2.5" indicate the length (in meters) of the respective parts.

3.Parentheses mean that the corresponding part is a subpart that constructs an assembly part.

4.Dotted lines on the Figures indicate assembly parts.

1. リストページの# 0 1、# 0 2の印は、ページ下の"注記"の説明を参照下さい。
2. 数量欄の数字は、個数を表し、0. 1、2. 5等の数値は、長さ（単位メートル）を表します。
3. 数量欄の（ ）は、組部品を構成している子部品であることを意味します。
4. イラストページの-----枠は、組構成であることを意味します。

NUMERICAL INDEX OF PARTS

PART NO	PAGE	REF NO.	PART NO	PAGE	REF NO.	PART NO	PAGE	REF NO.
29319506	10	10·11	M2112464BA0	2	1~10	M6105461DAA	10	17
29319605	10	10·11	M2112464CA0	2	1~10	M7001370B0A	12	11
D7114555BAB	10	9	M2112464DA0	2	1~10	M7001370B0A	14	6
D8211555D00	10	3	M2112464EA0	2	1~10	M8002430000	6	16
EA9500B0100	6	28	M2112464FA0	2	1~10	M8501378AA0	12	4
HF001400500	8	64	M2501383BBA	14	1	M8501471BA0	6	9~11
HF0078020P0	10	14~16	M2501387BAA	12	1	M8501471CA0	6	9~11
HF0079020P0	8	70·71	M3001461000	6	42	M8501471DA0	6	9~11
HF0079020P0	10	14~16	M3002461000	6	43	M8502461AA0	6	12
HF0079040P0	8	70·71	M3201461000	6	14	M8503461DA0	6	47
HF0079040P0	10	14~16	M3201462CA0	6	13	M8508461AA0	6	26
HF009511000	8	72	M3202461000	6	15	M8510461AA0	8	68·69
HK04905002A	8	73·74	M3401461000	6	18·19	M8510461BA0	8	68·69
HK04905003B	8	73·74	M3401461BA0	6	18·19	M8511461AA0	8	63
HX00292000A	8	48	M3601461000	4	14	M8525351AA0	10	12
HX004540000	8	49	M3601461AA0	4	13	M8526351AA0	10	19
M1001370000	14	2	M3602461000	4	15	M8601370DA0	14	3
M1002370000	14	5	M3801461000	6	45	M8601382AA0	12	3
M1003370000	12	9	M3802461AA0	6	20	M8601464AA0	6	2
M1003370000	14	4	M3803461000	6	46	M8601471DAA	6	1
M1003371000	12	7	M3804461000	6	23	M8603461AA0	6	4~8
M1004370000	14	9	M3805461000	8	67	M8603461BA0	6	4~8
M1005370000	14	8	M3805461AA0	8	65·66	M8604461AA0	6	4~8
M1005371000	12	10	M3805461BA0	8	65·66	M8604461BA0	6	4~8
M1008371000	12	5	M3806461AA0	6	21	M8605461AA0	6	4~8
M1009371000	12	6	M4001461000	6	29	M8606461AA0	6	3
M1010371000	12	8	M4001461BA0	6	24	M9644110000	10	13
M1014110000	6	44	M4002461000	6	30	MAO11532000	10	8
M11013870A0	12	2	M4004461000	6	31	MTJVH00390A	4	26
M2002464BA0	4	1~10	M4005461000	6	32	MTSP0070AA0	4	27
M2002464CA0	4	1~10	M4006461000	6	27	NM6080003SC	10	4
M2002464DA0	4	1~10	M4006461AA0	6	25	NM6100011SF	4	18
M2002464EA0	4	1~10	M4007351000	6	34	SK3512001SF	10	7
M2002464FA0	4	1~10	M4008351000A	6	35	SL4031081SF	8	81
M2010110000	6	33	M4009351000A	6	36	SL4040885SH	8	77
M2012464BA0	2	1~10	M4011351000	6	37	SL4040891SC	4	25
M2012464CA0	2	1~10	M4012351000	6	38	SL4041081SC	6	58
M2012464DA0	2	1~10	M4201461000	4	21	SL4041081SC	8	58
M2012464EA0	2	1~10	M4202461000	4	22	SL4041081SF	8	83
M2012464FA0	2	1~10	M4205461000	10	5	SL4041091SE	8	62
M2102464BA0	4	1~10	M6001461CA0	4	11·12	SL4041281SF	8	54
M2102464CA0	4	1~10	M6001461DA0	4	11·12	SL4041681SF	8	53
M2102464DA0	4	1~10	M6101461AA0	10	1·2	SL4042091SC	6	17
M2102464EA0	4	1~10	M6101461CA0	10	1·2	SL4051085SH	8	78
M2102464FA0	4	1~10	M6102461DAA	10	18	SM1040801SC	8	59

NUMERICAL INDEX OF PARTS

PART NO	PAGE	REF NO.
SM4030801SC	12	12
SM4030801SF	6	39
SM4051405SE	4	24
SM6031402TP	8	75
SM8040802TP	6	40
SM9040803SF	4	16
SS6111210SP	12	15
SS6111210SP	14	12
SS7121810SN	14	10
ST4031021SR	14	7
SV4030601SR	6	41
SV4031006SR	12	13
SV4031605SR	12	14
WP0430801SE	4	17
WP0450801SD	12	16
WP0450801SD	14	13
WP0531001SC	14	11
WP1052001SE	4	19
WS0310002KP	8	76
WS0820002KR	10	6
WS1020002KR	4	20
WT0430001KN	8	79
WT0530001KN	8	80
WT0530002KS	14	14