

MODEL : AMS-210DHL-6320

List No : 1236-02

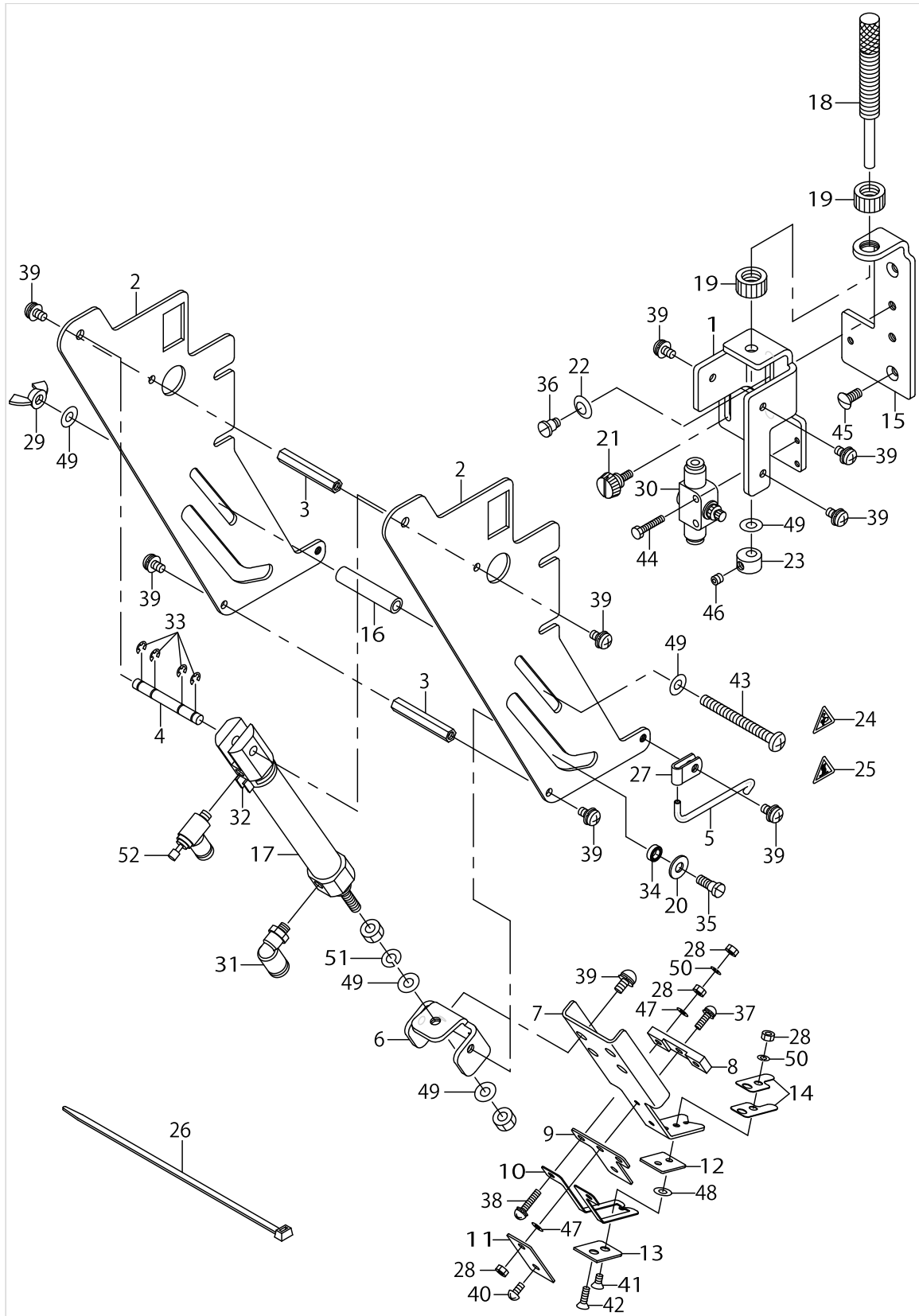
PARTS LIST

Published:09/10/2017

CONTENTS

UPPER HOT-WIRE COMPONENTS	1
LOWER HOT-WIRE COMPONENTS.....	5
NEEDLE THREAD FEEDER COMPONENTS.....	7
SOLENOID VALVE COMPONENTS	9
ELECTRICAL EQUIPMENT COMPONENTS	11
EXCLUSIVE PARTS FOR AMS-210DHL 6320	13
OPTIONAL PARTS	17
HOW TO MAKE USE OF THIS PARTS LIST	19

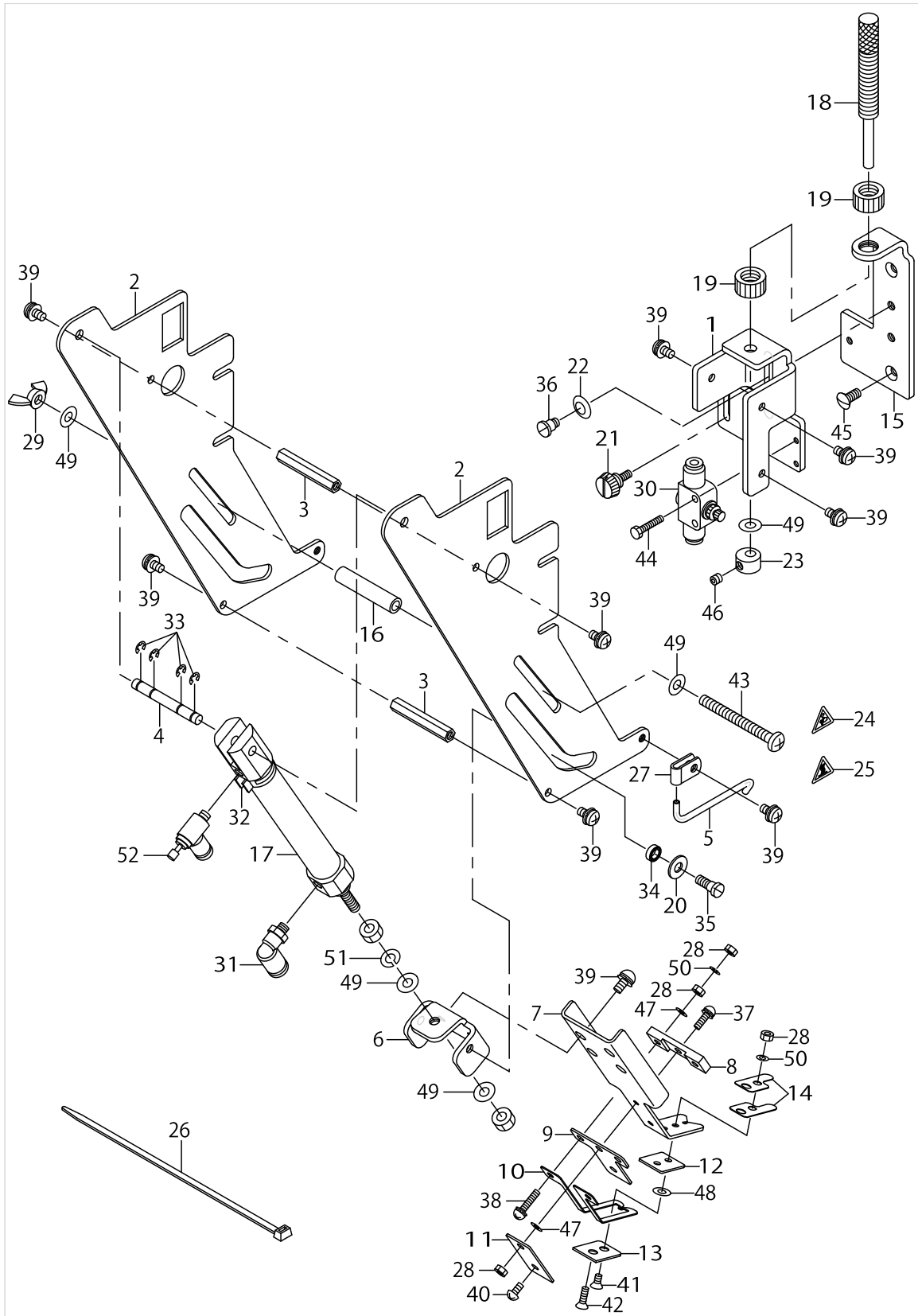
UPPER HOT-WIRE COMPONENTS



UPPER HOT-WIRE COMPONENTS

No.	Parts No.	Parts name	Remarks	Level	Cons	Qty
1	D1001D10N0H	FIXED PLATE				1
2	D1002D10N0H	GUIDE PLATE				2
3	D1003D10N0H	GUIDE STUD				2
4	D1004D10N0H	CYLINDER FIXED SHAFT				1
5	D1005D10N0H	AIR BLOW PIPE				1
6	D1006D10N0H	THREAD TRIMMER GUIDE BASE				1
7	D1007D10N0H	HEATER BASE				1
8	D1008D10N0H	INSULATING PLATE C				1
9	D1009D10N0H	INSULATING PLATE A				1
10	D1010D10N0H	UPPER HOT-WIRE				1
11	D1011D10N0H	INSULATING PLATE B				1
12	D1012D10N0H	INSULATING PLATE D				1
13	D1013D10N0H	INSULATING PLATE E				1
14	D1014D10N0H	SPRING PLATE				2
15	D1015D10N0H	ADJUST PLATE				1
16	D1016D10N0H	THREAD TRIMMER STOPPER				1
17	PA1607503A0	AIR CYLINDER				1
18	12114716	PRESSER REGULATOR SCREW				1
19	12114807	PRESSER REGULATOR NUT				2
20	B2107816000	WASHER				2
21	B2549372000	CLAMP SCREW A				1
22	B3125155000	DISK SPRING				2
23	B3418245000	SPRING HOLDER				1
24	CM300200001	ATTENTION SEAL				1
25	CM300300001	SEAL				1
26	EA9500B0200	CABLE BAND 150				1
27	HX001500000	CLIP				1
28	NM6030001SC	NUT M3				6
29	NM9050001SC	WING NUT M5X0.8				1
30	PC012401000	SPEED CONTROLLER				1
31	PJ304040504	ELBOW UNION				1
32	PX5000480A0	SWITCH FITTING METAL				1
33	RE0300000K0	E-RING 3				4
34	SB105001400	ROLLING SHAFT HOLDER				2
35	SD0500402SP	HINGE SCREW D= 5 H= 4				2
36	SD0550451SP	HINGE SCREW				2
37	SL4031091SC	SCREW M3 X 10				1
38	SL4031481SC	SCREW M3 X 14				2
39	SL4040891SC	SCREW M4 L=8				10
40	SM0030601SC	SCREW M3X0.5 L=6				1
41	SM1030401SE	SCREW M3 L=4				1
42	SM1030801SE	SCREW M3X0.5 L=8				1
43	SM4055001SF	SCREW M5 L=50				1
44	SM9031603SE	SCREW M3 L=16				2
45	SS2111010TP	SCREW 11/64-40 L=9.5				2
46	SS8110422TP	SCREW 11/64-40 L=4				1
47	WP0320500SC	WASHER M3				4

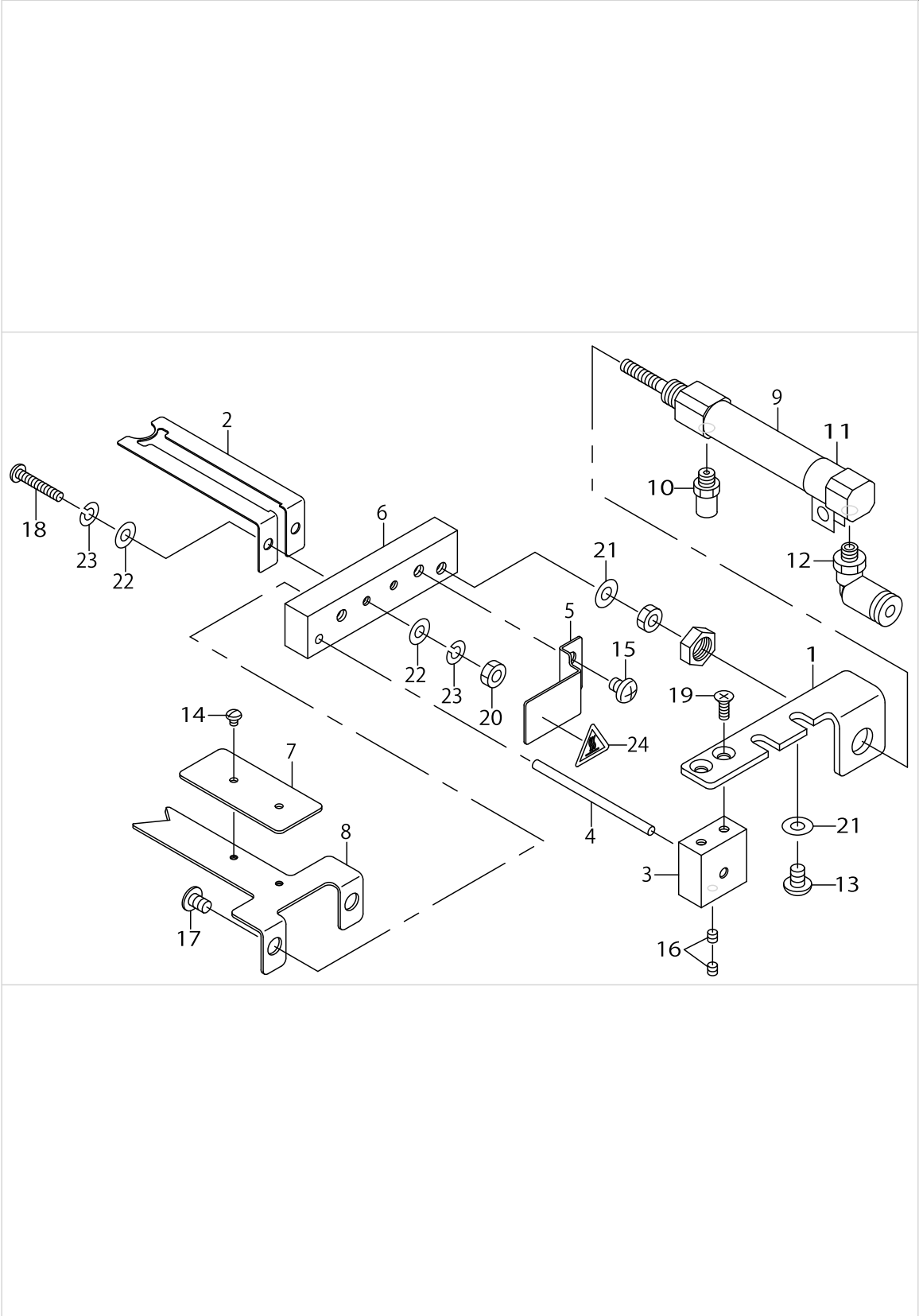
UPPER HOT-WIRE COMPONENTS



UPPER HOT-WIRE COMPONENTS

No.	Parts No.	Parts name	Remarks	Level	Cons	Qty
48	WP0460556SD	WASHER 4.6X7.5X0.5				2
49	WP0531001SC	WASHER				5
50	WS0310002KN	SPRING WASHER M3				3
51	WS0510002KN	SPRING WASHER				1
52	PC010508000	SPEED CONTROLLER				1

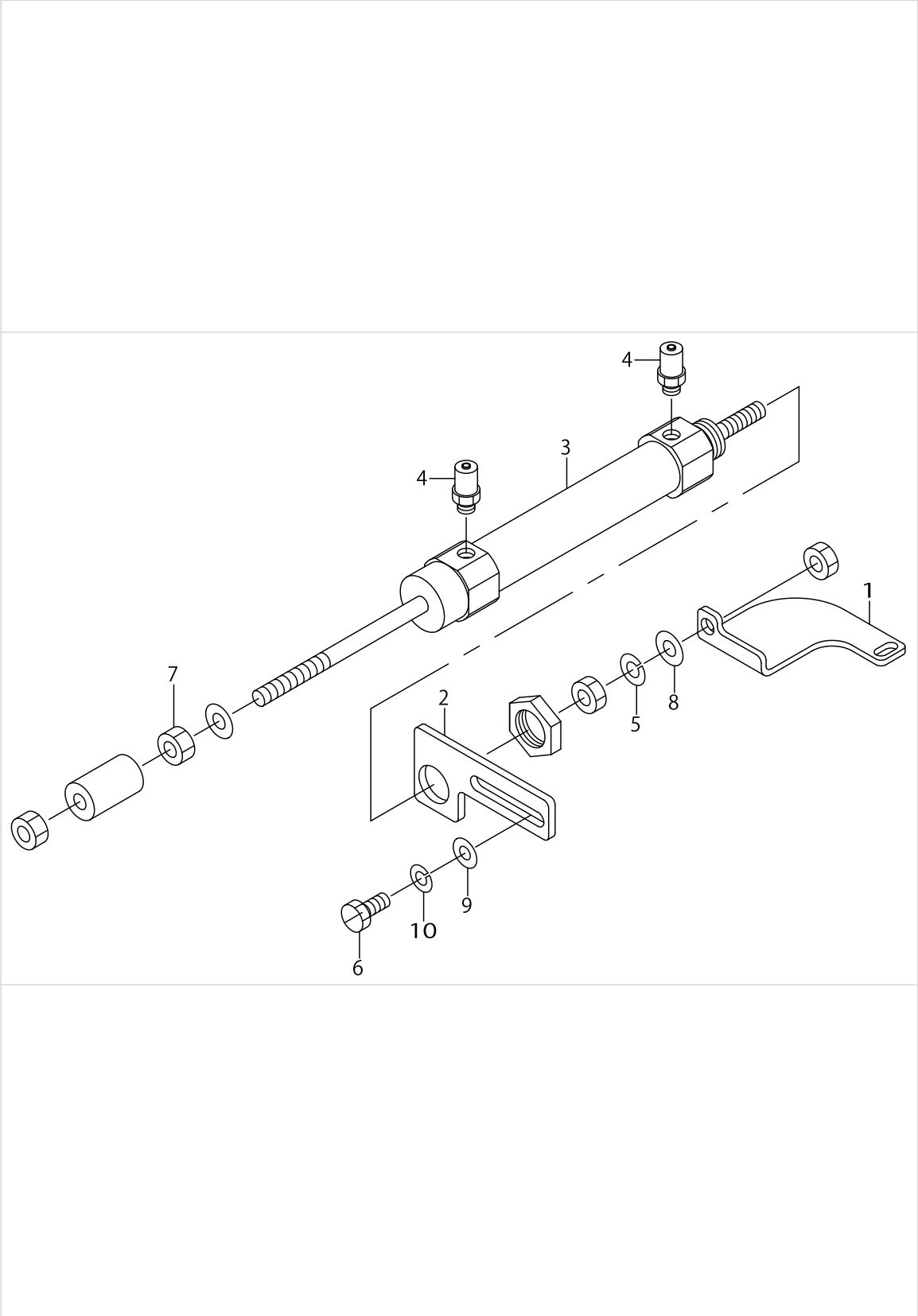
LOWER HOT-WIRE COMPONENTS



LOWER HOT-WIRE COMPONENTS

No.	Parts No.	Parts name	Remarks	Level	Cons	Qty
1	D2001D10N0H	CYLINDER STAY				1
2	D2002D10N0H	LOWER HOT-WIRE				1
3	D2003D10N0H	GUIDE BASE				1
4	D2004D10N0H	GUIDE BAR				1
5	D2005D10N0H	COVER				1
6	D2006D10N0H	THREAD TRIMMER BASE				1
7	D2007D10N0H	INSULATING PLATE G				1
8	D2008D10N0H	LOWER THREAD FEEDER				1
9	PA1003024A0	AIR CYLINDER				1
10	PJ032052503	HOSE NIPPLE				1
11	PX5000500A0	BRACKET				1
12	PJ304040504	ELBOW UNION				1
13	SS4110615SP	SCREW 11/64-40 L=6				2
14	SS4060310SP	SCREW 3/32-56 L=2.5				2
15	SM4040501SN	SCREW M4X0.7 L=5				1
16	SM8030302TP	SCREW M3X0.5 L=3				2
17	SM0040601SC	SCREW M4X0.7 L=6				2
18	SM4031851SR	SCREW				2
19	SM1030801SC	SCREW M3 L=8				2
20	NM6030001SC	NUT M3				2
21	WP0430800SC	WASHER M4				3
22	WP0320500SC	WASHER M3				4
23	WS0310002KN	SPRING WASHER M3				4
24	CM300300001	SEAL				1

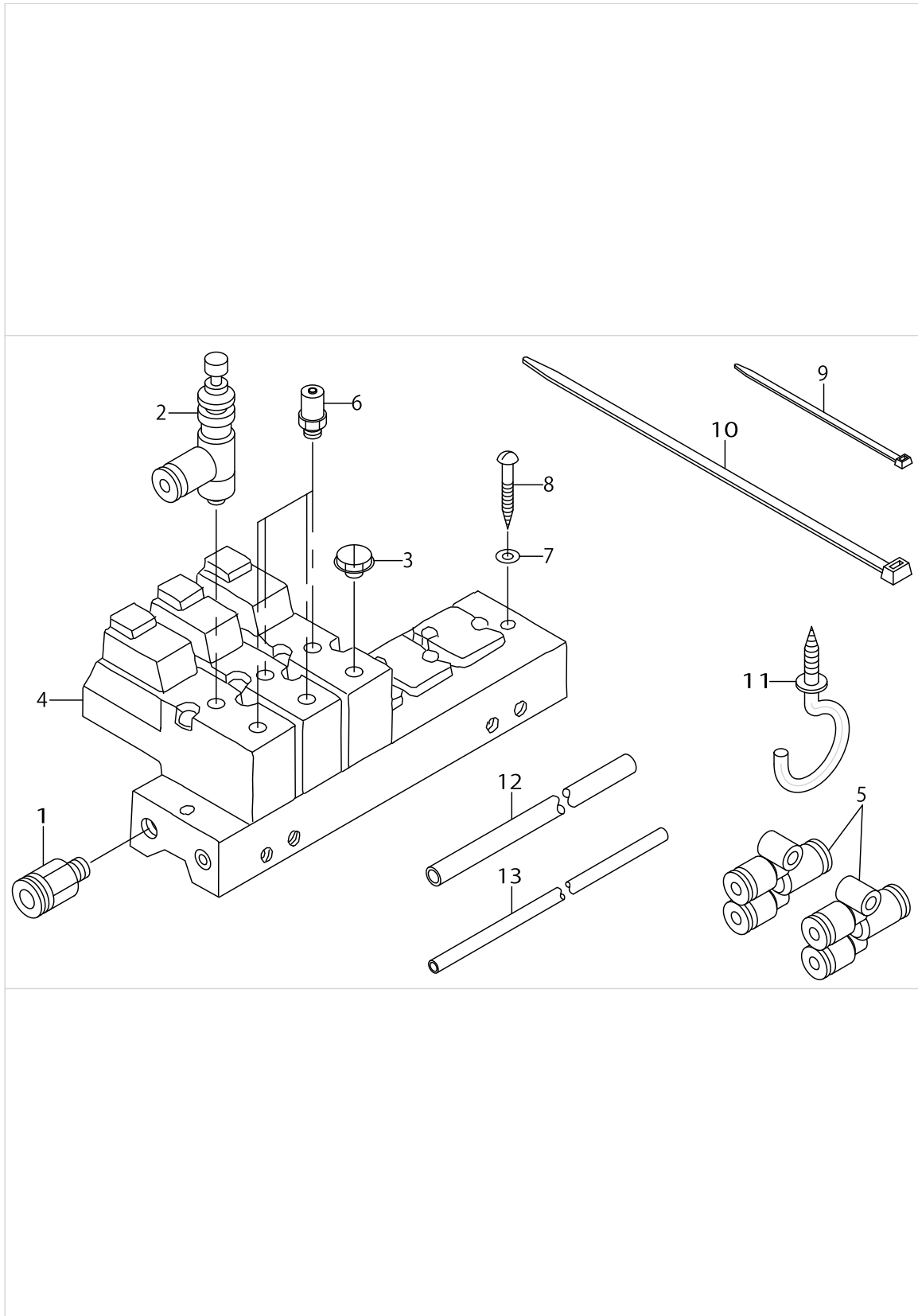
NEEDLE THREAD FEEDER COMPONENTS



NEEDLE THREAD FEEDER COMPONENTS

No.	Parts No.	Parts name	Remarks	Level	Cons	Qty
1	D3001D10N0H	NEEDLE THREAD FEEDER				1
2	D3002D10N0H	NEEDLE THREAD FEEDING PLATE				1
3	PA1604003A0	AIR CYLINDER				1
4	PJ032052503	HOSE NIPPLE				2
5	WS0510002KN	SPRING WASHER				1
6	SS9111010SP	SCREW 11/64-40 L=9.5				2
7	NM6060001SC	NUT M6				1
8	WP0531001SC	WASHER				1
9	WP0450801SD	WASHER 4.5X10X0.8				2
10	WS0451040KP	SPRING WASHER 4.5X8.5X1				2

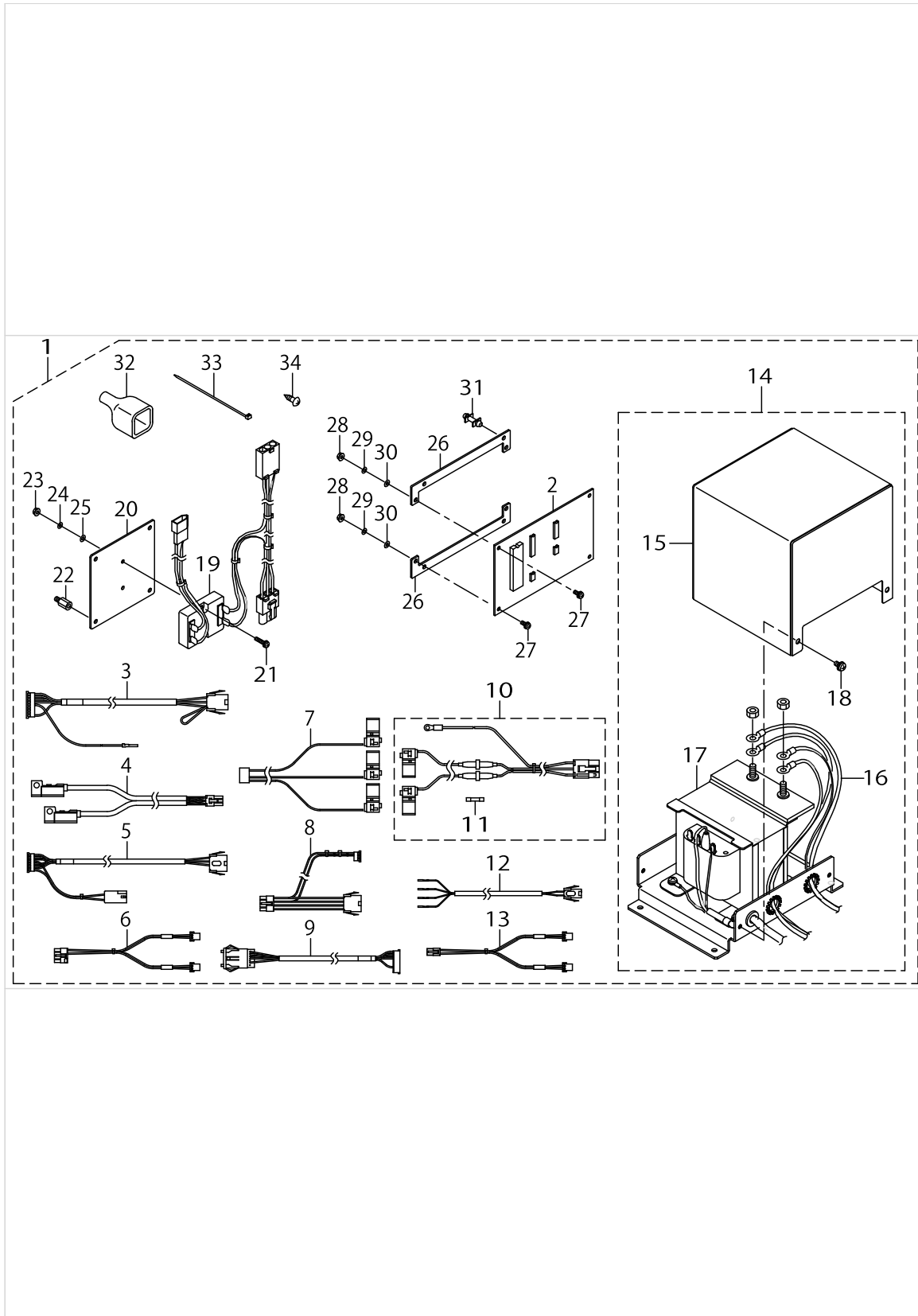
SOLENOID VALVE COMPONENTS



SOLENOID VALVE COMPONENTS

No.	Parts No.	Parts name	Remarks	Level	Cons	Qty
1	PJ301065103	HALF UNION 6XPT1/8				1
2	PF070501000	PRESSURE DECREASING VALVE				1
3	PJ020500002	PLUG				1
4	PV0351240B0	SOLENOID VALVE ASM.				1
5	PJ308040002	QUICK COUPLING				2
6	PJ032052503	HOSE NIPPLE				4
7	WP0320500SC	WASHER M3				2
8	SK3312500SE	WOOD SCREW D=3.1 L=25				2
9	EA9500B0000	CLIP CV-70S				10
10	EA9500B0200	CABLE BAND 150				10
11	MAT81163T00	CORD HOLDER				1
12	BT0600401EB	TUBE				0.8
13	BT0400251EB	URETHANE HOSE, BLACK				9.4

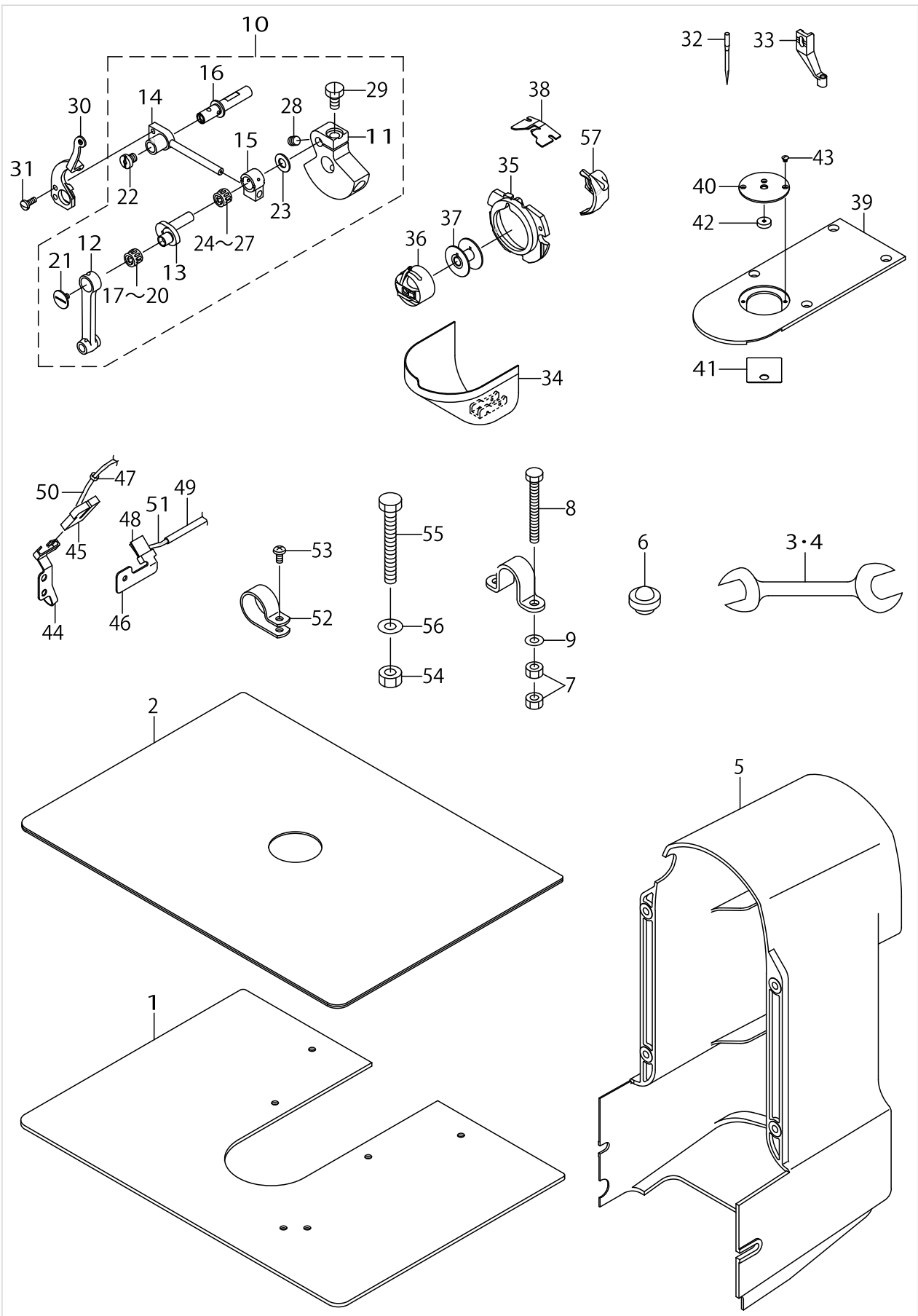
ELECTRICAL EQUIPMENT COMPONENTS



ELECTRICAL EQUIPMENT COMPONENTS

No.	Parts No.	Parts name	Remarks	Level	Cons	Qty
1	D5000D10NAH	AL-4 ELECTRICAL EQUIPMENT ASM.				1
2	D5001D10NAH	AL-4 CPU CIRCUIT BOARD ASM.		*		1
3	D5010D10NAH	SENSOR CONNECTING CORD ASM.		*		1
4	D5011D10NAH	CYLINDER SENSOR ASM.		*		1
5	D5012D10NAH	SOLENOID CONNECTING CORD ASM.		*		1
6	D5013D10NAH	SOLENOID VALVE CORD ASM.		*		1
7	D5014D10NAH	POWER SUPPLY CORD ASM.		*		1
8	D5015D10NAH	WIPER SIGNAL CORD ASM.		*		1
9	D5016D10NAH	DSW ASM.		*		1
10	D5017D10NAHA	HEATER POWER SUPPLY CORD ASM.		*		1
11	HF0014050S0	FUSE		*		2
12	D5018D10NAH	J79-CN6 CONNECTING CORD ASM.		*		1
13	D5019D10NAH	SOLENOID VALVE CORD A ASM.		*		1
14	D5020D10NAH	HEATER TRANSFORMER COMPL.		*		1
15	G5604341000	TRANSFORMER COVER		*		1
16	D5021D10NAH	HEATER CORD ASM.		*		4
17	D5022D10NAH	HEATER TRANSFORMER ASM.		*		1
18	SL4040891SC	SCREW M4 L=8		*		4
19	D5026D10NAH	HEATER RELAY ASM.		*		1
20	D5025D10N0H	HEATER RELAY INSTALLING PLATE		*		1
21	SL4031491SC	SCREW M3X14		*		2
22	HX003390000	STUD		*		4
23	NM6030001SC	NUT M3		*		2
24	WS0310002KN	SPRING WASHER M3		*		2
25	WP0320500SC	WASHER M3		*		2
26	D5024D10N0H	CPU CIRCUIT BOARD FIX PLATE A		*		2
27	SL4030891SC	SCREW M3X8		*		4
28	NM6030001SC	NUT M3		*		4
29	WS0310002KN	SPRING WASHER M3		*		4
30	WP0320500SC	WASHER M3		*		4
31	HX00438000A	SPACER		*		4
32	M9637110000	12-POLE PLUG COVER		*		1
33	EA9500B0100	CABLE BAND		*		1
34	SK3451601SC	WOOD SCREW		*		4

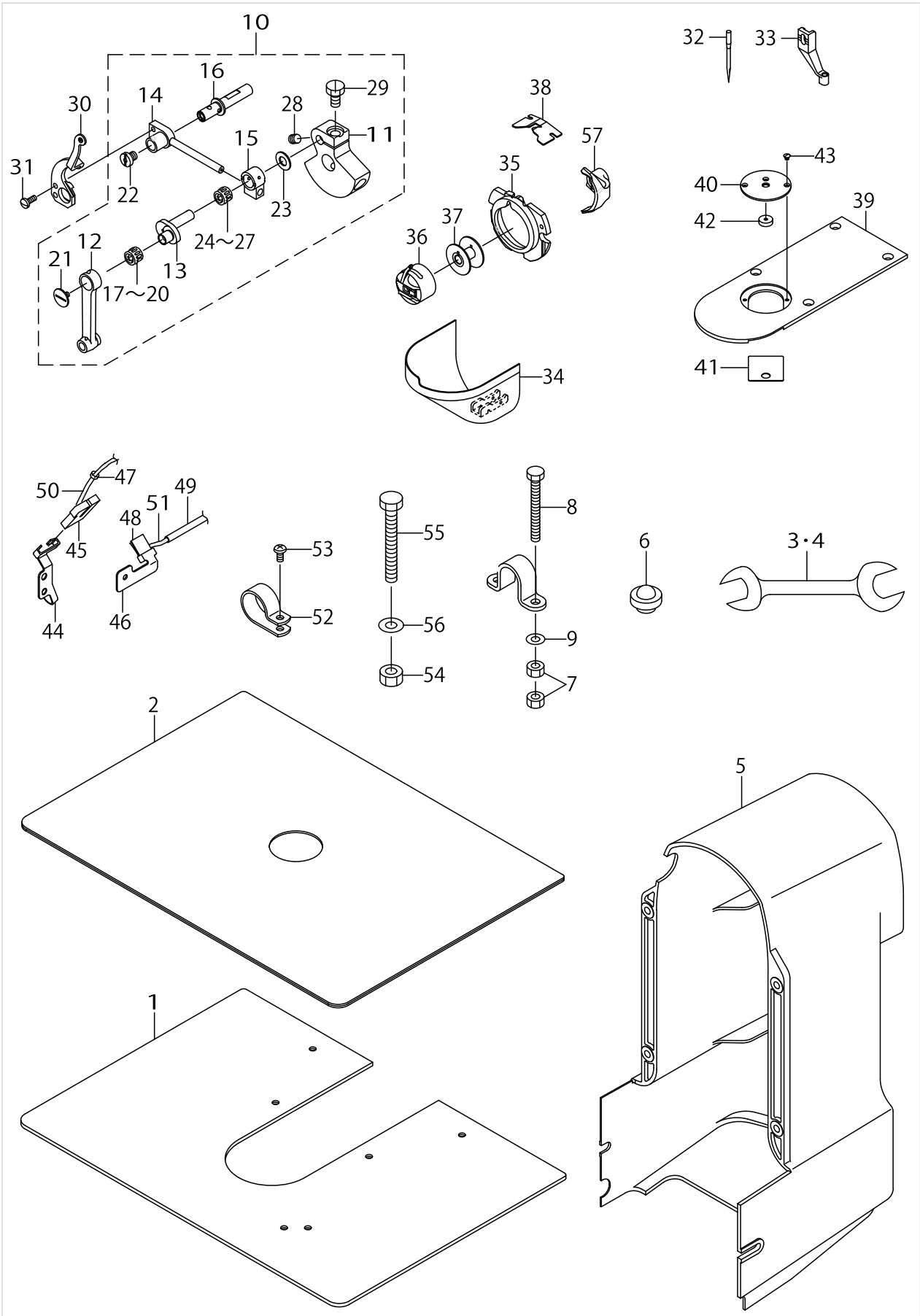
EXCLUSIVE PARTS FOR AMS-210DHL 6320



EXCLUSIVE PARTS FOR AMS-210DHL 6320

No.	Parts No.	Parts name	Remarks	Level	Cons	Qty
1	D4005D10N0H	NEEDLE PLATE SUPPORT COVER(AL)				1
2	D4006D10N0H	COVER SHEET				1
3	G5103151000	SPANNER 5.5X7				1
4	B9143372000	WRENCH (7.1 X 8.1)				1
5	B1107210D00	MOTOR COVER	FOR JAPAN			1
6	11047107	RUBBER CUSHION	FOR JAPAN			3
7	NM6060001SC	NUT M6	FOR JAPAN			8
8	SM9065513SF	SCREW M6X55	FOR JAPAN			4
9	WP0621016SD	WASHER 6.2X13X1	FOR JAPAN			4
10	B1205210DA0	COUNTER WEIGHT ASM.				1
11	B1205210D00	COUNTER WEIGHT		*		1
12	B1404210D00	NEEDLE BAR CRANK		*		1
13	B1408210D00	NEEDLE BAR CRANK		*		1
14	B1903210D00	BALANCE SLIDE SHAFT		*		1
15	B1904210D00	BALANCE SLIDE BLOCK		*		1
16	B1906210D00	BALANCE SUPPORT SHAFT		*		1
17	B1826512A00	NEEDLE BUSHING (A)	SELECTIVE PART	*		1
18	B1826512B00	NEEDLE BUSHING (B)	SELECTIVE PART	*		1
19	B1826512C00	NEEDLE BUSHING (C)	SELECTIVE PART	*		1
20	B1826512D00	NEEDLE BUSHING (D)	SELECTIVE PART	*		1
21	B1903552000	LEFT SCREW		*		1
22	D1906L7VV00	SET SCREW		*		1
23	10548501	THREAD TAKE-UP CRANK SPACER		*		1
24	SB30700020A	BEARING	SELECTIVE PART	*		1
25	SB30700020B	BEARING	SELECTIVE PART	*		1
26	SB30700020C	BEARING	SELECTIVE PART	*		1
27	SB30700020D	BEARING	SELECTIVE PART	*		1
28	SS8660610TP	SCREW 1/4-40 L=6		*		1
29	SS9661230CP	SCREW 1/4-40 L=12		*		1
30	B1902210DA0	SLIDE BALANCE COMPL.				1
31	SS7090910TP	SCREW 9/64-40 L= 8.5				2
32	MDP170B2600	NEEDLE DPX17 #26				1
33	B1601210D0CA	INTERMEDIATE PRESSER C				1
34	D4007D10N0H	CYLINDER ARM CAP				1
35	D4008D10NAH	SHUTTLE RACE RING ASM.,H				1
36	B1828210DAC	BOBBIN CASE ASM.				1
37	B1806210D0A	BOBBIN				1
38	B1815210D0A	SPRING				1
39	D4001D10N0H	NEEDLE PLATE				1
40	D4002D10N0H	NEEDLE HOLE GUIDE D=4.5				1
41	D4003D10N0H	INSULATING PLATE F				1
42	D4004D10N0H	HOT-WIRE SUPPORT				1
43	SS2060320SP	SCREW 3/32-56 L= 3.2				3
44	B3502210D00	LUBRICATION PLATE				1
45	B3503210D00	OIL FELT				1
46	B3504210D00	LUBRICATION PLATE				1
47	B1419026000	OIL WICK PRESSER				3

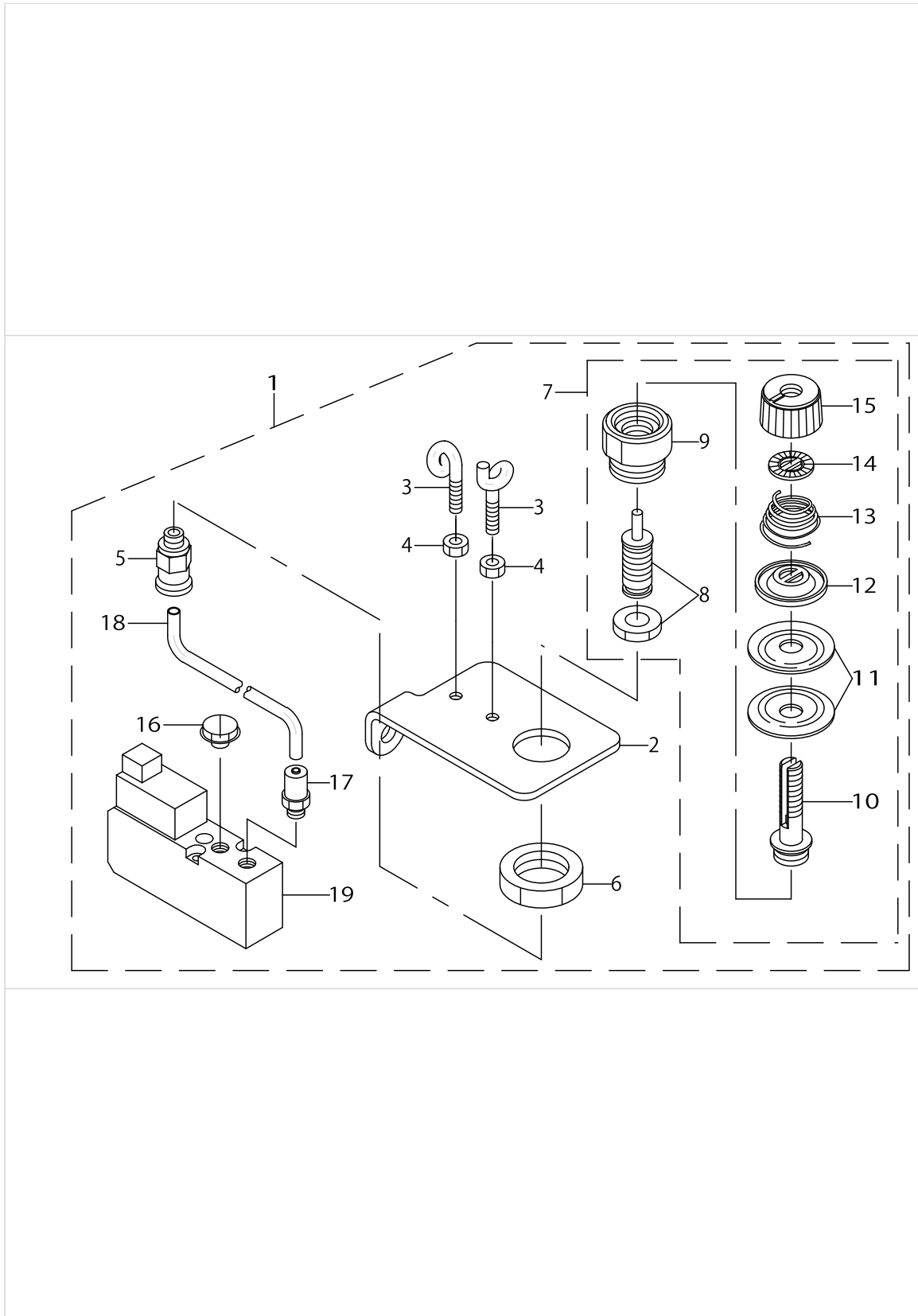
EXCLUSIVE PARTS FOR AMS-210DHL 6320



EXCLUSIVE PARTS FOR AMS-210DHL 6320

No.	Parts No.	Parts name	Remarks	Level	Cons	Qty
48	B3518280000	BALANCE LUBRICATING				1
49	BP300000000	VINYL PIPE				0.6
50	CQ202000000	OIL WICK				0.5
51	CQ252200000	OIL WICK				0.8
52	HX00150000M	CABLE CLIP				3
53	SS4110915SP	SCREW 11/64-40 L=9				3
54	NM6080001SC	NUT M8X1.25	FOR JAPAN			1
55	SM9086503SM	SCREW M8 L=65	FOR JAPAN			1
56	WP0851846SC	WASHER 8.5X22.0X1.8	FOR JAPAN			1
57	D4009D10N0H	SHUTTLE DRIVER (FOR #8)				1

OPTIONAL PARTS



OPTIONAL PARTS

No.	Parts No.	Parts name	Remarks	Level	Cons	Qty
1	D4012D10NAH	THREAD TENSION NO.3 ASM.SPECIA				1
2	D4012D10N0H	THREAD TENSION NO.3 BASE		*		1
3	B3114771000	THREAD GUIDE		*		2
4	NS6090310SP	NUT 9/64-40		*		2
5	PJ301040502	HALF UNION 4XM5		*		1
6	NM6160511SE	NUT M16X1.5		*		1
7	G23013090A0	THREAD TENSION ASM.		*		1
8	PA0600504A0	AIR CYLINDER		*		1
9	G2302309000	THREAD TENSION ROD BASE		*		1
10	G2301309000	THREAD TENSION ROD		*		1
11	B3126012000	THREAD TENSION DISK		*		2
12	B3132552000	THREAD TENSION DISK PRESSER		*		1
13	B3121352000	TENSION SPRING		*		1
14	B3120125000	ROTATING STOPPER		*		1
15	11072204	TENSION NUT		*		1
16	PJ020500002	PLUG		*		1
17	PJ032052503	HOSE NIPPLE		*		1
18	BT0400251EB	URETHANE HOSE, BLACK		*		1.4
19	PV140501000	SOLENOID VALVE		*		1

HOW TO MAKE USE OF THIS PARTS LIST

1.As to "#01" and "#02" refer to the "Note" given at the bottom of the respective pages.

2.Codes on the "Qty" column

- Each numeral indicates the number of parts required.
- "0.1" and "2.5" indicate the length (in meters) of the respective parts.

3.Parentheses mean that the corresponding part is a subpart that constructs an assembly part.

4.Dotted lines on the Figures indicate assembly parts.

1. リストページの# 0 1、# 0 2の印は、ページ下の"注記"の説明を参照下さい。
2. 数量欄の数字は、個数を表し、0. 1、2. 5等の数値は、長さ（単位メートル）を表します。
3. 数量欄の（ ）は、組部品を構成している子部品であることを意味します。
4. イラストページの-----枠は、組構成であることを意味します。

NUMERICAL INDEX OF PARTS

PART NO	PAGE	REF NO.	PART NO	PAGE	REF NO.	PART NO	PAGE	REF NO.
10548501	14	23	CQ202000000	16	50	D5013D10NAH	12	6
11047107	14	6	CQ252200000	16	51	D5014D10NAH	12	7
11072204	18	15	D1001D10N0H	2	1	D5015D10NAH	12	8
12114716	2	18	D1002D10N0H	2	2	D5016D10NAH	12	9
12114807	2	19	D1003D10N0H	2	3	D5017D10NAHA	12	10
B1107210D00	14	5	D1004D10N0H	2	4	D5018D10NAH	12	12
B1205210D00	14	11	D1005D10N0H	2	5	D5019D10NAH	12	13
B1205210DA0	14	10	D1006D10N0H	2	6	D5020D10NAH	12	14
B1404210D00	14	12	D1007D10N0H	2	7	D5021D10NAH	12	16
B1408210D00	14	13	D1008D10N0H	2	8	D5022D10NAH	12	17
B1419026000	14	47	D1009D10N0H	2	9	D5024D10N0H	12	26
B1601210D0CA	14	33	D1010D10N0H	2	10	D5025D10N0H	12	20
B1806210D0A	14	37	D1011D10N0H	2	11	D5026D10NAH	12	19
B1815210D0A	14	38	D1012D10N0H	2	12	EA9500B0000	10	9
B1826512A00	14	17~20	D1013D10N0H	2	13	EA9500B0100	12	33
B1826512B00	14	17~20	D1014D10N0H	2	14	EA9500B0200	2	26
B1826512C00	14	17~20	D1015D10N0H	2	15	EA9500B0200	10	10
B1826512D00	14	17~20	D1016D10N0H	2	16	G2301309000	18	10
B1828210DAC	14	36	D1906L7VV00	14	22	G23013090A0	18	7
B1902210DA0	14	30	D2001D10N0H	6	1	G2302309000	18	9
B1903210D00	14	14	D2002D10N0H	6	2	G5103151000	14	3·4
B1903552000	14	21	D2003D10N0H	6	3	G5604341000	12	15
B1904210D00	14	15	D2004D10N0H	6	4	HF0014050S0	12	11
B1906210D00	14	16	D2005D10N0H	6	5	HX001500000	2	27
B2107816000	2	20	D2006D10N0H	6	6	HX00150000M	16	52
B2549372000	2	21	D2007D10N0H	6	7	HX003390000	12	22
B3114771000	18	3	D2008D10N0H	6	8	HX00438000A	12	31
B3120125000	18	14	D3001D10N0H	8	1	M9637110000	12	32
B3121352000	18	13	D3002D10N0H	8	2	MAT81163T00	10	11
B3125155000	2	22	D4001D10N0H	14	39	MDP170B2600	14	32
B3126012000	18	11	D4002D10N0H	14	40	NM6030001SC	2	28
B3132552000	18	12	D4003D10N0H	14	41	NM6030001SC	6	20
B3418245000	2	23	D4004D10N0H	14	42	NM6030001SC	12	28
B3502210D00	14	44	D4005D10N0H	14	1	NM6060001SC	8	7
B3503210D00	14	45	D4006D10N0H	14	2	NM6060001SC	14	7
B3504210D00	14	46	D4007D10N0H	14	34	NM6080001SC	16	54
B3518280000	16	48	D4008D10NAH	14	35	NM6160511SE	18	6
B9143372000	14	3·4	D4009D10N0H	16	57	NM9050001SC	2	29
BP300000000	16	49	D4012D10N0H	18	2	NS6090310SP	18	4
BT0400251EB	10	13	D4012D10NAH	18	1	PA0600504A0	18	8
BT0400251EB	18	18	D5000D10NAH	12	1	PA1003024A0	6	9
BT0600401EB	10	12	D5001D10NAH	12	2	PA1604003A0	8	3
CM300200001	2	24	D5010D10NAH	12	3	PA1607503A0	2	17
CM300300001	2	25	D5011D10NAH	12	4	PC010508000	4	52
CM300300001	6	24	D5012D10NAH	12	5	PC012401000	2	30

NUMERICAL INDEX OF PARTS

PART NO	PAGE	REF NO.	PART NO	PAGE	REF NO.
PF070501000	10	2	SS2111010TP	2	45
PJ020500002	10	3	SS4060310SP	6	14
PJ020500002	18	16	SS4110615SP	6	13
PJ032052503	6	10	SS4110915SP	16	53
PJ032052503	8	4	SS7090910TP	14	31
PJ032052503	10	6	SS8110422TP	2	46
PJ032052503	18	17	SS8660610TP	14	28
PJ301040502	18	5	SS9111010SP	8	6
PJ301065103	10	1	SS9661230CP	14	29
PJ304040504	2	31	WP0320500SC	2	47
PJ304040504	6	12	WP0320500SC	6	22
PJ308040002	10	5	WP0320500SC	10	7
PV0351240B0	10	4	WP0320500SC	12	30
PV140501000	18	19	WP0430800SC	6	21
PX5000480A0	2	32	WP0450801SD	8	9
PX5000500A0	6	11	WP0460556SD	4	48
RE0300000K0	2	33	WP0531001SC	4	49
SB105001400	2	34	WP0531001SC	8	8
SB30700020A	14	24~27	WP0621016SD	14	9
SB30700020B	14	24~27	WP0851846SC	16	56
SB30700020C	14	24~27	WS0310002KN	4	50
SB30700020D	14	24~27	WS0310002KN	6	23
SD0500402SP	2	35	WS0310002KN	12	29
SD0550451SP	2	36	WS0451040KP	8	10
SK3312500SE	10	8	WS0510002KN	4	51
SK3451601SC	12	34	WS0510002KN	8	5
SL4030891SC	12	27			
SL4031091SC	2	37			
SL4031481SC	2	38			
SL4031491SC	12	21			
SL4040891SC	2	39			
SL4040891SC	12	18			
SM0030601SC	2	40			
SM0040601SC	6	17			
SM1030401SE	2	41			
SM1030801SC	6	19			
SM1030801SE	2	42			
SM4031851SR	6	18			
SM4040501SN	6	15			
SM4055001SF	2	43			
SM8030302TP	6	16			
SM9031603SE	2	44			
SM9065513SF	14	8			
SM9086503SM	16	55			
SS2060320SP	14	43			