

MODEL : MF-7600-U03

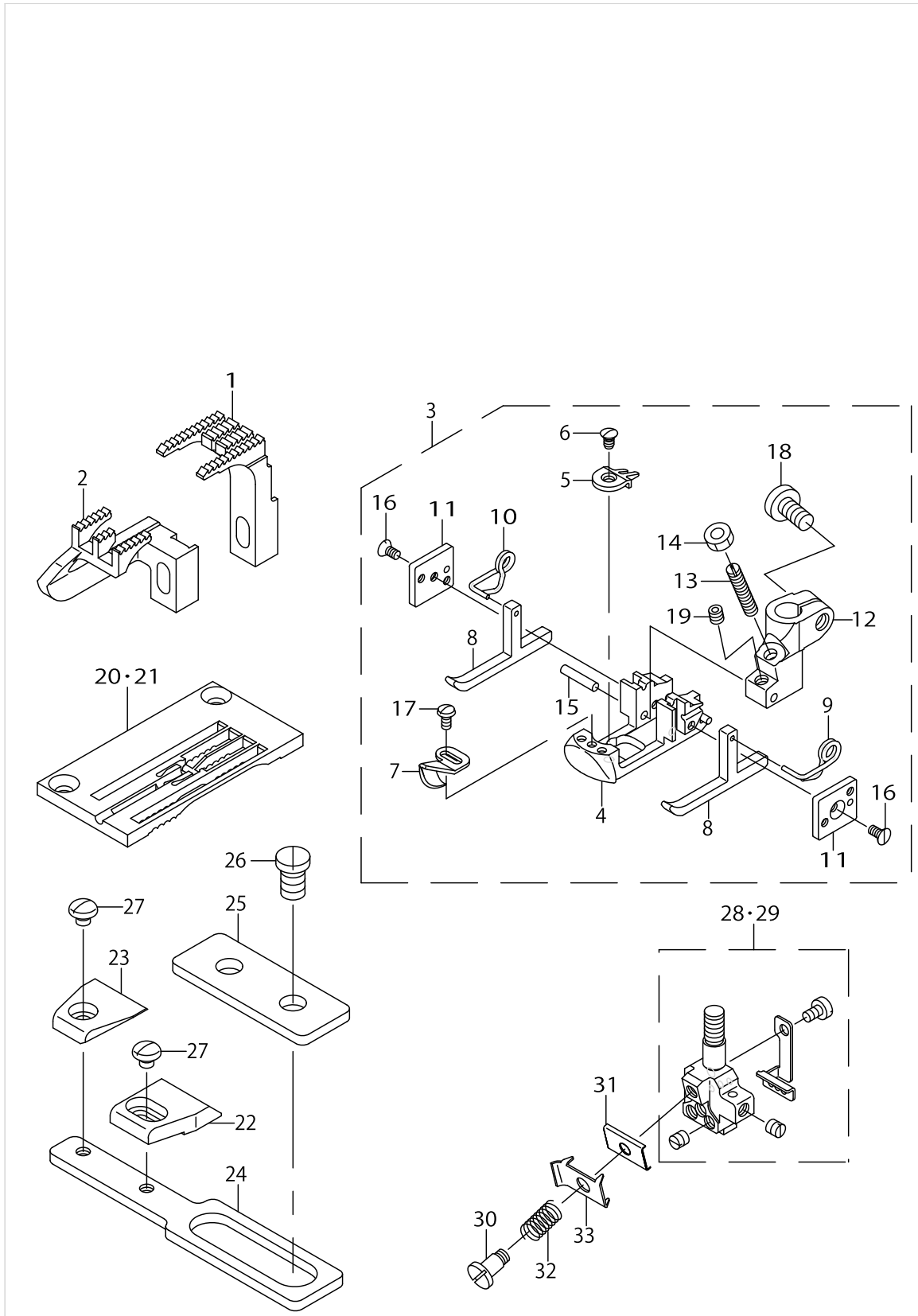
List No : 1230-00

PARTS LIST

Published:09/10/2017

CONTENTS

| | |
|--|---|
| MF-7000 SERIES (MF-7600-U03) | 1 |
| HOW TO MAKE USE OF THIS PARTS LIST | 3 |



MF-7000 SERIES (MF-7600-U03)

| No. | Parts No. | Parts name | Remarks | Level | Cons | Qty |
|-----|-------------|------------------------------|---------|-------|------|-----|
| 1 | US0050305BT | MAIN FEED DOG | | | | 1 |
| 2 | US0050326BR | DIFFERENTIAL FEED DOG | | | | 1 |
| 3 | US50320BZ56 | PRESSER FOOT ASM. | | | | 1 |
| 4 | US0050330ET | PRESSER FOOT | | * | | 1 |
| 5 | 30121008 | STITCH TONGUE | | * | | 1 |
| 6 | 30098008 | SCREW | | * | | 1 |
| 7 | US0050330EJ | CLOTH GUIDE | | * | | 1 |
| 8 | US0050330EK | YIELDING SECTION | | * | | 2 |
| 9 | US0050330EL | SPRING,RIGHT | | * | | 1 |
| 10 | US0050330EM | SPRING,LEFT | | * | | 1 |
| 11 | US0050330EN | PRESSER FOOT GUIDE PLATE | | * | | 2 |
| 12 | US0050330EP | PRESSER FOOT HINGE | | * | | 1 |
| 13 | US0018C1476 | SCREW | | * | | 1 |
| 14 | NM6030250SC | NUT M3X0.5 | | * | | 1 |
| 15 | PH0200102C0 | PARALLEL PIN | | * | | 1 |
| 16 | SM1020450TP | SCREW M2 L=4 | | * | | 2 |
| 17 | US0018C1476 | SCREW | | * | | 1 |
| 18 | SM7040800SL | SCREW | | * | | 1 |
| 19 | SM8030382TP | SCREW M3X0.5 L=3 | | * | | 1 |
| 20 | US50324DE56 | THROAT PLATE FOR COVERING | FOR B56 | | | 1 |
| 21 | US50324DE64 | THROAT PLATE FOR COVERING | FOR B64 | | | 1 |
| 22 | US0050337AU | GUIDE,RIGHT(FLATTENING OUT) | | | | 1 |
| 23 | US0050337AT | GUIDE,LEFT(FLATTENING OUT) | | | | 1 |
| 24 | US0050383AA | GUIDE BRACKET | | | | 1 |
| 25 | US0050337AF | GUIDE PLATE | | | | 1 |
| 26 | 30220107 | SCREW | | | | 2 |
| 27 | SS4080310SP | SCREW 1/8-44 L=3.4 | | | | 2 |
| 28 | US50318AM56 | NEEDLE HEAD | FOR B56 | | | 1 |
| 29 | US50318AM64 | NEEDLE HEAD | FOR B64 | | | 1 |
| 30 | SD0380551SL | HINGE SCREW D= 3.80 H= 5.5 | | | | 1 |
| 31 | US00050357V | THREAD PRESSER PLATE | | | | 1 |
| 32 | US0050357AS | NEEDLE THREAD TENSION SPRING | | | | 1 |
| 33 | US00050357Y | NEEDLE THREAD PRESSER PLATE | | | | 1 |

HOW TO MAKE USE OF THIS PARTS LIST

1.As to "#01" and "#02" refer to the "Note" given at the bottom of the respective pages.

2.Codes on the "Qty" column

- Each numeral indicates the number of parts required.
- "0.1" and "2.5" indicate the length (in meters) of the respective parts.

3.Parentheses mean that the corresponding part is a subpart that constructs an assembly part.

4.Dotted lines on the Figures indicate assembly parts.

1. リストページの# 0 1、# 0 2の印は、ページ下の"注記"の説明を参照下さい。
2. 数量欄の数字は、個数を表し、0. 1、2. 5等の数値は、長さ（単位メートル）を表します。
3. 数量欄の（ ）は、組部品を構成している子部品であることを意味します。
4. イラストページの-----枠は、組構成であることを意味します。

NUMERICAL INDEX OF PARTS

| PART NO | PAGE | REF NO. |
|-------------|------|---------|
| 30098008 | 2 | 6 |
| 30121008 | 2 | 5 |
| 30220107 | 2 | 26 |
| NM6030250SC | 2 | 14 |
| PH0200102C0 | 2 | 15 |
| SD0380551SL | 2 | 30 |
| SM1020450TP | 2 | 16 |
| SM7040800SL | 2 | 18 |
| SM8030382TP | 2 | 19 |
| SS4080310SP | 2 | 27 |
| US00050357V | 2 | 31 |
| US00050357Y | 2 | 33 |
| US0018C1476 | 2 | 17 |
| US0050305BT | 2 | 1 |
| US0050326BR | 2 | 2 |
| US0050330EJ | 2 | 7 |
| US0050330EK | 2 | 8 |
| US0050330EL | 2 | 9 |
| US0050330EM | 2 | 10 |
| US0050330EN | 2 | 11 |
| US0050330EP | 2 | 12 |
| US0050330ET | 2 | 4 |
| US0050337AF | 2 | 25 |
| US0050337AT | 2 | 23 |
| US0050337AU | 2 | 22 |
| US0050357AS | 2 | 32 |
| US0050383AA | 2 | 24 |
| US50318AM56 | 2 | 28·29 |
| US50318AM64 | 2 | 28·29 |
| US50320BZ56 | 2 | 3 |
| US50324DE56 | 2 | 20·21 |
| US50324DE64 | 2 | 20·21 |