

MODEL : SC-800

List No : 1211-02

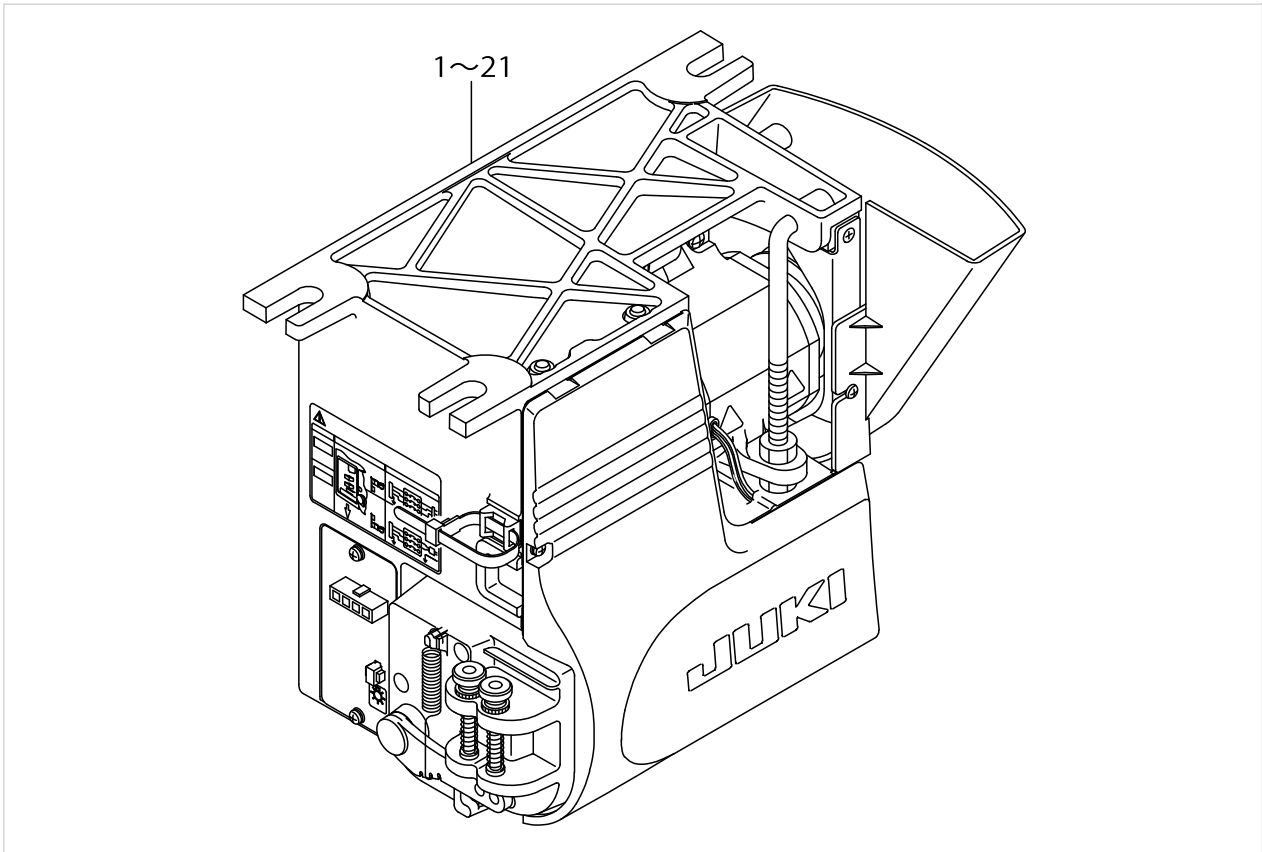
PARTS LIST

Published:09/10/2017

CONTENTS

STANDARD MOTOR COMBINATION LIST.....	1
PSC UNIT COMPONENTS (1)	3
PSC UNIT COMPONENTS (2)	5
ACCESSORIE PART COMPONENTS	9
OPTIONAL PART COMPONENTS.....	11
HOW TO MAKE USE OF THIS PARTS LIST	13

STANDARD MOTOR COMBINATION LIST



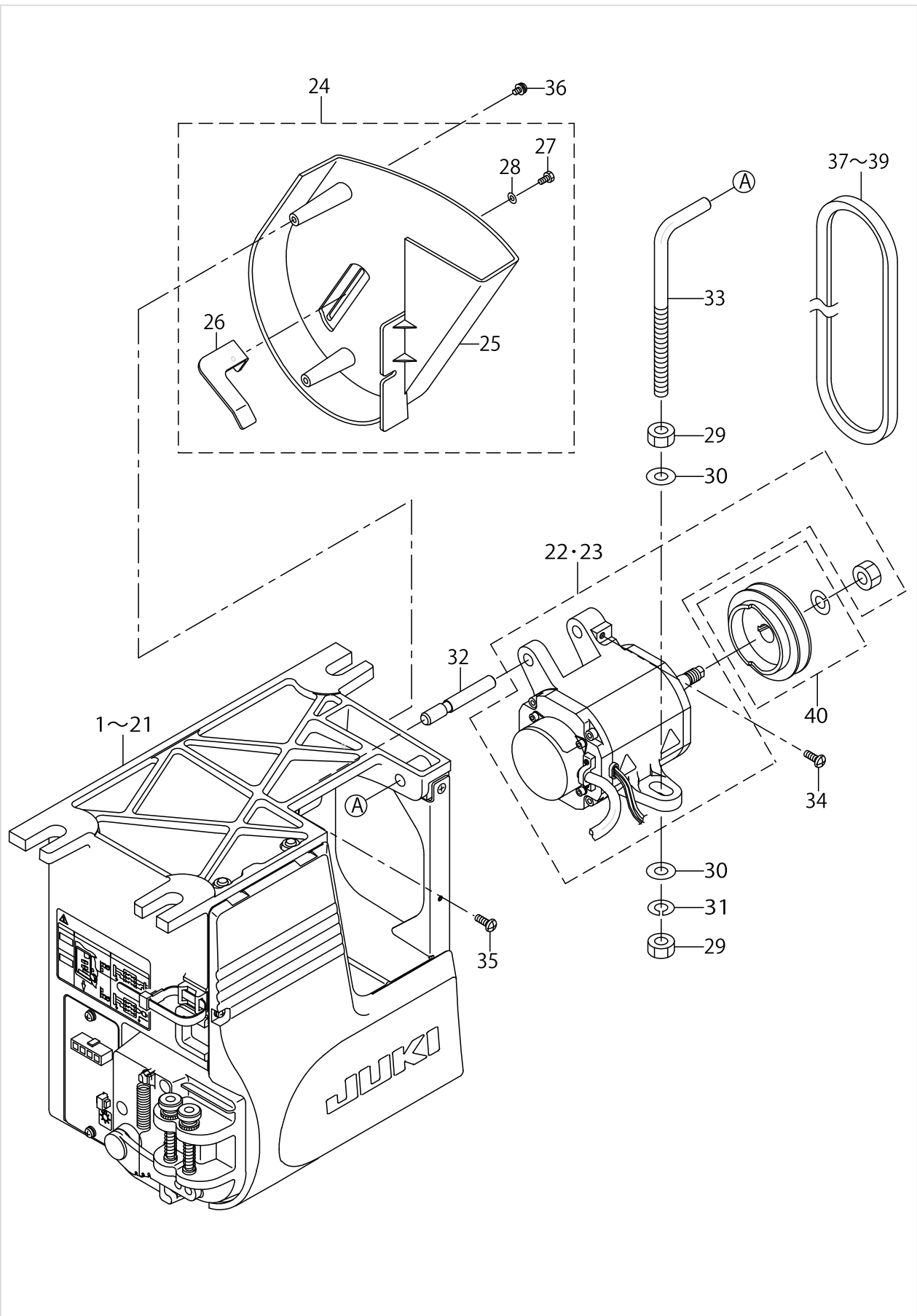
REF. NO.	PART NO.	BOX TYPE	EXPORT		JUS		CE	*OPTION		
			3Ø 200~240V	1Ø 200~240V	3Ø 200~240V	1Ø 100~120V	1Ø 220~240V	B	A	S
1	M2012461BA0	BB	○							○
2	M2112461BA0	BE	○					○		
3	M2212461BA0	BH	○					○		
4	M2012461GA0	GB	○							○
5	M2112461GA0	GE	○						○	
6	M2212461GA0	GH	○					○		
7	M2012461CA0	CB		○						○
8	M2112461CA0	CE		○					○	
9	M2212461CA0	CH		○				○		
10	M2012461HA0	HB		○						○
11	M2112461HA0	HE		○					○	
12	M2212461HA0	HH		○				○		
13	M2012461EA0	EB			○					○
14	M2112461EA0	EE			○				○	
15	M2212461EA0	EH			○			○		
16	M2012461FA0	FB				○				○
17	M2112461FA0	FE				○			○	
18	M2212461FA0	FH				○		○		
19	M2012461DA0	DB					○			○
20	M2112461DA0	DE					○		○	
21	M2212461DA0	DH					○	○		

*OPTION B: BIRD'S NEST PREVENTION, BOBBIN THREAD CLAMPLESS
 *OPTION A: STANDING WORK MACHINE, ED-2, BOBBIN THREAD REMAINING AMOUNT DETECTION
 *OPTION S: NOT PROVIDED.
 *BOX TYPE IS DESCRIBED AFTER MODEL NAME IN RATING PLATE.

STANDARD MOTOR COMBINATION LIST

No.	Parts No.	Parts name	Remarks	Level	Cons	Qty
1	M2012461BA0	PSC UNIT EXPORT PFL200-240V				1
2	M2112461BA0	PSC UNIT EXPORT PFL200-240V				1
3	M2212461BA0	PSC UNIT EXPORT PFL200-240V				1
4	M2012461GA0	PSC UNIT EXPORT PFL200-240V				1
5	M2112461GA0	PSC UNIT EXPORT PFL200-240V				1
6	M2212461GA0	PSC UNIT EXPORT PFL200-240V				1
7	M2012461CA0	PSC UNIT EXPORT PFL200-240V				1
8	M2112461CA0	PSC UNIT EXPORT PFL200-240V				1
9	M2212461CA0	PSC UNIT EXPORT PFL200-240V				1
10	M2012461HA0	PSC UNIT EXPORT PFL200-240V				1
11	M2112461HA0	PSC UNIT EXPORT PFL200-240V				1
12	M2212461HA0	PSC UNIT EXPORT PFL200-240V				1
13	M2012461EA0	PSC UNIT JUS PFL 200-240V				1
14	M2112461EA0	PSC UNIT JUS PFL 200-240V				1
15	M2212461EA0	PSC UNIT JUS PFL 200-240V				1
16	M2012461FA0	PSC UNIT JUS PFL 100-120V				1
17	M2112461FA0	PSC UNIT JUS PFL 100-120V				1
18	M2212461FA0	PSC UNIT JUS PFL 100-120V				1
19	M2012461DA0	PSC UNIT CE PFL 220-240V				1
20	M2112461DA0	PSC UNIT CE PFL 220-240V				1
21	M2212461DA0	PSC UNIT CE PFL 220-240V				1

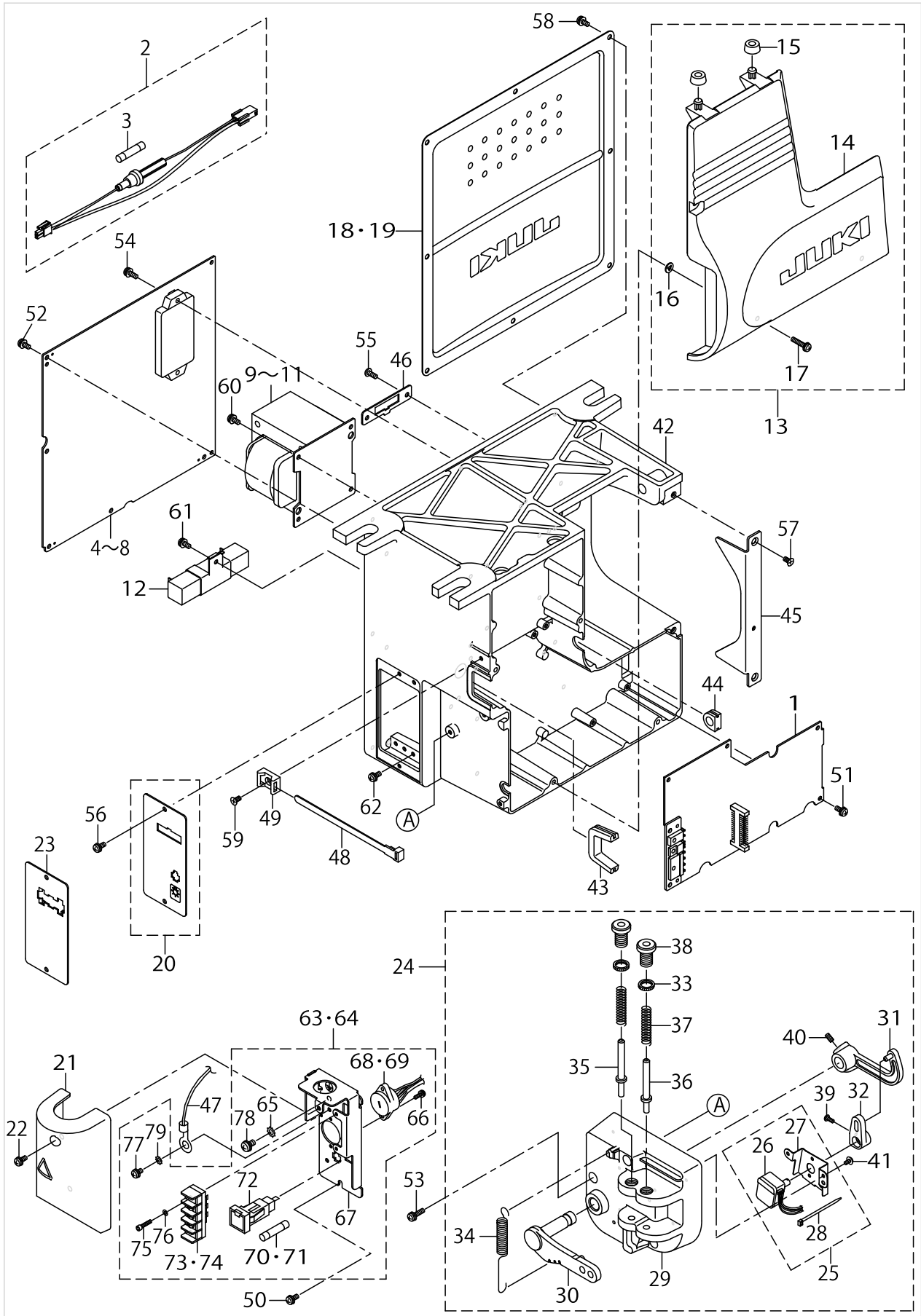
PSC UNIT COMPONENTS (1)



PSC UNIT COMPONENTS (1)

No.	Parts No.	Parts name	Remarks	Level	Cons	Qty
1	M2002461BA0	PSC UNIT EXPORT PFL 200-240V	FOR M2012-461-BA0			1
2	M2102461BA0	PSC UNIT EXPORT PFL 200-240V	FOR M2112-461-BA0			1
3	M2202461BA0	PSC UNIT EXPORT PFL 200-240V	FOR M2212-461-BA0			1
4	M2002461GA0	PSC UNIT EXPORT PFL 200-240V	FOR M2012-461-GA0			1
5	M2102461GA0	PSC UNIT EXPORT PFL 200-240V	FOR M2112-461-GA0			1
6	M2202461GA0	PSC UNIT EXPORT PFL 200-240V	FOR M2212-461-GA0			1
7	M2002461CA0	PSC UNIT EXPORT PFL 200-240V	FOR M2012-461-CA0			1
8	M2102461CA0	PSC UNIT EXPORT PFL 200-240V	FOR M2112-461-CA0			1
9	M2202461CA0	PSC UNIT EXPORT PFL 200-240V	FOR M2212-461-CA0			1
10	M2002461HA0	PSC UNIT EXPORT PFL 200-240V	FOR M2012-461-HA0			1
11	M2102461HA0	PSC UNIT EXPORT PFL 200-240V	FOR M2112-461-HA0			1
12	M2202461HA0	PSC UNIT EXPORT PFL 200-240V	FOR M2212-461-HA0			1
13	M2002461EA0	PSC UNIT JUS PFL 200-240V	FOR M2012-461-EA0			1
14	M2102461EA0	PSC UNIT JUS PFL 200-240V	FOR M2112-461-EA0			1
15	M2202461EA0	PSC UNIT JUS PFL 200-240V	FOR M2212-461-EA0			1
16	M2002461FA0	PSC UNIT JUS PFL 100-120V	FOR M2012-461-FA0			1
17	M2102461FA0	PSC UNIT JUS PFL 100-120V	FOR M2112-461-FA0			1
18	M2202461FA0	PSC UNIT JUS PFL 100-120V	FOR M2212-461-FA0			1
19	M2002461DA0	PSC UNIT CE PFL 230V	FOR M2012-461-DA0			1
20	M2102461DA0	PSC UNIT CE PFL 230V	FOR M2112-461-DA0			1
21	M2202461DA0	PSC UNIT CE PFL 230V	FOR M2212-461-DA0			1
22	M6001461CA0	MOTOR ASM.,C	FOR GENERAL EXPORT			1
23	M6001461DA0	MOTOR ASM.,D	FOR CE,JUS			1
24	M3601461AA0	PULLEY COVER A ASM.				1
25	M3601461000	PULLEY COVER		*		1
26	M3602461000	BELT STOPPER		*		1
27	SM9040803SF	SCREW M4X8		*		1
28	WP0430801SE	WASHER 4.3X9X0.8		*		1
29	NM6100011SF	NUT M10				2
30	WP1052001SE	WASHER 10.5X21X2				2
31	WS1020002KR	SPRING WASHER, M10				1
32	M4201461000	MOTOR SUPPORT SHAFT				1
33	M4202461000	MOTOR SUPPORT BOLT				1
34	SM4051405SE	SCREW M5 L=14				1
35	SM4051405SE	SCREW M5 L=14				1
36	SL4040891SC	SCREW M4 L=8				3
37	MTJVH00380A	V-BELT, 38 INCH				1
38	MTJVH00390A	V-BELT, 39 INCH				1
39	MTJVH00400A	V-BELT, 40 INCH				1
40	MTSP0070AA0	MOTOR PULLEY ASM. P.C.D. 70				1

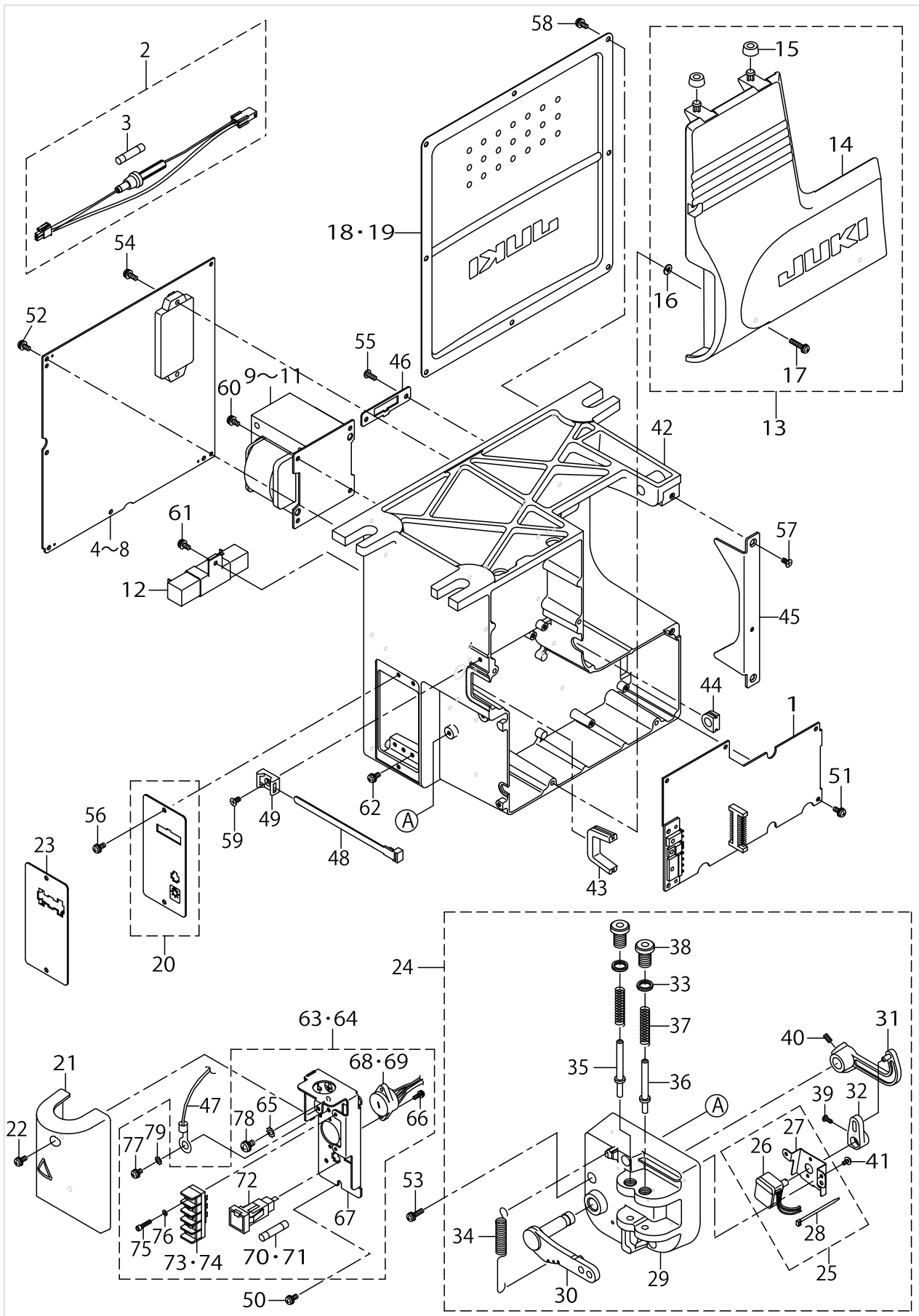
PSC UNIT COMPONENTS (2)



PSC UNIT COMPONENTS (2)

No.	Parts No.	Parts name	Remarks	Level	Cons	Qty
1	M8601471CAA	CTL CIRCUIT BOARD CA ASM.				1
2	M8511461AA0	LAMP FUSE A ASM.	FOR JUS			1
3	HF001400500	TIME LAG FUSE 5A	FOR JUS	*		1
4	M8604461AA0	PWR-U CIRCUIT BOARD A ASM.	FOR 3-PHASE 200~240V			1
5	M8603461AA0	PWR-E CIRCUIT BOARD A ASM.	FOR 1-PHASE 200~240V			1
6	M8605461AA0	PWR-C CIRCUIT BOARD A ASM.	FOR CE			1
7	M8607461AA0	PWR-S CIRCUIT BOARD A ASM.	FOR JUS 100~120V			1
8	M8604461BA0	PWR-U CIRCUIT BOARD B ASM.	FOR JUS 200~240V			1
9	M8501461BA0	POWER TRANSFORMER B ASM.	FOR 200V(EXCEPT CE)			1
10	M8501461CA0	POWER TRANSFORMER C ASM.	FOR JUS 100~120V			1
11	M8501461DA0	POWER TRANSFORMER D ASM.	FOR CE			1
12	M8502461AA0	RESISTOR A ASM.				1
13	M3201461AA0	BOX FRONT COVER A ASM.				1
14	M3201461000	FRONT COVER		*		1
15	M3202461000	BOX FRONT COVER SUPPORT RUBBER		*		2
16	M8002430000	STOPPER		*		3
17	SL4042091SC	SCREW M4X0.7 L=20		*		3
18	M3401461000	BOX REAR PANEL				1
19	M3401461BA0	BOX REAR COVER B ASM.	FOR CE,JUS			1
20	M3802461AA0	CONNECTOR FIXED PLATE A ASM.	FOR GENERAL EXPORT			1
21	M3806461AA0	TERMINAL BASE COVER A ASM.	FOR JUS			1
22	SL4041081SC	SCREW M4 L=10	FOR JUS			2
23	M3804461000	CONNECTOR FIXED PLATE(CE)	FOR CE			1
24	M4001461BA0	PEDAL SENSOR B ASM.				1
25	M4006461AA0	SENSOR FIXED PLATE A ASM.		*		1
26	M8508461AA0	SENSOR A ASM.		*		1
27	M4006461000	SENSOR INSTALLING PLATE		*		1
28	EA9500B0100	CABLE BAND		*		1
29	M4001461000	PEDAL SENSOR BASE		*		1
30	M4002461000	PEDAL LEVER		*		1
31	M4004461000	PEDAL RING		*		1
32	M4005461000	VOLUME LINK		*		1
33	M2010110000	ADJUST NUT		*		2
34	M4007351000	FRONT SPRING		*		1
35	M4008351000A	SPRING SHAFT A		*		1
36	M4009351000A	SPRING SHAFT B		*		1
37	M4011351000	SPRING B		*		2
38	M4012351000	ADJUST SCREW		*		2
39	SM4030801SF	SCREW M3X0.5 L=8		*		1
40	SM8040802TP	SCREW M4X8		*		2
41	SV4030601SR	SCREW M3 L=6		*		2
42	M3001461000	ELECTRICAL BOX				1
43	M3002461000	RUBBER BUSH A				1
44	M1014110000	CORD BUSH B				1
45	M3801461000	PULLEY COVER INSTALLING PLATE				1
46	M3803461000	MOTOR CONNECTOR FIXED PLATE				1
47	M8503461DA0	FG CORD D ASM.	FOR JUS			1

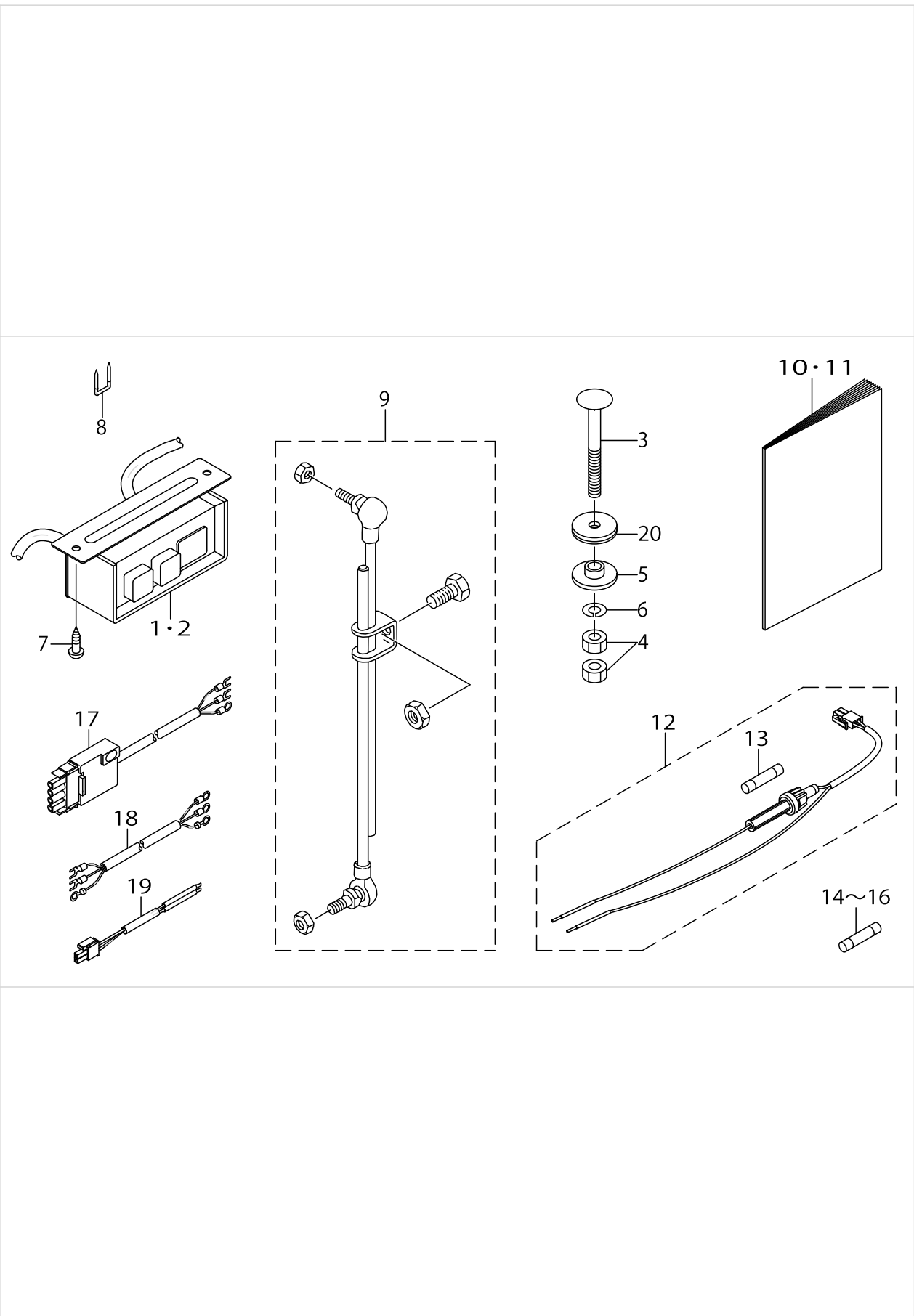
PSC UNIT COMPONENTS (2)



PSC UNIT COMPONENTS (2)

No.	Parts No.	Parts name	Remarks	Level	Cons	Qty
48	HX00292000A	CONNECTING PART				1
49	HX004540000	TIE MOUNT				1
50	SL4041081SF	SCREW M4 L=10	FOR JUS			2
51	SL4041081SF	SCREW M4 L=10				6
52	SL4041081SF	SCREW M4 L=10				5
53	SL4041681SF	SCREW M4 L=16				3
54	SL4041281SF	SCREW M4 L=12				2
55	SL4041081SF	SCREW M4 L=10				2
56	SL4041081SC	SCREW M4 L=10				2
57	SM1040801SC	SCREW M4X0.7 L=8				2
58	SL4041081SC	SCREW M4 L=10				8
59	SM1040801SC	SCREW M4X0.7 L=8				1
60	SL4041081SF	SCREW M4 L=10				4
61	SL4041081SF	SCREW M4 L=10				1
62	SL4041091SE	SCREW M4 L=10				4
63	M3805461BA0	TERMINAL BASE B ASM.	FOR JUS 100~120V			1
64	M3805461AA0	TERMINAL BASE A ASM.	FOR JUS 200~240V			1
65	WT0530001KN	TOOTHED LOCK WASHER	FOR JUS	*		1
66	SL4031081SF	SCREW M3 L=10	FOR JUS	*		2
67	M3805461000	TERMINAL BASE	FOR JUS	*		1
68	M8510461BA0	VOLTAGE SELECTOR B ASM.	FOR JUS 100~120V	*		1
69	M8510461AA0	VOLTAGE SELECTOR A ASM.	FOR JUS 200~240V	*		1
70	HF0079040P0	FUSE 4A	FOR JUS 100~120V	*		1
71	HF0079020P0	FUSE 2A	FOR JUS 200~240V	*		1
72	HF009511000	FUSE HOLDER	FOR JUS	*		1
73	HK04905003B	TERMINAL BASE	FOR JUS 200~240V	*		1
74	HK04905002A	TERMINAL BASE 2P	FOR JUS 100~120V	*		1
75	SM6031402TP	SCREW	FOR JUS	*		2
76	WS0310002KP	SPRING WASHER	FOR JUS	*		2
77	SL4040885SH	SCREW M4 L=8	FOR JUS	*		1
78	SL4051085SH	SCREW M5X10	FOR JUS	*		1
79	WT0430001KN	TOOTHED WASHER	FOR JUS	*		1

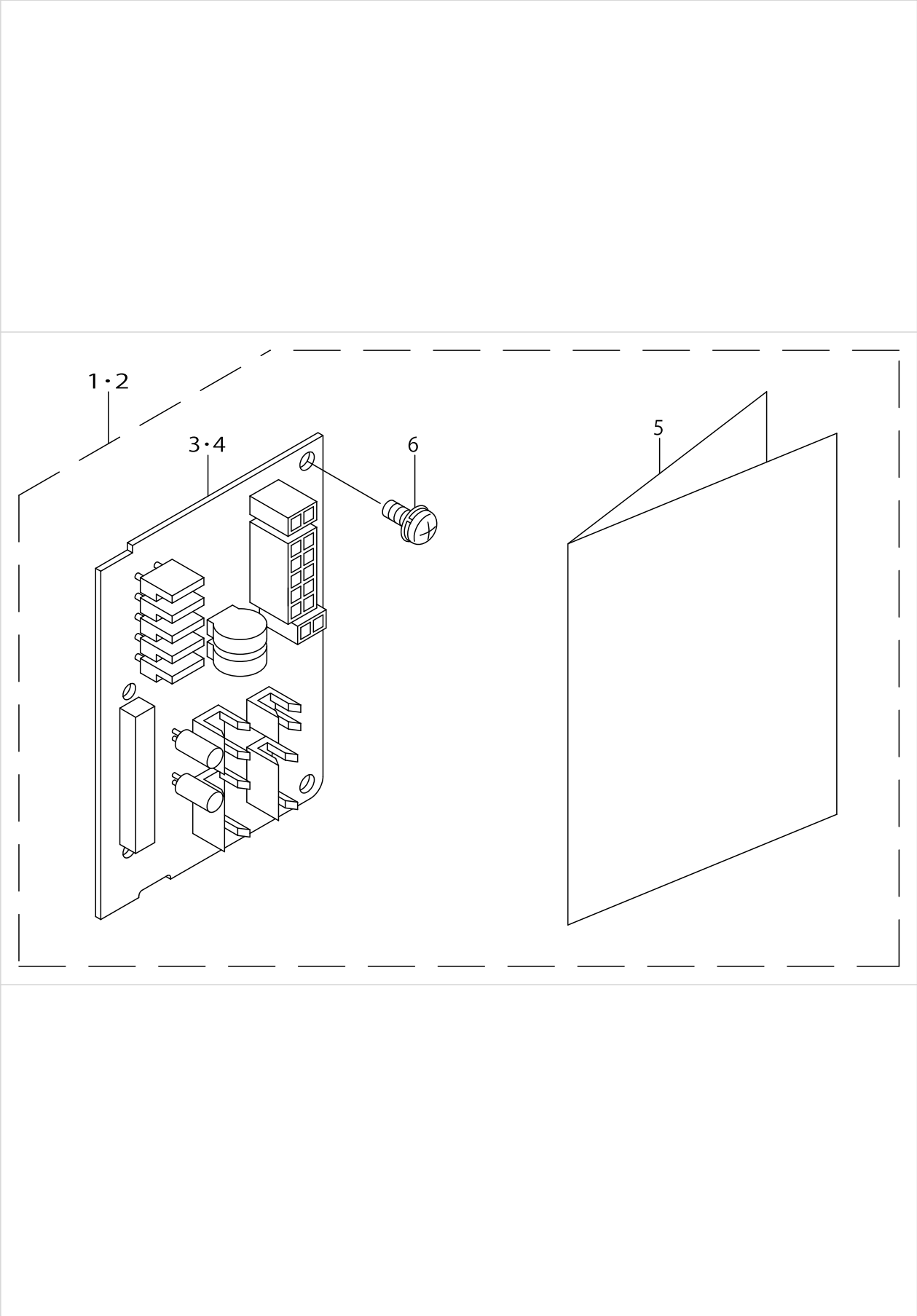
ACCESSORIE PART COMPONENTS



ACCESSORIE PART COMPONENTS

No.	Parts No.	Parts name	Remarks	Level	Cons	Qty
1	M6101461AA0	POWER SWITCH A ASM.	FOR 3-PHASE 200~240V			1
2	M6101461CA0	POWER SWITCH C ASM.	FOR 1-PHASE 200~240V			1
3	D8211555D00	BOLT				3
4	NM6080002SC	NUT M8				6
5	M4205461000	WASHER				3
6	WS0820002KR	SPRING WASHER, M8				3
7	SK3512001SF	WOOD SCREW				2
8	MAO11532000	CORD STAPLE				5
9	D7114555BAB	CONNECTING ROD ASM. (B)				1
10	29298205	SC-800 INSTRUCTION MANUAL				1
11	29298304	SC-800 INSTRUCTION MANUAL				1
12	M8525351AA0	LAMP FUSE HOLDER ASM., A				1
13	M9644110000	FUSE 8A		*		1
14	HF0079020P0	FUSE 2A	FOR 200~240V			1
15	HF0079040P0	FUSE 4A	FOR JUS 100~120V			1
16	HF0078020P0	FUSE 2A	FOR CE			1
17	M6105461DAA	PSC UNIT CABLE ASM.(CE)	FOR CE			1
18	M6102461DAA	AC INPUT CABLE ASM.(CE)	FOR CE			1
19	M8526351AA0	LAMP CORD ASM., A	FOR JUS			1
20	M4206461000					3

OPTIONAL PART COMPONENTS



OPTIONAL PART COMPONENTS

No.	Parts No.	Parts name	Remarks	Level	Cons	Qty
1	M97014610A0	SC-800 OPTION UNIT A	OPTION UNIT A			1
2	M97024610A0	SC-800 OPTION UNIT B	OPTION UNIT B			1
3	M8606461AA0	OP CIRCUIT BOARD ASM. A	OPTION UNIT A	*		1
4	M8606461BA0	OP CIRCUIT BOARD ASM.,B	OPTION UNIT B	*		1
5	29298403	INSTRUCTION MANUAL		*		1
6	SL4041081SF	SCREW M4 L=10		*		2

HOW TO MAKE USE OF THIS PARTS LIST

1.As to "#01" and "#02" refer to the "Note" given at the bottom of the respective pages.

2.Codes on the "Qty" column

- Each numeral indicates the number of parts required.
- "0.1" and "2.5" indicate the length (in meters) of the respective parts.

3.Parentheses mean that the corresponding part is a subpart that constructs an assembly part.

4.Dotted lines on the Figures indicate assembly parts.

1. リストページの# 0 1、# 0 2の印は、ページ下の"注記"の説明を参照下さい。
2. 数量欄の数字は、個数を表し、0. 1、2. 5等の数値は、長さ（単位メートル）を表します。
3. 数量欄の（ ）は、組部品を構成している子部品であることを意味します。
4. イラストページの-----枠は、組構成であることを意味します。

NUMERICAL INDEX OF PARTS

PART NO	PAGE	REF NO.	PART NO	PAGE	REF NO.	PART NO	PAGE	REF NO.
29298205	10	10·11	M2112461GA0	2	1~21	M4012351000	6	38
29298304	10	10·11	M2112461HA0	2	1~21	M4201461000	4	32
29298403	12	5	M2202461BA0	4	1~21	M4202461000	4	33
D7114555BAB	10	9	M2202461CA0	4	1~21	M4205461000	10	5
D8211555D00	10	3	M2202461DA0	4	1~21	M4206461000	10	20
EA9500B0100	6	28	M2202461EA0	4	1~21	M6001461CA0	4	22·23
HF001400500	6	3	M2202461FA0	4	1~21	M6001461DA0	4	22·23
HF0078020P0	10	14~16	M2202461GA0	4	1~21	M6101461AA0	10	1·2
HF0079020P0	8	70·71	M2202461HA0	4	1~21	M6101461CA0	10	1·2
HF0079020P0	10	14~16	M2212461BA0	2	1~21	M6102461DAA	10	18
HF0079040P0	8	70·71	M2212461CA0	2	1~21	M6105461DAA	10	17
HF0079040P0	10	14~16	M2212461DA0	2	1~21	M8002430000	6	16
HF009511000	8	72	M2212461EA0	2	1~21	M8501461BA0	6	9~11
HK04905002A	8	73·74	M2212461FA0	2	1~21	M8501461CA0	6	9~11
HK04905003B	8	73·74	M2212461GA0	2	1~21	M8501461DA0	6	9~11
HX00292000A	8	48	M2212461HA0	2	1~21	M8502461AA0	6	12
HX004540000	8	49	M3001461000	6	42	M8503461DA0	6	47
M1014110000	6	44	M3002461000	6	43	M8508461AA0	6	26
M2002461BA0	4	1~21	M3201461000	6	14	M8510461AA0	8	68·69
M2002461CA0	4	1~21	M3201461AA0	6	13	M8510461BA0	8	68·69
M2002461DA0	4	1~21	M3202461000	6	15	M8511461AA0	6	2
M2002461EA0	4	1~21	M3401461000	6	18·19	M8525351AA0	10	12
M2002461FA0	4	1~21	M3401461BA0	6	18·19	M8526351AA0	10	19
M2002461GA0	4	1~21	M3601461000	4	25	M8601471CAA	6	1
M2002461HA0	4	1~21	M3601461AA0	4	24	M8603461AA0	6	4~8
M2010110000	6	33	M3602461000	4	26	M8604461AA0	6	4~8
M2012461BA0	2	1~21	M3801461000	6	45	M8604461BA0	6	4~8
M2012461CA0	2	1~21	M3802461AA0	6	20	M8605461AA0	6	4~8
M2012461DA0	2	1~21	M3803461000	6	46	M8606461AA0	12	3·4
M2012461EA0	2	1~21	M3804461000	6	23	M8606461BA0	12	3·4
M2012461FA0	2	1~21	M3805461000	8	67	M8607461AA0	6	4~8
M2012461GA0	2	1~21	M3805461AA0	8	63·64	M9644110000	10	13
M2012461HA0	2	1~21	M3805461BA0	8	63·64	M97014610A0	12	1·2
M2102461BA0	4	1~21	M3806461AA0	6	21	M97024610A0	12	1·2
M2102461CA0	4	1~21	M4001461000	6	29	MAO11532000	10	8
M2102461DA0	4	1~21	M4001461BA0	6	24	MTJVH00380A	4	37~39
M2102461EA0	4	1~21	M4002461000	6	30	MTJVH00390A	4	37~39
M2102461FA0	4	1~21	M4004461000	6	31	MTJVH00400A	4	37~39
M2102461GA0	4	1~21	M4005461000	6	32	MTSP0070AA0	4	40
M2102461HA0	4	1~21	M4006461000	6	27	NM6080002SC	10	4
M2112461BA0	2	1~21	M4006461AA0	6	25	NM6100011SF	4	29
M2112461CA0	2	1~21	M4007351000	6	34	SK3512001SF	10	7
M2112461DA0	2	1~21	M4008351000A	6	35	SL4031081SF	8	66
M2112461EA0	2	1~21	M4009351000A	6	36	SL4040885SH	8	77
M2112461FA0	2	1~21	M4011351000	6	37	SL4040891SC	4	36

NUMERICAL INDEX OF PARTS

PART NO	PAGE	REF NO.
SL4041081SC	6	58
SL4041081SC	8	58
SL4041081SF	8	61
SL4041081SF	12	6
SL4041091SE	8	62
SL4041281SF	8	54
SL4041681SF	8	53
SL4042091SC	6	17
SL4051085SH	8	78
SM1040801SC	8	59
SM4030801SF	6	39
SM4051405SE	4	35
SM6031402TP	8	75
SM8040802TP	6	40
SM9040803SF	4	27
SV4030601SR	6	41
WP0430801SE	4	28
WP1052001SE	4	30
WS0310002KP	8	76
WS0820002KR	10	6
WS1020002KR	4	31
WT0430001KN	8	79
WT0530001KN	8	65