

MODEL : T050  
List No : 1162-01

# PARTS LIST

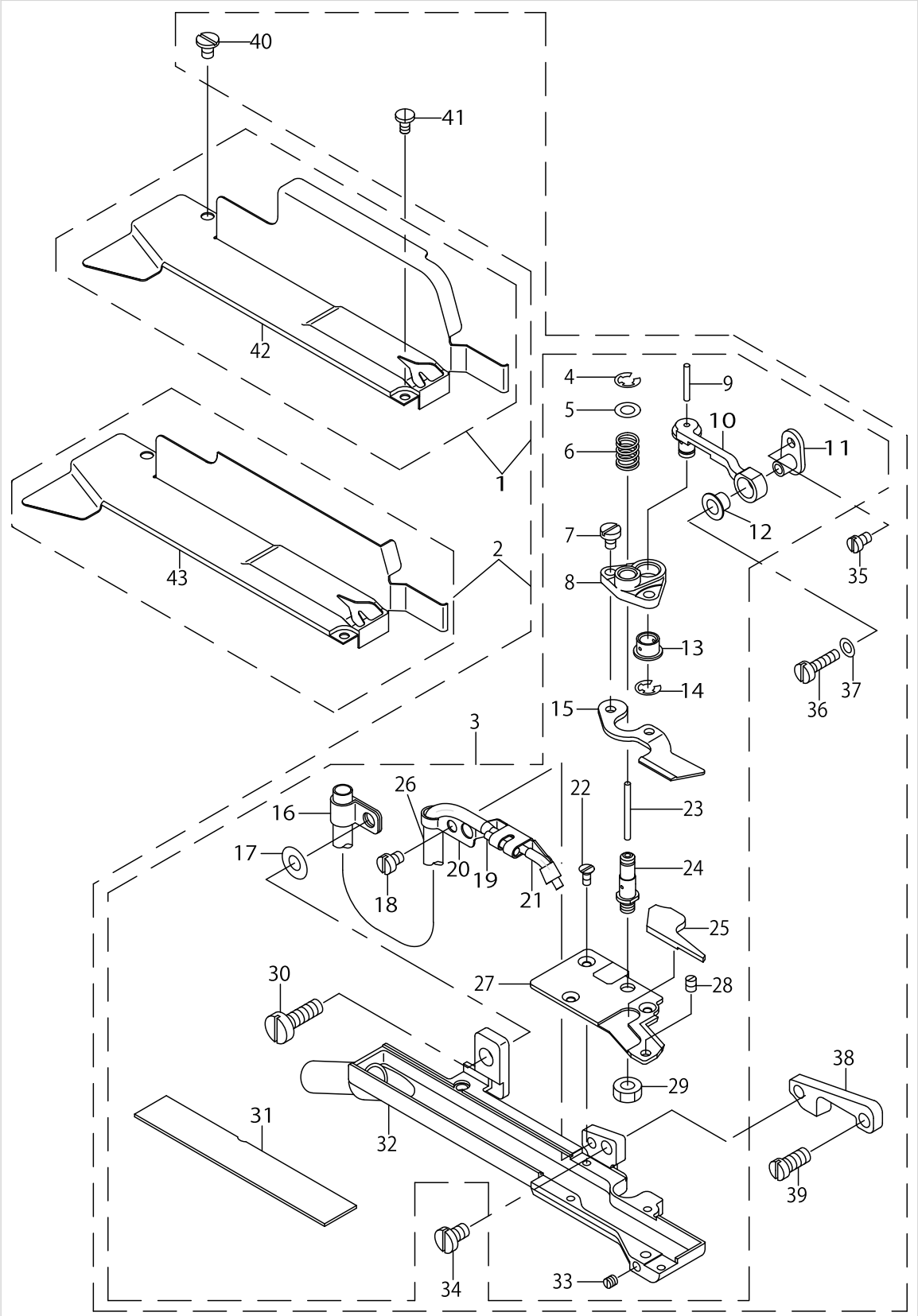
Published:09/10/2017

## CONTENTS

---

PNEUMATIC FLAT CUTTER (T050) .....	1
HOW TO MAKE USE OF THIS PARTS LIST .....	3

PNEUMATIC FLAT CUTTER (T050)



PNEUMATIC FLAT CUTTER (T050)

No.	Parts No.	Parts name	Remarks	Level	Cons	Qty
1	MAT050010A0	PNEUMATIC FLAT CUTTER.MOG-3716	FOR MOG-3716,MO-6916G			1
2	MAT050010B0	PNEUMATIC FLAT CUTTER.MOJ-3916	FOR MOJ-3916,MO-6916J			1
3	MAT050020B0	KNIFE PLATE ASM.		*		1
4	RE0300000K0	E-RING 3		*		1
5	WP0450000SD	WASHER 4.5X8X0.5		*		1
6	MAT03509000	SPRING		*		1
7	SS7080510TP	SCREW 1/8-44 L=4.5		*		2
8	MAT03508000	MOVING KNIFF BRACKET		*		1
9	CQ202000000	OIL WICK		*		0.1
10	MAT05006000	KNIFE DRIVING RINK		*		1
11	MAT03512000	KNIFE DRIVING RINK BRACKET		*		1
12	MAT03510000	KNIFE DRIVING RINK PIECE		*		1
13	MAT03510000	KNIFE DRIVING RINK PIECE		*		1
14	RE0400000K0	E-RING 4		*		1
15	MAT03506000	MOVING KNIFE		*		1
16	MAT03516000	OIL TUBE HOLDER		*		1
17	WP0502616SD	WASHER		*		1
18	SS7090520TP	SCREW 9/64-40 L= 4.5		*		1
19	CQ2500000F0	OIL WICK		*		1
20	MAT05007000	OIL TUBE ASM.		*		1
21	MAT050080A0	OIL TUBE ASM.		*		1
22	SS1060610SP	SCREW 3/32-56 L=5.5		*		3
23	CQ202000000	OIL WICK		*		0.1
24	MAT03507000	KNIFE BAR DRIVING SHAFT		*		1
25	MAT03517000	AIR LEAK STOPPER		*		1
26	BP400000000	VINYL TUBE, WHITE D=4		*		0.1
27	MAT03505000	FIXED KNIFE		*		1
28	SS8080610SP	SCREW 1/8-44 L=5.5		*		1
29	NS6110310SP	NUT 11/64-40		*		1
30	SS7121410TP	SCREW 3/16-28 L=14		*		1
31	MAT03518000	KNIFE PLATE COVER		*		1
32	MAT050020A0	KNIFE PLATE ASM.		*		1
33	SS8080310TP	SCREW 1/8-44 L=2.8		*		1
34	SS7110840SP	SCREW 11/64-40 L=7.8		*		1
35	SS7080520SP	SCREW 1/8-44 L=4.9		*		1
36	SS7081310SP	SCREW 1/8-44 L=12.5		*		1
37	WP0371016SD	WASHER 3.7X8X1		*		1
38	MAT05005000	KNIFE PLATE		*		1
39	SS7120910SP	SCREW 3/16-28 L=9		*		1
40	SS6090520SP	SCREW 9/64-40 L= 5.0		*		1
41	SS7060310SP	SCREW 3/32-56 L=3		*		1
42	MAT05011000	KNIFE BASE COVER		*		1
43	MAT05012000	KNIFE BASE COVER		*		1

## HOW TO MAKE USE OF THIS PARTS LIST

1.As to "#01" and "#02" refer to the "Note" given at the bottom of the respective pages.

2.Codes on the "Qty" column

- Each numeral indicates the number of parts required.
- "0.1" and "2.5" indicate the length (in meters) of the respective parts.

3.Parentheses mean that the corresponding part is a subpart that constructs an assembly part.

4.Dotted lines on the Figures indicate assembly parts.

1. リストページの# 0 1、# 0 2の印は、ページ下の"注記"の説明を参照下さい。
2. 数量欄の数字は、個数を表し、0. 1、2. 5等の数値は、長さ（単位メートル）を表します。
3. 数量欄の（ ）は、組部品を構成している子部品であることを意味します。
4. イラストページの-----枠は、組構成であることを意味します。

## NUMERICAL INDEX OF PARTS

PART NO	PAGE	REF NO.
BP400000000	2	26
CQ202000000	2	23
CQ2500000F0	2	19
MAT03505000	2	27
MAT03506000	2	15
MAT03507000	2	24
MAT03508000	2	8
MAT03509000	2	6
MAT03510000	2	13
MAT03512000	2	11
MAT03516000	2	16
MAT03517000	2	25
MAT03518000	2	31
MAT050010A0	2	1
MAT050010B0	2	2
MAT050020A0	2	32
MAT050020B0	2	3
MAT05005000	2	38
MAT05006000	2	10
MAT05007000	2	20
MAT050080A0	2	21
MAT05011000	2	42
MAT05012000	2	43
NS6110310SP	2	29
RE0300000K0	2	4
RE0400000K0	2	14
SS1060610SP	2	22
SS6090520SP	2	40
SS7060310SP	2	41
SS7080510TP	2	7
SS7080520SP	2	35
SS7081310SP	2	36
SS7090520TP	2	18
SS7110840SP	2	34
SS7120910SP	2	39
SS7121410TP	2	30
SS8080310TP	2	33
SS8080610SP	2	28
WP0371016SD	2	37
WP0450000SD	2	5
WP0502616SD	2	17