

MODEL : T048  
List No : 1161-01

# PARTS LIST

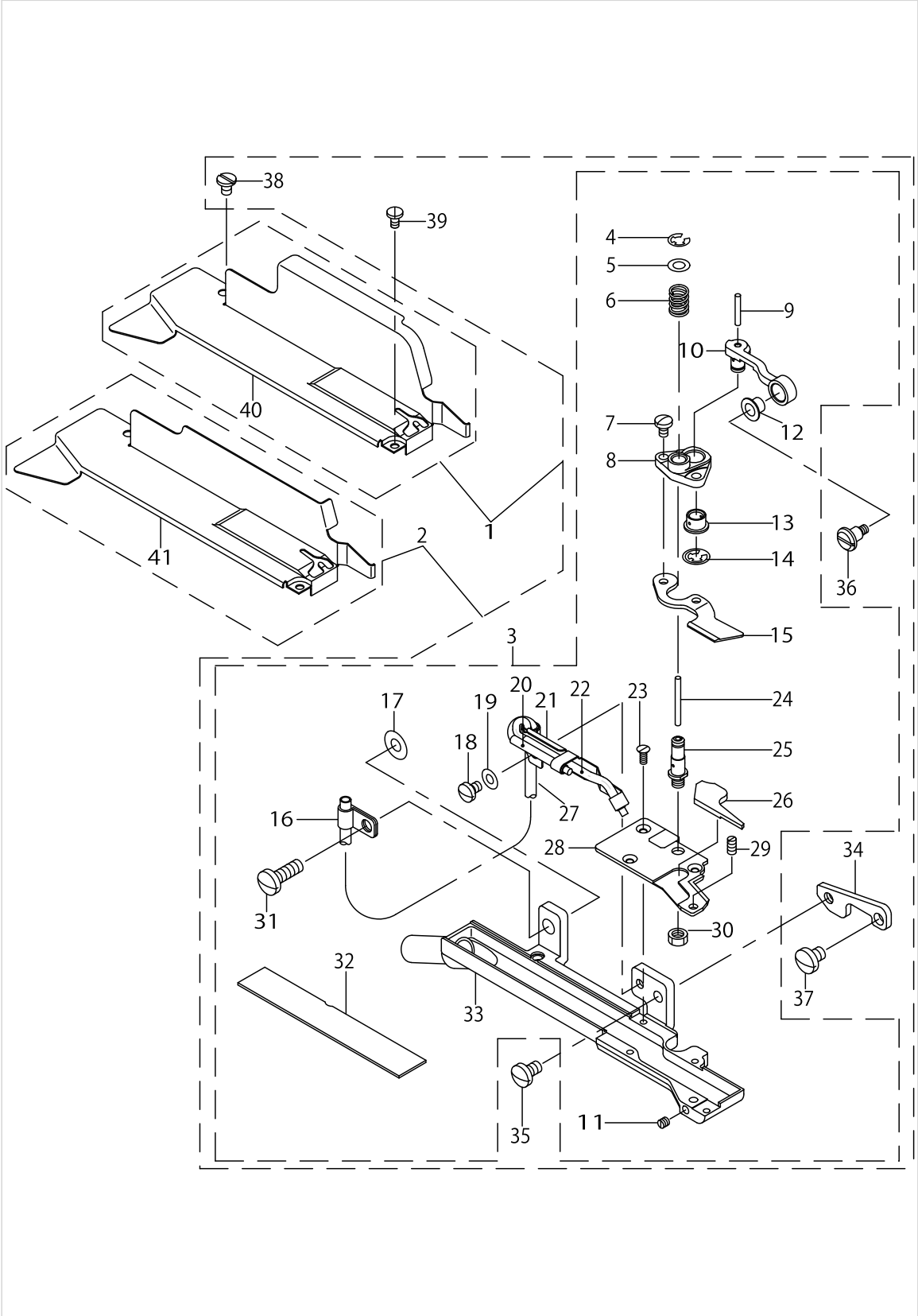
Published:09/10/2017

## CONTENTS

---

PNEUMATIC FLAT CUTTER (T048) .....	1
HOW TO MAKE USE OF THIS PARTS LIST .....	3

PNEUMATIC FLAT CUTTER (T048)



PNEUMATIC FLAT CUTTER (T048)

No.	Parts No.	Parts name	Remarks	Level	Cons	Qty
1	MAT048010A0	AIR TYPE FLAT CUTTER ASM.	FOR MOG-3704,MOG-3714, MO-6904G,MO-6914G			1
2	MAT048010B0	AIR TYPE FLAT CUTTER ASM.	FOR MOJ-3904,MOJ-3914, MO-6904J,MO-6914J			1
3	MAT047010A0	KNIFE BASE ASM.		*		1
4	RE0400000K0	E-RING 4		*		1
5	WP0450000SD	WASHER 4.5X8X0.5		*		1
6	MAT03509000	SPRING		*		1
7	SS7080510TP	SCREW 1/8-44 L=4.5		*		2
8	MAT04704000	MOVING KNIFE FITTING BASE		*		1
9	CQ202000000	OIL WICK		*		0.01
10	MAT04703000	MOVING KNIFE LINK		*		1
11	SS8080310TP	SCREW 1/8-44 L=2.8		*		1
12	MAT03510000	KNIFE DRIVING RINK PIECE		*		1
13	MAT03510000	KNIFE DRIVING RINK PIECE		*		1
14	RE0400000K0	E-RING 4		*		1
15	MAT03506000	MOVING KNIFE		*		1
16	MAT03516000	OIL TUBE HOLDER		*		1
17	WP0502616SD	WASHER		*		1
18	SS7090520TP	SCREW 9/64-40 L= 4.5		*		1
19	WP0371016SD	WASHER 3.7X8X1		*		1
20	MAT035140A0	OIL TUBE ASM.		*		1
21	MAT04104000	OIL TUBE HOLDER		*		1
22	MAT035150A0	OIL TUBE ASM.		*		1
23	SS1060610SP	SCREW 3/32-56 L=5.5		*		3
24	CQ202000000	OIL WICK		*		0.02
25	MAT03507000	KNIFE BAR DRIVING SHAFT		*		1
26	MAT03517000	AIR LEAK STOPPER		*		1
27	BP400000000	VINYL TUBE, WHITE D=4		*		0.09
28	MAT03505000	FIXED KNIFE		*		1
29	SS8080610SP	SCREW 1/8-44 L=5.5		*		1
30	NS6110310SP	NUT 11/64-40		*		1
31	SS7121410TP	SCREW 3/16-28 L=14		*		1
32	MAT03518000	KNIFE PLATE COVER		*		1
33	MAT041030A0	KNIFE PLATE ASM.		*		1
34	MAT04705000	KNIFE PLATE FITTING PLATE		*		1
35	SS7110740TP	SCREW 11/64-40 L=7		*		1
36	MAT04706000	SUPPORT SHAFT		*		1
37	SS7120640SP	SCREW 3/16-28 L=6		*		1
38	SS6090520SP	SCREW 9/64-40 L= 5.0		*		1
39	SS7060310SP	SCREW 3/32-56 L=3		*		1
40	MAT04802000	KNIFE BASE COVER		*		1
41	MAT04803000	KNIFE BASE COVER		*		1

## HOW TO MAKE USE OF THIS PARTS LIST

1.As to "#01" and "#02" refer to the "Note" given at the bottom of the respective pages.

2.Codes on the "Qty" column

- Each numeral indicates the number of parts required.
- "0.1" and "2.5" indicate the length (in meters) of the respective parts.

3.Parentheses mean that the corresponding part is a subpart that constructs an assembly part.

4.Dotted lines on the Figures indicate assembly parts.

1. リストページの# 0 1、# 0 2の印は、ページ下の"注記"の説明を参照下さい。
2. 数量欄の数字は、個数を表し、0. 1、2. 5等の数値は、長さ（単位メートル）を表します。
3. 数量欄の（ ）は、組部品を構成している子部品であることを意味します。
4. イラストページの-----枠は、組構成であることを意味します。

## NUMERICAL INDEX OF PARTS

PART NO	PAGE	REF NO.
BP400000000	2	27
CQ202000000	2	24
MAT03505000	2	28
MAT03506000	2	15
MAT03507000	2	25
MAT03509000	2	6
MAT03510000	2	13
MAT035140A0	2	20
MAT035150A0	2	22
MAT03516000	2	16
MAT03517000	2	26
MAT03518000	2	32
MAT041030A0	2	33
MAT04104000	2	21
MAT047010A0	2	3
MAT04703000	2	10
MAT04704000	2	8
MAT04705000	2	34
MAT04706000	2	36
MAT048010A0	2	1
MAT048010B0	2	2
MAT04802000	2	40
MAT04803000	2	41
NS6110310SP	2	30
RE0400000K0	2	14
SS1060610SP	2	23
SS6090520SP	2	38
SS7060310SP	2	39
SS7080510TP	2	7
SS7090520TP	2	18
SS7110740TP	2	35
SS7120640SP	2	37
SS7121410TP	2	31
SS8080310TP	2	11
SS8080610SP	2	29
WP0371016SD	2	19
WP0450000SD	2	5
WP0502616SD	2	17