

MODEL : MOJ-3900 SUBCLASSES

List No : 1155-02

# PARTS LIST

Published:09/10/2017

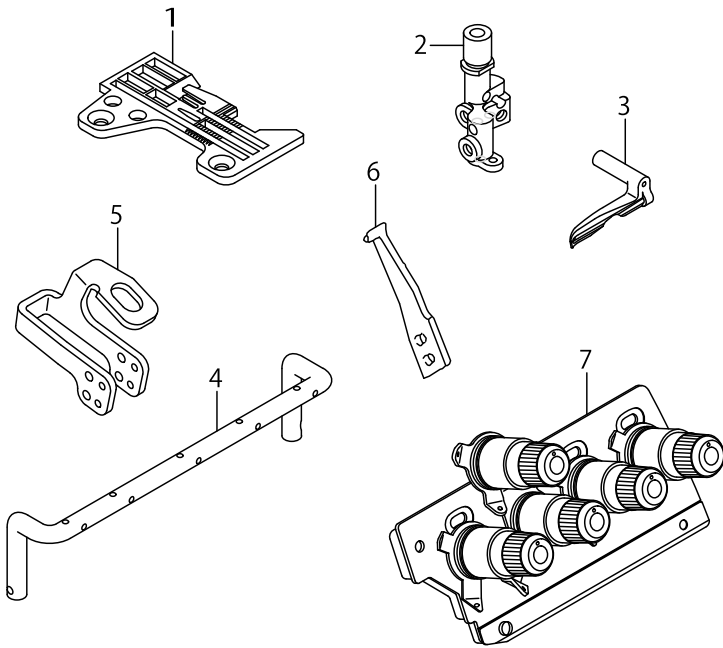
## CONTENTS

---

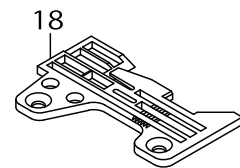
|  |   |
|--|---|
| MOJ-3900 SUBCLASSES .....                | 1 |
| HOW TO MAKE USE OF THIS PARTS LIST ..... | 3 |

MOJ-3900 SUBCLASSES

MOJ-3943-FDE6-600  
MOJ-3943E-FDE6-600



MOG-3916-FF6-700  
MOG-3916E-FF6-700



MOJ-3900 SUBCLASSES

| No. | Parts No.   | Parts name               | Remarks | Level | Cons | Qty |
|-----|-------------|--------------------------|---------|-------|------|-----|
| 1   | R4612J0EL02 | THROAT PLATE             |         |       |      | 1   |
| 2   | 12379111    | DOUBLE-RING NEEDLE CLAMP |         |       |      | 1   |
| 3   | 12383907    | UPPER ROOPER             |         |       |      | 1   |
| 4   | 12128401    | THREAD GUIDE             |         |       |      | 1   |
| 5   | 12111308    | THREAD GUIDE, 2-NEEDLE   |         |       |      | 1   |
| 6   | 12021200    | NEEDLE HOLDER (D)        |         |       |      | 1   |
| 7   | 12388351    | THREAD GUIDE PLATE       |         |       |      | 1   |
| 8   | 12389359    | PRESSER FOOT ASM.        |         |       |      | 1   |
| 9   | WP0371026SD | WASHER 3.7X7X1           |         | *     |      | 1   |
| 10  | 12389300    | FRONT PRESSER            |         | *     |      | 1   |
| 11  | 12023305    | REAR PRESSER FOOT        |         | *     |      | 1   |
| 12  | 12024303    | HINGE ARM                |         | *     |      | 1   |
| 13  | 12024402    | PRESSER FOOT HINGE       |         | *     |      | 1   |
| 14  | 11929403    | PRESSER FOOT SPRING      |         | *     |      | 1   |
| 15  | 12024501    | HINGE PIN                |         | *     |      | 3   |
| 16  | SS6090650SP | SCREW 9/64-40 L=6        |         | *     |      | 1   |
| 17  | SS7080520SP | SCREW 1/8-44 L=4.9       |         | *     |      | 1   |
| 18  | R4612J0FL00 | THROAT PLATE             |         |       |      | 1   |

## HOW TO MAKE USE OF THIS PARTS LIST

1.As to "#01" and "#02" refer to the "Note" given at the bottom of the respective pages.

2.Codes on the "Qty" column

- Each numeral indicates the number of parts required.
- "0.1" and "2.5" indicate the length (in meters) of the respective parts.

3.Parentheses mean that the corresponding part is a subpart that constructs an assembly part.

4.Dotted lines on the Figures indicate assembly parts.

1. リストページの# 0 1、# 0 2の印は、ページ下の"注記"の説明を参照下さい。
2. 数量欄の数字は、個数を表し、0. 1、2. 5等の数値は、長さ（単位メートル）を表します。
3. 数量欄の（ ）は、組部品を構成している子部品であることを意味します。
4. イラストページの-----枠は、組構成であることを意味します。

## NUMERICAL INDEX OF PARTS

| PART NO     | PAGE | REF NO. |
|-------------|------|---------|
| 11929403    | 2    | 14      |
| 12021200    | 2    | 6       |
| 12023305    | 2    | 11      |
| 12024303    | 2    | 12      |
| 12024402    | 2    | 13      |
| 12024501    | 2    | 15      |
| 12111308    | 2    | 5       |
| 12128401    | 2    | 4       |
| 12379111    | 2    | 2       |
| 12383907    | 2    | 3       |
| 12388351    | 2    | 7       |
| 12389300    | 2    | 10      |
| 12389359    | 2    | 8       |
| R4612J0EL02 | 2    | 1       |
| R4612J0FL00 | 2    | 18      |
| SS6090650SP | 2    | 16      |
| SS7080520SP | 2    | 17      |
| WP0371026SD | 2    | 9       |