

MODEL : MD03
List No : 1127-01

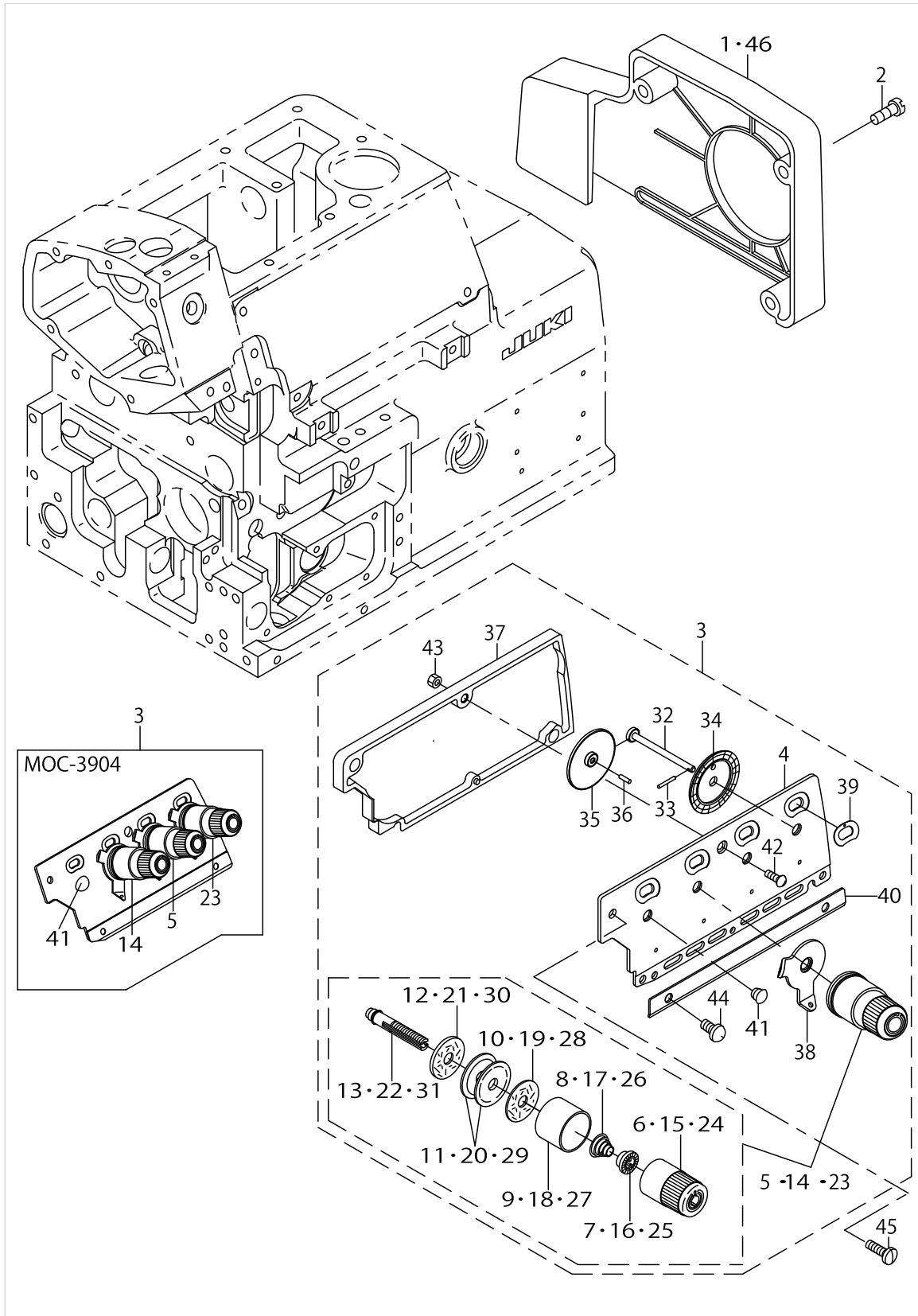
PARTS LIST

Published:09/10/2017

CONTENTS

FRAME COMPONENTS	1
PULSE SENSOR COMPONENTS	3
PNEUMATIC COMPONENTS	5
ELASTIC TAPE FEEDER & T043 COMPONENTS	7
ELASTIC TAPE FEEDER COMPONENTS	9
SAFETY SWITCH & KNEE SWITCH COMPONENTS	13
GAUGE PARTS COMPONENTS	15
TABLE COMPONENTS	17
CONTROL BOX COMPONENTS	19
OPERATION PANEL COMPONENTS	23
HOW TO MAKE USE OF THIS PARTS LIST	25

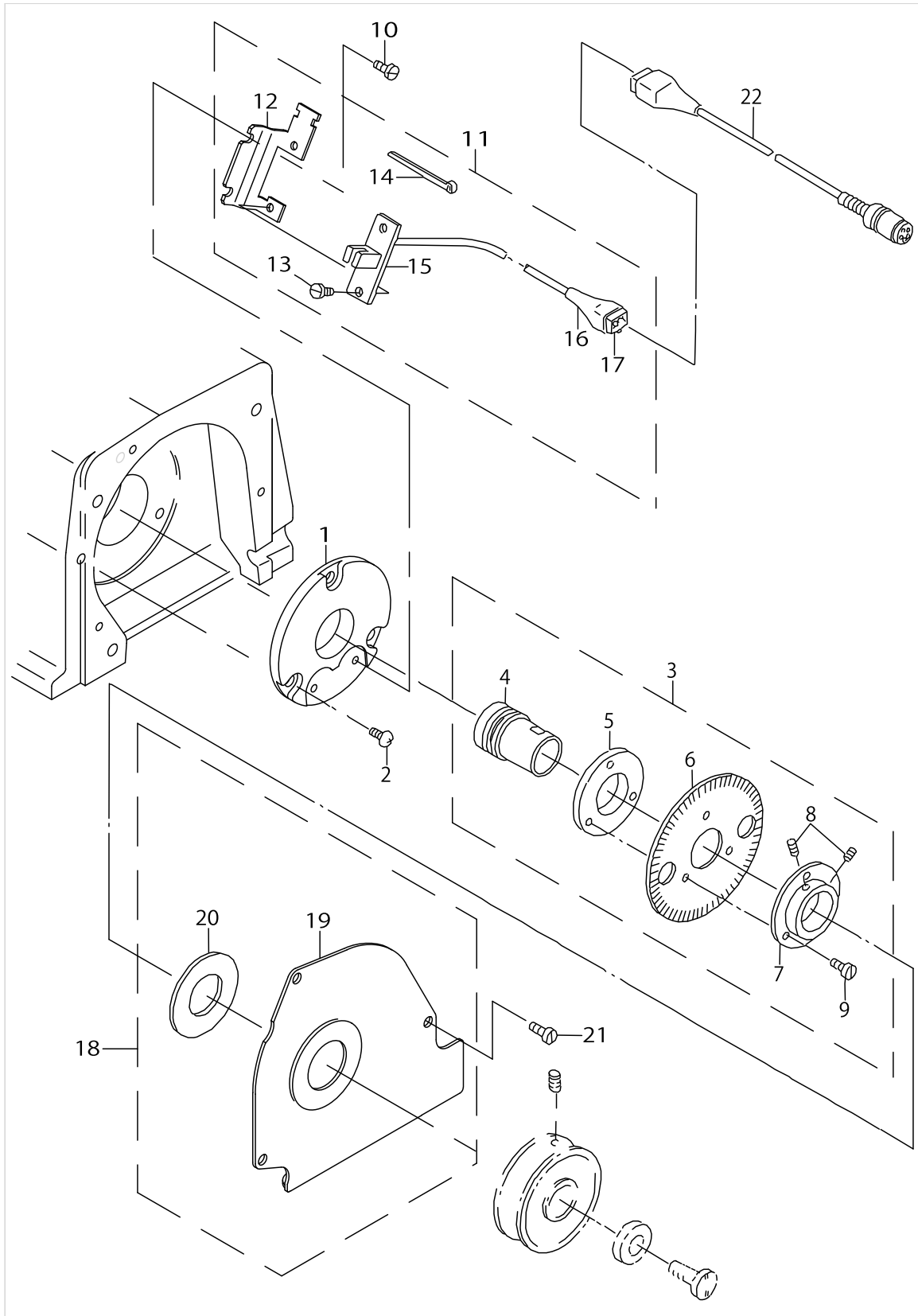
FRAME COMPONENTS



FRAME COMPONENTS

No.	Parts No.	Parts name	Remarks	Level	Cons	Qty
1	12101952	BELT COVER ASM.	FOR DOMESTIC USE			1
2	SS4151215SP	SCREW 15/64-28 L=12				3
3	GMD030030A0	THREAD GUIDE PLATE ASM.				1
4	12126207	THREAD GUIDE PLATE		*		1
5	12126967	KNOB ASM.,YELLOW		*		2
6	12126918	KNOB ,YELLOW		*		1
7	B3112704000	TENSION SPRING BUSHING		*		1
8	B3102804000	TENSION SPRING, YELLOW		*		1
9	12126702	TESION DISK PRESSER		*		1
10	B3120704000	THREAD TENSION SPRING FELT		*		1
11	B3126012000	THREAD TENSION DISK		*		2
12	B3120352000	THREAD TENSION SPRING FELT		*		1
13	12126405	THREAD TENSION BAR		*		1
14	12126967	KNOB ASM.,YELLOW		*		1
15	12126918	KNOB ,YELLOW		*		1
16	B3112704000	TENSION SPRING BUSHING		*		1
17	B3101804000	TENSION SPRING, RED		*		1
18	12126702	TESION DISK PRESSER		*		1
19	B3120704000	THREAD TENSION SPRING FELT		*		1
20	B3126012000	THREAD TENSION DISK		*		2
21	B3120352000	THREAD TENSION SPRING FELT		*		1
22	12126405	THREAD TENSION BAR		*		1
23	12127064	KNOB ASM.,BLUE		*		1
24	12127015	KNOB ,BLUE		*		1
25	B3112704000	TENSION SPRING BUSHING		*		1
26	B3103804000	TENSION SPRING, BLUE		*		1
27	12126702	TESION DISK PRESSER		*		1
28	B3120704000	THREAD TENSION SPRING FELT		*		1
29	B3126012000	THREAD TENSION DISK		*		2
30	B3120352000	THREAD TENSION SPRING FELT		*		1
31	12126405	THREAD TENSION BAR		*		1
32	12127403	SCALE SHAFT		*		1
33	12127502	SCALE SHAFT PIN		*		1
34	12127601	SCALE GEAR		*		1
35	12127700	GEAR		*		1
36	12127809	GEAR SHAFT		*		1
37	12127957	SCALE CASE ASM.		*		1
38	12126504	NEEDLE THREAD GUIDE		*		1
39	12128203	SCALE SIDE PLATE		*		1
40	12128302	THREAD LOOPER GUIDE		*		1
41	TA0620504R0	CAP		*		1
42	SS2090830SL	SCREW		*		1
43	NS6090310SP	NUT 9/64-40		*		1
44	SS7110740TL	SCREW 11/64-40 L= 7.0		*		1
45	SM4041455SN	SCREW M4 L=14				2
46	12101960	BELT COVER ASM.	FOR EXPORT			1

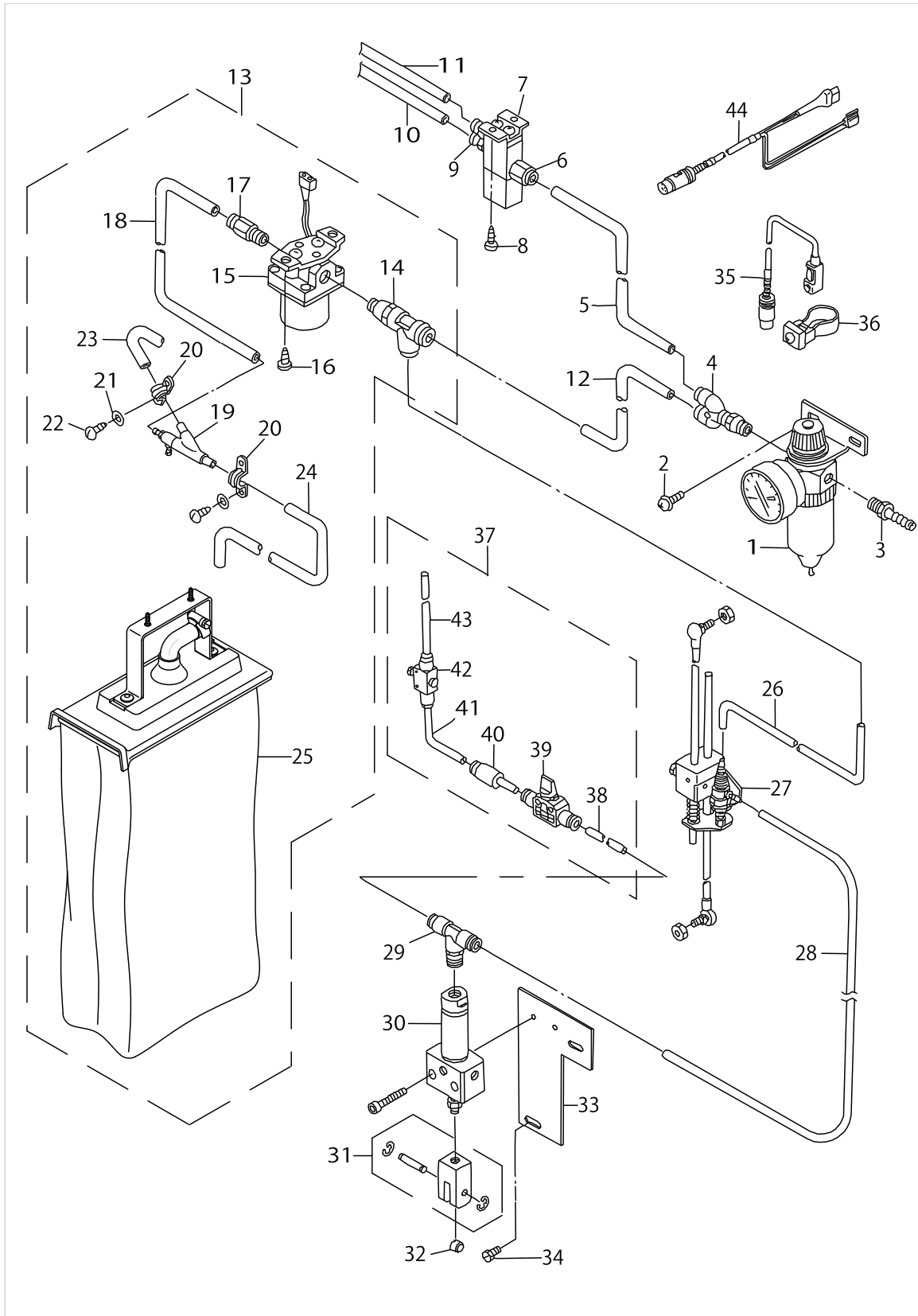
PULSE SENSOR COMPONENTS



PULSE SENSOR COMPONENTS

No.	Parts No.	Parts name	Remarks	Level	Cons	Qty
1	GMD03001000	THRUST HOLDER				1
2	SM4050855SP	SCREW				3
3	GMD010080A0	PULSE PLATE ASM.				1
4	GMD01007000	OIL SHIELD		*		1
5	GMD01009000	PULSE PLATE PRESSER A		*		1
6	GMD01008000	PULSE PLATE		*		1
7	GMD01010000	PULSE PLATE PRESSER B		*		1
8	SS8110422TP	SCREW 11/64-40 L=4		*		2
9	SS6090910SP	SCREW 9/64-40 L=9		*		3
10	SS6090540SP	SCREW 9/64-40 L= 5.0				2
11	GMD030050A0	PULSE SENSOR ASM.				1
12	GMD03005000	SENSOR BOARD PLATE		*		1
13	SS7090520SP	SCREW 9/64-40 L= 4.5		*		2
14	EA9500B0100	CABLE BAND		*		1
15	GMD010110A0	SENSOR BOARD ASM.		*		1
16	MAT01647000	9-POLE PLUG COVER		*		1
17	HK034610060	HOUSING 6P		*		1
18	GMD030040A0	COOLING FAN PLATE ASM.				1
19	GMD03004000	COOLING FAN PLATE		*		1
20	GMD01019000	SENSOR COVER RUBBER		*		1
21	SM4040855SP	SCREW				3
22	GMD010230A0	PULSE SENSOR CORD ASM.				1

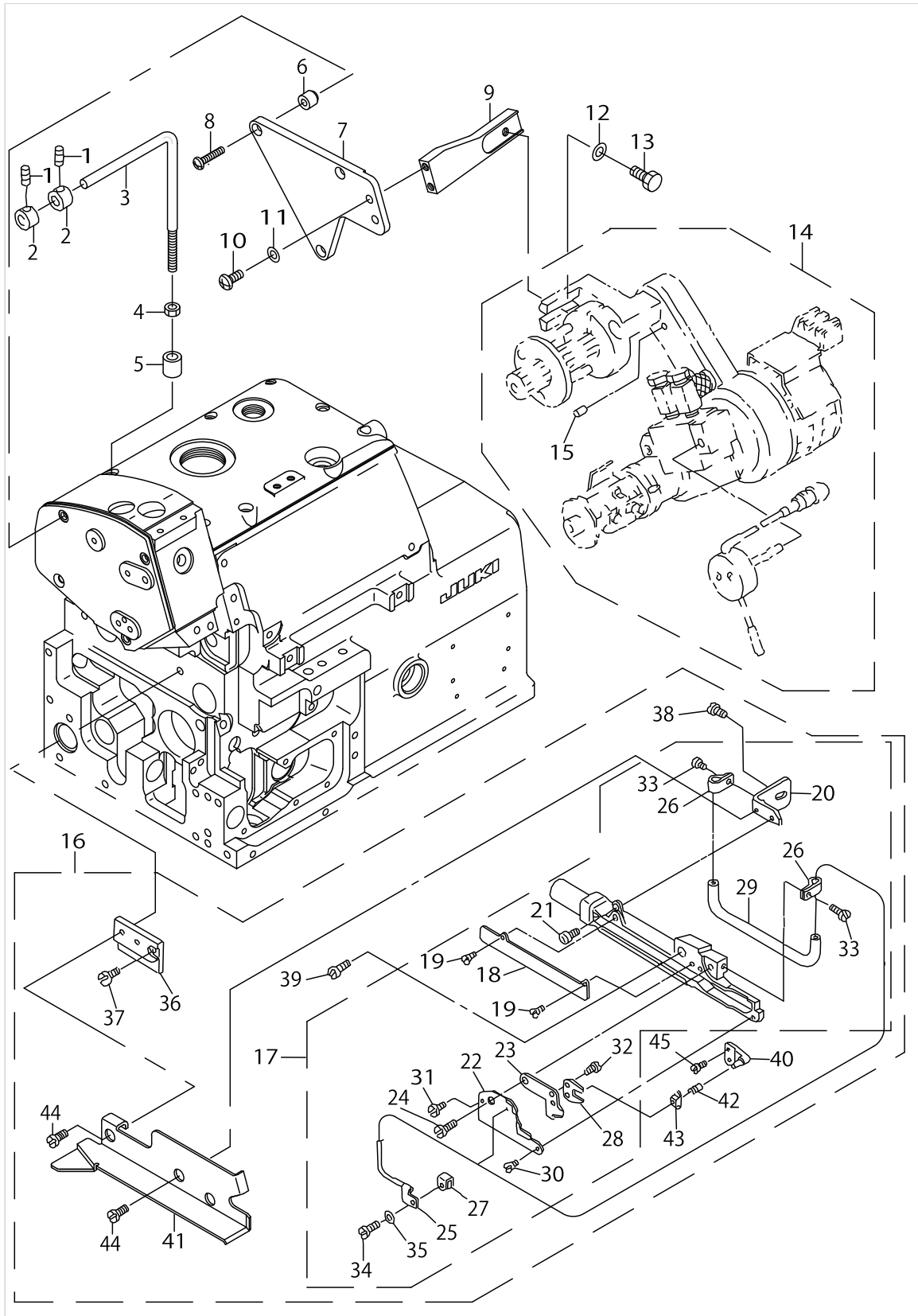
PNEUMATIC COMPONENTS



PNEUMATIC COMPONENTS

No.	Parts No.	Parts name	Remarks	Level	Cons	Qty
1	PF0552010B0	COMBINATION FR UNIT ASM.				1
2	GMD01080000	SCREW M5 L=10				2
3	F1021003000	HOSE JOINT				1
4	PJ308065203	JOINT				1
5	BT0600401EB	TUBE				1
6	PJ301060501	UNION				1
7	PV150518000	SOLENOID VALVE				1
8	SK3412000SC	WOOD SCREW D=4.1 L=20				2
9	PJ301060504	JOINT				2
10	BT0600401EF	TUBE				1.1
11	BT0600401AF	TUBE HOSE, MILKY WHITE				1.1
12	BT0600401EB	TUBE				1
13	GMD010340B0	CHAIN-OFF SUCTION DEVICE				1
14	GAS12304000	TEE, L		*		1
15	GMD010340A0	AIR STOP VALVE ASM.		*		1
16	SK3412000SC	WOOD SCREW D=4.1 L=20		*		2
17	PJ301065201	HALF UNION 6XPT1/4		*		1
18	BT0600401EB	TUBE		*		0.5
19	F10120030A0	NOZZLE ASM.		*		1
20	F1017003000	VINYL HOSE SADDLE		*		2
21	WP0450501SB	WASHER		*		4
22	SK3412000SC	WOOD SCREW D=4.1 L=20		*		4
23	BT1500901Z0	AIR TUBE		*		0.7
24	BT1500901Z0	AIR TUBE		*		0.5
25	F10220030A0	FILTER WHOLE ASM.		*		1
26	BT0600400EC	TUBE HOSE, BLUE				0.9
27	GAK490010A0	AK-49 UNION ROD ASM.				1
28	BT0600400EC	TUBE HOSE, BLUE				0.9
29	PJ305065106	JOINT				1
30	PA2002514A0	AIR CYLINDER				1
31	PX500003000	KNUCKLE				1
32	B1210111000	NEEDLE BAR CRANK COLLAR				1
33	G5930397000	CYLINDER PLATE				1
34	SS9151120CP	SCREW 15/64-28 L=11				2
35	GMD010220A0	CYLINDER SENSOR SWITCH ASM.				1
36	GMD01024000	SENSOR SWITCH BAND				1
37	GMD010600A0	SPEED CONTROLLER ASM.				1
38	BT0600401EB	TUBE		*		0.2
39	PJ303060004	UNION STRAIGHT		*		1
40	PJ301040001	REDUCER		*		1
41	BT0400251EB	URETHANE HOSE, BLACK		*		0.1
42	PC012401000	SPEED CONTROLLER		*		1
43	BT0400251EB	URETHANE HOSE, BLACK		*		0.3
44	GMD010350A0	SOLENOID VALVE CORD ASM.				1

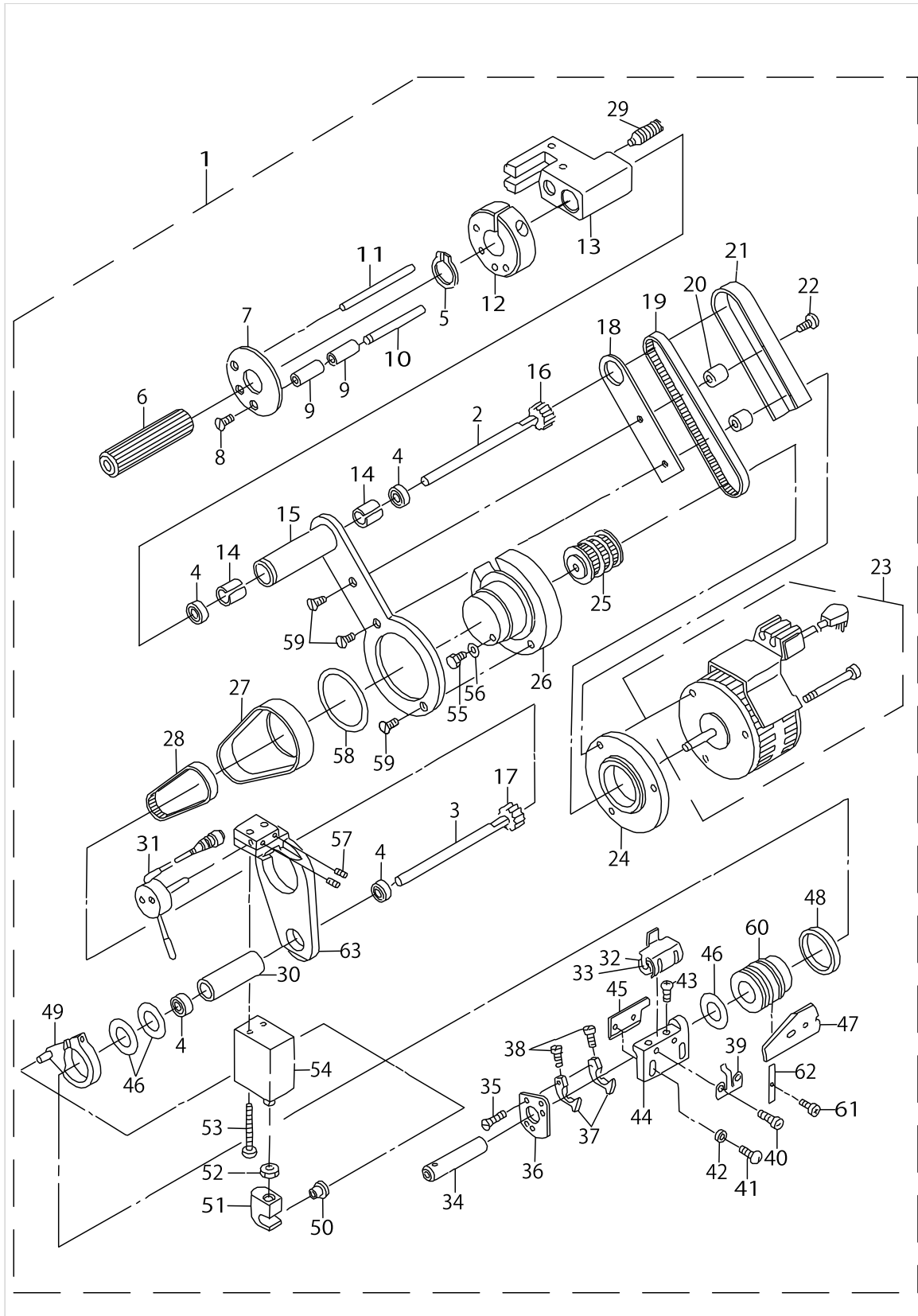
ELASTIC TAPE FEEDER & T043 COMPONENTS



ELASTIC TAPE FEEDER & T043 COMPONENTS

No.	Parts No.	Parts name	Remarks	Level	Cons	Qty
1	SS8090410SP	SCREW 9/64-40 L= 3.5				2
2	CS0640611SP	THRUST HOLDER				2
3	GMD03009000	DEVICE FITTING ROLLER				1
4	NM6050001SC	NUT M5				1
5	11528809	WASHER				1
6	GMD03007000	DEVICE FITTING				3
7	GMD03006000	DEVICE FITTING BASE				1
8	SM4042055SP	SCREW				3
9	GMD03008000	DEVICE FITTING PLATE				1
10	SM4051255SP	SCREW.,M5 L=12.				2
11	WP0531000SD	WASHER M5				2
12	WP0531000SD	WASHER M5				1
13	SM9051203SD	BOLT M5X12				1
14	GMD012010B0	ELASTIC TAPE FEEDER ASM.				1
15	MAL01129A00	MAGNETO		*		1
16	MAT042000A0	PNEUMATIC SIDE CUTTER ASM.				1
17	MAT036010BA	KNIFE REST ASM.		*		1
18	MAT03602000	KNIFE REST LID		*		1
19	SS2060320SP	SCREW 3/32-56 L= 3.2		*		2
20	MAT03604000	KNIFE REST PLATE		*		1
21	SS4110715SP	SCREW 11/64-40 L=7		*		1
22	MAT0360500A	FIXING KNIFE		*		1
23	MAT03606000	WORK KNIFE		*		1
24	MAT03607000	KNIFE SHAFT		*		1
25	MAT036090A0	OIL SUPPLY HOLDER ASM.		*		1
26	MAT03610000	OIL SUPPLY PIPE BRACKET		*		2
27	MAT02111000	SPRING		*		1
28	MAT02502000	DRIVING LEVER		*		1
29	BP400000000	VINYL TUBE, WHITE D=4		*		0.2
30	SS2060510SP	SCREW 3/32-56 L=4.5		*		1
31	SS6090520SP	SCREW 9/64-40 L= 5.0		*		1
32	SS6080410SP	SCREW 1/8-44 L=4		*		2
33	SS6060410TP	SCREW 3/32-56 L= 3.5		*		2
34	SS7060310SP	SCREW 3/32-56 L=3		*		1
35	WP0250516SD	WASHER 2.5X6X0.5		*		1
36	MAT03603000A	KNIFE REST BRACKET		*		1
37	SS4120915SP	SCREW 3/16-28 L=9		*		1
38	SS4150715SP	SCREW 15/64-28 L=7		*		1
39	SS6111210SP	SCREW 11/64-40 L=12		*		1
40	MAT03608000	DRIVE PIN		*		1
41	MAT042010A0	SIDE COVER COMPL.		*		1
42	MAT02106000	SPRING		*		1
43	MAT02503000	SLIDE BLOCK		*		1
44	SS7110840SP	SCREW 11/64-40 L=7.8		*		2
45	SS7080520SP	SCREW 1/8-44 L=4.9		*		2

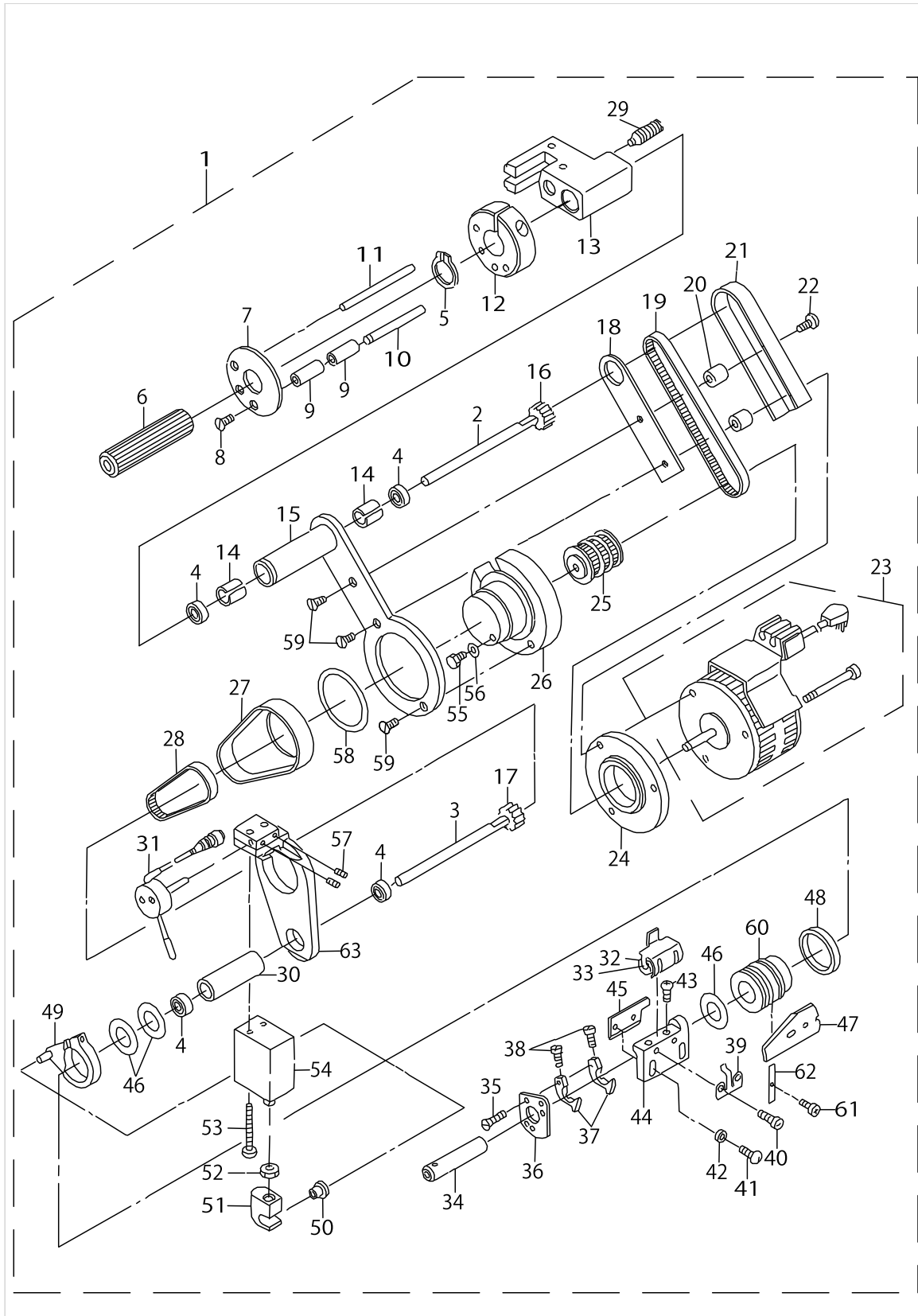
ELASTIC TAPE FEEDER COMPONENTS



ELASTIC TAPE FEEDER COMPONENTS

No.	Parts No.	Parts name	Remarks	Level	Cons	Qty
1	GMD012010A0	ELASTIC TAPE FEEDER ASM.				1
2	GMD01202000	DRIVING SHAFT, UPPER		*		1
3	GMD01203000	DRIVING SHAFT, LOWER		*		1
4	GMD01230000	BEARING		*		4
5	GMD01232000	RETAINER		*		1
6	GMD01204000	ROLLER, UPPER		*		1
7	GMD01208000	RETAINING PLATE		*		1
8	GMD01261000	SCREW		*		3
9	GMD01207000	TAPE ROLLER		*		6
10	GMD01206000	TAPE ROLLER SHAFT		*		2
11	GMD01249000	STOPPER PIN		*		1
12	GMD01250000	STOPPER		*		1
13	GMD01201000	SUPPORT BASE		*		1
14	GMD01233000	BEARING BUSHING		*		2
15	GMD01234000	DRIVING LEVER, UPPER		*		1
16	GMD01222000	SPROCKET, UPPER		*		1
17	GMD01223000	SPROCKET, LOWER		*		1
18	GMD01224000	BELT SPACER		*		1
19	GMD01228000	TIMING BELT, A		*		1
20	GMD01225000	BELT COVER SPACER		*		2
21	GMD01226000	BELT COVER, A		*		1
22	GMD01265000	SCREW		*		1
23	GMD01213000	STEPPING MOTOR		*		1
24	GMD01214000	FLANGE, A		*		1
25	GMD01216000	MOTOR SPROCKET		*		1
26	GMD01215000	FLANGE, B		*		1
27	GMD01227000	BELT COVER, B		*		1
28	GMD01229000	TIMING BELT, B		*		1
29	GMD01267000	SCREW		*		1
30	GMD01237000	BUSHING		*		1
31	GMD01219000	TAPE CUT SWITCH		*		1
32	GMD01242000	TAPE PRESSER ROLLER		*		1
33	GMD01241000	TAPE PRESSER ROLLER SHAFT		*		1
34	GMD01205000	ROLLER, LOWER		*		1
35	GMD01268000	SCREW		*		3
36	GMD01231000	RETAINING PLATE		*		1
37	GMD01248000	TAPE GUIDE		*		2
38	GMD01274000	SCREW		*		2
39	GMD01245000	SPRING		*		1
40	GMD01271000	SCREW		*		2
41	GMD01272000	SCREW		*		2
42	GMD01259000	WASHER		*		2
43	GMD01273000	SCREW		*		2
44	GMD01212000	HOLDER		*		1
45	GMD01211000	FIXING KNIFE		*		1
46	GMD01240000	SPACER		*		3
47	GMD01210000	WORK KNIFE		*		1

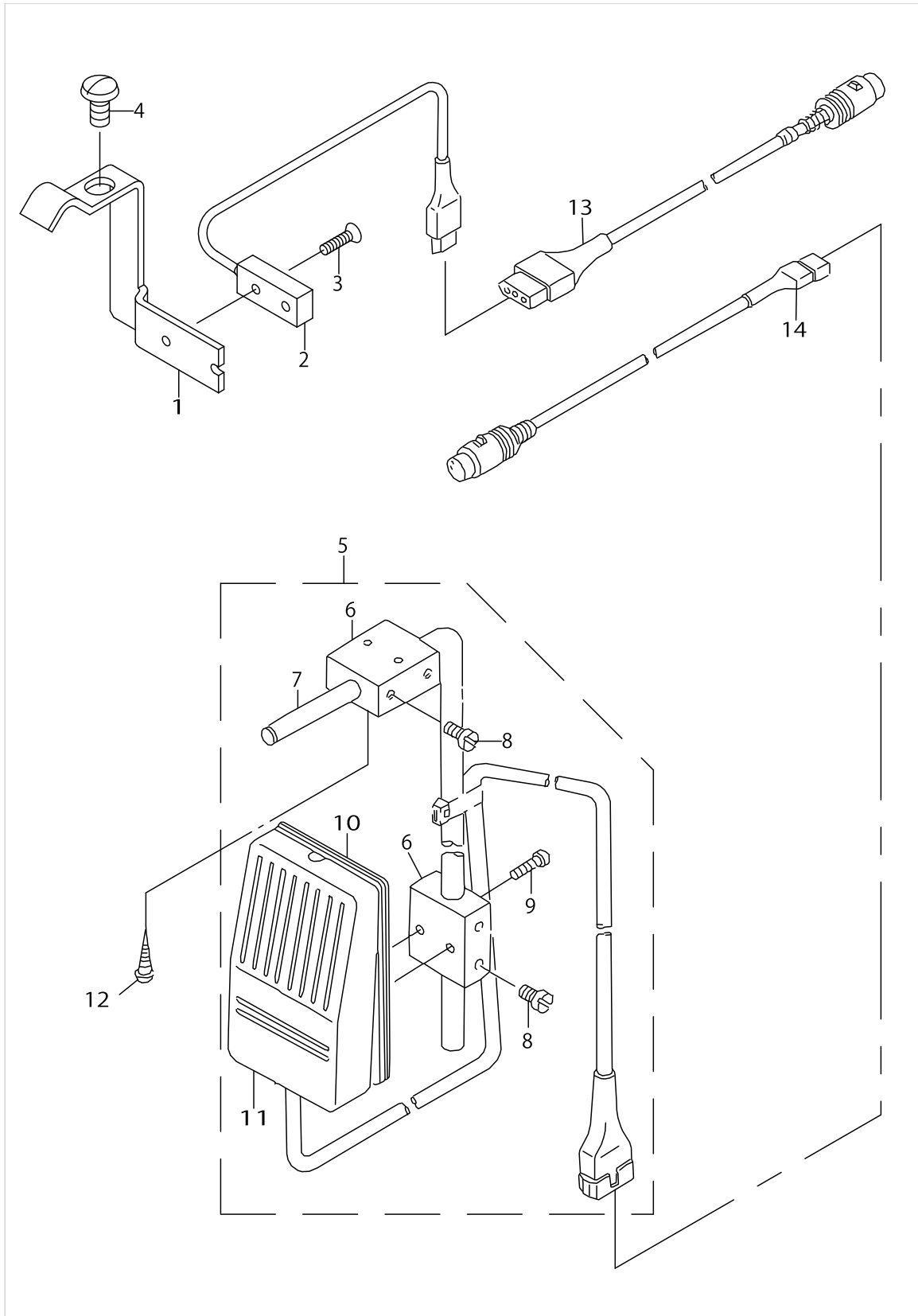
ELASTIC TAPE FEEDER COMPONENTS



ELASTIC TAPE FEEDER COMPONENTS

No.	Parts No.	Parts name	Remarks	Level	Cons	Qty
48	GMD01243000	FIXING RING		*		1
49	GMD01239000	DRIVING LEVER		*		1
50	GMD01238000	ROLLER		*		1
51	GMD01220000	KNUCKLE		*		1
52	GMD01255000	NUT		*		1
53	GMD01260000	SCREW		*		2
54	GMD01217000	CYLINDER		*		1
55	GMD01262000	SCREW		*		1
56	GMD01256000	WASHER		*		1
57	GMD01263000	SCREW		*		2
58	GMD01257000	WAVED WASHER		*		1
59	GMD01266000	SCREW		*		3
60	GMD01209000	WORK KNIFE FIXTURE		*		1
61	GMD01253000	PIN		*		2
62	GMD01244000	SPRING		*		1
63	GMD01235000	DRIVING LEVER, LOWER		*		1

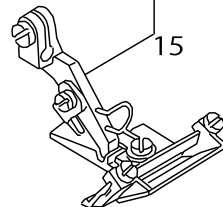
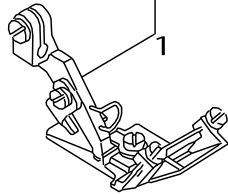
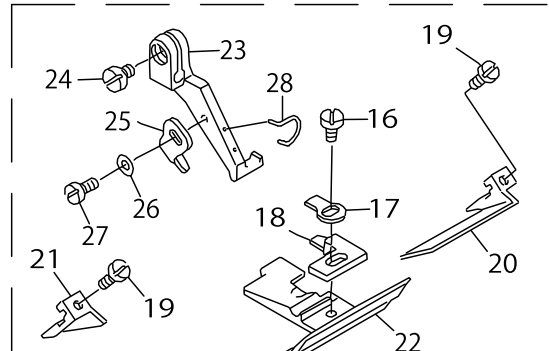
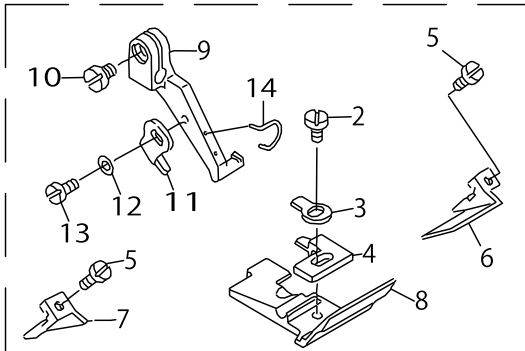
SAFETY SWITCH & KNEE SWITCH COMPONENTS



SAFETY SWITCH & KNEE SWITCH COMPONENTS

No.	Parts No.	Parts name	Remarks	Level	Cons	Qty
1	GMD03010000	SAFETY SWITCH FITTING PLATE				1
2	GMD010310A0	SAFETY SWITCH ASM.				1
3	SM1020801SN	SCREW M2 L=8				1
4	SS5090710SP	SCREW 9/64-40 L= 6.5				1
5	GAK010220B0	LIFTER KNEE SWITCH ASM. B				1
6	MAT80230T00	KNEE SWITCH SUPPORT BASE		*		2
7	MAT80231T00	DRIVING BAR, T002		*		1
8	SS6151220SP	SCREW 15/64-28 L=11.5		*		4
9	SS7111410SP	SCREW 11/64-40 L=14		*		2
10	MAT80232T00	KNEE SWITCH SUPPORT PLATE		*		1
11	GAK010220A0	KNEE SWITCH ASM.		*		1
12	SK3514000SC	WOOD SCREW D=5.1 L=40				2
13	GMD030110A0	SAFETY SWITCH CORD ASM.				1
14	GMD010360A0	KNEE SWITCH CORD ASM.				1

GAUGE PARTS COMPONENTS



GAUGE PARTS COMPONENTS

No.	Parts No.	Parts name	Remarks	Level	Cons	Qty
1	11945664	PRESSER FOOT ASM.	FOR 3904N (TAPE WIDEH:6 TO 14 MM)			1
2	SS7080520SP	SCREW 1/8-44 L=4.9		*		1
3	B150880400B	SPRING		*		1
4	11945904	STITCH TONGUE		*		1
5	SS8080310TP	SCREW 1/8-44 L=2.8		*		2
6	11946100	TAPE GUIDE		*		1
7	11945805	TAPE ADJUSTING GUIDE		*		1
8	11945607	PRESSER FOOT		*		1
9	11872009	PRESSER FOOT HINGE		*		1
10	SS6090650SP	SCREW 9/64-40 L=6		*		1
11	B1530804000	STOPPER		*		1
12	WP0250516SD	WASHER 2.5X6X0.5		*		1
13	SS7060610SP	SCREW 3/32-56 L= 5.5		*		1
14	11820701	FINGER GUARD		*		1
15	11946068	PRESSER FOOT ASM.	FOR 3904N (TAPE WIDEH:14TO26MM)			1
16	SS7080520SP	SCREW 1/8-44 L=4.9		*		1
17	B150880400B	SPRING		*		1
18	11945904	STITCH TONGUE		*		1
19	SS8080310TP	SCREW 1/8-44 L=2.8		*		2
20	11945706	TAPE GUIDE		*		1
21	11945805	TAPE ADJUSTING GUIDE		*		1
22	11946001	PRESSER FOOT		*		1
23	11872009	PRESSER FOOT HINGE		*		1
24	SS6090650SP	SCREW 9/64-40 L=6		*		1
25	B1530804000	STOPPER		*		1
26	WP0250516SD	WASHER 2.5X6X0.5		*		1
27	SS7060610SP	SCREW 3/32-56 L= 5.5		*		1
28	11820701	FINGER GUARD		*		1

TABLE COMPONENTS

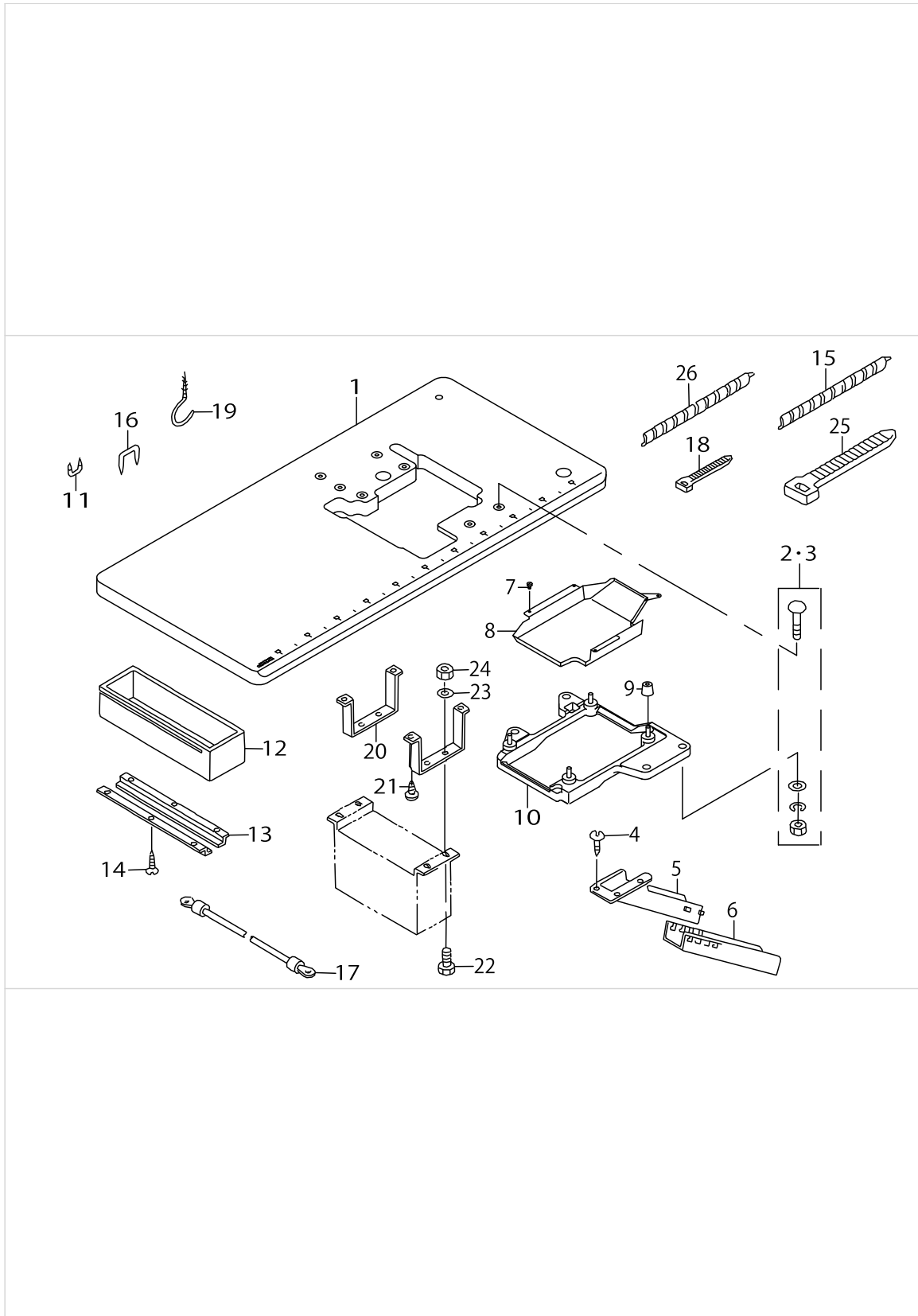
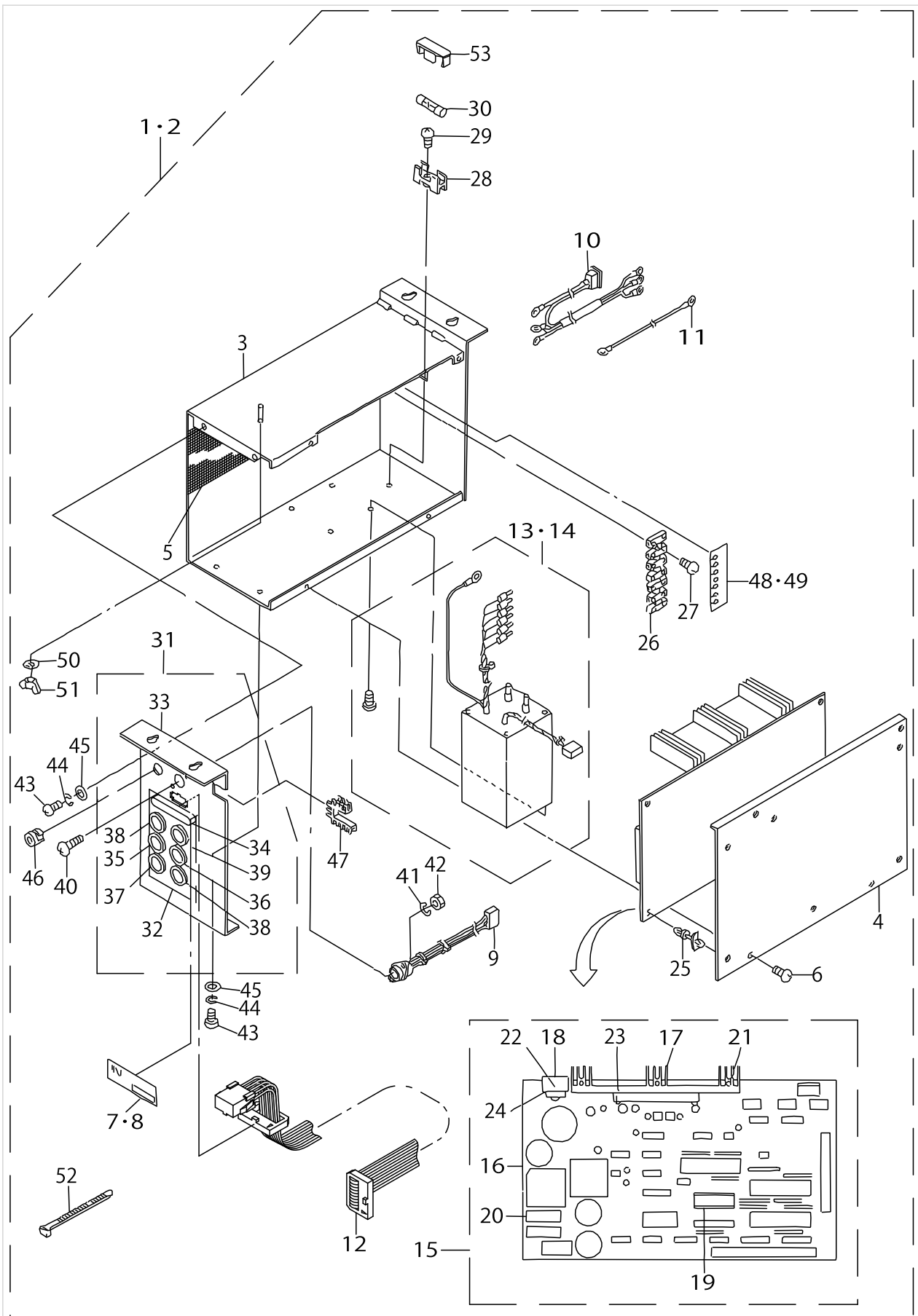


TABLE COMPONENTS

No.	Parts No.	Parts name	Remarks	Level	Cons	Qty
1	GMD03012000	TABLE				1
2	11966751	BOLT A ASM.	FOR DOMESTIC USE			4
3	11571650	BOLT ASM. A	FOR EXPORT			4
4	SK2351600SC	WOOD SCREW D=3.5 L=16				3
5	11960101	CLOTH WASTE CHUTE,UPPER(BENCH)				1
6	11960002	CLOTH WASTE CHUTE,LOWER(BENCH)				1
7	SS6090630SP	SCREW 9/64-40 L=6				4
8	12221800	COOLING FAN CASE				1
9	11571403	RUBBER CUSHION				4
10	12221750	FRAME SUPPORT PLATE ASM.				1
11	D8204555D00	DRAWER STOPPER				1
12	11155108	DRAWER				1
13	11155207	DRAWER SUPPORT				2
14	SK3311500SC	WOOD SCREW D=3.1 L=15				6
15	G5182120000	SPIRAL TUBE				1
16	MAO11532000	CORD STAPLE				5
17	GBT010710A0	GROUND WIRE ASM.				1
18	EA9500B0100	CABLE BAND				3
19	D2113555B00	CORD SET HOOK, B				1
20	GMD01081000	BRACKET				2
21	SK3452500SC	WOOD SCREW D=4.5 L=25				4
22	SM4051201SC	SCREW M5X0.8 L=12				4
23	WS0510002KN	SPRING WASHER				4
24	NM6050001SC	NUT M5				4
25	HX00065000A	CABLE CLIP				2
26	HX003030000	SPIRAL TUBE				1

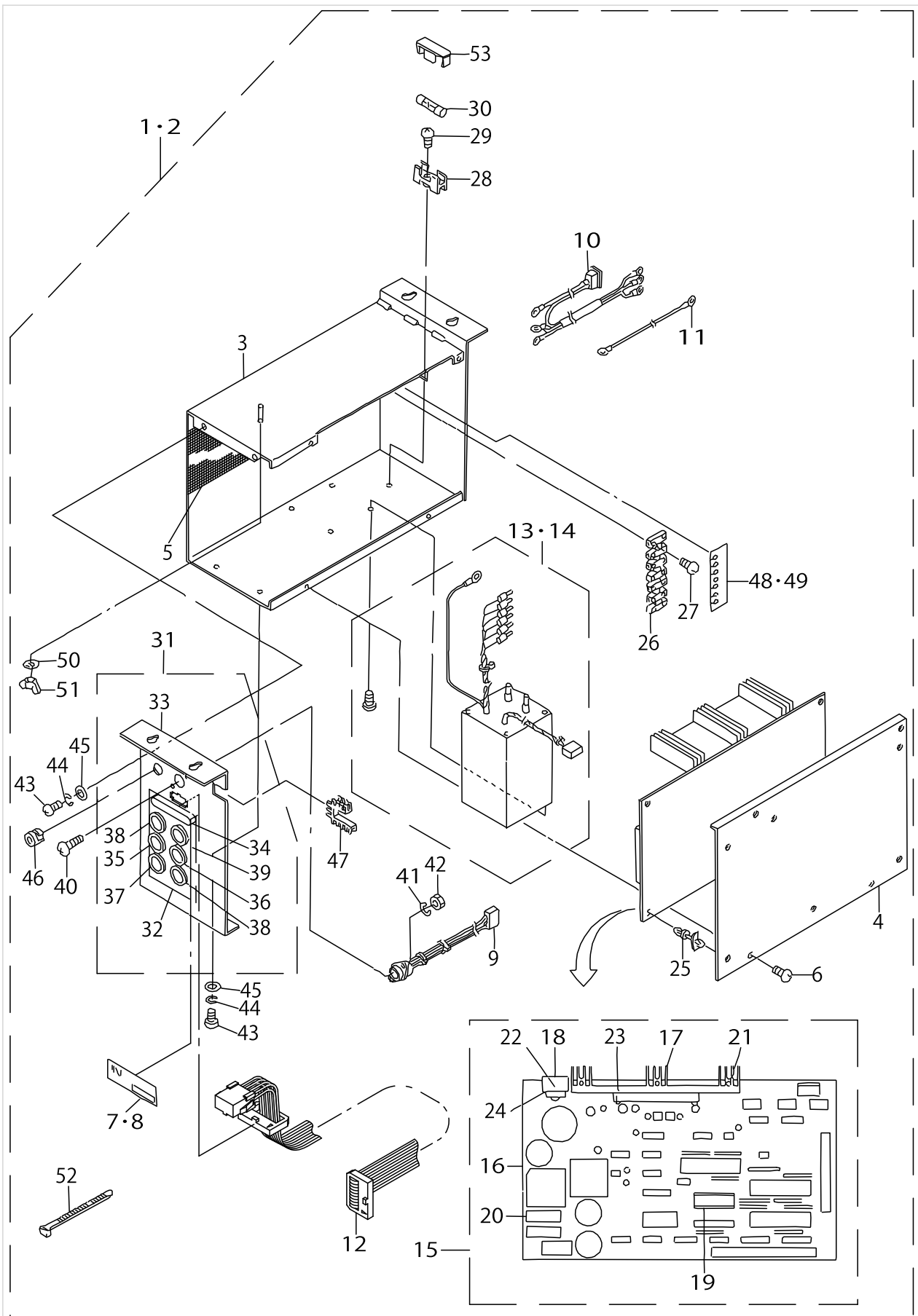
CONTROL BOX COMPONENTS



CONTROL BOX COMPONENTS

No.	Parts No.	Parts name	Remarks	Level	Cons	Qty
1	GMD01501AA0	CONTROL BOX WHOLE ASM.A				1
2	GMD01501BA0	CONTROL BOX WHOLE ASM.B				1
3	GMD01502000	CONTROL BOX BODY		*		1
4	GMD01514000	CONTROL BOX COVER		*		1
5	G6106192000	FILTER, A		*		1
6	SL4030891SC	SCREW M3X8		*		4
7	GMD01503A00	NAME PLATE, A	FOR PRIMARY VOLTAGE 100V TO 240V	*		1
8	GMD01503B00	NAME PLATE, B	FOR PRIMARY VOLTAGE 220V TO 440V	*		1
9	GMD015050A0	MOTOR CORD ASM.		*		1
10	GMD015070A0	MAIN SWITCH ASM.		*		1
11	GMD015080A0	FUSE HOLDER CABLE ASM.		*		1
12	GMD015090A0	CONNECTOR CORD ASM. P4-P5		*		1
13	GMD01510AA0	TRANSFORMER ASM., A	FOR PRIMARY VOLTAGE 100V TO 240V	*		1
14	GMD01510BA0	TRANSFORMER ASM., B	FOR PRIMARY VOLTAGE 220V TO 440V	*		1
15	GMD015110A0	MAIN PC BOARD ASM.		*		1
16	GMD01511000	MAIN PC BOARD		*		1
17	HX00175000A	HEAT SINK		*		1
18	HX002290000	HEAT SINK		*		1
19	HK007170280	IC SOCKET 28P		*		1
20	HK007600050	5-POLE CONNECTOR		*		2
21	SL4041081SF	SCREW M4 L=10		*		3
22	SL4031081SF	SCREW M3 L=10		*		1
23	SL4031081SF	SCREW M3 L=10		*		2
24	HX00202000C	INSULATING PLATE		*		1
25	HX002070000	STUD		*		6
26	HK017150070	TERMINAL BASE 7P		*		1
27	SL4031681SF	SCREW M3 L=16		*		2
28	HF005111000	FUSE HOLDER		*		1
29	SL4041041SC	SCREW M4X10		*		1
30	E9672452000	FUSE 3A		*		1
31	GMD015120A0	I/O PC BOARD ASM.		*		1
32	GMD01512000	I/O PC BOARD		*		1
33	GMD01515000	CONNECTOR PANEL		*		1
34	HK025600340	34-POLE STRAIGHT HEADER		*		1
35	HK006220030	CONNECTOR		*		1
36	HK006220040	CONNECTOR		*		1
37	HK006220050	CONNECTOR		*		1
38	HK006220060	DIN CONNECTOR 6P		*		2
39	HK006220080	CONNECTOR		*		1
40	SM5030801SC	SCREW M3X0.5 L=8		*		2
41	WS0310002KN	SPRING WASHER M3		*		2
42	NM6030001SC	NUT M3		*		2
43	SM4050801SC	SCREW M5X0.8 L=8		*		4
44	WS0510002KN	SPRING WASHER		*		4
45	WP0531000SC	WASHER 5.3X10X1		*		4
46	HX000210000	CORD BUSHING		*		1
47	E5348033100	CABLE PROTECTOR 106MM		*		1

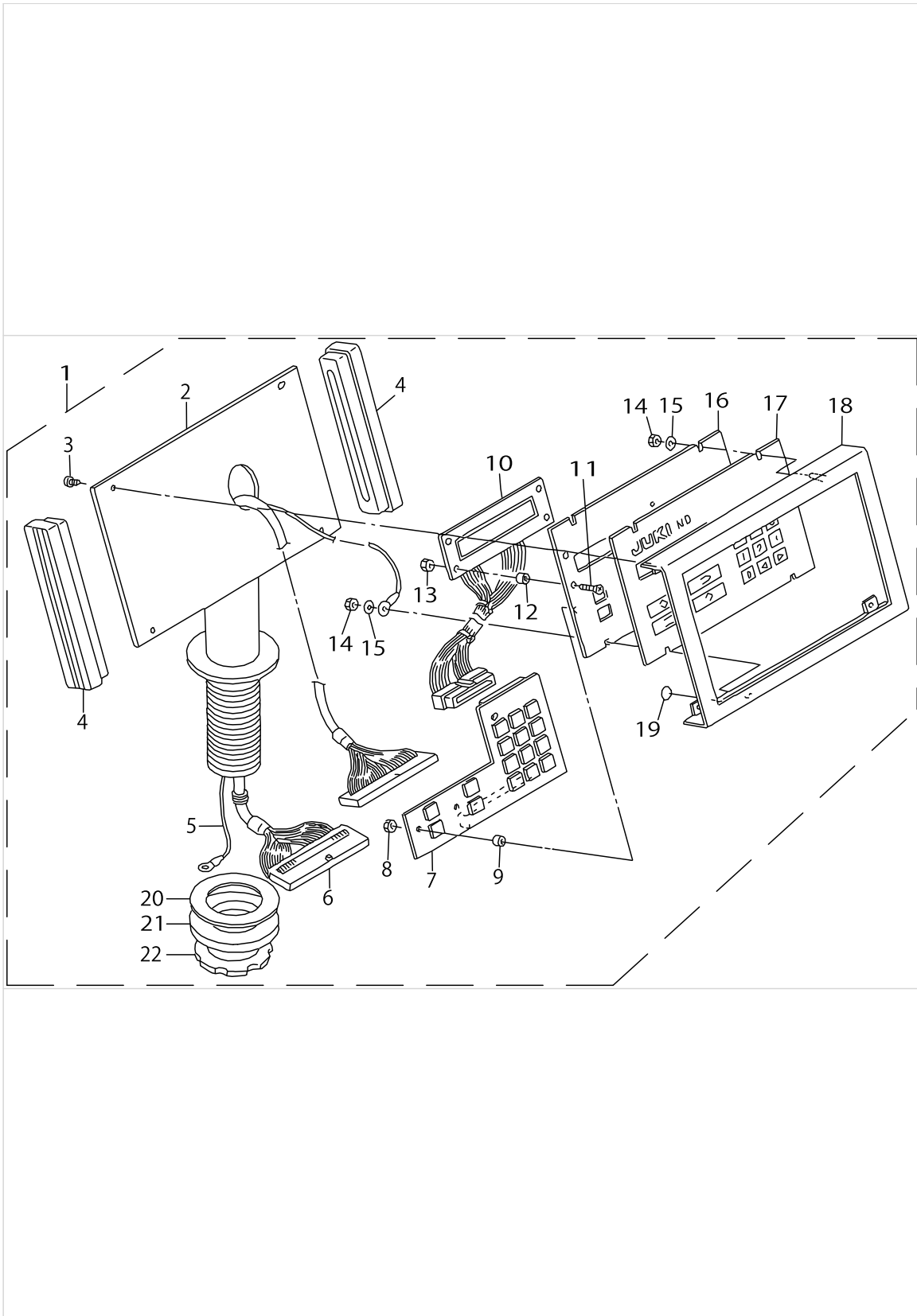
CONTROL BOX COMPONENTS



CONTROL BOX COMPONENTS

No.	Parts No.	Parts name	Remarks	Level	Cons	Qty
48	M1007530A00	SEAL, A	FOR PRIMARY VOLTAGE 100V TO 240V	*		1
49	M1007530B00	SEAL, B	FOR PRIMARY VOLTAGE 220V TO 440V	*		1
50	WT0430001KN	TOOTHED WASHER		*		1
51	NM9040001SC	WING NUT M4		*		1
52	EA9500B0100	CABLE BAND		*		5
53	HF00511000B	FUSE HOLDER COVER		*		1

OPERATION PANEL COMPONENTS



OPERATION PANEL COMPONENTS

No.	Parts No.	Parts name	Remarks	Level	Cons	Qty
1	GMD015200A0	OPERATION PANEL ASM.				1
2	M85725130AA	OPERATION BOX STAND ASM.		*		1
3	SM5030601SE	SCREW		*		4
4	M1080510000	OPERATION BOX SIDE COVER		*		2
5	GMD015260A0	EARTH CORD ASM.		*		1
6	GMD015240A0	FLAT CABLE ASM.		*		1
7	GMD015250A0	OPERATION PANEL BOARD ASM.		*		1
8	NM6030001SC	NUT M3		*		4
9	HX003340000	BOARD SPACER		*		4
10	GMD015230A0	LCD ASM.		*		1
11	SM1021201SC	SCREW M2X0.4 L=12		*		4
12	HX003350000	BOARD SPACER		*		4
13	NM6020001SC	NUT M2		*		4
14	NM6030001SC	NUT M3		*		4
15	WP0320501SC	WASHER M3		*		4
16	GMD01522000	RETAINING PLATE		*		1
17	GMD01521000	OPERATION PANEL SHEET		*		1
18	M108151300A	OPERATION BOX FRONT COVER		*		1
19	E9567319000	EARTH MARK		*		1
20	M1076510000	VIBRATION-PROOF RUBBER PAD		*		1
21	M1077510000	WASHER		*		1
22	M1078510000	NUT		*		1

HOW TO MAKE USE OF THIS PARTS LIST

1.As to "#01" and "#02" refer to the "Note" given at the bottom of the respective pages.

2.Codes on the "Qty" column

- Each numeral indicates the number of parts required.
- "0.1" and "2.5" indicate the length (in meters) of the respective parts.

3.Parentheses mean that the corresponding part is a subpart that constructs an assembly part.

4.Dotted lines on the Figures indicate assembly parts.

1. リストページの# 0 1、# 0 2の印は、ページ下の"注記"の説明を参照下さい。
2. 数量欄の数字は、個数を表し、0. 1、2. 5等の数値は、長さ（単位メートル）を表します。
3. 数量欄の（ ）は、組部品を構成している子部品であることを意味します。
4. イラストページの-----枠は、組構成であることを意味します。

NUMERICAL INDEX OF PARTS

PART NO	PAGE	REF NO.	PART NO	PAGE	REF NO.	PART NO	PAGE	REF NO.
11155108	18	12	B3120352000	2	12·21·30	GMD010360A0	14	14
11155207	18	13	B3120704000	2	10·19·28	GMD010600A0	6	37
11528809	8	5	B3126012000	2	11·20·29	GMD01080000	6	2
11571403	18	9	BP400000000	8	29	GMD01081000	18	20
11571650	18	3	BT0400251EB	6	43	GMD01201000	10	13
11820701	16	28	BT0600400EC	6	28	GMD012010A0	10	1
11872009	16	23	BT0600401AF	6	11	GMD012010B0	8	14
11945607	16	8	BT0600401EB	6	38	GMD01202000	10	2
11945664	16	1	BT0600401EF	6	10	GMD01203000	10	3
11945706	16	20	BT1500901Z0	6	24	GMD01204000	10	6
11945805	16	21	CS0640611SP	8	2	GMD01205000	10	34
11945904	16	18	D2113555B00	18	19	GMD01206000	10	10
11946001	16	22	D8204555D00	18	11	GMD01207000	10	9
11946068	16	15	E5348033100	20	47	GMD01208000	10	7
11946100	16	6	E9567319000	24	19	GMD01209000	12	60
11960002	18	6	E9672452000	20	30	GMD01210000	10	47
11960101	18	5	EA9500B0100	4	14	GMD01211000	10	45
11966751	18	2	EA9500B0100	18	18	GMD01212000	10	44
12101952	2	1·46	EA9500B0100	22	52	GMD01213000	10	23
12101960	2	1·46	F10120030A0	6	19	GMD01214000	10	24
12126207	2	4	F1017003000	6	20	GMD01215000	10	26
12126405	2	13·22·31	F1021003000	6	3	GMD01216000	10	25
12126504	2	38	F10220030A0	6	25	GMD01217000	12	54
12126702	2	9·18·27	G5182120000	18	15	GMD01219000	10	31
12126918	2	6·15·24	G5930397000	6	33	GMD01220000	12	51
12126967	2	14	G6106192000	20	5	GMD01222000	10	16
12127015	2	6·15·24	GAK010220A0	14	11	GMD01223000	10	17
12127064	2	23	GAK010220B0	14	5	GMD01224000	10	18
12127403	2	32	GAK490010A0	6	27	GMD01225000	10	20
12127502	2	33	GAS12304000	6	14	GMD01226000	10	21
12127601	2	34	GBT010710A0	18	17	GMD01227000	10	27
12127700	2	35	GMD01007000	4	4	GMD01228000	10	19
12127809	2	36	GMD01008000	4	6	GMD01229000	10	28
12127957	2	37	GMD010080A0	4	3	GMD01230000	10	4
12128203	2	39	GMD01009000	4	5	GMD01231000	10	36
12128302	2	40	GMD01010000	4	7	GMD01232000	10	5
12221750	18	10	GMD010110A0	4	15	GMD01233000	10	14
12221800	18	8	GMD01019000	4	20	GMD01234000	10	15
B1210111000	6	32	GMD010220A0	6	35	GMD01235000	12	63
B150880400B	16	17	GMD010230A0	4	22	GMD01237000	10	30
B1530804000	16	25	GMD01024000	6	36	GMD01238000	12	50
B3101804000	2	8·17·26	GMD010310A0	14	2	GMD01239000	12	49
B3102804000	2	8·17·26	GMD010340A0	6	15	GMD01240000	10	46
B3103804000	2	8·17·26	GMD010340B0	6	13	GMD01241000	10	33
B3112704000	2	7·16·25	GMD010350A0	6	44	GMD01242000	10	32

NUMERICAL INDEX OF PARTS

PART NO	PAGE	REF NO.	PART NO	PAGE	REF NO.	PART NO	PAGE	REF NO.
GMD01243000	12	48	GMD015250A0	24	7	MAO11532000	18	16
GMD01244000	12	62	GMD015260A0	24	5	MAT01647000	4	16
GMD01245000	10	39	GMD03001000	4	1	MAT02106000	8	42
GMD01248000	10	37	GMD030030A0	2	3	MAT02111000	8	27
GMD01249000	10	11	GMD03004000	4	19	MAT02502000	8	28
GMD01250000	10	12	GMD030040A0	4	18	MAT02503000	8	43
GMD01253000	12	61	GMD03005000	4	12	MAT036010BA	8	17
GMD01255000	12	52	GMD030050A0	4	11	MAT03602000	8	18
GMD01256000	12	56	GMD03006000	8	7	MAT03603000A	8	36
GMD01257000	12	58	GMD03007000	8	6	MAT03604000	8	20
GMD01259000	10	42	GMD03008000	8	9	MAT0360500A	8	22
GMD01260000	12	53	GMD03009000	8	3	MAT03606000	8	23
GMD01261000	10	8	GMD03010000	14	1	MAT03607000	8	24
GMD01262000	12	55	GMD030110A0	14	13	MAT03608000	8	40
GMD01263000	12	57	GMD03012000	18	1	MAT036090A0	8	25
GMD01265000	10	22	HF00511000B	22	53	MAT03610000	8	26
GMD01266000	12	59	HF005111000	20	28	MAT042000A0	8	16
GMD01267000	10	29	HK006220030	20	35	MAT042010A0	8	41
GMD01268000	10	35	HK006220040	20	36	MAT80230T00	14	6
GMD01271000	10	40	HK006220050	20	37	MAT80231T00	14	7
GMD01272000	10	41	HK006220060	20	38	MAT80232T00	14	10
GMD01273000	10	43	HK006220080	20	39	NM6020001SC	24	13
GMD01274000	10	38	HK007170280	20	19	NM6030001SC	20	42
GMD01501AA0	20	1·2	HK007600050	20	20	NM6030001SC	24	14
GMD01501BA0	20	1·2	HK017150070	20	26	NM6050001SC	8	4
GMD01502000	20	3	HK025600340	20	34	NM6050001SC	18	24
GMD01503A00	20	7·8	HK034610060	4	17	NM9040001SC	22	51
GMD01503B00	20	7·8	HX000210000	20	46	NS6090310SP	2	43
GMD015050A0	20	9	HX00065000A	18	25	PA2002514A0	6	30
GMD015070A0	20	10	HX00175000A	20	17	PC012401000	6	42
GMD015080A0	20	11	HX00202000C	20	24	PF0552010B0	6	1
GMD015090A0	20	12	HX002070000	20	25	PJ301040001	6	40
GMD01510AA0	20	13·14	HX002290000	20	18	PJ301060501	6	6
GMD01510BA0	20	13·14	HX003030000	18	26	PJ301060504	6	9
GMD01511000	20	16	HX003340000	24	9	PJ301065201	6	17
GMD015110A0	20	15	HX003350000	24	12	PJ303060004	6	39
GMD01512000	20	32	M1007530A00	22	48·49	PJ305065106	6	29
GMD015120A0	20	31	M1007530B00	22	48·49	PJ308065203	6	4
GMD01514000	20	4	M1076510000	24	20	PV150518000	6	7
GMD01515000	20	33	M1077510000	24	21	PX500003000	6	31
GMD015200A0	24	1	M1078510000	24	22	SK2351600SC	18	4
GMD01521000	24	17	M1080510000	24	4	SK3311500SC	18	14
GMD01522000	24	16	M108151300A	24	18	SK3412000SC	6	22
GMD015230A0	24	10	M85725130AA	24	2	SK3452500SC	18	21
GMD015240A0	24	6	MAL01129A00	8	15	SK3514000SC	14	12

NUMERICAL INDEX OF PARTS

PART NO	PAGE	REF NO.	PART NO	PAGE	REF NO.
SL4030891SC	20	6	SS9151120CP	6	34
SL4031081SF	20	23	TA0620504R0	2	41
SL4031681SF	20	27	WP0250516SD	8	35
SL4041041SC	20	29	WP0250516SD	16	26
SL4041081SF	20	21	WP0320501SC	24	15
SM1020801SN	14	3	WP0450501SB	6	21
SM1021201SC	24	11	WP0531000SC	20	45
SM4040855SP	4	21	WP0531000SD	8	12
SM4041455SN	2	45	WS0310002KN	20	41
SM4042055SP	8	8	WS0510002KN	18	23
SM4050801SC	20	43	WS0510002KN	20	44
SM4050855SP	4	2	WT0430001KN	22	50
SM4051201SC	18	22			
SM4051255SP	8	10			
SM5030601SE	24	3			
SM5030801SC	20	40			
SM9051203SD	8	13			
SS2060320SP	8	19			
SS2060510SP	8	30			
SS2090830SL	2	42			
SS4110715SP	8	21			
SS4120915SP	8	37			
SS4150715SP	8	38			
SS4151215SP	2	2			
SS5090710SP	14	4			
SS6060410TP	8	33			
SS6080410SP	8	32			
SS6090520SP	8	31			
SS6090540SP	4	10			
SS6090630SP	18	7			
SS6090650SP	16	24			
SS6090910SP	4	9			
SS6111210SP	8	39			
SS6151220SP	14	8			
SS7060310SP	8	34			
SS7060610SP	16	27			
SS7080520SP	8	45			
SS7080520SP	16	16			
SS7090520SP	4	13			
SS7110740TL	2	44			
SS7110840SP	8	44			
SS7111410SP	14	9			
SS8080310TP	16	19			
SS8090410SP	8	1			
SS8110422TP	4	8			