

MODEL : MOR-3900 SUBCLASSES/MOR-3904/MOR-3905

List No : 1111-01

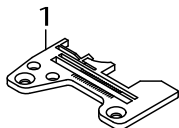
PARTS LIST

Published:09/10/2017

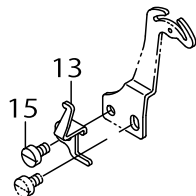
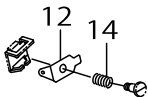
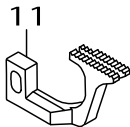
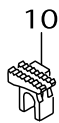
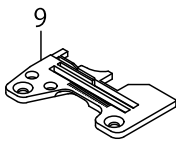
CONTENTS

MOR-3900 SUBCLASSES (1)	1
MOR-3900 SUBCLASSES (2)	3
MOR-3900 SUBCLASSES (3)	5
MOR-3900 SUBCLASSES (4)	7
MOR-3900 SUBCLASSES (5)	9
MOR-3900 SUBCLASSES (6)	11
LIST FOR INFORMATION OF CHANGE	13
HOW TO MAKE USE OF THIS PARTS LIST	14

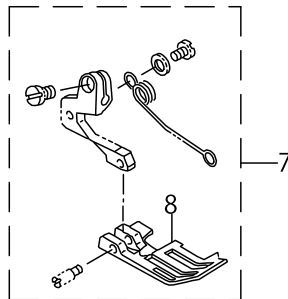
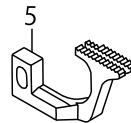
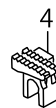
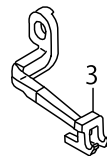
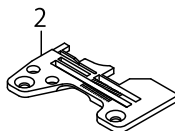
MOR-3904-0D4-300
MOR-3904E-0D4-300



MOR-3904B-0D4-306

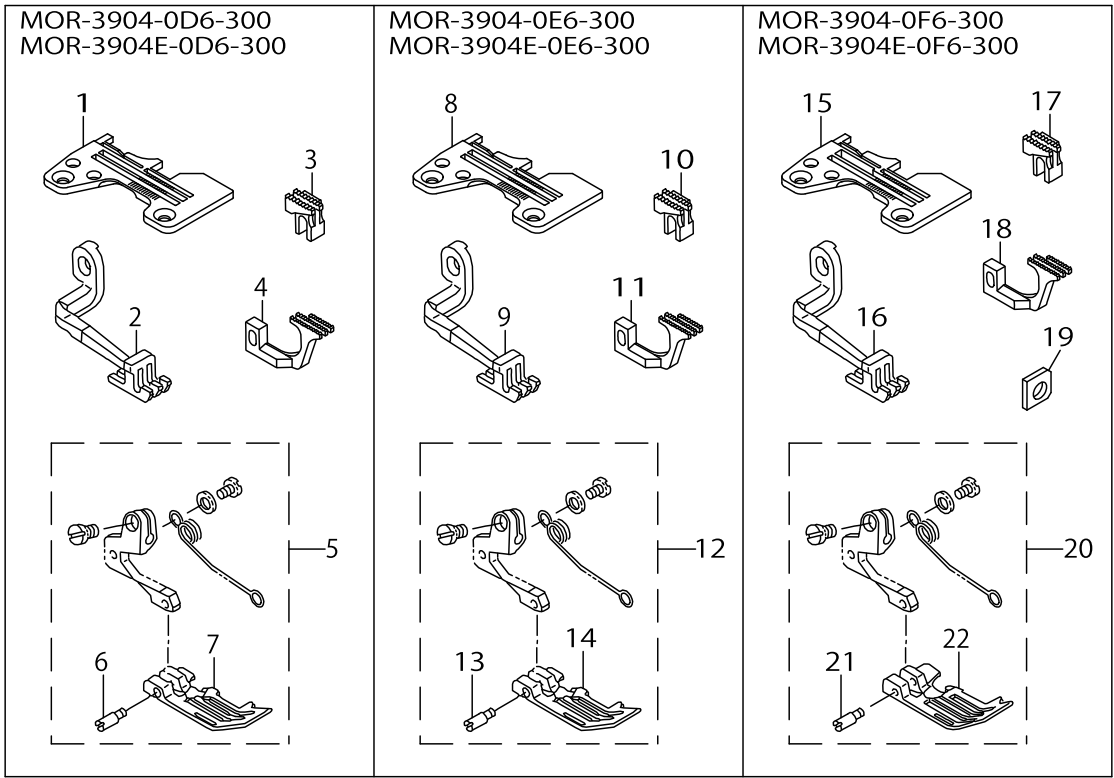


MOR-3904-0F4-300
MOR-3904E-0F4-300



MOR-3900 SUBCLASSES (1)

No.	Parts No.	Parts name	Remarks	Level	Cons	Qty
1	R4200J0DD00	HROAT PLATE				1
2	R4200J0FD0B	THROAT PLATE				1
3	11936705	TOP FEED DOG				1
4	11597101	MAIN FEED DOG				1
5	B1657814B0E	DIFFERENTIAL FEED DOG				1
6	11991809	GAUGE				1
7	11932159	PRESSER FOOT ASM.				1
8	11926003	PRESSER FOOT		*		1
9	R4200J0DD0C	THROAT PLATE				1
10	11597101	MAIN FEED DOG				1
11	11886207	DIFFERENTIAL FEED DOG				1
12	12112504	NEEDLE THREAD PRESSER PLATE C				1
13	12304705	DIFFERENTIAL FEED CAM				1
14	12112702	NEEDLE THREAD PRESSER SPRING B				1
15	SS6090620TP	SCREW				1

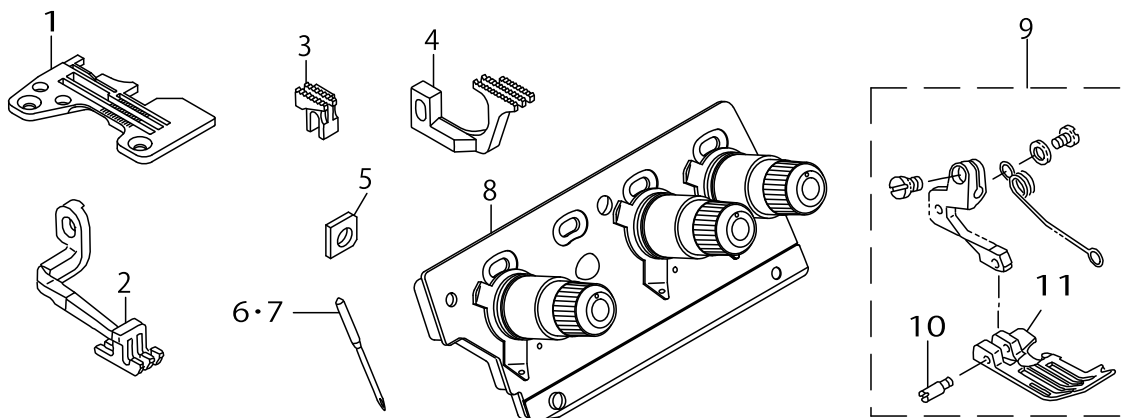


MOR-3900 SUBCLASSES (2)

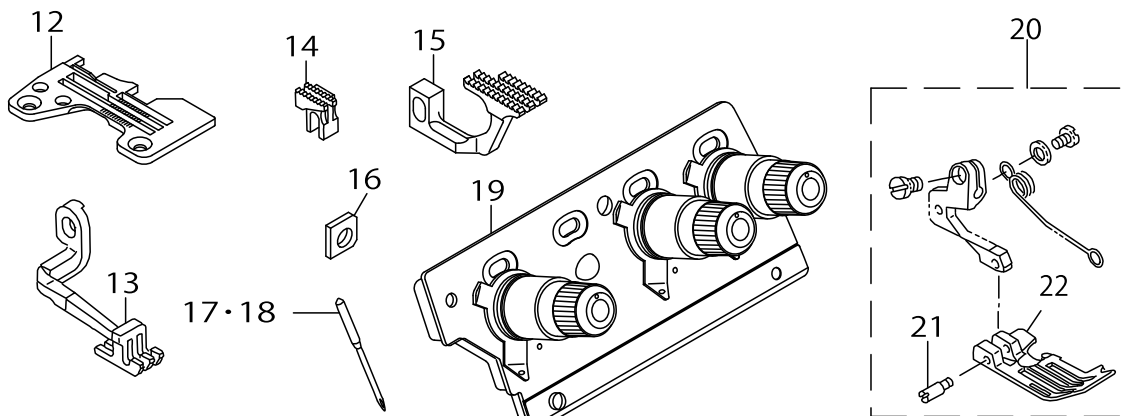
No.	Parts No.	Parts name	Remarks	Level	Cons	Qty
1	R4300J0DE00	THROAT PLATE				1
2	11936804	TOP FEED DOG				1
3	11882206	MAIN FEED DOG				1
4	11885100	DIFFERENTIAL FEED DOG				1
5	12320453	PRESSER FOOT ASM.				1
6	11930609	HINGE PIN		*		1
7	12320404	PRESSER FOOT		*		1
8	R4300J0EE00	THROAT PLATE				1
9	11936804	TOP FEED DOG				1
10	11882206	MAIN FEED DOG				1
11	11885100	DIFFERENTIAL FEED DOG				1
12	12320453	PRESSER FOOT ASM.				1
13	11930609	HINGE PIN		*		1
14	12320404	PRESSER FOOT		*		1
15	R4300J0FE0B	THROAT PLATE				1
16	11936804	TOP FEED DOG				1
17	11882206	MAIN FEED DOG				1
18	11885100	DIFFERENTIAL FEED DOG				1
19	11991809	GAUGE				1
20	11932258	PRESSER FOOT ASM.				1
21	11930609	HINGE PIN		*		1
22	11926102	PRESSER FOOT		*		1

MOR-3900 SUBCLASSES (3)

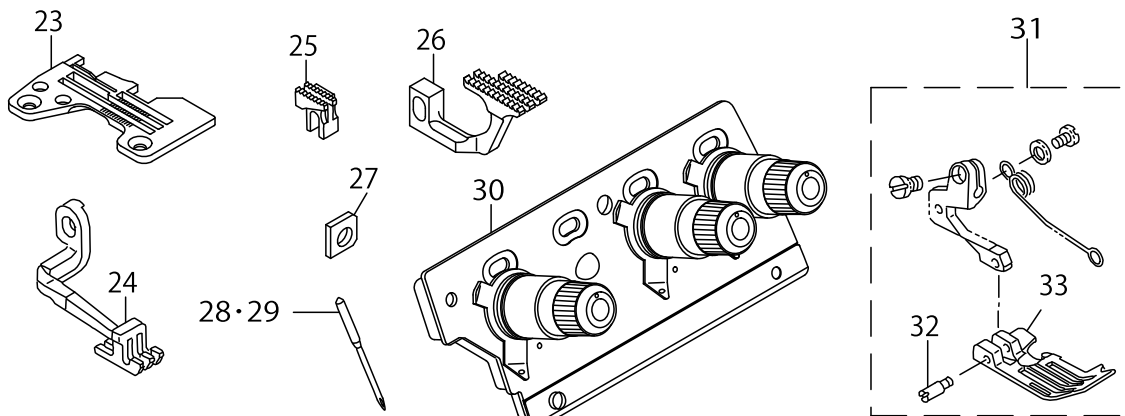
MOR-3904-0F6-500
MOR-3904E-0F6-500



MOR-3904-0G6-500
MOR-3904E-0G6-500



MOR-3904-0H6-500
MOR-3904E-0H6-500

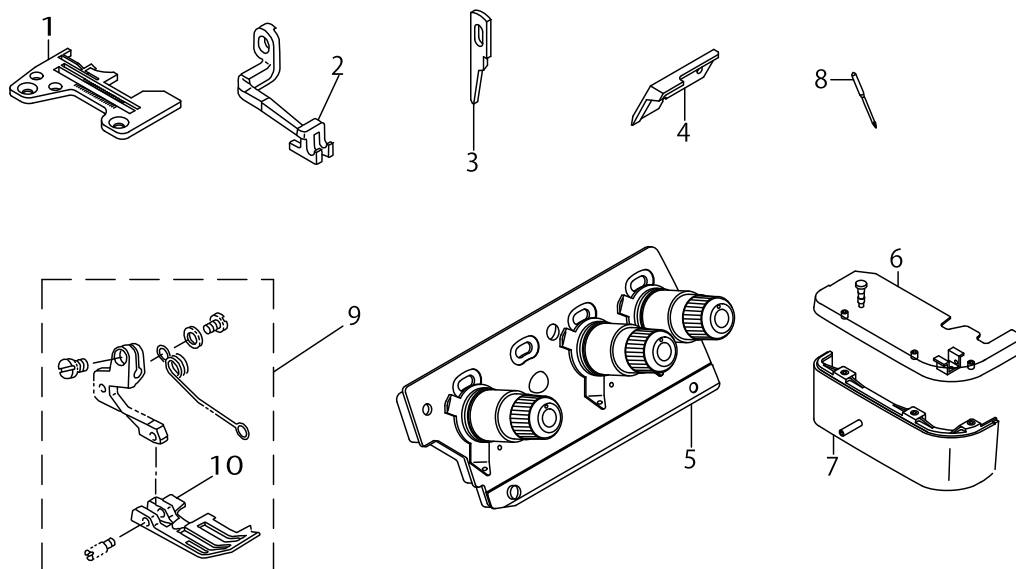


MOR-3900 SUBCLASSES (3)

No.	Parts No.	Parts name	Remarks	Level	Cons	Qty
1	R4300J0FE0B	THROAT PLATE	FOR JE			1
2	11936804	TOP FEED DOG				1
3	11883303	MAIN FEED DOG				1
4	11885605	DIFFERENTIAL FEED DOG				1
5	11991809	GAUGE				1
6	MDC270B1400	NEEDLE DCX27 #14				1
7	MC033600900	NEEDLE B-27 NM90				1
8	12180469	THREAD GUIDE PLATE ASM.				1
9	11932258	PRESSER FOOT ASM.				1
10	11930609	HINGE PIN		*		1
11	11926102	PRESSER FOOT		*		1
12	R4300J0GE00	THROAT PLATE	FOR JE			1
13	11936804	TOP FEED DOG				1
14	11883303	MAIN FEED DOG				1
15	12171708	DIFFERENTIAL FEED DOG				1
16	11991809	GAUGE				1
17	MDC270B1400	NEEDLE DCX27 #14				1
18	MC033600900	NEEDLE B-27 NM90				1
19	12180469	THREAD GUIDE PLATE ASM.				1
20	11932258	PRESSER FOOT ASM.				1
21	11930609	HINGE PIN		*		1
22	11926102	PRESSER FOOT		*		1
23	R4300J0HE00	THROAT PLATE	FOR JE			1
24	11936804	TOP FEED DOG				1
25	11883303	MAIN FEED DOG				1
26	12171708	DIFFERENTIAL FEED DOG				1
27	11991809	GAUGE				1
28	MDC270B1400	NEEDLE DCX27 #14				1
29	MC033600900	NEEDLE B-27 NM90				1
30	12180469	THREAD GUIDE PLATE ASM.				1
31	11932258	PRESSER FOOT ASM.				1
32	11930609	HINGE PIN		*		1
33	11926102	PRESSER FOOT		*		1

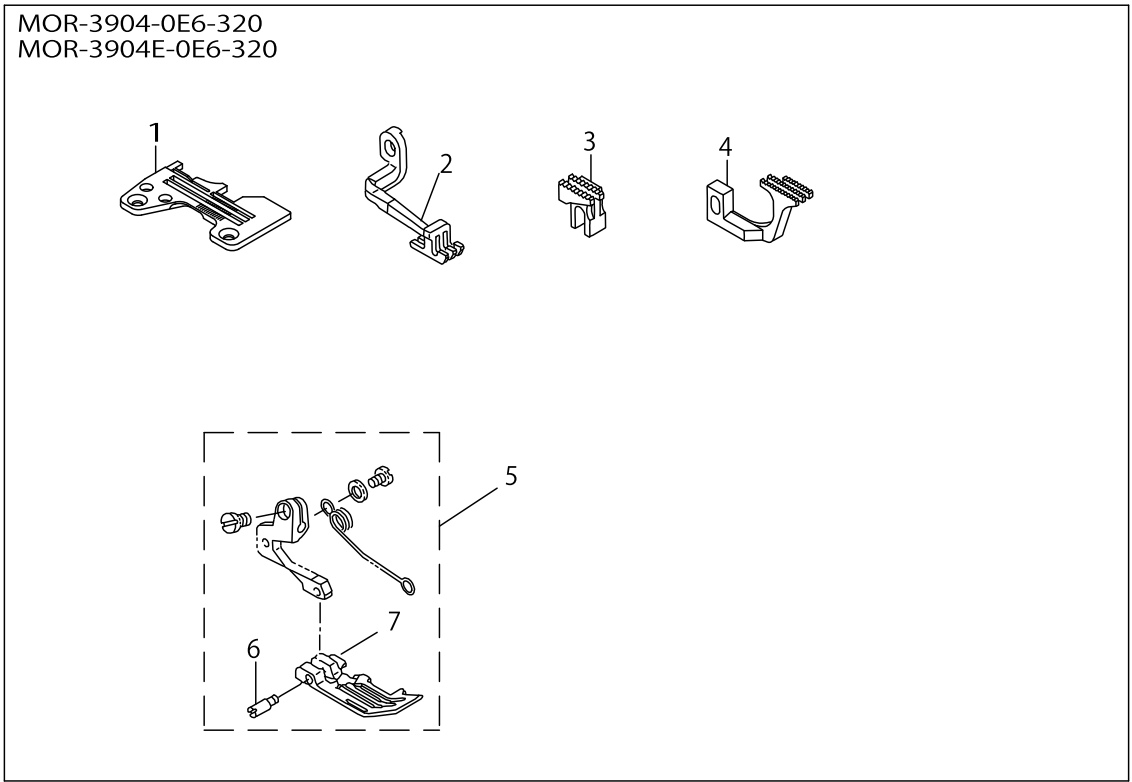
MOR-3900 SUBCLASSES (4)

MOR-3905-0D4-210
MOR-3905E-0D4-210
MOR-3905-0E4-210
MOR-3905E-0E4-210



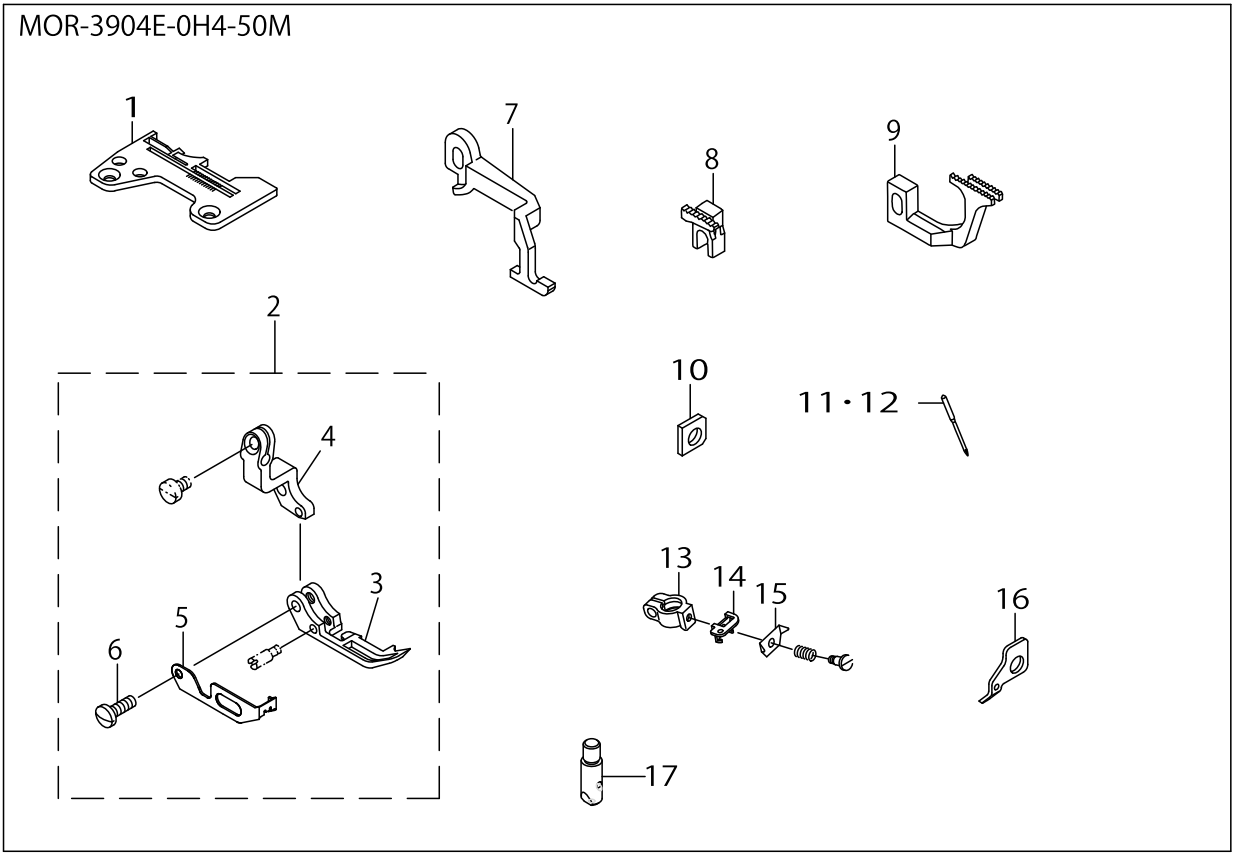
MOR-3900 SUBCLASSES (4)

No.	Parts No.	Parts name	Remarks	Level	Cons	Qty
1	R4200J0DD00	THROAT PLATE	FOR MOR-3905-0D4-210, MOR-3905E-0D4-210. FOR DOMESTIC USE FOR EXPORT			1
2	11939311	TOP FEED DOG				1
3	11845708	KNIFE				1
4	11845906	UPPER KNIFE				1
5	12180568	THREAD GUIDE PLATE ASM.				1
6	12105557	CLOTH PLATE ASM.				1
7	12104709	CLOTH PLATE COVER				1
8	MDC270B0900	NEEDLE DCX27 #9				1
9	11935764	PRESSER ASM.				1
10	11929213	PRESSER FOOT				1
				*		



MOR-3900 SUBCLASSES (5)

No.	Parts No.	Parts name	Remarks	Level	Cons	Qty
1	R4300J0EE00	THROAT PLATE				1
2	12330304	TOP FEED DOG				1
3	11882206	MAIN FEED DOG				1
4	11885100	DIFFERENTIAL FEED DOG				1
5	12320453	PRESSER FOOT ASM.				1
6	11930609	HINGE PIN		*		1
7	12320404	PRESSER FOOT		*		1



MOR-3900 SUBCLASSES (6)

No.	Parts No.	Parts name	Remarks	Level	Cons	Qty
1	R4200J0HG00	THROAT PLATE				1
2	11946860	PRESSER FOOT ASM. (WITH GUARD)				1
3	11946803	PRESSER FOOT		*		1
4	11946902	PRESSER HINGE		*		1
5	11948908	FINGER GUARD		*		1
6	SS7091110SP	SCREW 9/64-40 L=10.5		*		1
7	11947207	TOP FEED DOG				1
8	11947009	MAIN FEED DOG				1
9	11947108	DIFFERENTIAL FEED DOG				1
10	11991809	GAUGE				1
11	MDC270B1600	NEEDLE DCX27 #16				1
12	MC033601000	NEEDLE B-27 NM100	FOR JE			1
13	12304309	NEEDLE CLAMP HOLDER				1
14	12304408	NEEDLE THREAD PRESSER GUIDE				1
15	12304507	NEEDLE THREAD PRESSER PLATE				1
16	12304606	TAKE-UP LEVER GUIDE				1
17	12303905	1-NEEDLE, NEEDLE CLAMP				1

LIST FOR INFORMATION OF CHANGE

As to the place changed, refer to the corresponding Rev.No.
When previous parts(Obsoleted part)and new parts(Added parts)are
not interchangeable with each other:
In this case,even obsoleted parts(D.)can be ordered with the
obsoleted part number,so select the parts with changed dates and
place your orders.

変更箇所は、該当Rev.No.版をご参照ください。
部品の互換性がない変更の場合は、削除された品番でも、ご注文できます。

No.1111-01・・・Rev.No.

*A:Added parts追加部品/D:Obsoleted parts削除部品/E:Erratum訂正

[illegible]

HOW TO MAKE USE OF THIS PARTS LIST

1.Explanation of codes

1)"*"mark.....means this part is changed from the previous parts book.

As to the details of the change, refer to the "List for information of change".

2)"#01".....refer to "Note" explanation at bottom of page.

2.Codes on the "Qty" column

- Each numeral indicates the number of parts required.
- "0.1" and "2.5" indicate the length (in meters) of the respective parts.

3.Parentheses mean that the corresponding part is a subpart that constructs an assembly part.

4.Dotted lines on the Figures indicate assembly parts.

1."注記"欄の記号説明

1) "*"印.....前回のパーツブックに比較して今回変更された部品を意味します。

変更内容は、"変更情報リスト"を参照してください。

2) "#01".....ページ下の"注記"の説明を参照してください。

2.数量欄の数字は、個数を表し、0.1、2.5等の数値は、長さ（単位メートル）を表します。

3.数量欄の（ ）は、組部品を構成している子部品であることを意味します。

4.イラストページの-----枠は、組構成であることを意味します。

NUMERICAL INDEX OF PARTS

PART NO	PAGE	REF NO.	PART NO	PAGE	REF NO.
11597101	2	10	12304408	12	14
11845708	8	3	12304507	12	15
11845906	8	4	12304606	12	16
11882206	4	17	12304705	2	13
11882206	10	3	12320404	4	14
11883303	6	25	12320404	10	7
11885100	4	18	12320453	4	12
11885100	10	4	12320453	10	5
11885605	6	4	12330304	10	2
11886207	2	11	B1657814B0E	2	5
11926003	2	8	MC033600900	6	28·29
11926102	4	22	MC033601000	12	11·12
11926102	6	33	MDC270B0900	8	8
11929213	8	10	MDC270B1400	6	28·29
11930609	4	21	MDC270B1600	12	11·12
11930609	6	32	R4200J0DD00	2	1
11930609	10	6	R4200J0DD00	8	1
11932159	2	7	R4200J0DD0C	2	9
11932258	4	20	R4200J0FD0B	2	2
11932258	6	31	R4200J0HG00	12	1
11935764	8	9	R4300J0DE00	4	1
11936705	2	3	R4300J0EE00	4	8
11936804	4	16	R4300J0EE00	10	1
11936804	6	24	R4300J0FE0B	4	15
11939311	8	2	R4300J0FE0B	6	1
11946803	12	3	R4300J0GE00	6	12
11946860	12	2	R4300J0HE00	6	23
11946902	12	4	SS6090620TP	2	15
11947009	12	8	SS7091110SP	12	6
11947108	12	9			
11947207	12	7			
11948908	12	5			
11991809	2	6			
11991809	4	19			
11991809	6	27			
11991809	12	10			
12104709	8	7			
12105557	8	6			
12112504	2	12			
12112702	2	14			
12171708	6	26			
12180469	6	30			
12180568	8	5			
12303905	12	17			
12304309	12	13			