

MODEL : LZ-2288

List No : 1095-01

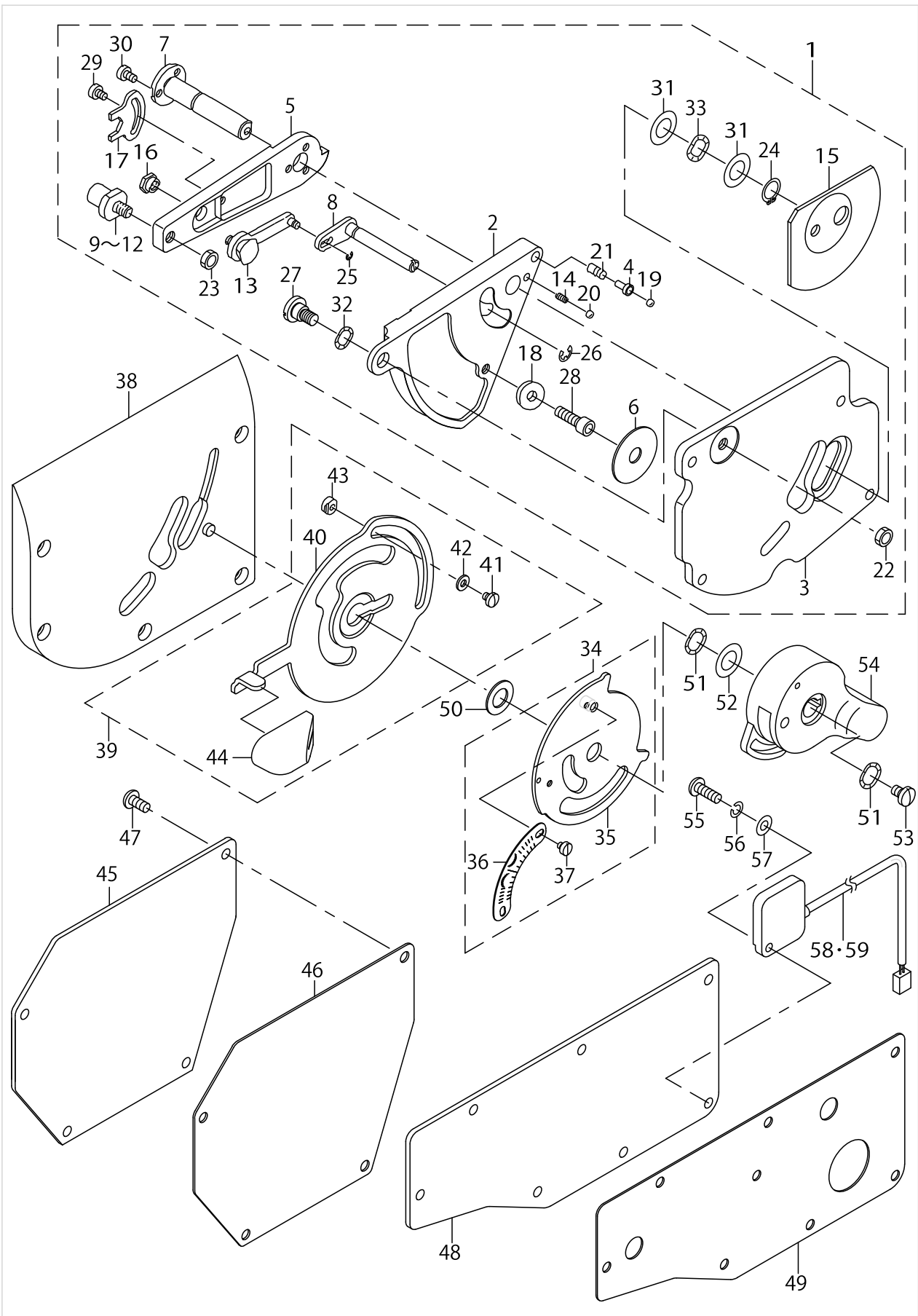
PARTS LIST

Published:09/10/2017

CONTENTS

EXCLUSIVE PARTS FOR LZ-2288	1
EXCLUSIVE PARTS FOR LZ-2288	5
SPECIFICATIONS.....	9
HOW TO MAKE USE OF THIS PARTS LIST	11

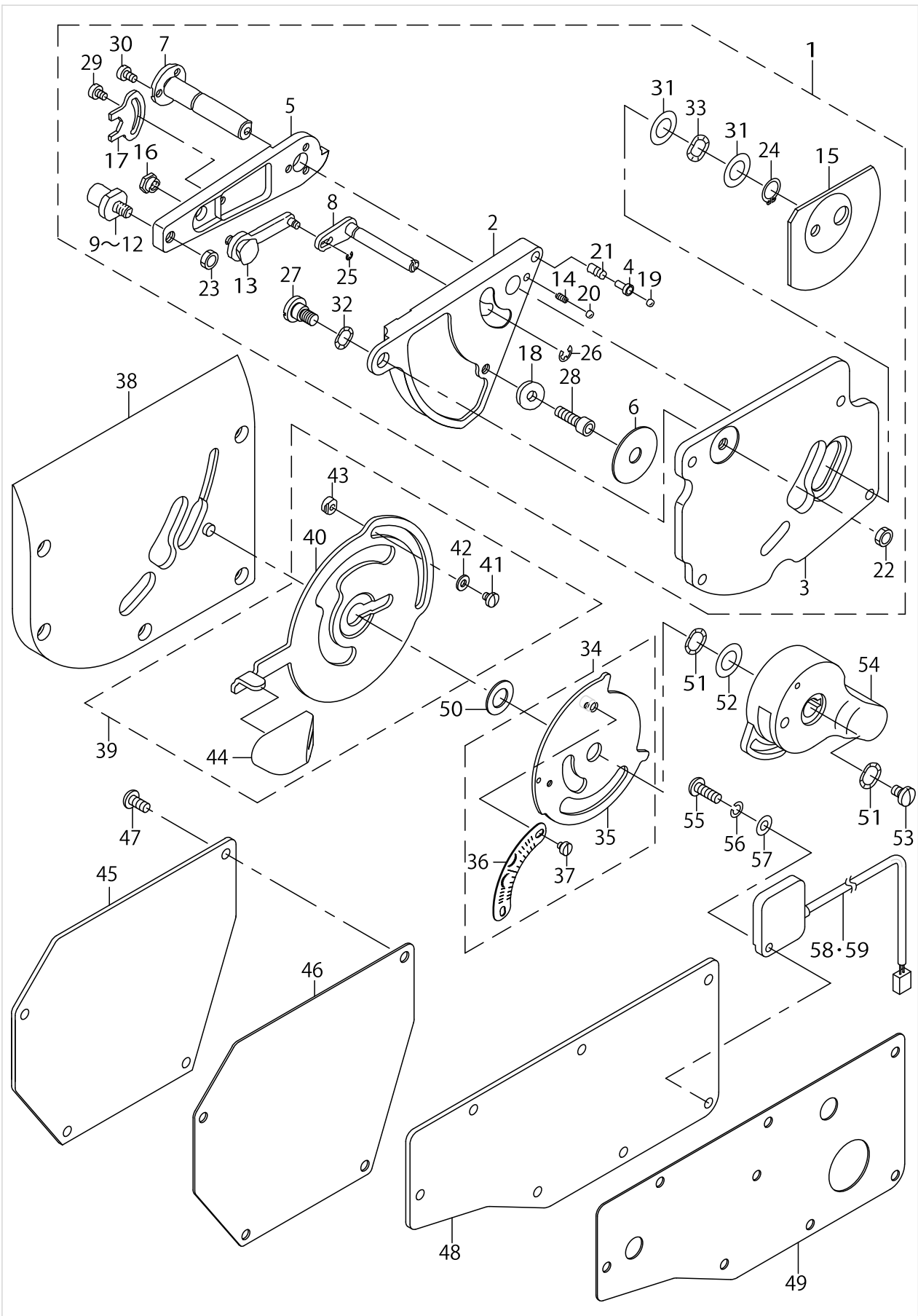
EXCLUSIVE PARTS FOR LZ-2288



EXCLUSIVE PARTS FOR LZ-2288

No.	Parts No.	Parts name	Remarks	Level	Cons	Qty
1	22572853	POSITION CHANGE BASE ASM.				1
2	22572804	NEEDLE POSITION CHANGE BASE		*		1
3	22572903	POSITION CHANGE FITTING PLATE		*		1
4	22573307	STOPPER		*		1
5	22573406	MOUNTING ADJUSTMENT ARM		*		1
6	22573505	FITTING SCREW PACKING		*		1
7	22512701	SHAFT		*		1
8	10015360	LEVER ASM.		*		1
9	10016210	SHAFT	SELECTIVE PARTS	*		1
10	10016319	SHAFT	SELECTIVE PARTS	*		1
11	10016418	SHAFT	SELECTIVE PARTS	*		1
12	10016517	SHAFT	SELECTIVE PARTS	*		1
13	10017168	STOPPER ASM.		*		1
14	10017408	SPRING		*		1
15	10017606	OIL SHIELD		*		1
16	10018000	NUT		*		1
17	10018109	NUT STOPPER		*		1
18	B1430761000	ROLLER		*		1
19	B2608761000	HAND STOP CRANK SHAFT BALL		*		1
20	B2608761000	HAND STOP CRANK SHAFT BALL		*		1
21	MAT02106000	SPRING		*		1
22	NS6150310SP	NUT 15/64-28		*		1
23	NS6150310SP	NUT 15/64-28		*		1
24	RC0100001KP	SNAP RING M10		*		1
25	RE0200000K0	E-RING		*		1
26	RE0400000K0	E-RING 4		*		1
27	SD0800402TP	HINGE SCREW D= 8 H= 4		*		1
28	SM6051602TP	SCREW M5X0.8 L=16		*		1
29	SS6090520SP	SCREW 9/64-40 L= 5.0		*		1
30	SS6090620SP	SCREW 9/64-40 L=6		*		3
31	WP1020616SD	WASHER		*		2
32	WZ0850302K0	WAVED WASHER 8.5X12.5X0.3		*		3
33	WZ1052010KP	WAVED WASHER		*		1
34	22573166	SCALE MOUNTING ASM.				1
35	22573158	SCALE FITTING PLATE COMPL.		*		1
36	22573000	SCALE MOUNTING		*		1
37	SS6080320SP	SCREW 1/8-44 L= 2.5		*		2
38	22568356	ARM SIDE COVER				1
39	22573257	POSITION CHANGE LEVER COMPL.				1
40	22573208	NEEDLE POSITION CHANGE LEVER		*		1
41	SS7090410SP	SCREW 9/64-40 L= 3.5		*		2
42	WP0371016SD	WASHER 3.7X8X1		*		2
43	10015907	LEVER STOPPER		*		2
44	22512602	KNOB		*		1
45	22568109	CAM COVER				1
46	22568208	CAM COVER PACKING				1
47	SS4121015SP	SCREW 3/16-28 L=10				4

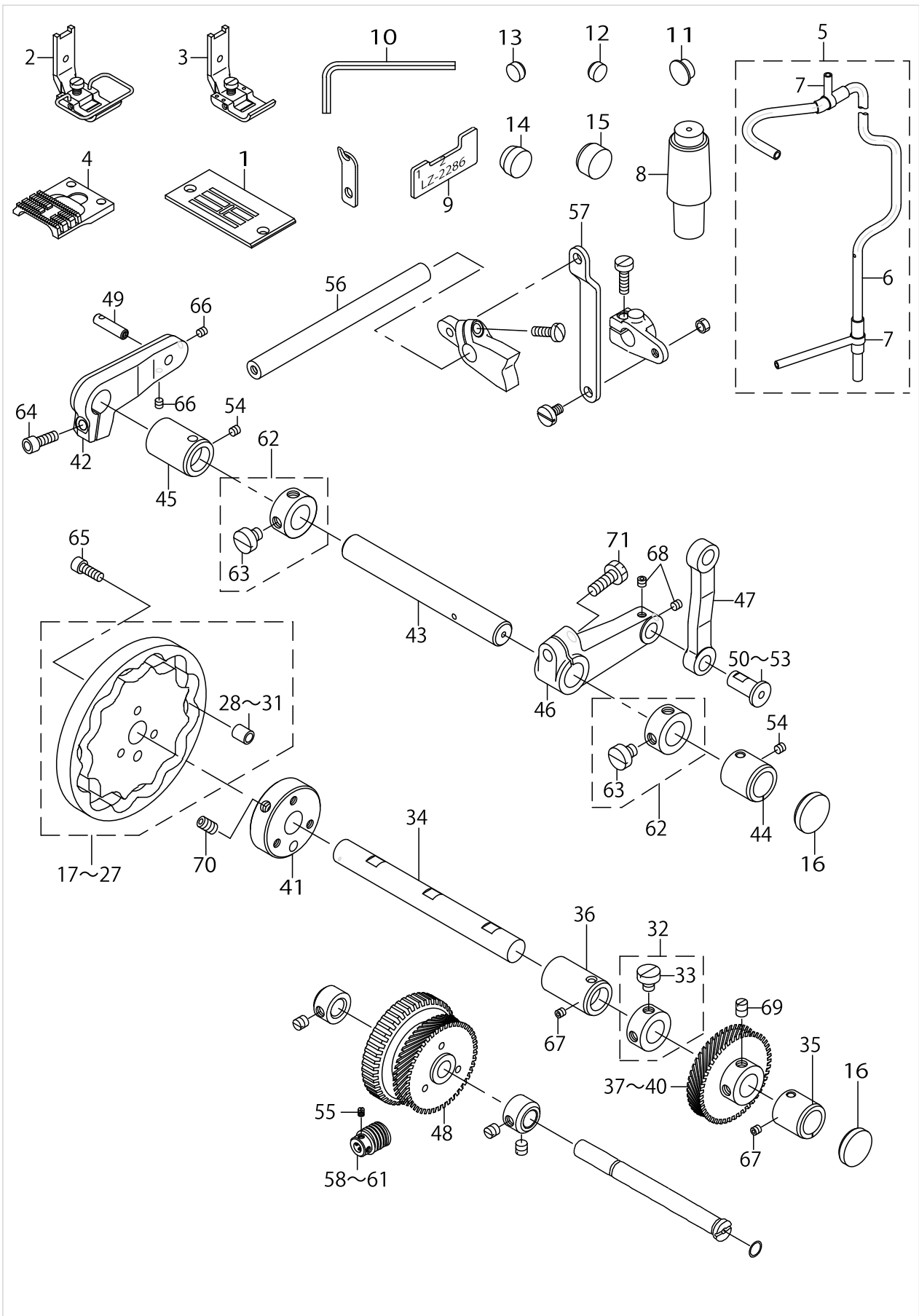
EXCLUSIVE PARTS FOR LZ-2288



EXCLUSIVE PARTS FOR LZ-2288

No.	Parts No.	Parts name	Remarks	Level	Cons	Qty
48	22567903	WINDOW PLATE				1
49	22568000	WINDOW PLATE PACKING				1
50	WP1021016SD	WASHER				1
51	WZ1052010KP	WAVED WASHER				2
52	WP1020616SD	WASHER				1
53	SS7620750SP	SCREW 3/16-32 L= 6.5				1
54	22512107	KNOB				1
55	SS4121415SP	SCREW 3/16-28 L=14	FOR LZ-2288-7			1
56	WS0510002KP	SPRING WASHER 5.1X9.2X1.3	FOR LZ-2288-7			1
57	WP0501016SD	WASHER 5X10.5X1	FOR LZ-2288-7			1
58	M6094350AAL	RESISTANCE PACK AL ASM.	FOR LZ-2288-7 NO NECESSARY PART ACCORDING TO DESTINATIONS			1
59	M6094350AAF	RESISTANCE PACK AF ASM.	FOR LZ-2288-7 NO NECESSARY PART ACCORDING TO DESTINATIONS			1

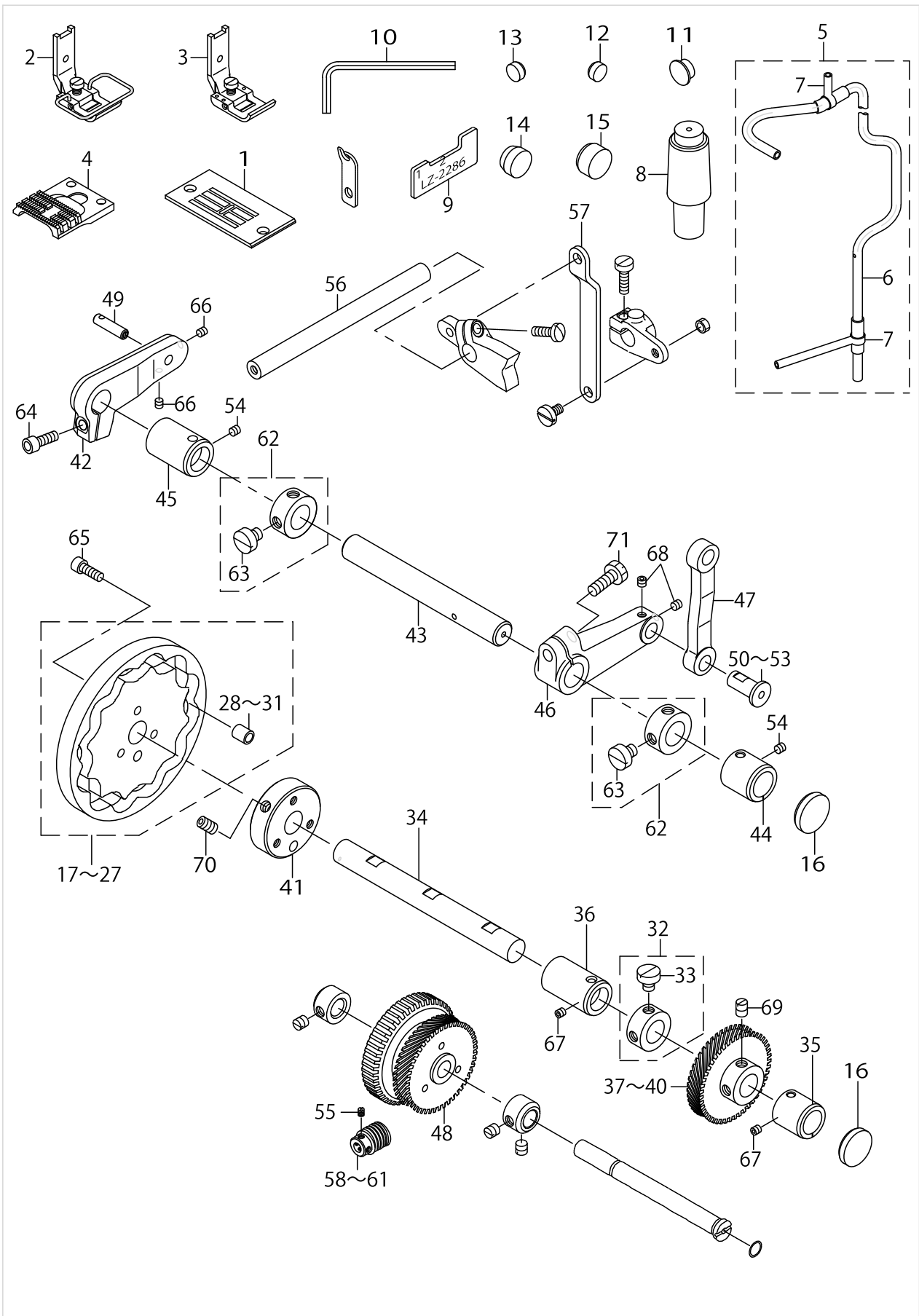
EXCLUSIVE PARTS FOR LZ-2288



EXCLUSIVE PARTS FOR LZ-2288

No.	Parts No.	Parts name	Remarks	Level	Cons	Qty
1	22581409	THROAT PLATE				1
2	22580864	PRESSER ASM.	NO NECESSARY PART ACCORDING TO DESTINATIONS			1
3	10055069	PRESSER A ASM.	NO NECESSARY PART ACCORDING TO DESTINATIONS			1
4	22581508	FEED				1
5	22574156	ARM SHAFT OIL PIPE ASM.				1
6	22574107	ARM SHAFT OIL PIPE		*		1
7	B3527552000	RUBBER JOINT		*		2
8	22574255	HEAD SUPPORT ROD ASM.				1
9	22586705	TIMING GAUGE				1
10	17348905	SOCKET SCREW KEYS				1
11	TA1050504R0	RUBBER PLUG				1
12	TA0980502R0	RUBBER PLUG				4
13	TA0980502R0	RUBBER PLUG				2
14	TA1550902R0	PLUG				1
15	TA1701002R0	RUBBER PLUG				1
16	TA2200502R0	RUBBER PLUG				2
17	22568851	CAM A ASM.	FOR LZ-2288A			1
18	22568950	CAM B ASM.	FOR LZ-2288B			1
19	22569057	CAM C ASM.	FOR LZ-2288C			1
20	22569156	CAM D ASM.	FOR LZ-2288D			1
21	22569255	CAM E ASM.	FOR LZ-2288E			1
22	22569354	NEEDLE VIBRATING CAM ASM. F	FOR LZ-2288F	*		1
23	22569453	NEEDLE VIBRATING CAM ASM. G	FOR LZ-2288G	*		1
24	22569552	NEEDLE VIBRATING CAM ASM. H	FOR LZ-2288H	*		1
25	22569651	NEEDLE VIBRATING CAM ASM. J	FOR LZ-2288J	*		1
26	22569750	NEEDLE VIBRATING CAM ASM. K	FOR LZ-2288K	*		1
27	22569859	NEEDLE VIBRATING CAM ASM. L	FOR LZ-2288L	*		1
28	22571103	CAM ROLLER A	SELECTIVE PARTS	*		1
29	22571202	CAM ROLLER B	SELECTIVE PARTS	*		1
30	22571301	CAM ROLLER C	SELECTIVE PARTS	*		1
31	22571400	CAM ROLLER D	SELECTIVE PARTS	*		1
32	CS140111ATH	THRUST COLLAR ASM. D=14 W=10.5				1
33	SS6660710TP	SCREW 1/4-40 L=7		*		2
34	22570006	CAM SHAFT				1
35	22570105	CAM SHAFT METAL A				1
36	22570204	CAM SHAFT BUSHING, B				1
37	22570303	CAM SHAFT GEAR A	SELECTIVE PARTS			1
38	22570402	CAM SHAFT GEAR B	SELECTIVE PARTS			1
39	22570501	CAM SHAFT GEAR B	SELECTIVE PARTS			1
40	22570600	CAM SHAFT GEAR D	SELECTIVE PARTS			1
41	22570758	CAM HOLDER COMPL.				1
42	22570907	CAM ARM				1
43	22571509	DRIVING SHAFT				1
44	22571608					1
45	22571707	DRIVING SHAFT METAL B				1





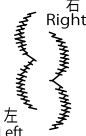
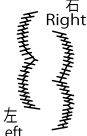
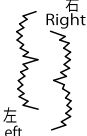
EXCLUSIVE PARTS FOR LZ-2288

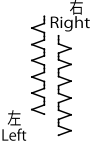
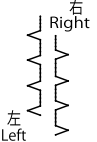
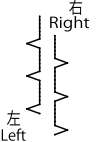
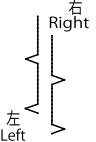


EXCLUSIVE PARTS FOR LZ-2288

No.	Parts No.	Parts name	Remarks	Level	Cons	Qty
46	22571806	DRIVING ARM				1
47	22571905	DRIVING ROD				1
48	22572457	WORM WHEEL COMPL.				1
49	22571004	CAM ROLLER SHAFT				1
50	22572002	DRIVING PIN A	SELECTIVE PARTS			1
51	22572101	DRIVING PIN B	SELECTIVE PARTS			1
52	22572200	DRIVING PIN C	SELECTIVE PARTS			1
53	22572309	DRIVING PIN D	SELECTIVE PARTS			1
54	SS8110422TP	SCREW 11/64-40 L=4				2
55	SS8660610TP	SCREW 1/4-40 L=6				4
56	22573802	SHAFT				1
57	22573901	FEEDER CHANGE LINK A				1
58	10053007	WORM ASM. A	SELECTIVE PARTS			1
59	10053106	WORM B	SELECTIVE PARTS			1
60	10053205	WORM	SELECTIVE PARTS			1
61	10053304	WORM	SELECTIVE PARTS			1
62	CS140111ATH	THRUST COLLAR ASM. D=14 W=10.5				2
63	SS6660710TP	SCREW 1/4-40 L=7		*		4
64	SM6051402TP	SCREW M5X0.8 L=14				1
65	SM6051402TP	SCREW M5X0.8 L=14				3
66	SM8040402TP	SCREW M4X0.7 L=4				2
67	SS8110422TP	SCREW 11/64-40 L=4				2
68	SS8110422TP	SCREW 11/64-40 L=4				2
69	SS8660810TP	SCREW 1/4-40 L=8				2
70	SS8661012TP	SCREW				2
71	SS9151740CP	SCREW 15/64-28 L=17				1

SPECIFICATIONS

模様名 Pattern name	2点千鳥 Standard zigzag	4点千鳥 3-step zigzag	3点千鳥 2-step zigzag	標準スカラップ Standard scallop	三日月スカラップ Lunette scallop	ア等巾スカラップ Constant-width scallop	等巾スカラップ Constant-width scallop
品番 Part No.	NO 1 22568851	NO 2 22568950	NO 3 22569057	NO 4 22569156	NO 5 22569255	NO 6 22569354	NO 7 22569453
品名 Part Name	針振りか A Needle rocking cam A	針振りか B Needle rocking cam B	針振りか C Needle rocking cam C	針振りか D Needle rocking cam D	針振りか E Needle rocking cam E	針振りか F Needle rocking cam F	針振りか G Needle rocking cam G
最大針振り巾 Max.zigzag width	6.0	8.0	8.0	8.0	8.0	8.0	8.0
最大模様巾 Max.pattern width	-	-	-	2.4	3.6	3.4	2.4
パターン針数 Number of stitches for a pattern	2	6	4	24	24	24	12
ステッチ パターン Stitch pattern							

ブラインド ステッチ Blind stitch	ブラインド ステッチ Blind stitch	ブラインド ステッチ Blind stitch	ブラインド ステッチ Blind stitch
NO 8	NO 9	NO 10	NO 11
22569552	22569651	22569750	22569859
針振りか H Needle rocking cam H	針振りか J Needle rocking cam J	針振りか K Needle rocking cam K	針振りか L Needle rocking cam L
6.0	6.0	6.0	6.0
-	-	-	-
4	6	8	12
			

SPECIFICATIONS

No.	Parts No.	Parts name	Remarks	Level	Cons	Qty
1	22568851	NEEDLE DRIVING CAM A ASM.				1
2	22568950	NEEDLE DRIVING CAM B ASM.				1
3	22569057	NEEDLE VIBRATING CAM ASM. C				1
4	22569156	NEEDLE DRIVING CAM D ASM.				1
5	22569255	NEEDLE DRIVING CAM E ASM.				1
6	22569354	NEEDLE VIBRATING CAM ASM. F				1
7	22569453	NEEDLE VIBRATING CAM ASM. G				1
8	22569552	NEEDLE VIBRATING CAM ASM. H				1
9	22569651	NEEDLE VIBRATING CAM ASM. J				1
10	22569750	NEEDLE VIBRATING CAM ASM. K				1
11	22569859	NEEDLE VIBRATING CAM ASM. L				1

HOW TO MAKE USE OF THIS PARTS LIST

1.As to "#01" and "#02" refer to the "Note" given at the bottom of the respective pages.

2.Codes on the "Qty" column

- Each numeral indicates the number of parts required.
- "0.1" and "2.5" indicate the length (in meters) of the respective parts.

3.Parentheses mean that the corresponding part is a subpart that constructs an assembly part.

4.Dotted lines on the Figures indicate assembly parts.

1. リストページの# 0 1、# 0 2の印は、ページ下の"注記"の説明を参照下さい。
2. 数量欄の数字は、個数を表し、0. 1、2. 5等の数値は、長さ（単位メートル）を表します。
3. 数量欄の（ ）は、組部品を構成している子部品であることを意味します。
4. イラストページの-----枠は、組構成であることを意味します。

NUMERICAL INDEX OF PARTS

PART NO	PAGE	REF NO.	PART NO	PAGE	REF NO.	PART NO	PAGE	REF NO.
10015360	2	8	22569859	6	17~27	22586705	6	9
10015907	2	43	22569859	10	11	B1430761000	2	18
10016210	2	9~12	22570006	6	34	B2608761000	2	20
10016319	2	9~12	22570105	6	35	B3527552000	6	7
10016418	2	9~12	22570204	6	36	CS140111ATH	6	62
10016517	2	9~12	22570303	6	37~40	CS140111ATH	8	62
10017168	2	13	22570402	6	37~40	M6094350AAF	4	58·59
10017408	2	14	22570501	6	37~40	M6094350AAL	4	58·59
10017606	2	15	22570600	6	37~40	MAT02106000	2	21
10018000	2	16	22570758	6	41	NS6150310SP	2	23
10018109	2	17	22570907	6	42	RC0100001KP	2	24
10053007	8	58~61	22571004	8	49	RE0200000K0	2	25
10053106	8	58~61	22571103	6	28~31	RE0400000K0	2	26
10053205	8	58~61	22571202	6	28~31	SD0800402TP	2	27
10053304	8	58~61	22571301	6	28~31	SM6051402TP	8	65
10055069	6	3	22571400	6	28~31	SM6051602TP	2	28
17348905	6	10	22571509	6	43	SM8040402TP	8	66
22512107	4	54	22571608	6	44	SS4121015SP	2	47
22512602	2	44	22571707	6	45	SS4121415SP	4	55
22512701	2	7	22571806	8	46	SS6080320SP	2	37
22567903	4	48	22571905	8	47	SS6090520SP	2	29
22568000	4	49	22572002	8	50~53	SS6090620SP	2	30
22568109	2	45	22572101	8	50~53	SS6660710TP	6	63
22568208	2	46	22572200	8	50~53	SS6660710TP	8	63
22568356	2	38	22572309	8	50~53	SS7090410SP	2	41
22568851	6	17~27	22572457	8	48	SS7620750SP	4	53
22568851	10	1	22572804	2	2	SS8110422TP	8	68
22568950	6	17~27	22572853	2	1	SS8660610TP	8	55
22568950	10	2	22572903	2	3	SS8660810TP	8	69
22569057	6	17~27	22573000	2	36	SS8661012TP	8	70
22569057	10	3	22573158	2	35	SS9151740CP	8	71
22569156	6	17~27	22573166	2	34	TA0980502R0	6	13
22569156	10	4	22573208	2	40	TA1050504R0	6	11
22569255	6	17~27	22573257	2	39	TA1550902R0	6	14
22569255	10	5	22573307	2	4	TA1701002R0	6	15
22569354	6	17~27	22573406	2	5	TA2200502R0	6	16
22569354	10	6	22573505	2	6	WP0371016SD	2	42
22569453	6	17~27	22573802	8	56	WP0501016SD	4	57
22569453	10	7	22573901	8	57	WP1020616SD	2	52
22569552	6	17~27	22574107	6	6	WP1020616SD	4	52
22569552	10	8	22574156	6	5	WP1021016SD	4	50
22569651	6	17~27	22574255	6	8	WS0510002KP	4	56
22569651	10	9	22580864	6	2	WZ0850302K0	2	32
22569750	6	17~27	22581409	6	1	WZ1052010KP	2	51
22569750	10	10	22581508	6	4	WZ1052010KP	4	51