

MODEL : MOL-154

List No : 1078-03

# PARTS LIST

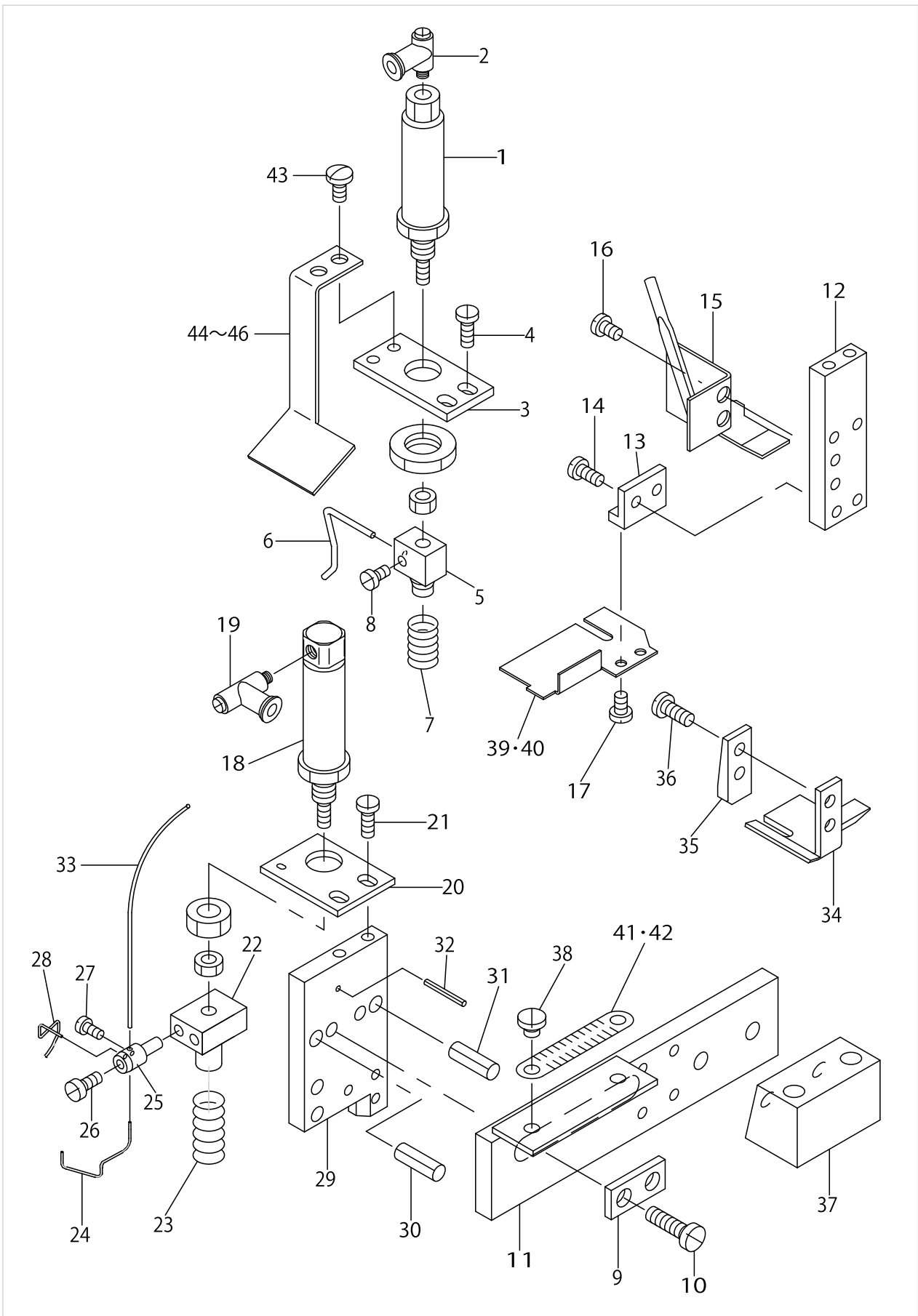
Published:09/10/2017

## CONTENTS

---

BELT LOOP SUPPORT COMPONENTS.....	1
BELT LOOP SUPPLY COMPONENTS.....	3
BELT LOOP BENDER COMPONENTS .....	5
BELT LOOP SEND COMPONENTS .....	9
KNIFE COMPONENTS.....	13
START SWITCH COMPONENTS.....	15
CONTROL BOX COMPONENTS .....	17
OPERATION BOX PANEL COMPONENTS.....	19
TABLE POWER SWITCH COMPONENTS.....	21
SUPPLY DEVICE BASE COMPONENTS .....	23
PNEUMATIC COMPONENTS .....	25
BELT RELEASE DEVICE COMPONENTS(OPTION).....	27
BELT SEND OUT DEVICE COMPONENTS(OPTION) .....	29
CHIP VACUUM DEVICE COMPONENTS(OPTION).....	31
LOWER THREAD COUNTER DEVICE COMPONENTS(OPTION).....	33
TRANSFORMATION LOOP GUIDE DEVICE COMPONENTS(OPTION).....	35
LIFTING STAND COMPONENTS(OPTION) .....	37
HOW TO MAKE USE OF THIS PARTS LIST .....	39

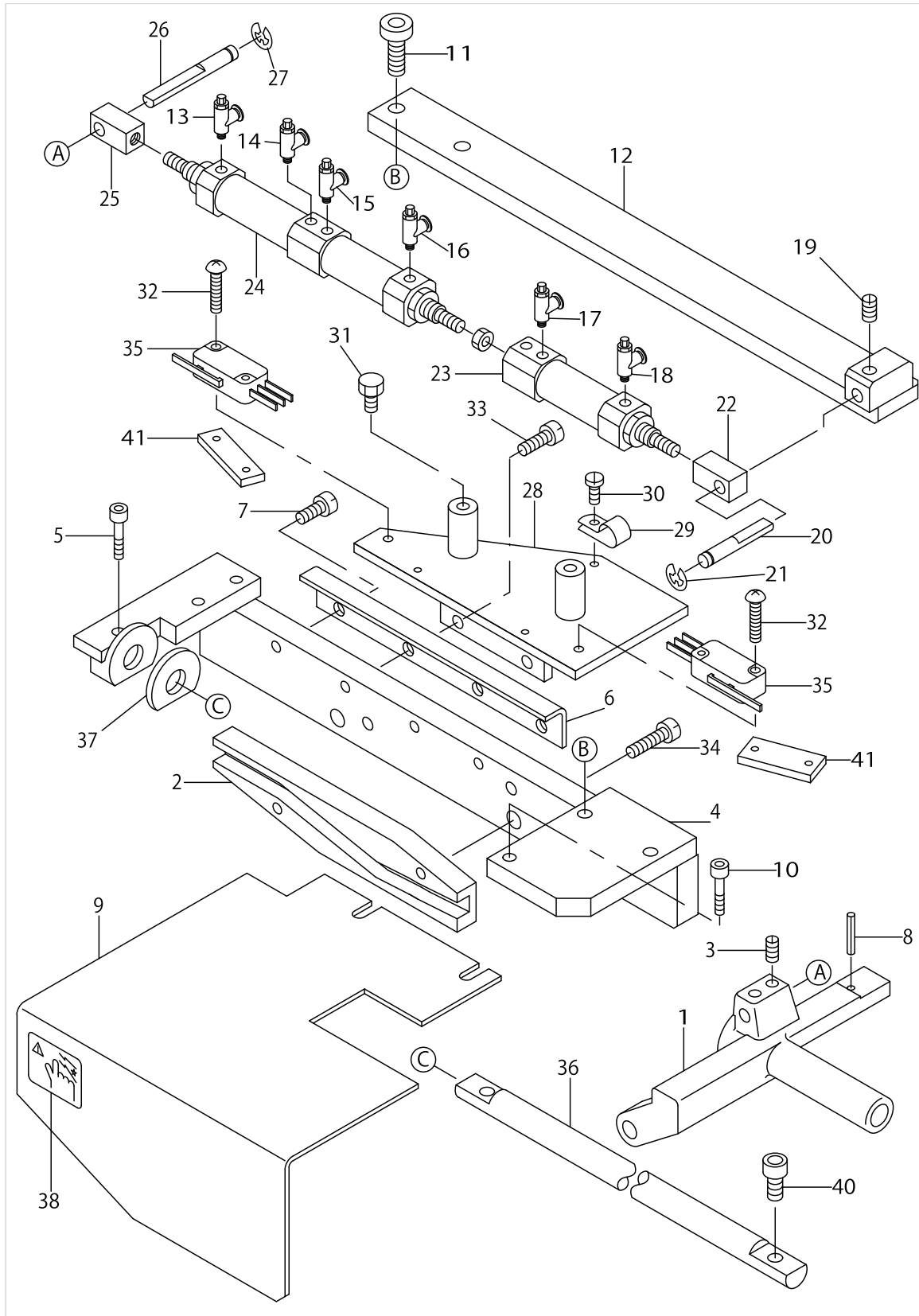
BELT LOOP SUPPORT COMPONENTS



BELT LOOP SUPPORT COMPONENTS

No.	Parts No.	Parts name	Remarks	Level	Cons	Qty
1	PA1001525A0	CYLIDER				1
2	PJ304040502	SWING ELBOW				1
3	G5041154000	REAR CYLINDER FITTING PLATE				1
4	SS7090710SL	SCREW 9/64-40 L=6.8				2
5	G5224100000	LOOP PRESSUR CYLINDER BRACKET				1
6	G5051154000	LOOP REAR GUIDE				1
7	G5168100000	PRESSER SPRING				1
8	SS4080610SP	SCREW 1/8-44 L=6.4				1
9	G5162103000	BINDER LOCK NUT PLATE				1
10	SS7111410SP	SCREW 11/64-40 L=14				1
11	G5035154000	ADJUSTER RAIL				1
12	G5038154000	REAR ARM				1
13	G5157122000	BINDER L-HEAD PLATE, REAR				1
14	SS7090710SL	SCREW 9/64-40 L=6.8				2
15	G5032154000	UPPER LOOPER GUIDE				1
16	SS7090510SP	SCREW 9/64-40 L= 4.6				2
17	SS7090510SP	SCREW 9/64-40 L= 4.6				2
18	PA1002506A0	CYINDER				1
19	PJ304040502	SWING ELBOW				1
20	G5040154000	FRONT CYLINDER FITTING PLATE				1
21	SS7090710SL	SCREW 9/64-40 L=6.8				2
22	G5169103000	LOOP PRESSURE CYLINDER BRACKET				1
23	G5168100000	PRESSER SPRING				1
24	G5039154000	PRESSER METALLIC FITTING				1
25	G5170100000	BELT-LOOP FRONT GUIDE SHAFT				1
26	SS4080610SP	SCREW 1/8-44 L=6.4				1
27	SS6080410SP	SCREW 1/8-44 L=4				1
28	G5033154000	FRONT GUIDE METALLIC FITTING				1
29	G5037154000	FRONT ARM				1
30	PS0500102KH	SPRING PIN 5.0X10				1
31	PS0500102KH	SPRING PIN 5.0X10				1
32	PS0160122KH	SPRING PIN 1.6X12				1
33	G5160100000	LOOP PRESSURE CYLINDER GUIDE,				1
34	G5034154000	LOOP FRONT HOLDING PLATE				1
35	G5042154000	WASHER PLATE				1
36	SS7090710SL	SCREW 9/64-40 L=6.8				2
37	G5036154000	ADJUTER RAIL BASE.				1
38	SS6060220SP	SCREW 3/32-56 L= 2.0				2
39	G515812200A	LOOP REAR RECEIVER	FOR 41~65MM (1-39/64"~2-9/16")			1
40	G515812200B	LOOP REAR RECEIVER	FOR 60~78MM (2-23/64"~3-5/64")			1
41	G5122100000	SCALE (METER)				1
42	G512210000A	SCALE (INCH)				1
43	SS7090710SP	SCREW 9/64-40 L= 6.8				2
44	G5307154000	STOPPER PLATE,55-62MM	FOR 55~62MM (2-11/64"~2-7/16")			1
45	G5308154000	STOPPER PLATE,63-70MM				1
46	G5309154000	STOPPER PLATE,71-78MM	FOR 71~78MM (2-25/32"~3-5/64")			1

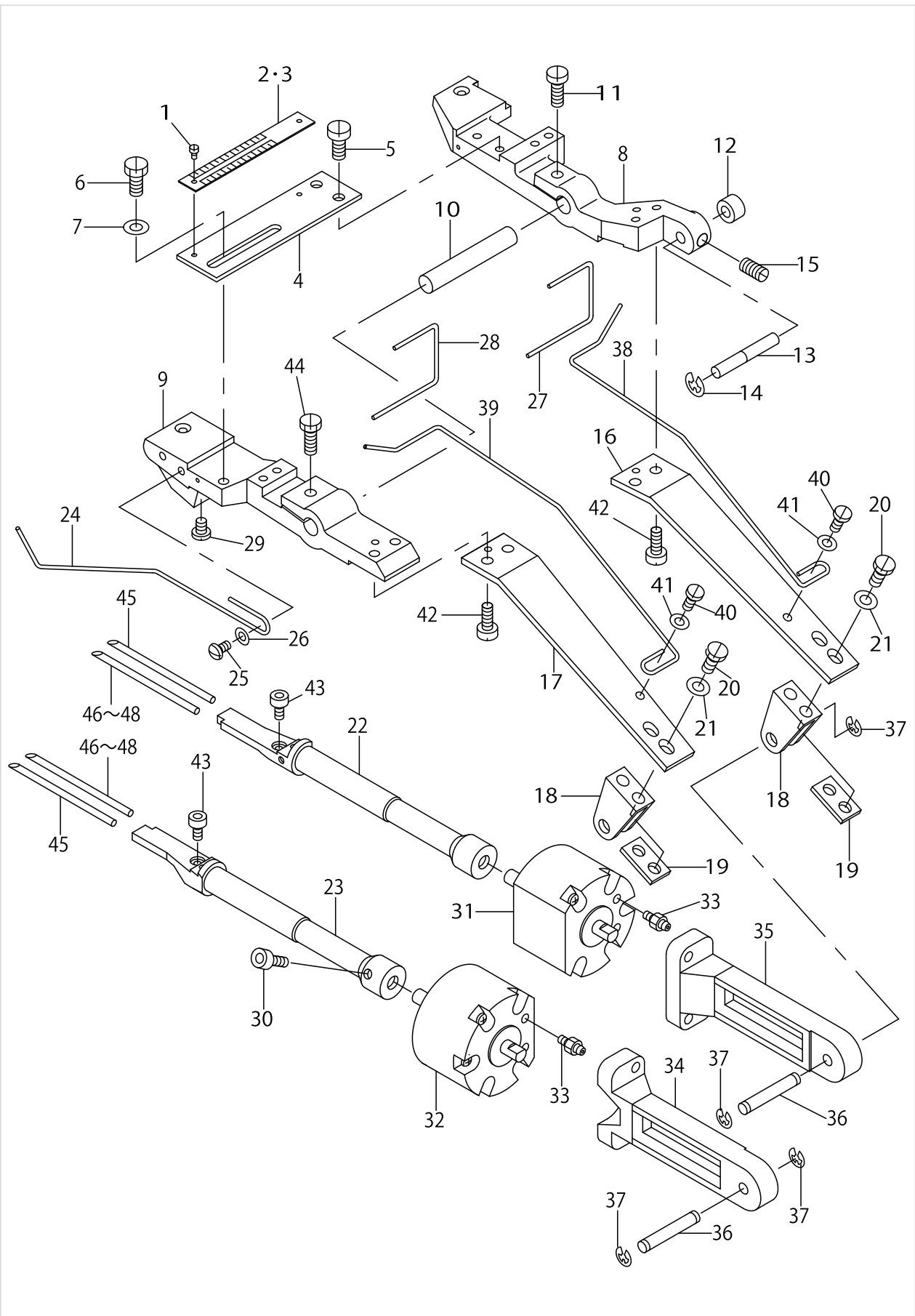
BELT LOOP SUPPLY COMPONENTS



BELT LOOP SUPPLY COMPONENTS

No.	Parts No.	Parts name	Remarks	Level	Cons	Qty
1	G5060154000	SLIDING BASE				1
2	G5062154000	SUPPLY CAM				1
3	SS8150810SP	SCREW 15/64-28 L=8				2
4	G5056154000	SUPPLY FRAME				1
5	SM6051602TP	SCREW M5X0.8 L=16				2
6	G5061154000	SLIDING GUIDE				1
7	SM6051002SP	SCREW M5 L=10				1
8	PS0300242K0	SPRING PIN 3.0X24				1
9	G5066154000	LOOP SUPPLY COVER				1
10	SM6051602TP	SCREW M5X0.8 L=16				2
11	SM6052502SP	SCREW M5 L=25				2
12	G5064154000	CYLINDER FITTING METALLIC				1
13	PC010508000	SPEED CONTROLLER				1
14	PC010508000	SPEED CONTROLLER				1
15	PC010508000	SPEED CONTROLLER				1
16	PC010508000	SPEED CONTROLLER				1
17	PC010508000	SPEED CONTROLLER				1
18	PC010508000	SPEED CONTROLLER				1
19	SS8150810SP	SCREW 15/64-28 L=8				1
20	G5186100000	MOVING CYLINDER PIN				1
21	RE0500000K0	E-RING				2
22	G5195100000	CYLINDER CONNECTING PIN				1
23	PA1602301A0	CYLINDER				1
24	PA1610801A0	CYLINDER				1
25	G5195100000	CYLINDER CONNECTING PIN				1
26	G5186100000	MOVING CYLINDER PIN				1
27	RE0500000K0	E-RING				1
28	G5065154000	SWITCH FITTING PLATE				1
29	HX00150000D	CABLE CLIP				1
30	SS7090710SP	SCREW 9/64-40 L= 6.8				1
31	SM9051003SE	SCREW M5 L=10				2
32	SM4862001SC	SCREW M2.6 L=20				4
33	SM6051202SP	SCREW M5X0.8 L=12				2
34	SM6051602TP	SCREW M5X0.8 L=16				2
35	HA002660000	MICRO SWITCH				2
36	G5057154000	GUIDE SHAFT.				1
37	G5058154000	RUBBR PLATE				1
38	22450704	SEAL				1
39	G5063154000	WASHER				1
40	SM6051002TP	SCREW M5X0.8 L=10				2
41	G5089100000	MICROSWITCH NUT PLATE				2

# BELT LOOP BENDER COMPONENTS

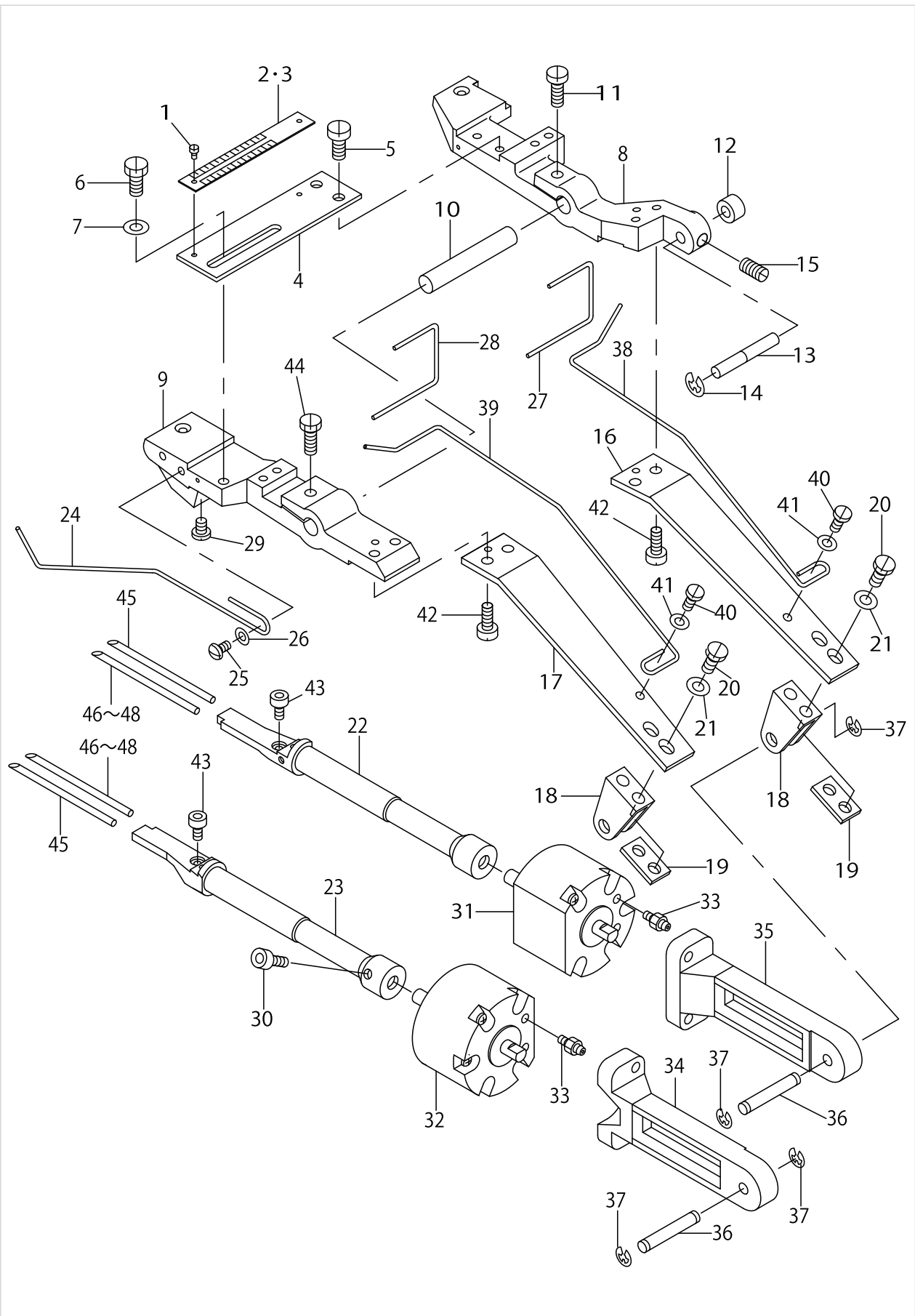


BELT LOOP BENDER COMPONENTS

No.	Parts No.	Parts name	Remarks	Level	Cons	Qty
1	SS6060220SP	SCREW 3/32-56 L= 2.0				2
2	G5071154000	SCALE PLATE (METER)				1
3	G5070154000	SCALE PLATE (INCH)				1
4	G5069154000	CONNECTING PLATE				1
5	SS6111010SP	SCREW 11/64-40 L= 9.5				1
6	SS9111010SP	SCREW 11/64-40 L=9.5				1
7	WP0450801SD	WASHER 4.5X10X0.8				1
8	G5068154000	SHAFT METAL				1
9	G5067154000	SHAFT METAL				1
10	G5187103000	SUPPLY CAM LEVER SHAFT				1
11	SS6111140SP	SCREW 11/64-40 L=11				1
12	G5281100000	BELT-LOOP SUPPLY CAM BALL				1
13	G5280100000	BELT-LOOP SUPPLY CAM SHAFT				1
14	RE0500000K0	E-RING				1
15	SS8150810SP	SCREW 15/64-28 L=8				1
16	G5265103000	CYLINDER PLATE, REAR				1
17	G5263103000	CYLINDER PLATE, FRONT				1
18	G5273100000	CYLINDER INSTALLING PLATE				2
19	G5275100000	FOLDER ROTATION CYLINDER NUT P				2
20	SS9111010SP	SCREW 11/64-40 L=9.5				4
21	WP0450801SD	WASHER 4.5X10X0.8				4
22	G5166154000	SHAFT				1
23	G5165154000	SHAFT				1
24	G5251100000	FRONT AUXILIARY GUIDE PIN				1
25	SS7090510SP	SCREW 9/64-40 L= 4.6				2
26	WP0450801SD	WASHER 4.5X10X0.8				2
27	G5072154000	STOPPER				1
28	G5072154000	STOPPER				1
29	SS7090510SP	SCREW 9/64-40 L= 4.6				2
30	SM6040802TP	SCREW M4X0.7 L=8				2
31	G5262103000	ROTARY ACTUATOR				1
32	G5262103000	ROTARY ACTUATOR				1
33	PJ032059006	BARB JOINT				4
34	G5266103000	CYLINDER BASE				1
35	G5266103000	CYLINDER BASE				1
36	G5274100000	CYLINDER HOLDING PIN				2
37	RE0400000K0	E-RING 4				4
38	G5272103000	FOLDER SHAFT SPRING, REAR				1
39	G5271103000	FOLDER SHAFT SPRING, FRONT				1
40	SS7090710SL	SCREW 9/64-40 L=6.8				2
41	WP0450801SD	WASHER 4.5X10X0.8				2
42	SS6111010SP	SCREW 11/64-40 L= 9.5				4
43	SM6030502TP	BOLT M3X5				2
44	SS9111510SP	SCREW 11/64-40 L=15				1
45	G5167154000	FOLDER PIN, LOWER				2
46	G5167154000	FOLDER PIN, LOWER				2
47	G5168154000	FOLDER PIN, UPPER (4MM)	ACCESSORIES PART			2



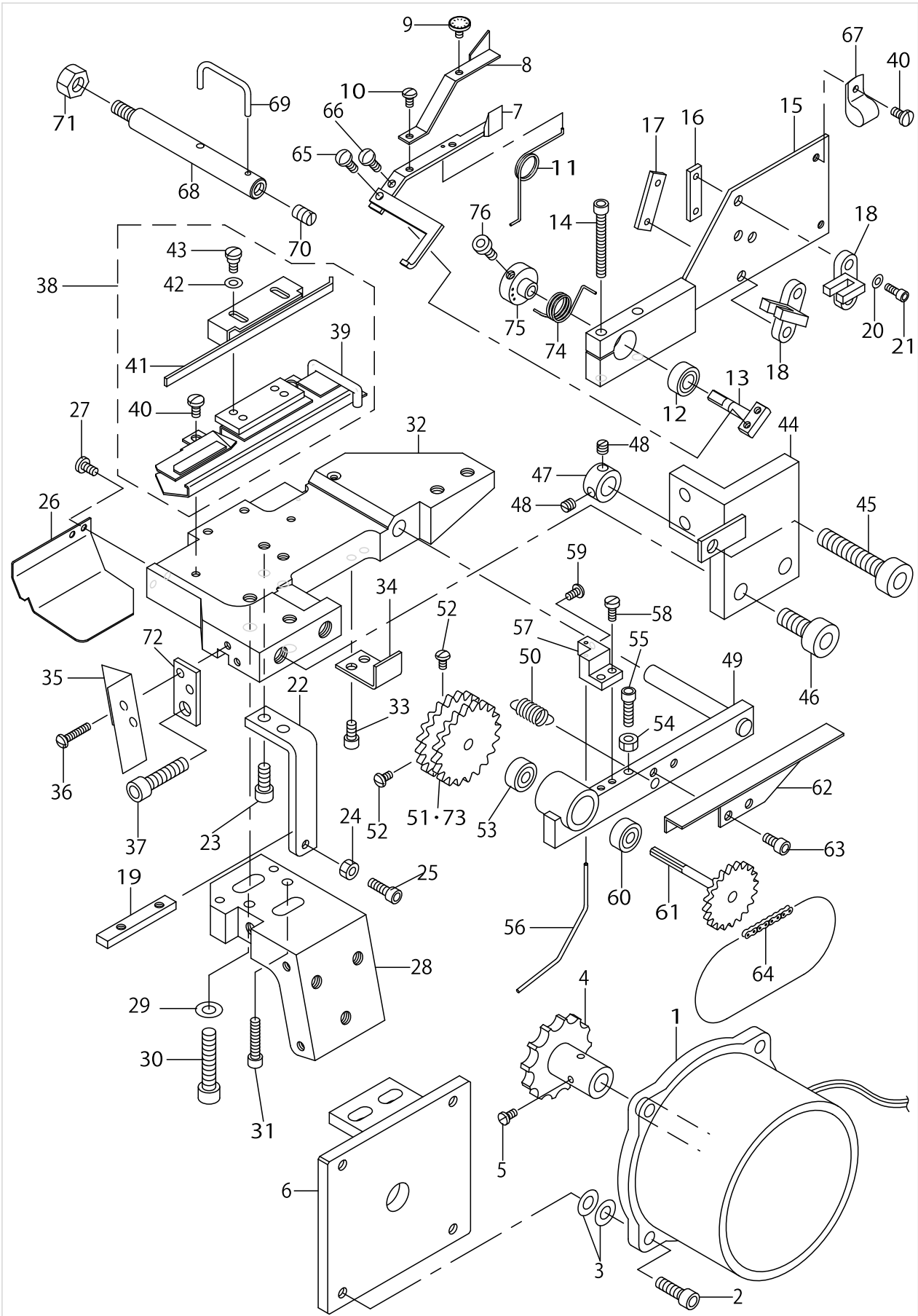
# BELT LOOP BENDER COMPONENTS



BELT LOOP BENDER COMPONENTS

No.	Parts No.	Parts name	Remarks	Level	Cons	Qty
48	G5169154000	FOLDER PIN, UPPER (2.6MM)	ACCESSORIES PART			2

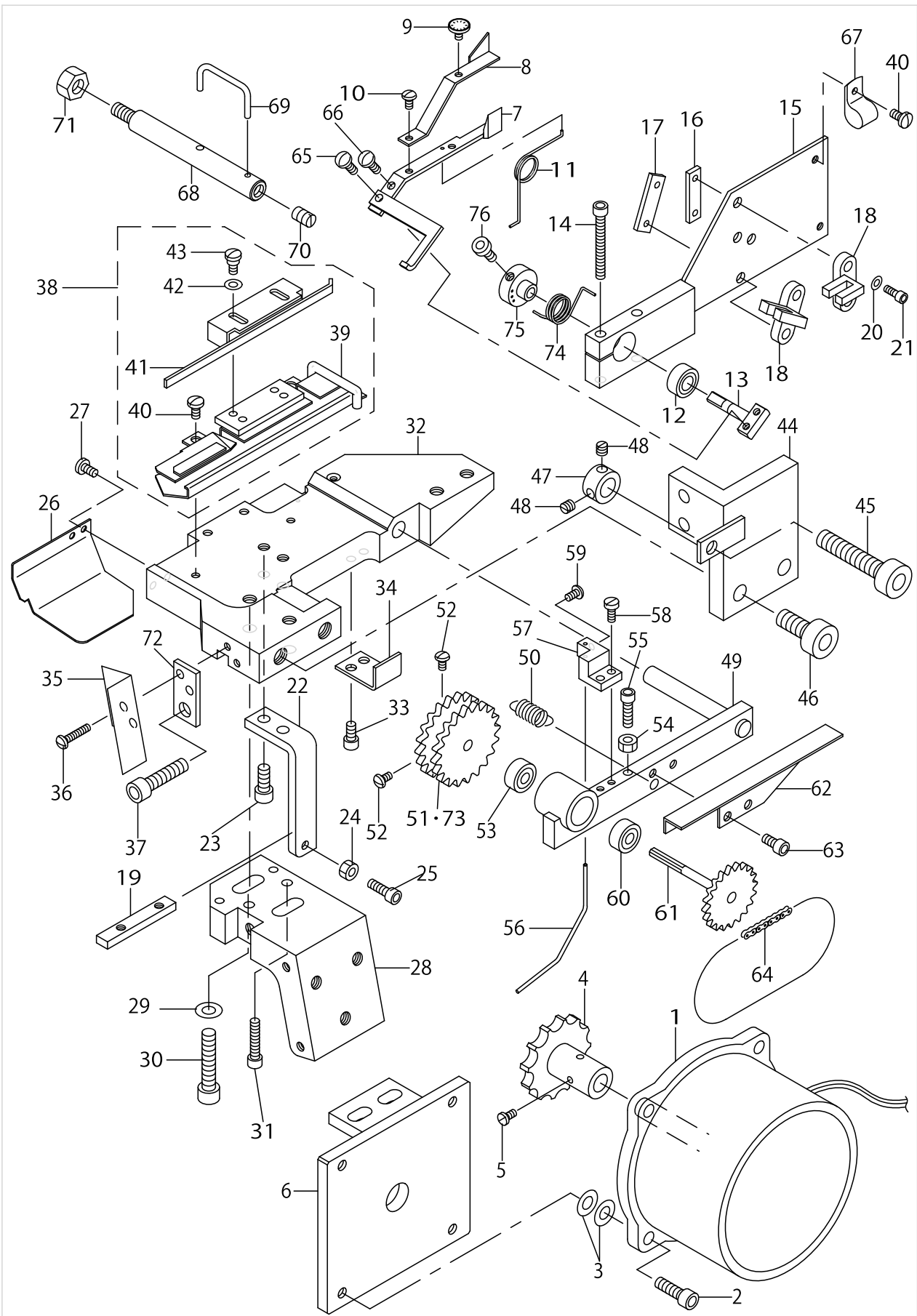
BELT LOOP SEND COMPONENTS



BELT LOOP SEND COMPONENTS

No.	Parts No.	Parts name	Remarks	Level	Cons	Qty
1	G61901030A0	LOOP FEEDING MOTOR ASM.				1
2	SM6051602TP	SCREW M5X0.8 L=16				4
3	B2107816000	WASHER				8
4	G5718100000	MOTOR SPROCKET				1
5	SS4080610SP	SCREW 1/8-44 L=6.4				2
6	G5013154000	MOTOR BRACKET				1
7	G5029154000	DETECTOR ADJUSTING PLATE				1
8	G5030154000	DETECTOR ADJUSTING PLATE				1
9	G5235200000	REGULATING SCREW				1
10	SS4080415SP	SCREW 1/8-44 L=4				1
11	G5233100000	SPRING				1
12	G2431122000	BEARING				2
13	G5225154000	METAL SHAFT				1
14	SM6043552TN	SCREW M4 L=35				2
15	G5028154000	DETECTOR BASE				1
16	G5031154000	PLATE				1
17	G5031154000	PLATE				1
18	HD000760000	DETECTOR SWITCH				2
19	G5003154000	FEEDING BASE PLATE				1
20	WP0320500SC	WASHER M3				4
21	SM6030802TN	BOLT				4
22	G5009154000	ROLLER LEVER SPRING RACK				1
23	SM6051202TP	SCREW M5X0.8 L=12				2
24	NM6040003SC	NUT M4				1
25	SM6041202TN	SCREW M4X0.7 L=12				1
26	G5025154000	PLATE				1
27	SS7090710SL	SCREW 9/64-40 L=6.8				2
28	G5002154000	BRACKET				1
29	WP0641601SC	WASHER				2
30	SM6063002TP	SCREW M6 L=30				2
31	SM6042002TN	BOLT				2
32	G5001154000	LOOP FEEDING BASE				1
33	SM6040802TN	SCREW				2
34	G5005154000	LEVER GUIDE PLATE				1
35	G5026154000	CHIP PLATE				1
36	SS4080610SP	SCREW 1/8-44 L=6.4				2
37	SM6062502TN	HEXAGONAL-HOLE BOLT				1
38	G50151540A0	ADJUSTING BINDER ASM.				1
39	G5015154000	LOOP BINDER		*		1
40	SS7090710SP	SCREW 9/64-40 L= 6.8		*		2
41	G5016154000	BINDER REMOVING RULER		*		1
42	WP0450801SD	WASHER 4.5X10X0.8		*		2
43	G5723100000	SCREW		*		2
44	G5020154000	KNIFE INSTALING PLATE				1
45	SM6064002TN	HEXAGONAL-HOLE BOLT				1
46	SM6082002TN	SCREW M8 L=20				2
47	G5204100000	COLLAR				1

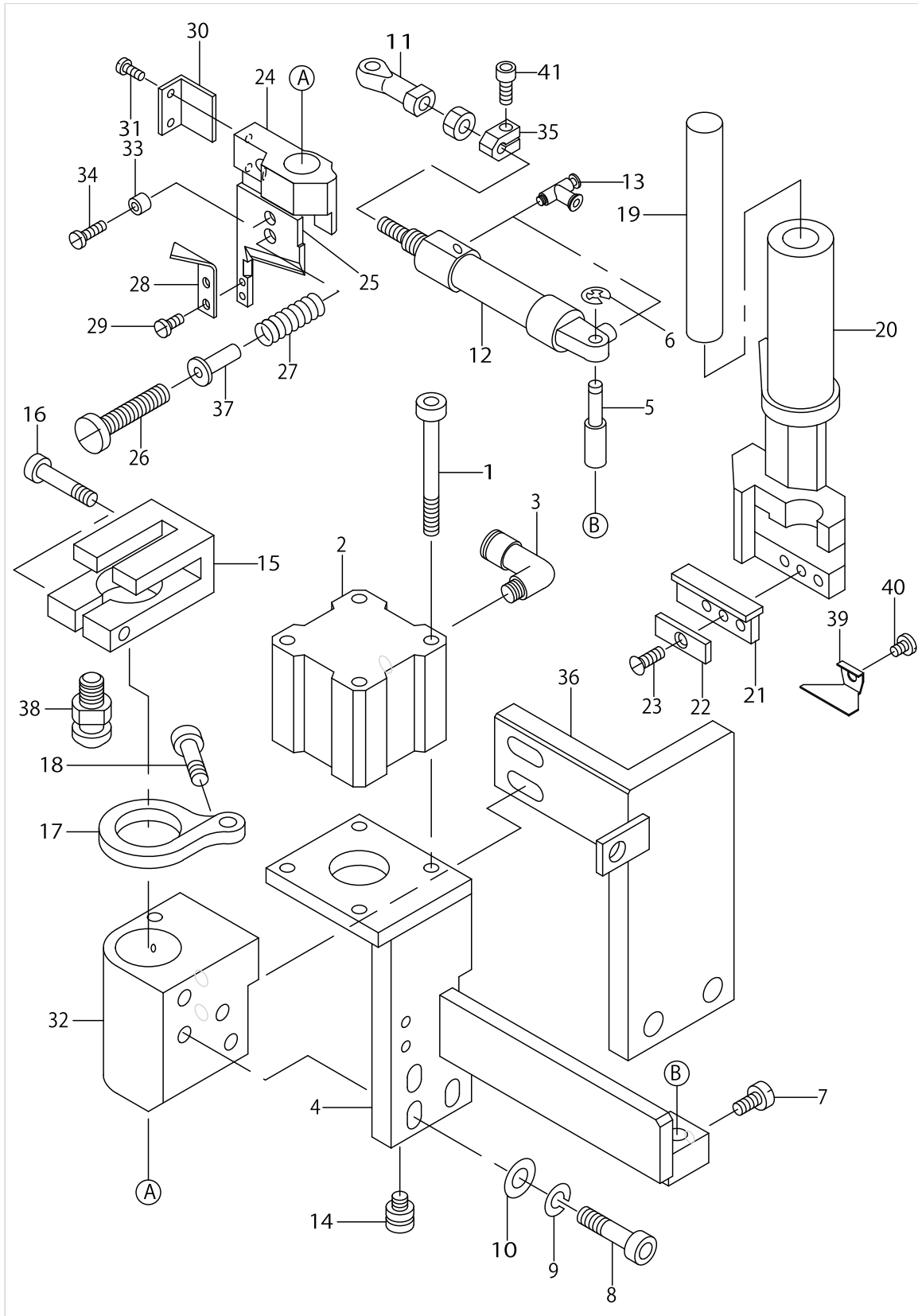
BELT LOOP SEND COMPONENTS



BELT LOOP SEND COMPONENTS

No.	Parts No.	Parts name	Remarks	Level	Cons	Qty
48	SS8110310SP	SCREW 11/64-40 L= 2.8				2
49	G5006154000	ROLLER LEVER				1
50	G5707100000	LOOP FEEDING ROLLER SPRING				1
51	G5012154000	ROLLER(60 COGS)				1
52	SS4080610SP	SCREW 1/8-44 L=6.4				2
53	G5222200000	BEARING				2
54	NM6040001SD	NUT M4				1
55	G5403154000	SCREW				1
56	G5010154000	LOOP GUIDE				1
57	G5011154000	LOOP GUIDE SUPPORT				1
58	SS6080810SP	SCREW 1/8-44 L= 8.0				2
59	SS4080610SP	SCREW 1/8-44 L=6.4				1
60	G5222200000	BEARING				1
61	G5220200000	ROLLER SPROCKET				1
62	G5008154000	CHAIN COVER				1
63	SM6040802TN	SCREW				2
64	G5007154000	ROLLER CHAIN				1
65	SS4080610SP	SCREW 1/8-44 L=6.4				1
66	SS4080610SP	SCREW 1/8-44 L=6.4				1
67	HX000230000	CLAMP				2
68	G5017154000	BELT-LOOP GUIDE BAR				1
69	G5020500000	BELT-LOOP GUIDE				1
70	SS8150920SP	SET-SCREW				1
71	NS6150430SN	NUT 15/64-28				1
72	G5004154000	GUIDE SCREW SUPPORT				1
73	G5219200000	ROLLER	FOR LIGHT-WEIGHT MATERIALS (OPTION)			1
74	G5226154000	SPRING				1
75	G5227154000	COLLAR				1
76	SM6041002TN	BOLT				1

# KNIFE COMPONENTS

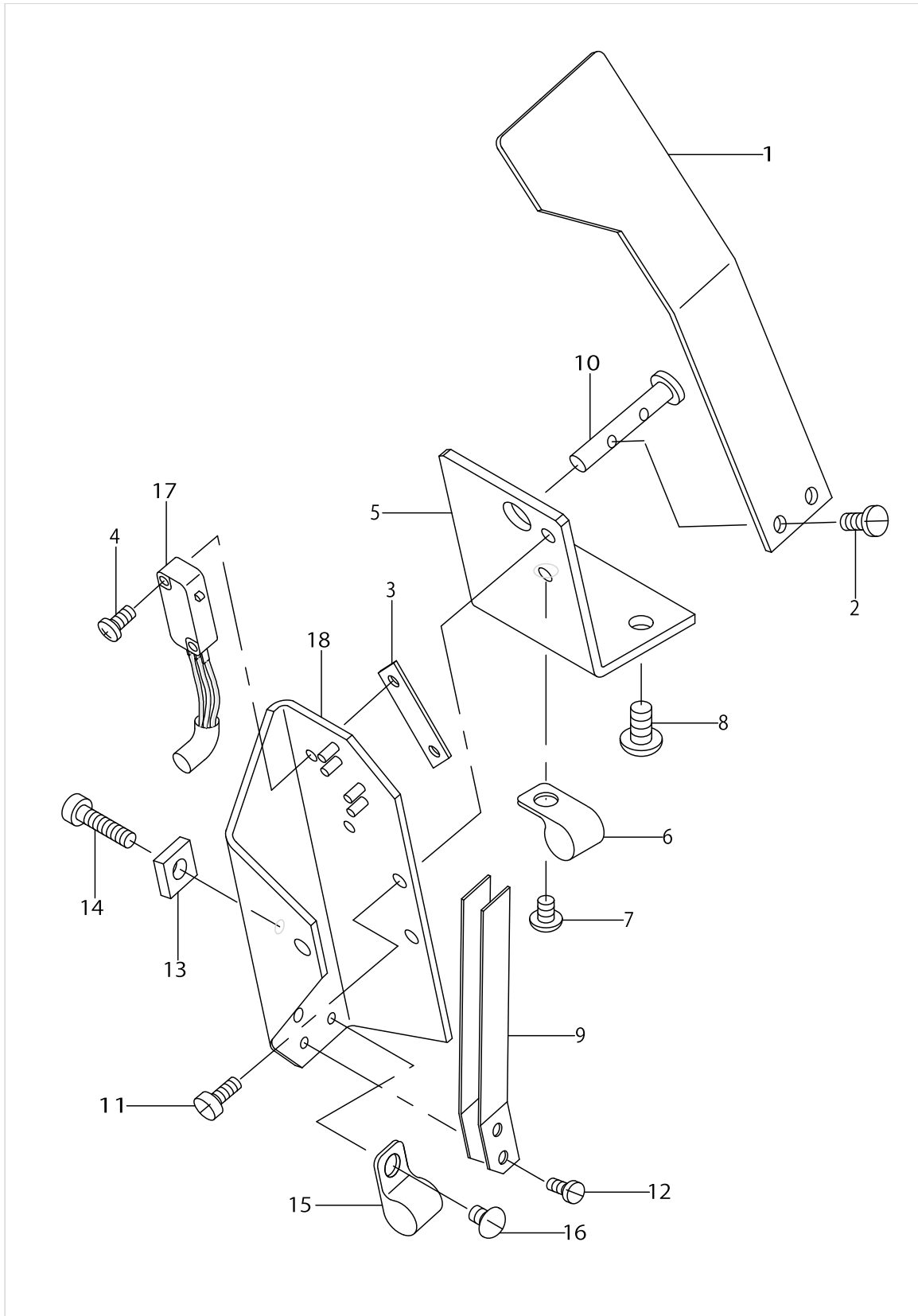


KNIFE COMPONENTS

No.	Parts No.	Parts name	Remarks	Level	Cons	Qty
1	SM6054002TN	SCREW M5X0.8 L=40				4
2	PA320110200	CYLINDER				1
3	PJ304065101	ELBOW UNION 6XPT1/8				2
4	G5022154000	FITTING BRACKET				1
5	G5753103000	PIN				1
6	RE0400000K0	E-RING 4				1
7	SS9111010SP	SCREW 11/64-40 L=9.5				1
8	SM6062002TR	SCREW M6 L=20				3
9	WS0610002KN	SPRING WASHER 6.1X12.2X1.5				3
10	WP0641601SC	WASHER				3
11	G5760103000	CYLINDER BRACKET				1
12	PA1003503A0	CYLINDER				1
13	PJ304040502	SWING ELBOW				2
14	G5762103000	FITTING SCREW PIN				1
15	G5521103000	SHAFT HOLDER				1
16	SM6052002TR	SCREW M5 L=20				1
17	G5752103000	FIXED KNIFE BASE				1
18	SM6051552SP	SCREW M5 L=15				1
19	G5517103000	MOVING KNIFE SHAFT				1
20	G5502103000	FIXED KNIFE BASE				1
21	G5503103000	FIXED KNIFE				1
22	G5504103000	FIXED KNIFE PLATE				1
23	SS2090710TP	SCREW 9/64-40 L=7.2				1
24	G5506103000	MOVING KNIFE BASE				1
25	G5511103000	MOVING KNIFE				1
26	G5513103000	SCREW				1
27	G5514103000	SPRING				1
28	G5516103000	LOOP RECEIVER				1
29	SS4080610SP	SCREW 1/8-44 L=6.4				2
30	G5507103000	MOVING KNIFE BASE STOPPER				1
31	SS7090710SP	SCREW 9/64-40 L= 6.8				2
32	G5021154000	BUSHING				1
33	G5512103000	COLLAR				1
34	SS6080810SP	SCREW 1/8-44 L= 8.0				1
35	G5023154000	COLLAR				1
36	G5020154000	KNIFE INSTALING PLATE				1
37	G5515103000	SPRING COLLAR				1
38	G5762103000	FITTING SCREW PIN				1
39	G5505103000	KNIFE BASE LOOP GUIDE				1
40	SS7090510SL	SCREW 9/64-40 L=4.6				1
41	SM6041002TN	BOLT				1



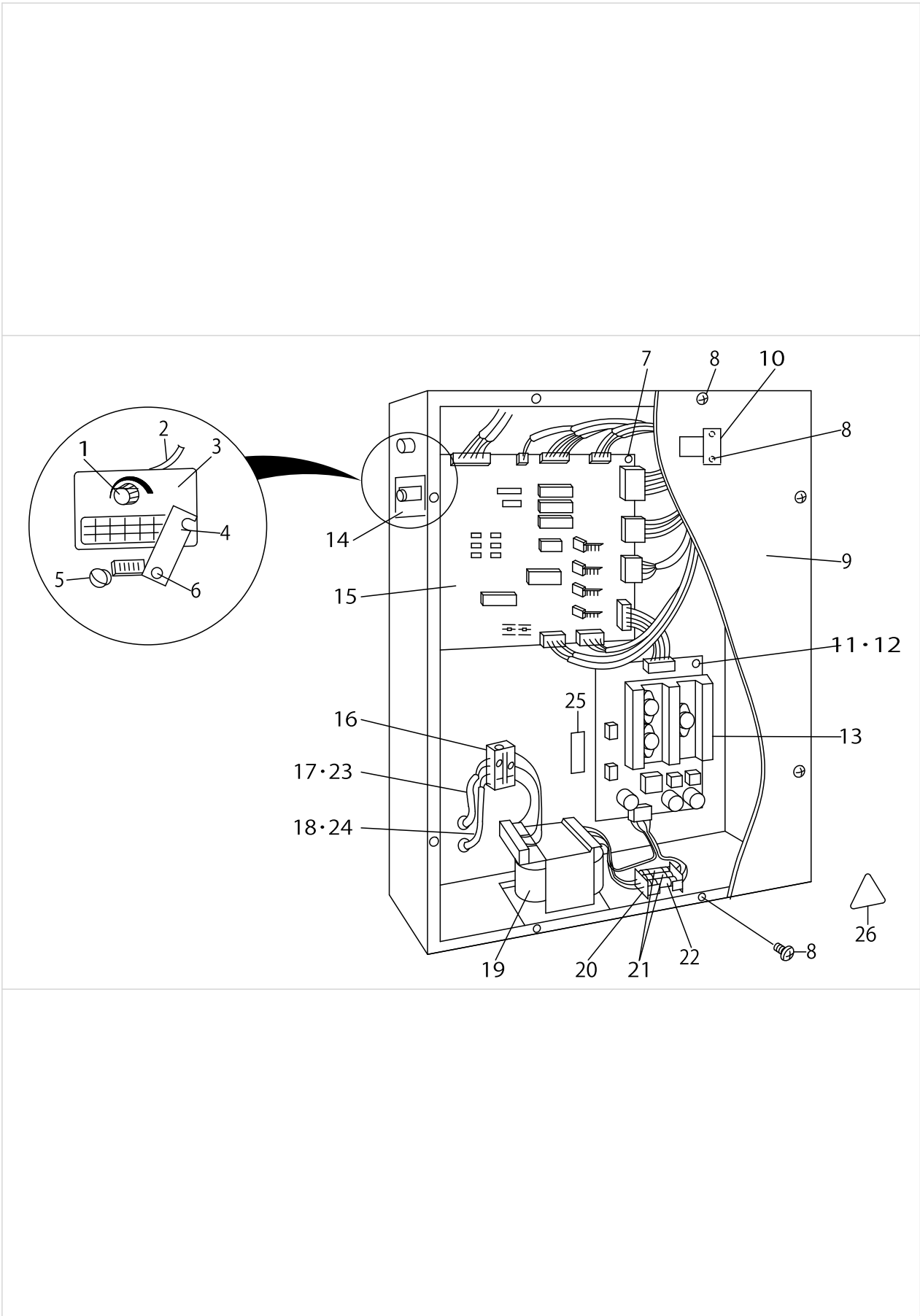
START SWITCH COMPONENTS



START SWITCH COMPONENTS

No.	Parts No.	Parts name	Remarks	Level	Cons	Qty
1	G5077154000	SWITCH PUSHING PLATE				1
2	SS7090510SP	SCREW 9/64-40 L= 4.6				2
3	G5089100000	MICROSWITCH NUT PLATE				1
4	SM4861601SC	SCREW M2.6 L=16				2
5	G5078154000	SWITCH FITTING PLATE				1
6	HX000230000	CLAMP				1
7	SS7090510SP	SCREW 9/64-40 L= 4.6				1
8	SM0051001SC	SCREW				2
9	G5420100000	SPRING PLATE				2
10	G5421100000	PIVOT PIN				1
11	SS6111010SP	SCREW 11/64-40 L= 9.5				2
12	SS7090510SP	SCREW 9/64-40 L= 4.6				2
13	NS6110350SP	NUT 11/64-40				1
14	SS9111510SP	SCREW 11/64-40 L=15				1
15	HX000230000	CLAMP				1
16	SS7090510SP	SCREW 9/64-40 L= 4.6				1
17	G5061100000	MICROSWITCH				1
18	G5417103000	SWITCH INSTALLING PLATE				1

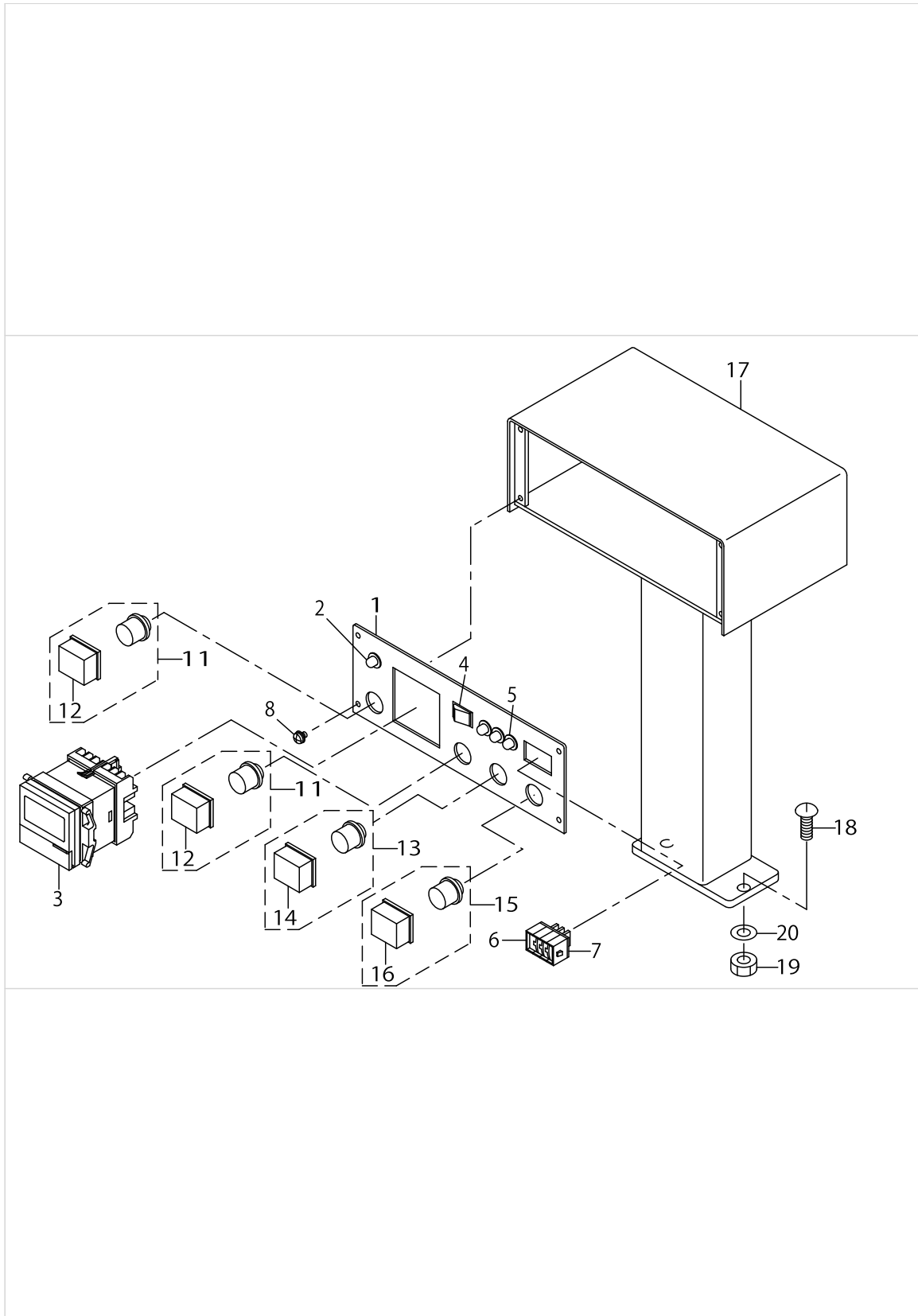
# CONTROL BOX COMPONENTS



CONTROL BOX COMPONENTS

No.	Parts No.	Parts name	Remarks	Level	Cons	Qty
1	HX001420000	KNOB				1
2	G6123154000	POWER CORD				1
3	G6501154000	SEAL				1
4	G6104154000	DIP SWITCH COVER				1
5	G6516154000	SCREW				1
6	G6105154000	SWITCH COVER FULCRUM SHAFT				1
7	G6504154000	RACH				10
8	SM0040801SE	TRUSS HEAD SCREW				10
9	G50871540A0A	CONTROL BOX COVER ASM.				1
10	G6108154000	CORD FITTING PLATE				1
11	SL4030641SE	SCREW				8
12	HX002770000	ROD				4
13	G6252154000	POWER CIRCUIT BOARD				1
14	G6152154000	DIP SWITCH CYRCUIT BOARD				1
15	G6245154000	CIRCUIT BOARD				1
16	G6503154000	TERMINAL				1
17	G6159154000	MAIN SWITCH CORD	FOR 3-PHASE			1
18	G6115154000	MOTOR POWER SOURCE CORD	FOR 3-PHASE			1
19	G6509154000	TRANS				1
20	G6505154000	FUSE HOLDER				1
21	E9610601000	FUSE 3A				2
22	E9602701000	FUSE 4A				1
23	G6160154000	MAIN SWITCH CORD	FOR 1-PHASE			1
24	G6124154000	MOTOR POWER SOURCE CORD	FOR 1-PHASE			1
25	GAI20032000	CAUTION LABEL				1
26	CM300100001	LABEL				1

# OPERATION BOX PANEL COMPONENTS



OPERATION BOX PANEL COMPONENTS

No.	Parts No.	Parts name	Remarks	Level	Cons	Qty
1	G6100154000	SWITCH PANEL				1
2	HG00461000A	LED GREEN				1
3	HB000610000	COUNTER				1
4	G6508154000	SWITCH				1
5	HG004610000	LED RED				3
6	G6506154000	SWITCH				3
7	G6507154000	SWITCH INSTALLING PLATE				2
8	SL4040655SC	SCREW				4
9	G6517154000	SWITCH(BULE)				1
10	G6521154000	CAP(BULE)				1
11	G6518154000	PUSH BUTTON SW,(YELLOW)				1
12	G6522154000	CAP(YELLOW)				1
13	G6519154000	PUSH BUTTON SW,(GREEN)				1
14	G6523154000	CAP(GREEN)				1
15	G6520154000	PUSH BUTTON SW,(WHITE)				1
16	G6524154000	CAP(WHITE)				1
17	G6099154000A	SWITCH BOX				1
18	G6515154000	SCREW				2
19	NM6080001SE	NUT M8				2
20	G5514116000	WASHER D=30				2

TABLE POWER SWITCH COMPONENTS

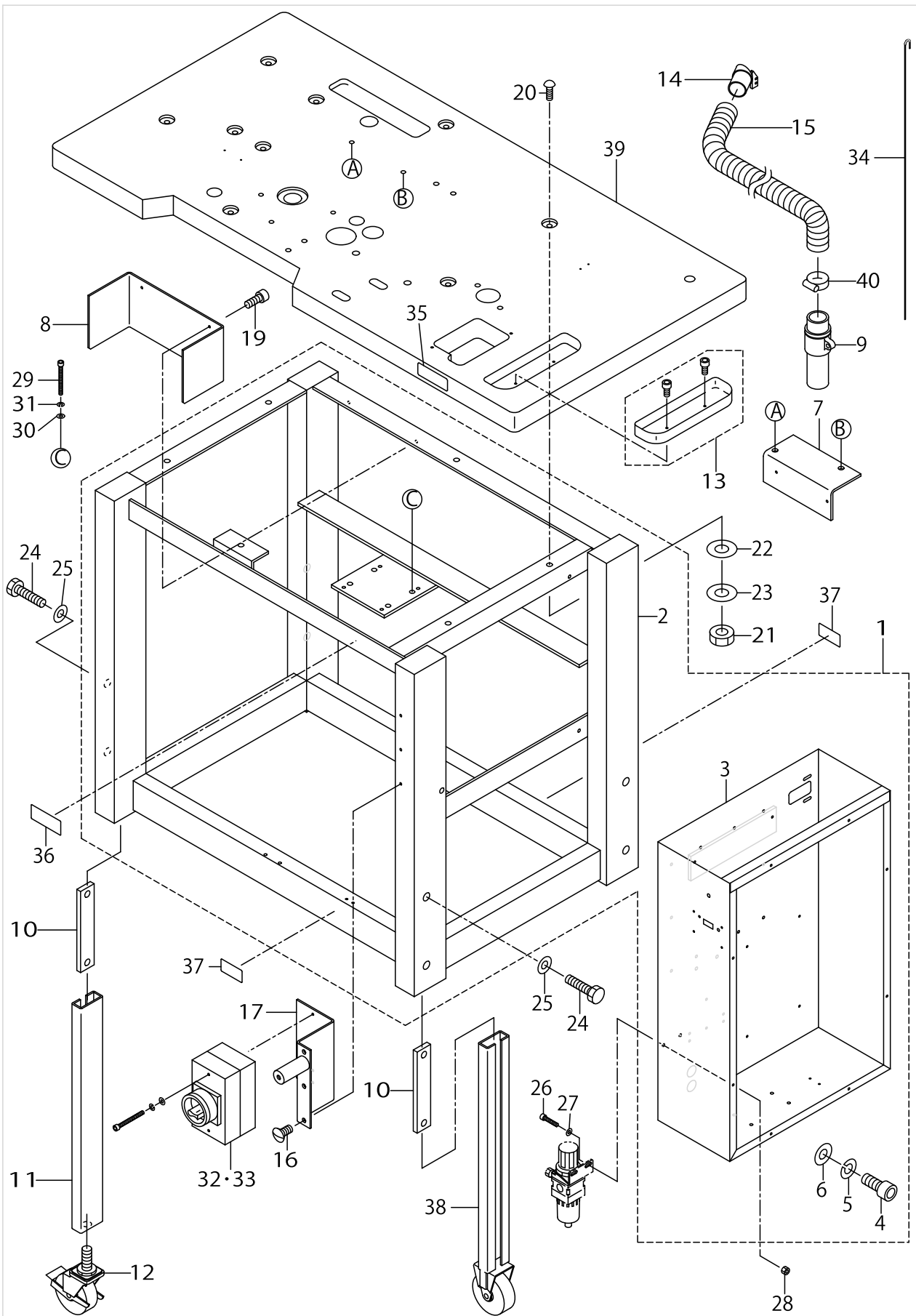
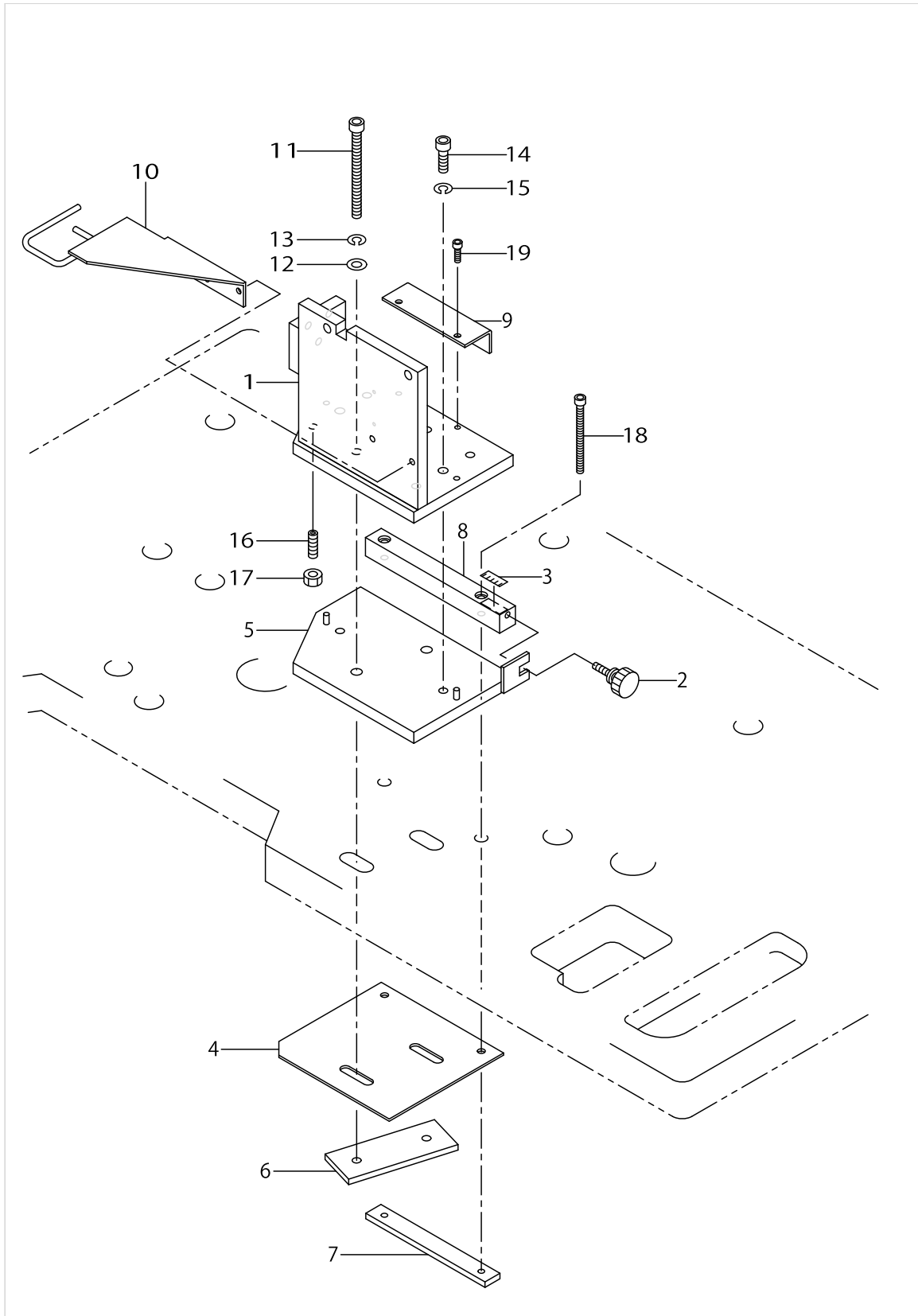


TABLE POWER SWITCH COMPONENTS

No.	Parts No.	Parts name	Remarks	Level	Cons	Qty
1	G50811540A0	STAND ASM.				1
2	G5081154000A	ADJUSTING STAND		*		1
3	G5082154000	ADJUSTING STAND 2-2		*		1
4	SM6061402TN	BOLT		*		4
5	WS0610002KN	SPRING WASHER 6.1X12.2X1.5		*		4
6	WP0641600SC	WASHEW 6.4X12.5X1.6		*		4
7	G5085154000	MAGNETIC VALVE FITTING PLATE.				1
8	G5084154000	BELT COVER				1
9	G5404154000	VACUUM CAN				1
10	G5459100000	NUT				4
11	G5455103000	CASTER STAND				2
12	G54571000AD	STAND ASM.				2
13	11156056	SMALL CASTINGS CASE ASM.				1
14	G5048154000	VACCUM NOUTH PIESE				1
15	G5049154000	VACCUM HOSE				1
16	SS2110920TP	SCREW 11/64-40 L=8.5				3
17	G5097154000	MOTOR INSTALLING PLATE				1
18	SM6082002TN	SCREW M8 L=20				1
19	SM6041002TN	BOLT				2
20	D8211555D00	BOLT				6
21	NM6080001SC	NUT M8X1.25				6
22	WP0851846SC	WASHER 8.5X22.0X1.8				6
23	WS0820002KN	SPRING WASHER M8				6
24	SM9122003SC	BOLT M12 L=20				8
25	WP1252210SC	WASHER 12.5X25.6X2.2				8
26	SM6051002TP	SCREW M5X0.8 L=10				2
27	WP0501016SD	WASHER 5X10.5X1				2
28	NM6050002SE	NUT M5				2
29	SM6052002TP	SCREW M5 L=20				4
30	WP0551016SH	WASHER 5.5X13X1				4
31	WS0510002KP	SPRING WASHER 5.1X9.2X1.3				4
32	G6513154000	POWER SWITCH				1
33	G6514154000	POWER SWITCH (JE)	FOR JE			1
34	G5050154000	VACUUM HOSE SUPPORT				1
35	CM500100001	CE MARKING LABEL	FOR JE			1
36	CM500000001	POWER SOURCE INDICATION LABEL				1
37	16870206	GRAVITY SEAL				2
38	G5083154000	CASTER				2
39	G5080154000	TABLE				1
40	G5406154000	HOSE BAND				2



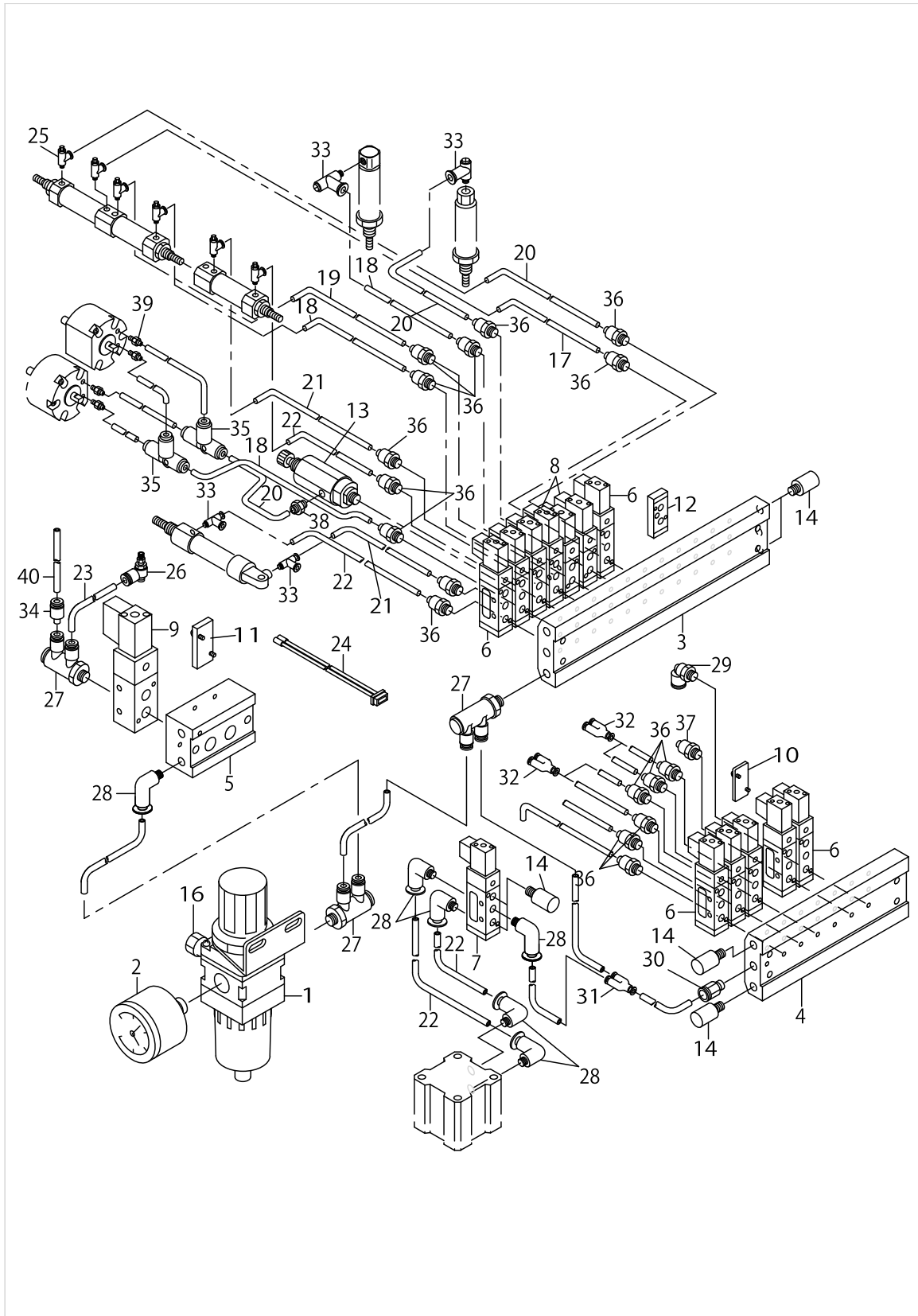
# SUPPLY DEVICE BASE COMPONENTS



SUPPLY DEVICE BASE COMPONENTS

No.	Parts No.	Parts name	Remarks	Level	Cons	Qty
1	G5052154000	DEVICE BASE				1
2	G5053154000	SCREW				1
3	G5054154000	SCALE				1
4	G5055154000	DEVICE PLATE				1
5	G5681103000	BASE PLATE				1
6	G5682103000	NUT PLATE				1
7	G5683103000	NUT PLATE				1
8	G5684103000	RAIL				1
9	G5685103000	GUIDE PLATE				1
10	G5183154000	GUARD				1
11	SM6089502TP	SCREW M8 L=95				2
12	WP0841601SC	WASHER 8.4X17.4X1.6				2
13	WS0820002KP	SPRING WASHER				2
14	SM6082502TP	SCREW M8 L=25				2
15	WS0820002KP	SPRING WASHER				2
16	SM8082502TP	SCREW				4
17	NM6080001SC	NUT M8X1.25				4
18	SM6067552TP	HEXAGONAL-HOLE BOLT M6 L=75				2
19	SM6051602TP	SCREW M5X0.8 L=16				2

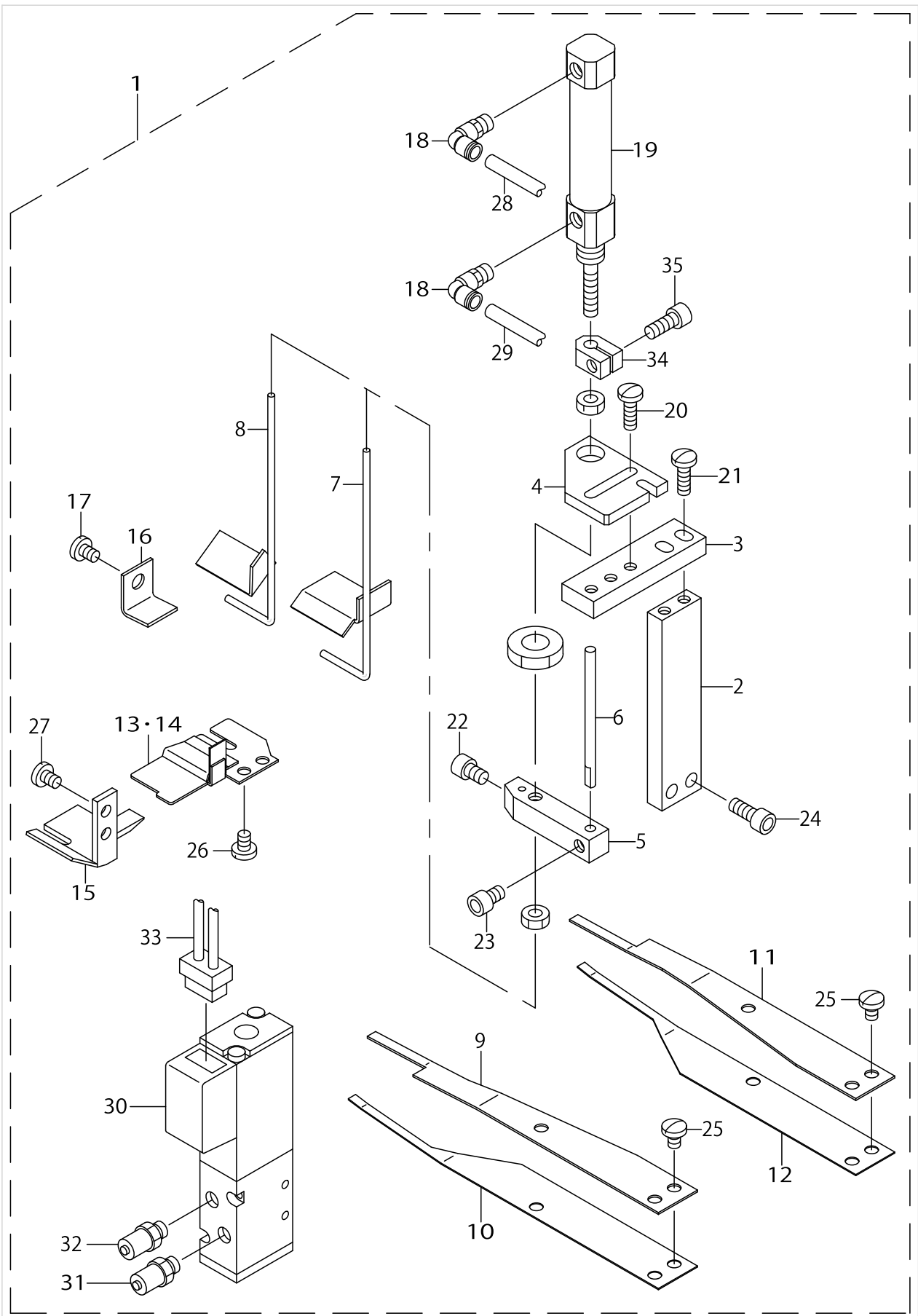
# PNEUMATIC COMPONENTS



PNEUMATIC COMPONENTS

No.	Parts No.	Parts name	Remarks	Level	Cons	Qty
1	PF0151010A0	FILTER SOLENOID VALVE				1
2	PF065108000	PRESSURE GAUGE SWITCH				1
3	PV035140000	MANIFOLD				1
4	PV035142000	MANIFOLD				1
5	PV035143000	MANIFOLD				1
6	PV150527000	SOLENOID VALVE				10
7	PV155111000	SOLENOID VALVE				1
8	PV130531100	SOLENOID VALVE				2
9	PV135124000	SOLENOID VALVE				1
10	PV9030070A0	BLANKING PLATE				6
11	PV9030060A0	BLANKING PLATE				1
12	PV903001000	ADAPTER PLATE				2
13	G5280103000	DECREASING PRESSURE VALVE				1
14	PX055104000	SILENCER (PT1/8)				6
15	PJ301065103	HALF UNION 6XPT1/8				1
16	PJ309005101	SOCKET				1
17	BT0400301AE	NYLON-TUBE, RED				1.92
18	BT0400301AA	NYLON-TUBE, BLUE				3.89
19	BT0400301AC	NYLON-TUBE, YELLOW				1.89
20	BT0400301AD	NYLON-TUBE, GREEN				4.03
21	BT0400301AF	NYLON-TUBE, WHITE				1.62
22	BT0400301AB	NYLON-TUBE, BLACK				1.74
23	BT0600401CB	SOFT NYLON-TUBE, BLACK				3.66
24	G63021540A0	SOLENOID VALVE CORD ASM.				14
25	PC010507000	SPEED CONTROLLER				6
26	PV015116000	SLOT VALVE				1
27	PJ309065102	DOUBLE ELBOW				3
28	PJ304065101	ELBOW UNION 6XPT1/8				6
29	PJ304040505	ELBOW				1
30	PJ301065103	HALF UNION 6XPT1/8				1
31	PJ308060003	Y UNION				1
32	PJ308040002	QUICK COUPLING				4
33	PJ304040513	ELBOW UNION				2
34	PJ301040001	REDUCER				1
35	PJ305040001	TEE UNION				2
36	PJ032052503	HOSE NIPPLE				17
37	PJ032059008	NIPPLE				1
38	PJ030050002	NIPPLE				1
39	PJ032059006	BARB JOINT				4
40	BT0400251EF	VINYL TUBE				1.07

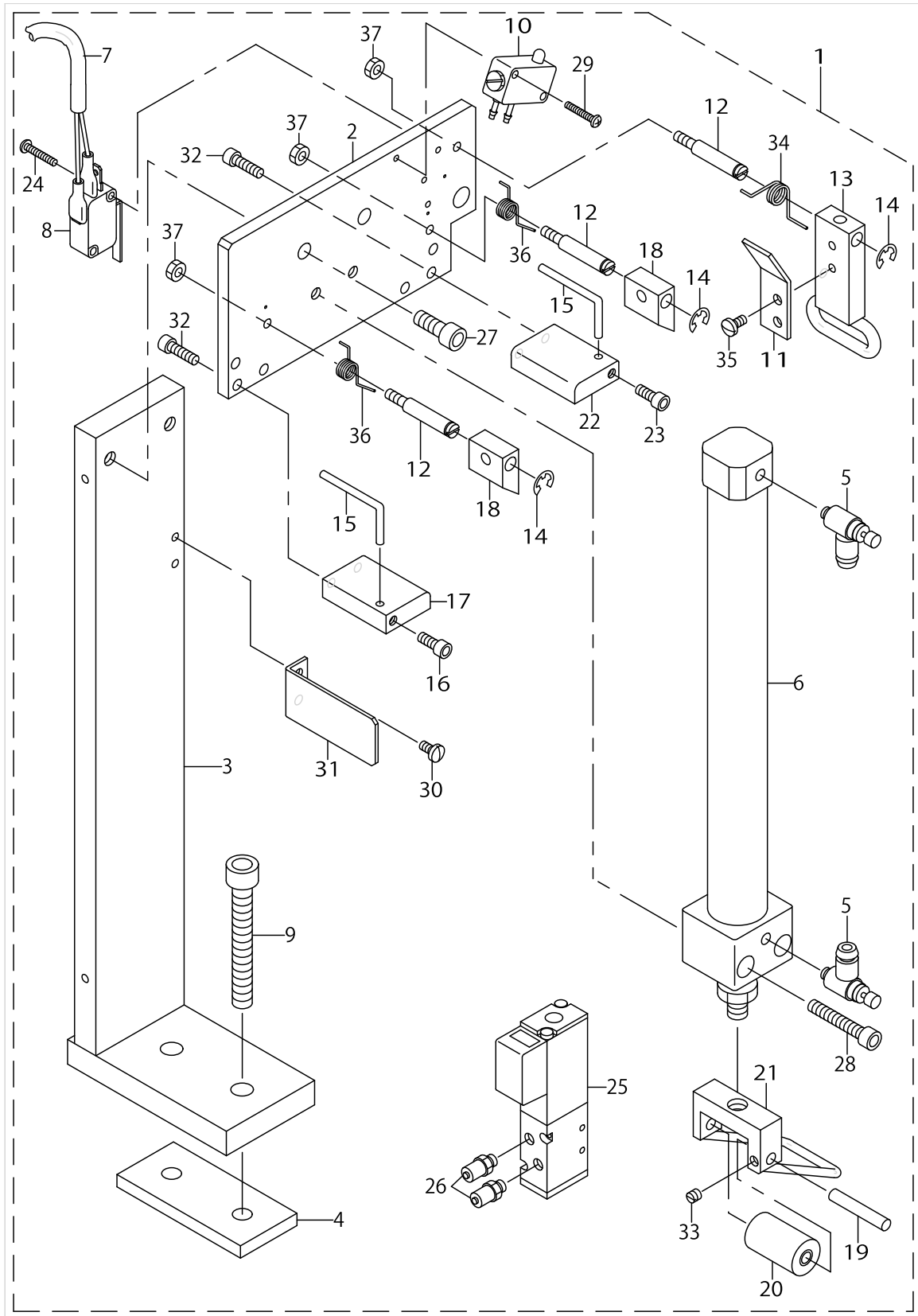
BELT RELEASE DEVICE COMPONENTS(OPTION)



BELT RELEASE DEVICE COMPONENTS(OPTION)

No.	Parts No.	Parts name	Remarks	Level	Cons	Qty
1	G52011540A0	BELT LOOSEN DEVICE ASM.				1
2	G5201154000	LOOP LOOSEN FITTING PLATE		*		1
3	G5202154000	LOOP LOOSEN CONNECTING PLATE		*		1
4	G5203154000	CYLINDER FITTING PLATE		*		1
5	G5204154000	LOOP LOOSEN BAR BRACKET		*		1
6	G5206154000	LOOP LOOSEN GUIDE BAR		*		1
7	G5303154000	LOOP LOOSEN BAR(63-78MM)		*		1
8	G5302154000	LOOP LOOSEN BAR(55-62MM)	ACCESSORIES PART	*		1
9	G5209154000	SUPPORTING SPRING, UPPER		*		1
10	G5210154000	SUPPORTING SPRING, SIDE		*		1
11	G5211154000	SUPPORTING SPRING, BACK UPPER		*		1
12	G5212154000	SUPPORTING SPRING, BACK SIDE		*		1
13	G5214154000	BACK HOLDING PLATE (48-65MM)	FOR 48~65MM (1-7/8"~2-9/16")	*		1
14	G5215154000	BACK HOLDING PLATE (60-78MM)	FOR 60~78MM (2-23/64"~3-5/64")	*		1
15	G5216154000	LOOP FRONT HOLDING PLATE		*		1
16	G5213154000	FRONT UPPER GUIDE		*		1
17	SS7090510SP	SCREW 9/64-40 L= 4.6		*		1
18	PJ304040513	ELBOW UNION		*		2
19	PA1002002A0	SUPER MINI-CYLINDER		*		1
20	SS7091110SP	SCREW 9/64-40 L=10.5		*		2
21	SS7091110SP	SCREW 9/64-40 L=10.5		*		2
22	SM6040602TN	BOLT		*		1
23	SM6040602TN	BOLT		*		1
24	SM6041002TN	BOLT		*		2
25	SS7090510SP	SCREW 9/64-40 L= 4.6		*		4
26	SS7090510SP	SCREW 9/64-40 L= 4.6		*		2
27	SS7090710SN	SCREW 9/64-40 L=6.8		*		2
28	BT0400301AE	NYLON-TUBE, RED		*		1
29	BT0400301AC	NYLON-TUBE, YELLOW		*		1
30	PV150527000	SOLENOID VALVE		*		1
31	PJ032052503	HOSE NIPPLE		*		1
32	PJ032052503	HOSE NIPPLE		*		1
33	G63021540A0	SOLENOID VALVE CORD ASM.		*		1
34	G5023154000	COLLAR		*		1
35	SM6041002TN	BOLT		*		1

BELT SEND OUT DEVICE COMPONENTS(OPTION)

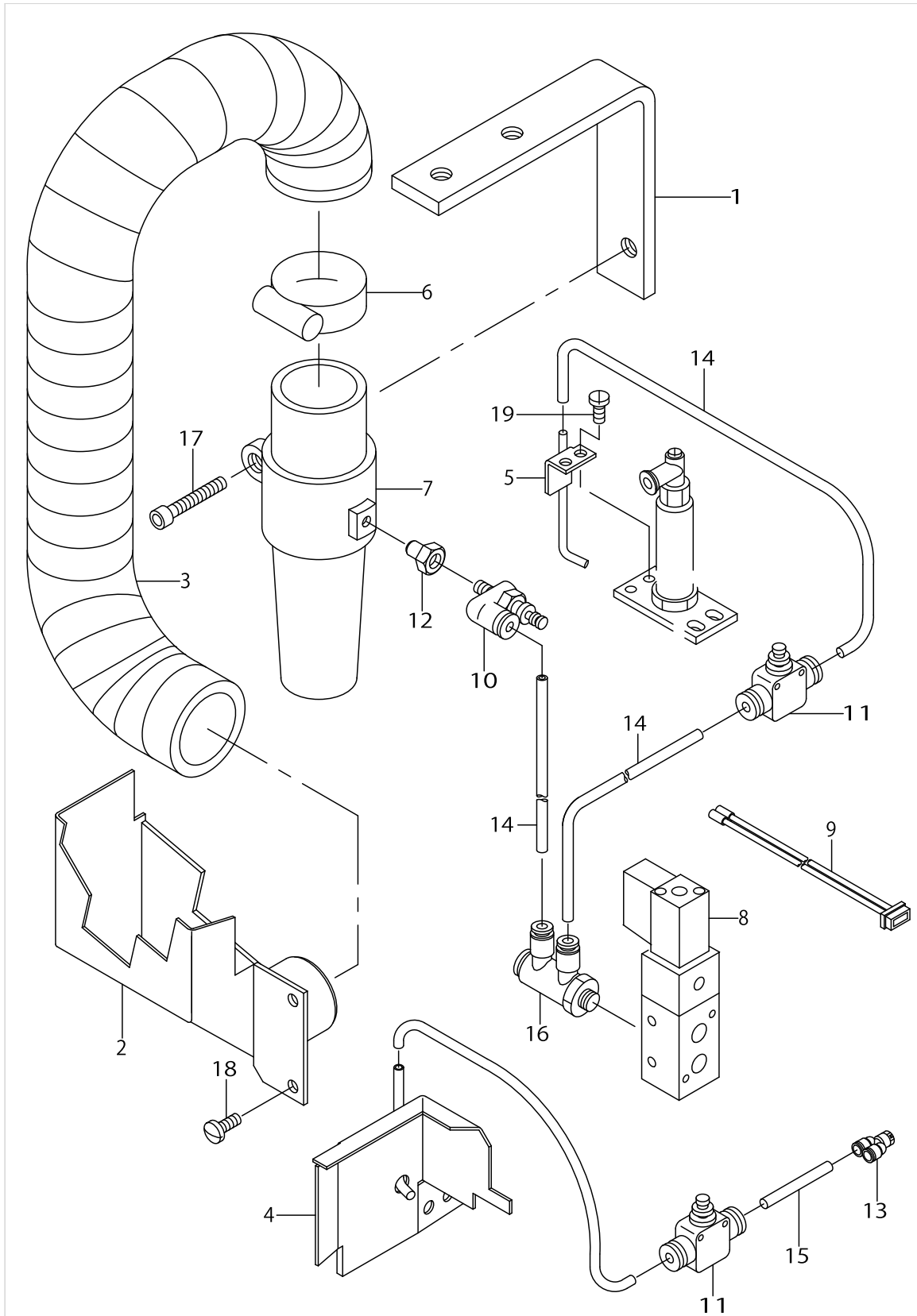


BELT SEND OUT DEVICE COMPONENTS(OPTION)

No.	Parts No.	Parts name	Remarks	Level	Cons	Qty
1	G51921540A0	BELT SEND OUT DEVICE ASM.				1
2	G5192154000	LOOP DRAWER DEVICE BASE		*		1
3	G5197154000	LOOP DRAWER DEVICE STAND		*		1
4	G5198154000	BASE PLATE		*		1
5	PC010508000	SPEED CONTROLLER		*		2
6	PA2017501A0	CYLINDER		*		1
7	G6194154000	DETECTOR SW-CORD		*		1
8	G6526154000	LOOP DETECTOR SW		*		1
9	SM6086002TP	SCREW		*		2
10	PV010009000	MECHANICAL VALVE		*		1
11	G5200154000	VALVE APPLY METAL		*		1
12	G5196154000	LOOP FASTEN PIN		*		3
13	G5193154000	GUIDE METAL FITTING		*		1
14	RE0500000K0	E-RING		*		3
15	G5189154000	LOOP GUIDE METAL		*		2
16	SM6041002TN	BOLT		*		1
17	G5187154000	LOOP FRONT HOLDING PLATE		*		1
18	G5190154000	LOOP FASTEN PIC		*		2
19	G5186154000	ROLLER SHAFT		*		1
20	G5185154000	LOOP DRAWER ROLLER, FRONT		*		1
21	G5184154000	CYLINDER METAL FITTINGS		*		1
22	G5188154000	LOOP BACK HOLDING		*		1
23	SM6041002TN	BOLT		*		1
24	SM4861601SC	SCREW M2.6 L=16		*		2
25	PV150527000	SOLENOID VALVE		*		1
26	PJ032052503	HOSE NIPPLE		*		2
27	SM6061602TN	SCREW M6 L=16		*		2
28	SM6053002TN	SCREW M5X0.8 L=30		*		2
29	SM4861601SC	SCREW M2.6 L=16		*		2
30	SS7090710SN	SCREW 9/64-40 L=6.8		*		2
31	G5199154000	LOOP DRAWER GUIDE		*		1
32	SM6041402TN	SCREW M4X0.7 L=14		*		4
33	SS8110410TP	SCREW 11/64-40 L= 3.5		*		1
34	G5195154000	GUIDE PLATE SPRING		*		1
35	SS7090710SN	SCREW 9/64-40 L=6.8		*		2
36	G5191154000	LOOP FASTEN PIC SPRING		*		2
37	NM6040001SD	NUT M4		*		3



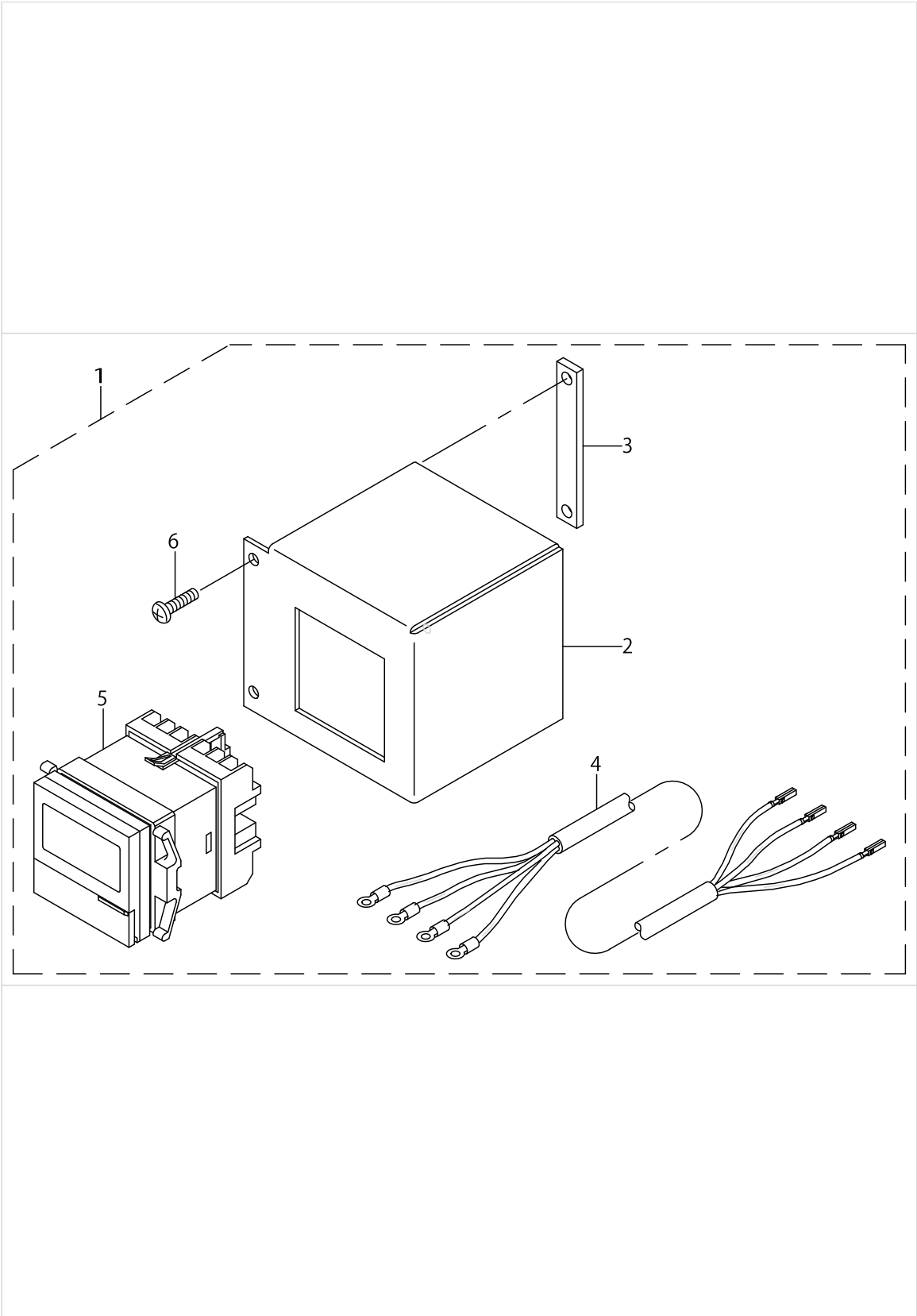
CHIP VACUUM DEVICE COMPONENTS(OPTION)



CHIP VACUUM DEVICE COMPONENTS(OPTION)

No.	Parts No.	Parts name	Remarks	Level	Cons	Qty
1	G5218154000	CHIP VACUUM INSTALLING PLATE				1
2	G5220154000	CHIP VACUUM BOX				1
3	G5221154000	CHIP VACUUM HOSE				1
4	G5222154000	CHIP VACUUM LEFT COVER				1
5	G5223154000	CHIP AIR NOZZLE				1
6	G5406154000	HOSE BAND				1
7	G5404154000	VACUUM CAN				1
8	PV135124000	SOLENOID VALVE				1
9	G63021540A0	SOLENOID VALVE CORD ASM.				1
10	PV010512000	SLOT VALVE				1
11	PJ303040003	UNION STRAIGHT				2
12	PJ015105001	BUSHING				1
13	PJ308040002	QUICK COUPLING				1
14	BT0400251EB	URETHANE HOSE, BLACK				1.38
15	BT0400251EF	VINYL TUBE				0.37
16	PJ309045101	ELBOW				1
17	SM6082002TN	SCREW M8 L=20				1
18	SS7111120SP	SCREW 11/64-40 L=10.5				2
19	SS7090710SP	SCREW 9/64-40 L= 6.8				2

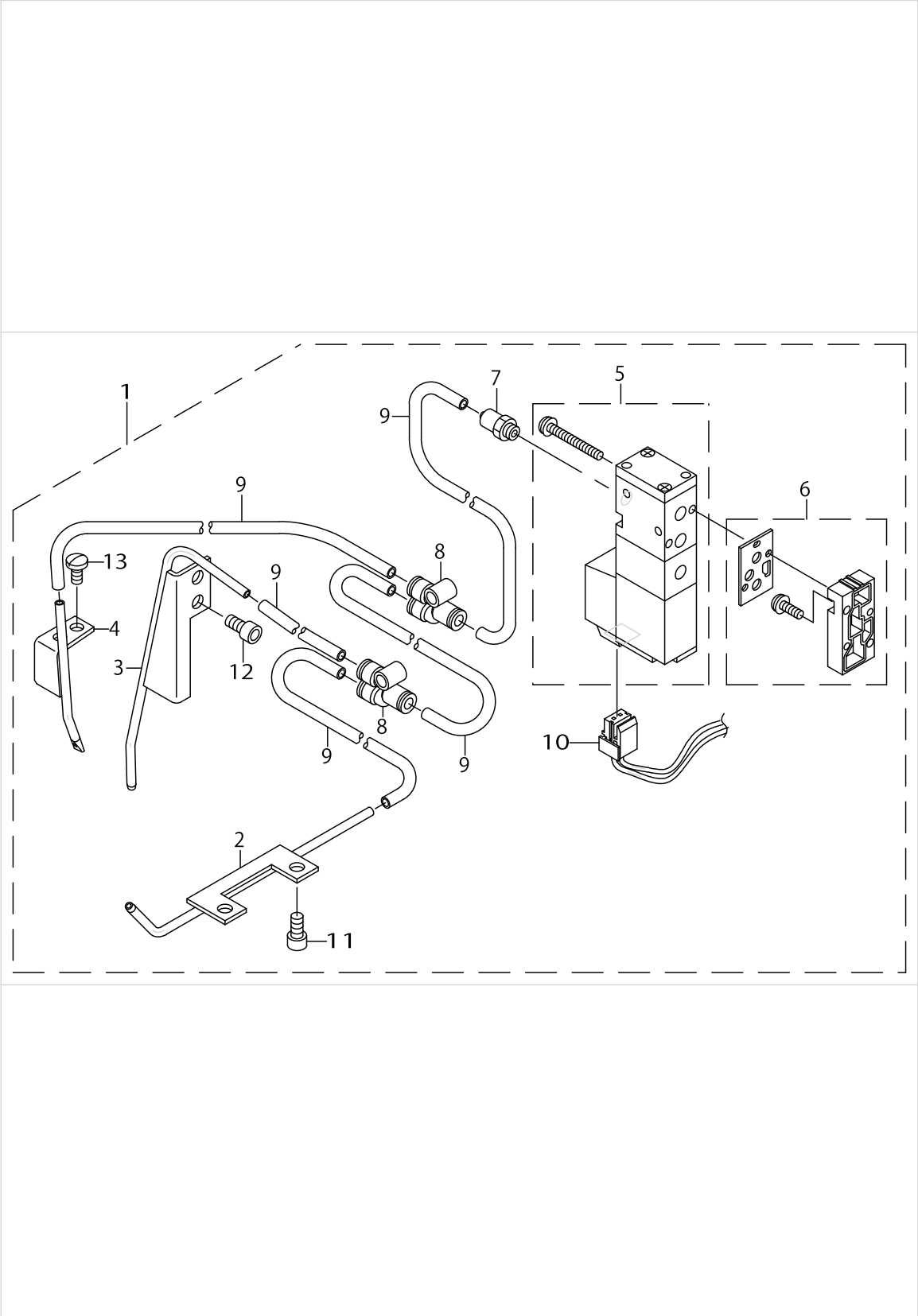
LOWER THREAD COUNTER DEVICE COMPONENTS(OPTION)



LOWER THREAD COUNTER DEVICE COMPONENTS(OPTION)

No.	Parts No.	Parts name	Remarks	Level	Cons	Qty
1	G52341540A0	LOWER THREAD COUNTER ASM.				1
2	G5237154000	COUNTER BOX		*		1
3	G5238154000	COUNTER BOX INSTALLING PLATE		*		1
4	G6239154000	LOWER THREAD COUNTER CORD		*		1
5	HB000610000	COUNTER		*		1
6	SM4041601SR	SCREW M4 L=16		*		2

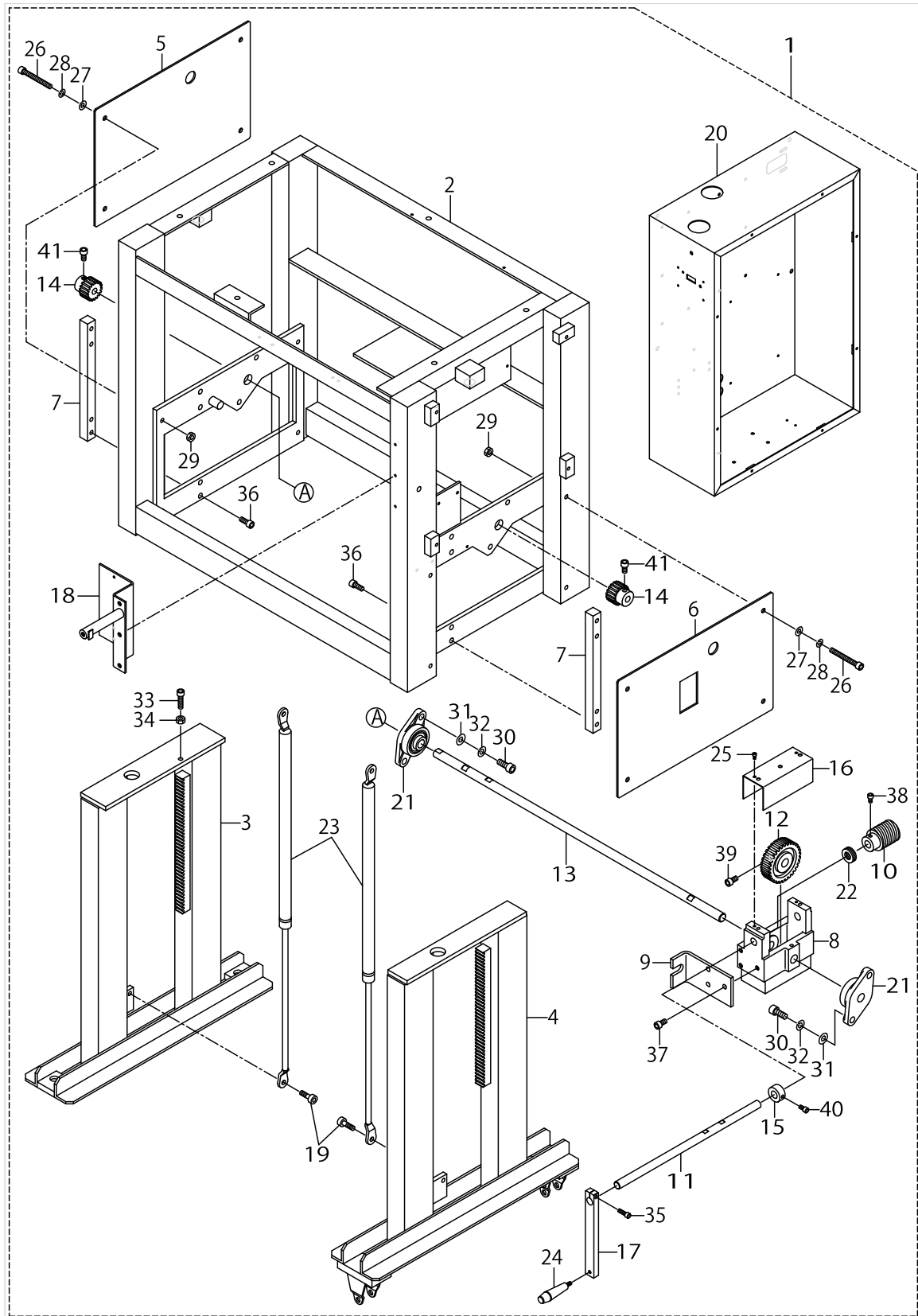
TRANSFORMATION LOOP GUIDE DEVICE COMPONENTS(OPTION)



TRANSFORMATION LOOP GUIDE DEVICE COMPONENTS(OPTION)

No.	Parts No.	Parts name	Remarks	Level	Cons	Qty
1	G52291540A0	TRANSFORMED LOOPER GUIDE ASM.				1
2	G5229154000	LOOP GUIDE LOWER NOZZLE		*		1
3	G5230154000	LOOP GUIDE UPPER NOZZLE		*		1
4	G5231154000	LOOP GUIDE FRONT NOZZLE		*		1
5	PV130531000	SOLENOID VALVE		*		1
6	PV903001000	ADAPTER PLATE		*		1
7	PJ032052503	HOSE NIPPLE		*		1
8	PJ308040002	QUICK COUPLING		*		2
9	BT0400301AA	NYLON-TUBE, BLUE		*		2.26
10	G63031540A0	SOLENOID VALVE CONNECTOR ASM.		*		1
11	SM6040802TN	SCREW		*		2
12	SM6040802TN	SCREW		*		2
13	SS7090710SL	SCREW 9/64-40 L=6.8		*		2

LIFTING STAND COMPONENTS(OPTION)



LIFTING STAND COMPONENTS(OPTION)

No.	Parts No.	Parts name	Remarks	Level	Cons	Qty
1	G53201540A0	LIFTING STAND ASM.				1
2	G5320154000	LIFTING STAND		*		1
3	G5321154000	STAND,LEFT		*		1
4	G5322154000	STAND,RIGHT		*		1
5	G5323154000	GUIDE PLATE,LEFT		*		1
6	G5324154000	GUIDE PLATE,RIGHT		*		1
7	G5326154000	STAND LIFTING GUIDE		*		2
8	G5327154000	WORM GEAR BOX		*		1
9	G5328154000	WORM GEAR BOX SUPPORT		*		1
10	G5329154000	WORM		*		1
11	G5330154000	WORM SHAFT		*		1
12	G5331154000	WORM WHEEL		*		1
13	G5332154000	WORM WHEEL SHAFT		*		1
14	G5333154000	PINION		*		2
15	G5334154000	WORM SHAFT COLLAR		*		1
16	G5335154000	WORM COVER		*		1
17	G5336154000	HANDLE		*		1
18	G5337154000	MOTOR STARTER BOX MOUNT BASE		*		1
19	G5338154000	GAS-SPRING PIN		*		2
20	G5343154000	CONTROL BOX		*		1
21	G5408154000	FLANGE UNIT		*		2
22	SB415000100	BEARING		*		1
23	G5409154000	GAS-SPRING		*		2
24	G5407154000	GRIP		*		1
25	SM6040802TN	SCREW		*		2
26	SM6087002TN	SCREW M8 L=70		*		8
27	WP0841601SC	WASHER 8.4X17.4X1.6		*		8
28	WS0820002KN	SPRING WASHER M8		*		8
29	NM6080001SC	NUT M8X1.25		*		8
30	SM6102512TP	SCREW M10X1.5 L=25.0		*		4
31	WP1052000SC	WASHER 10.5X18X2		*		4
32	WS1020002KN	SPRING WASHER M10		*		4
33	SM6083002TN	SCREW M8 L=30		*		1
34	NM6080001SC	NUT M8X1.25		*		1
35	SM6062002TN	SCREW M6 L=20		*		1
36	SM6082002TN	SCREW M8 L=20		*		8
37	SM6081542CP	SCREW M8X1.25 L=15		*		3
38	SM6061002TP	SCREW M6 L=10		*		2
39	SM6081552TP	SCREW M8 L=15		*		2
40	SM6061202TP	SCREW M6 L=12		*		2
41	SM6081552TP	SCREW M8 L=15		*		4



## HOW TO MAKE USE OF THIS PARTS LIST

1.As to "#01" and "#02" refer to the "Note" given at the bottom of the respective pages.

2.Codes on the "Qty" column

- Each numeral indicates the number of parts required.
- "0.1" and "2.5" indicate the length (in meters) of the respective parts.

3.Parentheses mean that the corresponding part is a subpart that constructs an assembly part.

4.Dotted lines on the Figures indicate assembly parts.

1. リストページの# 0 1、# 0 2の印は、ページ下の"注記"の説明を参照下さい。
2. 数量欄の数字は、個数を表し、0. 1、2. 5等の数値は、長さ（単位メートル）を表します。
3. 数量欄の（ ）は、組部品を構成している子部品であることを意味します。
4. イラストページの-----枠は、組構成であることを意味します。

# NUMERICAL INDEX OF PARTS

PART NO	PAGE	REF NO.	PART NO	PAGE	REF NO.	PART NO	PAGE	REF NO.
11156056	22	13	G5022154000	14	4	G5077154000	16	1
16870206	22	37	G5023154000	14	35	G5078154000	16	5
22450704	4	38	G5023154000	28	34	G5080154000	22	39
B2107816000	10	3	G5025154000	10	26	G5081154000A	22	2
BT0400251EB	32	14	G5026154000	10	35	G50811540A0	22	1
BT0400251EF	26	40	G5028154000	10	15	G5082154000	22	3
BT0400251EF	32	15	G5029154000	10	7	G5083154000	22	38
BT0400301AA	26	18	G5030154000	10	8	G5084154000	22	8
BT0400301AA	36	9	G5031154000	10	17	G5085154000	22	7
BT0400301AB	26	22	G5032154000	2	15	G50871540A0A	18	9
BT0400301AC	26	19	G5033154000	2	28	G5089100000	4	41
BT0400301AC	28	29	G5034154000	2	34	G5089100000	16	3
BT0400301AD	26	20	G5035154000	2	11	G5097154000	22	17
BT0400301AE	26	17	G5036154000	2	37	G5122100000	2	41·42
BT0400301AE	28	28	G5037154000	2	29	G512210000A	2	41·42
BT0400301AF	26	21	G5038154000	2	12	G5157122000	2	13
BT0600401CB	26	23	G5039154000	2	24	G515812200A	2	39·40
CM300100001	18	26	G5040154000	2	20	G515812200B	2	39·40
CM500000001	22	36	G5041154000	2	3	G5160100000	2	33
CM500100001	22	35	G5042154000	2	35	G5162103000	2	9
D8211555D00	22	20	G5048154000	22	14	G5165154000	6	23
E9602701000	18	22	G5049154000	22	15	G5166154000	6	22
E9610601000	18	21	G5050154000	22	34	G5167154000	6	46~48
G2431122000	10	12	G5051154000	2	6	G5168100000	2	23
G5001154000	10	32	G5052154000	24	1	G5168154000	6	46~48
G5002154000	10	28	G5053154000	24	2	G5169103000	2	22
G5003154000	10	19	G5054154000	24	3	G5169154000	8	46~48
G5004154000	12	72	G5055154000	24	4	G5170100000	2	25
G5005154000	10	34	G5056154000	4	4	G5183154000	24	10
G5006154000	12	49	G5057154000	4	36	G5184154000	30	21
G5007154000	12	64	G5058154000	4	37	G5185154000	30	20
G5008154000	12	62	G5060154000	4	1	G5186100000	4	26
G5009154000	10	22	G5061100000	16	17	G5186154000	30	19
G5010154000	12	56	G5061154000	4	6	G5187103000	6	10
G5011154000	12	57	G5062154000	4	2	G5187154000	30	17
G5012154000	12	51·73	G5063154000	4	39	G5188154000	30	22
G5013154000	10	6	G5064154000	4	12	G5189154000	30	15
G5015154000	10	39	G5065154000	4	28	G5190154000	30	18
G50151540A0	10	38	G5066154000	4	9	G5191154000	30	36
G5016154000	10	41	G5067154000	6	9	G5192154000	30	2
G5017154000	12	68	G5068154000	6	8	G51921540A0	30	1
G5020154000	10	44	G5069154000	6	4	G5193154000	30	13
G5020154000	14	36	G5070154000	6	2·3	G5195100000	4	25
G5020500000	12	69	G5071154000	6	2·3	G5195154000	30	34
G5021154000	14	32	G5072154000	6	28	G5196154000	30	12

# NUMERICAL INDEX OF PARTS

PART NO	PAGE	REF NO.	PART NO	PAGE	REF NO.	PART NO	PAGE	REF NO.
G5197154000	30	3	G5271103000	6	39	G54571000AD	22	12
G5198154000	30	4	G5272103000	6	38	G5459100000	22	10
G5199154000	30	31	G5273100000	6	18	G5502103000	14	20
G5200154000	30	11	G5274100000	6	36	G5503103000	14	21
G5201154000	28	2	G5275100000	6	19	G5504103000	14	22
G52011540A0	28	1	G5280100000	6	13	G5505103000	14	39
G5202154000	28	3	G5280103000	26	13	G5506103000	14	24
G5203154000	28	4	G5281100000	6	12	G5507103000	14	30
G5204100000	10	47	G5302154000	28	8	G5511103000	14	25
G5204154000	28	5	G5303154000	28	7	G5512103000	14	33
G5206154000	28	6	G5307154000	2	44~46	G5513103000	14	26
G5209154000	28	9	G5308154000	2	44~46	G5514103000	14	27
G5210154000	28	10	G5309154000	2	44~46	G5514116000	20	20
G5211154000	28	11	G5320154000	38	2	G5515103000	14	37
G5212154000	28	12	G53201540A0	38	1	G5516103000	14	28
G5213154000	28	16	G5321154000	38	3	G5517103000	14	19
G5214154000	28	13-14	G5322154000	38	4	G5521103000	14	15
G5215154000	28	13-14	G5323154000	38	5	G5681103000	24	5
G5216154000	28	15	G5324154000	38	6	G5682103000	24	6
G5218154000	32	1	G5326154000	38	7	G5683103000	24	7
G5219200000	12	51-73	G5327154000	38	8	G5684103000	24	8
G5220154000	32	2	G5328154000	38	9	G5685103000	24	9
G5220200000	12	61	G5329154000	38	10	G5707100000	12	50
G5221154000	32	3	G5330154000	38	11	G5718100000	10	4
G5222154000	32	4	G5331154000	38	12	G5723100000	10	43
G5222200000	12	60	G5332154000	38	13	G5752103000	14	17
G5223154000	32	5	G5333154000	38	14	G5753103000	14	5
G5224100000	2	5	G5334154000	38	15	G5760103000	14	11
G5225154000	10	13	G5335154000	38	16	G5762103000	14	38
G5226154000	12	74	G5336154000	38	17	G6099154000A	20	17
G5227154000	12	75	G5337154000	38	18	G6100154000	20	1
G5229154000	36	2	G5338154000	38	19	G6104154000	18	4
G52291540A0	36	1	G5343154000	38	20	G6105154000	18	6
G5230154000	36	3	G5403154000	12	55	G6108154000	18	10
G5231154000	36	4	G5404154000	22	9	G6115154000	18	18-24
G5233100000	10	11	G5404154000	32	7	G6123154000	18	2
G52341540A0	34	1	G5406154000	22	40	G6124154000	18	18-24
G5235200000	10	9	G5406154000	32	6	G6152154000	18	14
G5237154000	34	2	G5407154000	38	24	G6159154000	18	17-23
G5238154000	34	3	G5408154000	38	21	G6160154000	18	17-23
G5251100000	6	24	G5409154000	38	23	G61901030A0	10	1
G5262103000	6	32	G5417103000	16	18	G6194154000	30	7
G5263103000	6	17	G5420100000	16	9	G6239154000	34	4
G5265103000	6	16	G5421100000	16	10	G6245154000	18	15
G5266103000	6	35	G5455103000	22	11	G6252154000	18	13

NUMERICAL INDEX OF PARTS

PART NO	PAGE	REF NO.	PART NO	PAGE	REF NO.	PART NO	PAGE	REF NO.
G63021540A0	26	24	NS6110350SP	16	13	PV010009000	30	10
G63021540A0	28	33	NS6150430SN	12	71	PV010512000	32	10
G63021540A0	32	9	PA1001525A0	2	1	PV015116000	26	26
G63031540A0	36	10	PA1002002A0	28	19	PV035140000	26	3
G6501154000	18	3	PA1002506A0	2	18	PV035142000	26	4
G6503154000	18	16	PA1003503A0	14	12	PV035143000	26	5
G6504154000	18	7	PA1602301A0	4	23	PV130531000	36	5
G6505154000	18	20	PA1610801A0	4	24	PV130531100	26	8
G6506154000	20	6	PA2017501A0	30	6	PV135124000	26	9
G6507154000	20	7	PA320110200	14	2	PV135124000	32	8
G6508154000	20	4	PC010507000	26	25	PV150527000	26	6
G6509154000	18	19	PC010508000	4	18	PV150527000	28	30
G6513154000	22	32-33	PC010508000	30	5	PV150527000	30	25
G6514154000	22	32-33	PF0151010A0	26	1	PV155111000	26	7
G6515154000	20	18	PF065108000	26	2	PV903001000	26	12
G6516154000	18	5	PJ015105001	32	12	PV903001000	36	6
G6517154000	20	9	PJ030050002	26	38	PV9030060A0	26	11
G6518154000	20	11	PJ032052503	26	36	PV9030070A0	26	10
G6519154000	20	13	PJ032052503	28	32	PX055104000	26	14
G6520154000	20	15	PJ032052503	30	26	RE0400000K0	6	37
G6521154000	20	10	PJ032052503	36	7	RE0400000K0	14	6
G6522154000	20	12	PJ032059006	6	33	RE0500000K0	4	27
G6523154000	20	14	PJ032059006	26	39	RE0500000K0	6	14
G6524154000	20	16	PJ032059008	26	37	RE0500000K0	30	14
G6526154000	30	8	PJ301040001	26	34	SB415000100	38	22
GAI20032000	18	25	PJ301065103	26	30	SL4030641SE	18	11-12
HA002660000	4	35	PJ303040003	32	11	SL4040655SC	20	8
HB000610000	20	3	PJ304040502	2	19	SM0040801SE	18	8
HB000610000	34	5	PJ304040502	14	13	SM0051001SC	16	8
HD000760000	10	18	PJ304040505	26	29	SM4041601SR	34	6
HG004610000	20	5	PJ304040513	26	33	SM4861601SC	16	4
HG00461000A	20	2	PJ304040513	28	18	SM4861601SC	30	29
HX000230000	12	67	PJ304065101	14	3	SM4862001SC	4	32
HX000230000	16	15	PJ304065101	26	28	SM6030502TP	6	43
HX001420000	18	1	PJ305040001	26	35	SM6030802TN	10	21
HX00150000D	4	29	PJ308040002	26	32	SM6040602TN	28	23
HX002770000	18	11-12	PJ308040002	32	13	SM6040802TN	10	63
NM6040001SD	12	54	PJ308040002	36	8	SM6040802TN	12	63
NM6040001SD	30	37	PJ308060003	26	31	SM6040802TN	36	12
NM6040003SC	10	24	PJ309005101	26	16	SM6040802TN	38	25
NM6050002SE	22	28	PJ309045101	32	16	SM6040802TP	6	30
NM6080001SC	22	21	PJ309065102	26	27	SM6041002TN	12	76
NM6080001SC	24	17	PS0160122KH	2	32	SM6041002TN	14	41
NM6080001SC	38	34	PS0300242K0	4	8	SM6041002TN	22	19
NM6080001SE	20	19	PS0500102KH	2	31	SM6041002TN	28	35

NUMERICAL INDEX OF PARTS

PART NO	PAGE	REF NO.	PART NO	PAGE	REF NO.	PART NO	PAGE	REF NO.
SM6041002TN	30	23	SS2110920TP	22	16	WP0501016SD	22	27
SM6041202TN	10	25	SS4080415SP	10	10	WP0551016SH	22	30
SM6041402TN	30	32	SS4080610SP	2	26	WP0641600SC	22	6
SM6042002TN	10	31	SS4080610SP	10	66	WP0641601SC	10	29
SM6043552TN	10	14	SS4080610SP	12	66	WP0641601SC	14	10
SM6051002SP	4	7	SS4080610SP	14	29	WP0841601SC	24	12
SM6051002TP	4	40	SS6060220SP	2	38	WP0841601SC	38	27
SM6051002TP	22	26	SS6060220SP	6	1	WP0851846SC	22	22
SM6051202SP	4	33	SS6080410SP	2	27	WP1052000SC	38	31
SM6051202TP	10	23	SS6080810SP	12	58	WP1252210SC	22	25
SM6051552SP	14	18	SS6080810SP	14	34	WS0510002KP	22	31
SM6051602TP	4	34	SS6111010SP	6	42	WS0610002KN	14	9
SM6051602TP	10	2	SS6111010SP	16	11	WS0610002KN	22	5
SM6051602TP	24	19	SS6111140SP	6	11	WS0820002KN	22	23
SM6052002TP	22	29	SS7090510SL	14	40	WS0820002KN	38	28
SM6052002TR	14	16	SS7090510SP	2	17	WS0820002KP	24	15
SM6052502SP	4	11	SS7090510SP	6	29	WS1020002KN	38	32
SM6053002TN	30	28	SS7090510SP	16	16			
SM6054002TN	14	1	SS7090510SP	28	26			
SM6061002TP	38	38	SS7090710SL	2	36			
SM6061202TP	38	40	SS7090710SL	6	40			
SM6061402TN	22	4	SS7090710SL	10	27			
SM6061602TN	30	27	SS7090710SL	36	13			
SM6062002TN	38	35	SS7090710SN	28	27			
SM6062002TR	14	8	SS7090710SN	30	35			
SM6062502TN	10	37	SS7090710SP	2	43			
SM6063002TP	10	30	SS7090710SP	4	30			
SM6064002TN	10	45	SS7090710SP	10	40			
SM6067552TP	24	18	SS7090710SP	14	31			
SM6081542CP	38	37	SS7090710SP	32	19			
SM6081552TP	38	41	SS7091110SP	28	21			
SM6082002TN	10	46	SS7111120SP	32	18			
SM6082002TN	22	18	SS7111410SP	2	10			
SM6082002TN	32	17	SS8110310SP	12	48			
SM6082002TN	38	36	SS8110410TP	30	33			
SM6082502TP	24	14	SS8150810SP	4	19			
SM6083002TN	38	33	SS8150810SP	6	15			
SM6086002TP	30	9	SS8150920SP	12	70			
SM6087002TN	38	26	SS9111010SP	6	20			
SM6089502TP	24	11	SS9111010SP	14	7			
SM6102512TP	38	30	SS9111510SP	6	44			
SM8082502TP	24	16	SS9111510SP	16	14			
SM9051003SE	4	31	WP0320500SC	10	20			
SM9122003SC	22	24	WP0450801SD	6	41			
SS2090710TP	14	23	WP0450801SD	10	42			