

MODEL : AMS-223C SUBCLASSES

List No : 1076-00

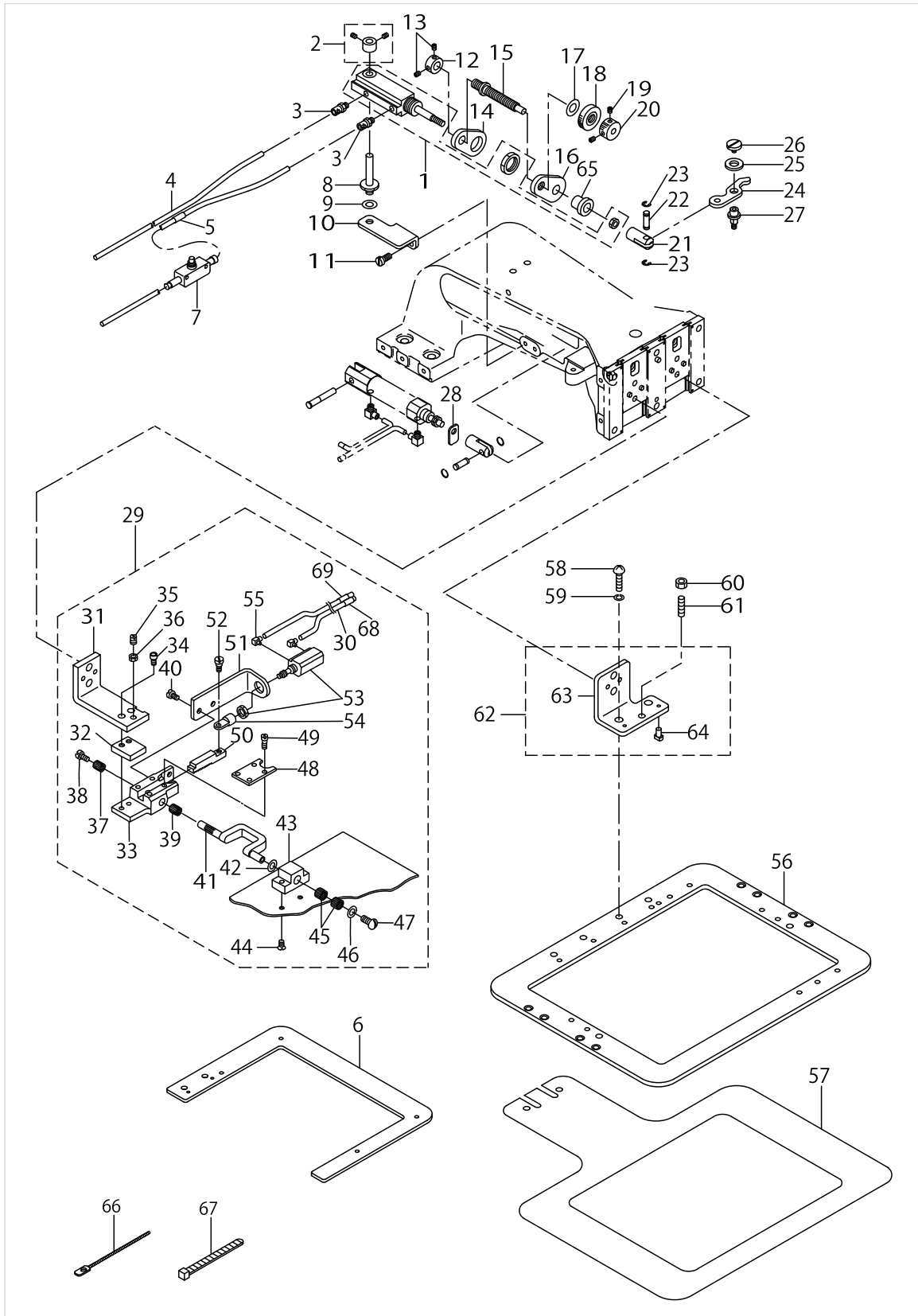
PARTS LIST

Published:09/10/2017

CONTENTS

CLOTH FEED MECHANISM COMPONENTS.....	1
NEEDLE BAR, PRESSER MECHANISM & ACCESSORIE PART COMPONENTS	5
PNEUMATIC COMPONENTS(FOR AMS-223CST,AMS-223CHT).....	7
PNEUMATIC COMPONENTS(FOR AMS-223CSL,AMS-223CHL & AMS-223CGL).....	9
PNEUMATIC COMPONENTS(FOR AMS-223CSB,AMS-223CHB & AMS-223CGB)	11
HOW TO MAKE USE OF THIS PARTS LIST	13

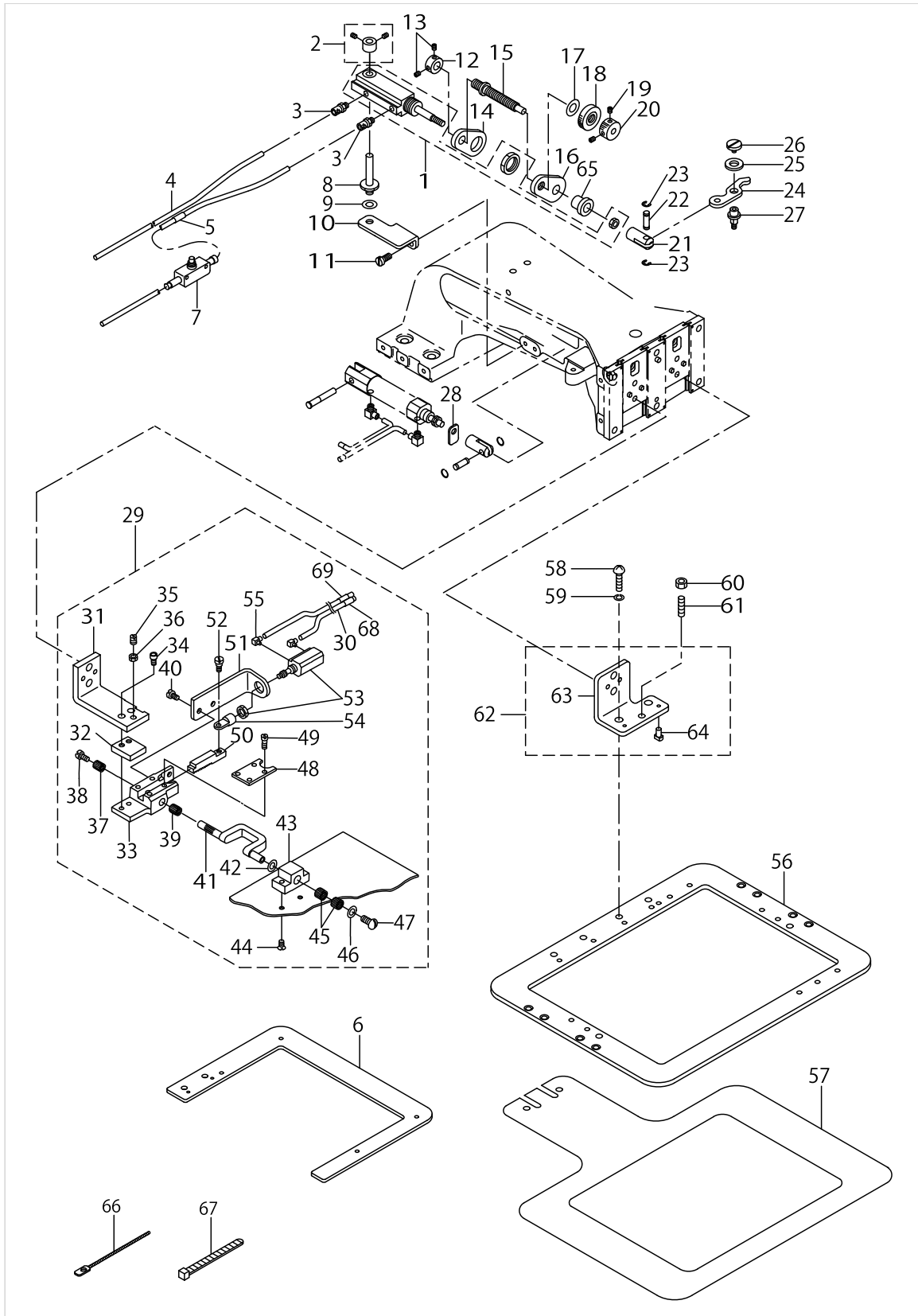
CLOTH FEED MECHANISM COMPONENTS



CLOTH FEED MECHANISM COMPONENTS

No.	Parts No.	Parts name	Remarks	Level	Cons	Qty
1	PA1602510A0	AIR CYLINDER				1
2	B25792290A0	THRUST BEARING				1
3	PJ032052503	HOSE NIPPLE				2
4	BT0400251EB	URETHANE HOSE, BLACK				9
5	B471122000E	AIR TUBE LABEL J05				1
6	B2606223C00	FRAME	FOR AMS-223C*L			2
7	PC012401000	SPEED CONTROLLER				1
8	B2528215000	SHAFT				1
9	WP0650876SD	WASHER 6.5X13X0.8				1
10	B2514215000	INSTALLING PLATE				1
11	SS6121010SP	SCREW 3/16-28 L=10				2
12	CS0790731SH	THRUST COLLAR				1
13	SS8110422TP	SCREW 11/64-40 L=4				2
14	B2518215000	BRACKET				1
15	B2527215000	REGULATION SCREW				1
16	B2518215A00	REGULATION PLATE				1
17	WP0820816SD	WASHER 8.2X16X0.8				1
18	B3012816000	NUT				1
19	SS8110422TP	SCREW 11/64-40 L=4				2
20	B2304205000	KNOB				1
21	B1625220000	CYLINDER KNUCKLE				1
22	B1626220000	CYLINDER PIN				1
23	RE0300000K0	E-RING 3				2
24	B2516215000	LEVER				1
25	B185351200E	HOOK SHAFT WASHER				1
26	SS6110520TP	SCREW 11/64-40 L=4.5				1
27	B3012490000	DRIVING LINK SHAFT				1
28	B2530215000	PRESSER PLATE				1
29	B4301223CA0	INNER PRESSER FOOT ASM.	FOR AMS-223C*T			1
30	BT0400251EB	URETHANE HOSE, BLACK	FOR AMS-223C*T			1.6
31	B4301223C00	INNER PRESSER FOOT	FOR AMS-223C*T	*		1
32	B4303220000	SPACER	FOR AMS-223C*T	*		1
33	B4302220000	BEARING	FOR AMS-223C*T	*		1
34	SS6151412TP	SCREW 15/64-28 L=14	FOR AMS-223C*T	*		2
35	SS8150912TH	SCREW 15/64-28 L=9	FOR AMS-223C*T	*		1
36	NS6150310SP	NUT 15/64-28	FOR AMS-223C*T	*		1
37	SB307000100	NEEDLE BEARING	FOR AMS-223C*T	*		1
38	SS6110640SP	SCREW 11/64-40 L=6	FOR AMS-223C*T	*		1
39	SB307000200	BEARING	FOR AMS-223C*T	*		1
40	SS7150940SP	SCREW 15/64-28 L=9	FOR AMS-223C*T	*		2
41	B4309220000	CRANK SHAFT	FOR AMS-223C*T	*		1
42	B4328220000	WASHER	FOR AMS-223C*T	*		2
43	B4320220000	SUPPORT BASE	FOR AMS-223C*T	*		1
44	SS1121010SP	SCREW	FOR AMS-223C*T	*		2
45	SB307000100	NEEDLE BEARING	FOR AMS-223C*T	*		2
46	B322877100B	BOBBIN WINDER SPACER	FOR AMS-223C*T	*		1
47	SS5110710SP	SCREW 11/64-40 L=7	FOR AMS-223C*T	*		1

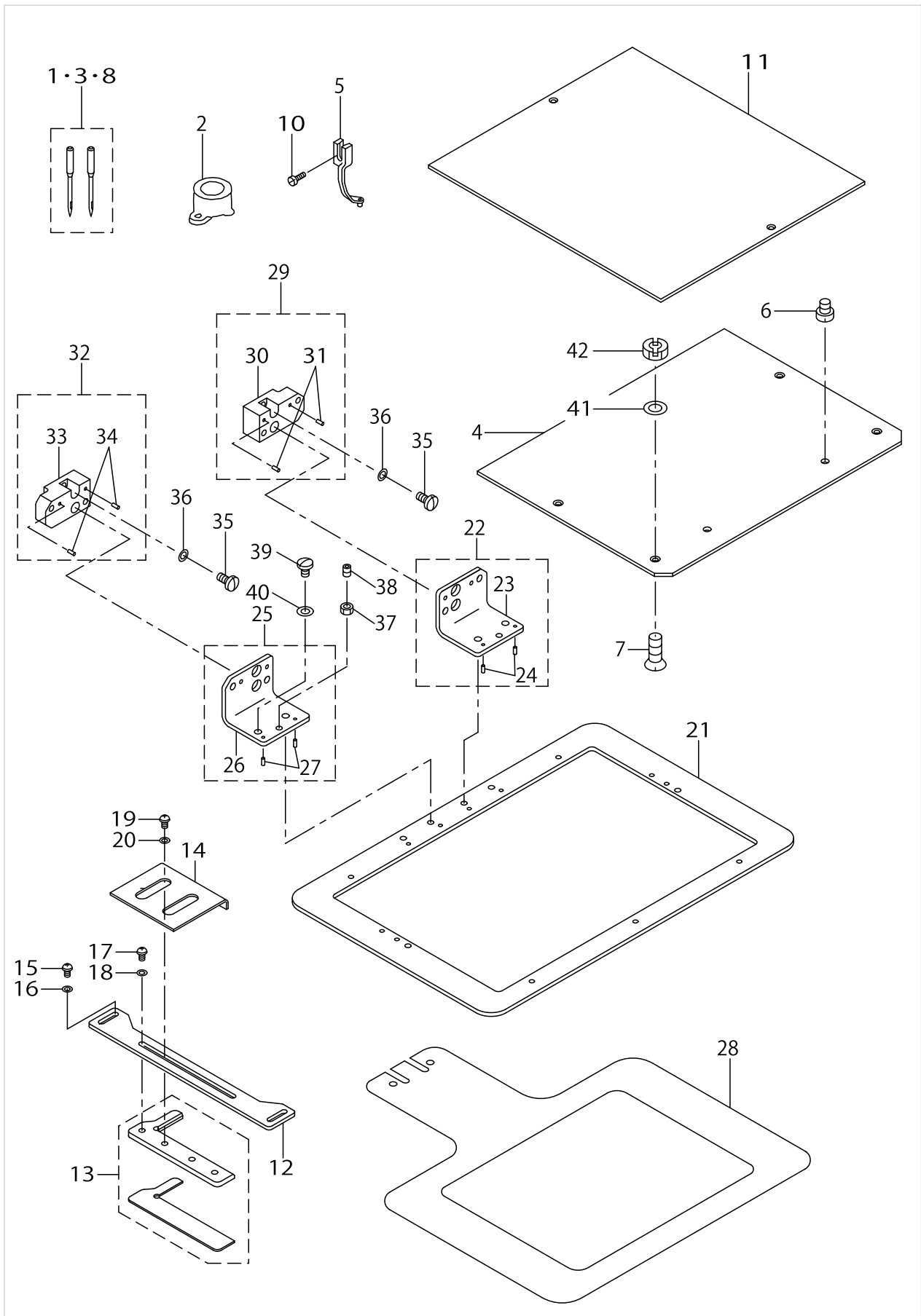
CLOTH FEED MECHANISM COMPONENTS



CLOTH FEED MECHANISM COMPONENTS

No.	Parts No.	Parts name	Remarks	Level	Cons	Qty
48	B4304220000	SUPPORT RACK	FOR AMS-223C*T	*		1
49	SS7090910TP	SCREW 9/64-40 L= 8.5	FOR AMS-223C*T	*		4
50	B4305220000	TURN RACK	FOR AMS-223C*T	*		1
51	B4307220000	BRACKET	FOR AMS-223C*T	*		1
52	SD0460703TP	HINGE SCREW D=4.6 H=7	FOR AMS-223C*T	*		1
53	B4327220000	CYLINDER	FOR AMS-223C*T	*		1
54	B4306220000	KNUCKLE	FOR AMS-223C*T	*		1
55	PJ046052503	HOSE ELBOW	FOR AMS-223C*T	*		2
56	B2553215A00	FRAME	FOR AMS-223C*T			1
57	B2558223C00	LOWER PLATE	FOR AMS-223C*T			1
58	SS7150910TP	SCREW	FOR AMS-223C*T			2
59	WP0651056SD	WASHER 6.5X11X1	FOR AMS-223C*T			2
60	NS6150330SD	NUT 15/64-28	FOR AMS-223C*T			1
61	SS8150822TP	SCREW 15/64-28 L=8	FOR AMS-223C*T			1
62	B2607223CA0	PRESSER FOOT ASM., RIGHT	FOR AMS-223C*T			1
63	B2607223C00	PRESSER FOOT, RIGHT	FOR AMS-223C*T	*		1
64	B1816280000	GUIDE PIN	FOR AMS-223C*T	*		2
65	B2548215000	BUSHING	FOR AMS-223C*T			1
66	HX000220000	BAND	FOR AMS-223C*T			1
67	HX002330000	CLIP	FOR AMS-223C*T			6
68	B4711220001	AIR TUBE LABEL J07	FOR AMS-223C*T			1
69	B471122000J	AIR TUBE LABEL J08	FOR AMS-223C*T			1

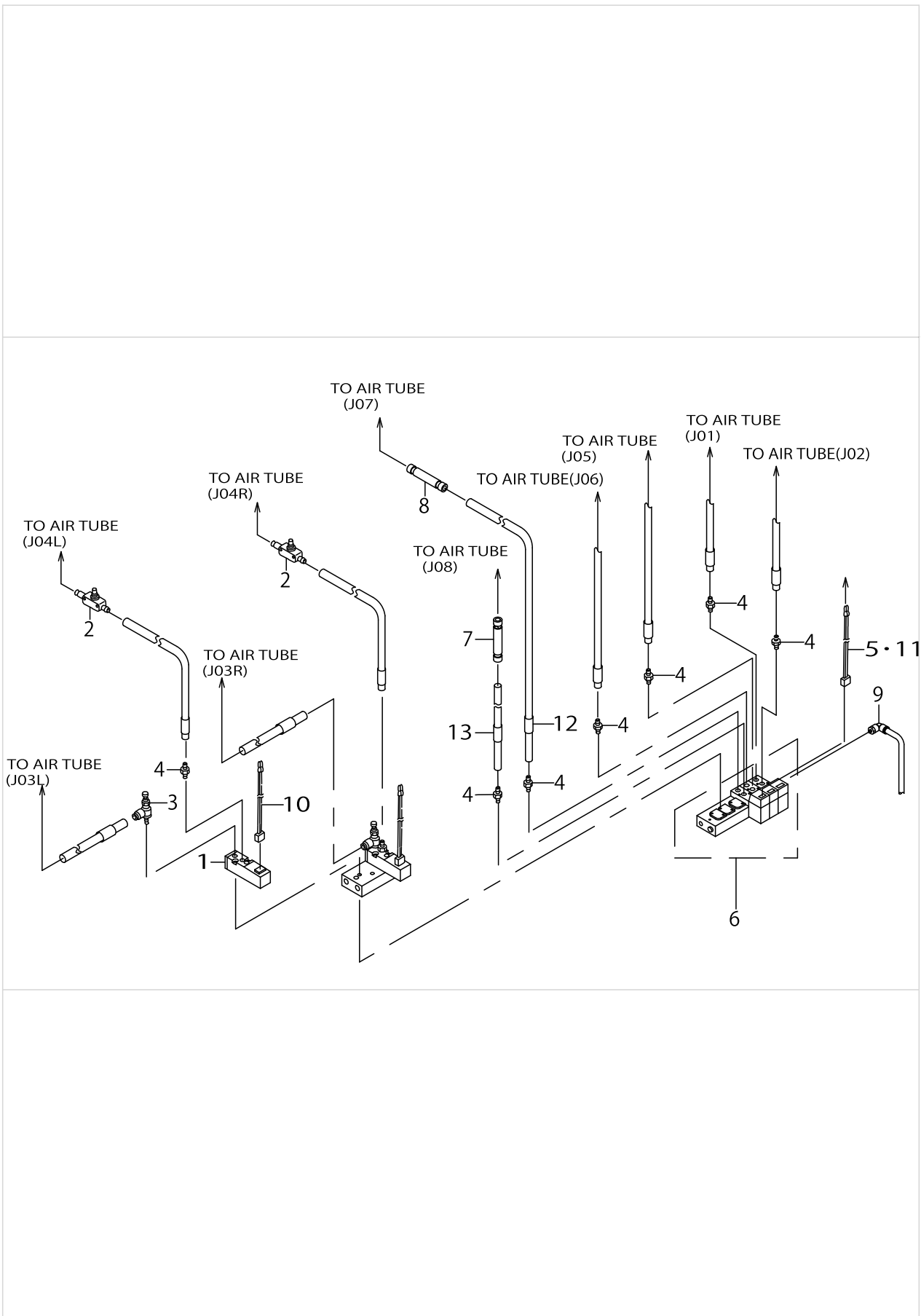
NEEDLE BAR, PRESSER MECHANISM & ACCESSORIE PART COMPONENTS



NEEDLE BAR, PRESSER MECHANISM & ACCESSORIE PART COMPONENTS

No.	Parts No.	Parts name	Remarks	Level	Cons	Qty
1	MDP170B1400	NEEDLE DPX17 #14	AMS-223CST(FOR DOMESTIC USE)			1
2	B1406210000	THREAD GUIDE	FOR AMS-223C*T			1
3	MC372000900	NEEDLE 135X17 #90	AMS-223CST(FOR JE)			1
4	B2618223C00	PRASTIC BRANK	FOR AMS-223C*L			4
5	B1601220000	INTERMEDIATE PRESSER A	FOR AMS-223C*T			1
6	SS7090410SP	SCREW 9/64-40 L= 3.5	FOR AMS-223C*L			4
7	SS2111010TP	SCREW 11/64-40 L=9.5	FOR AMS-223C*L			8
8	MDP170B1800	NEEDLE DPX17 #18	AMS-223CHT (FOR DOMESTIC USE, FOR EXPORT)			1
9	MC372001100	NEEDLE 135X17 #110	AMS-223CHT(FOR JE)			1
10	SS7091110SP	SCREW 9/64-40 L=10.5	FOR AMS-223C*T			1
11	B2557215A00	PLASTICS BLANK	FOR AMS-223C*T			2
12	B4310215000	LABEL GUIDE A	FOR AMS-223C*T			1
13	B43112200A0	LABEL GUIDE B ASM.	FOR AMS-223C*T			1
14	B4312220000	LABEL GUIDE C	FOR AMS-223C*T			1
15	SS4110715SP	SCREW 11/64-40 L=7	FOR AMS-223C*T			2
16	WP0450000SD	WASHER 4.5X8X0.5	FOR AMS-223C*T			2
17	SS4110715SP	SCREW 11/64-40 L=7	FOR AMS-223C*T			2
18	WP0450000SD	WASHER 4.5X8X0.5	FOR AMS-223C*T			2
19	SS4110715SP	SCREW 11/64-40 L=7	FOR AMS-223C*T			2
20	WP0450000SD	WASHER 4.5X8X0.5	FOR AMS-223C*T			2
21	B2553223C00	FEEDING FRAME	FOR AMS-223C*T			1
22	B2604223CA0	RECEIVER PLATE,RIGHT ASM.	FOR AMS-223C*T			1
23	B2604223C00	RECEIVER PLATE,RIGHT	FOR AMS-223C*T	*		1
24	B1816280000	GUIDE PIN	FOR AMS-223C*T	*		1
25	B2605223CA0	RECEIVER PLATE,LEFT ASM.	FOR AMS-223C*T			1
26	B2605223C00	RECEIVER PLATE,LEFT	FOR AMS-223C*T	*		1
27	B1816280000	GUIDE PIN	FOR AMS-223C*T	*		1
28	B2556223C00	LOWER PLATE	FOR AMS-223C*T			1
29	B2602223CA0	PRESSER FOOT MOUNT,RIGHT ASM.	FOR AMS-223C*T			1
30	B2602223C00	PRESSER FOOT MOUNT,RIGHT	FOR AMS-223C*T	*		1
31	B1816280000	GUIDE PIN	FOR AMS-223C*T	*		1
32	B2603223CA0	PRESSER FOOT MOUNT,LEFT ASM.	FOR AMS-223C*T			1
33	B2603223C00	PRESSER FOOT MOUNT,LEFT	FOR AMS-223C*T	*		1
34	B1816280000	GUIDE PIN	FOR AMS-223C*T	*		1
35	SS7151210SP	SCREW 15/64-28 L=12	FOR AMS-223C*T			4
36	WP0621026SP	WASHER 6.2X9.5X1	FOR AMS-223C*T			4
37	NS6150330SD	NUT 15/64-28	FOR AMS-223C*T			1
38	SS8150822TP	SCREW 15/64-28 L=8	FOR AMS-223C*T			1
39	SS7150910TP	SCREW	FOR AMS-223C*T			2
40	WP0651056SD	WASHER 6.5X11X1	FOR AMS-223C*T			2
41	WP0450000SD	WASHER 4.5X8X0.5	FOR AMS-223C*L			8
42	B1626850000	ADJUSTING NUT	FOR AMS-223C*L			8

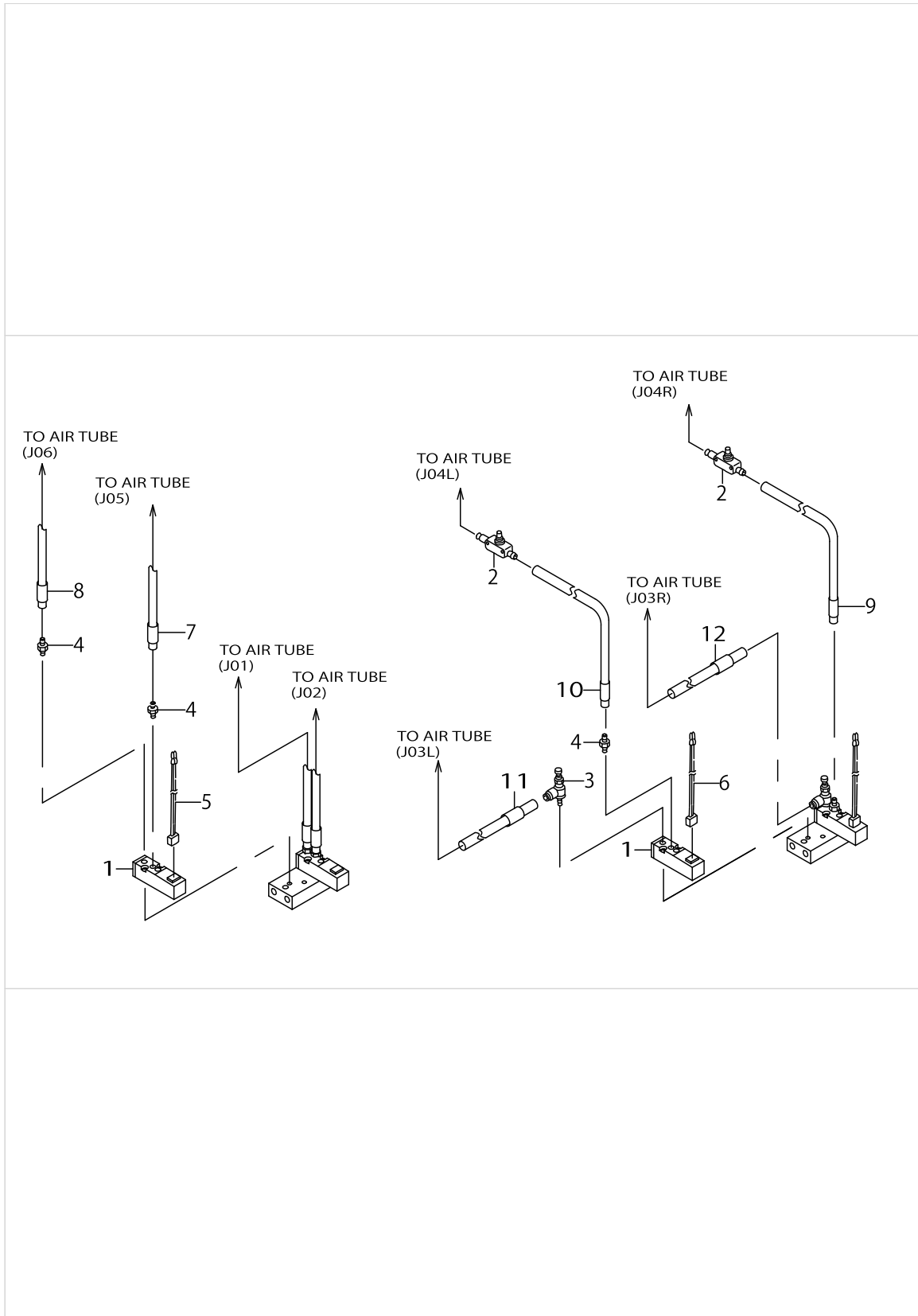
PNEUMATIC COMPONENTS(FOR AMS-223CST,AMS-223CHT)



PNEUMATIC COMPONENTS(FOR AMS-223CST,AMS-223CHT)

No.	Parts No.	Parts name	Remarks	Level	Cons	Qty
1	PV140501000	SOLENOID VALVE				1
2	PC012401000	SPEED CONTROLLER				2
3	PF070501000	PRESSURE DECREASING VALVE				1
4	PJ032052503	HOSE NIPPLE				7
5	B47122150A0	SOLENOID VALVE CONNECTOR ASM.				1
6	PV0351240B0	SOLENOID VALVE ASM.				1
7	PJ303040002	STRAIGHT UNION				1
8	PJ303040004	QUICK COUPLING				1
9	PJ304065101	ELBOW UNION 6XPT1/8				1
10	B4712215AA0	SOLENOID VALVE CONNECTOR ASM.A				1
11	B4712215BA0	SOLENOID VALVE CONNECTOR ASM.B				1
12	B471122000I	AIR TUBE LABEL J07				1
13	B471122000J	AIR TUBE LABEL J08				1

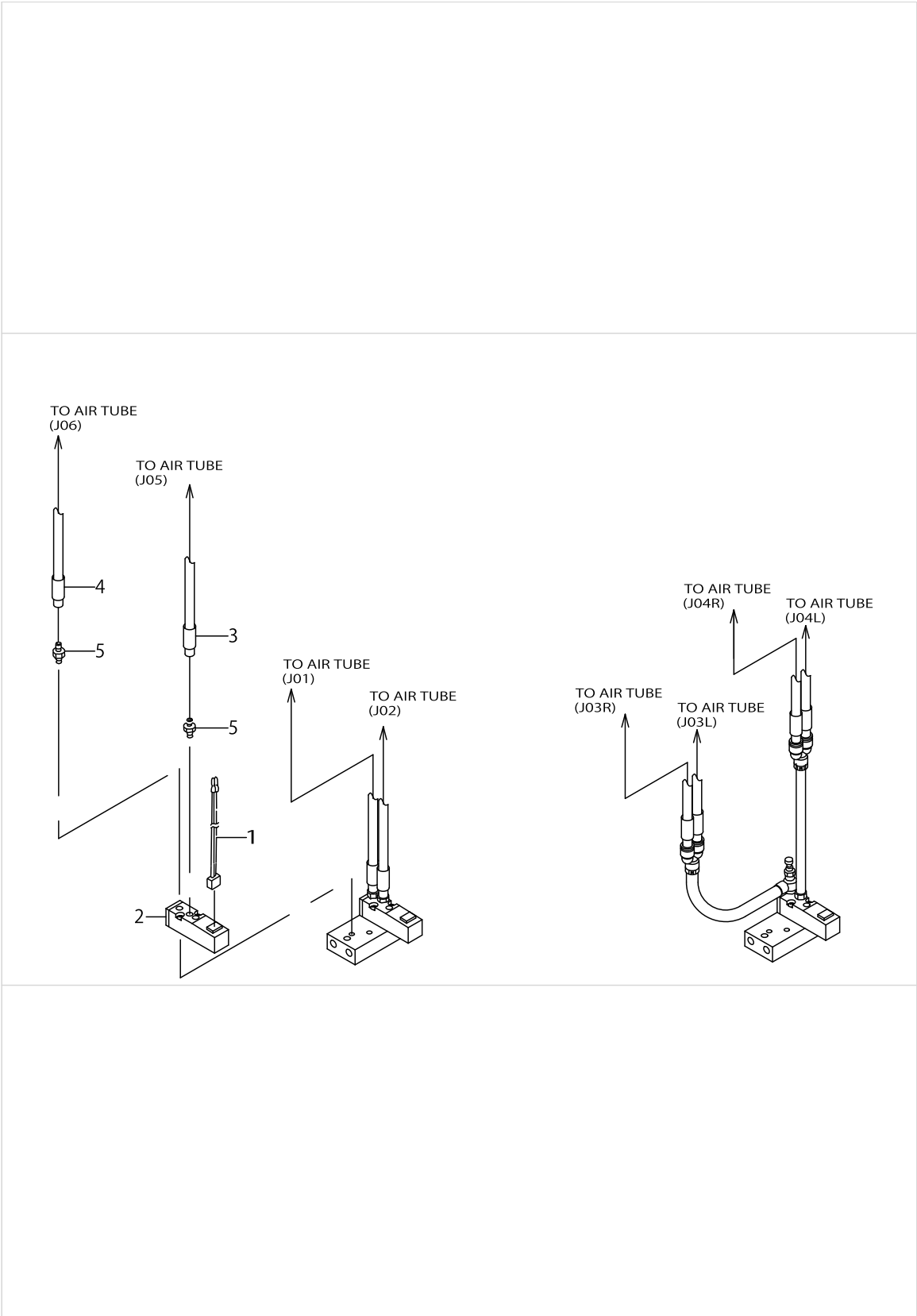
PNEUMATIC COMPONENTS(FOR AMS-223CSL,AMS-223CHL & AMS-223CGL)



PNEUMATIC COMPONENTS(FOR AMS-223CSL,AMS-223CHL & AMS-223CGL)

No.	Parts No.	Parts name	Remarks	Level	Cons	Qty
1	PV140501000	SOLENOID VALVE				2
2	PC012401000	SPEED CONTROLLER				2
3	PF070501000	PRESSURE DECREASING VALVE				1
4	PJ032052503	HOSE NIPPLE				3
5	B47122150A0	SOLENOID VALVE CONNECTOR ASM.				1
6	B4712215AA0	SOLENOID VALVE CONNECTOR ASM.A				1
7	B471122000E	AIR TUBE LABEL J05				1
8	B471122000F	AIR TUBE LABEL J06				1
9	B471122000H	AIR TUBE LABEL J04 RIGHT				1
10	B471122000D	AIR TUBE LABEL J04 LEFT				1
11	B471122000C	AIR TUBE LABEL J03 LEFT				1
12	B471122000G	AIR TUBE LABEL J03 RIGHT				1

PNEUMATIC COMPONENTS(FOR AMS-223CSB,AMS-223CHB & AMS-223CGB)



PNEUMATIC COMPONENTS(FOR AMS-223CSB,AMS-223CHB & AMS-223CGB)

No.	Parts No.	Parts name	Remarks	Level	Cons	Qty
1	B47122150A0	SOLENOID VALVE CONNECTOR ASM.				1
2	PV140501000	SOLENOID VALVE				1
3	B471122000E	AIR TUBE LABEL J05				1
4	B471122000F	AIR TUBE LABEL J06				1
5	PJ032052503	HOSE NIPPLE				2

HOW TO MAKE USE OF THIS PARTS LIST

1.As to "#01" and "#02" refer to the "Note" given at the bottom of the respective pages.

2.Codes on the "Qty" column

- Each numeral indicates the number of parts required.
- "0.1" and "2.5" indicate the length (in meters) of the respective parts.

3.Parentheses mean that the corresponding part is a subpart that constructs an assembly part.

4.Dotted lines on the Figures indicate assembly parts.

1. リストページの# 0 1、# 0 2の印は、ページ下の"注記"の説明を参照下さい。
2. 数量欄の数字は、個数を表し、0. 1、2. 5等の数値は、長さ（単位メートル）を表します。
3. 数量欄の（ ）は、組部品を構成している子部品であることを意味します。
4. イラストページの-----枠は、組構成であることを意味します。

Note : When there are parts not be listed in this parts list.
please refer to "ASM-223C PARTS LIST (No.1075)".

注記 : このパーツリストに記載されていない部品については、
AMS-223Cパーツリスト (No. 1075) を
ご参照下さい。

NUMERICAL INDEX OF PARTS

PART NO	PAGE	REF NO.	PART NO	PAGE	REF NO.	PART NO	PAGE	REF NO.
B1406210000	6	2	B4307220000	4	51	PJ032052503	8	4
B1601220000	6	5	B4309220000	2	41	PJ032052503	10	4
B1625220000	2	21	B4310215000	6	12	PJ032052503	12	5
B1626220000	2	22	B43112200A0	6	13	PJ046052503	4	55
B1626850000	6	42	B4312220000	6	14	PJ303040002	8	7
B1816280000	4	64	B4320220000	2	43	PJ303040004	8	8
B1816280000	6	34	B4327220000	4	53	PJ304065101	8	9
B185351200E	2	25	B4328220000	2	42	PV0351240B0	8	6
B2304205000	2	20	B471122000C	10	11	PV140501000	8	1
B2514215000	2	10	B471122000D	10	10	PV140501000	10	1
B2516215000	2	24	B471122000E	2	5	PV140501000	12	2
B2518215000	2	14	B471122000E	10	7	RE0300000K0	2	23
B2518215A00	2	16	B471122000E	12	3	SB307000100	2	45
B2527215000	2	15	B471122000F	10	8	SB307000200	2	39
B2528215000	2	8	B471122000F	12	4	SD0460703TP	4	52
B2530215000	2	28	B471122000G	10	12	SS1121010SP	2	44
B2548215000	4	65	B471122000H	10	9	SS2111010TP	6	7
B2553215A00	4	56	B471122000I	4	68	SS4110715SP	6	19
B2553223C00	6	21	B471122000I	8	12	SS5110710SP	2	47
B2556223C00	6	28	B471122000J	4	69	SS6110520TP	2	26
B2557215A00	6	11	B471122000J	8	13	SS6110640SP	2	38
B2558223C00	4	57	B47122150A0	8	5-11	SS6121010SP	2	11
B25792290A0	2	2	B47122150A0	10	5	SS6151412TP	2	34
B2602223C00	6	30	B47122150A0	12	1	SS7090410SP	6	6
B2602223CA0	6	29	B4712215AA0	8	10	SS7090910TP	4	49
B2603223C00	6	33	B4712215AA0	10	6	SS7091110SP	6	10
B2603223CA0	6	32	B4712215BA0	8	5-11	SS7150910TP	4	58
B2604223C00	6	23	BT0400251EB	2	30	SS7150910TP	6	39
B2604223CA0	6	22	CS0790731SH	2	12	SS7150940SP	2	40
B2605223C00	6	26	HX000220000	4	66	SS7151210SP	6	35
B2605223CA0	6	25	HX002330000	4	67	SS8110422TP	2	19
B2606223C00	2	6	MC372000900	6	1-3-8	SS8150822TP	4	61
B2607223C00	4	63	MC372001100	6	9	SS8150822TP	6	38
B2607223CA0	4	62	MDP170B1400	6	1-3-8	SS8150912TH	2	35
B2618223C00	6	4	MDP170B1800	6	1-3-8	WP0450000SD	6	41
B3012490000	2	27	NS6150310SP	2	36	WP0621026SP	6	36
B3012816000	2	18	NS6150330SD	4	60	WP0650876SD	2	9
B322877100B	2	46	NS6150330SD	6	37	WP0651056SD	4	59
B4301223C00	2	31	PA1602510A0	2	1	WP0651056SD	6	40
B4301223CA0	2	29	PC012401000	2	7	WP0820816SD	2	17
B4302220000	2	33	PC012401000	8	2			
B4303220000	2	32	PC012401000	10	2			
B4304220000	4	48	PF070501000	8	3			
B4305220000	4	50	PF070501000	10	3			
B4306220000	4	54	PJ032052503	2	3			