

MODEL : AK88/AK89

List No : 1003-00

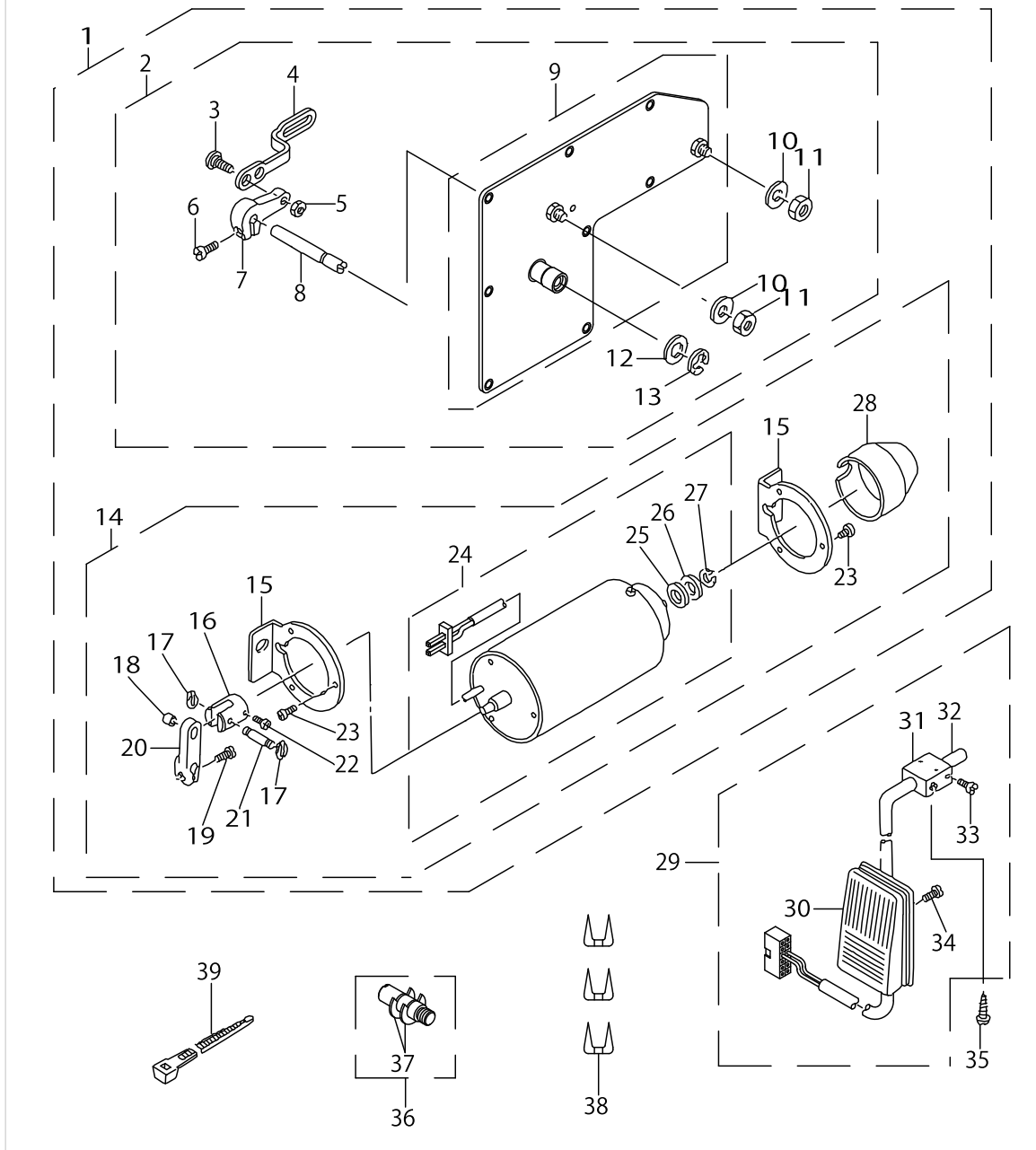
PARTS LIST

Published:09/10/2017

CONTENTS

AK88,AK89.....	1
HOW TO MAKE USE OF THIS PARTS LIST	3

TABLE OF UNIT COMBINATIONS		
ユニット組み合わせ表		
AK-88 (GAK880010AA)	○	○
AK-89 (GAK890010AA)	○	○



AK88,AK89

No.	Parts No.	Parts name	Remarks	Level	Cons	Qty
1	GAK880100AA	AK" DEVICE ASM.				1
2	GAK880200BA	SIDE PLATE ASM. B		*		1
3	SD0800352SP	HINGE SCREW D= 8 H= 3.5		*		1
4	GAK88026000	SOLENOID LINK		*		1
5	NS6150310SP	NUT 15/64-28		*		1
6	SS6121210SP	SCREW 3/16-28 L=12		*		1
7	GAK33027000	SOLENOID ARM		*		1
8	GAK33028000	SOLENOID SHAFT		*		1
9	GAK880200AA	SIDE PLATE ASM.A		*		1
10	WP0621036SP	WASHER		*		2
11	NS6150430SP	NUT 15/64-28		*		2
12	WP1021016SD	WASHER		*		1
13	RE0700000K0	SNAP RING 7		*		1
14	GAK820300BA	AK" SOLENOID ASM. B		*		1
15	GAK33034000	SOLENOID BASE		*		2
16	GAK33035000	SOLENOID COLLAR		*		1
17	GAK33014000	SNAP RING		*		2
18	GAK33013000	SOLENOID PIN COLLAR		*		1
19	SS6121210SP	SCREW 3/16-28 L=12		*		1
20	GAK33011000	SOLENOID ARM, A		*		1
21	GAK33012000	SOLENOID PIN		*		1
22	SS4110915SP	SCREW 11/64-40 L=9		*		1
23	SS4120915SP	SCREW 3/16-28 L=9		*		6
24	GAK820300AA	AK" SOLENOID ASM. A		*		1
25	GAK33031000	SOLENOID RUBBER, A		*		1
26	WP1052000SC	WASHER 10.5X18X2		*		1
27	RC0931011KP	RETAINING RING		*		1
28	GAK3303600A	SOLENOID COVER		*		1
29	GAK840900B0	LIFTER KNEE SWITCH ASM. B				1
30	GAK840900A0	KNEE SWITCH ASM. A		*		1
31	MAT80230T00	KNEE SWITCH SUPPORT BASE		*		2
32	MAT80231T00	DRIVING BAR, T002		*		1
33	SS6151220SP	SCREW 15/64-28 L=11.5		*		4
34	SS7111410SP	SCREW 11/64-40 L=14		*		2
35	SK3514000SC	WOOD SCREW D=5.1 L=40				2
36	GAK880400A0	SHAFT PIN ASM.				1
37	RE0500000K0	E-RING				2
38	MAO11532000	CORD STAPLE				3
39	HX000430000	CLIP				1

HOW TO MAKE USE OF THIS PARTS LIST

1.As to "#01" and "#02" refer to the "Note" given at the bottom of the respective pages.

2.Codes on the "Qty" column

- Each numeral indicates the number of parts required.
- "0.1" and "2.5" indicate the length (in meters) of the respective parts.

3.Parentheses mean that the corresponding part is a subpart that constructs an assembly part.

4.Dotted lines on the Figures indicate assembly parts.

1. リストページの# 0 1、# 0 2の印は、ページ下の"注記"の説明を参照下さい。
2. 数量欄の数字は、個数を表し、0. 1、2. 5等の数値は、長さ（単位メートル）を表します。
3. 数量欄の（ ）は、組部品を構成している子部品であることを意味します。
4. イラストページの-----枠は、組構成であることを意味します。

NUMERICAL INDEX OF PARTS

PART NO	PAGE	REF NO.
GAK33011000	2	20
GAK33012000	2	21
GAK33013000	2	18
GAK33014000	2	17
GAK33027000	2	7
GAK33028000	2	8
GAK33031000	2	25
GAK33034000	2	15
GAK33035000	2	16
GAK3303600A	2	28
GAK820300AA	2	24
GAK820300BA	2	14
GAK840900A0	2	30
GAK840900B0	2	29
GAK880100AA	2	1
GAK880200AA	2	9
GAK880200BA	2	2
GAK88026000	2	4
GAK880400A0	2	36
HX000430000	2	39
MAO11532000	2	38
MAT80230T00	2	31
MAT80231T00	2	32
NS6150310SP	2	5
NS6150430SP	2	11
RC0931011KP	2	27
RE0500000K0	2	37
RE0700000K0	2	13
SD0800352SP	2	3
SK3514000SC	2	35
SS4110915SP	2	22
SS4120915SP	2	23
SS6121210SP	2	19
SS6151220SP	2	33
SS7111410SP	2	34
WP0621036SP	2	10
WP1021016SD	2	12
WP1052000SC	2	26