

MODEL : MO-3700 SUBCLASSES 3715/3716/3743

List No : 0997-03

# PARTS LIST

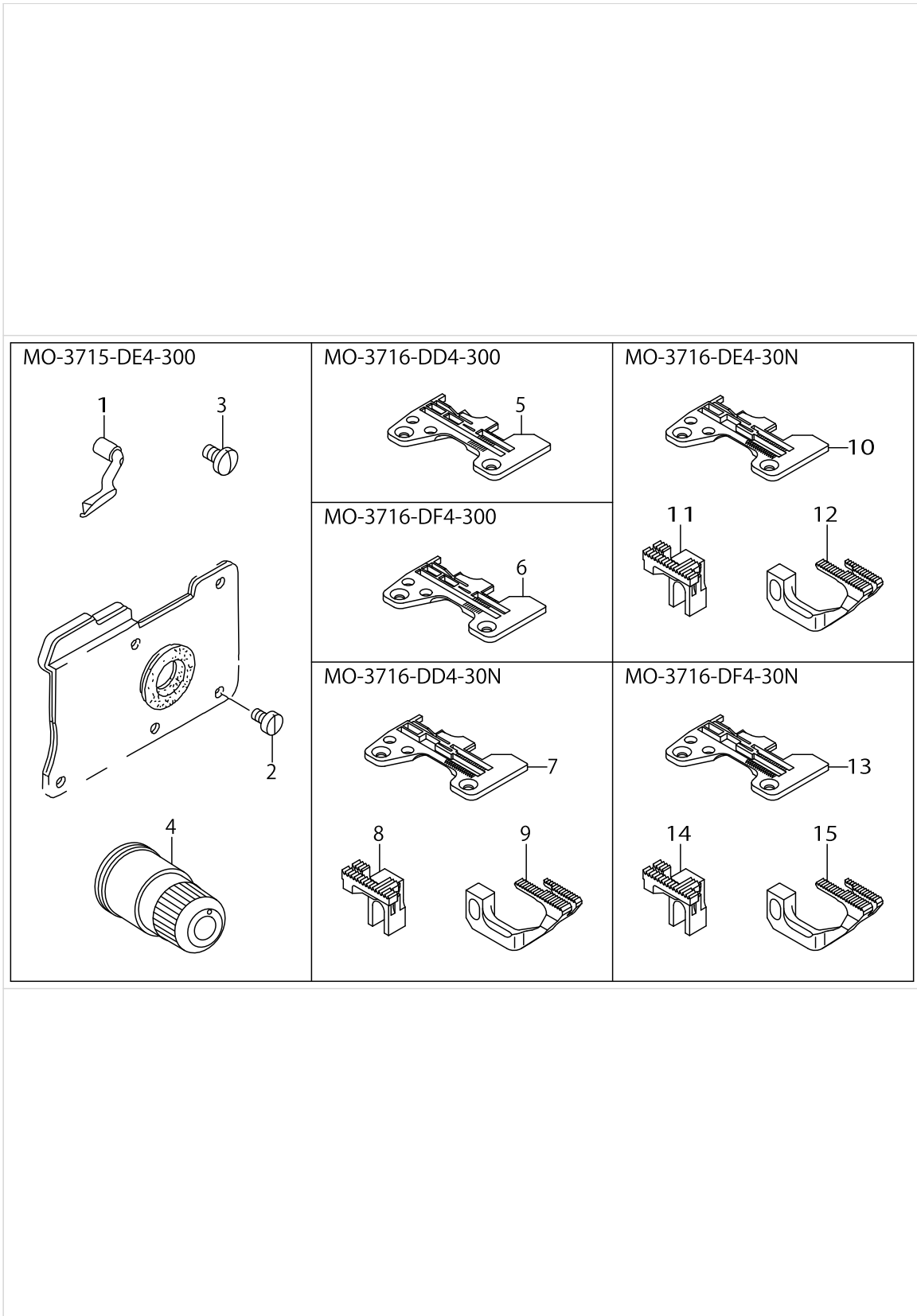
Published:09/10/2017

## CONTENTS

---

MO-3700 SUBCLASSES (1).....	1
MO-3700 SUBCLASSES (2).....	3
MO-3700 SUBCLASSES (3).....	5
MO-3700 SUBCLASSES (4).....	7
MO-3700 SUBCLASSES (5).....	9
MO-3700 SUBCLASSES (6).....	11
MO-3700 SUBCLASSES (7).....	13
MO-3700 SUBCLASSES (8).....	15
MO-3700 SUBCLASSES (9).....	17
MO-3700 SUBCLASSES (10).....	19
MO-3700 SUBCLASSES (11).....	21
MO-3700 SUBCLASSES (12).....	25
MO-3700 SUBCLASSES (13).....	29
LIST FOR INFORMATION OF CHANGE.....	33
HOW TO MAKE USE OF THIS PARTS LIST.....	34

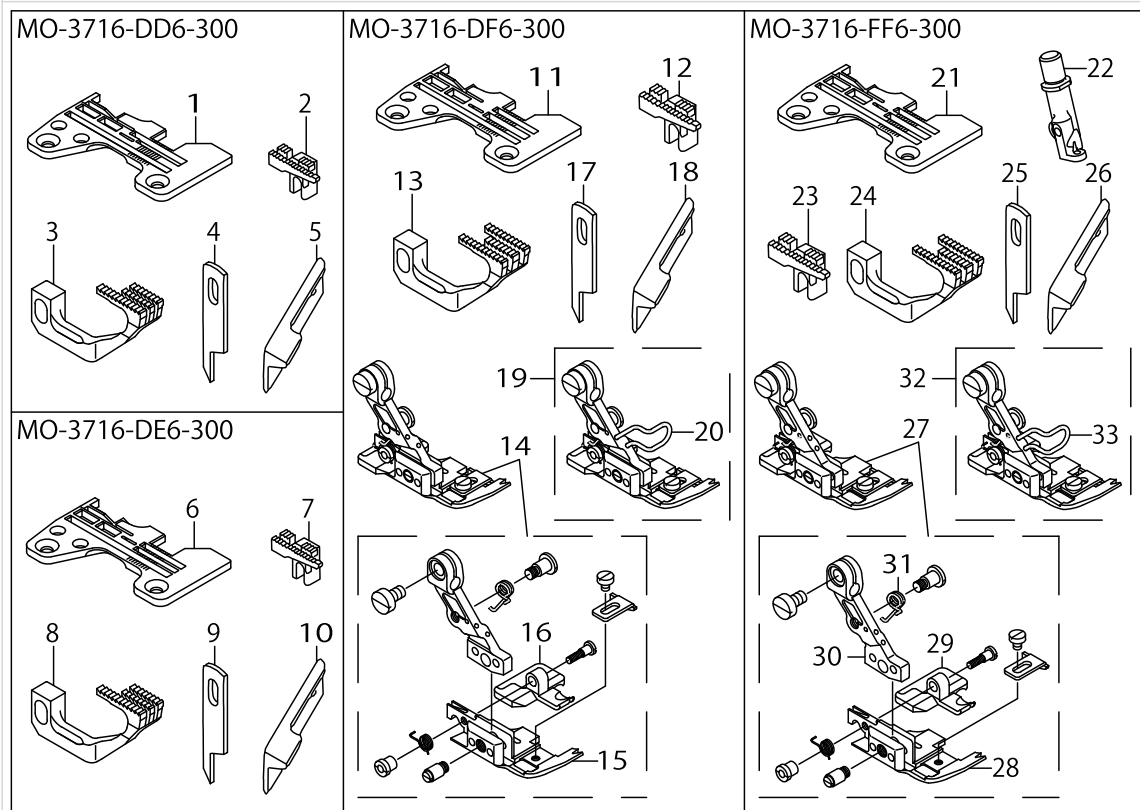
MO-3700 SUBCLASSES (1)



MO-3700 SUBCLASSES (1)

No.	Parts No.	Parts name	Remarks	Level	Cons	Qty
1	11888609	UPPER SPREADER				1
2	SS6090630SP	SCREW 9/64-40 L=6				1
3	SS7110710SL	SCREW 11/64-40 L=7.0				1
4	12254850	THREAD TENSION SPRING COMPL.				1
5	R4508J0DD00	THROAT PLATE				1
6	R4508J0FD00	THROAT PLATE				1
7	R4508J0DD0E	THROAT PLATE				1
8	12171302	MAIN FEED DOG				1
9	12174306	SUB-FEED DOG				1
10	R4508J0ED0D	THROAT PLATE				1
11	12171302	MAIN FEED DOG				1
12	12174306	SUB-FEED DOG				1
13	R4508J0FD0B	THROAT PLATE				1
14	12171302	MAIN FEED DOG				1
15	12174306	SUB-FEED DOG				1

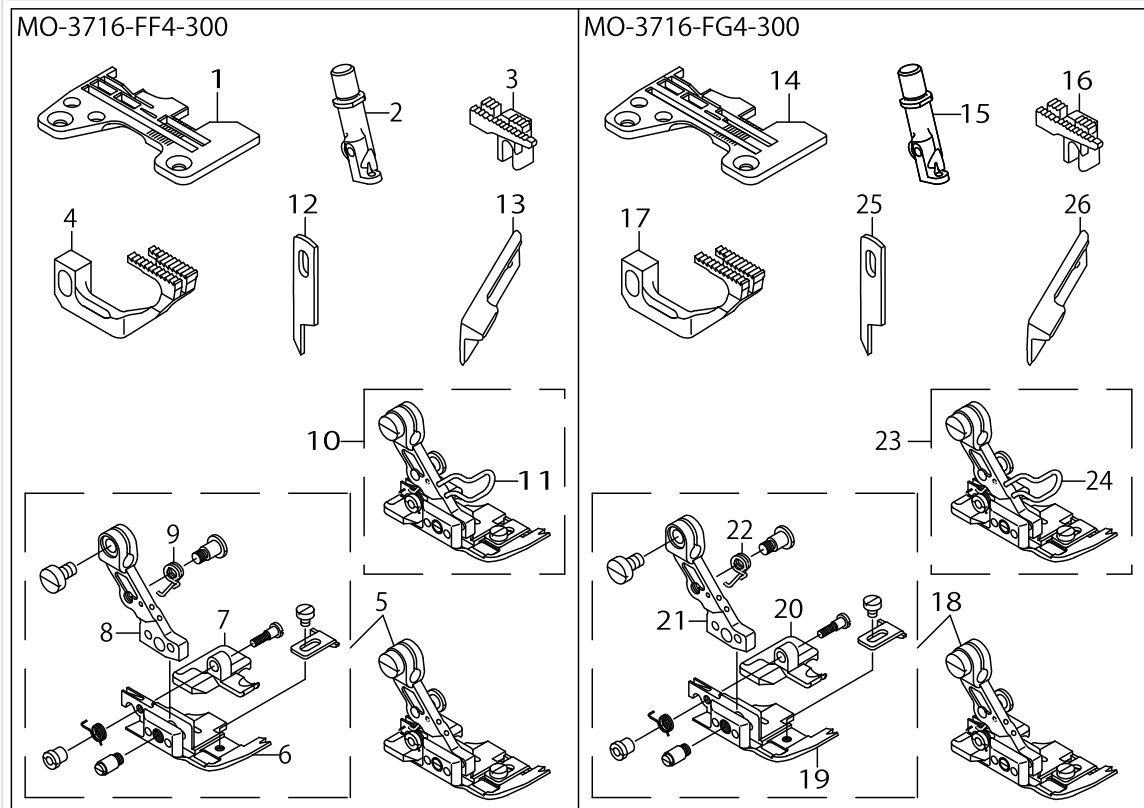
MO-3700 SUBCLASSES (2)



## MO-3700 SUBCLASSES (2)

No.	Parts No.	Parts name	Remarks	Level	Cons	Qty
1	R4608J0DD00	THROAT PLATE				1
2	11882909	MAIN FEED DOG				1
3	12173209	DIFFERENTIAL FEED DOG				1
4	11845609	KNIFE				1
5	11845807	UPPER KNIFE	FOR EXPORT			1
6	R4608J0ED00	THROAT PLATE				1
7	11882909	MAIN FEED DOG				1
8	12173209	DIFFERENTIAL FEED DOG				1
9	11845609	KNIFE				1
10	11845807	UPPER KNIFE	FOR EXPORT			1
11	R4608J0FD00	THROAT PLATE				1
12	11987708	MAIN FEED DOG				1
13	12173308	DIFFERENTIAL FEED DOG				1
14	12154159	PRESSER FOOT ASM.				1
15	12162608	PRESSER FOOT		*		1
16	12165205	REAR PRESSER FOOT		*		1
17	11845609	KNIFE				1
18	11845807	UPPER KNIFE	FOR EXPORT			1
19	12154167	PRESSER FOOT ASM.	FOR EXPORT			1
20	12168209	FINGER GUARD		*		1
21	R4612J0FD00	THROAT PLATE				1
22	12150306	NEEDLE CLAMP, CHAIN LOOPER				1
23	11884004	MAIN FEED DOG				1
24	12173308	DIFFERENTIAL FEED DOG				1
25	11845609	KNIFE				1
26	11845807	UPPER KNIFE	FOR EXPORT			1
27	12154258	PRESSER FOOT ASM.				1
28	12162707	PRESSER FOOT		*		1
29	12165304	REAR PRESSER FOOT		*		1
30	12157004	PRESSER FOOT HINGE		*		1
31	12168001	PRESSER FOOT ARM SPRING, (B)		*		1
32	12154266	PRESSER FOOT ASM.	FOR EXPORT			1
33	12168209	FINGER GUARD		*		1

MO-3700 SUBCLASSES (3)

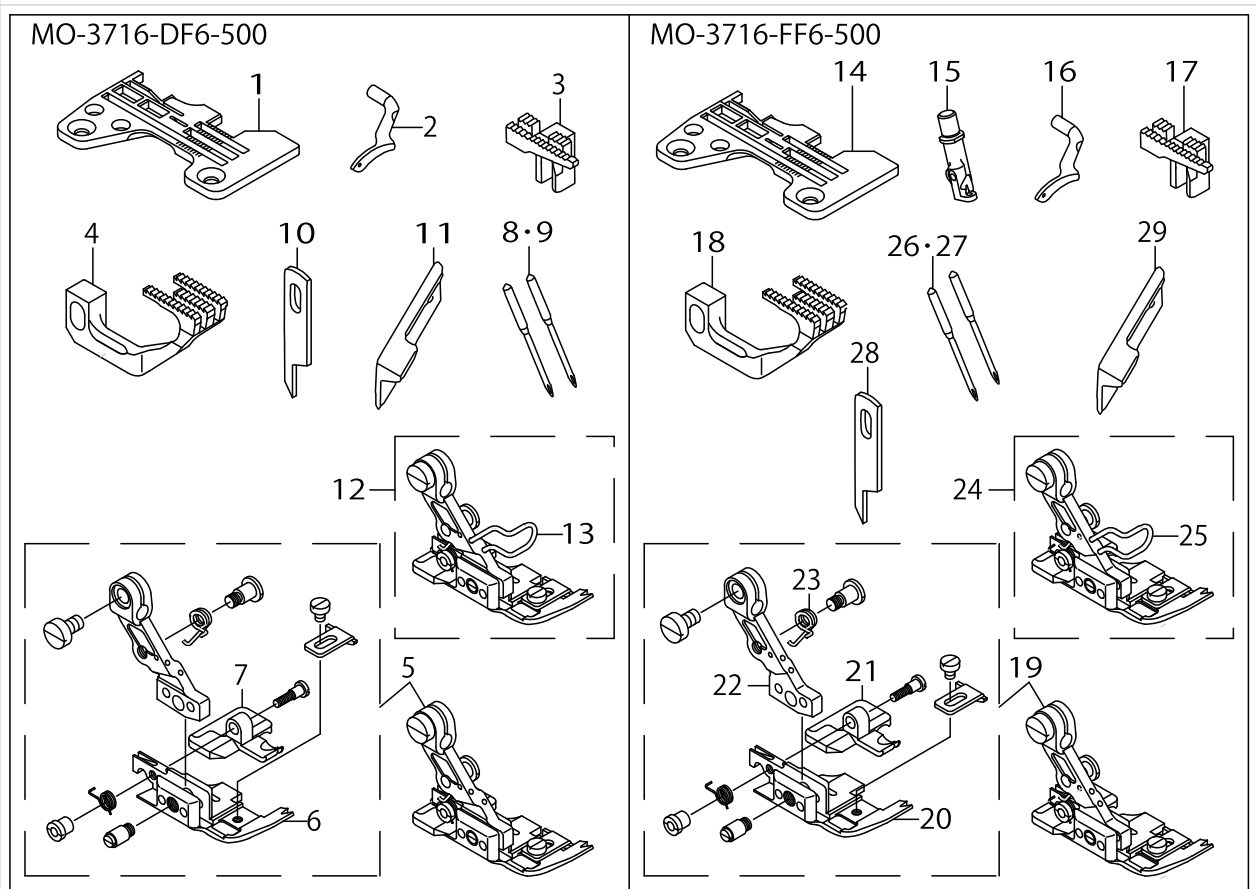


## MO-3700 SUBCLASSES (3)

No.	Parts No.	Parts name	Remarks	Level	Cons	Qty
1	R4508J0FD00	THROAT PLATE				1
2	12150306	NEEDLE CLAMP, CHAIN LOOPER				1
3	11884004	MAIN FEED DOG				1
4	12173100	DIFFERENTIAL FEED DOG				1
5	12154258	PRESSER FOOT ASM.				1
6	12162707	PRESSER FOOT		*		1
7	12165304	REAR PRESSER FOOT		*		1
8	12157004	PRESSER FOOT HINGE		*		1
9	12168001	PRESSER FOOT ARM SPRING, (B)		*		1
10	12154266	PRESSER FOOT ASM.	FOR EXPORT			1
11	12168209	FINGER GUARD		*		1
12	11845609	KNIFE				1
13	11845807	UPPER KNIFE	FOR EXPORT			1
14	R4512J0GD00	THROAT PLATE				1
15	12150306	NEEDLE CLAMP, CHAIN LOOPER				1
16	11884004	MAIN FEED DOG				1
17	12173100	DIFFERENTIAL FEED DOG				1
18	12154258	PRESSER FOOT ASM.				1
19	12162707	PRESSER FOOT		*		1
20	12165304	REAR PRESSER FOOT		*		1
21	12157004	PRESSER FOOT HINGE		*		1
22	12168001	PRESSER FOOT ARM SPRING, (B)		*		1
23	12154266	PRESSER FOOT ASM.	FOR EXPORT			1
24	12168209	FINGER GUARD		*		1
25	11845609	KNIFE				1
26	11845807	UPPER KNIFE	FOR EXPORT			1



MO-3700 SUBCLASSES (4)

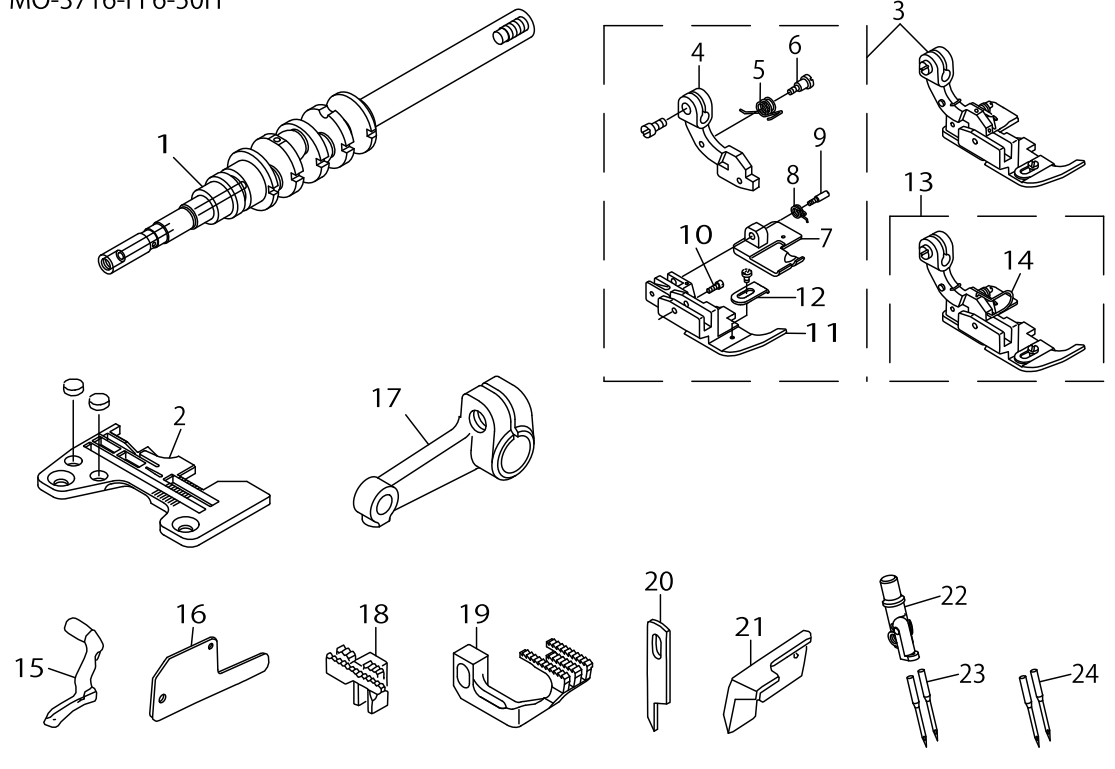


## MO-3700 SUBCLASSES (4)

No.	Parts No.	Parts name	Remarks	Level	Cons	Qty
1	R4608J0FG00	THROAT PLATE				1
2	11999208	UPPER LOOPER				1
3	11884400	MAIN FEED DOG				1
4	12173506	DIFFERENTIAL FEED DOG				1
5	12154159	PRESSER FOOT ASM.				1
6	12162608	PRESSER FOOT		*		1
7	12165205	REAR PRESSER FOOT		*		1
8	MDC270B1600	NEEDLE DCX27 #16				2
9	MC033601000	NEEDLE B-27 NM100	FOR JE			2
10	11845609	KNIFE				1
11	11845807	UPPER KNIFE	FOR EXPORT			1
12	12154167	PRESSER FOOT ASM.	FOR EXPORT			1
13	12168209	FINGER GUARD		*		1
14	R4612J0FG00	THROAT PLATE				1
15	12150306	NEEDLE CLAMP, CHAIN LOOPER				1
16	11999208	UPPER LOOPER				1
17	11883006	MAIN FEED DOG				1
18	12173506	DIFFERENTIAL FEED DOG				1
19	12154258	PRESSER FOOT ASM.				1
20	12162707	PRESSER FOOT		*		1
21	12165304	REAR PRESSER FOOT		*		1
22	12157004	PRESSER FOOT HINGE		*		1
23	12168001	PRESSER FOOT ARM SPRING, (B)		*		1
24	12154266	PRESSER FOOT ASM.	FOR EXPORT			1
25	12168209	FINGER GUARD		*		1
26	MDC270B1600	NEEDLE DCX27 #16				2
27	MC033601000	NEEDLE B-27 NM100	FOR JE			2
28	11845609	KNIFE				1
29	11845807	UPPER KNIFE	FOR EXPORT			1

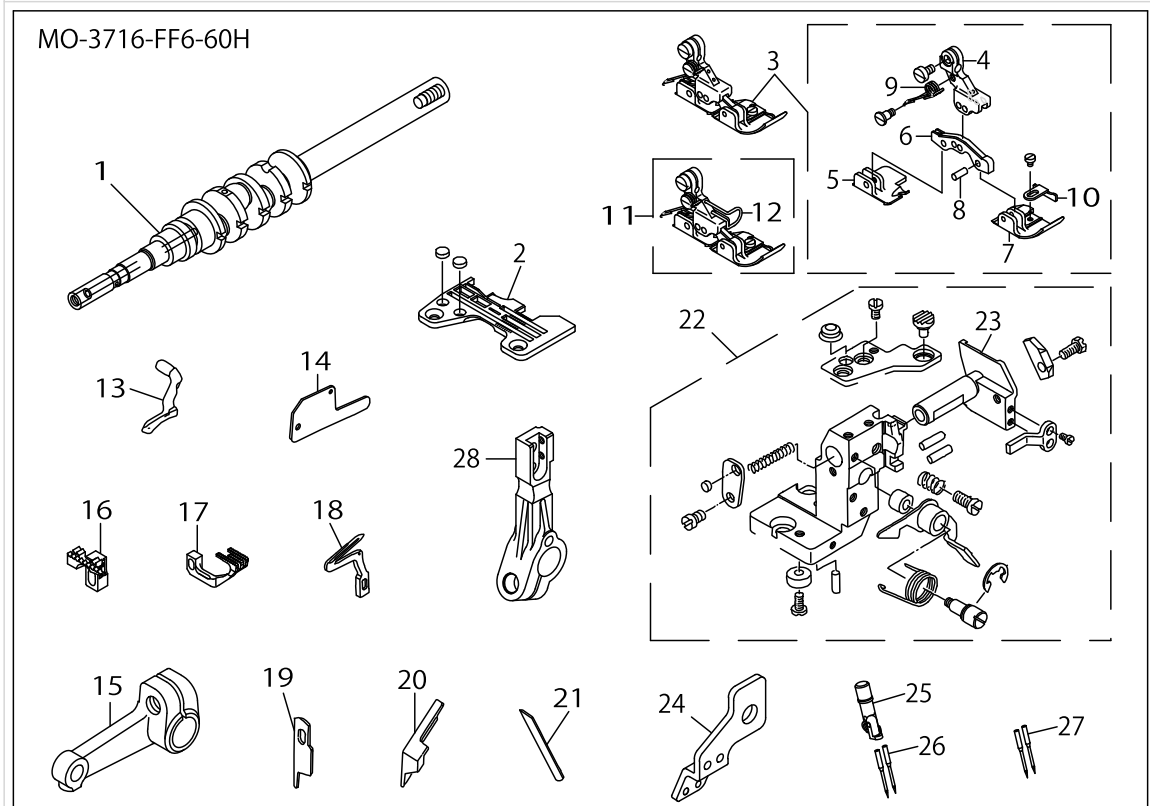
MO-3700 SUBCLASSES (5)

MO-3716-FF6-50H



## MO-3700 SUBCLASSES (5)

No.	Parts No.	Parts name	Remarks	Level	Cons	Qty
1	12107207	CRANKSHAFT				1
2	R4612J0FF00	THROAT PLATE				1
3	11991171	PRESSER FOOT ASM.				1
4	11991015	PRESSER FOOT HINGE		*		1
5	B151581600B	PRESSER FOOT ARM SPRING B		*		1
6	B1514816000	SCREW		*		1
7	11991205	REAR PRESSER FOOT		*		1
8	11991304	SPRING		*		1
9	11930807	HINGE PIN		*		1
10	11993508	PRESSER FOOT HINGE PIN		*		1
11	11991114	HINGED TYPE PRESSER FOOT		*		1
12	B1530816D00	AUXILIARY STOPPER		*		1
13	11991189	PRESSER FOOT ASM.	FOR EXPORT			1
14	11820800	FINGER GUARD		*		1
15	11991908	UPPER LOOPER				1
16	11991601	UPPER LOOPER GUIDE COVER				1
17	11831500	UPPER LOOPER ARM B				1
18	11883006	MAIN FEED DOG				1
19	12173506	DIFFERENTIAL FEED DOG				1
20	11845609	KNIFE				1
21	11845807	UPPER KNIFE	FOR EXPORT			1
22	12150306	NEEDLE CLAMP, CHAIN LOOPER				1
23	MDC270B1600	NEEDLE DCX27 #16				2
24	MC033601000	NEEDLE B-27 NM100	FOR JE			2

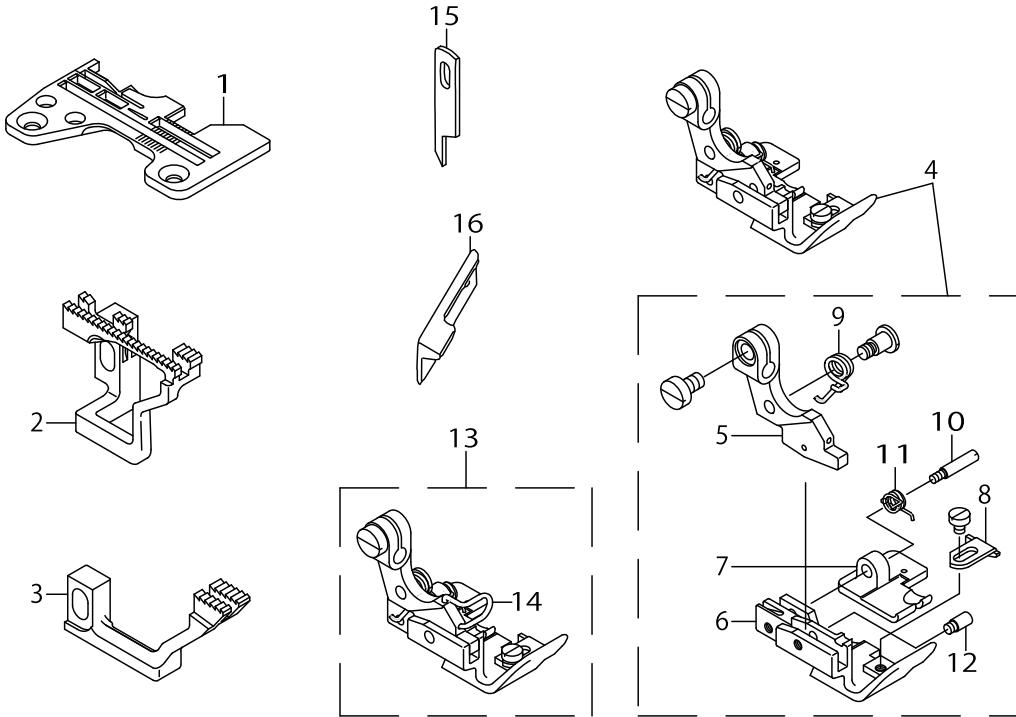


## MO-3700 SUBCLASSES (6)

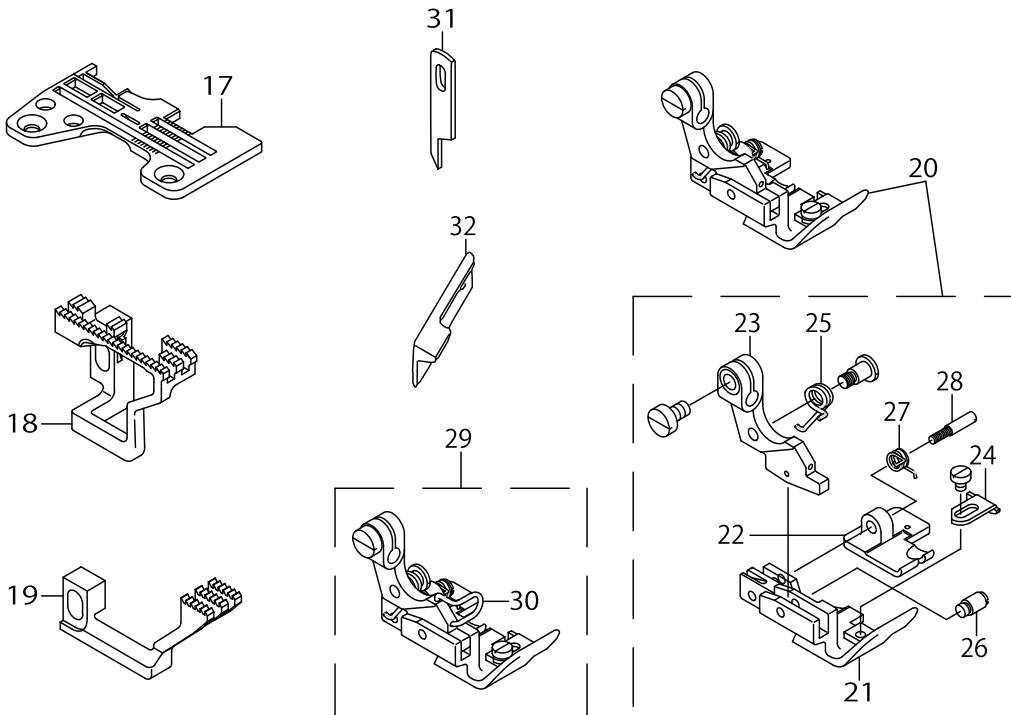
No.	Parts No.	Parts name	Remarks	Level	Cons	Qty
1	12107306	CRANKSHAFT				1
2	R4612J0FK00	THROAT PLATE				1
3	12155552	PRESSER FOOT ASM.				1
4	12157319	PRESSER FOOT HINGE ARM		*		1
5	12165908	REAR PRESSER FOOT		*		1
6	12168407	PRESSER FOOT HINGE		*		1
7	12164000	PRESSER FOOT		*		1
8	11930708	PRESSER FOOT HINGE PIN		*		3
9	12168506	PRESSER FOOT ARM SPRING		*		1
10	12168605	CLOTH GUIDE		*		1
11	12155560	PRESSER FOOT ASM.	FOR EXPORT			1
12	12168803	FINGER GUARD		*		1
13	12176202	UPPER LOOPER				1
14	11991601	UPPER LOOPER GUIDE COVER				1
15	11831500	UPPER LOOPER ARM B				1
16	12171104	MAIN FEED DOG				1
17	12174207	DIFFERENTIAL FEED DOG				1
18	11999802	LOWER LOOPER				1
19	12004909	KNIFE				1
20	11565900	UPPER KNIFE	FOR EXPORT			1
21	11566502	LOWER KNIFE				1
22	12133682	LOWER KNIFE BRACKET ASM.				1
23	12133500	LOWER KNIFE SLIDE STUD		*		1
24	12112801	TAKE-UP LEVER GUIDE				1
25	12150702	NEEDLE CLAMP, CHAIN LOOPER				1
26	MDC270B2100	NEEDLE DCX27 #21				2
27	MC033601300	NEEDLE B-27 NM130	FOR JE			2
28	12273900	LOWER LOOPER SUPPORT ARM				1

MO-3700 SUBCLASSES (7)

MO-3716-DE4-320



MO-3716-DF6-320

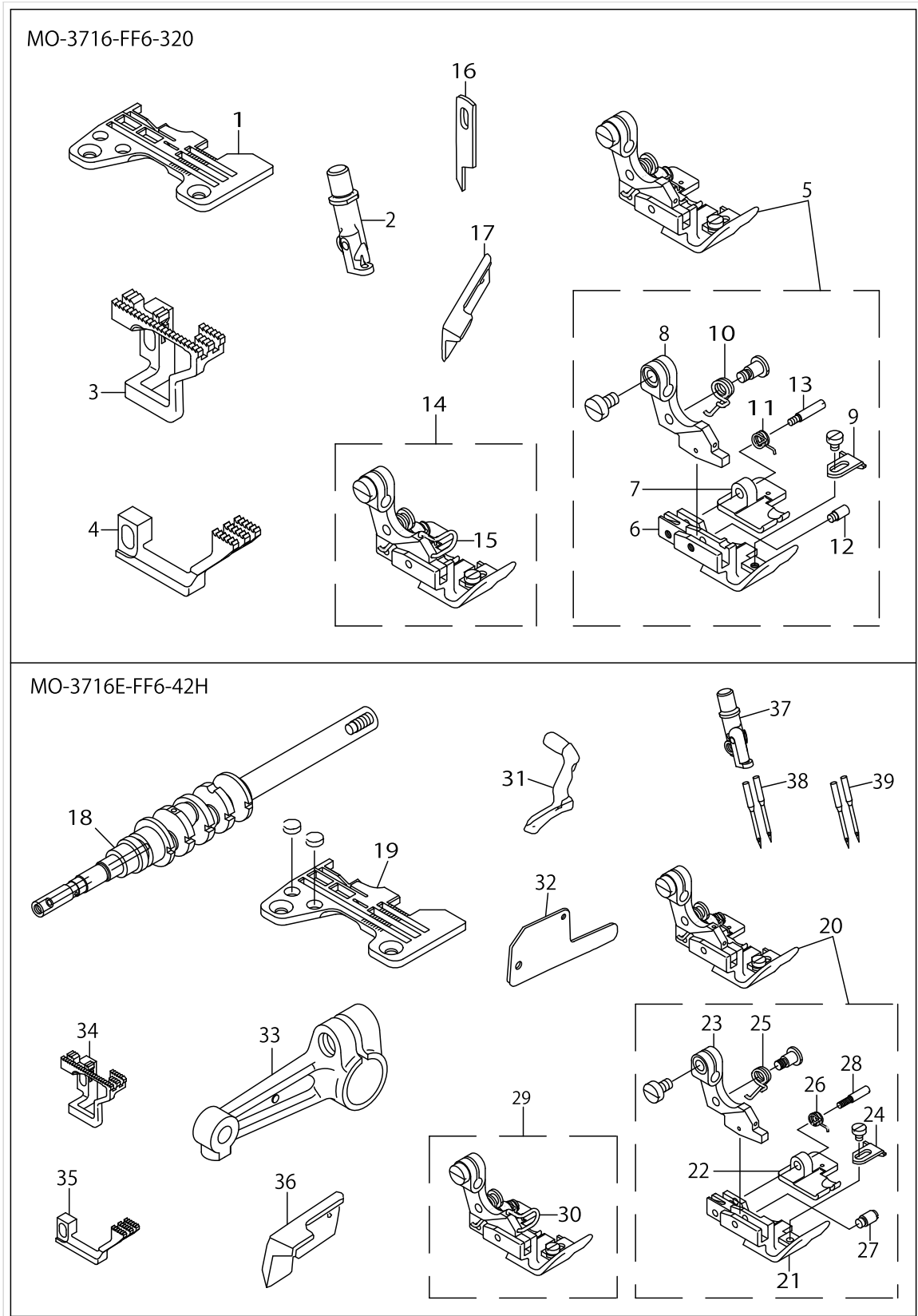


## MO-3700 SUBCLASSES (7)

No.	Parts No.	Parts name	Remarks	Level	Cons	Qty
1	R4508JOED0B	THROAT PLATE				1
2	12170700	MAIN FEED DOG				1
3	12172904	DIFFERENTIAL FEED DOG				1
4	12154654	PRESSER FOOT ASM.				1
5	12157103	PRESSER FOOT HINGE		*		1
6	12163101	FRONT PRESSER FOOT		*		1
7	12165502	REAR PRESSER FOOT		*		1
8	12168100	CLOTH GUIDE		*		1
9	B1515816000	PRESSER FOOT ARM SPRING		*		1
10	11930807	HINGE PIN		*		1
11	11991304	SPRING		*		1
12	11993508	PRESSER FOOT HINGE PIN		*		1
13	12154662	PRESSER FOOT ASM.	FOR EXPORT			1
14	11820800	FINGER GUARD		*		1
15	11845609	KNIFE				1
16	11845807	UPPER KNIFE	FOR EXPORT			1
17	R4608J0FD0A	THROAT PLATE				1
18	12170809	MAIN FEED DOG				1
19	12173407	DIFFERENTIAL FEED DOG				1
20	12154753	PRESSER FOOT ASM.				1
21	12163200	FRONT PRESSER FOOT		*		1
22	12165502	REAR PRESSER FOOT		*		1
23	12168100	CLOTH GUIDE		*		1
24	B1515816000	PRESSER FOOT ARM SPRING		*		1
25	12157103	PRESSER FOOT HINGE		*		1
26	11993508	PRESSER FOOT HINGE PIN		*		1
27	11991304	SPRING		*		1
28	11930807	HINGE PIN		*		1
29	12154761	PRESSER FOOT ASM.	FOR EXPORT			1
30	11820800	FINGER GUARD	FOR EXPORT	*		1
31	11845609	KNIFE				1
32	11845807	UPPER KNIFE	FOR EXPORT			1

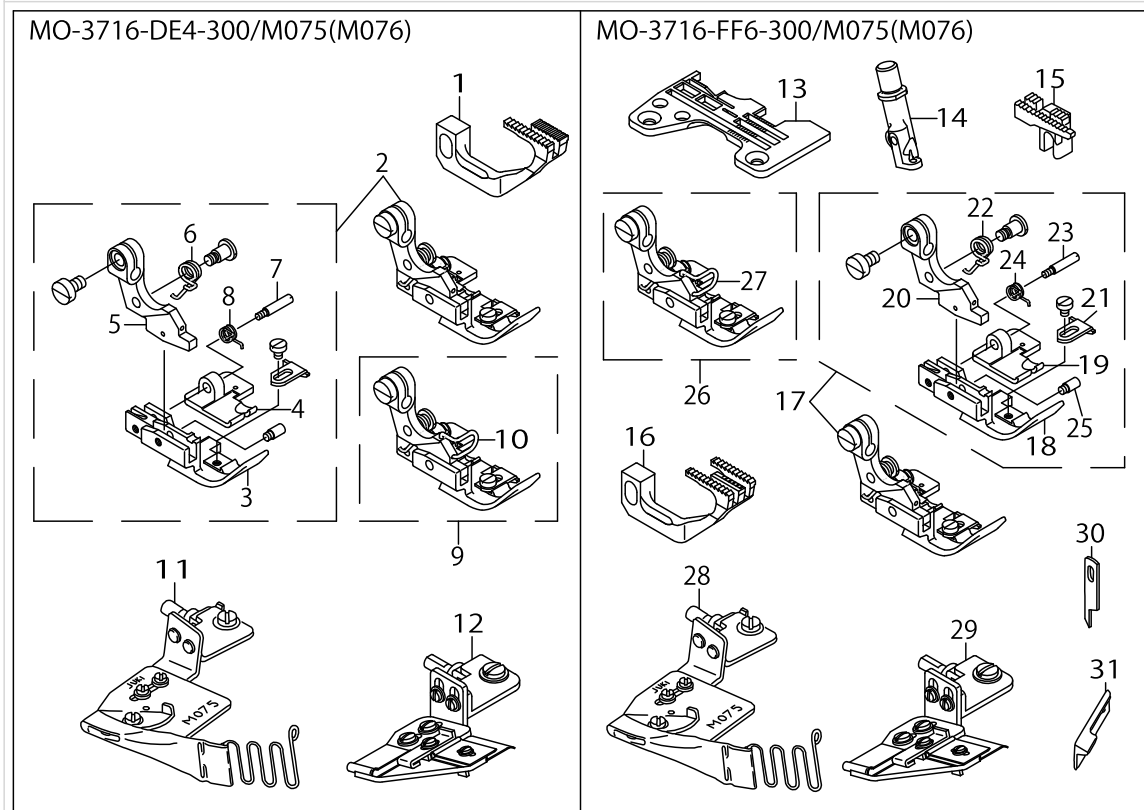


MO-3700 SUBCLASSES (8)



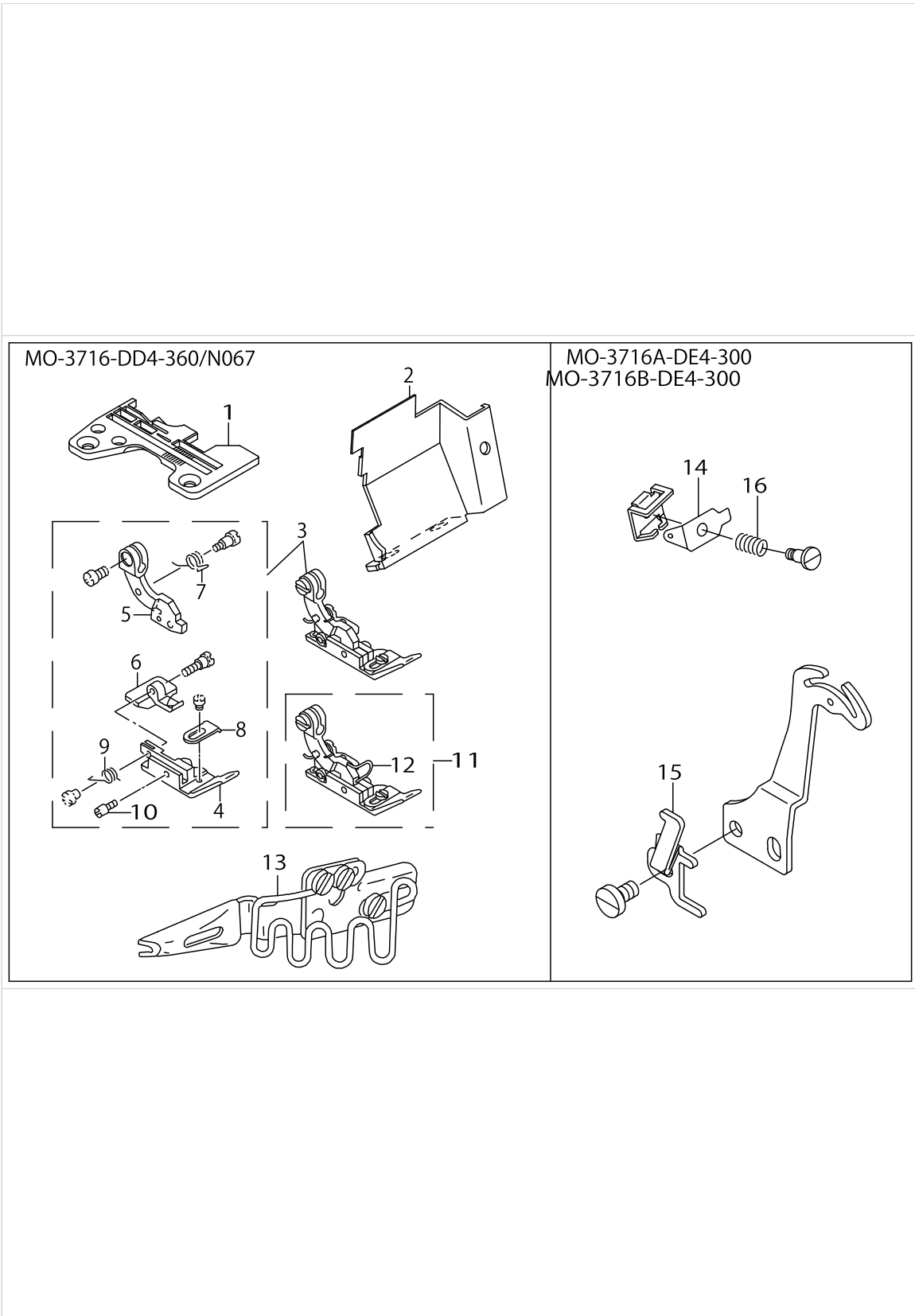
## MO-3700 SUBCLASSES (8)

No.	Parts No.	Parts name	Remarks	Level	Cons	Qty
1	R4612J0FD0A	THROAT PLATE				1
2	12150306	NEEDLE CLAMP, CHAIN LOOPER				1
3	12170908	MAIN FEED DOG				1
4	12173407	DIFFERENTIAL FEED DOG				1
5	12154852	PRESSER FOOT ASM.				1
6	12163309	PRESSER FOOT		*		1
7	11991205	REAR PRESSER FOOT		*		1
8	11991015	PRESSER FOOT HINGE		*		1
9	12168100	CLOTH GUIDE		*		1
10	B151581600B	PRESSER FOOT ARM SPRING B		*		1
11	11993508	PRESSER FOOT HINGE PIN		*		1
12	11991304	SPRING		*		1
13	11930807	HINGE PIN		*		1
14	12154860	PRESSER FOOT ASM.	FOR EXPORT			1
15	11820800	FINGER GUARD		*		1
16	11845609	KNIFE				1
17	11845807	UPPER KNIFE	FOR EXPORT			1
18	12107207	CRANKSHAFT				1
19	R4612J0FD0A	THROAT PLATE				1
20	12154852	PRESSER FOOT ASM.				1
21	12163309	PRESSER FOOT		*		1
22	11991205	REAR PRESSER FOOT		*		1
23	11991015	PRESSER FOOT HINGE		*		1
24	12168100	CLOTH GUIDE		*		1
25	B151581600B	PRESSER FOOT ARM SPRING B		*		1
26	11993508	PRESSER FOOT HINGE PIN		*		1
27	11991304	SPRING		*		1
28	11930807	HINGE PIN		*		1
29	12154860	PRESSER FOOT ASM.	FOR EXPORT			1
30	11820800	FINGER GUARD		*		1
31	11991908	UPPER LOOPER				1
32	11991601	UPPER LOOPER GUIDE COVER				1
33	11831500	UPPER LOOPER ARM B				1
34	12170908	MAIN FEED DOG				1
35	12173407	DIFFERENTIAL FEED DOG				1
36	11845807	UPPER KNIFE				1
37	12150306	NEEDLE CLAMP, CHAIN LOOPER				1
38	MDC270B1400	NEEDLE DCX27 #14				2
39	MC033600900	NEEDLE B-27 NM90	FOR JE			2



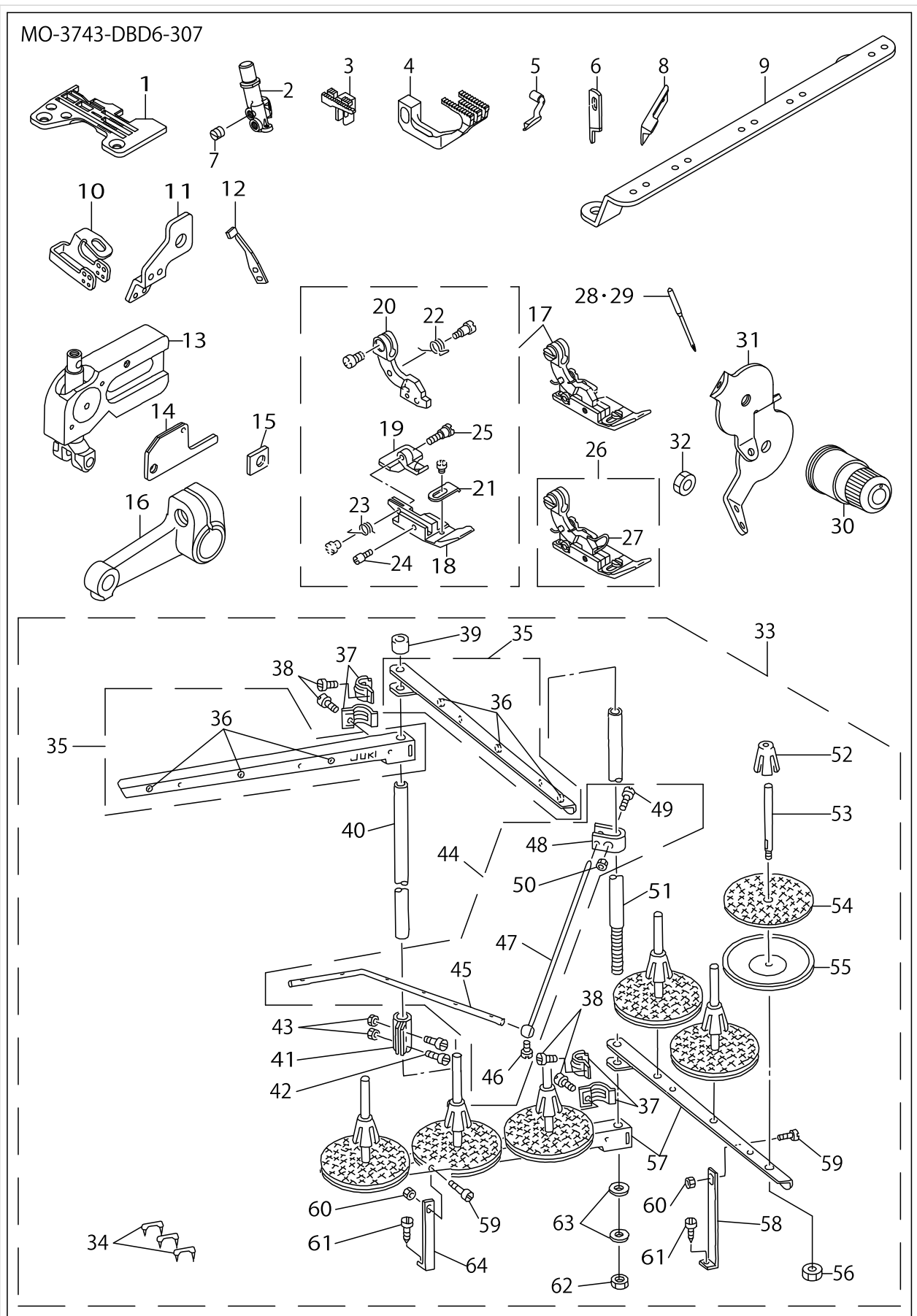
## MO-3700 SUBCLASSES (9)

No.	Parts No.	Parts name	Remarks	Level	Cons	Qty
1	12173001	DIFFERENTIAL FEED DOG				1
2	12155156	PRESSER FOOT ASM.				1
3	12163606	FRONT PRESSER FOOT		*		1
4	12165700	REAR PRESSER FOOT		*		1
5	12157103	PRESSER FOOT HINGE		*		1
6	B1515816000	PRESSER FOOT ARM SPRING		*		1
7	11930807	HINGE PIN		*		1
8	11991304	SPRING		*		1
9	12155164	PRESSER FOOT ASM.	FOR EXPORT			1
10	11820800	FINGER GUARD		*		1
11	MAM0750J0A0	PIPING FOLDER ASM. 9MM	FOR M075			1
12	MAM0760N0A0	PIPING GUIDE ASM. 13MM	FOR M076			1
13	R4612J0FD00	THROAT PLATE				1
14	12150306	NEEDLE CLAMP, CHAIN LOOPER				1
15	11884004	MAIN FEED DOG				1
16	12173605	DIFFERENTIAL FEED DOG				1
17	12155255	PRESSER FOOT ASM.				1
18	12163705	FRONT PRESSER FOOT		*		1
19	12165809	REAR PRESSER FOOT		*		1
20	11991015	PRESSER FOOT HINGE		*		1
21	12168100	CLOTH GUIDE		*		1
22	11991304	SPRING		*		1
23	11930807	HINGE PIN		*		1
24	B151581600B	PRESSER FOOT ARM SPRING B		*		1
25	11993508	PRESSER FOOT HINGE PIN		*		1
26	12155263	PRESSER FOOT ASM.	FOR EXPORT			1
27	11820800	FINGER GUARD		*		1
28	MAM0750J0A0	PIPING FOLDER ASM. 9MM	FOR M075			1
29	MAM0760N0A0	PIPING GUIDE ASM. 13MM	FOR M076			1
30	11845609	KNIFE				1
31	11845807	UPPER KNIFE	FOR EXPORT			1



## MO-3700 SUBCLASSES (10)

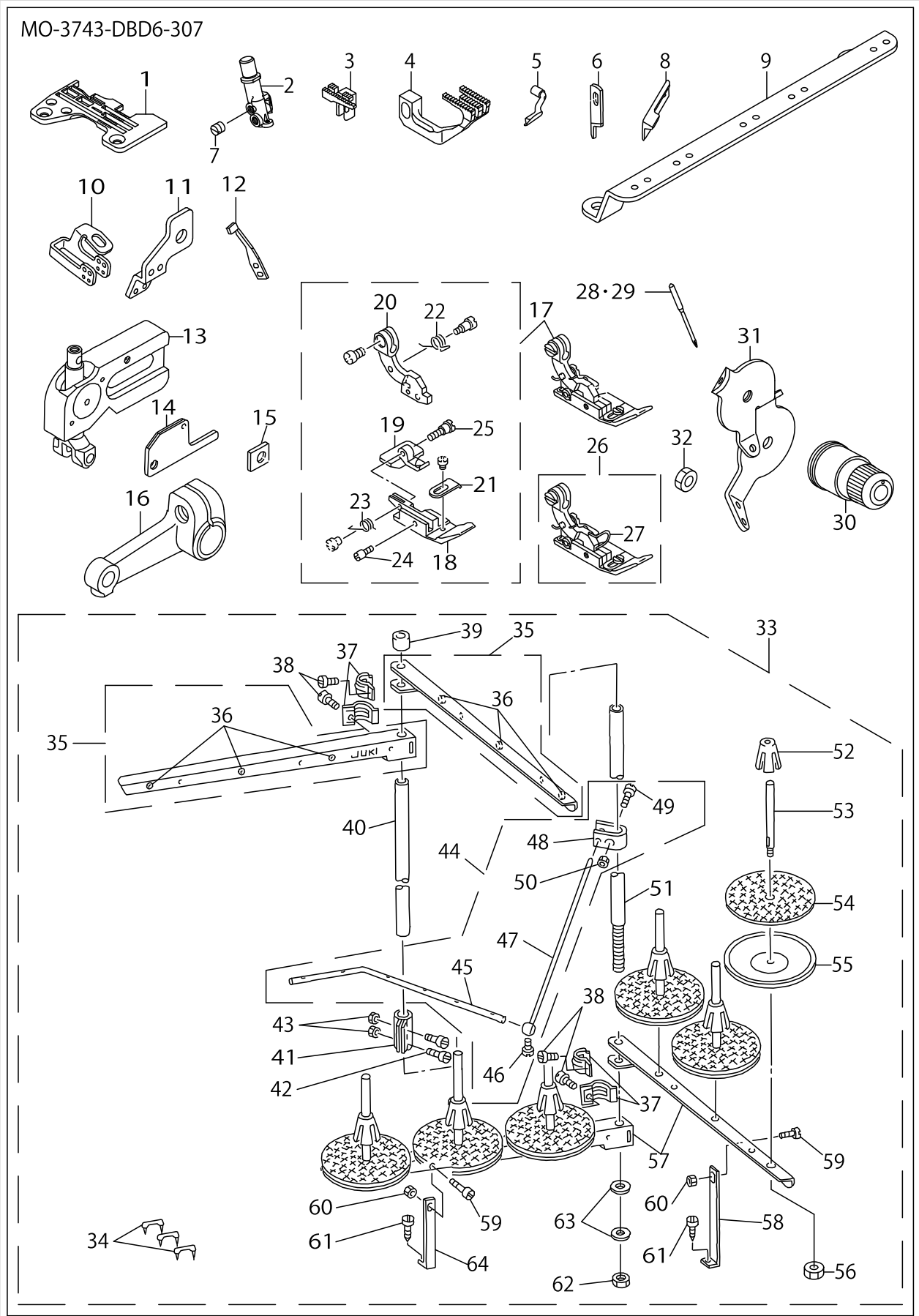
No.	Parts No.	Parts name	Remarks	Level	Cons	Qty
1	R4508J0DD0C	THROAT PLATE				1
2	12148003	CLOTH WASTE COVER				1
3	11879855	PRESSER FOOT ASM.				1
4	MAT80106N00	HINGED TYPE PRESSER FOOT		*		1
5	11872108	PRESSER FOOT HINGE		*		1
6	11875309	REAR PRESSER FOOT		*		1
7	B1515816000	PRESSER FOOT ARM SPRING		*		1
8	B1530816D00	AUXILIARY STOPPER		*		1
9	B1512816000	SPRING, FOR REAR PRESSER FOOT		*		1
10	B1510816000	HINGE PIN		*		1
11	11879863	PRESSER FOOT ASM.	FOR EXPORT			1
12	11820800	FINGER GUARD		*		1
13	MAN067000A0	TAPE OVEREDGING BINDER ASM.				1
14	12112504	NEEDLE THREAD PRESSER PLATE C				1
15	12112603	DIFFERENTIAL FEED CAM				1
16	12112702	NEEDLE THREAD PRESSER SPRING B				1



## MO-3700 SUBCLASSES (11)

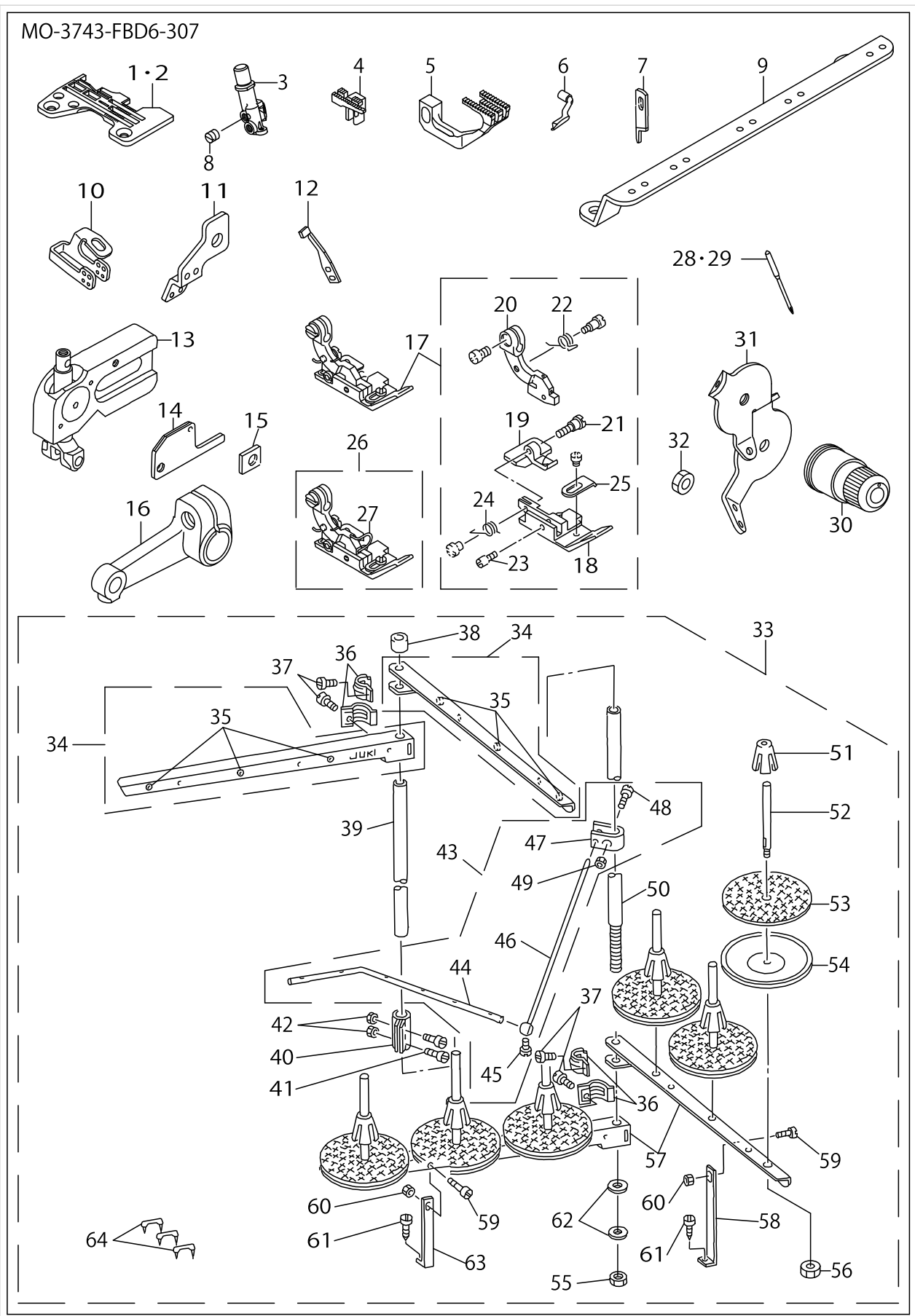
No.	Parts No.	Parts name	Remarks	Level	Cons	Qty
1	R4608J0DE01	THROAT PLATE				1
2	12150504	CHAIN LOOPER NEEDLE CLAMP				1
3	11882305	MAIN FEED DOG				1
4	12173308	DIFFERENTIAL FEED DOG				1
5	12176004	UPPER LOOPER				1
6	11845609	KNIFE				1
7	SS8080310TP	SCREW 1/8-44 L=2.8				1
8	11845807	UPPER KNIFE	FOR EXPORT			1
9	12255006	THREAD GUIDE				1
10	12146403	NEEDLE THREAD GUIDE, 3-NEEDLE				1
11	12111902	TAKE-UP LEVER GUIDE, 2-NEEDLE				1
12	11999406	NEEDLE HOLDER				1
13	12254256	UPPER LOOPER GUIDE B ASM.				1
14	B251570400B	UPPER LOOPER GUIDE COVER B				1
15	11831807	GAUGE				1
16	11831500	UPPER LOOPER ARM B				1
17	11877958	PRESSER FOOT ASM.				1
18	B1507843D00	PRESSER FOOT		*		1
19	11875408	REAR PRESSER FOOT		*		1
20	11872108	PRESSER FOOT HINGE		*		1
21	B1530816D00	AUXILIARY STOPPER		*		1
22	B1515816000	PRESSER FOOT ARM SPRING		*		1
23	B1512816000	SPRING, FOR REAR PRESSER FOOT		*		1
24	B1510816000	HINGE PIN		*		1
25	B1511816000	HINGE SCREW		*		1
26	11877966	PRESSER FOOT ASM.	FOR EXPORT			1
27	11820800	FINGER GUARD		*		1
28	MDC270B1100	NEEDLE DCX27 #11				1
29	MC033600750	NEEDLE B-27 NM75	FOR JE			1
30	12255352	THREAD TENSION SPRING JUNCTION				1
31	12255105	TENSION DISK THREAD GUIDE.				1
32	NS6110310SP	NUT 11/64-40				1
33	11969854	THREAD STAND ASM.				1
34	MAO11532000	CORD STAPLE		*		3
35	11969565	SPOOL REST ARM A ASM.		*		2
36	B3319704L00	THREAD GUIDE		*		6
37	B3318704L00A	THREAD GUIDE ARM JOINT		*		4
38	SM6061610SC	SCREW M6 L=16		*		4
39	B3311704000	SPOOL REST ROD CAP		*		1
40	11185204	SPOOL REST ROD,UPPER		*		1
41	B3305704000A	SPOOL REST ROD JOINT		*		1
42	SM4051405SE	SCREW M5 L=14		*		2
43	NM6050001SE	NUT M5		*		2
44	B33098430A0	THREAD GUIDE ARM ASM.		*		1
45	B3311843000	LOWER THREAD GUIDE		*		1
46	SS7110540SP	SCREW 11/64-40 L=5		*		1
47	B3309704000	THREAD GUIDE ARM		*		1





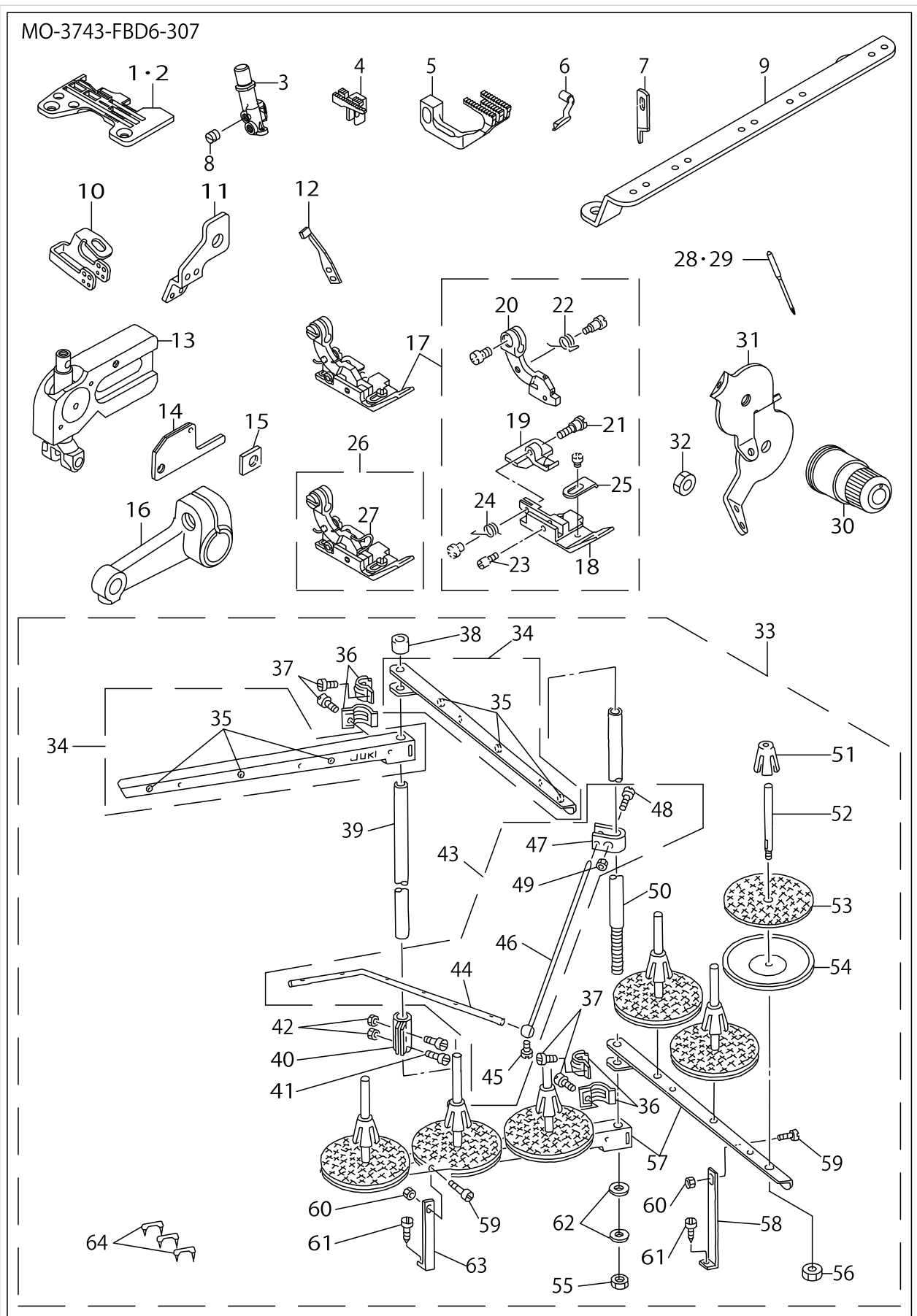
## MO-3700 SUBCLASSES (11)

No.	Parts No.	Parts name	Remarks	Level	Cons	Qty
48	B3304704000A	THREAD GUIDE ARM HOLDER		*		1
49	SM6053000SE	SCREW M5X0.8 L=30		*		1
50	NM6050001SE	NUT M5		*		1
51	11185105	SPOOL REST ROD,LOWER		*		1
52	11185501	SPOOL RETAINER		*		6
53	B3320704L00A	SPOOL PIN		*		6
54	B3311012000	SPOOL REST CUSHION		*		6
55	11966504	SPOOL REST		*		6
56	NM6050001SE	NUT M5		*		6
57	11969508	SPOOL REST ARM A		*		2
58	B3321704L0B	SPOOL REST ARM SUPPORT, B		*		1
59	SM4061201SE	SCREW M6 L=12		*		2
60	NM6060001SE	NUT M6		*		2
61	SK3382001SE	SCREW D=3.8 L=20		*		2
62	B3317704000	NUT		*		2
63	WP1612616SE	WASHER 16X30X2.6		*		2
64	B3321704L00	SPOOL REST ARM SUPPORT, A		*		1



## MO-3700 SUBCLASSES (12)

No.	Parts No.	Parts name	Remarks	Level	Cons	Qty
1	R4612J0DE03	NEEDLE PLATE	FOR EXPORT			1
2	R4608J0DE01	THROAT PLATE				1
3	12150603	CHAIN LOOPER NEEDLE CLAMP				1
4	11884004	MAIN FEED DOG				1
5	12173308	DIFFERENTIAL FEED DOG				1
6	12176004	UPPER LOOPER				1
7	11845609	KNIFE				1
8	SS8080310TP	SCREW 1/8-44 L=2.8				1
9	12255006	THREAD GUIDE				1
10	12146403	NEEDLE THREAD GUIDE, 3-NEEDLE				1
11	12112801	TAKE-UP LEVER GUIDE				1
12	11999406	NEEDLE HOLDER				1
13	12254256	UPPER LOOPER GUIDE B ASM.				1
14	B251570400B	UPPER LOOPER GUIDE COVER B				1
15	11831807	GAUGE				1
16	11831500	UPPER LOOPER ARM B				1
17	11878055	PRESSER FOOT ASM.				1
18	B1507843F00	PRESSER FOOT		*		1
19	11875507	REAR PRESSER FOOT		*		1
20	11872207	PRESSER FOOT HINGE		*		1
21	B1511816000	HINGE SCREW		*		1
22	B151581600B	PRESSER FOOT ARM SPRING B		*		1
23	B1510816000	HINGE PIN		*		1
24	B1512816000	SPRING, FOR REAR PRESSER FOOT		*		1
25	B1530816D00	AUXILIARY STOPPER		*		1
26	11878063	PRESSER FOOT ASM.	FOR EXPORT			1
27	11820800	FINGER GUARD		*		1
28	MDC270B1400	NEEDLE DCX27 #14				1
29	MC033601000	NEEDLE B-27 NM100	FOR JE			1
30	12255352	THREAD TENSION SPRING JUNCTION				1
31	12255105	TENSION DISK THREAD GUIDE.				1
32	NS6110310SP	NUT 11/64-40				1
33	11969854	THREAD STAND ASM.				1
34	11969565	SPOOL REST ARM A ASM.		*		2
35	B3319704L00	THREAD GUIDE		*		6
36	B3318704L00	THREAD GUIDE ARM JOINT		*		4
37	SM6061610SC	SCREW M6 L=16		*		4
38	B3311704000	SPOOL REST ROD CAP		*		1
39	11185204	SPOOL REST ROD,UPPER		*		1
40	B3305704000A	SPOOL REST ROD JOINT		*		1
41	SM4051405SE	SCREW M5 L=14		*		2
42	NM6050001SE	NUT M5		*		2
43	B33098430A0	THREAD GUIDE ARM ASM.		*		1
44	B3311843000	LOWER THREAD GUIDE		*		1
45	SS7110540SP	SCREW 11/64-40 L=5		*		1
46	B3309704000	THREAD GUIDE ARM		*		1
47	B3304704000A	THREAD GUIDE ARM HOLDER		*		1

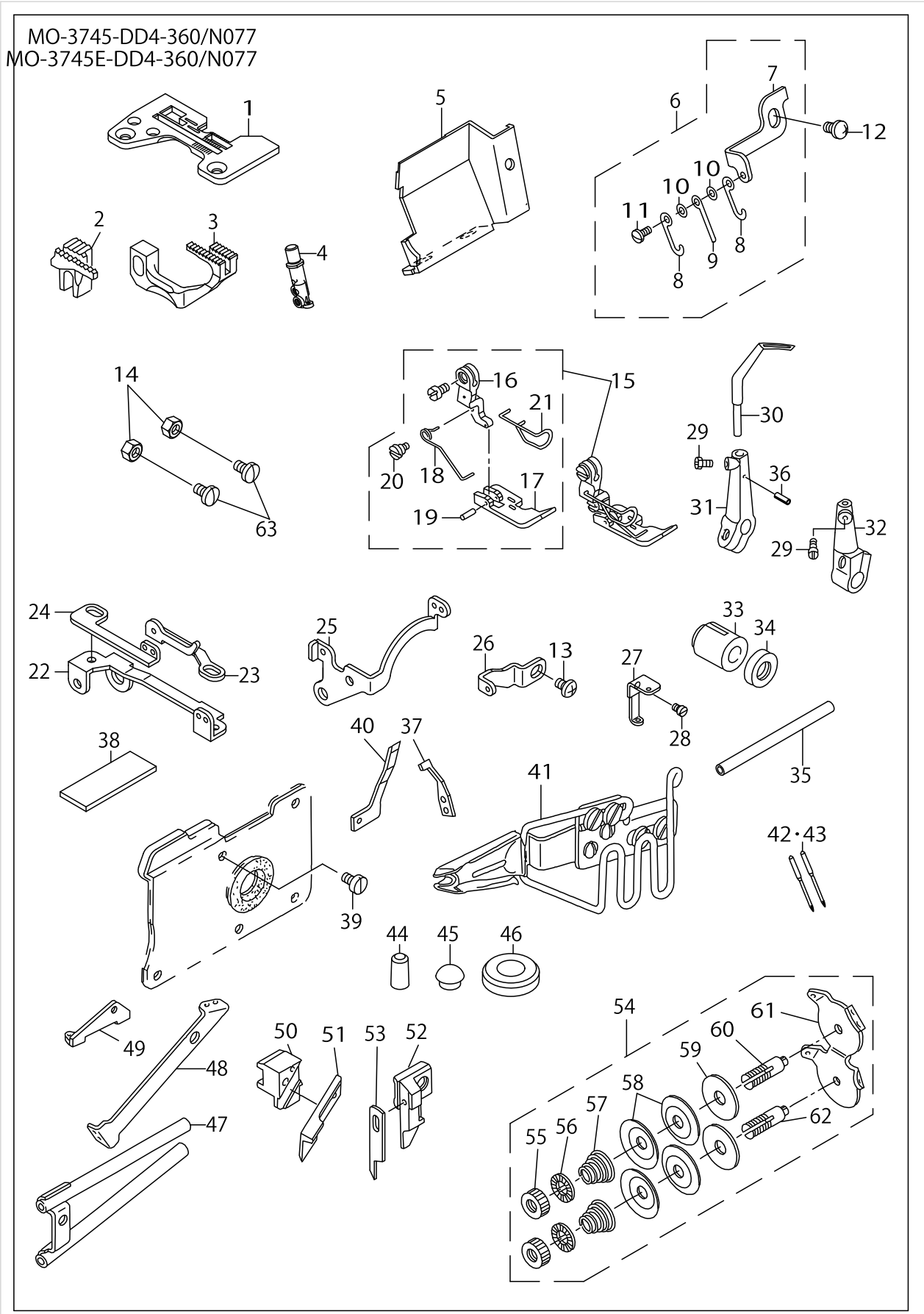


## MO-3700 SUBCLASSES (12)

No.	Parts No.	Parts name	Remarks	Level	Cons	Qty
48	SM6053000SE	SCREW M5X0.8 L=30		*		1
49	NM6050001SE	NUT M5		*		1
50	11185105	SPOOL REST ROD,LOWER		*		1
51	11185501	SPOOL RETAINER		*		6
52	B3320704L00	SPOOL PIN		*		6
53	B3311012000	SPOOL REST CUSHION		*		6
54	11966504	SPOOL REST		*		6
55	B3317704000	NUT		*		2
56	NM6050001SE	NUT M5		*		6
57	11969508	SPOOL REST ARM A		*		2
58	B3321704L0B	SPOOL REST ARM SUPPORT, B		*		1
59	SM4061201SE	SCREW M6 L=12		*		2
60	NM6060001SE	NUT M6		*		2
61	SK3382001SE	SCREW D=3.8 L=20		*		2
62	WP1612616SE	WASHER 16X30X2.6		*		2
63	B3321704L00	SPOOL REST ARM SUPPORT, A		*		1
64	MAO11532000	CORD STAPLE		*		3

MO-3700 SUBCLASSES (13)

MO-3745-DD4-360/N077  
 MO-3745E-DD4-360/N077



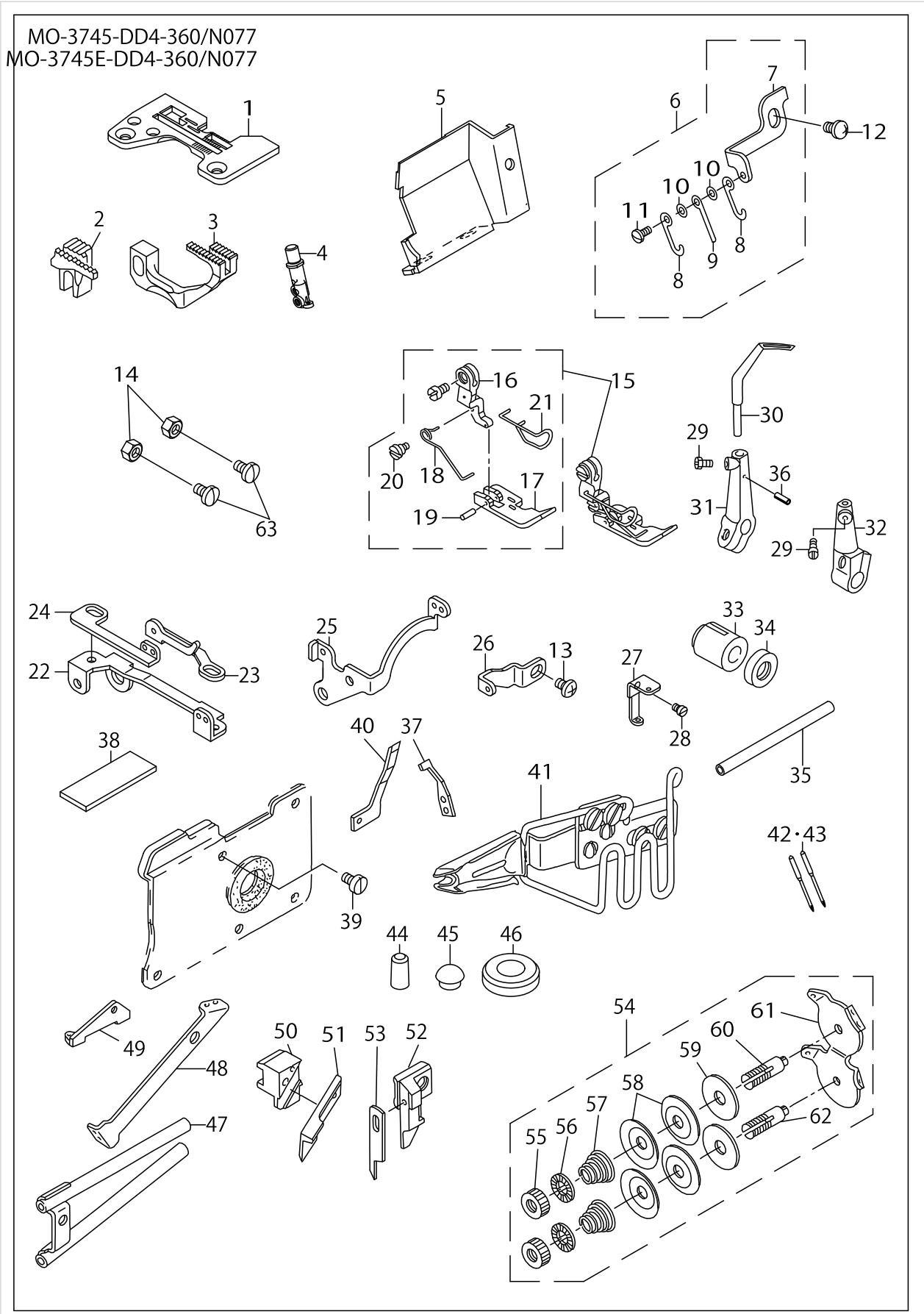
MO-3700 SUBCLASSES (13)

No.	Parts No.	Parts name	Remarks	Level	Cons	Qty
1	R4808J0DE00	THROAT PLATE				1
2	11884202	MAIN FEED DOG				1
3	12173803	DIFFERENTIAL FEED DOG				1
4	12275103	NEEDLE CLAMP CHAIN LOOPER.				1
5	12275301	CLOTH WASTE COVER				1
6	12145652	CHAIN LOOPER THREAD TAKE-UP				1
7	12145702	THREAD TAKE-UP FITTING BASE		*		1
8	B1427816000	NEEDLE THREAD TAKE-UP LEVER A		*		2
9	B1428816000	NEEDLE THREAD TAKE-UP LEVER B		*		1
10	WP0250516SD	WASHER 2.5X6X0.5		*		2
11	SS7060510SP	SCREW 3/32-56 L=4.8		*		1
12	SM4040655SP	SCREW M4 L=6				1
13	SS4110515SP	SCREW 11/64-40 L=5				1
14	NS6110420SP	NUT 11/64-40				2
15	11881661	PRESSER FOOT ASM.				1
16	11872405	PRESSER FOOT HINGE		*		1
17	11873601	PRESSER FOOT		*		1
18	11892106	PRESSER SPRING		*		1
19	B1511357000	PIN		*		1
20	SD0370401SP	HINGE SCREW D= 3.70 H= 4.0		*		1
21	11894706	FINGER GUARD		*		1
22	12146007	THREAD GUIDE BASE				1
23	12146106	THREAD GUIDE A				1
24	12146205	THREAD GUIDE B				1
25	12146304	THREAD GUIDE				1
26	12145801	CHAIN LOOPER THREAD GUIDE				1
27	12145900	NEEDLE THREAD GUIDE				1
28	SS6060340SP	SCREW 3/32-56 L= 2.5				1
29	SS9090610TP	SCREW 9/64-40 L=5.5				2
30	11999604	DOUBLE-RING LOOPER				2
31	B211784500A	CHAIN LOOPER SUPPORT ARM A				1
32	B211784500B	CHAIN LOOPER SUPPORT ARM B				1
33	B2110845000	BUSHING, FRONT				1
34	B2121845000	OIL SEAL				1
35	B2109816000	CHAIN LOOPER SHAFT				1
36	PS0200062KH	SPRING PIN 2X6				1
37	11891009	NEEDLE GUARD				1
38	B2528845000	CHIP GUARD PLATE				1
39	SS6090630SP	SCREW 9/64-40 L=6				1
40	11890902	NEEDLE GUARD				1
41	MAN0770F0A0	TOP CENTER PLAIT BINDER				1
42	MDC270B1400	NEEDLE DCX27 #14				2
43	MC033600900	NEEDLE B-27 NM90	FOR JE			2
44	TA0290601M0	PLUG D=2.9X3.2 L=6				1
45	TA0570301M0	PLUG D=5.7X6.1 L=3				1
46	TA1701002R0	RUBBER PLUG				1
47	11893054	LOOPER THREAD GUIDE TUBE ASM.				1



MO-3700 SUBCLASSES (13)

MO-3745-DD4-360/N077  
 MO-3745E-DD4-360/N077



## MO-3700 SUBCLASSES (13)

No.	Parts No.	Parts name	Remarks	Level	Cons	Qty
48	11893104	LOOPER THREAD GUIDE TUBE GUIDE				1
49	B240284500B	LOOPER THREAD GUIDE TUBE GUIDE	FOR T039,T040			1
50	11896305	UPPER KNIFE SUPPORT	FOR EXPORT			1
51	11845807	UPPER KNIFE	FOR EXPORT			1
52	11896206	UPPER KNIFE SUPPORT	FOR JAPAN			1
53	11845609	KNIFE	FOR JAPAN			1
54	11892957	TENSION CONTROLLER ASM.				1
55	B2314019000	TENSION POST NUT		*		2
56	B3120125000	ROTATING STOPPER		*		2
57	B2017372000	TENSION SPRING NO.1		*		2
58	B3126012000	THREAD TENSION DISK		*		4
59	B3120352000	THREAD TENSION SPRING FELT		*		2
60	11550803	THREAD TENSION POST		*		1
61	11892809	THREAD GUIDE		*		1
62	11892908	THREAD TENSION POST		*		1
63	SS7110710SL	SCREW 11/64-40 L=7.0				2



## HOW TO MAKE USE OF THIS PARTS LIST

### 1.Explanation of codes

1)"\*"mark.....means this part is changed from the previous parts book.

As to the details of the change, refer to the "List for information of change".

2)"#01".....refer to "Note" explanation at bottom of page.

### 2.Codes on the "Qty" column

- Each numeral indicates the number of parts required.
- "0.1" and "2.5" indicate the length (in meters) of the respective parts.

3.Parentheses mean that the corresponding part is a subpart that constructs an assembly part.

4.Dotted lines on the Figures indicate assembly parts.

### 1."注記"欄の記号説明

1) "\*"印.....前回のパーツブックに比較して今回変更された部品を意味します。

変更内容は、"変更情報リスト"を参照してください。

2) "#01".....ページ下の"注記"の説明を参照してください。

2.数量欄の数字は、個数を表し、0.1、2.5等の数値は、長さ（単位メートル）を表します。

3.数量欄の（ ）は、組部品を構成している子部品であることを意味します。

4.イラストページの-----枠は、組構成であることを意味します。

# NUMERICAL INDEX OF PARTS

PART NO	PAGE	REF NO.	PART NO	PAGE	REF NO.	PART NO	PAGE	REF NO.
11185105	24	51	11872405	30	16	11969854	22	33
11185105	28	50	11873601	30	17	11969854	26	33
11185204	22	40	11875309	20	6	11987708	4	12
11185204	26	39	11875408	22	19	11991015	10	4
11185501	24	52	11875507	26	19	11991015	16	23
11185501	28	51	11877958	22	17	11991015	18	20
11550803	32	60	11877966	22	26	11991114	10	11
11565900	12	20	11878055	26	17	11991171	10	3
11566502	12	21	11878063	26	26	11991189	10	13
11820800	10	14	11879855	20	3	11991205	10	7
11820800	14	30	11879863	20	11	11991205	16	22
11820800	16	30	11881661	30	15	11991304	10	8
11820800	18	27	11882305	22	3	11991304	14	27
11820800	20	12	11882909	4	7	11991304	16	27
11820800	22	27	11883006	8	17	11991304	18	22
11820800	26	27	11883006	10	18	11991601	10	16
11831500	10	17	11884004	4	23	11991601	12	14
11831500	12	15	11884004	6	16	11991601	16	32
11831500	16	33	11884004	18	15	11991908	10	15
11831500	22	16	11884004	26	4	11991908	16	31
11831500	26	16	11884202	30	2	11993508	10	10
11831807	22	15	11884400	8	3	11993508	14	26
11831807	26	15	11888609	2	1	11993508	16	26
11845609	4	25	11890902	30	40	11993508	18	25
11845609	6	25	11891009	30	37	11999208	8	16
11845609	8	28	11892106	30	18	11999406	22	12
11845609	10	20	11892809	32	61	11999406	26	12
11845609	14	31	11892908	32	62	11999604	30	30
11845609	16	16	11892957	32	54	11999802	12	18
11845609	18	30	11893054	30	47	12004909	12	19
11845609	22	6	11893104	32	48	12107207	10	1
11845609	26	7	11894706	30	21	12107207	16	18
11845609	32	53	11896206	32	52	12107306	12	1
11845807	4	26	11896305	32	50	12111902	22	11
11845807	6	26	11930708	12	8	12112504	20	14
11845807	8	29	11930807	10	9	12112603	20	15
11845807	10	21	11930807	14	28	12112702	20	16
11845807	14	32	11930807	16	28	12112801	12	24
11845807	16	36	11930807	18	23	12112801	26	11
11845807	18	31	11966504	24	55	12133500	12	23
11845807	22	8	11966504	28	54	12133682	12	22
11845807	32	51	11969508	24	57	12145652	30	6
11872108	20	5	11969508	28	57	12145702	30	7
11872108	22	20	11969565	22	35	12145801	30	26
11872207	26	20	11969565	26	34	12145900	30	27

## NUMERICAL INDEX OF PARTS

PART NO	PAGE	REF NO.	PART NO	PAGE	REF NO.	PART NO	PAGE	REF NO.
12146007	30	22	12162608	8	6	12173407	16	35
12146106	30	23	12162707	4	28	12173506	8	18
12146205	30	24	12162707	6	19	12173506	10	19
12146304	30	25	12162707	8	20	12173605	18	16
12146403	22	10	12163101	14	6	12173803	30	3
12146403	26	10	12163200	14	21	12174207	12	17
12148003	20	2	12163309	16	21	12174306	2	15
12150306	4	22	12163606	18	3	12176004	22	5
12150306	6	15	12163705	18	18	12176004	26	6
12150306	8	15	12164000	12	7	12176202	12	13
12150306	10	22	12165205	4	16	12254256	22	13
12150306	16	37	12165205	8	7	12254256	26	13
12150306	18	14	12165304	4	29	12254850	2	4
12150504	22	2	12165304	6	20	12255006	22	9
12150603	26	3	12165304	8	21	12255006	26	9
12150702	12	25	12165502	14	22	12255105	22	31
12154159	4	14	12165700	18	4	12255105	26	31
12154159	8	5	12165809	18	19	12255352	22	30
12154167	4	19	12165908	12	5	12255352	26	30
12154167	8	12	12168001	4	31	12273900	12	28
12154258	4	27	12168001	6	22	12275103	30	4
12154258	6	18	12168001	8	23	12275301	30	5
12154258	8	19	12168100	14	23	B1427816000	30	8
12154266	4	32	12168100	16	24	B1428816000	30	9
12154266	6	23	12168100	18	21	B1507843D00	22	18
12154266	8	24	12168209	4	33	B1507843F00	26	18
12154654	14	4	12168209	6	24	B1510816000	20	10
12154662	14	13	12168209	8	25	B1510816000	22	24
12154753	14	20	12168407	12	6	B1510816000	26	23
12154761	14	29	12168506	12	9	B1511357000	30	19
12154852	16	20	12168605	12	10	B1511816000	22	25
12154860	16	29	12168803	12	12	B1511816000	26	21
12155156	18	2	12170700	14	2	B1512816000	20	9
12155164	18	9	12170809	14	18	B1512816000	22	23
12155255	18	17	12170908	16	34	B1512816000	26	24
12155263	18	26	12171104	12	16	B1514816000	10	6
12155552	12	3	12171302	2	14	B1515816000	14	24
12155560	12	11	12172904	14	3	B1515816000	18	6
12157004	4	30	12173001	18	1	B1515816000	20	7
12157004	6	21	12173100	6	17	B1515816000	22	22
12157004	8	22	12173209	4	8	B151581600B	10	5
12157103	14	25	12173308	4	24	B151581600B	16	25
12157103	18	5	12173308	22	4	B151581600B	18	24
12157319	12	4	12173308	26	5	B151581600B	26	22
12162608	4	15	12173407	14	19	B1530816D00	10	12

NUMERICAL INDEX OF PARTS

PART NO	PAGE	REF NO.	PART NO	PAGE	REF NO.	PART NO	PAGE	REF NO.
B1530816D00	20	8	MAN067000A0	20	13	R4612J0DE03	26	1·2
B1530816D00	22	21	MAN0770F0A0	30	41	R4612J0FD00	4	21
B1530816D00	26	25	MAO11532000	22	34	R4612J0FD00	18	13
B2017372000	32	57	MAO11532000	28	64	R4612J0FD0A	16	19
B2109816000	30	35	MAT80106N00	20	4	R4612J0FF00	10	2
B2110845000	30	33	MC033600750	22	28·29	R4612J0FG00	8	14
B211784500A	30	31	MC033600900	16	39	R4612J0FK00	12	2
B211784500B	30	32	MC033600900	30	42·43	R4808J0DE00	30	1
B2121845000	30	34	MC033601000	8	26·27	SD0370401SP	30	20
B2314019000	32	55	MC033601000	10	24	SK3382001SE	24	61
B240284500B	32	49	MC033601000	26	28·29	SK3382001SE	28	61
B251570400B	22	14	MC033601300	12	27	SM4040655SP	30	12
B251570400B	26	14	MDC270B1100	22	28·29	SM4051405SE	22	42
B2528845000	30	38	MDC270B1400	16	38	SM4051405SE	26	41
B3120125000	32	56	MDC270B1400	26	28·29	SM4061201SE	24	59
B3120352000	32	59	MDC270B1400	30	42·43	SM4061201SE	28	59
B3126012000	32	58	MDC270B1600	8	26·27	SM6053000SE	24	49
B3304704000A	24	48	MDC270B1600	10	23	SM6053000SE	28	48
B3304704000A	26	47	MDC270B2100	12	26	SM6061610SC	22	38
B3305704000A	22	41	NM6050001SE	22	56	SM6061610SC	26	37
B3305704000A	26	40	NM6050001SE	24	56	SS4110515SP	30	13
B3309704000	22	47	NM6050001SE	26	56	SS6060340SP	30	28
B3309704000	26	46	NM6050001SE	28	56	SS6090630SP	2	2
B33098430A0	22	44	NM6060001SE	24	60	SS6090630SP	30	39
B33098430A0	26	43	NM6060001SE	28	60	SS7060510SP	30	11
B3311012000	24	54	NS6110310SP	22	32	SS7110540SP	22	46
B3311012000	28	53	NS6110310SP	26	32	SS7110540SP	26	45
B3311704000	22	39	NS6110420SP	30	14	SS7110710SL	2	3
B3311704000	26	38	PS0200062KH	30	36	SS7110710SL	32	63
B3311843000	22	45	R4508J0DD00	2	5	SS8080310TP	22	7
B3311843000	26	44	R4508J0DD0C	20	1	SS8080310TP	26	8
B3317704000	24	62	R4508J0DD0E	2	7	SS9090610TP	30	29
B3317704000	28	55	R4508J0ED0B	14	1	TA0290601M0	30	44
B3318704L00	26	36	R4508J0ED0D	2	10	TA0570301M0	30	45
B3318704L00A	22	37	R4508J0FD00	2	6	TA1701002R0	30	46
B3319704L00	22	36	R4508J0FD00	6	1	WP0250516SD	30	10
B3319704L00	26	35	R4508J0FD0B	2	13	WP1612616SE	24	63
B3320704L00	28	52	R4512J0GD00	6	14	WP1612616SE	28	62
B3320704L00A	24	53	R4608J0DD00	4	1			
B3321704L00	24	64	R4608J0DE01	22	1			
B3321704L00	28	63	R4608J0DE01	26	1·2			
B3321704L0B	24	58	R4608J0ED00	4	6			
B3321704L0B	28	58	R4608J0FD00	4	11			
MAM0750J0A0	18	28	R4608J0FD0A	14	17			
MAM0760N0A0	18	29	R4608J0FG00	8	1			