

MODEL : V045/V046

List No : 0973-02

# PARTS LIST

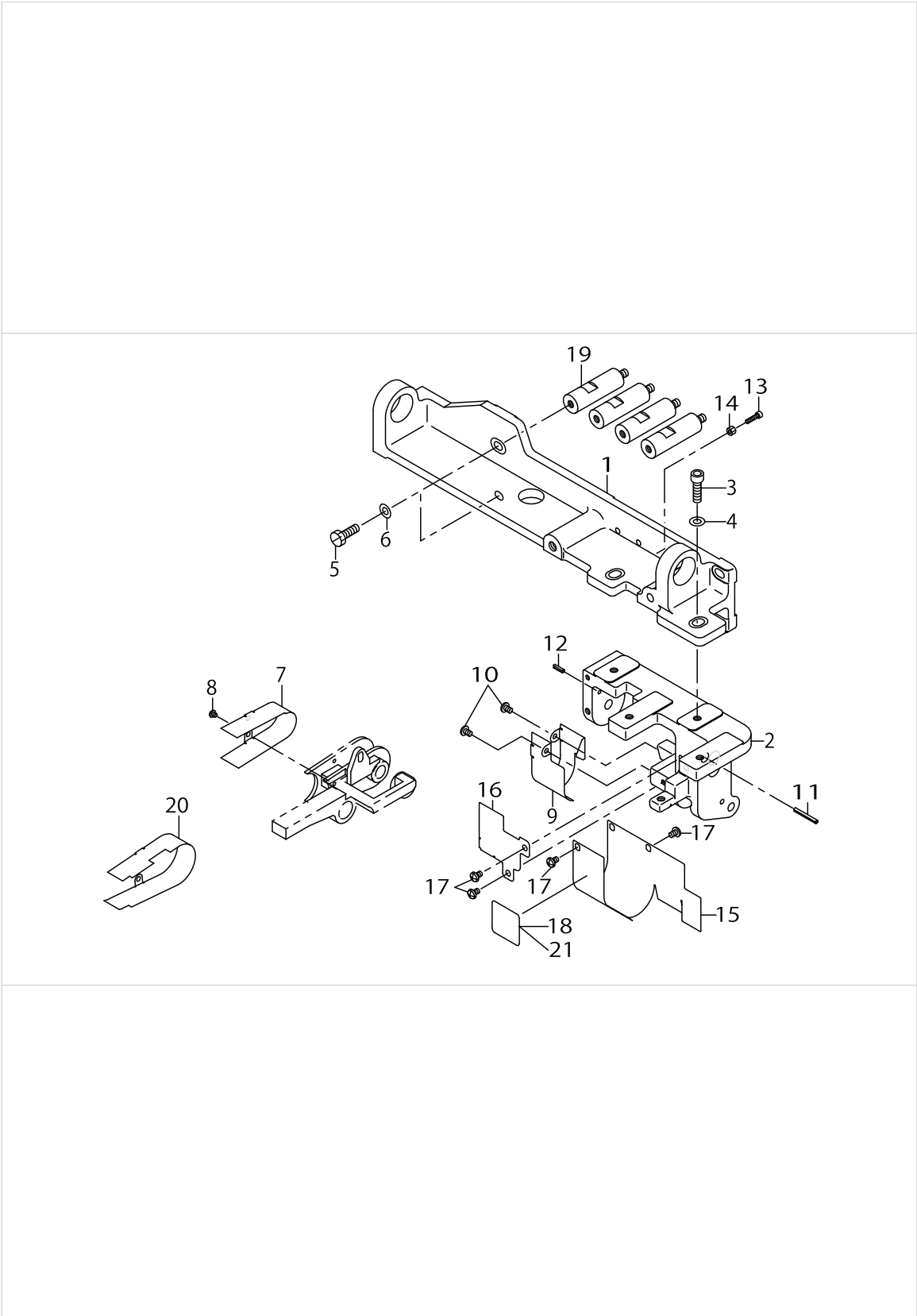
Published:09/10/2017

## CONTENTS

---

FRAME & COVER COMPONENTS.....	1
DRIVE COMPONENTS .....	3
CLUTCH COMPONENTS .....	5
ROLLER DRIVE COMPONENTS.....	7
PRESSER COMPONENTS (V045 MODEL).....	9
PRESSER COMPONENTS (V046 MODEL).....	11
LOWER ROLLER COMPONENTS (V046 MODEL) .....	13
EXCHANGING PARTS AT USING VO45 UNIT (FOR MS-1190AEC P190M).....	15
EXCHANGING PARTS AT USING VO45 UNIT (FOR MS-126CPAE1260AEC P261M).....	17
TABLE OF V045 EXCHANGING GAUGE PARTS (FOR MS-1190AEC P190M) .....	19
TABLE OF V045 EXCHANGING GAUGE PARTS (FOR MS-1261AEC P26COAE1261M) .....	21
HOW TO MAKE USE OF THIS PARTS LIST .....	25

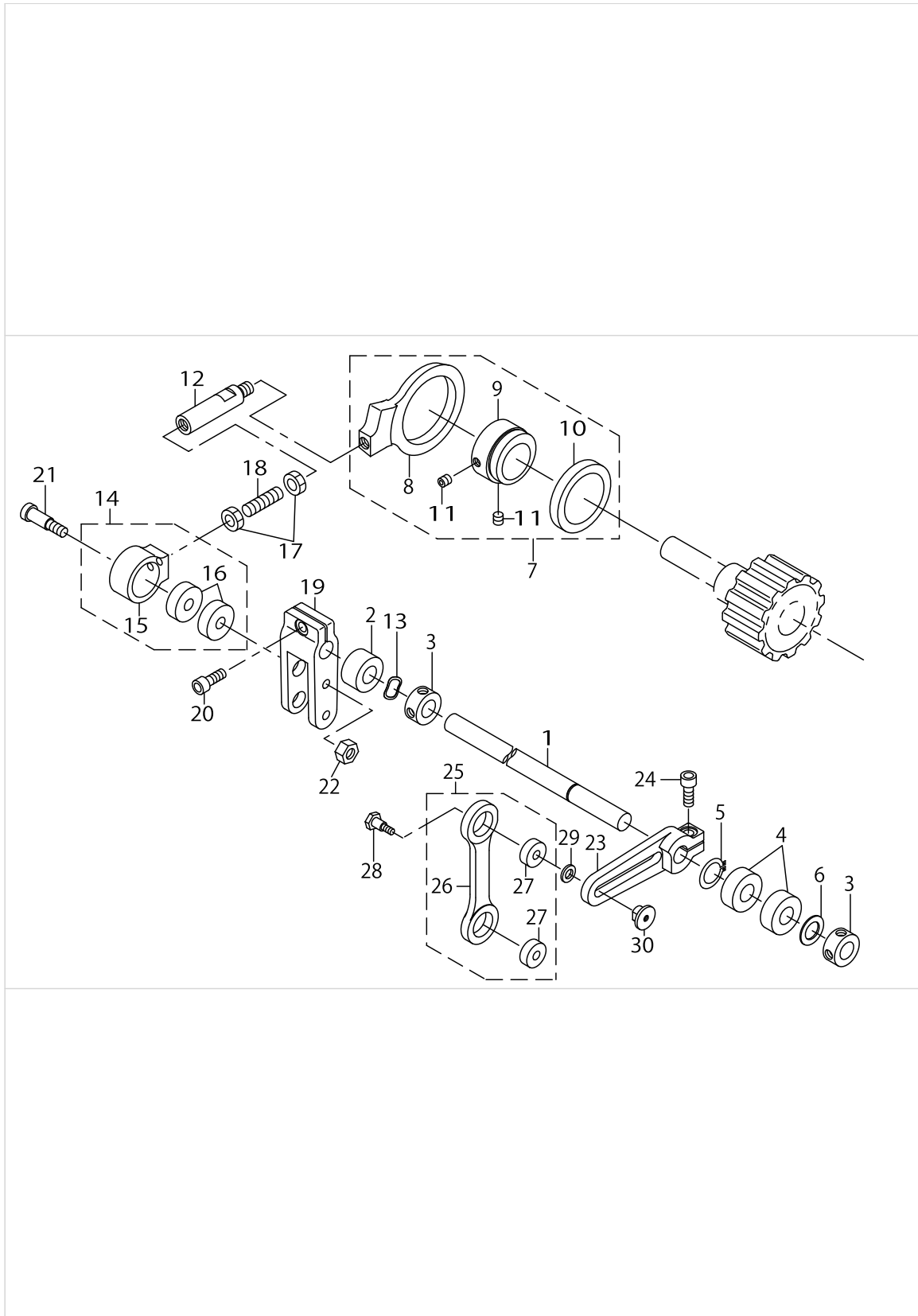
FRAME & COVER COMPONENTS



FRAME & COVER COMPONENTS

No.	Parts No.	Parts name	Remarks	Level	Cons	Qty
1	MAV04501000	MAIN BASE				1
2	MAV04502000	CLUTCH BASE				1
3	SM6062002TP	SCREW M6 L=20				2
4	WP0641600SC	WASHEW 6.4X12.5X1.6				2
5	SM9061850SC	SCREW M6 L=18				4
6	WP0641600SC	WASHEW 6.4X12.5X1.6				4
7	MAV04503000	ROLLER COVER	FOR V045			1
8	SM5030355SE	SCREW				2
9	MAV04504000	INTERMEDIATE PULLEY COVER				1
10	SM5040655SN	SCREW				3
11	PS0300242K0	SPRING PIN 3.0X24				1
12	PS0300102K0	SPRING PIN 3.0X10				1
13	SM6031202TP	SCREW M3X0.5 L=12				1
14	NM6030003SC	NUT M3				1
15	MAV04505000	CLUTCH COVER A				1
16	MAV04506000	CLUTCH COVER B				1
17	SM5040655SN	SCREW				5
18	MAV04507000	MODEL PLATE	FOR V045			1
19	MAV04611000	BASE FLOAT PIN	FOR V046			4
20	MAV04603000	ROLLER COVER	FOR V046			1
21	MAV04607000	MODEL PLATE	FOR V046			1

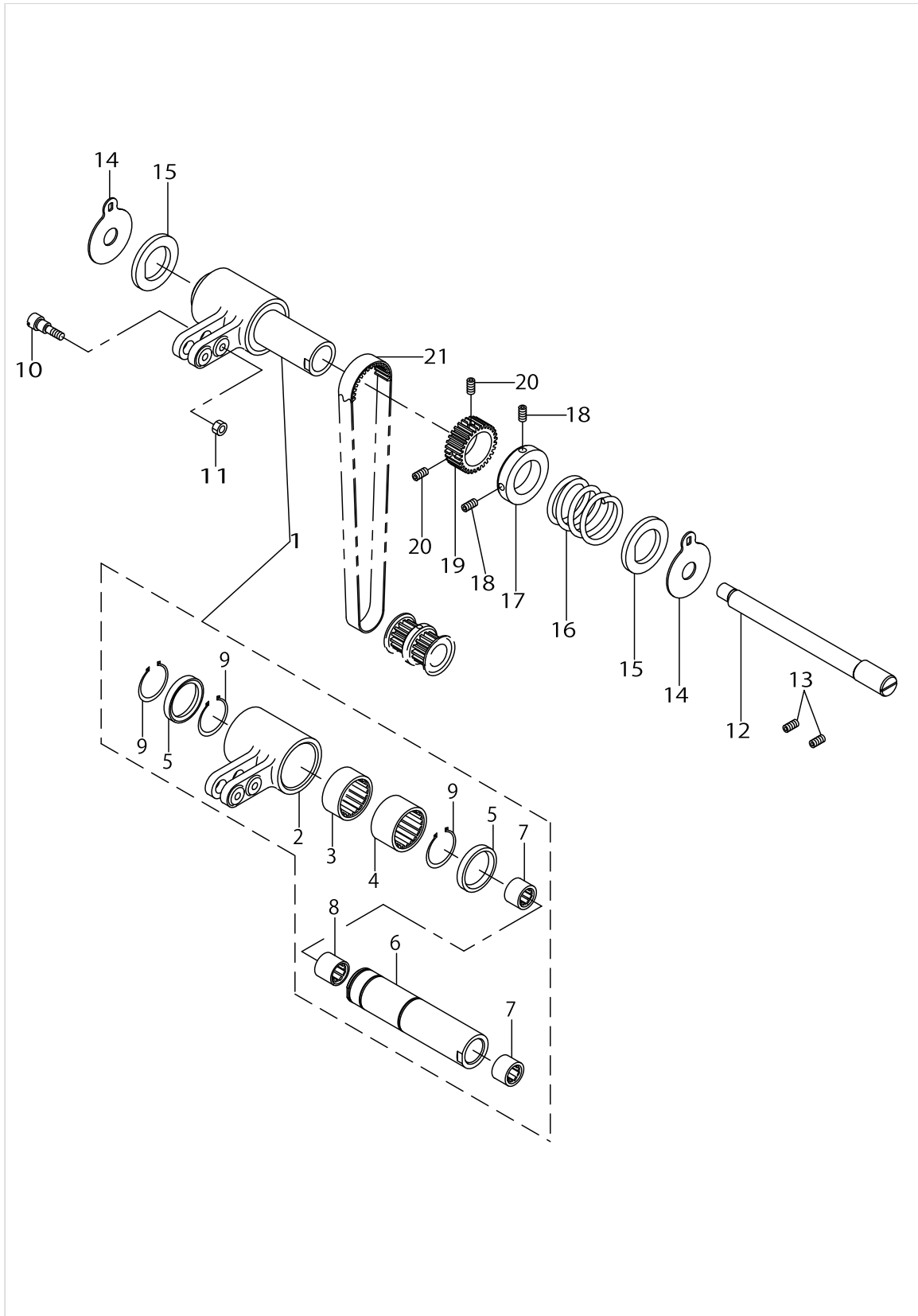
DRIVE COMPONENTS



DRIVE COMPONENTS

No.	Parts No.	Parts name	Remarks	Level	Cons	Qty
1	MAV04515000	ROCKING SHAFT				1
2	SB212000100	BEARING				1
3	CS1201010SH	THRUST COLLAR ASM. D=12 W=10				2
4	SB112000500	BEARING				2
5	RC1200001KP	C-SHAPED SNAP RING				1
6	WP1221016SP	WASHER				1
7	MAV045160B0	ROCKING CRANK				1
8	MAV04516000	ROCKING CRANK		*		1
9	MAV04517000	ECCENTRIC SHAFT		*		1
10	SB135000300	BEARING		*		1
11	SM8060602TP	SCREW M6X6		*		2
12	MAV04610000	CONNECTING ROD	FOR V046			1
13	WZ1200200KP	WAVED WASHER				1
14	MAV045180A0	ROCKING CRANK HOUSING ASM.				1
15	MAV04518000	ROCKING CRANK HOUSING		*		1
16	SB108000600	BEARING		*		2
17	NM6080003SC	NUT M8				2
18	SM8082502TP	SCREW				1
19	MAV04519000	ROCKING ROD				1
20	SM6061602TP	SCREW M6 L=16				1
21	SD0801606SH	STEP-SCREW				1
22	NM6060003SC	NUT M6				1
23	MAV04520000	ADJUSTING ROD				1
24	SM6061602TP	SCREW M6 L=16				1
25	MAV045210A0	JOINT ROD ASM.				1
26	MAV04521000	JOINT ROD		*		1
27	SB106000200	BEARING 6X17		*		2
28	SD0600756TP	STEP-SCREW				1
29	WP0641600SC	WASHEW 6.4X12.5X1.6				1
30	MAV04522000	ADJUSTING PIN				1

# CLUTCH COMPONENTS

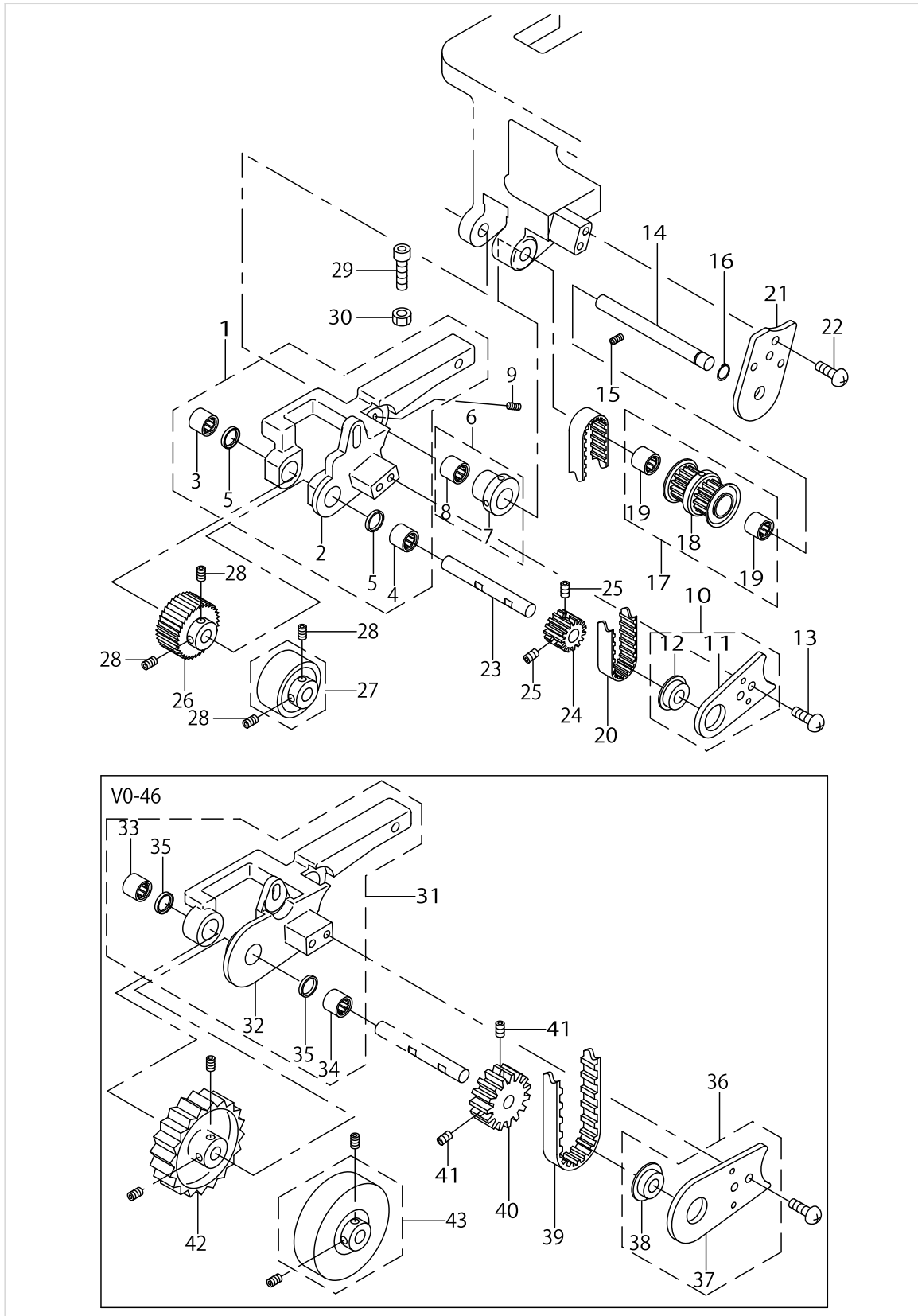


## CLUTCH COMPONENTS

No.	Parts No.	Parts name	Remarks	Level	Cons	Qty
1	MAV045250A0	CLUTCH CASE ASM.				1
2	MAV04525000	CLUTCH CASE		*		1
3	SB320000300	BALL BEARING		*		1
4	SB320000400	BALL BEARING		*		1
5	MAV04534000	CLUTCH OIL SHIEL		*		2
6	MAV04526000	CLUTCH ROCKING SHAFT		*		1
7	SB310000300	BALL BEARING		*		2
8	SB310000700	BALL BEARING		*		1
9	RC1851217KP	C-RING		*		3
10	SD0600596SH	STEP-SCREW				1
11	NM6040003SC	NUT M4				1
12	MAV04527000	CLUTCH SHAFT				1
13	SM8050602TP	SCREW M5 L=6				2
14	MAV04528000	BRAKE PLATE				2
15	MAV04529000	BRAKE WASHER				2
16	MAV04530000	BRAKE SPRING				1
17	MAV04531000	CLUTCH BRAKE COLLER				1
18	SM8040602TP	SCREW M4X0.7 L=6				2
19	MAV04532000	CLUTCH PULLEY				1
20	SM8040302TP	SETSCREW				2
21	MAV04533000	CLUTCH TIMING BELT				1



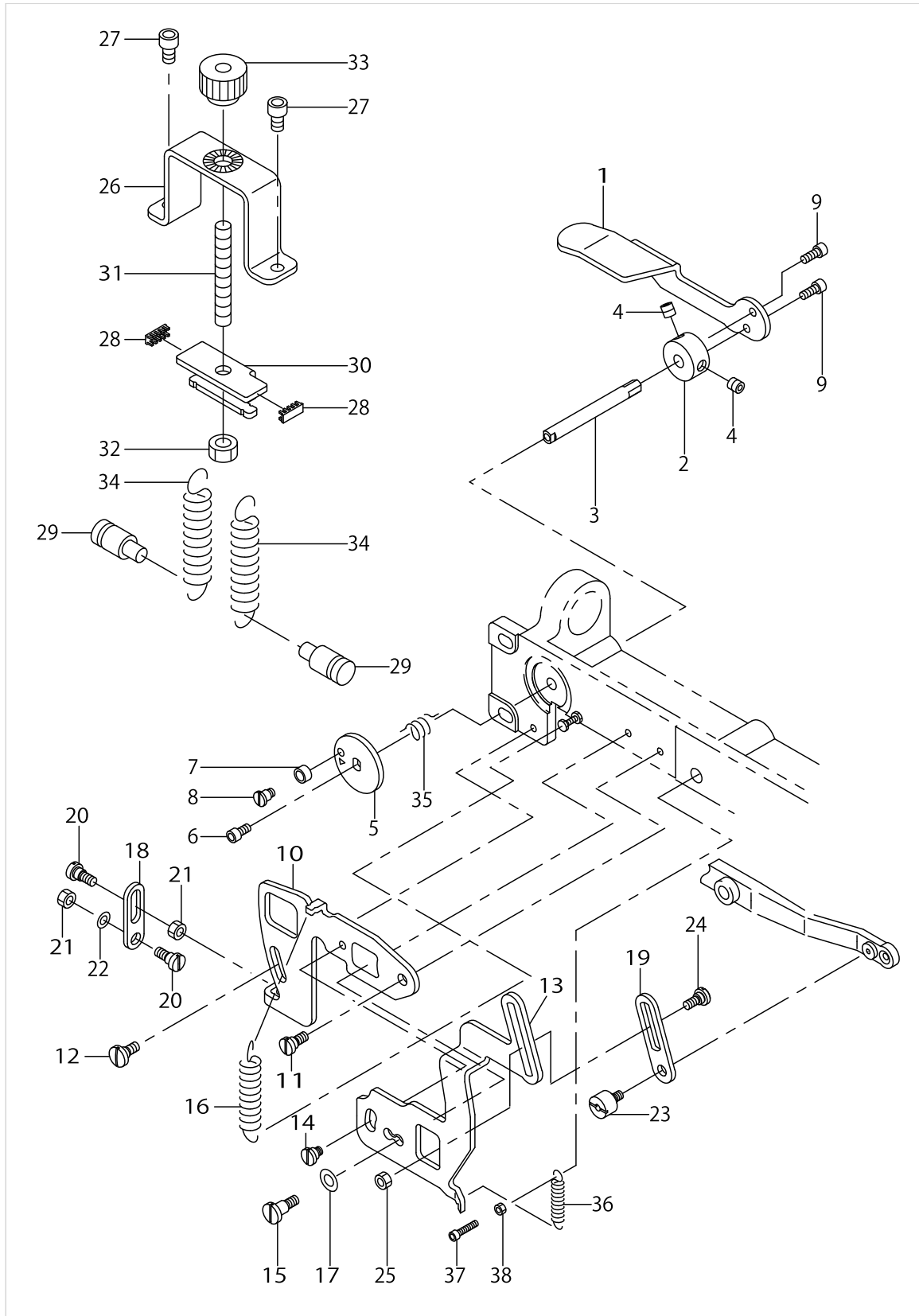
ROLLER DRIVE COMPONENTS



ROLLER DRIVE COMPONENTS

No.	Parts No.	Parts name	Remarks	Level	Cons	Qty
1	MAV045350A0	ROLLER BASE ASM.				1
2	MAV04535000	ROLLER BASE		*		1
3	SB307000500	BEARING		*		1
4	SB307000400	BEARING		*		1
5	MAV04546000	ROLLER SHAFT OIL SHIEL		*		2
6	MAV045360A0	ECCENTRIC COLLER ASM.				1
7	MAV04536000	ROLLER BASE ECCENTRIC COLLER		*		1
8	SB307000400	BEARING		*		1
9	SM8040402TP	SCREW M4X0.7 L=4				1
10	MAV045470A0	ROLLER SHAFT PLATE ASM.				1
11	MAV04547000	ROLLER SHAFT PLATE		*		1
12	SB107000100	BEARING		*		1
13	SM6040802TP	SCREW M4X0.7 L=8				2
14	MAV04537000	PULLEY SHAFT				1
15	SM8050502TP	SCREW M5 L=5				2
16	RC0650811KP	RETAINING RING				1
17	MAV045380B0	INTERMEDIATE PULLEY ASM.				1
18	MAV045380A0	INTERMEDIATE PULLEY ASM.		*		1
19	SB307000400	BEARING		*		2
20	MAV04541000	ROLLER TIMING BELT				1
21	MAV04542000	SUPPORT PLATE				1
22	SM6040802TP	SCREW M4X0.7 L=8				2
23	MAV04543000	ROLLER SHAFT				1
24	MAV04544000	ROLLER PULLEY				1
25	SM8040602TP	SCREW M4X0.7 L=6				2
26	MAV04545000	STEEL ROLLER	SELECTIVE PART			1
27	MAV045500A0	URETHANE ROLLER ASM.	SELECTIVE PART			1
28	SM8040402TP	SCREW M4X0.7 L=4				2
29	SM6062002TP	SCREW M6 L=20				1
30	NM6060003SC	NUT M6				1
31	MAV046350A0	ROLLER BASE ASM.				1
32	MAV04635000	ROLLER BASE		*		1
33	SB307000500	BEARING		*		1
34	SB307000400	BEARING		*		1
35	MAV04546000	ROLLER SHAFT OIL SHIEL		*		2
36	MAV046360A0	ROLLER SHAFT PLATE ASM.				1
37	MAV04636000	ROLLER SHAFT PLATE		*		1
38	SB107000100	BEARING		*		1
39	MAV04637000	ROLLER TIMING BELT				1
40	MAV04638000	ROLLER PULLY				1
41	SM8040802TP	SCREW M4X8				2
42	MAV04640000	STEEL ROLLER	SELECTIVE PART			1
43	MAV046410A0	URETHANE ROLLER ASM.	SELECTIVE PART			1

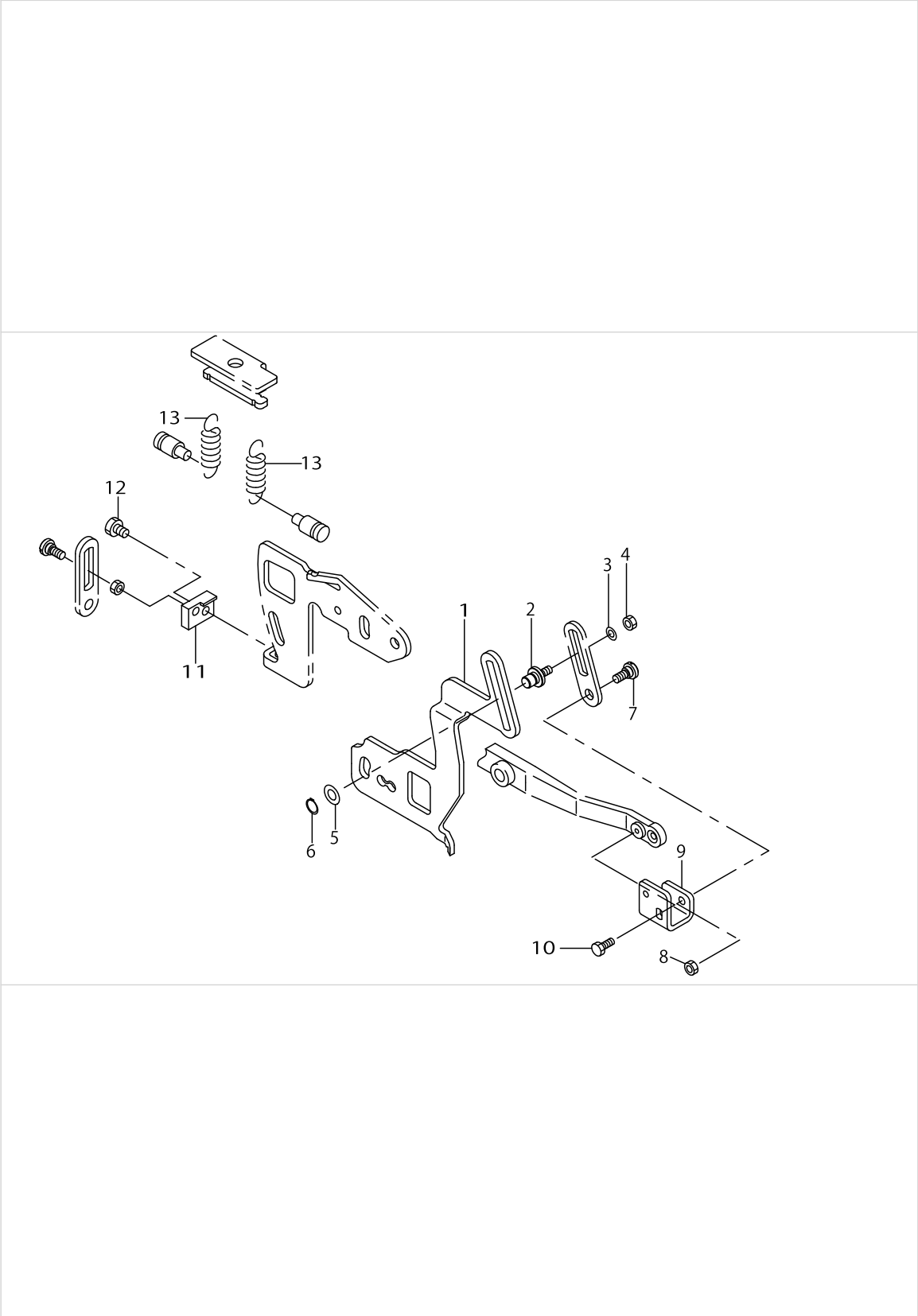
PRESSER COMPONENTS (V045 MODEL)



PRESSER COMPONENTS (V045 MODEL)

No.	Parts No.	Parts name	Remarks	Level	Cons	Qty
1	MAV04555000	PRESSER LIFTING LEVER				1
2	MAV04556000	PRESSER LIFTING LEVER COLLER				1
3	MAV04557000	PRESSER LIFTING SHAFT				1
4	SM8060602TP	SCREW M6X6				2
5	MAV04558000	PRESSER LIFTING CAM PLATE				1
6	SM6040802TP	SCREW M4X0.7 L=8				1
7	D2587L8WB00	ROLLER				1
8	SD0550451SP	HINGE SCREW				1
9	SM6041002TP	SCREW M4 L=10				2
10	MAV04559000	PRESSER LIFTING PLATE				1
11	SD0640325SP	HINGE SCREW				1
12	SD0600361SP	HINGE SCREW D=6 H=3.6				1
13	MAV04560000	PRESSER LIFTING JOINT PLATE				1
14	SD0640321TP	HINGE SCREW D=6.35 H=3.2				1
15	SD0640751SP	HINGE SCREW D= 6.35 H= 7.5				1
16	B2056781000	BLOCKING ARM SPRING				1
17	WP0651056SH	WASHER 6.5X11X1				1
18	MAV04561000	PRESSER LIFTING ROD				1
19	MAV04616000	PRESSER LIFTING LINK				1
20	SD0600402TP	HINGE SCREW D= 6 H= 4				2
21	NS6620310SP	NUT 3/16-32				2
22	WP0480856SP	WASHER 4.8X8.4X0.8				1
23	MAV04562000	KNEE LIFTER LEVER COLLER				1
24	SD0600271SP	HINGE SCREW D= 6 H= 2.7				1
25	NS6110430SP	NUT 11/64-40				1
26	MAV04564000	PRESSER LIFTING BASE				1
27	SM6061002TP	SCREW M6 L=10				2
28	MAV04565000	SPRING PLATE COVER				2
29	B1506352000	TENSION SPRING RACK B				2
30	MAV04566000	SPRING PLATE				1
31	MAV04567000	PRESSER ADJUSTING SCREW				1
32	NM6080001SC	NUT M8X1.25				1
33	MAV04568000	PRESSER ADJUSTING KNOB				1
34	MAV04569000	PRESSER SPRING				2
35	MAV04563000	PRESSER LIFTING LEVER SPRING				1
36	13515606	SPRING				1
37	SM6031402TP	SCREW				1
38	NM6030003SC	NUT M3				1

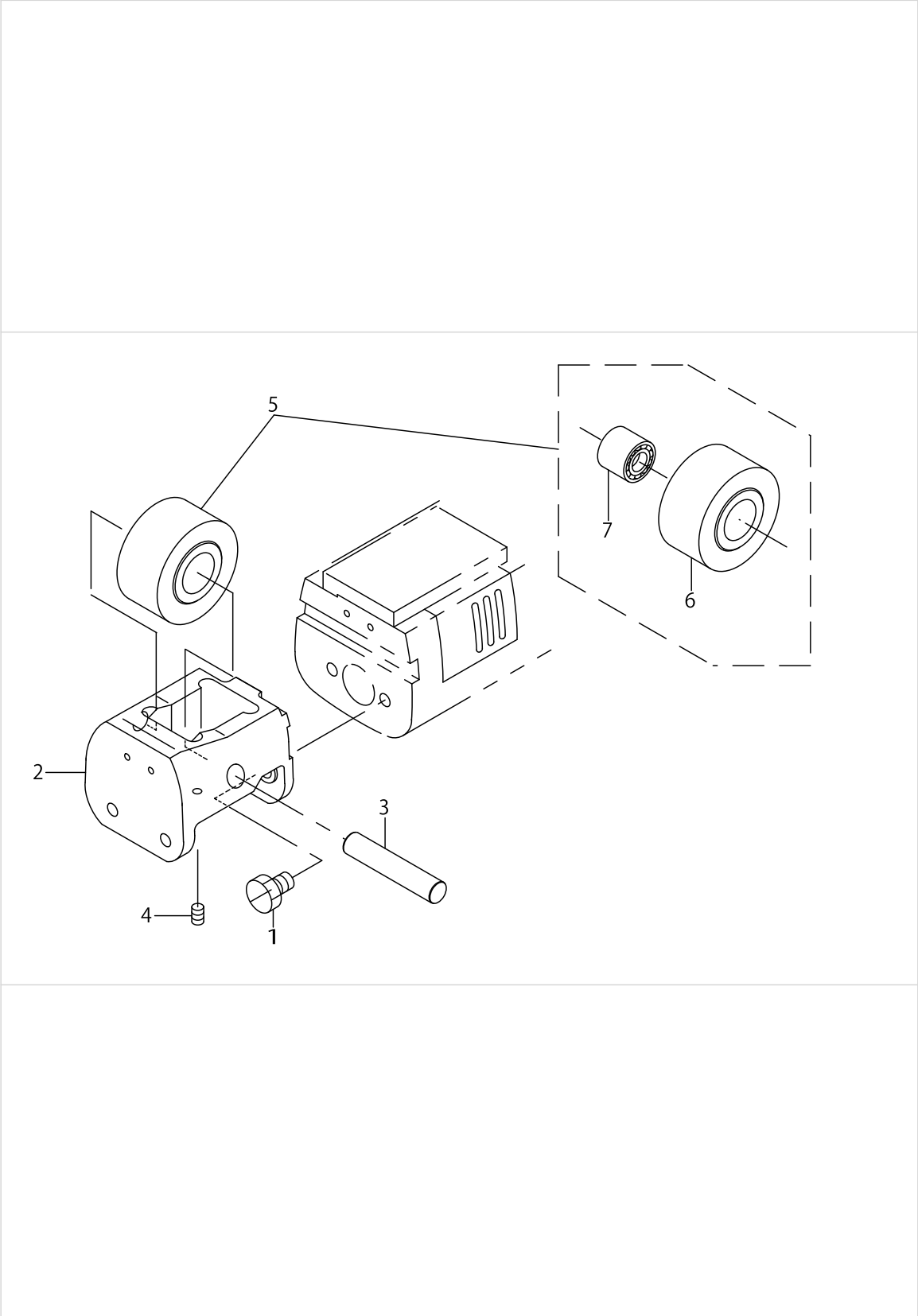
PRESSER COMPONENTS (V046 MODEL)



PRESSER COMPONENTS (V046 MODEL)

No.	Parts No.	Parts name	Remarks	Level	Cons	Qty
1	MAV04615000	LIFTING PRESSER JOINT PLATE				1
2	MAV04617000	LIFTING PRESSER LINK PIN				1
3	WP0430800SC	WASHER M4				1
4	NM6040001SC	NUT M4				1
5	WP0651056SH	WASHER 6.5X11X1				1
6	RC0560711KP	RETAINING RING				1
7	SD0600271SP	HINGE SCREW D= 6 H= 2.7				1
8	NS6110350SP	NUT 11/64-40				1
9	MAV04618000	LEVER BRACKET				1
10	SS9090823TP	BOLT 9/64-40 L=8				1
11	MAV04655000	CONNECTING BLOCK				1
12	SS6620730SP	SCREW 3/16-32 L= 7.0				1
13	MAV04656000	PRESSER SPRING				2

LOWER ROLLER COMPONENTS (V046 MODEL)

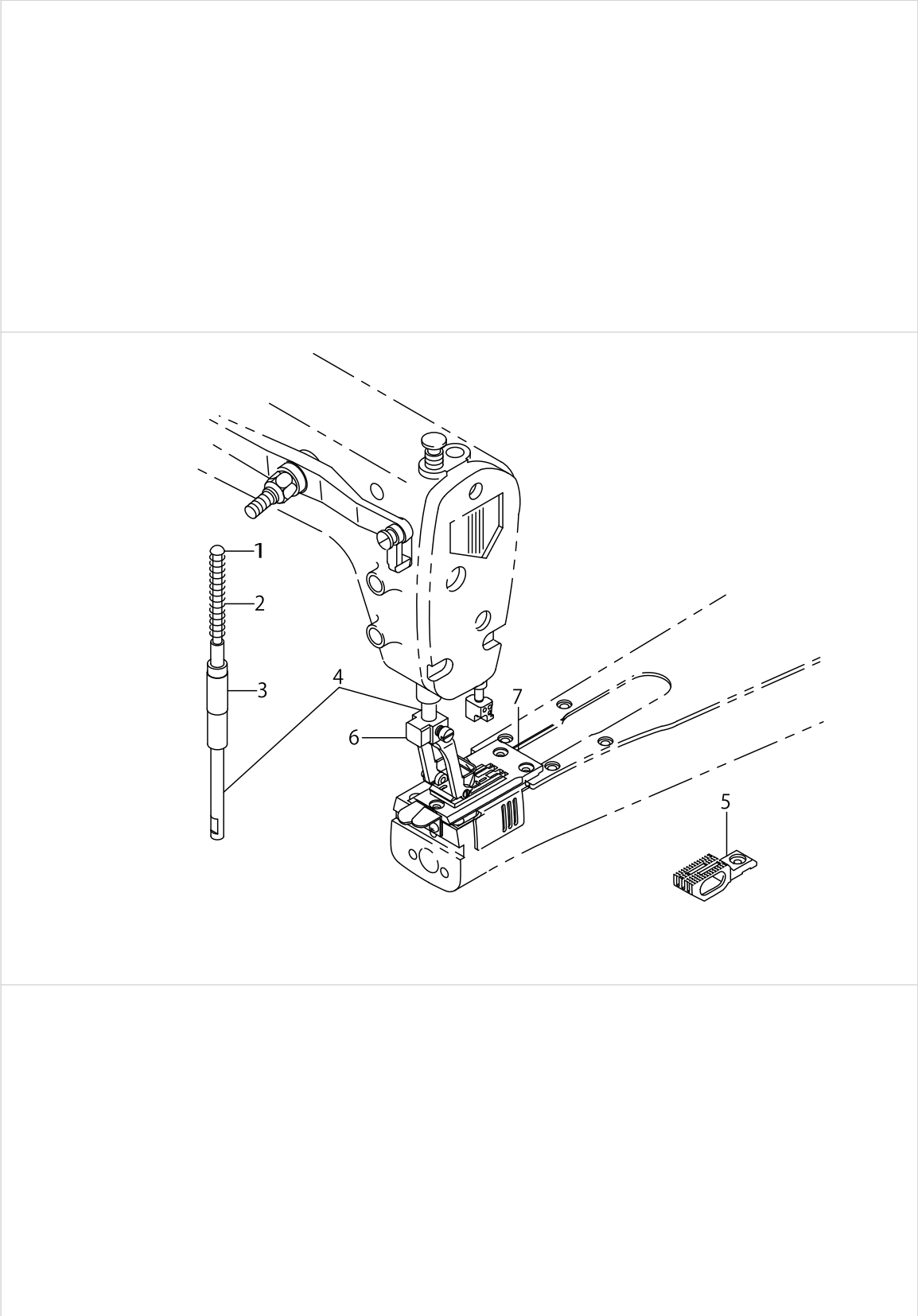


LOWER ROLLER COMPONENTS (V046 MODEL)

No.	Parts No.	Parts name	Remarks	Level	Cons	Qty
1	SS9120910TP	SCREW 3/16-28 L=9				2
2	MAV04620000	LOWER ROLLER BASE				1
3	MAV04623000	LOWER ROLLER SHAFT				1
4	SM8040602TP	SCREW M4X0.7 L=6				1
5	MAV046210B0	LOWER ROLLER COMPL.				1
6	MAV046210A0	LOWER ROLLER ASM.		*		1
7	GBR01174000A	NEEDLE BEARING		*		1



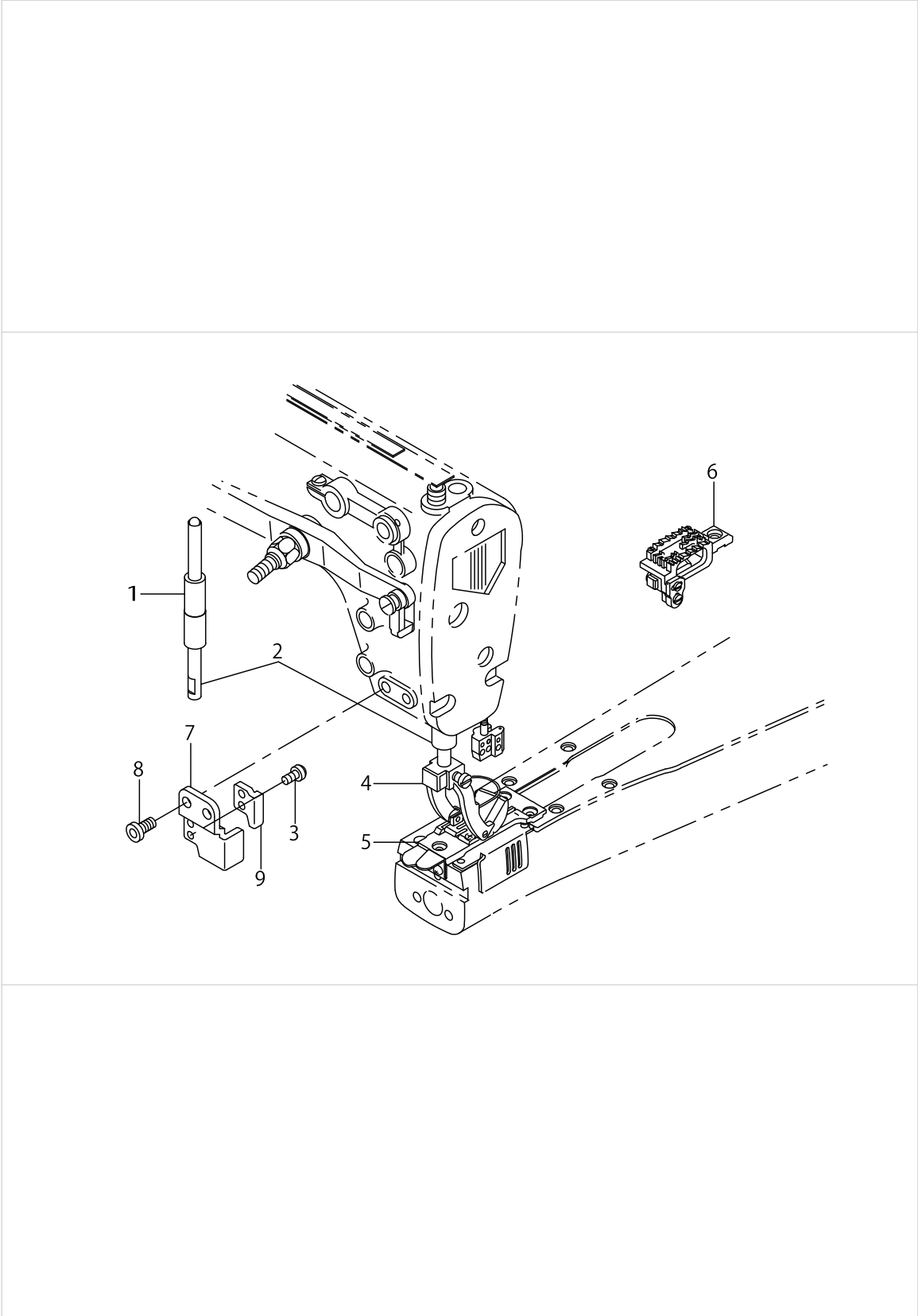
EXCHANGING PARTS AT USING VO45 UNIT (FOR MS-1190AEC190M)



EXCHANGING PARTS AT USING VO45 UNIT (FOR MS-1190AEC P190M)

No.	Parts No.	Parts name	Remarks	Level	Cons	Qty
1	MAV01510000	PRESSER GUIDE BAR				1
2	MAV01511000	SPRING				1
3	MAV01512000A	BUSHING,LOWER				1
4	MAV04580000	V0-45 PRESSER BAR				1
5	MAV04593000	V0-45 FEED DOG	REFER TO THE TABLE OF EXCHANGING PARTS ON PAGE 13			1
6	MAV04583CB0	PRESSER FOOT ASM. 3/16	REFER TO THE TABLE OF EXCHANGING PARTS ON PAGE 13			1
7	MAV04572C00	V0-45 THROAT PLATE (3/16)	REFER TO THE TABLE OF EXCHANGING PARTS ON PAGE 13			1

EXCHANGING PARTS AT USING VO45 UNIT (FOR MS-126CPAE1260AEC261M)

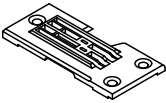
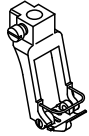
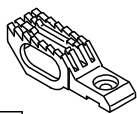


EXCHANGING PARTS AT USING VO45 UNIT (FOR MS-126CPAE1260AEC261M)

No.	Parts No.	Parts name	Remarks	Level	Cons	Qty
1	12958609	BUSHING,LOWER				1
2	12958559	PRESSER BAR ASM.				1
3	SS7110910TP	SCREW 11/64-40 L= 8.5				2
4	12960068	PRESSER 1/4" (ASM) EXPORT	REFER TO THE TABLE OF EXCHANGING PARTS ON PAGE 14			1
5	12953204	THROAT PLATE XH (1/4")	REFER TO THE TABLE OF EXCHANGING PARTS ON PAGE 14			1
6	12963351	FEED DOG XH(1/4") ASM.	REFER TO THE TABLE OF EXCHANGING PARTS ON PAGE 14			1
7	12959300	PRESSER FOOT GUIDE (A)				1
8	SM6061202TP	SCREW M6 L=12				2
9	12959409	PRESSER FOOT GUIDE (B)				1

TABLE OF V045 EXCHANGING GAUGE PARTS (FOR MS-1190A/ECP190M)

FOR MS-1190  
MS-1190用

				1		2		3		4		5	
Description 品名			Gauge set		Gauge set (with finger guard)		V045 Throat plate		V045 Presser foot asm. (with finger guard)		V045 Feed dog		
			ゲージセット		ゲージセット (指ガード付)		V045 針板		V045 押え(組) (指ガード付)		V045 送り歯		
Needle gauge size 針幅													
Code ゲージ 記号			NO		NO		NO		NO		NO		
	inch	mm	NO	MAV04570AA0	NO	MAV04570AB0	NO	MAV04570A00	NO	MAV04581AB0	NO	MAV04593000	
B	1/8	3.2	1	MAV04570AA0	6	MAV04570AB0	11	MAV04570A00	16	MAV04581AB0	21	MAV04593000	
C	5/32	4.0	2	MAV04571BA0	7	MAV04571BB0	12	MAV04571B00	17	MAV04582BB0		↑	
D	3/16	4.8	3	MAV04572CA0	8	MAV04572CB0	13	MAV04572C00	18	MAV04583CB0		↑	
E	7/32	5.6	4	MAV04573DA0	9	MAV04573DB0	14	MAV04573D00	19	MAV04584DB0		↑	
F	1/4	6.4	5	MAV04574EA0	10	MAV04574EB0	15	MAV04574E00	20	MAV04585EB0	22	MAV04594000	

FOR MS-1190M  
MS-1190M用

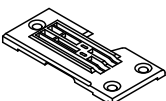
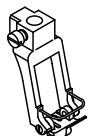
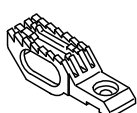
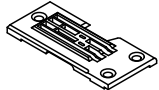

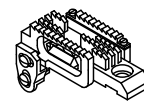
				1		2		3		4		5	
Description 品名			Gauge set		Gauge set (with finger guard)		V045 Throat plate		V045 Presser foot asm. (with finger guard)		V045 Feed dog		
			ゲージセット		ゲージセット (指ガード付)		V045 針板		V045 押え(組) (指ガード付)		V045 送り歯		
Needle gauge size 針幅													
Code ゲージ 記号			NO		NO		NO		NO		NO		
	inch	mm	NO	MAV04575AA0	NO	MAV04575AB0	NO	MAV04575A00	NO	MAV04586AB0	NO	MAV04595000	
B	1/8	3.2	23	MAV04575AA0	28	MAV04575AB0	33	MAV04575A00	38	MAV04586AB0	43	MAV04595000	
C	5/32	4.0	24	MAV04576BA0	29	MAV04576BB0	34	MAV04576B00	39	MAV04587BB0		↑	
D	3/16	4.8	25	MAV04577CA0	30	MAV04577CB0	35	MAV04577C00	40	MAV04588CB0		↑	
E	7/32	5.6	26	MAV04578DA0	31	MAV04578DB0	36	MAV04578D00	41	MAV04589DB0		↑	
F	1/4	6.4	27	MAV04579EA0	32	MAV04579EB0	37	MAV04579E00	42	MAV04590EB0	44	MAV04596000	

TABLE OF V045 EXCHANGING GAUGE PARTS (FOR MS-1190AEC190M)

No.	Parts No.	Parts name	Remarks	Level	Cons	Qty
1	MAV04570AA0	GAUGE SET 1/8				1
2	MAV04571BA0	GAUGE SET 5/32				1
3	MAV04572CA0	GAUGE SET 3/16				1
4	MAV04573DA0	GAUGE SET 7/32				1
5	MAV04574EA0	GAUGE SET 1/4				1
6	MAV04570AB0	GAUGE SET 1/8 (FINGER GUARD)				1
7	MAV04571BB0	GAUGE SET 5/32 (FINGER GUARD)				1
8	MAV04572CB0	GAUDE SET 3/16 (FINGER GUARD)				1
9	MAV04573DB0	GAUGE SET 7/32 (FINGER GUARD)				1
10	MAV04574EB0	GAUGE SET 1/4 (FINGER GUARD)				1
11	MAV04570A00	V0-45 THROAT PLATE (1/8)				1
12	MAV04571B00	V0-45 THROAT PLATE (5/32)				1
13	MAV04572C00	V045 THROAT PLATE (3116)				1
14	MAV04573D00	V0-45 THROAT PLATE (7/32)				1
15	MAV04574E00	V0-45 THROAT PLATE (1/4)				1
16	MAV04581AB0	V0-45 PRESSER 1/8 ASM.(EXPORT)				1
17	MAV04582BB0	PRESSER FOOT ASM. 5/32				1
18	MAV04583CB0	PRESSER FOOT ASM. 3/16				1
19	MAV04584DB0	PRESSER FOOT ASM. 7/32				1
20	MAV04585EB0	PRESSER ASM. 1/4 (FOR V0-45)				1
21	MAV04593000	V0-45 FEED DOG				1
22	MAV04594000	V0-45 FEED DOG 1/4				1
23	MAV04575AA0	GAUGE SET 1/8				1
24	MAV04576BA0	GAUGE SET 5/32				1
25	MAV04577CA0	GAUGE SET 3/16				1
26	MAV04578DA0	GAUGE SET 7/32				1
27	MAV04579EA0	GAUGE SET 1/4				1
28	MAV04575AB0	GAUGE SET 1/8 (FINGER GUARD)				1
29	MAV04576BB0	GAUGE SET 5/32 (FINGER GUARD)				1
30	MAV04577CB0	GAUGE SET 3/16 (FINGER GUARD)				1
31	MAV04578DB0	GAUGE SET 7/32 (FINGER GUARD)				1
32	MAV04579EB0	GAUGE SET 1/4 (FINGER GUARD)				1
33	MAV04575A00	V0-45 THROAT PLATE 1/8M				1
34	MAV04576B00	V0-45 THROAT PLATE 5/32M				1
35	MAV04577C00	V0-45 THROAT PLATE 3/16M				1
36	MAV04578D00	V0-45 THROAT PLATE 7/32M				1
37	MAV04579E00	V0-45 THROAT PLATE 1/4M				1
38	MAV04586AB0	V0-45 PRESSER ASM. 1/8M EXPORT				1
39	MAV04587BB0	V0-45 PRESSER ASM. 5/32M EXPOR				1
40	MAV04588CB0	V0-45 PRESSER ASM. 3/16M EXPOR				1
41	MAV04589DB0	V0-45 PRESSER ASM. 7/32M EXPOR				1
42	MAV04590EB0	V0-45 PRESSER				1
43	MAV04595000	V0-45 FEED (M)				1
44	MAV04596000	V0-45 FEED DOG 1/4M				1

TABLE OF V045 EXCHANGING GAUGE PARTS (FOR MS-1261AEC26COAE1261M)

FOR MS-1261  
MS-1261用

		1			2			3			4			5								
Description 品名	Gauge set									Gauge set (with finger guard)			Throat plate			Presser foot asm. (with finger guard)			Feed dog asm.			
	ゲージセット									ゲージセット (指ガード付)			針板			押え(組) (指ガード付)			送り歯(組)			
Needle gauge size 針幅																						
Code ゲージ 記号			NO			NO			NO			NO			NO							
	inch	mm																				
E	7/32	5.6	1	MAV04570ECO	6	MAV04570EDO	11	12953303	16	12960167	21	12963450										
F	1/4	6.4	2	MAV04570FCO	7	MAV04570FDO	12	12953204	17	12960068	22	12963351										
G	9/32	7.2	3	MAV04570GCO	8	MAV04570GDO	13	12953402	18	12960266	23	12963559										
H	5/16	8.0	4	MAV04570HCO	9	MAV04570HDO	14	12953501	19	12960365	24	12963658										
K	3/8	9.5	5	MAV04570KCO	10	MAV04570KDO	15	12953600	20	12960464	25	12963757										

FOR MS-1260・1261M  
MS-1260・1261M用

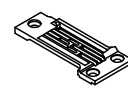
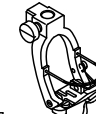
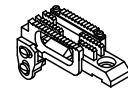
		1			2			3			4			5								
Model 機種	Gauge set									Gauge set (with finger guard)			Throat plate			Presser foot asm. (with finger guard)			Feed dog asm.			
	ゲージセット									ゲージセット (指ガード付)			針板			押え(組) (指ガード付)			送り歯(組)			
Needle gauge size 針幅																						
Code ゲージ 記号			NO			NO			NO			NO			NO							
	inch	mm																				
MS-1260	D	3/16	4.8	26	MAV04572DCO	32	MAV04572DDO	38	12977906	44	12978268	50	12978755									
	E	7/32	5.6	27	MAV04571ECO	33	MAV04571EDO	39	12972907	45	12960183	51	12975058									
MS-1261M	F	1/4	6.4	28	MAV04571FCO	34	MAV04571FDO	40	12972808	46	12960084	52	12974952									
	G	9/32	7.2	29	MAV04571GCO	35	MAV04571GDO	41	12973004	47	12960282	53	12975157									
	H	5/16	8.0	30	MAV04571HCO	36	MAV04571HDO	42	12973103	48	12960381	54	12975256									
	K	3/8	9.5	31	MAV04571KCO	37	MAV04571KDO	43	12973202	49	12960480	55	12975355									

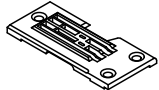
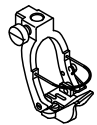
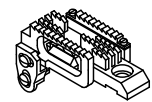
TABLE OF V045 EXCHANGING GAUGE PARTS (FOR MS-1261AEC26COAE1261M)

No.	Parts No.	Parts name	Remarks	Level	Cons	Qty
1	MAV04570EC0	GAUGE SET 7/32				1
2	MAV04570FC0	GAUGE SET 1/4				1
3	MAV04570GC0	GAUGE SET 9/32				1
4	MAV04570HC0	GAUGE SET 5/16				1
5	MAV04570KC0	GAUGE SET 3/8				1
6	MAV04570ED0	GAUGE SET 7/32 (FINGER GUARD)				1
7	MAV04570FD0	GAUGE SET 1/4 (FINGER GUARD)				1
8	MAV04570GD0	GAUGE SET 9/32 (FINGER GUARD)				1
9	MAV04570HD0	GAUGE SET 5/16 (FINGER GUARD)				1
10	MAV04570KD0	GAUGE SET 3/8 (FINGER GUARD)				1
11	12953303	THROAT PLATE XH 7/32				1
12	12953204	THROAT PLATE XH (1/4")				1
13	12953402	THROAT PLATE XH 9/32				1
14	12953501	THROAT PLATE XH 5/16				1
15	12953600	THROAT PLATE XH 3/8				1
16	12960167	PRESSER FOOT 7/32" ASM.				1
17	12960068	PRESSER 1/4" (ASM) EXPORT				1
18	12960266	PRESSER FOOT 9/32" ASM.				1
19	12960365	PRESSER FOOT 5/16" ASM.				1
20	12960464	PRESSER FOOT 3/8" ASM.				1
21	12963450	FEED DOG XH ASM. 7/32				1
22	12963351	FEED DOG XH(1/4") ASM.				1
23	12963559	FEED DOG XH ASM. 9/32				1
24	12963658	FEED DOG XH ASM. 5/16				1
25	12963757	FEED DOG XH ASM. 3/8				1
26	MAV04572DC0	GAUDE SET 3/16				1
27	MAV04571EC0	GAUGE SET 7/32				1
28	MAV04571FC0	GAUGE SET 1/4				1
29	MAV04571GC0	GAUGE SET 9/32				1
30	MAV04571HC0	GAUGE SET 5/16				1
31	MAV04571KC0	GAUDE SET 3/8				1
32	MAV04572DD0	GAUDE SET 3/16 (FINGER GUARD)				1
33	MAV04571ED0	GAUGE SET 7/32 (FINGER GUARD)				1
34	MAV04571FD0	GAUGE SET 1/4 (FINGER GUARD)				1
35	MAV04571GD0	GAUGE SET 9/32 (FINGER GUARD)				1
36	MAV04571HD0	GAUGE SET 5/16 (FINGER GUARD)				1
37	MAV04571KD0	GAUDE SET 3/8 (FINGER GUARD)				1
38	12977906	THROAT PLATE MH (3/16")				1
39	12972907	THROAT PLATE MH 7/32				1
40	12972808	THROAT PLATE MH (1/4")				1
41	12973004	THROAT PLATE MH 9/32				1
42	12973103	THROAT PLATE MH 5/16				1
43	12973202	THROT PLATE 3/8				1
44	12978268	PRESSER MH (3/16") ASM. EXPORT				1
45	12960183	PRESSER FOOT ASM., 7/32" MH				1
46	12960084	PRESSER 1/4"MH ASM.,EXPORT				1
47	12960282	PRESSER FOOT MH ASM., 9/32				1



TABLE OF V045 EXCHANGING GAUGE PARTS (FOR MS-1261AEC26COAE1261M)

FOR MS-1261  
MS-1261用

				1		2		3		4		5		
Description 品名		Gauge set		Gauge set (with finger guard)		Throat plate		Presser foot asm. (with finger guard)		Feed dog asm.				
		ゲージセット		ゲージセット (指ガード付)		針板		押え(組) (指ガード付)		送り歯(組)				
Needle gauge size 針幅														
Code ゲージ 記号			NO		NO		NO		NO		NO		NO	
	inch	mm												
E	7/32	5.6	1	MAV04570ECO	6	MAV04570EDO	11	12953303	16	12960167	21	12963450		
F	1/4	6.4	2	MAV04570FCO	7	MAV04570FDO	12	12953204	17	12960068	22	12963351		
G	9/32	7.2	3	MAV04570GCO	8	MAV04570GDO	13	12953402	18	12960266	23	12963559		
H	5/16	8.0	4	MAV04570HCO	9	MAV04570HDO	14	12953501	19	12960365	24	12963658		
K	3/8	9.5	5	MAV04570KCO	10	MAV04570KDO	15	12953600	20	12960464	25	12963757		

FOR MS-1260・1261M  
MS-1260・1261M用


				1		2		3		4		5			
Model 機種		Description 品名		Gauge set		Gauge set (with finger guard)		Throat plate		Presser foot asm. (with finger guard)		Feed dog asm.			
		ゲージセット		ゲージセット (指ガード付)		針板		押え(組) (指ガード付)		送り歯(組)					
Needle gauge size 針幅															
Code ゲージ 記号			NO		NO		NO		NO		NO		NO		
	inch	mm													
MS-1260	D	3/16	4.8	26	MAV04572DCO	32	MAV04572DDO	38	12977906	44	12978268	50	12978755		
	E	7/32	5.6	27	MAV04571ECO	33	MAV04571EDO	39	12972907	45	12960183	51	12975058		
MS-1261M	F	1/4	6.4	28	MAV04571FCO	34	MAV04571FDO	40	12972808	46	12960084	52	12974952		
	G	9/32	7.2	29	MAV04571GCO	35	MAV04571GDO	41	12973004	47	12960282	53	12975157		
	H	5/16	8.0	30	MAV04571HCO	36	MAV04571HDO	42	12973103	48	12960381	54	12975256		
	K	3/8	9.5	31	MAV04571KCO	37	MAV04571KDO	43	12973202	49	12960480	55	12975355		

TABLE OF V045 EXCHANGING GAUGE PARTS (FOR MS-1261AEC26COAE1261M)

No.	Parts No.	Parts name	Remarks	Level	Cons	Qty
48	12960381	PRESSER FOOT ASM. 5/16, MH				1
49	12960480	PRESSER FOOT ASM. 3/8, MH				1
50	12978755	FEED DOG MH(3/16") ASM.				1
51	12975058	FEED DOG MH ASM. 7/32				1
52	12974952	FEED DOG MH(1/4")ASM.				1
53	12975157	FEED DOG MH 9/32" ASM.				1
54	12975256	FEED DOG MH ASM. 5/16				1
55	12975355	FEED DOG MH 3/8" ASM.				1

## HOW TO MAKE USE OF THIS PARTS LIST

1.As to "#01" and "#02" refer to the "Note" given at the bottom of the respective pages.

2.Codes on the "Qty" column

- Each numeral indicates the number of parts required.
- "0.1" and "2.5" indicate the length (in meters) of the respective parts.

3.Parentheses mean that the corresponding part is a subpart that constructs an assembly part.

4.Dotted lines on the Figures indicate assembly parts.

1. リストページの# 0 1、# 0 2の印は、ページ下の"注記"の説明を参照下さい。
2. 数量欄の数字は、個数を表し、0. 1、2. 5等の数値は、長さ（単位メートル）を表します。
3. 数量欄の（ ）は、組部品を構成している子部品であることを意味します。
4. イラストページの-----枠は、組構成であることを意味します。

NUMERICAL INDEX OF PARTS

PART NO	PAGE	REF NO.	PART NO	PAGE	REF NO.	PART NO	PAGE	REF NO.
12953204	18	5	GBR01174000A	14	7	MAV04546000	8	35
12953204	22	12	MAV01510000	16	1	MAV04547000	8	11
12953303	22	11	MAV01511000	16	2	MAV045470A0	8	10
12953402	22	13	MAV01512000A	16	3	MAV045500A0	8	27
12953501	22	14	MAV04501000	2	1	MAV04555000	10	1
12953600	22	15	MAV04502000	2	2	MAV04556000	10	2
12958559	18	2	MAV04503000	2	7	MAV04557000	10	3
12958609	18	1	MAV04504000	2	9	MAV04558000	10	5
12959300	18	7	MAV04505000	2	15	MAV04559000	10	10
12959409	18	9	MAV04506000	2	16	MAV04560000	10	13
12960068	18	4	MAV04507000	2	18	MAV04561000	10	18
12960068	22	17	MAV04515000	4	1	MAV04562000	10	23
12960084	22	46	MAV04516000	4	8	MAV04563000	10	35
12960167	22	16	MAV045160B0	4	7	MAV04564000	10	26
12960183	22	45	MAV04517000	4	9	MAV04565000	10	28
12960266	22	18	MAV04518000	4	15	MAV04566000	10	30
12960282	22	47	MAV045180A0	4	14	MAV04567000	10	31
12960365	22	19	MAV04519000	4	19	MAV04568000	10	33
12960381	24	48	MAV04520000	4	23	MAV04569000	10	34
12960464	22	20	MAV04521000	4	26	MAV04570A00	20	11
12960480	24	49	MAV045210A0	4	25	MAV04570AA0	20	1
12963351	18	6	MAV04522000	4	30	MAV04570AB0	20	6
12963351	22	22	MAV04525000	6	2	MAV04570EC0	22	1
12963450	22	21	MAV045250A0	6	1	MAV04570ED0	22	6
12963559	22	23	MAV04526000	6	6	MAV04570FC0	22	2
12963658	22	24	MAV04527000	6	12	MAV04570FD0	22	7
12963757	22	25	MAV04528000	6	14	MAV04570GC0	22	3
12972808	22	40	MAV04529000	6	15	MAV04570GD0	22	8
12972907	22	39	MAV04530000	6	16	MAV04570HC0	22	4
12973004	22	41	MAV04531000	6	17	MAV04570HD0	22	9
12973103	22	42	MAV04532000	6	19	MAV04570KC0	22	5
12973202	22	43	MAV04533000	6	21	MAV04570KD0	22	10
12974952	24	52	MAV04534000	6	5	MAV04571B00	20	12
12975058	24	51	MAV04535000	8	2	MAV04571BA0	20	2
12975157	24	53	MAV045350A0	8	1	MAV04571BB0	20	7
12975256	24	54	MAV04536000	8	7	MAV04571EC0	22	27
12975355	24	55	MAV045360A0	8	6	MAV04571ED0	22	33
12977906	22	38	MAV04537000	8	14	MAV04571FC0	22	28
12978268	22	44	MAV045380A0	8	18	MAV04571FD0	22	34
12978755	24	50	MAV045380B0	8	17	MAV04571GC0	22	29
13515606	10	36	MAV04541000	8	20	MAV04571GD0	22	35
B1506352000	10	29	MAV04542000	8	21	MAV04571HC0	22	30
B2056781000	10	16	MAV04543000	8	23	MAV04571HD0	22	36
CS1201010SH	4	3	MAV04544000	8	24	MAV04571KC0	22	31
D2587L8WB00	10	7	MAV04545000	8	26	MAV04571KD0	22	37

# NUMERICAL INDEX OF PARTS

PART NO	PAGE	REF NO.	PART NO	PAGE	REF NO.	PART NO	PAGE	REF NO.
MAV04572C00	16	7	MAV04607000	2	21	SB307000500	8	33
MAV04572C00	20	13	MAV04610000	4	12	SB310000300	6	7
MAV04572CA0	20	3	MAV04611000	2	19	SB310000700	6	8
MAV04572CB0	20	8	MAV04615000	12	1	SB320000300	6	3
MAV04572DC0	22	26	MAV04616000	10	19	SB320000400	6	4
MAV04572DD0	22	32	MAV04617000	12	2	SD0550451SP	10	8
MAV04573D00	20	14	MAV04618000	12	9	SD0600271SP	10	24
MAV04573DA0	20	4	MAV04620000	14	2	SD0600271SP	12	7
MAV04573DB0	20	9	MAV046210A0	14	6	SD0600361SP	10	12
MAV04574E00	20	15	MAV046210B0	14	5	SD0600402TP	10	20
MAV04574EA0	20	5	MAV04623000	14	3	SD0600596SH	6	10
MAV04574EB0	20	10	MAV04635000	8	32	SD0600756TP	4	28
MAV04575A00	20	33	MAV046350A0	8	31	SD0640321TP	10	14
MAV04575AA0	20	23	MAV04636000	8	37	SD0640325SP	10	11
MAV04575AB0	20	28	MAV046360A0	8	36	SD0640751SP	10	15
MAV04576B00	20	34	MAV04637000	8	39	SD0801606SH	4	21
MAV04576BA0	20	24	MAV04638000	8	40	SM5030355SE	2	8
MAV04576BB0	20	29	MAV04640000	8	42	SM5040655SN	2	17
MAV04577C00	20	35	MAV046410A0	8	43	SM6031202TP	2	13
MAV04577CA0	20	25	MAV04655000	12	11	SM6031402TP	10	37
MAV04577CB0	20	30	MAV04656000	12	13	SM6040802TP	8	22
MAV04578D00	20	36	NM6030003SC	2	14	SM6040802TP	10	6
MAV04578DA0	20	26	NM6030003SC	10	38	SM6041002TP	10	9
MAV04578DB0	20	31	NM6040001SC	12	4	SM6061002TP	10	27
MAV04579E00	20	37	NM6040003SC	6	11	SM6061202TP	18	8
MAV04579EA0	20	27	NM6060003SC	4	22	SM6061602TP	4	24
MAV04579EB0	20	32	NM6060003SC	8	30	SM6062002TP	2	3
MAV04580000	16	4	NM6080001SC	10	32	SM6062002TP	8	29
MAV04581AB0	20	16	NM6080003SC	4	17	SM8040302TP	6	20
MAV04582BB0	20	17	NS6110350SP	12	8	SM8040402TP	8	28
MAV04583CB0	16	6	NS6110430SP	10	25	SM8040602TP	6	18
MAV04583CB0	20	18	NS6620310SP	10	21	SM8040602TP	8	25
MAV04584DB0	20	19	PS0300102K0	2	12	SM8040602TP	14	4
MAV04585EB0	20	20	PS0300242K0	2	11	SM8040802TP	8	41
MAV04586AB0	20	38	RC0560711KP	12	6	SM8050502TP	8	15
MAV04587BB0	20	39	RC0650811KP	8	16	SM8050602TP	6	13
MAV04588CB0	20	40	RC1200001KP	4	5	SM8060602TP	4	11
MAV04589DB0	20	41	RC1851217KP	6	9	SM8060602TP	10	4
MAV04590EB0	20	42	SB106000200	4	27	SM8082502TP	4	18
MAV04593000	16	5	SB107000100	8	38	SM9061850SC	2	5
MAV04593000	20	21	SB108000600	4	16	SS6620730SP	12	12
MAV04594000	20	22	SB112000500	4	4	SS7110910TP	18	3
MAV04595000	20	43	SB135000300	4	10	SS9090823TP	12	10
MAV04596000	20	44	SB212000100	4	2	SS9120910TP	14	1
MAV04603000	2	20	SB307000400	8	34	WP0430800SC	12	3

## NUMERICAL INDEX OF PARTS

PART NO	PAGE	REF NO.
WP0480856SP	10	22
WP0641600SC	2	6
WP0641600SC	4	29
WP0651056SH	10	17
WP0651056SH	12	5
WP1221016SP	4	6
WZ1200200KP	4	13