

MODEL : AE-6
List No : 0972-03

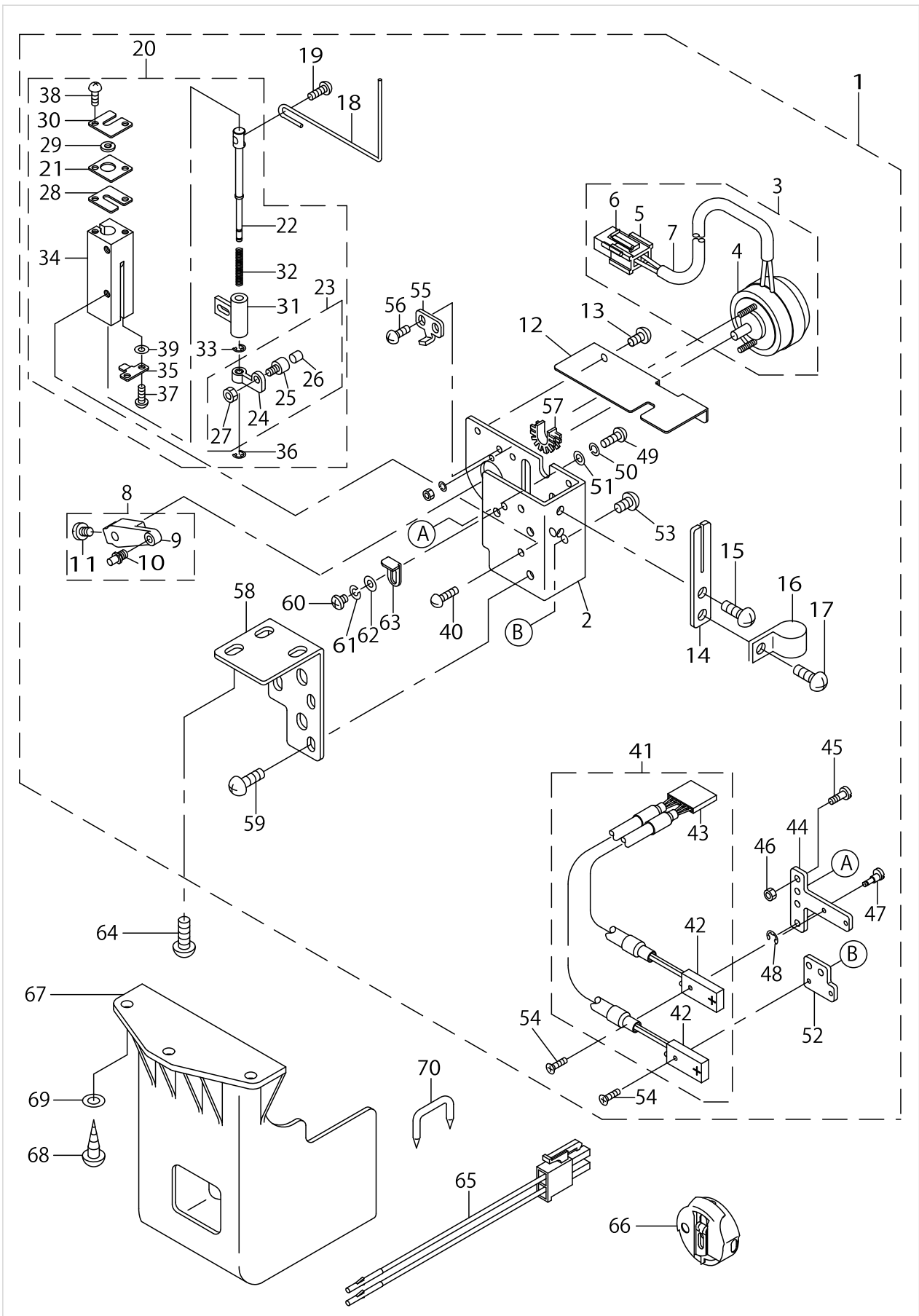
PARTS LIST

Published:09/10/2017

CONTENTS

COMPONENTS	1
HOW TO MAKE USE OF THIS PARTS LIST	5

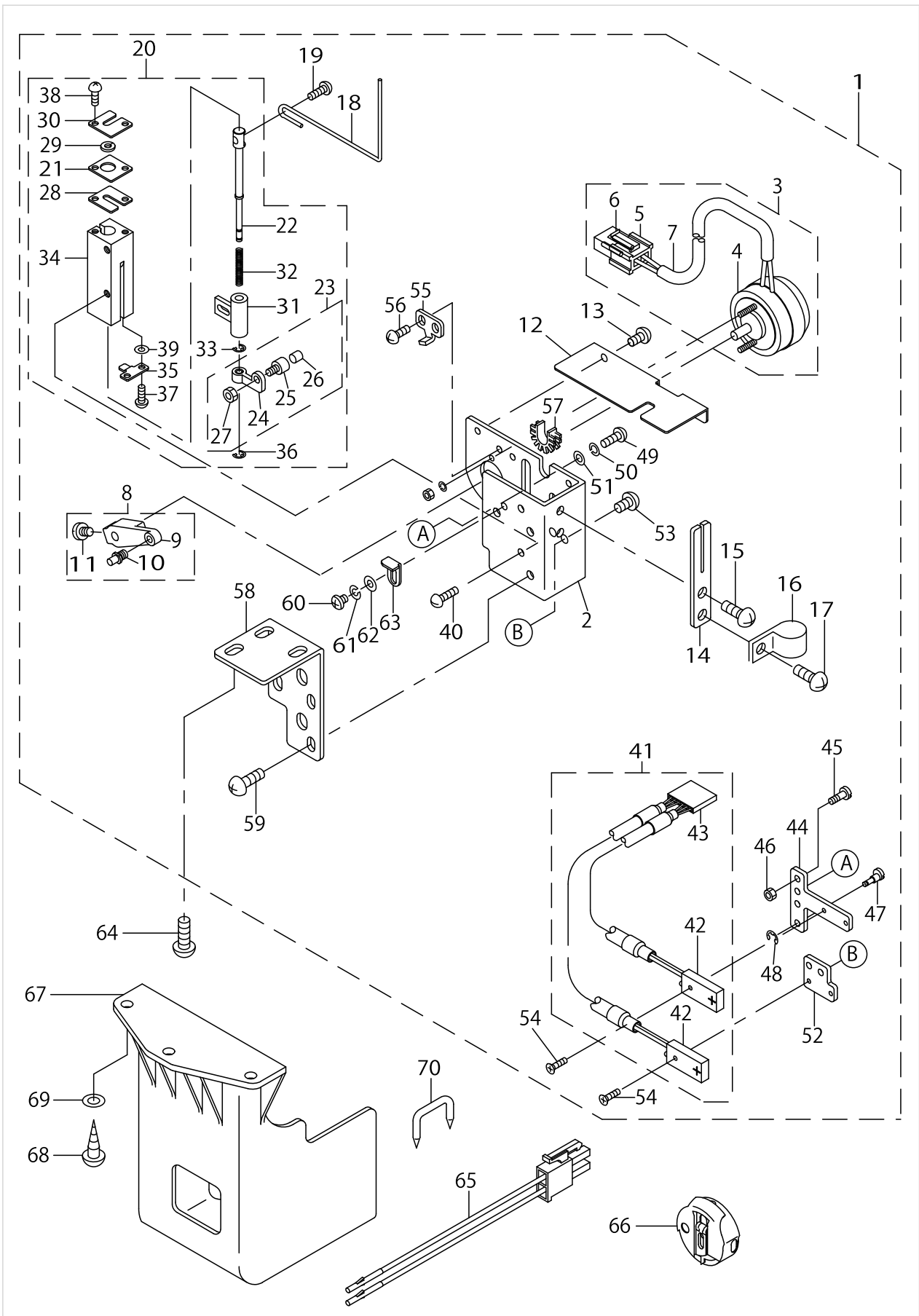
COMPONENTS



COMPONENTS

No.	Parts No.	Parts name	Remarks	Level	Cons	Qty
1	GAE060100A0	DRIVING DEVICE ASM.				1
2	GAE06010000	BASE		*		1
3	GAE060110A0	SOLENOID ASM.		*		1
4	GAE06011000	ROTARY SOLENOID		*		1
5	HK034620020	2P PLUG		*		1
6	HK034630000	TERMINAL		*		2
7	E8760452H00	TUBE		*		1.1
8	GAE060120A0	SOLENOID ARM ASM.		*		1
9	GAE06012000	SOLENOID ARM		*		1
10	GAE03013000	SOLENOID ARM PIN		*		1
11	SS6090810SP	SCREW 9/64-40 L= 7.5		*		1
12	GAE06014000	TOP COVER		*		1
13	SS4080415SP	SCREW 1/8-44 L=4		*		2
14	GAE06016000	GUIDE		*		1
15	SS4110515SP	SCREW 11/64-40 L=5		*		1
16	MAZ02508000	CORD HOLDER		*		1
17	SS4110715SP	SCREW 11/64-40 L=7		*		1
18	GAE06017000	WIRE		*		1
19	SS4080415SP	SCREW 1/8-44 L=4		*		1
20	GAE060260A0	DETECTING ROD GUIDE ASM.		*		1
21	GAE06019000	DETECTING ROD FELT GUIDE		*		1
22	GAE06020000	DETECTING ROD		*		1
23	GAE060230A0	MAGNET PLATE ASM.		*		1
24	GAE03023000	MAGNET PLATE		*		1
25	GAE03024000	MAGNET BASE		*		1
26	MAL01129000	MAGNET		*		1
27	NM6030001MZ	NUT M3X0.5		*		1
28	GAE06027000	GUIDE PLATE, LOWER		*		1
29	GAE06028000	DETECTING ROD FELT		*		1
30	GAE06029000	GUIDE PLATE, UPPER		*		1
31	GAE03021000	DETECTING ROD HOLDER		*		1
32	GAE03022000	DETECTING ROD SPRING		*		1
33	GAE03025000	E RING		*		1
34	GAE03026000	DETECTING ROD GUIDE		*		1
35	GAE03036000	DETECTING ROD STOPPER		*		1
36	RE0150000K0	SNAP RING 1.5		*		1
37	SS6060510TP	SCREW 3/32-56 L=4.5		*		2
38	SS6060510TP	SCREW 3/32-56 L=4.5		*		2
39	WP0280500SC	WASHER		*		2
40	SS4080610SP	SCREW 1/8-44 L=6.4		*		2
41	GAE060330B0	SENSOR ASM.		*		1
42	GAE060330A0	SENSOR ASM.		*		2
43	HK049210060	HOUSING		*		1
44	GAE06030000	ADJUSTING PLATE		*		1
45	GAE03031000	SLIDE PIN		*		2
46	NS6090310SP	NUT 9/64-40		*		2
47	GAE03032000	ECCENTRIC PIN		*		1

COMPONENTS



COMPONENTS

No.	Parts No.	Parts name	Remarks	Level	Cons	Qty
48	RE020000K0	E-RING		*		1
49	SS7090610SP	SCREW 9/64-40 L=6		*		1
50	WS0410002KP	SPRING WASHER		*		1
51	WP0370316SD	WASHER 3.7X8X0.3		*		1
52	GAE06034000	FITTING PLATE		*		1
53	SS4080415SP	SCREW 1/8-44 L=4		*		2
54	10621803	MOUNTING SCREW		*		2
55	GAE03018000	DRIVING LINK STOPPER A		*		1
56	SS4080415SP	SCREW 1/8-44 L=4		*		2
57	GAE06035000	BUSH		*		2
58	GAE06037000	FITTING PLATE		*		1
59	SS4110515SP	SCREW 11/64-40 L=5		*		3
60	SS4080415SP	SCREW 1/8-44 L=4		*		1
61	WS0310002KR	SPRING WASHER 3.1X5.9X0.7		*		1
62	WP0330500MB	WASHER 3.3X6X0.5		*		1
63	11898103	PRESSER FOOT AUXILIARY PLATE		*		1
64	SS4120915SP	SCREW 3/16-28 L=9		*		3
65	GAE040430A0	SOLENOID CORD ASM.				1
66	GAE060390B0	BOBBIN CASE ASM.				1
67	GAE06038000	DRIVING DEVICE COVER				1
68	SK3412001SC	WOOD SCREW D=4.1 L=20				3
69	WP0430801SC	WASHER M4				3
70	MAO11532000	CORD STAPLE				4

HOW TO MAKE USE OF THIS PARTS LIST

1.As to "#01" and "#02" refer to the "Note" given at the bottom of the respective pages.

2.Codes on the "Qty" column

- Each numeral indicates the number of parts required.
- "0.1" and "2.5" indicate the length (in meters) of the respective parts.

3.Parentheses mean that the corresponding part is a subpart that constructs an assembly part.

4.Dotted lines on the Figures indicate assembly parts.

1. リストページの# 0 1、# 0 2の印は、ページ下の"注記"の説明を参照下さい。
2. 数量欄の数字は、個数を表し、0. 1、2. 5等の数値は、長さ（単位メートル）を表します。
3. 数量欄の（ ）は、組部品を構成している子部品であることを意味します。
4. イラストページの-----枠は、組構成であることを意味します。

NUMERICAL INDEX OF PARTS

PART NO	PAGE	REF NO.	PART NO	PAGE	REF NO.
10621803	4	54	NM6030001MZ	2	27
11898103	4	63	NS6090310SP	2	46
E8760452H00	2	7	RE0150000K0	2	36
GAE03013000	2	10	RE0200000K0	4	48
GAE03018000	4	55	SK3412001SC	4	68
GAE03021000	2	31	SS4080415SP	2	60
GAE03022000	2	32	SS4080415SP	4	60
GAE03023000	2	24	SS4080610SP	2	40
GAE03024000	2	25	SS4110515SP	2	59
GAE03025000	2	33	SS4110515SP	4	59
GAE03026000	2	34	SS4110715SP	2	17
GAE03031000	2	45	SS4120915SP	4	64
GAE03032000	2	47	SS6060510TP	2	38
GAE03036000	2	35	SS6090810SP	2	11
GAE040430A0	4	65	SS7090610SP	4	49
GAE06010000	2	2	WP0280500SC	2	39
GAE060100A0	2	1	WP0330500MB	4	62
GAE06011000	2	4	WP0370316SD	4	51
GAE060110A0	2	3	WP0430801SC	4	69
GAE06012000	2	9	WS0310002KR	4	61
GAE060120A0	2	8	WS0410002KP	4	50
GAE06014000	2	12			
GAE06016000	2	14			
GAE06017000	2	18			
GAE06019000	2	21			
GAE06020000	2	22			
GAE060230A0	2	23			
GAE060260A0	2	20			
GAE06027000	2	28			
GAE06028000	2	29			
GAE06029000	2	30			
GAE06030000	2	44			
GAE060330A0	2	42			
GAE060330B0	2	41			
GAE06034000	4	52			
GAE06035000	4	57			
GAE06037000	4	58			
GAE06038000	4	67			
GAE060390B0	4	66			
HK034620020	2	5			
HK034630000	2	6			
HK049210060	2	43			
MAL01129000	2	26			
MAO11532000	4	70			
MAZ02508000	2	16			