

MODEL : MS-1261/MS-1261M/V045

List No : 0970-10

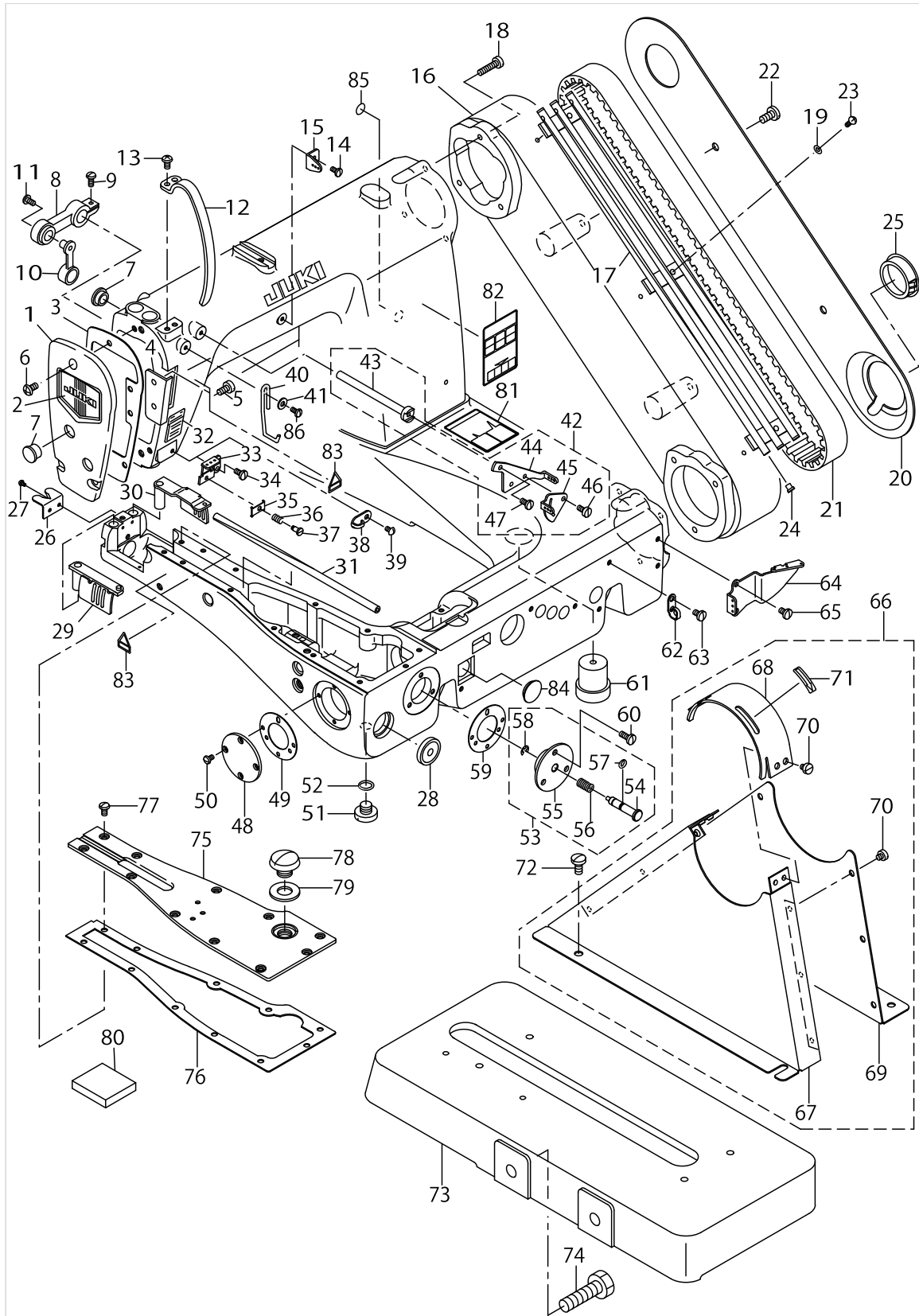
PARTS LIST

Published:09/22/2017

CONTENTS

FRAME & MISCELLANEOUS COVER COMPONENTS	1
LOOPER THREAD GUIDE COMPONENTS	5
NEEDLE BAR & MAIN SHAFT COMPONENTS	9
PRESSER BAR & LOWER SHAFT COMPONENTS	13
PRESSER FOOT COMPONENTS	17
FEED MECHANISM COMPONENTS	19
LOOPER & FEED DOG COMPONENTS	23
KNEE LIFTER COMPONENTS	27
THREAD STAND COMPONENTS	29
FRAME & COVER COMPONENTS	31
DRIVE COMPONENTS	33
CLUTCH COMPONENTS	35
ROLLER DRIVE COMPONENTS	37
PRESSER COMPONENTS	39
TABLE OF EXCHANGING GAUGE PARTS (1)	41
TABLE OF EXCHANGING GAUGE PARTS (2)	43
TABLE OF EXCHANGING GAUGE PARTS (3)	45
TABLE OF EXCHANGING GAUGE PARTS (4)	47
LIST FOR INFORMATION OF CHANGE	49
HOW TO MAKE USE OF THIS PARTS LIST	50

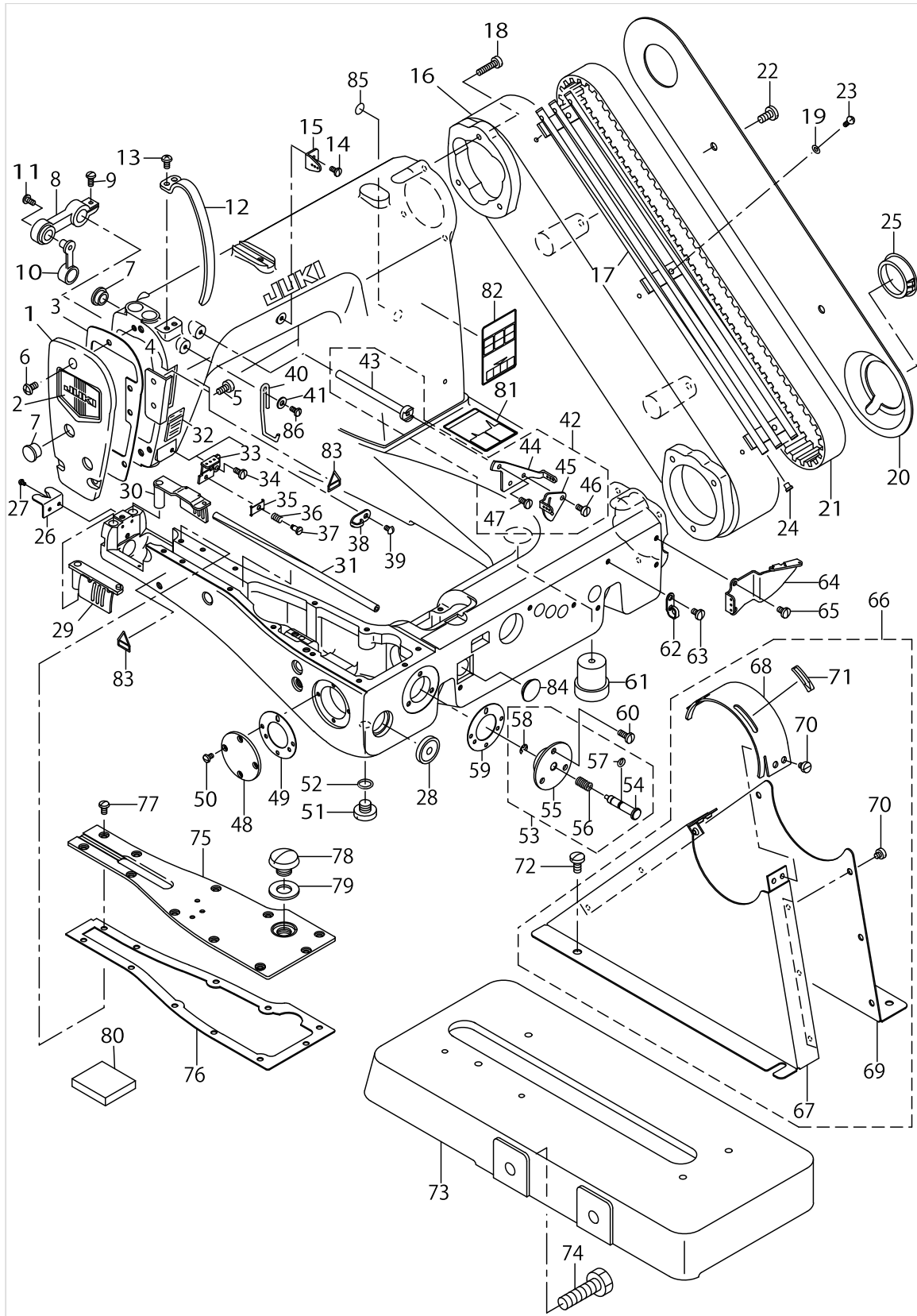
FRAME & MISCELLANEOUS COVER COMPONENTS



FRAME & MISCELLANEOUS COVER COMPONENTS

No.	Parts No.	Parts name	Remarks	Level	Cons	Qty
1	12950705	FACE PLATE				1
2	22902506	FACE PLATE				1
3	12921003	FACE PLATE GASKET				1
4	12950804	FACE PLATE SIDE PLATE				1
5	SS6110610TP	SCREW 11/64-40 L=6				2
6	SS4120915SP	SCREW 3/16-28 L=9				3
7	TA1250406R0	RUBBER PLUG D=12.5 L=4				3
8	B11620260A0	TENSION RELEASE ARM ASM.				1
9	SS4091010SP	SCREW 9/64-40 L=10				1
10	B1161026000	CONNECTING LINK				1
11	SS5090710SP	SCREW 9/64-40 L= 6.5				1
12	12950606	TENSION COVER				1
13	SS4110815SP	SCREW 11/64-40 L=8				1
14	SS7090710SP	SCREW 9/64-40 L= 6.8				1
15	12966800	UPPER THREAD GUIDE				1
16	12951000	SPROCKET WHEEL COVER				1
17	12967501	LOWER THREAD TUBE (A)				1
18	SS6122030SP	SCREW 3/16-28 L=20				6
19	WP0370316SD	WASHER 3.7X8X0.3				3
20	12921409	SPROCKET WHEEL COVER PLATE				1
21	B1219019000	TIMING BELT				1
22	SS7151210SP	SCREW 15/64-28 L=12				2
23	SS4090815SP	SCREW 9/64-40 L=8				3
24	B1124804000	THREAD GUIDE, SMALL				6
25	12921607	RUBBER PLUG				1
26	12922704	CHAIN CUTTER BLADE				1
27	SS3060410SP	SCREW 3/32-56 L=4				2
28	10704203	OIL POT WINDOW				1
29	12952552	LEFT GATE LOOPER COVER ASM.				1
30	12952255	RIGHT GATE LOOPER COVER ASM.				1
31	B1157019000	LOOPER THREAD TUBE (C)				1
32	12950507	THREAD INDICATION LABEL				1
33	12955803	THREAD TENSION DISK HOLDER	FOR MS-1261/V045			1
34	SS7090910SP	SCREW 9/64-40 L= 8.5	FOR MS-1261/V045			1
35	B1134850000A	THREAD TENSION DISC	FOR MS-1261/V045			1
36	B1135850000	TENSION SPRING (A)	FOR MS-1261/V045			1
37	SD0380551SL	HINGE SCREW D= 3.80 H= 5.5	FOR MS-1261/V045			1
38	B1130051000	FRAME THREAD GUIDE, MIDDLE	FOR MS-1261M/V045			1
39	SS3090610SP	SCREW 9/64-40 L=6	FOR MS-1261M/V045			1
40	12965703	THREAD TAKE-UP TENSION LEVER				1
41	WP0450801SD	WASHER 4.5X10X0.8				1
42	40118508	TENSION RELEASE LEVER SHAFT ASM.				1
43	12966909	TENSION RELEASE LEVER SHAFT		*		1
44	12967006	TENSION RELEASE LEVER		*		1
45	12967105	NEEDLE THREAD TENSION GUIDE		*		1
46	SS6090540SP	SCREW 9/64-40 L= 5.0		*		2
47	SS7090710SP	SCREW 9/64-40 L= 6.8		*		1

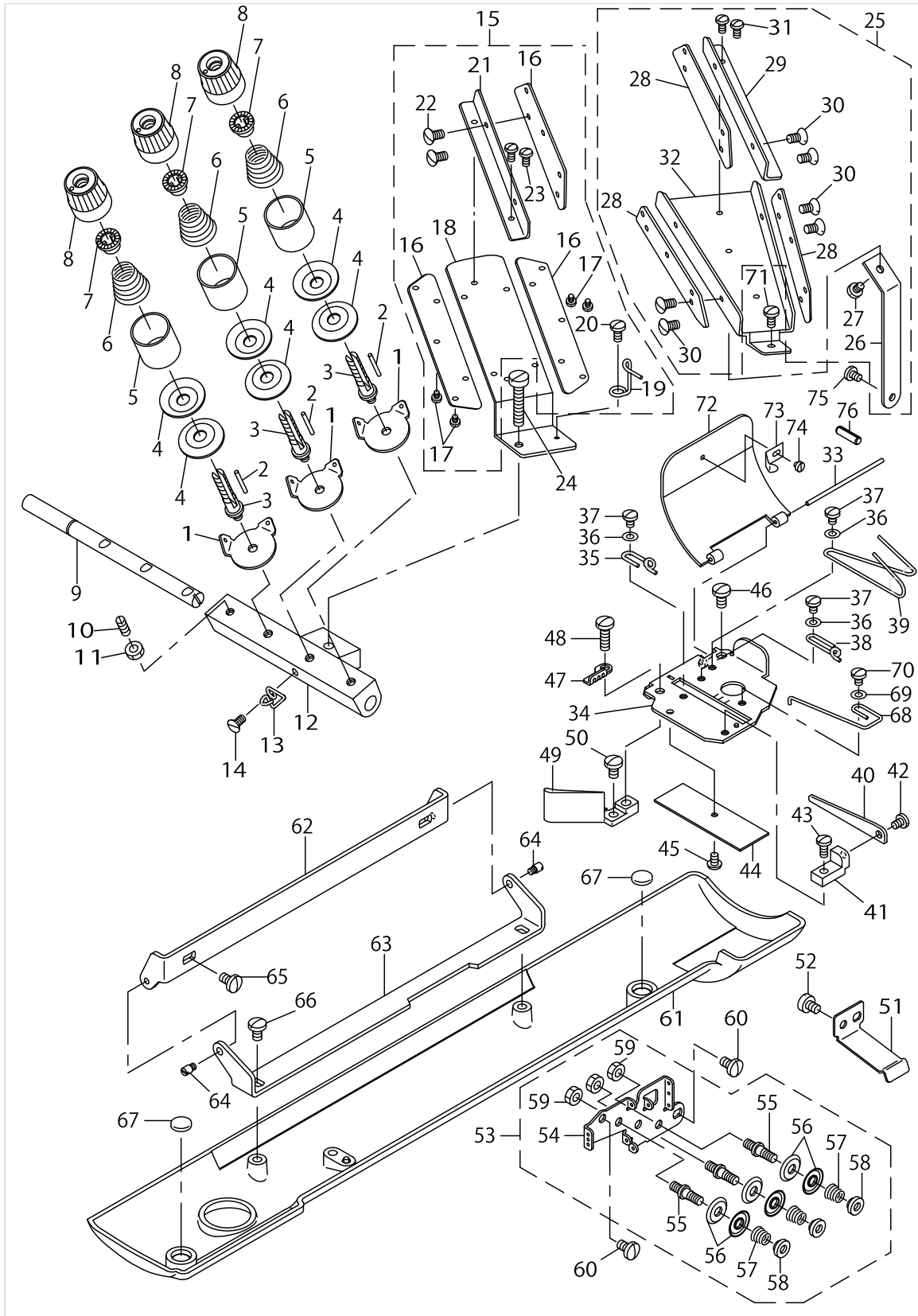
FRAME & MISCELLANEOUS COVER COMPONENTS



FRAME & MISCELLANEOUS COVER COMPONENTS

No.	Parts No.	Parts name	Remarks	Level	Cons	Qty
48	B1805019000	FRONT BUSHING COVER				1
49	B1806019000	GASKET				1
50	SS5090610SP	SCREW 9/64-40 L=6				4
51	SS7740740SP	SCREW 3/8-28 L= 6.5				2
52	RO068190100	RUBBER RING				2
53	12932158	PUSH BUTTON GUIDE ASM.				1
54	12932000	PUSH BUTTON STUD		*		1
55	12932109	PUSH BUTTON GUIDE		*		1
56	B1622541000	SPRING		*		1
57	RO040100210	O-RING		*		1
58	RE0400000K0	E-RING 4		*		1
59	B1806019000	GASKET				1
60	SS7111120SP	SCREW 11/64-40 L=10.5				3
61	B1156019000	RUBBER CUSHION, C				1
62	22920607	ARM THREAD GUIDE B				1
63	SS7110710SP	SCREW 11/64-40 L=7				1
64	12940102	LOOPER THREAD GUIDE PLATE				1
65	SS7110710SP	SCREW 11/64-40 L=7				2
66	B11041910A0	BELT COVER ASM.				1
67	B110419100A	BELT COVER		*		1
68	B110419100B	TOP COVER		*		1
69	B110419100C	BELT COVER PLATE		*		1
70	SS6110480SP	SCREW 11/64-40 L=4.3		*		10
71	CM500300001	DIRECTION LABEL		*		1
72	SS7151210SP	SCREW 15/64-28 L=12				4
73	12943700	BELT GUARD INSTALLING BASE				1
74	SS9284043CP	SCREW 7/16-16 L=40				2
75	12951950	BED COVER ASM.				1
76	12952008	BED COVER GASKET				1
77	SS5110810SP	SCREW 11/64-40 L=8				11
78	SS5820540SP	SCREW 1/2-28 L=5.0				1
79	B1140019000	GASKET				1
80	12970406	FELT A				1
81	40060166	LABEL				1
82	CM301200002	SAFETY LABEL_L				1
83	CM300200001	ATTENTION SEAL	FOR USE IN JAPAN, JE			2
84	TA1600406R0	PLUG				1
85	22901805	GROUND MARK				1
86	SS5091020SP	SCREW 9/64-40 L= 9.5				1

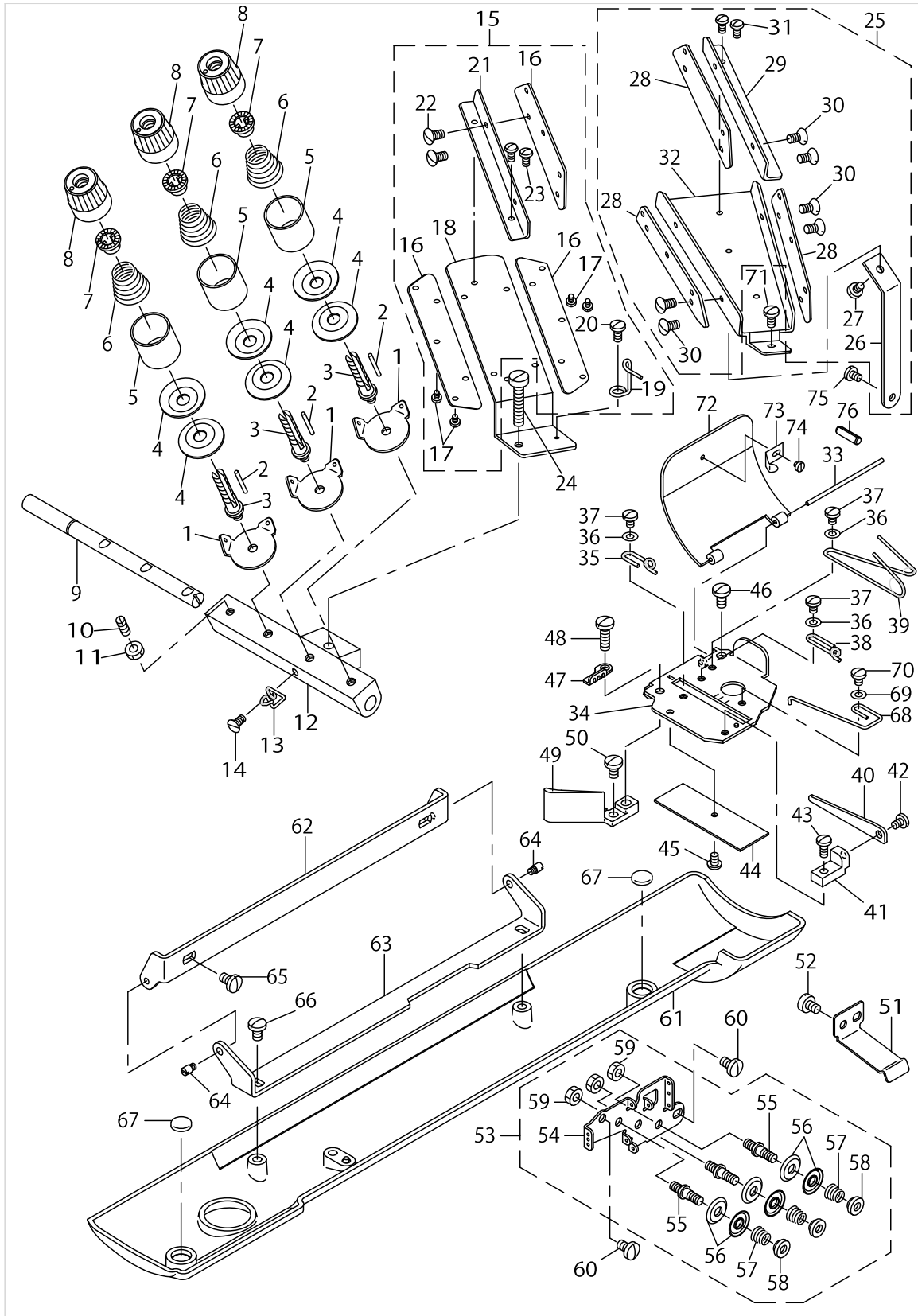
LOOPER THREAD GUIDE COMPONENTS



LOOPER THREAD GUIDE COMPONENTS

No.	Parts No.	Parts name	Remarks	Level	Cons	Qty
1	40085675	TENSION THREAD GUDE				3
2	B2310019000	TENSION RELEASING PIN				3
3	40085671	TENSION POST				3
4	B3126012000	THREAD TENSION DISK				6
5	11957305	TENSION DISC PRESSER				3
6	12938304	TENSION SPRING				3
7	B3112704000	TENSION SPRING BUSHING				3
8	11956703	THREAD TENSION KNOB, RED				3
9	12966602	TENSION RELEASING SHAFT				1
10	SS8111160SP	SCREW 11/64-40 L=11.0				1
11	NS6110310SP	NUT 11/64-40				1
12	40085676	TENSION STUD BUSHING				1
13	12966701	LOWER THREAD GUIDE (LEFT)				1
14	SS7090510SP	SCREW 9/64-40 L= 4.6				1
15	40117113	THREAD GUIDE MOUNTING BRACKET				1
16	B2402019000	THREAD GUIDE		*		3
17	SS7060510SP	SCREW 3/32-56 L=4.8		*		4
18	12967600	THREAD GUIDE MOUNTING BRACKET		*		1
19	B2421019000	THREAD EYELET		*		1
20	SS7090510SP	SCREW 9/64-40 L= 4.6		*		1
21	12967303	THREAD GUIDE FITTING PLATE		*		1
22	SS2060510SP	SCREW 3/32-56 L=4.5		*		2
23	SS5060410SP	SCREW 3/32-56 L=3.5		*		2
24	SS4622340SP	SCREW 3/16-32 L=23				1
25	40117111	THREAD GUIDE BRACKET ASM.				1
26	12967402	THREAD GUIDE BRACKET SUPPORT		*		1
27	SS7090520SP	SCREW 9/64-40 L= 4.5		*		1
28	B2402019000	THREAD GUIDE		*		3
29	12967303	THREAD GUIDE FITTING PLATE		*		1
30	SS2060510SP	SCREW 3/32-56 L=4.5		*		6
31	SS5060410SP	SCREW 3/32-56 L=3.5		*		2
32	12967204	THREAD GUIDE BRACKET		*		1
33	12936902	LOOPER THREAD TAKE-UP PIN				1
34	12935516	TENSION TAKE-UP STRIPPER PLATE				1
35	12966305	LOOPER THREAD GUIDE (C)				1
36	WP0371016SD	WASHER 3.7X8X1				3
37	SS7090530SP	SCREW 9/64-40 L= 4.5				3
38	12966206	LOOPER THREAD GUIDE (B)				1
39	12966107	LOOPER THREAD GUIDE (A)				1
40	12966008	LOOPER THREAD CAM PRESSER				1
41	12935607	CAM HOLDER BRACKET				1
42	SS7090530SP	SCREW 9/64-40 L= 4.5				1
43	SS7090850SP	SCREW 9/64-40 L=8				1
44	12936217	FELT				1
45	SS5090420SP	SCREW 9/64-40 L=3.5				1
46	SS7110840SP	SCREW 11/64-40 L=7.8				1
47	12935805	LOOPER THREAD GUIDE				1

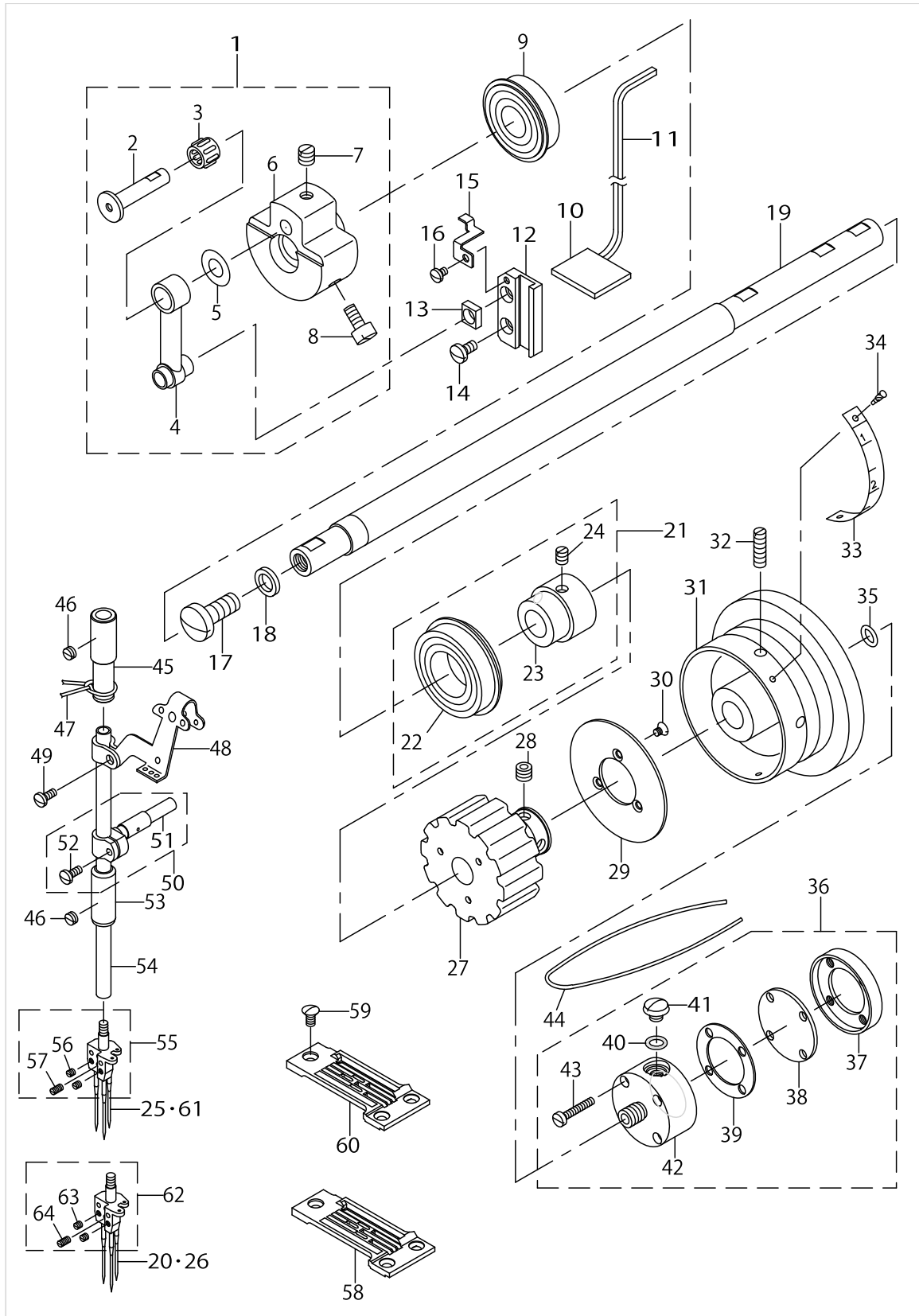
LOOPER THREAD GUIDE COMPONENTS



LOOPER THREAD GUIDE COMPONENTS

No.	Parts No.	Parts name	Remarks	Level	Cons	Qty
48	SS7111410SP	SCREW 11/64-40 L=14				1
49	12936506	STRIPPER PLATE BRACKET				1
50	SS7110710SP	SCREW 11/64-40 L=7				1
51	12922803	COVER SPRING				1
52	SS6110610TP	SCREW 11/64-40 L=6				2
53	12967758	LOOPER THREAD TENSION ASM.				1
54	12939500	TENSION BASE PLATE		*		1
55	12939609	TENSION POST		*		3
56	12939708	TENSION DISC		*		6
57	12939807	TENSION SPRING		*		3
58	12939906	TENSION NUT		*		3
59	NS6110350SP	NUT 11/64-40		*		3
60	SS7110710SP	SCREW 11/64-40 L=7				2
61	12951505	LOOPER THREAD TUBE COVER				1
62	12921904	LOOPER THREAD TUBE COVER HINGE A				1
63	12922001	LOOPER THREAD TUBE COVER HINGE B				1
64	B1534816000	HINGE SCREW				2
65	SS7110840SP	SCREW 11/64-40 L=7.8				2
66	SS7110840SP	SCREW 11/64-40 L=7.8				2
67	40038331	VIBRATION-PROOF RUBBER				2
68	12935904	LOOPER THREAD GUIDE				1
69	WP0371016SD	WASHER 3.7X8X1				1
70	SS7090530SP	SCREW 9/64-40 L= 4.5				1
71	SS7090710SP	SCREW 9/64-40 L= 6.8				1
72	12936803	LOOPER THREAD TAKE-UP COVER				1
73	B2208019000	LOOPER THREAD TAKE-UP COVER SPRING				1
74	SS6060210SP	SCREW 3/32-56 L= 1.9				1
75	SS4090815SP	SCREW 9/64-40 L=8				1
76	PS0500202KP	SPRING PIN 5X20				1

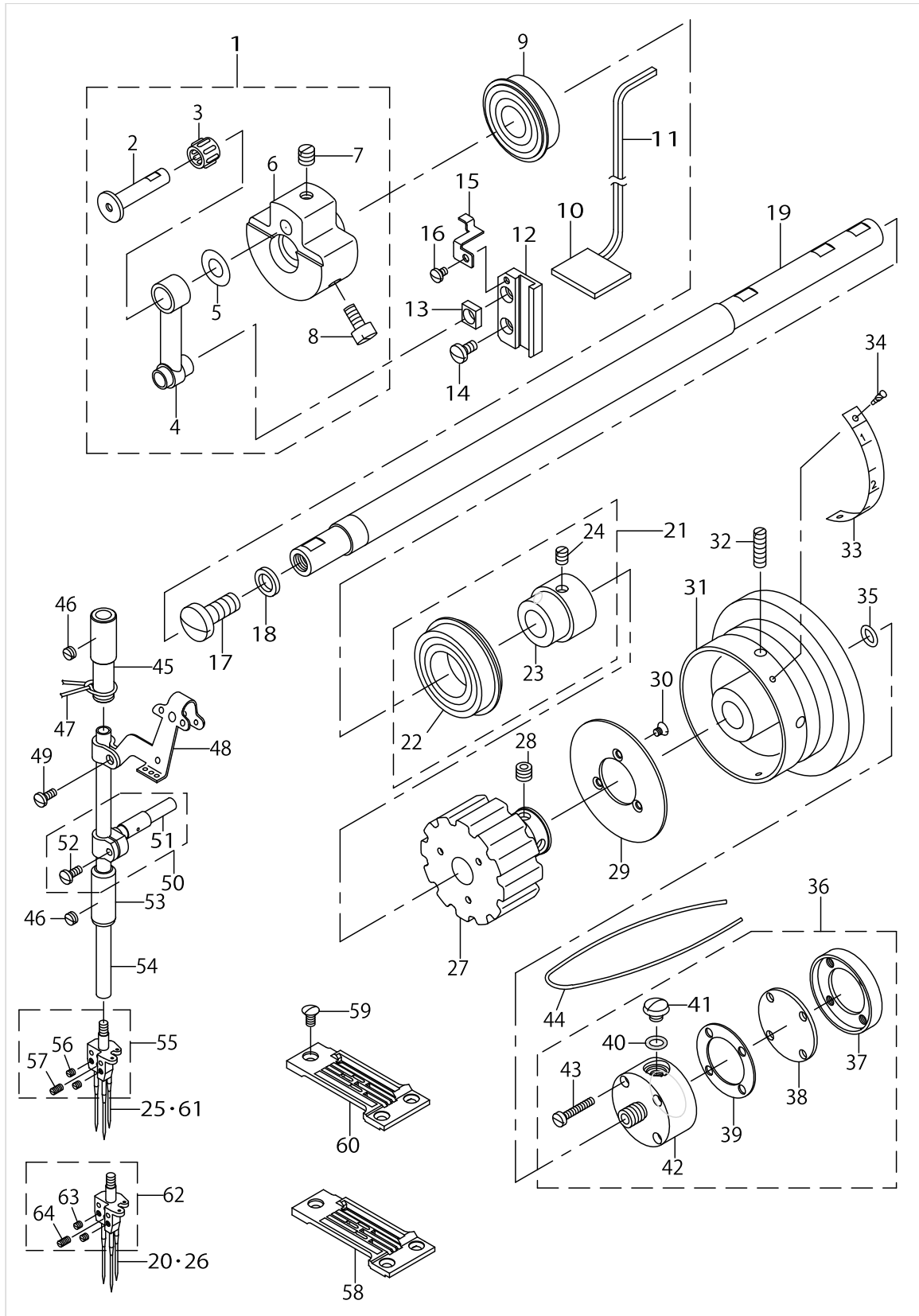
NEEDLE BAR & MAIN SHAFT COMPONENTS



NEEDLE BAR & MAIN SHAFT COMPONENTS

No.	Parts No.	Parts name	Remarks	Level	Cons	Qty
1	B12070260A0	COUNTERWEIGHT ASM.				1
2	B12090190A0	NEEDLE BAR CRANK PIN ASM.		*		1
3	B1236125BA0	NEEDLE BUSHING ASM.	SELECTIVE PART	*		1
4	B1408038000	NEEDLE BAR CRANK ROD, B		*		1
5	B1208019000	WASHER		*		1
6	B1207026000	COUNTERWEIGHT		*		1
7	SS8660410SP	SCREW 1/4-40 L= 4.2		*		2
8	SS6151220SP	SCREW 15/64-28 L=11.5		*		2
9	B1202512000	MAIN SHAFT BUSHING, FRONT				1
10	B3510019000	OIL FELT				1
11	B3541012000	OIL WICK				1
12	B1412038000	SLIDE BLOCK GUIDE				1
13	B1411019000	SLIDE BLOCK GUIDE				1
14	SS7120910SP	SCREW 3/16-28 L=9				2
15	12943106	OIL WICK PRESSER				1
16	SS7090530SP	SCREW 9/64-40 L= 4.5				1
17	SS7740740SP	SCREW 3/8-28 L= 6.5				1
18	B1222019000	PACKING				1
19	12924502	MAIN SHAFT				1
20	MUY128N1900	NEEDLE UYX128GAS-NY #19	FOR MS-1261M/V045			3
21	12924767	BUSHING REAR ASM.				1
22	B1203512000	BUSHING, REAR		*		1
23	12924718	BUSHING		*		1
24	SS8150710SP	SCREW 15/64-28 L=7		*		2
25	MUY128N2100	NEEDLE UYX128GAS-NY #21	FOR MS-1261/V045			3
26	MC380001200	NEEDLE UY128GAS NM120	FOR JE(MS-1261M/V045)			3
27	12924916	SPROCKET WHEEL A				1
28	SS8660522TP	SCREW 1/4-40 L=4.5				2
29	12925004	PULLEY PLATE				1
30	SS1090510SP	SCREW 9/64-40 L=5				3
31	12955209	HAND WHEEL				1
32	SS8152030SP	SCREW 15/64-28 L=20				2
33	12955308	HAND WHEEL SCALE PLATE				1
34	B1161227000	RIVET				2
35	RO098240100	RUBBER RING				1
36	40026875	OIL CUP BODY ASM.				1
37	B3504019000	OIL CUP BODY CAP RETAINER		*		1
38	B3502019000	OIL CUP BODY CAP		*		1
39	B3503019000	OIL CUP BODY CAP GASKET		*		1
40	RO069180100	RUBBER RING		*		1
41	SS5660440SP	SCREW 1/4-40 L= 4.0		*		1
42	40026874	OIL CUP BODY		*		1
43	SS6092120SP	SCREW 9/64-40 L=21.2		*		4
44	CQ252000000	OIL WICK				1
45	B1402026B0G	NEEDLE BAR BUSHING, UPPER				1
46	SS8150310SP	SCREW 15/64-28 L= 3.4				2
47	CQ300000000	OIL WICK				0.1

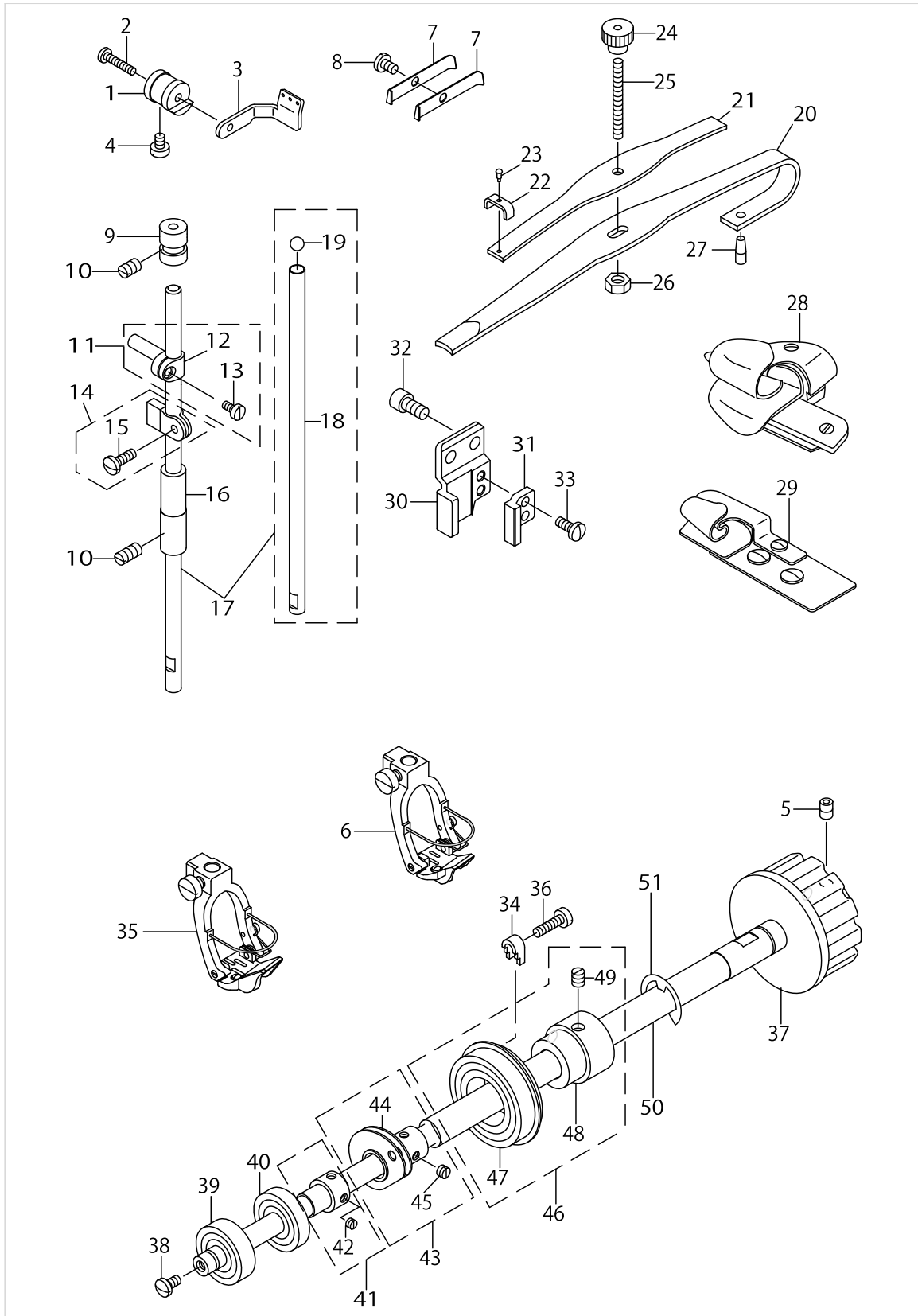
NEEDLE BAR & MAIN SHAFT COMPONENTS



NEEDLE BAR & MAIN SHAFT COMPONENTS

No.	Parts No.	Parts name	Remarks	Level	Cons	Qty
48	B1901026000	THREAD TAKE-UP				1
49	SS7090910TP	SCREW 9/64-40 L= 8.5				1
50	B14090190B0	NEEDLE BAR CLAMP ASM.				1
51	B1418019000	FELT		*		1
52	SS7090910SP	SCREW 9/64-40 L= 8.5		*		1
53	B1404026B0G	NEEDLE BAR BUSHING, LOWER				1
54	B1401019000	NEEDLE BAR				1
55	12956256	NEEDLE CLAMP (1/4") ASM.	REFER TO THE TABLE EXCHANGING PARTS ON P.25			1
56	SS8080310TP	SCREW 1/8-44 L=2.8		*		2
57	SS8080610SP	SCREW 1/8-44 L=5.5		*		1
58	12972808	THROAT PLATE MH (1/4")	REFER TO THE TABLE OF EXCHANGING PARTS ON P.29			1
59	SS2110920TP	SCREW 11/64-40 L=8.5				3
60	12953204	THROAT PLATE XH (1/4")	REFER TO THE TABLE EXCHANGING PARTS ON P.25			1
61	MC380001300	NEEDLE UY128GAS NM130	FOR JE(MS-1261/V045)			3
62	12956256	NEEDLE CLAMP (1/4") ASM.	REFER TO THE TABLE EXCHANGING PARTS ON P.25			1
63	SS8080310TP	SCREW 1/8-44 L=2.8		*		2
64	SS8080610SP	SCREW 1/8-44 L=5.5		*		1

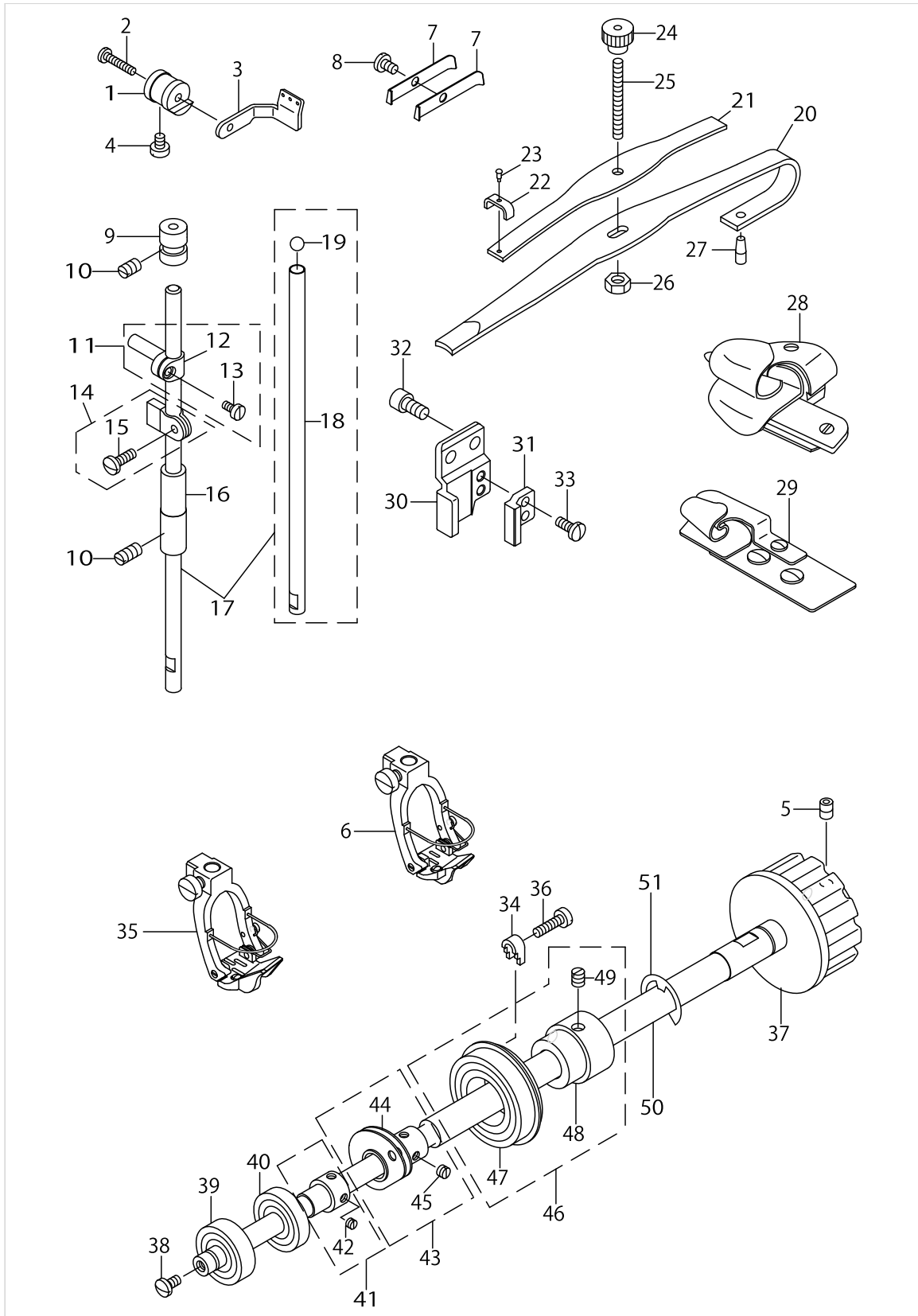
PRESSER BAR & LOWER SHAFT COMPONENTS



PRESSER BAR & LOWER SHAFT COMPONENTS

No.	Parts No.	Parts name	Remarks	Level	Cons	Qty
1	12968103	FITTING SHAFT				1
2	SS7091410SP	SCREW 9/64-40 L=13.5				1
3	12968202	LOOPER THREAD EYELET				1
4	SS6110610TP	SCREW 11/64-40 L=6				1
5	SS8150822TP	SCREW 15/64-28 L=8				2
6	12960084	PRESSER 1/4"MH ASM.,EXPORT	REFER TO THE TABLE OF EXCHANGING PARTS ON P.29			1
7	B1127026000	LOOPER GATE RETAINING SPRING				2
8	SS7090710SP	SCREW 9/64-40 L= 6.8				1
9	B1502019000	PRESSER BAR UPPER BUSHING				1
10	SS8150310SP	SCREW 15/64-28 L= 3.4				2
11	22906457	NEEDLE BAR HOLDER ASM.				1
12	22906408	NEEDLE ROD HOLDER		*		1
13	SS6090670TP	SCREW 9/64-40 L=6		*		1
14	B15040190A0	PRESSER BAR GUIDE BRACKET ASM.				1
15	SS7111110TP	SCREW 11/64-40 L=10.5		*		1
16	12958609	BUSHING,LOWER				1
17	12958559	PRESSER BAR ASM.				1
18	12958500	PRESSER BAR		*		1
19	B1506019000	PRESSER BAR STEEL BALL		*		1
20	B2327019000	PRESSER BAR SPRING				1
21	B2329019000	PRESSER BAR SPRING UPPER				1
22	B2330019000	PRESSER BAR SPRING RETAINER				1
23	A116100100B	RIVET				1
24	B2326019000	PRESSER REGULATING SCREW NUT				1
25	B2324261000	PRESSER REGULATING SCREW				1
26	NS6120310SP	NUT 3/16-28				1
27	B2328019000	PRESSER BAR SPRING PIN				1
28	MAM2990BBBA	HOLDER 1/4XH ASM.	REFER TO THE TABLE OF EXCHANGING PARTS ON P.31			1
29	MAM2970EEBA	FOLDER 1/4MH	REFER TO THE TABLE OF EXCHANGING PARTS ON P.31			1
30	12959300	PRESSER FOOT GUIDE (A)				1
31	12959409	PRESSER FOOT GUIDE (B)				1
32	SM6061202TP	SCREW M6 L=12				2
33	SS7110910TP	SCREW 11/64-40 L= 8.5				2
34	12924809	METAL PRESSER				3
35	12960068	PRESSER 1/4" (ASM) EXPORT	REFER TO THE TABLE OF EXCHANGING PARTS ON P.25			1
36	SS6111610SP	SCREW 11/64-40 L=16				3
37	12933719	SPROCKET WHEEL B				1
38	SS7110830SP	SCREW 11/64-40 L= 7.5				1
39	B1802019000	BALL BEARING, FRONT				1
40	B1803019000	BALL BEARING, INTERMEDIATE				1
41	B18080190A0	SLEEVE ASM.				1
42	SS8110310SP	SCREW 11/64-40 L= 2.8		*		2
43	12966552	LOOPER THREAD CAM ASM.				1
44	12966503	LOOPER THREAD CAM		*		1
45	SS8110310SP	SCREW 11/64-40 L= 2.8		*		2

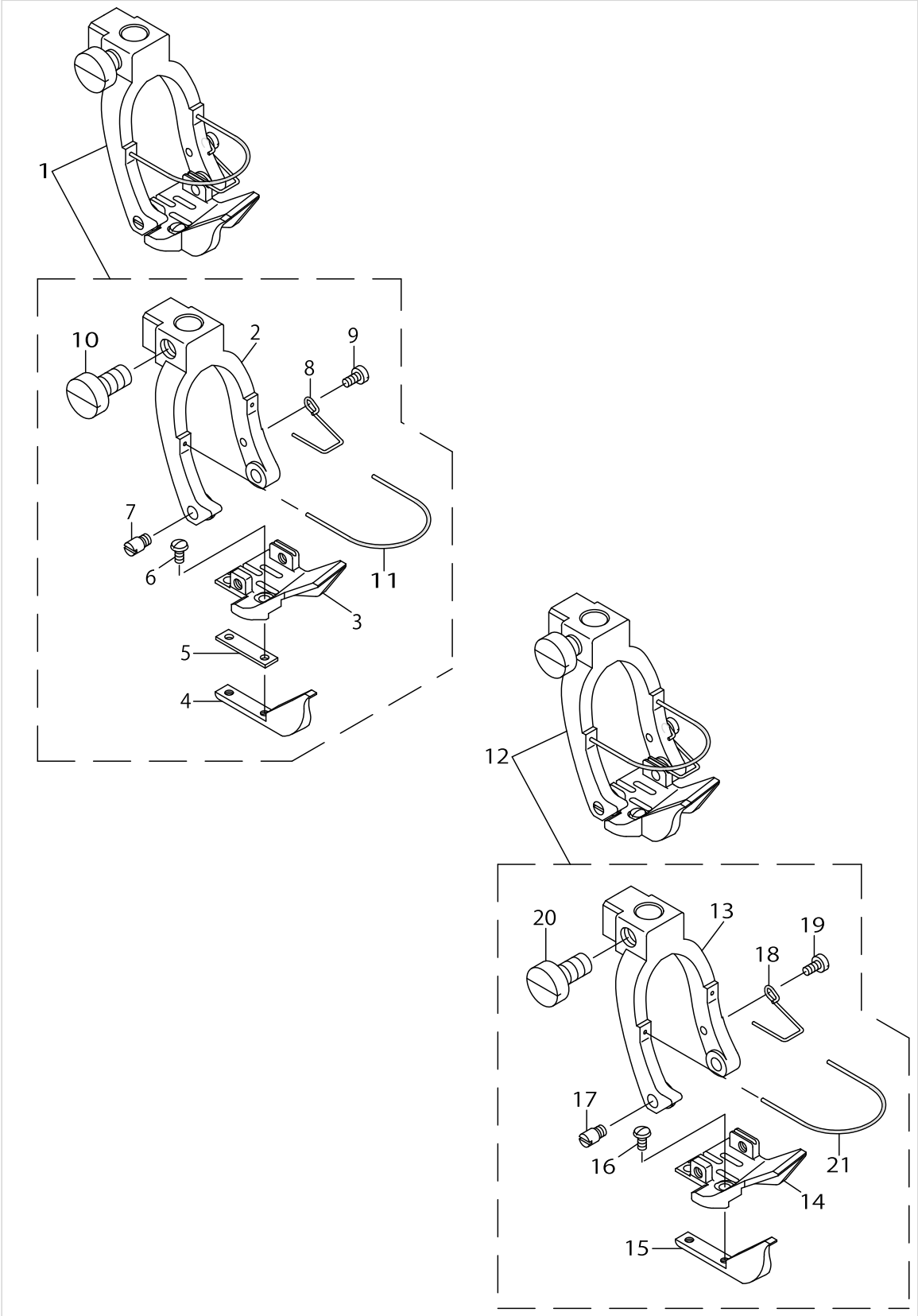
PRESSER BAR & LOWER SHAFT COMPONENTS



PRESSER BAR & LOWER SHAFT COMPONENTS

No.	Parts No.	Parts name	Remarks	Level	Cons	Qty
46	12924767	BUSHING REAR ASM.				1
47	B1203512000	BUSHING, REAR		*		1
48	12924718	BUSHING		*		1
49	SS8150710SP	SCREW 15/64-28 L=7		*		2
50	12965513	LOWER SHAFT				1
51	RE1200000K0	E-RING 12				1

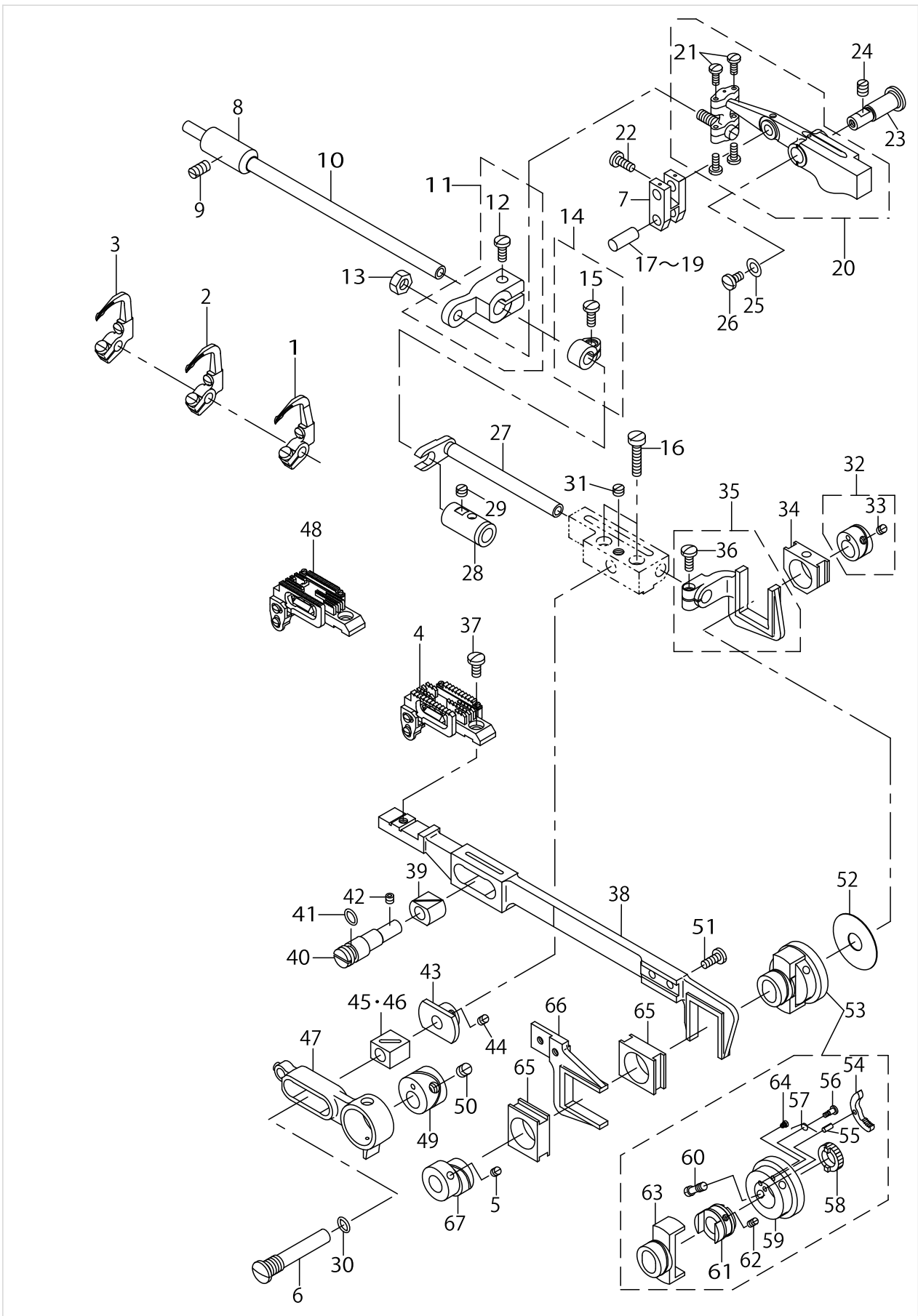
PRESSER FOOT COMPONENTS



PRESSER FOOT COMPONENTS

No.	Parts No.	Parts name	Remarks	Level	Cons	Qty
1	12960068	PRESSER 1/4" (ASM) EXPORT	FOR MS-1261/V045 REFER TO THE TABLE OF EXCHANGING PARTS ON P.25			1
2	12960803	PRESSER FOOT (7/32" _1/4")		*		1
3	12960001	PRESSER (1/4")		*		1
4	12962007	ADJUSTING PRESSER XH		*		1
5	12962106	PRESSER ADJUSTING PLATE (A)		*		1
6	SS5060410SP	SCREW 3/32-56 L=3.5		*		2
7	12962403	HINGE SCREW		*		2
8	12962205	PRESSER SPRING		*		1
9	SS6060410TP	SCREW 3/32-56 L= 3.5		*		1
10	SS6150810SP	SCREW 15/64-28 L=8		*		1
11	12962304	NEEDLE GUARD		*		1
12	12960084	PRESSER 1/4"MH ASM..EXPORT	FOR MS-1261M/V045 REFER TO THE TABLE OF EXCHANGING PARTS ON P.29			1
13	12960803	PRESSER FOOT (7/32" _1/4")		*		1
14	12960001	PRESSER (1/4")		*		1
15	12962007	ADJUSTING PRESSER XH		*		1
16	SS5060310SP	SCREW 3/32-56 L=2.8		*		2
17	12962403	HINGE SCREW		*		2
18	12962205	PRESSER SPRING		*		1
19	SS6060410TP	SCREW 3/32-56 L= 3.5		*		1
20	SS6150810SP	SCREW 15/64-28 L=8		*		1
21	12962304	NEEDLE GUARD		*		1

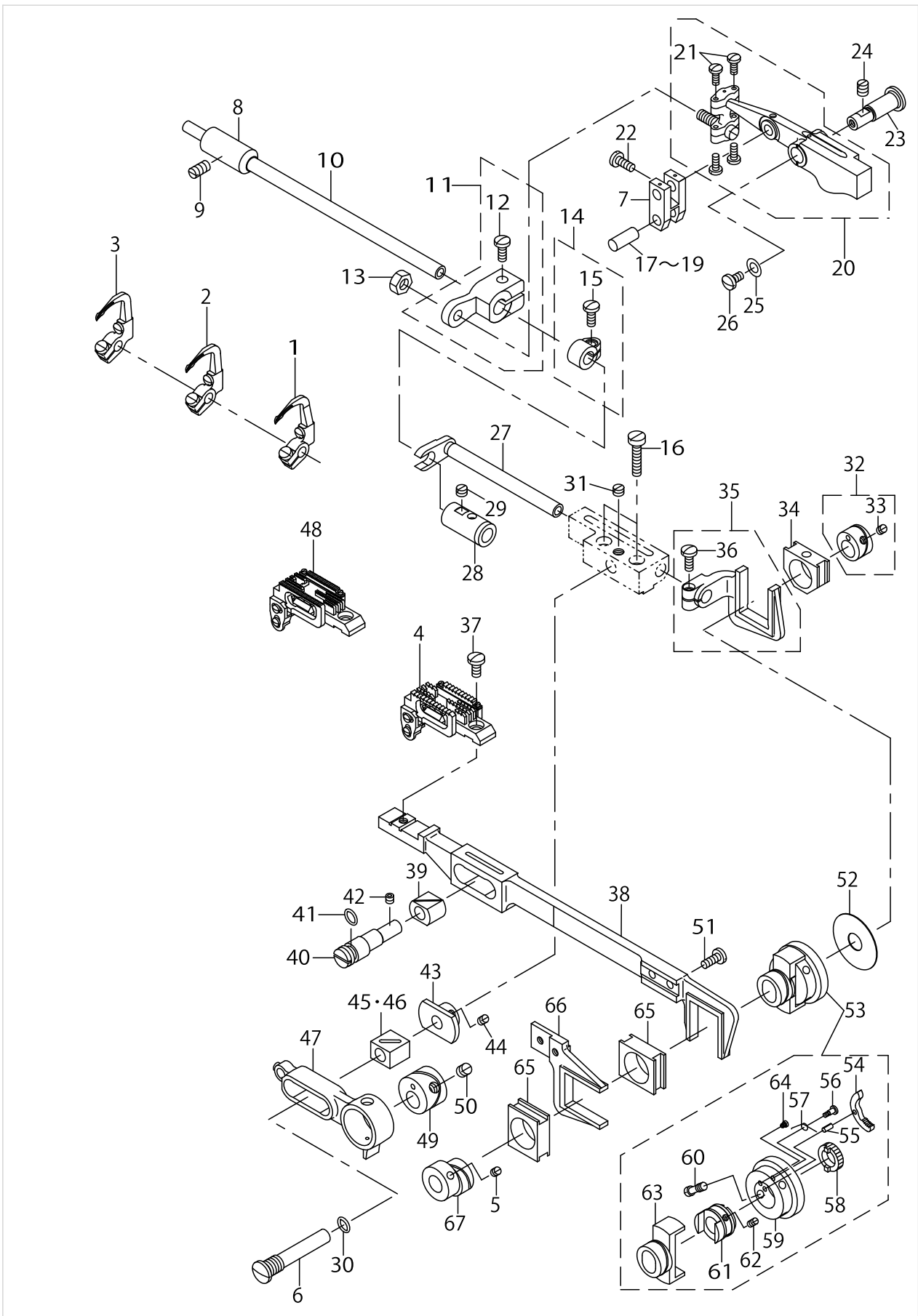
FEED MECHANISM COMPONENTS



FEED MECHANISM COMPONENTS

No.	Parts No.	Parts name	Remarks	Level	Cons	Qty
1	12968558	LOOPER L (1) ASM.	FOR MS-1261/V045,1261M/V045 REFER TO THE TABLE OF EXCHANGING PARTS ON P.25 AND P.29			1
2	12968855	LOOPER R (1) ASM.	FOR MS-1261/V045,1261M/V045 REFER TO THE TABLE OF EXCHANGING PARTS ON P.25 AND P.29			1
3	12969150	LOOPER C (1) ASM.	FOR MS-1261/V045,1261M/V045 REFER TO THE TABLE OF EXCHANGING PARTS ON P.25 AND P.29			1
4	12963351	FEED DOG XH(1/4") ASM.	FOR MS-1261/V045 REFER TO THE TABLE OF EXCHANGING PARTS ON P.25			1
5	SS8660612TP	SCREW 1/4-40 L=6				2
6	B2106026000	SLIDE BLOCK PIN				1
7	B2115191000	FEED ROCKER CONNECTING LINK				1
8	B2502019000	BUSHING, FRONT				1
9	SS8151150SP	SCREW 15/64-28 L=10.5				1
10	12968004	LOOPER SHAFT				1
11	B21230260A0	FEED ROCKER ASM.				1
12	SS7111110TP	SCREW 11/64-40 L=10.5		*		1
13	NS6150310SP	NUT 15/64-28				1
14	B25050190A0	CONNECTION CRANK ASM.				1
15	SS7111110TP	SCREW 11/64-40 L=10.5		*		1
16	SS6122030SP	SCREW 3/16-28 L=20				2
17	B211619100A	FEED CONNECTING LINK PIN A	SELECTIVE PART			2
18	B211619100B	FEED CONNECTING LINK PIN B	SELECTIVE PART			2
19	B2116191000	FEED CONNECTING LINK PIN	SELECTIVE PART			2
20	B21020260A0A	FEED ROCKER ASM.				1
21	SS7090920SP	SCREW 9/64-40 L= 8.5		*		4
22	SS7080510TP	SCREW 1/8-44 L=4.5				4
23	B2107019000	FEED ROCKER SHAFT				1
24	SS8150710SP	SCREW 15/64-28 L=7				1
25	40040608	PACKING				1
26	SS7110830SP	SCREW 11/64-40 L= 7.5				1
27	B2002026000A	LOOPER AVOIDING SHAFT BRACKET				1
28	B2503019000	LOOPER ROCKER SHAFT BUSHING, R				1
29	SS8150310SP	SCREW 15/64-28 L= 3.4				1
30	RO095200100	RUBBER RING				1
31	SS8150410SP	SCREW 15/64-28 L=4				1
32	B20060190A0	LOOPER AVOIDING ECCENTRIC CAM ASM.				1
33	SS8110410TP	SCREW 11/64-40 L= 3.5		*		2
34	B1635191000	SLIDE BLOCK				1
35	B20012610A0	LOOPER AVOIDING SHAFT ASM.				1
36	SS7111110TP	SCREW 11/64-40 L=10.5		*		1
37	SS7621040SP	SCREW 3/16-32 L= 9.5				1
38	B1601026000	FEED BAR				1
39	B1610019000	SLIDE BLOCK				1
40	12962809	ADJUSTING SHAFT				1
41	RO061180100	RUBBER RING				1
42	SS8110422TP	SCREW 11/64-40 L=4				1
43	B2108026000	SLIDE BLOCK STOPPER				1

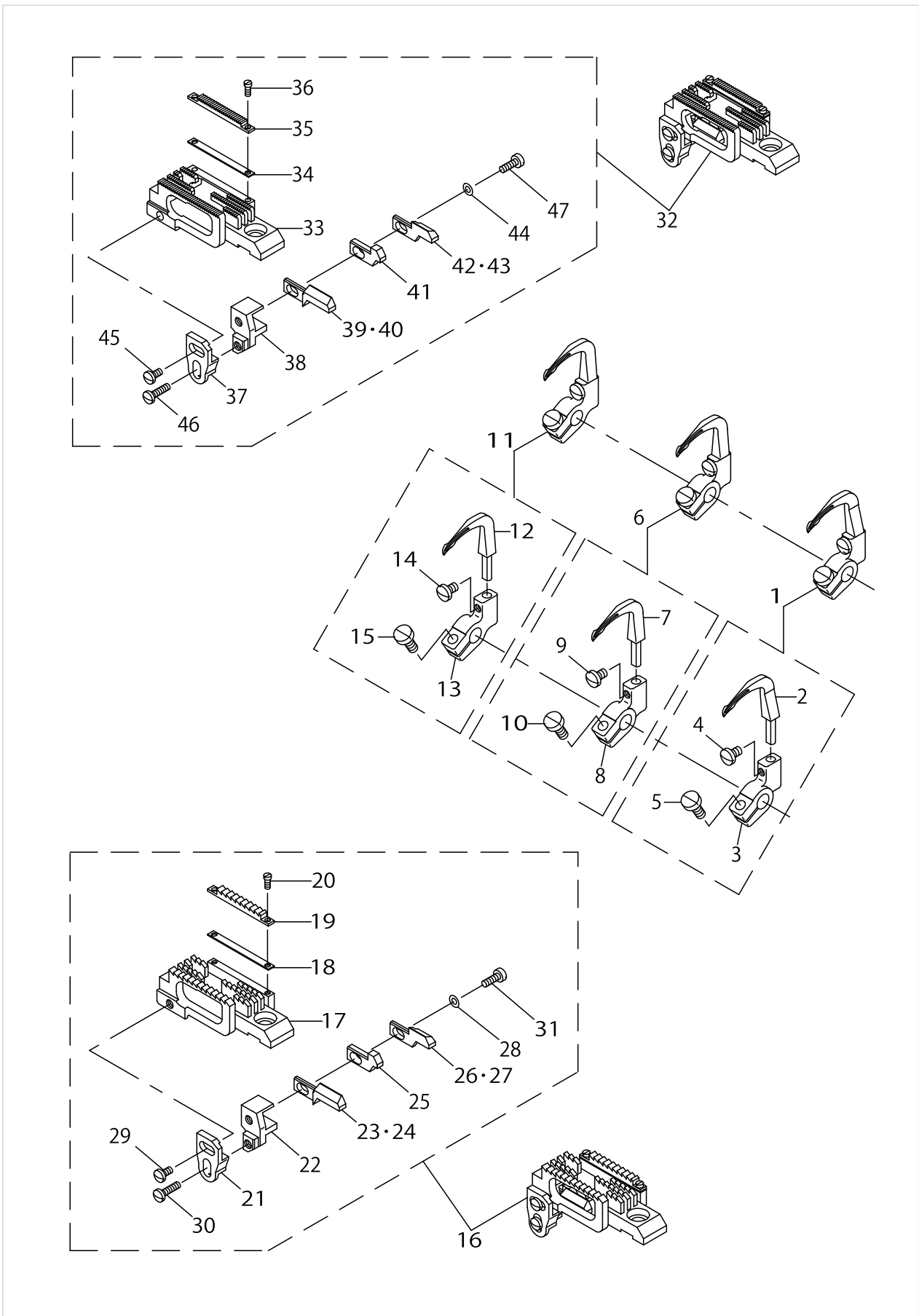
FEED MECHANISM COMPONENTS



FEED MECHANISM COMPONENTS

No.	Parts No.	Parts name	Remarks	Level	Cons	Qty
44	SS8110510SP	SCREW 11/64-40 L=5				1
45	B2105019000	FEED ROCKER SLIDE BLOCK	SELECTIVE PART			1
46	B210501900A	FEED ROCKER SLIDE BLOCK	SELECTIVE PART			1
47	B2101261000A	FEED ROCKER DRIVING LEVER				1
48	12974952	FEED DOG MH(1/4")ASM.	FOR MS-1261M/V045 REFER TO THE TABLE OF EXCHANGING PARTS ON P.29			1
49	B21032610A0	FEED ECCENTRIC CAM ASM.				1
50	SS8660612TP	SCREW 1/4-40 L=6				2
51	SS7111110TP	SCREW 11/64-40 L=10.5				1
52	12931903	BODY CAP				1
53	12963062	FEED ECCENTRIC BASE ASM.				1
54	B1624191000	RATCHET PAWL		*		1
55	PS0250081K0	SPRING PIN 2.5X8		*		1
56	B1626191000	SCREW		*		1
57	B1625191000	RATCHET PAWL SPRING		*		1
58	B1623191000	RATCHET GEAR		*		1
59	12963005	FEED ECCENTRIC		*		1
60	12931606	SCREW		*		1
61	12931507	FEED ECCENTRIC BODY		*		1
62	SS8110410TP	SCREW 11/64-40 L= 3.5		*		2
63	B1621261000A	FEED ECCENTRIC GUIDE		*		1
64	12931705	SCREW		*		1
65	B1606191000	FEED ECCENTRIC SLIDE BLOCK				2
66	B1602019000	FEED LIFTING FORKED CONNECTION				1
67	12962601	FEED ECCENTRIC CAM				1

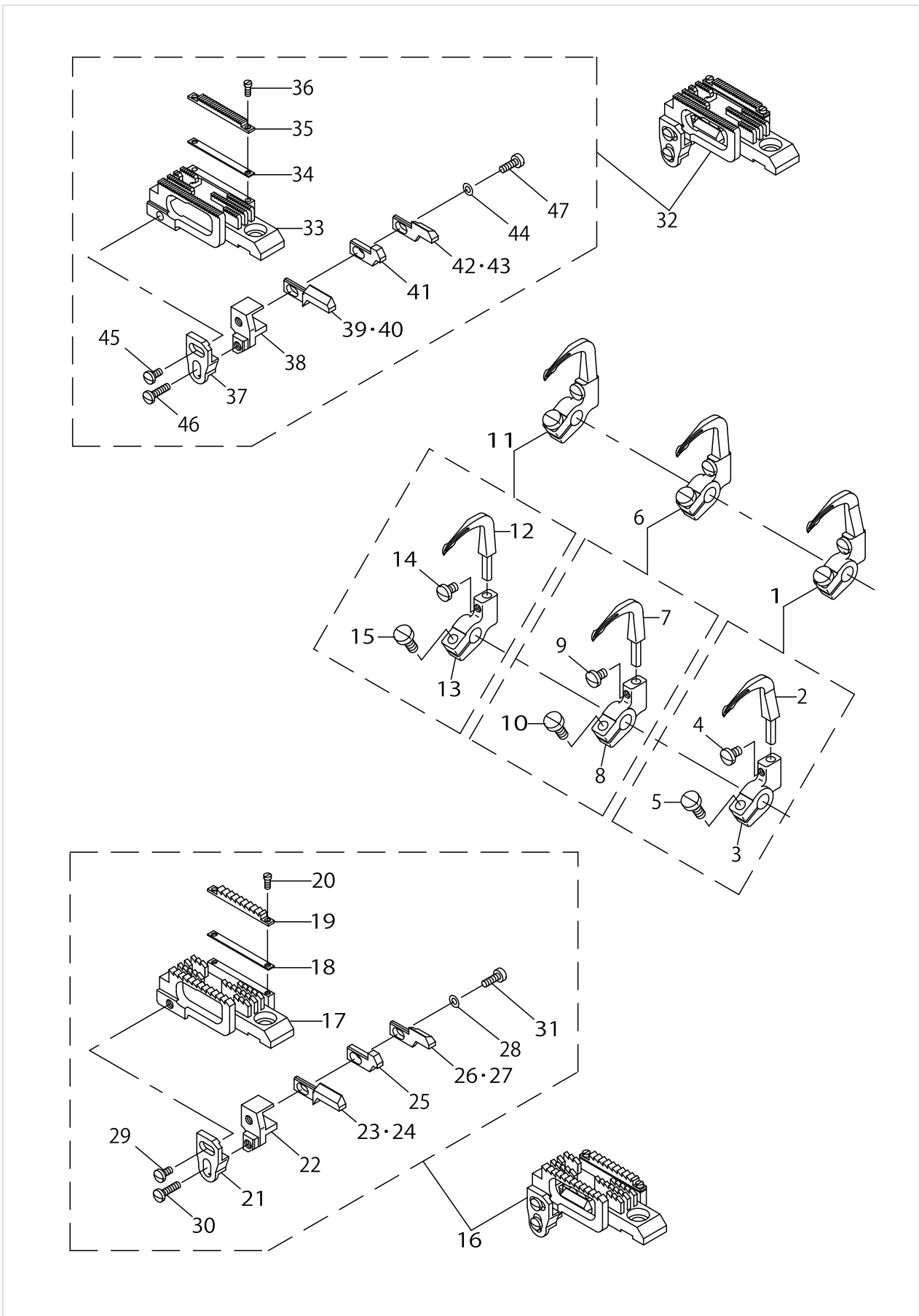
LOOPER & FEED DOG COMPONENTS



LOOPER & FEED DOG COMPONENTS

No.	Parts No.	Parts name	Remarks	Level	Cons	Qty
1	12968558	LOOPER L (1) ASM.	FOR MS-1261/V045,1261M/V045 REFER TO THE TABLE OF EXCHANGING PARTS ON P.25 AND P.29			1
2	12968509	LOOPER L (1)		*		1
3	12942009	LOOPER HOLDER,2		*		1
4	SS7080520SP	SCREW 1/8-44 L=4.9		*		1
5	SS7090910TP	SCREW 9/64-40 L= 8.5		*		1
6	12968855	LOOPER R (1) ASM.	FOR MS-1261/V045,1261M/V045 REFER TO THE TABLE OF EXCHANGING PARTS ON P.25 AND P.29			1
7	12968806	LOOPER R (1)		*		1
8	12969309	LOOPER HOLDER (3)		*		1
9	SS7080520SP	SCREW 1/8-44 L=4.9		*		1
10	SS7090910TP	SCREW 9/64-40 L= 8.5		*		1
11	12969150	LOOPER C (1) ASM.	FOR MS-1261/V045,1261M/V045 REFER TO THE TABLE OF EXCHANGING PARTS ON P.25 AND P.29			1
12	12969101	LOOPER C (1)		*		1
13	12941100	LOOPER HOLDER,1		*		1
14	SS7080520SP	SCREW 1/8-44 L=4.9		*		1
15	SS7090910TP	SCREW 9/64-40 L= 8.5		*		1
16	12963351	FEED DOG XH(1/4") ASM.	FOR MS-1261/V045 REFER TO THE TABLE OF EXCHANGING PARTS ON P.25			1
17	12963302	FEED DOG XH(1/4")		*		1
18	12964102	FEED DOG ADJUSTING PLATE (A)		*		1
19	12964201	ADJUSTING FEED DOG XH		*		1
20	12964300	ADJUSTING FEED DOG SETSCREW		*		2
21	12964409	NEEDLE HOLDER ADJUSTING BASE		*		1
22	12964805	NEEDLE HOLDER (A)		*		1
23	12964508	NEEDLE HOLDER (LEFT)		*		1
24	40080579	NEEDLE POSITIONER (L)	EXCLUSIVE OF 3/8 SIZE	*		1
25	12964607	NEEDLE HOLDER (INSIDE)		*		1
26	12964706	NEEDLE HOLDER (RIGHT)		*		1
27	40080580	NEEDLE POSITIONER (R)	EXCLUSIVE OF 3/8 SIZE	*		1
28	WP0450000SD	WASHER 4.5X8X0.5		*		1
29	SS7090510SP	SCREW 9/64-40 L= 4.6		*		1
30	SS7091110TP	SCREW 9/64-40 L=10.5		*		1
31	SS7091110TP	SCREW 9/64-40 L=10.5		*		1
32	12974952	FEED DOG MH(1/4")ASM.	FOR MS-1261M/V045 REFER TO THE TABLE OF EXCHANGING PARTS ON P.29			1
33	12974903	FEED DOG MH(1/4")		*		1
34	12964102	FEED DOG ADJUSTING PLATE (A)		*		1
35	12975504	ADJUSTING FEED DOG MH		*		1
36	12964300	ADJUSTING FEED DOG SETSCREW		*		2
37	12964409	NEEDLE HOLDER ADJUSTING BASE		*		1
38	12964805	NEEDLE HOLDER (A)		*		1
39	12964508	NEEDLE HOLDER (LEFT)		*		1
40	40080579	NEEDLE POSITIONER (L)	EXCLUSIVE OF 3/8 SIZE	*		1
41	12964607	NEEDLE HOLDER (INSIDE)		*		1
42	12964706	NEEDLE HOLDER (RIGHT)		*		1
43	40080580	NEEDLE POSITIONER (R)	EXCLUSIVE OF 3/8 SIZE	*		1

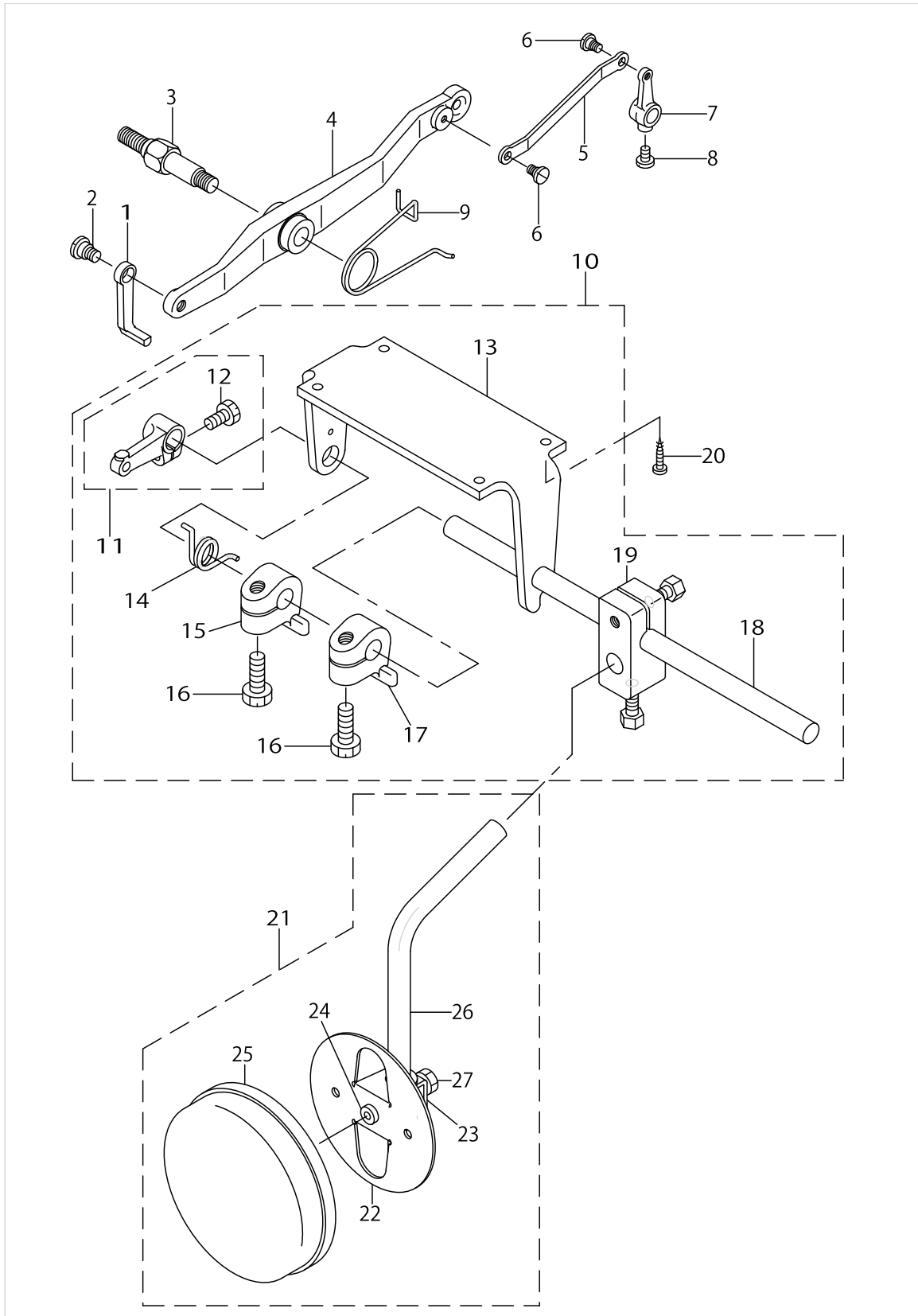
LOOPER & FEED DOG COMPONENTS



LOOPER & FEED DOG COMPONENTS

No.	Parts No.	Parts name	Remarks	Level	Cons	Qty
44	WP045000SD	WASHER 4.5X8X0.5		*		1
45	SS7090510SP	SCREW 9/64-40 L= 4.6		*		1
46	SS7091110TP	SCREW 9/64-40 L=10.5		*		1
47	SS7091110TP	SCREW 9/64-40 L=10.5		*		1

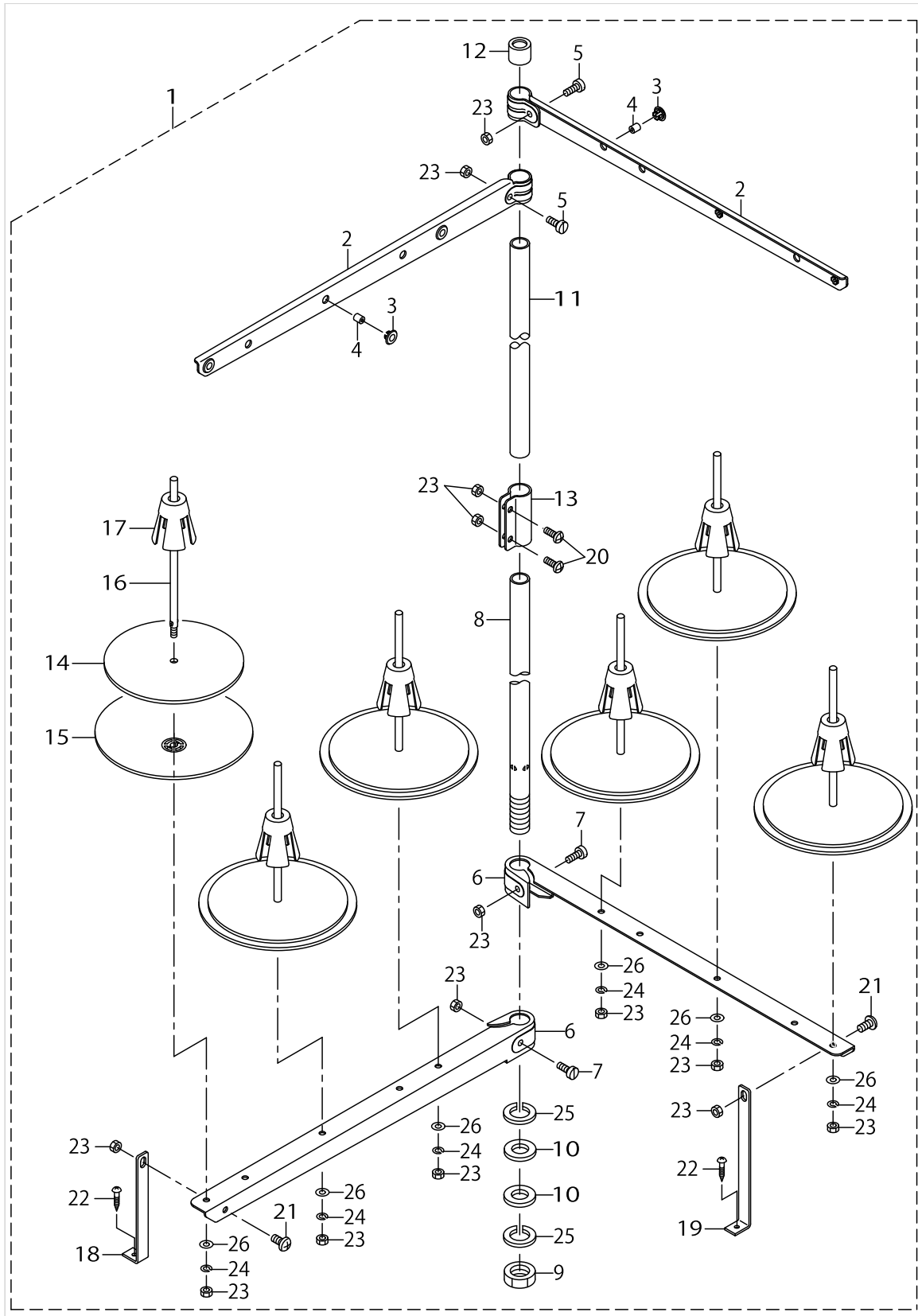
KNEE LIFTER COMPONENTS



KNEE LIFTER COMPONENTS

No.	Parts No.	Parts name	Remarks	Level	Cons	Qty
1	B2322019000	PRESSERBARLIFTINGBRACKETLIFTER				1
2	SD0790431SP	HINGE SCREW D= 7.94 H= 4.3				1
3	B3701019000	HINGE SCREW				1
4	B231919100A	PRESSER BAR LIFTING LEVER				1
5	B2315019000	TENSIONRELEASINGCONNECTINGLINK				1
6	SD0450211SP	HINGE SCREW D= 4.50 H= 2.1				2
7	B2317019000	TENSION RELEASING SHAFT CRANK				1
8	SS7110710SP	SCREW 11/64-40 L=7				1
9	B2321019000	PRESSER BAR LIFTING LEVER SPRING				1
10	B81011910A0	KNEE LIFTER ASM.				1
11	B8102191000	KNEE LIFTER LEVER		*		1
12	SS9151210TP	SCREW 15/64-28 L=11.8		*		1
13	B8101191000	KNEE DRIVING SHAFT MOUNTING		*		1
14	B8511180000	SPRING		*		1
15	12944906	SPRING HOOK		*		1
16	SS9182010TE	BOLT 9/32-20 L=20		*		2
17	12944906	SPRING HOOK		*		1
18	B3421012000	KNEE PRESS ROD		*		1
19	22932453	BRACKET ASM.		*		1
20	SK3452500SC	WOOD SCREW D=4.5 L=25				4
21	22934251	KNEE PAD PLATE ASM.				1
22	22934202	KNEE PAD PLATE		*		1
23	22934301	KNEE PAD PLATE SUPPORT		*		1
24	22934400	KNEE PAD PLATE RUBBER		*		1
25	22934509	KNEE PAD PLATE COVER		*		1
26	22934608	KNEE PAD UPRIGHT SHAFT		*		1
27	SM9061203SE	SCREW M6 L=12		*		1

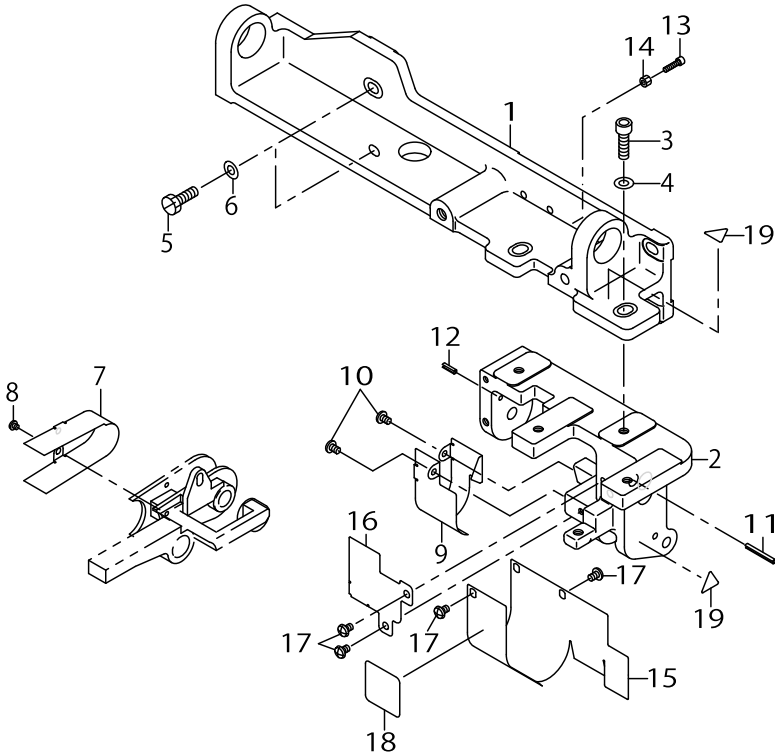
THREAD STAND COMPONENTS



THREAD STAND COMPONENTS

No.	Parts No.	Parts name	Remarks	Level	Cons	Qty
1	40111348	THREAD STAND ASM.				1
2	40106575	SPOOL REST LONG ARM UPPER		*		2
3	40085795	THREAD GUIDE BUSHING		*		6
4	40085794	THREAD GUIDE		*		6
5	40096327	SPOOL REST ARM UPPER SCREW		*		2
6	40106574	SPOOL REST LONG ARM LOWER		*		2
7	40096326	SPOOL REST ARM LOWER SCREW		*		2
8	40085784	SPOOL REST ROD LOWER		*		1
9	40096325	SPOOL REST ROD NUT		*		1
10	40085796	SPOOL REST ROD RUBBER CUSHION		*		2
11	40085785	SPOOL REST ROD UPPER		*		1
12	40085793	SPOOL REST ROD RUBBER CAP		*		1
13	40085792	SPOOL REST ROD JOINT		*		1
14	40085789	SPOOL REST CUSHION		*		6
15	40085788	SPOOL REST		*		6
16	40085790	SPOOL PIN		*		6
17	40085791	SPOOL RETAINER		*		6
18	40106577	SPOOL REST ARM LOWER A		*		1
19	40106578	SPOOL REST ARM LOWER B		*		1
20	SM4051405SE	SCREW M5 L=14		*		2
21	SM4051001SE	SCREW M5 L=10		*		2
22	SK3412001SE	WOOD SCREW D=4.1 L=20		*		2
23	NM6050001SE	NUT M5		*		14
24	WP0531001SC	WASHER M5		*		6
25	WP1612616SE	WASHER 16X30X2.6		*		2
26	WS0510002KN	SPRING WASHER M5		*		6

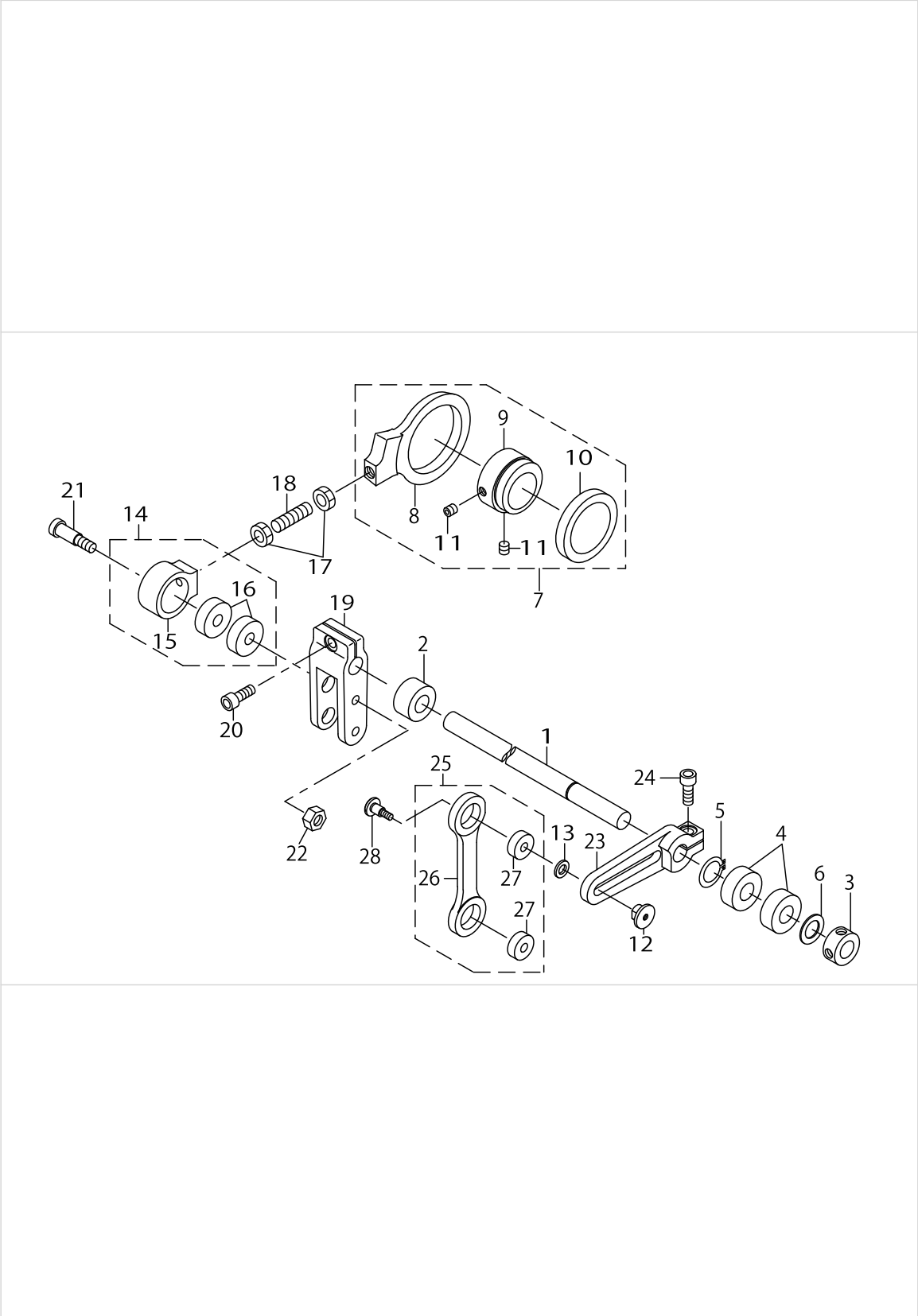
FRAME & COVER COMPONENTS



FRAME & COVER COMPONENTS

No.	Parts No.	Parts name	Remarks	Level	Cons	Qty
1	MAV04501000	MAIN BASE				1
2	MAV04502000	CLUTCH BASE				1
3	SM6062002TP	SCREW M6 L=20				2
4	WP0641600SC	WASHEW 6.4X12.5X1.6				2
5	SM9061850SC	SCREW M6 L=18				4
6	WP0641600SC	WASHEW 6.4X12.5X1.6				4
7	MAV04503000	ROLLER COVER				1
8	SM5030355SE	SCREW				2
9	MAV04504000	INTERMEDIATE PULLEY COVER				1
10	SM5040655SN	SCREW				3
11	PS0300242K0	SPRING PIN 3.0X24				1
12	PS0300102K0	SPRING PIN 3.0X10				1
13	SM6031202TP	SCREW M3X0.5 L=12				1
14	NM6030003SC	NUT M3				1
15	40138862	CLUTCH COVER A				1
16	40138863	CLUTCH COVER B				1
17	SM5040655SN	SCREW				5
18	MAV04507000	MODEL PLATE				1
19	CM300200001	ATTENTION SEAL	FOR USE IN JAPAN, JE			2

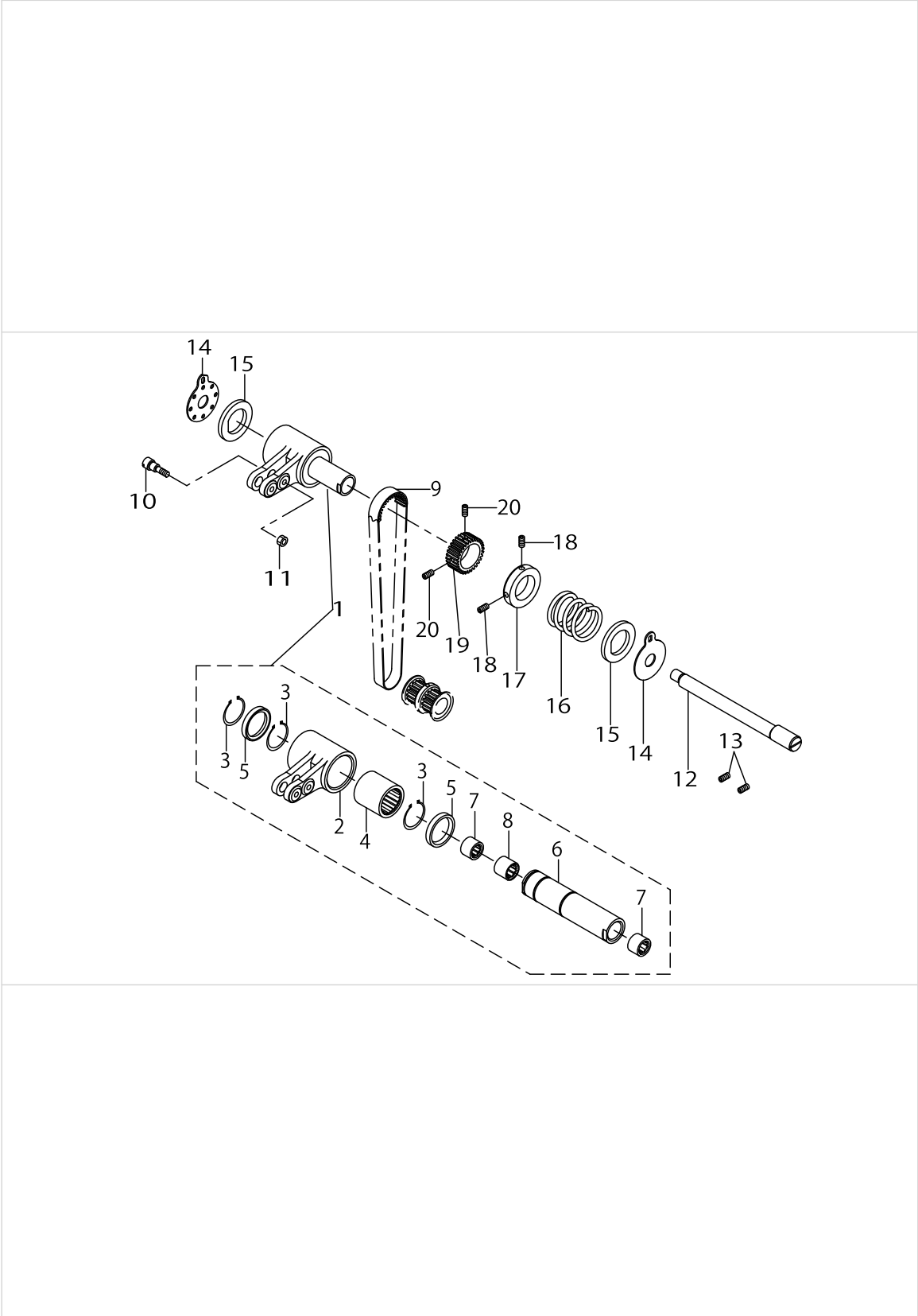
DRIVE COMPONENTS



DRIVE COMPONENTS

No.	Parts No.	Parts name	Remarks	Level	Cons	Qty
1	MAV04515000	ROCKING SHAFT				1
2	SB212000100	BEARING				1
3	CS1201010SH	THRUST COLLAR ASM. D=12 W=10				1
4	SB112000500	BEARING				2
5	RC1200001KP	C-SHAPED SNAP RING				1
6	WP1221016SP	WASHER				1
7	MAV045160B0	ROCKING CRANK ASM., B				1
8	MAV04516000	ROCKING CRANK		*		1
9	MAV04517000	ECCENTRIC SHAFT		*		1
10	SB135000300	BEARING		*		1
11	SM8060602TP	SCREW M6X6		*		2
12	MAV04522000	ADJUSTING PIN				1
13	WP0641600SC	WASHEW 6.4X12.5X1.6				1
14	MAV045180A0	ROCKING CRANK HOUSING ASM.				1
15	MAV04518000	ROCKING CRANK HOUSING		*		1
16	SB108000600	BEARING		*		2
17	NM6080003SC	NUT M8				2
18	SM8082502TP	SCREW				1
19	MAV04519000	ROCKING ROD				1
20	SM6061602TP	SCREW M6 L=16				1
21	SD0801606SH	STEP-SCREW				1
22	NM6060003SC	NUT M6				1
23	MAV04520000	ADJUSTING ROD				1
24	SM6061602TP	SCREW M6 L=16				1
25	MAV045210A0	JOINT ROD ASM.				1
26	MAV04521000	JOINT ROD		*		1
27	SB106000200	BEARING 6X17		*		2
28	40076305	ADJUSTING_SHAFT				1

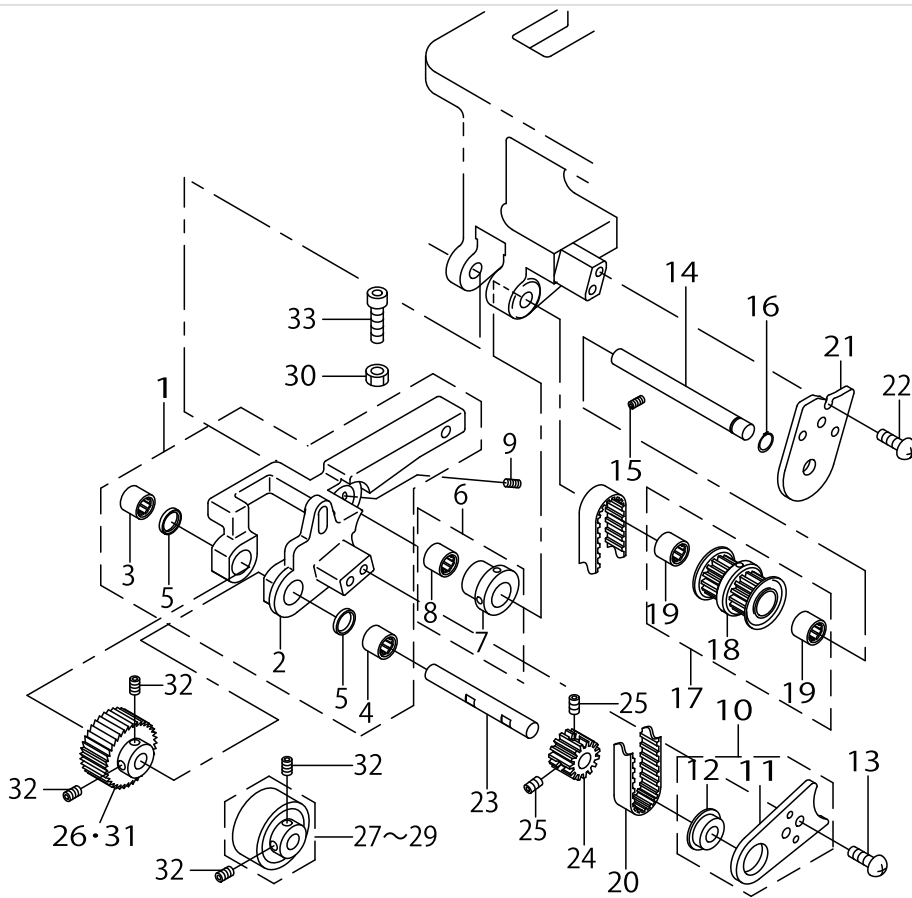
CLUTCH COMPONENTS



CLUTCH COMPONENTS

No.	Parts No.	Parts name	Remarks	Level	Cons	Qty
1	40138864	CLUTCH CASE ASM.				1
2	40138860	CLUTCH CASE		*		1
3	RC1851217KP	C-RING		*		3
4	MAV04524000	ROLLER CLUTCH		*		1
5	MAV04534000	CLUTCH OIL SHIEL		*		2
6	MAV04526000A	CLUTCH ROCKING SHAFT		*		1
7	SB310000300	BALL BEARING		*		2
8	SB310000700	BALL BEARING		*		1
9	MAV04533000	CLUTCH TIMING BELT				1
10	SD0600596SH	STEP-SCREW				1
11	NM6040003SC	NUT M4				1
12	MAV04527000	CLUTCH SHAFT				1
13	SM8050602TP	SCREW M5 L=6				2
14	40011122	BRAKE PLATE				2
15	MAV04529000	BRAKE WASHER				2
16	MAV04530000	BRAKE SPRING				1
17	MAV04531000	CLUTCH BRAKE COLLER				1
18	SM8040602TP	SCREW M4X0.7 L=6				2
19	MAV04532000	CLUTCH PULLEY				1
20	SM8040302TP	SETSCREW				2

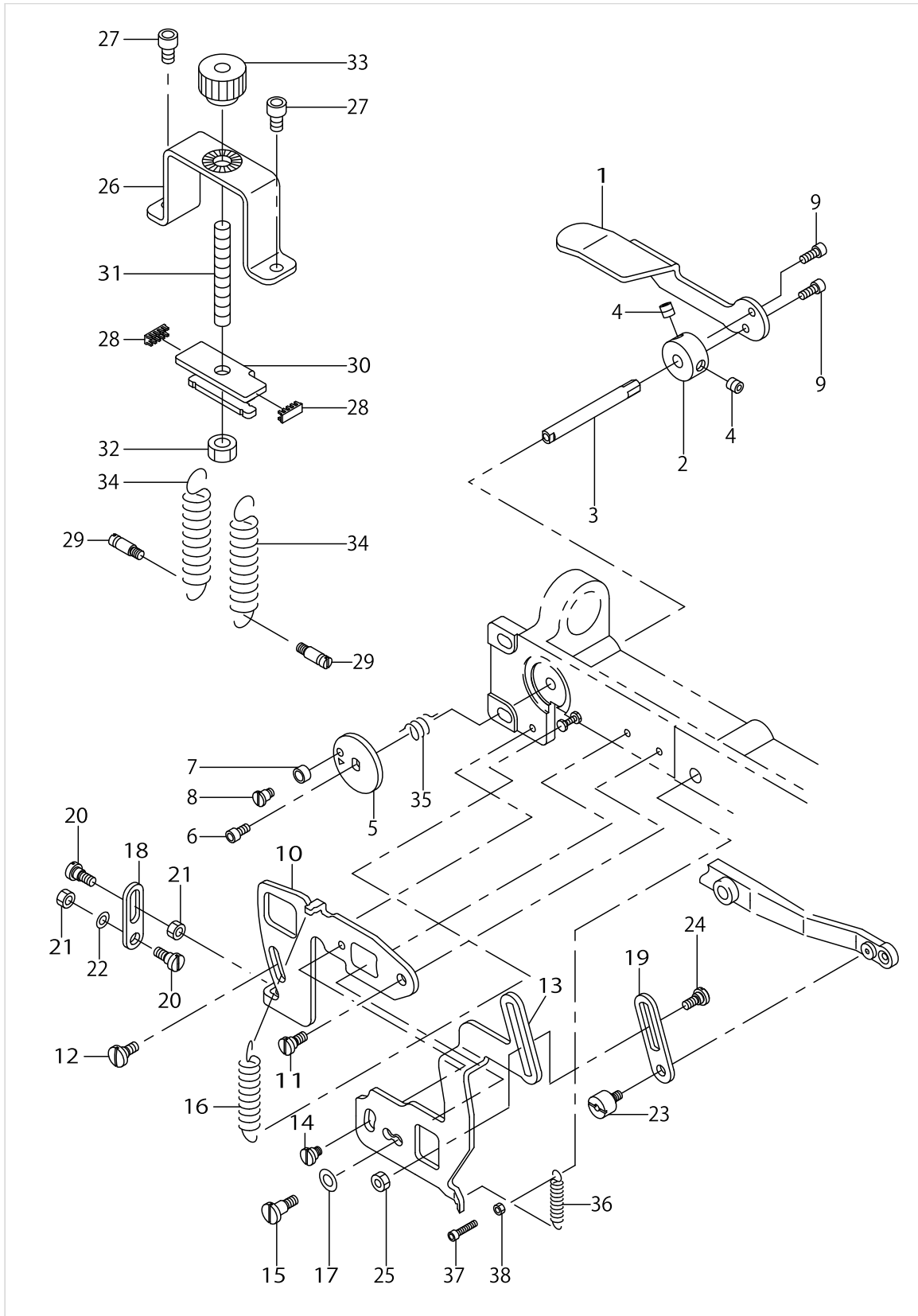
ROLLER DRIVE COMPONENTS



ROLLER DRIVE COMPONENTS

No.	Parts No.	Parts name	Remarks	Level	Cons	Qty
1	MAV045350A0	ROLLER BASE ASM.				1
2	MAV04535000	ROLLER BASE		*		1
3	SB307000500	BEARING		*		1
4	SB307000400	BEARING		*		1
5	MAV04546000	ROLLER SHAFT OIL SHIEL		*		2
6	MAV045360A0	ECCENTRIC COLLER ASM.				1
7	MAV04536000	ROLLER BASE ECCENTRIC COLLER		*		1
8	SB307000400	BEARING		*		1
9	SM8040402TP	SCREW M4X0.7 L=4				1
10	MAV045470A0	ROLLER SHAFT PLATE ASM.				1
11	MAV04547000	ROLLER SHAFT PLATE		*		1
12	SB107000100	BEARING		*		1
13	SM6040802TP	SCREW M4X0.7 L=8				2
14	MAV04537000	PULLEY SHAFT				1
15	SM8050502TP	SCREW M5 L=5				1
16	RC0650811KP	RETAINING RING				1
17	MAV045380B0	INTERMEDIATE PULLEY ASM.				1
18	MAV045380A0	INTERMEDIATE PULLEY ASM.		*		1
19	SB307000400	BEARING		*		2
20	MAV04541000	ROLLER TIMING BELT				1
21	40138861	SUPPORT PLATE				1
22	SM6040802TP	SCREW M4X0.7 L=8				2
23	MAV04543000	ROLLER SHAFT				1
24	MAV04544000	ROLLER PULLEY				1
25	SM8040602TP	SCREW M4X0.7 L=6				2
26	MAV04545000	STEEL ROLLER	SELECTIVE PART			1
27	MAV045500A0	URETHANE ROLLER ASM.	SELECTIVE PART			1
28	40062288	URETHANE ROLLER (80) ASM.	FOR OPTIONAL PART			1
29	40065076	URETHANE ROLLER (70) ASM.	FOR OPTIONAL PART			1
30	NM6060003SC	NUT M6				1
31	MAV0454500D	STEEL ROLLER	FOR OPTIONAL PART			1
32	SM8040402TP	SCREW M4X0.7 L=4				2
33	SM6062002TP	SCREW M6 L=20				1

PRESSER COMPONENTS

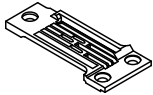
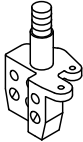



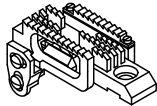



PRESSER COMPONENTS

No.	Parts No.	Parts name	Remarks	Level	Cons	Qty
1	MAV04555000	PRESSER LIFTING LEVER				1
2	MAV04556000	PRESSER LIFTING LEVER COLLER				1
3	MAV04557000	PRESSER LIFTING SHAFT				1
4	SM8060602TP	SCREW M6X6				2
5	MAV04558000	PRESSER LIFTING CAM PLATE				1
6	SM6040802TP	SCREW M4X0.7 L=8				1
7	D2587L8WB00	ROLLER				1
8	SD0550451SP	HINGE SCREW				1
9	SM6041002TP	SCREW M4 L=10				2
10	MAV04559000	PRESSER LIFTING PLATE				1
11	SD0640325SP	HINGE SCREW				1
12	SD0600361SP	HINGE SCREW D=6 H=3.6				1
13	MAV04560000	PRESSER LIFTING JOINT PLATE				1
14	SD0640321TP	HINGE SCREW D=6.35 H=3.2				1
15	SD0640751SP	HINGE SCREW D= 6.35 H= 7.5				1
16	B2056781000	BLOCKING ARM SPRING				1
17	WP0651056SH	WASHER 6.5X11X1				1
18	MAV04561000	PRESSER LIFTING ROD				1
19	MAV04616000	PRESSER LIFTING LINK				1
20	SD0600402TP	HINGE SCREW D= 6 H= 4				2
21	NS6620310SP	NUT 3/16-32				2
22	WP0480856SP	WASHER 4.8X8.4X0.8				1
23	MAV04562000	KNEE LIFTER LEVER COLLER				1
24	SD0600271SP	HINGE SCREW D= 6 H= 2.7				1
25	NS6110420SP	NUT 11/64-40				1
26	MAV04564000	PRESSER LIFTING BASE				1
27	SM6061002TP	SCREW M6 L=10				2
28	MAV04565000	SPRING PLATE COVER				2
29	26226407	TENSION SPRING HOOK				2
30	MAV04566000	SPRING PLATE				1
31	MAV04567000	PRESSER ADJUSTING SCREW				1
32	NM6080001SC	NUT M8X1.25				1
33	MAV04568000	PRESSER ADJUSTING KNOB				1
34	MAV04569000	PRESSER SPRING				2
35	MAV04563000	PRESSER LIFTING LEVER SPRING				1
36	13515606	SPRING				1
37	SM6031402TP	SCREW				1
38	NM6030003SC	NUT M3				1

TABLE OF EXCHANGING GAUGE PARTS (1)

MS-1261/V045 (For Extra heavy-weight)
MS-1261/V045 (極厚物用)

Description 品名			Gauge set (with finger guard) ゲージセット (指ガード付)		Throat plate 針板		Needle clamp asm. 針留(組)		Presser foot asm. (with finger guard) 押さえ(組) (指ガード付)	
Needle gauge size 針幅										
Code ゲージ 記号										
	inch	mm	Ref.No	Part No.	Ref.No	Part No.	Ref.No	Part No.	Ref.No	Part No.
E	7/32	5.6	1	12953360	6	12953303	11	12956355	16	12960167
F	1/4	6.4	2	12953261	7	12953204	12	12956256	17	12960068
G	9/32	7.2	3	12953469	8	12953402	13	12956454	18	12960266
H	5/16	8.0	4	12953568	9	12953501	14	12956553	19	12960365
K	3/8	9.5	5	12953667	10	12953600	15	12956652	20	12960464

Description 品名			Feed dog asm. 送り歯(組)		Looper asm. (L) ルーバ(L)(組)			Looper asm. (R) ルーバ(R)(組)			Looper asm. (C) ルーバ(C)(組)		
Needle gauge size 針幅													
Code ゲージ 記号													
	inch	mm	Ref.No	Part No.	Ref.No	Part No.	Mark No	Ref.No	Part No.	Mark No	Ref.No	Part No.	Mark No
E	7/32	5.6	21	12963450	26	12968558	1	28	12968855	1	30	12969150	1
F	1/4	6.4	22	12963351		↑	1		↑	1		↑	1
G	9/32	7.2	23	12963559		↑	1		↑	1		↑	1
H	5/16	8.0	24	12963658	27	12968657	2	29	12968954	2		↑	1
K	3/8	9.5	25	12963757		↑	2		↑	2		↑	1

MS-1261/V045 (For Heavy-weight) Option
MS-1261/V045 (厚物用) オプション

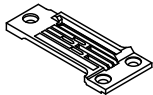
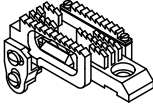
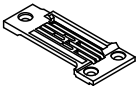
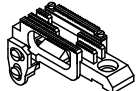

Description 品名			Gauge set ゲージセット		Throat plate 針板		Feed dog asm. 送り歯(組)	
Needle gauge size 針幅								
Code ゲージ 記号								
	inch	mm	Ref.No	Part No.	Ref.No	Part No.	Ref.No	Part No.
E	7/32	5.6	31	12972253	36	12972204	41	12974259
F	1/4	6.4	32	12972154	37	12972105	42	12974150
G	9/32	7.2	33	12972352	38	12972303	43	12974358
H	5/16	8.0	34	12972451	39	12972402	44	12974457
K	3/8	9.5	35	12972550	40	12972501	45	12974556

TABLE OF EXCHANGING GAUGE PARTS (1)

No.	Parts No.	Parts name	Remarks	Level	Cons	Qty
1	12953360	GAUGE SET 7/32 (FINGER GUARD)				1
2	12953261	GAUGE SET 1/4 (FINGER GUARD)				1
3	12953469	GAUGE SET 9/32 (FINGER GUARD)				1
4	12953568	GAUGE SET 5/16 (FINGER GUARD)				1
5	12953667	GAUGE SET 3/8 (FINGER GUARD)				1
6	12953303	THROAT PLATE XH 7/32				1
7	12953204	THROAT PLATE XH (1/4")				1
8	12953402	THROAT PLATE XH 9/32				1
9	12953501	THROAT PLATE XH 5/16				1
10	12953600	THROAT PLATE XH 3/8				1
11	12956355	NEEDLE CLAMP 7/32" ASM.				1
12	12956256	NEEDLE CLAMP (1/4") ASM.				1
13	12956454	NEEDLE CLAMP 9/32" ASM.				1
14	12956553	NEEDLE CLAMP 5/16" ASM.				1
15	12956652	NEEDLE CLAMP 3/8" ASM.				1
16	12960167	PRESSER FOOT 7/32" ASM.				1
17	12960068	PRESSER 1/4" (ASM) EXPORT				1
18	12960266	PRESSER FOOT 9/32" ASM.				1
19	12960365	PRESSER FOOT 5/16" ASM.				1
20	12960464	PRESSER FOOT 3/8" ASM.				1
21	12963450	FEED DOG XH ASM. 7/32				1
22	12963351	FEED DOG XH(1/4") ASM.				1
23	12963559	FEED DOG XH ASM. 9/32				1
24	12963658	FEED DOG XH ASM. 5/16				1
25	12963757	FEED DOG XH ASM. 3/8				1
26	12968558	LOOPER L (1) ASM.				1
27	12968657	LOOPER L (2) ASM.				1
28	12968855	LOOPER R (1) ASM.				1
29	12968954	LOOPER R (2) ASM.				1
30	12969150	LOOPER C (1) ASM.				1
31	12972253	GAUGE SET 7/32				1
32	12972154	GAUGE SET 1/4				1
33	12972352	GAUGE SET 9/32				1
34	12972451	GAUGE SET 5/16				1
35	12972550	GAUGE SET 3/8				1
36	12972204	THROAT PLATE H 7/32				1
37	12972105	THROAT PLATE H 1/4" ASM.				1
38	12972303	THROAT PLATE H 9/32				1
39	12972402	THROAT PLATE H 5/16				1
40	12972501	THROAT PLATE H 3/8				1
41	12974259	FEED DOG H 7/32" ASM.				1
42	12974150	FEED DOG H 1/4" ASM.				1
43	12974358	FEED DOG H 9/32" ASM.				1
44	12974457	FEED DOG H 5/16" ASM.				1
45	12974556	FEED DOG H 3/8" ASM.				1

TABLE OF EXCHANGING GAUGE PARTS (2)

MS-1261/V045(For Medium-weight)
MS-1261/V045(中厚物用)

Model 機種	Description 品名		Gauge set (with finger guard) ゲージセット (ガード付)		Throat plate 針板		Feed dog asm. 送り歯(組)		Thread guide 針糸系案内		
	Needle gauge size 針幅										
	Code ゲージ 記号										
	inch	mm	Ref.No	Part No.	Ref.No	Part No.	Ref.No	Part No.	Ref.No	Part No.	
MS-1261 /V045	E	7/32	5.6	1	12972956	6	12972907	11	12975058	16	B1130051000
	F	1/4	6.4	2	12972857	7	12972808	12	12974952		↑
	G	9/32	7.2	3	12973053	8	12973004	13	12975157		↑
	H	5/16	8.0	4	12973152	9	12973103	14	12975256		↑
	K	3/8	9.5	5	12973251	10	12973202	15	12975355		↑

V045-Option
V045-オプション

Spacer for presser 押さえ用スベ-サ				Screw for spacer スベ-サ取付けねじ			Spacer for feed dog 送り歯用スベ-サ			
Thickness 板厚(mm)	Ref.No	Part No. 品番	Description 品名	Ref.No	Part No. 品番	Qty 個数	Thickness 板厚(mm)	Ref.No	Part No. 品番	Description 品名
0.3	19	12973509	Adjusting plate B 押さえ調節板 B	24	SS5060310SP	2	0.3	26	12975702	Adjusting plate B 送り歯調節板 B
0.5	20	12973608	Adjusting plate C 押さえ調節板 C		↑	2	0.5	27	12964102	Adjusting plate A 送り歯調節板 A
0.8	21	12973707	Adjusting plate D 押さえ調節板 D	25	SS5060410SP	2	0.8	17	12975801	Adjusting plate C 送り歯調節板 C
1.0	22	12962106	Adjusting plate A 押さえ調節板 A		↑	2	1.0	18	12975900	Adjusting plate D 送り歯調節板 D
1.2	23	12973806	Adjusting plate E 押さえ調節板 E		↑	2				

The spacer and installing screws are not included in gauge set.

スベ-サおよびスベ-サ取付けねじは、ゲージセットには含まれません。

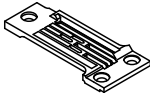
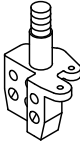

The spacer is not included in gauge set.
スベ-サは、ゲージセットには含まれません。

TABLE OF EXCHANGING GAUGE PARTS (2)

No.	Parts No.	Parts name	Remarks	Level	Cons	Qty
1	12972956	GAUGE SET 7/32				1
2	12972857	GAUGE SET 1/4				1
3	12973053	GAUGE SET 9/32				1
4	12973152	GAUGE SET 5/16				1
5	12973251	GAUGE SET 3/8				1
6	12972907	THROAT PLATE MH 7/32				1
7	12972808	THROAT PLATE MH (1/4")				1
8	12973004	THROAT PLATE MH 9/32				1
9	12973103	THROAT PLATE MH 5/16				1
10	12973202	THROT PLATE 3/8				1
11	12975058	FEED DOG MH ASM. 7/32				1
12	12974952	FEED DOG MH(1/4")ASM.				1
13	12975157	FEED DOG MH 9/32" ASM.				1
14	12975256	FEED DOG MH ASM. 5/16				1
15	12975355	FEED DOG MH 3/8" ASM.				1
16	B1130051000	FRAME THREAD GUIDE, MIDDLE				1
17	12975801	ADJUSTING PLATE C				1
18	12975900	ADJUSTING PLATE D				1
19	12973509	ADJUSTING PLATE, B				1
20	12973608	PRESSER ADJUSTING PLATE (C)				1
21	12973707	ADJUSTING PLATE, D				1
22	12962106	PRESSER ADJUSTING PLATE (A)				1
23	12973806	ADJUSTING PLATE E				1
24	SS5060310SP	SCREW 3/32-56 L=2.8				2
25	SS5060410SP	SCREW 3/32-56 L=3.5				2
26	12975702	ADJUSTING PLATE B				1
27	12964102	FEED DOG ADJUSTING PLATE (A)				1

TABLE OF EXCHANGING GAUGE PARTS (3)

MS-1261M/V045 (For Medium-Weight)
MS-1261M/V045 (中厚物用)

Description 品名			Gauge set (with finger guard) ゲージセット (指ガード付)		Throat plate 針板		Needle clamp asm. 針留(組)		Presser foot asm. (with finger guard) 押さえ(組) (指ガード付)	
Needle gauge size 針幅										
Code ゲージ 記号	inch	mm								
	inch	mm	Ref.No	Part No.	Ref.No	Part No.	Ref.No	Part No.	Ref.No	Part No.
E	7/32	5.6	1	1297 2 9 7 2	6	1297 2 9 0 7	11	12956355	16	129601 8 3
F	1/4	6.4	2	1297 2 8 7 3	7	1297 2 8 0 8	12	12956256	17	129600 8 4
G	9/32	7.2	3	1297 3 0 7 9	8	1297 3 0 0 4	13	12956454	18	129602 8 2
H	5/16	8.0	4	1297 3 1 7 8	9	1297 3 1 0 3	14	12956553	19	129603 8 1
K	3/8	9.5	5	1297 3 2 7 7	10	1297 3 2 0 2	15	12956652	20	129604 8 0

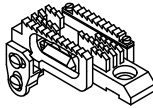



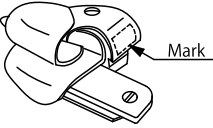
Description 品名			Feed dog asm. 送り歯(組)		Looper asm. (L) ルーバ(L)(組)			Looper asm. (R) ルーバ(R)(組)			Looper asm. (C) ルーバ(C)(組)		
Needle gauge size 針幅													
Code ゲージ 記号	inch	mm											
	inch	mm	Ref.No	Part No.	Ref.No	Part No.	Mark No	Ref.No	Part No.	Mark No	Ref.No	Part No.	Mark No
E	7/32	5.6	21	1297 5 0 5 8	26	12968558	1	28	12968855	1	30	12969150	1
F	1/4	6.4	22	1297 4 9 5 2		↑	1		↑	1		↑	1
G	9/32	7.2	23	1297 5 1 5 7		↑	1		↑	1		↑	1
H	5/16	8.0	24	1297 5 2 5 6	27	12968657	2	29	12968954	2		↑	1
K	3/8	9.5	25	1297 5 3 5 5		↑	2		↑	2		↑	1

TABLE OF EXCHANGING GAUGE PARTS (3)

No.	Parts No.	Parts name	Remarks	Level	Cons	Qty
1	12972972	GAUGE SET 7/32" (FINGER GUARD)				1
2	12972873	GAUGE SET 1/4" (FINGER GUARD)				1
3	12973079	GAUGE SET 9/32" (FINGER GUARD)				1
4	12973178	GAUGE SET 5/16" (FINGER GUARD)				1
5	12973277	GAUGE SET 3/8" (FINGER GUARD)				1
6	12972907	THROAT PLATE MH 7/32				1
7	12972808	THROAT PLATE MH (1/4")				1
8	12973004	THROAT PLATE MH 9/32				1
9	12973103	THROAT PLATE MH 5/16				1
10	12973202	THROT PLATE 3/8				1
11	12956355	NEEDLE CLAMP 7/32" ASM.				1
12	12956256	NEEDLE CLAMP (1/4") ASM.				1
13	12956454	NEEDLE CLAMP 9/32" ASM.				1
14	12956553	NEEDLE CLAMP 5/16" ASM.				1
15	12956652	NEEDLE CLAMP 3/8" ASM.				1
16	12960183	PRESSER FOOT ASM., 7/32" MH				1
17	12960084	PRESSER 1/4"MH ASM.,EXPORT				1
18	12960282	PRESSER FOOT MH ASM., 9/32				1
19	12960381	PRESSER FOOT ASM. 5/16, MH				1
20	12960480	PRESSER FOOT ASM. 3/8, MH				1
21	12975058	FEED DOG MH ASM. 7/32				1
22	12974952	FEED DOG MH(1/4")ASM.				1
23	12975157	FEED DOG MH 9/32" ASM.				1
24	12975256	FEED DOG MH ASM. 5/16				1
25	12975355	FEED DOG MH 3/8" ASM.				1
26	12968558	LOOPER L (1) ASM.				1
27	12968657	LOOPER L (2) ASM.				1
28	12968855	LOOPER R (1) ASM.				1
29	12968954	LOOPER R (2) ASM.				1
30	12969150	LOOPER C (1) ASM.				1

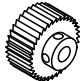

TABLE OF EXCHANGING GAUGE PARTS (4)

Description 品名			Folder asm. フォルダ [™] (組)					
Needle gauge size 針幅			M297		M298		M299	
Mark			MH		H		XH	
Code ゲージ記号			Ref.No	Part No.	Ref.No	Part No.	Ref.No	Part No.
			inch	mm				
E	7/32	5.6	2	MAM2970DDBA	7	MAM2980AABA	12	MAM2990AABA
F	1/4	6.4	3	MAM2970EEBA	8	MAM2980BBBA	13	MAM2990BBBA
G	9/32	7.2	4	MAM2970FFBA	9	MAM2980CCBA	14	MAM2990CCBA
H	5/16	8.0	5	MAM2970GGBA	10	MAM2980DDBA	15	MAM2990DDBA
K	3/8	9.5	6	MAM2970HHBA	11	MAM2980EEBA	1	MAM2990EEBA

The folder is not included in gauge set.
フォルダは、ゲージセットには含まれません。

Folder mark
フォルダ記号

- | | | | |
|------|---|---|---------------------------|
| M297 | — | Medium-weight (MS-1261M/V045
Standard equipment) | 中厚物用 (MS-1261M/V045 標準装備) |
| M298 | — | Heavy-weight | 厚物用 |
| M299 | — | Extra heavy-weight (MS-1261/V045
Standard equipment) | 極厚物用 (MS-1261/V045 標準装備) |

Description 品名			Roller asm. 先引きローラ (組)			
Needle gauge size 針幅			Steel roller スチールローラ		Urethane roller ウレタンローラ	
Code ゲージ記号	 		Ref.No	Part No.	Ref.No	Part No.
			inch	mm		
E	7/32	5.6	16	MAV045450A0	17	MAV045500B0
F	1/4	6.4		↑		↑
G	9/32	7.2		↑		↑
H	5/16	8.0		↑		↑
K	3/8	9.5		↑		↑

The cloth roller is not included in gauge set.
先引きローラは、ゲージセットには含まれません。

The kind of roller
先引きローラ種類

- | | | |
|---------------------------|---|---------------------------------------|
| Steel roller
スチールローラ | — | Heavy & extra heavy-weight
厚物・極厚物用 |
| Urethan roller
ウレタンローラ | — | Medium-weight
中厚物用 |

TABLE OF EXCHANGING GAUGE PARTS (4)

No.	Parts No.	Parts name	Remarks	Level	Cons	Qty
1	MAM2990EEBA	FOLDER 3/8 XH ASM.				1
2	MAM2970DDBA	FOLDER 7/32 MH				1
3	MAM2970EEBA	FOLDER 1/4MH				1
4	MAM2970FFBA	FOLDER 9/32 MH				1
5	MAM2970GGBA	HOLDER 5/16 MH				1
6	MAM2970HHBA	FOLDER 3/8 MH				1
7	MAM2980AABA	FOLDER 7/32 H ASM.				1
8	MAM2980BBBA	FOLDER 1/4 H ASM.				1
9	MAM2980CCBA	FOLDER 9/32 H ASM.				1
10	MAM2980DDBA	HOLDER 5/16 H ASM.				1
11	MAM2980EEBA	FOLDER 3/8 H ASM.				1
12	MAM2990AABA	FOLDER 7/32 XH ASM.				1
13	MAM2990BBBA	HOLDER 1/4XH ASM.				1
14	MAM2990CCBA	FOLDER 9/32 XH ASM.				1
15	MAM2990DDBA	FOLDER 5/16 XH ASM.				1
16	MAV045450A0	STEEL ROLLER				1
17	MAV045500B0	URETHANE ROLLER ASM.				1

HOW TO MAKE USE OF THIS PARTS LIST

1.Explanation of codes

1)"*"mark.....means this part is changed from the previous parts book.

As to the details of the change, refer to the "List for information of change".

2)"#01".....refer to "Note" explanation at bottom of page.

2.Codes on the "Qty" column

- Each numeral indicates the number of parts required.
- "0.1" and "2.5" indicate the length (in meters) of the respective parts.

3.Parentheses mean that the corresponding part is a subpart that constructs an assembly part.

4.Dotted lines on the Figures indicate assembly parts.

1."注記"欄の記号説明

1) "*"印.....前回のパーツブックに比較して今回変更された部品を意味します。

変更内容は、"変更情報リスト"を参照してください。

2) "#01".....ページ下の"注記"の説明を参照してください。

2.数量欄の数字は、個数を表し、0.1、2.5等の数値は、長さ（単位メートル）を表します。

3.数量欄の（ ）は、組部品を構成している子部品であることを意味します。

4.イラストページの-----枠は、組構成であることを意味します。

NUMERICAL INDEX OF PARTS

PART NO	PAGE	REF NO.	PART NO	PAGE	REF NO.	PART NO	PAGE	REF NO.
10704203	2	28	12944906	28	17	12960084	14	6
11956703	6	8	12950507	2	32	12960084	18	12
11957305	6	5	12950606	2	12	12960084	46	17
12921003	2	3	12950705	2	1	12960167	42	16
12921409	2	20·26	12950804	2	4	12960183	46	16
12921607	2	25·61	12951000	2	16	12960266	42	18
12921904	8	62	12951505	8	61	12960282	46	18
12922001	8	63	12951950	4	75	12960365	42	19
12922704	2	20·26	12952008	4	76	12960381	46	19
12922803	8	51	12952255	2	30	12960464	42	20
12924502	10	19	12952552	2	29	12960480	46	20
12924718	10	23	12953204	12	60	12960803	18	13
12924718	16	48	12953204	42	7	12962007	18	15
12924767	10	21	12953261	42	2	12962106	18	5
12924767	16	46	12953303	42	6	12962106	44	22
12924809	14	34	12953360	42	1	12962205	18	18
12924916	10	27	12953402	42	8	12962304	18	21
12925004	10	29	12953469	42	3	12962403	18	17
12931507	22	61	12953501	42	9	12962601	22	67
12931606	22	60	12953568	42	4	12962809	20	40
12931705	22	64	12953600	42	10	12963005	22	59
12931903	22	52	12953667	42	5	12963062	22	53
12932000	4	54	12955209	10	31	12963302	24	17
12932109	4	55	12955308	10	33	12963351	20	4
12932158	4	53	12955803	2	33	12963351	24	16
12933719	14	37	12956256	12	62	12963351	42	22
12935516	6	34	12956256	42	12	12963450	42	21
12935607	6	41	12956256	46	12	12963559	42	23
12935805	6	47	12956355	42	11	12963658	42	24
12935904	8	68	12956355	46	11	12963757	42	25
12936217	6	44	12956454	42	13	12964102	24	34
12936506	8	49	12956454	46	13	12964102	44	27
12936803	8	72	12956553	42	14	12964201	24	19
12936902	6	33	12956553	46	14	12964300	24	36
12938304	6	6	12956652	42	15	12964409	24	37
12939500	8	54	12956652	46	15	12964508	24	39·40
12939609	8	55	12958500	14	18	12964607	24	41
12939708	8	56	12958559	14	17	12964706	24	42·43
12939807	8	57	12958609	14	16	12964805	24	38
12939906	8	58	12959300	14	30	12965513	16	50
12940102	4	64	12959409	14	31	12965703	2	40
12941100	24	13	12960001	18	14	12966008	6	40
12942009	24	3	12960068	14	35	12966107	6	39
12943106	10	15	12960068	18	1	12966206	6	38
12943700	4	73	12960068	42	17	12966305	6	35

NUMERICAL INDEX OF PARTS

PART NO	PAGE	REF NO.	PART NO	PAGE	REF NO.	PART NO	PAGE	REF NO.
12966503	14	44	12972451	42	34	12975355	46	25
12966552	14	43	12972501	42	40	12975504	24	35
12966602	6	9	12972550	42	35	12975702	44	26
12966701	6	13	12972808	12	58	12975801	44	17
12966800	2	15	12972808	44	7	12975900	44	18
12966909	2	43	12972808	46	7	13515606	40	36
12967006	2	44	12972857	44	2	22901805	4	85
12967105	2	45	12972873	46	2	22902506	2	2
12967204	6	32	12972907	44	6	22906408	14	12
12967303	6	29	12972907	46	6	22906457	14	11
12967402	6	26	12972956	44	1	22920607	4	62
12967501	2	17	12972972	46	1	22932453	28	19
12967600	6	18	12973004	44	8	22934202	28	22
12967758	8	53	12973004	46	8	22934251	28	21
12968004	20	10	12973053	44	3	22934301	28	23
12968103	14	1	12973079	46	3	22934400	28	24
12968202	14	3	12973103	44	9	22934509	28	25
12968509	24	2	12973103	46	9	22934608	28	26
12968558	20	1	12973152	44	4	26226407	40	29
12968558	24	1	12973178	46	4	40011122	36	14
12968558	42	26	12973202	44	10	40026874	10	42
12968558	46	26	12973202	46	10	40026875	10	36
12968657	42	27	12973251	44	5	40038331	8	67
12968657	46	27	12973277	46	5	40040608	20	25
12968806	24	7	12973509	44	19	40060166	4	81
12968855	20	2	12973608	44	20	40062288	38	27~29
12968855	24	6	12973707	44	21	40065076	38	27~29
12968855	42	28	12973806	44	23	40076305	34	28
12968855	46	28	12974150	42	42	40080579	24	39-40
12968954	42	29	12974259	42	41	40080580	24	42-43
12968954	46	29	12974358	42	43	40085671	6	3
12969101	24	12	12974457	42	44	40085675	6	1
12969150	20	3	12974556	42	45	40085676	6	12
12969150	24	11	12974903	24	33	40085784	30	8
12969150	42	30	12974952	22	48	40085785	30	11
12969150	46	30	12974952	24	32	40085788	30	15
12969309	24	8	12974952	44	12	40085789	30	14
12970406	4	80	12974952	46	22	40085790	30	16
12972105	42	37	12975058	44	11	40085791	30	17
12972154	42	32	12975058	46	21	40085792	30	13
12972204	42	36	12975157	44	13	40085793	30	12
12972253	42	31	12975157	46	23	40085794	30	4
12972303	42	38	12975256	44	14	40085795	30	3
12972352	42	33	12975256	46	24	40085796	30	10
12972402	42	39	12975355	44	15	40096325	30	9

NUMERICAL INDEX OF PARTS

PART NO	PAGE	REF NO.	PART NO	PAGE	REF NO.	PART NO	PAGE	REF NO.
40096326	30	7	B1408038000	10	4	B2315019000	28	5
40096327	30	5	B14090190B0	12	50	B2317019000	28	7
40106574	30	6	B1411019000	10	13	B231919100A	28	4
40106575	30	2	B1412038000	10	12	B2321019000	28	9
40106577	30	18	B1418019000	12	51	B2322019000	28	1
40106578	30	19	B1502019000	14	9	B2324261000	14	25
40111348	30	1	B15040190A0	14	14	B2326019000	14	24
40117111	6	25	B1506019000	14	19	B2327019000	14	20
40117113	6	15	B1534816000	8	64	B2328019000	14	27
40118508	2	42	B1601026000	20	38	B2329019000	14	21
40138860	36	2	B1602019000	22	66	B2330019000	14	22
40138861	38	21	B1606191000	22	65	B2402019000	6	28
40138862	32	15	B1610019000	20	39	B2421019000	6	19
40138863	32	16	B1621261000A	22	63	B2502019000	20	8
40138864	36	1	B1622541000	4	56	B2503019000	20	28
A116100100B	14	23	B1623191000	22	58	B25050190A0	20	14
B110419100A	4	67	B1624191000	22	54	B3112704000	6	7
B110419100B	4	68	B1625191000	22	57	B3126012000	6	4
B110419100C	4	69	B1626191000	22	56	B3421012000	28	18
B11041910A0	4	66	B1635191000	20	34	B3502019000	10	38
B1124804000	2	24	B1802019000	14	39	B3503019000	10	39
B1127026000	14	7	B1803019000	14	40	B3504019000	10	37
B1130051000	2	38	B1805019000	4	48	B3510019000	10	10
B1130051000	44	16	B1806019000	4	59	B3541012000	10	11
B1134850000A	2	35	B18080190A0	14	41	B3701019000	28	3
B1135850000	2	36	B1901026000	12	48	B8101191000	28	13
B1140019000	4	79	B20012610A0	20	35	B81011910A0	28	10
B1156019000	4	25·61	B2002026000A	20	27	B8102191000	28	11
B1157019000	2	31	B20060190A0	20	32	B8511180000	28	14
B1161026000	2	10	B2056781000	40	16	CM300200001	4	83
B1161227000	10	34	B2101261000A	22	47	CM300200001	32	19
B11620260A0	2	8	B21020260A0A	20	20	CM301200002	4	82
B1202512000	10	9	B21032610A0	22	49	CM500300001	4	71
B1203512000	10	22	B2105019000	22	45·46	CQ252000000	10	44
B1203512000	16	47	B210501900A	22	45·46	CQ300000000	10	47
B1207026000	10	6	B2106026000	20	6	CS1201010SH	34	3
B12070260A0	10	1	B2107019000	20	23	D2587L8WB00	40	7
B1208019000	10	5	B2108026000	20	43	MAM2970DDBA	48	2
B12090190A0	10	2	B2115191000	20	7	MAM2970EEBA	14	29
B1219019000	2	21	B2116191000	20	17~19	MAM2970EEBA	48	3
B1222019000	10	18	B211619100A	20	17~19	MAM2970FFBA	48	4
B1236125BA0	10	3	B211619100B	20	17~19	MAM2970GGBA	48	5
B1401019000	12	54	B21230260A0	20	11	MAM2970HHBA	48	6
B1402026B0G	10	45	B2208019000	8	73	MAM2980AABA	48	7
B1404026B0G	12	53	B2310019000	6	2	MAM2980BBBA	48	8

NUMERICAL INDEX OF PARTS

PART NO	PAGE	REF NO.	PART NO	PAGE	REF NO.	PART NO	PAGE	REF NO.
MAM2980CCBA	48	9	MAV0454500D	38	26·31	RC0650811KP	38	16
MAM2980DDBA	48	10	MAV045450A0	48	16	RC1200001KP	34	5
MAM2980EEBA	48	11	MAV04546000	38	5	RC1851217KP	36	3
MAM2990AABA	48	12	MAV04547000	38	11	RE0400000K0	4	58
MAM2990BBBA	14	28	MAV045470A0	38	10	RE1200000K0	16	51
MAM2990BBBA	48	13	MAV045500A0	38	27~29	RO040100210	4	57
MAM2990CCBA	48	14	MAV045500B0	48	17	RO061180100	20	41
MAM2990DDBA	48	15	MAV04555000	40	1	RO068190100	4	52
MAM2990EEBA	48	1	MAV04556000	40	2	RO069180100	10	40
MAV04501000	32	1	MAV04557000	40	3	RO095200100	20	30
MAV04502000	32	2	MAV04558000	40	5	RO098240100	10	35
MAV04503000	32	7	MAV04559000	40	10	SB106000200	34	27
MAV04504000	32	9	MAV04560000	40	13	SB107000100	38	12
MAV04507000	32	18	MAV04561000	40	18	SB108000600	34	16
MAV04515000	34	1	MAV04562000	40	23	SB112000500	34	4
MAV04516000	34	8	MAV04563000	40	35	SB135000300	34	10
MAV045160B0	34	7	MAV04564000	40	26	SB212000100	34	2
MAV04517000	34	9	MAV04565000	40	28	SB307000400	38	19
MAV04518000	34	15	MAV04566000	40	30	SB307000500	38	3
MAV045180A0	34	14	MAV04567000	40	31	SB310000300	36	7
MAV04519000	34	19	MAV04568000	40	33	SB310000700	36	8
MAV04520000	34	23	MAV04569000	40	34	SD0380551SL	2	37
MAV04521000	34	26	MAV04616000	40	19	SD0450211SP	28	6
MAV045210A0	34	25	MC380001200	10	20·26	SD0550451SP	40	8
MAV04522000	34	12	MC380001300	12	25·61	SD0600271SP	40	24
MAV04524000	36	4	MUY128N1900	10	20·26	SD0600361SP	40	12
MAV04526000A	36	6	MUY128N2100	10	25·61	SD0600402TP	40	20
MAV04527000	36	12	NM6030003SC	32	14	SD0600596SH	36	10
MAV04529000	36	15	NM6030003SC	40	38	SD0640321TP	40	14
MAV04530000	36	16	NM6040003SC	36	11	SD0640325SP	40	11
MAV04531000	36	17	NM6050001SE	30	23	SD0640751SP	40	15
MAV04532000	36	19	NM6060003SC	34	22	SD0790431SP	28	2
MAV04533000	36	9	NM6060003SC	38	30	SD0801606SH	34	21
MAV04534000	36	5	NM6080001SC	40	32	SK3412001SE	30	22
MAV04535000	38	2	NM6080003SC	34	17	SK3452500SC	28	20
MAV045350A0	38	1	NS6110310SP	6	11	SM4051001SE	30	21
MAV04536000	38	7	NS6110350SP	8	59	SM4051405SE	30	20
MAV045360A0	38	6	NS6110420SP	40	25	SM5030355SE	32	8
MAV04537000	38	14	NS6120310SP	14	26	SM5040655SN	32	17
MAV045380A0	38	18	NS6150310SP	20	13	SM6031202TP	32	13
MAV045380B0	38	17	NS6620310SP	40	21	SM6031402TP	40	37
MAV04541000	38	20	PS0250081K0	22	55	SM6040802TP	38	22
MAV04543000	38	23	PS0300102K0	32	12	SM6040802TP	40	6
MAV04544000	38	24	PS0300242K0	32	11	SM6041002TP	40	9
MAV04545000	38	26·31	PS0500202KP	8	76	SM6061002TP	40	27

NUMERICAL INDEX OF PARTS

PART NO	PAGE	REF NO.	PART NO	PAGE	REF NO.	PART NO	PAGE	REF NO.
SM6061202TP	14	32	SS6110610TP	8	52	SS7621040SP	20	37
SM6061602TP	34	24	SS6110610TP	14	4	SS7740740SP	4	51
SM6062002TP	32	3	SS6111610SP	14	36	SS7740740SP	10	17
SM6062002TP	38	33	SS6122030SP	2	18	SS8080310TP	12	63
SM8040302TP	36	20	SS6122030SP	20	16	SS8080610SP	12	64
SM8040402TP	38	32	SS6150810SP	18	20	SS8110310SP	14	45
SM8040602TP	36	18	SS6151220SP	10	8	SS8110410TP	20	62
SM8040602TP	38	25	SS7060510SP	6	17	SS8110410TP	22	62
SM8050502TP	38	15	SS7080510TP	20	22	SS8110422TP	20	42
SM8050602TP	36	13	SS7080520SP	24	14	SS8110510SP	22	44
SM8060602TP	34	11	SS7090510SP	6	20	SS8111160SP	6	10
SM8060602TP	40	4	SS7090510SP	24	45	SS8150310SP	10	46
SM8082502TP	34	18	SS7090510SP	26	45	SS8150310SP	14	10
SM9061203SE	28	27	SS7090520SP	6	27	SS8150310SP	20	29
SM9061850SC	32	5	SS7090530SP	6	70	SS8150410SP	20	31
SS1090510SP	10	30	SS7090530SP	8	70	SS8150710SP	10	24
SS2060510SP	6	30	SS7090530SP	10	16	SS8150710SP	16	49
SS2110920TP	12	59	SS7090710SP	2	47	SS8150710SP	20	24
SS3060410SP	2	27	SS7090710SP	8	71	SS8150822TP	14	5
SS3090610SP	2	39	SS7090710SP	14	8	SS8151150SP	20	9
SS4090815SP	2	23	SS7090850SP	6	43	SS8152030SP	10	32
SS4090815SP	8	75	SS7090910SP	2	34	SS8660410SP	10	7
SS4091010SP	2	9	SS7090910SP	12	52	SS8660522TP	10	28
SS4110815SP	2	13	SS7090910TP	12	49	SS8660612TP	20	50
SS4120915SP	2	6	SS7090910TP	24	15	SS8660612TP	22	50
SS4622340SP	6	24	SS7090920SP	20	21	SS9151210TP	28	12
SS5060310SP	18	16	SS7091110TP	24	47	SS9182010TE	28	16
SS5060310SP	44	24	SS7091110TP	26	47	SS9284043CP	4	74
SS5060410SP	6	31	SS7091410SP	14	2	TA1250406R0	2	7
SS5060410SP	18	6	SS7110710SP	4	65	TA1600406R0	4	84
SS5060410SP	44	25	SS7110710SP	8	60	WP0370316SD	2	19
SS5090420SP	6	45	SS7110710SP	28	8	WP0371016SD	6	69
SS5090610SP	4	50	SS7110830SP	14	38	WP0371016SD	8	69
SS5090710SP	2	11	SS7110830SP	20	26	WP0450000SD	24	44
SS5091020SP	4	86	SS7110840SP	6	66	WP0450000SD	26	44
SS5110810SP	4	77	SS7110840SP	8	66	WP0450801SD	2	41
SS5660440SP	10	41	SS7110910TP	14	33	WP0480856SP	40	22
SS5820540SP	4	78	SS7111110TP	14	15	WP0531001SC	30	24
SS6060210SP	8	74	SS7111110TP	20	51	WP0641600SC	32	6
SS6060410TP	18	19	SS7111110TP	22	51	WP0641600SC	34	13
SS6090540SP	2	46	SS7111120SP	4	60	WP0651056SH	40	17
SS6090670TP	14	13	SS7111410SP	8	48	WP1221016SP	34	6
SS6092120SP	10	43	SS7120910SP	10	14	WP1612616SE	30	25
SS6110480SP	4	70	SS7151210SP	2	72	WS0510002KN	30	26
SS6110610TP	2	5	SS7151210SP	4	72			