

MODEL : PK71  
List No : 0934-01

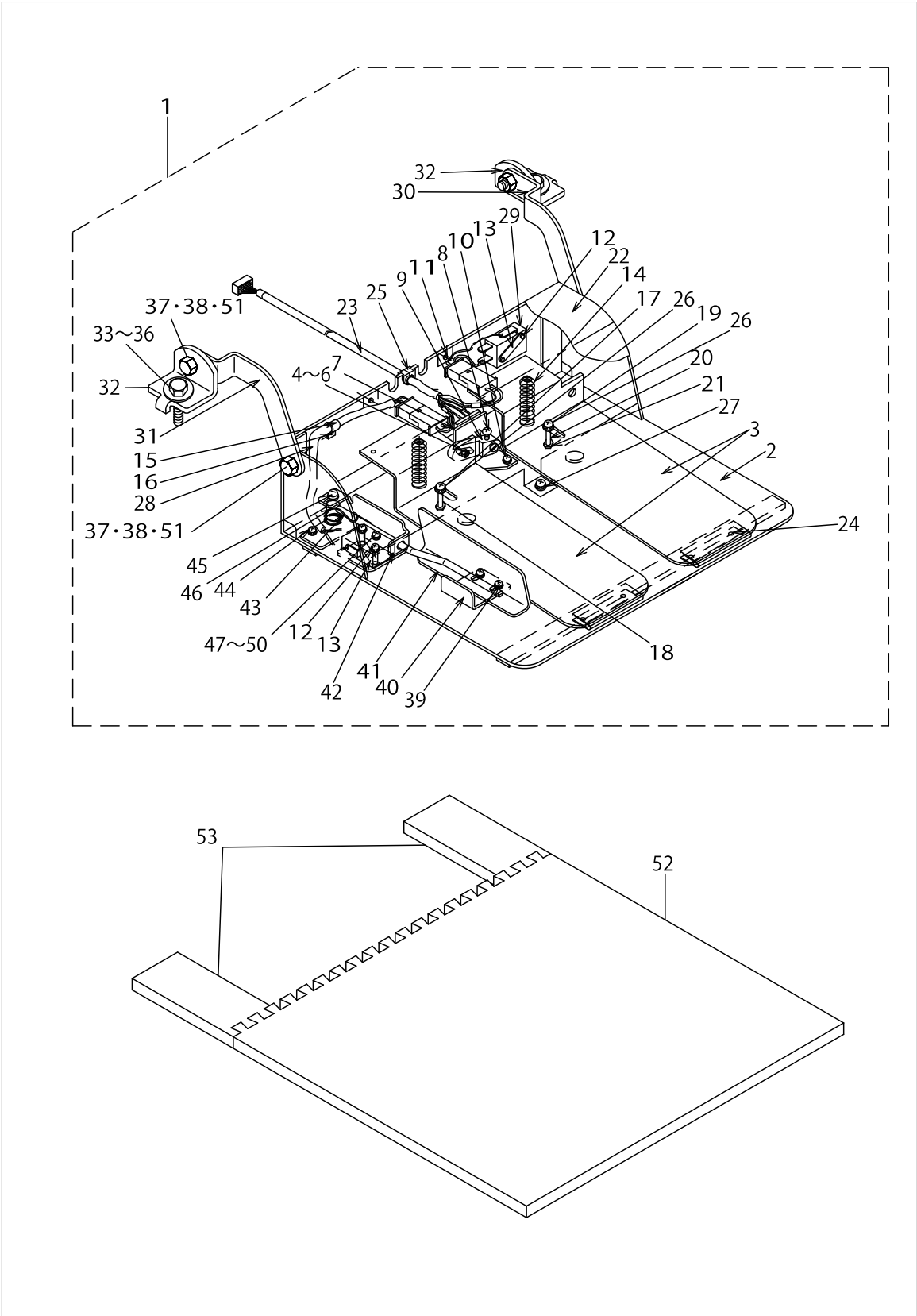
# PARTS LIST

Published:09/10/2017

## CONTENTS

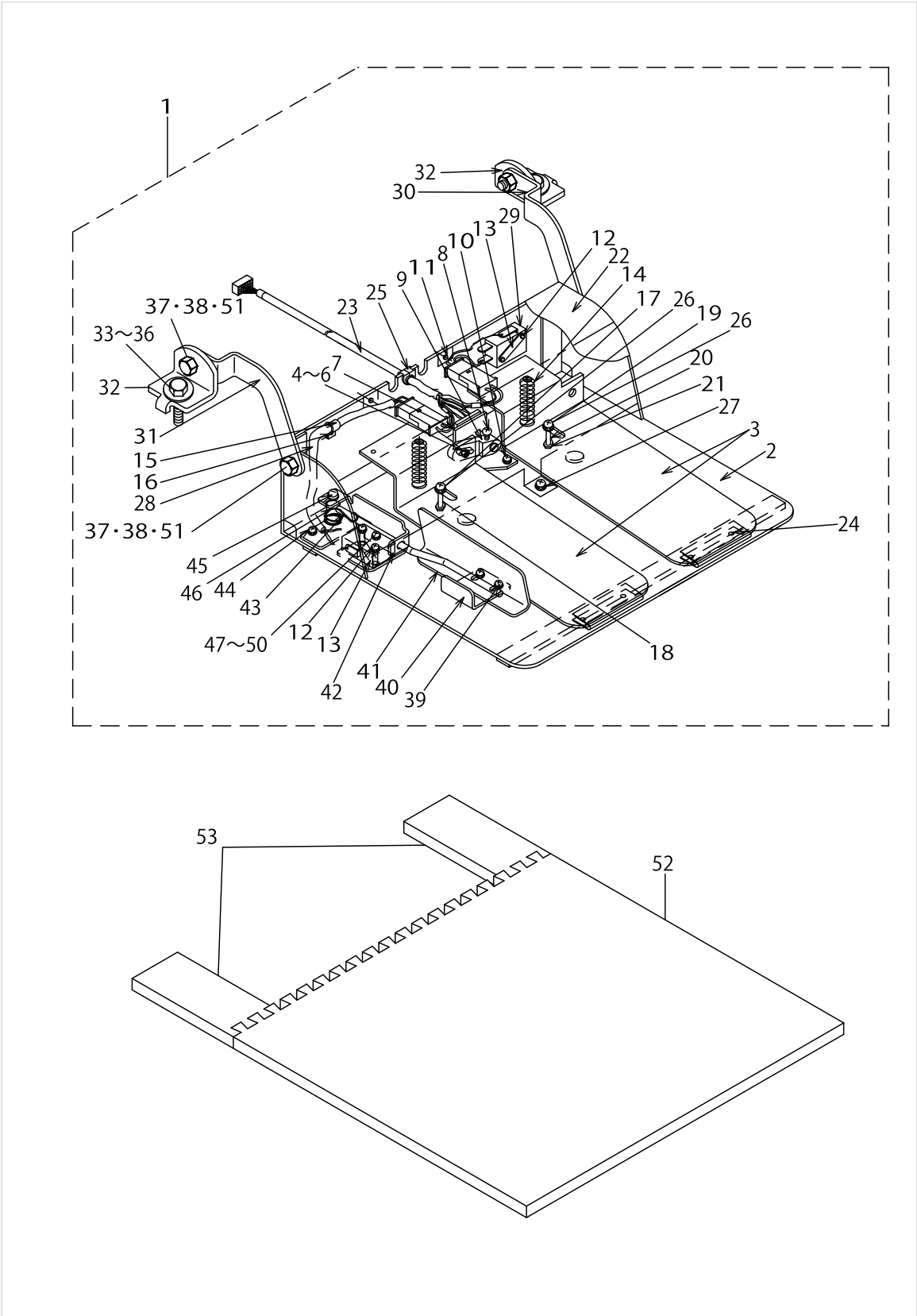
---

PK71 .....	1
HOW TO MAKE USE OF THIS PARTS LIST .....	5



PK71

No.	Parts No.	Parts name	Remarks	Level	Cons	Qty
1	GPK710010A0	2-PEDAL ASM., 71				1
2	GPK710020A0	PEDAL BASE ASM., 71		*		1
3	GPK260030AA	PEDAL		*		2
4	GPK12005000	PEDAL LINK PIN		*		1
5	NM6040001SC	NUT M4		*		1
6	NM6040003SC	NUT M4		*		1
7	GPK12006000	VOLUME INSTALLING PLATE		*		1
8	SM4030801SN	SCREW M3 L=8		*		1
9	M2004110000	VOLUME LINK		*		1
10	SL4030681SC	SCREW M3 L=6		*		2
11	SL4040691SC	SCREW M4 L=6		*		3
12	SL4031691SC	SCREW M3 L=16		*		4
13	11102308	MICRO SWITCH PLATE		*		2
14	GPK14013000	PEDAL SPRING		*		2
15	HX001230000	CABLE CLIP		*		1
16	SL4040881SC	SCREW M4 L=8		*		1
17	SL4043091SC	SCREW M4 L=30		*		1
18	GPK26027000	VIRIABLE PEDAL GUIDE COLLAR		*		1
19	SL4042591SC	SCREW M4 L=25		*		1
20	GPK26026000	SWITCH PEDAL GUIDE COLLAR		*		1
21	NM6040003SC	NUT M4		*		2
22	GPK260060AA	SWITCH COVER 26W		*		1
23	GPK700050A0	SENSOR VOLUME ASM.		*		1
24	SM1030501SC	SCREW M3 L=5		*		4
25	GPK26023000	BUSH A		*		1
26	GHP03537000	WASHER		*		2
27	WP0430801SC	WASHER 4.3X9X0.8		*		1
28	GPK710040A0	LEFT SWITCH ASM., 71		*		1
29	GPK700030A0	SWITCH ASM., RIGHT		*		1
30	GPK1800600AA	PEDAL BASE JOINT, RIGHT		*		1
31	GPK1800700AA	PEDAL BASE JOINT, LEFT		*		1
32	11159001	PEDAL SHAFT BRACKET		*		2
33	SM9082023SE	SCREW M8 L=20		*		2
34	WP0871602SE	WASHER 8.7X18X1.6		*		4
35	WS0861410KR	SPRING WASHER 8.6X15X1.4		*		2
36	NM6080721SE	NUT M8		*		2
37	SM9081620SE	SCREW M8 L=16		*		4
38	NM6080002SE	NUT M8		*		4
39	SL4040891SC	SCREW M4 L=8		*		2
40	GPK2600800A	THREAD CUTTER SWITCH STOPPER,W		*		1
41	GPK2600700A	THREAD CUTTER SWITCH LEVER, W		*		1
42	GPK26009000	SWITCH BASE		*		1
43	GPK26011000	SWITCH SPRING		*		1
44	SL4040891SC	SCREW M4 L=8		*		1
45	SS4111215SP	SCREW 11/64-40 L=12		*		1
46	GPK26010000	SWITCH SHAFT		*		1
47	SM4041201SC	SCREW M4 L=12		*		1



PK71

No.	Parts No.	Parts name	Remarks	Level	Cons	Qty
48	GPK26028000	SWITCH BASE COLLAR		*		1
49	WP0430801SC	WASHER 4.3X9X0.8		*		1
50	NM6040003SC	NUT M4		*		1
51	GPK26022000	JOINT FITTING COLLAR		*		4
52	GPK26100000	MAT A				1
53	GPK26101000	MAT B				2

## HOW TO MAKE USE OF THIS PARTS LIST

1.As to "#01" and "#02" refer to the "Note" given at the bottom of the respective pages.

2.Codes on the "Qty" column

- Each numeral indicates the number of parts required.
- "0.1" and "2.5" indicate the length (in meters) of the respective parts.

3.Parentheses mean that the corresponding part is a subpart that constructs an assembly part.

4.Dotted lines on the Figures indicate assembly parts.

1. リストページの# 0 1、# 0 2の印は、ページ下の"注記"の説明を参照下さい。
2. 数量欄の数字は、個数を表し、0. 1、2. 5等の数値は、長さ（単位メートル）を表します。
3. 数量欄の（ ）は、組部品を構成している子部品であることを意味します。
4. イラストページの-----枠は、組構成であることを意味します。

# NUMERICAL INDEX OF PARTS

PART NO	PAGE	REF NO.	PART NO	PAGE	REF NO.
11102308	2	13	SM9082023SE	2	33~36
11159001	2	32	SS4111215SP	2	45
GHP03537000	2	26	WP0430801SC	2	47~50
GPK12005000	2	4~6	WP0430801SC	4	47~50
GPK12006000	2	7	WP0871602SE	2	33~36
GPK14013000	2	14	WS0861410KR	2	33~36
GPK1800600AA	2	30			
GPK1800700AA	2	31			
GPK260030AA	2	3			
GPK260060AA	2	22			
GPK2600700A	2	41			
GPK2600800A	2	40			
GPK26009000	2	42			
GPK26010000	2	46			
GPK26011000	2	43			
GPK26022000	4	37·38·51			
GPK26023000	2	25			
GPK26026000	2	20			
GPK26027000	2	18			
GPK26028000	4	47~50			
GPK26100000	4	52			
GPK26101000	4	53			
GPK700030A0	2	29			
GPK700050A0	2	23			
GPK710010A0	2	1			
GPK710020A0	2	2			
GPK710040A0	2	28			
HX001230000	2	15			
M2004110000	2	9			
NM6040001SC	2	4~6			
NM6040003SC	2	47~50			
NM6040003SC	4	47~50			
NM6080002SE	2	37·38·51			
NM6080721SE	2	33~36			
SL4030681SC	2	10			
SL4031691SC	2	12			
SL4040691SC	2	11			
SL4040881SC	2	16			
SL4040891SC	2	44			
SL4042591SC	2	19			
SL4043091SC	2	17			
SM1030501SC	2	24			
SM4030801SN	2	8			
SM4041201SC	2	47~50			
SM9081620SE	2	37·38·51			