

MODEL : T040
List No : 0933-04

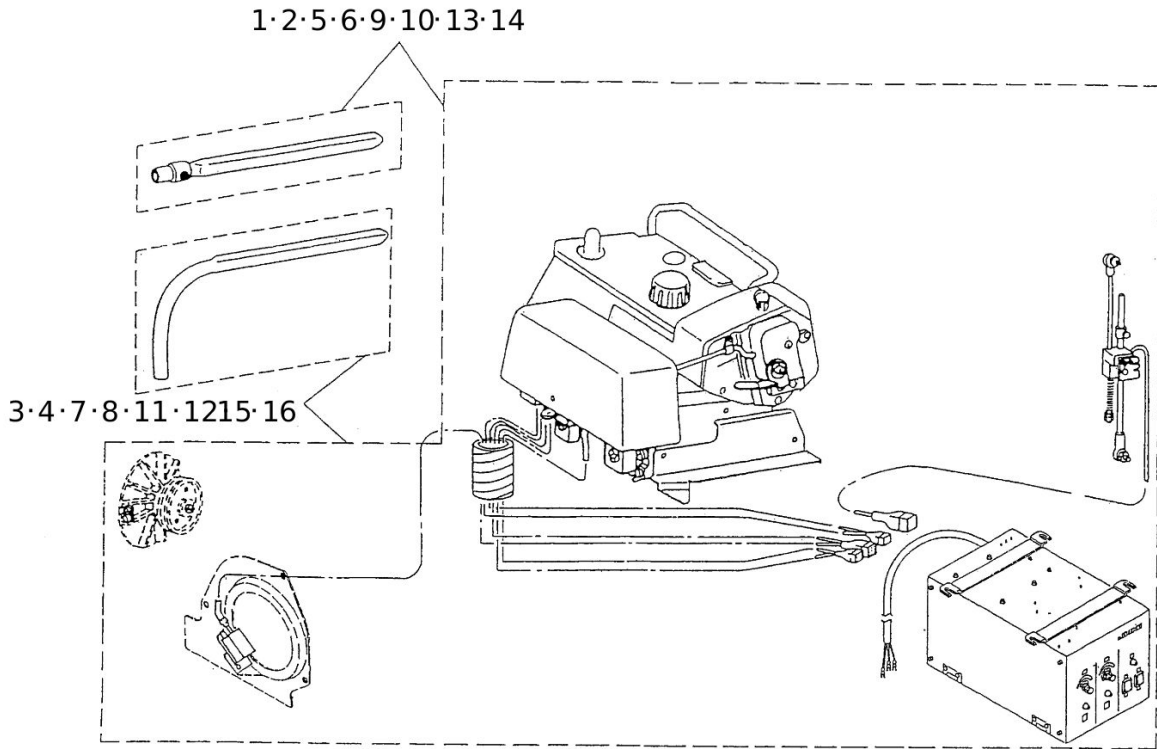
PARTS LIST

Published:09/10/2017

CONTENTS

APPLICABLE MODELS & USAGE	1
KNIFE & MAGNET COMPONENTS.....	3
SENSOR & TENSION RELEASE MAGNET COMPONENTS	7
CONTROL BOX COMPONENTS	11
PRINTED CIRCUIT BOARD COMPONENTS	13
WIRING DIAGRAM.....	15
HOW TO MAKE USE OF THIS PARTS LIST	17

APPLICABLE MODELS & USAGE



Applicable models 適用機種	Usage 用途
All models of M0-6Δ00S, M0-6900R, M0-6900G, M0-6900J series (Except M0-6Δ12, M0-6912R)	Automatic chain-off thread cutter
M0-6Δ00S, M0-6900R, M0-6900G, M0-6900Jシリーズ全機種 (M0-6Δ12, M0-6912Rは除く)	自動空環系切り用

TABLE OF UNIT COMBINATIONS
ユニット組合わせ表

Ref. No.	Part No. 品番	100V	220V	Table Type テーブル仕様	Applicable models 適用機種
		115V	240V		
1	400-43894	○		Semi-sunken 卓上式	M0-6Δ00S
2	400-43897		○	Fully-sunken	
3	400-43898	○		Fully-sunken	
4	400-43899		○	全沈式	
5	400-43900	○		Semi-sunken 卓上式	M0-6900R
6	400-43901		○	Fully-sunken	
7	400-43902	○		Fully-sunken	
8	400-43903		○	全沈式	
9	400-43904	○		Semi-sunken 卓上式	M0-6900G
10	400-43905		○	Fully-sunken	
11	400-43906	○		Fully-sunken	
12	400-43907		○	全沈式	
13	400-43908	○		Semi-sunken 卓上式	M0-6900J
14	400-43909		○	Fully-sunken	
15	400-43910	○		Fully-sunken	
16	400-43911		○	全沈式	

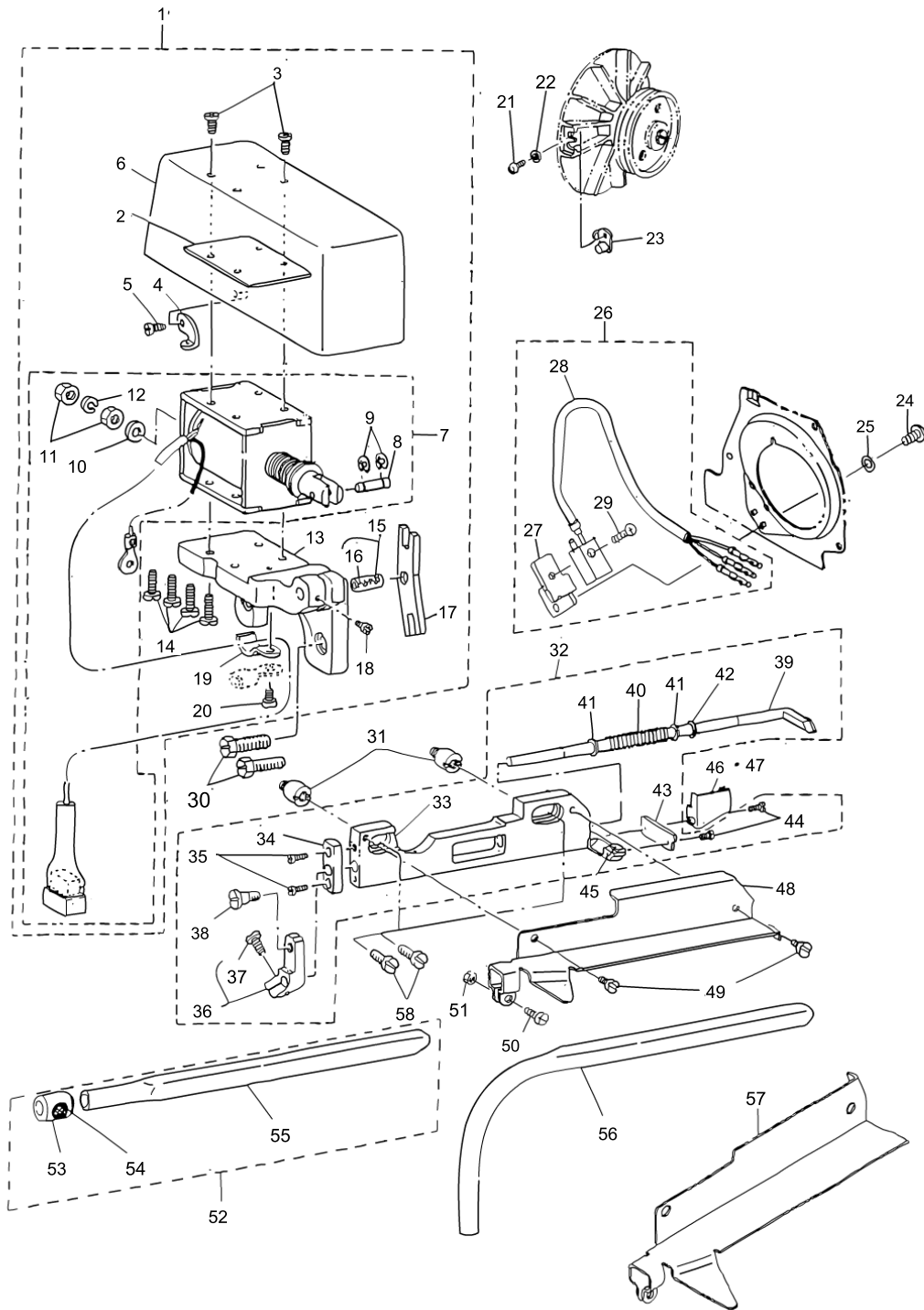
APPLICABLE MODELS & USAGE

No.	Parts No.	Parts name	Remarks	Level	Cons	Qty
1	40043894	T040 A 1 S				1
2	40043897	T040 B 1 S				1
3	40043898	T040 A 0 S				1
4	40043899	T040 B 0 S				1
5	40043900	T040 A 1 R				1
6	40043901	T040 B 1 R				1
7	40043902	T040 A 0 R				1
8	40043903	T040 B 0 R				1
9	40043904	T040 A 1 G				1
10	40043905	T040 B 1 G				1
11	40043906	T040 A 0 G				1
12	40043907	T040 B 0 G				1
13	40043908	T040 A 1 J				1
14	40043909	T040 B 1 J				1
15	40043910	T040 A 0 J				1
16	40043911	T040 B 0 J				1

KNIFE & MAGNET COMPONENTS

2. KNIFE & MAGNET COMPONENTS

メス・マグネット関係



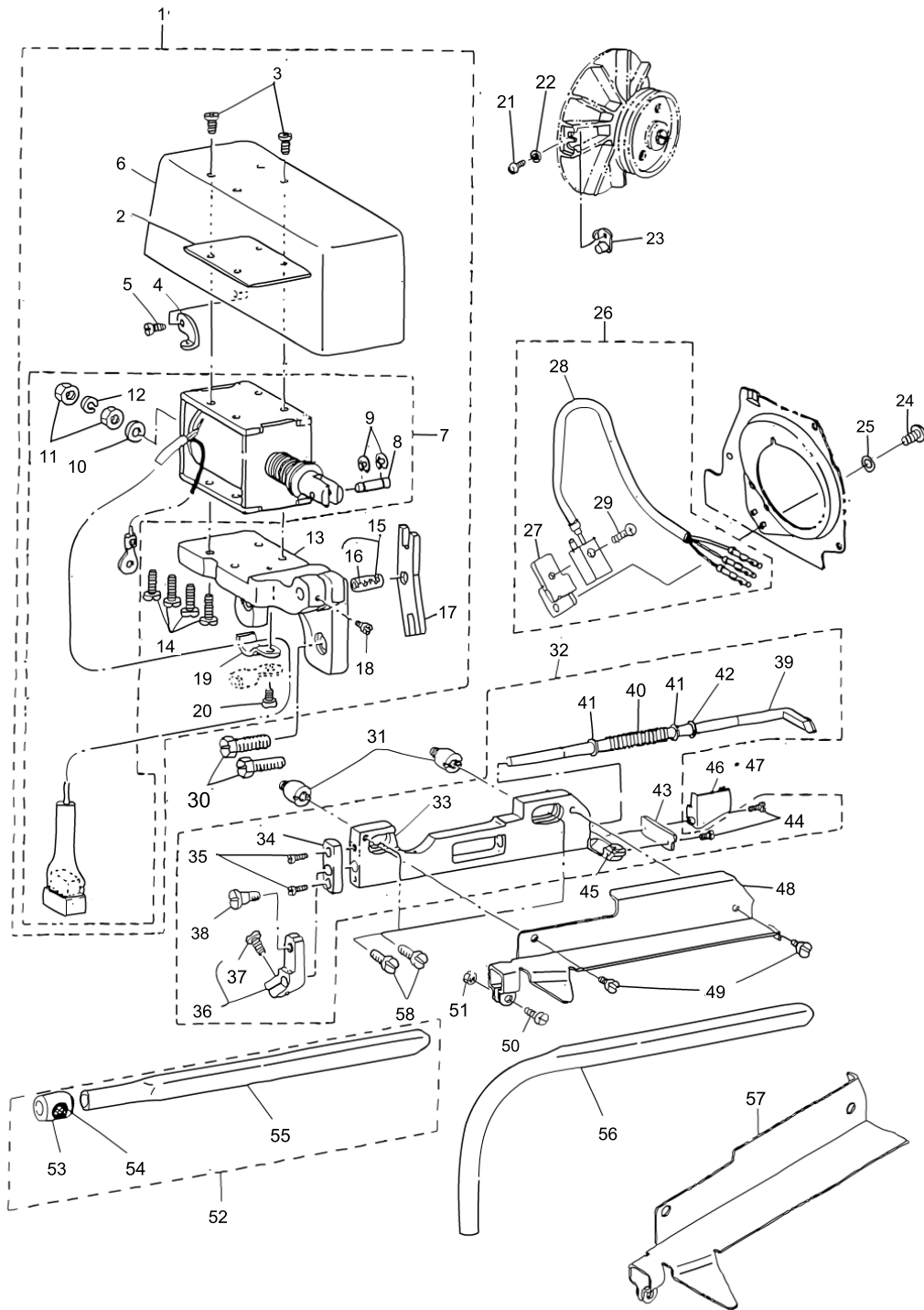
KNIFE & MAGNET COMPONENTS

No.	Parts No.	Parts name	Remarks	Level	Cons	Qty
1	40042743	THREAD CUTTER MAGNET ASM.				1
2	MAT81132T00	MAGNET RUBBER COVER		*		1
3	SM4040601SB	SCREW M4 L=6		*		4
4	B2526704000	LOWER LOOPER THREAD GUIDE		*		1
5	SS6090630SP	SCREW 9/64-40 L=6		*		1
6	MAT03219000	MAGNET COVER		*		1
7	40042572	THREAD CUTTER MAGNET ASM.		*		1
8	MAT80114T00	PLUNGER PIN		*		1
9	RE0300000K0	E-RING 3		*		2
10	MAT80115T00	WASHER		*		1
11	NM6040001SE	NUT M4		*		2
12	WS0411002KB	SPRING WASHER 4		*		1
13	MAT03218000B	MAGNET WITH MOUNTING BASE		*		1
14	SM4041001SB	SCREW M4 L=10		*		4
15	B21160190A0	PIN ASM.		*		1
16	CQ200000000	OIL WICK		*		0.2
17	MAT00509000	KNIFE DRIVING LEVER		*		1
18	SS4090615SP	SCREW 9/64-40 L=6		*		1
19	D2611555B0B	CABLE HOLDER B		*		1
20	SS7090850SP	SCREW 9/64-40 L=8		*		1
21	SS4080610SP	SCREW 1/8-44 L=6.4				1
22	WZ0420350KP	DISC SPRING				1
23	MAT016110A0	MAGNET BASE A ASM.				1
24	SM4030601SN	SCREW M3 X 6				2
25	WP03305000E	WASHER 3.3X6X0.5				2
26	40042864	COUNT SENSOR ASM.				1
27	MAT03202000	SWITCH BASE		*		1
28	40042865	COUNT SENSOR		*		1
29	SM1020801SN	SCREW M2 L=8		*		1
30	SS9151630CP	SCREW 15/64-28 L=15.5				2
31	MAT01601000B	KNIFE BASE SPACER SCREW				2
32	MAT015010A0A	KNIFE BASE JUNCTION				1
33	MAT01501000A	KNIFE DRIVING SHAFT MOUNTING B		*		1
34	MAT80102T00	KINFE DRIVING SHAFT BUSHING		*		1
35	SS4080610SP	SCREW 1/8-44 L=6.4		*		2
36	MAT005060A0	KNIFE DRIVING ARM ASM.		*		1
37	SS6090810SP	SCREW 9/64-40 L= 7.5		*		1
38	SD0500481TP	HINGE SCREW D= 5 H= 4.8		*		1
39	MAT00504000	DRIVING SHAFT		*		1
40	MAT80105T00	SPRING		*		1
41	WP0510516SD	WASHER 5.1X7.5X0.5		*		2
42	MAT80106T00	SNAP RING		*		1
43	MAT00505000	KNIFE		*		1
44	SS3060410SP	SCREW 3/32-56 L=4		*		2
45	MAT81102T00A	KNIFE STOPPER		*		1
46	MAT01603000	SIDE COVER	FOR MO-6△00S,MO-6900R			1
47	MAT01603A00	SIDE COVER	FOR MO-6900G,MO-6900J			1

KNIFE & MAGNET COMPONENTS

2. KNIFE & MAGNET COMPONENTS

メス・マグネット関係

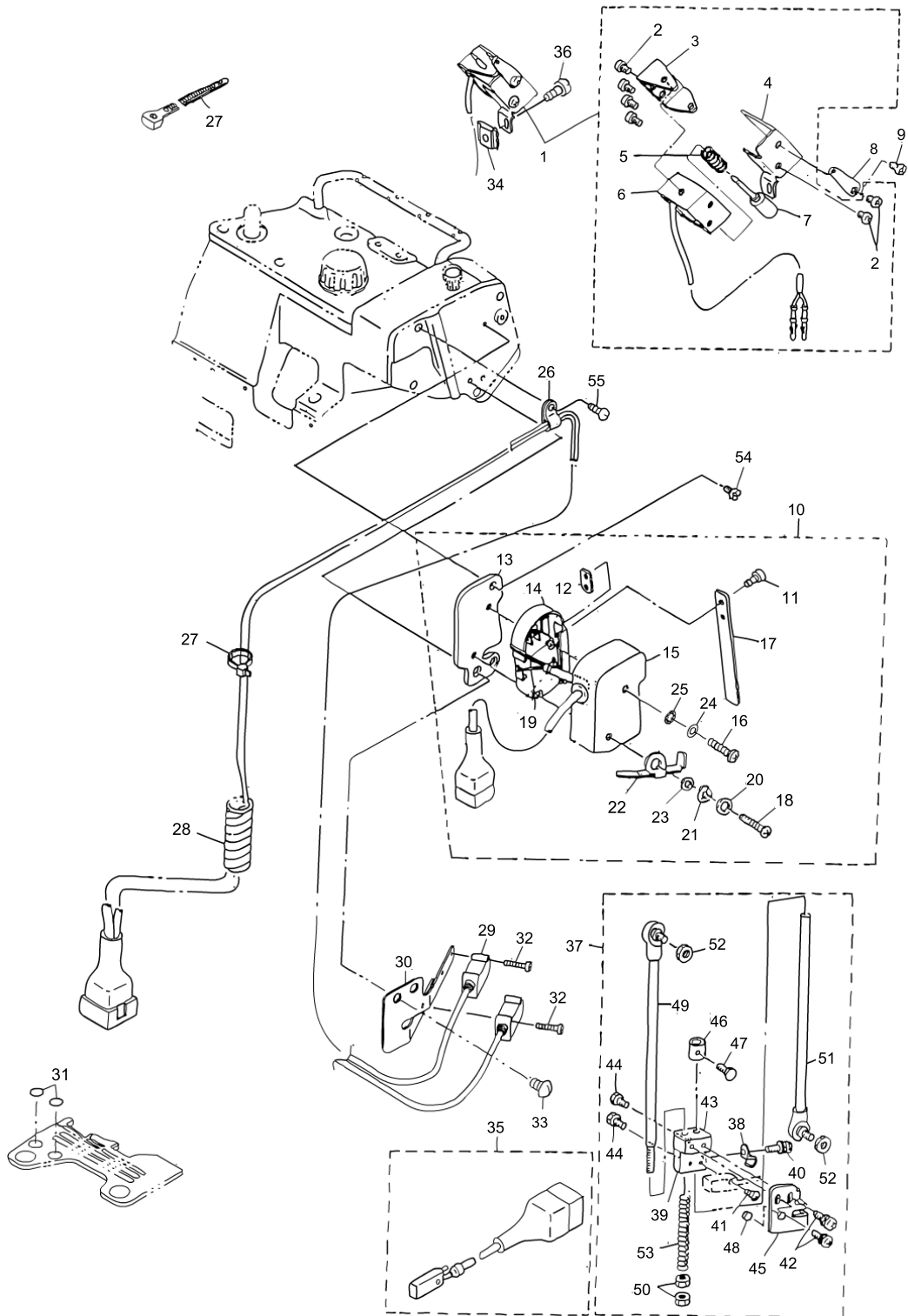


KNIFE & MAGNET COMPONENTS

No.	Parts No.	Parts name	Remarks	Level	Cons	Qty
48	MAT04001000	KNIFE BASE COVER	FOR MO-6Δ00S,MO-6900G			1
49	SS5090610SP	SCREW 9/64-40 L=6				2
50	SS6090810SP	SCREW 9/64-40 L= 7.5				1
51	NS6090310SP	NUT 9/64-40				1
52	MAT81104TA0	PIPE ASM.	FOR SEMI-SUNKEN TABLE			1
53	MAT81105T00	VACUUM ADJUSTING VALVE	FOR SEMI-SUNKEN TABLE	*		1
54	MAT81106T00	VALVE NET	FOR SEMI-SUNKEN TABLE	*		1
55	MAT81104T00	PIPE	FOR SEMI-SUNKEN TABLE	*		1
56	MAT81104T0B	PIPE (B)	FOR FULLY-SUNKEN TABLE			1
57	MAT04007000	KNIFE BASE COVER B	FOR MO-6900R,MO-6900J			1
58	SS6120940SP	SCREW 3/16-28 L=9				2

SENSOR & TENSION RELEASE MAGNET COMPONENTS

3. SENSOR & TENSION RELEASE MAGNET COMPONENTS センサー・糸ゆるめマグネット関係

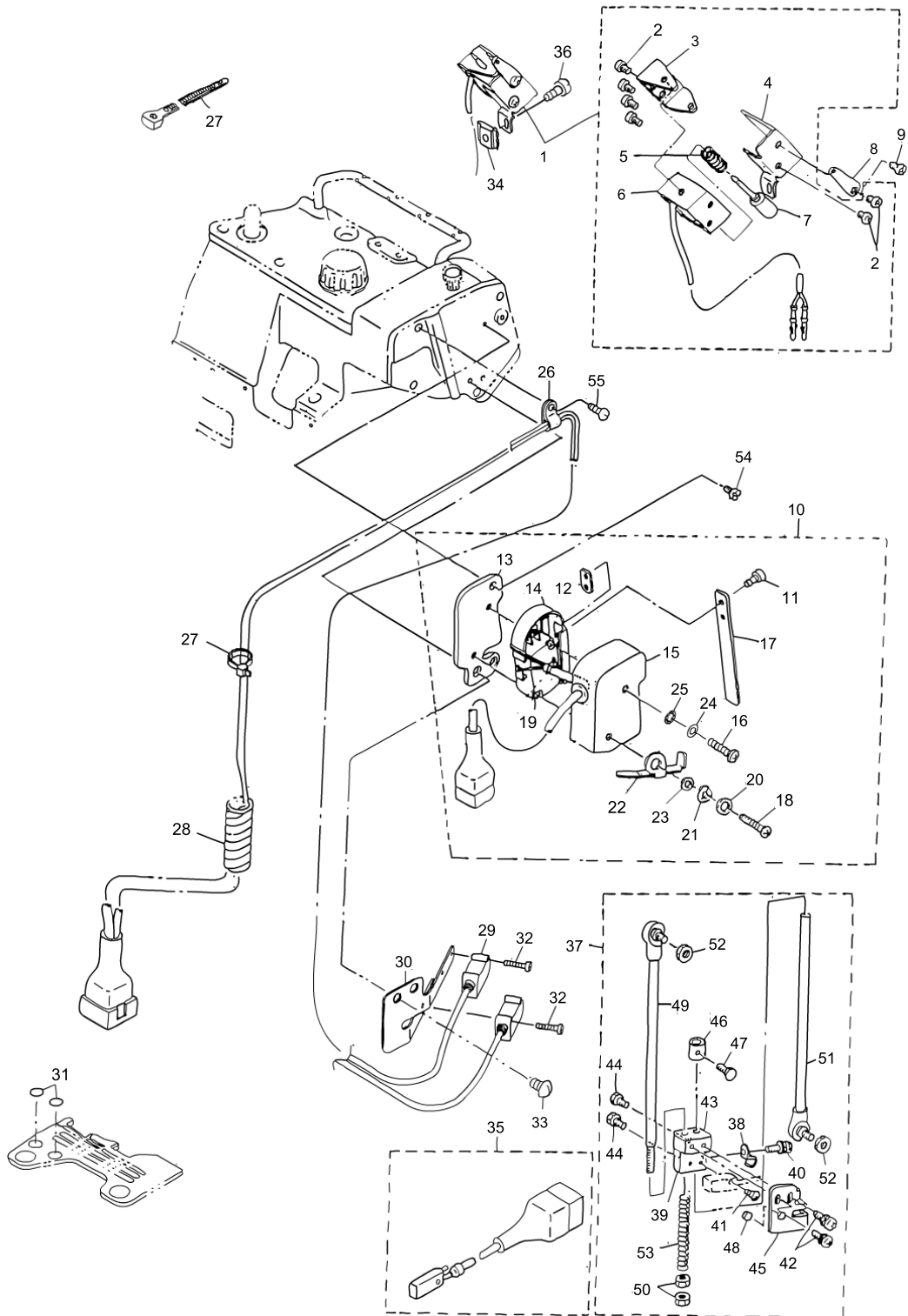


SENSOR & TENSION RELEASE MAGNET COMPONENTS

No.	Parts No.	Parts name	Remarks	Level	Cons	Qty
1	40042866	TENSION RELEASE MAGNET ASM.				1
2	SM4030401SC	SCREW M3X0.5 L=4		*		6
3	MAT81125T00A	TENSION RELEASING MAGNET COVER		*		1
4	40009721	MAGNET ASM.		*		1
5	MAT81124T00A	SPRING		*		1
6	MAT01631000	TENSION RELEASE MAGNET		*		1
7	MAT81123T00A	TENSION RELEASING PLUNGER		*		1
8	MAT01633000	THREAD GUIDE	FOR TWO-NEEDLE OVEREDGER AND SAFETY STITCHER			1
9	SM4030601SN	SCREW M3 X 6	FOR TWO-NEEDLE OVEREDGER AND SAFETY STITCHER			1
10	40042863	THREAD CUTTER AWITCH ASM.				1
11	SM4860501SC	SCREW M 2.6 X 5		*		2
12	MAT01663000	PUSH AUXILIARY REAR PLATE		*		1
13	MAT01652000	SWITCH INSTALLING PLATE		*		1
14	MAT01653000	SWITCH PUSH PLATE		*		1
15	MAT03220000	SWITCH COVER		*		1
16	SM4031401SC	SCREW M3X0.5 L=14		*		1
17	MAT03902000	PUSH AUXILIARY PLATE		*		1
18	SM4031601SC	SCREW M3 L=16		*		1
19	MAT80120T00	MICROSWITCH		*		1
20	WP0330501SB	WASHER M3		*		1
21	WZ0541510KP	WAVED WASHER 5.4X9.0X0.3		*		1
22	MAT00614000	SWITCH STOPPER		*		1
23	MAT00615000	STOPPER COLLAR		*		1
24	WP0320500SC	WASHER M3		*		1
25	WT0320001KN	WASHER		*		1
26	G5066110000	CORD HOLDER				1
27	EA9500B0100	CABLE BAND				2
28	G5182120000	SPIRAL TUBE				0.2
29	40029548	SENSOR ASM.				1
30	40022695	SENSOR BASE				1
31	40029549	REFLECTOR				2
32	SM6021000TP	SCREW				4
33	SS3090710TP	SCREW 9/64-40 L=7				2
34	MAT04005000	MAGNET BASE				1
35	40042867	PEDAL SENSOR				1
36	SS7110840SP	SCREW 11/64-40 L=7.8				1
37	MAT032130A0	CONNECTING ROD ASM.				1
38	B3538112000	OIL RETURN TUBE HOLDER		*		1
39	MAT03210000	PEDAL SWITCH INSTALLING BASE		*		1
40	SL4030681SC	SCREW M3 L=6		*		1
41	SM1020801SN	SCREW M2 L=8		*		1
42	SL4030681SC	SCREW M3 L=6		*		2
43	MAT03211000	MAGNET INSTALLING BASE		*		1
44	SM9060813SE	SCREW M6 L=8		*		2
45	MAT03212000	MAGNET MOUNTING PLATE		*		1

SENSOR & TENSION RELEASE MAGNET COMPONENTS

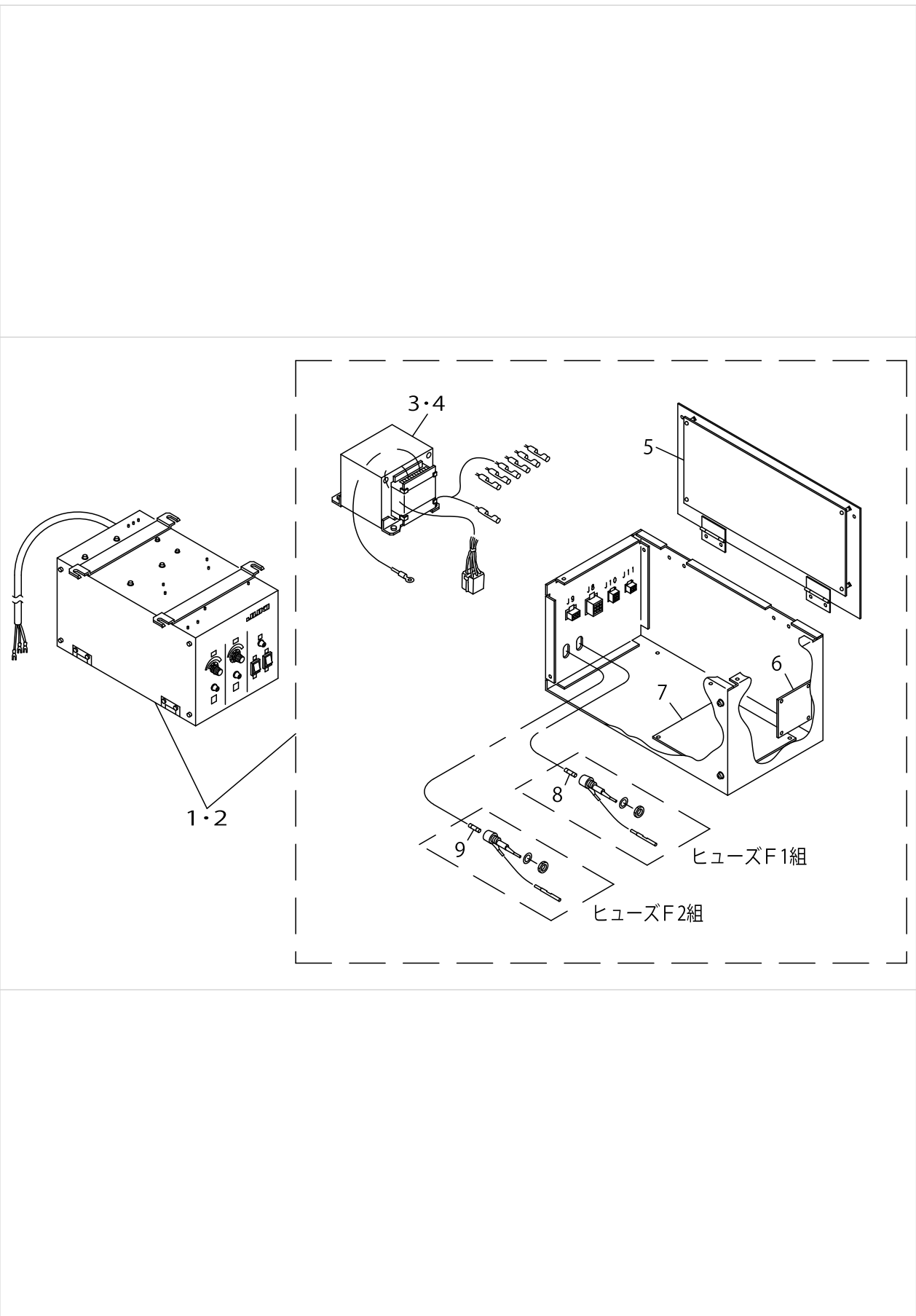
3. SENSOR & TENSION RELEASE MAGNET COMPONENTS センサー・糸ゆるめマグネット関係



SENSOR & TENSION RELEASE MAGNET COMPONENTS

No.	Parts No.	Parts name	Remarks	Level	Cons	Qty
46	F1006004000	STOPPER		*		1
47	SM9060813SE	SCREW M6 L=8		*		1
48	MAT01266000	MAGNET		*		1
49	MAT81137TA0	JOINT BAR B ASM.		*		1
50	NM6060003SC	NUT M6		*		2
51	F10050040A0	JOINT BAR ASM.		*		1
52	NM6060001SE	NUT M6		*		2
53	D7130555B00	SPRING		*		1
54	SS6090610SP	SCREW 9/64-40 L= 5.5				1
55	SS3090710TP	SCREW 9/64-40 L=7				1

CONTROL BOX COMPONENTS



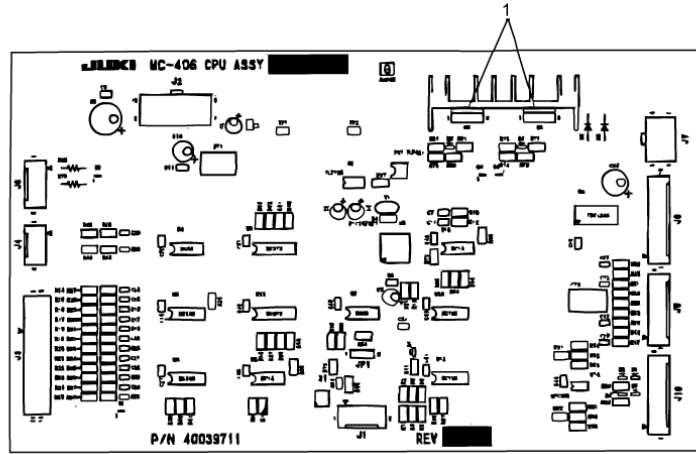
CONTROL BOX COMPONENTS

No.	Parts No.	Parts name	Remarks	Level	Cons	Qty
1	40042680	CONTROL BOX A COMPLETE	FOR 100V,115V,200V			1
2	40042681	CONTROL BOX B COMPLETE	FOR 220V,240V,380V,415V,440V			1
3	40042494	POWER SOURCE TRANSFORMER A ASM	FOR 100V,115V,200V	*		1
4	40042496	POWER SOURCE TRANSFORMER B ASM	FOR 220V,240V,380V,415V,440V	*		1
5	40039712	CPU PCB ASSY		*		1
6	40039714	ROTARY SW PCB ASSY		*		1
7	40039716	POWER PCB ASSY		*		1
8	E8523304000	FUSE 10A		*		1
9	E9602701000	FUSE 4A		*		1

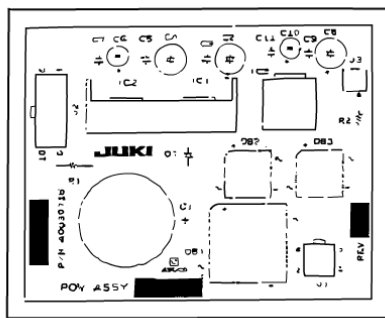
PRINTED CIRCUIT BOARD COMPONENTS

5. PRINTED CIRCUIT BOARD COMPONENTS

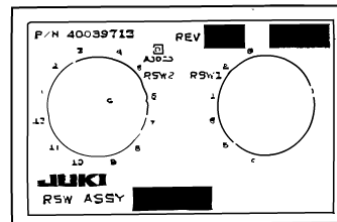
基板關係



CPU 基板組



電源基板組

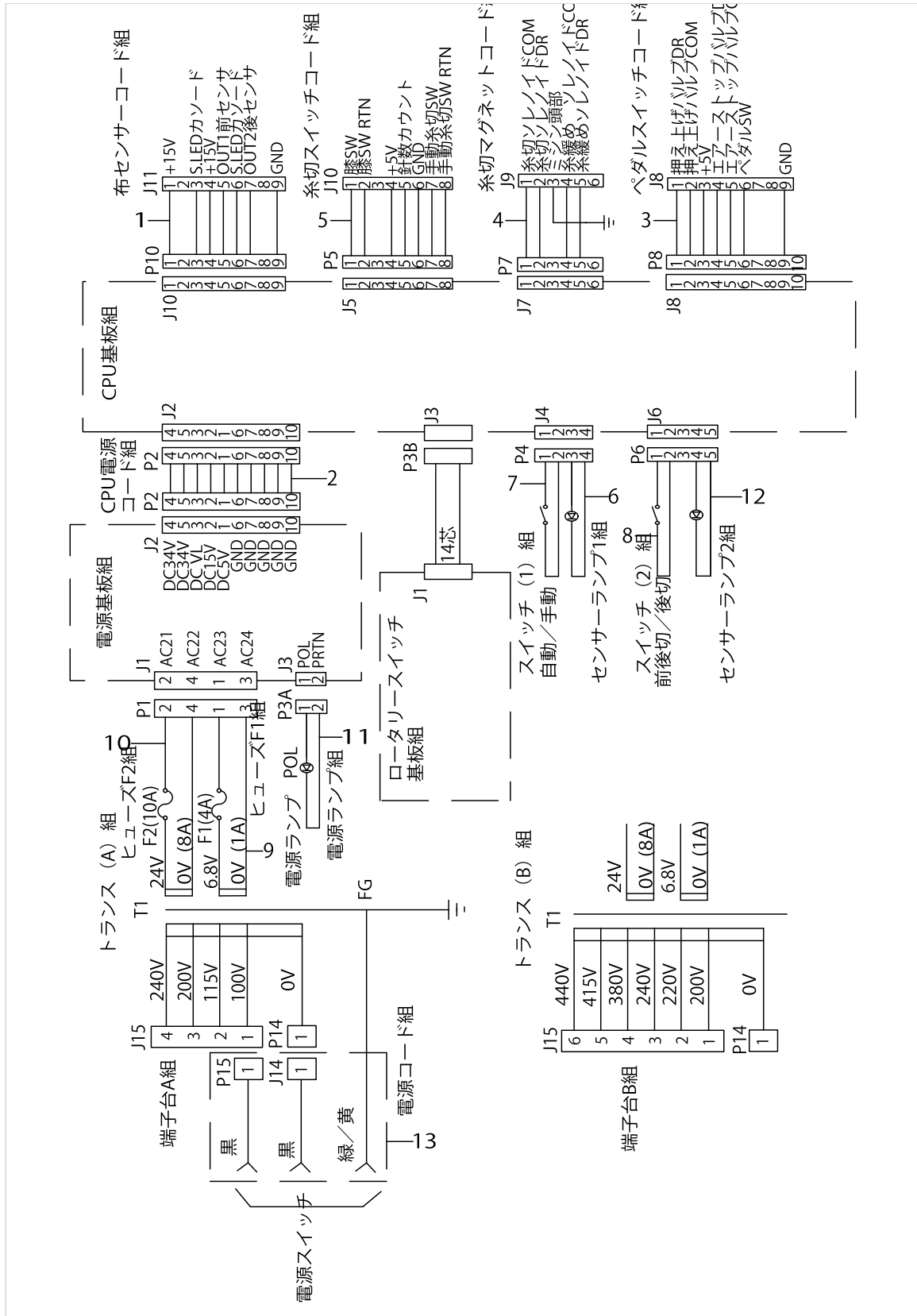


R SW 基板組

PRINTED CIRCUIT BOARD COMPONENTS

No.	Parts No.	Parts name	Remarks	Level	Cons	Qty
1	HT005940000	FET		*		2

WIRING DIAGRAM



WIRING DIAGRAM

No.	Parts No.	Parts name	Remarks	Level	Cons	Qty
1	40042247	CLOTH SENSOR CORD ASM.		*		1
2	40042254	CPU POWER SOURCE CORD ASM.		*		1
3	40042388	PEDAL SWITCH CORDE ASM.		*		1
4	40042389	THREAD CUTTER MAGNET CORD ASM.		*		1
5	40042390	THREAD CUTTER SWITCH CORD ASM.		*		1
6	40042684	SENSOR LAMP 1 ASM.		*		1
7	40042685	SWITCH 1 ASM.		*		1
8	40042686	SWITCH 2 ASM.		*		1
9	40042687	FUSE F1 ASM.		*		1
10	40042688	FUSE F2 ASM.		*		1
11	40042689	POWER SOURCE LAMP ASM.		*		1
12	40043104	SENSOR LAMP 2 ASM.		*		1
13	M85131400A0A	POWER SOURCE CORD ASM.		*		1

HOW TO MAKE USE OF THIS PARTS LIST

1.As to "#01" and "#02" refer to the "Note" given at the bottom of the respective pages.

2.Codes on the "Qty" column

- Each numeral indicates the number of parts required.
- "0.1" and "2.5" indicate the length (in meters) of the respective parts.

3.Parentheses mean that the corresponding part is a subpart that constructs an assembly part.

4.Dotted lines on the Figures indicate assembly parts.

1. リストページの# 0 1、# 0 2の印は、ページ下の"注記"の説明を参照下さい。
2. 数量欄の数字は、個数を表し、0. 1、2. 5等の数値は、長さ（単位メートル）を表します。
3. 数量欄の（ ）は、組部品を構成している子部品であることを意味します。
4. イラストページの-----枠は、組構成であることを意味します。

NUMERICAL INDEX OF PARTS

PART NO	PAGE	REF NO.	PART NO	PAGE	REF NO.	PART NO	PAGE	REF NO.
40009721	8	4	40043905	2	1·2·5·6·9·10- ·13·14	MAT03202000	4	27
40022695	8	30				MAT03210000	8	39
40029548	8	29	40043906	2	3·4·7·8·11·1- 2·15·16	MAT03211000	8	43
40029549	8	31				MAT03212000	8	45
40039712	12	5	40043907	2	3·4·7·8·11·1- 2·15·16	MAT032130A0	8	37
40039714	12	6	40043908	2	1·2·5·6·9·10- ·13·14	MAT03218000B	4	13
40039716	12	7				MAT03219000	4	6
40042247	16	1	40043909	2	1·2·5·6·9·10- ·13·14	MAT03220000	8	15
40042254	16	2				MAT03902000	8	17
40042388	16	3	40043910	2	3·4·7·8·11·1- 2·15·16	MAT04001000	6	48
40042389	16	4				MAT04005000	8	34
40042390	16	5	40043911	2	3·4·7·8·11·1- 2·15·16	MAT04007000	6	57
40042494	12	3·4	B21160190A0	4	15	MAT80102T00	4	34
40042496	12	3·4	B2526704000	4	4	MAT80105T00	4	40
40042572	4	7	B3538112000	8	38	MAT80106T00	4	42
40042680	12	1·2	CQ200000000	4	16	MAT80114T00	4	8
40042681	12	1·2	D2611555B0B	4	19	MAT80115T00	4	10
40042684	16	6	D7130555B00	10	53	MAT80120T00	8	19
40042685	16	7	E8523304000	12	8	MAT81102T00A	4	45
40042686	16	8	E9602701000	12	9	MAT81104T00	6	55
40042687	16	9	EA9500B0100	8	27	MAT81104T0B	6	56
40042688	16	10	F10050040A0	10	51	MAT81104TA0	6	52
40042689	16	11	F1006004000	10	46	MAT81105T00	6	53
40042743	4	1	G5066110000	8	26	MAT81106T00	6	54
40042863	8	10	G5182120000	8	28	MAT81123T00A	8	7
40042864	4	26	HT005940000	14	1	MAT81124T00A	8	5
40042865	4	28	M85131400A0A	16	13	MAT81125T00A	8	3
40042866	8	1	MAT00504000	4	39	MAT81132T00	4	2
40042867	8	35	MAT00505000	4	43	MAT81137TA0	10	49
40043104	16	12	MAT005060A0	4	36	NM6040001SE	4	11
40043894	2	1·2·5·6·9·10- ·13·14	MAT00509000	4	17	NM6060001SE	10	52
40043897	2	1·2·5·6·9·10- ·13·14	MAT00614000	8	22	NM6060003SC	10	50
40043898	2	3·4·7·8·11·1- 2·15·16	MAT00615000	8	23	NS6090310SP	6	51
40043899	2	3·4·7·8·11·1- 2·15·16	MAT01266000	10	48	RE0300000K0	4	9
40043900	2	1·2·5·6·9·10- ·13·14	MAT01501000A	4	33	SD0500481TP	4	38
40043901	2	1·2·5·6·9·10- ·13·14	MAT015010A0A	4	32	SL4030681SC	8	42
40043902	2	3·4·7·8·11·1- 2·15·16	MAT01601000B	4	31	SM1020801SN	4	29
40043903	2	3·4·7·8·11·1- 2·15·16	MAT01603000	4	46	SM1020801SN	8	41
40043904	2	1·2·5·6·9·10- ·13·14	MAT01603A00	4	47	SM4030401SC	8	2
			MAT016110A0	4	23	SM4030601SN	4	24
			MAT01631000	8	6	SM4030601SN	8	9
			MAT01633000	8	8	SM4031401SC	8	16
			MAT01652000	8	13	SM4031601SC	8	18
			MAT01653000	8	14	SM4040601SB	4	3
			MAT01663000	8	12	SM4041001SB	4	14

NUMERICAL INDEX OF PARTS

PART NO	PAGE	REF NO.
SM4860501SC	8	11
SM6021000TP	8	32
SM9060813SE	8	47
SM9060813SE	10	47
SS3060410SP	4	44
SS3090710TP	8	55
SS3090710TP	10	55
SS4080610SP	4	35
SS4090615SP	4	18
SS5090610SP	6	49
SS6090610SP	10	54
SS6090630SP	4	5
SS6090810SP	4	50
SS6090810SP	6	50
SS6120940SP	6	58
SS7090850SP	4	20
SS7110840SP	8	36
SS9151630CP	4	30
WP0320500SC	8	24
WP03305000E	4	25
WP0330501SB	8	20
WP0510516SD	4	41
WS0411002KB	4	12
WT0320001KN	8	25
WZ0420350KP	4	22
WZ0541510KP	8	21