

MODEL : DMN-5420N-7

List No : 0888-10

# PARTS LIST

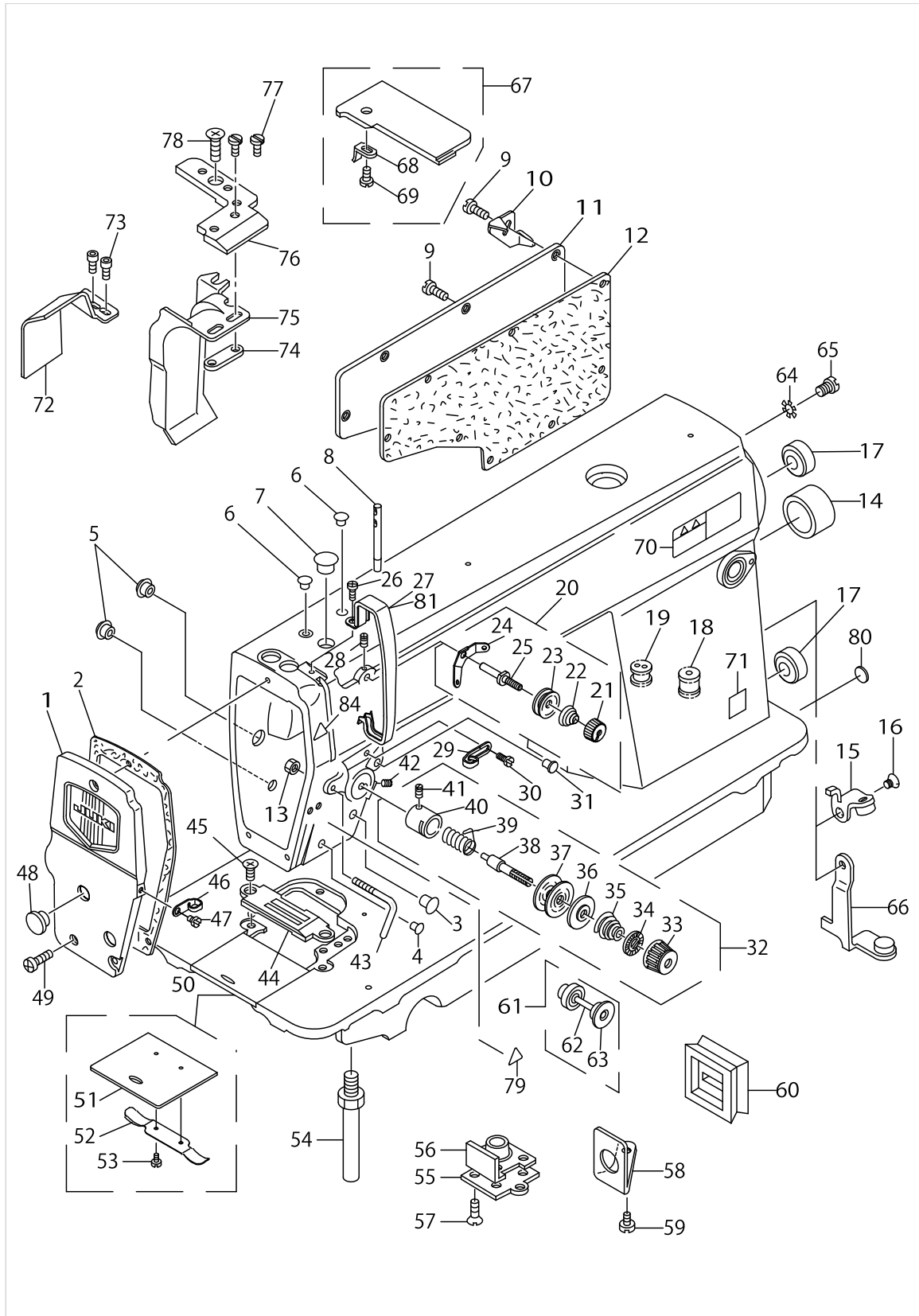
Published:09/22/2017

## CONTENTS

---

MACHINE FRAME & MISCELLANEOUS COVER COMPONENTS .....	1
MAIN SHAFT & THREAD TAKE-UP LEVER COMPONENTS .....	5
NEEDLE BAR, UPRIGHT SHAFT & HOOK DRIVING SHAFT COMPONENTS .....	7
HAND LIFTER COMPONENTS .....	9
FEED MECHANISM COMPONENTS.....	13
THREAD TRIMMER MECHANISM COMPONENTS.....	17
KNIFE COMPONENTS.....	21
NEEDLE BAR FRAME COMPONENTS.....	25
AUTOMATIC REVERSE FEED COMPONENTS.....	27
WIPER COMPONENTS.....	29
OIL LUBRICATION COMPONENTS .....	31
OIL RESERVOIR COMPONENTS .....	33
BELT COVER & BOBBIN WINDER COMPONENTS .....	35
THREAD STAND COMPONENTS.....	37
TABLE OF EXCHANGING GAUGE PARTS (1).....	39
TABLE OF EXCHANGING GAUGE PARTS (2).....	43
LIST FOR INFORMATION OF CHANGE.....	47
HOW TO MAKE USE OF THIS PARTS LIST .....	48

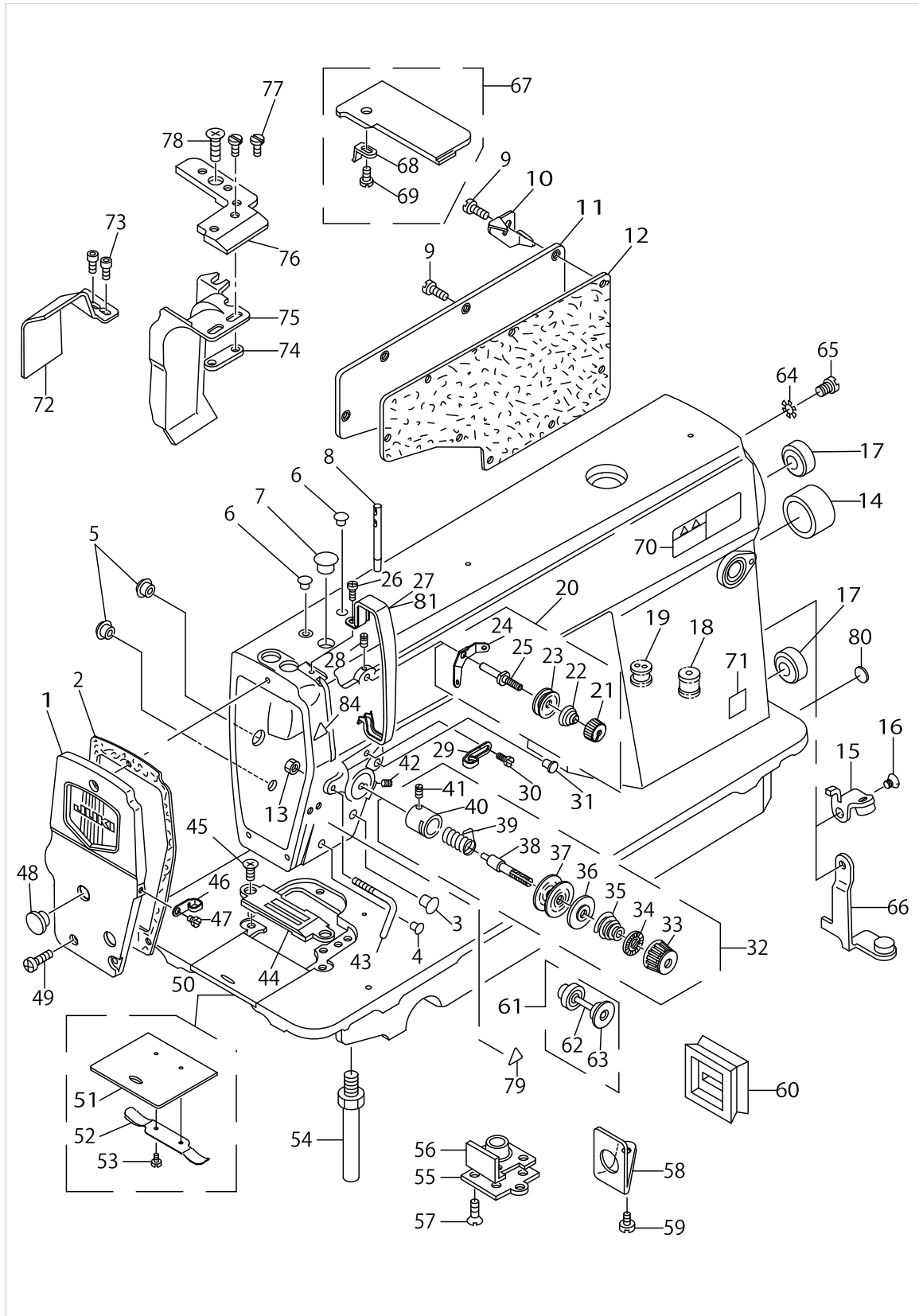
# MACHINE FRAME & MISCELLANEOUS COVER COMPONENTS



MACHINE FRAME & MISCELLANEOUS COVER COMPONENTS

No.	Parts No.	Parts name	Remarks	Level	Cons	Qty
1	11325750	FACE PLATE ASM.				1
2	11300506	FACE PLATE GASKET				1
3	TA1250504R0	RUBBER PLUG				1
4	TA0850604R0	RUBBER PLUG				1
5	TA1250504R0	RUBBER PLUG				2
6	TA0850604R0	RUBBER PLUG				2
7	TA1250705R0	RUBBER PLUG				1
8	22958300	NEEDLE THREAD GUIDE PIN				1
9	SS4120915SP	SCREW 3/16-28 L=9				8
10	11102605	CORD HOLDER	FOR DMN-5420N-7-0B,-WB			1
11	22900401	WINDOW PLATE				1
12	11003308	GASKET				1
13	NS6090310SP	NUT 9/64-40				1
14	TA2000502R0	RUBBER PLUG				1
15	11095254	LEVER STOPPER ASM.	FOR DMN-5420N-7-0B,-WB			1
16	SS1120710SP	SCREW 3/16-28 L=6.5	FOR DMN-5420N-7-0B,-WB			1
17	TA2101002R0	RUBBER PLUG				2
18	11030202	RUBBER BUSHING	FOR DMN-5420N-7-00			1
19	40111022	MAGNET CORD RUBBER	FOR DMN-5420N-7-0B,-WB			1
20	22945463	THREAD TENSION ASM. NO.1				1
21	22945703	THREAD TENSION NUT		*		1
22	22945505	THREAD TENSION SPRING		*		1
23	22945802	THREAD TENSION DISK		*		2
24	22945604	THREAD TENSION GUIDE		*		1
25	22945406	THREAD TENSION POST		*		1
26	SS4120615SP	SCREW 3/16-28 L=6				1
27	22900609	THREAD TAKE-UP LEVER COVER				1
28	SS4120615SP	SCREW 3/16-28 L=6				1
29	22920508	ARM THREAD GUIDE A				1
30	22921001	SCREW				1
31	TA0850604R0	RUBBER PLUG				1
32	22945356	THREAD TENSION ASM.				1
33	22921308	THREAD TENSION NUT		*		1
34	22921407	ROTATION STOPPER		*		1
35	22921704	THREAD TENSION SPRING A		*		1
36	22921803	DISK STOPPER		*		1
37	22921506	THREAD TENSION DISK		*		2
38	22921209	THREAD TENSION POST		*		1
39	22921605	THREAD TAKE-UP SPRING		*		1
40	22945307	THREAD TENSION POST BASE		*		1
41	SS8090670SP	SCREW 9/64-40 L=5.5		*		1
42	SS8150710TP	SCREW 15/64-28 L=7				1
43	22972608	ARM THREAD GUIDE C				1
44	B1190530D00	GAUGE DD				1
45	SS2110915SP	SCREW 11/64-40 L=8.5				2
46	22920607	ARM THREAD GUIDE B				1
47	SS6110610TP	SCREW 11/64-40 L=6				1

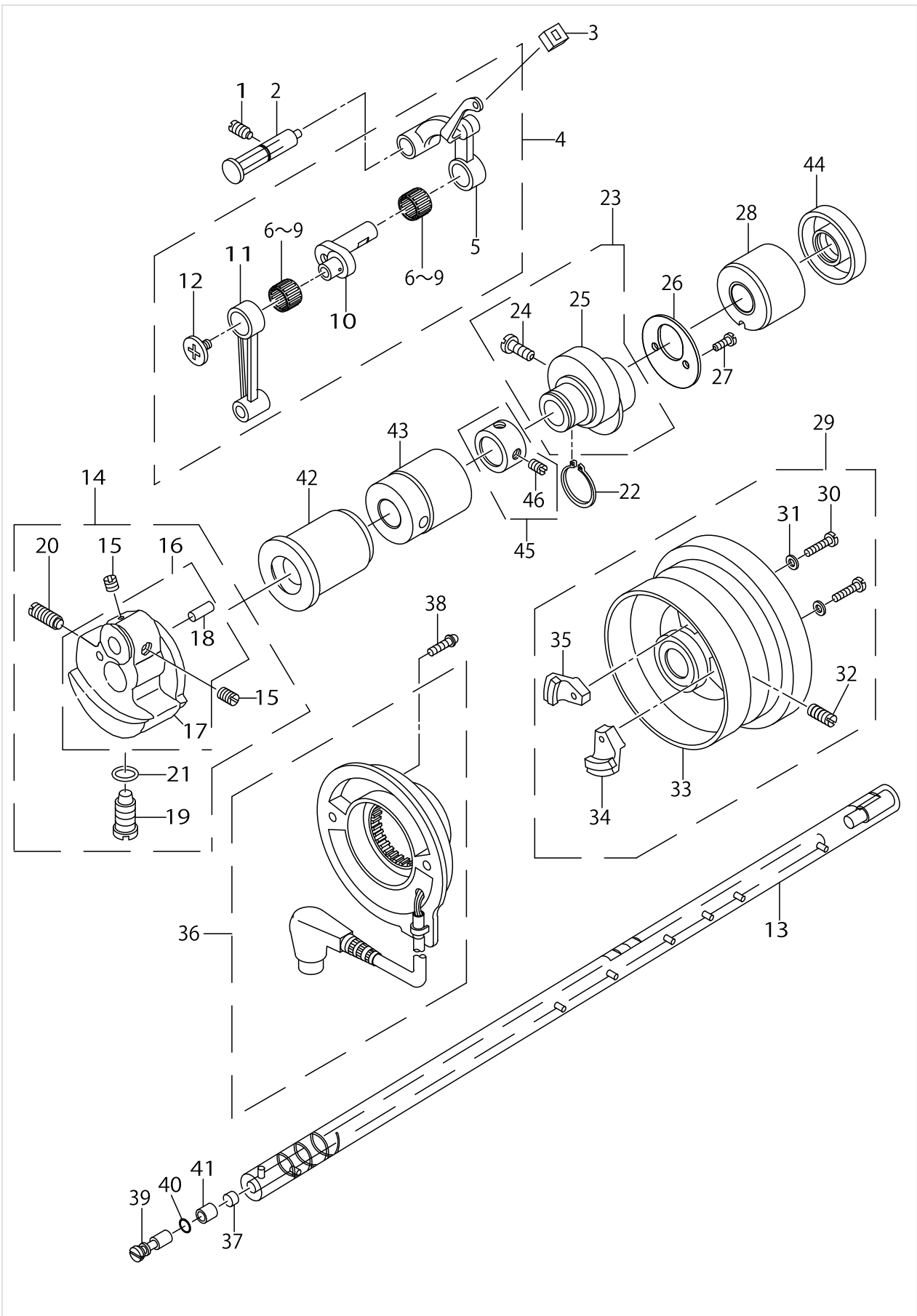
MACHINE FRAME & MISCELLANEOUS COVER COMPONENTS



MACHINE FRAME & MISCELLANEOUS COVER COMPONENTS

No.	Parts No.	Parts name	Remarks	Level	Cons	Qty
48	TA1250406R0	RUBBER PLUG D=12.5 L=4				2
49	SS4121015SP	SCREW 3/16-28 L=10				3
50	22901250	SLIDE PLATE ASM.				1
51	B1110012000	SLIDE PLATE		*		1
52	11001609	BED SLIDE SPRING		*		1
53	SS6060210SP	SCREW 3/32-56 L=1.9		*		1
54	22901003	BED SCREW STUD				4
55	11300407	PRESSER BAR SUPPORT				1
56	11300605	GASKET				1
57	SS1120710SP	SCREW 3/16-28 L=6.5				4
58	11345709	OIL SHIELD				1
59	SS6110610TP	SCREW 11/64-40 L=6				1
60	11345600	OIL RUBBER				1
61	B31334150A0	TENSION RELEASE PIN CAP ASM.				1
62	B3118415000	TENSION RELEASE PIN		*		1
63	B3136415000	CAP RING		*		1
64	WT0530002KS	TOOTHED WASHER D=5.3				1
65	SS4120615SP	SCREW 3/16-28 L=6				1
66	11372554	LEVER STOPPER ASM.	FOR DMN-5420N-7-00			1
67	B11155300AD	THROAT PLATE COVER				1
68	B1115522000A	OPEN COVER SPRING		*		1
69	SS4080310SP	SCREW 1/8-44 L=3.4		*		1
70	CM301300001	SAFETY LABEL				1
71	40116677	GOST_SAFTY_LABEL_S	FOR JE			1
72	11346400	WASTE MATERIAL GUIDE				1
73	11345808	SCREW				2
74	B1193530000	WASTE MATERIAL GUARD PLATE				1
75	11346905	WASTE MATERIAL GUARD E				1
76	11346004	NEEDLE PLATE A				1
77	SS6080410SP	SCREW 1/8-44 L=4				2
78	SS2110915SP	SCREW 11/64-40 L=8.5				2
79	CM300200001	ATTENTION SEAL				2
80	22901805	GROUND MARK				1
81	11415205	THREAD TAKE-UP LEVER COVER(JE)	FOR JE			1

MAIN SHAFT & THREAD TAKE-UP LEVER COMPONENTS

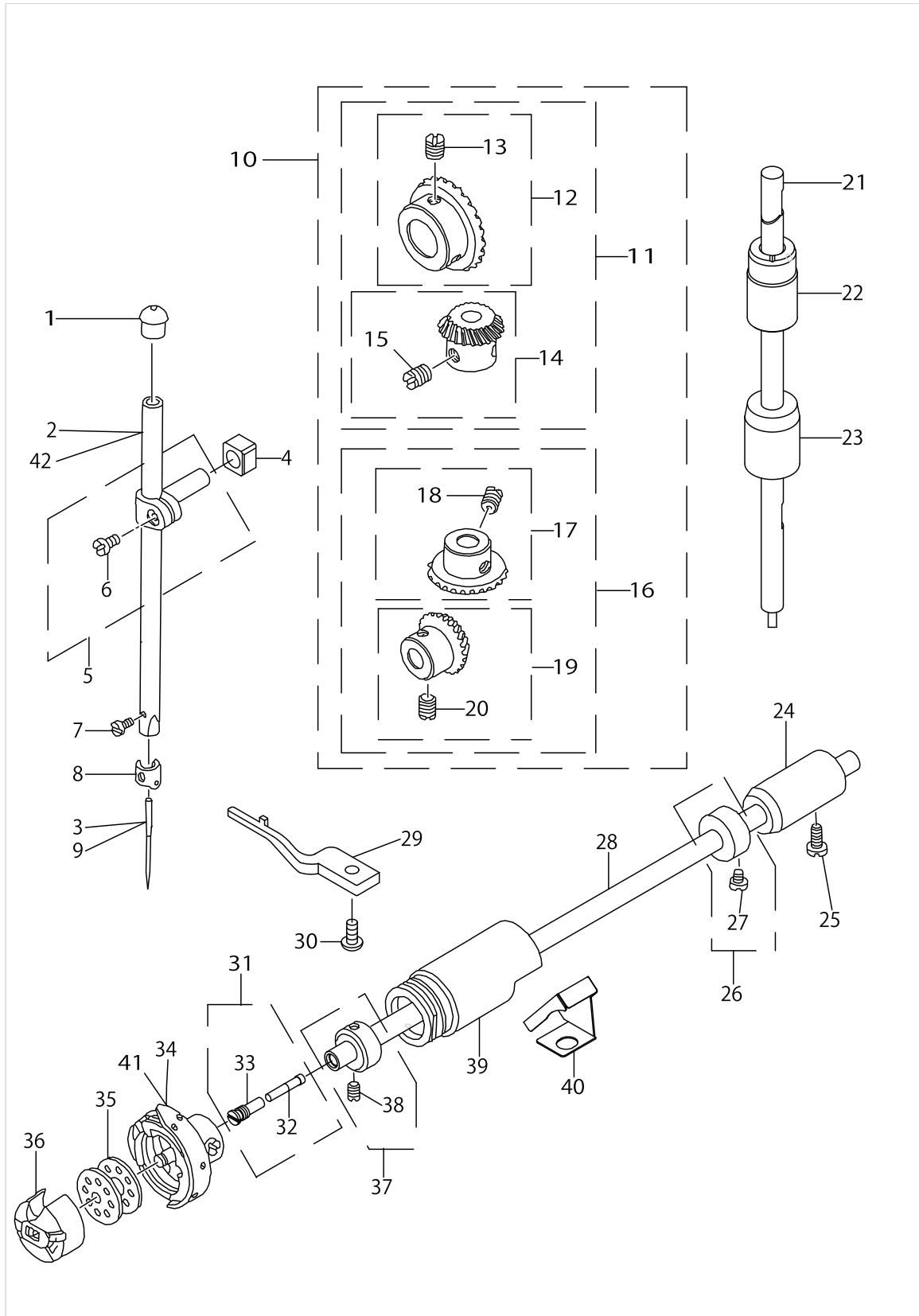


MAIN SHAFT & THREAD TAKE-UP LEVER COMPONENTS

No.	Parts No.	Parts name	Remarks	Level	Cons	Qty
1	SS8151150TP	SCREW 15/64-28 L=10.5				1
2	11017357	THREAD TAKE-UP CRANK SHAFT ASM.				1
3	22919203	OIL PROTECTING RUBBER				1
4	22918072	THREAD TAKE-UP LEVER COMPL.				1
5	22918064	THREAD TAKE-UP LEVER ASM.		*		1
6	22918403	NEEDLE BEARING A	SELECTIVE PARTS(A~D)	*		2
7	22918502	NEEDLE BEARING B	SELECTIVE PARTS(A~D)	*		2
8	22918601	NEEDLE BEARING C	SELECTIVE PARTS(A~D)	*		2
9	22918700	NEEDLE BEARING D	SELECTIVE PARTS(A~D)	*		2
10	22918106	NEEDLE BAR CRANK		*		1
11	22906606	NEEDLE BAR CRANK ROD		*		1
12	22918304	LEFT SCREW		*		1
13	11349008	MAIN SHAFT				1
14	40097024	COUNTER WEIGHT MN COMP.				1
15	SS8660610TP	SCREW 1/4-40 L=6		*		2
16	40095787	COUNTER WEIGHT_MN ASM.		*		1
17	40095788	COUNTER WEIGHT_MN		*		1
18	PS0400082KP	SPRING PIN		*		1
19	SS7681650TP	SCREW 9/32-28 L=16		*		1
20	SS8681650TP	SCREW 9/32-28 L=16		*		1
21	RO044240100	RUBBER RING		*		1
22	RC1850001KP	SNAP RING 18.5				1
23	11302353	FEED DRIVE ECCENTRIC CAM ASM.				1
24	SS6661110SP	SCREW 1/4-40 L=11		*		2
25	11302304	FEED DRIVE ECCENTRIC CAM		*		1
26	22910103	THRUST COLLAR				1
27	SS4090615SP	SCREW 9/64-40 L=6				2
28	11002409	MAIN SHAFT BUSHING REAR				1
29	11071495	HAND WHEEL ASM.				1
30	SS6111210SP	SCREW 11/64-40 L=12		*		2
31	WP0450801SD	WASHER 4.5X10X0.8		*		2
32	SS8151550SP	SCREW 15/64-28 L=15		*		2
33	11032158	HAND WHEEL ASM.		*		1
34	M40071100AA	MAGNET FITTING BASE A ASM.		*		1
35	M40071100AB	MAGNET FITTING BASE B ASM.		*		1
36	22937965	DYNAMO STATOR				1
37	11002904	ROLLER FELT				1
38	SL4051001MZ	SCREW M5 L=9.6				2
39	B1213552000A	OIL ADJUSTING PIN				1
40	RO029180100	RUBBER RING				1
41	B1215552000	OIL ADJUSTING COLLAR				1
42	11349107	BUSHING FRONT				1
43	22903306	BUSHING INTERMEDIATE				1
44	40105231	OIL SEAL				1
45	22904155	MAIN SHAFT THRUST COLLAR ASM.				1
46	SS8660610TP	SCREW 1/4-40 L=6		*		2



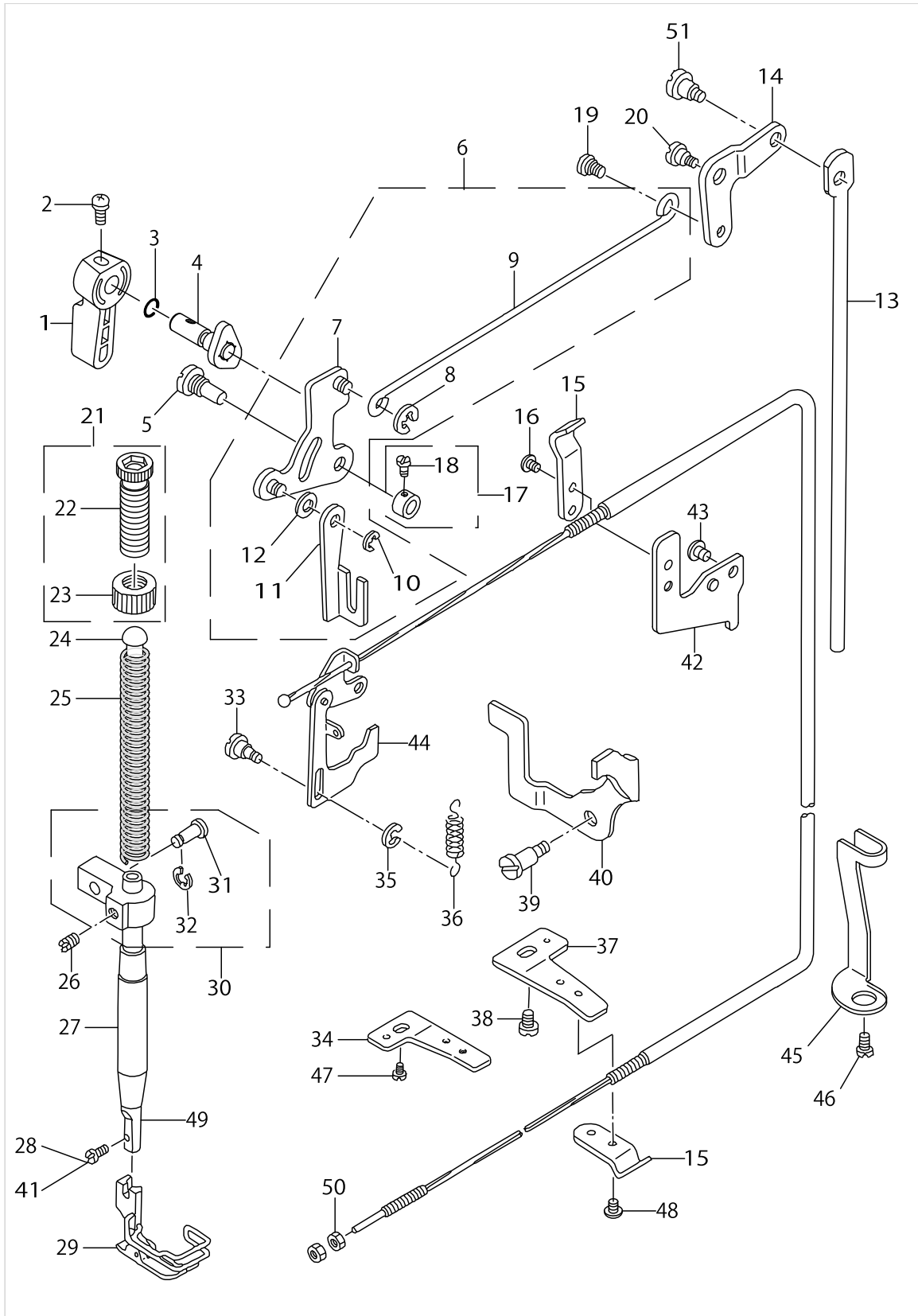
NEEDLE BAR, UPRIGHT SHAFT & HOOK DRIVING SHAFT COMPONENTS



NEEDLE BAR, UPRIGHT SHAFT & HOOK DRIVING SHAFT COMPONENTS

No.	Parts No.	Parts name	Remarks	Level	Cons	Qty
1	TA1250804R0	RUBBER PLUG				1
2	B1401530A00	NEEDLE BAR A				1
3	MC200500900	NEEDLE 134 NM90	FOR JE			1
4	40090058	SLIDE BLOCK				1
5	22906457	NEEDLE BAR HOLDER ASM.				1
6	SS6090670TP	SCREW 9/64-40 L=6		*		1
7	SS7080510TP	SCREW 1/8-44 L=4.5				1
8	B1418530000	NEEDLE BAR THREAD GUIDE				1
9	MDB100B1400	NEEDLE DBX1 #14				1
10	B13061550C0	GEAR & PINION ASM.				1
11	B13061550B0	GEAR & PINION ASM. UPPER		*		1
12	B13050120A0	GEAR ASM.		*		1
13	SS8660810TP	SCREW 1/4-40 L=8		*		2
14	B13061550A0	PINION ASM.		*		1
15	SS8660810TP	SCREW 1/4-40 L=8		*		2
16	B13071550B0	GEAR & PINION ASM. LOWER		*		1
17	B13071550A0	GEAR ASM. LARGE		*		1
18	SS8660810TP	SCREW 1/4-40 L=8		*		2
19	B13081550A0	PINION ASM.		*		1
20	SS8660810TP	SCREW 1/4-40 L=8		*		2
21	22905004	UPRIGHT SHAFT				1
22	22905103	UPRIGHT SHAFT BUSHING UPPER				1
23	11004207	UPRIGHT SHAFT BUSHING LOWER				1
24	22916308	HOOK DRIVING SHAFT BUSH REAR				1
25	SS4120915SP	SCREW 3/16-28 L=9				1
26	22917157	THRUST COLLAR ASM. REAR				1
27	SS6110420TP	SCREW 11/64-40 L=4.8		*		2
28	22916001	HOOK DRIVING SHAFT				1
29	11038809	BOBBIN CASE HOLDER				1
30	SS4110915TP	SCREW 11/64-40 L=9				1
31	22916555	OIL SEAL SCREW ASM.				1
32	11015906	OIL WICK		*		1
33	22916506	SET SCREW		*		1
34	11141355	HOOK ASM.				1
35	22932909	BOBBIN				1
36	11038759	BOBBIN CASE ASM.				1
37	22917058	THRUST COLLAR ASM. FRONT				1
38	SS8110410TP	SCREW 11/64-40 L=3.5		*		2
39	11351004	BUSHING FRONT				1
40	22942601	OIL SHIELD				1
41	11038650	HOOK ASM.	FOR USE IN JAPAN,JH			1
42	B1401530B00	NEEDLE BAR B	FOR JE			1

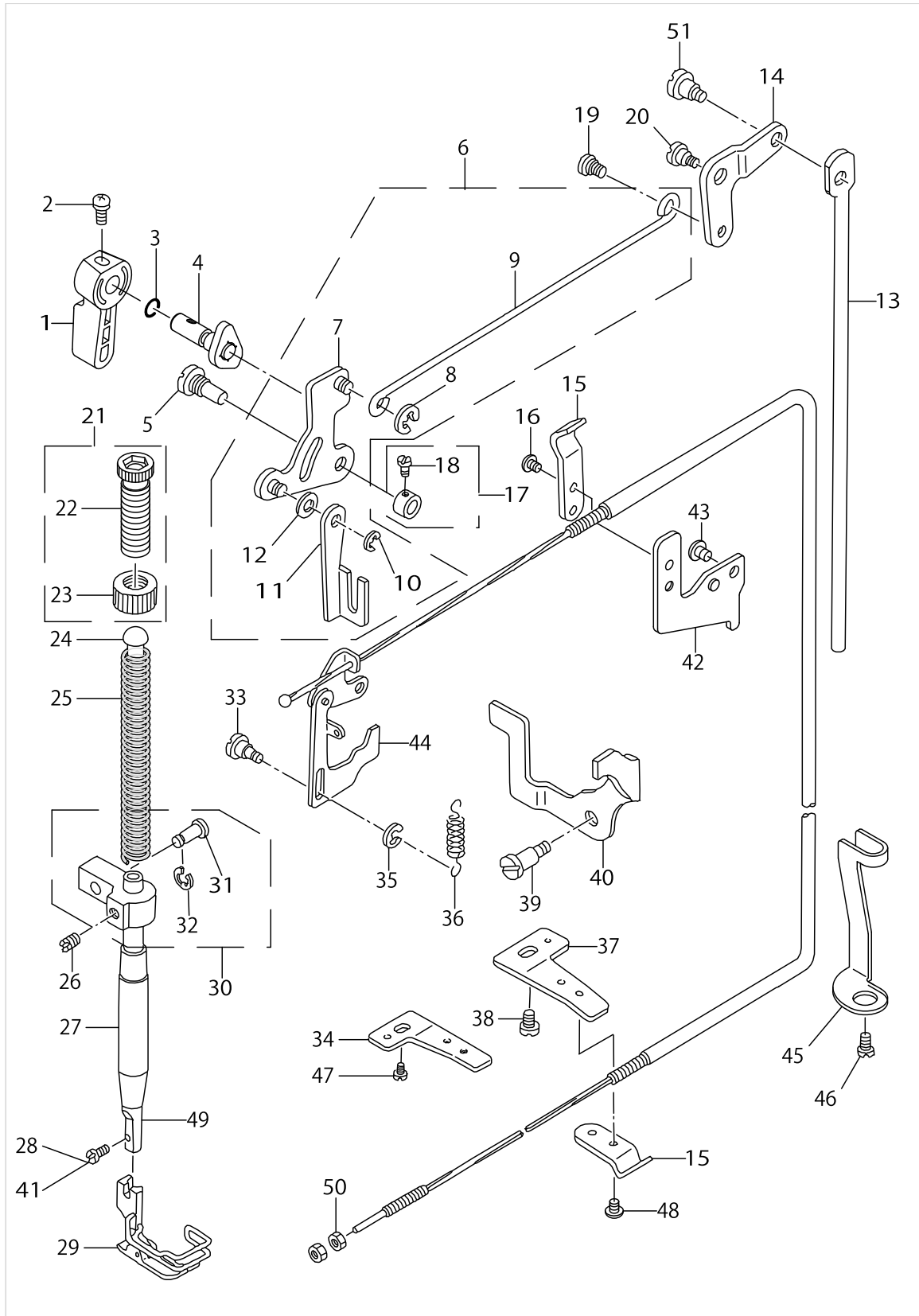
HAND LIFTER COMPONENTS



HAND LIFTER COMPONENTS

No.	Parts No.	Parts name	Remarks	Level	Cons	Qty
1	22907802	HAND LIFTER				1
2	B1521555000	SCREW				1
3	RO037180100	RUBBER RING				1
4	22908552	HAND LIFTER CAM ASM.				1
5	11301702	LINK SHAFT				1
6	11301652	LIFTING LEVER ASM.				1
7	22908156	LIFTING LINK ASM.		*		1
8	RE0500000K0	E-RING		*		2
9	22908305	KNEE LIFTER SIDE ROD		*		1
10	RE0500000K0	E-RING		*		1
11	11301603	LIFTING LEVER		*		1
12	WP0650876SD	WASHER 6.5X13X0.8		*		1
13	11205408	CONNECTING ROD				1
14	11205309	LIFTING LEVER LINK				1
15	22944508	WIRE PRESSER A				2
16	SS4110515SP	SCREW 11/64-40 L=5				2
17	CS064061ASP	THRUST COLLAR ASM.				1
18	SS7090620TP	SCREW 9/64-40 L=6.1		*		2
19	22908909	HINGE SCREW				1
20	SD0720331SP	HINGE SCREW D=7.24 H=3.3				1
21	22907554	PRESSER SPRING REGULATOR ASM.				1
22	22907505	PRESSER SPRING REGULATOR		*		1
23	22907604	PRESSER SPRING REGULATOR NUT		*		1
24	22907703	PRESSER GUIDE BAR				1
25	22907406	PRESSER SPRING				1
26	SS8660610TP	SCREW 1/4-40 L=6				1
27	40060989	PRESSER BAR BUSHING LOWER				1
28	SS7090710SP	SCREW 9/64-40 L=6.8	FOR DMN-5420N-7-00,-0B			1
29	B1524530DB0	PRESSER FOOT ASM.				1
30	11301355	NEEDLE BAR GUIDE BRACKET ASM.				1
31	11301405	PIN		*		1
32	RE0300000K0	E-RING 3		*		2
33	11306107	TENSION RELEASE PLATE SHAFT				1
34	22944706	WIRE PRESSER BASE LOWER	FOR DMN-5420N-7-00			1
35	RE0300000K0	E-RING 3				1
36	11305901	SPRING				1
37	22962807	WIRE PRESSER PLATE B	FOR DMN-5420N-7-0B,-WB			1
38	SS7110740TP	SCREW 11/64-40 L=7	FOR DMN-5420N-7-0B,-WB			1
39	SD0640261SP	HINGE SCREW D=3.65 H=2.6				1
40	11355609	TENSION RELEASE HOLDER				1
41	SS6090910SP	SCREW 9/64-40 L=9	FOR DMN-5420N-7-WB			1
42	22944607	WIRE PRESSER BASE UPPER				1
43	SS4120615SP	SCREW 3/16-28 L=6				1
44	11355351	TENSION RELEASE WIRE ASM.				1
45	11306206	WIRE CABLE HOLDER				1
46	SS4120615SP	SCREW 3/16-28 L=6				1
47	SS4150915SP	SCREW 15/64-28 L=9	FOR DMN-5420N-7-00			1

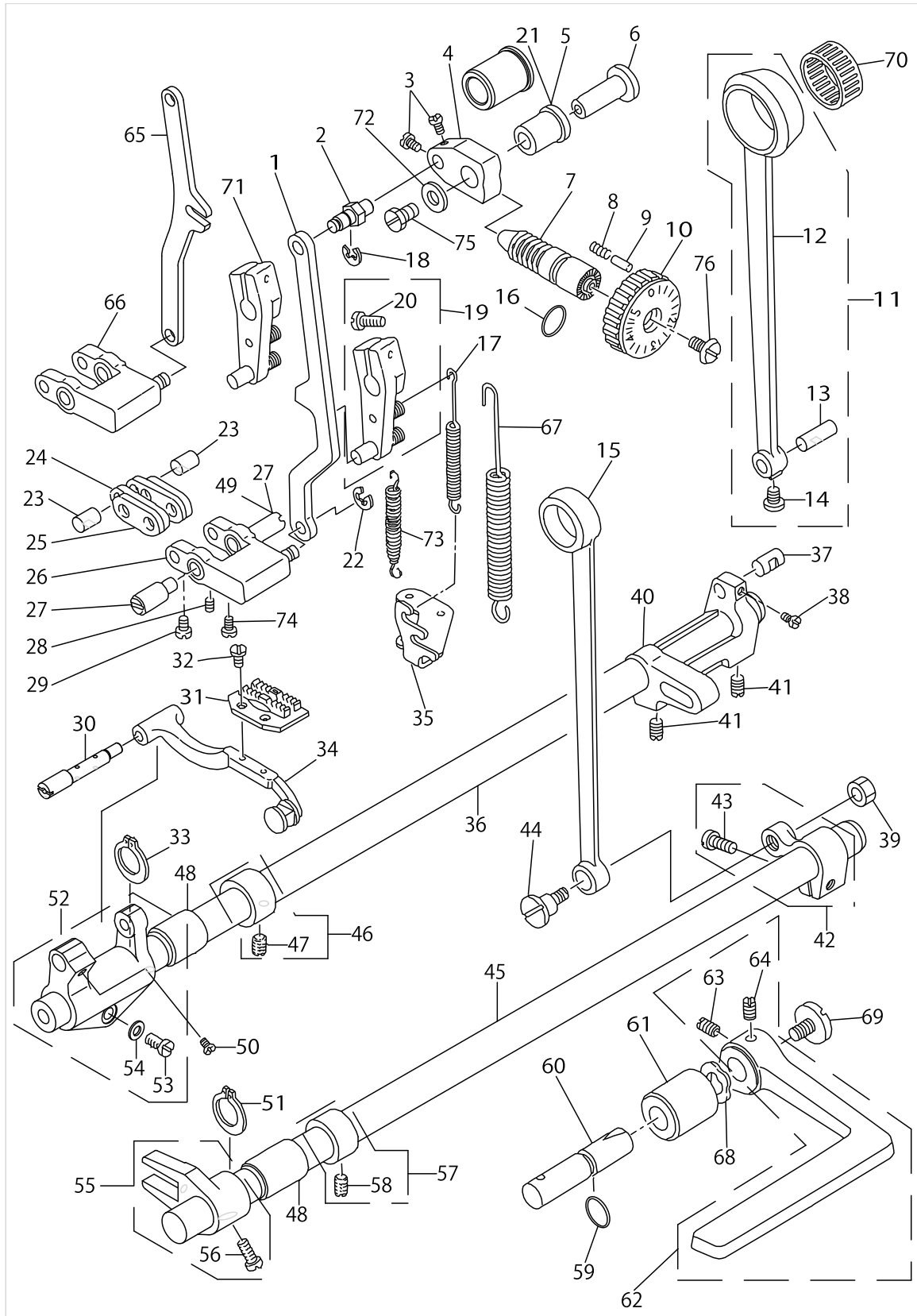
# HAND LIFTER COMPONENTS



HAND LIFTER COMPONENTS

No.	Parts No.	Parts name	Remarks	Level	Cons	Qty
48	SS4110515SP	SCREW 11/64-40 L=5				1
49	B1501530000	PRESSER BAR				1
50	NS6620310SP	NUT 3/16-32				2
51	SD0600322SD	HINGE SCREW D=6 H=3.2				1

FEED MECHANISM COMPONENTS

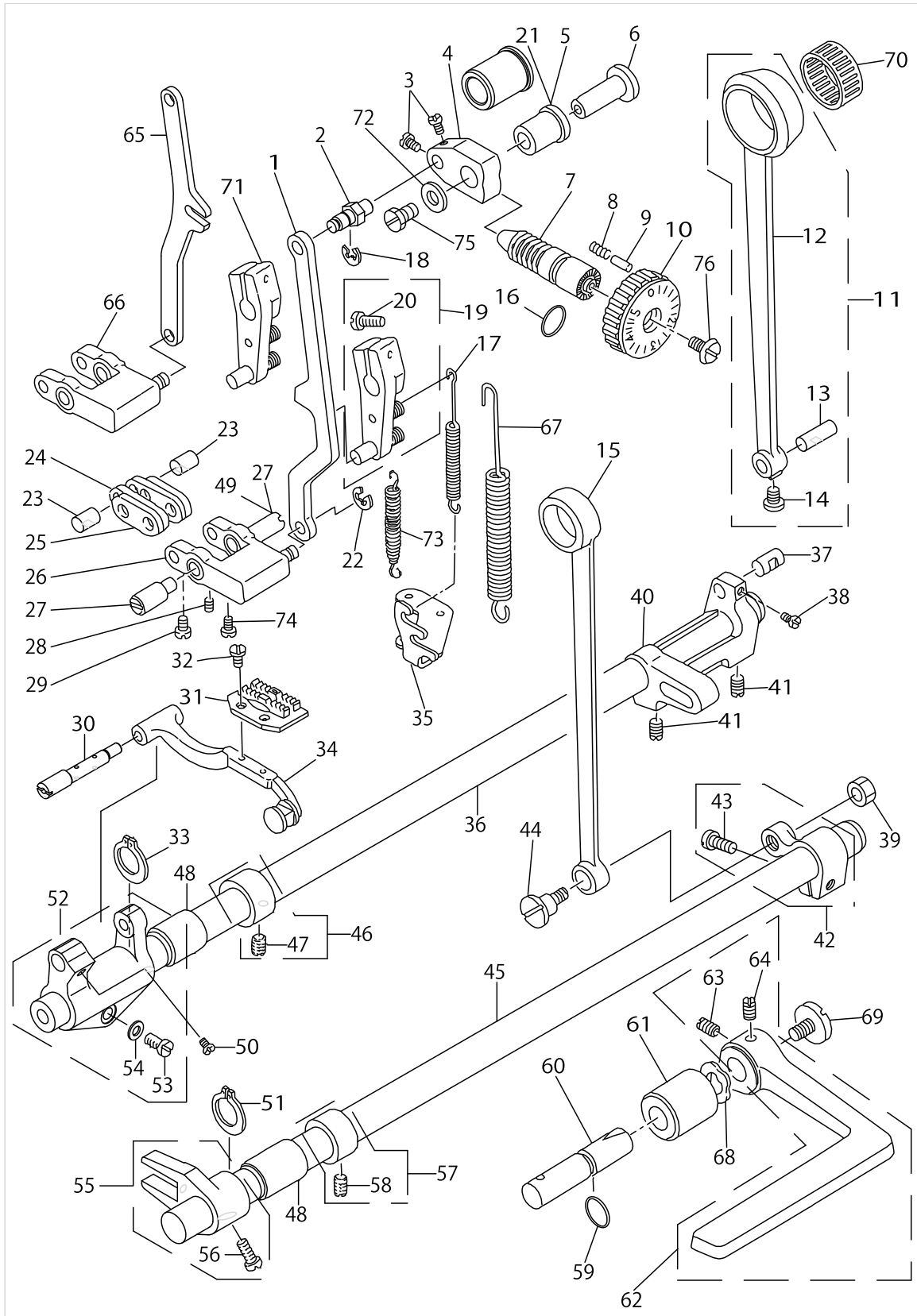


FEED MECHANISM COMPONENTS

No.	Parts No.	Parts name	Remarks	Level	Cons	Qty
1	11314507	FEED ADJUST ROD	FOR DMN-5420N-7-0B,-WB			1
2	22971204	FEED REGULATOR BASE PIN				1
3	SS6090560TP	SCREW 9/64-40 L=4.5				2
4	11303328	FEED REGULATOR BUSHING				1
5	11009800	FEED REGULATOR BUSHING	FOR DMN-5420N-7-0B,-WB			1
6	11385127	FEED REGULATOR SHAFT				1
7	22911804	FEED REGULATOR SCREW				1
8	B1148555000	SPRING				1
9	22912000	FEED REGULATOR PIN				1
10	11397007	FEED DIAL				1
11	40081220	ROCKERSHAFTCONNECTINGRODASM.				1
12	11302411	ROCKER SHAFT CONNECTING ROD		*		1
13	22911101	WALKING FOOT PIN C		*		1
14	SS6090620TP	SCREW		*		1
15	22915003	CONNECTING ROD				1
16	RO092270200	RUBBER RING				1
17	11302700	SPRING	FOR DMN-5420N-7-0B,-WB			1
18	RE0500000K0	E-RING				1
19	22971550	FEED LEVER ARM ASM.	FOR DMN-5420N-7-00			1
20	SS7121410TP	SCREW 3/16-28 L=14		*		1
21	22911705	FEED REGULATOR BUSHING				1
22	RE0500000K0	E-RING				1
23	22910905	WALKING FOOT PIN A				2
24	22910707	CONNECTING LINK B				2
25	22910608	CONNECTING LINK A				2
26	11303161	FEED ADJUST LINK ASM.	FOR DMN-5420N-7-00			1
27	22910806	ADJUST LINK FULCRUM SHAFT A				2
28	SS8150710TP	SCREW 15/64-28 L=7				1
29	SS6090620TP	SCREW				2
30	22940803	FEED BAR SHAFT				1
31	B1609530D00	FEED DOG D				1
32	SS4080620TP	SCREW 1/8-44 L=6				2
33	RC0150001KP	RETAINING RING 13.8				1
34	22940753	FEED BAR ASM.				1
35	22970602	FEED SPRING HOOK				1
36	22912901	FEED ROCKER SHAFT				1
37	22911002	WALKING FOOT PIN B				1
38	SS6090620TP	SCREW				1
39	NS6680410SP	NUT 9/32-28				1
40	11302502	FEED ROCKER SHAFT CRANK				1
41	SS8681130SP	SCREW 9/32-28 L=11				2
42	22915151	FEED ARM COMPL.				1
43	SS7121610SP	SCREW 3/16-28 L=15.5		*		1
44	SD1000801SH	HINGE SCREW D=10 H=8				1
45	22915201	FEED DRIVING SHAFT				1
46	22904155	MAIN SHAFT THRUST COLLAR ASM.				1
47	SS8660610TP	SCREW 1/4-40 L=6		*		2



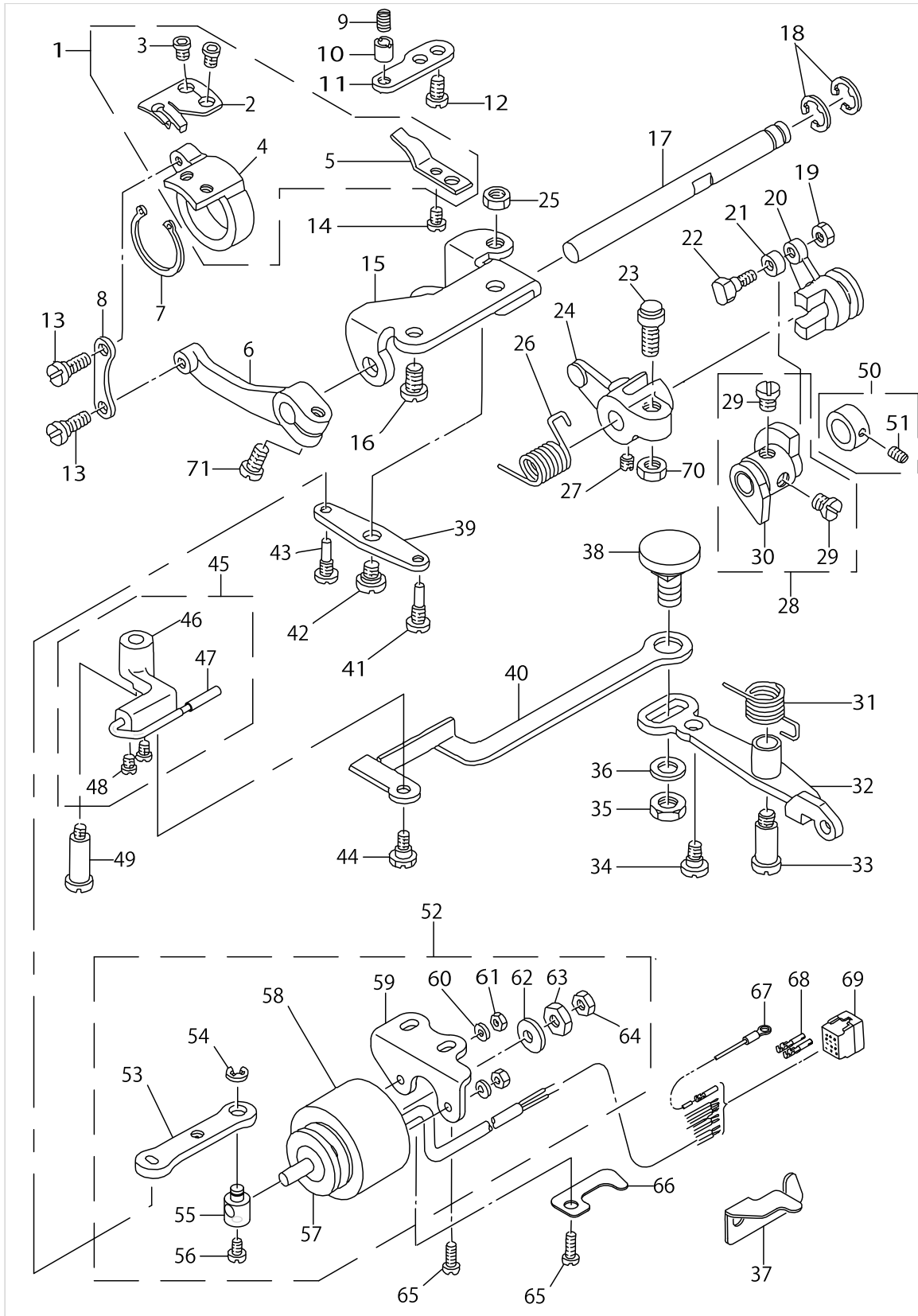
FEED MECHANISM COMPONENTS



FEED MECHANISM COMPONENTS

No.	Parts No.	Parts name	Remarks	Level	Cons	Qty
48	22913008	FEED ROCKER SHAFT BUSHING				2
49	40010395	ADJUSTING LINK FULCRUM SHAFT B	FOR DMN-5420N-7-0B,-WB			1
50	SS7110740TP	SCREW 11/64-40 L=7				1
51	RC0150001KP	RETAINING RING 13.8				1
52	22940654	FEED ROCKER ASM.				1
53	SS7121410TP	SCREW 3/16-28 L=14		*		1
54	WP0480856SP	WASHER 4.8X8.4X0.8		*		1
55	22915359	DRIVING SHAFT CRANK ASM.				1
56	SS7111120SP	SCREW 11/64-40 L=10.5		*		1
57	22904155	MAIN SHAFT THRUST COLLAR ASM.				1
58	SS8660610TP	SCREW 1/4-40 L=6		*		2
59	RO078190100	RUBBER RING				1
60	22967202	FEED REVERSE SHAFT				1
61	22912802	FEED LEVER SHAFT BUSHING				1
62	22912752	FEED LEVER ASM.				1
63	SM8061010TP	SCREW		*		1
64	SM8061050TP	SCREW		*		1
65	22971105	FEED REGULATOR ROD	FOR DMN-5420N-7-00			1
66	11314267	FEED ADJUST LINK ASM.	FOR DMN-5420N-7-0B,-WB			1
67	11302619	SPRING				1
68	WZ1250300K0	WAVED WASHER 12.5X17X0.3	FOR DMN-5420N-7-00			1
69	SS7620750SP	SCREW 3/16-32 L=6.5	FOR DMN-5420N-7-00			1
70	B1636581C00	NEEDLE BEARING	SELECTIVE PARTS			1
71	11311057	FEED REVERSE ARM ASM.	FOR DMN-5420N-7-0B,-WB			1
72	WP0702026SP	WASHER 7X15X2				1
73	11305000	SPRING	FOR DMN-5420N-7-00			1
74	SS6151220SP	SCREW 15/64-28 L=11.5				1
75	SS9661120CP	SCREW 1/4-40 L=10.5				1
76	SS6121860SP	SCREW 3/16-28 L=18				1

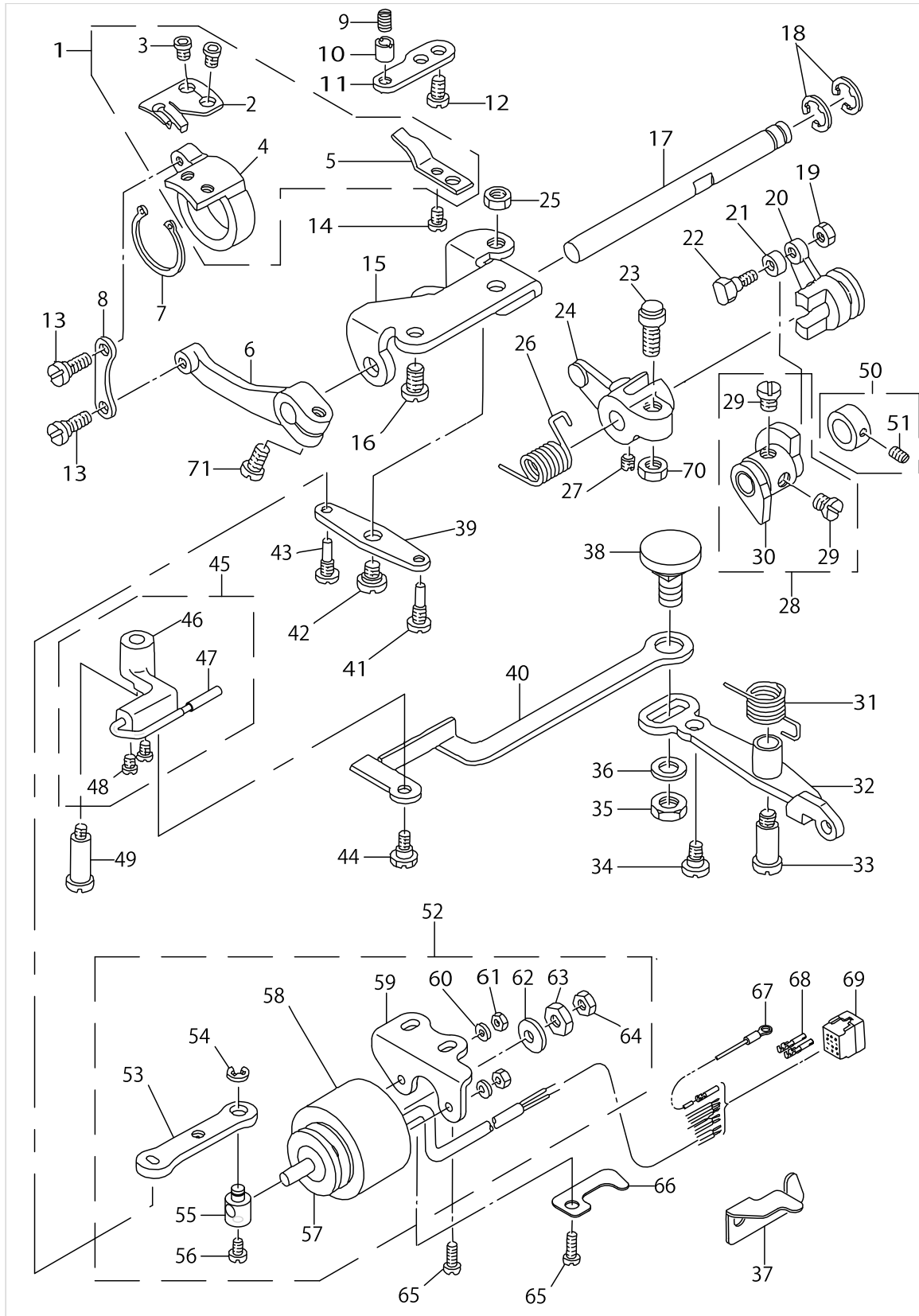
# THREAD TRIMMER MECHANISM COMPONENTS



THREAD TRIMMER MECHANISM COMPONENTS

No.	Parts No.	Parts name	Remarks	Level	Cons	Qty
1	40120641	MOVING KNIFE ASM.				1
2	11351400	MOVING KNIFE		*		1
3	11351806	SCREW		*		2
4	11351905	MOVING KNIFE BASE		*		1
5	11351509	COUNTER KNIFE		*		1
6	11352200	KNIFE DRIVING				1
7	RC2651218KP	RETAINING RING				1
8	11352101	MOVING KNIFE LINK				1
9	SS8110710SP	SCREW 11/64-40 L=6.5				1
10	11354602	COLLAR				1
11	11351608	KNIFE MOUNTING BASE				1
12	SS4110715SP	SCREW 11/64-40 L=7				2
13	SD0500251SP	HINGE SCREW D=5 H=2.5				2
14	SS1090510SP	SCREW 9/64-40 L=5				1
15	11352408	BASE PLATE				1
16	SS4150915SP	SCREW 15/64-28 L=9				2
17	11352309	KNIFE DRIVING SHAFT				1
18	RE0600000K0	E-RING 6				2
19	NS6110310SP	NUT 11/64-40				1
20	11352606	SLIDE ARM				1
21	11354404	DRIVING ROLLER				1
22	D2588L8WB00	ROLLER SHAFT				1
23	B14537710A0	STOP SCREW ASM.				1
24	11352507	KNIFE DRIVING ARM				1
25	NS6150310SP	NUT 15/64-28				1
26	11353406	SPRING				1
27	SS8660610TP	SCREW 1/4-40 L=6				2
28	11353653	THREAD TRIMMER CAM ASM.				1
29	SS6660610TP	SCREW 1/4-40 L=6		*		2
30	11353604	THREAD TRIMMER CAM		*		1
31	11353505	SPRING				1
32	11353059	CLUTCH LEVER ASM.				1
33	SD0701511TP	HING SCREW D=7 H=15.1				1
34	SD0600361SP	HINGE SCREW D=6 H=3.6				1
35	NS6150430SP	NUT 15/64-28				1
36	WP0621016SH	WASHER				1
37	22962708	REVERSE FEED CORD PRESSER	FOR DMN-5420N-7-0B,-WB			1
38	22950000	PICKER LINK PIN				1
39	11352903	CLUTCH PLATE				1
40	11354107	PICKER LINK				1
41	11352705	SCREW PIN A				1
42	SD0640261SP	HINGE SCREW D=3.65 H=2.6				1
43	11352804	SCREW PIN B				1
44	SD0630275SP	HINGE SCREW D=6.35 H=2.7				1
45	11354057	PICKER ARM ASM.				1
46	11354008	PICKER ARM		*		1
47	22950356	HOOK THREAD PRESSER ASM.		*		1

# THREAD TRIMMER MECHANISM COMPONENTS



THREAD TRIMMER MECHANISM COMPONENTS

No.	Parts No.	Parts name	Remarks	Level	Cons	Qty
48	SS6090510SP	SCREW 9/64-40 L=5		*		2
49	SD0641452TP	HINGE SCREW D=6.35 H=14.5				1
50	22950950	CAM COLLAR ASM.				1
51	SS8110520TP	SCREW 11/64-40 L=4.5		*		1
52	11355054	SOLENOID UNIT				1
53	11353307	CLUTCH LINK		*		1
54	RE0500000K0	E-RING		*		1
55	22951008	SOLENOID PIN		*		1
56	SS6110710TP	SCREW 11/64-40 L=6.5		*		1
57	11043205	SOLENOID RUBBER A		*		1
58	11043106	THREAD TRIMMER SOLENOID		*		1
59	22951404	SOLENOID BASE		*		1
60	WP0450000SD	WASHER 4.5X8X0.5		*		2
61	NM6040000SN	NUT M4		*		2
62	11043304	SOLENOID RUBBER		*		1
63	NS6660410SH	NUT		*		1
64	NS6660430SP	NUT 1/4-40		*		1
65	SS4151215SP	SCREW 15/64-28 L=12				2
66	22924807	PIPE HOLDER LOWER				1
67	22951552	GROUND WIRE ASM.				1
68	HK03464000B	PIN CONTACT	FOR DMN-5420N-7-00			2
69	HK034610140	HOUSING 14P				1
70	NS6150430SP	NUT 15/64-28				1
71	SS6121220TP	SCREW 3/16-28 L=11.5				1

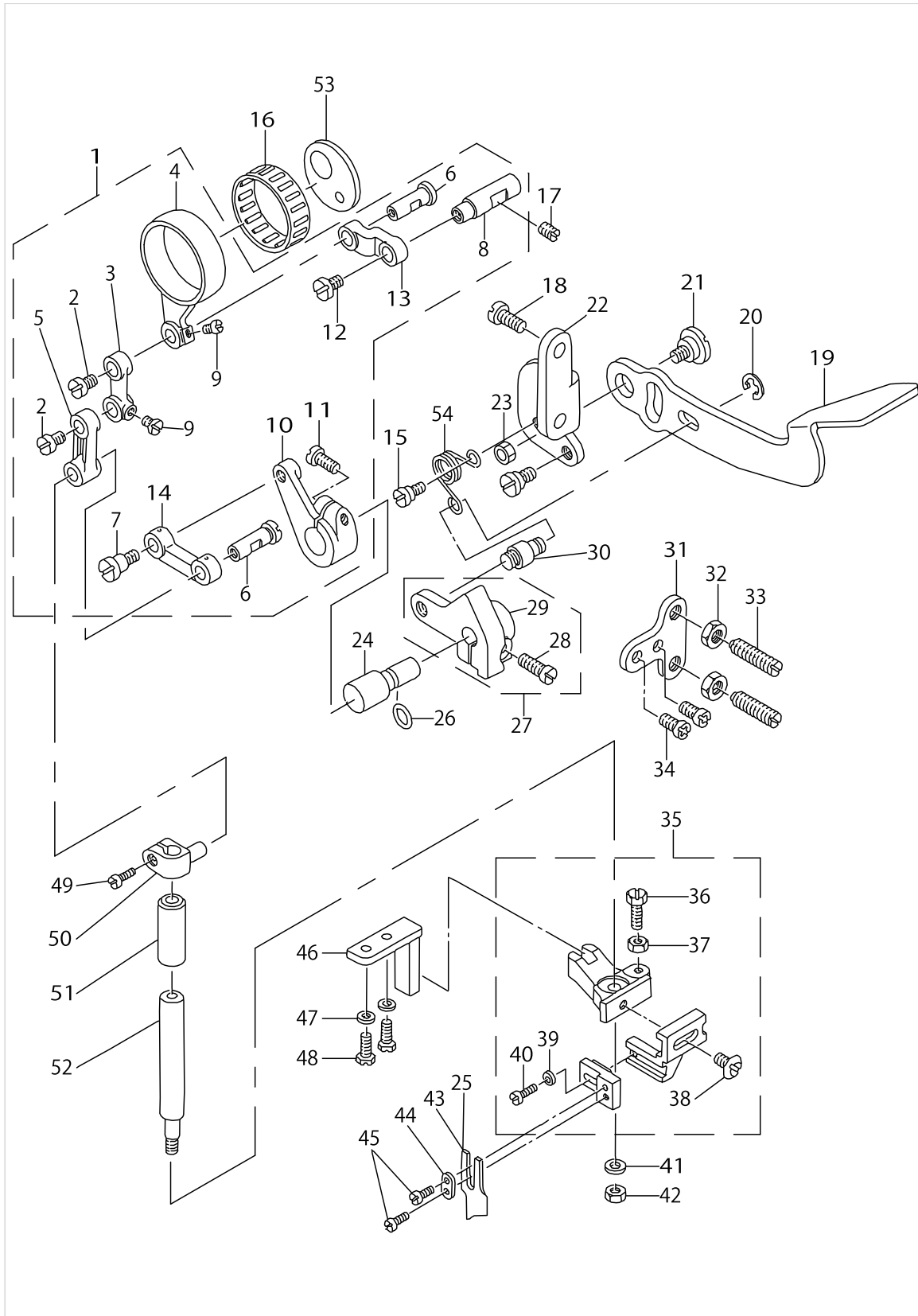


KNIFE COMPONENTS

No.	Parts No.	Parts name	Remarks	Level	Cons	Qty
1	11356953	KNIFE ROD ASM.				1
2	SS7110830SP	SCREW 11/64-40 L=7.5		*		2
3	11357308	KNIFE DRIVING ROD A		*		1
4	11356904	KNIFE DRIVING ROD		*		1
5	11357407	KNIFE DRIVING ROD B		*		1
6	11357209	PIN		*		2
7	SD0640604TP	HING SCREW D=6.35 H=6		*		1
8	11357001	ROD LINK SHAFT		*		1
9	SS7090520TP	SCREW 9/64-40 L=4.5		*		2
10	11357704	LINK SUPPORT ARM		*		1
11	SS6121220TP	SCREW 3/16-28 L=11.5		*		1
12	SS7110830SP	SCREW 11/64-40 L=7.5		*		1
13	11357100	KNIFE DRIVING ROD LINK		*		1
14	11357506	KNIFE DRIVING LINK		*		1
15	SD0790431SP	HINGE SCREW D=7.94 H=4.3				1
16	B412352200A	NEEDLE BEARING	SELECTIVE PARTS(A~C)			1
17	SS8151150TP	SCREW 15/64-28 L=10.5				1
18	SS4150915SP	SCREW 15/64-28 L=9				2
19	11358207	KNIFE LEVER				1
20	RE0500000K0	E-RING				1
21	SD0920321SP	HINGE SCREW D=9.20 H=3.2				1
22	11358108	KNIFE LEVER BASE				1
23	NS6160520SP	NUT 1/4-24				1
24	11357803	KNIFE SET LEVER SHAFT				1
25	B4121522000	KNIFE	FOR USE IN JAPAN			1
26	RO048190100	RUBBER RING				1
27	11357951	KNIFE SHIFTING BASE ASM.				1
28	SS6121220TP	SCREW 3/16-28 L=11.5		*		1
29	11357902	KNIFE SET LEVER BASE		*		1
30	B4124530000	SET LEVER PIN				1
31	11358306	KNIFE LEVER STOPPER				1
32	NS6150310SP	NUT 15/64-28				2
33	SS8152080SP	SCREW 15/64-28 L=19.5				2
34	SS4120915SP	SCREW 3/16-28 L=9				2
35	B41175300A0	KNIFE MOUNTING BASE ASM.				1
36	SS9121410TP	SCREW 3/16-28 L=14		*		1
37	NS6120310SP	NUT 3/16-28		*		1
38	SS6110810TP	SCREW 11/64-40 L=8		*		1
39	WP0371026SD	WASHER 3.7X7X1		*		1
40	SS6090910SP	SCREW 9/64-40 L=9		*		1
41	WP0501016SD	WASHER 5X10.5X1				1
42	NS6120480SP	NUT 3/16-28				1
43	B4145530B0A	KNIFE				1
44	B4122522000	WASHER				1
45	SS4080515SP	SCREW 1/8-44 L=5				2
46	B4120530000	KNIFE MOUNTING BASE GUIDE				1
47	WP0480856SP	WASHER 4.8X8.4X0.8				2



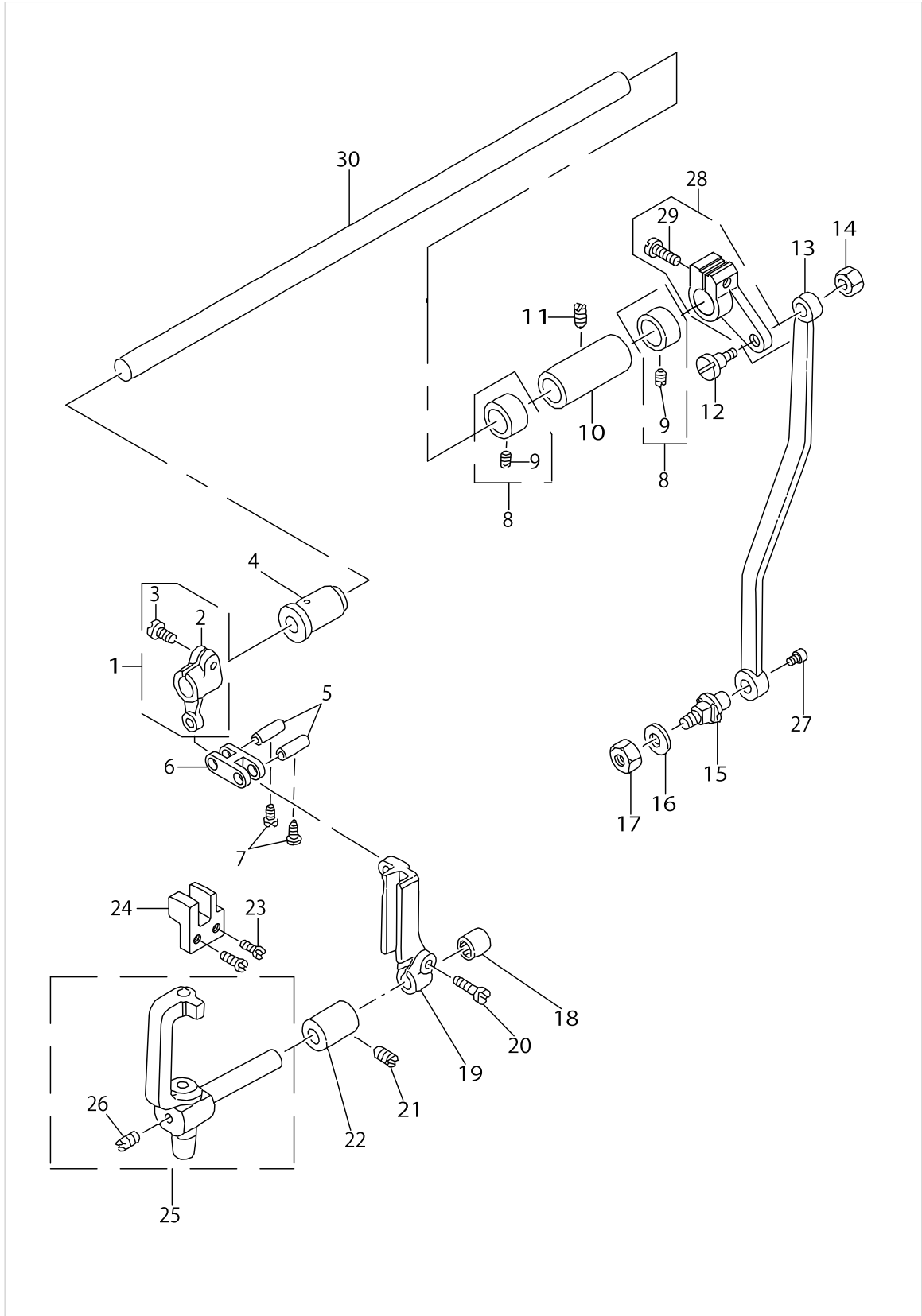
# KNIFE COMPONENTS



KNIFE COMPONENTS

No.	Parts No.	Parts name	Remarks	Level	Cons	Qty
48	SS9121010TP	SCREW				2
49	SS6090810TP	SCREW 9/64-40 L=7.5				1
50	B4115530000	KNIFE DRIVING STUD CONNECTION				1
51	B4116530000	BUSHING				1
52	B4114530000	KNIFE DRIVING STUD				1
53	11371705	THRUST PLATE				1
54	B4126530000	SPRING				1

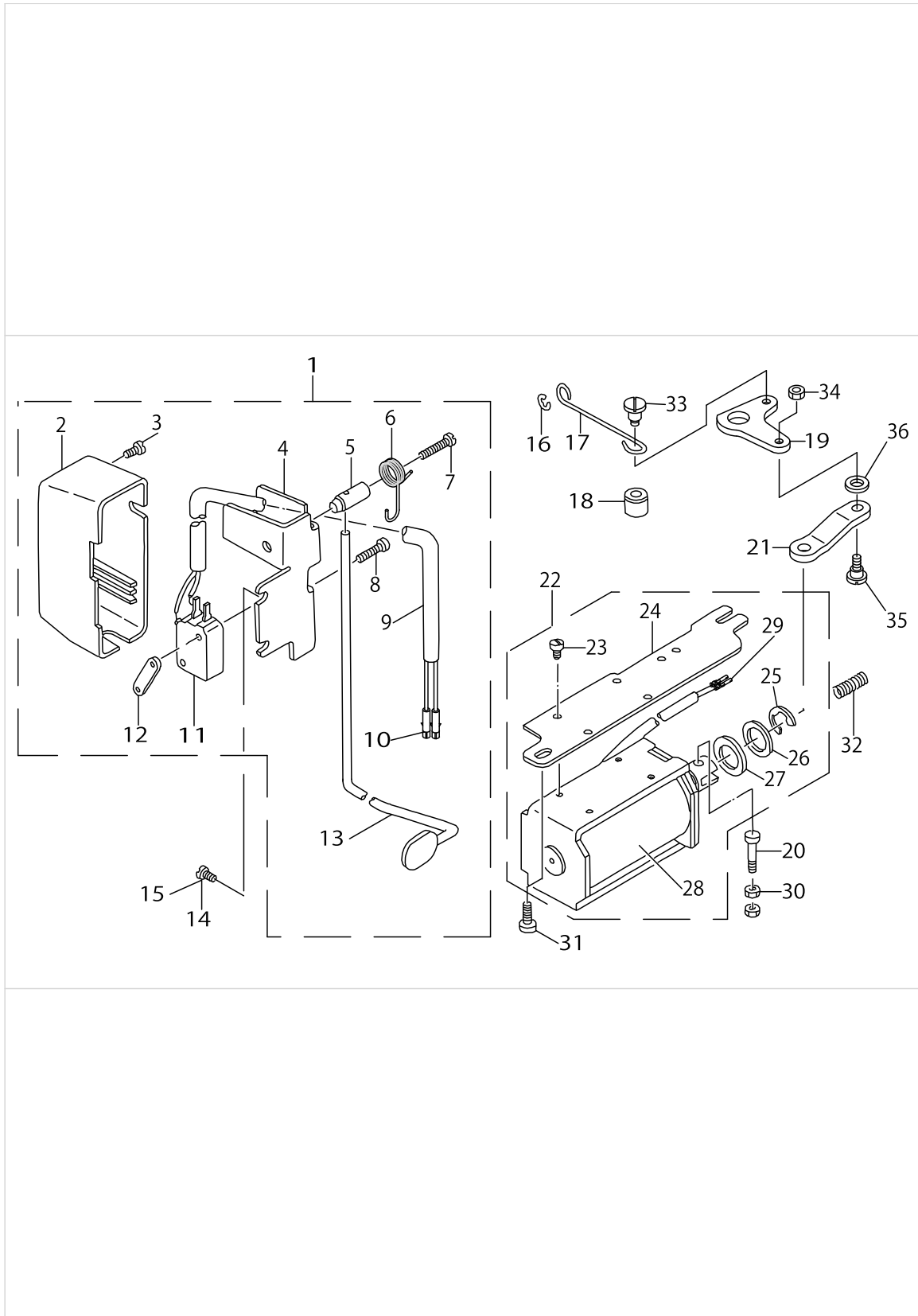
# NEEDLE BAR FRAME COMPONENTS



NEEDLE BAR FRAME COMPONENTS

No.	Parts No.	Parts name	Remarks	Level	Cons	Qty
1	11304052	SHAFT ARM ASM. (FRONT)				1
2	11304003	DRIVING CRANK FRONT		*		1
3	SS6121220TP	SCREW 3/16-28 L=11.5		*		1
4	11211000	ROCK SHAFT BUSHING FRONT				1
5	B1412352B00	NEEDLE BAR LINK PIN	SELECTIVE PARTS			2
6	B2906415000	DRIVING LINK				1
7	SS6090660TP	SCREW 9/64-40 L=6				2
8	CS120101BSH	THRUST COLLAR ASM.				2
9	SS8660410SP	SCREW 1/4-40 L=4.2		*		4
10	11210903	ROCK SHAFT BUSHING REAR				1
11	SS8120740SP	SCREW 3/16-28 L=7				1
12	SD0790501SP	HINGE SCREW D=7.94 H=5				1
13	11304201	CONNECTING ROD				1
14	NS6150310SP	NUT 15/64-28				1
15	11304300	CONNECTING ROD SHAFT				1
16	WP0621016SD	WASHER 6.2X13X1				1
17	NS6150430SP	NUT 15/64-28				1
18	SB309000400	BEARING				1
19	11303807	SLIDE BLOCK GUIDE				1
20	SS6121610SP	SCREW 3/16-28 L=15.5				1
21	SS8120740SP	SCREW 3/16-28 L=7				1
22	11214509	BUSHING				1
23	SS6090810SP	SCREW 9/64-40 L=7.5				2
24	11303906	NEEDLE BAR FRAME GUIDE				1
25	11303567	NEEDLE ROD ROCKING BASE ASM.				1
26	SS8110310SP	SCREW 11/64-40 L=2.8		*		1
27	SS6110640SP	SCREW 11/64-40 L=6				1
28	11304151	SHAFT ARM ASM. (REAR)				1
29	SS7121410SP	SCREW 3/16-28 L=14		*		1
30	11304409	CONNECTING SHAFT				1

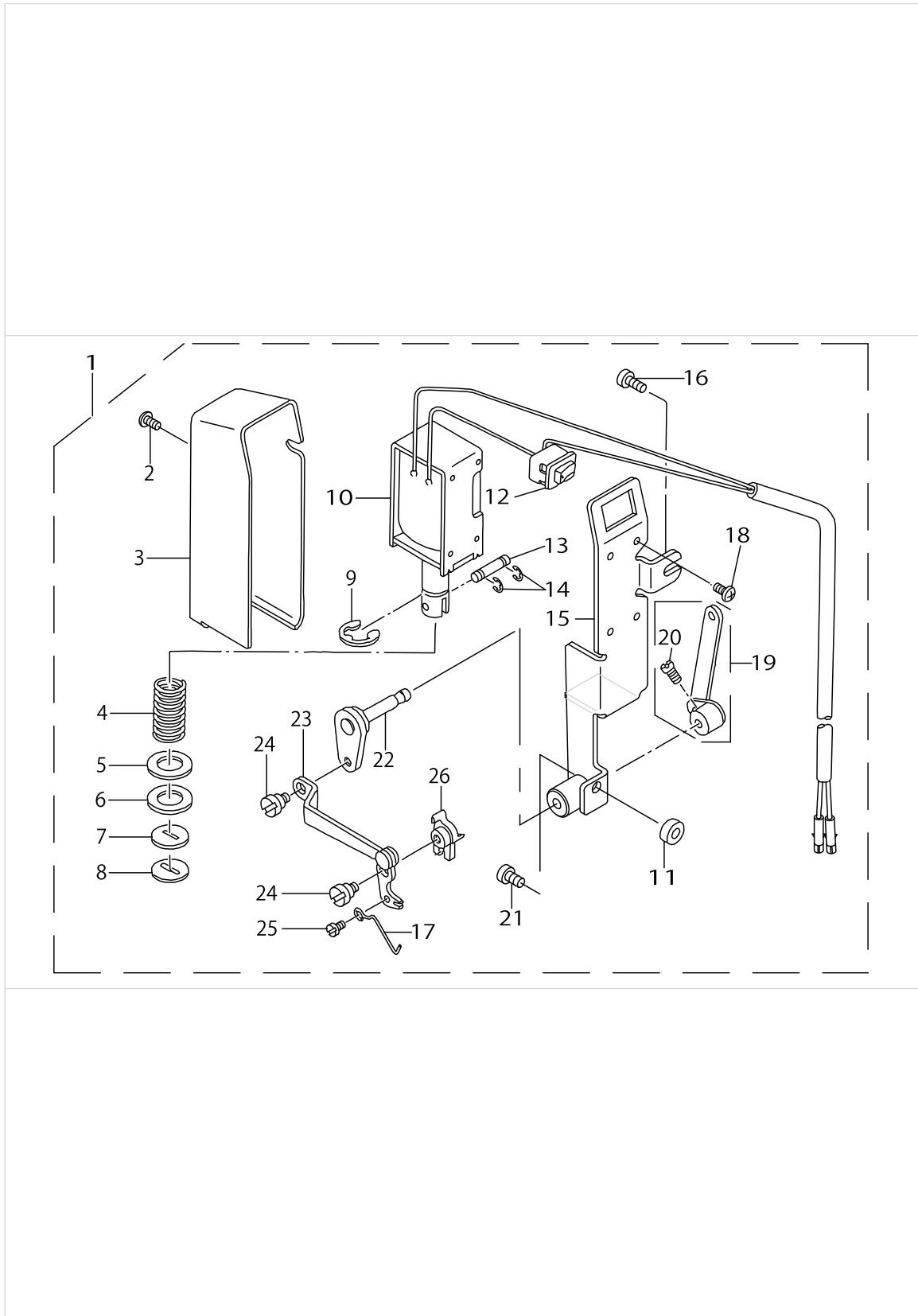
AUTOMATIC REVERSE FEED COMPONENTS



AUTOMATIC REVERSE FEED COMPONENTS

No.	Parts No.	Parts name	Remarks	Level	Cons	Qty
1	11362357	REVERSE FEED SWITCH ASM.				1
2	22954606	REVERSE FEED SWITCH COVER		*		1
3	SM4040655SP	SCREW M4 L=6		*		1
4	22954101	REVERSE FEED SWITCH BASE		*		1
5	22954200	REVERSE FEED SWITCH SHAFT		*		1
6	22954309	REVERSE FEED SWITCH SPRING		*		1
7	SM4041655SP	SCREW M4 L=16		*		1
8	SM4031501SC	SCREW M3 L=15		*		2
9	HW500070000	2-CORE CABTYRE CORD		*		1.31
10	HK03464000B	PIN CONTACT		*		2
11	HA001900000	MICROSWITCH		*		1
12	11102308	MICRO SWITCH PLATE		*		1
13	11364700	REVERSE FEED SWITCH LEVER		*		1
14	SS4120615SP	SCREW 3/16-28 L=6	FOR DMN-5420N-7-0B			1
15	SS4120915SP	SCREW 3/16-28 L=9				1
16	RE0500000KP	E-RING 5				1
17	11101300	REVERSE FEED CONNECTING SHAFT				1
18	22962609	REVERSE FEED BASE COLLAR				1
19	11101508	REVERSE FEED LINK				1
20	22962906	PLUNGER ARM PIN				2
21	11101607	SOLENOID CONNECTING LINK				1
22	11372356	SOLENOID INSTALLING PLATE				1
23	SS7110740TP	SCREW 11/64-40 L=7		*		4
24	11372109	SOLENOID INSTALLING PLATE		*		1
25	RE1200000K0	E-RING 12		*		1
26	WP1703001SC	WASHER 17X30X3		*		1
27	D2468555B00	RUBBER PLUNGER		*		1
28	11228400	REVERSE FEED SOLENOID		*		1
29	HK03464000B	PIN CONTACT		*		2
30	NS6110420SP	NUT 11/64-40				2
31	SS4151215SP	SCREW 15/64-28 L=12				1
32	11217601	WALKING FOOT SPRING				1
33	SD0700451TP	HINGE SCREW D=7 H=4.5				1
34	NS6110420SP	NUT 11/64-40				1
35	SD0700711TP	HINGE SCREW D=7 H=7.1				1
36	WP0722316SH	WASHER				1

# WIPER COMPONENTS

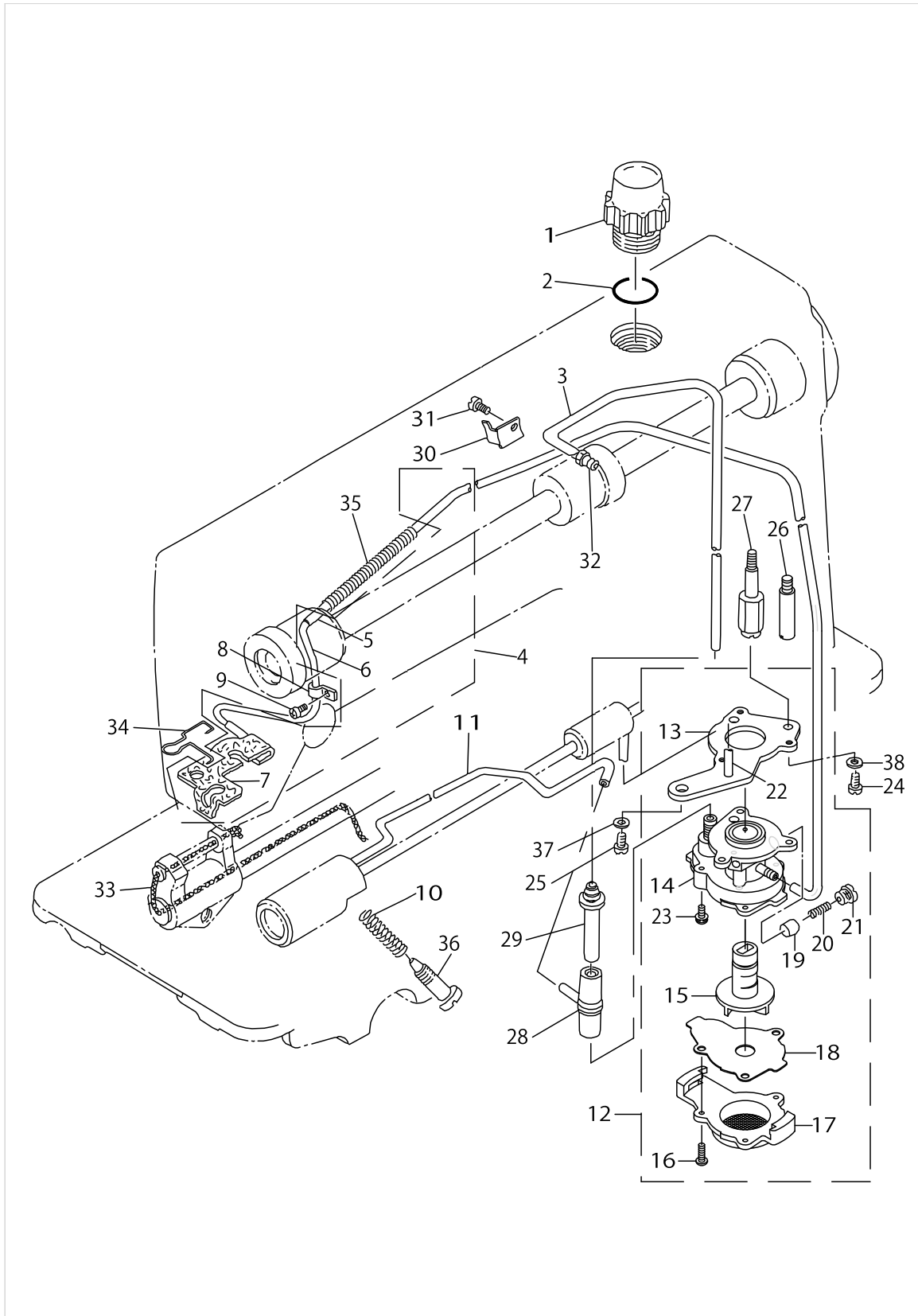


WIPER COMPONENTS

No.	Parts No.	Parts name	Remarks	Level	Cons	Qty
1	11362456	WIPER ASM.				1
2	SL4030631SC	SCREW M3X6		*		1
3	11258001	WIPER COVER		*		1
4	11233400	SPRING		*		1
5	WP1221016SP	WASHER		*		1
6	11234408	SOLENOID RUBBER		*		1
7	11233301	STOPPER RUBBER		*		1
8	11234606	STOPPER RUBBER WASHER		*		1
9	RE0900000K0	E-RING 9		*		1
10	40112705	WIPER SOLENOID ASM.		*		1
11	13522206	COLLAR		*		1
12	HA00600000A	SWITCH		*		1
13	11234507	PLUNGER CONNECTING PIN		*		1
14	RE0300000K0	E-RING 3		*		2
15	11233053	WIPER INSTALLING BASE ASM.		*		1
16	SS4120915SP	SCREW 3/16-28 L=9		*		1
17	11359700	WIPER		*		1
18	SL4030641SE	SCREW		*		4
19	11233251	WIPER LEVER B ASM.		*		1
20	SS6110710TP	SCREW 11/64-40 L=6.5		*		2
21	SS4121415SP	SCREW 3/16-28 L=14		*		1
22	11360153	WIPER LEVER ASM. A		*		1
23	11359957	WIPER ARM ASM.		*		1
24	SD0550212TP	HINGE SCREW D=5.5 H=2.1		*		2
25	SS7090410SP	SCREW 9/64-40 L=3.5		*		1
26	11359809	WIPER BASE		*		1



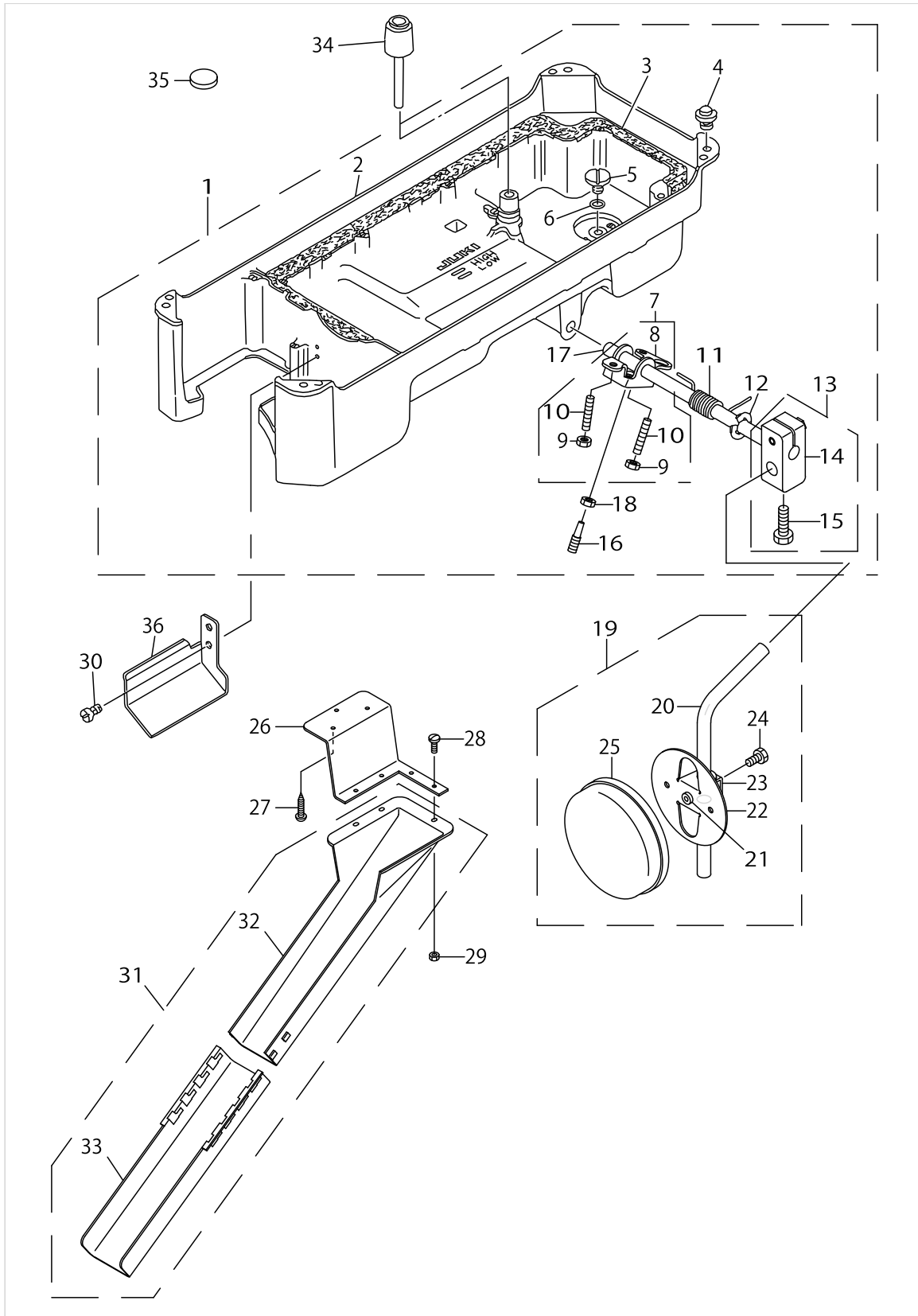
OIL LUBRICATION COMPONENTS



OIL LUBRICATION COMPONENTS

No.	Parts No.	Parts name	Remarks	Level	Cons	Qty
1	22947006	OIL SIGHT WINDOW				1
2	RO195240100	RUBBER RING				1
3	BT0600402EA	OIL TUBE				0.27
4	11371259	OIL RETURN TUBE ASM.				1
5	BT0500300EA	OIL TUBE		*		0.54
6	11371200	OIL RETURN TUBE		*		1
7	11371358	OIL FELT ASM.		*		1
8	B3538112000	OIL RETURN TUBE HOLDER				1
9	SS4120615SP	SCREW 3/16-28 L=6				1
10	22924906	OIL REGULATOR SCREW SPRING				1
11	11307352	OIL WICK ASM.				1
12	22923056	OIL PUMP ASM.				1
13	22923312	OIL PUMP INSTALLING BASE		*		1
14	22923015	OIL PUMP		*		1
15	22923700	IMPELLER		*		1
16	SE4301041SR	SCREW D=3 L=10		*		3
17	22923205	PUMP BODY COVER		*		1
18	22923809	PUMP BODY SUPPORT PLATE		*		1
19	22923403	PLUNGER		*		1
20	22923601	PLUNGER SPRING		*		1
21	22923502	PLUNGER SCREW		*		1
22	22923908	HOOK DRIVING SHAFT OILING PIPE		*		1
23	SL4030851SF	SCREW M3 L=8		*		3
24	SS6111010TP	SCREW 11/64-40 L=9.5				1
25	SS4150915SP	SCREW 15/64-28 L=9				1
26	22924005	PUMP BODY STRUT	FOR DMN-5420N-7-00			1
27	11231503	OIL PUMP SUPPORT	FOR DMN-5420N-7-0B,-WB			1
28	22924609	RUBBER JOINT				1
29	11221504	OIL TUBE JOINT				1
30	11222007	HOLDER				1
31	SS6080340SP	SCREW 1/8-44 L=2.9				1
32	SQ1150501SD	CONNECTING SCREW				1
33	CQ252000000	OIL WICK				0.3
34	11356201	OIL FELT PRESSER				1
35	B3404122000	SPRING				1
36	22925002	OIL REGULATOR SCREW				1
37	WS0651310KP	SPRING WASHER 6.5X11X1.3	FOR DMN-5420N-7-0B,-WB			1
38	WS0451040KP	SPRING WASHER 4.5X8.5X1	FOR DMN-5420N-7-0B,-WB			1

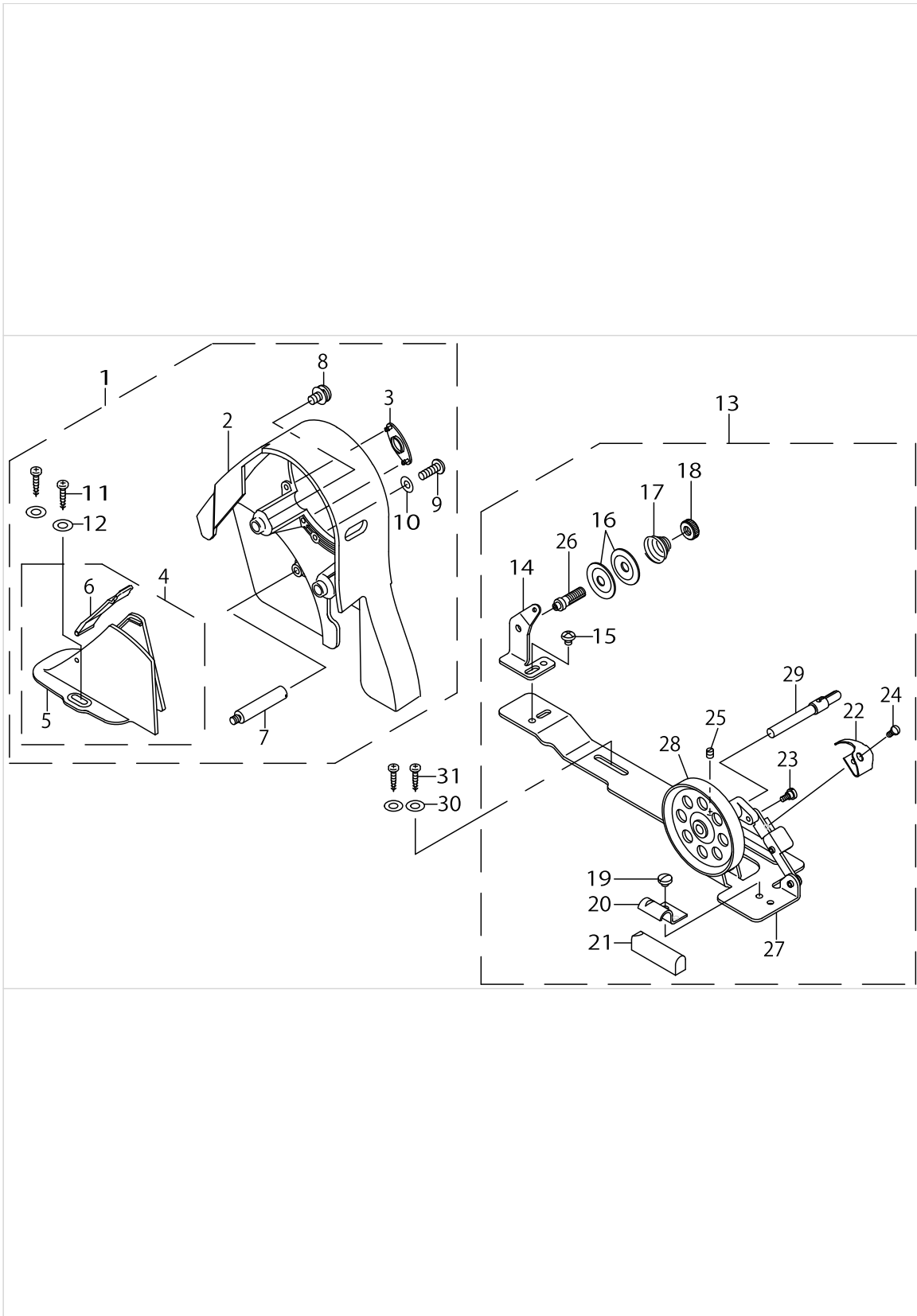
OIL RESERVOIR COMPONENTS



OIL RESERVOIR COMPONENTS

No.	Parts No.	Parts name	Remarks	Level	Cons	Qty
1	11360757	OIL RESERVOIR ASM.				1
2	11360708	OIL RESERVOIR		*		1
3	11023108	GASKET		*		1
4	11047107	RUBBER CUSHION		*		4
5	SS6700710SH	SCREW 5/16-24 L=7		*		1
6	RO098240100	RUBBER RING		*		1
7	22932156	KNEE LIFTER ROTATION ARM ASM.		*		1
8	22932107	KNEE LIFTER ROTATION ARM		*		1
9	NM6060001SE	NUT M6		*		2
10	SM8063012TR	SCREW M6 L=30		*		2
11	22932206	SPRING		*		1
12	RE1000000K0	E-RING 10		*		1
13	22932453	BRACKET ASM.		*		1
14	22932404	BRACKET		*		1
15	22934707	BRACKET SCREW		*		2
16	40101720	SCREW_M6		*		1
17	22932305	KNEE PRESS CROSS SHAFT		*		1
18	NM6060001SE	NUT M6		*		1
19	22934251	KNEE PAD PLATE ASM.				1
20	22934608	KNEE PAD UPRIGHT SHAFT		*		1
21	22934400	KNEE PAD PLATE RUBBER		*		1
22	22934202	KNEE PAD PLATE		*		1
23	22934301	KNEE PAD PLATE SUPPORT		*		1
24	SM9061203SE	SCREW M6 L=12		*		1
25	22934509	KNEE PAD PLATE COVER		*		1
26	40064815	WASTE MATERIAL CHUTE HOLDER				1
27	SK3412000SC	WOOD SCREW D=4.1 L=20				3
28	SS7091110TP	SCREW 9/64-40 L=10.5				3
29	NS6090310SP	NUT 9/64-40				3
30	SS4110715SP	SCREW 11/64-40 L=7				2
31	40056521	WASTE MATERIAL CHUTE HOLDER ASM.				1
32	40053719	CLOTH WASTE CHUTE UPPER		*		1
33	12341806	CLOTH WASTE CHUTE		*		1
34	22931703	KNEE LIFTER PUSH ROD				1
35	B8228125000	OIL RESERVOIR MAGNET				1
36	11361003	OIL PUSH GUIDE				1

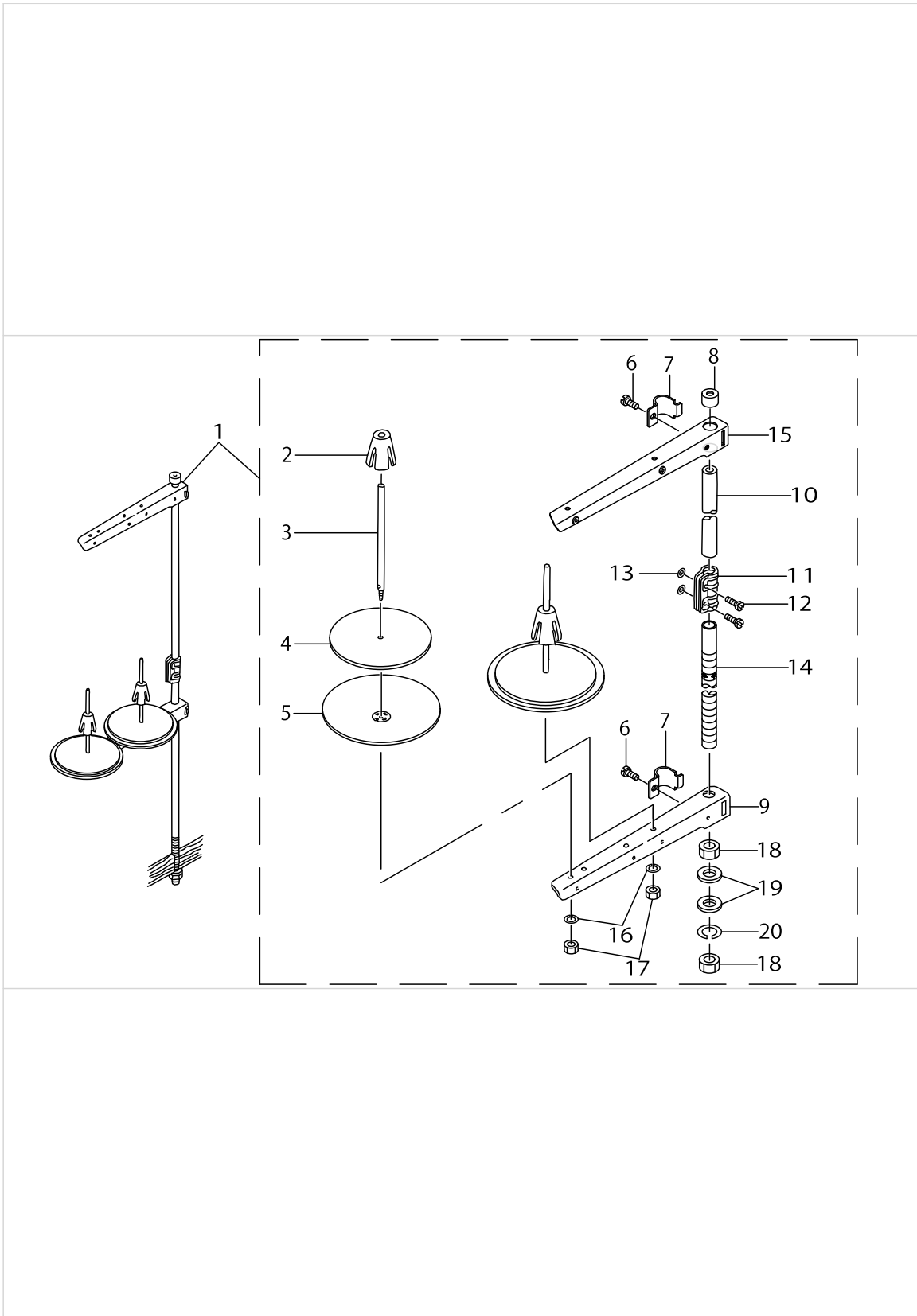
# BELT COVER & BOBBIN WINDER COMPONENTS



BELT COVER & BOBBIN WINDER COMPONENTS

No.	Parts No.	Parts name	Remarks	Level	Cons	Qty
1	22933451	BELT COVER ASM.				1
2	22933402	BELT COVER A		*		1
3	22933501	BELT COVER A CAP		*		1
4	22933659	BELT COVER B COMPL.		*		1
5	22933600	BELT COVER B		*		1
6	22933758	BELT COVER B LID ASM.		*		1
7	22933907	BELT COVER STRUT		*		1
8	22934004	SET SCREW		*		2
9	SS4121415SP	SCREW 3/16-28 L=14		*		1
10	WP0501016SD	WASHER 5X10.5X1		*		1
11	SK3412000SC	WOOD SCREW D=4.1 L=20		*		2
12	WP0450826SC	WASHER 4.5X10X0.8		*		2
13	22927354	BOBBIN WINDER COMPL.				1
14	22928501	THREAD TENSION POST BASE		*		1
15	SS4110515SP	SCREW 11/64-40 L=5		*		1
16	22928907	THREAD TENSION DISK		*		2
17	22929004	THREAD TENSION SPRING		*		1
18	22928808	NUT		*		1
19	SS7110350SP	SCREW 11/64-40 L=3.5		*		1
20	22928402	CONTROL RUBBER HOLDING PLATE		*		1
21	22928303	CONTROL RUBBER		*		1
22	22928105	BOBBIN PRESSER		*		1
23	SD0490261SP	HINGE SCREW D=4.9 H=2.6		*		1
24	SS7081310SP	SCREW 1/8-44 L=12.5		*		1
25	SS8110510SP	SCREW 11/64-40 L=5		*		1
26	22928709	THREAD TENSION POST		*		1
27	22927305	BOBBIN WINDER BASE		*		1
28	22927404	BOBBIN WINDER		*		1
29	22927602	BOBBIN WINDER SPINDLE		*		1
30	WP0450826SC	WASHER 4.5X10X0.8				2
31	SK3412000SC	WOOD SCREW D=4.1 L=20				2

# THREAD STAND COMPONENTS








THREAD STAND COMPONENTS

No.	Parts No.	Parts name	Remarks	Level	Cons	Qty
1	22930358	THREAD STAND ASM.				1
2	22931109	SPOOL RETAINER		*		2
3	22931000	SPOOL PIN		*		2
4	22930903	SPOOL REST CUSHION		*		2
5	22930804	SPOOL REST		*		2
6	SM6061610SC	SCREW M6 L=16		*		2
7	22930705	THREAD GUIDE ARM JOINT		*		2
8	22931406	SPOOL REST ROD RUBBER CAP		*		1
9	22930507	SPOOL REST ARM		*		1
10	22930408	SPOOL REST ROD UPPER		*		1
11	22931307	SPOOL REST ROD JOINT		*		1
12	SM4051405SE	SCREW M5 L=14		*		2
13	NM6050001SE	NUT M5		*		2
14	22930309	SPOOL REST ROD LOWER		*		1
15	22930556	THREAD STANDING ARM ASM.		*		1
16	WS0510002KN	SPRING WASHER		*		2
17	NM6050001SE	NUT M5		*		2
18	NM6160511SE	NUT M16X1.5		*		2
19	WP1612616SE	WASHER 16.1X30X2.6		*		2
20	WS1643202KR	SPRING WASHER		*		1



TABLE OF EXCHANGING GAUGE PARTS (1)

Specifications of the sub-gauge	Gauge width	1		2		3		4		5		Type	Note
		Throat plate 針板		Throat plate cover (asm) accessory 針板蓋(組) *付属品		Gauge ゲージ		Throat plate chip guard 針板布屑カバー		Throat plate chip guard accessory 針板布屑ガイド *付属品			
サブゲージ仕様	サブゲージ巾											仕様	備考
		Ref.no	Part no	Ref.no	Part no	Ref.no	Part no	Ref.no	Part no	Ref.no	Part no		
CA□	5/64" (2.0mm)	1	11346004	14	B11155310AD	27	B1190530C0A	40	11346905	53	11347002	Spare parts type 補用パーツ仕様	Operate your sewing machine with the stitch length set to 2mm or less.(Cut-after type) 送りピッチ2mm以下(後メスタイプ)
D□	1/8" (3.2mm)	2	11346004	15	B11155300AD	28	B1190530D00	41	11346905	54	11347002	Standard type 標準仕様	
DA□	7/64" (2.8mm)	3	11346004	16	B11155300AD	29	B1190530D0A	42	11346905	55	11347002	Spare parts type 補用パーツ仕様	
DC□	1/8" (3.2mm)	4	11346004	17	B11155300AD	30	B1190530D0C	43	11346905	56	11347002	Spare parts type 補用パーツ仕様	Gauge of chain-off thread 空罫用ゲージ
DD□	1/8" (3.2mm)	5	11346004	18	B11155300AD	31	B1190530D0B	44	11346905	57	11347002	Spare parts type 補用パーツ仕様	B11100120AA(B111001200A) Exclusive slide plate 送り板
E□	5/32" (4.0mm)	6	11346004	19	B11155300AF	32	B1190530E00	45	11346905	58	11347002	Special type 特別仕様	
F□	3/16" (4.8mm)	7	11346004	20	B11155300AF	33	B1190530F00	46	11346905	59	11347002	Special type 特別仕様	
G□	7/32" (5.6mm)	8	11346004	21	B11155300AF	34	B1190530G00	47	11347101	60	11347200	Special type 特別仕様	
H□	1/4" (6.4mm)	9	11346103	22	B11155300AF	35	B1190530H00	48	11347101	61	11347200	Special type 特別仕様	
J□	9/32" (7.1mm)	10	11346103	23	B11155300AF	36	B1190530J00	49	11347101	62	11347200	Spare parts type 補用パーツ仕様	
JA□	19/64" (7.5mm)	11	11346103	24	B11155300AF	37	B1190530J0A	50	11347101	63	11347200	Spare parts type 補用パーツ仕様	
K□	5/16" (8.0mm)	12	11346103	25	B11155300AF	38	B1190530K00	51	11347309	64	11347408	Spare parts type 補用パーツ仕様	
M□	3/8" (9.5mm)	13	11346103	26	B11155300AM	39	B1190530M00	52	11347309	65	11347408	Special type 特別仕様	

[Note] 1.Enter A(standard feed type) or B(coarse feed type) in the box(□) shown in the column for sub-gauge type.      [注記] 1.サブゲージ仕様名の欄の□内は A→標準送りタイプ B→粗目送りタイプ

TABLE OF EXCHANGING GAUGE PARTS (1)

No.	Parts No.	Parts name	Remarks	Level	Cons	Qty
1	11346004	NEEDLE PLATE A				1
2	11346004	NEEDLE PLATE A				1
3	11346004	NEEDLE PLATE A				1
4	11346004	NEEDLE PLATE A				1
5	11346004	NEEDLE PLATE A				1
6	11346004	NEEDLE PLATE A				1
7	11346004	NEEDLE PLATE A				1
8	11346004	NEEDLE PLATE A				1
9	11346103	THROAT PLATE				1
10	11346103	THROAT PLATE				1
11	11346103	THROAT PLATE				1
12	11346103	THROAT PLATE				1
13	11346103	THROAT PLATE				1
14	B11155300AD	THROAT PLATE COVER				1
15	B11155300AD	THROAT PLATE COVER				1
16	B11155300AD	THROAT PLATE COVER				1
17	B11155300AD	THROAT PLATE COVER				1
18	B11155300AD	THROAT PLATE COVER				1
19	B11155300AF	THROAT PLATE OPEN COVER				1
20	B11155300AF	THROAT PLATE OPEN COVER				1
21	B11155300AF	THROAT PLATE OPEN COVER				1
22	B11155300AF	THROAT PLATE OPEN COVER				1
23	B11155300AF	THROAT PLATE OPEN COVER				1
24	B11155300AF	THROAT PLATE OPEN COVER				1
25	B11155300AF	THROAT PLATE OPEN COVER				1
26	B11155300AM	THROAT PLATE PLUG ASM. M				1
27	B1190530C0A	GAUGE PLATE CA				1
28	B1190530D00	GAUGE DD				1
29	B1190530D0A	GAUGE 7/64				1
30	B1190530D0C	GAUGE 1/8 DC				1
31	B1190530D0B	GAUGE 1/8 DB				1
32	B1190530E00	GAUGE PLATE 5/32 E				1
33	B1190530F00	GAUGE PLATE 3/16 F				1
34	B1190530G00	GAUGE PLATE 7/32 G				1
35	B1190530H00	GAUGE PLATE 1/4 H				1
36	B1190530J00	GAUGE PLATE 9/32				1
37	B1190530J0A	GAUGE PLATE 19/64				1
38	B1190530K00	THROAT PLATE 5/16				1
39	B1190530M00	THROAT PLATE 3/8				1
40	11346905	WASTE MATERIAL GUARD E				1
41	11346905	WASTE MATERIAL GUARD E				1
42	11346905	WASTE MATERIAL GUARD E				1
43	11346905	WASTE MATERIAL GUARD E				1
44	11346905	WASTE MATERIAL GUARD E				1
45	11346905	WASTE MATERIAL GUARD E				1
46	11346905	WASTE MATERIAL GUARD E				1
47	11347101	WASTE MATERIAL GUARD G				1

TABLE OF EXCHANGING GAUGE PARTS (1)

Specifications of the sub-gauge	Gauge width	1		2		3		4		5		Type	Note
		Throat plate 針板		Throat plate cover (asm) accessory 針板蓋(組) *付属品		Gauge ゲージ		Throat plate chip guard 針板布屑カバー		Throat plate chip guard accessory 針板布屑ガイド *付属品			
サブゲージ仕様	サブゲージ巾	Ref.no Part no		Ref.no Part no		Ref.no Part no		Ref.no Part no		Ref.no Part no		仕様	備考
		CA□	5/64" (2.0mm)	1	11346004	14	B11155310AD	27	B1190530C0A	40	11346905		
D□	1/8" (3.2mm)	2	11346004	15	B11155300AD	28	B1190530D00	41	11346905	54	11347002	Standard type 標準仕様	
DA□	7/64" (2.8mm)	3	11346004	16	B11155300AD	29	B1190530D0A	42	11346905	55	11347002	Spare parts type 補用パーツ仕様	
DC□	1/8" (3.2mm)	4	11346004	17	B11155300AD	30	B1190530D0C	43	11346905	56	11347002	Spare parts type 補用パーツ仕様	Gauge of chain-off thread 空罫用ゲージ
DD□	1/8" (3.2mm)	5	11346004	18	B11155300AD	31	B1190530D0B	44	11346905	57	11347002	Spare parts type 補用パーツ仕様	B11100120AA(B111001200A) Exclusive slide plate 送り板
E□	5/32" (4.0mm)	6	11346004	19	B11155300AF	32	B1190530E00	45	11346905	58	11347002	Special type 特別仕様	
F□	3/16" (4.8mm)	7	11346004	20	B11155300AF	33	B1190530F00	46	11346905	59	11347002	Special type 特別仕様	
G□	7/32" (5.6mm)	8	11346004	21	B11155300AF	34	B1190530G00	47	11347101	60	11347200	Special type 特別仕様	
H□	1/4" (6.4mm)	9	11346103	22	B11155300AF	35	B1190530H00	48	11347101	61	11347200	Special type 特別仕様	
J□	9/32" (7.1mm)	10	11346103	23	B11155300AF	36	B1190530J00	49	11347101	62	11347200	Spare parts type 補用パーツ仕様	
JA□	19/64" (7.5mm)	11	11346103	24	B11155300AF	37	B1190530J0A	50	11347101	63	11347200	Spare parts type 補用パーツ仕様	
K□	5/16" (8.0mm)	12	11346103	25	B11155300AF	38	B1190530K00	51	11347309	64	11347408	Spare parts type 補用パーツ仕様	
M□	3/8" (9.5mm)	13	11346103	26	B11155300AM	39	B1190530M00	52	11347309	65	11347408	Special type 特別仕様	

[Note] 1.Enter A(standard feed type) or B(coarse feed type) in the box(□) shown in the column for sub-gauge type.      [注記] 1.サブゲージ仕様名の欄の□内は A→標準送りタイプ B→粗目送りタイプ

TABLE OF EXCHANGING GAUGE PARTS (1)

No.	Parts No.	Parts name	Remarks	Level	Cons	Qty
48	11347101	WASTE MATERIAL GUARD G				1
49	11347101	WASTE MATERIAL GUARD G				1
50	11347101	WASTE MATERIAL GUARD G				1
51	11347309	WASTE MATERIAL GUARD K				1
52	11347309	WASTE MATERIAL GUARD K				1
53	11347002	WASTE MATERIAL GUARD E				1
54	11347002	WASTE MATERIAL GUARD E				1
55	11347002	WASTE MATERIAL GUARD E				1
56	11347002	WASTE MATERIAL GUARD E				1
57	11347002	WASTE MATERIAL GUARD E				1
58	11347002	WASTE MATERIAL GUARD E				1
59	11347002	WASTE MATERIAL GUARD E				1
60	11347200	WASTE MATERIAL GUARD G				1
61	11347200	WASTE MATERIAL GUARD G				1
62	11347200	WASTE MATERIAL GUARD G				1
63	11347200	WASTE MATERIAL GUARD G				1
64	11347408	WASTE MATERIAL GUARD K				1
65	11347408	WASTE MATERIAL GUARD K				1

TABLE OF EXCHANGING GAUGE PARTS (2)

Specifications of the sub-gauge サブゲージ仕様	Gauge width サブゲージ巾	1 Chip guard 布屑ガイド		2 Hinging presser (asm) 自由押え(組)		3 Feed dog 送り歯				4 Knife メス		Type 仕様	Note 備考
		Ref.no	Part no	Ref.no	Part no	A		B		Ref.no	Part no		
						Ref.no	Part no	Ref.no	Part no				
CA□	5/64" (2.0mm)	1	11346400	14	B1524530CB0	27	B1613530C0A			50	B4145530C00	Spare parts type 補用パーツ仕様	Operate your sewing machine with the stitch length set to 2mm or less.(Cut-after type) 送りピッチ2mm以下(後メスタイプ)
D□	1/8" (3.2mm)	2	11346400	15	B1524530DB0	28	B1609530D00	40	B1609530E00	51 B4121522000 52 B4145530B0A 53 E4145530B00	Standard type 標準仕様		
DA□	7/64" (2.8mm)	3	11346400	16	B1524530DB0	29	B1609530D00	41	B1609530E00	54 B4121522000 55 B4145530B0A 56 E4145530B00	Spare parts type 補用パーツ仕様		
DC□	1/8" (3.2mm)	4	11346400	17	B1524530DB0	30	B1609530D0E			57 B4121522000 58 B4145530B0A 59 E4145530B00	Spare parts type 補用パーツ仕様	Gauge of chain-off thread 空環用ゲージ	
DD□	1/8" (3.2mm)	5	11346400	18	B1524530DBA	31	B1609530J00			60 B4121522000 61 B4145530B0A 62 E4145530B00	Spare parts type 補用パーツ仕様	B11100120AA(B111001200A) Exclusive slide plate 滑り板	
E□	5/32" (4.0mm)	6	11346400	19	B1524530EB0	32	B1609530D00	42	B1609530E00	63 B4121522000 64 B4145530B0A 65 E4145530B00	Special type 特別仕様		
F□	3/16" (4.8mm)	7	11346400	20	B1524530EB0	33	B1609530D00	43	B1609530E00	66 B4121522000 67 B4145530B0A 68 E4145530B00	Special type 特別仕様		
G□	7/32" (5.6mm)	8	11346400	21	B1524530GB0	34	B1609530G00	44	B1609530H00	69 B4121522000 70 B4145530B0A 71 E4145530B00	Special type 特別仕様		
H□	1/4" (6.4mm)	9	11346509	22	B1524530GB0	35	B1609530G00	45	B1609530H00	72 B4121522000 73 B4145530B0A 74 E4145530B00	Spare parts type 補用パーツ仕様		
J□	9/32" (7.1mm)	10	11346509	23	B1524530GB0	36	B1609530G00	46	B1609530H00	75 B4121522000 76 B4145530B0A 77 E4145530B00	Spare parts type 補用パーツ仕様		
JA□	19/64" (7.5mm)	11	11346509	24	B1524530GB0	37	B1609530G00	47	B1609530H00	78 B4121522000 79 B4145530B0A 80 E4145530B00	Spare parts type 補用パーツ仕様		
K□	5/16" (8.0mm)	12	11346509	25	B1524530GB0	38	B1609530G00	48	B1609530H00	81 B4121522000 82 B4145530B0A 83 E4145530B00	Spare parts type 補用パーツ仕様		
M□	3/8" (9.5mm)	13	11346509	26	B1524530GB0	39	B1609530G00	49	B1609530H00	84 B4121522000 85 B4145530B0A 86 E4145530B00	Special type 特別仕様		

[Note] 1. Enter A(standard feed type) or B(coarse feed type) in the box. □ shows in the column for sub-gauge type.  
2. For the classification of knives in terms of specification:  
B4121522000 . . . . . For Japan  
B4145530B0A . . . . . For export  
B4145530B00 . . . . . Accessory for the machine for Japan  
(cutting width is 2.4mm or more)  
B4145530C00 . . . . . For the cutting width of 2.3mm or less (including accessories)

[注記] 1. サブゲージ仕様名の欄の□内は A→標準送りタイプ B→粗目送りタイプ  
2. メスの仕様区分は→B 4 1 2 1 5 2 2 0 0 . . . . . 日本用  
B4145530B0A . . . . . 輸出用  
B4145530B00 . . . . . 日本付専用(切り巾2.4mm以上)  
B4145530C00 . . . . . 切り巾2.3mm以下(用付属品)

TABLE OF EXCHANGING GAUGE PARTS (2)

No.	Parts No.	Parts name	Remarks	Level	Cons	Qty
1	11346400	WASTE MATERIAL GUIDE				1
2	11346400	WASTE MATERIAL GUIDE				1
3	11346400	WASTE MATERIAL GUIDE				1
4	11346400	WASTE MATERIAL GUIDE				1
5	11346400	WASTE MATERIAL GUIDE				1
6	11346400	WASTE MATERIAL GUIDE				1
7	11346400	WASTE MATERIAL GUIDE				1
8	11346400	WASTE MATERIAL GUIDE				1
9	11346509	WASTE MATERIAL GUIDE C				1
10	11346509	WASTE MATERIAL GUIDE C				1
11	11346509	WASTE MATERIAL GUIDE C				1
12	11346509	WASTE MATERIAL GUIDE C				1
13	11346509	WASTE MATERIAL GUIDE C				1
14	B1524530CB0	PRESSER FOOT ASM.				1
15	B1524530DB0	PRESSER FOOT ASM.				1
16	B1524530DB0	PRESSER FOOT ASM.				1
17	B1524530DB0	PRESSER FOOT ASM.				1
18	B1524530DBA	PRESSER DA WITH FINGER GUARD				1
19	B1524530EB0	PRESSER FOOT ASM. E				1
20	B1524530EB0	PRESSER FOOT ASM. E				1
21	B1524530GB0	PRESSER FOOT ASM G WITH GUARD				1
22	B1524530GB0	PRESSER FOOT ASM G WITH GUARD				1
23	B1524530GB0	PRESSER FOOT ASM G WITH GUARD				1
24	B1524530GB0	PRESSER FOOT ASM G WITH GUARD				1
25	B1524530GB0	PRESSER FOOT ASM G WITH GUARD				1
26	B1524530GB0	PRESSER FOOT ASM G WITH GUARD				1
27	B1609530C0A	FEED DOG CA				1
28	B1609530D00	FEED DOG D				1
29	B1609530D00	FEED DOG D				1
30	B1609530D0E	FEED DOG DE				1
31	B1609530J00	FEED DOG J				1
32	B1609530D00	FEED DOG D				1
33	B1609530D00	FEED DOG D				1
34	B1609530G00	FEED DOG G				1
35	B1609530G00	FEED DOG G				1
36	B1609530G00	FEED DOG G				1
37	B1609530G00	FEED DOG G				1
38	B1609530G00	FEED DOG G				1
39	B1609530G00	FEED DOG G				1
40	B1609530E00	FEED DOG E				1
41	B1609530E00	FEED DOG E				1
42	B1609530E00	FEED DOG E				1
43	B1609530E00	FEED DOG E				1
44	B1609530H00	FEED DOG H				1
45	B1609530H00	FEED DOG H				1
46	B1609530H00	FEED DOG H				1
47	B1609530H00	FEED DOG H				1

TABLE OF EXCHANGING GAUGE PARTS (2)

Specifications of the sub-gauge サブゲージ仕様	Gauge width サブゲージ巾	1 Chip guard 布屑ガイド		2 Hinging presser (asm) 自由押え(組)		3 Feed dog 送り歯				4 Knife メス		Type 仕様	Note 備考
		Ref.no	Part no	Ref.no	Part no	A		B		Ref.no	Part no		
						Ref.no	Part no	Ref.no	Part no				
CA□	5/64" (2.0mm)	1	11346400	14	B1524530CB0	27	B1613530C0A			50	B4145530C00	Spare parts type 補用パーツ仕様	Operate your sewing machine with the stitch length set to 2mm or less.(Cut-after type) 送りピッチ2mm以下(後メスタイプ)
D□	1/8" (3.2mm)	2	11346400	15	B1524530DB0	28	B1609530D00	40	B1609530E00	51 B4121522000 52 B4145530B0A 53 E4145530B00	Standard type 標準仕様		
DA□	7/64" (2.8mm)	3	11346400	16	B1524530DB0	29	B1609530D00	41	B1609530E00	54 B4121522000 55 B4145530B0A 56 E4145530B00	Spare parts type 補用パーツ仕様		
DC□	1/8" (3.2mm)	4	11346400	17	B1524530DB0	30	B1609530D0E			57 B4121522000 58 B4145530B0A 59 E4145530B00	Spare parts type 補用パーツ仕様	Gauge of chain-off thread 空環用ゲージ	
DD□	1/8" (3.2mm)	5	11346400	18	B1524530DBA	31	B1609530J00			60 B4121522000 61 B4145530B0A 62 E4145530B00	Spare parts type 補用パーツ仕様	B11100120AA(B111001200A) Exclusive slide plate 滑り板	
E□	5/32" (4.0mm)	6	11346400	19	B1524530EB0	32	B1609530D00	42	B1609530E00	63 B4121522000 64 B4145530B0A 65 E4145530B00	Special type 特別仕様		
F□	3/16" (4.8mm)	7	11346400	20	B1524530EB0	33	B1609530D00	43	B1609530E00	66 B4121522000 67 B4145530B0A 68 E4145530B00	Special type 特別仕様		
G□	7/32" (5.6mm)	8	11346400	21	B1524530GB0	34	B1609530G00	44	B1609530H00	69 B4121522000 70 B4145530B0A 71 E4145530B00	Special type 特別仕様		
H□	1/4" (6.4mm)	9	11346509	22	B1524530GB0	35	B1609530G00	45	B1609530H00	72 B4121522000 73 B4145530B0A 74 E4145530B00	Spare parts type 補用パーツ仕様		
J□	9/32" (7.1mm)	10	11346509	23	B1524530GB0	36	B1609530G00	46	B1609530H00	75 B4121522000 76 B4145530B0A 77 E4145530B00	Spare parts type 補用パーツ仕様		
JA□	19/64" (7.5mm)	11	11346509	24	B1524530GB0	37	B1609530G00	47	B1609530H00	78 B4121522000 79 B4145530B0A 80 E4145530B00	Spare parts type 補用パーツ仕様		
K□	5/16" (8.0mm)	12	11346509	25	B1524530GB0	38	B1609530G00	48	B1609530H00	81 B4121522000 82 B4145530B0A 83 E4145530B00	Spare parts type 補用パーツ仕様		
M□	3/8" (9.5mm)	13	11346509	26	B1524530GB0	39	B1609530G00	49	B1609530H00	84 B4121522000 85 B4145530B0A 86 E4145530B00	Special type 特別仕様		

[Note] 1. Enter A(standard feed type) or B(coarse feed type) in the box. □ shows in the column for sub-gauge type.  
2. For the classification of knives in terms of specification:  
B4121522000 . . . . . For Japan  
B4145530B0A . . . . . For export  
B4145530B00 . . . . . Accessory for the machine for Japan  
(cutting width is 2.4mm or more)  
B4145530C00 . . . . . For the cutting width of 2.3mm or less (including accessories)

[注記] 1. サブゲージ仕様名の欄の□内は A→標準送りタイプ B→粗目送りタイプ  
2. メスの仕様区分は→B 4 1 2 1 5 2 2 0 0 . . . . . 日本用  
B4145530B0A . . . . . 輸出用  
B4145530B00 . . . . . 日本付属用(切り巾2.4mm以上)  
B4145530C00 . . . . . 切り巾2.3mm以下(用付属品)

TABLE OF EXCHANGING GAUGE PARTS (2)

No.	Parts No.	Parts name	Remarks	Level	Cons	Qty
48	B1609530H00	FEED DOG H				1
49	B1609530H00	FEED DOG H				1
50	B4145530C00	KNIFE (C)				1
51	B4121522000	KNIFE				1
52	B4145530B0A	KNIFE				1
53	B4145530B00	CLOTH CUTTING KNIFE B				1
54	B4121522000	KNIFE				1
55	B4145530B0A	KNIFE				1
56	B4145530B00	CLOTH CUTTING KNIFE B				1
57	B4121522000	KNIFE				1
58	B4145530B0A	KNIFE				1
59	B4145530B00	CLOTH CUTTING KNIFE B				1
60	B4121522000	KNIFE				1
61	B4145530B0A	KNIFE				1
62	B4145530B00	CLOTH CUTTING KNIFE B				1
63	B4121522000	KNIFE				1
64	B4145530B0A	KNIFE				1
65	B4145530B00	CLOTH CUTTING KNIFE B				1
66	B4121522000	KNIFE				1
67	B4145530B0A	KNIFE				1
68	B4145530B00	CLOTH CUTTING KNIFE B				1
69	B4121522000	KNIFE				1
70	B4145530B0A	KNIFE				1
71	B4145530B00	CLOTH CUTTING KNIFE B				1
72	B4121522000	KNIFE				1
73	B4145530B0A	KNIFE				1
74	B4145530B00	CLOTH CUTTING KNIFE B				1
75	B4121522000	KNIFE				1
76	B4145530B0A	KNIFE				1
77	B4145530B00	CLOTH CUTTING KNIFE B				1
78	B4121522000	KNIFE				1
79	B4145530B0A	KNIFE				1
80	B4145530B00	CLOTH CUTTING KNIFE B				1
81	B4121522000	KNIFE				1
82	B4145530B0A	KNIFE				1
83	B4145530B00	CLOTH CUTTING KNIFE B				1
84	B4121522000	KNIFE				1
85	B4145530B0A	KNIFE				1
86	B4145530B00	CLOTH CUTTING KNIFE B				1



LIST FOR INFORMATION OF CHANGE

As to the place changed, refer to the corresponding Rev.No.  
 When previous parts(Obsoleted part)and new parts(Added parts)are  
 not interchangeable with each other:  
 In this case,even obsoleted parts(D.)can be ordered with the  
 obsoleted part number,so select the parts with changed dates and  
 place your orders.

変更箇所は、該当Rev.No.版をご参照ください。  
 部品の互換性がない変更の場合は、削除された品番でも、ご注文できます。

29133709  
 No.0888-10 Rev.No.

\*A:Added parts追加部品/D:Obsoleted parts削除部品/E:Erratum訂正

* Rev. No.	Page 頁	Ref. No.	Parts No. 品番	* Rev. No.	Page 頁	Ref. No.	Parts No. 品番
D 09	2	19	111-00104	A 10	2	19	401-11022
D 09	2	67	M6004-350-AAC				
D 09	2	68	SS-4121215-SP				
D 09	2	69	WP-0501016-SD				
D 09	2	70	M6004-350-AAF				
D 09	2	71	M6004-350-AAA				
D 09	2	82	229-01904	A 10	2	81	114-15205
D 09	2	83	M6004-350-AAL				
				A 10	2	71	401-16677
D 09	4	4	110-39070	A 10	4	4	229-18072
D 09	4	5	110-39062	A 10	4	5	229-18064
D 09	4	6	B1905-541-B00	A 10	4	6	229-18403
				A 10	4	7	229-18502
				A 10	4	8	229-18601
				A 10	4	9	229-18700
D 09	4	7	110-05204	A 10	4	10	229-18106
D 09	4	8	B1408-552-000	A 10	4	11	229-06606
D 09	4	9	B1903-552-000	A 10	4	12	229-18304
D 09	4	11	113-70871	A 10	4	14	400-97024
D 09	4	16	113-70863	A 10	4	16	400-95787
D 09	4	17	113-71606				
D 09	4	18	B4107-522-000	A 10	4	18	PS-0400082-KP
D 09	4	19	113-49214	A 10	4	17	400-95788
D 09	4	44	110-02508	A 10	4	44	401-05231
				A 10	12	1	401-20641
				A 10	14	1	113-56953
D 09	14	21	SS-7090520-TP				
D 09	14	22	SS-7110830-SP				
D 09	14	25	113-57209				
D 09	18	10	112-33202	A 10	18	10	401-12705
D 09	18	11	HW-2003900-00				
D 09	18	12	HA-0060000-00	A 10	18	12	HA-0060000-0A
D 09	18	16	HW-5000700-00				
D 09	18	21	HK-0346400-0B				
D 09	22	6	RO-1082401-00	A 10	22	6	RO-0982401-00
D 09	22	16	SM-9062563-TR	A 10	22	16	401-01720

## HOW TO MAKE USE OF THIS PARTS LIST

### 1.Explanation of codes

1)"\*"mark.....means this part is changed from the previous parts book.

As to the details of the change, refer to the "List for information of change".

2)"#01".....refer to "Note" explanation at bottom of page.

### 2.Codes on the "Qty" column

- Each numeral indicates the number of parts required.
- "0.1" and "2.5" indicate the length (in meters) of the respective parts.

3.Parentheses mean that the corresponding part is a subpart that constructs an assembly part.

4.Dotted lines on the Figures indicate assembly parts.

### 1."注記"欄の記号説明

1) "\*"印.....前回のパーツブックに比較して今回変更された部品を意味します。

変更内容は、"変更情報リスト"を参照してください。

2) "#01".....ページ下の"注記"の説明を参照してください。

2.数量欄の数字は、個数を表し、0.1、2.5等の数値は、長さ（単位メートル）を表します。

3.数量欄の（ ）は、組部品を構成している子部品であることを意味します。

4.イラストページの-----枠は、組構成であることを意味します。

# NUMERICAL INDEX OF PARTS

PART NO	PAGE	REF NO.	PART NO	PAGE	REF NO.	PART NO	PAGE	REF NO.
11001609	4	52	11300506	2	2	11347101	40	50
11002409	6	28	11300605	4	56	11347101	42	50
11002904	6	37	11301355	10	30	11347200	42	63
11003308	2	12	11301405	10	31	11347309	42	52
11004207	8	23	11301603	10	11	11347408	42	65
11009800	14	5	11301652	10	6	11349008	6	13
11015906	8	32	11301702	10	5	11349107	6	42
11017357	6	2	11302304	6	25	11351004	8	39
11023108	34	3	11302353	6	23	11351400	18	2
11030202	2	18	11302411	14	12	11351509	18	5
11032158	6	33	11302502	14	40	11351608	18	11
11038650	8	41	11302619	16	67	11351806	18	3
11038759	8	36	11302700	14	17	11351905	18	4
11038809	8	29	11303161	14	26	11352101	18	8
11043106	20	58	11303328	14	4	11352200	18	6
11043205	20	57	11303567	26	25	11352309	18	17
11043304	20	62	11303807	26	19	11352408	18	15
11047107	34	4	11303906	26	24	11352507	18	24
11071495	6	29	11304003	26	2	11352606	18	20
11095254	2	15	11304052	26	1	11352705	18	41
11101300	28	17	11304151	26	28	11352804	18	43
11101508	28	19	11304201	26	13	11352903	18	39
11101607	28	21	11304300	26	15	11353059	18	32
11102308	28	12	11304409	26	30	11353307	20	53
11102605	2	10	11305000	16	73	11353406	18	26
11141355	8	34	11305901	10	36	11353505	18	31
11205309	10	14	11306107	10	33	11353604	18	30
11205408	10	13	11306206	10	45	11353653	18	28
11210903	26	10	11307352	32	11	11354008	18	46
11211000	26	4	11311057	16	71	11354057	18	45
11214509	26	22	11314267	16	66	11354107	18	40
11217601	28	32	11314507	14	1	11354404	18	21
11221504	32	29	11325750	2	1	11354602	18	10
11222007	32	30	11345600	4	60	11355054	20	52
11228400	28	28	11345709	4	58	11355351	10	44
11231503	32	27	11345808	4	73	11355609	10	40
11233053	30	15	11346004	4	76	11356201	32	34
11233251	30	19	11346004	40	8	11356904	22	4
11233301	30	7	11346103	40	13	11356953	22	1
11233400	30	4	11346400	4	72	11357001	22	8
11234408	30	6	11346400	44	8	11357100	22	13
11234507	30	13	11346509	44	13	11357209	22	6
11234606	30	8	11346905	4	75	11357308	22	3
11258001	30	3	11346905	40	46	11357407	22	5
11300407	4	55	11347002	42	59	11357506	22	14

NUMERICAL INDEX OF PARTS

PART NO	PAGE	REF NO.	PART NO	PAGE	REF NO.	PART NO	PAGE	REF NO.
11357704	22	10	22907604	10	23	22921407	2	34
11357803	22	24	22907703	10	24	22921506	2	37
11357902	22	29	22907802	10	1	22921605	2	39
11357951	22	27	22908156	10	7	22921704	2	35
11358108	22	22	22908305	10	9	22921803	2	36
11358207	22	19	22908552	10	4	22923015	32	14
11358306	22	31	22908909	10	19	22923056	32	12
11359700	30	17	22910103	6	26	22923205	32	17
11359809	30	26	22910608	14	25	22923312	32	13
11359957	30	23	22910707	14	24	22923403	32	19
11360153	30	22	22910806	14	27	22923502	32	21
11360708	34	2	22910905	14	23	22923601	32	20
11360757	34	1	22911002	14	37	22923700	32	15
11361003	34	36	22911101	14	13	22923809	32	18
11362357	28	1	22911705	14	21	22923908	32	22
11362456	30	1	22911804	14	7	22924005	32	26
11364700	28	13	22912000	14	9	22924609	32	28
11371200	32	6	22912752	16	62	22924807	20	66
11371259	32	4	22912802	16	61	22924906	32	10
11371358	32	7	22912901	14	36	22925002	32	36
11371705	24	53	22913008	16	48	22927305	36	27
11372109	28	24	22915003	14	15	22927354	36	13
11372356	28	22	22915151	14	42	22927404	36	28
11372554	4	66	22915201	14	45	22927602	36	29
11385127	14	6	22915359	16	55	22928105	36	22
11397007	14	10	22916001	8	28	22928303	36	21
11415205	4	81	22916308	8	24	22928402	36	20
12341806	34	33	22916506	8	33	22928501	36	14
13522206	30	11	22916555	8	31	22928709	36	26
22900401	2	11	22917058	8	37	22928808	36	18
22900609	2	27	22917157	8	26	22928907	36	16
22901003	4	54	22918064	6	5	22929004	36	17
22901250	4	50	22918072	6	4	22930309	38	14
22901805	4	80	22918106	6	10	22930358	38	1
22903306	6	43	22918304	6	12	22930408	38	10
22904155	6	45	22918403	6	6~9	22930507	38	9
22904155	14	57	22918502	6	6~9	22930556	38	15
22904155	16	57	22918601	6	6~9	22930705	38	7
22905004	8	21	22918700	6	6~9	22930804	38	5
22905103	8	22	22919203	6	3	22930903	38	4
22906457	8	5	22920508	2	29	22931000	38	3
22906606	6	11	22920607	2	46	22931109	38	2
22907406	10	25	22921001	2	30	22931307	38	11
22907505	10	22	22921209	2	38	22931406	38	8
22907554	10	21	22921308	2	33	22931703	34	34

NUMERICAL INDEX OF PARTS

PART NO	PAGE	REF NO.	PART NO	PAGE	REF NO.	PART NO	PAGE	REF NO.
22932107	34	8	22954101	28	4	B1190530F00	40	33
22932156	34	7	22954200	28	5	B1190530G00	40	34
22932206	34	11	22954309	28	6	B1190530H00	40	35
22932305	34	17	22954606	28	2	B1190530J00	40	36
22932404	34	14	22958300	2	8	B1190530JOA	40	37
22932453	34	13	22962609	28	18	B1190530K00	40	38
22932909	8	35	22962708	18	37	B1190530M00	40	39
22933402	36	2	22962807	10	37	B1193530000	4	74
22933451	36	1	22962906	28	20	B1213552000A	6	39
22933501	36	3	22967202	16	60	B1215552000	6	41
22933600	36	5	22970602	14	35	B13050120A0	8	12
22933659	36	4	22971105	16	65	B13061550A0	8	14
22933758	36	6	22971204	14	2	B13061550B0	8	11
22933907	36	7	22971550	14	19	B13061550C0	8	10
22934004	36	8	22972608	2	43	B13071550A0	8	17
22934202	34	22	40010395	16	49	B13071550B0	8	16
22934251	34	19	40053719	34	32	B13081550A0	8	19
22934301	34	23	40056521	34	31	B1401530A00	8	2
22934400	34	21	40060989	10	27	B1401530B00	8	42
22934509	34	25	40064815	34	26	B1412352B00	26	5
22934608	34	20	40081220	14	11	B1418530000	8	8
22934707	34	15	40090058	8	4	B14537710A0	18	23
22937965	6	36	40095787	6	16	B1501530000	12	49
22940654	16	52	40095788	6	17	B1521555000	10	2
22940753	14	34	40097024	6	14	B1524530CB0	44	14
22940803	14	30	40101720	34	16	B1524530DB0	10	29
22942601	8	40	40105231	6	44	B1524530DB0	44	17
22944508	10	15	40111022	2	19	B1524530DBA	44	18
22944607	10	42	40112705	30	10	B1524530EB0	44	20
22944706	10	34	40116677	4	71	B1524530GB0	44	26
22945307	2	40	40120641	18	1	B1609530C0A	44	27
22945356	2	32	B1110012000	4	51	B1609530D00	14	31
22945406	2	25	B1115522000A	4	68	B1609530D00	44	33
22945463	2	20	B11155300AD	4	67	B1609530D0E	44	30
22945505	2	22	B11155300AD	40	18	B1609530E00	44	43
22945604	2	24	B11155300AF	40	25	B1609530G00	44	39
22945703	2	21	B11155300AM	40	26	B1609530H00	44	49
22945802	2	23	B1148555000	14	8	B1609530H00	46	49
22947006	32	1	B1190530C0A	40	27	B1609530J00	44	31
22950000	18	38	B1190530D00	2	44	B1636581C00	16	70
22950356	18	47	B1190530D00	40	28	B2906415000	26	6
22950950	20	50	B1190530D0A	40	29	B3118415000	4	62
22951008	20	55	B1190530D0B	40	31	B31334150A0	4	61
22951404	20	59	B1190530D0C	40	30	B3136415000	4	63
22951552	20	67	B1190530E00	40	32	B3404122000	32	35

# NUMERICAL INDEX OF PARTS

PART NO	PAGE	REF NO.	PART NO	PAGE	REF NO.	PART NO	PAGE	REF NO.
B3538112000	32	8	NS6120480SP	22	42	SD0640604TP	22	7
B4114530000	24	52	NS6150310SP	18	25	SD0641452TP	20	49
B4115530000	24	50	NS6150310SP	22	32	SD0700451TP	28	33
B4116530000	24	51	NS6150310SP	26	14	SD0700711TP	28	35
B41175300A0	22	35	NS6150430SP	18	70	SD0701511TP	18	33
B4120530000	22	46	NS6150430SP	20	70	SD0720331SP	10	20
B4121522000	22	25	NS6150430SP	26	17	SD0790431SP	22	15
B4121522000	46	84	NS6160520SP	22	23	SD0790501SP	26	12
B4122522000	22	44	NS6620310SP	12	50	SD0920321SP	22	21
B412352200A	22	16	NS6660410SH	20	63	SD1000801SH	14	44
B4124530000	22	30	NS6660430SP	20	64	SE4301041SR	32	16
B4126530000	24	54	NS6680410SP	14	39	SK3412000SC	34	27
B4145530B00	46	86	PS0400082KP	6	18	SK3412000SC	36	31
B4145530B0A	22	43	RC0150001KP	14	51	SL4030631SC	30	2
B4145530B0A	46	85	RC0150001KP	16	51	SL4030641SE	30	18
B4145530C00	46	50	RC1850001KP	6	22	SL4030851SF	32	23
B8228125000	34	35	RC2651218KP	18	7	SL4051001MZ	6	38
BT0500300EA	32	5	RE0300000K0	10	35	SM4031501SC	28	8
BT0600402EA	32	3	RE0300000K0	30	14	SM4040655SP	28	3
CM300200001	4	79	RE0500000K0	10	10	SM4041655SP	28	7
CM301300001	4	70	RE0500000K0	14	22	SM4051405SE	38	12
CQ252000000	32	33	RE0500000K0	20	54	SM6061610SC	38	6
CS064061ASP	10	17	RE0500000K0	22	20	SM8061010TP	16	63
CS120101BSH	26	8	RE0500000KP	28	16	SM8061050TP	16	64
D2468555B00	28	27	RE0600000K0	18	18	SM8063012TR	34	10
D2588L8WB00	18	22	RE0900000K0	30	9	SM9061203SE	34	24
HA001900000	28	11	RE1000000K0	34	12	SQ1150501SD	32	32
HA00600000A	30	12	RE1200000K0	28	25	SS1090510SP	18	14
HK034610140	20	69	RO029180100	6	40	SS1120710SP	2	57
HK03464000B	20	68	RO037180100	10	3	SS1120710SP	4	57
HK03464000B	28	29	RO044240100	6	21	SS2110915SP	2	78
HW500070000	28	9	RO048190100	22	26	SS2110915SP	4	78
M40071100AA	6	34	RO078190100	16	59	SS4080310SP	4	69
M40071100AB	6	35	RO092270200	14	16	SS4080515SP	22	45
MC200500900	8	3	RO098240100	34	6	SS4080620TP	14	32
MDB100B1400	8	9	RO195240100	32	2	SS4090615SP	6	27
NM6040000SN	20	61	SB309000400	26	18	SS4110515SP	10	48
NM6050001SE	38	17	SD0490261SP	36	23	SS4110515SP	12	48
NM6060001SE	34	18	SD0500251SP	18	13	SS4110515SP	36	15
NM6160511SE	38	18	SD0550212TP	30	24	SS4110715SP	18	12
NS6090310SP	2	13	SD0600322SD	12	51	SS4110715SP	34	30
NS6090310SP	34	29	SD0600361SP	18	34	SS4110915TP	8	30
NS6110310SP	18	19	SD0630275SP	18	44	SS4120615SP	2	65
NS6110420SP	28	34	SD0640261SP	10	39	SS4120615SP	4	65
NS6120310SP	22	37	SD0640261SP	18	42	SS4120615SP	10	46

NUMERICAL INDEX OF PARTS

PART NO	PAGE	REF NO.	PART NO	PAGE	REF NO.	PART NO	PAGE	REF NO.
SS4120615SP	28	14	SS6700710SH	34	5	TA0850604R0	2	31
SS4120615SP	32	9	SS7080510TP	8	7	TA1250406R0	4	48
SS4120915SP	2	9	SS7081310SP	36	24	TA1250504R0	2	5
SS4120915SP	8	25	SS7090410SP	30	25	TA1250705R0	2	7
SS4120915SP	22	34	SS7090520TP	22	9	TA1250804R0	8	1
SS4120915SP	28	15	SS7090620TP	10	18	TA2000502R0	2	14
SS4120915SP	30	16	SS7090710SP	10	28	TA2101002R0	2	17
SS4121015SP	4	49	SS7091110TP	34	28	WP0371026SD	22	39
SS4121415SP	30	21	SS7110350SP	36	19	WP0450000SD	20	60
SS4121415SP	36	9	SS7110740TP	10	38	WP0450801SD	6	31
SS4150915SP	10	47	SS7110740TP	16	50	WP0450826SC	36	30
SS4150915SP	18	16	SS7110740TP	28	23	WP0480856SP	16	54
SS4150915SP	22	18	SS7110830SP	22	12	WP0480856SP	22	47
SS4150915SP	32	25	SS7111120SP	16	56	WP0501016SD	22	41
SS4151215SP	20	65	SS7121410SP	26	29	WP0501016SD	36	10
SS4151215SP	28	31	SS7121410TP	14	53	WP0621016SD	26	16
SS6060210SP	4	53	SS7121410TP	16	53	WP0621016SH	18	36
SS6080340SP	32	31	SS7121610SP	14	43	WP0650876SD	10	12
SS6080410SP	4	77	SS7620750SP	16	69	WP0702026SP	16	72
SS6090510SP	20	48	SS7681650TP	6	19	WP0722316SH	28	36
SS6090560TP	14	3	SS8090670SP	2	41	WP1221016SP	30	5
SS6090620TP	14	38	SS8110310SP	26	26	WP1612616SE	38	19
SS6090660TP	26	7	SS8110410TP	8	38	WP1703001SC	28	26
SS6090670TP	8	6	SS8110510SP	36	25	WS0451040KP	32	38
SS6090810SP	26	23	SS8110520TP	20	51	WS0510002KN	38	16
SS6090810TP	24	49	SS8110710SP	18	9	WS0651310KP	32	37
SS6090910SP	10	41	SS8120740SP	26	21	WS1643202KR	38	20
SS6090910SP	22	40	SS8150710TP	2	42	WT0530002KS	4	64
SS6110420TP	8	27	SS8150710TP	14	28	WZ1250300K0	16	68
SS6110610TP	2	59	SS8151150TP	6	1			
SS6110610TP	4	59	SS8151150TP	22	17			
SS6110640SP	26	27	SS8151550SP	6	32			
SS6110710TP	20	56	SS8152080SP	22	33			
SS6110710TP	30	20	SS8660410SP	26	9			
SS6110810TP	22	38	SS8660610TP	6	46			
SS6111010TP	32	24	SS8660610TP	10	26			
SS6111210SP	6	30	SS8660610TP	14	58			
SS6121220TP	20	71	SS8660610TP	16	58			
SS6121220TP	22	28	SS8660610TP	18	27			
SS6121220TP	26	3	SS8660810TP	8	20			
SS6121610SP	26	20	SS8681130SP	14	41			
SS6121860SP	16	76	SS8681650TP	6	20			
SS6151220SP	16	74	SS9121010TP	24	48			
SS6660610TP	18	29	SS9121410TP	22	36			
SS6661110SP	6	24	SS9661120CP	16	75			