

MODEL : DDL-5556N-7-WB

List No : 0868-07

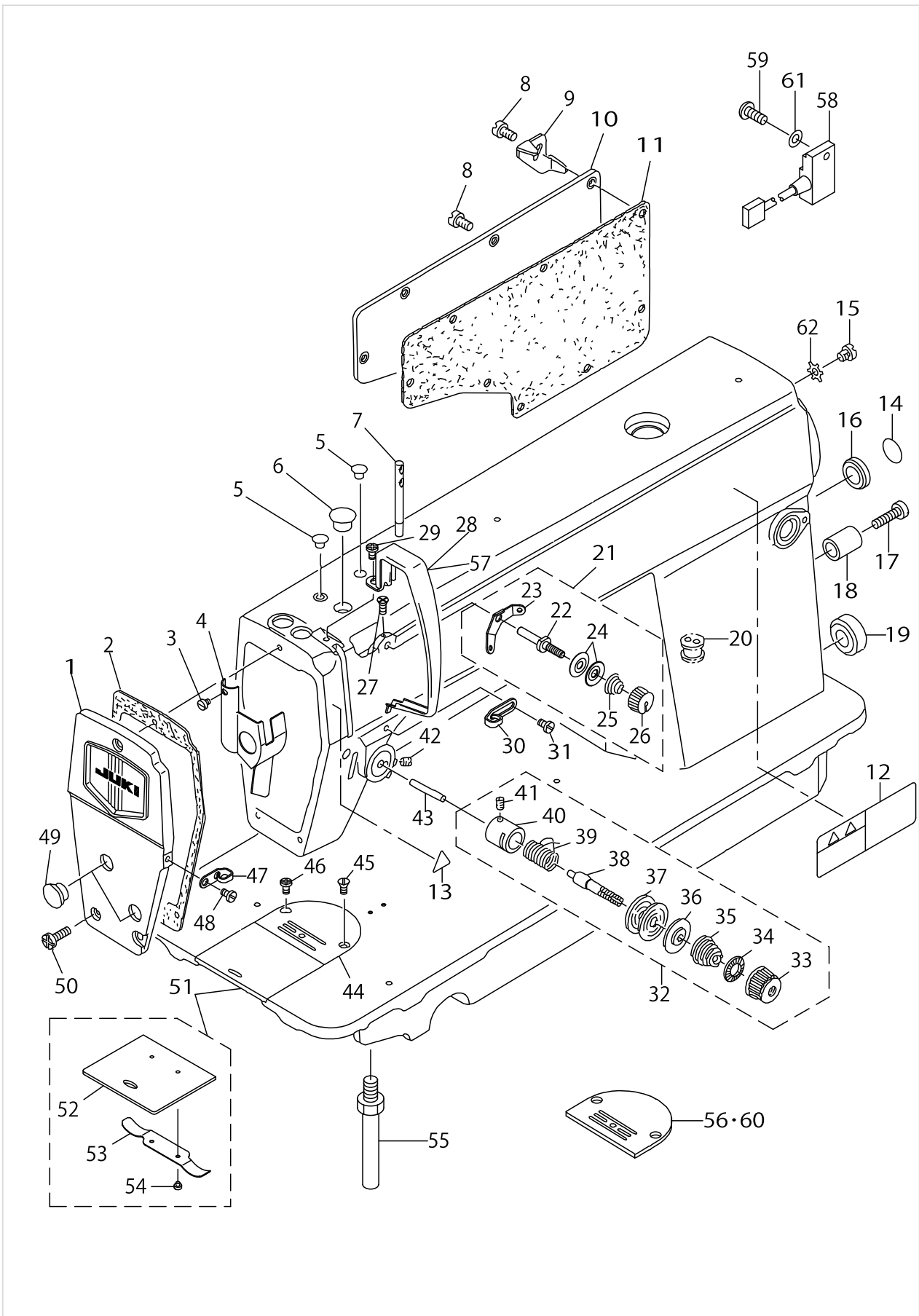
PARTS LIST

Published:09/10/2017

CONTENTS

MACHINE FRAME & MISCELLANEOUS COVER COMPONENTS	1
MAIN SHAFT COMPONENTS	5
NEEDLE BAR , HOOK DRIVING SHAFT & UPRIGHT SHAFT COMPONENTS	7
HAND LIFTER COMPONENTS	9
FEED MECHANISM COMPONENTS.....	11
THREAD TRIMMER COMPONENTS (1).....	15
THREAD TRIMMER COMPONENTS (2).....	19
AUTOMATIC REVERSE FEED COMPONENTS.....	21
WIPER COMPONENTS.....	23
OIL LUBRICATION COMPONENTS	25
OIL RESERVOIR COMPONENTS	27
THREAD HOLDER & AIR COMPONENTS	29
THREAD HAUL COMPONENTS	31
BELT COVER & BOBBIN WINDER COMPONENTS	33
THREAD STAND COMPONENTS.....	35
LIST FOR INFORMATION OF CHANGE.....	37
HOW TO MAKE USE OF THIS PARTS LIST	38

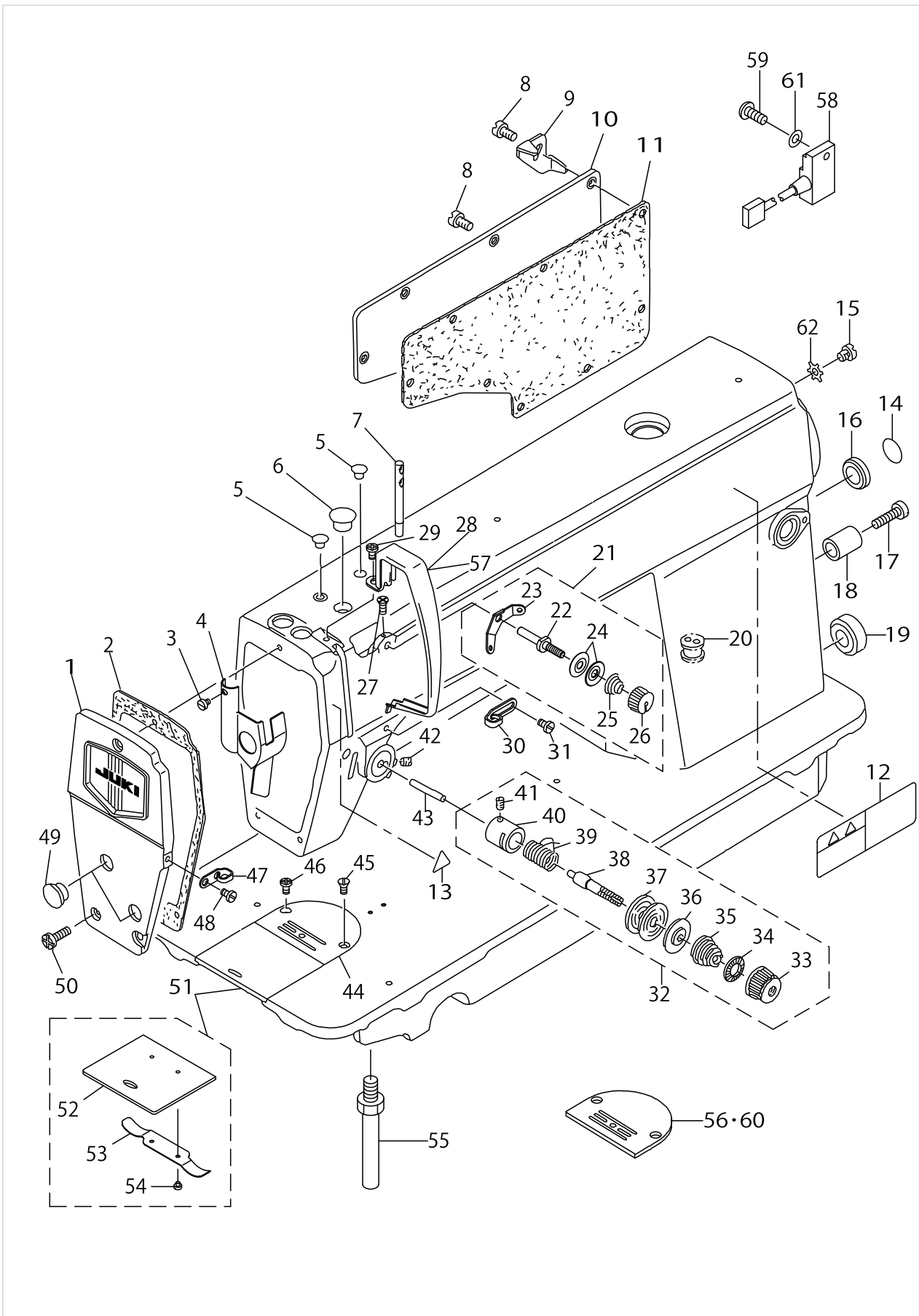
MACHINE FRAME & MISCELLANEOUS COVER COMPONENTS



MACHINE FRAME & MISCELLANEOUS COVER COMPONENTS

No.	Parts No.	Parts name	Remarks	Level	Cons	Qty
1	11070802	FACE PLATE				1
2	11000304	FACE PLATE GASKET				1
3	SS6080410SP	SCREW 1/8-44 L=4				1
4	22900757	FACE PLATE OIL SHIELD ASM.				1
5	TA0850604R0	RUBBER PLUG				2
6	TA1250705R0	RUBBER PLUG				1
7	22958300	NEEDLE THREAD GUIDE PIN				1
8	SS4120915SP	SCREW 3/16-28 L=9				8
9	22954705	CORD FIXING METAL FITTING				1
10	22900401	WINDOW PLATE				1
11	11003308	GASKET				1
12	CM301300001	SAFETY LABEL				1
13	CM300200001	ATTENTION SEAL				1
14	22901805	GROUND MARK				1
15	SS4120615SP	SCREW 3/16-28 L=6				1
16	TA2000502R0	RUBBER PLUG				1
17	SS6121840SP	SCREW 3/16-28 L=18				1
18	11100500	REVERSE FEED LEVER STOPPER				1
19	TA2101002R0	RUBBER PLUG				1
20	11416203	MAGNET CORD RUBBER				1
21	22945463	THREAD TENSION ASM. ,NO.1				1
22	22945414	THREAD TENSION POST		*		1
23	22945604	THREAD TENSION GUIDE		*		1
24	22945802	THREAD TENSION DISK		*		2
25	22945505	THREAD TENSION SPRING		*		1
26	22945703	THREAD TENSION NUT		*		1
27	SS4120615SP	SCREW 3/16-28 L=6				1
28	22900609	THREAD TAKE-UP LEVER COVER				1
29	SS4120615SP	SCREW 3/16-28 L=6				1
30	22920508	ARM THREAD GUIDE A				1
31	22921001	SCREW				1
32	22945356	THREAD TENSION ASM.				1
33	22921308	THREAD TENSION NUT		*		1
34	22921407	ROTATION STOPPER		*		1
35	22921704	THREAD TENSION SPRING, A		*		1
36	22921803	DISK STOPPER		*		1
37	22921506	THREAD TENSION DISK		*		2
38	22921209	THREAD TENSION POST		*		1
39	22921605	THREAD TAKE-UP SPRING		*		1
40	22945307	THREAD TENSION POST BASE		*		1
41	SS8090670SP	SCREW 9/64-40 L= 5.5		*		1
42	SS8150710TP	SCREW 15/64-28 L=7				1
43	22920904	PIN				1
44	11417615	THROAT PLATE A	FOR DDL-5556NC-7			1
45	SS2110920TP	SCREW 11/64-40 L=8.5				1
46	SS2110915SP	SCREW 11/64-40 L=8.5				1
47	22920607	ARM THREAD GUIDE B				1

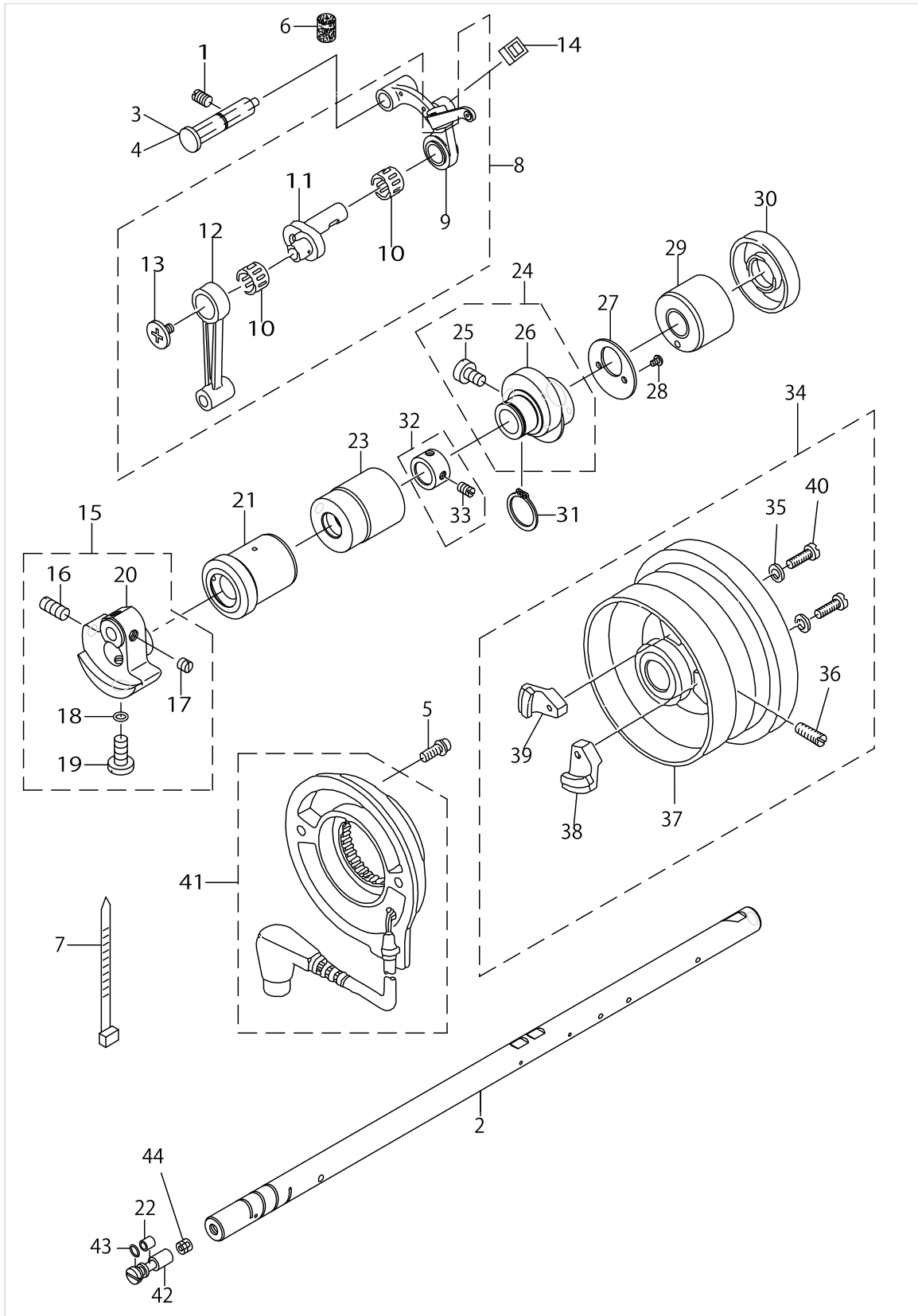
MACHINE FRAME & MISCELLANEOUS COVER COMPONENTS



MACHINE FRAME & MISCELLANEOUS COVER COMPONENTS

No.	Parts No.	Parts name	Remarks	Level	Cons	Qty
48	SS6110610TP	SCREW 11/64-40 L=6				1
49	TA1250406R0	RUBBER PLUG D=12.5 L=4				2
50	SS4120915SP	SCREW 3/16-28 L=9				3
51	22901250	SLIDE PLATE ASM.				1
52	22901201	SLIDE PLATE		*		1
53	22901300	SLIDE PLATE SPRING		*		1
54	SS6060210SP	SCREW 3/32-56 L= 1.9		*		2
55	22901003	BED SCREW STUD				4
56	B1109012I0B	THROAT PLATE (I)	FOR EXPORT			1
57	11415205	THREAD TAKE-UP LEVER COVER(JE)	FOR JE			1
58	M6010350AAA	RESISTANCE PACK	EXCEPT JE			1
59	SS4121215SP	SCREW 3/16-28 L=12				1
60	11497203	THROAT PLATE	FOR DDL-5556ND-7			1
61	WP0501016SD	WASHER 5X10.5X1				1
62	WT0530002KS	TOOTHED WASHER D=5.3				1

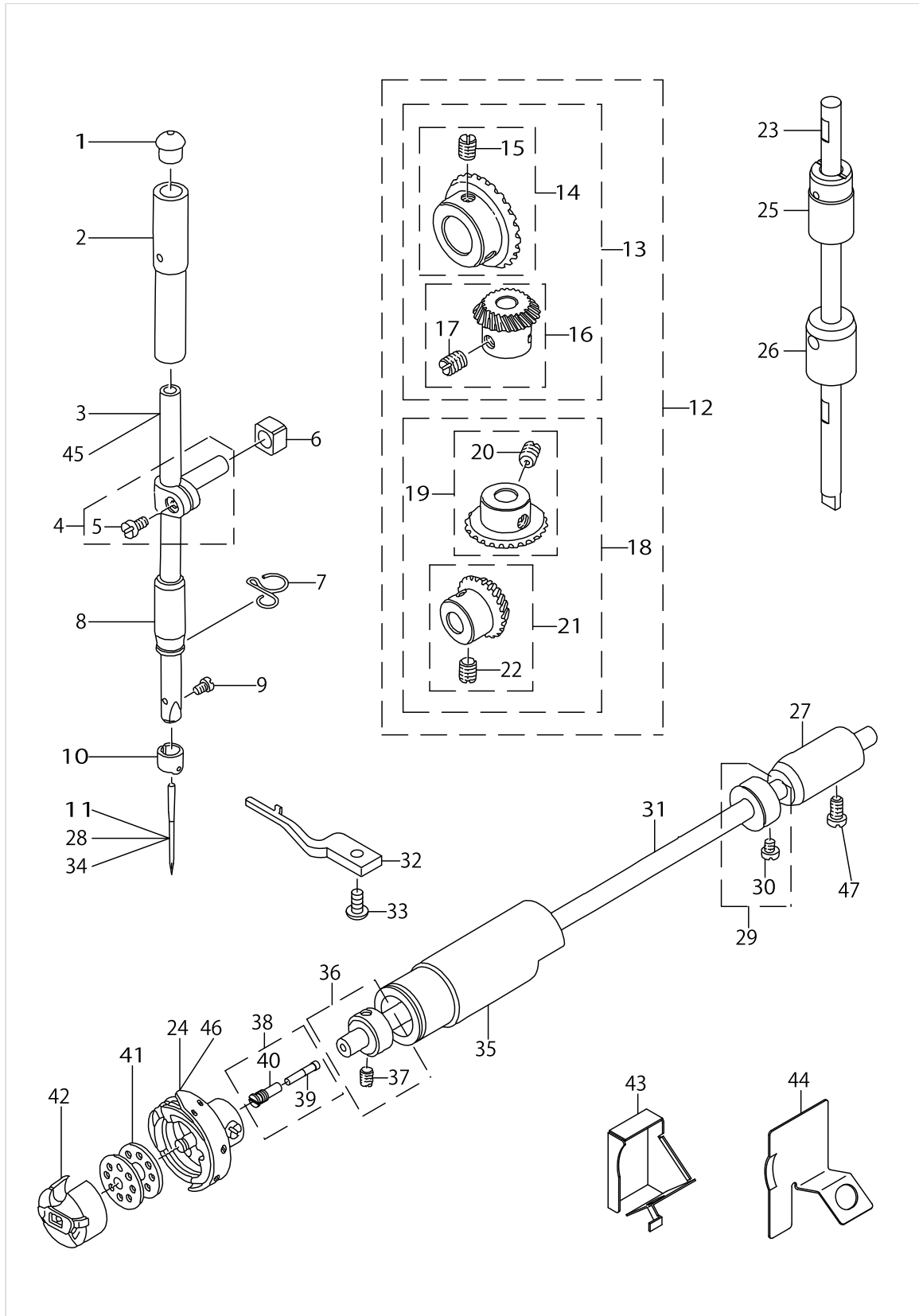
MAIN SHAFT COMPONENTS



MAIN SHAFT COMPONENTS

No.	Parts No.	Parts name	Remarks	Level	Cons	Qty
1	SS8151150TP	SCREW 15/64-28 L=10.5				1
2	22903009	MAIN SHAFT				1
3	11039351	CRANK SHAFT ASM.	FOR USE IN JAPAN			1
4	11017357	THREAD TAKE-UP CRANK SHAFT ASM				1
5	SL4051001MZ	SCREW M5 L=9.6				2
6	11039203	FELT	FOR USE IN JAPAN			1
7	HX000430000	CLIP				1
8	11039070	THREAD TAKE-UP LEVER ASM.				1
9	11039062	THREAD TAKE-UP LEVER ASM.		*		1
10	B1905541B00	NEEDLE BEARING	SELECTIVE PART(A~D)	*		2
11	11005204	NEEDLE BAR CRANK		*		1
12	B1408552000	NEEDLE BAR CRANK ROD		*		1
13	B1903552000	LEFT SCREW		*		1
14	22919203	OIL PROTECTING RUBBER				1
15	22903157	COUNTER WEIGHT ASM.				1
16	SS8681650TP	SCREW 9/32-28 L=16		*		1
17	SS8660610TP	SCREW 1/4-40 L=6		*		2
18	RO044240100	RUBBER RING		*		1
19	SS7681650TP	SCREW 9/32-28 L=16		*		1
20	22903108	COUNTER WEIGHT		*		1
21	22903207	MAIN SHAFT BUSHING, FRONT				1
22	B1215552000	OIL ADJUSTING COLLAR				1
23	22903306	BUSHING,INTERMEDIATE				1
24	22910053	FEED DRIVE ECCENTRIC CAM ASM.				1
25	SS6661110SP	SCREW 1/4-40 L=11		*		2
26	22910004	FEED DRIVE ECCENTRIC CAM		*		1
27	22910103	THRUST COLLAR				1
28	SS4090615SP	SCREW 9/64-40 L=6				2
29	11002409	MAIN SHAFT BUSHING, REAR				1
30	11002508	OIL SEAL				1
31	RC1850001KP	SNAP RING 18.5				1
32	22904155	MAIN SHAFT THRUST COLLAR ASM.				1
33	SS8660610TP	SCREW 1/4-40 L=6		*		2
34	11416963	HAND WHEEL ASM.				1
35	WP0450801SD	WASHER 4.5X10X0.8		*		2
36	SS8151550SP	SCREW 15/64-28 L=15		*		2
37	11416955	HAND WHEEL ASM.		*		1
38	M40071100AA	MAGNET FITTING BASE A ASM.		*		1
39	M40071100AB	MAGNET FITTING BASE B ASM.		*		1
40	SS6111210SP	SCREW 11/64-40 L=12		*		2
41	22937965	DYNAMO STATOR ASM.				1
42	22903900	ADJUSTING PIN				1
43	RO029180100	RUBBER RING				1
44	11002904	ROLLER FELT				1

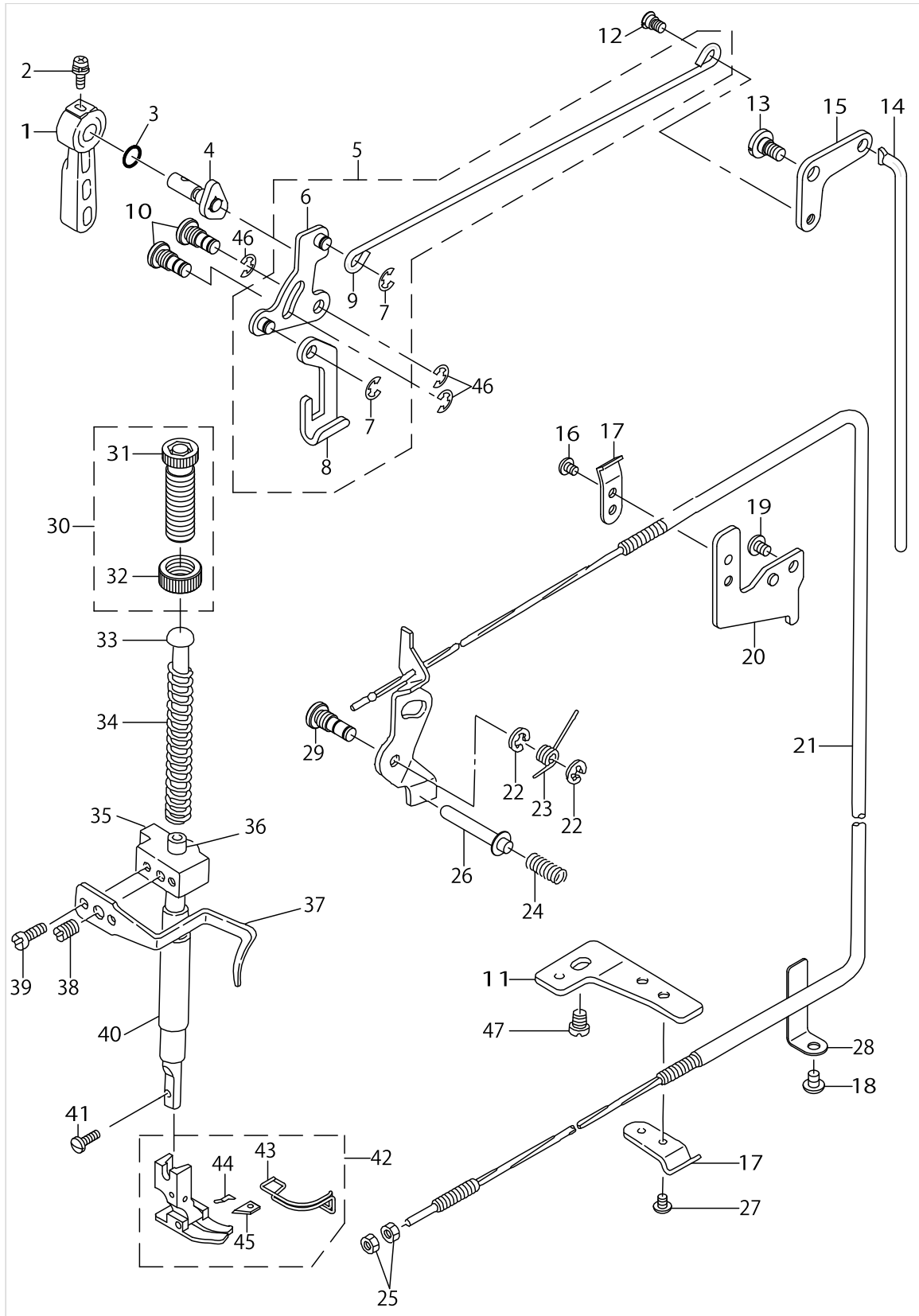
NEEDLE BAR , HOOK DRIVING SHAFT & UPRIGHT SHAFT COMPONENTS



NEEDLE BAR , HOOK DRIVING SHAFT & UPRIGHT SHAFT COMPONENTS

No.	Parts No.	Parts name	Remarks	Level	Cons	Qty
1	22901409	NEEDLE BAR UPPER BUSH CAP				1
2	B1402552000A	NEEDLE BAR BUSHING, UPPER				1
3	11417102	NEEDLE BAR A				1
4	22906457	NEEDLE BAR HOLDER ASM.				1
5	SS6090670TP	SCREW 9/64-40 L=6		*		1
6	B1414555000	SLIDE BLOCK				1
7	22920805	NEEDLE BAR THREAD GUIDE				1
8	22906200	NEEDLE BAR BUSHING, LOWER				1
9	SS7080510TP	SCREW 1/8-44 L=4.5				1
10	22906309	NEEDLE BAR THREAD GUIDE				1
11	MDB100B1100	NEEDLE DBX1 #11				1
12	B13061550C0	GEAR & PINION ASM.				1
13	B13061550B0	GEAR & PINION ASM., UPPER		*		1
14	B13050120A0	GEAR ASM.		*		1
15	SS8660810TP	SCREW 1/4-40 L=8		*		2
16	B13061550A0	PINION ASM.		*		1
17	SS8660810TP	SCREW 1/4-40 L=8		*		2
18	B13071550B0	GEAR & PINION ASM., LOWER		*		1
19	B13071550A0	GEAR ASM. LARGE		*		1
20	SS8660810TP	SCREW 1/4-40 L=8		*		2
21	B13081550A0	PINION ASM.		*		1
22	SS8660810TP	SCREW 1/4-40 L=8		*		2
23	22905004	UPRIGHT SHAFT				1
24	11038650	HOOK ASM.	FOR USE IN JAPAN			1
25	22905103	UPRIGHT SHAFT BUSHING, UPPER				1
26	11004207	UPRIGHT SHAFT BUSHING, LOWER				1
27	22916308	HOOK DRIVING SHAFT BUSH, REAR				1
28	MC200500750	NEEDLE 134 NM75	FOR JE			1
29	CS079101ASH	THRUST COLLAR ASM. D=7.94 W=10				1
30	SS6110420TP	SCREW 11/64-40 L=4.8		*		2
31	22916001	HOOK DRIVING SHAFT				1
32	11038809	BOBBIN CASE HOLDER				1
33	SS4110915TP	SCREW 11/64-40 L=9				1
34	MDP500B1400	NEEDLE DPX5 #14	FOR JO			1
35	11418308	MAIN SHAFT BUSHING				1
36	CS079073ASH	THRUST COLLAR ASM.				1
37	SS8110410TP	SCREW 11/64-40 L= 3.5		*		2
38	22916555	OIL SEAL SCREW ASM.				1
39	11015906	OIL WICK		*		1
40	B1808552000	OIL SEAL SCREW				1
41	22932909	BOBBIN				1
42	11038759	BOBBIN CASE ASM.				1
43	11422607	OIL SHIELD				1
44	11422508	OIL SHIELD, A				1
45	11417201	NEEDLE BAR B	FOR JE & JO			1
46	11141355	HOOK ASM.				1
47	SS4120915SP	SCREW 3/16-28 L=9				1

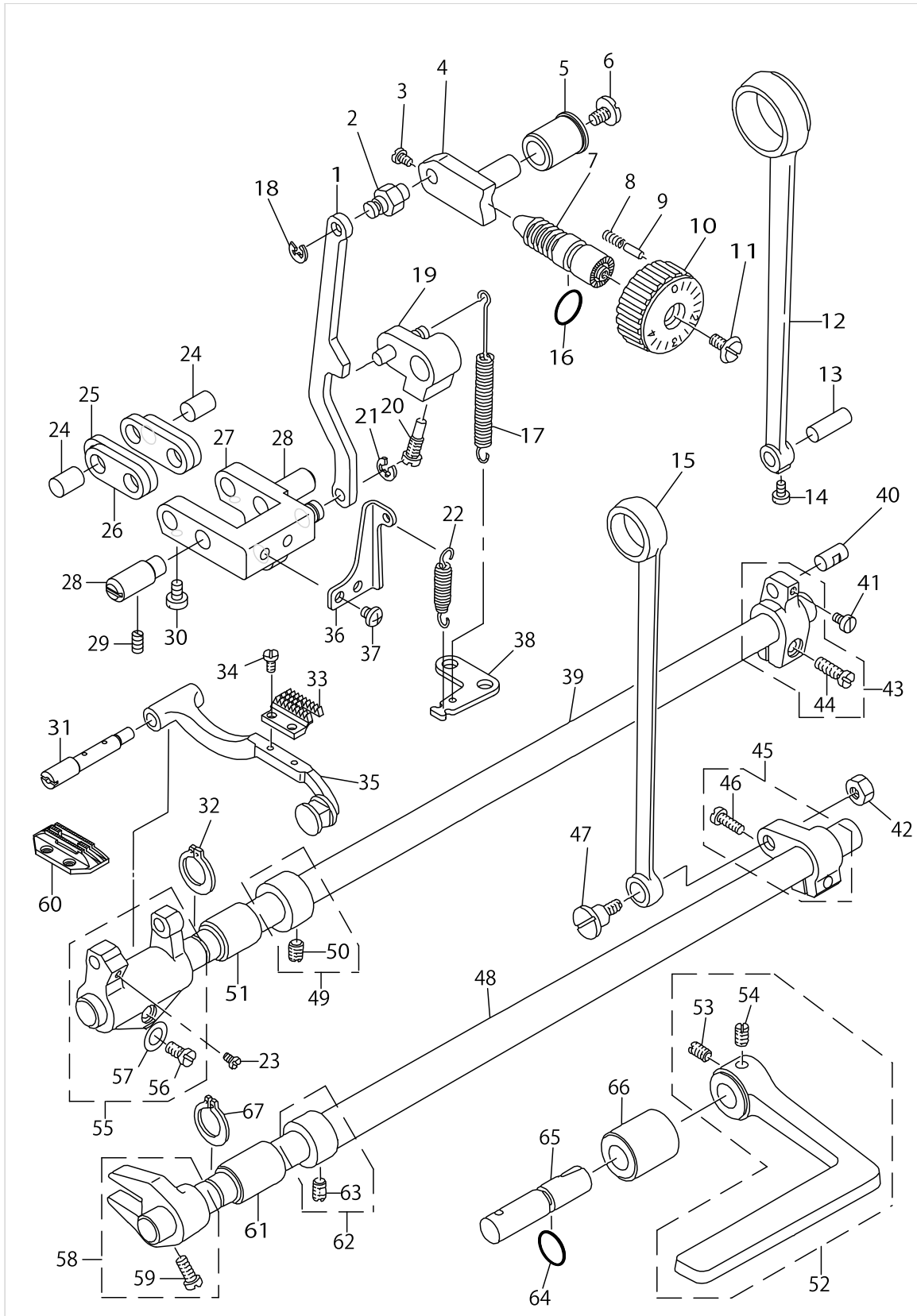
HAND LIFTER COMPONENTS



HAND LIFTER COMPONENTS

No.	Parts No.	Parts name	Remarks	Level	Cons	Qty
1	22907802	HAND LIFTER				1
2	B1521555000	SCREW				1
3	RO037180100	RUBBER RING				1
4	22908552	HAND LIFTER CAM ASM.				1
5	22908354	KNEE LIFTING CROSS ROD ASM.				1
6	22908156	LIFTING LINK ASM.		*		1
7	RE0500000K0	E-RING		*		2
8	22908008	LIFTING PLATE		*		1
9	22908305	KNEE LIFTER SIDE ROD		*		1
10	22908701	LINK SHAFT				2
11	22944706	WIRE PRESSER BASE, LOWER				1
12	22908909	HINGE SCREW				1
13	SD0720331SP	HINGE SCREW D= 7.24 H= 3.3				1
14	22909006	KNEE LIFTER CONNECTING ROD				1
15	22908800	KNEE LIFTER LINK				1
16	SS4110515SP	SCREW 11/64-40 L=5				1
17	22944508	WIRE PRESSER A				2
18	SS4120615SP	SCREW 3/16-28 L=6				1
19	SS4120615SP	SCREW 3/16-28 L=6				1
20	22944607	WIRE PRESSER BASE, UPPER				1
21	11045952	THREAD TENSION RELEASE WIRE				1
22	RE0500000K0	E-RING				2
23	11018207	TENSION RELEASE RETURN SPRING				1
24	22920409	THREAD RELEASE PIN SPRING				1
25	NS6620310SP	NUT 3/16-32				2
26	22920300	THREAD RELEASE SUPPORTING PIN				1
27	SS4110515SP	SCREW 11/64-40 L=5				1
28	22945109	WIRE CABLE SUPPORT				1
29	22920102	TENSION RELEASE SHAFT				1
30	22907554	PRESSER SPRING REG NUT ASM.				1
31	22907505	PRESSER SPRING REGULATOR		*		1
32	22907604	PRESSER SPRING REGULATOR NUT		*		1
33	22907703	PRESSER GUIDE BAR				1
34	22907406	PRESSER SPRING				1
35	11006004	PRESSER BAR GUIDE BRACKET				1
36	40017805	PRESSER BAR				1
37	22907307	THREAD GUIDE				1
38	SS8660810TP	SCREW 1/4-40 L=8				1
39	SS6090910SP	SCREW 9/64-40 L=9				2
40	40060989	PRESSER BAR BUSHING LOWER				1
41	SS7091110TP	SCREW 9/64-40 L=10.5				1
42	11434065	PRESSER FOOT ASM.				1
43	D1421555B00	FINGER GUARD		*		1
44	11434313	FIXING SPRING		*		1
45	11434206	THREAD CUTTER KNIFE		*		1
46	RE0500000K0	E-RING				3
47	SS4150915SP	SCREW 15/64-28 L=9				1

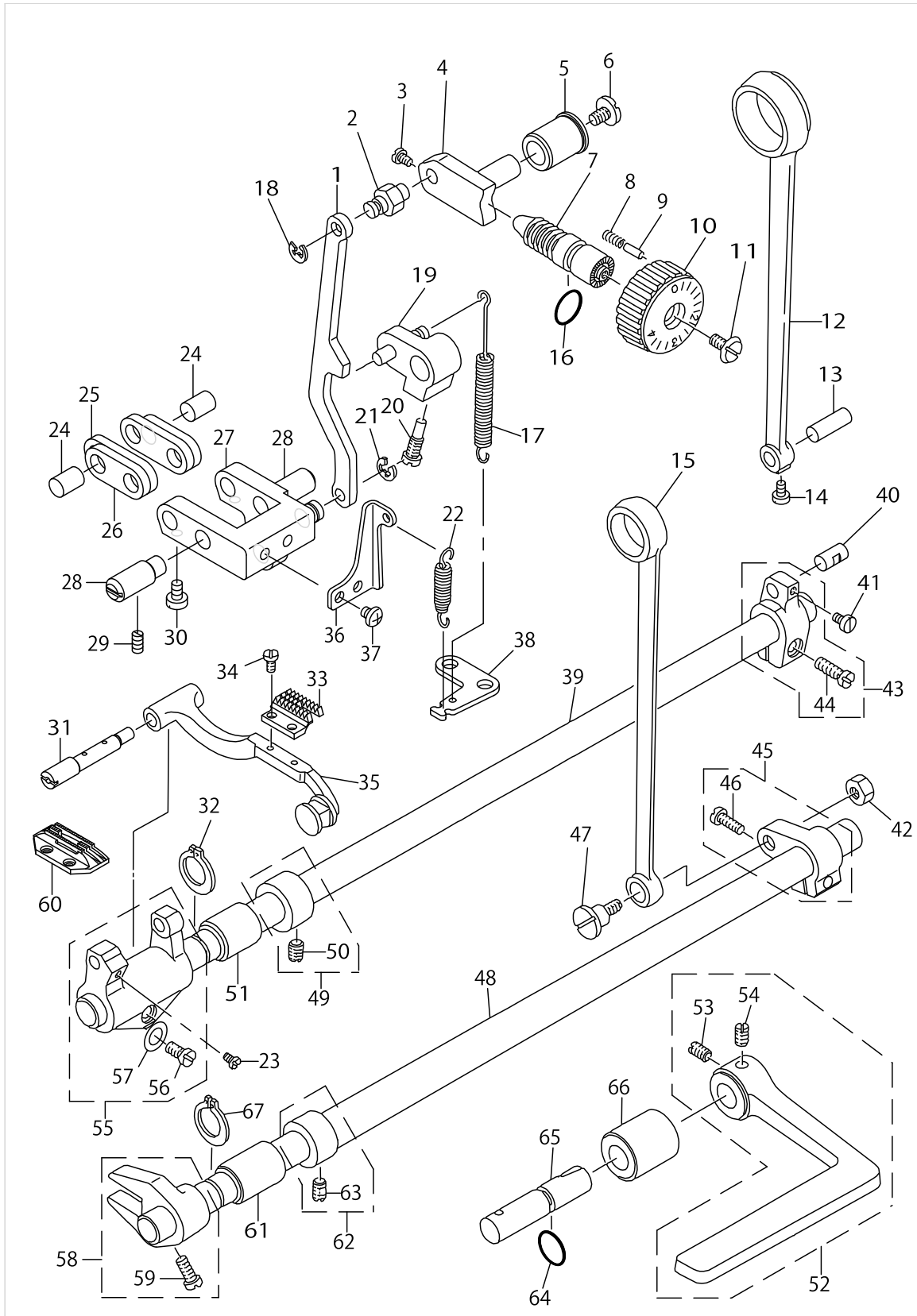
FEED MECHANISM COMPONENTS



FEED MECHANISM COMPONENTS

No.	Parts No.	Parts name	Remarks	Level	Cons	Qty
1	22941108	FEED ADJUST ROD				1
2	22911507	WALKING FOOT PIN C				1
3	SS6090670TP	SCREW 9/64-40 L=6				2
4	22911606	FEED REGULATOR				1
5	11009800	FEED REGULATOR BUSHING				1
6	SS7120770SH	SCREW 3/16-28 L=7				1
7	22911804	FEED REGULATOR SCREW				1
8	22912109	FEED REGULATOR PIN SPRING				1
9	22912000	FEED REGULATOR PIN				1
10	22940506	FEED DIAL				1
11	SS6121860SP	SCREW 3/16-28 L=18				1
12	11008208	ROCKER SHAFT CONNECTING ROD				1
13	22911101	WALKING FOOT PIN C				1
14	SS6090620TP	SCREW				1
15	11014008	CONNECTING ROD				1
16	RO092270200	RUBBER RING				1
17	11010303	FEED REVERSE SPRING				1
18	RE0500000K0	E-RING				1
19	11010154	FEED REVERSE ARM ASM.				1
20	11010410	FEED REVERSE ARM SCREW				1
21	RE0500000K0	E-RING				1
22	11037405	SPRING				1
23	SS7110740TP	SCREW 11/64-40 L=7				1
24	22910905	WALKING FOOT PIN A				2
25	11008703	WALKING FOOT LINK				2
26	11008604	CONNECTING LINK A				2
27	22940951	FEED ADJUST LINK ASM.				1
28	22910806	ADJUST LINK FULCRUM SHAFT A				2
29	SS8150710TP	SCREW 15/64-28 L=7				2
30	SS6090620TP	SCREW				2
31	22940803	FEED BAR SHAFT				1
32	RC0150001KP	RETAINING RING 13.8				1
33	11417714	FEED DOG A	FOR DDL-5556NC-7			1
34	SS4080620TP	SCREW 1/8-44 L=6				2
35	22940753	FEED BAR ASM.				1
36	22941306	REGULATOR LINK SPRING HOOK				1
37	SS4110515SP	SCREW 11/64-40 L=5				2
38	22913701	FEED SPRING HOOK				1
39	22912901	FEED ROCKER SHAFT				1
40	22911002	WALKING FOOT PIN B				1
41	SS6090620TP	SCREW				1
42	NS6680410SP	NUT 9/32-28				1
43	22910350	FEED ROCKER SHAFT CRANK ASM.				1
44	SS6121610SP	SCREW 3/16-28 L=15.5		*		1
45	22915151	FEED ARM COMPL.				1
46	SS7121610SP	SCREW 3/16-28 L=15.5		*		1
47	SD1000801SH	HINGE SCREW D=10 H=8				1

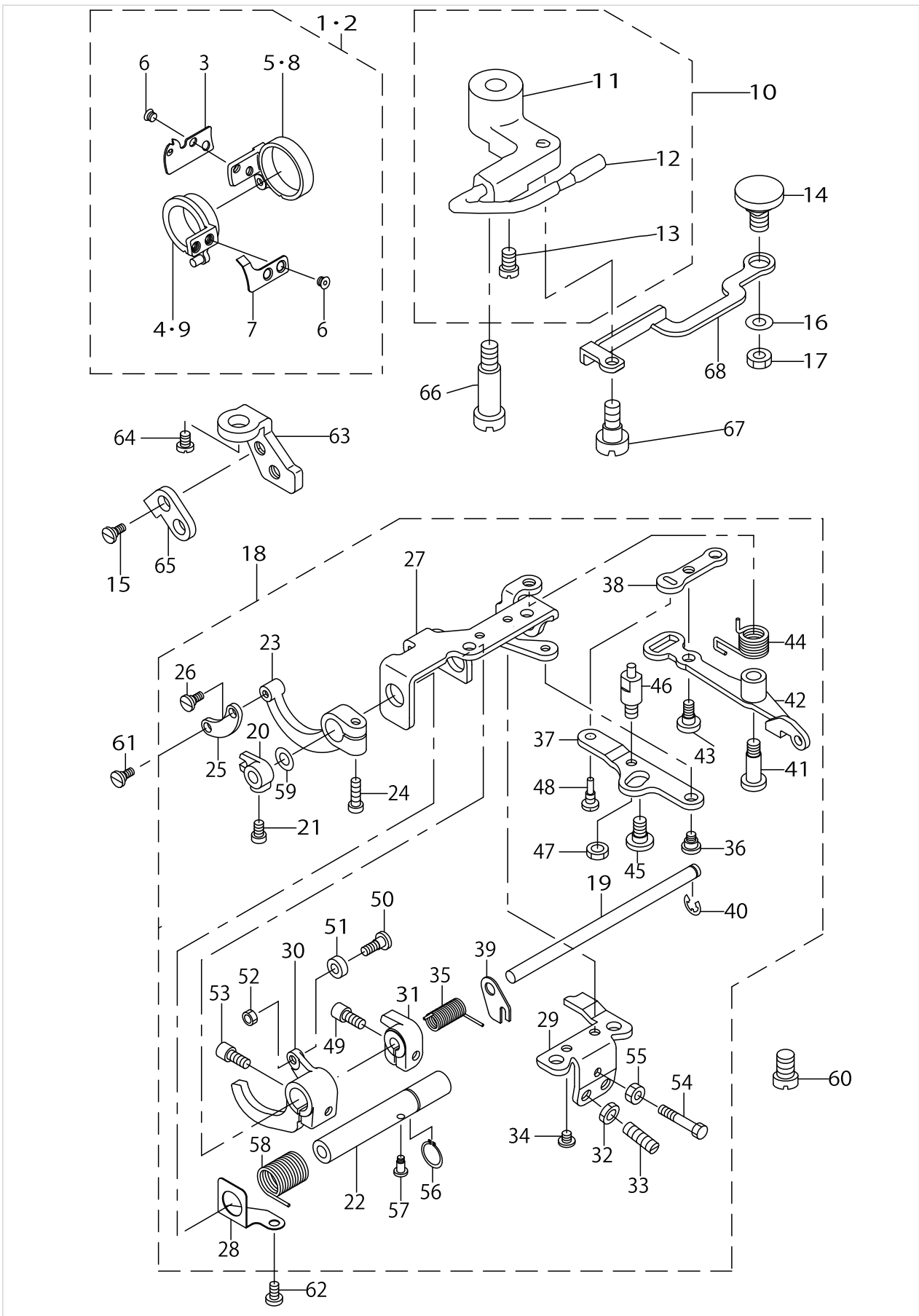
FEED MECHANISM COMPONENTS



FEED MECHANISM COMPONENTS

No.	Parts No.	Parts name	Remarks	Level	Cons	Qty
48	22915201	FEED DRIVING SHAFT				1
49	22904155	MAIN SHAFT THRUST COLLAR ASM.				1
50	SS8660610TP	SCREW 1/4-40 L=6		*		2
51	22913008	FEED ROCKER SHAFT BUSHING				1
52	22912752	FEED LEVER ASM.				1
53	SM8061010TP	SCREW		*		1
54	SM8061050TP	SCREW		*		1
55	22940654	FEED ROCKER ASM.				1
56	SS7121410TP	SCREW 3/16-28 L=14		*		1
57	WP0480856SP	WASHER 4.8X8.4X0.8		*		1
58	22915359	DRIVING SHAFT CRANK ASM.				1
59	SS7111120SP	SCREW 11/64-40 L=10.5		*		1
60	B1613012I00	FEED DOG I	FOR EXPORT & DDL-5556ND-7			1
61	11010907	FEED ROCKER SHAFT BUSHING				1
62	22904155	MAIN SHAFT THRUST COLLAR ASM.				1
63	SS8660610TP	SCREW 1/4-40 L=6		*		2
64	RO078190100	RUBBER RING				1
65	22912604	FEED REVERSE SHAFT				1
66	11010709	FEED LEVER METAL				1
67	RC0150001KP	RETAINING RING 13.8				1

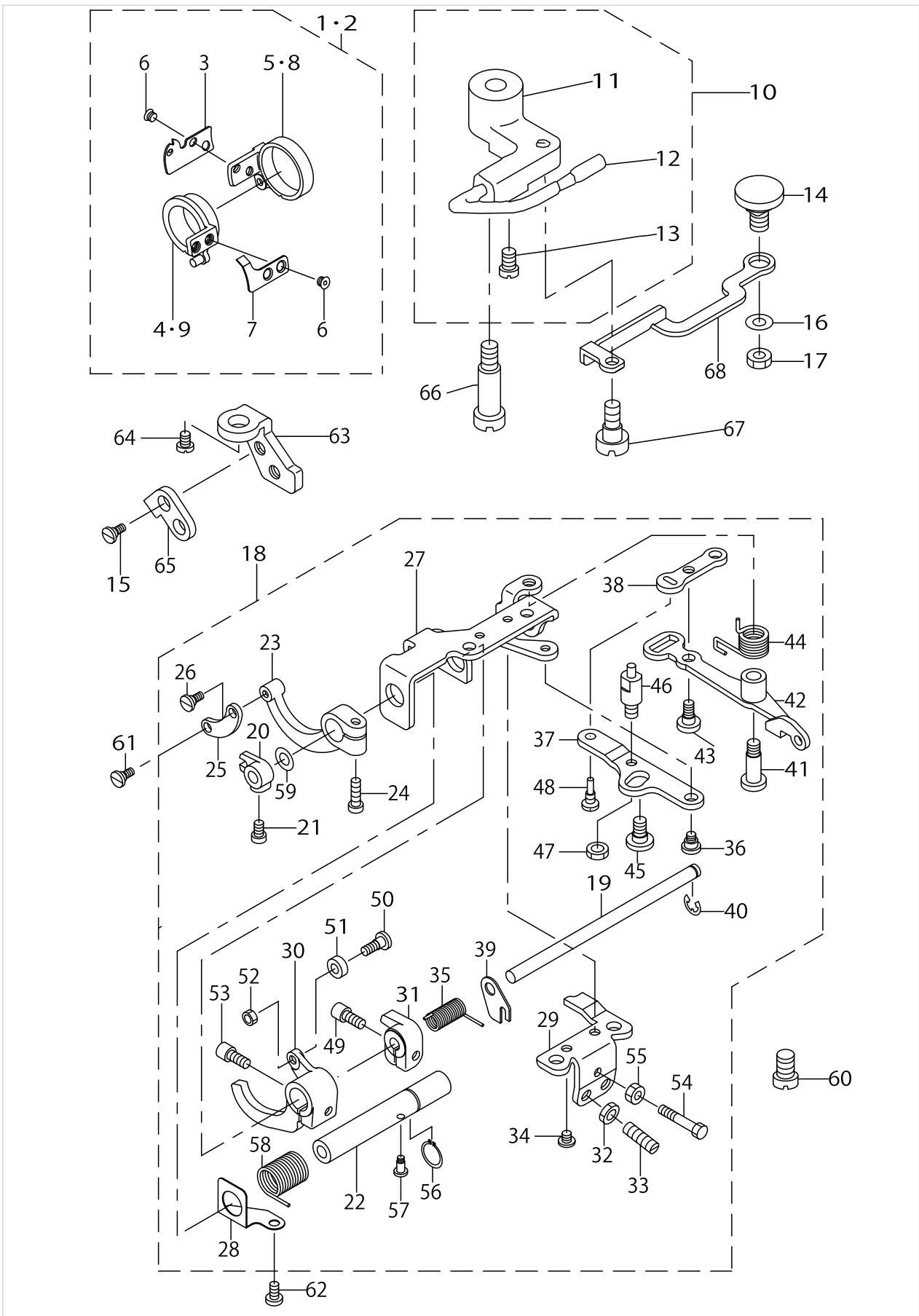
THREAD TRIMMER COMPONENTS (1)



THREAD TRIMMER COMPONENTS (1)

No.	Parts No.	Parts name	Remarks	Level	Cons	Qty
1	11420155	KNIFE UNIT	FOR EXPORT			1
2	11497153	KNIFE UNIT	FOR DDL-5556NC-7,DDL-5556ND-7			1
3	11420205	LOOP SPREADING KNIFE		*		1
4	11420353	KNIFE BASE ASM.		*		1
5	11420502	LOOP SPREADING BASE		*		1
6	11420601	SCREW		*		4
7	11420106	THREAD CUTTER KNIFE		*		1
8	11497104	THREAD SPREADING BASE	FOR DDL-5556NC-7,DDL-5556ND-7	*		1
9	11497054	KNIFE BASE ASM.	FOR DDL-5556NC-7,DDL-5556ND-7	*		1
10	11422250	PICKER ARM				1
11	11422201	PICKER ARM		*		1
12	22950356	HOOK THREAD PRESSER ASM.		*		1
13	SS6090510TP	SCREW 9/64-40 L= 5.0		*		2
14	22950000	PICKER LINK PIN				1
15	SS4090515SP	SCREW 9/64-40 L=5				2
16	WP0621016SH	WASHER				1
17	NS6150430SP	NUT 15/64-28				1
18	11420759	THREAD CUTTER DRIVING UNIT				1
19	11420700	THREAD CUTTER KNIFE SHAFT		*		1
20	11421500	KNIFE DRIVING ARM		*		1
21	SS7110740TP	SCREW 11/64-40 L=7		*		1
22	11420809	LOOP SPREADING SHAFT		*		1
23	11421302	LOOP SPREADING ARM		*		1
24	SS7111410TP	SCREW 11/64-40 L=14		*		1
25	11421401	LOOP SPREADING CONNECTING LINK		*		1
26	SD0500251SP	HINGE SCREW D= 5 H= 2.5		*		1
27	11420908	BASE PLATE		*		1
28	11421807	GREASE RETAINING PLATE		*		1
29	11421005	STOPPER PLATE		*		1
30	11421104	LOOP SPREADING ARM		*		1
31	11421203	KNIFE DRIVING STITCH TONGUE		*		1
32	NS6110430SP	NUT 11/64-40		*		2
33	SS8152030SP	SCREW 15/64-28 L=20		*		2
34	SS6110480SP	SCREW 11/64-40 L=4.3		*		2
35	D2423530D00	SPRING		*		1
36	SD0640321TP	HINGE SCREW D=6.35 H=3.2		*		1
37	11421906	CLUTCH PLATE		*		1
38	11422102	CLUTCH LINK		*		1
39	11421708	SPRING HOOK		*		1
40	RE0500000K0	E-RING		*		1
41	SD0701511TP	HING SCREW D=7 H=15.1		*		1
42	11422052	TENSION RELEASING LEVER ASM.		*		1
43	SD0600361SP	HINGE SCREW D=6 H=3.6		*		1
44	11353505	SPRING		*		1
45	SD0720331SP	HINGE SCREW D= 7.24 H= 3.3		*		1
46	D2420530D00	CLUTCH DRIVING PIN		*		1
47	NS6150310SP	NUT 15/64-28		*		1

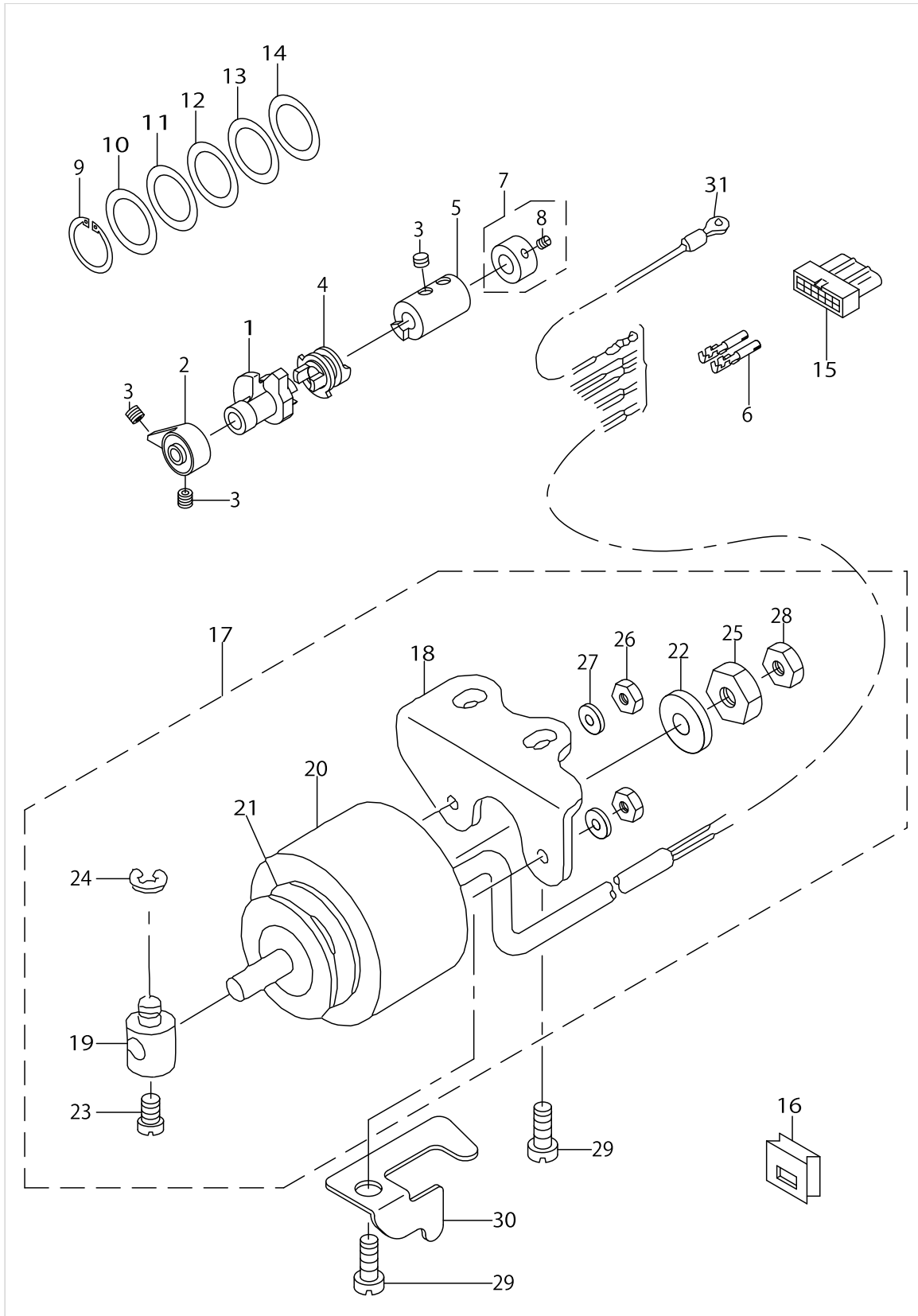
THREAD TRIMMER COMPONENTS (1)



THREAD TRIMMER COMPONENTS (1)

No.	Parts No.	Parts name	Remarks	Level	Cons	Qty
48	11352804	SCREW PIN, B		*		1
49	SS6621212TP	SCREW 3/16-32 L=12.0		*		1
50	SD0500402SP	HINGE SCREW D= 5 H= 4		*		1
51	D2422530D00	CAM ROLLER		*		1
52	NS6110310SP	NUT 11/64-40		*		1
53	SS6621212TP	SCREW 3/16-32 L=12.0		*		1
54	SS9112420TP	SCREW 11/64-40 L=24		*		1
55	NS6110420SP	NUT 11/64-40		*		1
56	RC1200001KP	C-SHAPED SNAP RING		*		1
57	SD0380551SL	HINGE SCREW D= 3.80 H= 5.5		*		1
58	11421609	LOOP SPREAD SPRING		*		1
59	WP0651056SH	WASHER 6.5X11X1		*		1
60	SS9151120CP	SCREW 15/64-28 L=11				2
61	SD0500251SP	HINGE SCREW D= 5 H= 2.5				1
62	SS7110840SP	SCREW 11/64-40 L=7.8				1
63	11422805	STOPPER BASE				1
64	SS4110715SP	SCREW 11/64-40 L=7				1
65	11422904	STOPPER PLATE				1
66	SD0641452TP	HINGE SCREW D=6.35 H=14.5				1
67	SD0630275SP	HINGE SCREW D= 6.35 H= 2.7				1
68	11420007	PICKER LINK				1

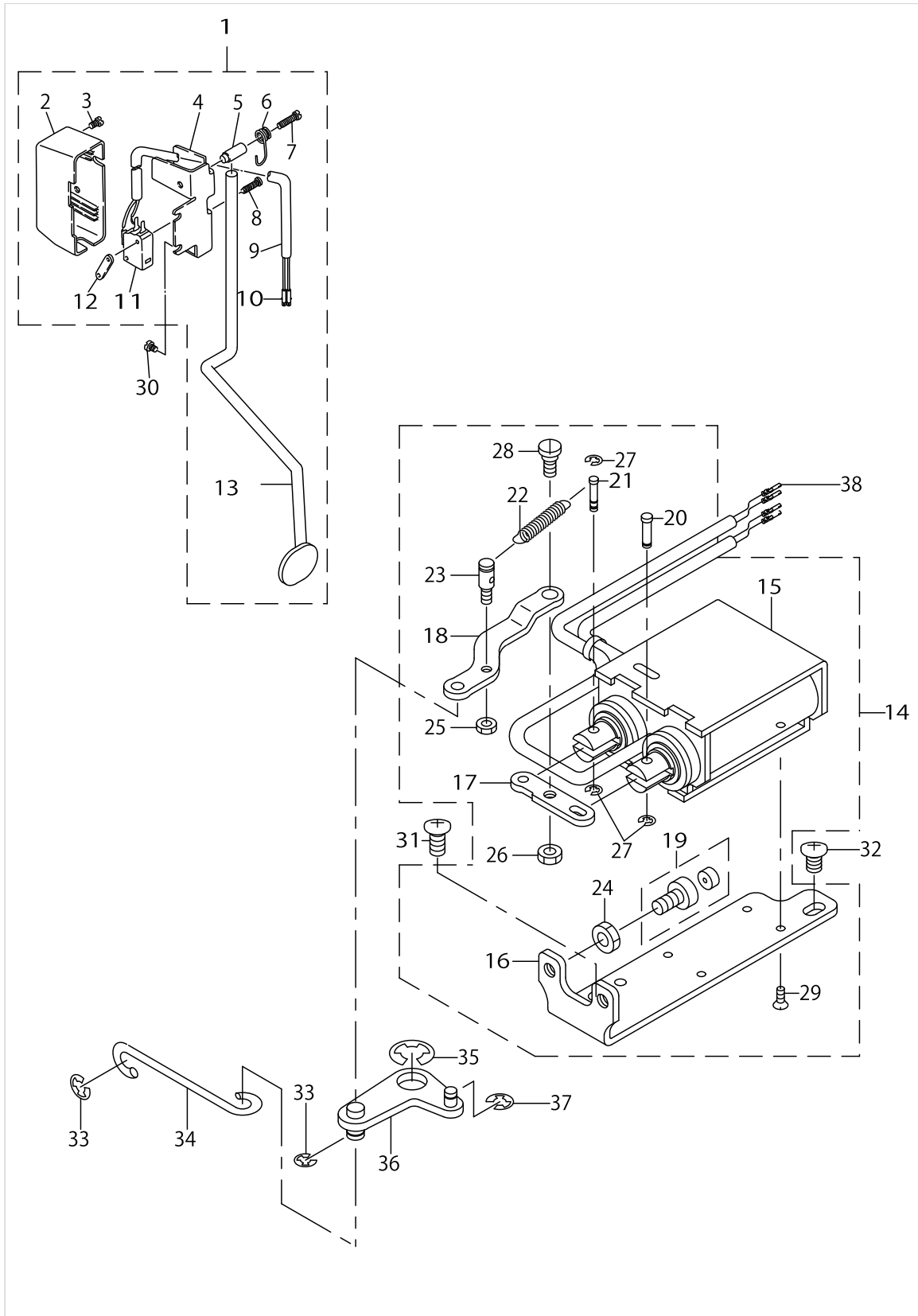
THREAD TRIMMER COMPONENTS (2)



THREAD TRIMMER COMPONENTS (2)

No.	Parts No.	Parts name	Remarks	Level	Cons	Qty
1	11419108	THREAD CUTTER CAM				1
2	11419405	SAFETY CAM				1
3	SS8660612TP	SCREW 1/4-40 L=6				4
4	11419306	CLUTCH				1
5	11419207	THREAD CUTTER DRIVING COLLAR				1
6	HK03464000B	PIN CONTACT				2
7	22950950	CAM COLLAR ASM.				1
8	SS8110520TP	SCREW 11/64-40 L= 4.5		*		1
9	RC2651218KP	RETAINING RING				1
10	11419603	THRUST COLLAR, B	SELECTIVE PARTS			1
11	11419504	THRUST COLLAR, A	SELECTIVE PARTS			1
12	11419702	THRUST COLLAR, C	SELECTIVE PARTS			1
13	11419801	THRUST COLLAR, D	SELECTIVE PARTS			1
14	11419900	THRUST COLLAR, E	SELECTIVE PARTS			1
15	HK034610140	HOUSING 14P				1
16	11345600	OIL RUBBER				1
17	11496353	SOLENOID UNIT				1
18	11422300	SOLENOID BASE		*		1
19	22951008	SOLENOID PIN		*		1
20	11043908	THREAD TRIMMER SOLENOID		*		1
21	11043205	SOLENOID RUBBER A		*		1
22	11043304	SOLENOID RUBBER		*		1
23	SS6110710TP	SCREW 11/64-40 L= 6.5		*		1
24	RE0500000K0	E-RING		*		1
25	NS6660410SH	NUT		*		1
26	NM6040000SN	NUT M4		*		2
27	WP0450000SD	WASHER 4.5X8X0.5		*		2
28	NS6660430SP	NUT 1/4-40		*		1
29	SS4151215SP	SCREW 15/64-28 L=12				2
30	22962708	TUBE HOLDER, LOWER				1
31	22951552	GROUND WIRE ASM.				1

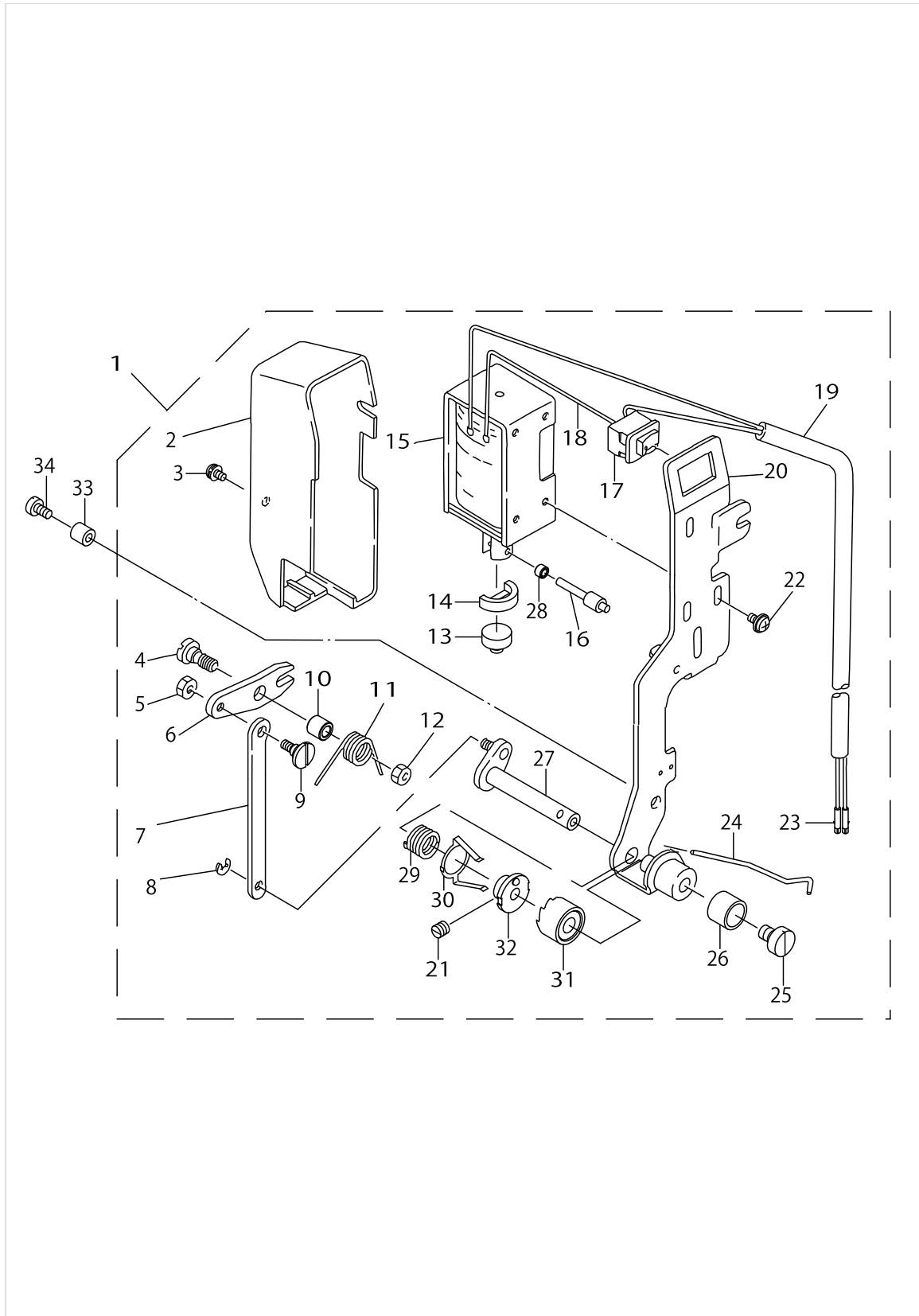
AUTOMATIC REVERSE FEED COMPONENTS



AUTOMATIC REVERSE FEED COMPONENTS

No.	Parts No.	Parts name	Remarks	Level	Cons	Qty
1	11496551	REVERSE FEED SWITCH ASM.				1
2	22954606	REVERSE FEED SWITCH COVER		*		1
3	SM4040655SP	SCREW M4 L=6		*		1
4	22954101	REVERSE FEED SWITCH BASE		*		1
5	22954200	REVERSE FEED SWITCH SHAFT		*		1
6	22954309	REVERSE FEED SWITCH SPRING		*		1
7	SM4041655SP	SCREW M4 L=16		*		1
8	SM4031501SC	SCREW M3 L=15		*		2
9	HW500070000	2-CORE CABTYRE CORD		*		1.4
10	HK03464000B	PIN CONTACT		*		2
11	HA001900000	MICROSWITCH		*		1
12	11102308	MICRO SWITCH PLATE		*		1
13	11424652	REVERSE FEED SWITCH LEVER ASM.		*		1
14	11496460	TWIN SOLENOID UNIT				1
15	11496452	TWIN SOLENOID ASM.		*		1
16	11423605	TWIN SOLENOID BRACKET		*		1
17	11423704	PLUNGER LINK		*		1
18	11423803	CONNECTOR LINK		*		1
19	11423951	LIMITER ASM.		*		1
20	11424009	PLUNGER PIN		*		1
21	11424108	PLUNGER PIN, LEFT		*		1
22	11424306	LOCK SPRING		*		1
23	11424405	LOCK SPRING HOOK		*		1
24	NM6060003SC	NUT M6		*		1
25	NM6040003SC	NUT M4		*		1
26	NS6620310SP	NUT 3/16-32		*		1
27	RE0300000KP	E-RING		*		3
28	SD0640323TP	HINGE SCREW D= 6.35 H= 3.2		*		1
29	SM1030601SA	SCREW M3 L=6		*		4
30	SS4120915SP	SCREW 3/16-28 L=9				1
31	SS4151215SP	SCREW 15/64-28 L=12				1
32	SS4150915SP	SCREW 15/64-28 L=9				1
33	RE0500000KP	E-RING 5				2
34	11101300	REVERSE FEED CONNECTING SHAFT				1
35	RE0900000K0	E-RING 9				1
36	22953657	AUTO-BACK ARM ASM.				1
37	RE0400000KP	E-RING 4				1
38	HK03464000B	PIN CONTACT				4

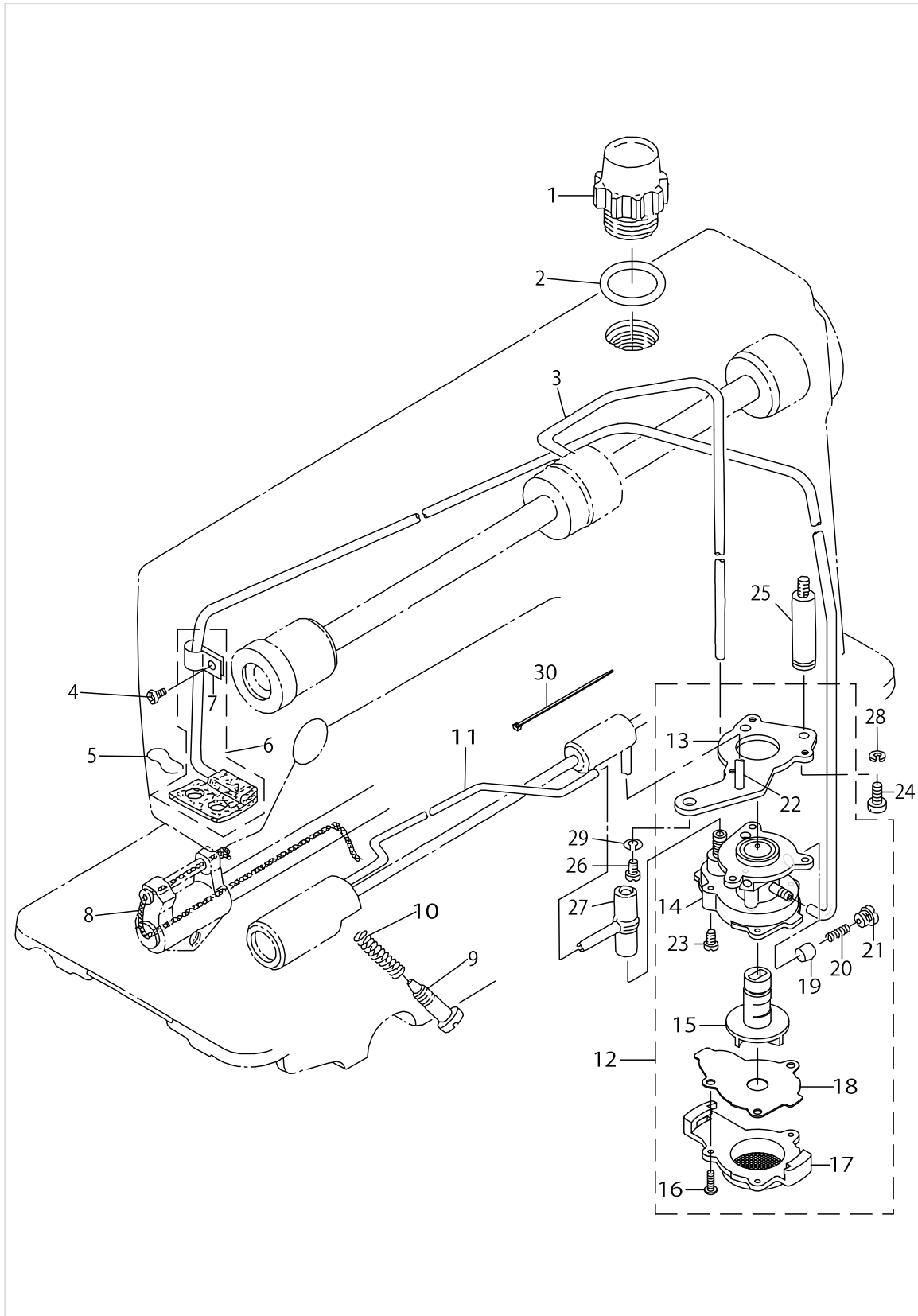
WIPER COMPONENTS



WIPER COMPONENTS

No.	Parts No.	Parts name	Remarks	Level	Cons	Qty
1	11496650	WIPER ASM.				1
2	11425907	WIPER COVER		*		1
3	SL4030631SC	SCREW M3X6		*		1
4	SD0650321TP	HINGE SCREW D=6.5 H=3.2		*		1
5	NS6090310SP	NUT 9/64-40		*		1
6	22956106	WIPER LINK A		*		1
7	11425204	WIPER LINK, B		*		1
8	RE0250000K0	E-RING 2.5		*		1
9	22956908	WIPER LINK B HINGE SCREW		*		1
10	22956205	WIPER HINGE SCREW COLLAR		*		1
11	22956304	WIPER SPRING		*		1
12	NS6110310SP	NUT 11/64-40		*		1
13	22955900	WIPER RUBBER A		*		1
14	22956007	WIPER RUBBER B		*		1
15	11110301	WIPER SOLENOID		*		1
16	22957104	WIPER SOLENOID SHAFT		*		1
17	HA006000000	SWITCH		*		1
18	HW200390000	ELECTRIC WIRE		*		0.04
19	HW500070000	2-CORE CABTYRE CORD		*		1.33
20	11425055	WIPER BASE ASM.		*		1
21	SS8080310TP	SCREW 1/8-44 L=2.8		*		2
22	SL4030641SE	SCREW		*		3
23	HK03464000B	PIN CONTACT		*		2
24	11424801	WIPER		*		1
25	SS6090540SP	SCREW 9/64-40 L= 5.0		*		1
26	22956809	WIPER COLLAR		*		1
27	11424959	WIPER SHAFT ASM.		*		1
28	22957203	WIPER LINK COLLAR		*		1
29	11429107	SLIDE SPRING		*		1
30	11422706	STOPPER SPRING, B		*		1
31	11425659	RATCHET ASM.		*		1
32	11425451	FOLLOWER ASM.		*		1
33	D2121555D00	BRACKET INSTALLING COLLAR				1
34	SS6121840SP	SCREW 3/16-28 L=18				1

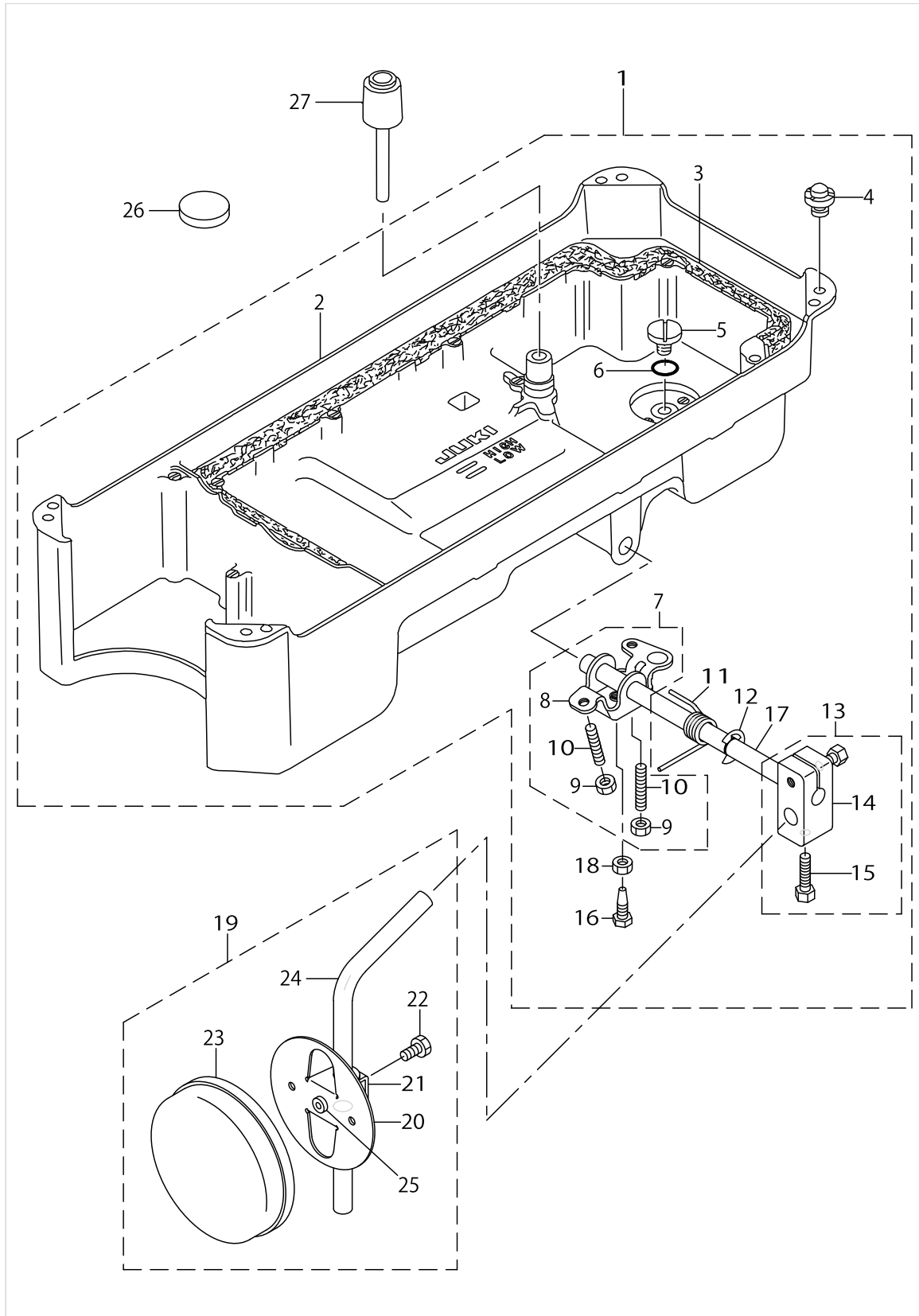
OIL LUBRICATION COMPONENTS



OIL LUBRICATION COMPONENTS

No.	Parts No.	Parts name	Remarks	Level	Cons	Qty
1	22947006	OIL SIGHT WINDOW				1
2	RO195240100	RUBBER RING				1
3	22924401	MAIN SHAFT OIL TUBE				1
4	SS4120615SP	SCREW 3/16-28 L=6				1
5	22925101	OIL FELT PRESSER				1
6	22924153	RETURN PIPE ASM.				1
7	22924302	RETURN PIPE HOLDER		*		1
8	CQ252000000	OIL WICK				0.3
9	22925002	OIL REGULATOR SCREW				1
10	22924906	OIL REGULATOR SCREW SPRING				1
11	11094109	OIL TUBE				1
12	11418852	LUBRICATING OIL PUMP ASM.				1
13	11418803	ADJUSTING PLATE		*		1
14	22923015	OIL PUMP		*		1
15	22923700	IMPELLER		*		1
16	SE4301041SR	SCREW D=3 L=10		*		3
17	22923205	PUMP BODY COVER		*		1
18	22923809	PUMP BODY SUPPORT PLATE		*		1
19	22923403	PLUNGER		*		1
20	22923601	PLUNGER SPRING		*		1
21	22923502	PLUNGER SCREW		*		1
22	22923908	HOOK DRIVING SHAFT OILING PIPE		*		1
23	SL4030851SF	SCREW M3 L=8		*		3
24	SS6111010TP	SCREW 11/64-40 L= 9.5				1
25	22947105	PUMP BODY STRUT				1
26	SS4150915SP	SCREW 15/64-28 L=9				1
27	22924609	RUBBER JOINT				1
28	WS0451040KP	SPRING WASHER 4.5X8.5X1				1
29	WS0651310KP	SPRING WASHER 6.5X11X1.3				1
30	EA9500B0100	CABLE BAND				1

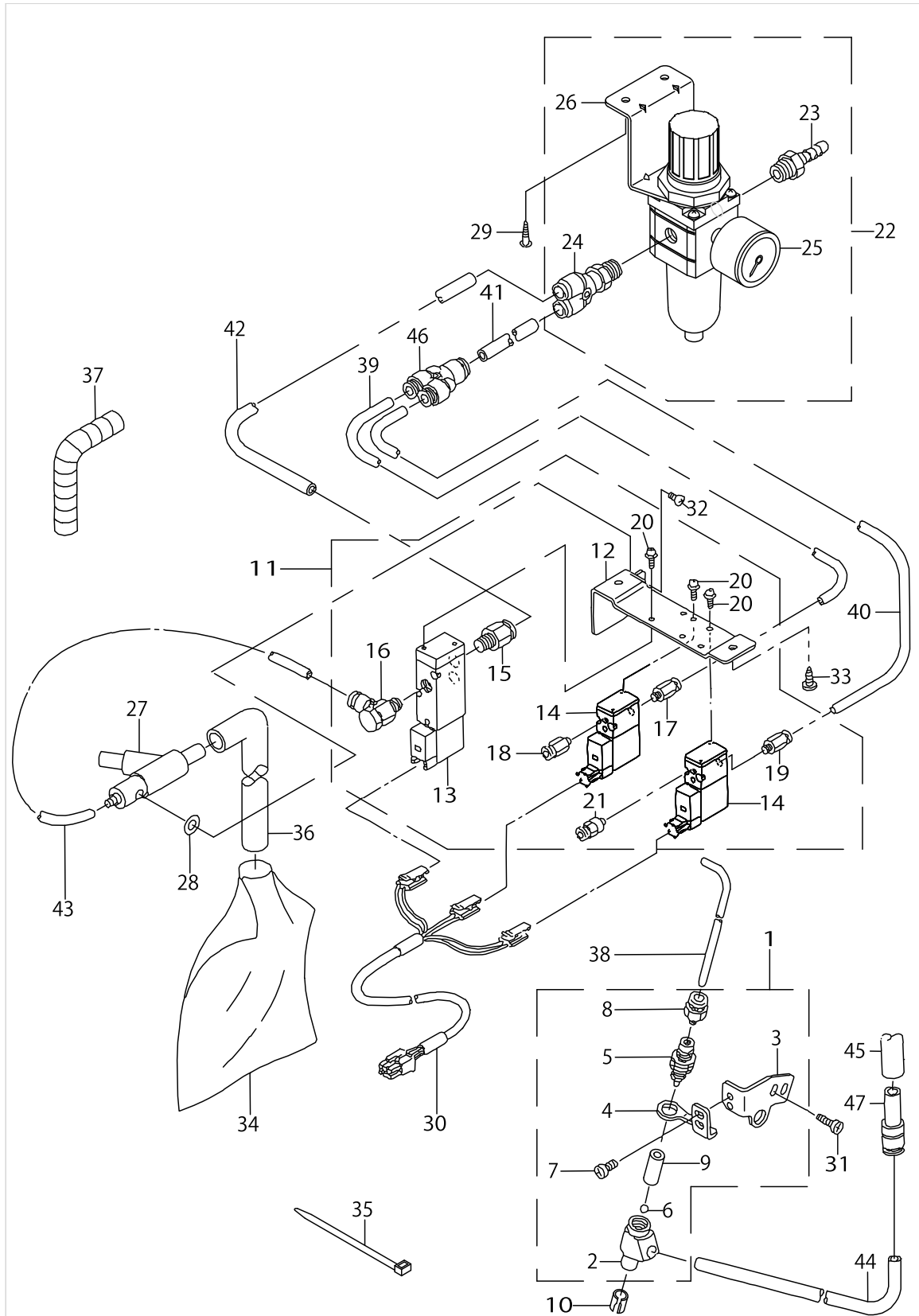
OIL RESERVOIR COMPONENTS



OIL RESERVOIR COMPONENTS

No.	Parts No.	Parts name	Remarks	Level	Cons	Qty
1	11428158	OIL RESERVOIR ASM.				1
2	11428109	OIL RESERVOIR		*		1
3	11024700	GASKET		*		1
4	11047107	RUBBER CUSHION		*		4
5	SS6700710SH	SCREW 5/16-24 L=7		*		1
6	RO098240100	RUBBER RING		*		1
7	22932156	KNEE LIFTER ROTATION ARM ASM.		*		1
8	22932107	CONNECTING ROT, VERTICAL		*		1
9	NM6060001SE	NUT M6		*		2
10	SM8063012TR	SCREW M6 L=30		*		2
11	22932206	SPRING		*		1
12	RE1000000K0	E-RING 10		*		1
13	22932453	BRACKET ASM.		*		1
14	22932404	BRACKET		*		1
15	22934707	SCREW		*		2
16	SM9062563TR	SCREW M6 L=25		*		1
17	22932305	KNEE PRESS ROD		*		1
18	NM6060001SE	NUT M6		*		1
19	22934251	KNEE PAD PLATE ASM.				1
20	22934202	KNEE PAD PLATE		*		1
21	22934301	KNEE PAD PLATE SUPPORT		*		1
22	SM9061203SE	SCREW M6 L=12		*		1
23	22934509	KNEE PAD PLATE COVER		*		1
24	22934608	KNEE PAD UPRIGHT SHAFT		*		1
25	22934400	KNEE PAD PLATE RUBBER		*		1
26	B8228125000	OIL RESERVOIR MAGNET				1
27	11024304	KNEE PRESS LIFTER ROD				1

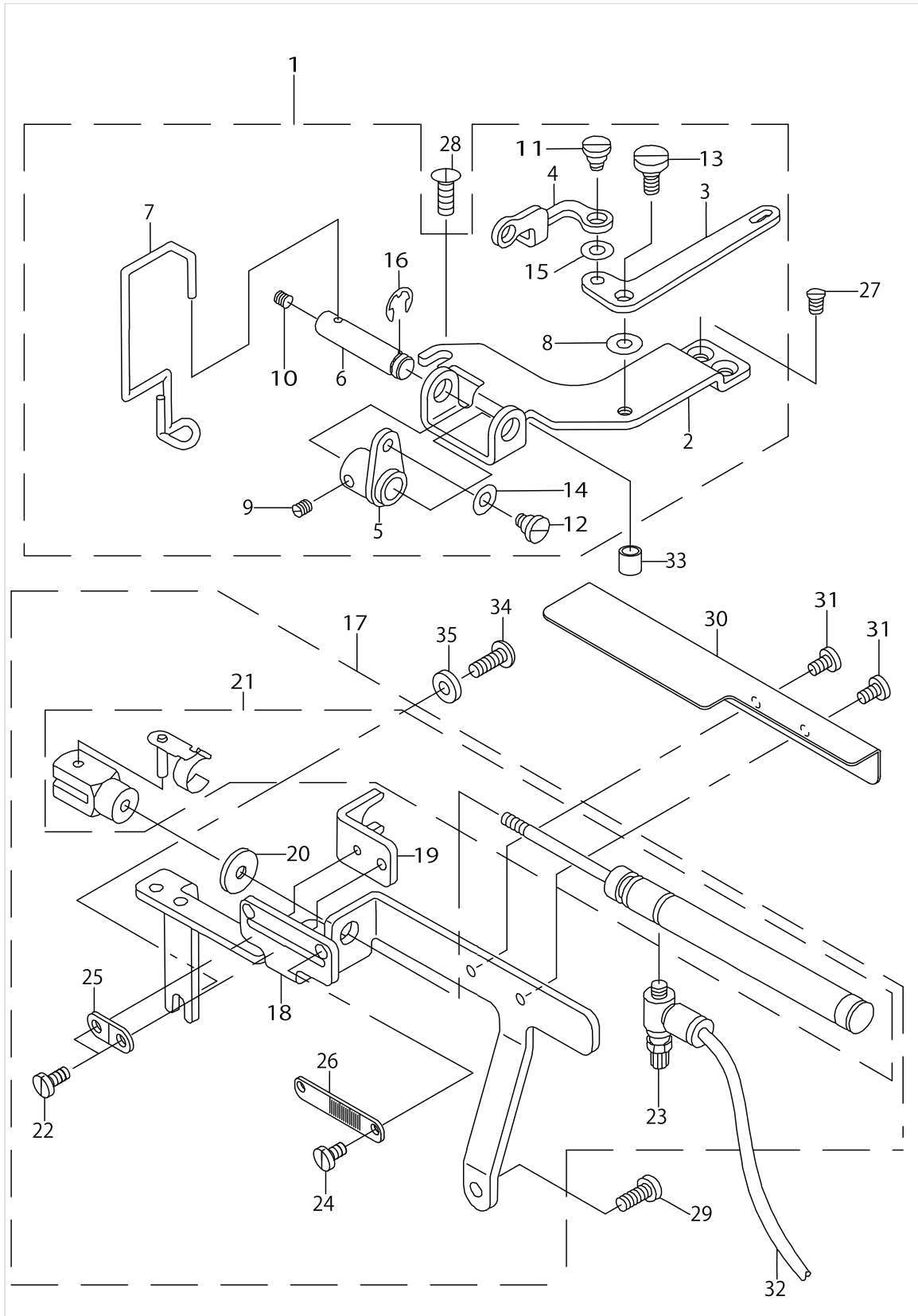
THREAD HOLDER & AIR COMPONENTS



THREAD HOLDER & AIR COMPONENTS

No.	Parts No.	Parts name	Remarks	Level	Cons	Qty
1	11429354	CLAMP HEAD ASM.				1
2	11429305	CLAMP HEAD		*		1
3	11426103	CLAMP BASE, A		*		1
4	11429404	CLAMP BASE, B		*		1
5	11429008	CLAMP CYLINDER		*		1
6	11428505	CLAMP BALL		*		1
7	SS7110710SP	SCREW 11/64-40 L=7		*		2
8	PJ301040501	HALF UNION M5 D=4		*		1
9	11427705	HEAD BUSH		*		1
10	11427309	HEAD COVER				1
11	11426368	SOLENOID VALVE ASM.				1
12	11426301	SOLENOID VALVE ADJUSTING BASE		*		1
13	PV135103000	3-PORT SOLENOID VALVE		*		1
14	PV130524000	3 PORT SOLENOID VALVE		*		2
15	PJ301085102	JOINTING		*		1
16	PJ304085103	SWING ELBOW		*		1
17	PJ301060501	UNION		*		1
18	PJ301040501	HALF UNION M5 D=4		*		1
19	PJ301060501	UNION		*		1
20	SL4030881SF	SCREW M3 L=8		*		6
21	PJ301040501	HALF UNION M5 D=4		*		1
22	11427960	AIR FILTER ASM.				1
23	PJ032526001	HOSE NIPPLE		*		1
24	PJ308085201	Y-UNION		*		1
25	40003560	REGULATOR ASM.		*		1
26	PF902005000	REGULATOR BRACKET		*		1
27	F10120030A0	NOZZLE ASM.				1
28	B1155771000	CUSHION				1
29	SK3412000SC	WOOD SCREW D=4.1 L=20				2
30	11496759	SORENOID VALVE CORD ASM.				1
31	SS7110840SP	SCREW 11/64-40 L=7.8				2
32	SS4110715SP	SCREW 11/64-40 L=7				1
33	SK3412000SC	WOOD SCREW D=4.1 L=20				2
34	11428802	DUST BAG				1
35	HX00292000A	CONNECTING PART				1
36	BT1601001Z0	TUBE				0.3
37	HX00307000C	CABLE CLAMP				0.5
38	BT0400251EB	URETHANE HOSE, BLACK				1.4
39	BT0600401EB	TUBE				0.2
40	BT0600401EB	TUBE				0.2
41	BT0800501EB	VINYL TUBE				0.1
42	BT0800501EB	VINYL TUBE				0.3
43	BT0600401EB	TUBE				0.1
44	BT0800501EB	VINYL TUBE				1.3
45	BT1601001Z0	TUBE				0.1
46	PJ308080001	UNION, Y				1
47	PJ301080001	REDUCER				1

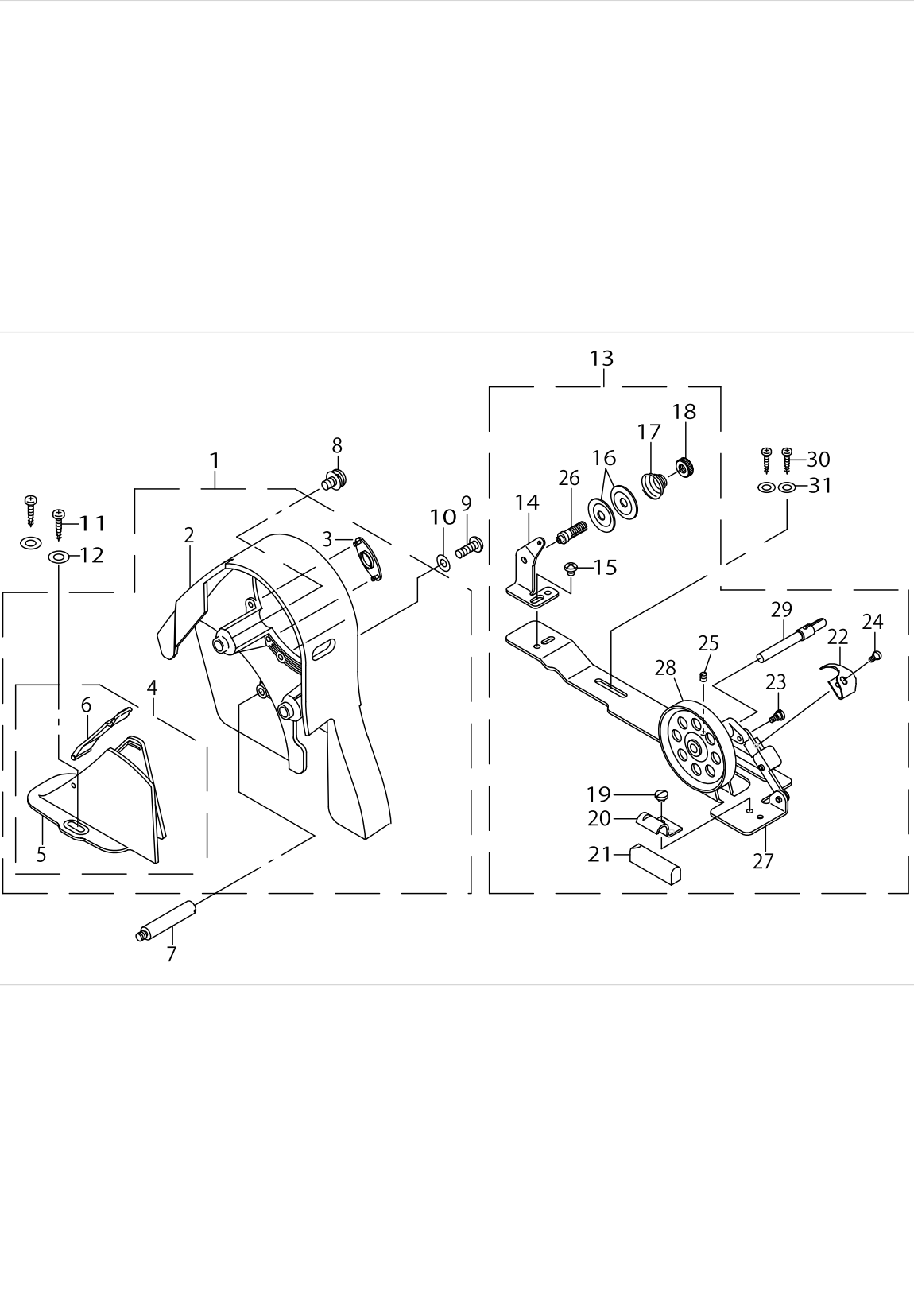
THREAD HAUL COMPONENTS



THREAD HAUL COMPONENTS

No.	Parts No.	Parts name	Remarks	Level	Cons	Qty
1	11426657	THREAD HAUL BASE ASM.				1
2	11426608	THREAD HAUL BASE		*		1
3	11427101	THREAD HAUL CONNECTING LINK, A		*		1
4	11427200	THREAD HAUL CONNECTING LINK, B		*		1
5	11426855	THREAD HAUL LEVER ASM.		*		1
6	11426707	THREAD HAUL SHAFT		*		1
7	11427002	THREAD HAUL WIRE		*		1
8	WP0482086SD	WASHER 4.8X11.5X2		*		1
9	SS8110520SP	SCREW 11/64-40 L=5		*		2
10	SS8110422TP	SCREW 11/64-40 L=4		*		1
11	SD0640321SP	HINGE SCREW D= 6.35 H= 3.2		*		1
12	SD0640321SP	HINGE SCREW D= 6.35 H= 3.2		*		1
13	SD0600291TP	HINGE SCREW D=6 H=2.9		*		1
14	WP0501016SA	WASHER 5X10.5X1		*		1
15	WP0501016SA	WASHER 5X10.5X1		*		1
16	RE0600000K0	E-RING 6		*		1
17	11428455	CYLINDER ASM.				1
18	11428406	HAUL THREAD CYLINDER PLATE		*		1
19	11428307	HAUL THREAD STOPPER		*		1
20	B1620487000	FEED CONNECTING PIN WASHER		*		1
21	PA1003018B0	AIR CYLINDER (Y KNUCKLE)		*		1
22	SM9041050SC	SCREW M4X0.7 L=10		*		2
23	PC010510000	SPEED CONTROLLER		*		1
24	SS6080320SP	SCREW 1/8-44 L= 2.5		*		2
25	11428000	THREAD HAUL ADJUSTING PLATE		*		1
26	11427804	THREAD HAUL SCALE PLATE		*		1
27	SS1110710SP	SCREW 11/64-40 L=7				2
28	SS4121415SP	SCREW 3/16-28 L=14				1
29	SS6121220TP	SCREW 3/16-28 L=11.5				1
30	11427606	THREAD HAUL CYLINDER COVER				1
31	SS6110480SP	SCREW 11/64-40 L=4.3				2
32	BT0400251EB	URETHANE HOSE, BLACK				1.2
33	D2114555B00	BRACKET INSTALLING COLLAR				1
34	SS4121415SP	SCREW 3/16-28 L=14				1
35	WP0502616SD	WASHER				1

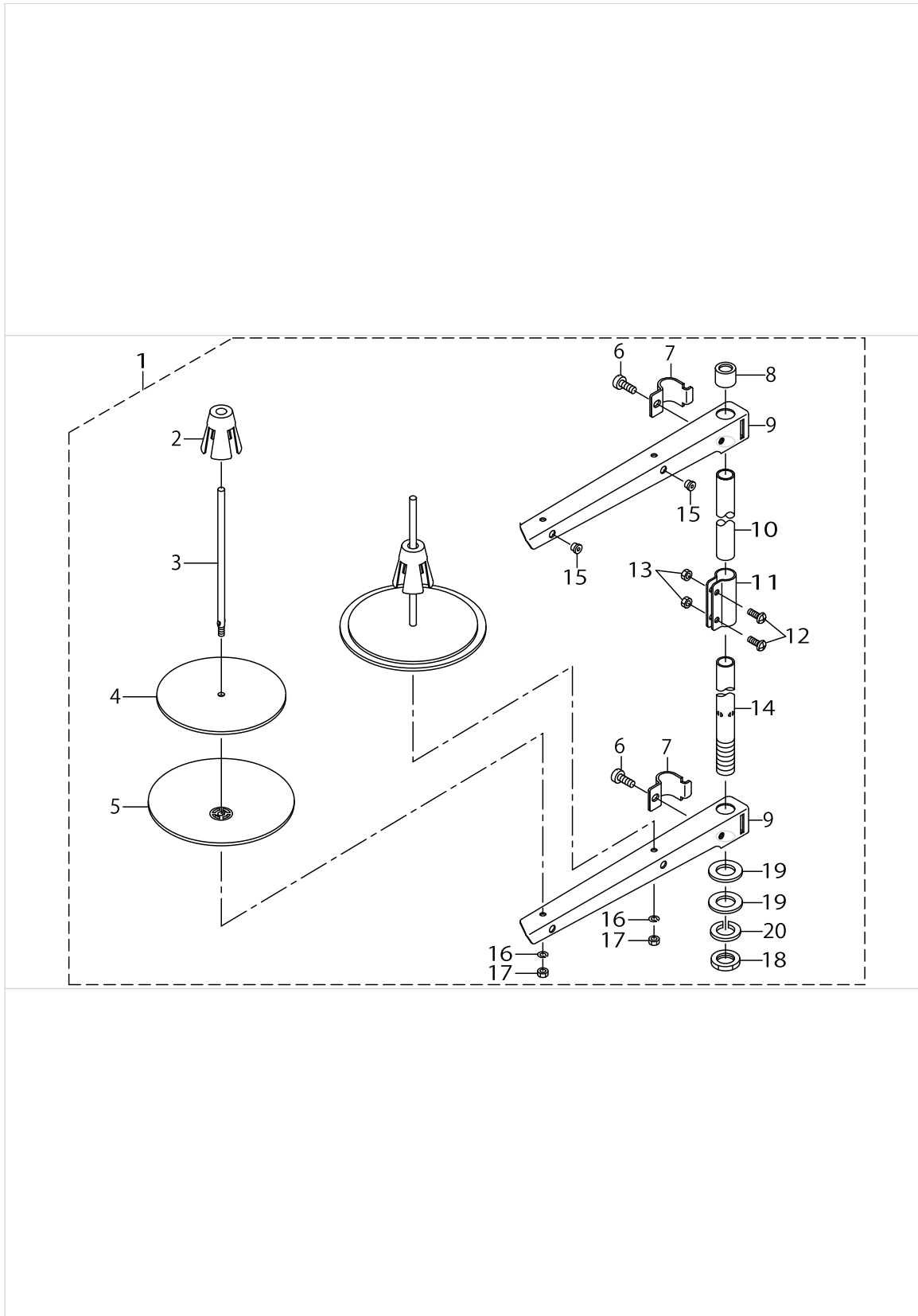
BELT COVER & BOBBIN WINDER COMPONENTS



BELT COVER & BOBBIN WINDER COMPONENTS

No.	Parts No.	Parts name	Remarks	Level	Cons	Qty
1	11076650	BELT COVER ASM. (URBANE GREY)				1
2	11076601	BELT COVER A		*		1
3	11076700	BELT COVER A CAP		*		1
4	11076858	BELT COVER B ASM.		*		1
5	11076809	BELT COVER B		*		1
6	11076957	BELT COVER B CAP ASM.		*		1
7	11023504	BELT COVER SUPPORT, A				1
8	11025202	BELT COVER A SCREW				2
9	SS4121415SP	SCREW 3/16-28 L=14				1
10	WP0501016SD	WASHER 5X10.5X1				1
11	SK3412000SC	WOOD SCREW D=4.1 L=20				2
12	WP0450826SC	WASHER 4.5X10X0.8				2
13	22927354	WOOD SCREW D=4.1 L=20				1
14	22928501	BOBBIN WINDER COMPL.		*		1
15	SS4110515SP	THREAD TENSION BRACKET ASM.		*		1
16	22928907	SCREW 11/64-40 L=7.8		*		2
17	22929004	THREAD TENSION DISK		*		2
18	22928808	THREAD TENSION SPRING		*		1
19	SS7110350SP	THREAD TENSION NUT		*		1
20	22928402	SCREW 11/64-40 L=5		*		1
21	22928303	PRESSER PLATE		*		1
22	22928105	RUBBER BRAKE		*		1
23	SD0490261SP	HINGE SCREW D=4.9 H=2.6		*		1
24	SS7081310SP	SCREW 1/8-44 L=12.5		*		1
25	SS8110510SP	BOBBIN BASE		*		1
26	22928709	BOBBIN PULLEY		*		1
27	22927305	BOBBIN WINDER POST		*		1
28	22927404	SCREW M4X0.7 L=5		*		1
29	22927602	WASHER 4.8X8.4X0.8		*		1
30	SK3412000SC	WOOD SCREW D=4.1 L=20				2
31	WP0450826SC	WASHER 4.5X10X0.8				2

THREAD STAND COMPONENTS



THREAD STAND COMPONENTS

No.	Parts No.	Parts name	Remarks	Level	Cons	Qty
1	22930358	THREAD STAND ASM.				1
2	22931109	SPOOL RETAINER		*		2
3	22931000	SPOOL PIN		*		2
4	22930903	SPOOL REST CUSHION		*		2
5	22930804	SPOOL REST		*		2
6	SM6061610SC	SCREW M6 L=16		*		2
7	22930705	THREAD GUIDE ARM JOINT		*		2
8	22931406	SPOOL REST ROD RUBBER CAP		*		1
9	22930507	SPOOL REST ARM		*		2
10	22930408	SPOOL REST ROD, UPPER		*		1
11	22931307	SPOOL REST ROD JOINT		*		1
12	SM4051405SE	SCREW M5 L=14		*		2
13	NM6050001SE	NUT M5		*		2
14	22930309	SPOOL REST ROD, LOWER		*		1
15	22931208	THREAD GUIDE		*		2
16	WS0510002KN	SPRING WASHER		*		2
17	NM6050001SE	NUT M5		*		2
18	NM6160511SE	NUT M16X1.5		*		1
19	WP1612616SE	WASHER 16X30X2.6		*		2
20	WS1643202KR	SPRING WASHER		*		1

LIST FOR INFORMATION OF CHANGE

As to the place changed, refer to the corresponding Rev.No.
 When previous parts(Obsoleted part)and new parts(Added parts)are
 not interchangeable with each other:
 In this case,even obsoleted parts(D.)can be ordered with the
 obsoleted part number,so select the parts with changed dates and
 place your orders.

変更箇所は、該当Rev.No.版をご参照ください。
 部品の互換性がない変更の場合は、削除された品番でも、ご注文できます。

29123809
 No.0868-07 Rev.No.

*A:Added parts追加部品/D:Obsoleted parts削除部品/E:Erratum訂正

* Rev. No.	Page 頁	Ref. No.	Parts No. 品番	* Rev. No.	Page 頁	Ref. No.	Parts No. 品番
D 06	2	12	CM-3002001-01	A 07	2	12	CM-3013000-01
D 06	2	13	CM-3002001-A1				
D 06	2	14	100-04109	A 07	2	14	229-01805
D 06	2	64	CM-3002000-B1				
D 06	6	8	B1403-155-000	A 07	6	8	229-06200
D 06	8	16	SS-7110720-SP	A 07	8	16	SS-4110515-SP
D 06	8	24	110-18405	A 07	8	24	229-20409
D 06	8	27	SS-7110410-SP	A 07	8	27	SS-4110515-SP
D 06	8	36	229-07000	A 07	8	36	400-17805
D 06	8	40	400-14007	A 07	8	40	400-60989
D 06	14	30	112-28301	A 07	14	30	229-62708
D 06	18	17	HA-0005900-00	A 07	18	17	HA-0060000-00
D 06	20	26	SS-4151215-SP	A 07	20	26	SS-4150915-SP
D 06	22	16	SM-9061853-SR	A 07	22	16	SM-9062563-TR
D 06	22	18	110-23751	A 07	22	19	229-34251
				A 07	22	18	NM-6060001-SE
D 06	22	19	110-24403	A 07	22	25	229-34400
D 06	22	20	110-23702	A 07	22	20	229-34202
D 06	22	21	110-23801	A 07	22	21	229-34301
D 06	22	23	B3431-552-000-A	A 07	22	23	229-34509
D 06	22	24	B3419-122-000	A 07	22	24	229-34608
D 06	24	25	114-27952	A 07	24	25	400-03560
D 06	24	26	114-27903	A 07	24	26	PF-9020050-00
D 06	24	35	SK-3412000-SC				
D 06	24	36	WP-0531000-SC				
D 06	24	37	114-28901				
D 06	24	48	HX-0028900-00	A 07	24	35	HX-0029200-0A
D 06	24	37	HX-0030700-0A	A 07	24	37	HX-0030700-0C
				A 07	26	34	SS-4121415-SP
				A 07	26	35	WP-0502616-SD

HOW TO MAKE USE OF THIS PARTS LIST

1.Explanation of codes

1)"*"mark.....means this part is changed from the previous parts book.

As to the details of the change, refer to the "List for information of change".

2)"#01".....refer to "Note" explanation at bottom of page.

2.Codes on the "Qty" column

- Each numeral indicates the number of parts required.
- "0.1" and "2.5" indicate the length (in meters) of the respective parts.

3.Parentheses mean that the corresponding part is a subpart that constructs an assembly part.

4.Dotted lines on the Figures indicate assembly parts.

1."注記"欄の記号説明

1) "*"印.....前回のパーツブックに比較して今回変更された部品を意味します。

変更内容は、"変更情報リスト"を参照してください。

2) "#01".....ページ下の"注記"の説明を参照してください。

2.数量欄の数字は、個数を表し、0.1、2.5等の数値は、長さ（単位メートル）を表します。

3.数量欄の（ ）は、組部品を構成している子部品であることを意味します。

4.イラストページの-----枠は、組構成であることを意味します。

NUMERICAL INDEX OF PARTS

PART NO	PAGE	REF NO.	PART NO	PAGE	REF NO.	PART NO	PAGE	REF NO.
11000304	2	2	11094109	26	11	11421500	16	20
11002409	6	29	11100500	2	18	11421609	18	58
11002508	6	30	11101300	22	34	11421708	16	39
11002904	6	44	11102308	22	12	11421807	16	28
11003308	2	11	11110301	24	15	11421906	16	37
11004207	8	26	11141355	8	46	11422052	16	42
11005204	6	11	11345600	20	16	11422102	16	38
11006004	10	35	11352804	18	48	11422201	16	11
11008208	12	12	11353505	16	44	11422250	16	10
11008604	12	26	11415205	4	57	11422300	20	18
11008703	12	25	11416203	2	20	11422508	8	44
11009800	12	5	11416955	6	37	11422607	8	43
11010154	12	19	11416963	6	34	11422706	24	30
11010303	12	17	11417102	8	3	11422805	18	63
11010410	12	20	11417201	8	45	11422904	18	65
11010709	14	66	11417615	2	44	11423605	22	16
11010907	14	61	11417714	12	33	11423704	22	17
11014008	12	15	11418308	8	35	11423803	22	18
11015906	8	39	11418803	26	13	11423951	22	19
11017357	6	4	11418852	26	12	11424009	22	20
11018207	10	23	11419108	20	1	11424108	22	21
11023504	34	7	11419207	20	5	11424306	22	22
11024304	28	27	11419306	20	4	11424405	22	23
11024700	28	3	11419405	20	2	11424652	22	13
11025202	34	8	11419504	20	11	11424801	24	24
11037405	12	22	11419603	20	10	11424959	24	27
11038650	8	24	11419702	20	12	11425055	24	20
11038759	8	42	11419801	20	13	11425204	24	7
11038809	8	32	11419900	20	14	11425451	24	32
11039062	6	9	11420007	18	68	11425659	24	31
11039070	6	8	11420106	16	7	11425907	24	2
11039203	6	6	11420155	16	1-2	11426103	30	3
11039351	6	3	11420205	16	3	11426301	30	12
11043205	20	21	11420353	16	4-9	11426368	30	11
11043304	20	22	11420502	16	5-8	11426608	32	2
11043908	20	20	11420601	16	6	11426657	32	1
11045952	10	21	11420700	16	19	11426707	32	6
11047107	28	4	11420759	16	18	11426855	32	5
11070802	2	1	11420809	16	22	11427002	32	7
11076601	34	2	11420908	16	27	11427101	32	3
11076650	34	1	11421005	16	29	11427200	32	4
11076700	34	3	11421104	16	30	11427309	30	10
11076809	34	5	11421203	16	31	11427606	32	30
11076858	34	4	11421302	16	23	11427705	30	9
11076957	34	6	11421401	16	25	11427804	32	26

NUMERICAL INDEX OF PARTS

PART NO	PAGE	REF NO.	PART NO	PAGE	REF NO.	PART NO	PAGE	REF NO.
11427960	30	22	22905103	8	25	22920102	10	29
11428000	32	25	22906200	8	8	22920300	10	26
11428109	28	2	22906309	8	10	22920409	10	24
11428158	28	1	22906457	8	4	22920508	2	30
11428307	32	19	22907307	10	37	22920607	2	47
11428406	32	18	22907406	10	34	22920805	8	7
11428455	32	17	22907505	10	31	22920904	2	43
11428505	30	6	22907554	10	30	22921001	2	31
11428802	30	34	22907604	10	32	22921209	2	38
11429008	30	5	22907703	10	33	22921308	2	33
11429107	24	29	22907802	10	1	22921407	2	34
11429305	30	2	22908008	10	8	22921506	2	37
11429354	30	1	22908156	10	6	22921605	2	39
11429404	30	4	22908305	10	9	22921704	2	35
11434065	10	42	22908354	10	5	22921803	2	36
11434206	10	45	22908552	10	4	22923015	26	14
11434313	10	44	22908701	10	10	22923205	26	17
11496353	20	17	22908800	10	15	22923403	26	19
11496452	22	15	22908909	10	12	22923502	26	21
11496460	22	14	22909006	10	14	22923601	26	20
11496551	22	1	22910004	6	26	22923700	26	15
11496650	24	1	22910053	6	24	22923809	26	18
11496759	30	30	22910103	6	27	22923908	26	22
11497054	16	4·9	22910350	12	43	22924153	26	6
11497104	16	5·8	22910806	12	28	22924302	26	7
11497153	16	1·2	22910905	12	24	22924401	26	3
11497203	4	56·60	22911002	12	40	22924609	26	27
22900401	2	10	22911101	12	13	22924906	26	10
22900609	2	28	22911507	12	2	22925002	26	9
22900757	2	4	22911606	12	4	22925101	26	5
22901003	4	55	22911804	12	7	22927305	34	27
22901201	4	52	22912000	12	9	22927354	34	13
22901250	4	51	22912109	12	8	22927404	34	28
22901300	4	53	22912604	14	65	22927602	34	29
22901409	8	1	22912752	14	52	22928105	34	22
22901805	2	14	22912901	12	39	22928303	34	21
22903009	6	2	22913008	14	51	22928402	34	20
22903108	6	20	22913701	12	38	22928501	34	14
22903157	6	15	22915151	12	45	22928709	34	26
22903207	6	21	22915201	14	48	22928808	34	18
22903306	6	23	22915359	14	58	22928907	34	16
22903900	6	42	22916001	8	31	22929004	34	17
22904155	6	32	22916308	8	27	22930309	36	14
22904155	14	62	22916555	8	38	22930358	36	1
22905004	8	23	22919203	6	14	22930408	36	10

NUMERICAL INDEX OF PARTS

PART NO	PAGE	REF NO.	PART NO	PAGE	REF NO.	PART NO	PAGE	REF NO.
22930507	36	9	22950000	16	14	BT0400251EB	30	38
22930705	36	7	22950356	16	12	BT0400251EB	32	32
22930804	36	5	22950950	20	7	BT0600401EB	30	43
22930903	36	4	22951008	20	19	BT0800501EB	30	44
22931000	36	3	22951552	20	31	BT1601001Z0	30	45
22931109	36	2	22953657	22	36	CM300200001	2	13
22931208	36	15	22954101	22	4	CM301300001	2	12
22931307	36	11	22954200	22	5	CQ252000000	26	8
22931406	36	8	22954309	22	6	CS079073ASH	8	36
22932107	28	8	22954606	22	2	CS079101ASH	8	29
22932156	28	7	22954705	2	9	D1421555B00	10	43
22932206	28	11	22955900	24	13	D2114555B00	32	33
22932305	28	17	22956007	24	14	D2121555D00	24	33
22932404	28	14	22956106	24	6	D2420530D00	16	46
22932453	28	13	22956205	24	10	D2422530D00	18	51
22932909	8	41	22956304	24	11	D2423530D00	16	35
22934202	28	20	22956809	24	26	EA9500B0100	26	30
22934251	28	19	22956908	24	9	F10120030A0	30	27
22934301	28	21	22957104	24	16	HA001900000	22	11
22934400	28	25	22957203	24	28	HA006000000	24	17
22934509	28	23	22958300	2	7	HK034610140	20	15
22934608	28	24	22962708	20	30	HK03464000B	20	6
22934707	28	15	40003560	30	25	HK03464000B	22	38
22937965	6	41	40017805	10	36	HK03464000B	24	23
22940506	12	10	40060989	10	40	HW200390000	24	18
22940654	14	55	B1109012I0B	4	56-60	HW500070000	22	9
22940753	12	35	B1155771000	30	28	HW500070000	24	19
22940803	12	31	B1215552000	6	22	HX000430000	6	7
22940951	12	27	B13050120A0	8	14	HX00292000A	30	35
22941108	12	1	B13061550A0	8	16	HX00307000C	30	37
22941306	12	36	B13061550B0	8	13	M40071100AA	6	38
22944508	10	17	B13061550C0	8	12	M40071100AB	6	39
22944607	10	20	B13071550A0	8	19	M6010350AAA	4	58
22944706	10	11	B13071550B0	8	18	MC200500750	8	28
22945109	10	28	B13081550A0	8	21	MDB100B1100	8	11
22945307	2	40	B1402552000A	8	2	MDP500B1400	8	34
22945356	2	32	B1408552000	6	12	NM6040000SN	20	26
22945414	2	22	B1414555000	8	6	NM6040003SC	22	25
22945463	2	21	B1521555000	10	2	NM6050001SE	36	17
22945505	2	25	B1613012I00	14	60	NM6060001SE	28	18
22945604	2	23	B1620487000	32	20	NM6060003SC	22	24
22945703	2	26	B1808552000	8	40	NM6160511SE	36	18
22945802	2	24	B1903552000	6	13	NS6090310SP	24	5
22947006	26	1	B1905541B00	6	10	NS6110310SP	18	52
22947105	26	25	B8228125000	28	26	NS6110310SP	24	12

NUMERICAL INDEX OF PARTS

PART NO	PAGE	REF NO.	PART NO	PAGE	REF NO.	PART NO	PAGE	REF NO.
NS6110420SP	18	55	SD0380551SL	18	57	SS4110515SP	34	15
NS6110430SP	16	32	SD0490261SP	34	23	SS4110715SP	18	64
NS6150310SP	16	47	SD0500251SP	16	61	SS4110715SP	30	32
NS6150430SP	16	17	SD0500251SP	18	61	SS4110915TP	8	33
NS6620310SP	10	25	SD0500402SP	18	50	SS4120615SP	2	29
NS6620310SP	22	26	SD0600291TP	32	13	SS4120615SP	10	19
NS6660410SH	20	25	SD0600361SP	16	43	SS4120615SP	26	4
NS6660430SP	20	28	SD0630275SP	18	67	SS4120915SP	2	50
NS6680410SP	12	42	SD0640321SP	32	12	SS4120915SP	4	50
PA1003018B0	32	21	SD0640321TP	16	36	SS4120915SP	8	47
PC010510000	32	23	SD0640323TP	22	28	SS4120915SP	22	30
PF902005000	30	26	SD0641452TP	18	66	SS4121215SP	4	59
PJ032526001	30	23	SD0650321TP	24	4	SS4121415SP	32	34
PJ301040501	30	21	SD0701511TP	16	41	SS4121415SP	34	9
PJ301060501	30	19	SD0720331SP	10	13	SS4150915SP	10	47
PJ301080001	30	47	SD0720331SP	16	45	SS4150915SP	22	32
PJ301085102	30	15	SD1000801SH	12	47	SS4150915SP	26	26
PJ304085103	30	16	SE4301041SR	26	16	SS4151215SP	20	29
PJ308080001	30	46	SK3412000SC	30	33	SS4151215SP	22	31
PJ308085201	30	24	SK3412000SC	34	30	SS6060210SP	4	54
PV130524000	30	14	SL4030631SC	24	3	SS6080320SP	32	24
PV135103000	30	13	SL4030641SE	24	22	SS6080410SP	2	3
RC0150001KP	12	67	SL4030851SF	26	23	SS6090510TP	16	13
RC0150001KP	14	67	SL4030881SF	30	20	SS6090540SP	24	25
RC1200001KP	18	56	SL4051001MZ	6	5	SS6090620TP	12	41
RC1850001KP	6	31	SM1030601SA	22	29	SS6090670TP	8	5
RC2651218KP	20	9	SM4031501SC	22	8	SS6090670TP	12	3
RE0250000K0	24	8	SM4040655SP	22	3	SS6090910SP	10	39
RE0300000KP	22	27	SM4041655SP	22	7	SS6110420TP	8	30
RE0400000KP	22	37	SM4051405SE	36	12	SS6110480SP	16	34
RE0500000K0	10	46	SM6061610SC	36	6	SS6110480SP	32	31
RE0500000K0	12	21	SM8061010TP	14	53	SS6110610TP	4	48
RE0500000K0	16	40	SM8061050TP	14	54	SS6110710TP	20	23
RE0500000K0	20	24	SM8063012TR	28	10	SS6111010TP	26	24
RE0500000KP	22	33	SM9041050SC	32	22	SS6111210SP	6	40
RE0600000K0	32	16	SM9061203SE	28	22	SS6121220TP	32	29
RE0900000K0	22	35	SM9062563TR	28	16	SS6121610SP	12	44
RE1000000K0	28	12	SS1110710SP	32	27	SS6121840SP	2	17
RO029180100	6	43	SS2110915SP	2	46	SS6121840SP	24	34
RO037180100	10	3	SS2110920TP	2	45	SS6121860SP	12	11
RO044240100	6	18	SS4080620TP	12	34	SS6621212TP	18	53
RO078190100	14	64	SS4090515SP	16	15	SS6661110SP	6	25
RO092270200	12	16	SS4090615SP	6	28	SS6700710SH	28	5
RO098240100	28	6	SS4110515SP	10	27	SS7080510TP	8	9
RO195240100	26	2	SS4110515SP	12	37	SS7081310SP	34	24

NUMERICAL INDEX OF PARTS

PART NO	PAGE	REF NO.	PART NO	PAGE	REF NO.
SS7091110TP	10	41	WP0501016SD	34	10
SS7110350SP	34	19	WP0502616SD	32	35
SS7110710SP	30	7	WP0621016SH	16	16
SS7110740TP	12	23	WP0651056SH	18	59
SS7110740TP	16	21	WP1612616SE	36	19
SS7110840SP	18	62	WS0451040KP	26	28
SS7110840SP	30	31	WS0510002KN	36	16
SS7111120SP	14	59	WS0651310KP	26	29
SS7111410TP	16	24	WS1643202KR	36	20
SS7120770SH	12	6	WT0530002KS	4	62
SS7121410TP	14	56			
SS7121610SP	12	46			
SS7681650TP	6	19			
SS8080310TP	24	21			
SS8090670SP	2	41			
SS8110410TP	8	37			
SS8110422TP	32	10			
SS8110510SP	34	25			
SS8110520SP	32	9			
SS8110520TP	20	8			
SS8150710TP	2	42			
SS8150710TP	12	29			
SS8151150TP	6	1			
SS8151550SP	6	36			
SS8152030SP	16	33			
SS8660610TP	6	33			
SS8660610TP	14	63			
SS8660612TP	20	3			
SS8660810TP	8	22			
SS8660810TP	10	38			
SS8681650TP	6	16			
SS9112420TP	18	54			
SS9151120CP	18	60			
TA0850604R0	2	5			
TA1250406R0	4	49			
TA1250705R0	2	6			
TA2000502R0	2	16			
TA2101002R0	2	19			
WP0450000SD	20	27			
WP0450801SD	6	35			
WP0450826SC	34	31			
WP0480856SP	14	57			
WP0482086SD	32	8			
WP0501016SA	32	15			
WP0501016SD	4	61			