

MODEL : S159/S160/S161/S162

List No : 0858-01

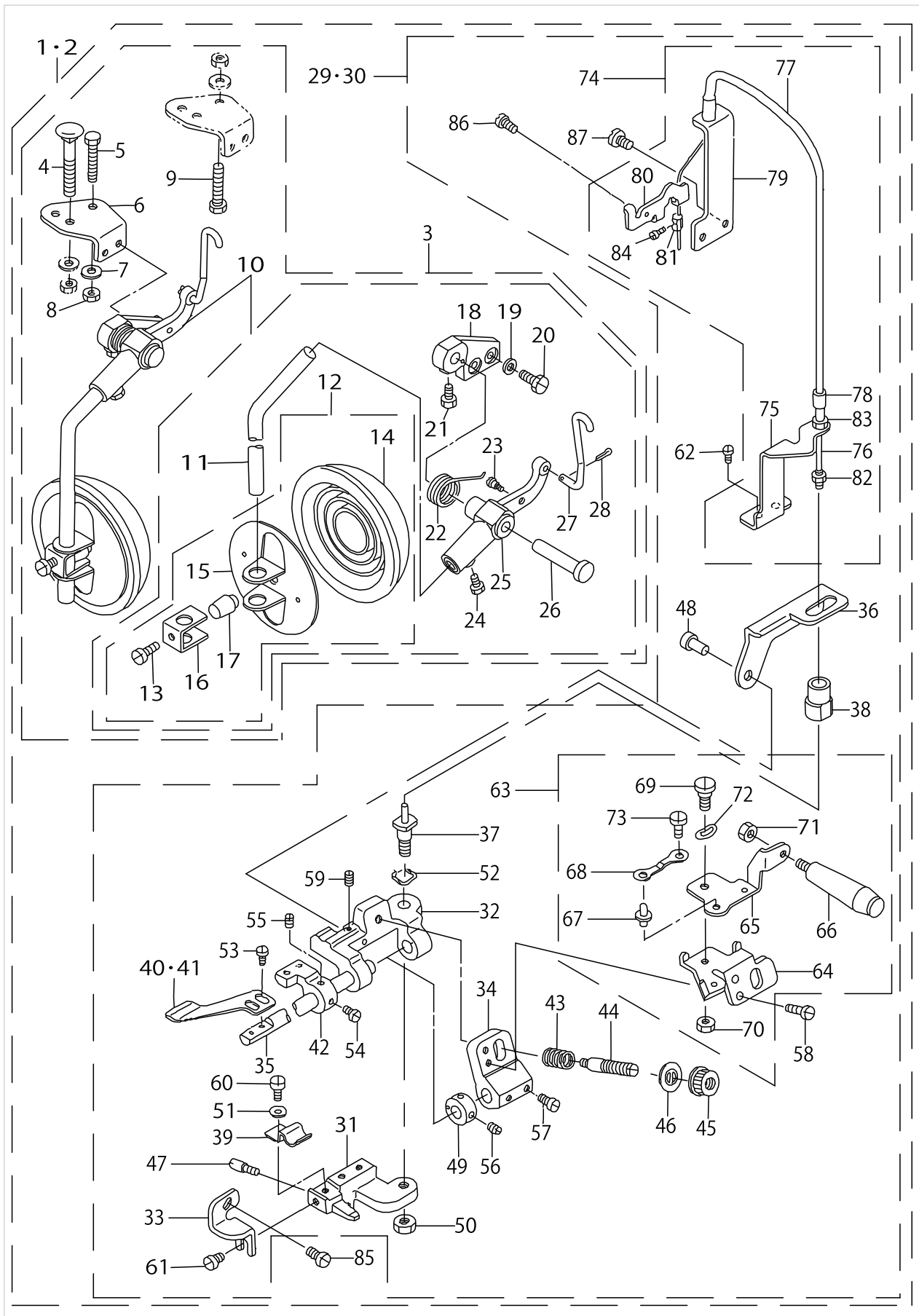
PARTS LIST

Published:09/10/2017

CONTENTS

S158 : SAFETY STITCH MACHINE WITH PEDAL, S160 : OVERLOCK STITCH MACHINE WITH..... PEDAL	1
S161 : SAFETY STITCH MACHINE WITH MANUAL TYPE, S162 : OVERLOCK STITCH MACHINE.. WITH MANUAL TYPE	5
HOW TO MAKE USE OF THIS PARTS LIST	9

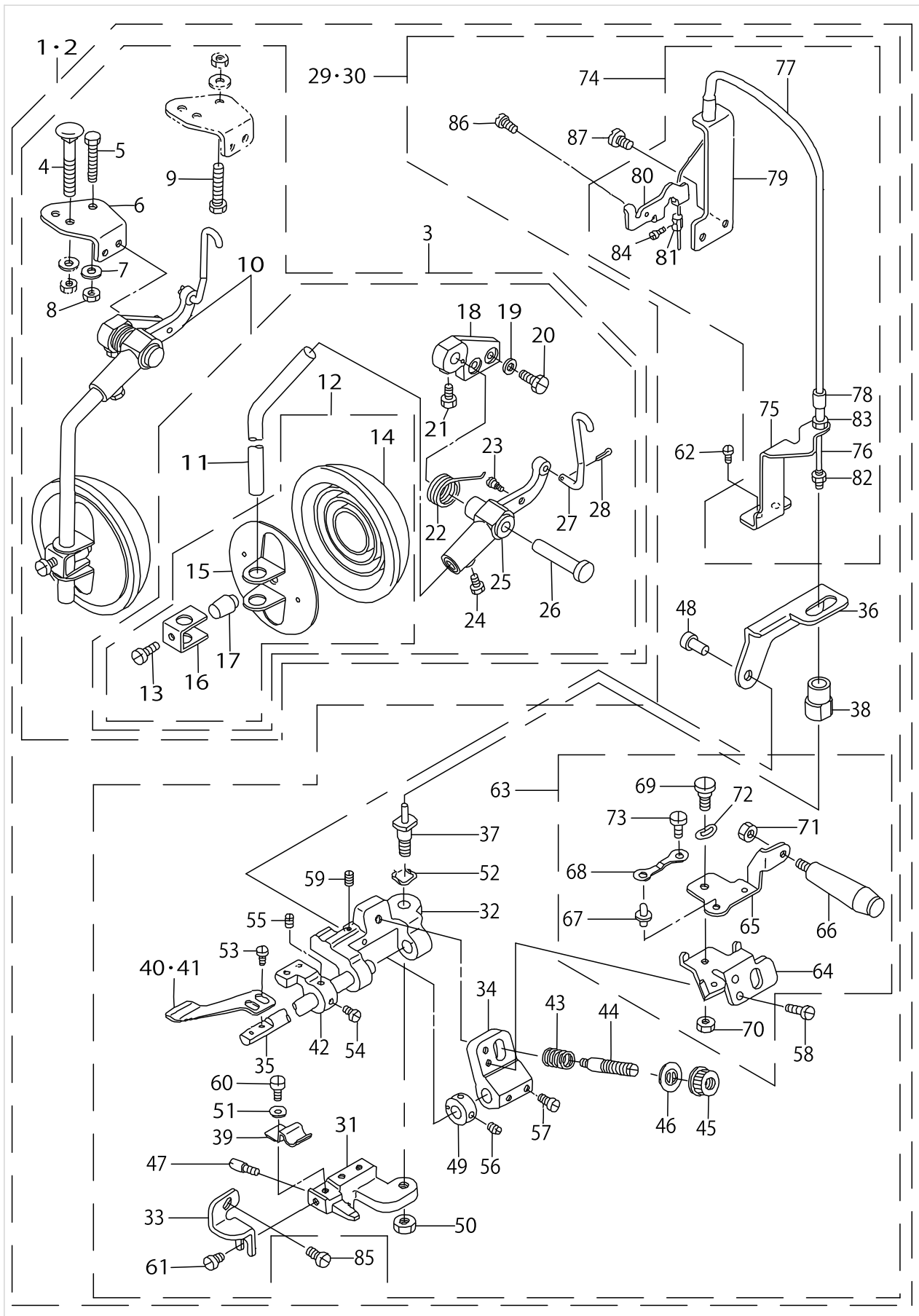
S158 : SAFETY STITCH MACHINE WITH PEDAL, S160 : OVERLOCK STITCH MACHINE WITH PEDAL



S158 : SAFETY STITCH MACHINE WITH PEDAL, S160 : OVERLOCK STITCH MACHINE WITH PEDAL

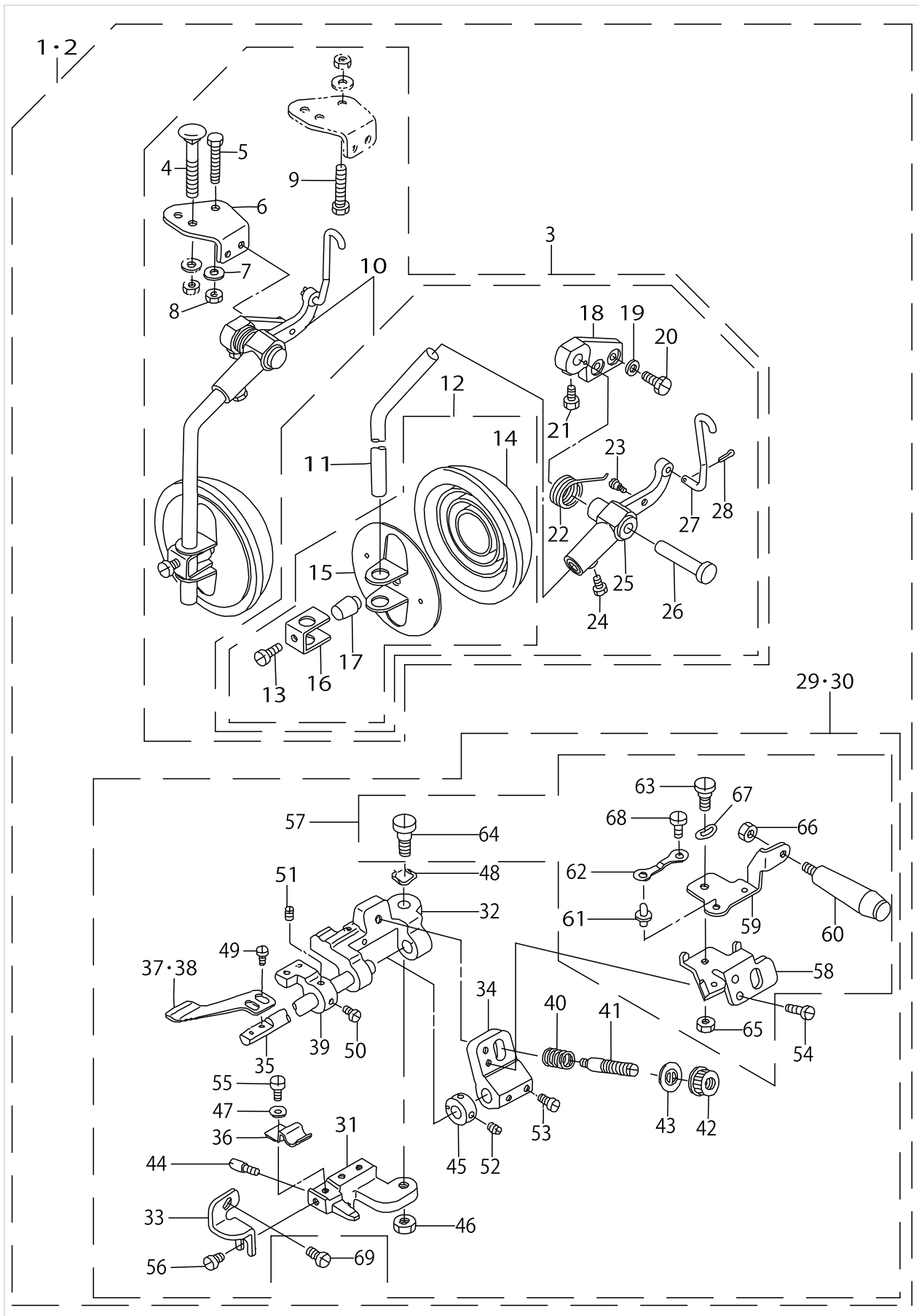
No.	Parts No.	Parts name	Remarks	Level	Cons	Qty
1	MAS159000A0	GATHERING DEVICE ASM.	FOR S159			1
2	MAS160000A0	GATHERING DEVICE ASM.	FOR S160			1
3	MAS107010A0	KNEE OPERATING DEVICE ASM.		*		1
4	MAS10704000	BOLT	FOR SEMI-SUNKEN TYPE TABLE (FOR EXPORT)	*		1
5	SM9083013SC	SCREW M8 L=30	FOR SEMI-SUNKEN TYPE TABLE	*		1
6	MAS10701000	INSTALLING PLATE		*		1
7	WP0850002SC	WASHER 8.5X18X1.6	FOR SEMI-SUNKEN TYPE TABLE	*		1
8	NM6080600SM	NUT M8	FOR SEMI-SUNKEN TYPE TABLE	*		1
9	SM9084533SC	SCREW M8 L=45	FOR FULLY-SUNKEN TYPE TABLE	*		2
10	MAS107010C0	KNEE PRESS PLATE ASM.		*		1
11	MAS10702000	ROD		*		1
12	11023751	KNEE PRESS PLATE ASM.		*		1
13	SM9061203SE	SCREW M6 L=12		*		1
14	22934509	KNEE PAD PLATE COVER		*		1
15	22934202	KNEE PAD PLATE		*		1
16	22934301	KNEE PAD PLATE SUPPORT		*		1
17	22934400	KNEE PAD PLATE RUBBER		*		1
18	MAS10501000	LEVER INSTALLING BASE		*		1
19	WP0740516SP	WASHER 7.4X11.8X0.5		*		2
20	SS9681610TP	SCREW 9/32-28 L=16		*		2
21	SS9151210TP	SCREW 15/64-28 L=11.8		*		1
22	MAS10503000	SPRING		*		1
23	SD0550501SP	HINGE SCREW D=5.5 H=5		*		1
24	SS9151210TP	SCREW 15/64-28 L=11.8		*		1
25	MAS10502000	LEVER		*		1
26	MAS10504000	PIN		*		1
27	MAS10703000	CONNECTING ROD		*		1
28	PD02010000D	SPLIT PIN 1.8X10		*		1
29	MAS159010A0	PEDAL SHIRRING ATTACHMENT ASM.	FOR S159	*		1
30	MAS160010A0	PEDAL SHIRRING ATTACHMENT ASM.	FOR S160	*		1
31	MAS15901000	PRESSER PLATE BASE		*		1
32	MAS15902000	SWING BASE		*		1
33	MAS15903000	BRACKET		*		1
34	MAS15904000	ARM		*		1
35	MAS15905000	SHAFT		*		1
36	MAS15908000	LIFTING LEVER		*		1
37	MAS15909000	LIFTING SHAFT		*		1
38	MAS15910000	LIFTING COLLAR		*		1
39	MAS15911000	SPRING		*		1
40	MAS05108000	INTERMITTENT SHIRRING PRESSER	FOR S159	*		1
41	MAS05208000	INTERMITTENT SHIRRING PLATE	FOR S160	*		1
42	MAS05212000	PIPING MOUNTING BLOCK		*		1
43	MAS05205000	SPRING		*		1
44	B3105804000	TENSION POST		*		1
45	B3116125000	TENSION NUT		*		1
46	B3120125000	ROTATING STOPPER		*		1

S158 : SAFETY STITCH MACHINE WITH PEDAL, S160 : OVERLOCK STITCH MACHINE WITH PEDAL



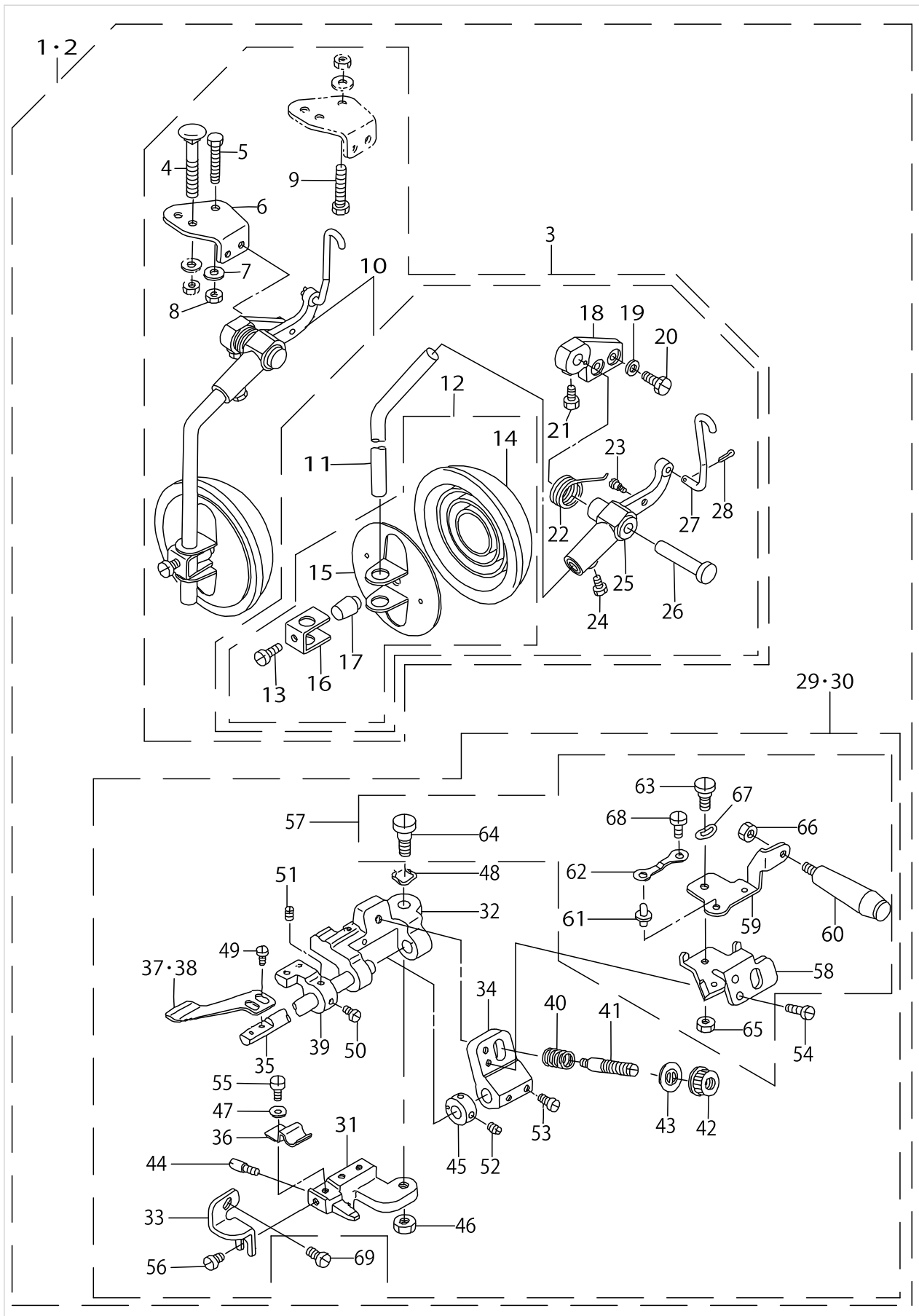
S158 : SAFETY STITCH MACHINE WITH PEDAL, S160 : OVERLOCK STITCH MACHINE WITH PEDAL

No.	Parts No.	Parts name	Remarks	Level	Cons	Qty
47	MAS05202000	SCREW		*		1
48	MAS05714000	PIN		*		1
49	CS0790811SP	THRUST COLLAR D=7.94 W=8		*		1
50	NS6160520SP	NUT 1/4-24		*		1
51	WP0480856SP	WASHER 4.8X8.4X0.8		*		1
52	WZ0850302K0	WAVED WASHER 8.5X12.5X0.3		*		1
53	SS6090650SP	SCREW 9/64-40 L=6		*		2
54	SS6110650TP	SCREW 11/64-40 L=5.5		*		1
55	SS8110520TP	SCREW 11/64-40 L= 4.5		*		1
56	SS8110520TP	SCREW 11/64-40 L= 4.5		*		2
57	SS6110710TP	SCREW 11/64-40 L= 6.5		*		2
58	SS4090715SP	SCREW 9/64-40 L=7		*		2
59	SS8090410SP	SCREW 9/64-40 L= 3.5		*		1
60	SS7110710SP	SCREW 11/64-40 L=7		*		1
61	SS7110720SP	SCREW 11/64-40 L=7		*		1
62	SS7110910SP	SCREW 11/64-40 L=8.5		*		2
63	MAS159060A0	LIFTING ARM ASM.		*		1
64	MAS15906000	LIFTING ARM		*		1
65	MAS15907000	MANUAL LEVER ARM		*		1
66	MAS15915000	MANUAL LEVER		*		1
67	MAL12115000	ARM FIXING PLATE STOPPER		*		1
68	MAL12116000	FIXING PLATE STOPPER SPRING		*		1
69	SD0600352SP	HINGE SCREW		*		1
70	NS6110350SP	NUT 11/64-40		*		1
71	NM6050001SP	NUT M5		*		1
72	WZ0640312K0	WAVED WASHER		*		1
73	SS7110340SP	SCREW 11/64-40 L= 3.2		*		1
74	MAS159120A0	WIRE STOPPER ARM.		*		1
75	MAS15912000	WIRE STOPPER		*		1
76	MAS159130A0	WIRE ASM		*		1
77	MAS15914000	WIRE TUBE		*		1
78	MAS12512000	WIRE ADJUSTING STUD		*		1
79	MAS057180A0	WIRE SUPPORT ASM.		*		1
80	MAS05719000	LIFTING LEVER CONNECTOR		*		1
81	MAS05720000	WIRE STOPPER		*		1
82	NS6090310SP	NUT 9/64-40		*		1
83	NS6110310SP	NUT 11/64-40		*		1
84	SS9090640SP	SCREW 9/64-40 L=6		*		1
85	SS7110840SP	SCREW 11/64-40 L=7.8		*		1
86	SS7110710SP	SCREW 11/64-40 L=7		*		1
87	SS6151040SP	SCREW 15/64-28 L=10		*		2



S161 : SAFETY STITCH MACHINE WITH MANUAL TYPE, S162 : OVERLOCK STITCH MACHINE WITH MANUAL TYPE

No.	Parts No.	Parts name	Remarks	Level	Cons	Qty
1	MAS161000A0	GATHERING DEVICE ASM.	FOR S161			1
2	MAS162000A0	GATHERING DEVICE ASM.	FOR S162			1
3	MAS107010A0	KNEE OPERATING DEVICE ASM.		*		1
4	MAS10704000	BOLT	FOR SEMI-SUNKEN TYPE TABLE (FOR EXPORT)	*		1
5	SM9083013SC	SCREW M8 L=30	FOR SEMI-SUNKEN TYPE TABLE	*		1
6	MAS10701000	INSTALLING PLATE		*		1
7	WP0850002SC	WASHER 8.5X18X1.6	FOR SEMI-SUNKEN TYPE TABLE	*		1
8	NM6080600SM	NUT M8	FOR SEMI-SUNKEN TYPE TABLE	*		1
9	SM9084533SC	SCREW M8 L=45	FOR FULLY-SUNKEN TYPE TABLE	*		2
10	MAS107010C0	KNEE PRESS PLATE ASM.		*		1
11	MAS10702000	ROD		*		1
12	11023751	KNEE PRESS PLATE ASM.		*		1
13	SM9061203SE	SCREW M6 L=12		*		1
14	22934400	KNEE PAD PLATE RUBBER		*		1
15	22934202	KNEE PAD PLATE		*		1
16	22934301	KNEE PAD PLATE SUPPORT		*		1
17	22934400	KNEE PAD PLATE RUBBER		*		1
18	MAS10501000	LEVER INSTALLING BASE		*		1
19	WP0740516SP	WASHER 7.4X11.8X0.5		*		2
20	SS9681610TP	SCREW 9/32-28 L=16		*		2
21	SS9151210TP	SCREW 15/64-28 L=11.8		*		1
22	MAS10503000	SPRING		*		1
23	SD0550501SP	HINGE SCREW D=5.5 H=5		*		1
24	SS9151210TP	SCREW 15/64-28 L=11.8		*		1
25	MAS10502000	LEVER		*		1
26	MAS10504000	PIN		*		1
27	MAS10703000	CONNECTING ROD		*		1
28	PD02010000D	SPLIT PIN 1.8X10		*		1
29	MAS161010A0	PEDAL SHIRRING ATTACHMENT ASM.	FOR S161	*		1
30	MAS162010A0	PEDAL SHIRRING ATTACHMENT ASM.	FOR S162	*		1
31	MAS15901000	PRESSER PLATE BASE		*		1
32	MAS15902000	SWING BASE		*		1
33	MAS15903000	BRACKET		*		1
34	MAS15904000	ARM		*		1
35	MAS15905000	SHAFT		*		1
36	MAS15911000	SPRING		*		1
37	MAS05108000	INTERMITTENT SHIRRING PRESSER	FOR S161	*		1
38	MAS05208000	INTERMITTENT SHIRRING PLATE	FOR S162	*		1
39	MAS05212000	PIPING MOUNTING BLOCK		*		1
40	MAS05205000	SPRING		*		1
41	B3105804000	TENSION POST		*		1
42	B3116125000	TENSION NUT		*		1
43	B3120125000	ROTATING STOPPER		*		1
44	MAS05202000	SCREW		*		1
45	CS0790811SP	THRUST COLLAR D=7.94 W=8		*		1
46	NS6160520SP	NUT 1/4-24		*		1



S161 : SAFETY STITCH MACHINE WITH MANUAL TYPE, S162 : OVERLOCK STITCH MACHINE WITH MANUAL TYPE

No.	Parts No.	Parts name	Remarks	Level	Cons	Qty
47	WP0480856SP	WASHER 4.8X8.4X0.8		*		1
48	WZ0850302K0	WAVED WASHER 8.5X12.5X0.3		*		1
49	SS6090650SP	SCREW 9/64-40 L=6		*		2
50	SS6110650TP	SCREW 11/64-40 L=5.5		*		1
51	SS8110520TP	SCREW 11/64-40 L= 4.5		*		1
52	SS8110520TP	SCREW 11/64-40 L= 4.5		*		2
53	SS6110710TP	SCREW 11/64-40 L= 6.5		*		2
54	SS4090715SP	SCREW 9/64-40 L=7		*		2
55	SS7110710SP	SCREW 11/64-40 L=7		*		1
56	SS7110720SP	SCREW 11/64-40 L=7		*		1
57	MAS159060A0	LIFTING ARM ASM.		*		1
58	MAS15906000	LIFTING ARM		*		1
59	MAS15907000	MANUAL LEVER ARM		*		1
60	MAS15915000	MANUAL LEVER		*		1
61	MAL12115000	ARM FIXING PLATE STOPPER		*		1
62	MAL12116000	FIXING PLATE STOPPER SPRING		*		1
63	SD0600352SP	HINGE SCREW		*		1
64	SD0790801SP	HINGE SCREW D=7.94 H=8		*		1
65	NS6110350SP	NUT 11/64-40		*		1
66	NM6050001SP	NUT M5		*		1
67	WZ0640312K0	WAVED WASHER		*		1
68	SS7110340SP	SCREW 11/64-40 L= 3.2		*		1
69	SS7110840SP	SCREW 11/64-40 L=7.8		*		1

HOW TO MAKE USE OF THIS PARTS LIST

1.As to "#01" and "#02" refer to the "Note" given at the bottom of the respective pages.

2.Codes on the "Qty" column

- Each numeral indicates the number of parts required.
- "0.1" and "2.5" indicate the length (in meters) of the respective parts.

3.Parentheses mean that the corresponding part is a subpart that constructs an assembly part.

4.Dotted lines on the Figures indicate assembly parts.

1. リストページの# 0 1、# 0 2の印は、ページ下の"注記"の説明を参照下さい。
2. 数量欄の数字は、個数を表し、0. 1、2. 5等の数値は、長さ（単位メートル）を表します。
3. 数量欄の（ ）は、組部品を構成している子部品であることを意味します。
4. イラストページの-----枠は、組構成であることを意味します。

NUMERICAL INDEX OF PARTS

PART NO	PAGE	REF NO.	PART NO	PAGE	REF NO.	PART NO	PAGE	REF NO.
11023751	2	12	MAS107010A0	2	3	MAS162010A0	6	29·30
11023751	6	12	MAS107010A0	6	3	NM6050001SP	4	71
22934202	2	15	MAS107010C0	2	10	NM6050001SP	8	66
22934202	6	15	MAS107010C0	6	10	NM6080600SM	2	8
22934301	2	16	MAS10702000	2	11	NM6080600SM	6	8
22934301	6	16	MAS10702000	6	11	NS6090310SP	4	82
22934400	2	17	MAS10703000	2	27	NS6110310SP	4	83
22934400	6	17	MAS10703000	6	27	NS6110350SP	4	70
22934509	2	14	MAS10704000	2	4	NS6110350SP	8	65
B3105804000	2	44	MAS10704000	6	4	NS6160520SP	4	50
B3105804000	6	41	MAS12512000	4	78	NS6160520SP	6	46
B3116125000	2	45	MAS159000A0	2	1·2	PD02010000D	2	28
B3116125000	6	42	MAS15901000	2	31	PD02010000D	6	28
B3120125000	2	46	MAS15901000	6	31	SD0550501SP	2	23
B3120125000	6	43	MAS159010A0	2	29·30	SD0550501SP	6	23
CS0790811SP	4	49	MAS15902000	2	32	SD0600352SP	4	69
CS0790811SP	6	45	MAS15902000	6	32	SD0600352SP	8	63
MAL12115000	4	67	MAS15903000	2	33	SD0790801SP	8	64
MAL12115000	8	61	MAS15903000	6	33	SM9061203SE	2	13
MAL12116000	4	68	MAS15904000	2	34	SM9061203SE	6	13
MAL12116000	8	62	MAS15904000	6	34	SM9083013SC	2	5
MAS05108000	2	40·41	MAS15905000	2	35	SM9083013SC	6	5
MAS05108000	6	37·38	MAS15905000	6	35	SM9084533SC	2	9
MAS05202000	4	47	MAS15906000	4	64	SM9084533SC	6	9
MAS05202000	6	44	MAS15906000	8	58	SS4090715SP	4	58
MAS05205000	2	43	MAS159060A0	4	63	SS4090715SP	8	54
MAS05205000	6	40	MAS159060A0	8	57	SS6090650SP	4	53
MAS05208000	2	40·41	MAS15907000	4	65	SS6090650SP	8	49
MAS05208000	6	37·38	MAS15907000	8	59	SS6110650TP	4	54
MAS05212000	2	42	MAS15908000	2	36	SS6110650TP	8	50
MAS05212000	6	39	MAS15909000	2	37	SS6110710TP	4	57
MAS05714000	4	48	MAS15910000	2	38	SS6110710TP	8	53
MAS057180A0	4	79	MAS15911000	2	39	SS6151040SP	4	87
MAS05719000	4	80	MAS15911000	6	36	SS7110340SP	4	73
MAS05720000	4	81	MAS15912000	4	75	SS7110340SP	8	68
MAS10501000	2	18	MAS159120A0	4	74	SS7110710SP	4	86
MAS10501000	6	18	MAS159130A0	4	76	SS7110710SP	8	55
MAS10502000	2	25	MAS15914000	4	77	SS7110720SP	4	61
MAS10502000	6	25	MAS15915000	4	66	SS7110720SP	8	56
MAS10503000	2	22	MAS15915000	8	60	SS7110840SP	4	85
MAS10503000	6	22	MAS160000A0	2	1·2	SS7110840SP	8	69
MAS10504000	2	26	MAS160010A0	2	29·30	SS7110910SP	4	62
MAS10504000	6	26	MAS161000A0	6	1·2	SS8090410SP	4	59
MAS10701000	2	6	MAS161010A0	6	29·30	SS8110520TP	4	56
MAS10701000	6	6	MAS162000A0	6	1·2	SS8110520TP	8	52

NUMERICAL INDEX OF PARTS

PART NO	PAGE	REF NO.
SS9090640SP	4	84
SS9151210TP	2	24
SS9151210TP	6	24
SS9681610TP	2	20
SS9681610TP	6	20
WP0480856SP	4	51
WP0480856SP	8	47
WP0740516SP	2	19
WP0740516SP	6	19
WP0850002SC	2	7
WP0850002SC	6	7
WZ0640312K0	4	72
WZ0640312K0	8	67
WZ0850302K0	4	52
WZ0850302K0	8	48