

MODEL : L121/L124

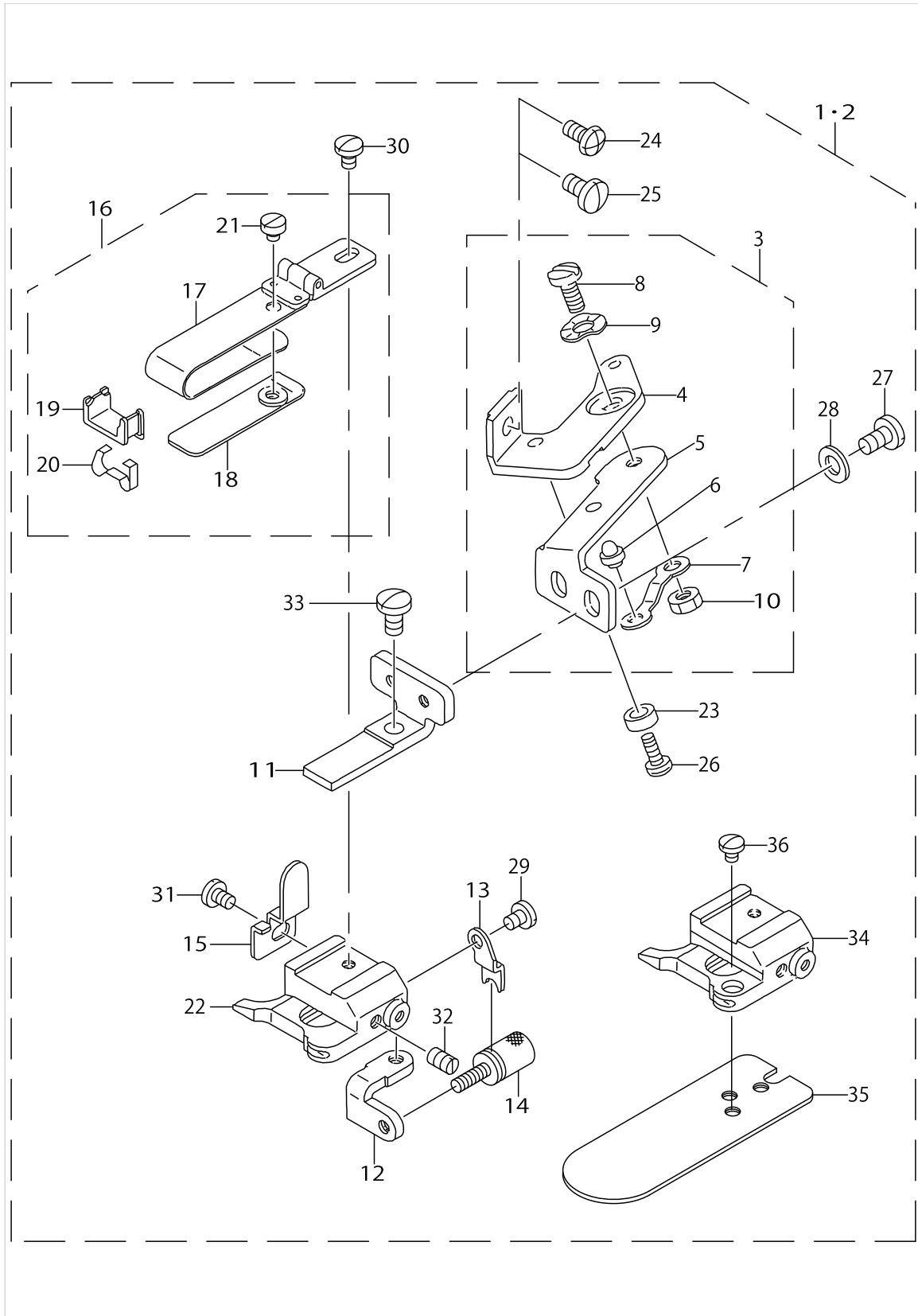
List No : 0855-02

PARTS LIST

Published:09/10/2017

CONTENTS

L121·L124.....	1
HOW TO MAKE USE OF THIS PARTS LIST	3



L121·L124

No.	Parts No.	Parts name	Remarks	Level	Cons	Qty
1	MAL121000A0	SKIRT DRAGGING COMPL.	FOR L121			1
2	MAL124000A0	SKIRT DRAGGING COMPL.	FOR L124			1
3	MAL121010A0	FITTING BASIS ASM.		*		1
4	MAL12101000	FITTING BASIS		*		1
5	MAL12102000	ARM FIXING PLATE		*		1
6	MAL12115000	ARM FIXING PLATE STOPPER		*		1
7	MAL12116000	FIXING PLATE STOPPER SPRING		*		1
8	SD0600271SP	HINGE SCREW D= 6 H= 2.7		*		1
9	WZ0641510KP	WAVED WASHER 6.4X11X0.3		*		1
10	NS6110420SP	NUT 11/64-40		*		1
11	MAL12103000	SLID ARM		*		1
12	MAL12105000	SLIDE STOPPER PLATE		*		1
13	MAL12107000	ADJUSTING SPRING SUPPORT PLATE		*		1
14	MAL12108000	ADJUSTING SPRING		*		1
15	MAL12109000	HEMMING PLATE STOPPER		*		1
16	MAL121110B0	HEMMING PLATE COMPL.		*		1
17	MAL121110A0	HEMMING PLATE COMPL.		*		1
18	MAL121130A0	ADJUSTING PLATE COMPL.		*		1
19	MAL01326000	CLOTH GUIDE		*		1
20	MAL01327000	CLOTH GUIDE SPRING		*		1
21	SS6080320SP	SCREW 1/8-44 L= 2.5		*		1
22	MAL121140A0	SKIRT DRAGGING BASE ASM.	FOR L121	*		1
23	B2739761000	WASHER		*		1
24	SM5040855SN	SCREW	FOR MO-3300/L121	*		1
25	SS7110840SP	SCREW 11/64-40 L=7.8	FOR MO(R)-3900,3700,3600/L1-21 FOR MOC-3900/L124	*		1
26	SS4110615SP	SCREW 11/64-40 L=6		*		1
27	SS7110840SP	SCREW 11/64-40 L=7.8		*		2
28	WP0501016SD	WASHER 5X10.5X1		*		2
29	SS7090510SP	SCREW 9/64-40 L= 4.6		*		1
30	SS7090540TP	SCREW 9/64-40 L=5		*		1
31	SS7090540TP	SCREW 9/64-40 L=5		*		1
32	SS8110710SP	SCREW 11/64-40 L=6.5		*		1
33	SS7110840SP	SCREW 11/64-40 L=7.8		*		1
34	MAL124010A0	SKIRT DRAGGING BASE ASM.	FOR L124	*		1
35	MAL12402000	CLOTH GUIDE	FOR L124	*		1
36	SS7080410SP	SCREW 1/8-44 L= 3.8	FOR L124	*		1

HOW TO MAKE USE OF THIS PARTS LIST

1.As to "#01" and "#02" refer to the "Note" given at the bottom of the respective pages.

2.Codes on the "Qty" column

- Each numeral indicates the number of parts required.
- "0.1" and "2.5" indicate the length (in meters) of the respective parts.

3.Parentheses mean that the corresponding part is a subpart that constructs an assembly part.

4.Dotted lines on the Figures indicate assembly parts.

1. リストページの# 0 1、# 0 2の印は、ページ下の"注記"の説明を参照下さい。
2. 数量欄の数字は、個数を表し、0. 1、2. 5等の数値は、長さ（単位メートル）を表します。
3. 数量欄の（ ）は、組部品を構成している子部品であることを意味します。
4. イラストページの-----枠は、組構成であることを意味します。

NUMERICAL INDEX OF PARTS

PART NO	PAGE	REF NO.
B2739761000	2	23
MAL01326000	2	19
MAL01327000	2	20
MAL121000A0	2	1·2
MAL12101000	2	4
MAL121010A0	2	3
MAL12102000	2	5
MAL12103000	2	11
MAL12105000	2	12
MAL12107000	2	13
MAL12108000	2	14
MAL12109000	2	15
MAL121110A0	2	17
MAL121110B0	2	16
MAL121130A0	2	18
MAL121140A0	2	22
MAL12115000	2	6
MAL12116000	2	7
MAL124000A0	2	1·2
MAL124010A0	2	34
MAL12402000	2	35
NS6110420SP	2	10
SD0600271SP	2	8
SM5040855SN	2	24
SS4110615SP	2	26
SS6080320SP	2	21
SS7080410SP	2	36
SS7090510SP	2	29
SS7090540TP	2	31
SS7110840SP	2	33
SS8110710SP	2	32
WP0501016SD	2	28
WZ0641510KP	2	9